

**ENTRANCE.**

1.	SECURITY PORTAL	20m <sup>2</sup>
2.	ARRIVAL AREA	14m <sup>2</sup>
3.	VISITATION	10m <sup>2</sup>
4.	CONVERSATION ROOM	10m <sup>2</sup>

**EMPLOYEE ONLY.**

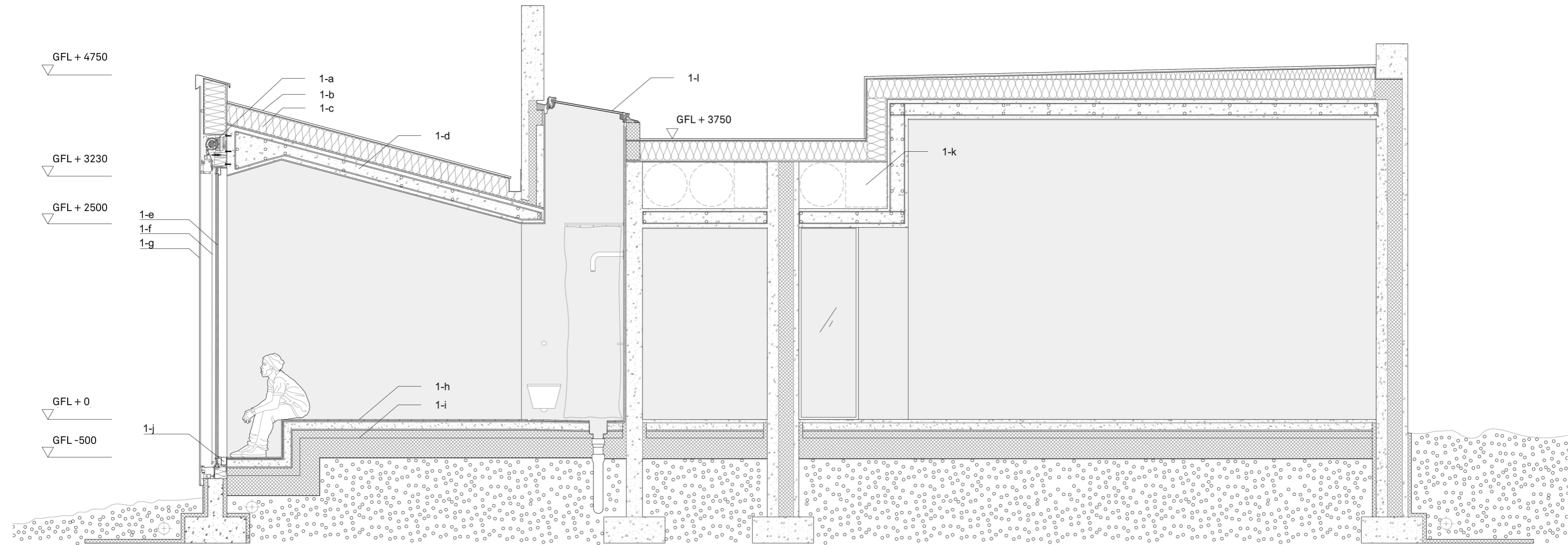
5.	SECURITY ROOM 1	30m <sup>2</sup>
6.	SECURITY ROOM 2 + TOILET	40m <sup>2</sup>
7.	STORAGE/TECHNICAL	4,5m <sup>2</sup>
8.	WARDROBE	20m <sup>2</sup>
9.	COPY/PRINT	4m <sup>2</sup>
10.	WC	8m <sup>2</sup>
11.	SINGULAR OFFICE	10m <sup>2</sup>
12.	SINGULAR OFFICE	10m <sup>2</sup>
13.	SINGULAR OFFICE	10m <sup>2</sup>
14.	MEETING/LUNCH	40m <sup>2</sup>

**EMPLOYEE + INMATE.**

15.	HCWC	6m <sup>2</sup>
16.	KITCHEN	20m <sup>2</sup>
17.	STORAGE	4m <sup>2</sup>
18.	OUTDOOR AREA 1	50m <sup>2</sup>
19.	MULTI-FUNCTIONAL SPACE 1	85m <sup>2</sup>
20.	MULTI-FUNCTIONAL SPACE 2	70m <sup>2</sup>
21.	SITTING AREA/BUFFER ZONE 1	18m <sup>2</sup>
22.	CLEANING/STORAGE	5m <sup>2</sup>
23.	TOILET	2,5m <sup>2</sup>
24.	SHOWER	2,5m <sup>2</sup>
25.	SITTING AREA/BUFFER ZONE 2	30m <sup>2</sup>
26.	CONVERSATION ROOM	9m <sup>2</sup>
27.	HCWC	6m <sup>2</sup>
28.	THERAPY ROOM	10m <sup>2</sup>
29.	SMALL M.F.SPACE/STORAGE	10m <sup>2</sup>
30.	MULTI-FUNCTIONAL SPACE 3	58m <sup>2</sup>
31.	COURTYARD/SENSING SPACE	420m <sup>2</sup>

**INMATE.**

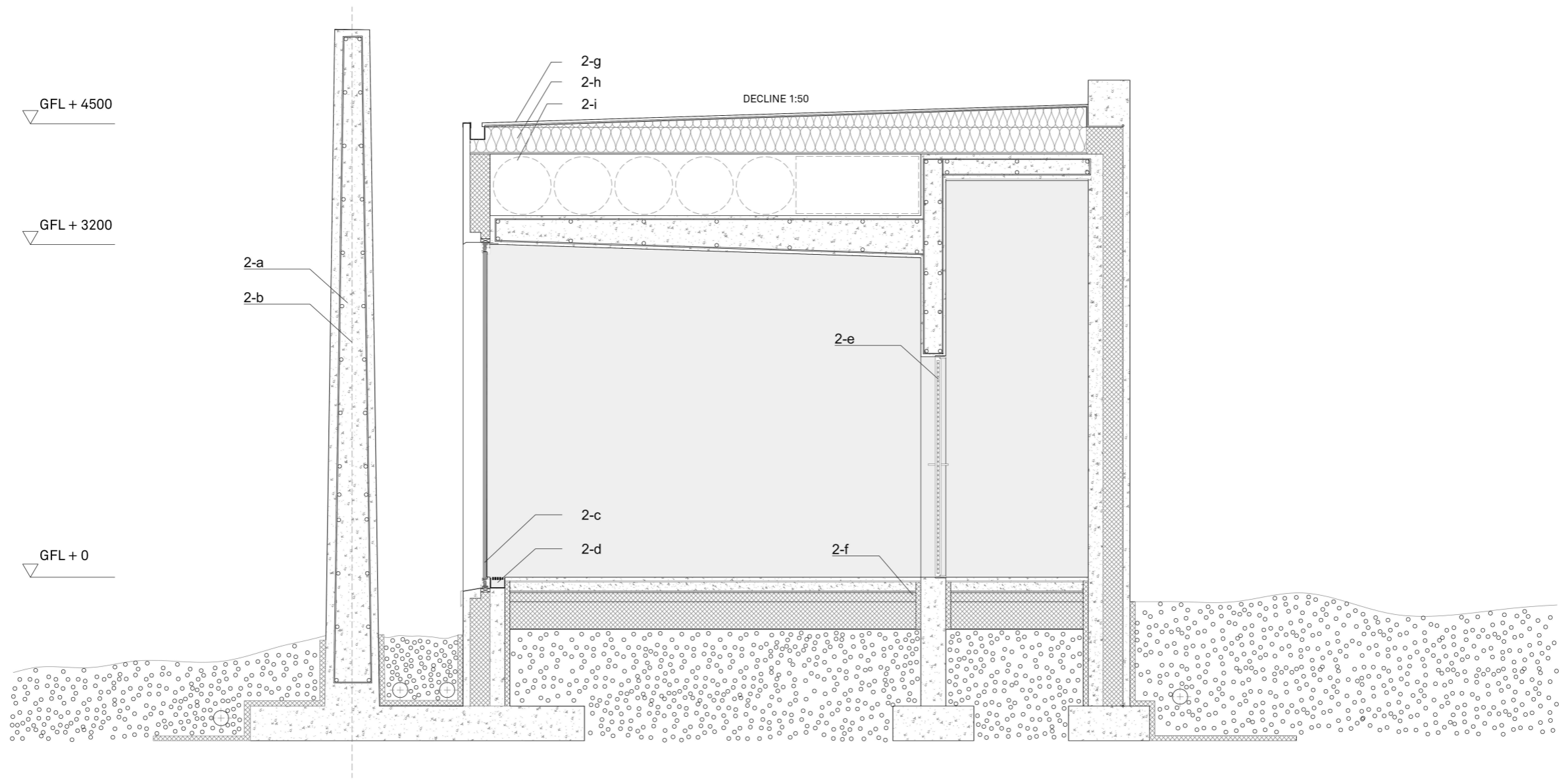
32.	CELL + TOILET 1	15m <sup>2</sup>
33.	CELL + TOILET 2	15m <sup>2</sup>
34.	CELL + TOILET 3	15m <sup>2</sup>
35.	CELL + TOILET 4	15m <sup>2</sup>
36.	CELL + TOILET 5	15m <sup>2</sup>
37.	CELL + TOILET 6	15m <sup>2</sup>
38.	UU-CELL + UU-TOILET	16m <sup>2</sup>
39.	CELL 1	8m <sup>2</sup>
40.	CELL 2	8m <sup>2</sup>
41.	CELL 3	8m <sup>2</sup>



- 1-a El- controlled solar shading system (motor)
- 1-b Roof covering (PVC)
- 1-c Insulation 250mm
- 1-d Enforced concrete ceiling 230mm
- 1-e Security glass (11+11mm)
- 1-f Blind (Alu. blade 12mm)
- 1-g Laminated glass 6+6mm
- 1-h Floor heating/floor (water proof construction)
- 1-i Insulation 350mm

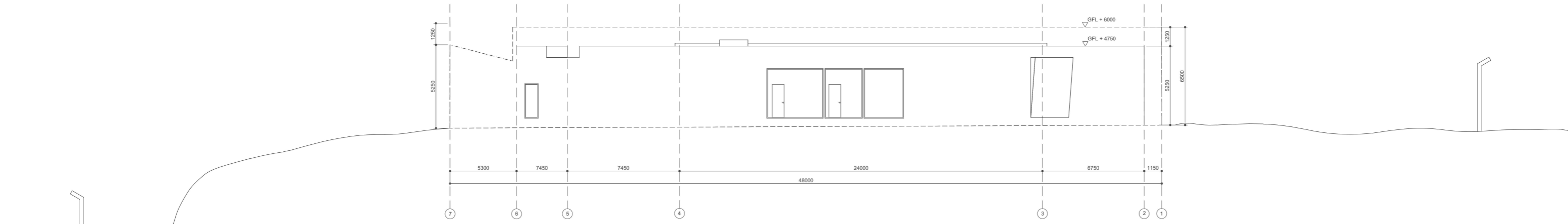
Drawing reference: D1 (d)

Scale: 1 : 50 A3

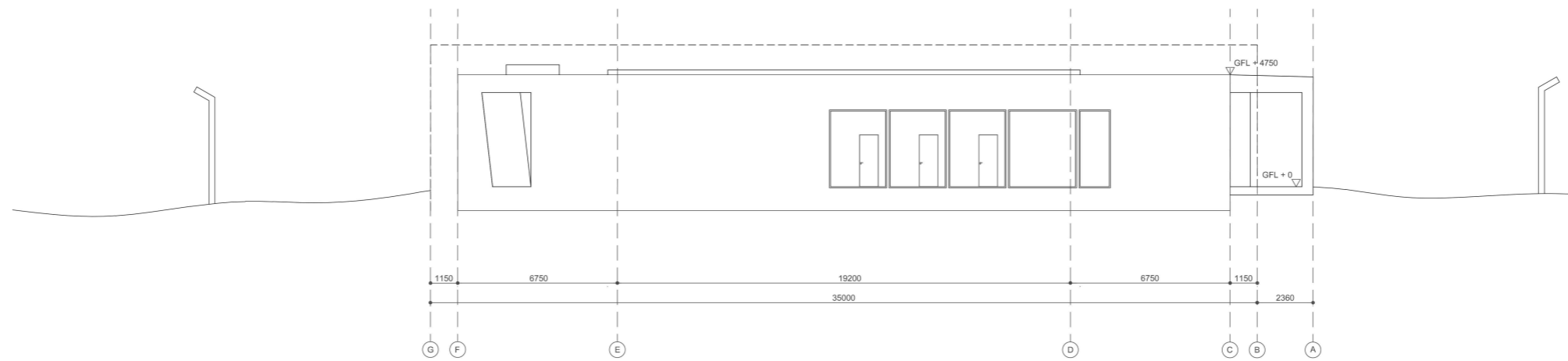


- 2-a Enforced concrete wall w=200 - 450mm
- 2-b Post-tension cable
- 2-c Laminated security glass 4+4mm
- 2-d Ventilation grille
- 2-e Soundproof door
- 2-f Insulation 350mm
- 2-g Roofing (PVC)
- 2-h Insulation 250 mm
- 2-i Technical/Ventilation

Drawing reference: D2 (detail 2)  
 Scale: 1 : 50 A3

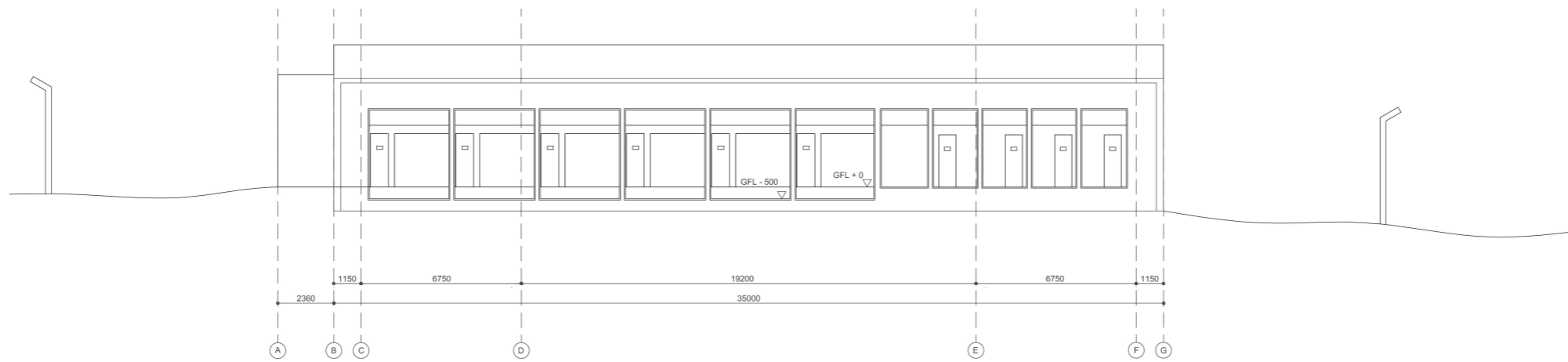


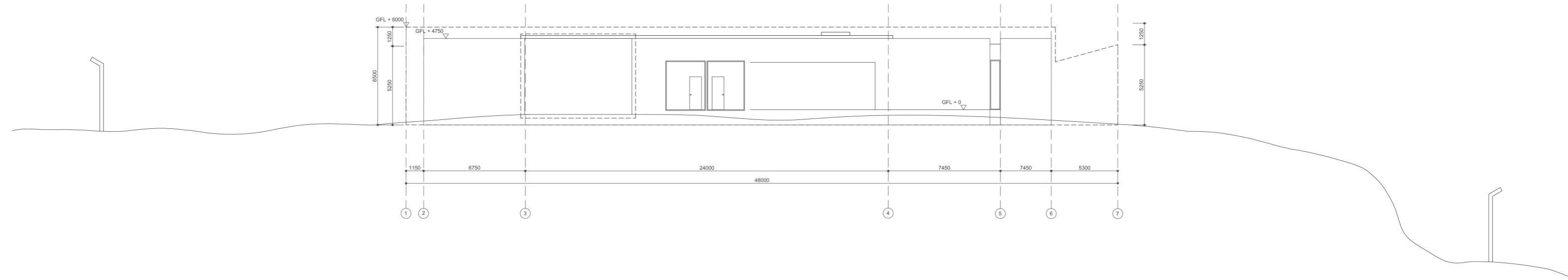
Håkon Mathias Dedic Jansen  
 Diploma: 2018  
 Project: *A House For Prisoners*  
 Elevation: S/E  
 Scale: 1 : 250 A3



Håkon Mathias Dedic Jansen  
Diploma: 2018  
Project: *A House For Prisoners*  
Elevation: N/E  
Scale: 1 : 250 A3







Håkon Mathias Dedic Jansen  
 Diploma: 2018  
 Project: *A House For Prisoners*  
 Elevation: N/W  
 Scale: 1 : 250 A3



