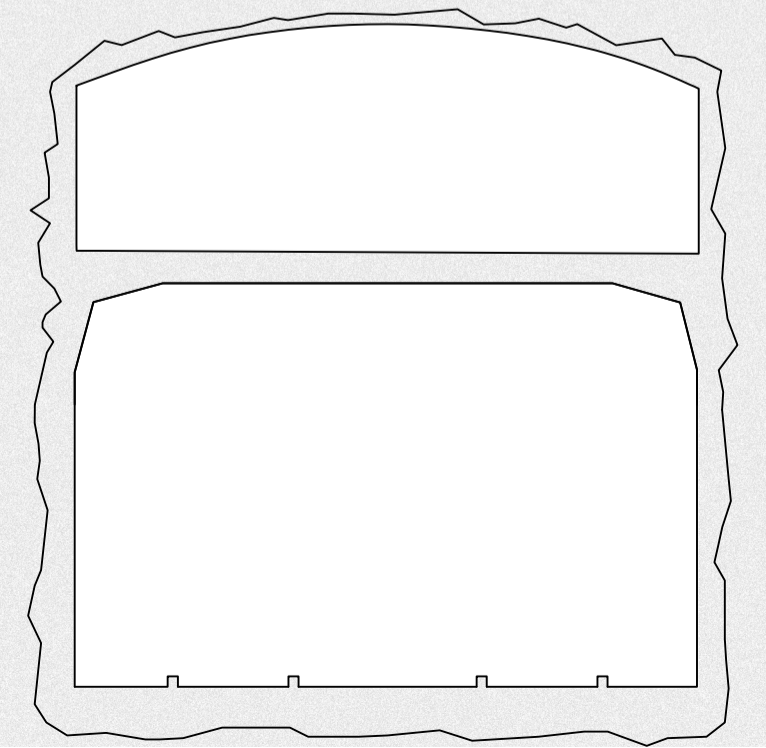
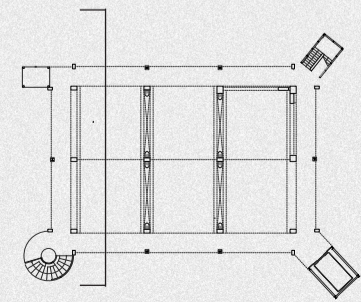
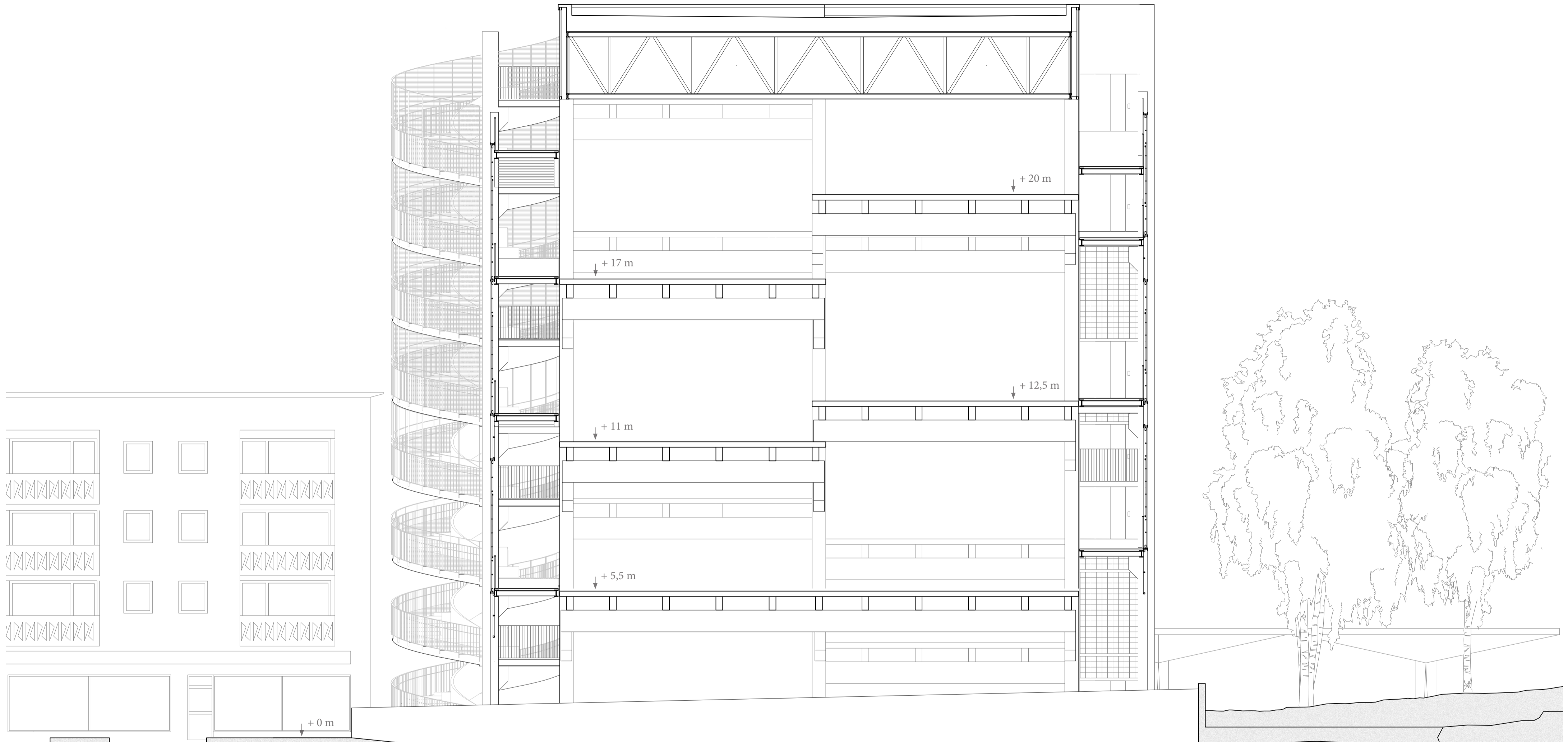


Bedrock Crushed stone Concrete Red asphalt

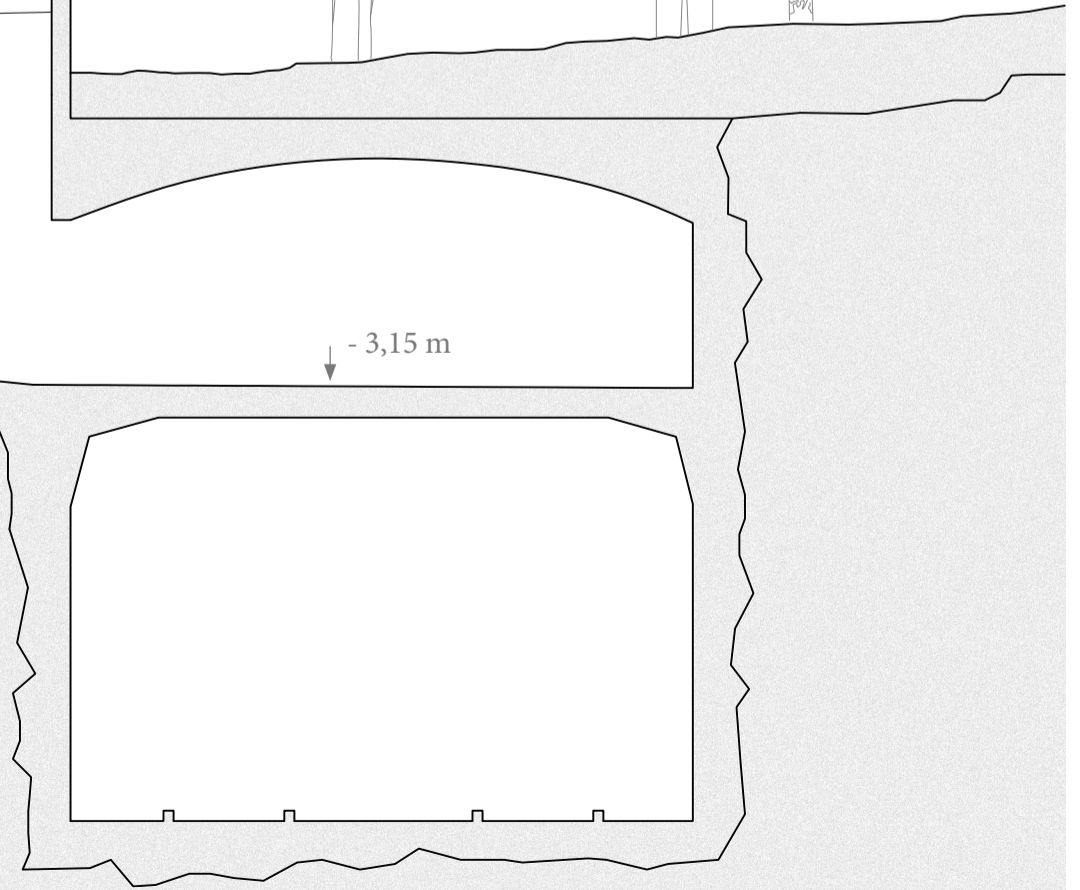
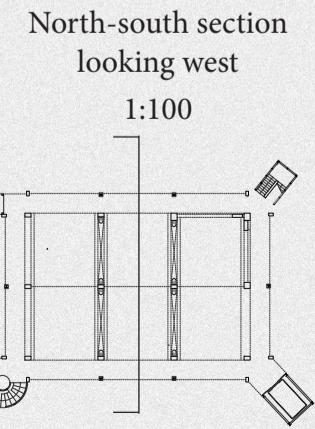
SCALING AND FIXING THE STRUCTURE

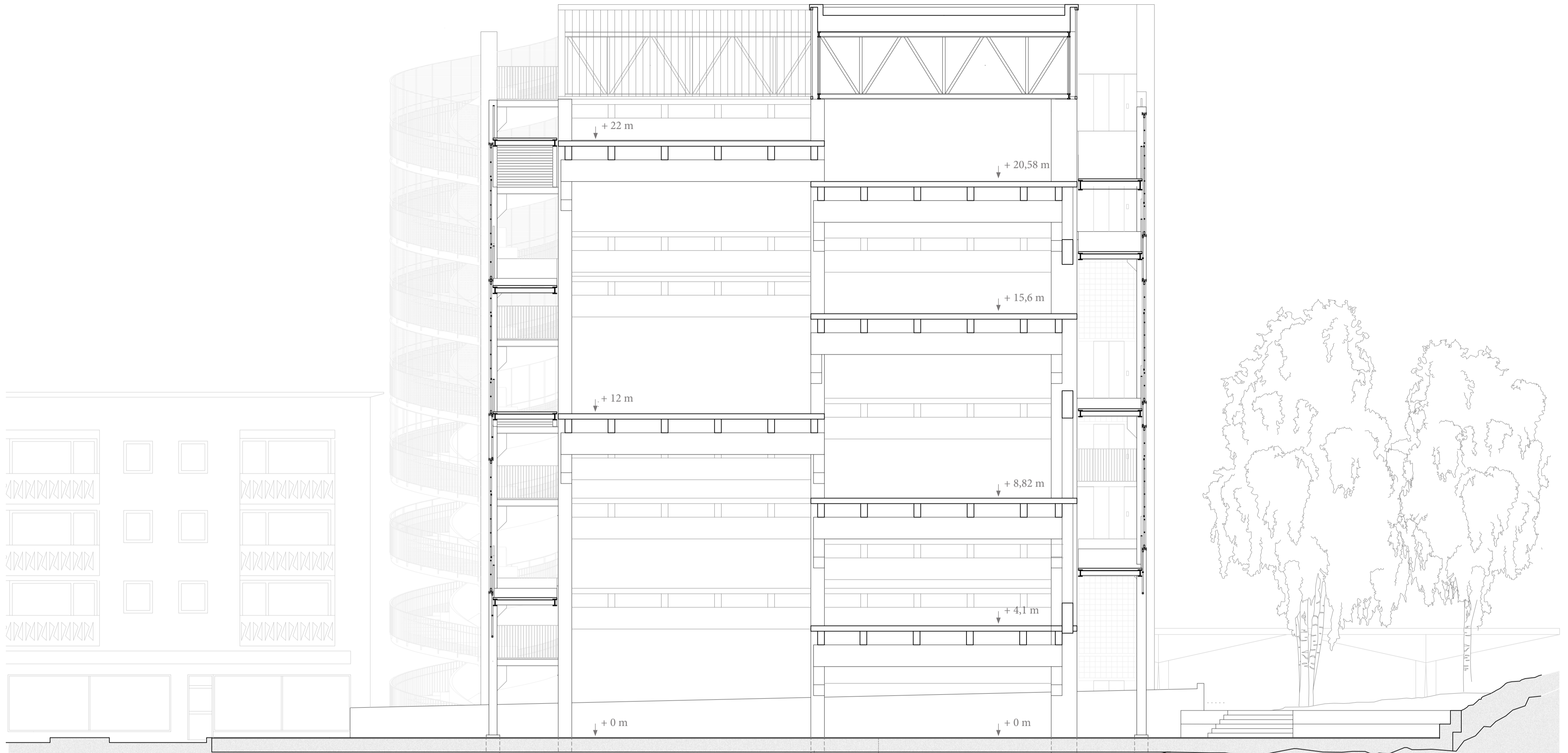
North-south section
looking west
1:100





SCALING AND FIXING THE STRUCTURE

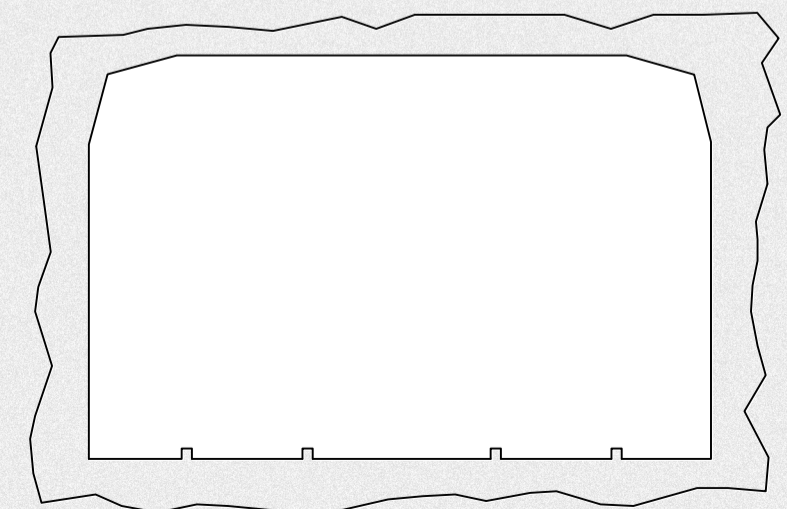
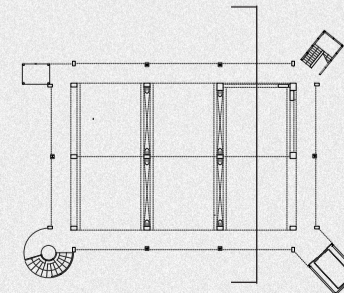


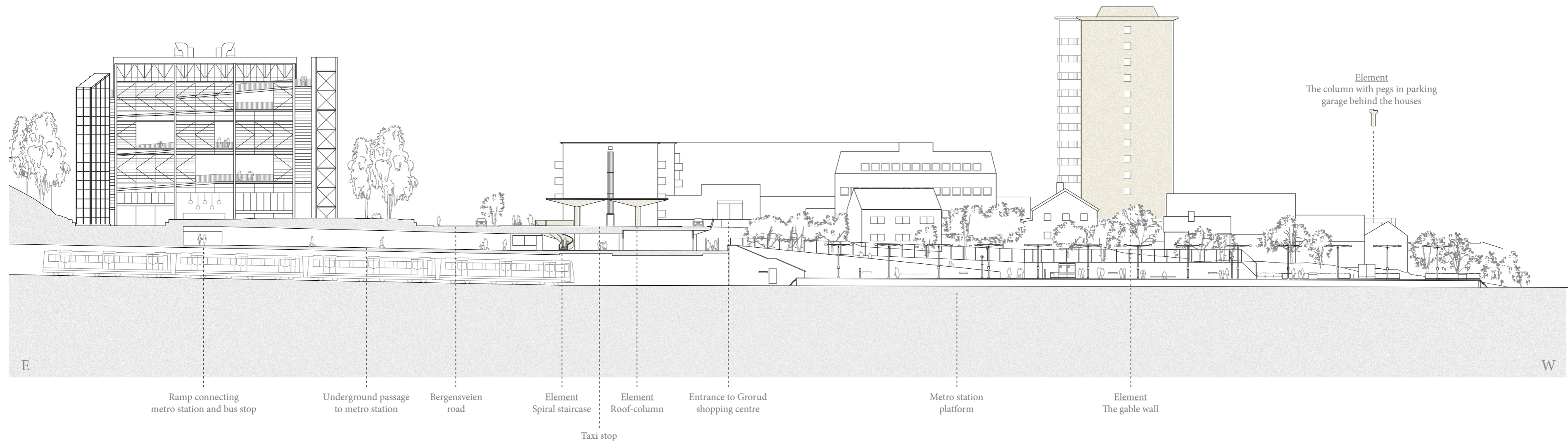


Bedrock Crushed stone Concrete Red asphalt

SCALING AND FIXING THE STRUCTURE

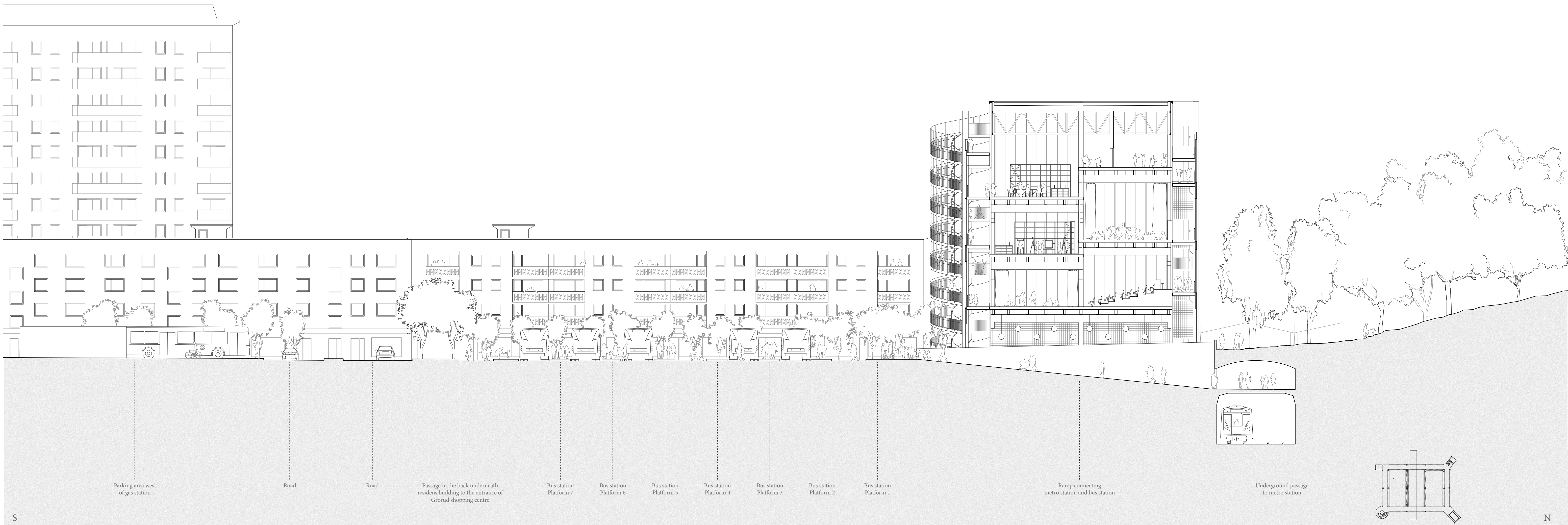
North-south section
looking west
1:100





East-west section of context through the metro station, looking south

1:500



Parking area west of gas station

Road

Road

Passage in the back underneath residents building to the entrance of Gorud shopping centre

Bus station Platform 7

Bus station Platform 6

Bus station Platform 5

Bus station Platform 4

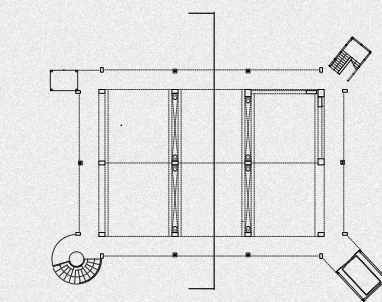
Bus station Platform 3

Bus station Platform 2

Bus station Platform 1

Ramp connecting metro station and bus station

Underground passage to metro station



North-south section through the building and the bus station looking west
1:200