

REINDEER

Akie Kono



This project is about designing
landscape driven exhibition
by Reindeer.

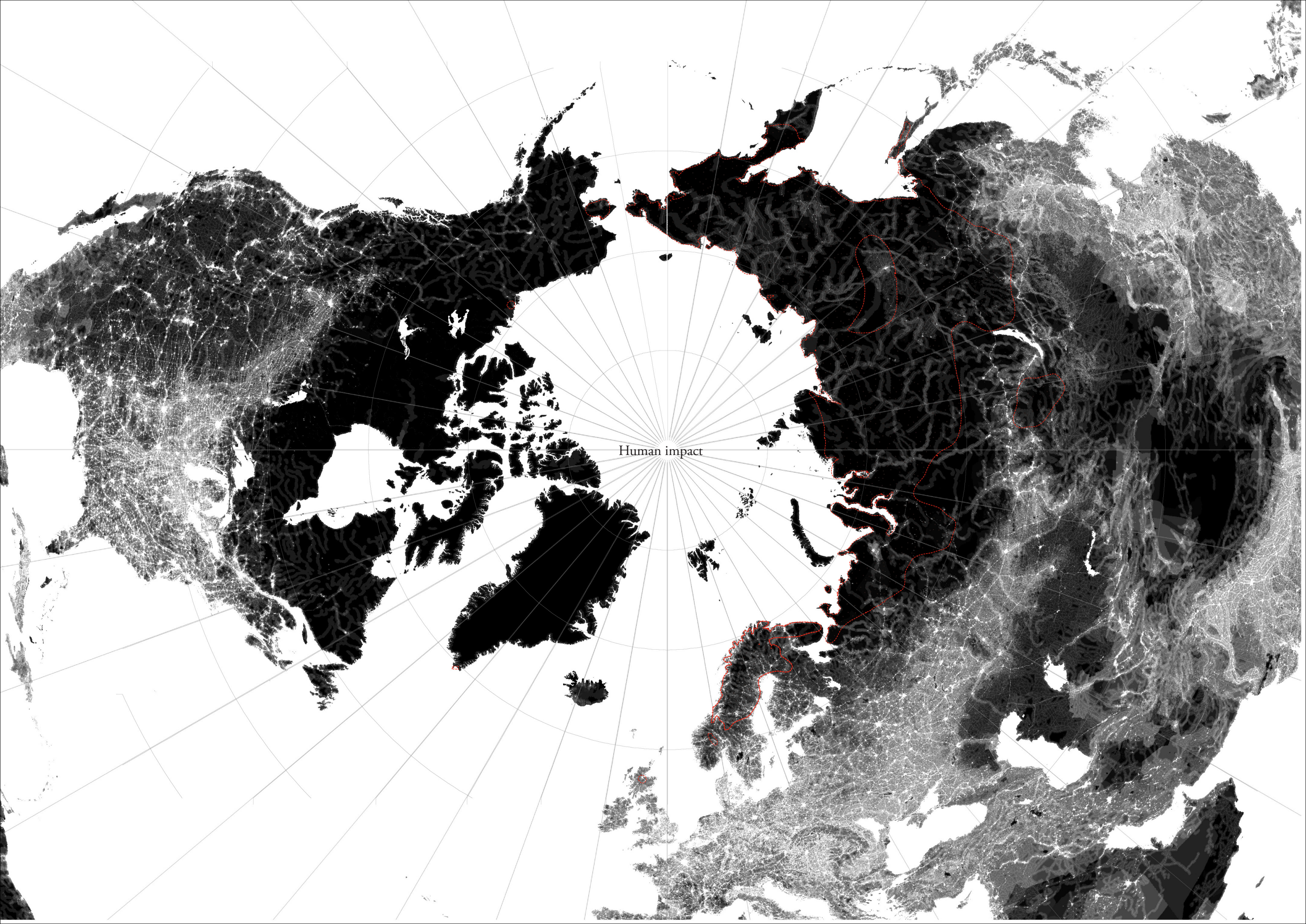
Prologue



The reindeer from the north is herded by minority groups.
The reindeer from the south is best known as Rudolph.
The minority is always conquered by the majority.

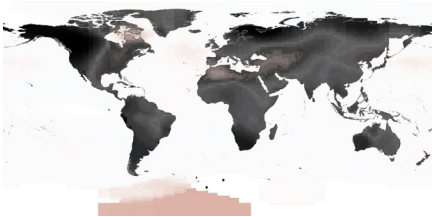
 Reindeer husbandry

Source:
International Centre of Reindeer husbandry, - (2009) *World Reindeer Husbandry: Peoples, Distribution and Challenges. Documentation.*
International Centre for Reindeer Husbandry, Käutokeino.

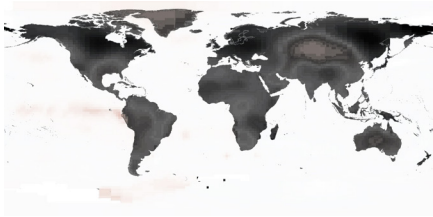


Human impact

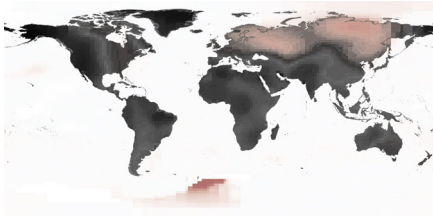
Climate Change



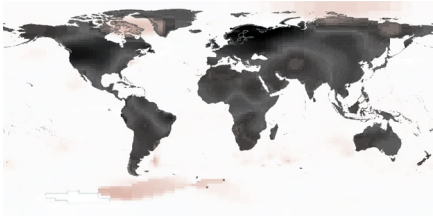
1955



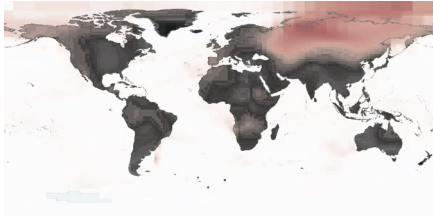
1965



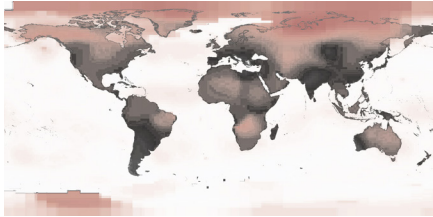
1975



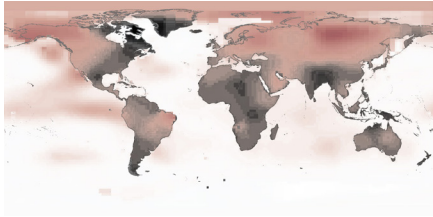
1985



1995



2005



2015



The reindeer herders battling an iron ore mine in Sweden

By Stuart Hughes

Stuart Hughes reports from northern Sweden: "Campaigners argue the mine will be devastating for Sami reindeer herders." **There are eight seasons in the Sami calendar. Each coincides with a stage in the life of their reindeer.**

In the mountains near the border between Sweden and Norway, at the height of the summer season the Sami call Giessele, the reindeer herders mark the newborn calves that are just beginning to roam this land.

For a few short months, the sun never dips below the horizon.

It is a way of life that the Sami, Europe's only indigenous people, have followed for thousands of years.

It is now one they say faces an uncertain future.

A British company, Beowulf Mining, has been carrying out test drilling for iron ore in the area.

Full Frontal Attack on Reindeer Husbandry (NRK Norway)

May 29, 2008 • *Philip Burgess* • Blog

(Map showing extent of one claim in Kvalsund - Wega Mining) At a public meeting in Kvalsund, northern Norway, a full frontal attack on reindeer husbandry was launched by one of the parliamentary representatives for Finnmark, Olav Gunnar Ballo. The meeting had been called to discuss the issue of mining in the region where the international mining company Wega Mining has applied for permission to expand mineral mining, with the support of the local mayor and the majority of participants. Wega owns 18% of Nussir ASA which has the permit to mine what is believed to be Norway's largest copper deposits at Nussir and Repparfjord. Ballo criticised reindeer husbandry for being subsidised, not moving with the times and standing in the way of development. The clip has also been televised. Ballo's comments gained a lot of media exposure. The head of the Sami Reindeer Herders Association of Norway (NBB), Nils Henrik Sara was shocked and alarmed at Ballo's comments, especially as he is sitting in the national parliament.

Reindeer herder Mikkel Nils A. Sara stressed that reindeer herders were not against development...

We have already lost areas, We are here every summer, and about 100 people are involved..one third of people have already left reindeer husbandry. Cabin building for example, has meant that we have to give away areas. We believe that we can coexist with mining but it needs to be fair and we have to look at the consequences of encroachment. We want

You are here: [Home](#) / [Business](#) / [Arctic interests clash over mining](#)

Arctic interests clash over mining

October 21, 2013

[SHARE](#)
[FB](#)
[TW](#)
[G+](#)

The recent discovery of new and potentially lucrative mineral veins containing copper in the mountains above the Repparfjord in Finnmark looks set to stir up more conflicts over natural resources in Northern Norway. The mining company involved wants to dump its tailings in the fjord, and that's set off protests from the fishing industry and environmentalists.

The fjord is dubbed as a "nasjonal laksefjord," known for its salmon, and the fisheries directorate is among those seeking to block efforts to use the sea for disposal of mining debris.

The indigenous Sami people in the area, meanwhile, are also concerned over what more large-scale mining operations conducted by Nussir ASA will mean for their reindeer herding, while concerns also have arisen over the sheer invasiveness of the mining operation.

Platinum Drilling Starts near Lovozero, Kola Peninsula

February 14, 2008 • *Philip Burgess* • Blog

(pic from Barents Observer) In a press release from Vancouver, Centrasia Mining Corp. announced that drilling has started on its 100% owned, Tsaga Platinum Group Metals ("PGM") prospect on the Kola Peninsula, Russia – adjacent to Lovozero and in a region of reindeer husbandry. The Tsaga property covers an area of 1,970 square kilometres and is adjacent to the north border of Barrick Gold Corporation's Fedorova Tundra PGM deposit and Consolidated Puma Minerals Corp.'s East Pansky deposit, and Pana PGM's North Reef PGM deposits.

ARCTIC DEEPLY

In-depth coverage of the changing Arctic. Always noise-free, always trustworthy. Learn more about us.

[CONNECT WITH US](#)
[TW](#)
[FB](#)

[Topics](#) • [Executive Summaries](#)
[Articles](#)
[Community & Insight](#)
[Background](#)
[Search](#)
[About](#)

NORTHERN PEOPLE & HEALTH

[ARTICLES](#)
[GENERAL](#)

[Share](#)
[Tweet](#)

TAKE PART: Finland's parliament is considering a bill that could give logging, lakebed gravel mining and tourist fishing priority over the preservation of some of Europe's last intact boreal forests – and the endangered species and reindeer herders that rely on them.

Mining and Reindeer Can Mix According to Senior Politician, Norway

April 13, 2010 • *Philip Burgess* • Reindeer Herders

A multi stakeholder seminar was held in the Kautokeino, Norway yesterday which focussed on the issue of mining in Finnmark, an issue of some controversy in the region since the passing of the Finnmark Act which devolved desicion making powers over multiple resource issues to the region of Finnmark. The seminar was attended by the leader of the EALAT project and several EALAT partners including the leader of the Sami Reindeer Herders Association of Norway. Heavyweight politicians were present, including the Parliamentary leader of the governing Labour Party Helga Pedersen and the leader of the mining company Store Norske Gull, who have been active in staking claims most particularly in the Karasjok region. Pedersen was unequivocal in her support for the future development of mining in the region, which reindeer herders fear will mean the further erosion of winter pastures that are already under duress. Pedersen told NRK Sami Radio

Both Finnmark society and the Sami community is entirely dependent on new activity. If one is to preserve the culture and language we are going to have to have new jobs for the youth in the Sami villages. You can not save the Sami culture simply by having Sami kindergartan at Tøyen in Oslo and expect it compatible with safe letter. It has to happen here

Loss of Pastures: Balsfjord Power Line Gets Final Approval

May 5, 2015 • *Philip Burgess* • Blog, Challenges, Reindeer, Reindeer Herders

Last week the Balsfjord to Hammerfest power line **received final approval from the Norwegian government** (Ministry of Petroleum and Energy). Construction can now begin. This is a major investment by Statnett (3–4 billion NOK) in a 420 Kv power line that will be 360 km long, 40 metres wide and cross 8 municipalities (Statnett).



The route of the Balsfjord power line. Source: statnett.no

It will cross **30** reindeer herding districts in northern Norway and have dramatic impacts on some districts, according to herders. Herders have been vociferous in their opposition to the project and have asked for it either shelved or that significant route alterations be undertaken, or that areas critically effected could have submarine/underground construction.

Acting Head of NRL, Per John Anti believes the consequences for reindeer herding in the area **will be negative**.

It will particularly impact on calving country. Research shows that the reindeer avoids areas from one to four kilometers from the disturbance, particularly females with calves. This causes pressure in other areas of these regions.

IGE Nordic Mining Plans in Ábboráŝša Reindeer District, Kautokeino

February 5, 2008 • *Philip Burgess* • Reindeer Herders

IGE Nordic, the daughter company of mining giant International Gold Exploration unveiled their for the former gold mine of **Biedjovággi**, 40 km West of Kautokeino. ICE Nordic visited Kautokei week having meetings with the municipality and reindeer herders from the Ábboráŝša reindeer district in whose area the mine is to be redeveloped. In an interview with **NRK Sami Radio**, Frede Bratt, ICE Nordic Director said,

Biedjovággi is one of our three highest priority projects

They could be up and running within months. 50 work places were spoken of, lasting 20 years, estimates of three tonnes of gold available for mining. ICE were recently listed on the Oslo Stock Exchange and are active in reopening the Stekenjokk mine in Sweden (a Zinc and Copper Ore mine operated between 1976–1988), which would have negative consequences for Vilhelmina Södra i Frostviken Norra Sami communities, according to Rebecca Lawrence of the Sami Council.

Canadian Mine Threatens Traditional Reindeer Husbandry, Sweden

September 11, 2009 • *Philip Burgess* • Reindeer Herders

Area in question - Source: Blackstone Ventures (Press Release, **Saami Council**) The Saami people say a mining project in Northeastern Sweden, proposed by a Canadian company, threatens their traditional way of life and violates their basic human rights, as recognized by the United Nations.

On 31 August 2009, **Blackstone Ventures Inc.**, a Vancouver-based mining company, announced plans to begin test-drilling for minerals on pasture lands considered invaluable to the Saami people. In a press release, circulated in Canada the same date, Blackstone further announced its plans to mine in the disputed area (**See this material here**). The Saami communities have not agreed to such test-drillings. Furthermore, Saami community members do not recognize the company's right to drill, noting that the company does not hold the relevant permits to drill and lacks a work-plan, approved by the reindeer herders.

"This is the heart of our land," says Marja Skum, a spokesperson for the communities. "This is where the reindeer come to calf, and where they find the richest pasture. Our forefathers have lived with the reindeers on these mountains since time immemorial. We are determined to pass the legacy on to the next generations. Therefore, we have no choice but to do everything we can to stop this mine. If a mine is established in the planned area, we will no longer be traditional reindeer herders. We will lose the most vital part of our identity."

LKAB & Swedish Government Deny Funding to Reindeer Herding Villages

March 27, 2008 • *Philip Burgess* • Reindeer Herders

Two Sami villages in northern Sweden have been denied compensation from the state-owned mining company LKAB for the time village representatives spent on planning for the relocation of Kiruna. The reindeer herding villages of Gaban and Leavas first turned to the government for money to make up for time spent tending to the relocation of nearby Kiruna instead of tending to their reindeer. After the government refused the request, they then turned to the LKAB mining company for 500,000 kronor (\$82,000) to cover income loss due to the consultation process.

LKAB is funding the relocation of Kiruna's city centre so the company can continue operating a lucrative mine which has created underground cracks that threaten to sink the city in the coming years.

Read the Full Story Here (The Local.se)

Sami reindeer herders battle conservationists and miners to cling on to Arctic culture

Long winters in -30C temperatures they can handle, but now Norway's indigenous people are fighting to protect ancient reindeer grazing land from development

October 6, 2010 • *Philip Burgess* • Blog

Industry Minister of Norway Trond Giske With Minerals Map of Northern Scandinavia. His government has just announced funding to support the mining industry - Source address.no

So said, the Minister for Industry of Norway (Labour Party) while announcing a big increase in funding for mining exploration in the country in a story that appeared in **Adressa.no**

The Norwegian Geological Survey (NGU) believes there is a vast wealth of minerals and ore under the soil just waiting to be exploiting - only what holds them back is insufficient knowledge. That will soon change thanks to the Norwegian government announcing an extra 100 million NOK (ca. 17M USD)) over four years to searching for gold and other precious metals, mainly in northern Norway.

The first 25 million (4.3M USD) will come in next year's budget, which is presented on Tuesday. This will represent a doubling of the Geological Survey currently receive for such work.

Giske acknowledged that as most of the deposits are in Northern Norway, this may lead to conflict with reindeer herders, but insisted that any conflict between reindeer herding and mining was "fully manageable"

Not according to Nils Henrik Sara, the leader of the Sami Reindeer Herders Association of Norway(NRL), in a reaction in **NRK Sami Radio**.

"It's not as simple as the industry minister told Adresseavisen. But of course for their enforcement system, it might be "manageable" because they do not account for what the reindeer industry says, and thus it is easy for them to get the reindeer industry to follow their terms "

The NRL leader clearly stated that their organization is against all mining in areas used by reindeer husbandry.

FINLAND (HTTPS://INTERCONTINENTALCRY.ORG/NEWS/EUROPE/FINLAND/) / SAAMI (HTTPS://INTERCONTINENTALCRY.ORG/INDIGENOUS-PEOPLES/SAAMI/) / #LEGISLATEDGENOCIDE (HTTPS://INTERCONTINENTALCRY.ORG/NEWS/LEGISLATEDGENOCIDE/)

News (https://intercontinentalcry.org/category/world-news/)

NEW FINNISH FORESTRY ACT COULD MEAN THE END OF SAMI REINDEER HERDING

SÁMI REPRESENTATIVES CALL FOR SWIFT SUPPORT FROM THE INTERNATIONAL COMMUNITY

by **Hannibal Rhoades (https://intercontinentalcry.org/author/h-rhoades/)** and **Tero Mustonen (https://intercontinentalcry.org/author/tero-mustonen/)**

December 7, 2010 • *Philip Burgess* • Blog

"This plateau has really good wind conditions – that's the main reason it's being built here," said Jonas Lundmark from the local council.

"Also 95 percent of the land is owned by two forestry companies and there has been a steady decline in the population over the last 50 years. People living here are very keen to get more business into the area."

By 2020, the wind farm is expected to provide about half of the national target for new wind energy – about 12 terawatt hours – that's roughly the equivalent of two Swedish nuclear reactors, according to the company building the wind farm.

Wind power is a high priority for the Swedish government, and the local power to veto planning applications for wind farms has been removed to pave the way for more of them.

Stefan Lundmark, from the Swedish ministry of enterprise and energy says that the trend across the Nordic countries is to build in northern, more sparsely populated areas.

NATIONAL GEOGRAPHIC

http://news.nationalgeographic.com/2016/03/160301-arctic-sami-norway-reindeer.html

Dodging Wind Farms and Bullets in the Arctic

As Norway looks north for resources and energy, Sami reindeer herders fear for their lands and culture.

Herding reindeer plays an important role in the Sami culture's income and diet. "I fear the government is taking more and more of our land," says herder Danel Oskal. "I'm afraid that in the future, there will be no more land for the reindeer."

PHOTOGRAPH BY SCOTT WALLACE

By **Scott Wallace**

We are for mineral exploration in Inner Finnmark – But it's not that we can say yes all, everywhere and at any price. We must also develop this industry and take account of the environment and to those on the plateau before (mining)

Here she is of course referring to the indigenous Sami, many of whom (especially reindeer herders) have been critical of the current 'gold rush' for minerals that is occurring in Finnmark. Surprisingly perhaps, Pedersen herself is of Sami ancestry and she has been a vigorous supporter of developing mining in the county. Legal researcher, Øyvind Ravna is quoted in the article as saying,

A charge should be introduced which would provide direct compensation to the indigenous Sami people if they are to accept such activities in their core areas

Ravna pointed to the activities of some mining ventures in Canada where First Nations are compensated directly for mining activity on their land. Pedersen is quick to rule out talk of compensation for mining for the Sami, which would be very unpopular among many Norwegian communities,

Meanwhile, in the regional media, the County Mayor of Finnmark is **quoted as saying** that people are

“Companies and Swedish State Both Breach Saami Rights” Saami Council/SSR Press Release

February 21, 2008 • *Philip Burgess* • Reindeer Herders

JOINT PRESS RELEASE by the Saami Council and the National Swedish Saami Association 2008-02-21

Saami areas in Sweden are currently experiencing an explosion in mining and windpower development. There has been an increase in both Scandinavian and foreign companies in prospecting, mining and windpower. Ironically, while many of these companies market themselves to investors based on principles of Corporate Social Responsibility, companies often fail to see the connection between the impacts of their activities and the rights of Saami people.

"The Saami Council and the National Swedish Saami Association are in dialogue with several companies, one of which is Blackstone Ventures Inc. This is a Canadian exploration company, who claim to respect the rights of indigenous people in Canada. At the same time, the company seems to have no problem with performing intrusive exploration activities in sensitive Saami reindeer herding areas in Swedish nature reserves", says Mattias Åhrén, Head of Human Rights at the Saami Council.

The Saami Council and The National Swedish Saami Association (SSR) are demanding that companies and the Swedish state both take responsibility to ensure that Saami rights are protected before development projects – such as mining and windpower – go ahead.

FINLAND (HTTPS://INTERCONTINENTALCRY.ORG/NEWS/EUROPE/FINLAND/) / SAAMI (HTTPS://INTERCONTINENTALCRY.ORG/INDIGENOUS-PEOPLES/SAAMI/) / #LEGISLATEDGENOCIDE (HTTPS://INTERCONTINENTALCRY.ORG/NEWS/LEGISLATEDGENOCIDE/)

News (https://intercontinentalcry.org/category/world-news/)

Mining threatens Sami reindeer grazing

Many might consider reindeer herding to be some kind of idyllic life. But it has its darker side. Anxiety, depression and the struggle for land are eroding the powers and vitality of young herders, and this appears to be particularly the case in Sweden at the present time, though anecdotally it is known that this is a challenge for young people across the world of reindeer husbandry. In Sweden, 1 in 3 young herders (18–29) have considered suicide.

Three excellent articles in NRK Sapmi by Liv inger Somby this last week on this difficult topic. The first is an interview with Petter Stoor, a Sami psychologist who works at SANKS (Samskisk nasjonalt kompetansesenter – psykisk helsevern go rus), based in Karasjok, Norway. SANKS is now the only institution in the Nordic countries that has expertise in culturally adapted suicide prevention among Sami, including culturally and linguistically adapted clinical psychiatry. Stoor stated **in the article**

There are complex reasons [for suicide]. Reindeer herding is a confrontational environment on many different levels. Everyday is very tough with the struggle for land. Constantly one has to fight in order to operate a profitable pastoralism. The range is huge and very complex, ranging from external to internal conflicts and family problems, which can lead to the youth gets tough in everyday life. Many feel their situation as heavy, they cannot mastered their defeats.

Great stretches of Europe's last wildernesses risk being damaged and polluted as the international mining industry gears up to develop northern Finland, Sweden, and Norway in search of uranium, iron ore, nickel, phosphorus, and valuable rare earth minerals, according to environmentalists.

The prize for British, Australian, Canadian and other companies is billion-dollar mega mines in Lapland, a region which covers all three countries and Russia, able to supply burgeoning industry in Asia.

This project is not a one which deal with a specific site where conflicts have already happened,
but the one that would affect human mind, especially in the south, not to repeat these conflicts.
revealing the value and vulnerability of reindeer,
as cultural landscapes.

Chapter I

- Book -

REINDEER

Frozen Heart

heart

It burns my hands as it is too cold.
Reindeer burns our heart.
Because they are cute? or they are Rudolph?
Because
they tell us the beauty of the Arctic.



Washed Stomach

stomach

First, thaw frozen internal organs. Second, let inside out and wash it well.

Then, back it as the first position.

The shape become different from the original one.

Like as it is almost impossible to be back the life in the past.



Steak

meat, salt, pepper, herbs, butter, cream sauce, lingon berry sauce,

Meat sautéed in a pan with cream and berry sauce.

It was a special dinner.

Spending time with family or friends,
like herders family's ordinary.



Packed Dried Meat

meat, salt

Herders have it to survive in a mountain.
It provides rich protein and is an important source of their energy.

There,
power plants exploit their pasture.



Winter Boots

skin, yarn

Pointed toes are for hooking ski boards.
Reindeer skin does not get wet on snow ground.
So, this is perfect for skiing.
But it is not a necessity anymore for herders.
They might need skating shoes today.



Hay

dried grass

This is used in winter, for reindeer,
not to starve.
They can dig snow,
but not ice.
I can hear their sigh, more and more.





Unlearn the common perception of a reindeer
and you are one step closer to understand their deeper nature.

Not as Rudolph,
but as Cultural Landscapes.

Chapter II
- Exhibition -

Not only in the book, but the knowledge could be experienced in a space.
Spacial mind experience.

0. Museography

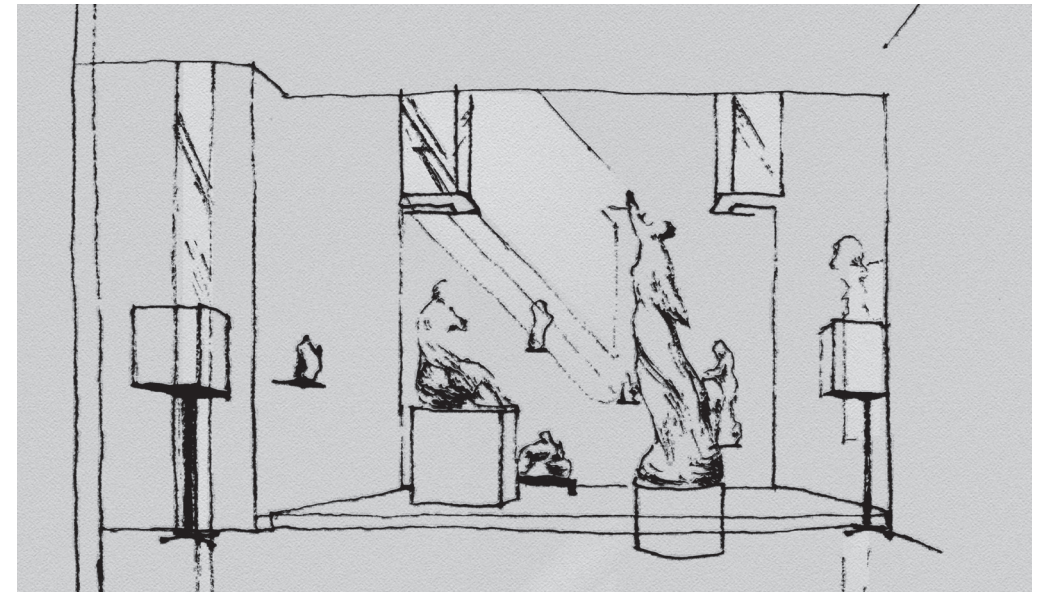
- Typology of Exhibition Space -

Encyclopedic



focusing objects itself
e.g. The British Museum

Scenographic



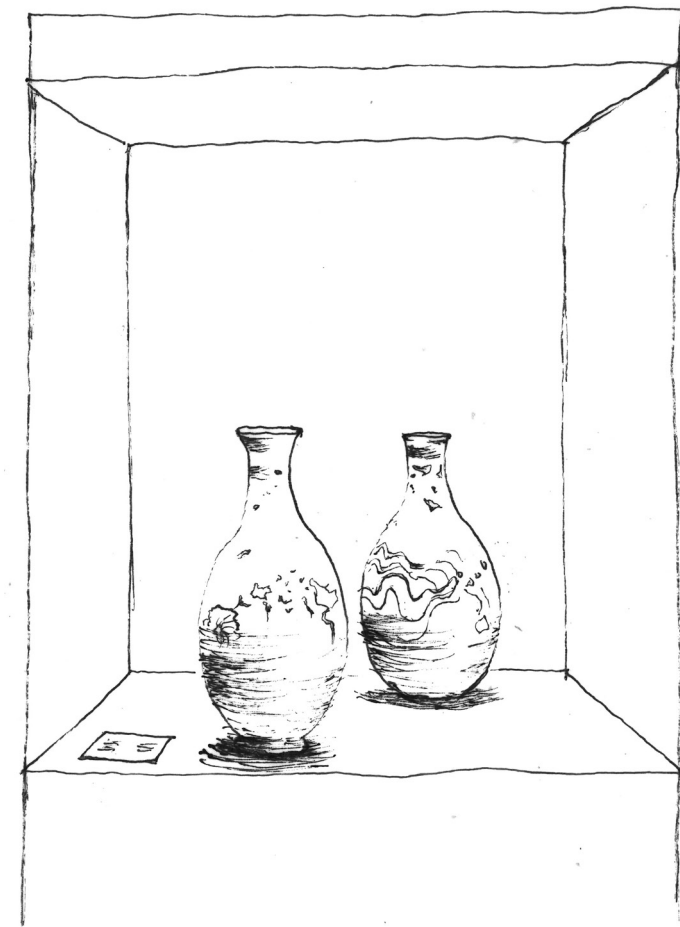
Objects for a space
e.g. Canova Museum (by Carlo Scarpa)

- Display Methodology -

Encyclopaedic Case

- The British Museum -

Objects in a box.

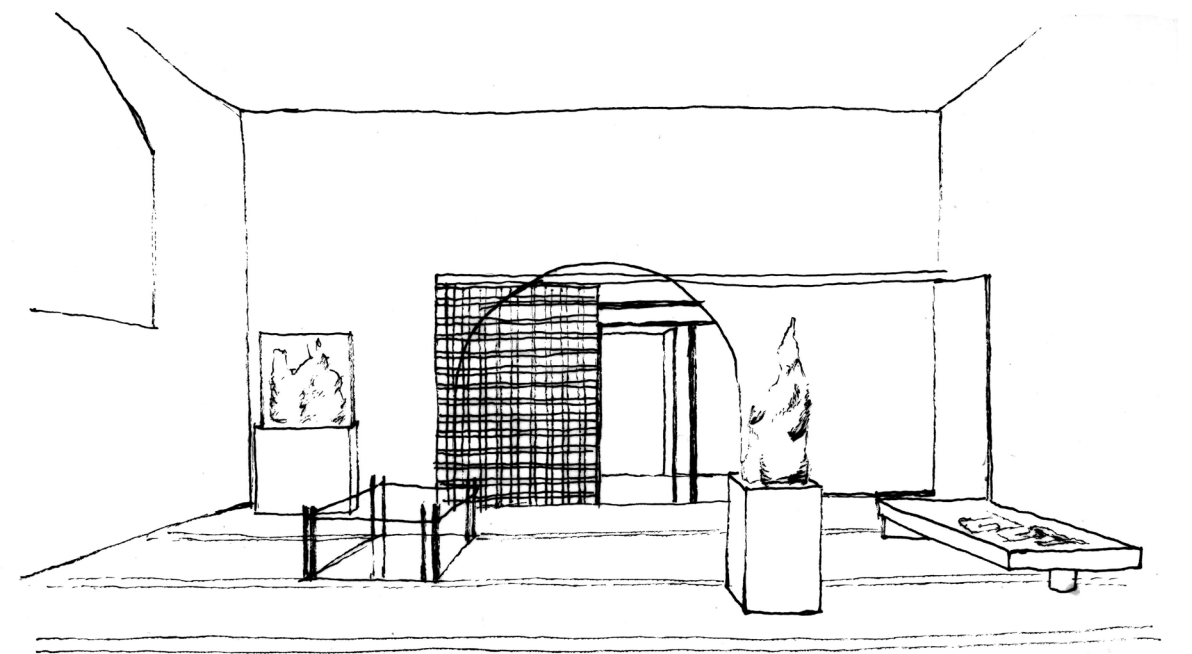


Scenographic Case 1

- Carlo Scarpa -

Architect

Objects as an interior,
a part of details.

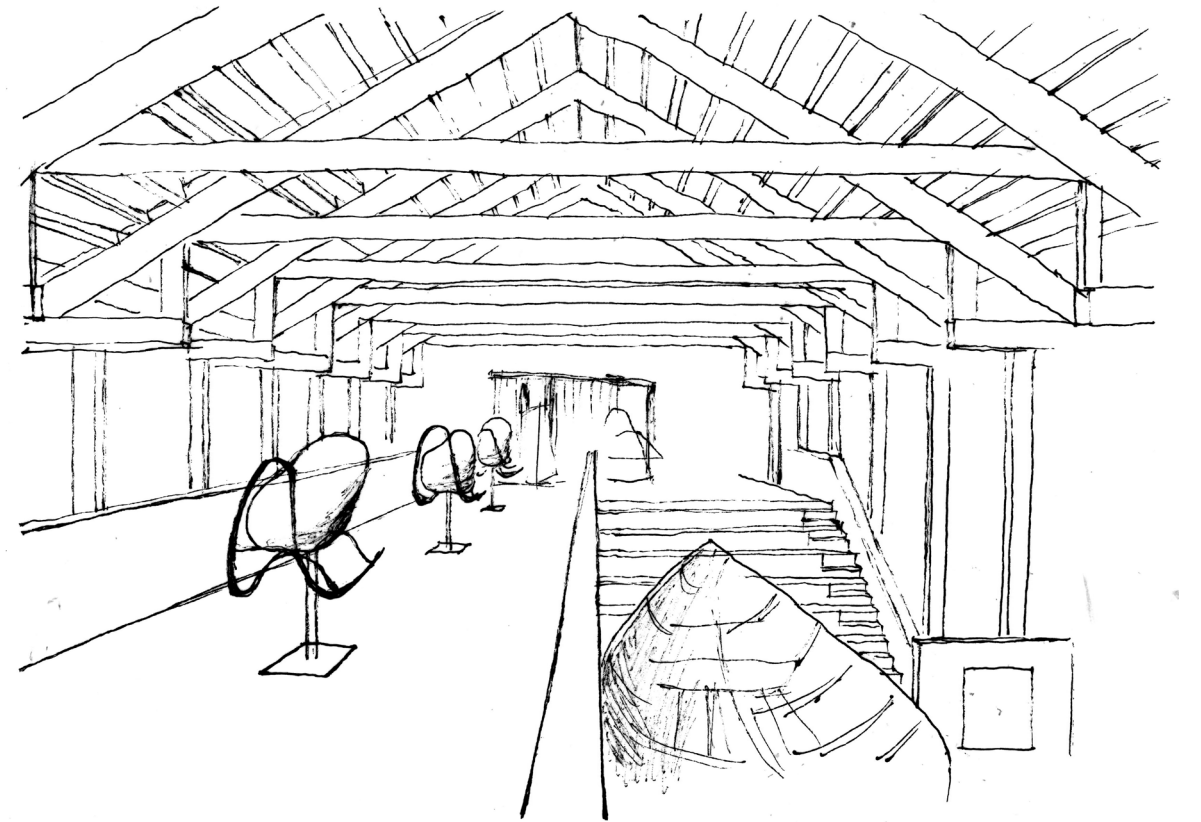


Scenographic Case 2

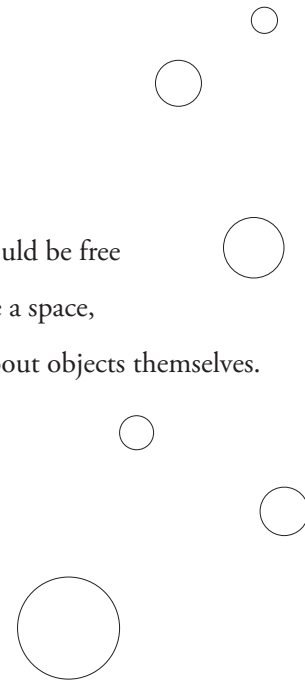
- Sverre Fehn -

Architect

Objects like a landscape,
as a scenery of the space.

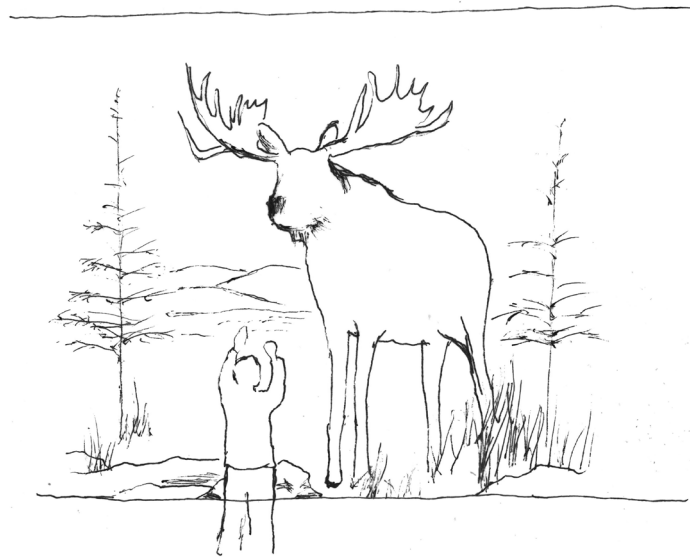


Objects could be free
to create a space,
but still need to talk about objects themselves.



- Exhibition of Animals -

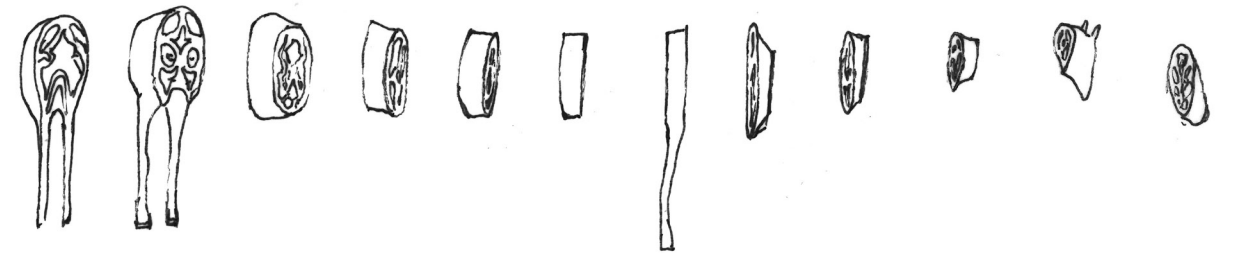
Natural History Museum



e.g. The Academy of Natural Sciences, Philadelphia, US.

Biological facts
by showing as it is

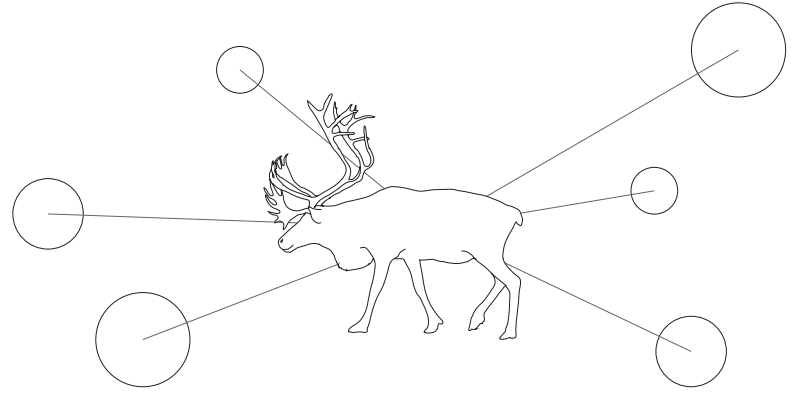
Art



e.g. "Some comfort gained from the acceptance of the inherent lies in everything" by Damien Hirst.

Emotional issues
by transformation

Landscape Exhibition



Cultural facts as Landscape issues

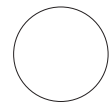
||

Cultural Landscapes

by designing a space

- Curation by different professions -

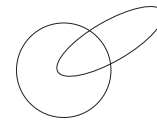
Historian/Researcher



Object

Educational/ Scientific knowledge
from research

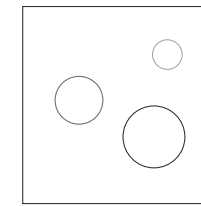
Artist



The object

Creative/ New perspective
from the artist her/himself

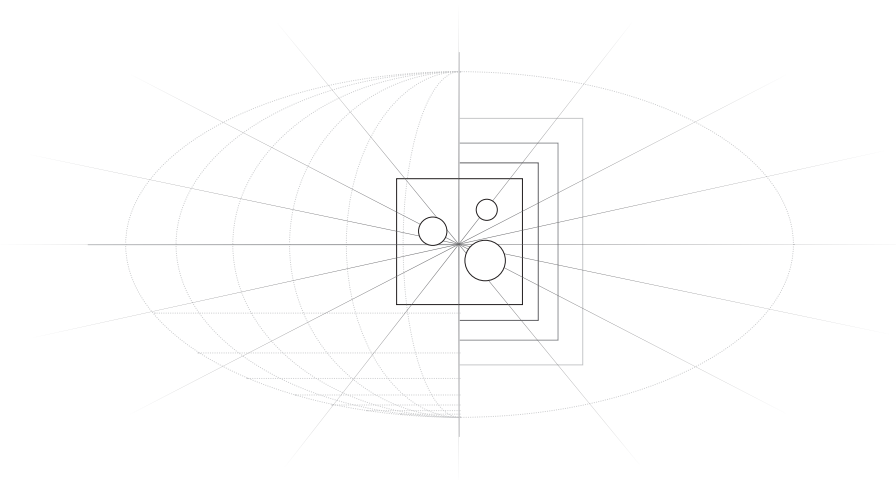
Architect



Objects

Spacial/Aesthetic experience
from planning

Landscape Architect



- Object
- Physical space
- Physical space (outside)
- Mental space

Objects are landscape itself
as it tells about the relationships between human and reindeer,
the life in landscapes.

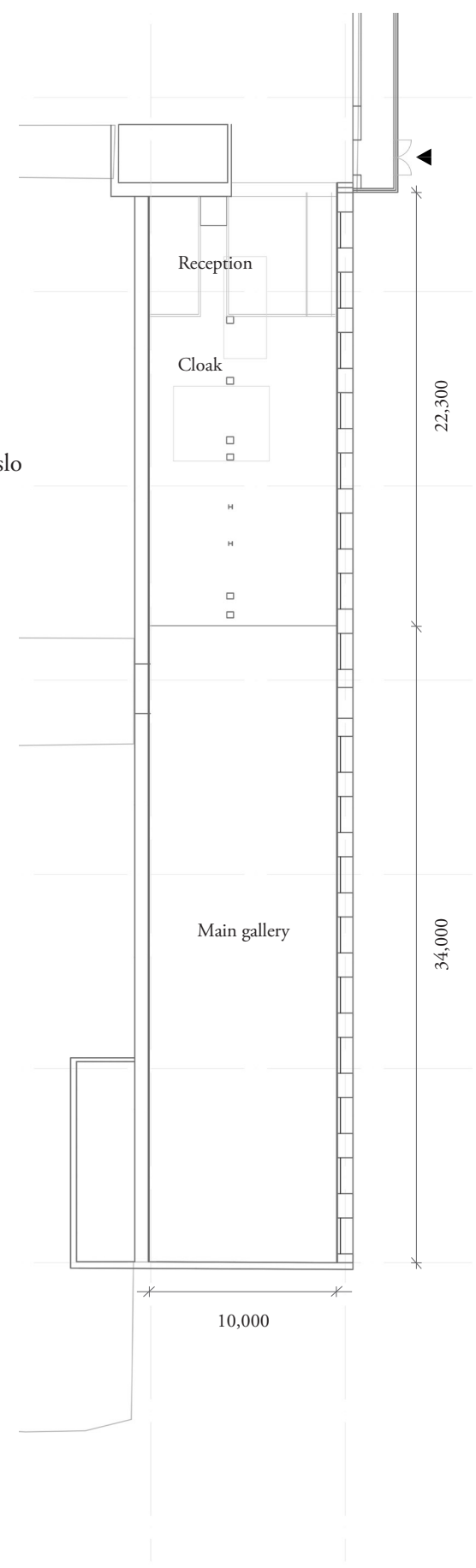
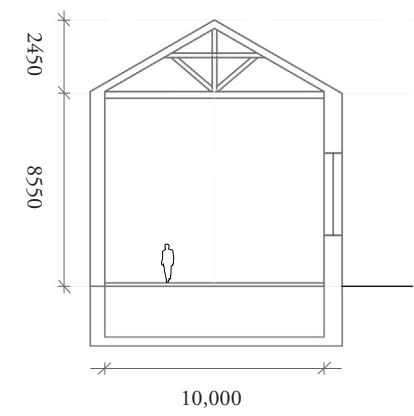


Landscape Exhibition 'Reindeer'

Focusing on objects.
Experiencing a space as a knowledge of Cultural Landscapes.

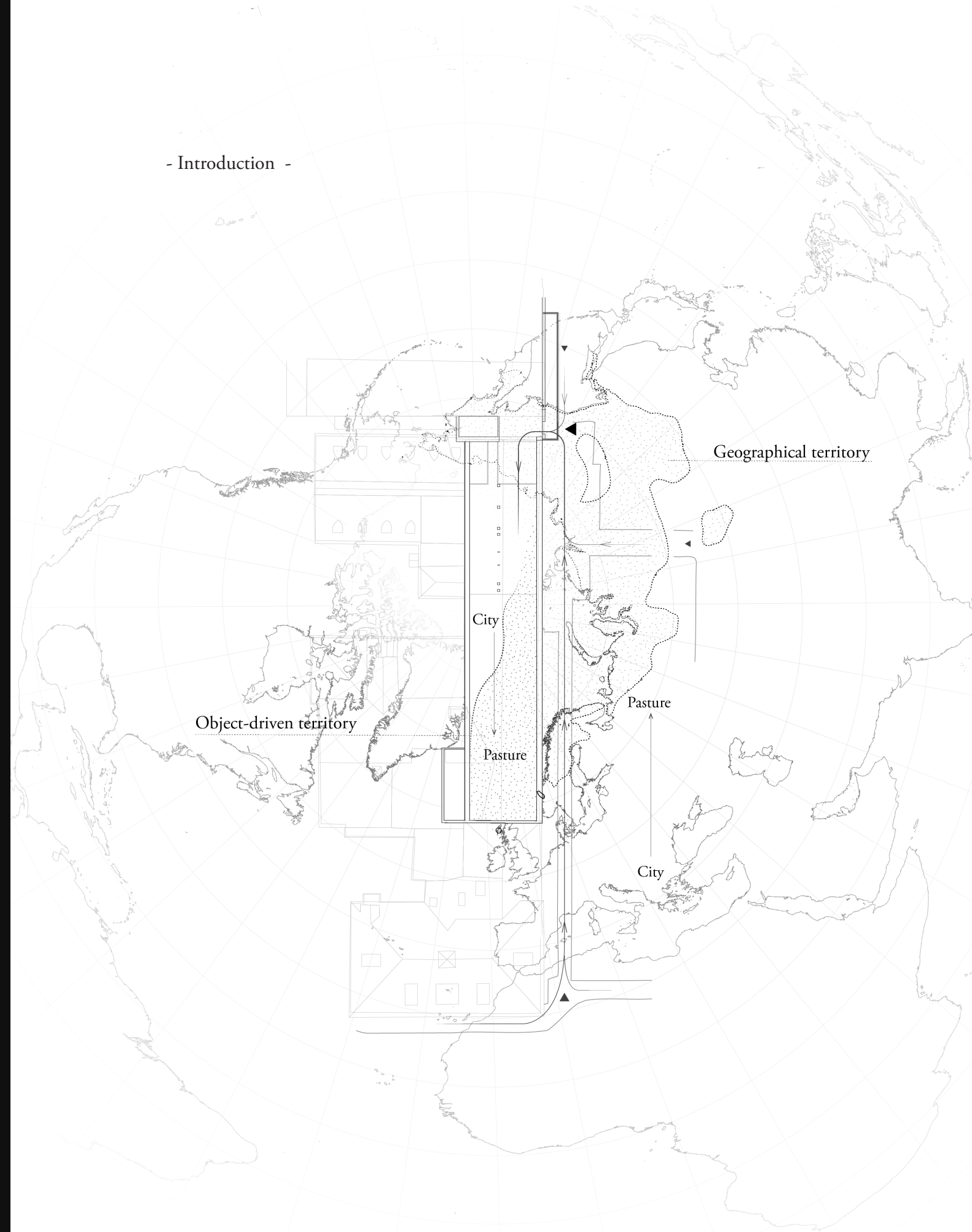
1. Space

DogA (The Norwegian Design and Architecture centre), Oslo
Exhibition area: 34m x 10m, Height: 8.5m



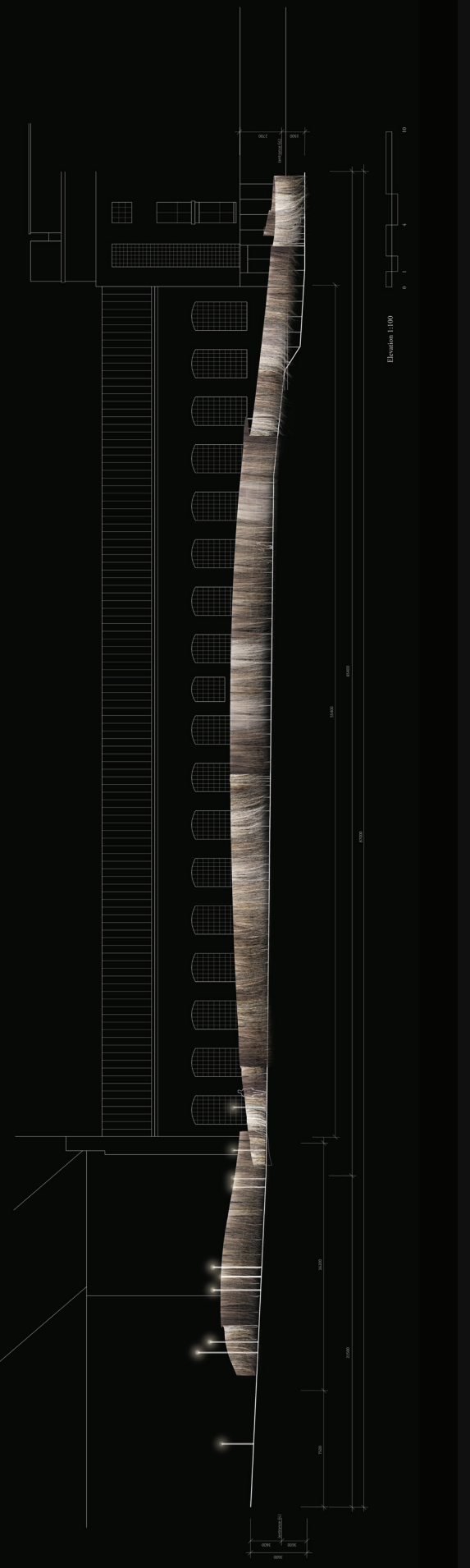
2. Spacial Context

- Introduction -



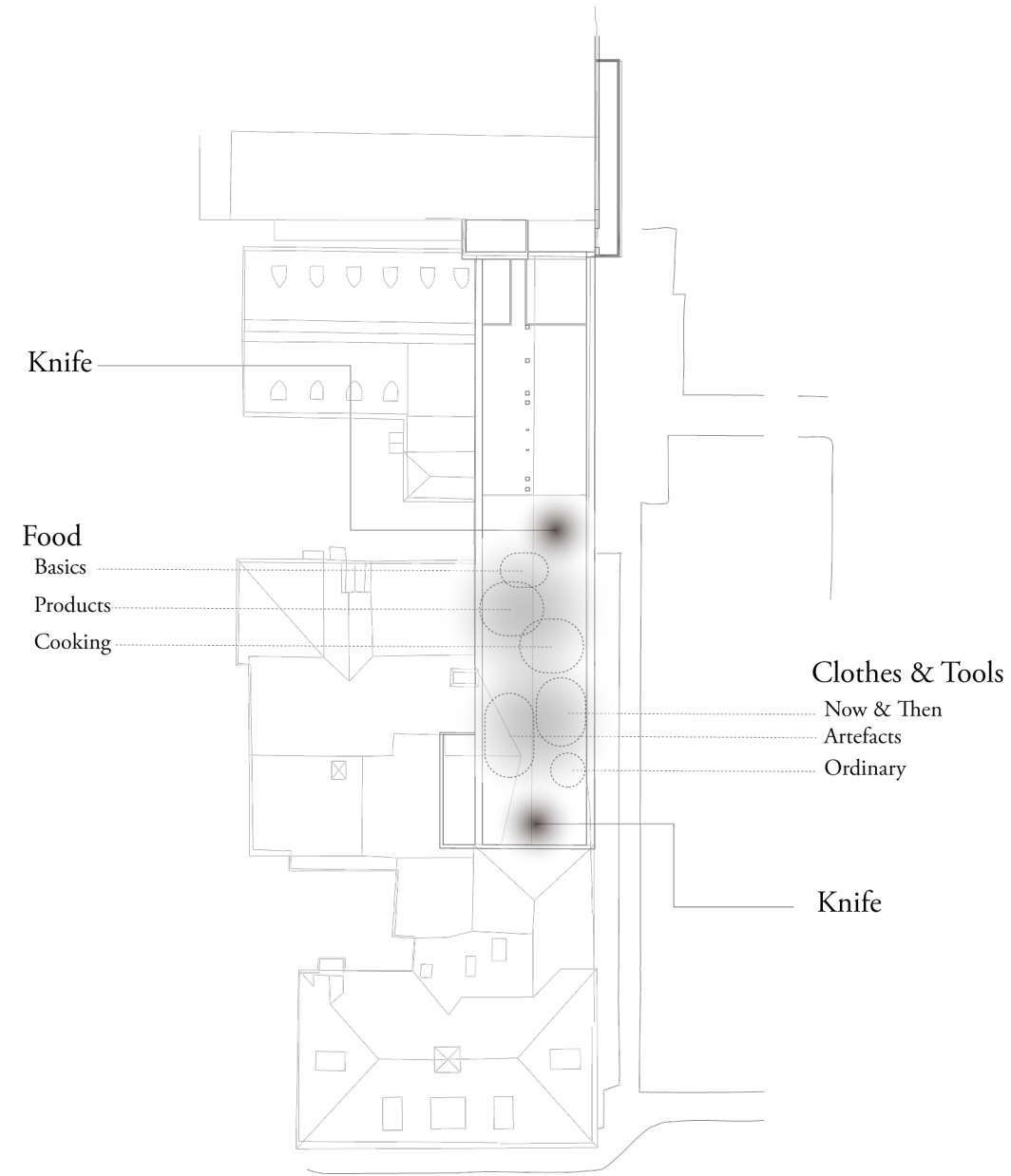


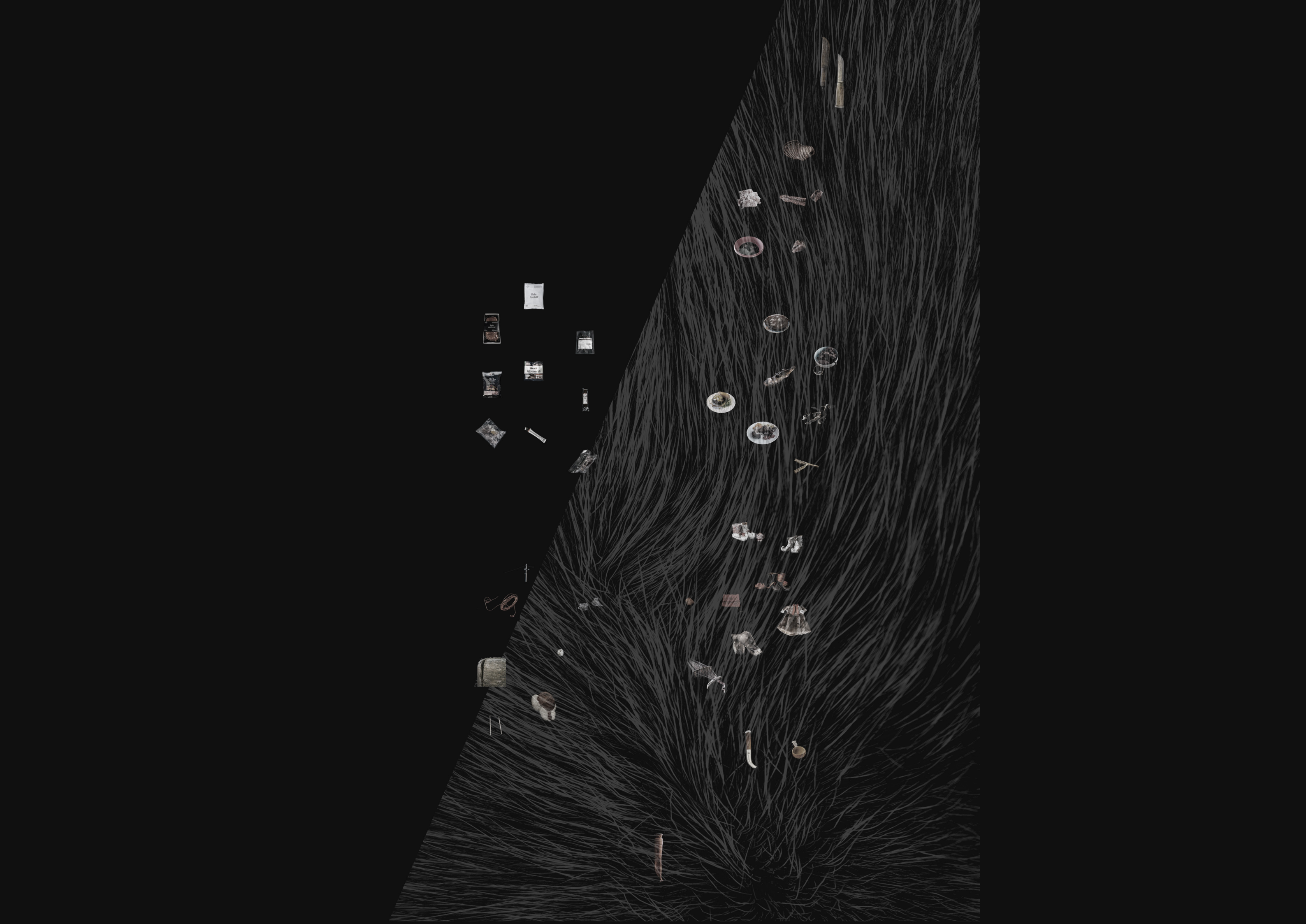
Plan 0 10m



Elevation 0 10m

- Contents -







3. Design Medium

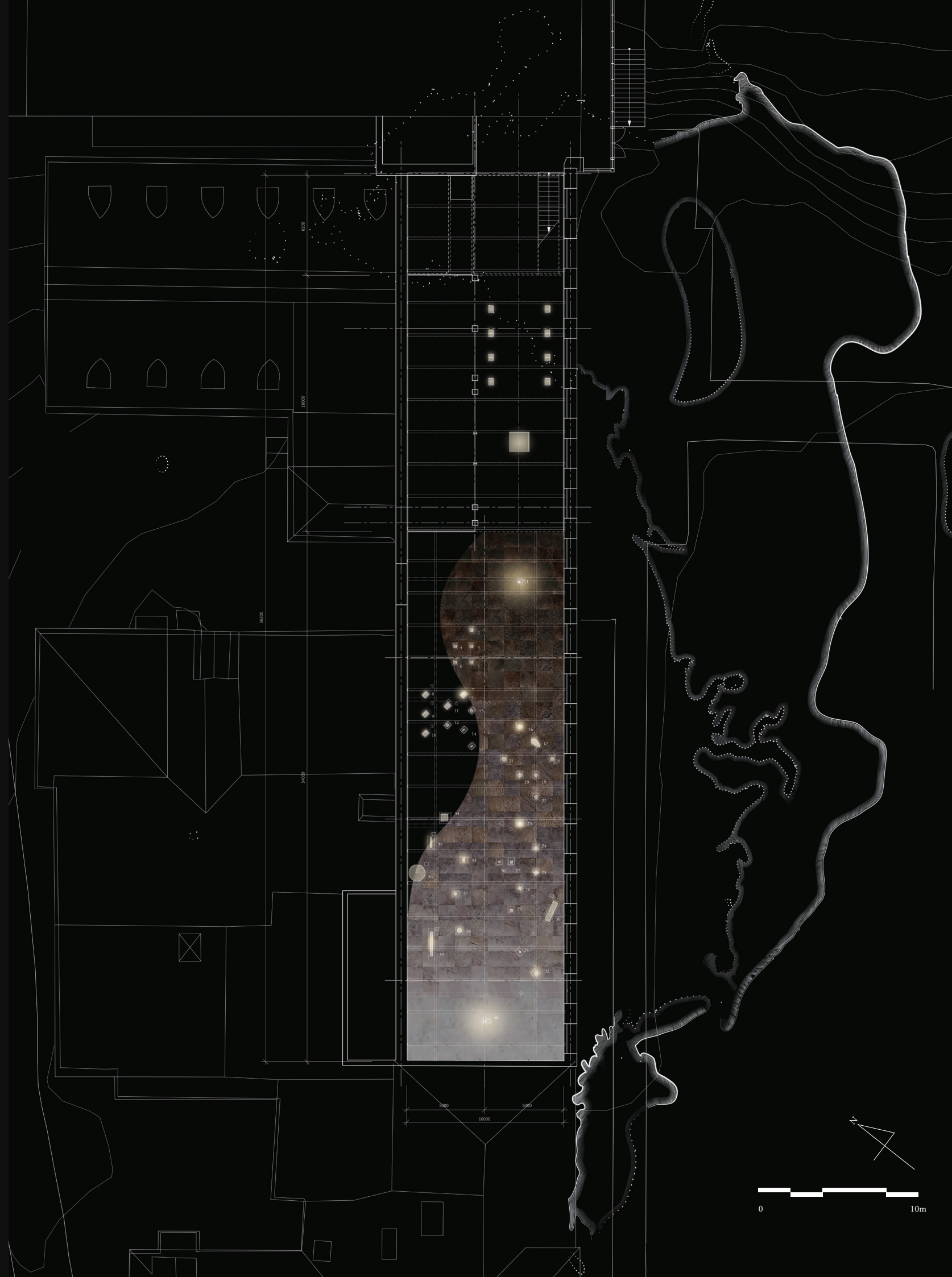












4. Objects

Knife & the Case

skin, yarn, birch, steel

They order this kind of knife to local craftsman.

So it is from Scandinavia, even the blade.

He opened plastic cover of hay

by his knife.



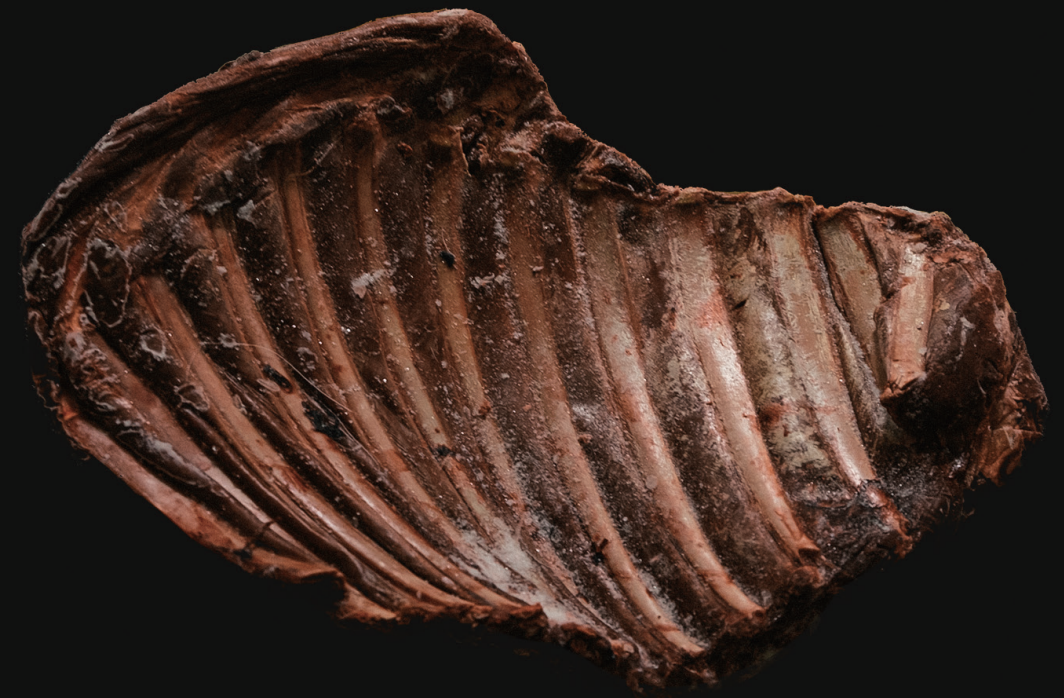
Frozen meat

rib

To store, preserve and be ready for being exported,
meat is frozen.

It used to be done outside, but freezer is a major tool nowadays.

Herding is never frozen,
which is changing always, by nature or human.



Fat

fat

This surrounded stomach.
Reindeer surrounded by nature,
sometimes, by roads.



Packed Meat

chopped meat, plastic, paper

Meat is exported to various places, not only in the North, but also to the South,
such as Oslo, London, New York etc.

Not only within pastures,
they could travel for far more,
although we can not see their face.



Packed Meat

steak, plastic

These products arrive in winter, around in January, at markets.

They do not bring Christmas gifts,
they bring us themselves,
with the taste and time, which is special.



Packed Smoked Meat

leg

Packing to keep the aroma of smoke.

CO2 is packed in the Arctic.



Smoked Heart

heart

'I like it though, do you like it?'

She was putting it on a piece of bread with butter.

Is it strange?

No. I am a stranger.



Dried Smoked Meat

back leg

Smoked with birch tips.

Smoke from nature.

Smoke in the pasture from construction.



Blood Sausages

blood sausages, boiled blood, boiled front meat, honey, lingon berry sauce, vegetable, potato

The mother pours blood in intestines and boil it.

This is a tradition of herders.

The sky drops rain to the ground and make snow icy.

This is a recent trend in the Arctic.



Hamburger

minced meat, buns, vegetables, hamburger sauce

The Arctic Hamburger.

Of course, that is warm.

The atmosphere at home make it even more warm.

It was brewing over the window.



Marrow

bone

This is called the best part of reindeer.

Not only the taste but also that rich nutrition.

The texture is soft and smooth like pudding or tofu.

So it is fragile,

same as their life.



Winter Boots

skin, yarn

The mother made this for her son.

It was around 15 years ago.

'I used this several times and also have tried snow boarding with it!'

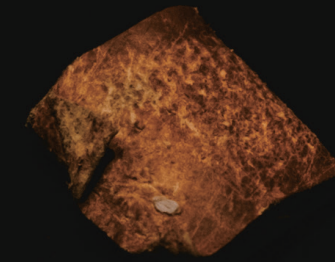
This still looks well.



Thimble

leather

It is small, but necessary, crucial.
We often discuss large things,
forgetting about something important,
which is often small.



Ribbon loom and Shuttle

antler, bone

It looks very complicated.

But, no, you can just follow this pattern instruction.

Their life is simple,

following the nature.

It is not easy though.



Winter Coat

skin, felt, yarn

It is 40 years old.

This is the father's,

he uses it only sometimes.

Although it has a moth-hole,
it is impossible to throw it away.



Knife & the Case

antler, skin, birch

This is too beautiful for work.

He was laughing.

'I also had a knife, which has an antler parts,

but it was broken.'

I have never broken a knife in my life.



Milk Cup

antler, birch

He had a one, hanging on his belt.
It had been used for drinking fresh water from the river.
Today, he has lost it and uses plastic bottle.
He hasn't lost fresh water from the river,
for now.



Lasso

rubber

Throwing this to the antler of reindeer to catch them.

You have to practice a lot.

They have been good at this,
because they grown up as herders.

'What? Other jobs? No, I never thought about that.'

Never.



Soap

fat, lye

His brother made this.

It is next to the sink.

There were reindeer wondering food behind the garden.

It was on March.

They are supposed not to be here.



Earmark

ear

Each herder has their own earmark.
That has been a way of cutting reindeer ears.
Plastic ear tags?
This is not agriculture, like cows or sheep.
It is reindeer herding.



Slaughter Hanger

wood, steel

They also slaughter reindeer by themselves.

Such a simple structure.

Here, the life is simple.

Or it used to be.



Knife & the Case

skin, yarn, birch, steel

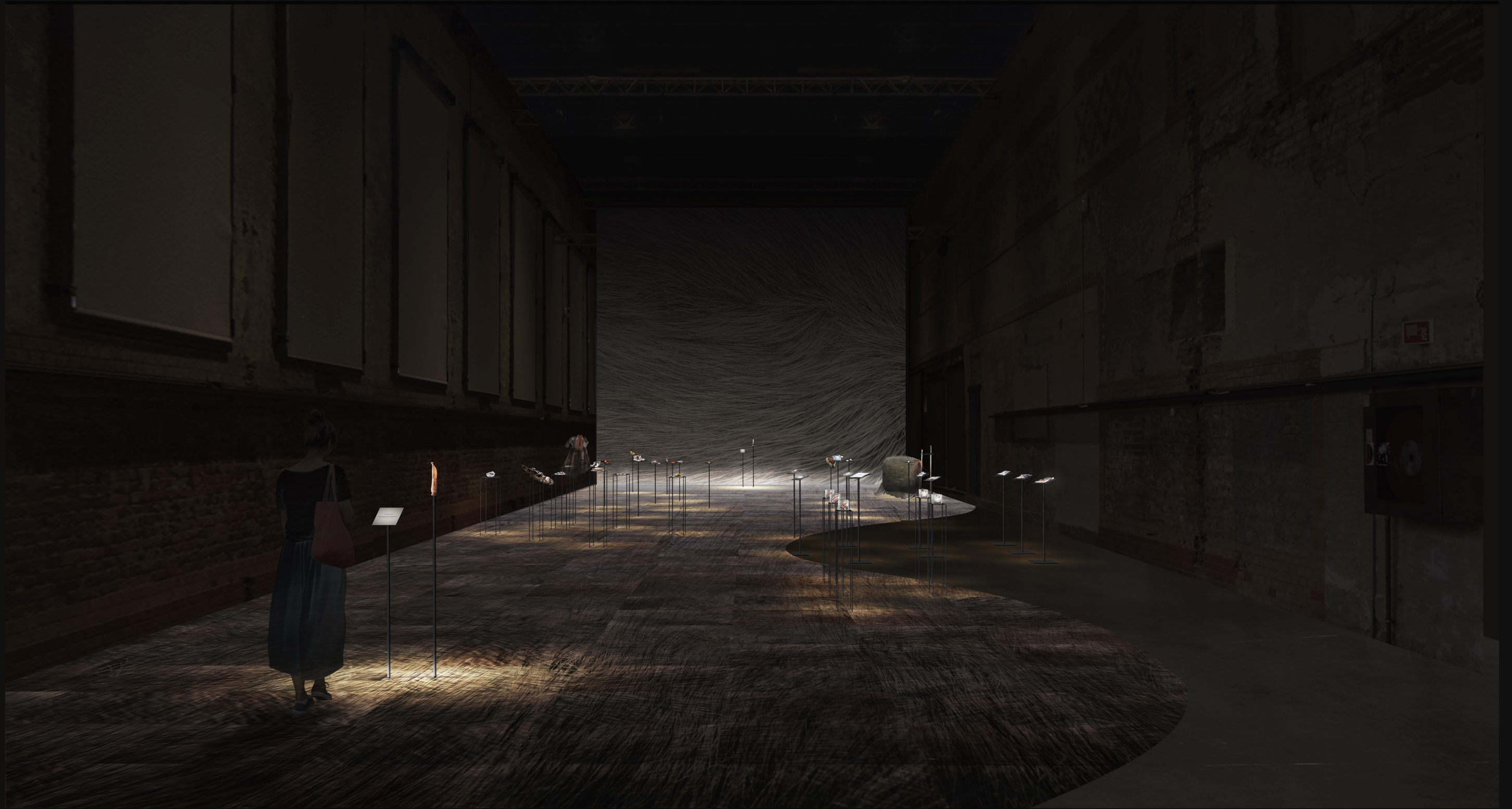
Every herder has their own knife, hanging on their belt.

Knife is still their necessity although it is not only used for slaughtering reindeer.

The use is for cutting anything
except a tie between reindeer and herders.







View of main gallery

Epilogue



Special Thanks

Supervisor:

Luis Callejas,
Peter Hemmersam

for everything:

Rein Passion (Paul Ante Smuk and Jan Ivar Smuk) and their family, The Smuks.

(for blood sausages etc.):

Jano Jusso Smuks

for meat:

Mats Kemppe and Heidi Marja Komonen,
Fenaknoken (the butcher in Oslo),

for clothes & tools:

Varanger Samiske Museum: Várjjat Sámi Musea,
Tromsø Museum

for skin:

Pokka Reindeer Hides,
Elias Andersson (WAY NOR AS),
Terje Nygård

for external supervising:

Ida-Johanna Lundqvist

and everyone else who made my project possible or encouraged me a lot.

