

REINDEER

Diploma project

2017 spring

Akie Kono

This project is about designing and building a knowledge of  
cultural landscapes by Reindeer.

## Contents

Prologue

Chapter

- Book -

Chapter

- Exhibition -

I. Museography

II. Site

III. Spatial context

IV. Design proposal

Epilogue

## Prologue

The reindeer from the north is herded by minority groups.

The reindeer from the south is best known as Rudolph.

The minority is always conquered by the majority.

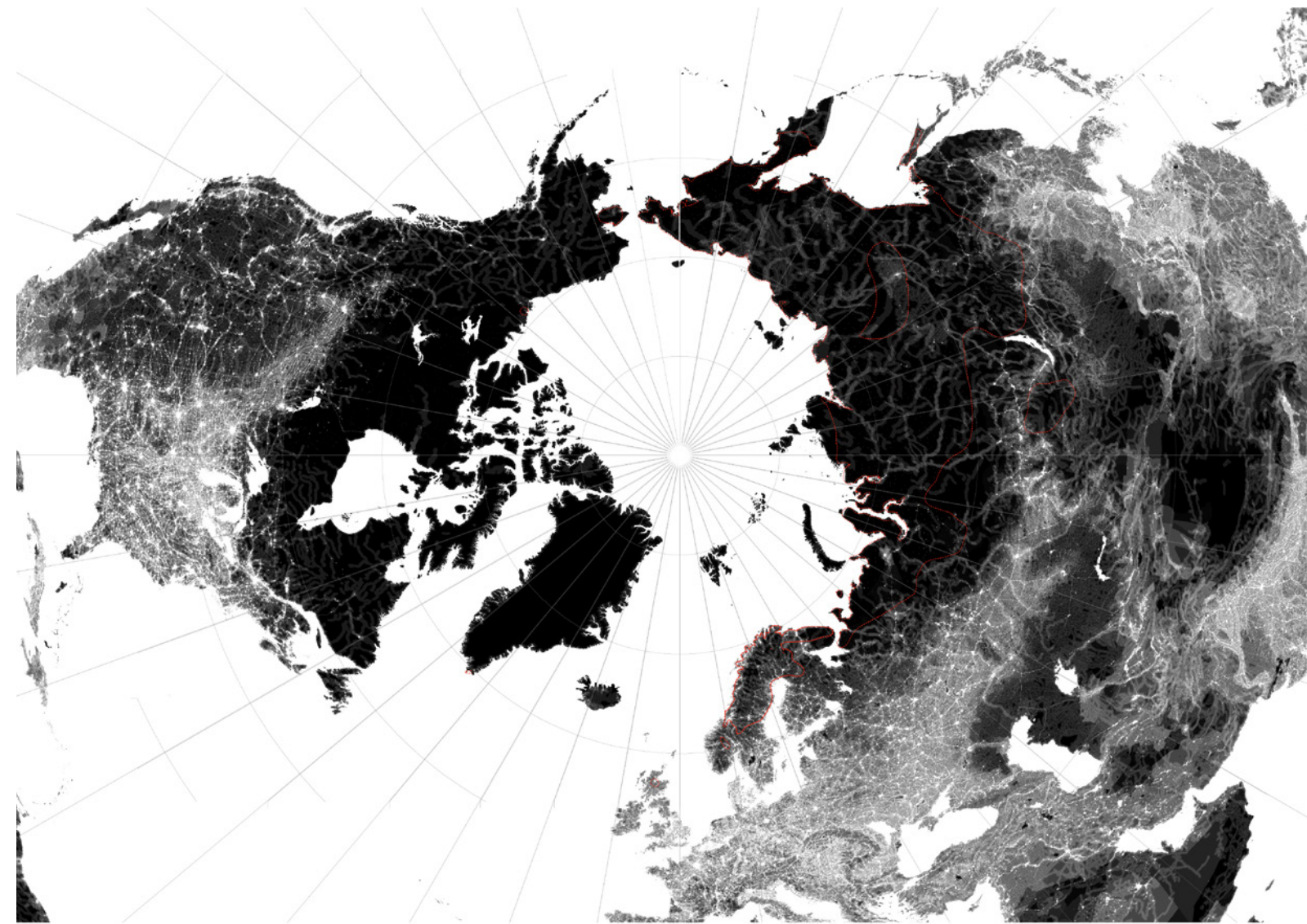
- Reindeer husbandry -



Source:  
International Centre of Reindeer husbandry, - (2009) *World Reindeer Husbandry: Peoples, Distribution and Challenges. Documentation.* International Centre for Reindeer Husbandry, Kautokkeino.

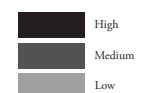
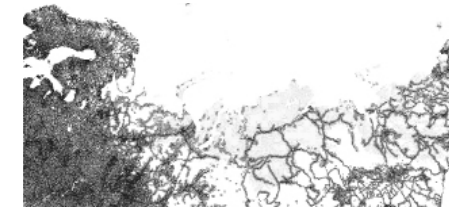
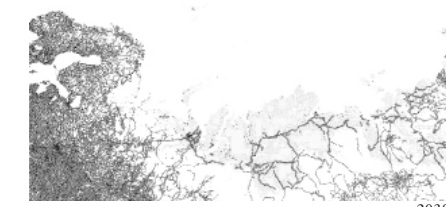
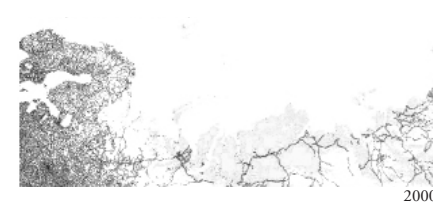
- Human Impact -

Power from the South  
is always interested in the North.



Reindeer husbandry

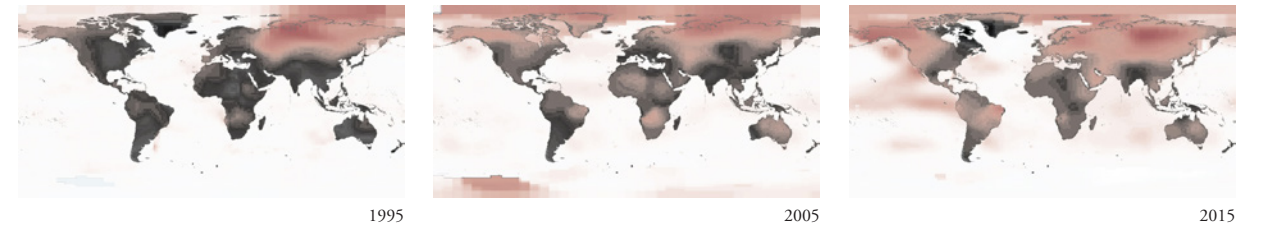
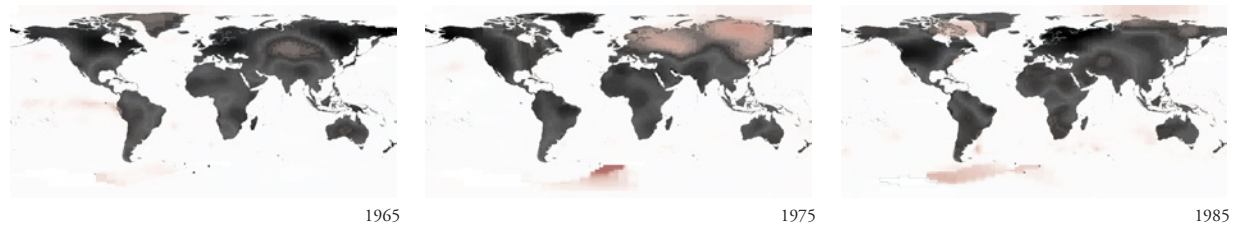
Source: Wildlife Conservation Society and Center for International Earth Science Information Network, Columbia University, (2005) *Last of the Wild Project, Version 2, 2005 (LWP-2): Global Human Influence Index (HII)*, NASA Socioeconomic Data and Applications Center (SEDAC), New York.



Source: Standing Committee of Parliamentarians of the Arctic - Tromsø meeting 2002.

- Climate Change -

The effects are extreme in the Arctic.



Source: Kevin Ward, *Global temperature anomaly (1year)*. NASA earth observations.



# ALWAYS CHAMPIONING THE TRUTH

## The reindeer herders battling an iron ore mine in Sweden

By Stuart Hughes

Stuart Hughes reports from northern Sweden. "Campaigners argue the mine will be devastating for Sami and other indigenous people in the Sami calendar. Each convalesces with a siege on the life of their reindeer."

In the mountains near the border between Sweden and Norway, at the height of the summer season the Sami call Gievss. The reindeer herders mark the reindeer calves that are just beginning to leave the hills.

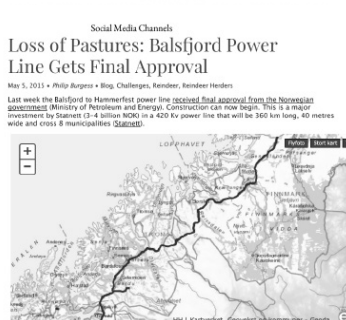
For a few short months, the sun never dips below the horizon. It is a way of life that the Sami, Europe's only indigenous people, have followed for thousands of years.

It is now one they say faces an uncertain future. A British company, Bowland Mining, has been carrying out test drilling for iron ore in the area.

**Social Media Channels**  
**Mining and Reindeer Can Mix According to Senior Politician, Norway**  
April 13, 2018 • Philip Burgess • Reindeer Herders  
A multi stakeholder seminar was held in the Kautokeino, Norway yesterday which focused on the issue of mining in Finnmark, an issue of some controversy in the region since the passing of the Finnmark Act, which devolved ownership of mining permits and rights to the region of Finnmark. The seminar was attended by the governing Labour Party Health Minister and the leader of the Sami Reindeer Herders Association of Norway. Heavyweight politicians were present, including the Norwegian Labour Party Health Minister and the leader of the mining company Store Norske AS, who have been active in stating claims, most particularly in the Kautokeino region. Reindeer was represented in the support for the future development of mining in the region, which reindeer herders fear will mean the further erosion of winter pastures that are already under duress. Reindeer said NRC Sami Radio.

**Social Media Channels**  
**Sami Reindeer Herders in Sweden Lose Out to Wind Power**  
December 1, 2018 • Philip Burgess • Blog  
Wind turbines at Månklippan near Fårö, Sweden. One of the largest wind farms in the world is being built in northern Sweden but not everyone is pleased about it. The turbines cut across an area used by Sweden's indigenous Sami reindeer herders.

**Social Media Channels**  
**Loss of Pastures: Balsfjord Power Line Gets Final Approval**  
May 3, 2018 • Philip Burgess • Blog, Challenges, Reindeer, Reindeer Herders  
Last week the Balsfjord in Finnmark received the green light approval from the Norwegian government to build the Balsfjord and Cieland. Construction will now begin. The 100 km power line will cross 13 Sami villages and a 420 kv power line that will be 340 km long, 40 meters wide and cross 8 municipalities. [SOURCE](#)



The route of the proposed power line, source: statnett.no. It will cross 10 reindeer herding districts in northern Norway and have dramatic impacts on some districts, according to herders. Herders have been vocal in their opposition to the project and have asked for a better route or that significant route alterations be undertaken, or that areas critically affected could have additional underground construction.

Acting Head of NRC, Per John Aune, believes the consequences for reindeer herding in the area will be significant. *It will particularly impact on calving country. Research shows that the reindeer avoid areas from one to four kilometers from the disturbance, particularly females with calves. This causes pressure in other areas of these regions.*

**Social Media Channels**  
**IGE Nordic Mining Plans in Åbboråså Reindeer District, Kautokeino**  
February 5, 2018 • Philip Burgess • Reindeer Herders  
IGE Nordic, the daughter company of mining giant International Gold Exploration unveiled their plan for the former gold mine of Åbboråså, 40 km west of Kautokeino. IGE Nordic visited Kautokeino, work having meetings with the municipality and reindeer herders from the Åbboråså reindeer district to discuss and the mine is to be redeveloped. In an interview with NRC Sami Radio, Frank Brink, IGE Nordic Director said,

"This is one of our three highest priority projects. They could set it up and running within months. 30 work places were spoken of, taking 20 years, extension of three times of gold available for mining. IGE were recently listed on the Oslo Stock Exchange and are active in reopening the Svalbard mines in Sweden in Zinc and Copper Ore in operations between 1970-1980, which would have negative consequences for Vilhelmina Södra / Frankrikeberg Sami communities, according to Rebecca Laurence of the Sami Council."

## Arctic interests clash over mining

The recent discovery of rare and potentially lucrative mineral veins containing copper in the mountains above the Rapparfjord in Finnmark looks set to stir up more conflicts over natural resources in Northern Norway. The mining company involved wants to dump its tailings in the fjord, and that's set off protests from the fishing industry and environmentalists.



The Rapparfjord mine along the Rapparfjord is below the mountains where Reindeer also graze on the Rapparfjord. Copper Company, has already started to back efforts to use the site for disposal of mining debris. The indigenous Sami people in the area, meanwhile, are also concerned over what 1000 large-scale mining operations would mean for the area. Reindeer herders are also concerned over what 1000 large-scale mining operations would mean for the area. Reindeer herders are also concerned over what 1000 large-scale mining operations would mean for the area.

**"God Knew What He Was Doing When He Made Norway," Industry Minister of Norway on Expanding Mining on Reindeer Pastures**  
October 4, 2018 • Philip Burgess • Blog  
Industry Minister of Norway Trine Loken told Norwegian lawmakers, the government has just announced a plan to expand mining in the country in a way that is not in line with the Sami Reindeer Herders Association of Norway. Heavyweight politicians were present, including the Norwegian Labour Party Health Minister and the leader of the mining company Store Norske AS, who have been active in stating claims, most particularly in the Kautokeino region. Reindeer was represented in the support for the future development of mining in the region, which reindeer herders fear will mean the further erosion of winter pastures that are already under duress. Reindeer said NRC Sami Radio.

**Social Media Channels**  
**It's not as simple as the industry minister said, Adressavisen. But of course for their collection system, it might be "straightforward" because they do not account for what the reindeer industry says, and that is a copy for them to get the reindeer industry to follow their terms."**  
The NR leader clearly stated that their organization is against all mining in areas used by reindeer herders.

**Social Media Channels**  
**LKAB & Swedish Government Deny Funding to Reindeer Herding Villages**  
March 27, 2018 • Philip Burgess • Reindeer Herders  
Two Sami villages in northern Sweden have been denied compensation from the state-owned mining company LKAB for the time village representatives spent on planning for the relocation of Kiruna. The Reindeer Herding Village of Cieland and Cieland First turned to the government for money to make up for time spent tending to the relocation of nearby Kiruna instead of tending to their reindeer. After the government refused the requests, they then turned to the LKAB mining company for 500,000 kroner to cover various lost due to the relocation process.

LKAB is funding the relocation of Kiruna's city centre as the company can continue operating a lucrative mine which has been underground tracks that threaten to sink the city in the coming years. Read the full story here (The Local).

**ARCTIC DEEPLY**  
An in-depth coverage of the changing Arctic, check out our new, always available, Arctic newsletter.

**Social Media Channels**  
**Sami Fight Finland's Plan to Log Ancient Forests**  
February 11, 2018 • Philip Burgess • Reindeer Herders  
The Sami people are a mining project in northern Sweden, announced by a Canadian company, threatens their traditional way of life and violates their basic human rights, as reported by the United Nations. On 11 August 2009, Boliden Minerals Inc., a Vancouver-based mining company, announced plans to begin test-drilling for minerals on pasture lands considered invaluable to the Sami people. In a press release, circulated in Canada the same date, Boliden further announced its plans to mine in the proposed area [Sami, Boliden, and the Environment](#). The Sami communities have not agreed to such test-drilling. Furthermore, Sami community members do not recognize the company's right to drill, noting that the company does not hold the relevant permits to drill and lacks a work plan, approved by the reindeer herders. "This is the heart of our land," says Maria Skum, a spokesperson for the communities. "This is where the reindeer come to eat, and where they find the richest pastures. Our herders have lived with the reindeer on these mountains since time immemorial. We are determined to pass the legacy on to the next generations. Therefore, we have no choice but to do everything we can to stop this mine. If a mine is established on the planned area, we will no longer be traditional reindeer herders. We will lose the most vital part of our identity."

**Canadian Mine Threatens Traditional Reindeer Husbandry, Sweden**  
September 11, 2009 • Philip Burgess • Reindeer Herders  
Amine in position - (Source: Boliden Minerals) (Press Release, Sami Council) The Sami people are a mining project in northern Sweden, announced by a Canadian company, threatens their traditional way of life and violates their basic human rights, as reported by the United Nations. On 11 August 2009, Boliden Minerals Inc., a Vancouver-based mining company, announced plans to begin test-drilling for minerals on pasture lands considered invaluable to the Sami people. In a press release, circulated in Canada the same date, Boliden further announced its plans to mine in the proposed area [Sami, Boliden, and the Environment](#). The Sami communities have not agreed to such test-drilling. Furthermore, Sami community members do not recognize the company's right to drill, noting that the company does not hold the relevant permits to drill and lacks a work plan, approved by the reindeer herders. "This is the heart of our land," says Maria Skum, a spokesperson for the communities. "This is where the reindeer come to eat, and where they find the richest pastures. Our herders have lived with the reindeer on these mountains since time immemorial. We are determined to pass the legacy on to the next generations. Therefore, we have no choice but to do everything we can to stop this mine. If a mine is established on the planned area, we will no longer be traditional reindeer herders. We will lose the most vital part of our identity."

**Social Media Channels**  
**"Companies and Swedish State Both Breach Sami Rights" Sami Council/SSR Press Release**  
February 21, 2018 • Philip Burgess • Reindeer Herders  
The Sami Council and the National Swedish Sami Association are in dialogue with several companies, one of which is Boliden Minerals Inc. This is a Canadian exploration company, who claim to respect the rights of indigenous people in Canada. At the same time, the company seems to have no problem with performing extensive exploration activities in sensitive Sami reindeer herding areas in Swedish nature reserves," says Maria Åhrén, Head of Human Rights at the Sami Council. The Sami Council and the National Swedish Sami Association (SSR) are demanding that companies and the Swedish state both take responsibility to ensure that Sami rights are protected before development projects - such as mining and oil/gas - go ahead.

**NEW FINNISH FORESTRY ACT COULD MEAN THE END OF SAMI REINDEER HERDING**  
SAMI REPRESENTATIVES CALL FOR SWIFT SUPPORT FROM THE INTERNATIONAL COMMUNITY  
by Hannibal Rhoades (https://intercontinentalcry.org/author/h-rhoades/) and Tero Mustonen (https://intercontinentalcry.org/author/teromustonen/) March 28, 2016

**Social Media Channels**  
**Full Frontal Attack on Reindeer Husbandry (NRK Norway)**  
May 29, 2018 • Philip Burgess • Blog  
A map showing extent of one claim in Kautokeino - Reiga Mining at a public meeting in Kautokeino, Norway, a full frontal attack on reindeer husbandry was launched by one of the parliamentary representatives for Finnmark, Ole Christian Ballin. The meeting had been called to discuss the issue of mining in the region where the international mining company Reiga Mining has applied for permission to expand existing mining, with the support of the local mayor and the majority of participants. Reiga Mining owns 10% of Reiga AS which has the permit to mine what is believed to be Norway's largest copper deposit at Neuvor and Reiga. Ballin criticized reindeer husbandry for being outdated, not meeting with the times and wanting to see the way of development. The city has also been relieved. Ballin's comments gained a lot of media exposure. The head of the Sami Reindeer Herders Association of Norway, NRC, Mr. Henrik Sara was shocked and alarmed at Ballin's comments, especially as he is sitting in the national parliament. Reindeer herder Mikael Nils A. Sara stressed that reindeer herders were not against development... *We have already lost areas. We are here every summer, and about 100 people are involved. One third of people have already left reindeer husbandry. Cabin building for example, has meant that we have to give away areas. We believe that we can co-exist with mining but it needs to be fair and we have to look at the consequences of encroachment. We want to have a future in reindeer husbandry.*

**Social Media Channels**  
**Sweden: 1 in 3 Young Reindeer Herders Consider Suicide**  
March 21, 2018 • Philip Burgess • Blog, Challenges, Reindeer  
Many might consider reindeer herding to be some kind of idyllic life. But it has its darker side. Anxiety, depression and the struggle for land are ending the powers and vitality of young herders, and this appears to be particularly the case in Sweden at the present time, though undoubtedly it is known that this is a challenge for young people across the world of reindeer husbandry in Sweden. 1 in 3 young herders (18-29) have considered suicide. *Three excellent articles in NRK Norway by 1st reporter Sondre this last week on this difficult topic. The first is an interview with Per Erik Sara, a Sami psychiatrist who works at SAMO (Sami) mental health center in Kautokeino - psykisk helsevern (ps) i Sápmi, based in Kautokeino. SAMO is now the only institution in the Nordic countries that has expertise in culturally adapted suicide prevention among Sami, including culturally and linguistically adapted clinical psychiatry. Sondre states in the article: "It is a complex reason for suicide". Reindeer herding is a confrontational environment on many different levels. Everyday is very tough with the struggle for land. Constantly one has to fight in order to operate a profitable pasturals. The range is huge and very complex, ranging from external to internal conflicts and family problems, which can lead to the youth gets tough in everyday life. Many feel their situation as heavy, they cannot master their duties.*

**NATIONAL GEOGRAPHIC**  
**Dodging Wind Farms and Bullets in the Arctic**  
An Norway looks north for resources and energy, Sami reindeer herders fear for their lands and culture.

Harding reindeer plays an important role in the Sami culture's income and diet. "I fear the government is taking more and more of our land," says herder David Oskal. "I'm afraid that in the future, there will be no more land for the reindeer."

**ARCTIC DEEPLY**  
An in-depth coverage of the changing Arctic, check out our new, always available, Arctic newsletter.

**Social Media Channels**  
**Debate on Mining in Finnmark Heats Up**  
May 4, 2018 • Philip Burgess • Reindeer Herders  
Map shows the mining claims in Kautokeino, an area important to migratory reindeer husbandry in Northern Norway, source: NRC. According to an article in The Local, one of the largest networks in Norway, Finnmark is sitting on a potential treasure trove of over 1 billion tonnes of valuable minerals and including copper, gold, iron ore and valuable natural stones. Reiga Pedersen, deputy leader of the governing Labour Party was quoted as saying, *We are for mineral exploration in Finnmark. But it's not that we can say all, overviews and at any price. We must also develop this industry and take account of the environment and to those of the citizens before mining.* Here she is of course referring to the indigenous Sami, many of whom (especially reindeer herders) have been critical of the current gold rush for minerals that is occurring in Finnmark. Surprisingly perhaps, Pedersen herself is of Sami ancestry and she has been a vigorous supporter of developing mining in the county. Legal researcher, Øyvind Storme is quoted as saying, *A charge should be introduced which would provide direct compensation to the indigenous Sami people if they are to accept such activities in their core areas* Rana pointed to the activities of some mining ventures in Canada where First Nations are compensated for mining activity on their land. Pedersen is quoted as saying, *It is not our job to compensate for mining for the Sami, which would be very unpopular among many Norwegian communities.* Meanwhile, in the regional media, the County Mayor of Finnmark is quoted as saying that people are

**Social Media Channels**  
**"Companies and Swedish State Both Breach Sami Rights" Sami Council/SSR Press Release**  
February 21, 2018 • Philip Burgess • Reindeer Herders  
The Sami Council and the National Swedish Sami Association are in dialogue with several companies, one of which is Boliden Minerals Inc. This is a Canadian exploration company, who claim to respect the rights of indigenous people in Canada. At the same time, the company seems to have no problem with performing extensive exploration activities in sensitive Sami reindeer herding areas in Swedish nature reserves," says Maria Åhrén, Head of Human Rights at the Sami Council. The Sami Council and the National Swedish Sami Association (SSR) are demanding that companies and the Swedish state both take responsibility to ensure that Sami rights are protected before development projects - such as mining and oil/gas - go ahead.

**Social Media Channels**  
**Mining threatens to eat up northern Europe's last wilderness**  
Next network of rivers, lakes and ecosystems in Finland, Sweden and Norway at risk from being exploited for coal and oil extraction.  
John Vidal  
June 19, 2010  
Great stretches of Europe's last wilderness risk being damaged and polluted as the international mining industry gears up to develop northern Finland, Sweden, and Norway in search of uranium, iron ore, nickel, phosphorus, and valuable rare earth minerals, according to environmentalists.  
The prize for Britain, Australia, Canada and other companies is billion-dollar mega mines in Lapland, a region which covers all three countries and Russia, able to supply burgeoning industry in Asia.

- Social/ Political Issues -  
Conflicts between the North and South would never end.

What a modernization has brought is, obviously,

invasion into the pasture area.

Maps can define the problematics, that is from a perspective by the power in the south.

Fundamental problem is the southern mind which do not understand

what the reality of reindeer is,

as a cultural landscapes.

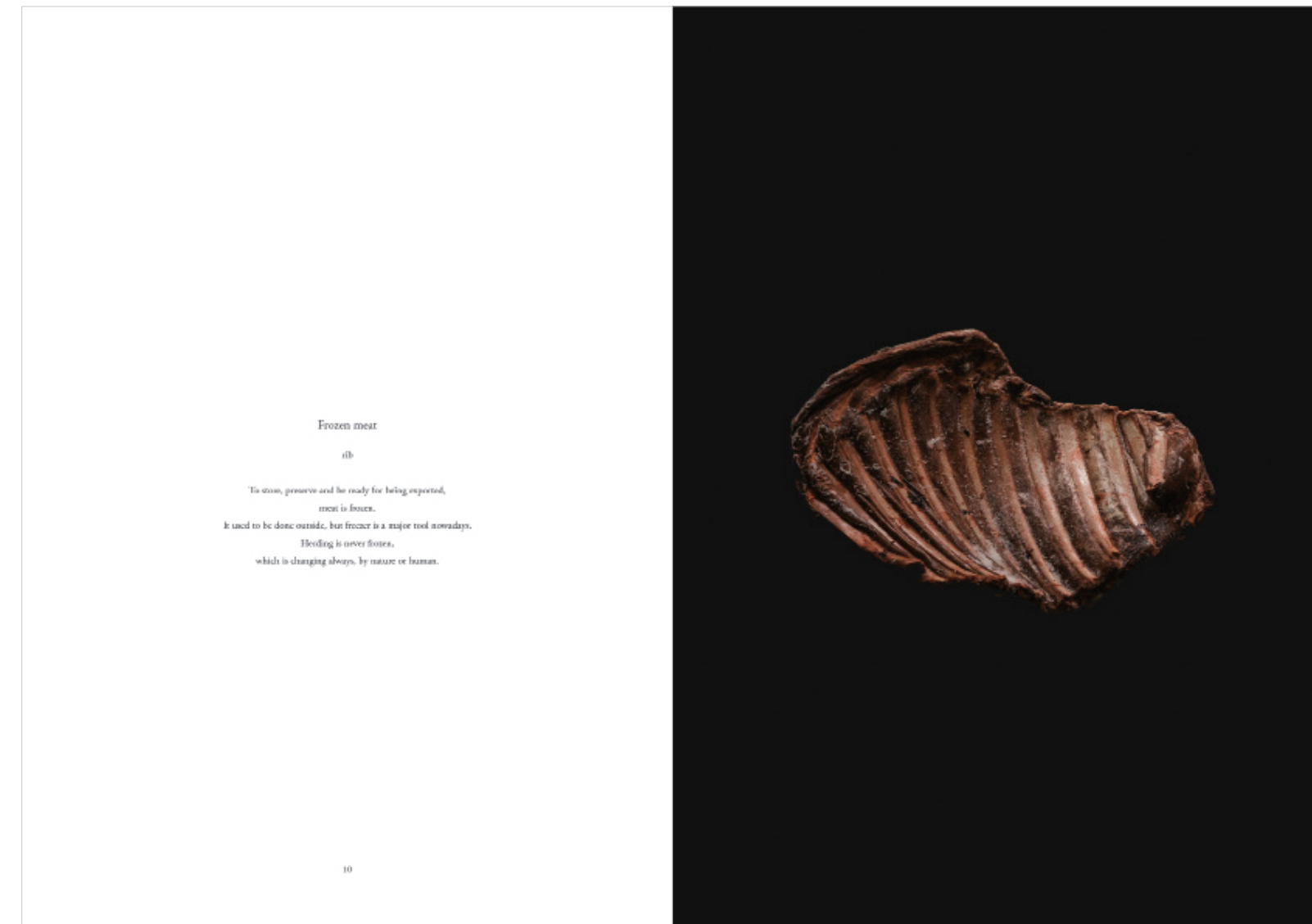


Chapter I

- Book -



The words are designed  
for generating new perspectives  
for the value for both local and global,  
and vulnerability for modernization.



The book, 'REINDEER' is a separate volume.

## Chapter II

- Exhibition -

Unlearn the common perception of a reindeer  
and you are one step closer to understand their deeper nature.

Not as Rudolph,  
but as Cultural Landscapes.

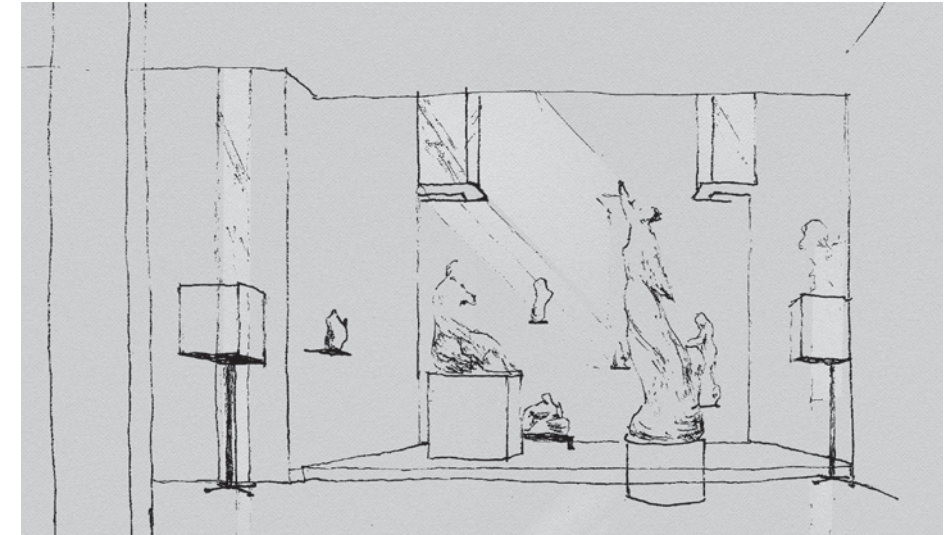
## I. Museography

Encyclopedic



focusing objects itself  
e.g. The British Museum

Scenographic



Objects for a space  
e.g. Canova Museum (by Carlo Scarpa)



Landscape exhibition

Reflect geographical information/ landscape feature into the gallery space?



Olaf Eliasson, 'Riverbed',

at the Louisiana museum of modern art, Humlebæk, Denmark

Image source: <https://www.inexhibit.com/wp-content/uploads/2014/11/Olafur-Eliasson-Riverbed-exhibition-Louisiana-museum-of-art-06.jpg> [Accessed: 7. Apr. 2017]

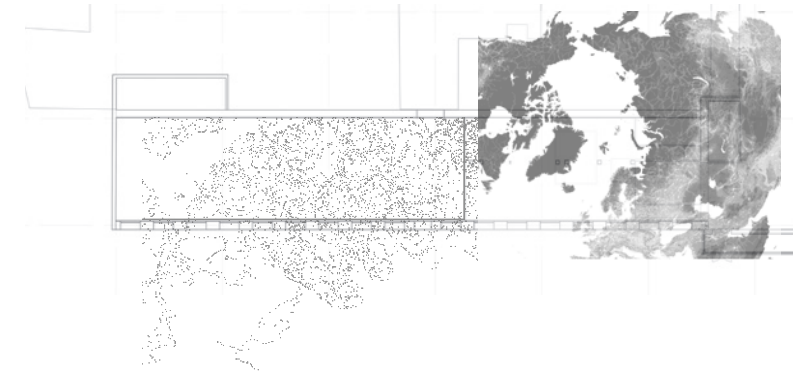


Maya Lin, 'systematic landscapes',

at Henry Art Gallery, Seattle, Washington, USA

Image source: <https://cmuarch2013.wordpress.com/2009/06/14/maya-lin-and-systematic-landscapes/> [Accessed: 9. Apr. 2017]

First image for the gallery space  
Reflecting the map and creating landscape feature, mountains



Landscape exhibition 'Reindeer'

Object are landscape itself  
as it tell about cultural landscape.



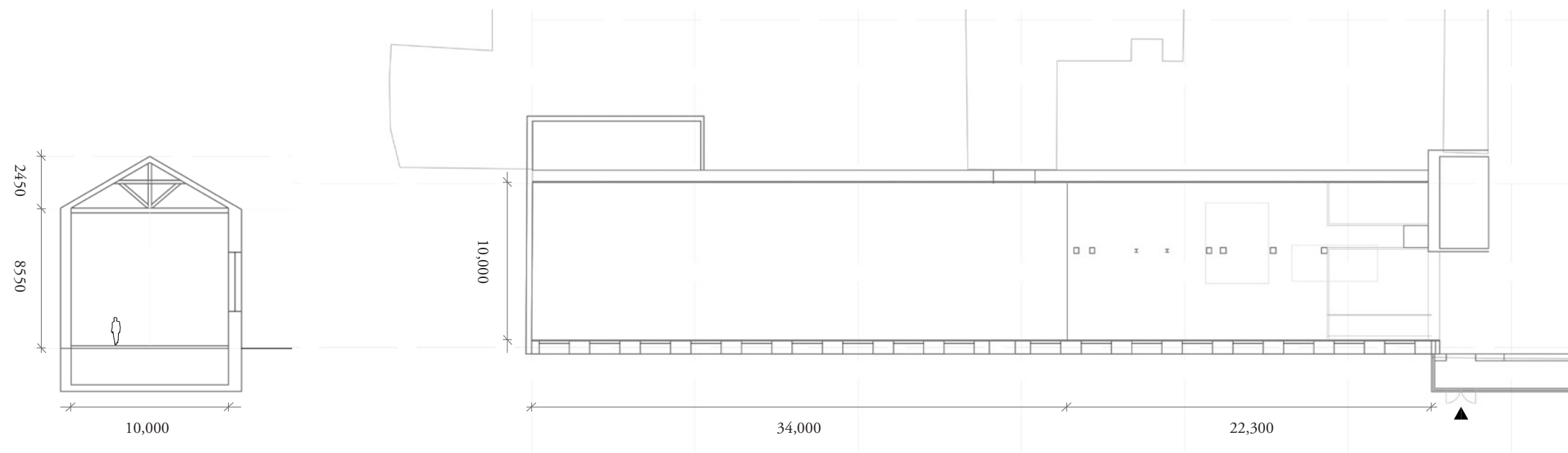
Landscape exhibition 'Reindeer'

Focusing on objects.  
Feeling the space as a landscape.

## II. Site

DogA (The Norwegian Design and Architecture centre), Oslo

Exhibition area: 34m x 10m, Height: 8.5m



### III. Spacial Context

- Introduction -

From geographical sense at outside to object-driven sense inside,  
thus, from general knowledge to a new perspective.





- Contents -  
 Starting with the knife and ending with the knife,  
 which are important.



Knife & the Case

skin, yarn, birch, steel

They order this kind of knife to local craftsman.

So it is from Scandinavia, even the blade.

He opened plastic cover of hay

by his knife.

Knife & the Case

skin, yarn, birch, steel

Every herder has their own knife, hanging on their belt.

Knife is still their necessity although it is not only used for slaughtering reindeer.

The use is for cutting anything  
except a tie between reindeer and herders.



- Skin -



1. Texture  
Soft texture would express the pasture territory.  
Like a ground which reindeer walk on everyday,  
but we do not.



2. Colour

Colour of skins are varied.  
It is not scientifically explained.  
But the fact is exist.



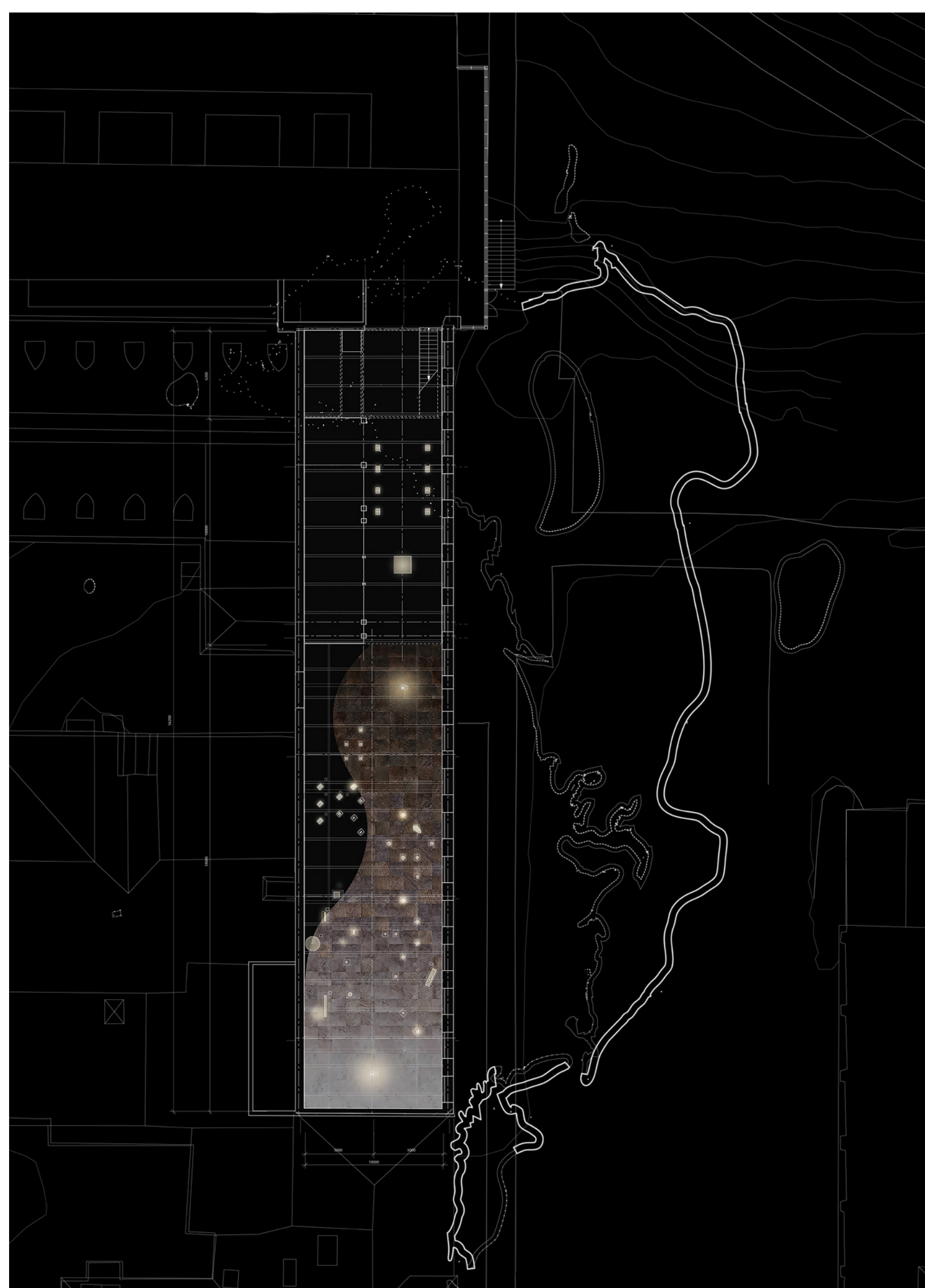
Colour re-composition  
Parts of skins could create new pattern,  
that support the exhibition space  
from darkness to light.





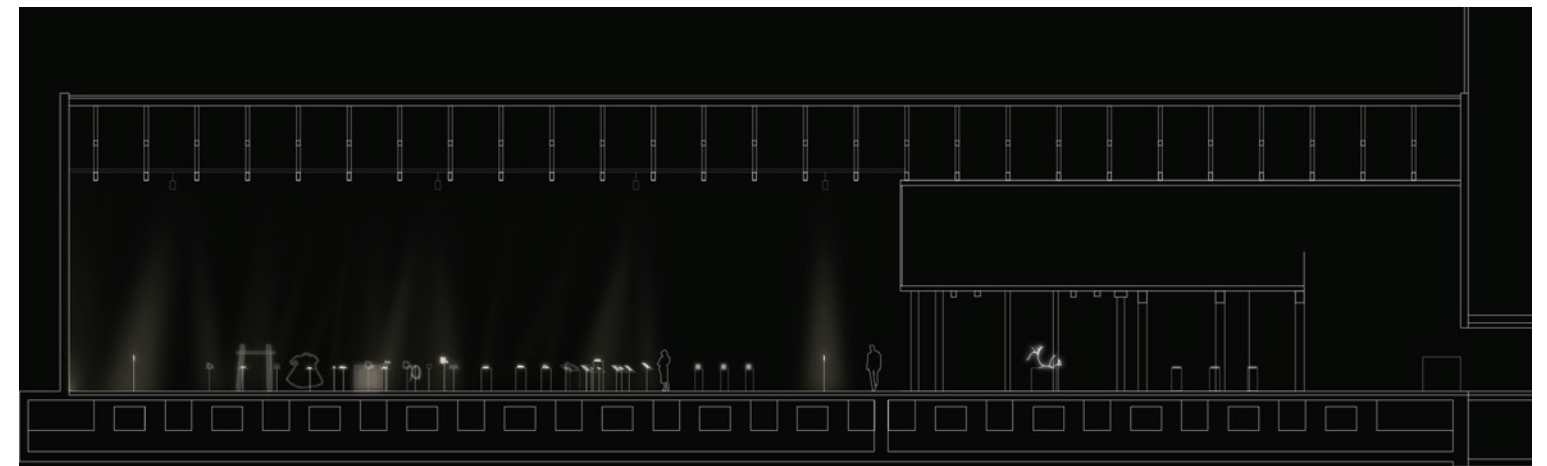
#### IV. Design proposal

- Main gallery -  
Plan 1:300

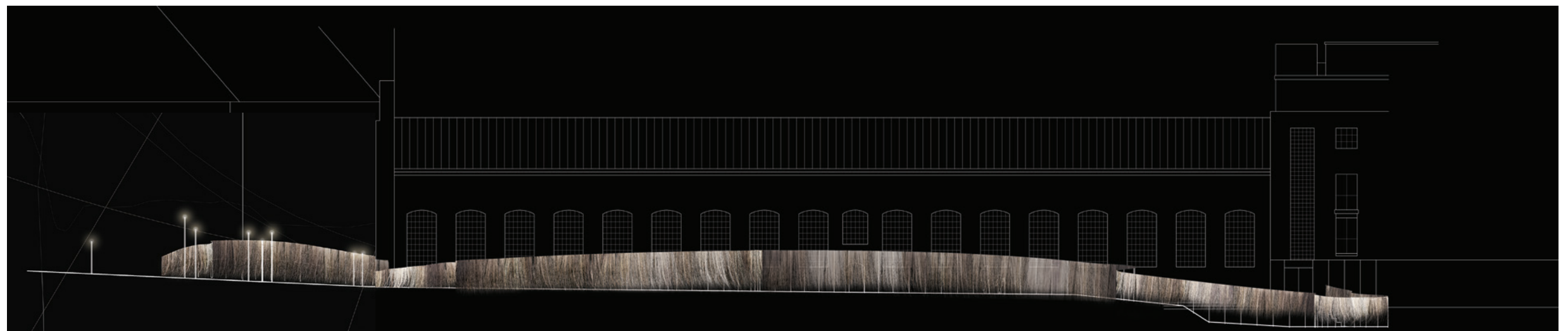




Section & Elevation



Section 1:300



Elevation 1:300



View of main gallery

## Epilogue

The reindeer from the north come to the south.

The reindeer from the south go to the north.

Mind territory could beyond geography today.

I hope Reindeer would be there forever with the cultural life.



