

REINDEER

Diploma project

2017 spring

Akie Kono

This project is about designing and building a knowledge of  
cultural landscapes by Reindeer.

## Contents

Prologue

Chapter

- Book -

Chapter

- Exhibition -

I. Museography

II. Site

III. Spatial context

IV. Design proposal

Epilogue

## Prologue

The reindeer from the north is herded by minority groups.

The reindeer from the south is best known as Rudolph.

The minority is always conquered by the majority.

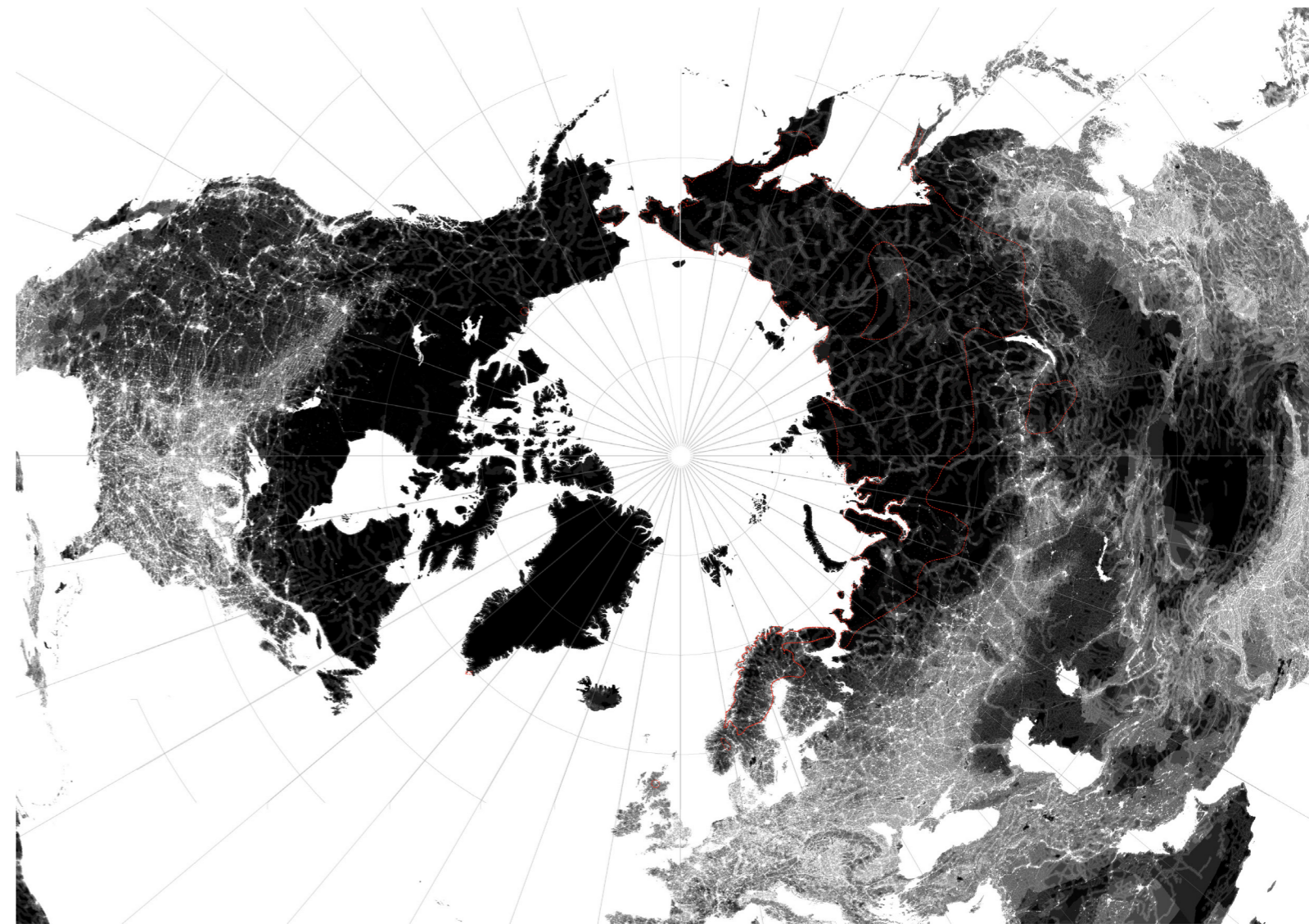
- Reindeer husbandry -



Source:  
International Centre of Reindeer husbandry, - (2009) *World Reindeer Husbandry: Peoples, Distribution and Challenges. Documentation*. International Centre for Reindeer Husbandry, Kautokkeino.

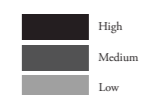
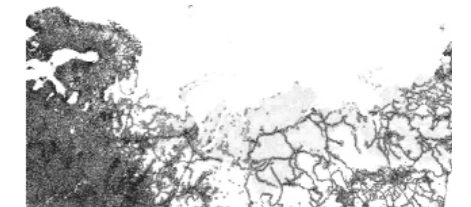
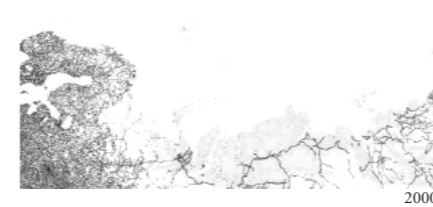
- Human Impact -

Power from the South  
is always interested in the North.



Reindeer husbandry

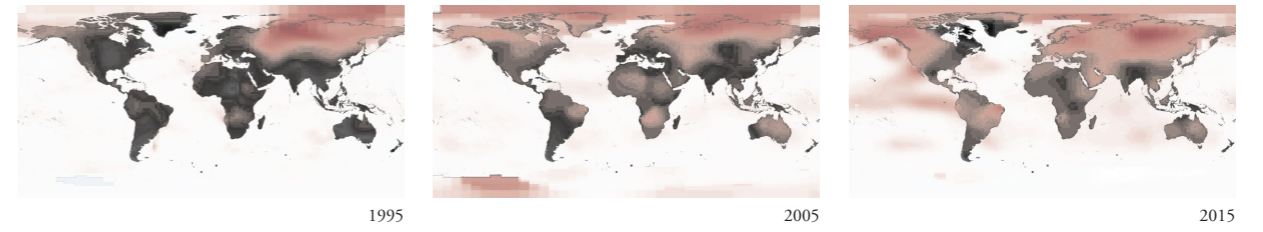
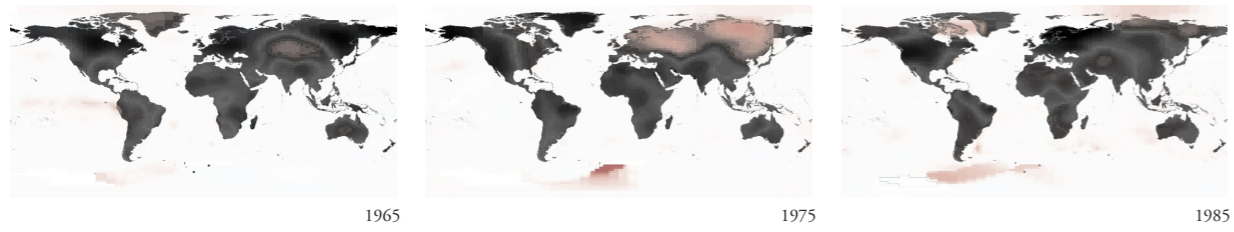
Source: Wildlife Conservation Society and Center for International Earth Science Information Network, Columbia University, (2005) *Last of the Wild Project, Version 2, 2005 (LWP-2): Global Human Influence Index (HII)*, NASA Socioeconomic Data and Applications Center (SEDAC), New York.



Source: Standing Committee of Parliamentarians of the Arctic - Tromsø meeting 2002.

- Climate Change -

The effects are extreme in the Arctic.



Source: Kevin Ward, *Global temperature anomaly (1year)*. NASA earth observations.

## ALWAYS CHAMPIONING THE TRUTH

### The reindeer herders battling an iron ore mine in Sweden

Shant Hughes reports from northern Sweden. "Campaigners argue the mine will be devastating for the reindeer herders in the Sami calendar. Each coincide with a stage in the life of their reindeer."

In the mountains near the border between Sweden and Norway, at the height of the summer season the Sami call Gievss, the reindeer herders mark the newborn calves that are just beginning to roam the hills.

For a few short months, the sun never dips below the horizon. It is a way of life that the Sami, Europe's only indigenous people, have followed for thousands of years.

It is now one they say faces an uncertain future. A British company, Bowmont Mining, has been carrying out test drilling for iron ore in the area.

### Mining and Reindeer Can Mix According to Senior Politician, Norway

A multi stakeholder seminar was held in the Kaitumkeino, Norway yesterday which focussed on the issue of mining in Finnmark, an issue of some controversy in the region since the passing of the Finnmark Act, which devolved decision making powers and ultimate resource control to the region of Finnmark. At the seminar the members of the government Labour Party (Høyre), including the leader of the Sami Reindeer Herders Association of Norway, heavyweight politicians were present, including the Norwegian Minister for the government Labour Party Health Minister and the leader of the mining company Store Norske CuU, who have been active in stating claims. Most particularly in the Kaitumkeino region. Reindeer was mentioned in the support for the new development of mining in the region, which reindeer herders fear will mean the further erosion of winter pastures that are already under duress. Politician said NRC Sami Radio.

Both Finnmark society and the Sami community is entirely dependent on new activities. If one is to preserve the culture and language we are going to have to have new jobs for the youth in the Sami villages. You can not save the Sami culture simply by having Sami kindergarten at Tyttan in Finn and reindeer in combination with a life time to live in reindeer land.

### Sami Reindeer Herders in Sweden Lose Out to Wind Power

One of the largest wind farms in the world is being built in northern Sweden but reindeer is placed about 4. The turbines cut across an area used by Sweden's indigenous Sami reindeer herders.

### Loss of Pastures: Balsfjord Power Line Gets Final Approval

Last week the Balsfjord in Hammerfest power line received final approval from the Norwegian government. The line is a 420 Km power line that will be 340 Km long, 40 meters wide and cross 19 municipalities (SAMEDI).



The route of the Balsfjord power line. Source: statnett.no

It will cross 39 reindeer herding districts in northern Norway and have dramatic impacts on some districts, according to herders. Herders have been confident in their opposition to the project and have asked for a better solution or that significant route alterations be undertaken, or that areas critically affected could have alternative underground construction.

Acting Head of NRC, Per John Amel, believes the consequences for reindeer herding in the area will be disastrous.

It will particularly impact on calving country. Research shows that the reindeer avoid areas from one to four kilometers from the disturbance, particularly females with calves. This causes pressure in other areas of these regions.

### Sami reindeer herders battle conservationists and miners to cling on to Arctic culture

Long winters in SAC temperates they can handle, but now Norway's indigenous people are fighting to protect ancient reindeer grazing land from development.

### IGE Nordic Mining Plans in Abborråska Reindeer District, Kautokeino

ICE Nordic, the daughter company of mining giant International Gold Exploration unveiled their plan for the former gold mine of Abborråska, 40 km west of Kautokeino. ICE Nordic visited Kautokeino week long meetings with the municipality and reindeer herders from the Abborråska reindeer district to release and the mine is to be redeveloped. In an interview with NRC Sami Radio, Frode Bratt, ICE Nordic Director said,

"This is the heart of our land," says Maria Skum, a spokesperson for the communities. "This is where the reindeer come to eat, and where they find the richest pastures. Our herders have lived with the reindeer on these mountains since time immemorial. We are determined to pass the legacy on to the next generations. Therefore, we have no choice but to do everything we can to stop this mine. If a mine is established on the planned area, we will no longer be traditional reindeer herders. We will lose the most vital part of our identity."

## Arctic interests clash over mining

The recent discovery of rare and potentially lucrative mineral veins containing copper in the mountains above the Repparfjord in Finnmark looks set to stir up more conflicts over natural resources in Northern Norway. The mining company involved wants to dump its tailings in the fjord, and that's not of prospects from the fishing industry and environmentalists.



The fjord is dubbed as 'Pengelind' (Golden) by its fishermen. Tens of thousands of fish are brought here to be stored in the fjord. The fisherman industry is one of the main pillars of the local economy. The fjord is also used for recreation and tourism. The discovery of copper veins is seen as a threat to the fishing industry and the environment.

### "God Knew What He Was Doing When He Made Norway," Industry Minister of Norway on Expanding Mining on Reindeer Pastures

The Norwegian Government Minister of Industry, Lars Løkke Rasmussen, has made a statement during a cabinet meeting on the issue of mining on reindeer pastures. He stated that the government's decision to allow mining in these areas was a necessary one for the economic development of the region. He also stated that the government would take measures to ensure that the reindeer herding industry was not negatively affected by the mining activities.

It's not as simple as the industry minister said. Advertisements. But of course for their collection system, it might be "strange" because they do not account for what the reindeer industry says, and that is to say for them to get the reindeer industry to follow their terms."

The NR herder clearly stated that their organization is against all mining in areas used by reindeer herders.

### KLAB & Swedish Government Deny Funding to Reindeer Herding Villages

Two Sami villages in northern Sweden have been denied compensation from the state-owned mining company KLAB for the time village representatives spent on planning for the relocation of Kivaa. The village representatives of Kivaa and Låssa had been given the go-ahead to make up for some spent funding for the relocation of nearby Kivaa instead of funding to their reindeer. After the government refused the requests, the three turned to the KLAB mining company for 500,000 kroner to cover various lost due to the construction projects.

KLAB is funding the relocation of Kivaa's city centre as the company can continue operating a lucrative mine which has created underground cracks that threaten to sink the city in the coming years.

### ARCTIC DEEPLY

Executive Summary: Arctic is a vast region, but not all of it is the same. It is a mosaic of different ecosystems, and each with its own challenges. The Arctic is a region of immense natural resources, but it is also a region of immense vulnerability.

## Saami Fight Finland's Plan to Log Ancient Forests

TAKE PART: Finland's parliament is considering a bill that could give logging, lakebed gravel mining and tourist fishing priority over the preservation of some of Europe's last intact boreal forests – and the endangered species and reindeer herders that rely on them.

### Canadian Mine Threatens Traditional Reindeer Husbandry, Sweden

Canada's mining industry has a long history of environmental damage and has been a major threat to the traditional reindeer husbandry in Sweden. The mining industry has been expanding into new areas, and this has led to a significant loss of reindeer pastures. The Swedish government has been unable to protect these pastures from the mining industry, and this has led to a significant decline in the reindeer herding industry.

FINLAND (https://intercontinentalcry.org/news/europe/finland) / SAAMI (https://intercontinentalcry.org/indigenous-peoples/saami) / ARCTIC DEEPLY (https://intercontinentalcry.org/)

Sign up for our newsletter to receive weekly updates on the latest news from the Arctic region. You can also sign up for our monthly newsletter.

Sign up for our newsletter to receive weekly updates on the latest news from the Arctic region. You can also sign up for our monthly newsletter.

### Full Frontal Attack on Reindeer Husbandry (NRK Norway)

The discovery of copper veins in the mountains above the Repparfjord in Finnmark looks set to stir up more conflicts over natural resources in Northern Norway. The mining company involved wants to dump its tailings in the fjord, and that's not of prospects from the fishing industry and environmentalists.

### Sweden: 1 in 3 Young Reindeer Herders Consider Suicide

Swedish reindeer herders are facing a mental health crisis, with one in three young herders considering suicide. The crisis is linked to the loss of traditional reindeer pastures and the impact of climate change on the reindeer herding industry.

### Dodging Wind Farms and Bullets in the Arctic

As Norway looks north for resources and energy, Sami reindeer herders fear for their lands and culture.

### Sami Fight Finland's Plan to Log Ancient Forests

TAKE PART: Finland's parliament is considering a bill that could give logging, lakebed gravel mining and tourist fishing priority over the preservation of some of Europe's last intact boreal forests – and the endangered species and reindeer herders that rely on them.

### Canadian Mine Threatens Traditional Reindeer Husbandry, Sweden

Canada's mining industry has a long history of environmental damage and has been a major threat to the traditional reindeer husbandry in Sweden. The mining industry has been expanding into new areas, and this has led to a significant loss of reindeer pastures. The Swedish government has been unable to protect these pastures from the mining industry, and this has led to a significant decline in the reindeer herding industry.

FINLAND (https://intercontinentalcry.org/news/europe/finland) / SAAMI (https://intercontinentalcry.org/indigenous-peoples/saami) / ARCTIC DEEPLY (https://intercontinentalcry.org/)

Sign up for our newsletter to receive weekly updates on the latest news from the Arctic region. You can also sign up for our monthly newsletter.

Sign up for our newsletter to receive weekly updates on the latest news from the Arctic region. You can also sign up for our monthly newsletter.

### Platinum Drilling Starts near Lovozero, Kola Peninsula

Platinum drilling has started on the Lovozero Peninsula near the border between Russia and Finland. The drilling is being conducted by a Russian company, and it is expected to uncover significant reserves of platinum and other rare metals.

### Sweden: 1 in 3 Young Reindeer Herders Consider Suicide

Swedish reindeer herders are facing a mental health crisis, with one in three young herders considering suicide. The crisis is linked to the loss of traditional reindeer pastures and the impact of climate change on the reindeer herding industry.

### Dodging Wind Farms and Bullets in the Arctic

As Norway looks north for resources and energy, Sami reindeer herders fear for their lands and culture.

### Sami Fight Finland's Plan to Log Ancient Forests

TAKE PART: Finland's parliament is considering a bill that could give logging, lakebed gravel mining and tourist fishing priority over the preservation of some of Europe's last intact boreal forests – and the endangered species and reindeer herders that rely on them.

### Canadian Mine Threatens Traditional Reindeer Husbandry, Sweden

Canada's mining industry has a long history of environmental damage and has been a major threat to the traditional reindeer husbandry in Sweden. The mining industry has been expanding into new areas, and this has led to a significant loss of reindeer pastures. The Swedish government has been unable to protect these pastures from the mining industry, and this has led to a significant decline in the reindeer herding industry.

- Social/ Political Issues -  
Conflicts between the North and South would never end.

Never miss an update.

Sign up for our newsletter to receive weekly updates on the latest news from the Arctic region. You can also sign up for our monthly newsletter.

Sign up for our newsletter to receive weekly updates on the latest news from the Arctic region. You can also sign up for our monthly newsletter.

## Saami Reindeer Herders Fight Wind Farm Project

Europe's largest onshore wind farm is being built in central Norway. But the project, which will more than double Norway's wind capacity, lies in the middle of an important reindeer grazing area, leaving Sami herders worried about the impact it might have on their livelihood and traditions.

## guardian

### Mining threatens to eat up northern Europe's last wilderness

Large stretches of Europe's last wilderness risk being damaged and polluted as the international mining industry gears up to develop northern Finland, Sweden, and Norway in search of uranium, iron, nickel, phosphorus, and valuable rare earth minerals, according to environmentalists.

What a modernization has brought is, obviously,

invasion into the pasture area.

Maps can define the problematics, that is from a perspective by the power in the south.

Fundamental problem is the southern mind which do not understand

what the reality of reindeer is,

as a cultural landscapes.



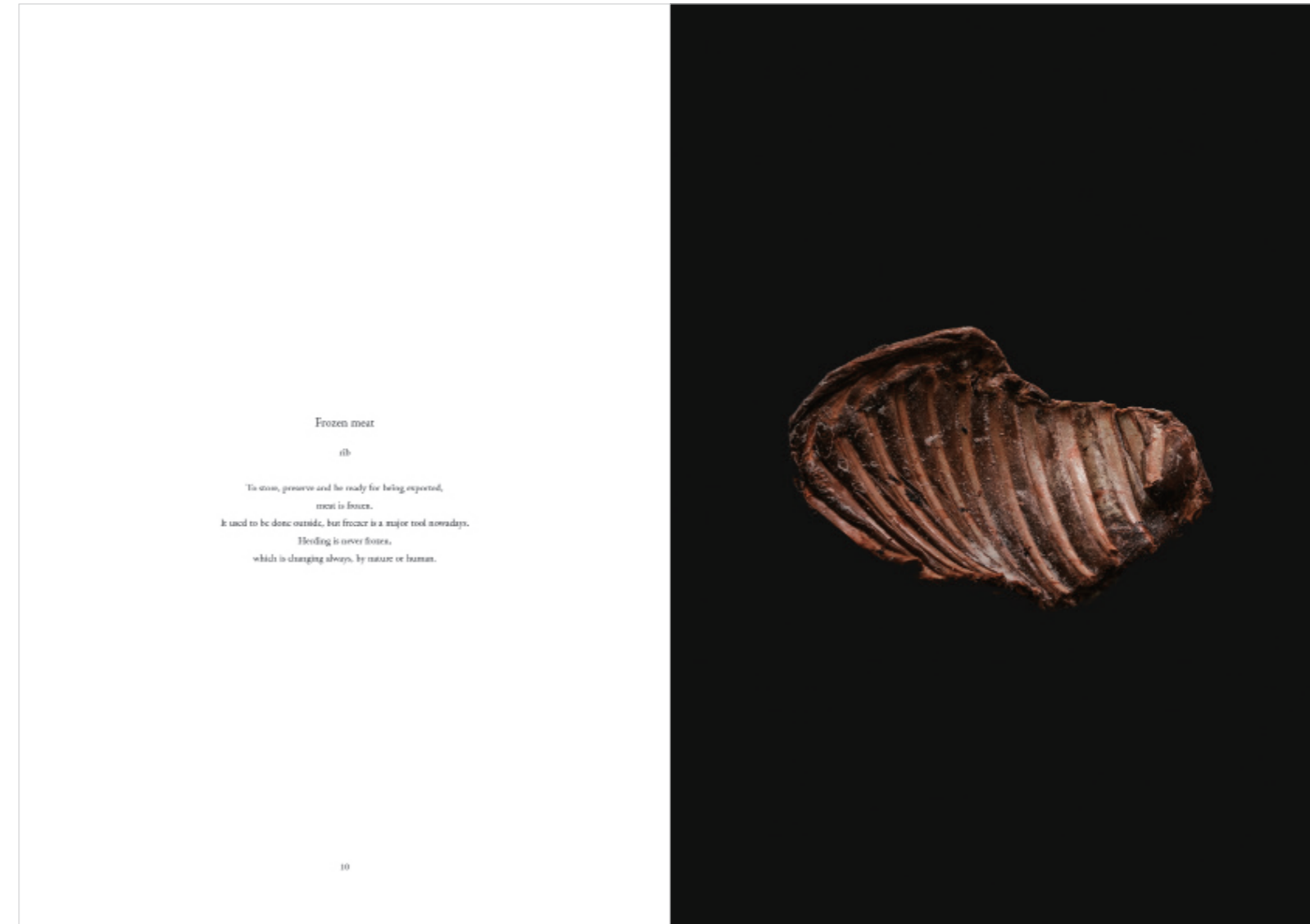
Chapter I

- Book -

Collection of products made from reindeer or relate to herding activity.  
The research is a journey  
through staying with Sami reindeer herders,  
visiting friends in Tromsø  
and supermarket or butcher in Oslo.



The words are designed  
for generating new perspectives  
for the value for both local and global,  
and vulnerability for modernization.



The book, 'REINDEER' is a separate volume.

## Chapter II

- Exhibition -

Unlearn the common perception of a reindeer  
and you are one step closer to understand their deeper nature.

Not as Rudolph,  
but as Cultural Landscapes.

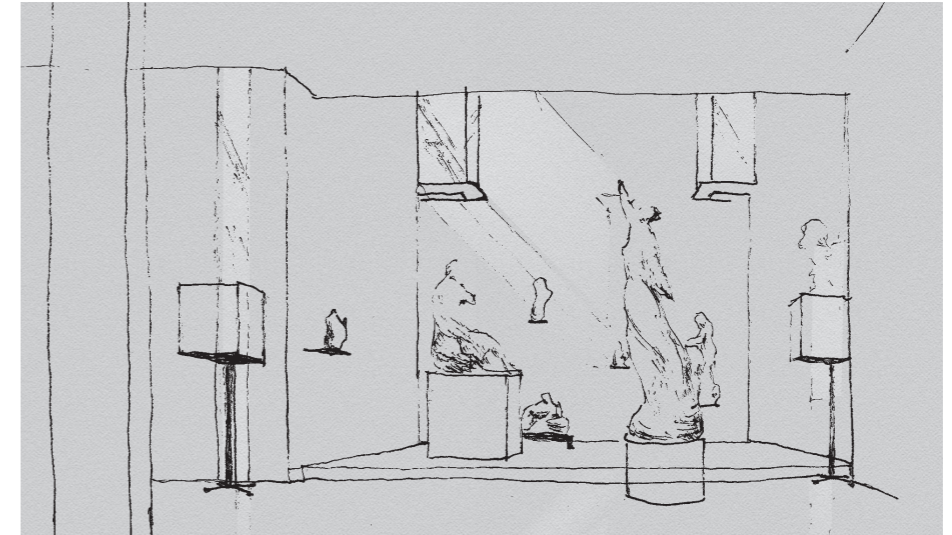
## I. Museography

Encyclopedic



focusing objects itself  
e.g. The British Museum

Scenographic



Objects for a space  
e.g. Canova Museum (by Carlo Scarpa)

Landscape exhibition

Reflect geographical information/ landscape feature into the gallery space?



Olaf Eliasson, 'Riverbed',

at the Louisiana museum of modern art, Humlebæk, Denmark

Image source: <https://www.inexhibit.com/wp-content/uploads/2014/11/Olafur-Eliasson-Riverbed-exhibition-Louisiana-museum-of-art-06.jpg> [Accessed: 7. Apr. 2017]

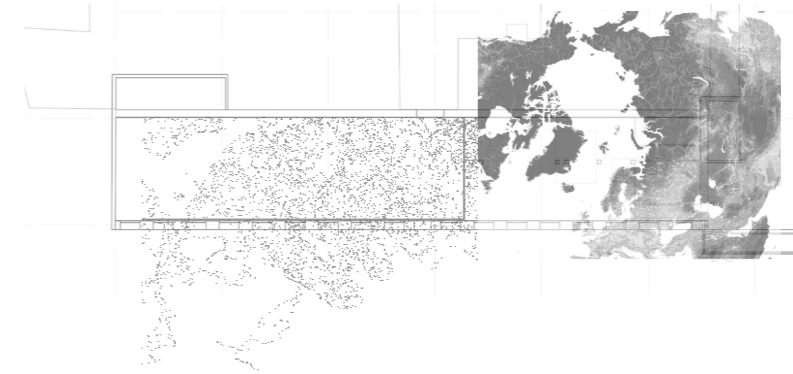


Maya Lin, 'systematic landscapes',

at Henry Art Gallery, Seattle, Washington, USA

Image source: <https://cmuarch2013.wordpress.com/2009/06/14/maya-lin-and-systematic-landscapes/> [Accessed: 9. Apr. 2017]

First image for the gallery space  
Reflecting the map and creating landscape feature, mountains



Landscape exhibition 'Reindeer'

Object are landscape itself  
as it tell about cultural landscape.



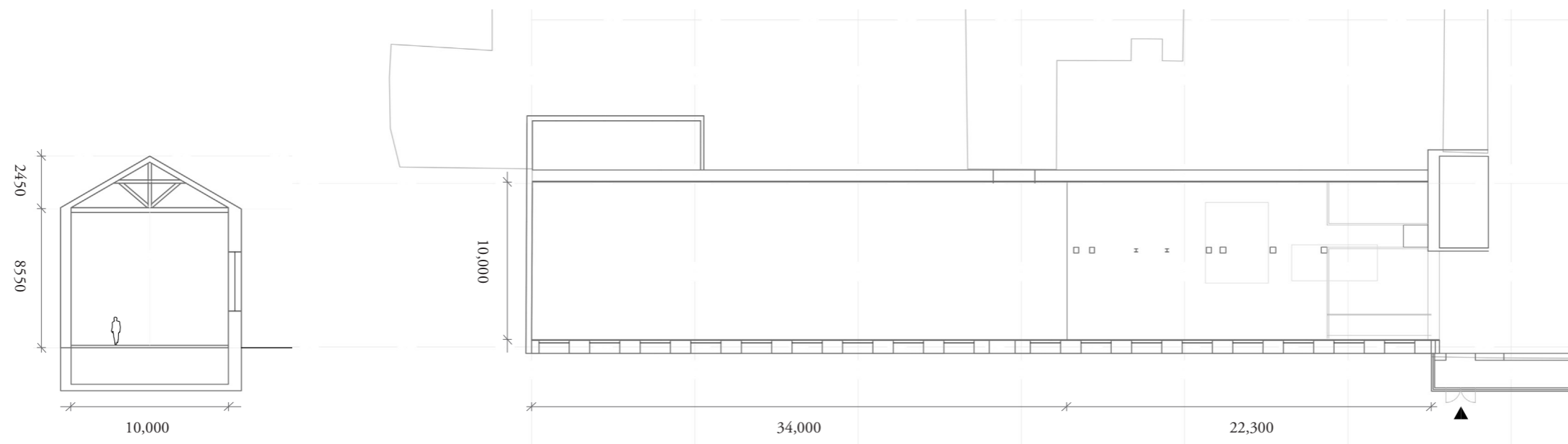
Landscape exhibition 'Reindeer'

Focusing on objects.  
Feeling the space as a landscape.

## II. Site

DogA (The Norwegian Design and Architecture centre), Oslo

Exhibition area: 34m x 10m, Height: 8.5m



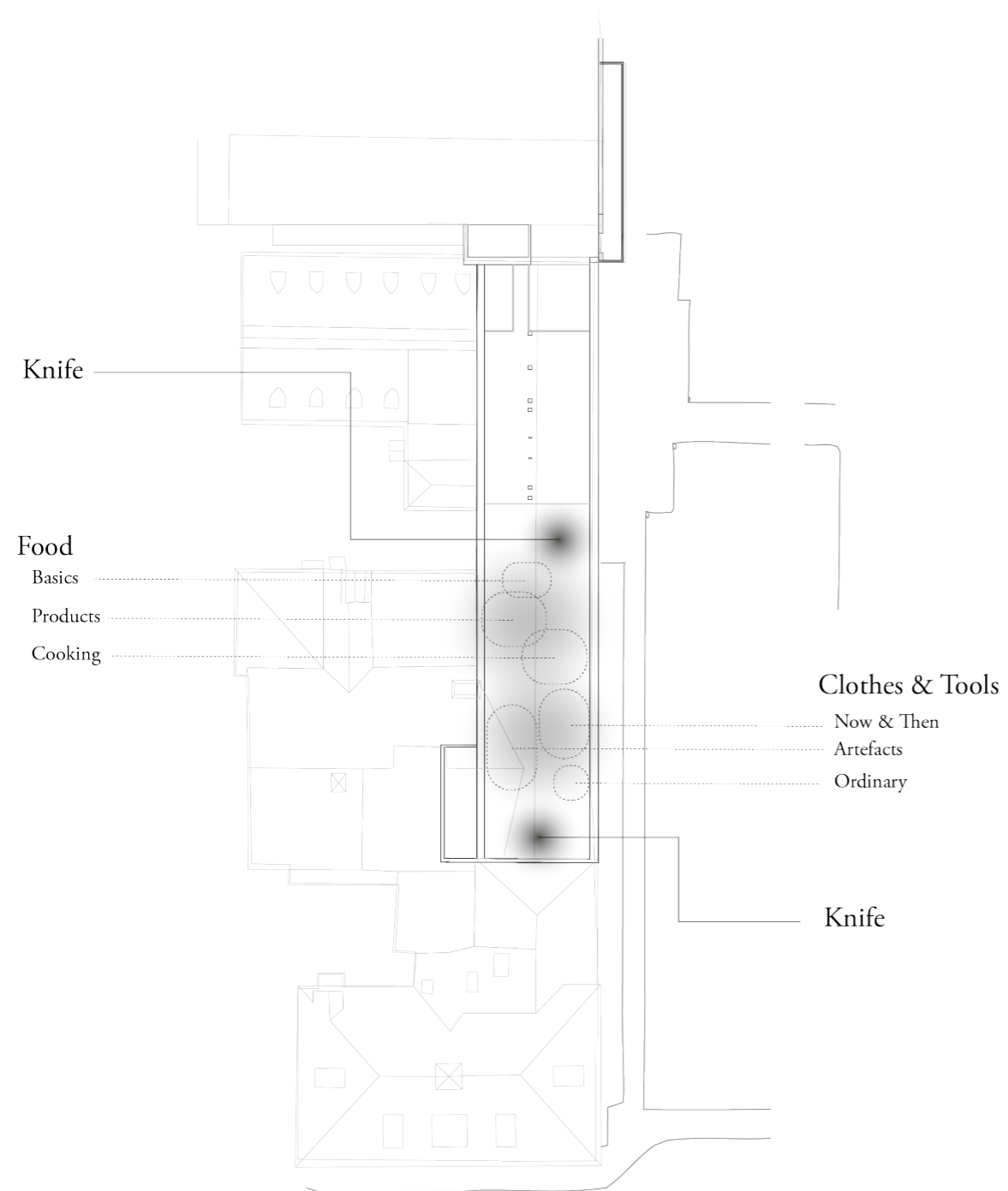


### III. Spacial Context

- Introduction -

From geographical sense at outside to object-driven sense inside,  
thus, from general knowledge to a new perspective.





- Contents -  
 Starting with the knife and ending with the knife,  
 which are important.

Knife & the Case

skin, yarn, birch, steel

They order this kind of knife to local craftsman.

So it is from Scandinavia, even the blade.

He opened plastic cover of hay

by his knife.

Knife & the Case

skin, yarn, birch, steel

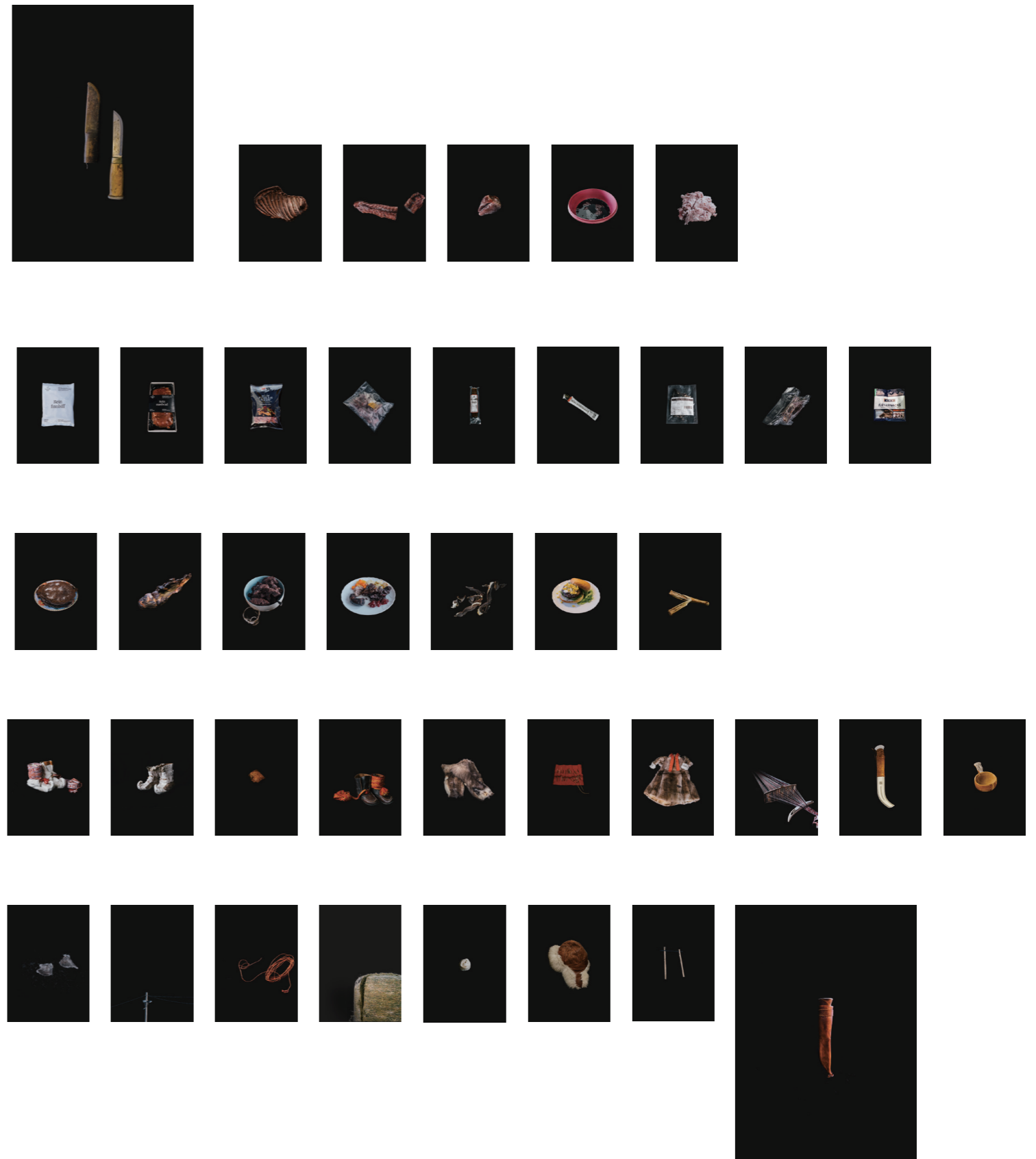
Every herder has their own knife, hanging on their belt.

Knife is still their necessity although it is not only used for slaughtering reindeer.

The use is for cutting anything

except a tie between reindeer and herders.

- Object selection -  
To show globality and locality.  
Objects are selected by the importance of the context, also the  
words in the book.



- Skin -



1. Texture  
Soft texture would express the pasture territory.  
Like a ground which reindeer walk on everyday,  
but we do not.



2. Colour

Colour of skins are varied.  
It is not scientifically explained.  
But the fact is exist.



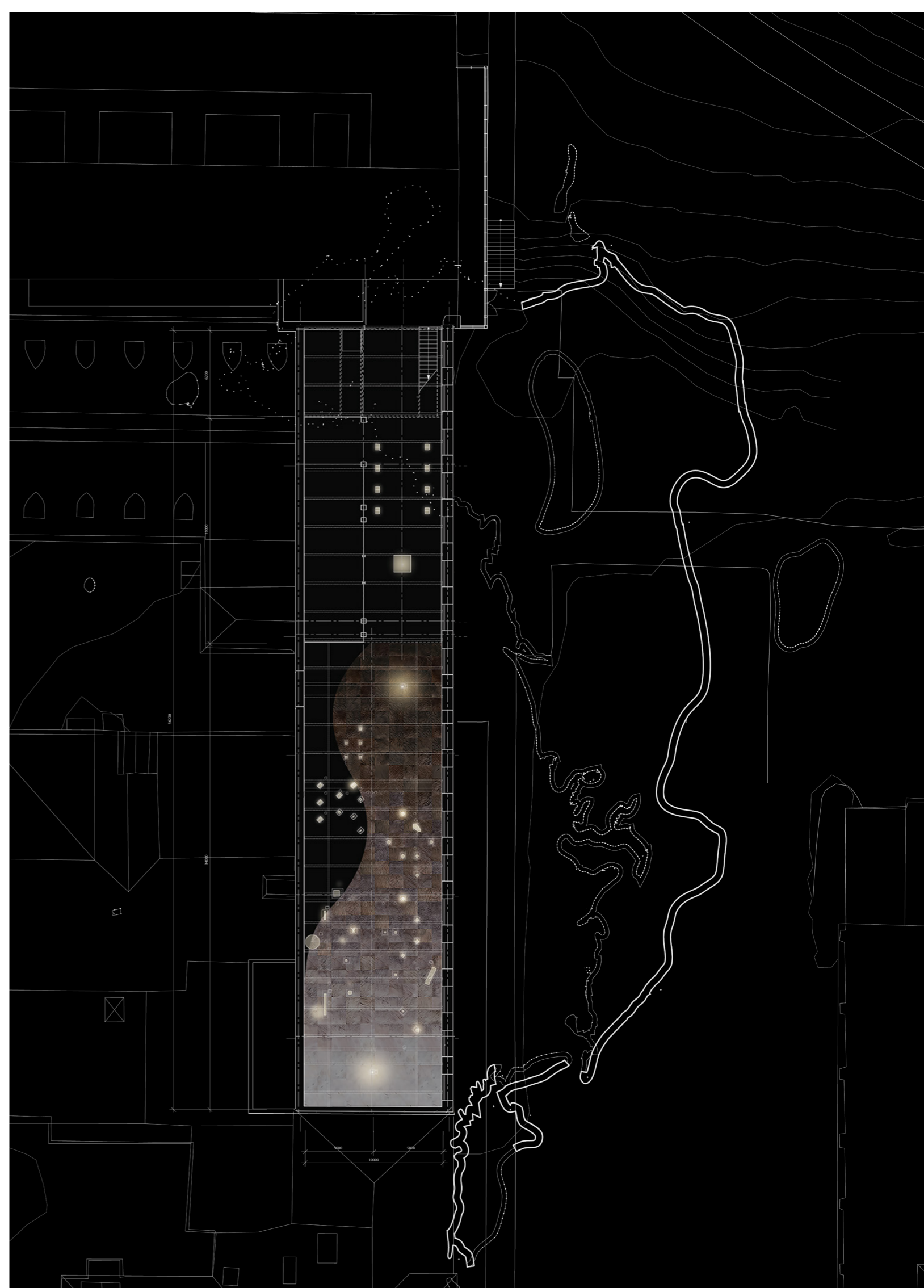
Colour re-composition

Parts of skins could create new pattern,  
that support the exhibition space  
from darkness to light.

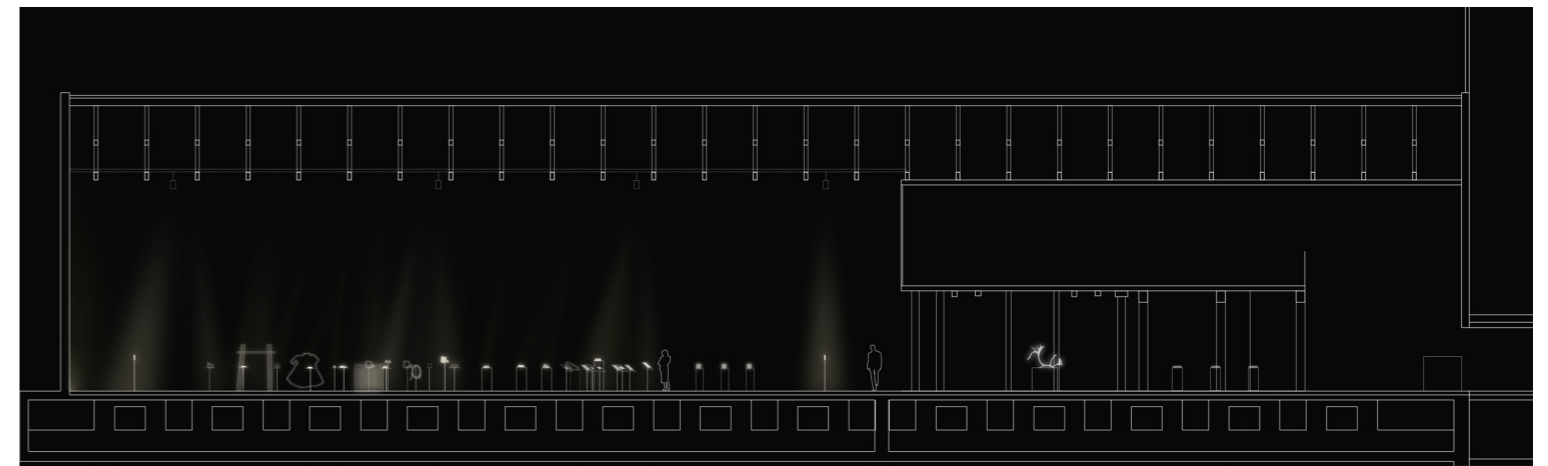


IV. Design proposal

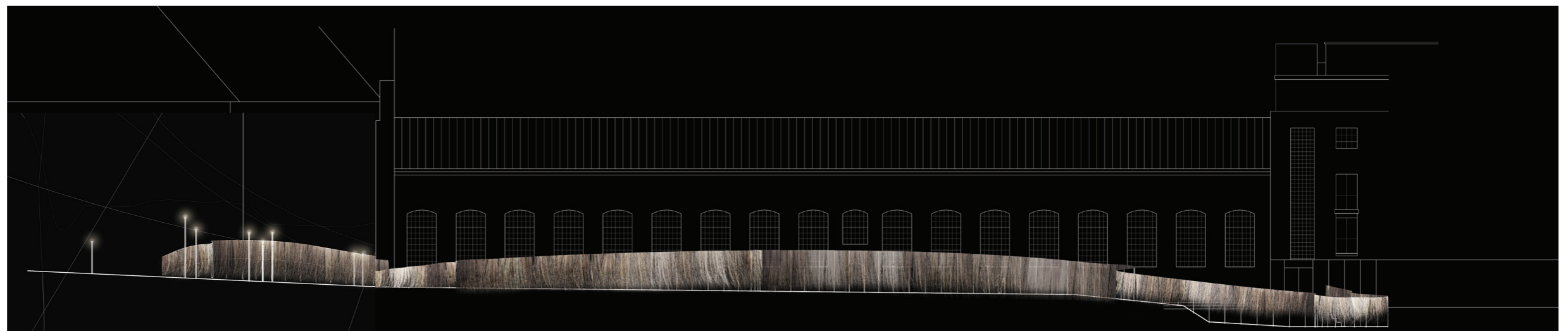
- Main gallery -  
Plan 1:300



Section & Elevation

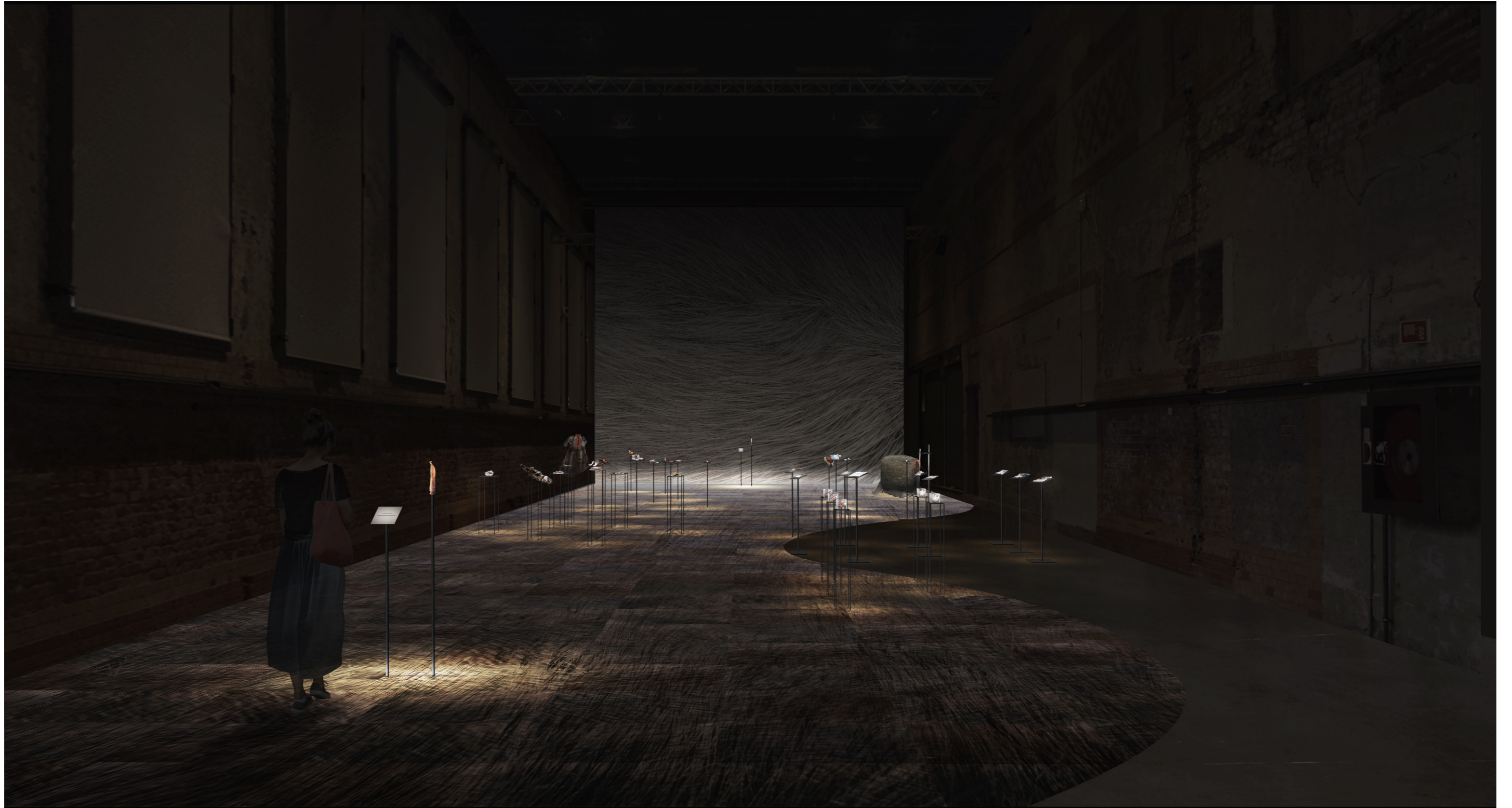


Section 1:300



Elevation 1:300





View of main gallery

## Epilogue

The reindeer from the north come to the south.

The reindeer from the south go to the north.

Mind territory could beyond geography today.

I hope Reindeer would be there forever with the cultural life.



