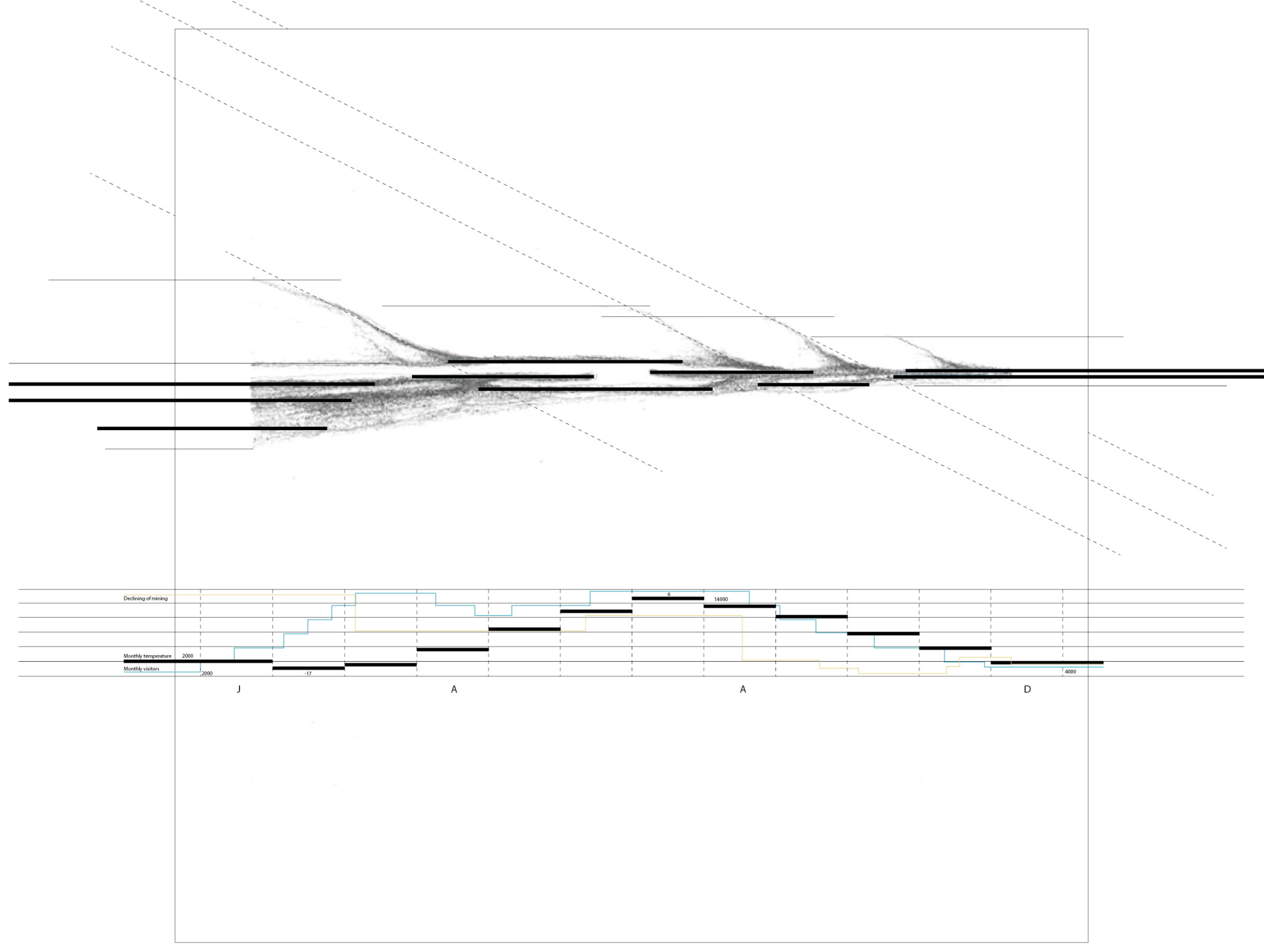
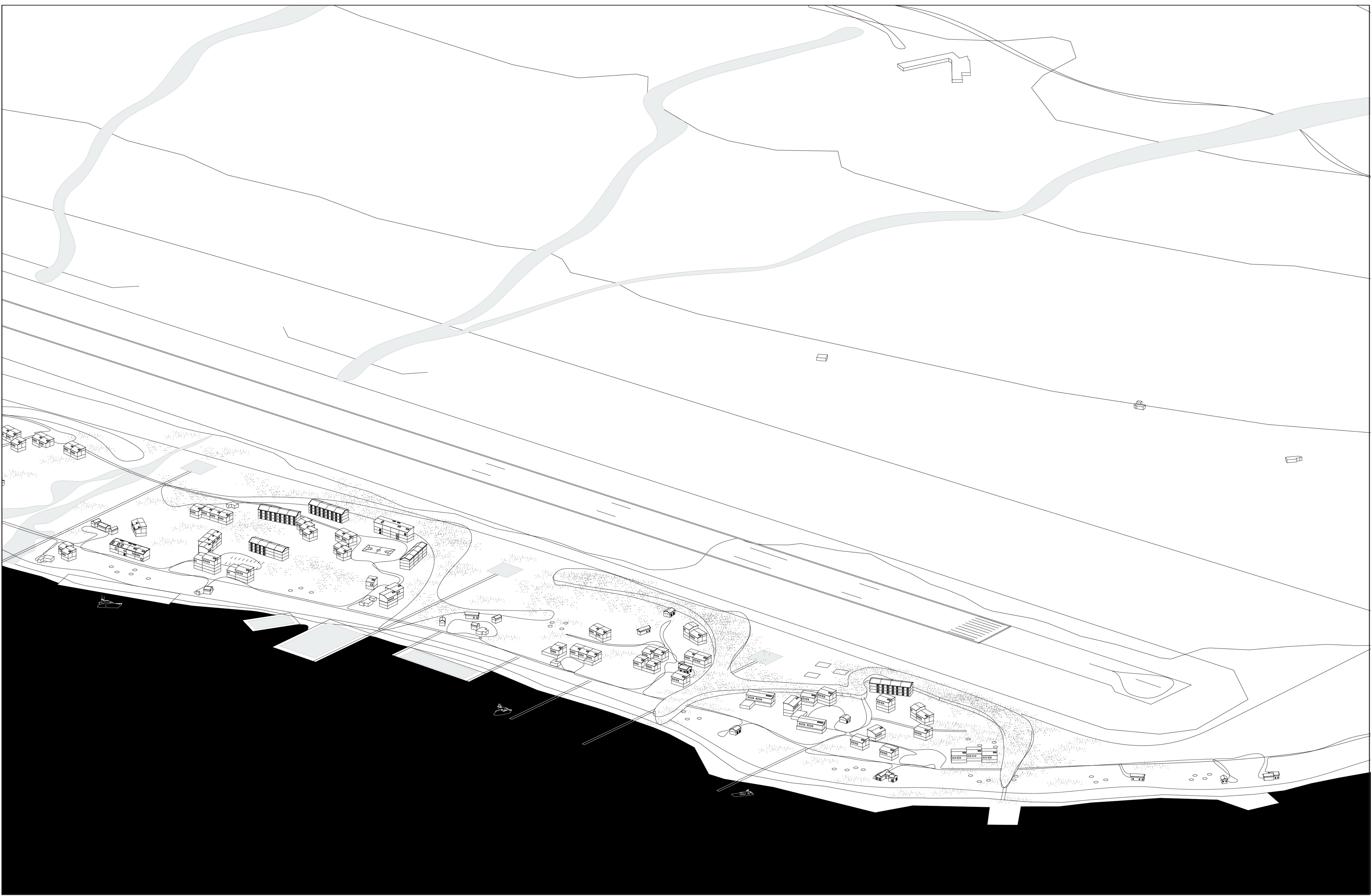


Tomorrow is not promised  
 Abstract  
 Architecture and Urban  
 Design 10/11



The Vernacular Language of the Landscape  
 Spatial and morphological characters through the topographic geometries  
 Study Sketch  
 Spatial Structure of the urban form through the terrain of Gwangju



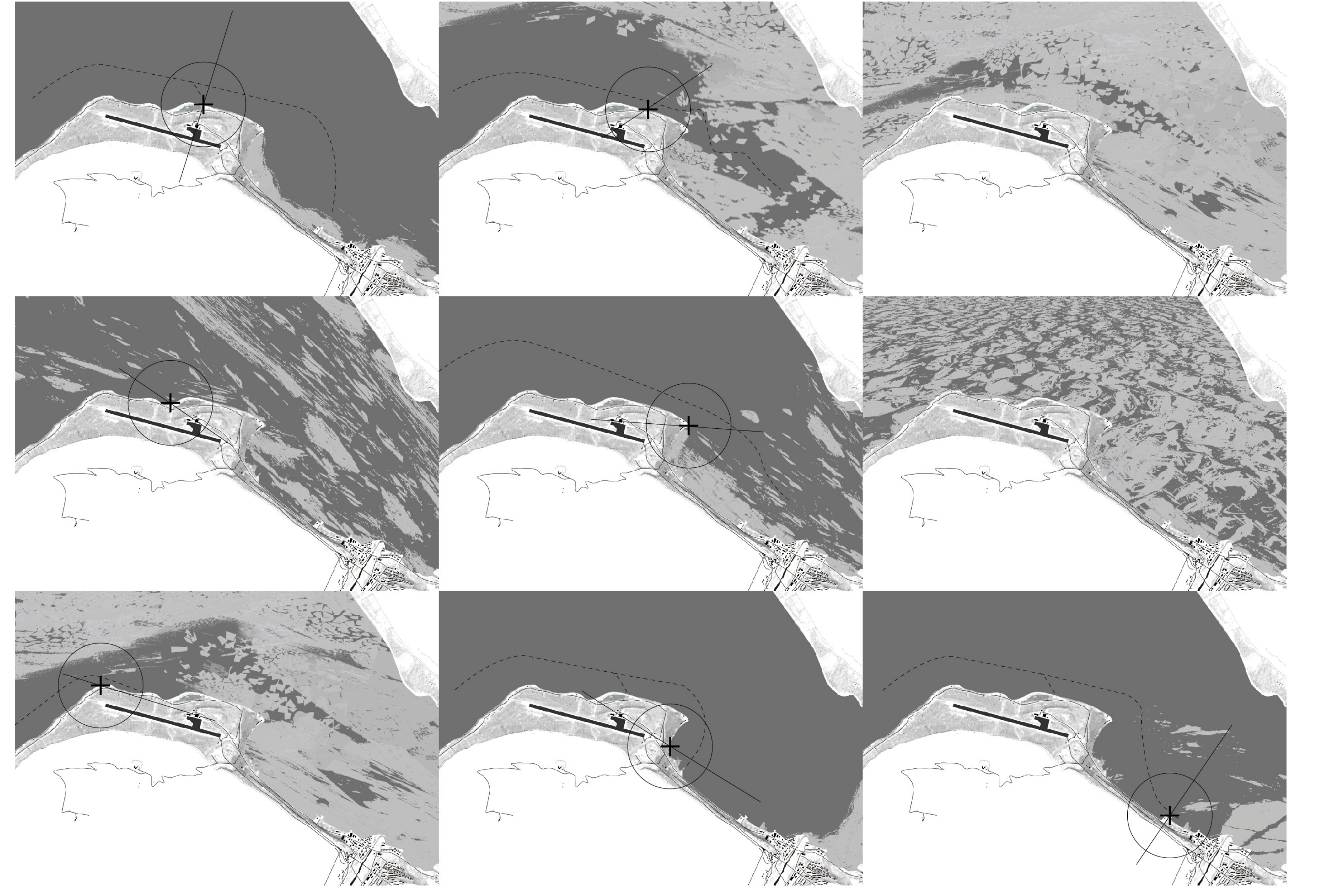
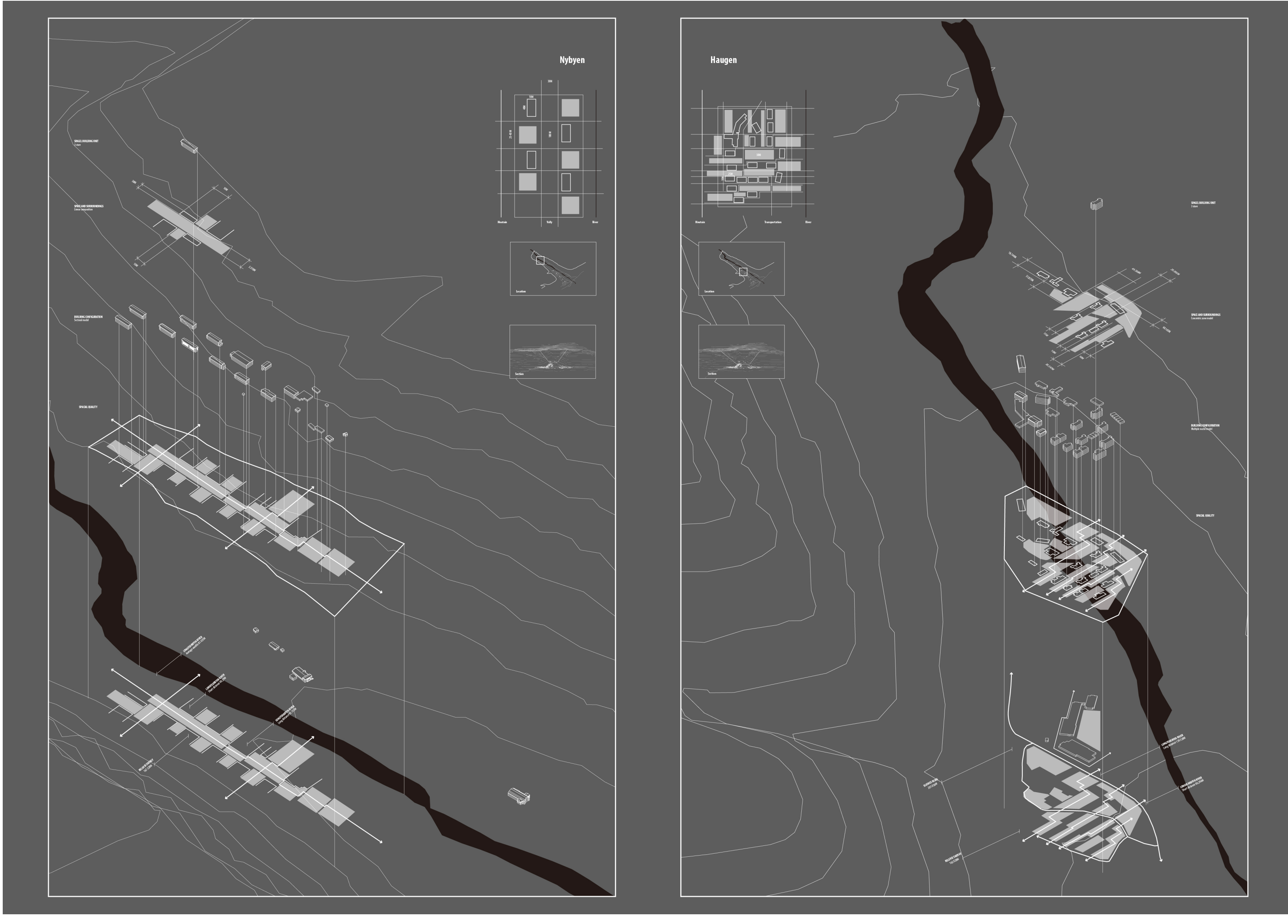




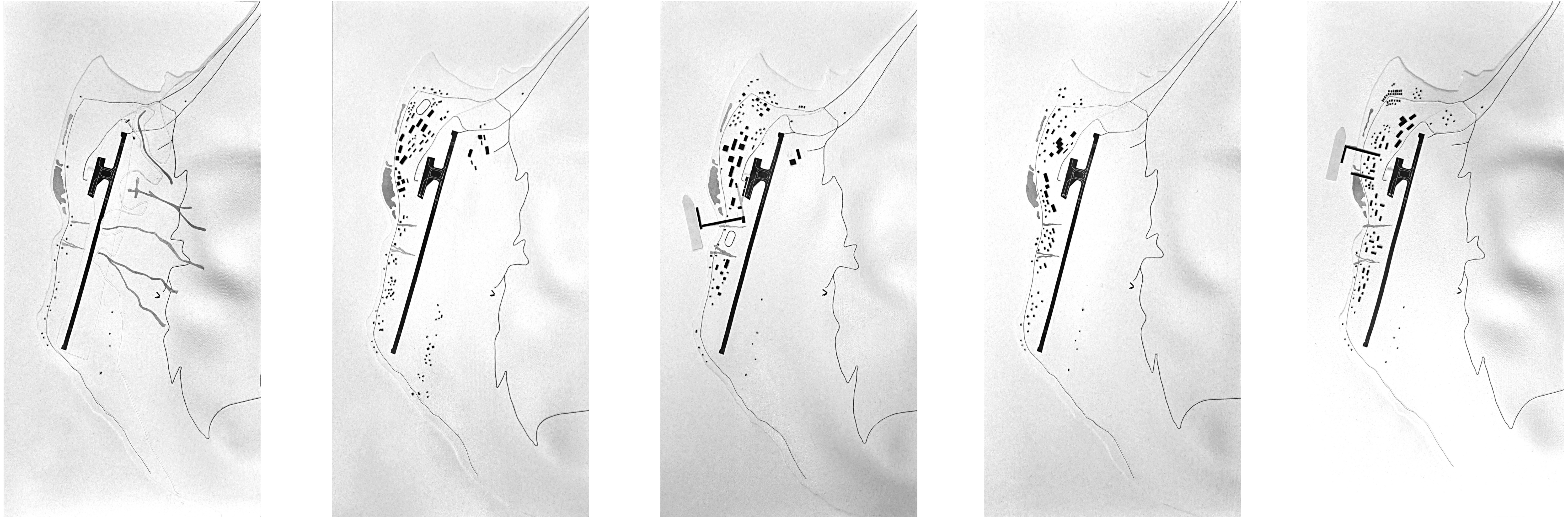




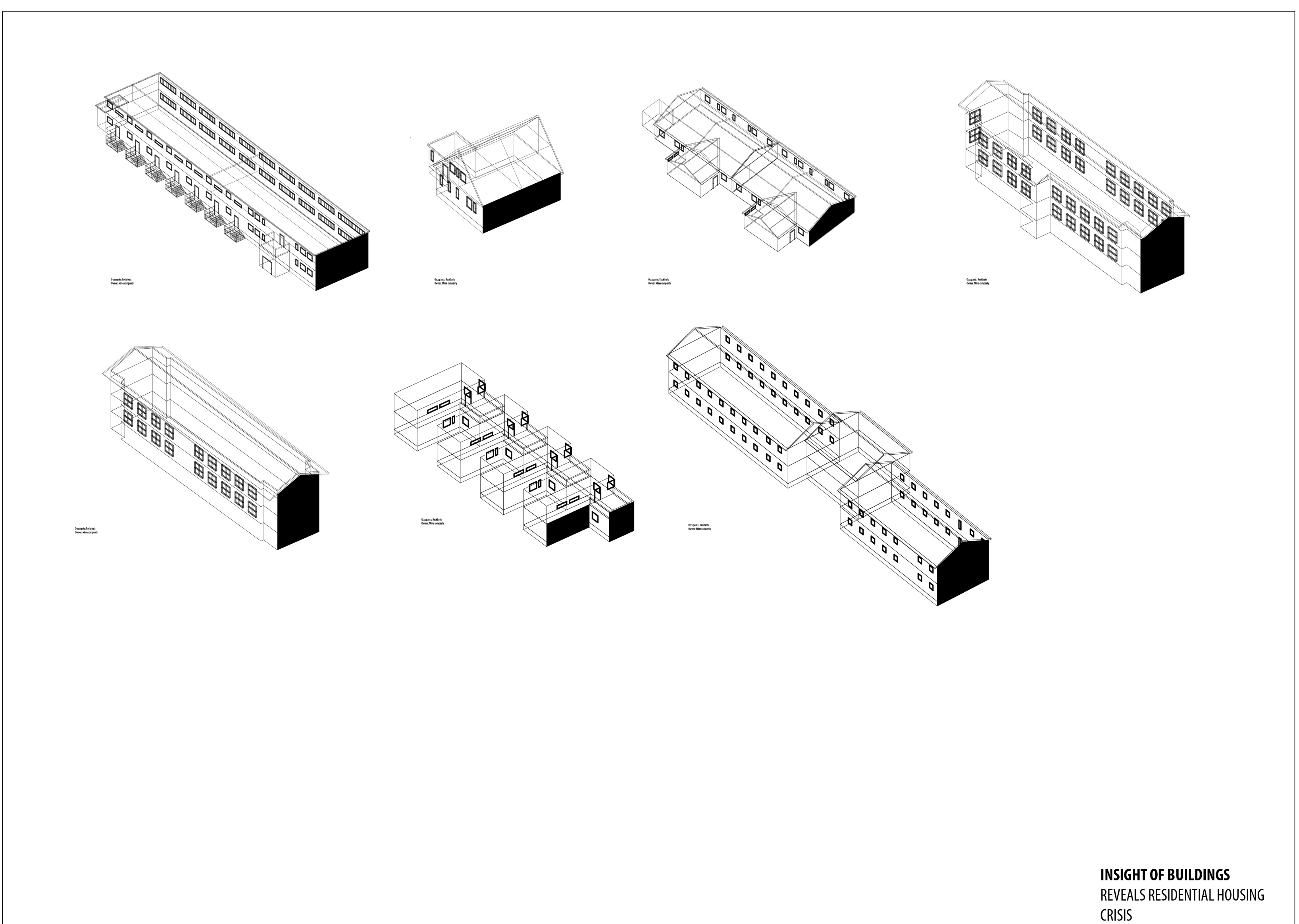




**ICE BREAK PATTERNS AND HARBOR OPENINGS**  
 In the winter time, the island will freeze from the lower side of the longitudinal valley. Different ice frozen and break situations, configuration and formation shows the ideal location for future harbours, ensuring all year round cruising activities.



SUBURB RINGS INTERFACE      CONCENTRATED      GROWING      MODERN      CLUSTER



INSIGHT OF BUILDINGS REVEALS RESIDENTIAL HOUSING CRISIS

