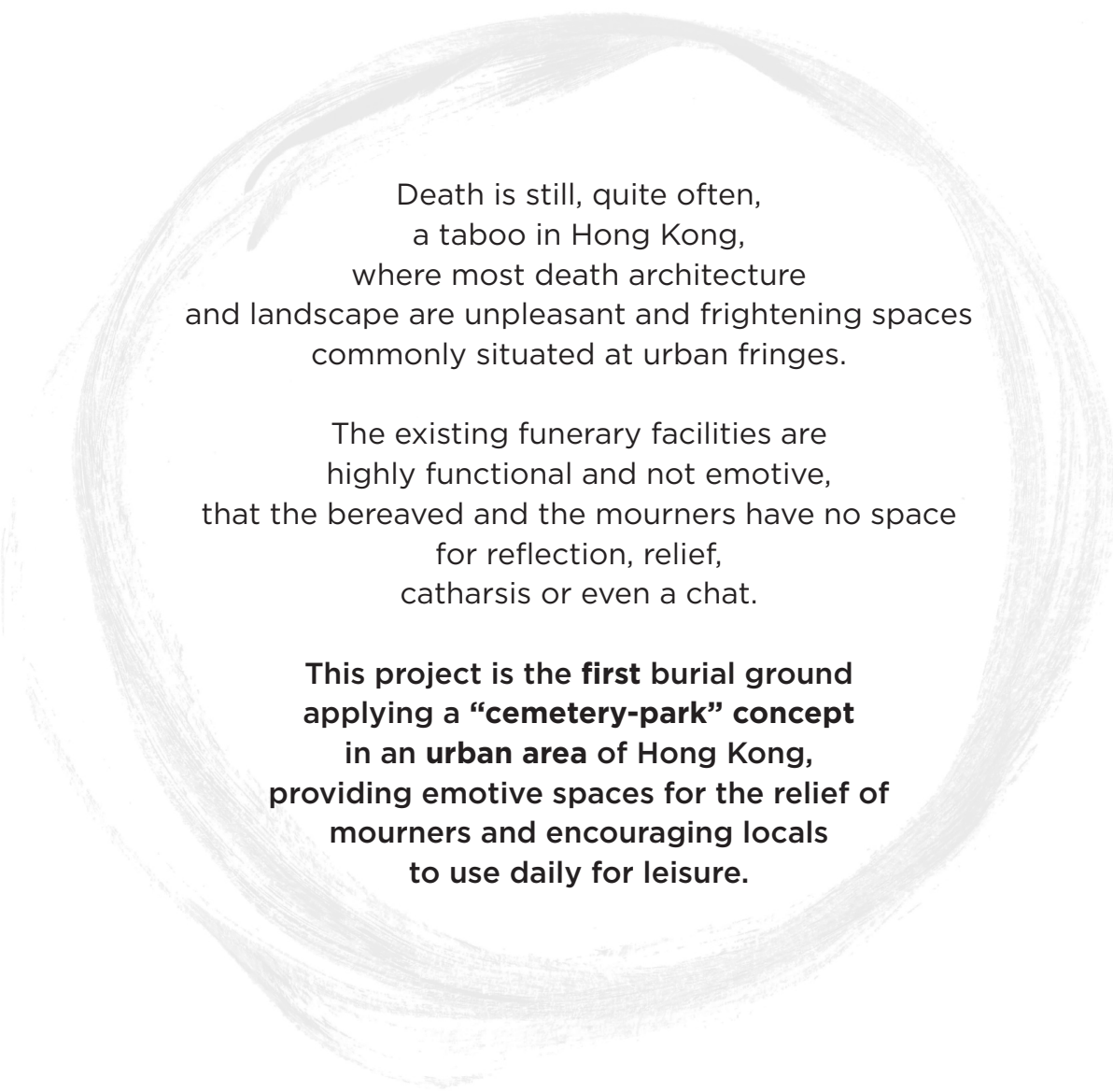


after death

a multidimensional peace of mind

2017 SPRING DIPLOMA | MASTER IN LANDSCAPE ARCHITECTURE | VICKY CHIN WAI KONG
AHO Oslo School of Architecture and Design, Institute of Landscape and Urbanism



Death is still, quite often,
a taboo in Hong Kong,
where most death architecture
and landscape are unpleasant and frightening spaces
commonly situated at urban fringes.

The existing funerary facilities are
highly functional and not emotive,
that the bereaved and the mourners have no space
for reflection, relief,
catharsis or even a chat.

**This project is the first burial ground
applying a “cemetery-park” concept
in an urban area of Hong Kong,
providing emotive spaces for the relief of
mourners and encouraging locals
to use daily for leisure.**

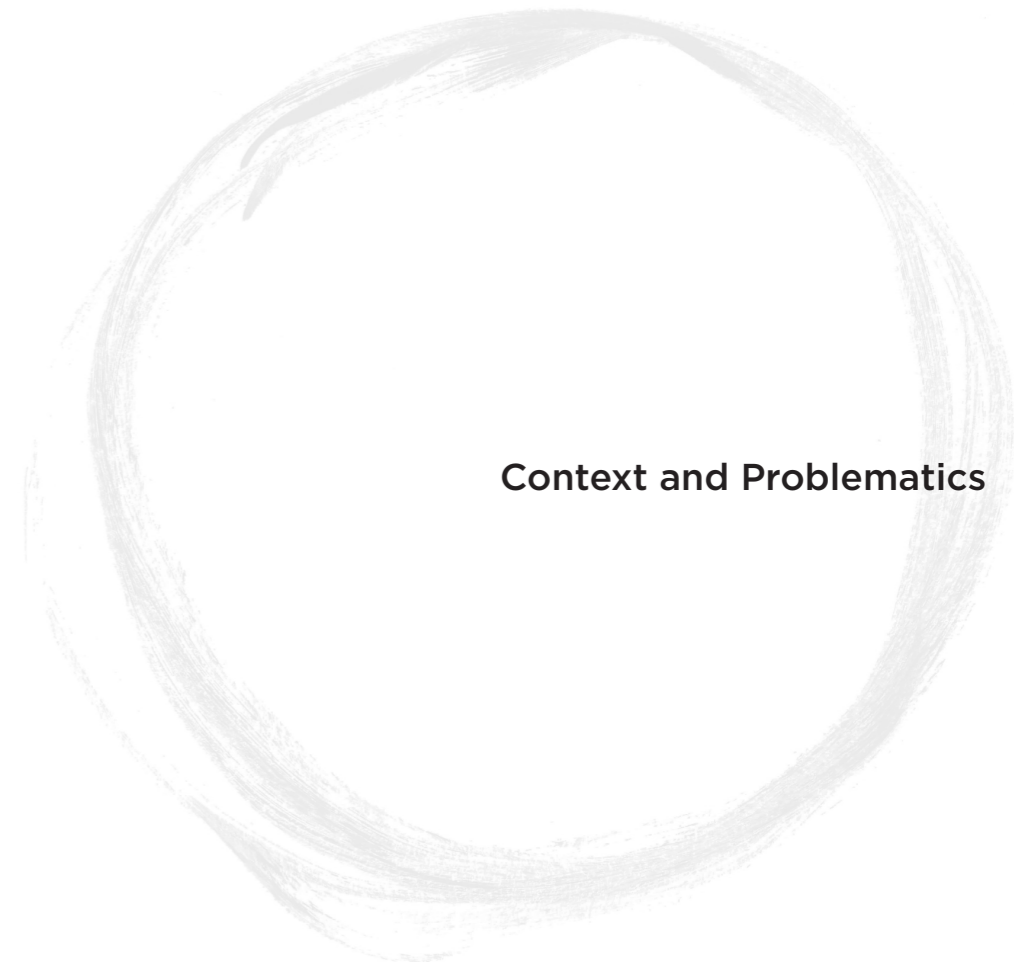
1	THE PROJECT	context problematics
2	DESIGN CONCEPT & PROPOSAL	site selection design strategies
3	THE DESIGN & PROCESS	mood paintings & journeys master layout plan sections models perspectives in comics
4	PROJECT VISION	evolution prototype

foreword | content

This booklet is an excerpt for censors.
Should you wish to read more
about certain chapters
or see more detailed images,
please refer to the full booklet.

- 1 TRADITION | TABOO
- 2 FEAR OF DEATH
- 3 DENSE | LIFELESS | SCARCITY OF SPACE
- 4 REMOTENESS OF FUNERARY FACILITIES
- 5 POPULATION SUFFERING FROM DEPRESSION

3



Context and Problematics

死 𣦵 𣦵 𣦵 𣦵 𣦵

THE TRADITION

死

death | dead

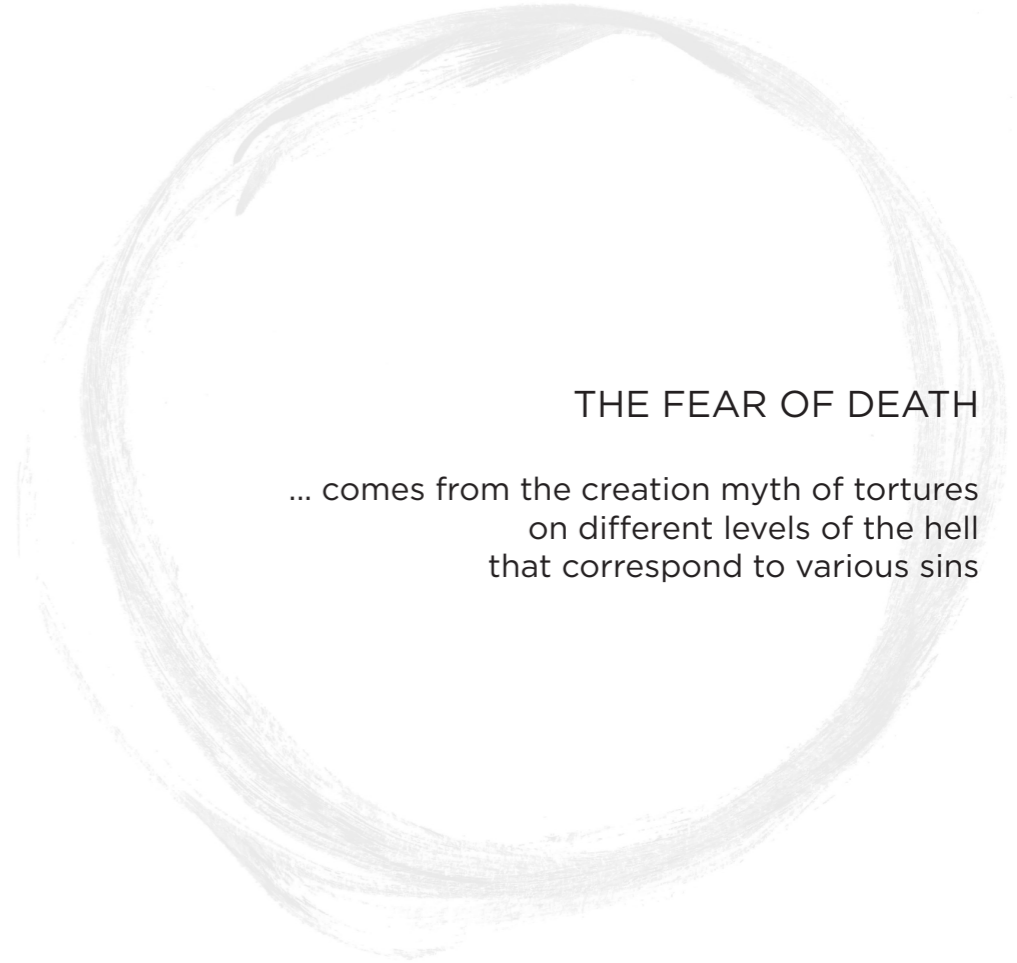
The word “death” or “dead” in Chinese originates from Oracle bone script which is a form of pictographic writing.

It shows a person mourning beside the remains of the dead. These spatial images describe a situation that carries emotions.

Death was, and is, part of life, not the opposite. But people nowadays just avoid this inevitable topic...

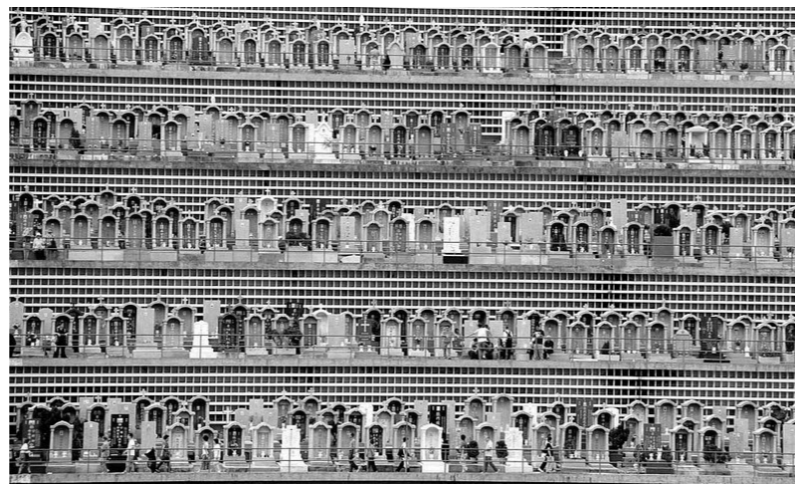


5



THE FEAR OF DEATH

... comes from the creation myth of tortures on different levels of the hell that correspond to various sins



EXISTING FUNERARY FACILITIES
in Hong Kong

dense | breathless
dark | scary
lifeless | unpleasant

RELIGIOUS AFFILIATION
IN HONG KONG



55% No religion

- 14% Buddhism
- 14% Taoism
- 7% Protestant
- 5% Catholics
- 4% Muslim
- 1% Hinduism

note: figure of 2014 by Government of HK

46,100 deaths in 2016, estimated 55,000 deaths in average in coming 20 years

in 2016 9% burial and 91% cremation

estimated 5% burial and 95% cremation,

meaning 52,000 cases of cremation in coming 20 years

6 crematoria

214,332 niches (9,115 vacant niches as at June 2015) in 8*+140** columbaria

4*+23** cemeteries for coffin burial (3 for indigenous villagers),

a total of 23,728* coffin burial spaces (8,178 spaces vacant as at June 2015)

exhumation after 6 years and re-burial or cremated

217,411* urn burial spaces (38,052 spaces vacant as at June 2015)

3 designated waters for sea scattering

11*+2** gardens of remembrance for scattering of cremated ashes

note: *public **private

SCARCITY OF LAND

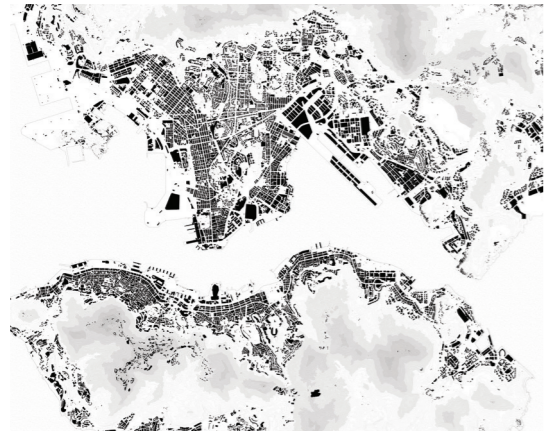
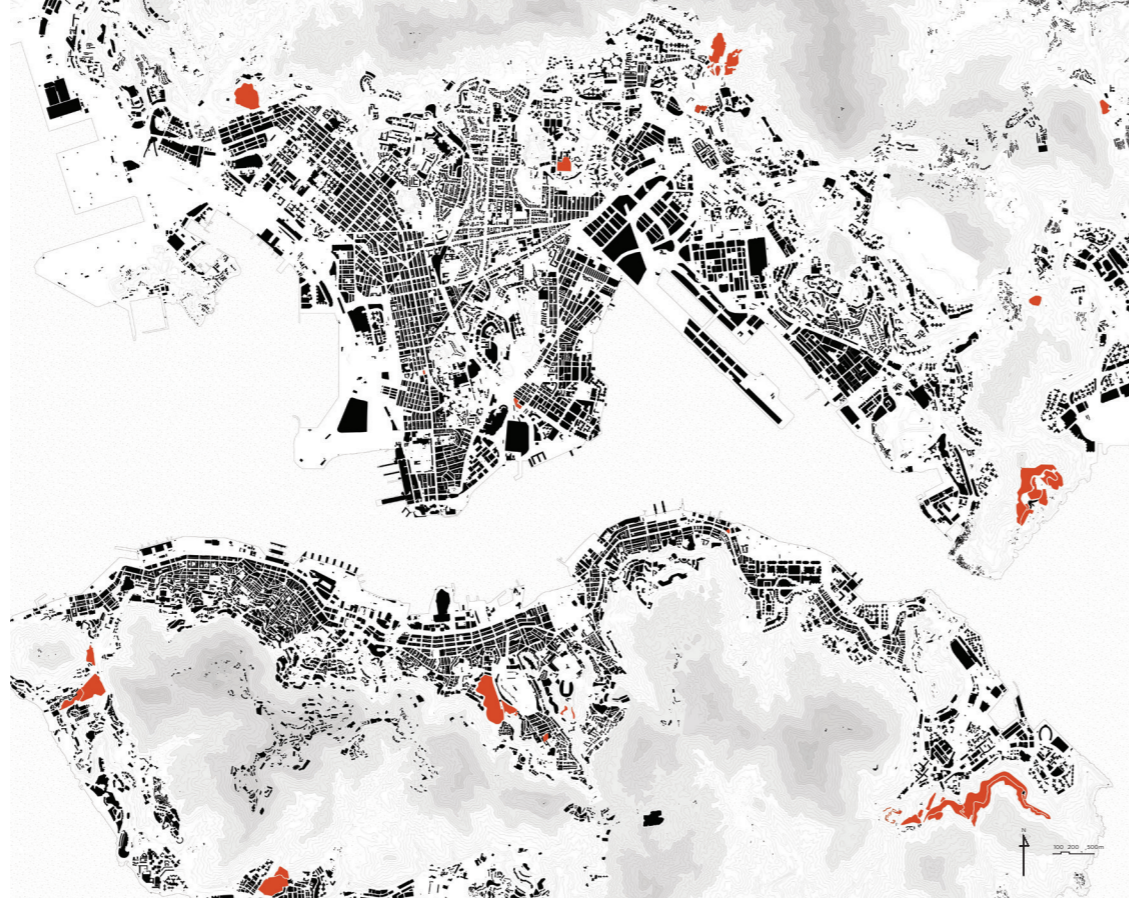
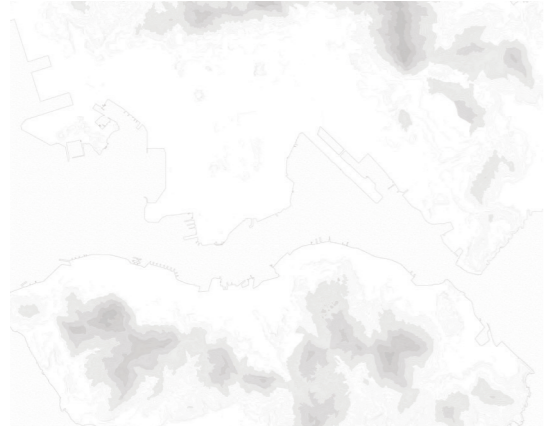
despite all those numbers,
people still have to wait for 2-3 years
to get an urn placement



8

HONG KONG

- hilly
- islands
- 1106 sq km
- long coastline
- longest working hour
- longest life expectancy
- population of 7.3 million
- one country two systems
- 8th largest trading entity
- 4th most densely populated
- famous deep natural harbour
- 2nd largest number of high-rises
- most competitive & freest economy

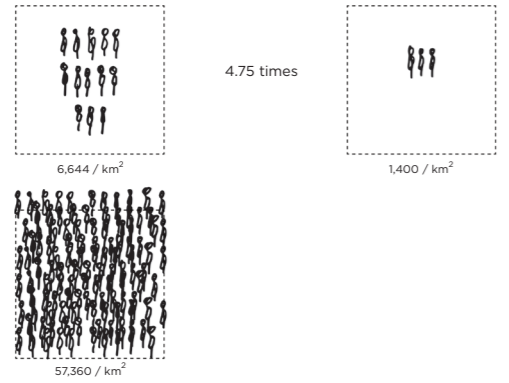
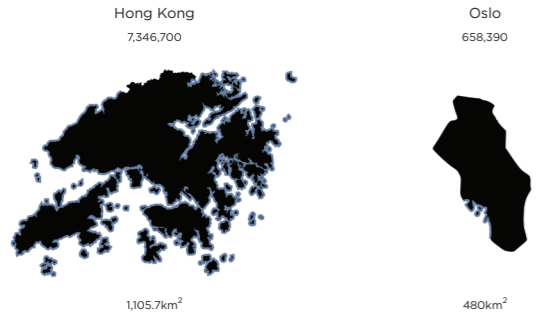


REMOTENESS OF FUNERARY FACILITIES

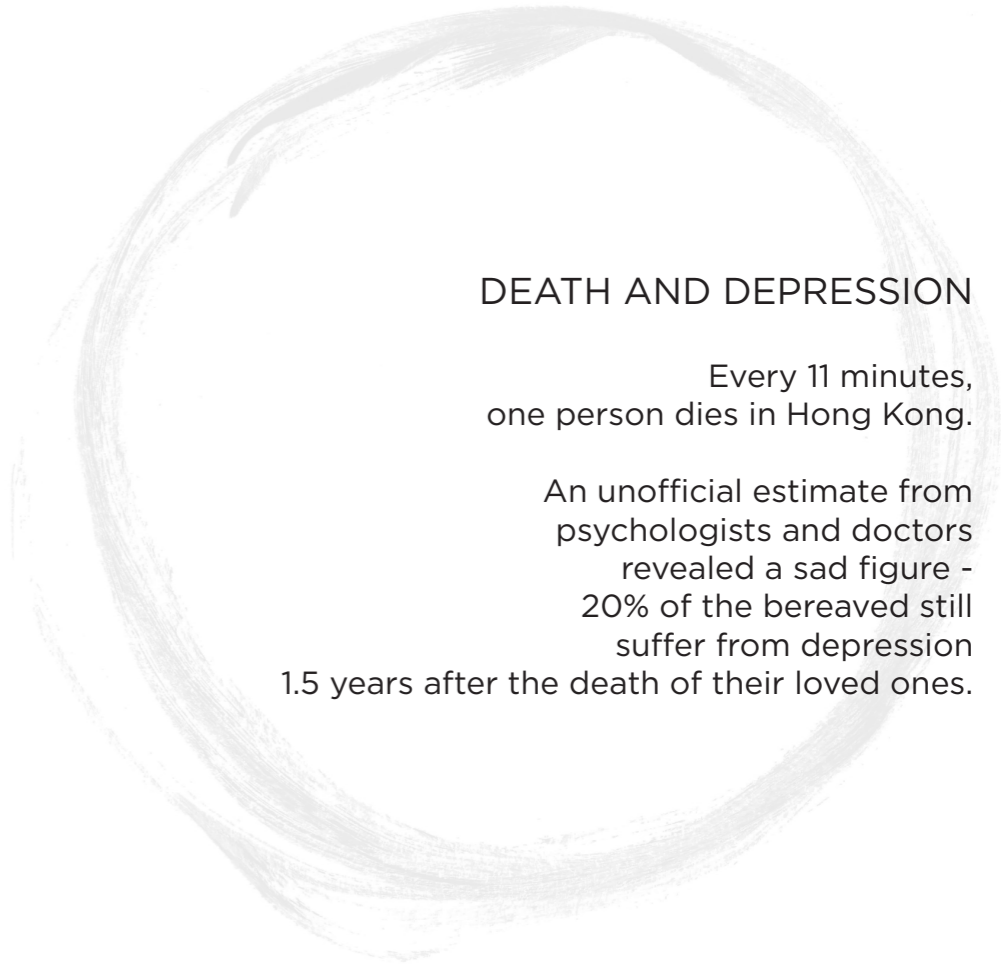
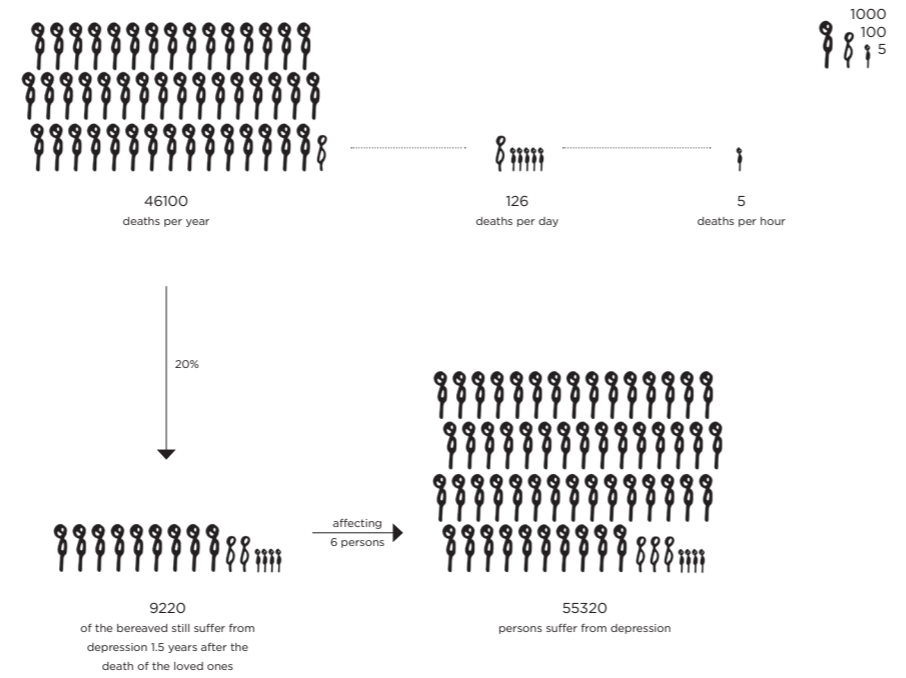
Traditionally the living and the dead
do not reside
in the same neighbourhood.

Funerary facilities are uninviting and
mostly located at urban fringes.

Mourners usually pay 3-4 visits per year.



		(Norway)
birth	60800 8.3%	59000 11.4%
death	46100 6.4%	40700 7.9%

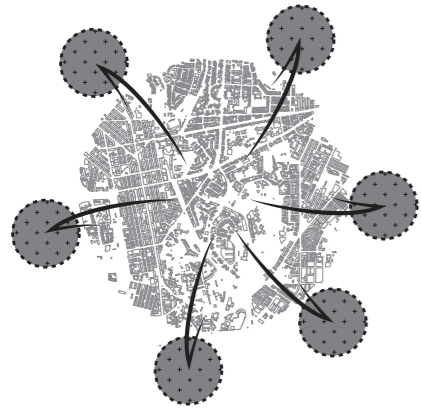


DEATH AND DEPRESSION

Every 11 minutes,
one person dies in Hong Kong.

An unofficial estimate from
psychologists and doctors
revealed a sad figure -
20% of the bereaved still
suffer from depression
1.5 years after the death of their loved ones.

EXISTING - REMOTE



visit 3-4 times a year

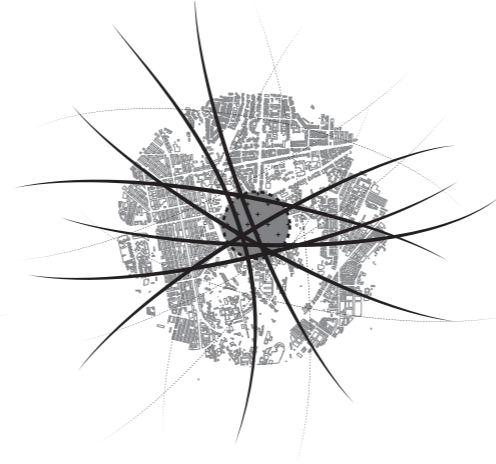
Ching Ming Festival 清明
Chung Yeung Festival 重陽
Birthday 生忌
Death day 死忌

BARELY WITHIN THE CITY

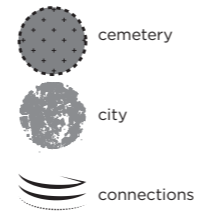


passing by occasionally

NEAR CITY CENTRE



**fuse into [everyday]
leisure activity**



DESIGN CONCEPT

**The Cemetery-Park Concept
in an Urban Area**





site selection
for the first
"cemetery-park"
in urban area!



DESIGN PROPOSAL

A **Cemetery-Park**
in an **Urban area**
along the beloved **Harbourfront**

The very first cemetery-park in Hong Kong serves both as a **natural burial place** and a **leisure park** bringing in various users who in turn **bring liveliness** to this atypical burial place.

Limited to **natural burial** of cremated ashes, posing much less demand on space and promoting green burials

Openness emphasized to combat fear while **intimate spaces** for companionship or escape are not compromised



13

SITE SELECTION

Hong Kong | a Bridge between East and West

selection criteria

urban area | no more avoidance
proximity to residents | liveliness from daily use
harbourfront and landmarks | driver for visitors



South Apron area

“a smooth transition between the Runway attractions and the surrounding Kowloon Bay and Kwun Tong business areas, and help catalyze the regeneration of the areas”

“A continuous landscape promenade ... as key green connectors linking up individual open spaces, residential areas and surrounding areas”

Kai Tak Approach Channel and Kwun Tong Typhoon Shelter

water sports and recreational activities

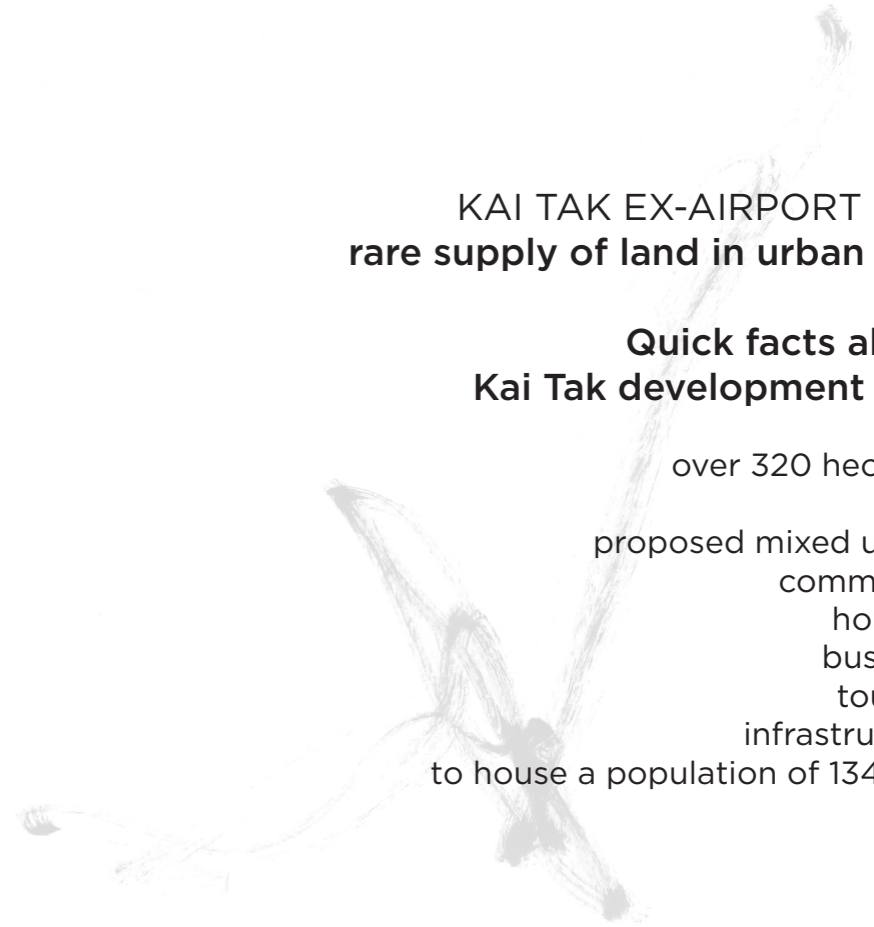
KAI TAK EX-AIRPORT SITE
rare supply of land in urban area

Quick facts about Kai Tak development area

over 320 hectares

proposed mixed use of
community
housing
business
tourism
infrastructure

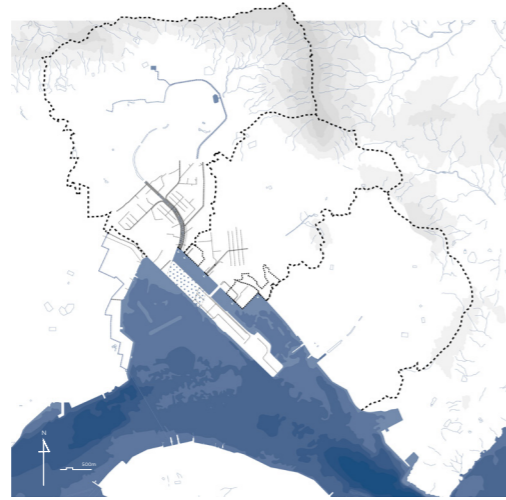
to house a population of 134,000





1 GREEN

accessible green in Kai Tak serving each residential area



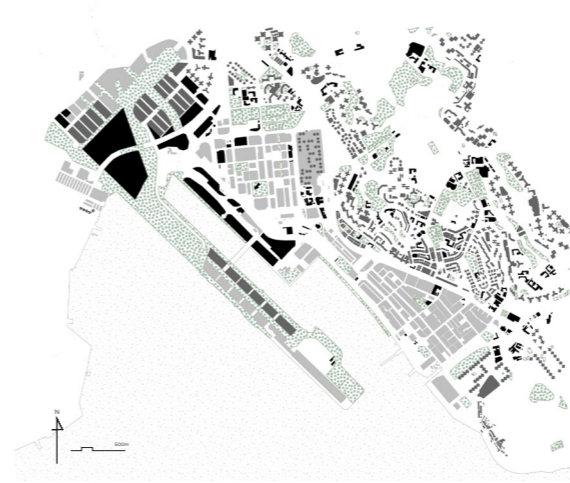
2 WATER

extensive water system with steady water supply and floodless drainage infrastructure



3 TRANSPORT

well connected inter- and intra-district by highways and public transport systems



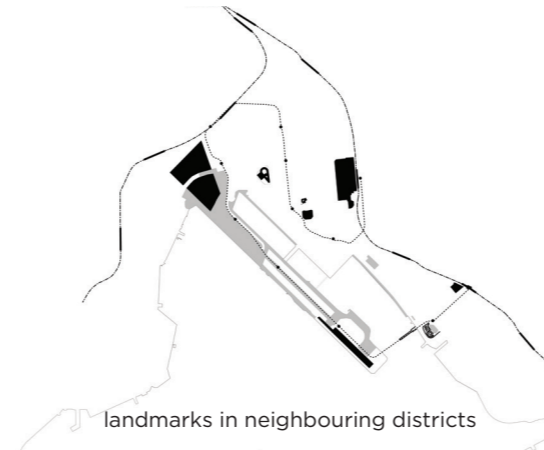
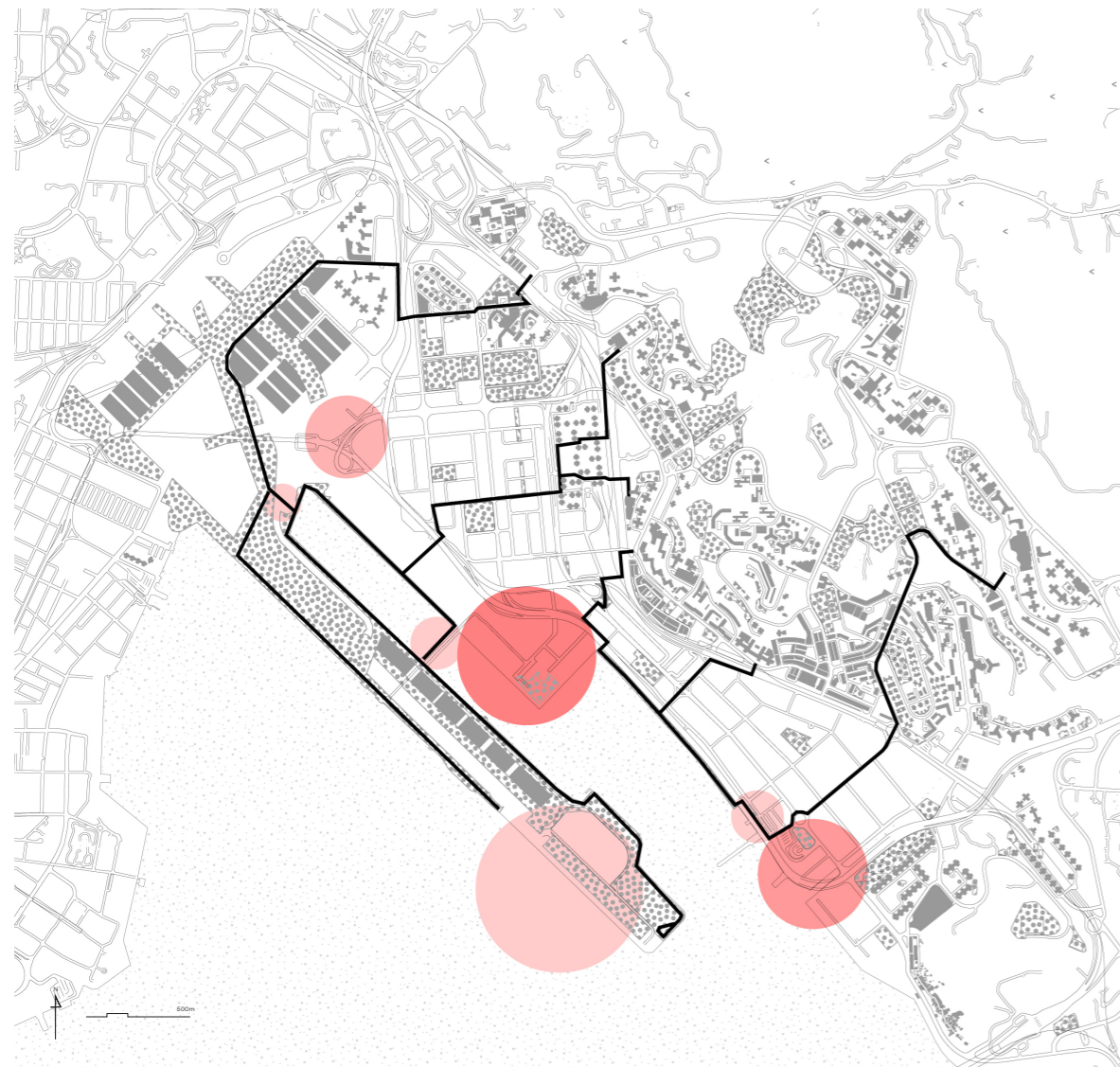
4 LAND USE

various land use including government, institution, community, commercial, industrial (under revitalization), residential and public open spaces

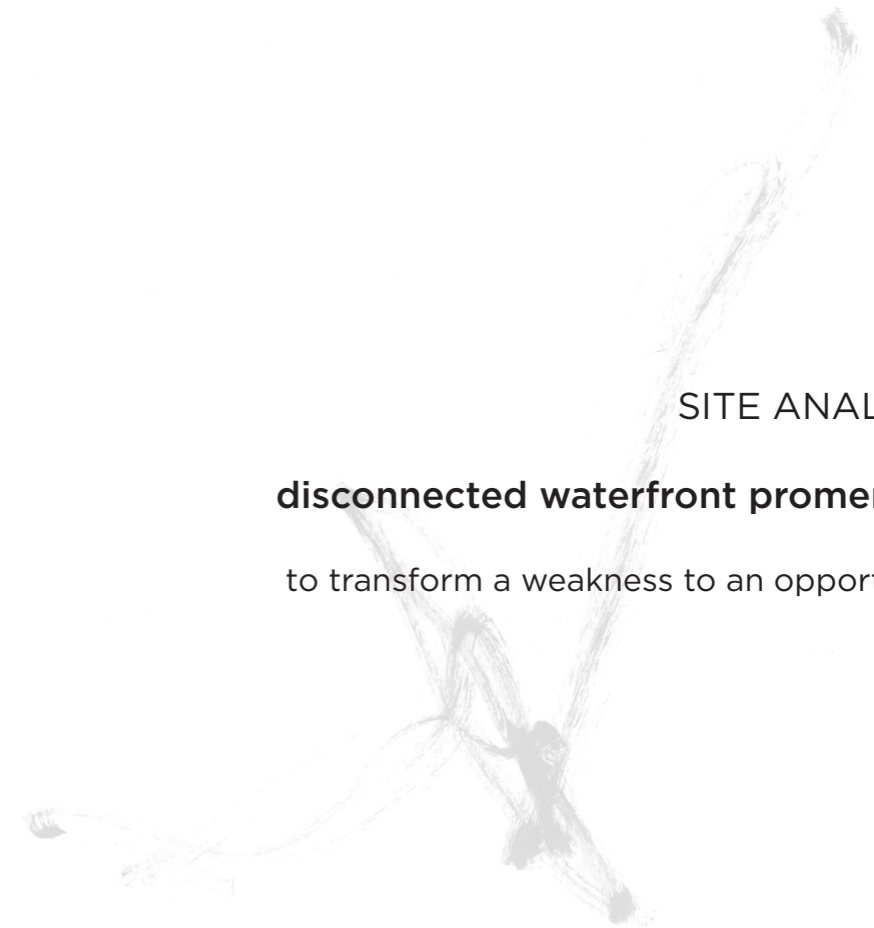


5 NO MORE RECLAMATION

ordinance and judgement stating “the presumption against reclamation in the harbour... can only be rebutted by establishing an overriding public need for reclamation.”



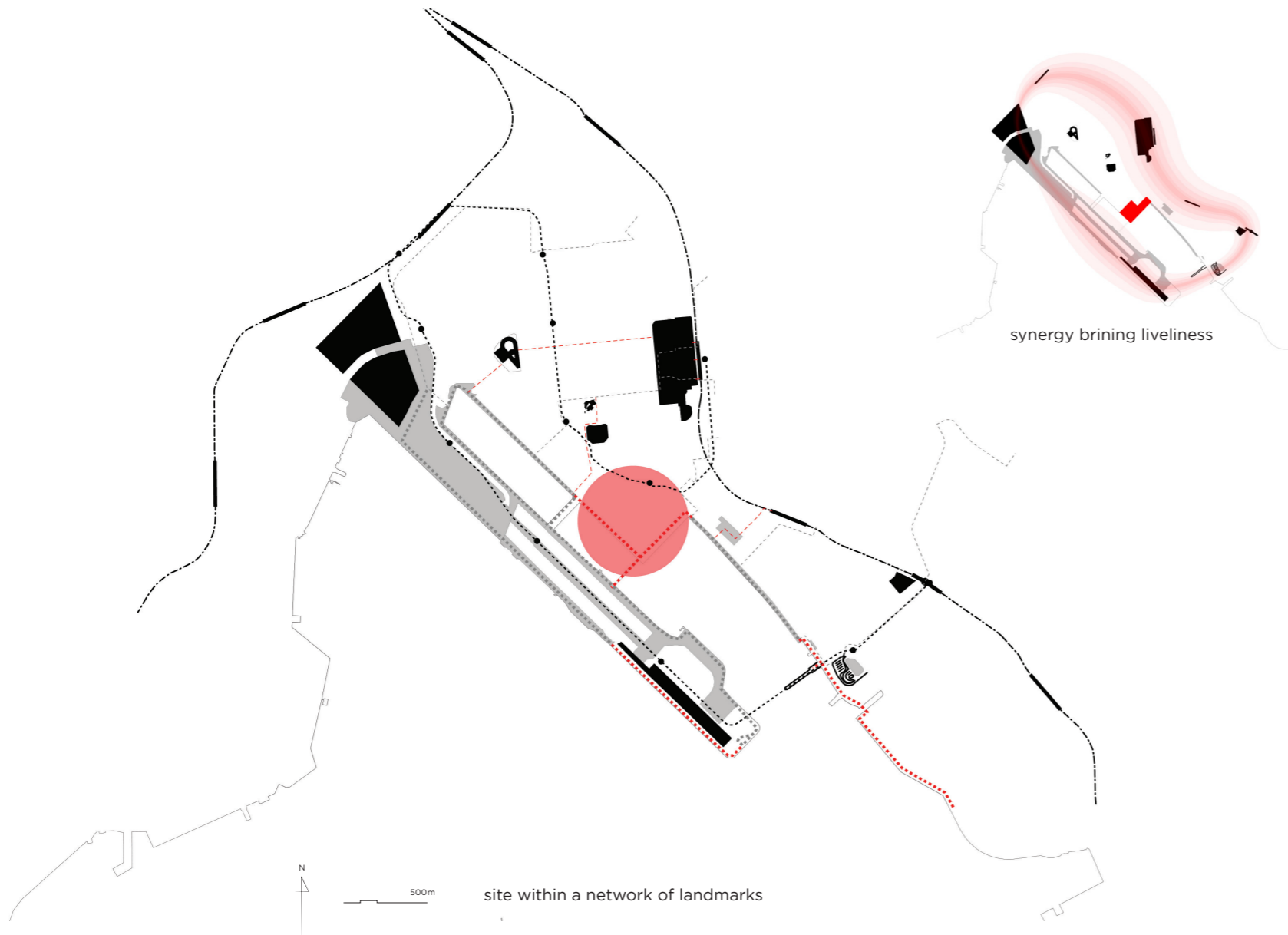
16



SITE ANALYSIS

disconnected waterfront promenade

to transform a weakness to an opportunity

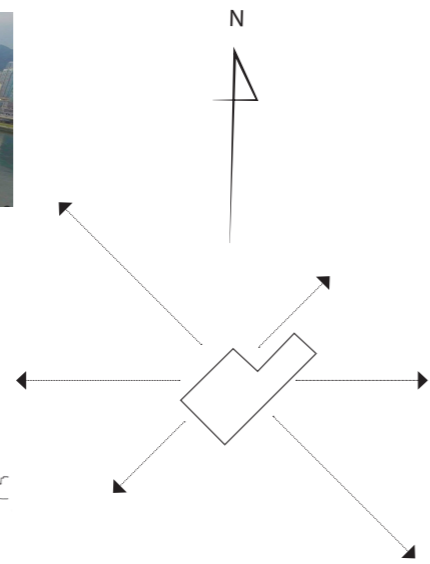


17

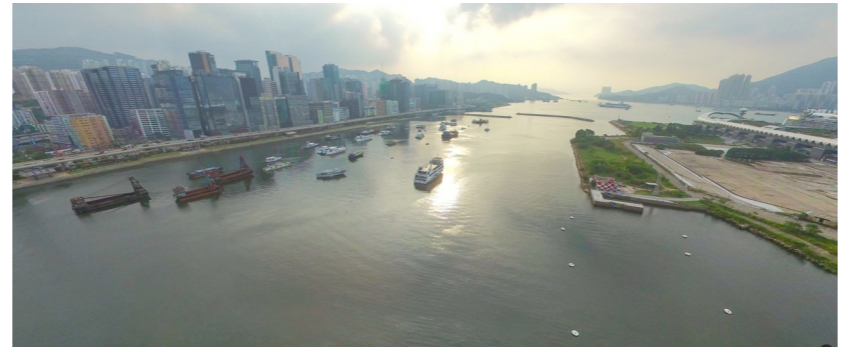




- * mid- and high-rise buildings
- * mountain
- * industrial and office hub



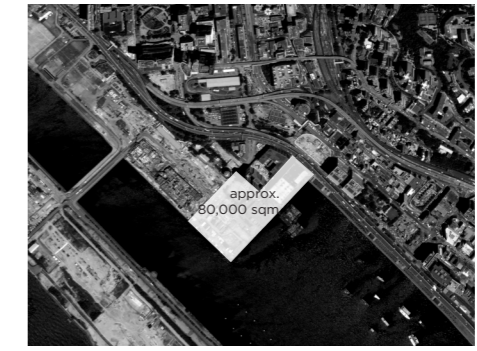
- * Victoria Harbour
- * typhoon shelter

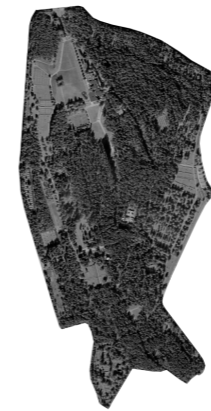
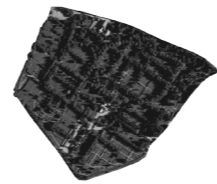
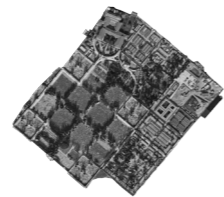
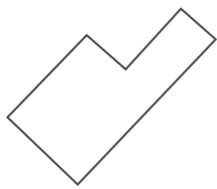
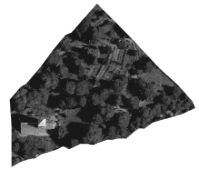


- * bridge
- * distant coastline
- * cruise terminal
- * mid-rise new developments



THE SITE | THE WATERFRONT | THE VIEW





Gamle Aker kirkegård
(Old Aker Church) Oslo

28,168 m²



Igualada Cementery
Barcelona

44,560 m²



Kai Tak Project
Hong Kong

approx. 80,000 m²



Vår Frelses gravlund
Oslo

84,856 m²



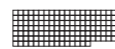
Isola di San Michele
Venice

168,680 m²



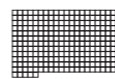
Vestre Cemetery
Copenhagen

540,000 m²



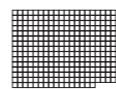
Vestre Cemetery
Oslo

980,000 m²



Woodland Cemetery
Stockholm

1,186,424 m²



SITE SIZE COMPARISON

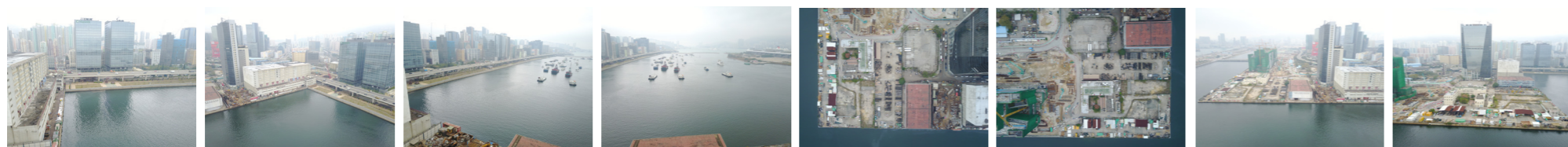
OBSERVATIONS in the middle of the site



NEIGHBOURHOOD pedestrian walkway towards the site



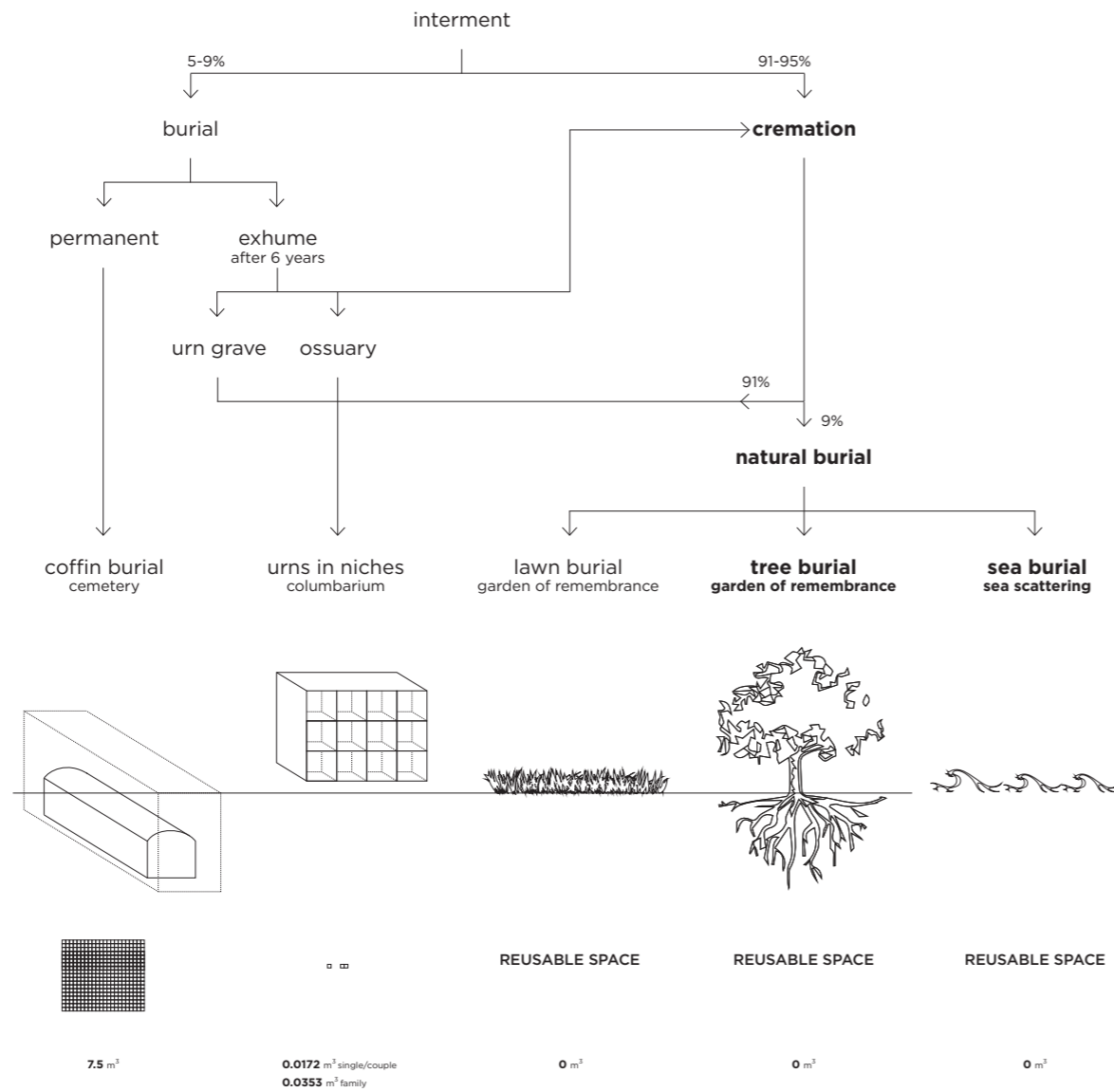
IMAGES FROM DRONE March 2017 Hong Kong



SITE VISIT FINDINGS

- 1 **noise** from highways in the north of the site
- 2 a few **existing trees**
- 3 **asphalt** road
- 4 **not as windy** as the gaps between high-rise buildings
- 5 some people **jogging**, have to find their way back to the promenade, as the existing buildings block the way
- 6 nearby : new buildings under construction
- 7 some existing buildings/structures to be removed
- 8 heavy-loaded trucks will leave together with the existing industrial buildings

NATURAL BURIAL	SCARCITY OF SPACE
JOURNEYS	LIFELESS
OPENNESS	FEAR OF DEATH
SITE CHARACTER	DISCONNECTION



DESIGN STRATEGIES
interment | scarcity of space

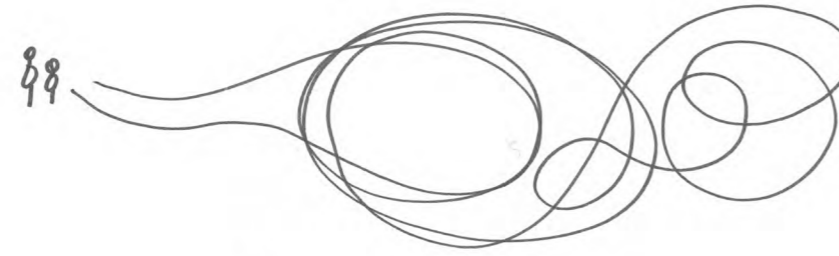
first time visitor
the bereaved



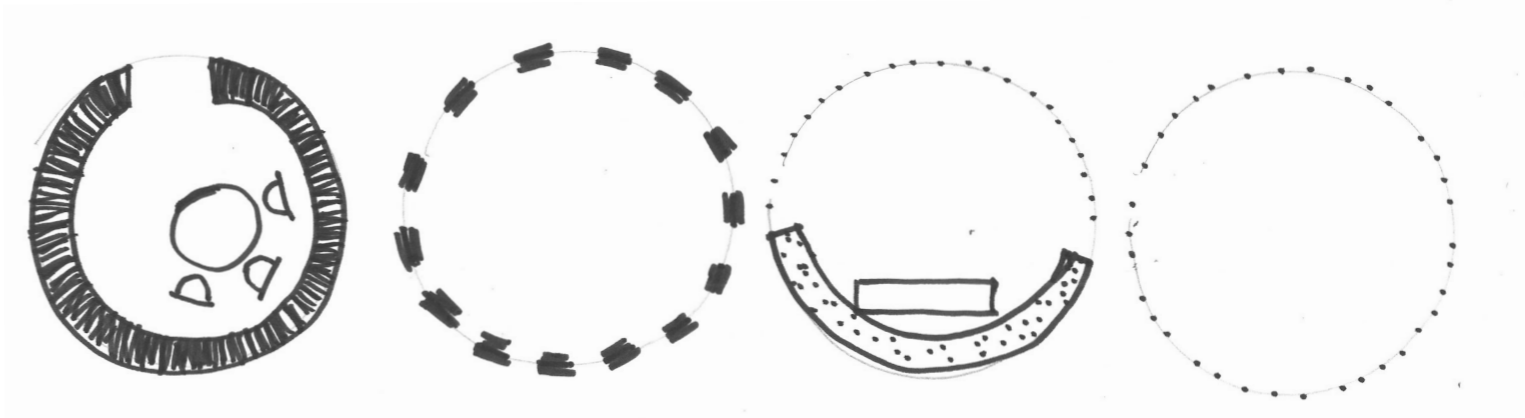
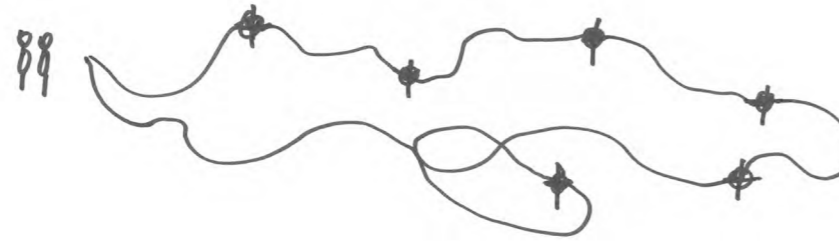
revisiting mourners



local residents



tourist
one-time visitor



room

permeable fence

semi-enclosed

open

reflect / escape

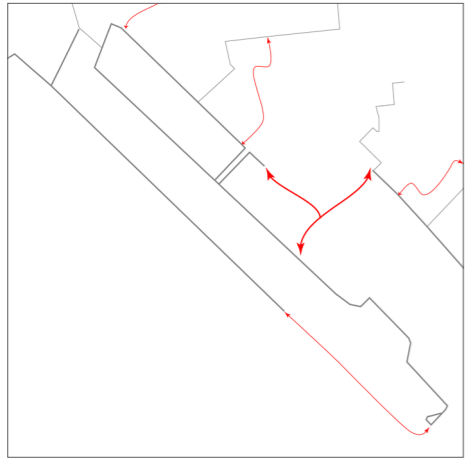
burial place

companion / gather

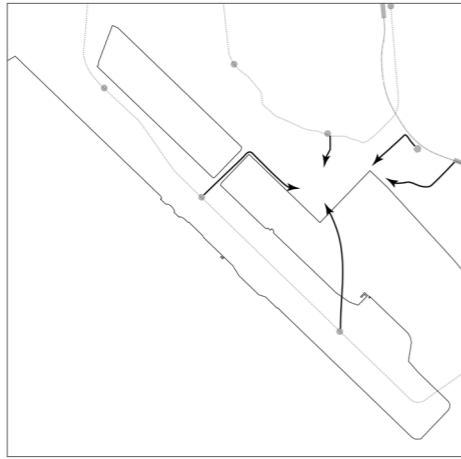
relief / leisure

DESIGN STRATEGIES

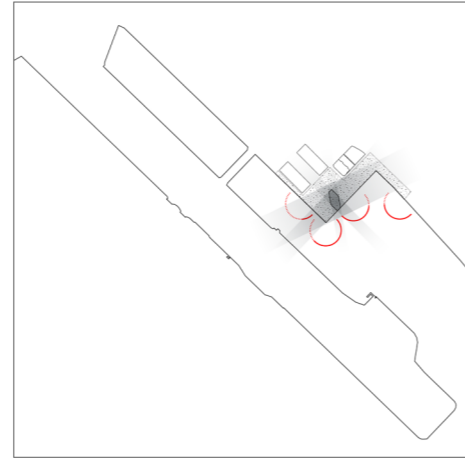
journeys | pathways | openness | privacy



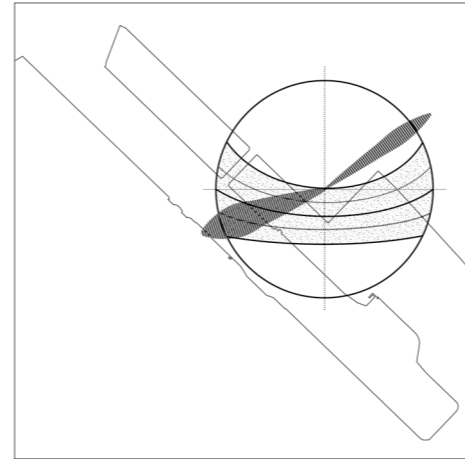
link disconnections



accessibility



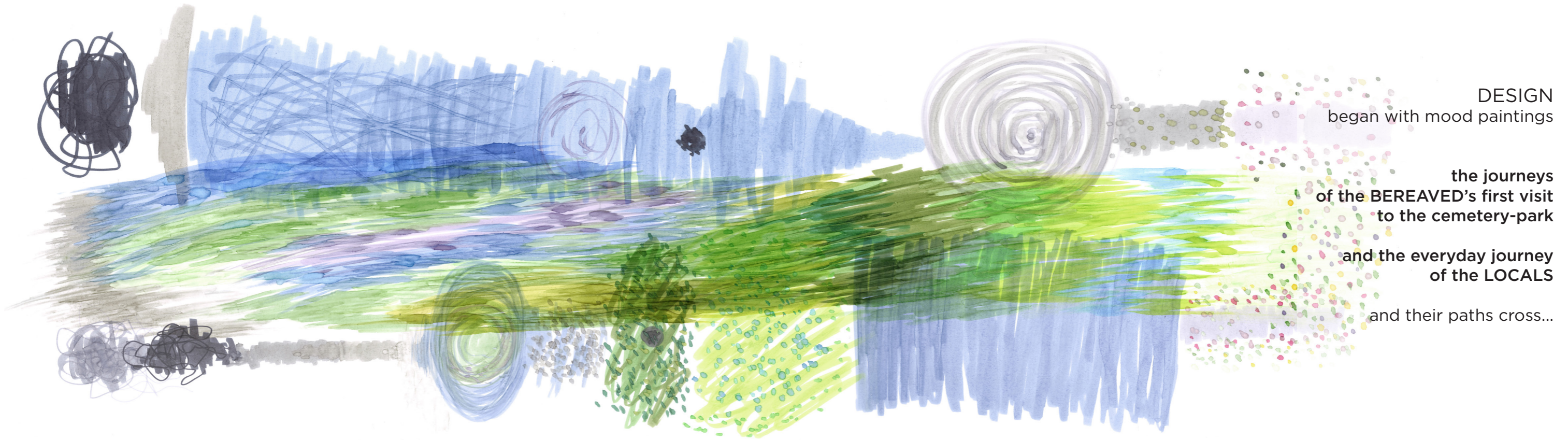
lines of sight | best view points



path of sun and wind

link disconnections | maximize site characteristics

DESIGN STRATEGIES

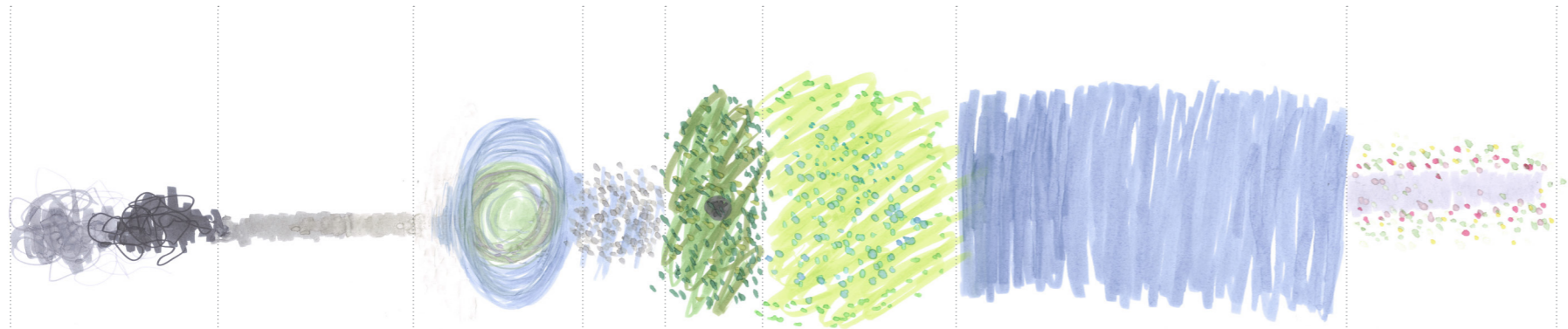


DESIGN
began with mood paintings

the journeys
of the **BEREAVED's** first visit
to the cemetery-park

and the everyday journey
of the **LOCALS**

and their paths cross...



loss
chaotic
noisy

directional
reduce
confusion
mark a passing

symbol of
hope
peaceful

embrace
sadness
solace | private
honour the
death

soothing
landscape
dialogue
interactions

escape
remember | reflection

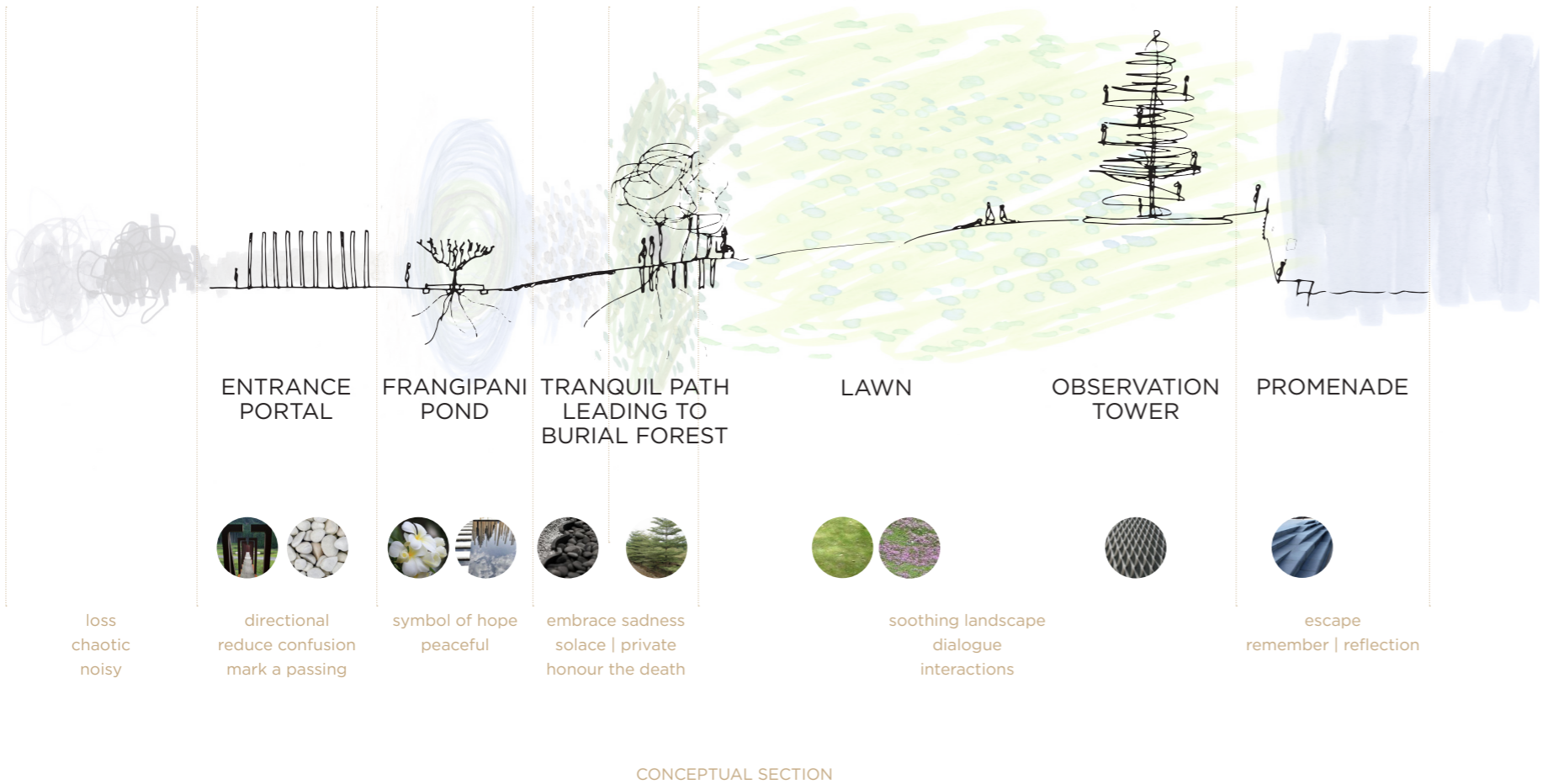
reconnect
strength
regain focus

26



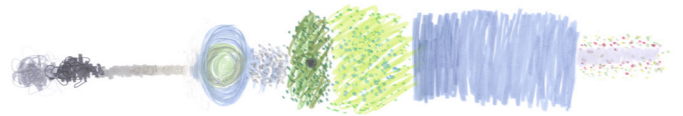
DESIGN PROCESS
mood paintings

emotion journey of the bereaved's first visit
- tree burial

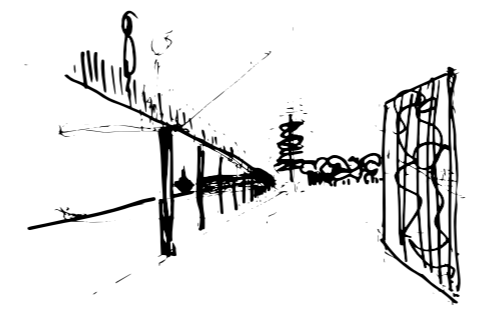
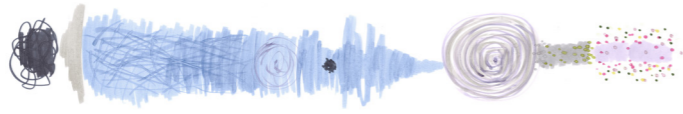


DESIGN PROCESS
**journey | conceptual section | mood
 and materials**

journey1
FIRST TIME
VISITOR
TREE BURIAL



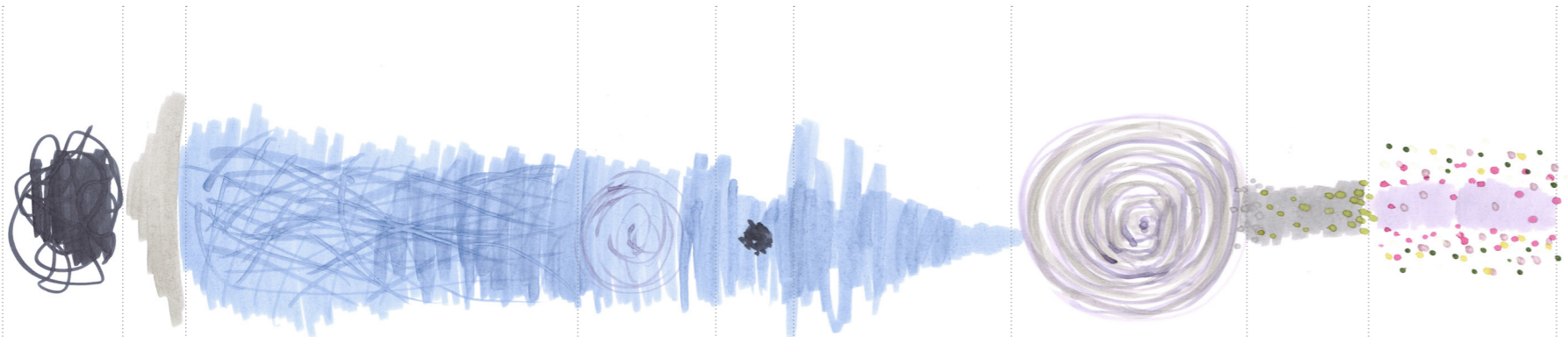
journey2
FIRST TIME
VISITOR
SEA BURIAL



journey3
LOCALS



DESIGN PROCESS
the 3 journeys | mood paintings |
conceptual sketches



loss
chaotic
noisy

directional
visible
reduce
confusion
mark a passing

set off
long journey

simple rituals
embrace sadness
solace | private

settling
accomplish
reconnect
regain focus

grounded
strength
clearness

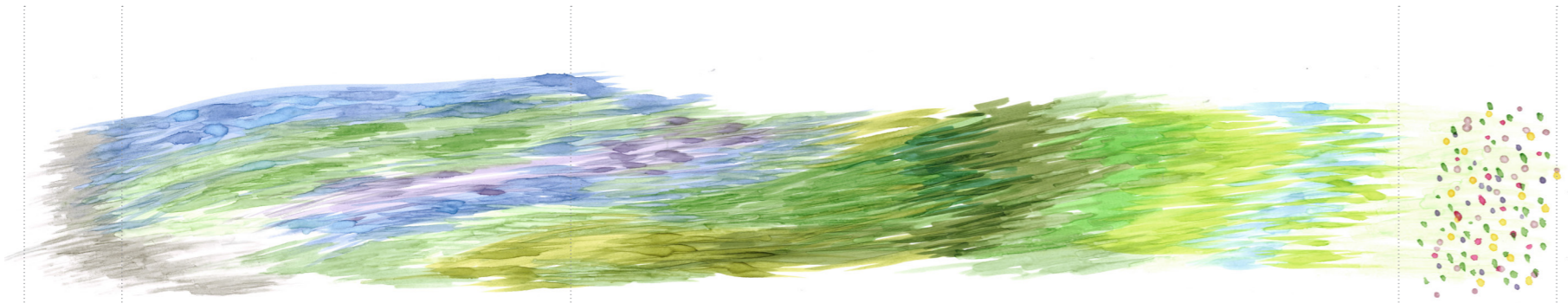
remember
reflection

soothing
encouraging



DESIGN PROCESS
mood paintings

emotion journey of the bereaved's first visit
- sea burial



chaotic
noisy

gorgeous harbourfront
enjoy sea breeze
embrace the nature

lush greenery
relaxing landscape
trees and shades
lawns and activities

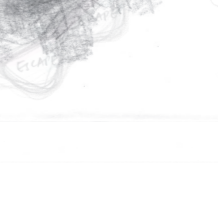
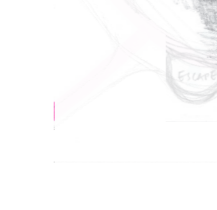
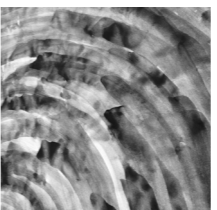
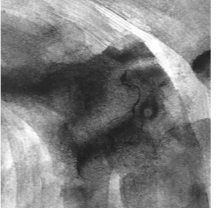
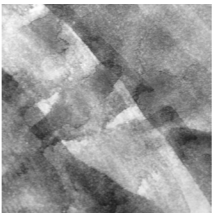
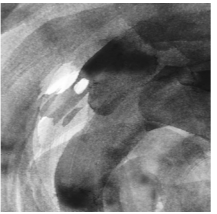
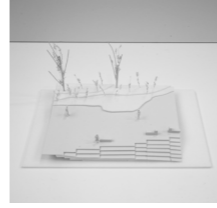
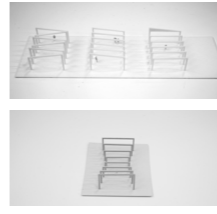
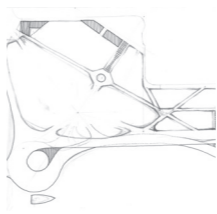
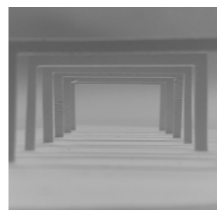
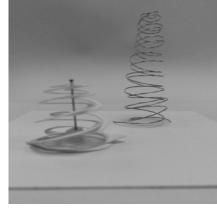
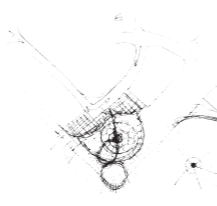
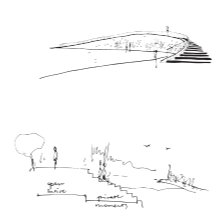
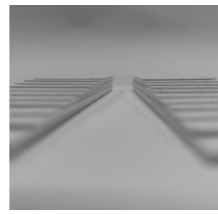
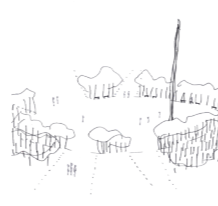
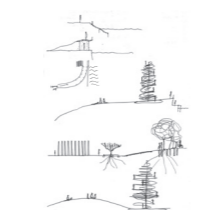
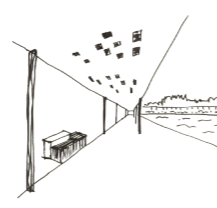
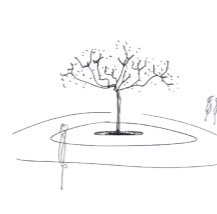
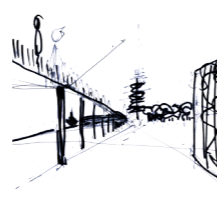
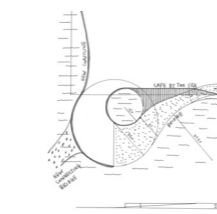
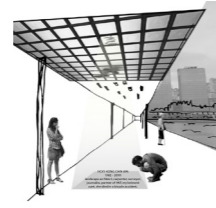
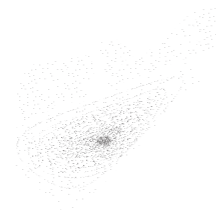
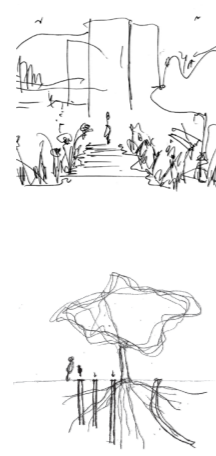
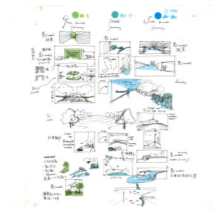
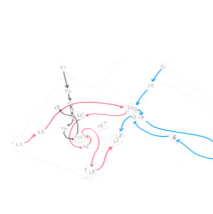
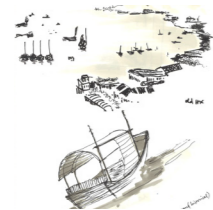
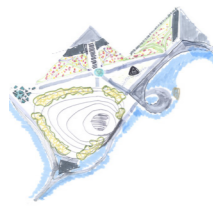
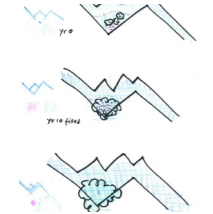
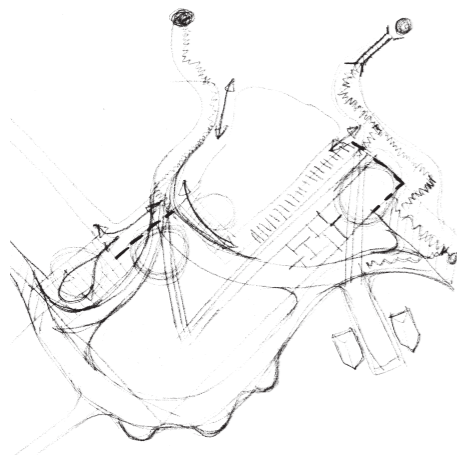
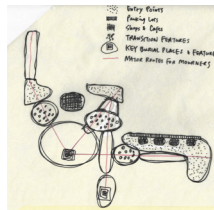
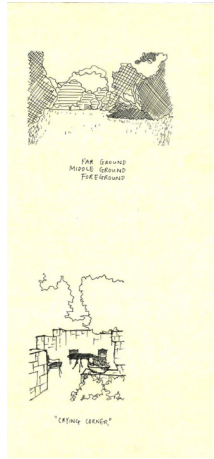
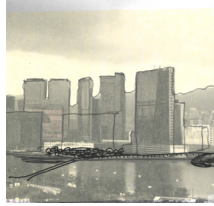
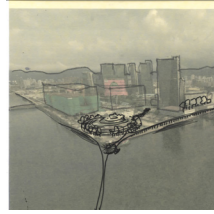
adorable
flowers
strength
encouraging

30



DESIGN PROCESS
mood paintings

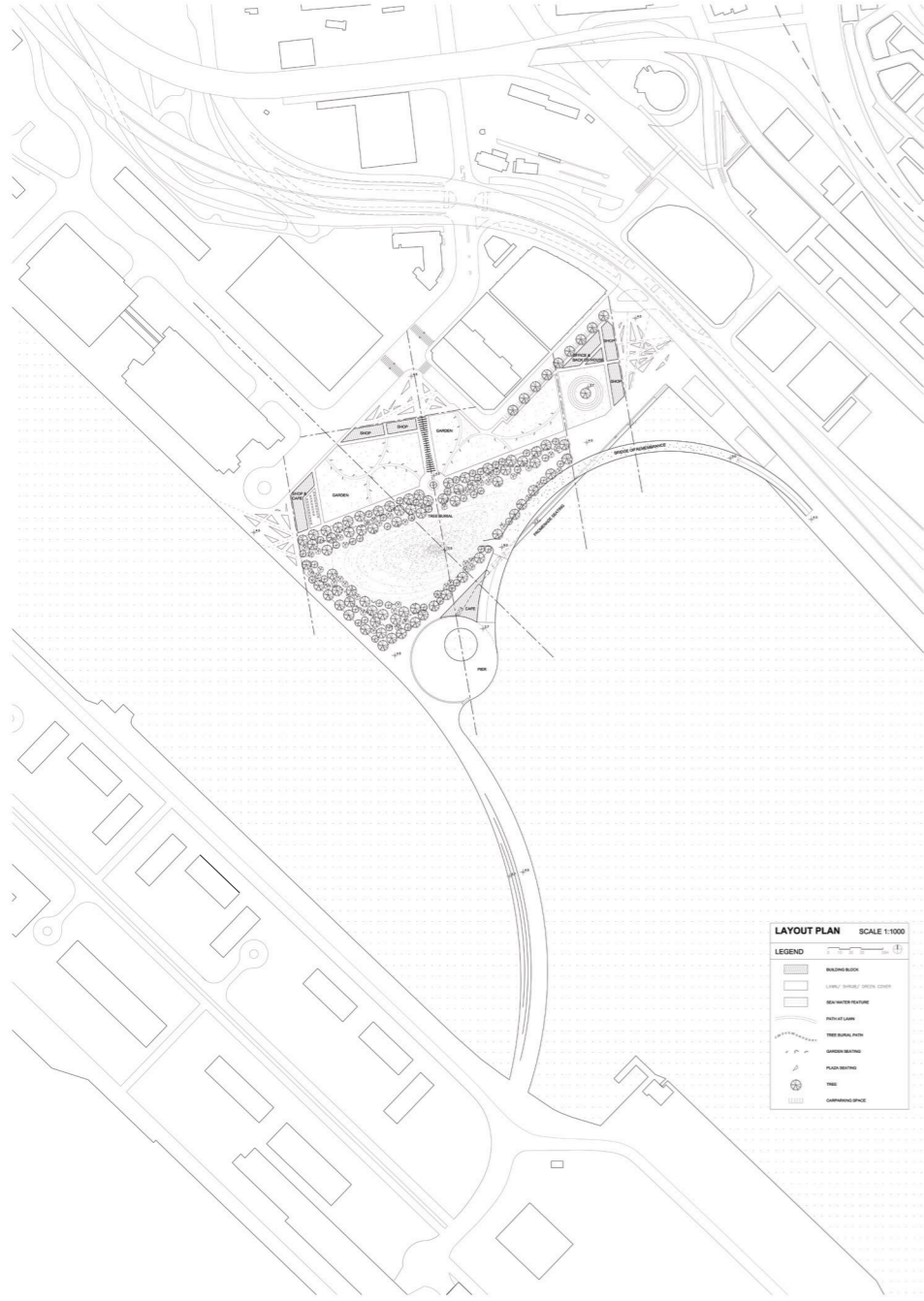
emotion journey of the locals



DESIGN PROCESS



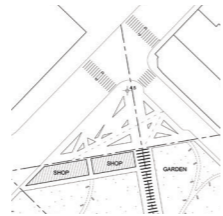
Intricate End of first-time visit route



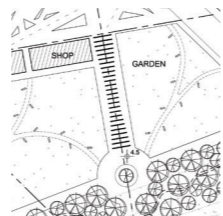
LAYOUT PLAN SCALE 1:1000

LEGEND

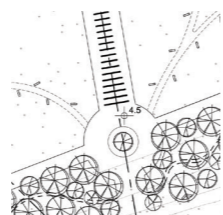
- BUILDING BLOCK
- LAWN/ SHRUB/ GROUND COVER
- WATER FEATURE
- PAVED LAWN
- TREE BURIAL PATH
- SHADOW BUILDING
- TREE
- HILL
- CAMPING SITE



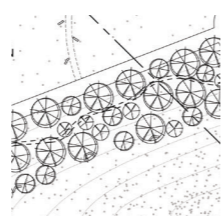
Entrance Plaza
[Tree Burial]



Portal



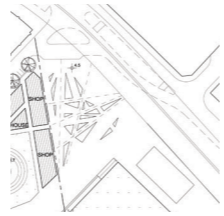
Frangipani
Pond



Tree Burial
Forest & Lawn



Meditating
Hillock



Entrance Plaza
[Sea Burial]



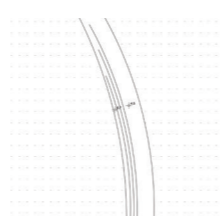
Bridge of
Remembrance



Promenade
Seating



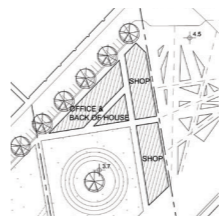
Pier
[Sea Burial]



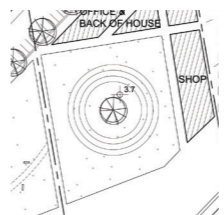
Connecting
Bridge
[to Kai Tak
runway]



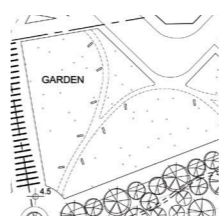
Tree-shade
Parking



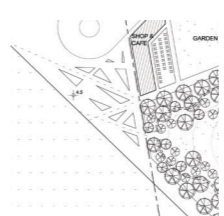
Shops [Florist]
Cafes, Offices
Back of House
Incinerators
for sacrifice/
incense



Flower Offering

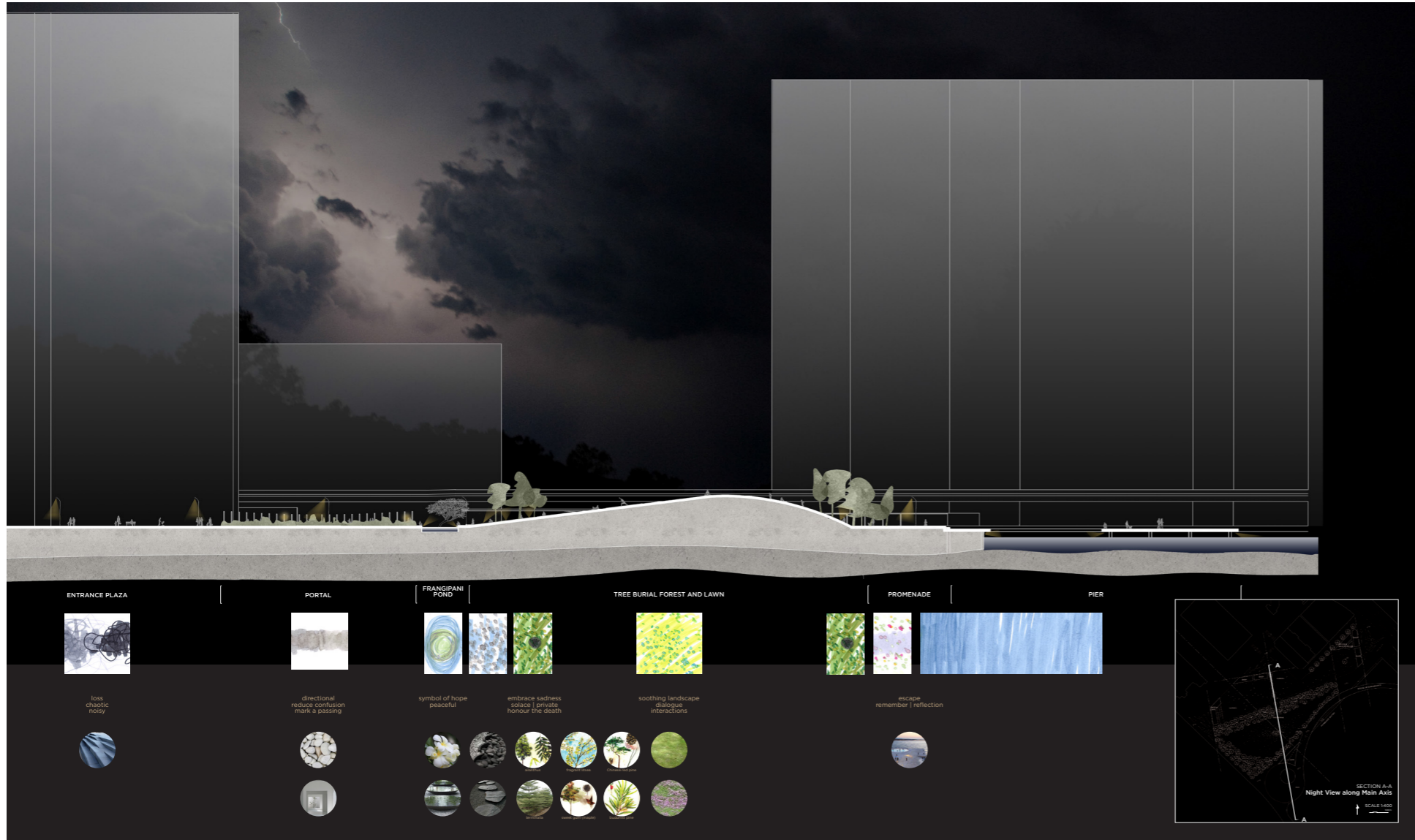


Gardens



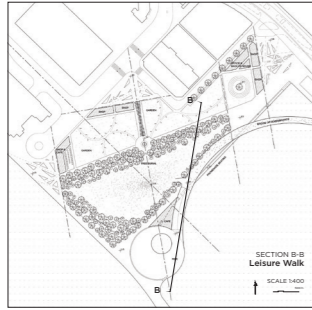
Promenade
Entrance
Plaza

MASTER LAYOUT PLAN



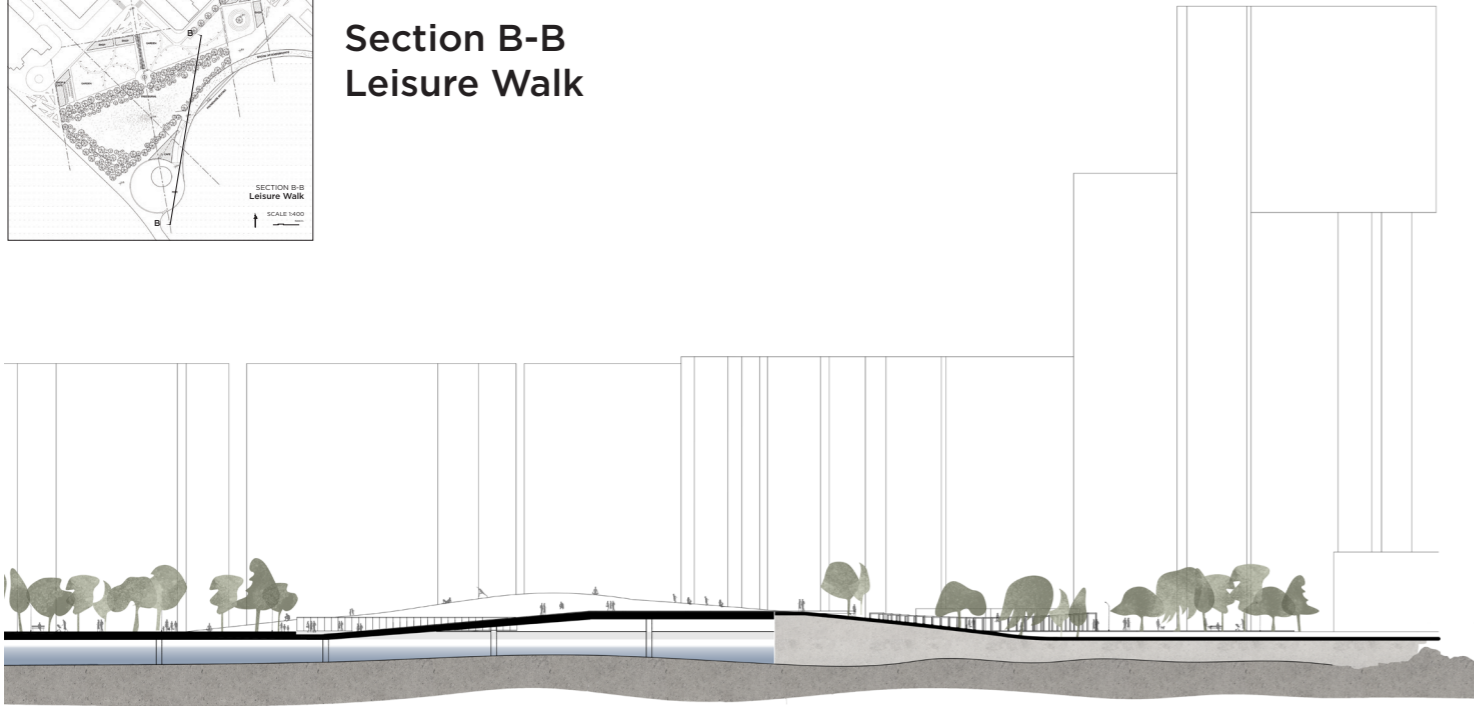
SECTIONS

Section A-A
Night View along Main Axis



SECTIONS

Section B-B
Leisure Walk



PROMENADE

CAFE

BRIDGE OF REMEMBRANCE

TREE BURIAL FOREST AND LAWN

GARDEN



gorgeous harbourfront
enjoy sea breeze
embrace the nature



lush greenery
relaxing landscape
trees and shades
lawns and activities

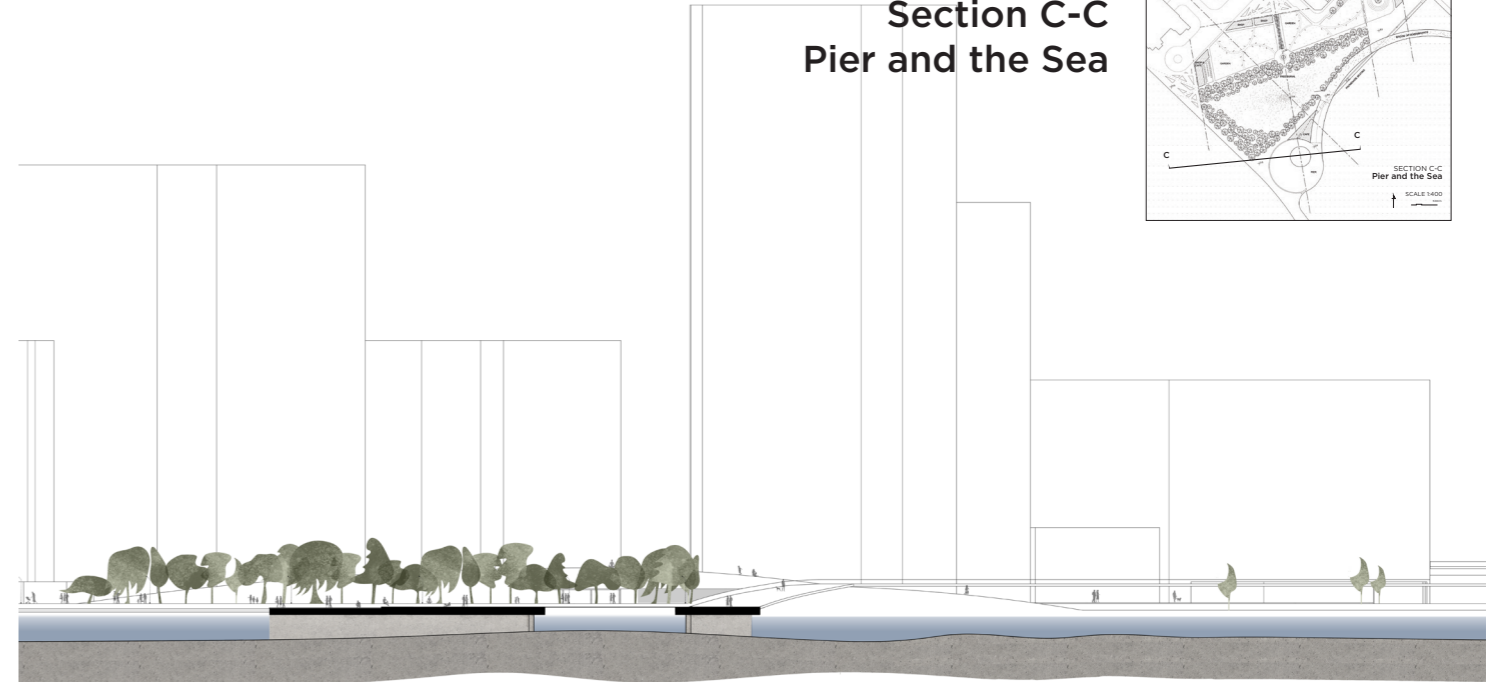


adorable flowers
strength
encouraging



SECTIONS

Section C-C
Pier and the Sea



PROMENADE

PIER

BRIDGE OF REMEMBRANCE

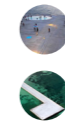
WATERS



soothing
encouraging



grounded
strength
clearness

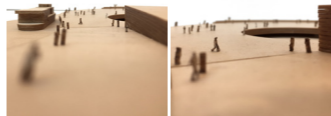
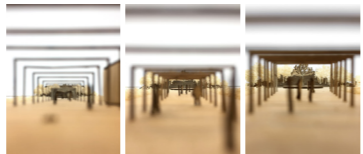
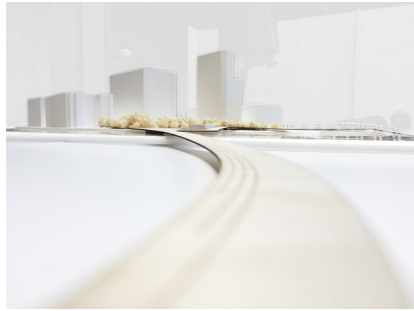
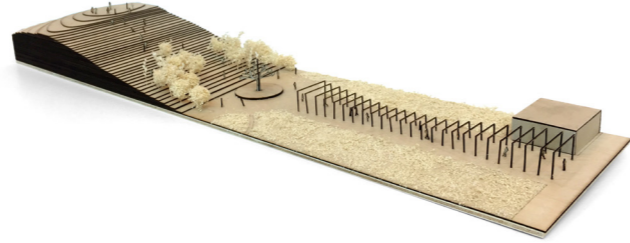
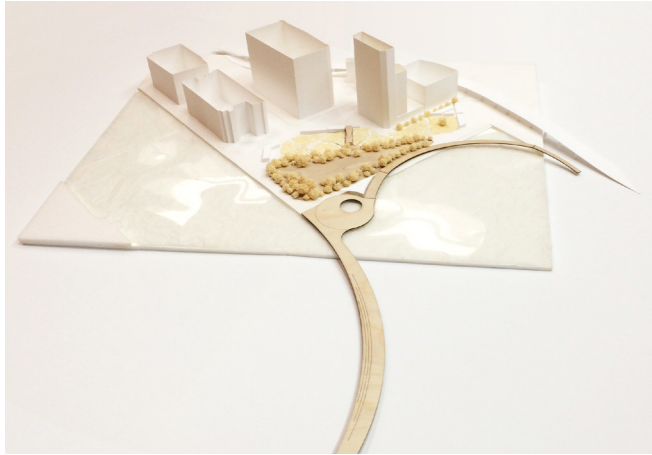


remember
reflection

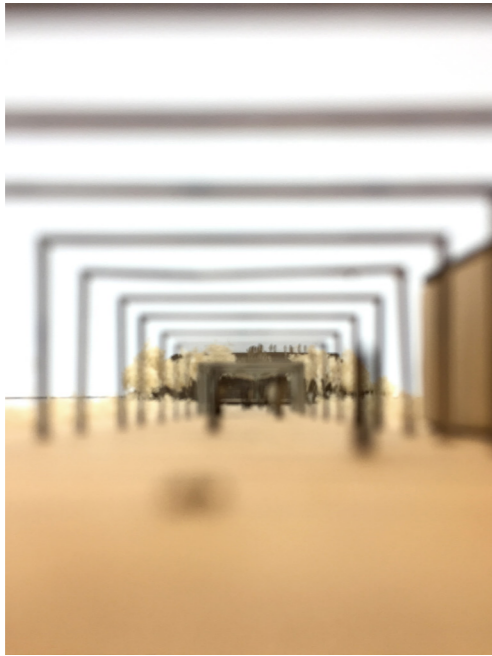


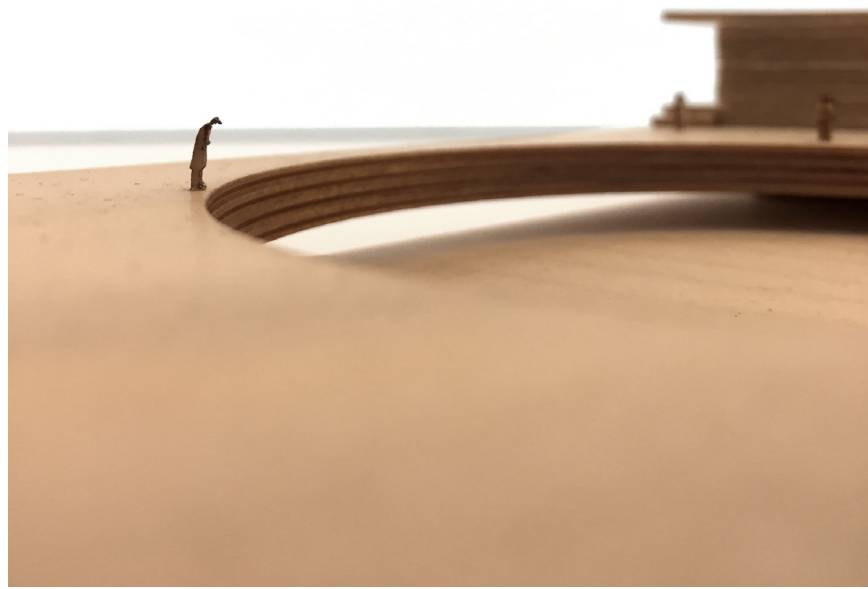
settling
accomplish
reconnect
regain focus

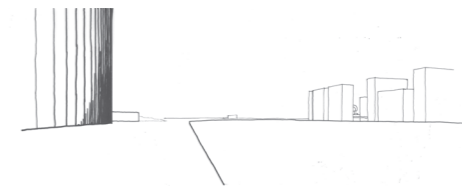
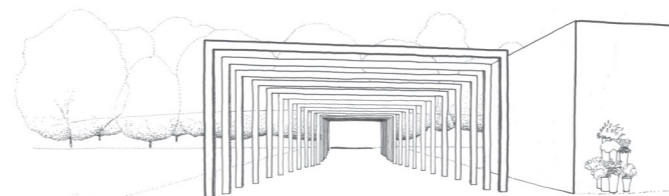
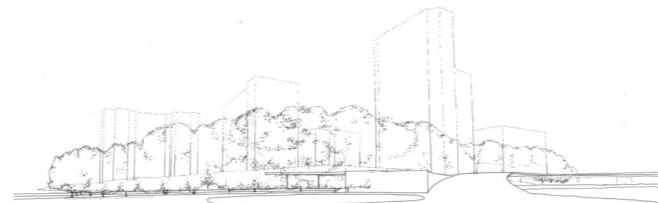
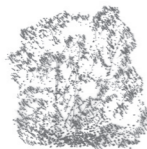
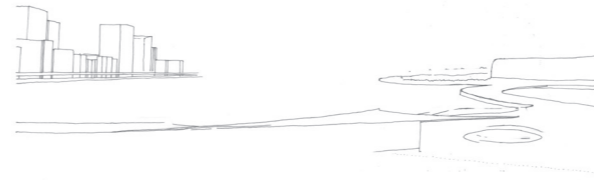
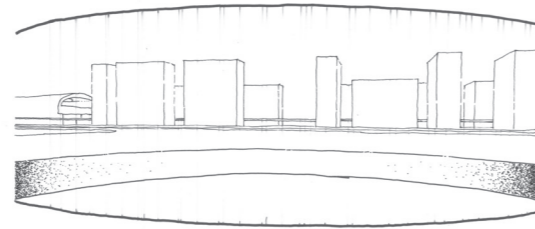
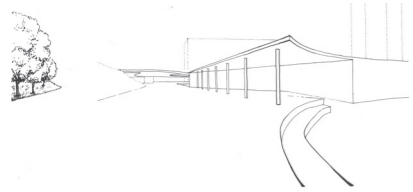
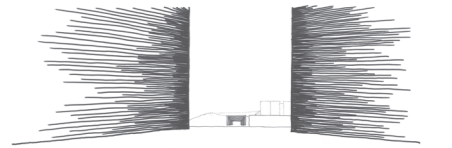
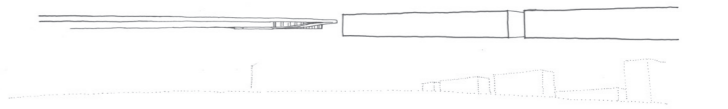
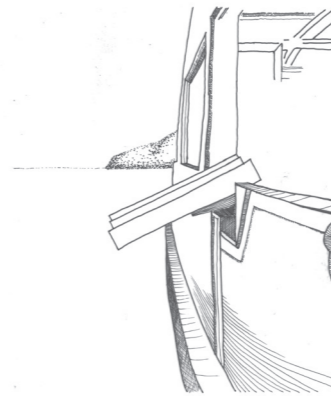
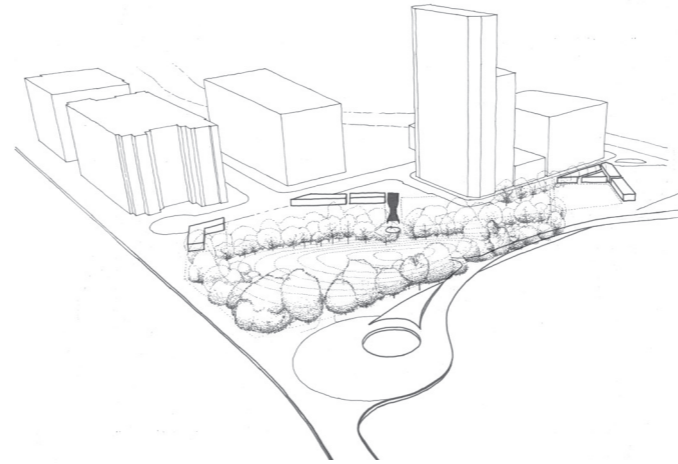
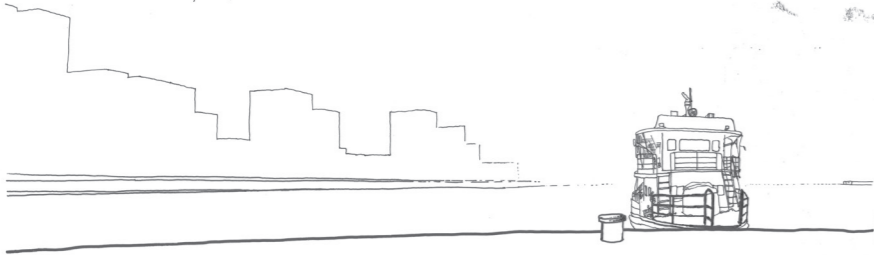
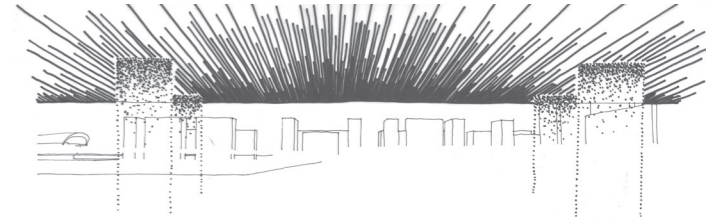
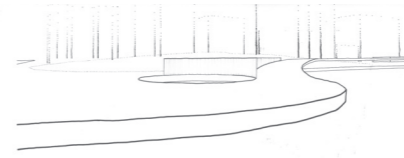
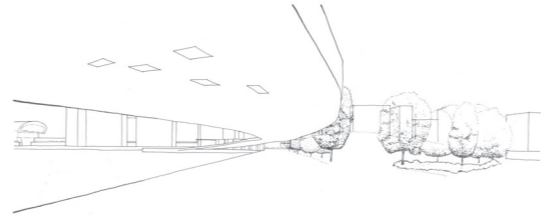
MODELS





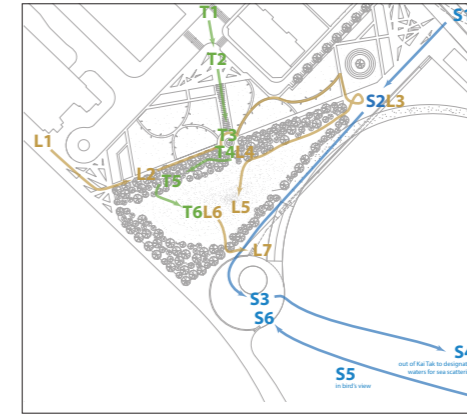


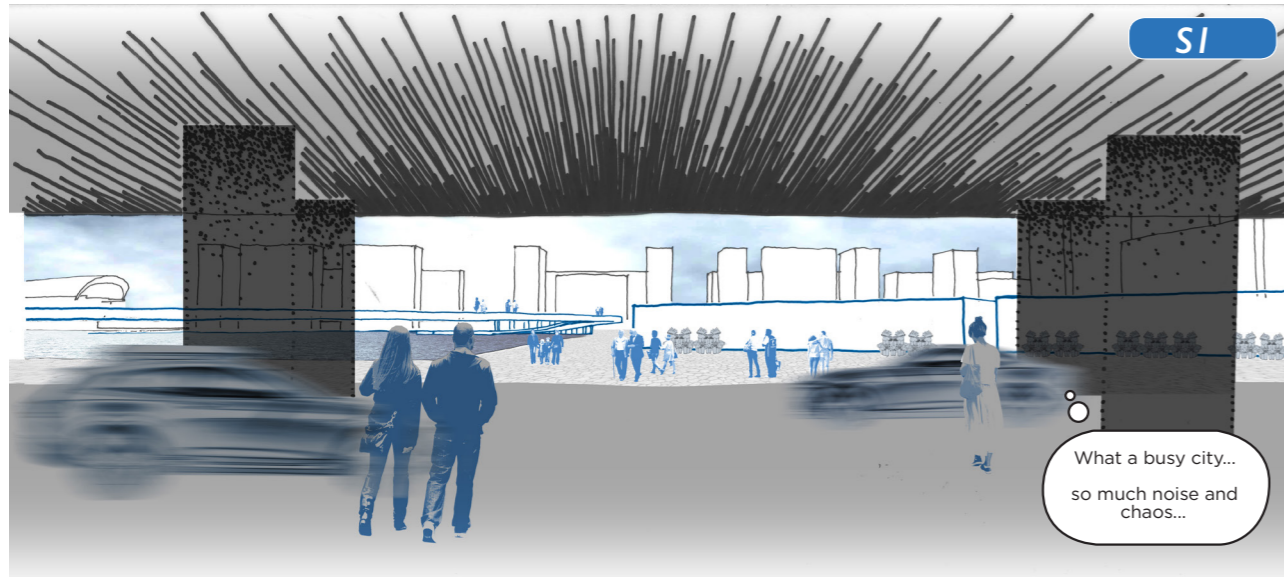
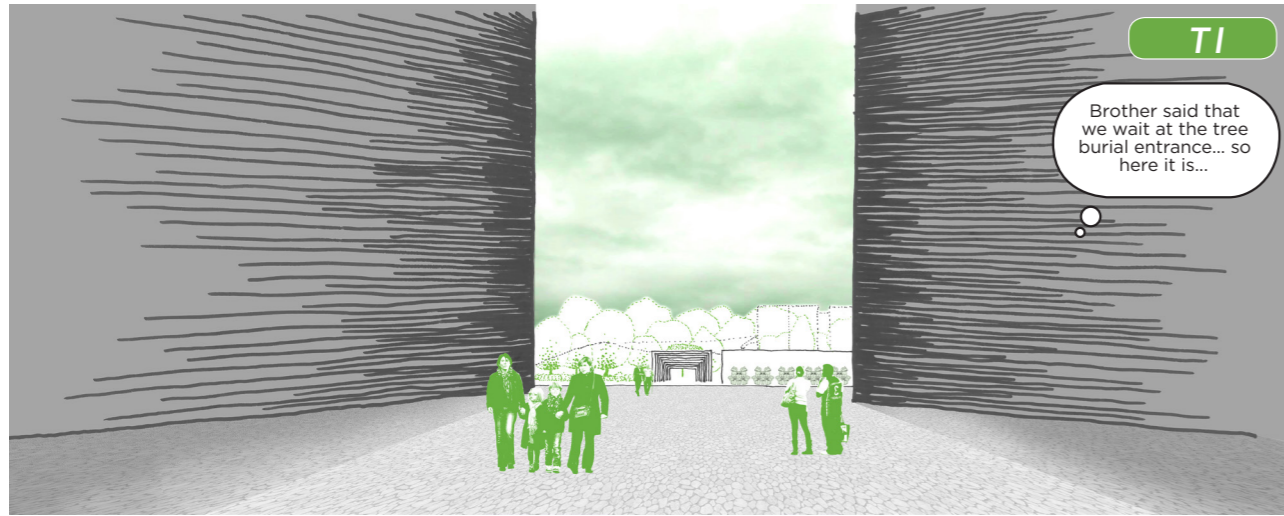




JOURNEYS OVERVIEW

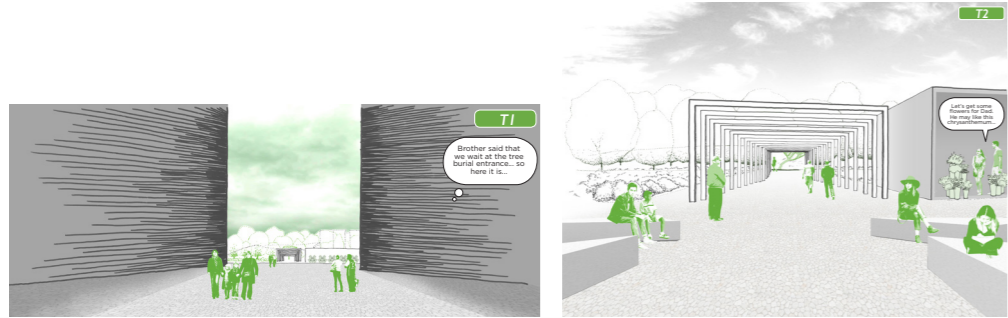
tree burial
sea burial
local
intersections





ENTRANCES

... get prepared to leave the concrete jungle



JOURNEY OF THE BEREAVED'S
FIRST VISIT
TREE BURIAL

entrance gateway
frangipani pond
tree burial forest





TREE BURIAL
 Cremated ashes are sent to the roots of the trees through pre-cast tubes embedded around the designated trees. Cover plates of the tubes are marked with index numbers.

Goodbye Dad...

T5

tree burial forest

pre-cast tubes
 embedded in soil
 for sending cremated
 ashes down to the roots



T6/L6

I couldn't imagine we can bring our dog to a "cemetery".

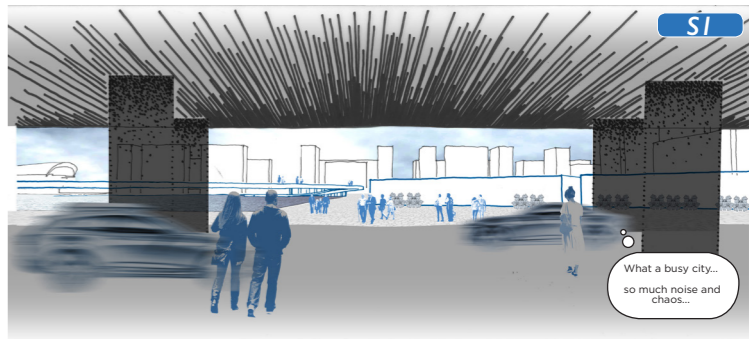
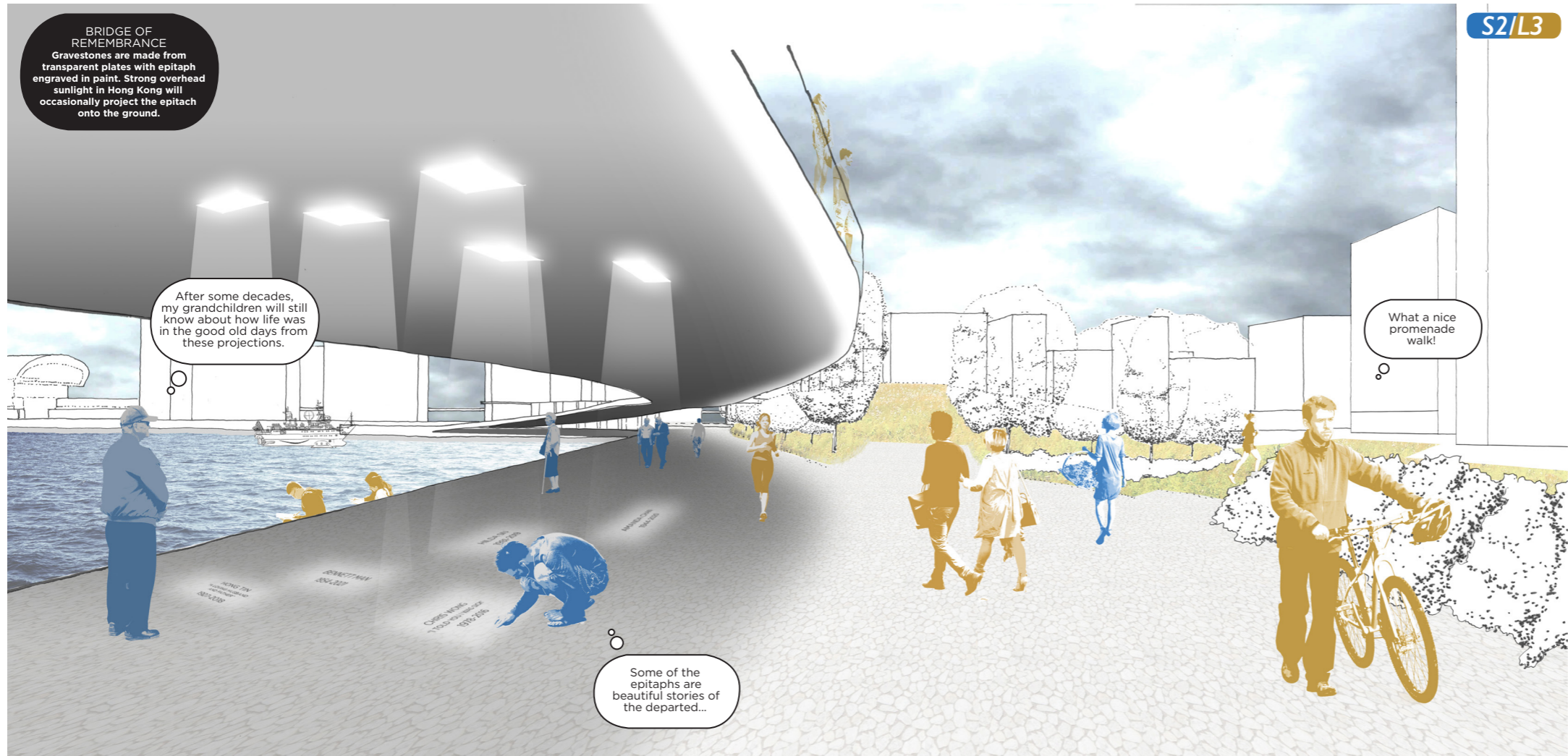
Yes, because the ashes are deep in the soil. Nothing can be dugged out. This makes the park 24-7 too.

What do you prefer, sit under tree shade or lie down, or keep walking?

I don't know... Maybe it's good to lie down here... together with other people.

How do you find this park? I told you it doesn't look like a cemetery. See?

Yes, it's just like a park. Any park. No scary dark corners, unlike traditional columbariums...

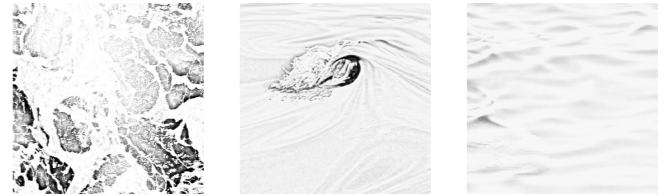
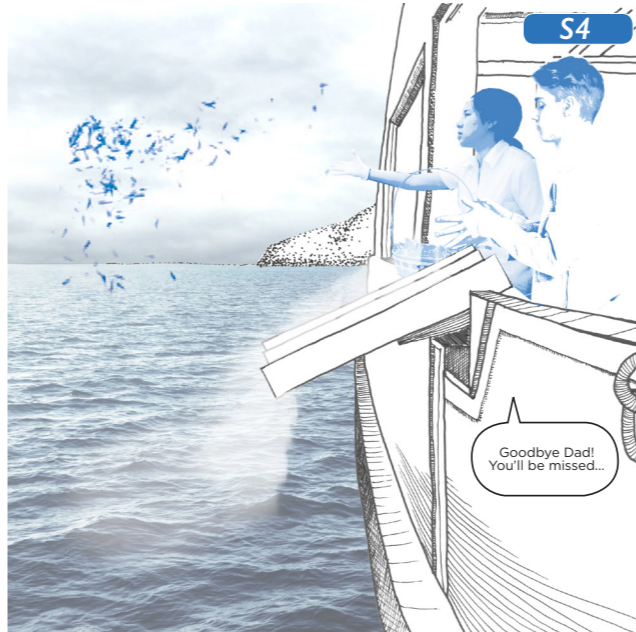


JOURNEY OF THE BEREAVED'S
FIRST VISIT
SEA BURIAL

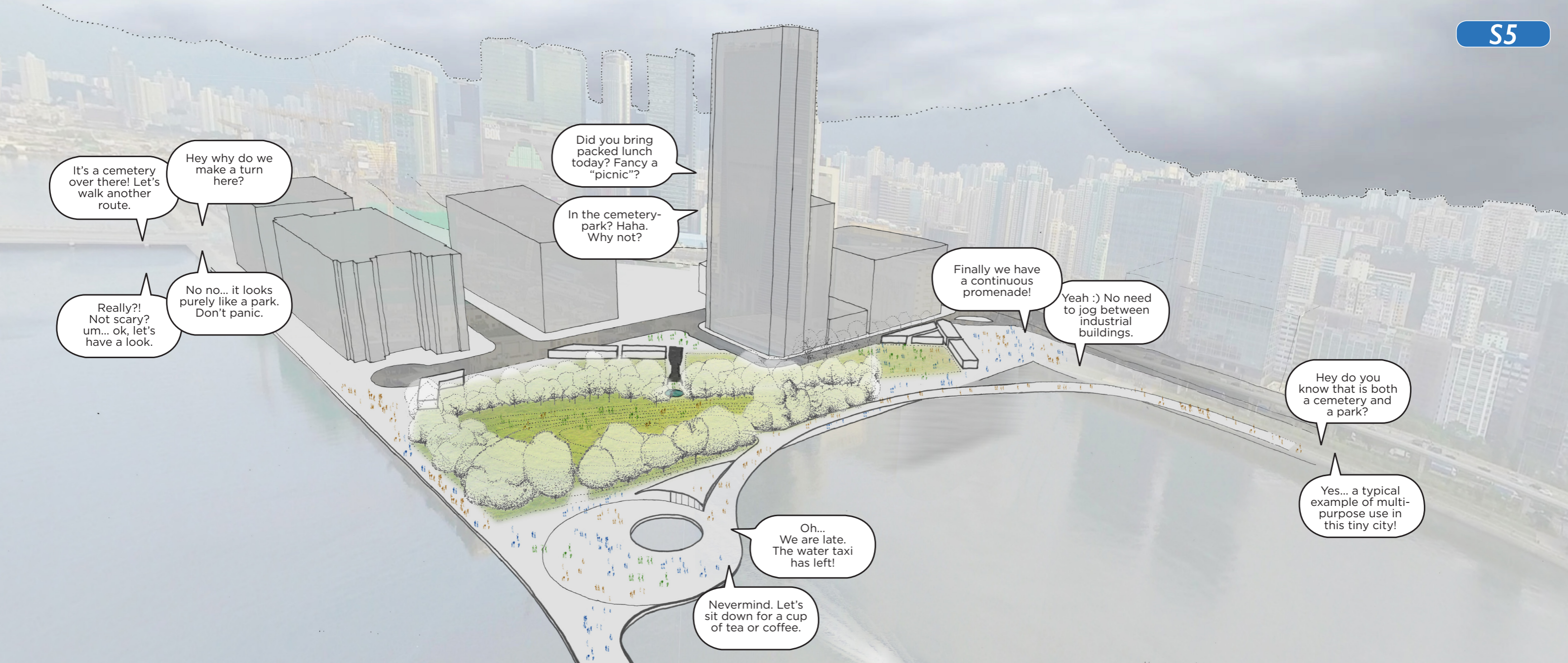
Bridge of Remembrance

Projection of epitaph
as if puzzle pieces
demonstrating social
and cultural anthropology

depart for sea burial
at designated waters



returning and get grounded



It's a cemetery over there! Let's walk another route.

Hey why do we make a turn here?

Really?! Not scary? um... ok, let's have a look.

No no... it looks purely like a park. Don't panic.

Did you bring packed lunch today? Fancy a "picnic"?

In the cemetery-park? Haha. Why not?

Finally we have a continuous promenade!

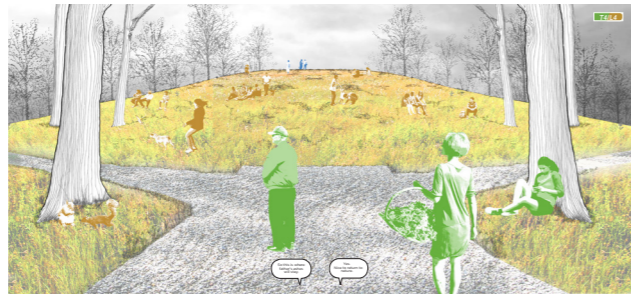
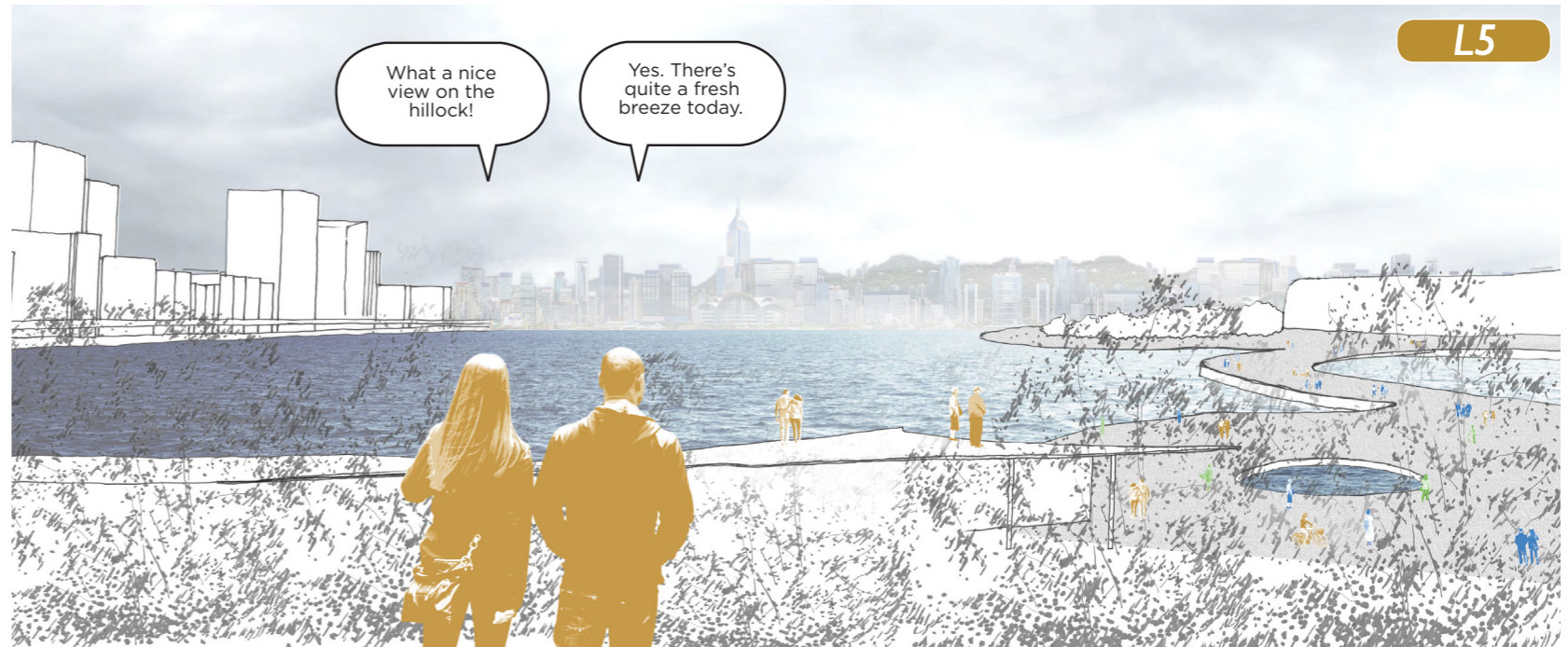
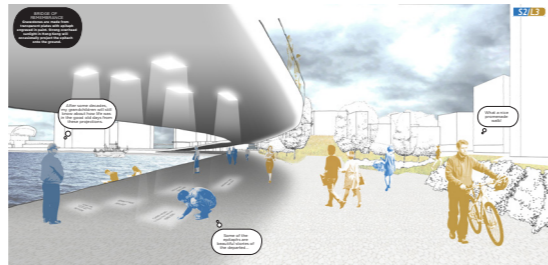
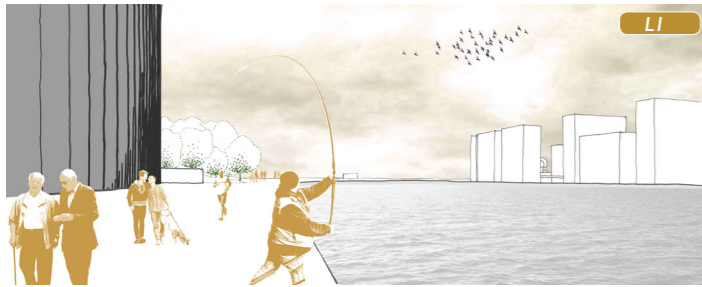
Yeah :) No need to jog between industrial buildings.

Hey do you know that is both a cemetery and a park?

Yes... a typical example of multi-purpose use in this tiny city!

Oh... We are late. The water taxi has left!

Nevermind. Let's sit down for a cup of tea or coffee.



JOURNEY OF LOCALS

walk under shades
view point over the harbour
picnic on the lawn
tea at the cafe by the pier

An aerial photograph of a cemetery, showing various burial plots and paths. The image is in black and white, with a central text overlay. The text is arranged in two columns, with the first column on the left and the second column on the right. The text is in a clean, sans-serif font, with some words in a larger font size than others. The background shows a mix of dark and light areas, representing different types of burial plots and paths.

PROJECT VISION

life

east

intimate resting forest

mourners

notable burials

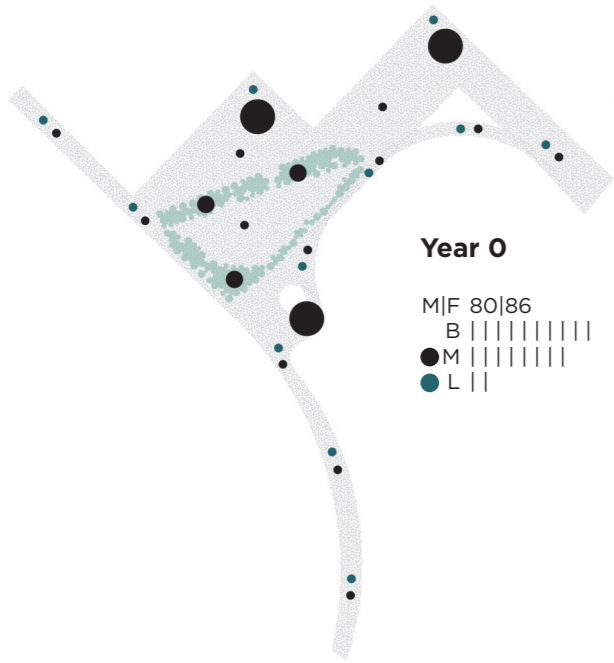
death

west

park of openness

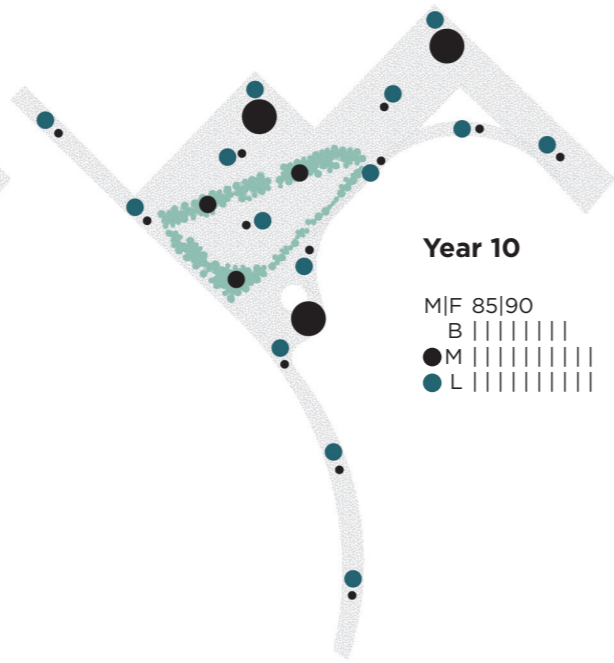
locals

memories of an era



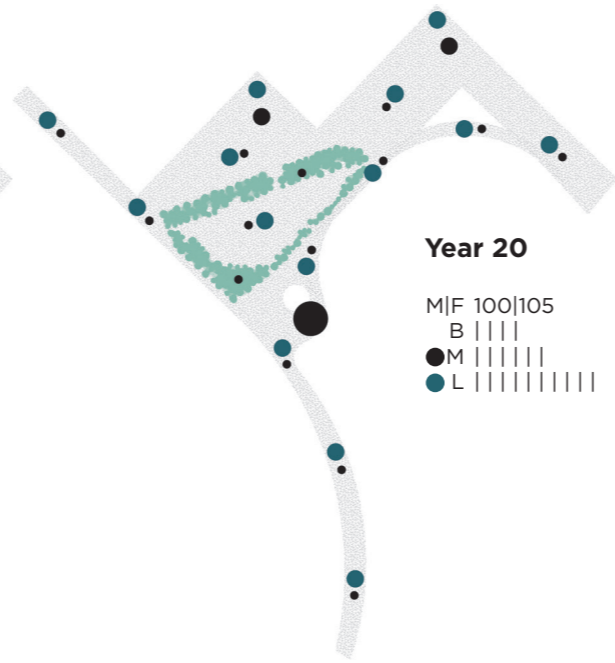
THE FIRST CEMETERY-PARK IN HONG KONG

public acceptance to grow gradually, yet to improve as they generally try to avoid interactions with mourners especially in the burial forest and pier. mourners use certain spaces for chats and relief.



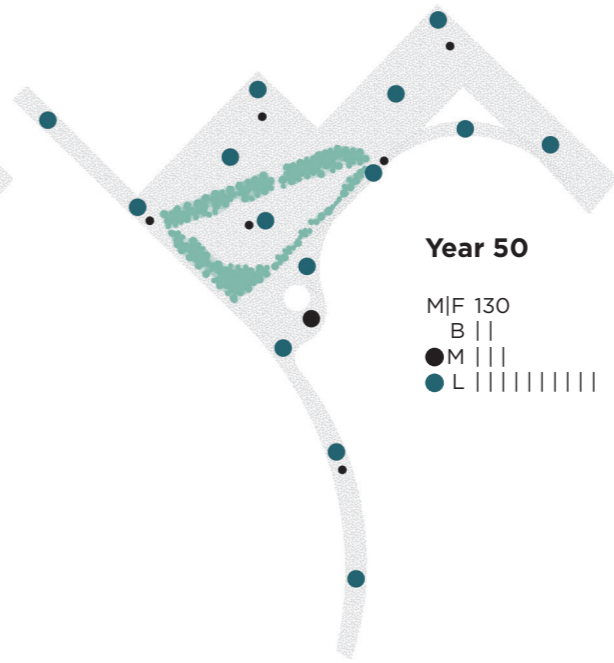
PUBLIC ACCEPTANCE

the public will not avoid any corner of the cemetery-park. revisiting mourners enjoy, enter and exit through different options of routes. they see the growth of the forest, the life of certain specific trees.



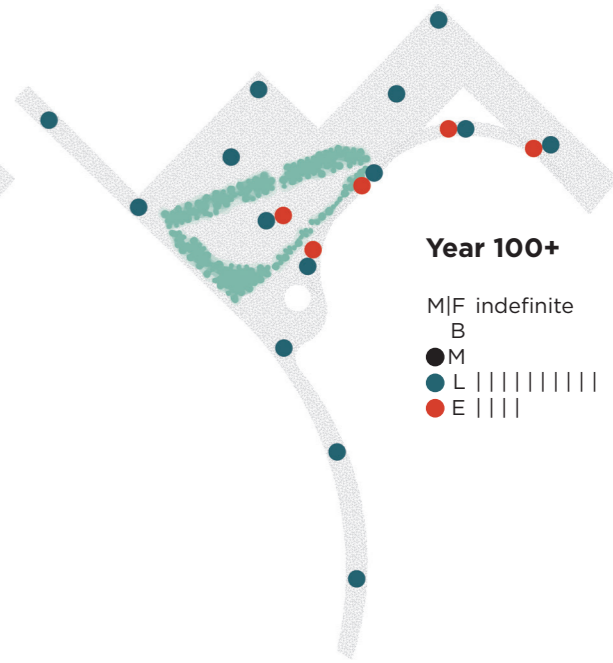
GRAVESTONES FULLY OCCUPIED

number of burials reduced as the epitach spaces get full, so is the number of mourners. the cemetery-park is more heavily used by locals.



BURIAL FUNCTION DIMINISHING

the departed who wish to remain anonymous are still buried here but the cases are few. friends and relatives of the buried also die therefore less mourners visit the park.

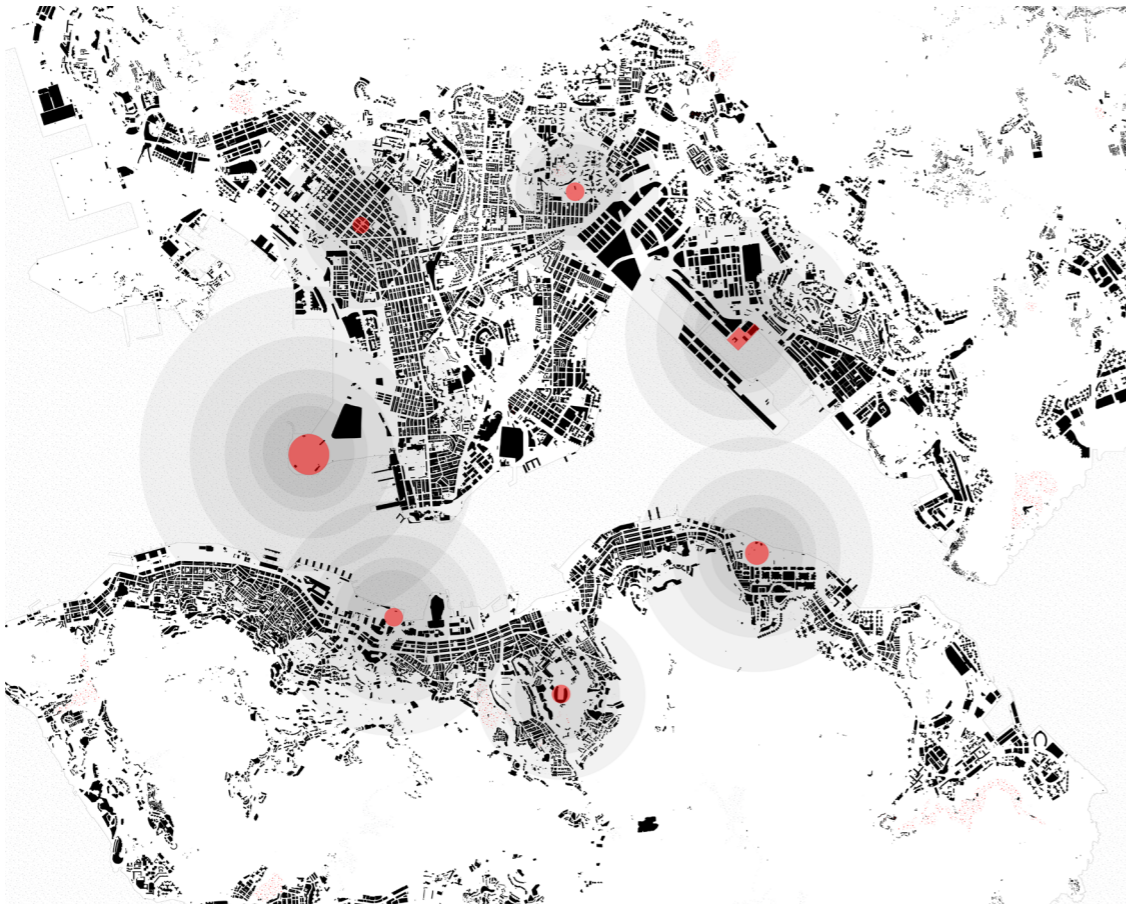


NOBODAY DIES AS TECHNOLOGY ADVANCES

artificial organs, sophisticated transplants technology make people live forever. burial becomes a history. epitach becomes the history book recording the life and memories of an era.

M|F Life expectancy [Male|Female]
 B Burial
 M Mourners
 L Locals
 E Education

PROJECT VISION
evolution of the cemetery-park



PROJECT VISION

prototype | development | extension

This prototype of the cemetery-park concept in Hong Kong not only serves its primary goals of fighting fear against death and providing emotive spaces for catharsis, but also solves the severe deficiency for burial space in Hong Kong.

The government announced in 2010 that the 18 administrative districts in the territory would collectively share the responsibility of developing district-based columbarium facilities and subsequently proposed 24 potential sites. However, slow and bureaucratic implementation, local community resistance and tedious technical assessments do not favour the increase of the supply to meet the urgent needs.

The extension of the cemetery-park concept to other urban areas in Hong Kong will ease the high demand in the era of scarcity of land, and more importantly, create an intangible synergy to gradually change the conservative taboo against death and open a new chapter of life and death education for the betterment of Hong Kongers.