

LOW PITCH



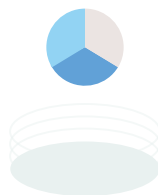


*Corvus corone*  
(Carrion Crow)

*size* 45-47cm

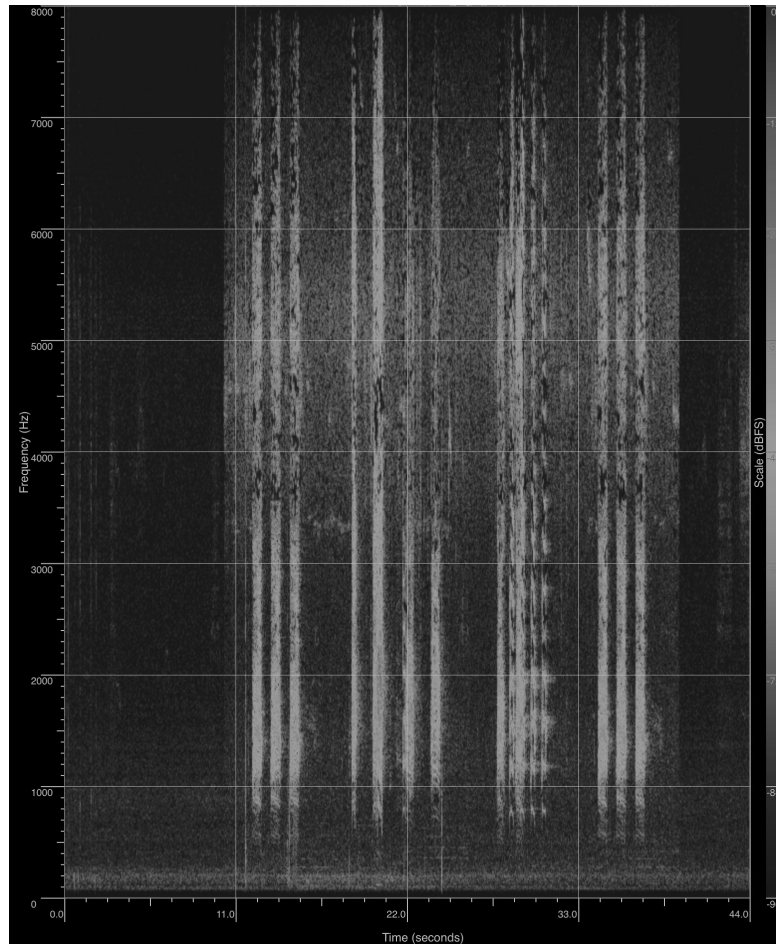
*season* JAN FEB MAR APR MAY JUN JUL AUG SEP OCT NOV DEC(\*full migrant)

*systems*



*layer of habitat*

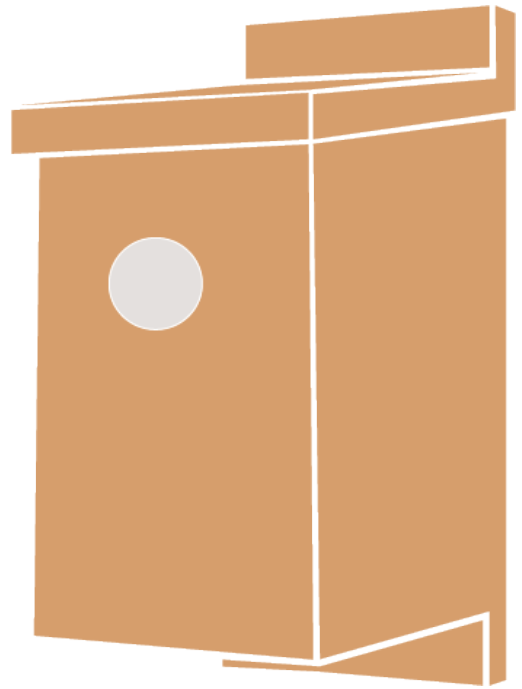
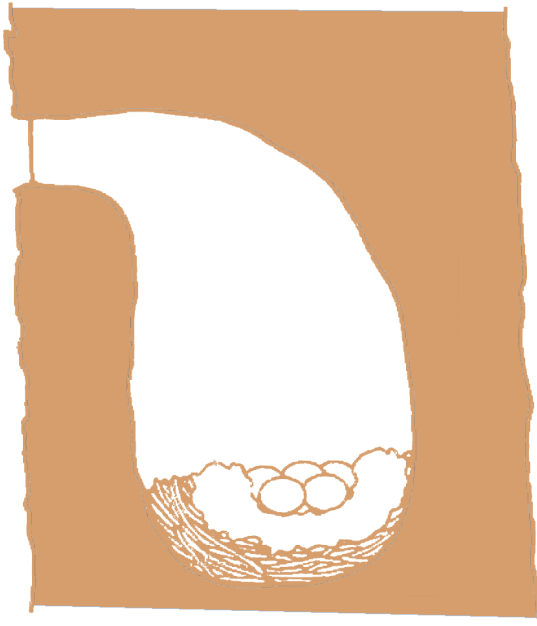




Low Pitch

“arrrrh arrh arrrh(i made it up)”

Clear



Found tree house. Bird box (Diameter of entrance: 1-2 inches)



*Dryocopus martius*  
(Black Woodpecker)

*size*

45-57 cm

*season*

JAN FEB MAR APR MAY JUN JUL AUG SEP OCT NOV DEC

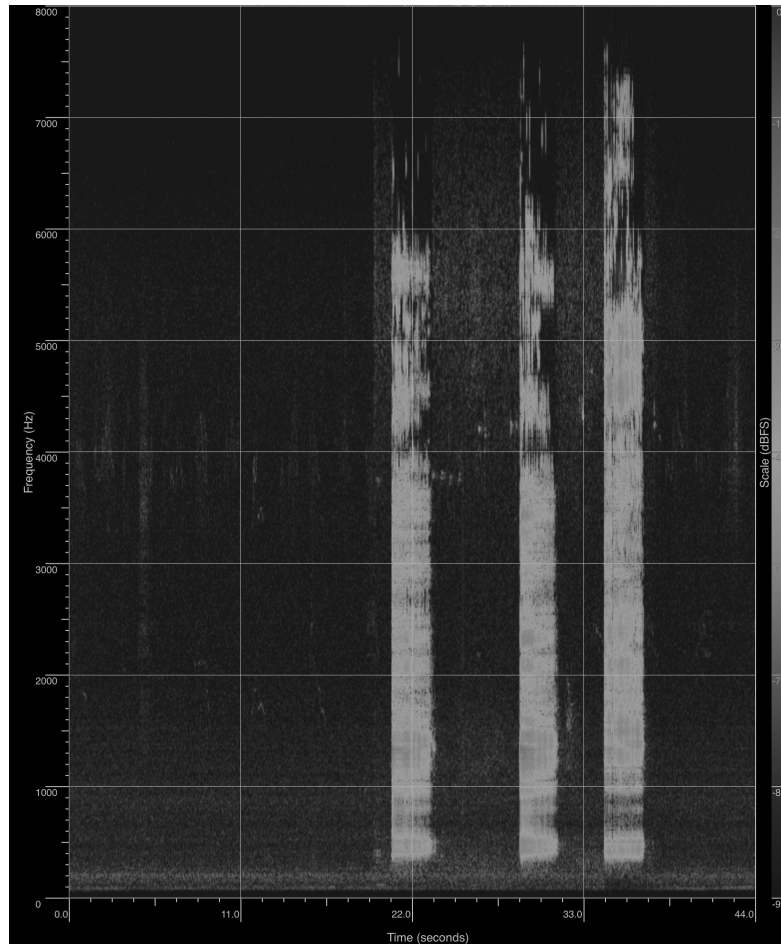
*systems*



*layer of habitat*



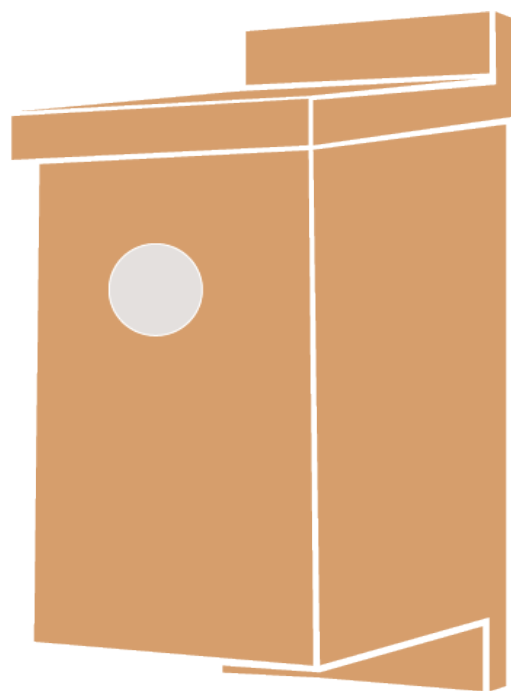
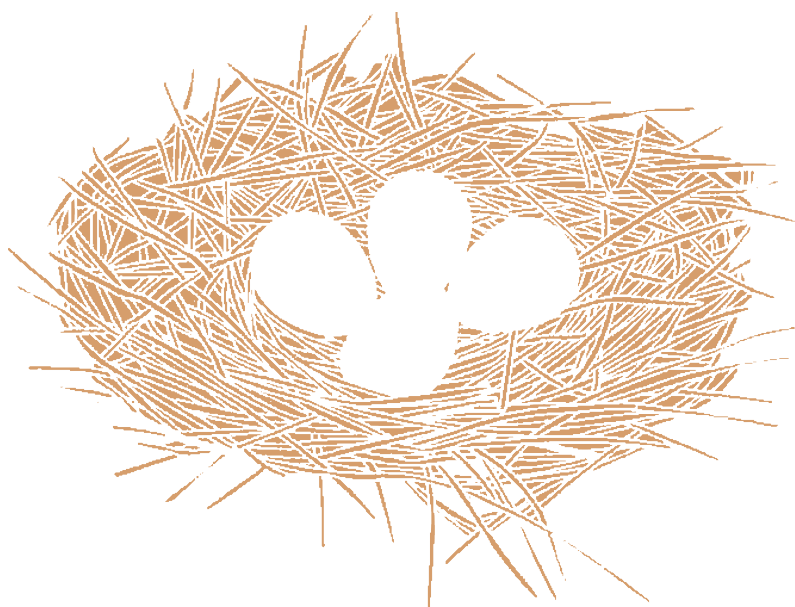




Low Pitch

“krrreekrrreekrrreekrrree”

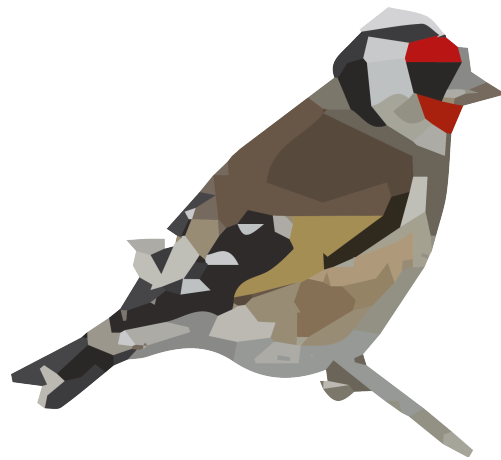
Sharp



Cup Nest / Bird House

**HIGH PITCH**





*Carduelis carduelis*  
(Goldfinch)

*size*

12 cm

*season*

JAN FEB MAR APR MAY JUN JUL AUG SEP OCT NOV DEC

*systems*

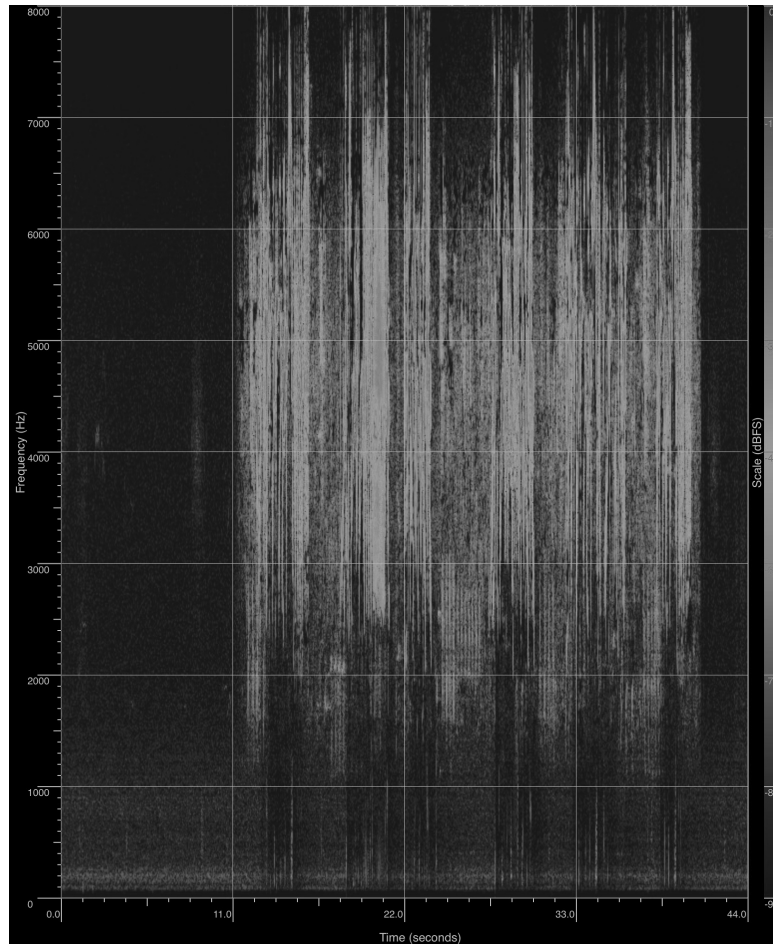


*layer of habitat*



<- not sure





High Pitch

“tzee-witt”

Sharp





Dome nest



*Certhia familiaris*  
(Treecreeper)

*size*

12 cm

*season*

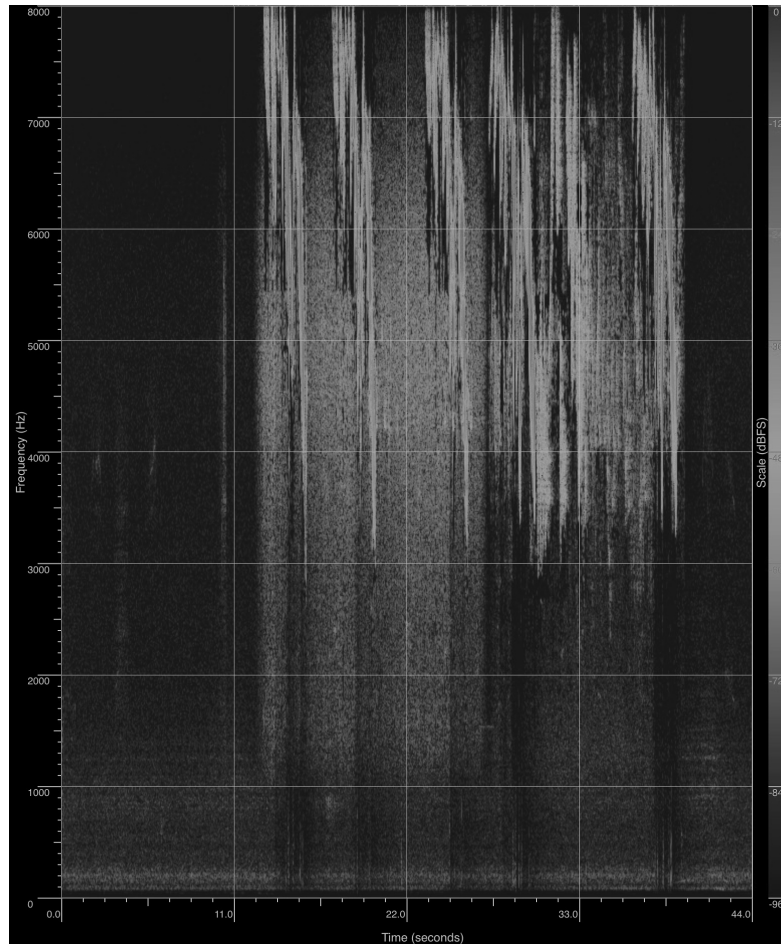
JAN FEB MAR APR MAY JUN JUL AUG SEP OCT NOV DEC

*systems*



*layer of habitat*



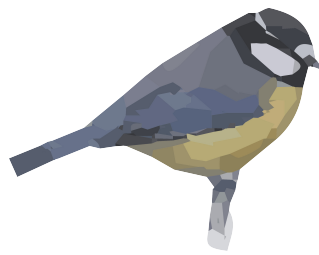


High Pitch

“tzreeee”

Vibrating





*Cyanistes caeruleus*  
(Blue Tit)

*size*

11 cm

*season*

JAN FEB MAR APR MAY JUN JUL AUG SEP OCT NOV DEC

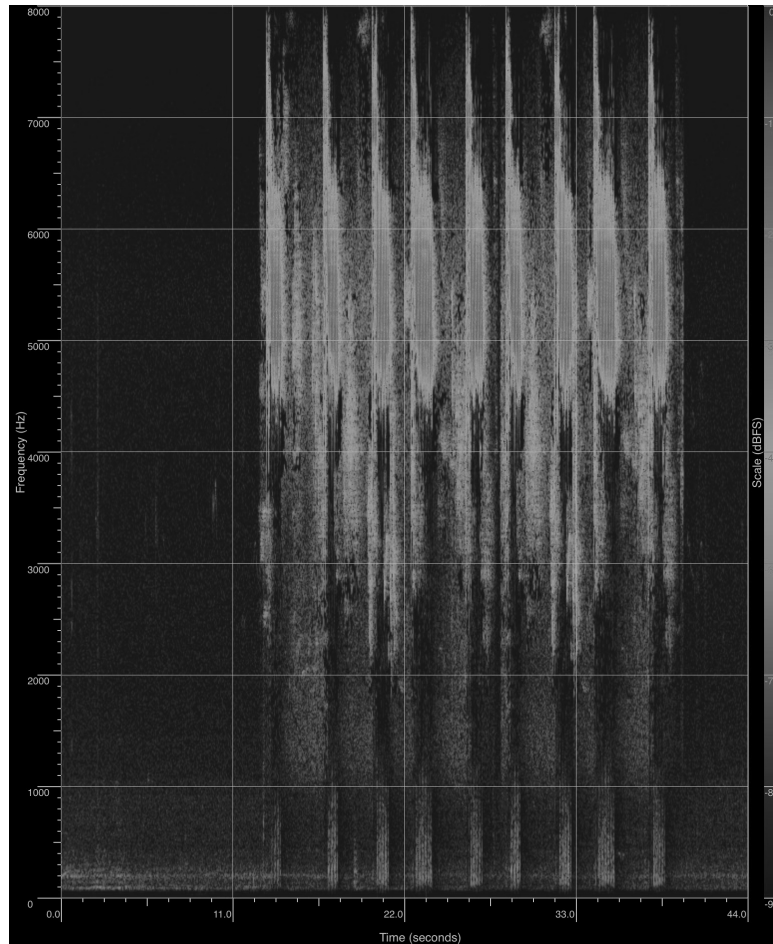
*systems*



*layer of habitat*





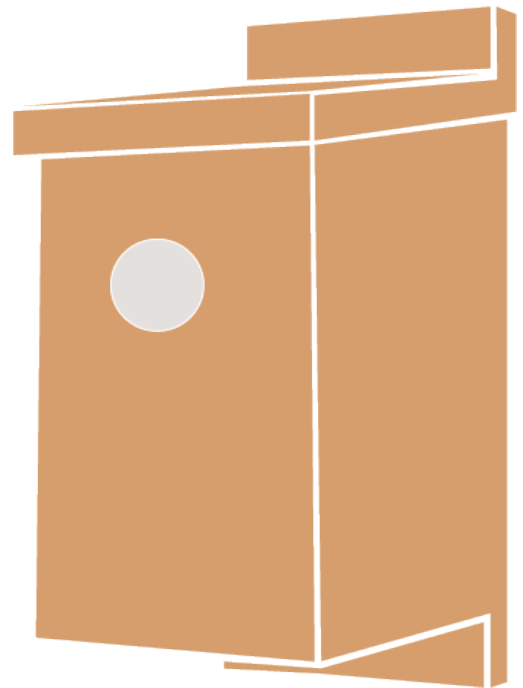
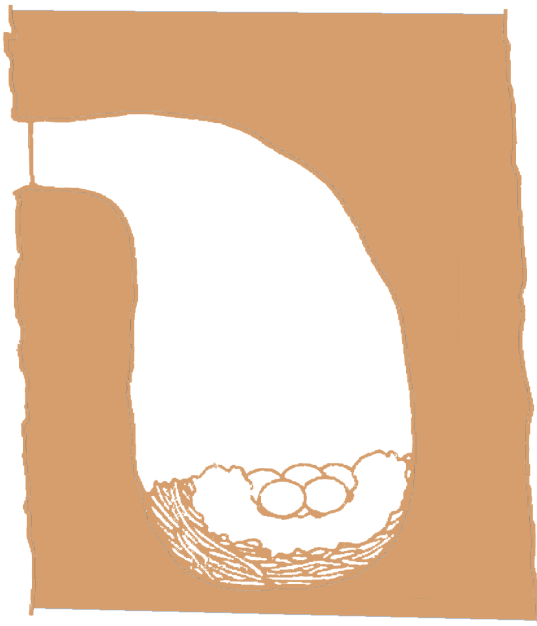


High Pitch

“ti ti chuhuhuhuhuhuhuhu”

Clear





Found tree house Bird box(Diameter of entrance:1.1 inch)



*Erithacus rubecula*  
(European Robin)

*size*

14 cm

*season*

JAN FEB MAR APR MAY JUN JUL AUG SEP OCT NOV DEC

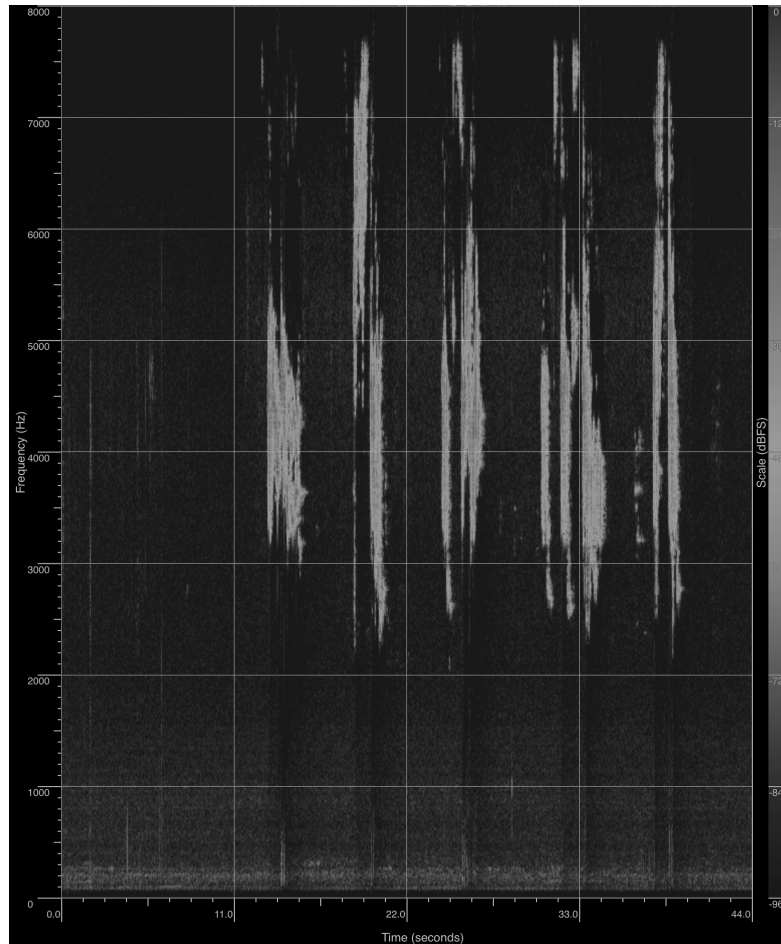
*systems*



*layer of habitat*

<-not sure

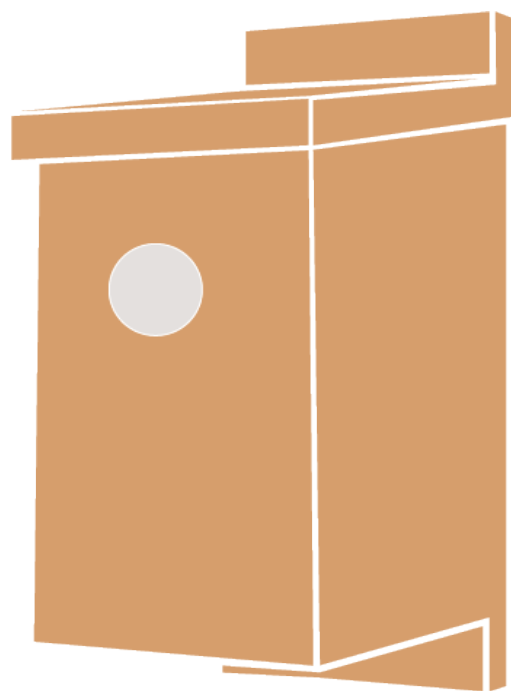
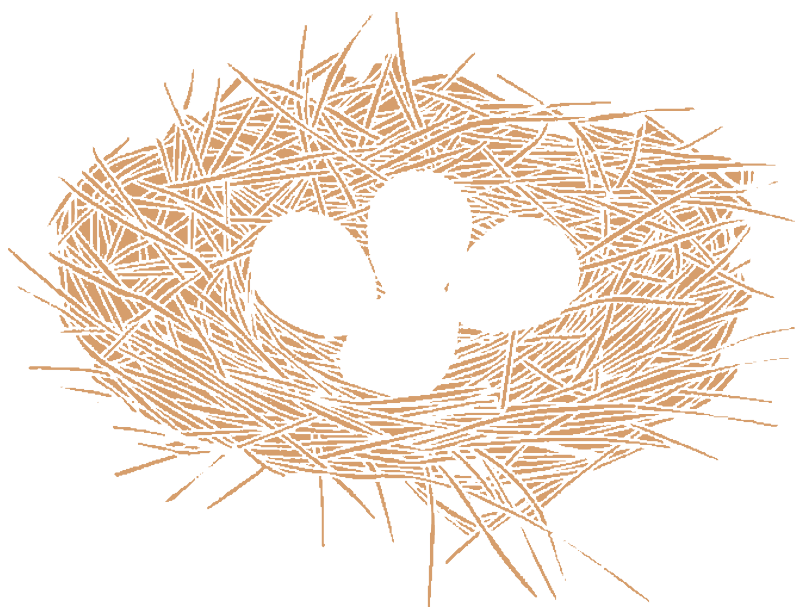




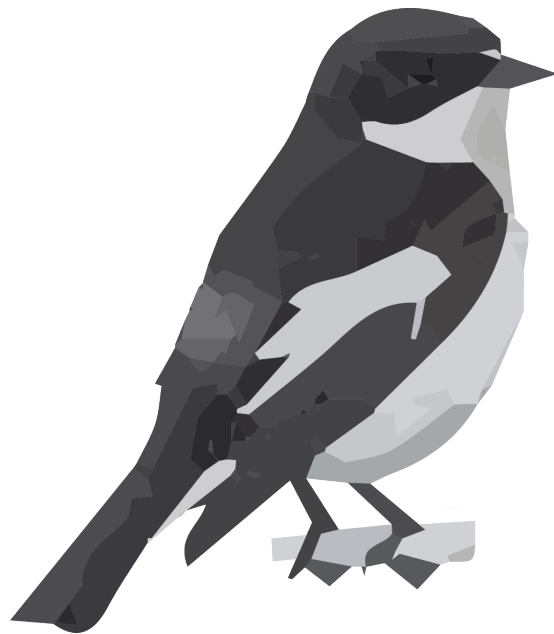
High Pitch

“tick”

Thin



Cup Nest / Bird House



*Ficedula hypoleuca*  
(Pied Flycatcher)

*size*

12-13 cm

*season*

JAN FEB MAR APR MAY JUN JUL AUG SEP OCT NOV DEC

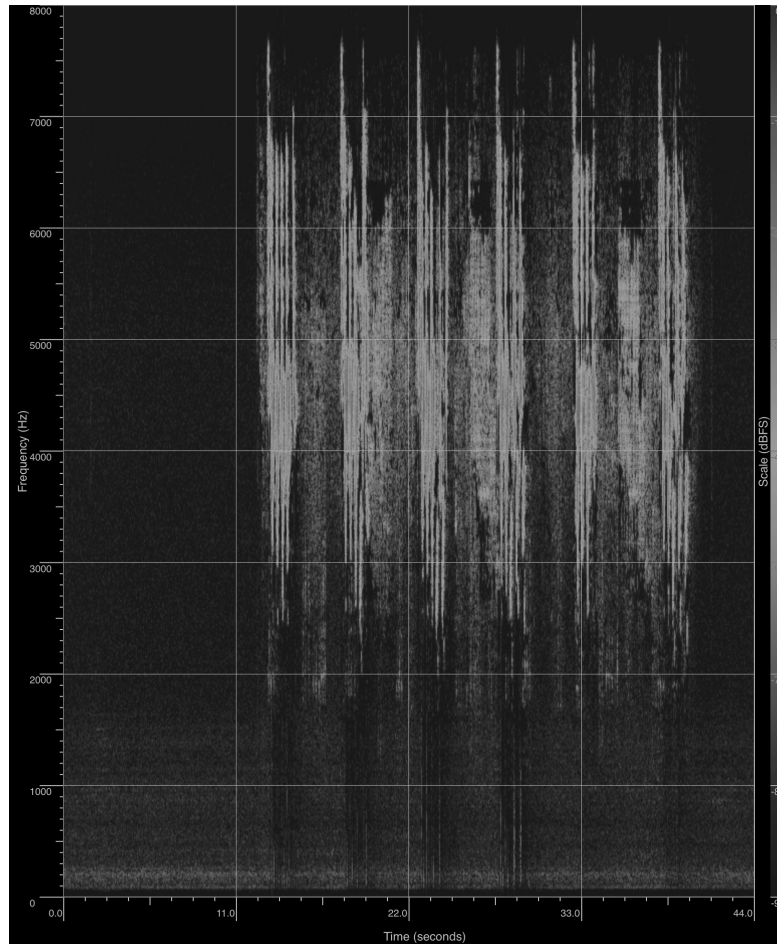
<-summer  
you edit la

*systems*

*layer of habitat*





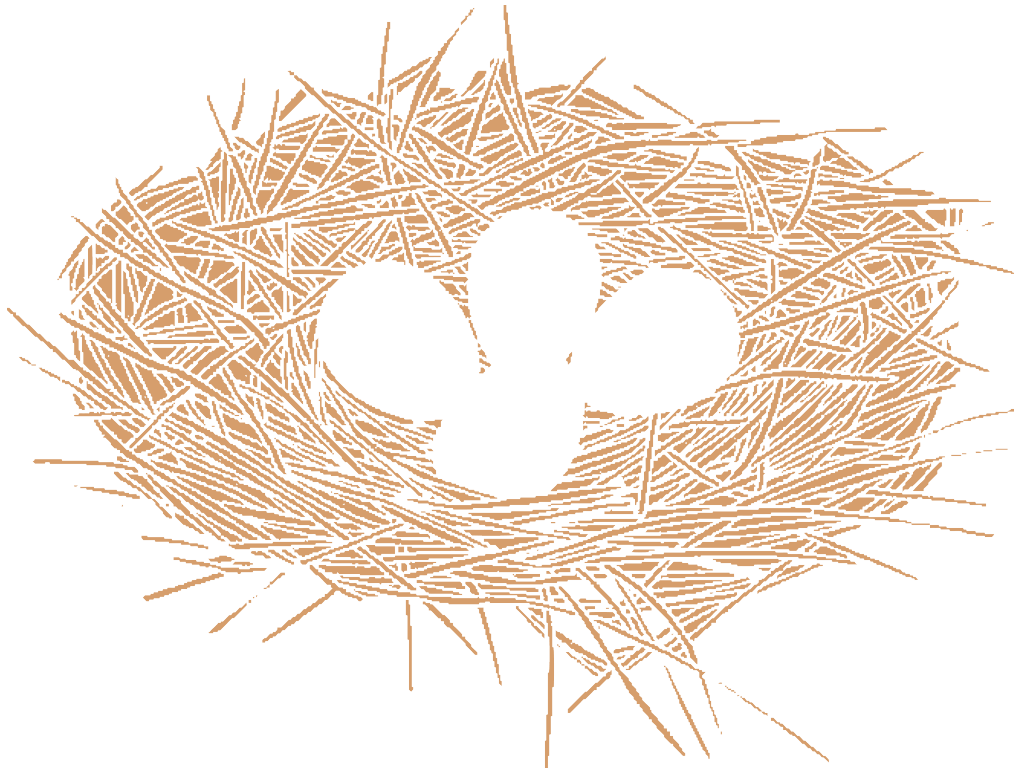


High Pitch

“whit-tic”

Sharp





CUP Nest  
(Gound)



*Motacilla flava*  
(Yellow Wagtail)

size

17cm

season

JAN FEB MAR APR MAY JUN JUL AUG SEP OCT NOV DEC <-migrant breeding

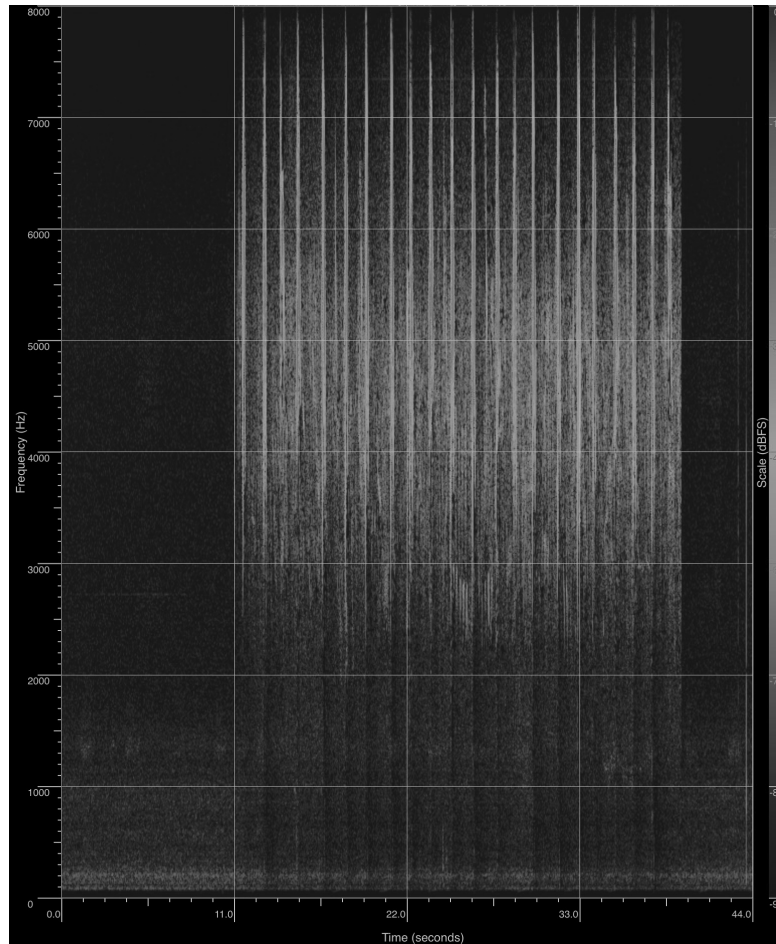
systems



layer of habitat



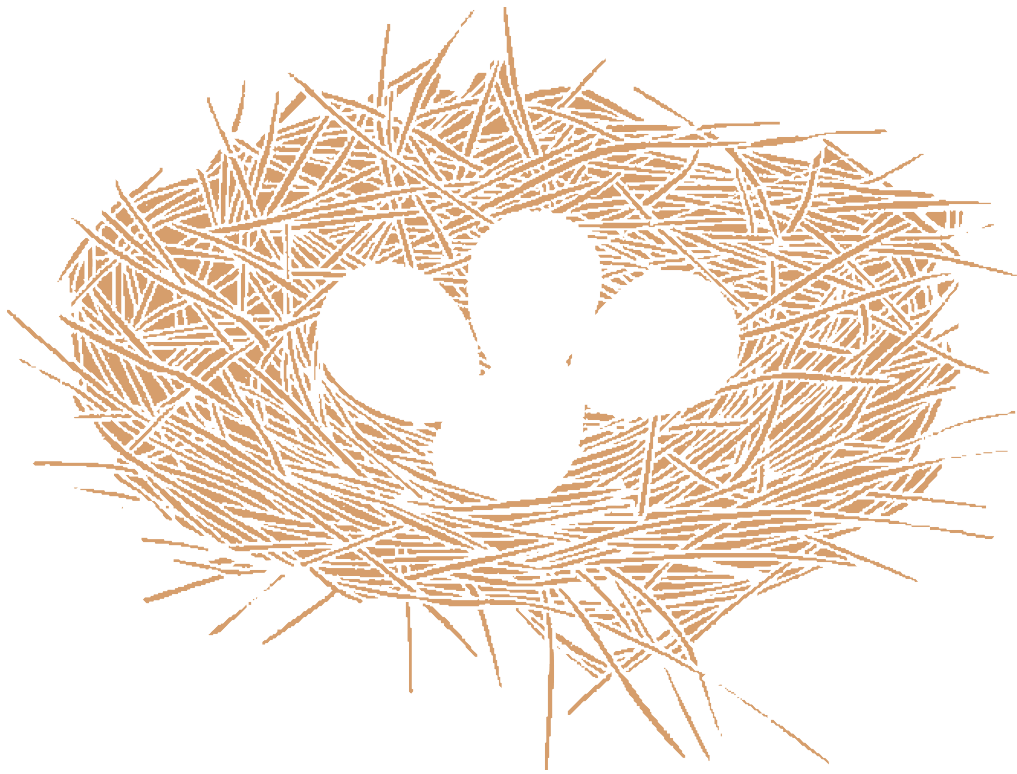




High Pitch

“pseeoo”

Sharp



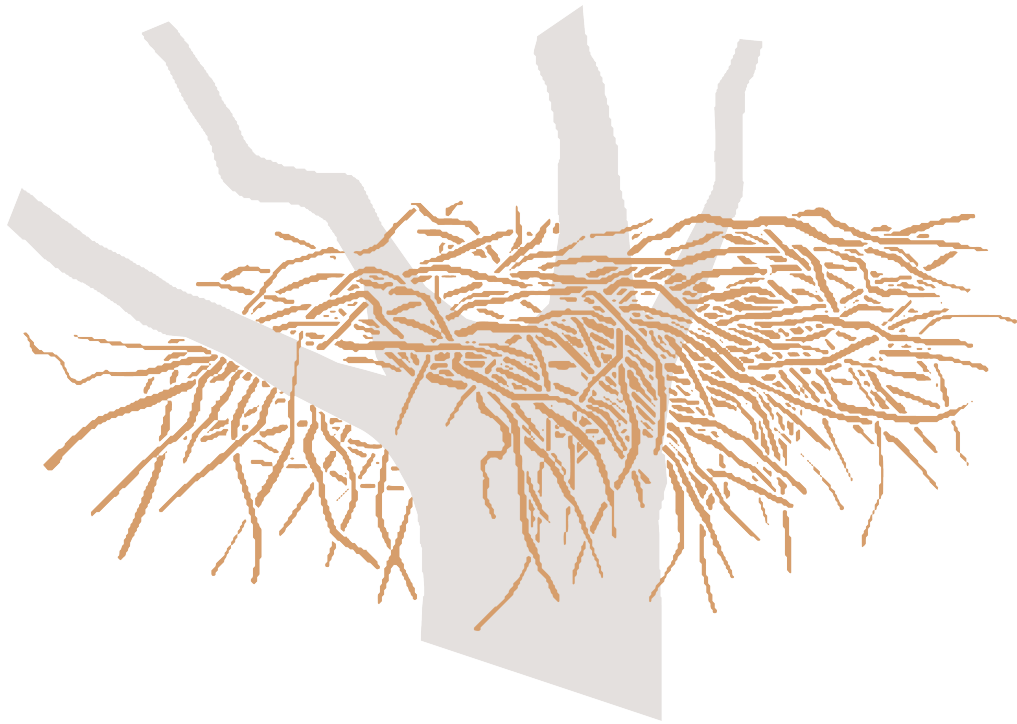
CUP Nest  
(Gound)



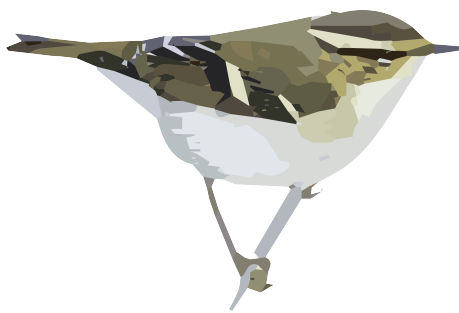








Platform nest



*Phylloscopus inornatus*  
(Yellow-browed Warbler)

*size*

10 cm

*season*

JAN FEB MAR APR MAY JUN JUL AUG SEP OCT NOV DEC <- full migrant

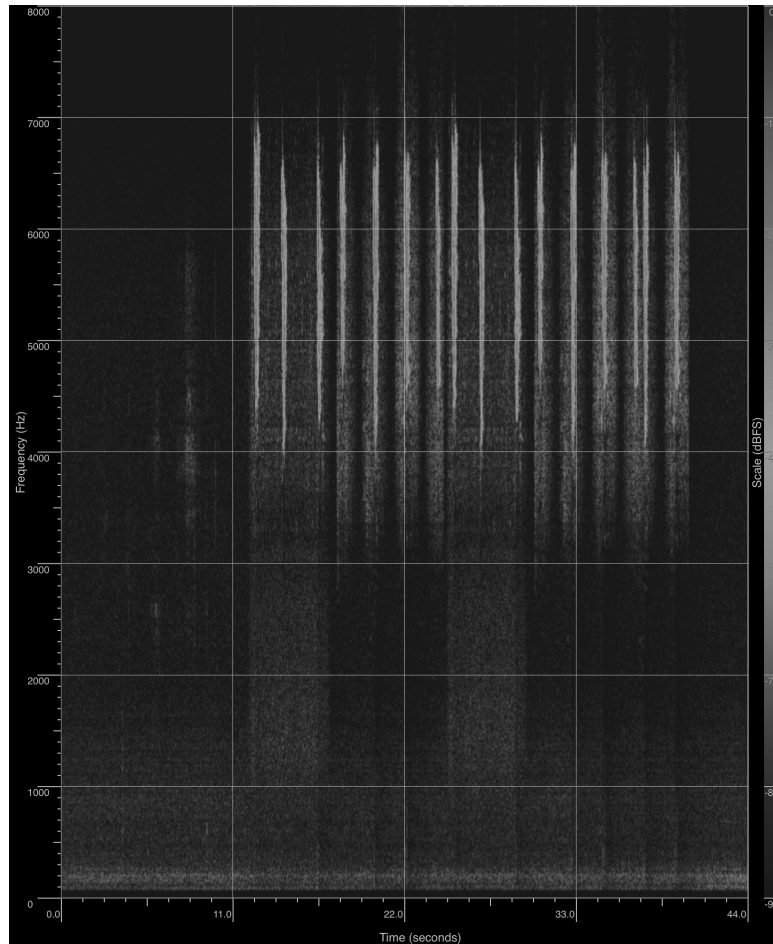
*systems*



*layer of habitat*

<- not sure

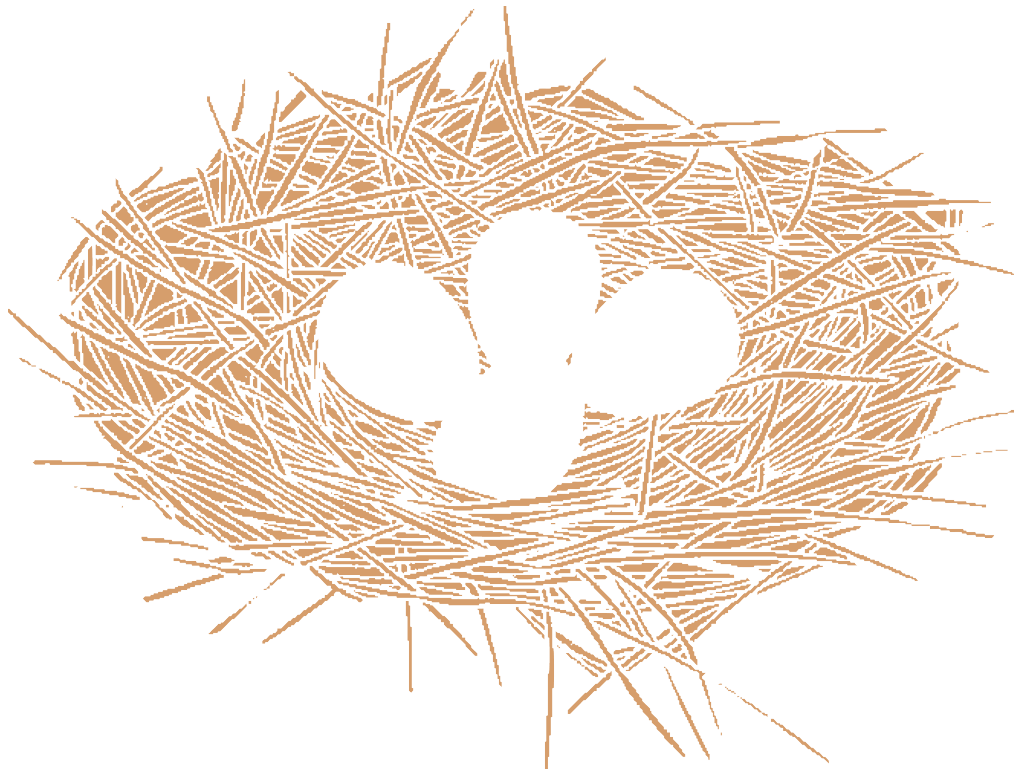




High Pitch

“zeeooooee”

Pitch Rapidly Changing



CUP Nest  
(Gound)



*Phylloscopus trochilus*  
(Willow Warbler)

size

10-11 cm

season

JAN FEB MAR APR MAY JUN JUL AUG SEP OCT NOV DEC <-migrant breeding

systems

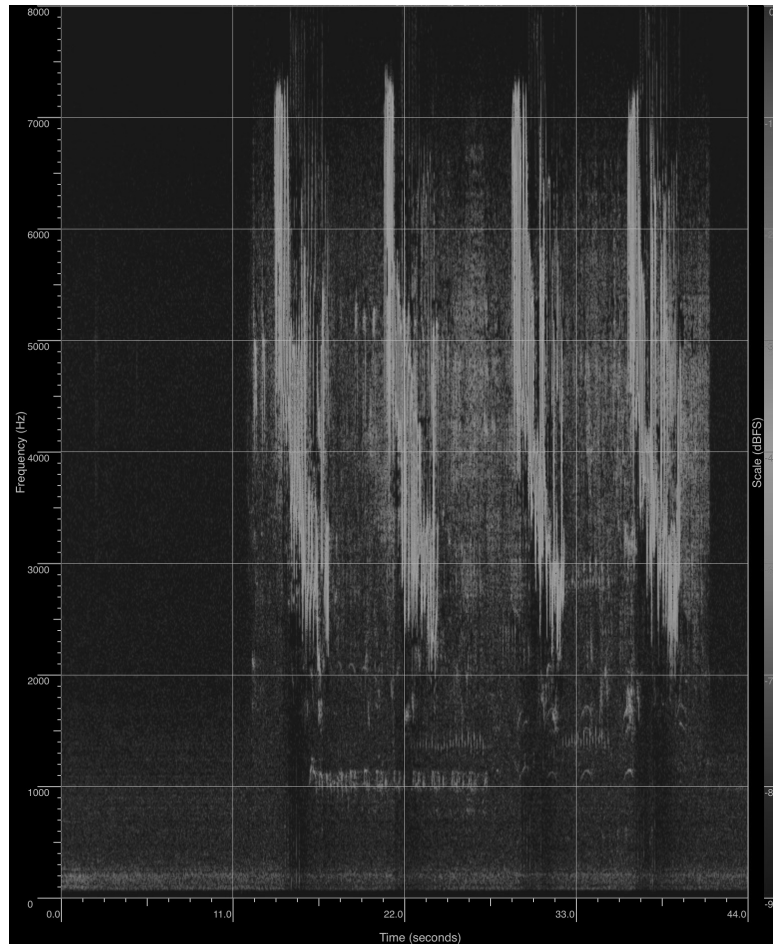


layer of habitat



<- not sure





High Pitch

“hoo-ect”

Soft





Dome Nest



*Troglodytes troglodytes*  
(Wren)

*size*

9-10 cm

*season*

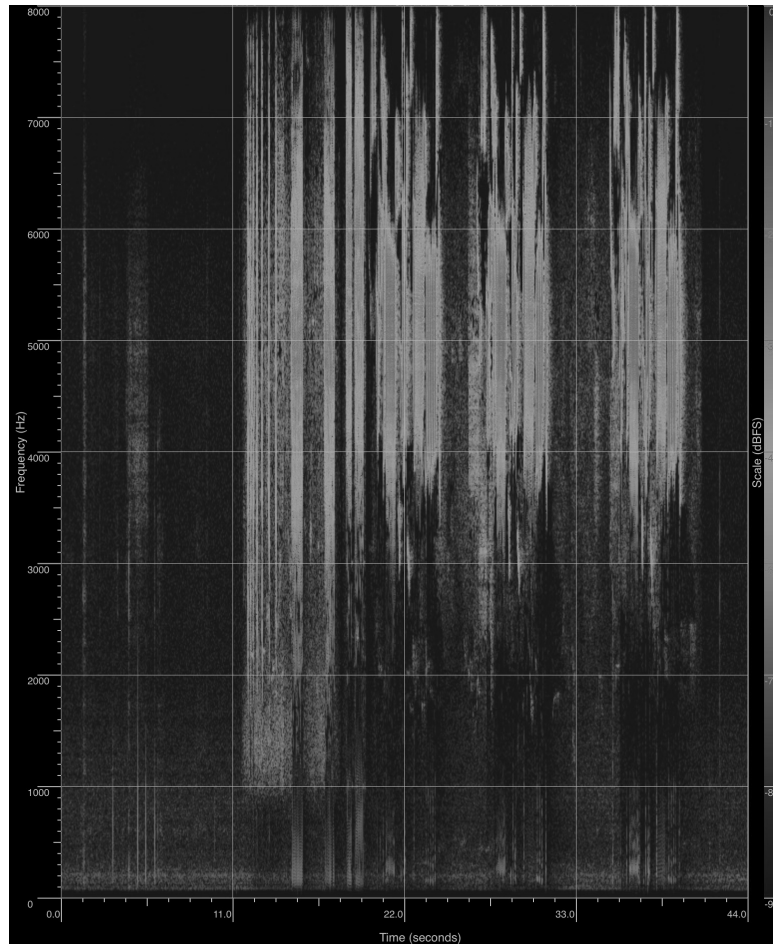
JAN FEB MAR APR MAY JUN JUL AUG SEP OCT NOV DEC

*systems*



*layer of habitat*

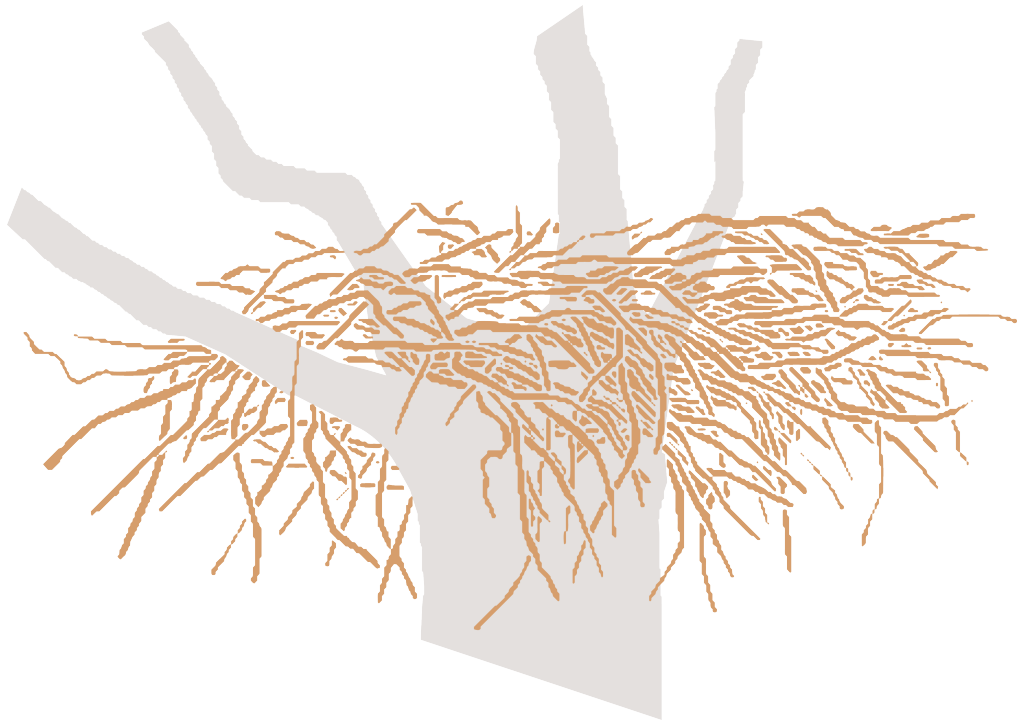




High Pitch

“teck”

Clear



Platform nest

**LOW & HIGH PITCH**





*Accipiter nisus*  
(Sparrowhawk)

*size* 28-38 cm

*season* JAN FEB MAR APR MAY JUN JUL AUG SEP OCT NOV DEC

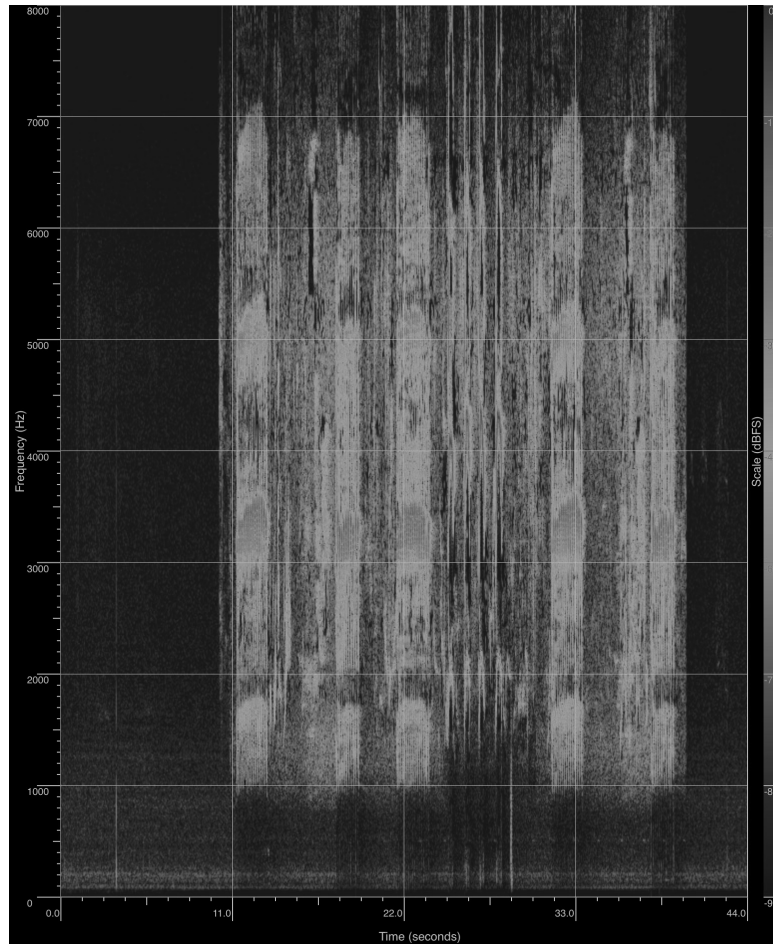
*systems*



*layer of habitat*



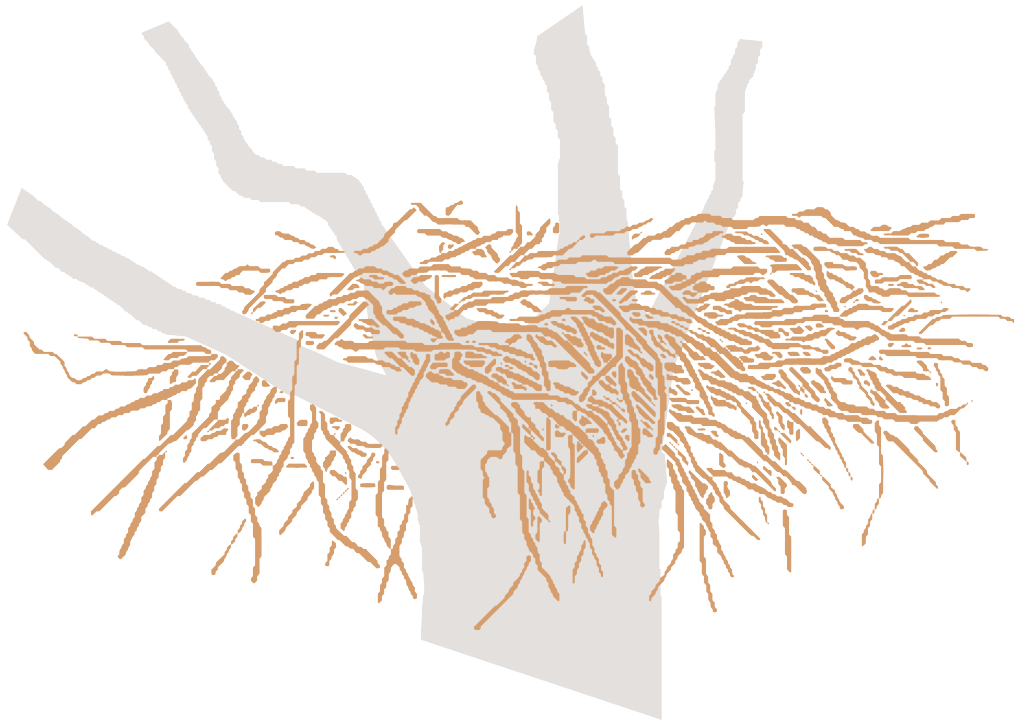




High Pitch & Low Pitch

“ke-ke-ke-ke-ke”

Short



Platform nest  
(Gound)



*Aegithalos caudatus*  
(Long-tailed Tit)

*size*

14 cm

*season*

JAN FEB MAR APR MAY JUN JUL AUG SEP OCT NOV DEC

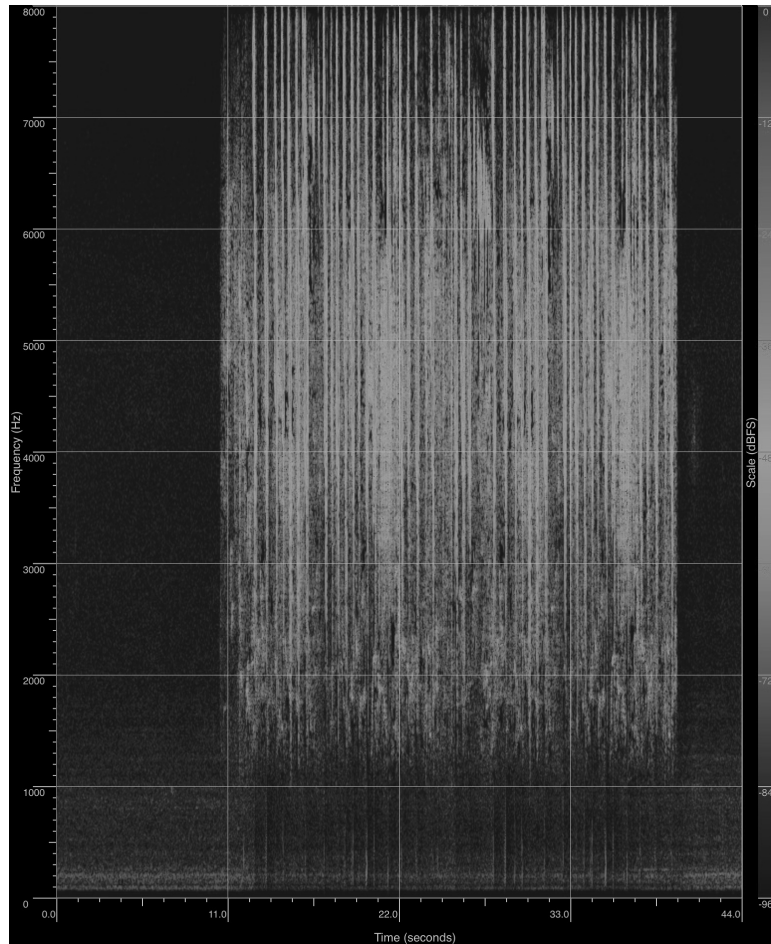
*systems*



*layer of habitat*



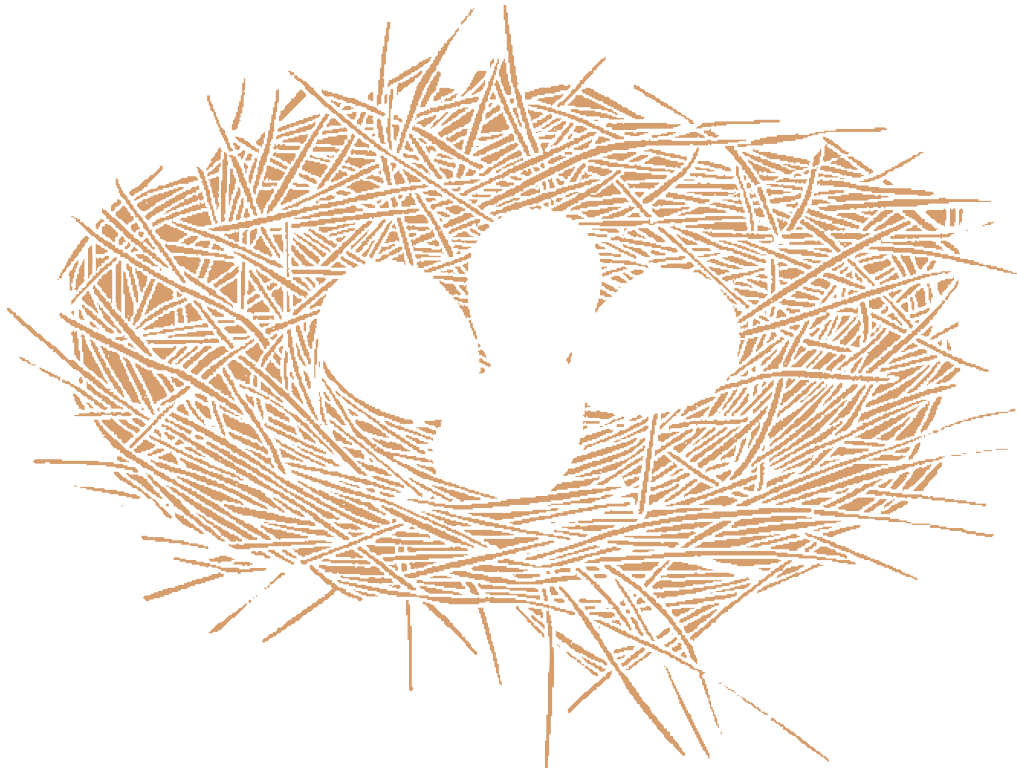




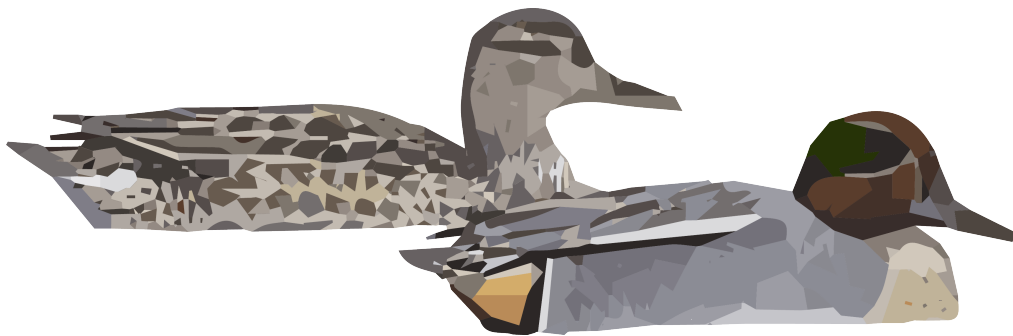
High Pitch & Low Pitch

“tzzirret tziirret”

Rapid



CUP Nest  
(Gound)



*Anas crecca*  
(Teal)

*size*

34-38 cm

*season*

JAN FEB MAR APR MAY JUN JUL AUG SEP OCT NOV DEC

*systems*

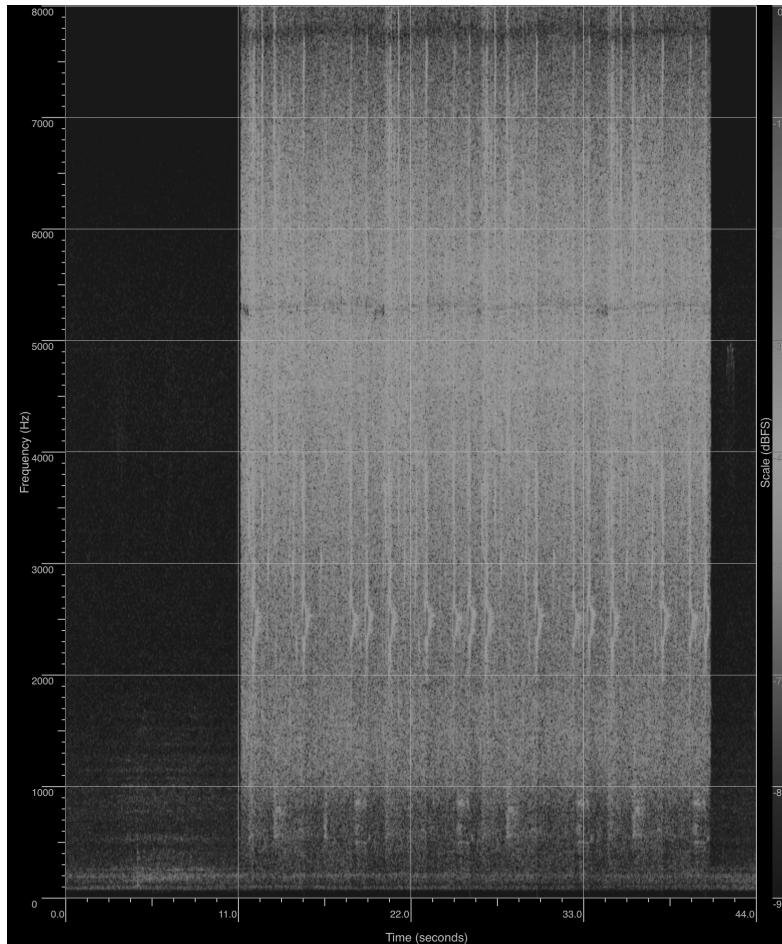


*layer of habitat*





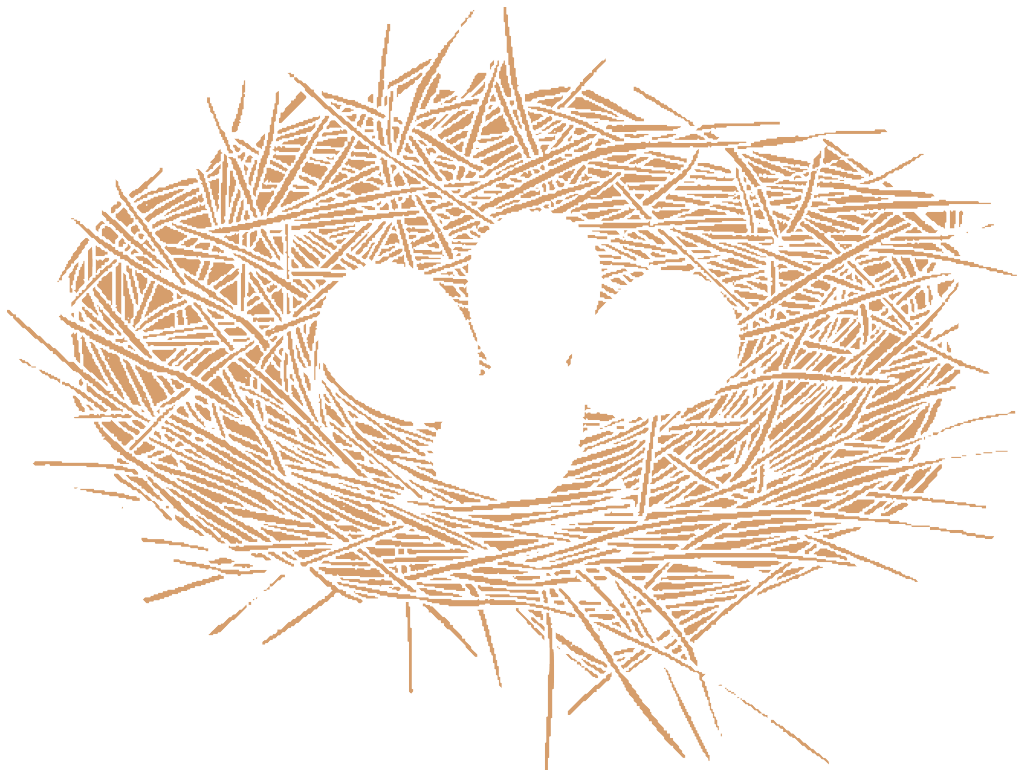




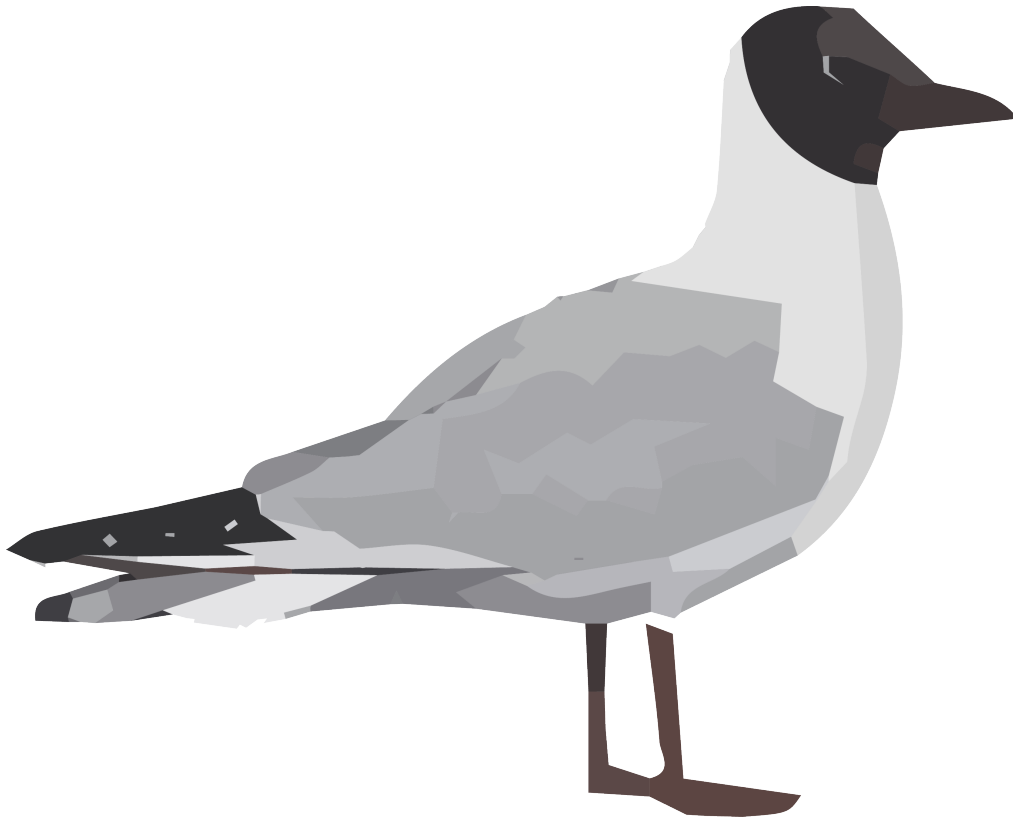
High Pitch & Low Pitch

“plytt”

Short



CUP Nest  
(Gound)



*Chroicocephalus ridibundus*  
(Black-headed Gull)

*size*

34-37 cm

*season*

JAN FEB MAR APR MAY JUN JUL AUG SEP OCT NOV DEC

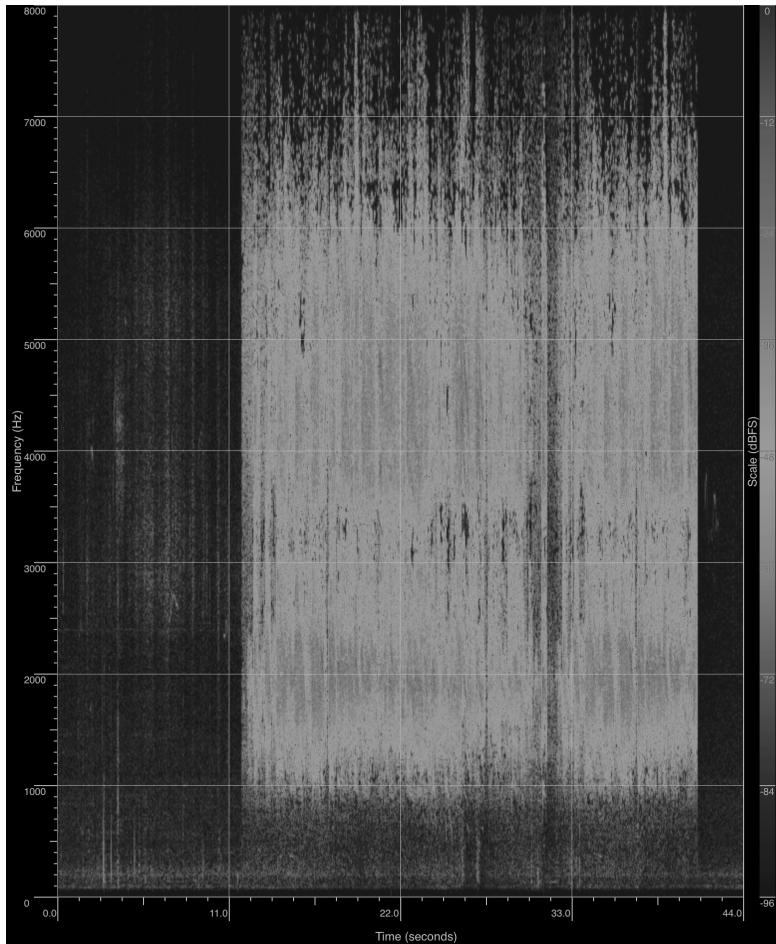
*systems*



*layer of habitat*



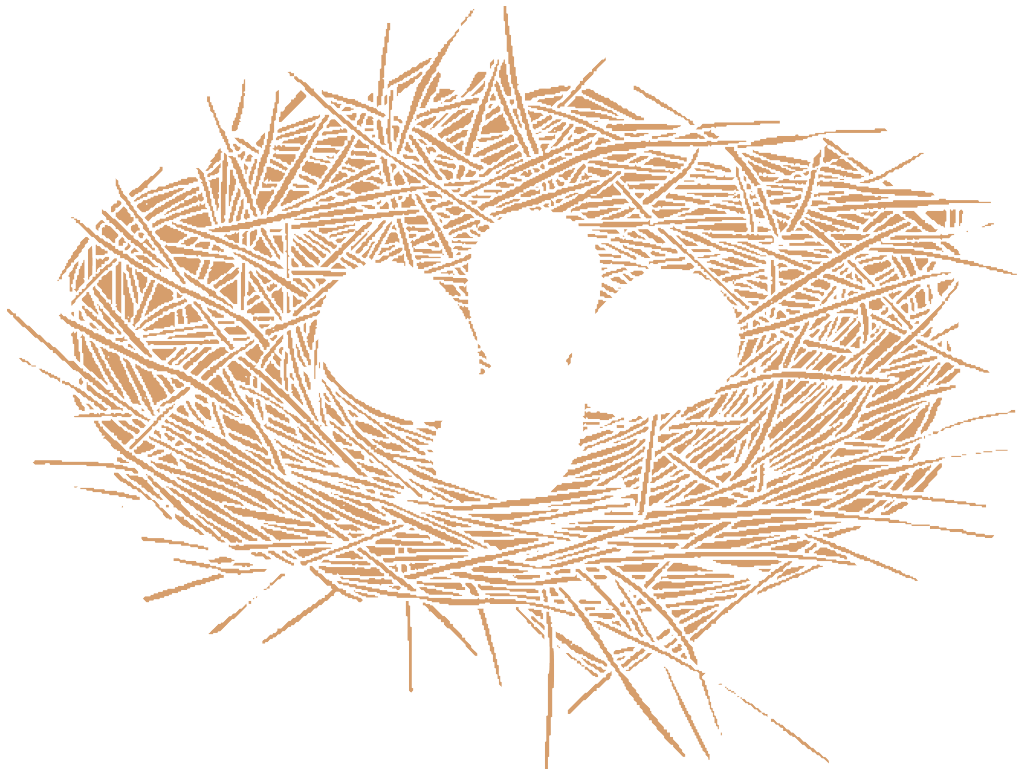




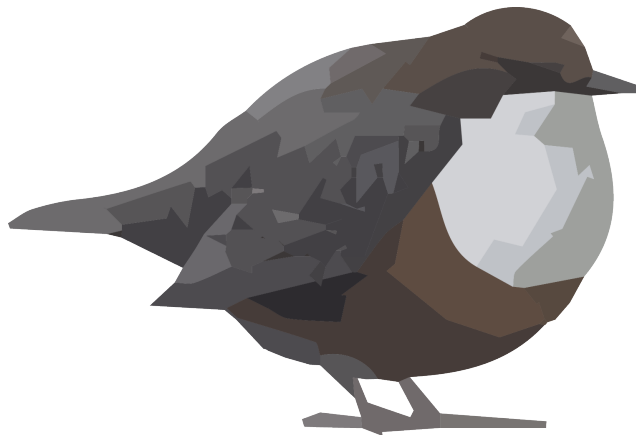
High Pitch & Low Pitch

“kreearr”

shorter and sharp



CUP Nest  
(Gound)



*Cinclus cinclus*  
(Dipper)

*size*

18cm

*season*

JAN FEB MAR APR MAY JUN JUL AUG SEP OCT NOV DEC

*systems*



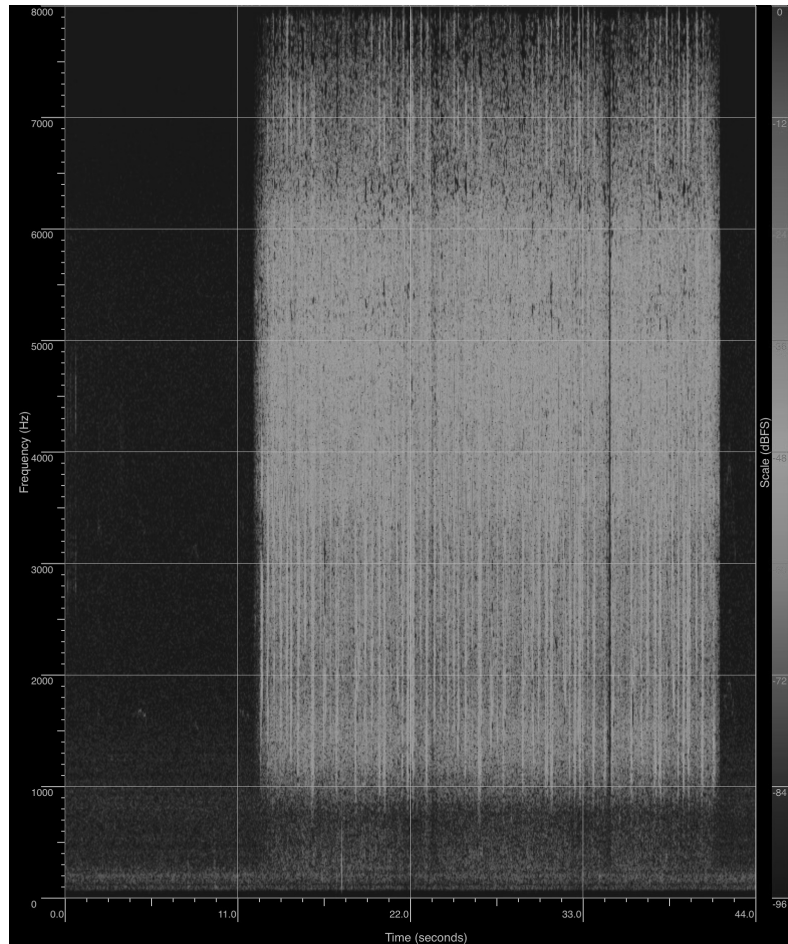
*layer of habitat*



<-not sure



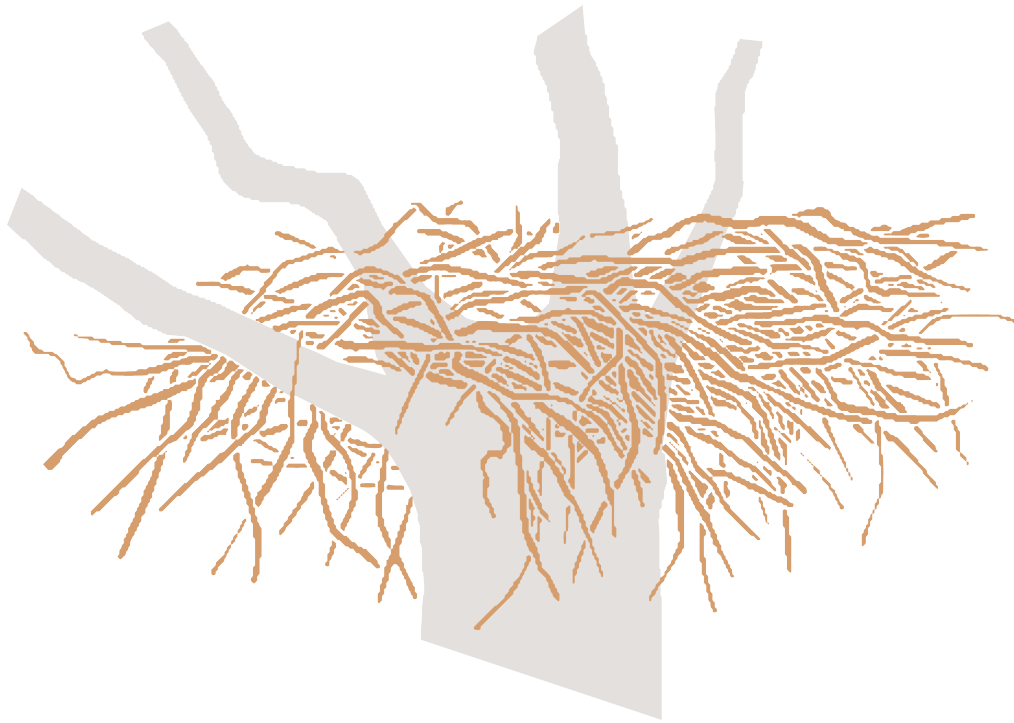




High Pitch & Low Pitch

“zrreet”

Short and Metallic



Platform nest



*Columba palumbus*  
(Wood Pigeon)

*size* 40-42 cm

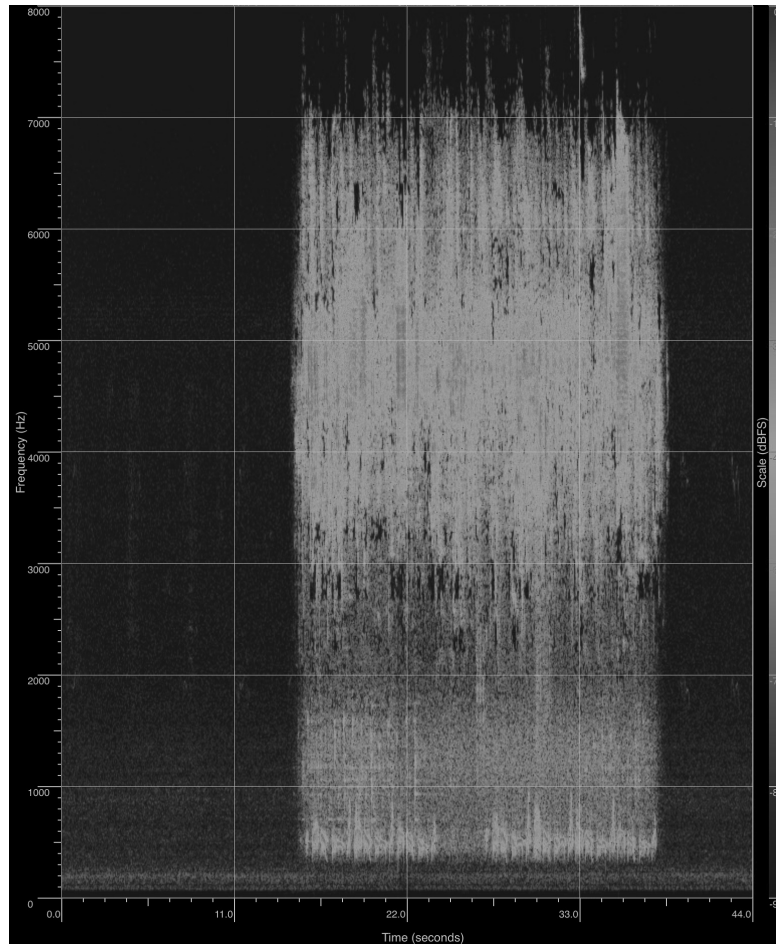
*season* JAN FEB MAR APR MAY JUN JUL AUG SEP OCT NOV DEC

*systems*

*layer of habitat*



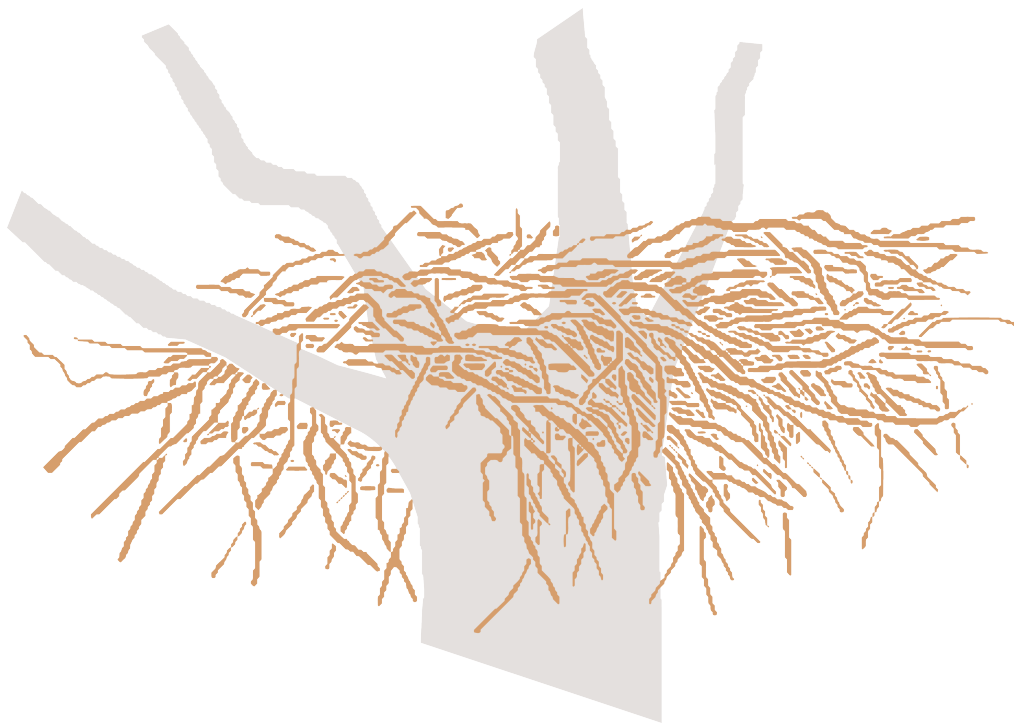




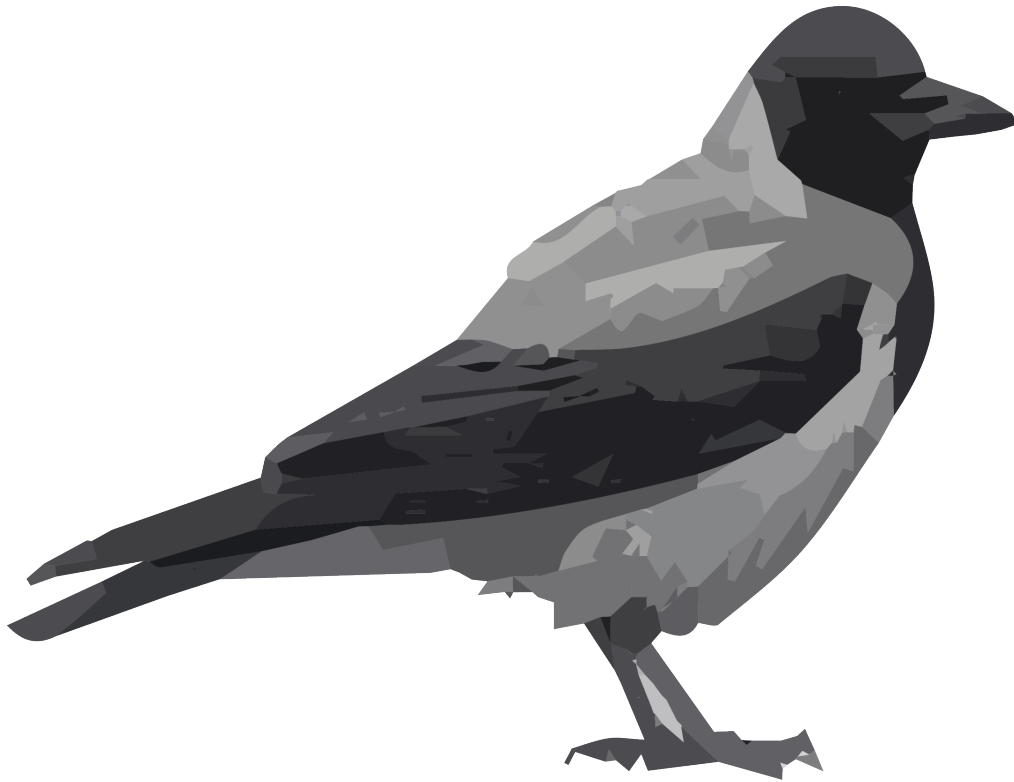
High Pitch & Low Pitch

“gu guu guu guu guu\*(i made it up;not in the website”

Clear



Platform nest



*Corvus cornix*  
(Hooded Crow)

*size*

45-47 cm

*season*

JAN FEB MAR APR MAY JUN JUL AUG SEP OCT NOV DEC

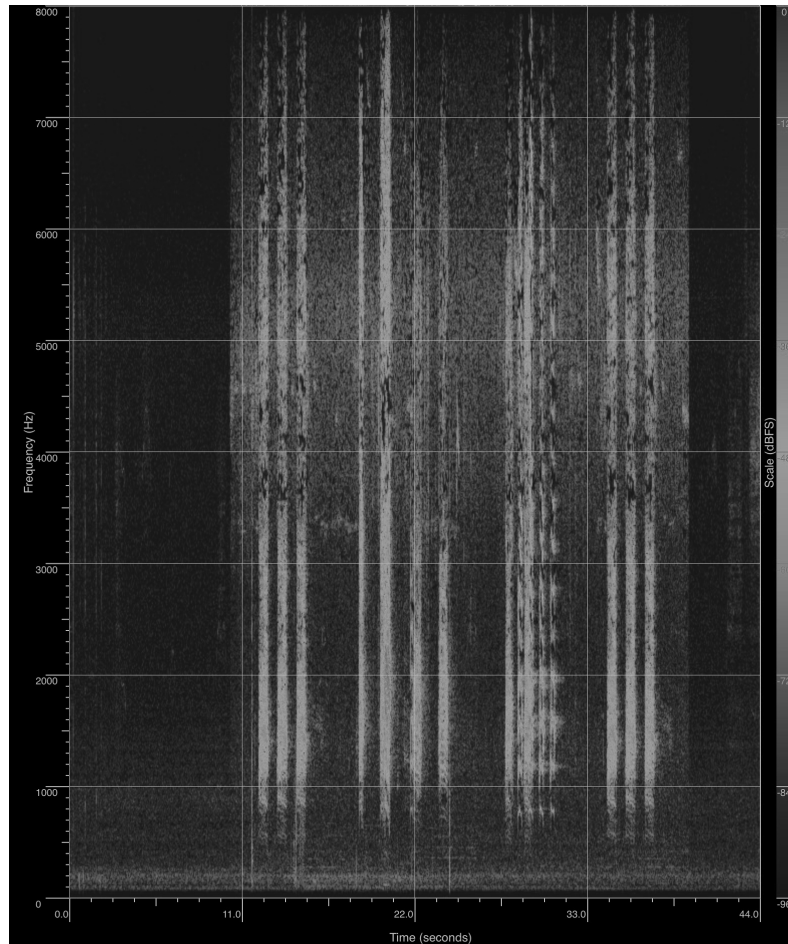
*systems*

*layer of habitat*





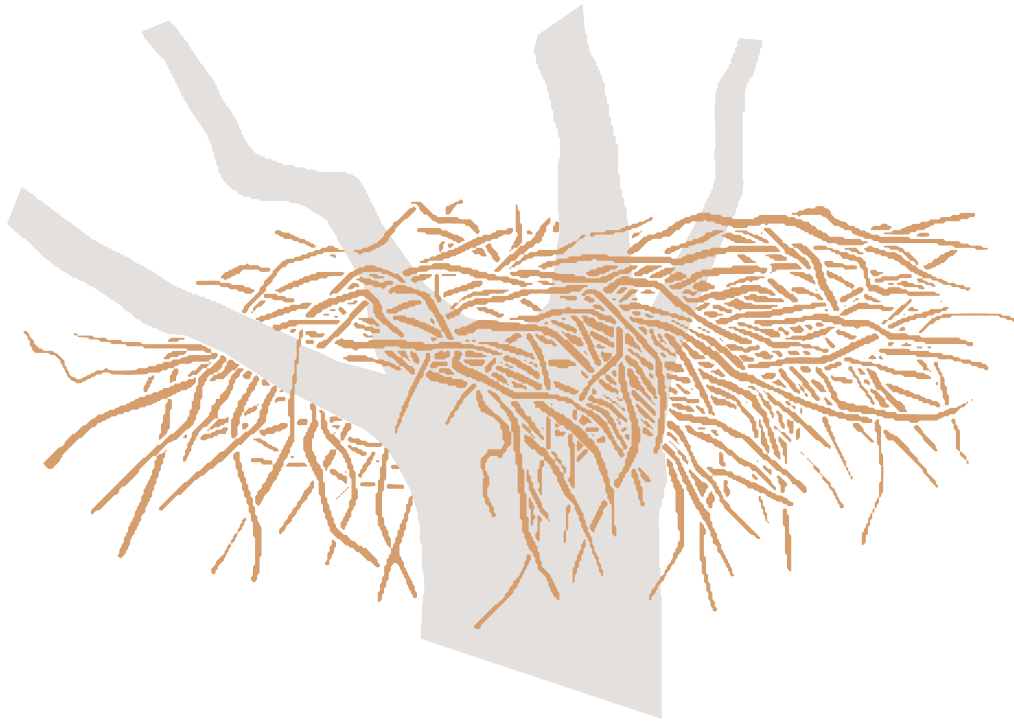




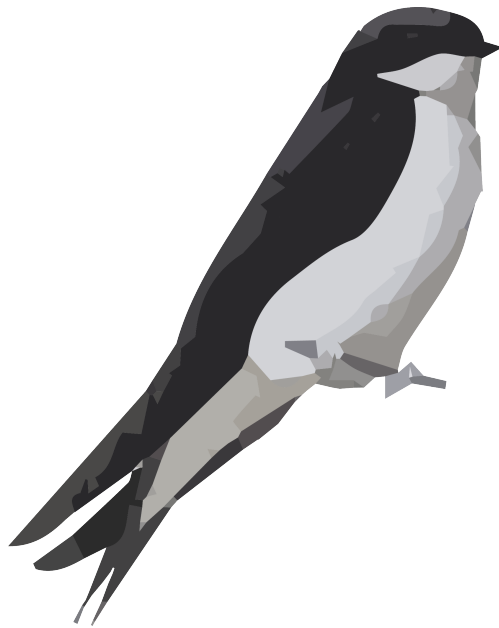
High Pitch & Low Pitch

“kraa(found on wiki)”

Clear



Platform nest



*Delichon urbicum*  
(House Martin)

*size*

12 cm

*season*

JAN FEB MAR APR MAY JUN JUL AUG SEP OCT NOV DEC

*systems*

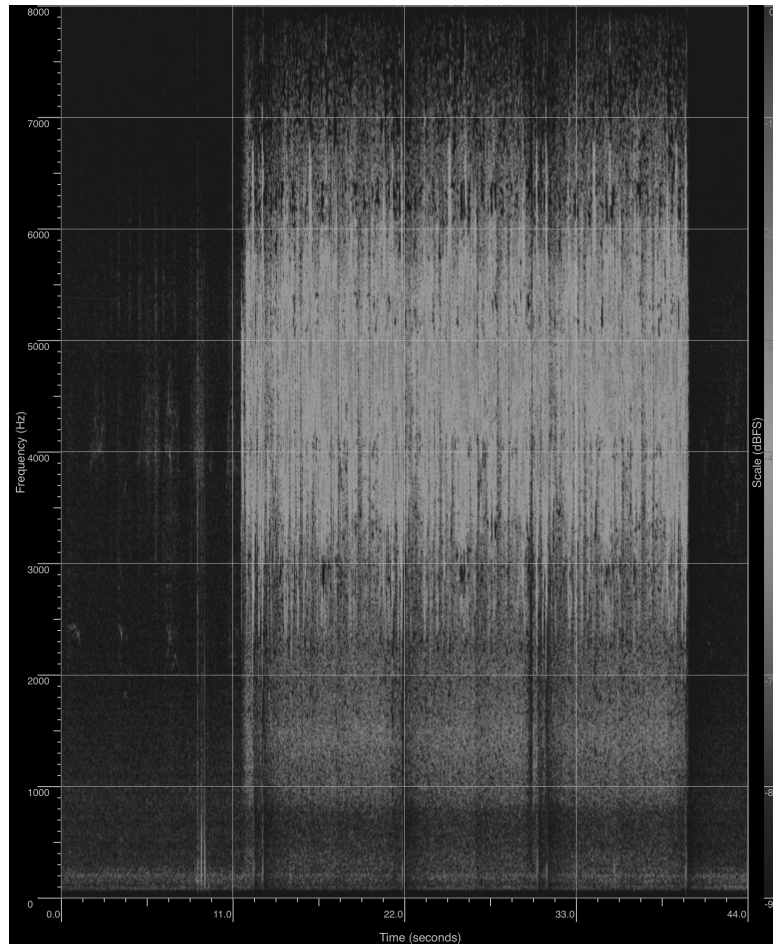


*layer of habitat*



<-?





High Pitch & Low Pitch

“krreet”

Sharp



Dome nest



*Dendrocopos major*  
(Great Spotted Woodpecker)

*size* 22-23 cm

*season* JAN FEB MAR APR MAY JUN JUL AUG SEP OCT NOV DEC

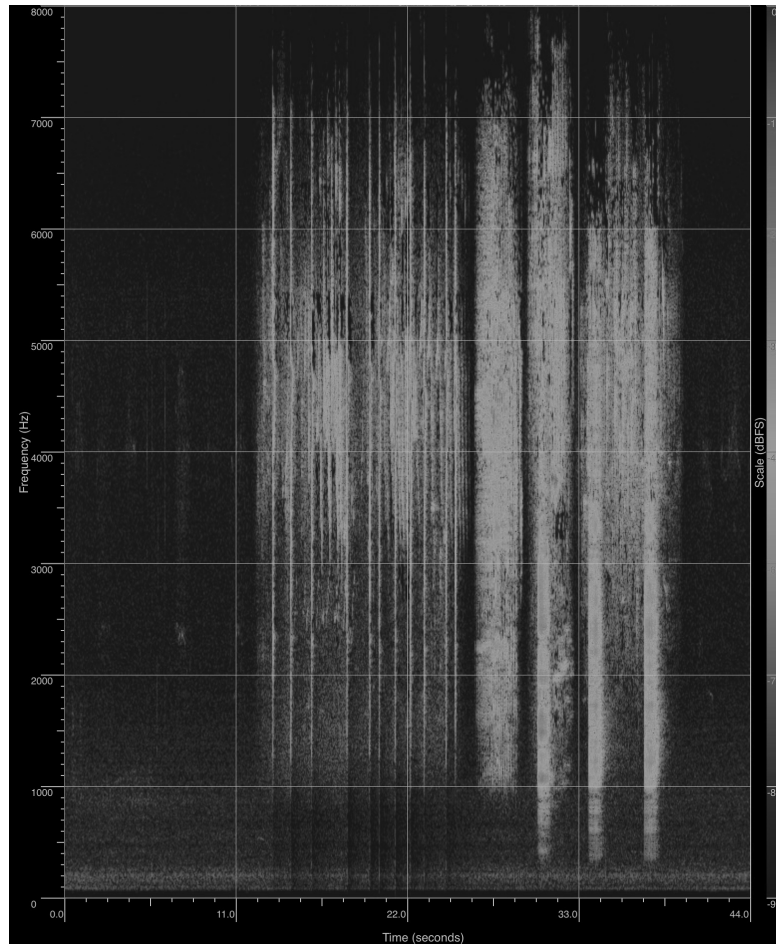
*systems*

*layer of habitat*





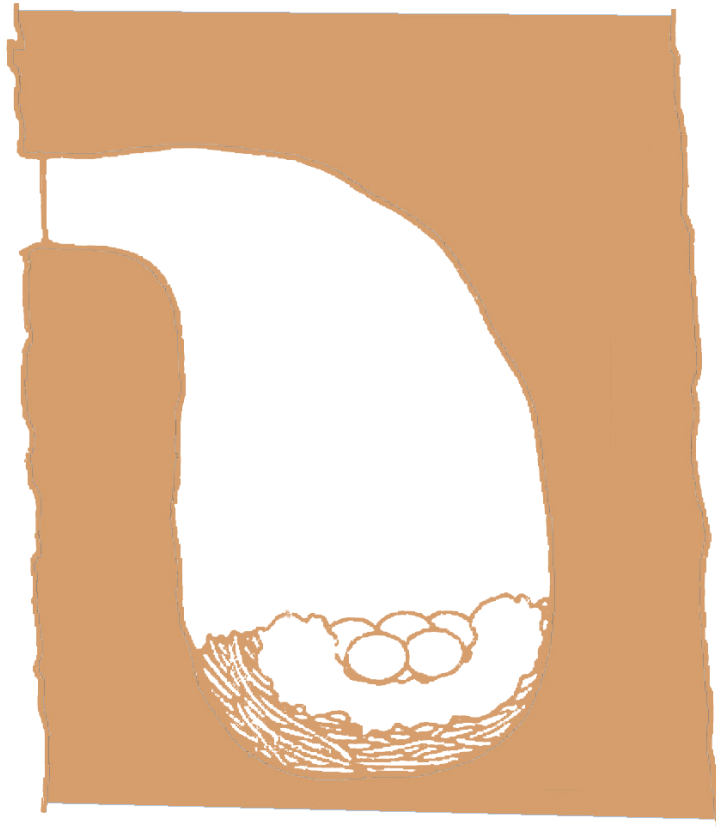




High Pitch & Low Pitch

“kek”

Short



Found tree hole



*Falco tinnunculus*  
(Kestrel)

*size*

32-35 cm

*season*

JAN FEB MAR APR MAY JUN JUL AUG SEP OCT NOV DEC

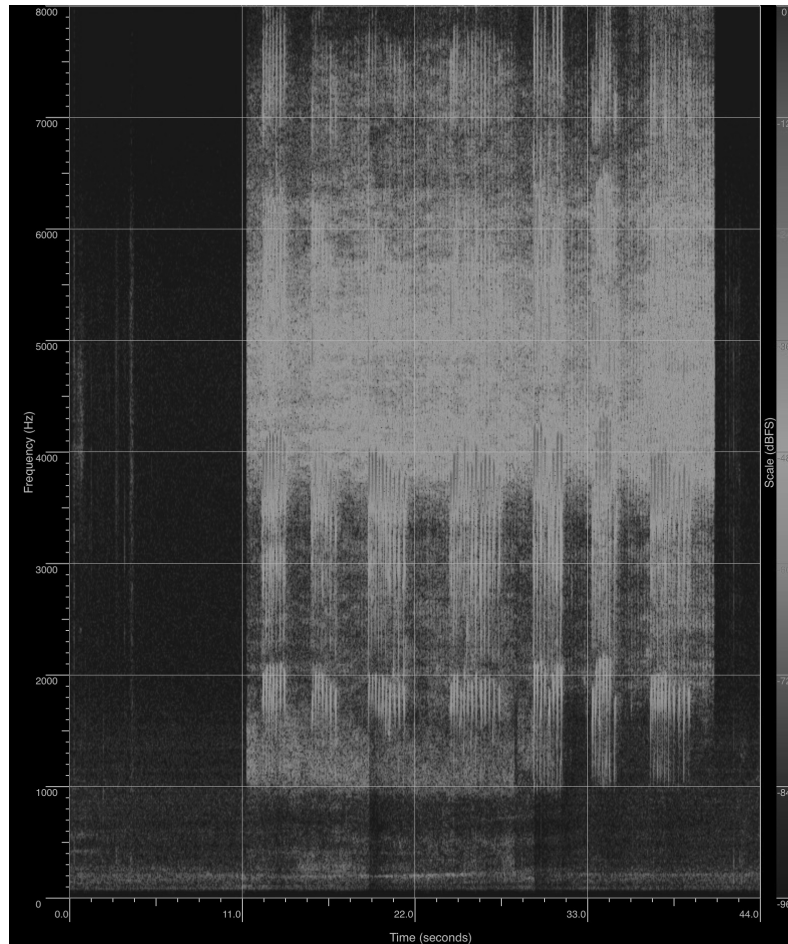
<-not sure (migrant  
breeding)

*systems*

*layer of habitat*



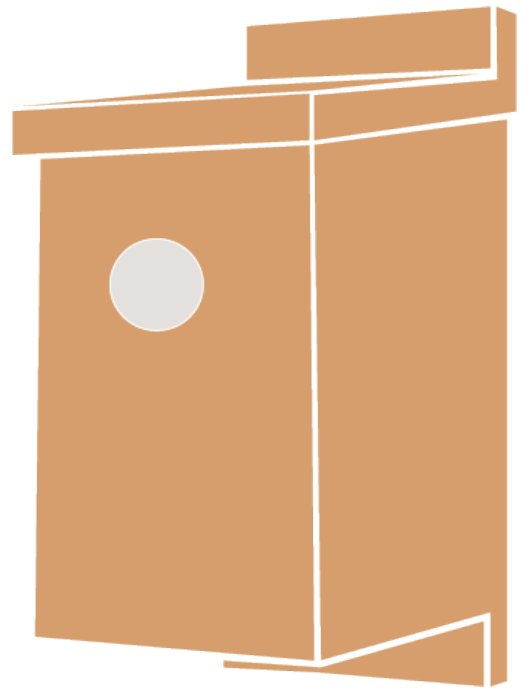
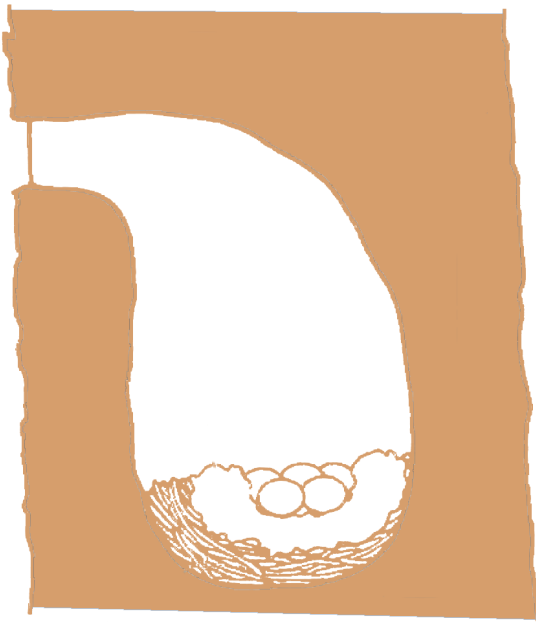




High Pitch & Low Pitch

“ke-ke-ke”

Short



Found tree house. Bird box (Diameter of entrance: 2 inches)



*Hippolais icterina*  
(Icterine Warbler)

size

13cm

season

JAN FEB MAR APR MAY JUN JUL AUG SEP OCT NOV DEC

systems

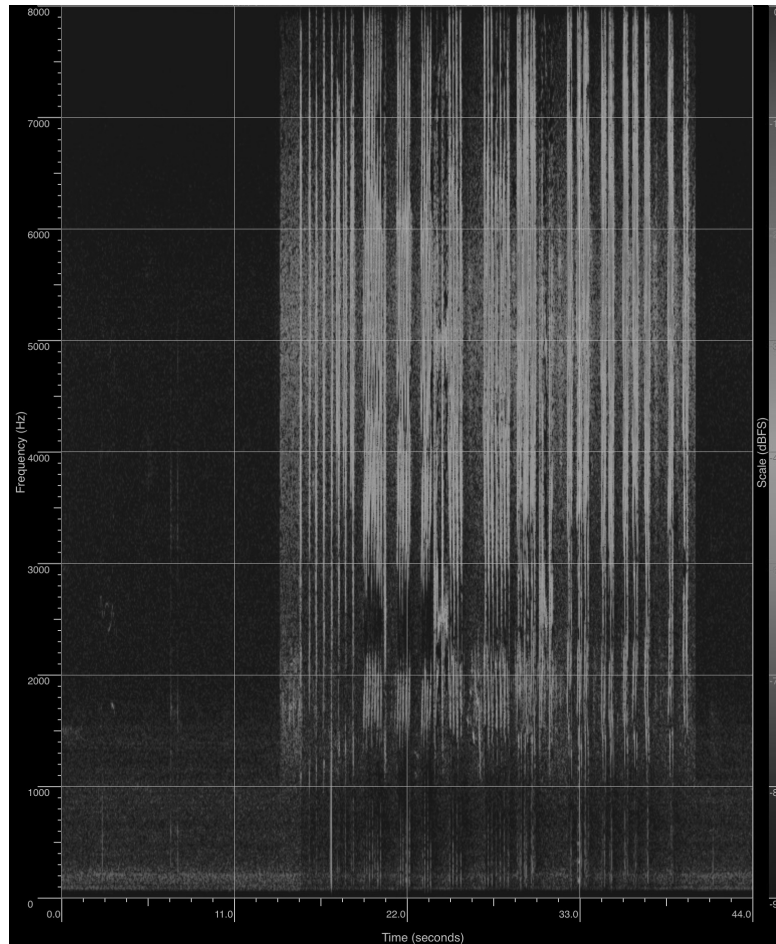


layer of habitat

<-?







High Pitch & Low Pitch

“che-che-fink”

Nasal



Dome nest



*Hirundo rustica*  
(Barn Swallow)

size

17-19cm

season

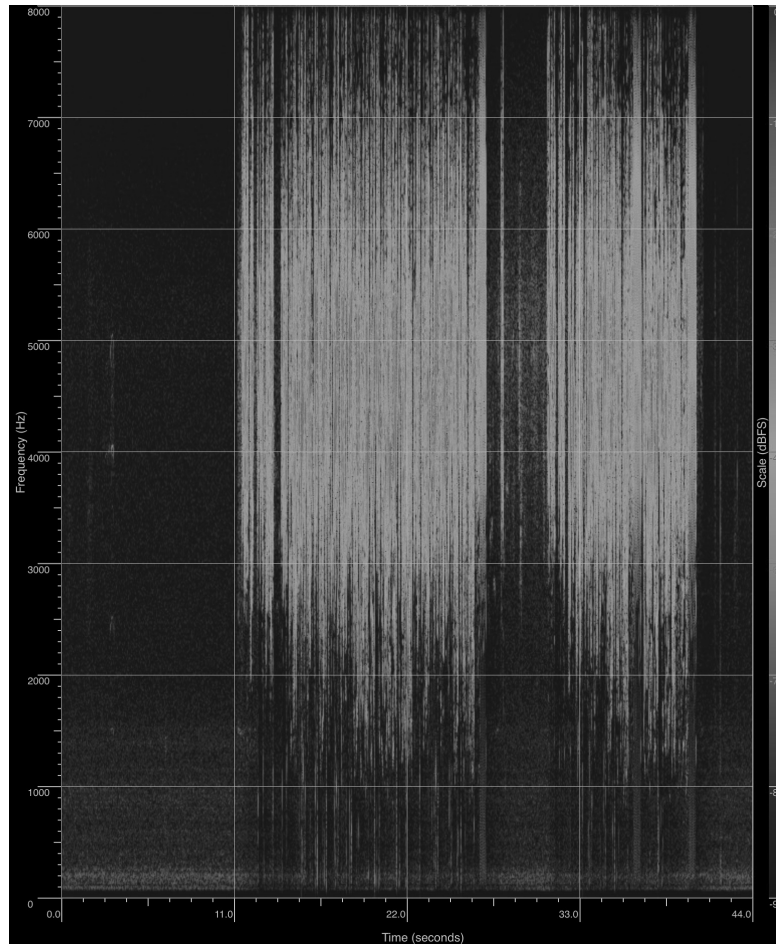
JAN FEB MAR APR MAY JUN JUL AUG SEP OCT NOV DEC

systems



layer of habitat

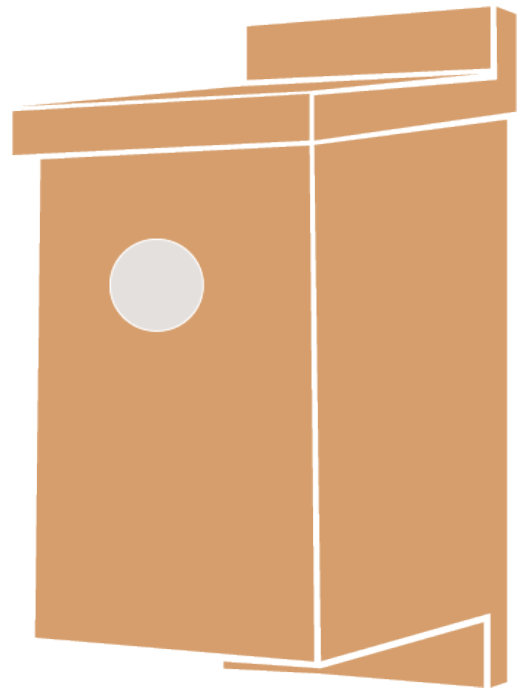
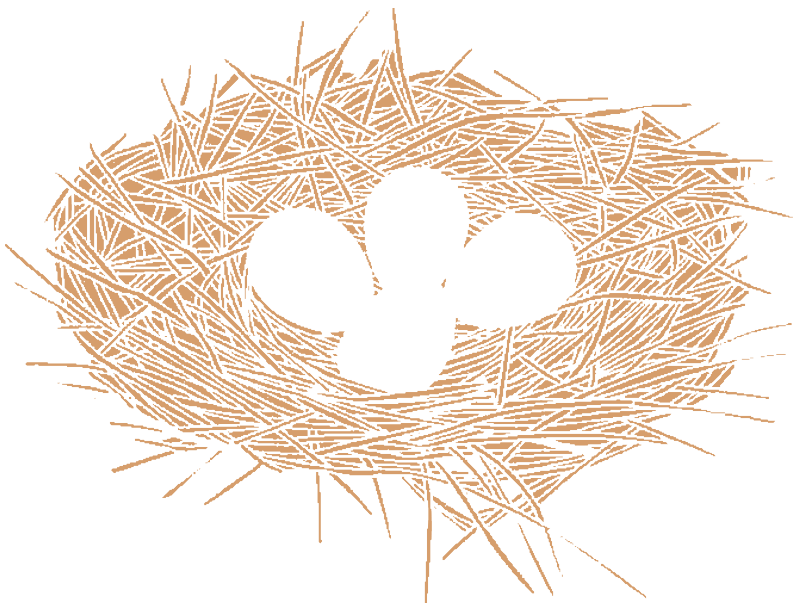




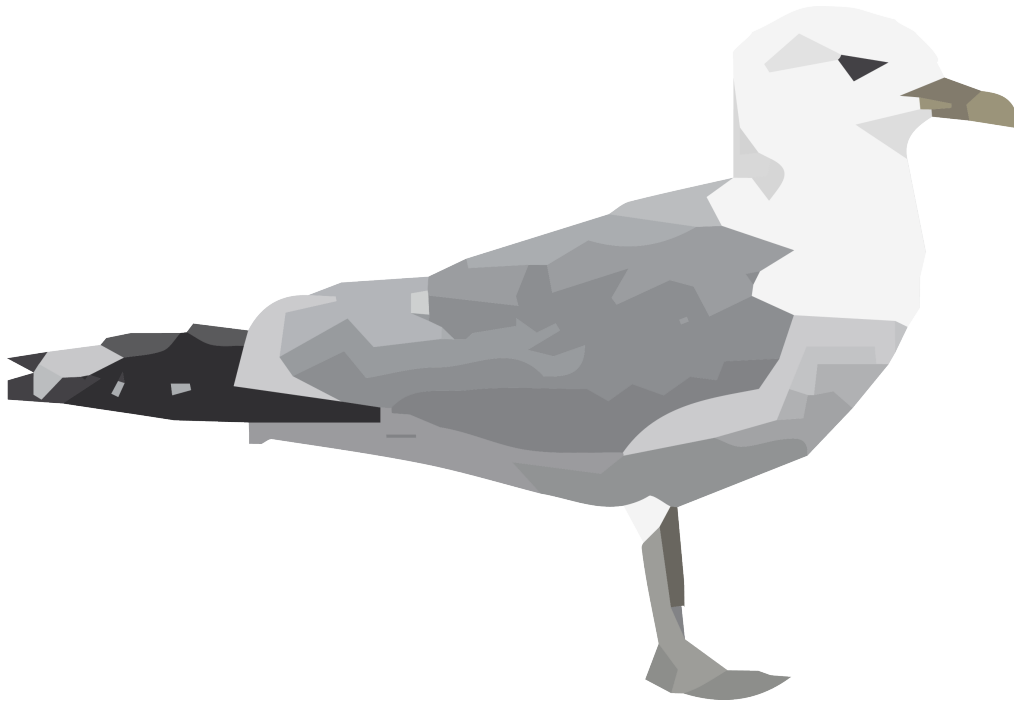
High Pitch & Low Pitch

“kee-weet”

Sharp



Cup nest / Bird house



*Larus canus*  
(Common Gull)

*size*

40-42 cm

*season*

JAN FEB MAR APR MAY JUN JUL AUG SEP OCT NOV DEC

*systems*

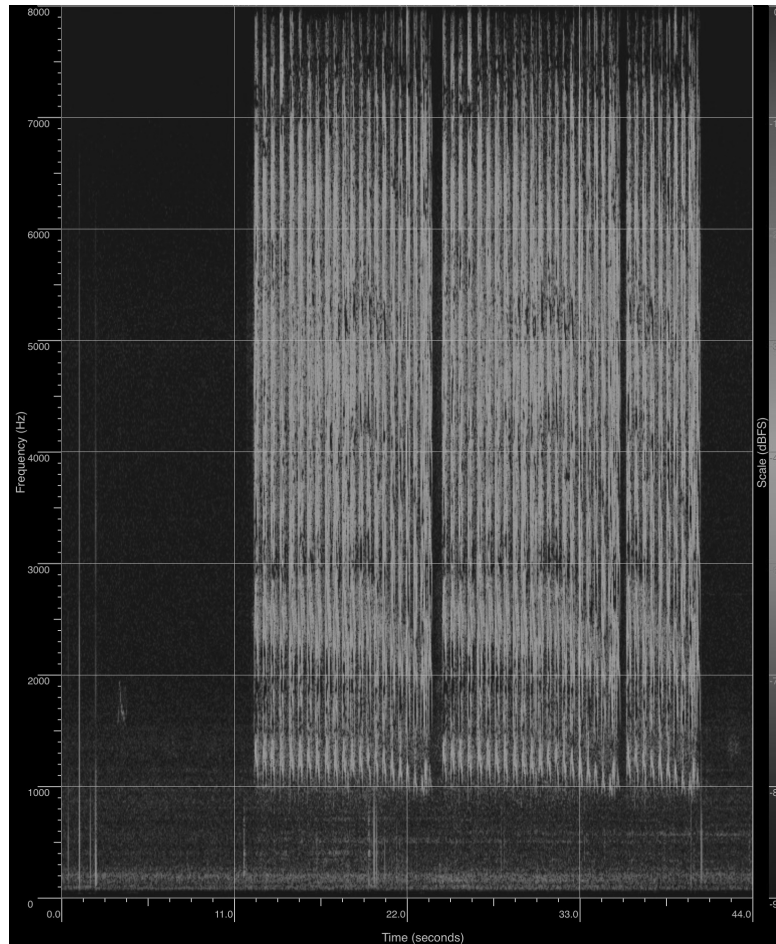


*layer of habitat*





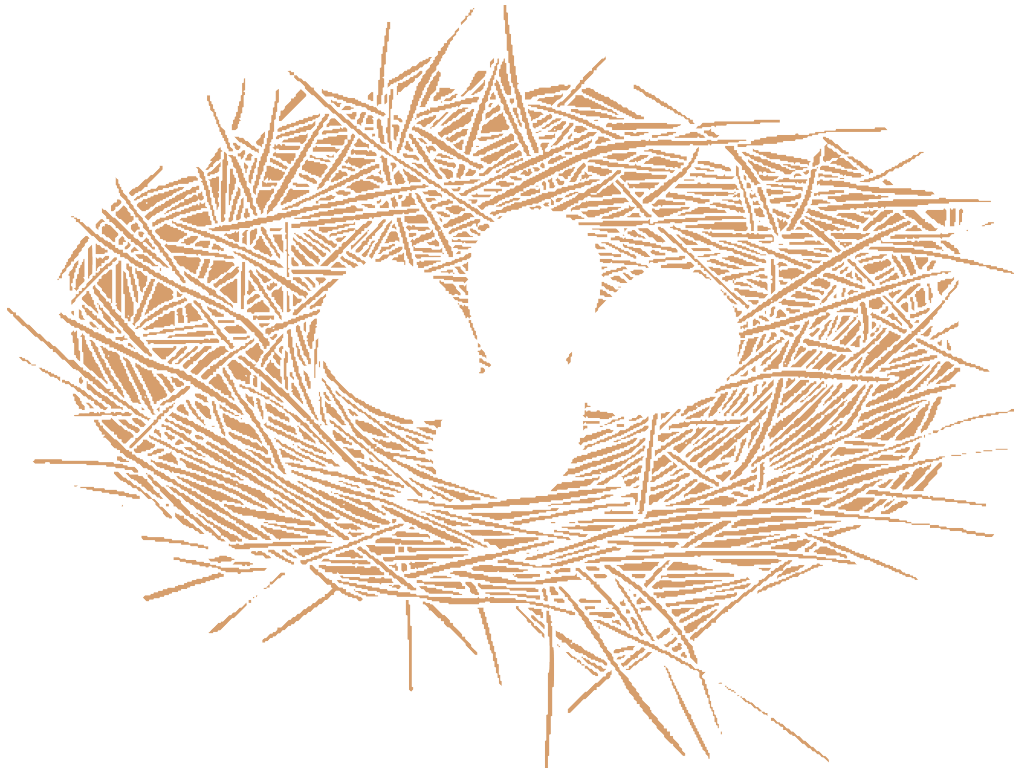




High Pitch & Low Pitch

“mew”

Continuous



CUP Nest  
(Gound)



*Passer domesticus*  
(House Sparrow)

*size*

14-15cm

*season*

JAN FEB MAR APR MAY JUN JUL AUG SEP OCT NOV DEC

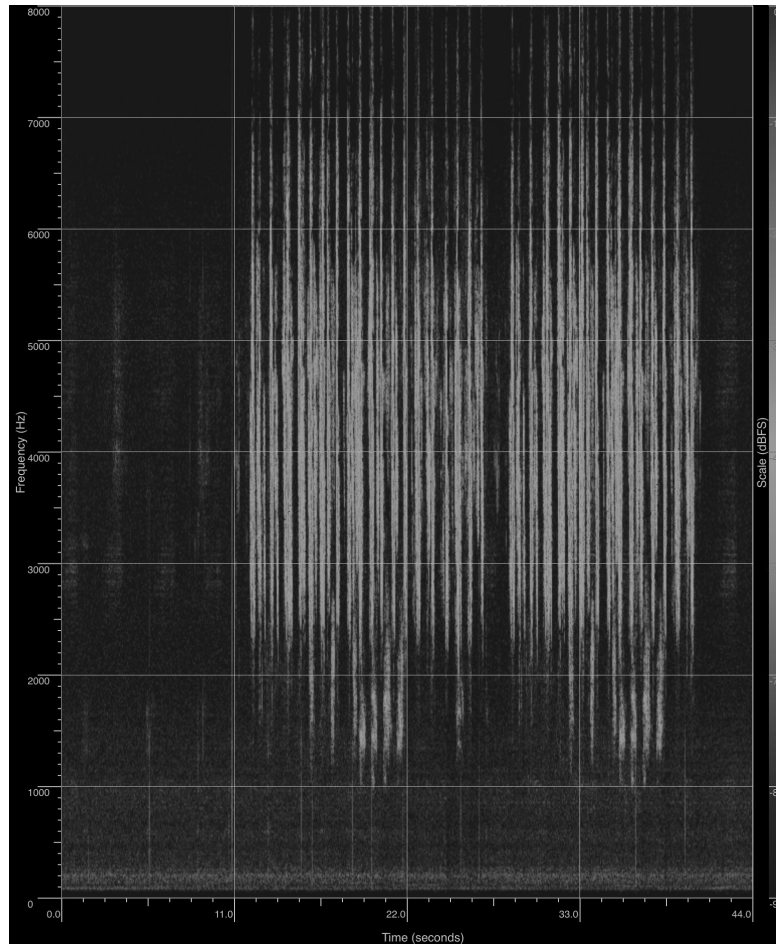
*systems*



*layer of habitat*

<-?

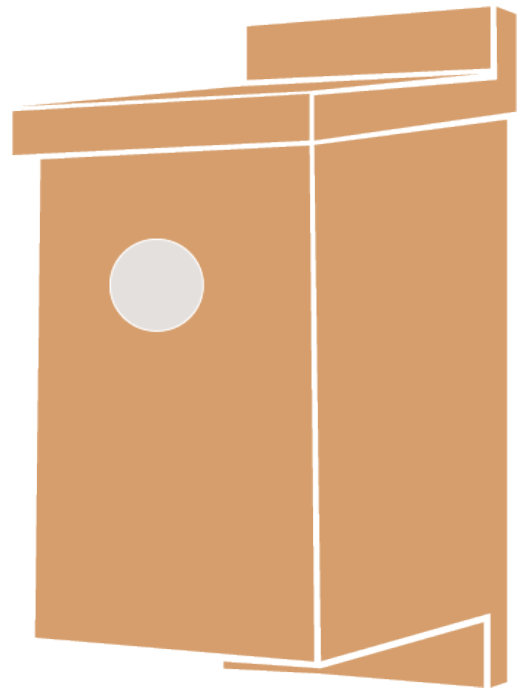
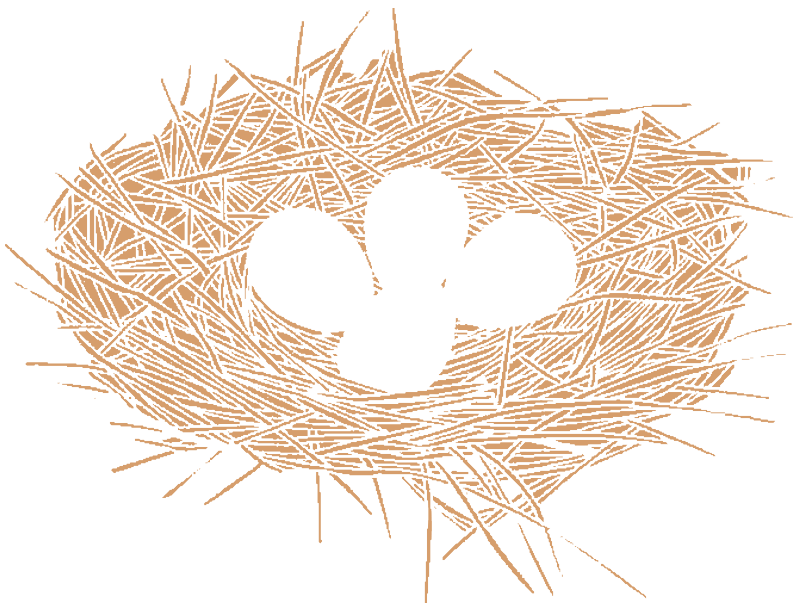




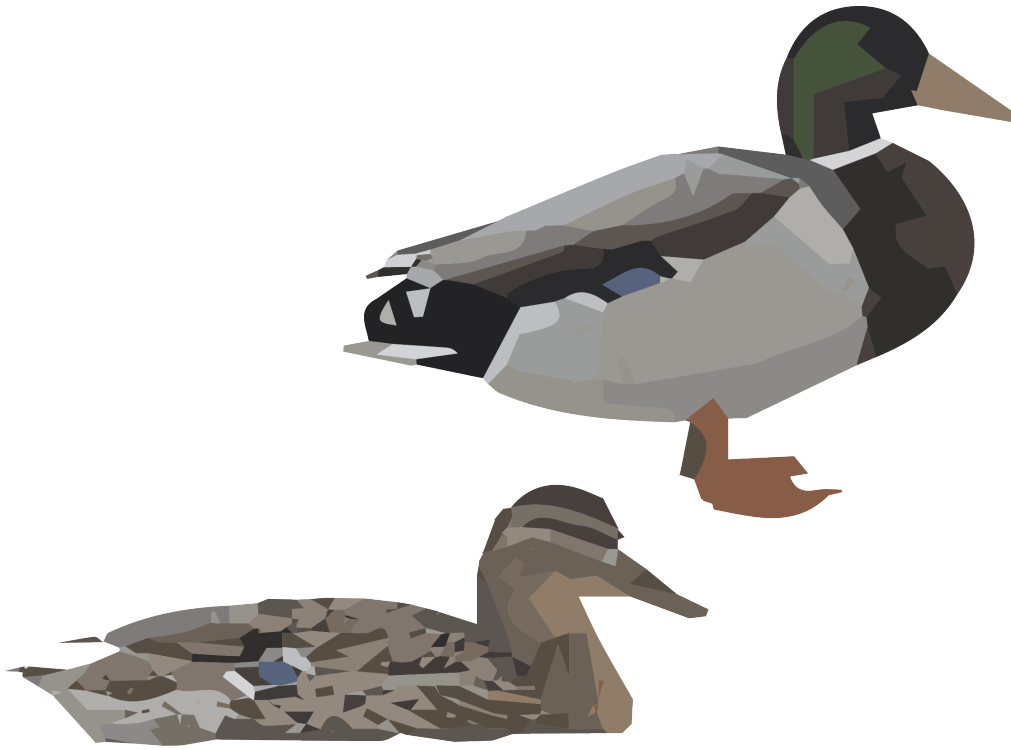
High Pitch & Low Pitch

“chilp”

Raucous



Cup nest / Bird house



*Anas platyrhynchos*  
(Mallard)

*size* 50-65 cm

*season* JAN FEB MAR APR MAY JUN JUL AUG SEP OCT NOV DEC

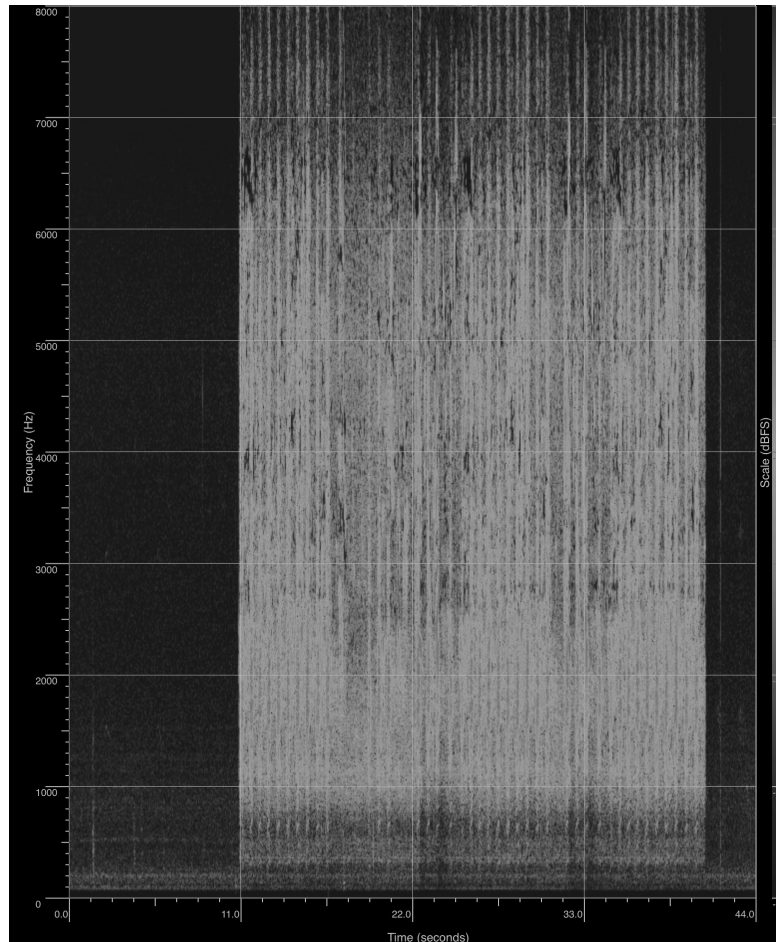
*systems*



*layer of habitat*



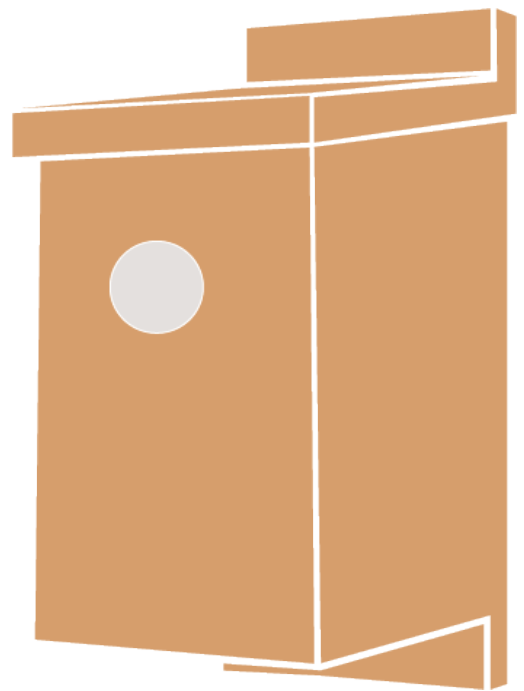
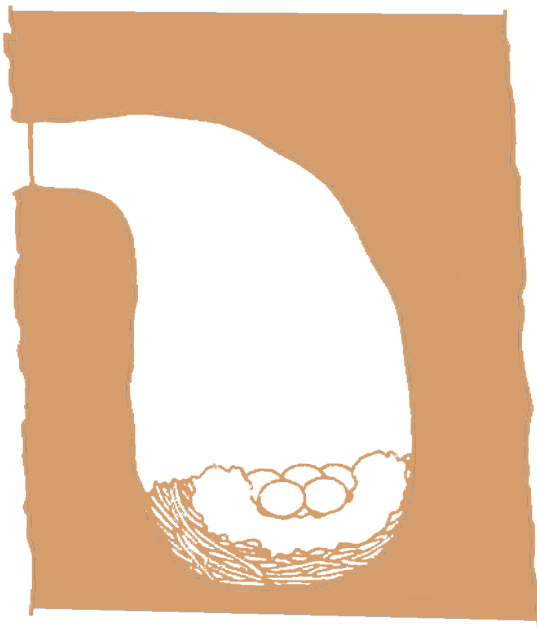




High Pitch & Low Pitch

“riib”

short whistle



Found tree house.Bird box(Diameter of entrance:1.1 inches)



*Pica pica*  
(Magpie)

*size*

44-46 cm

*season*

JAN FEB MAR APR MAY JUN JUL AUG SEP OCT NOV DEC

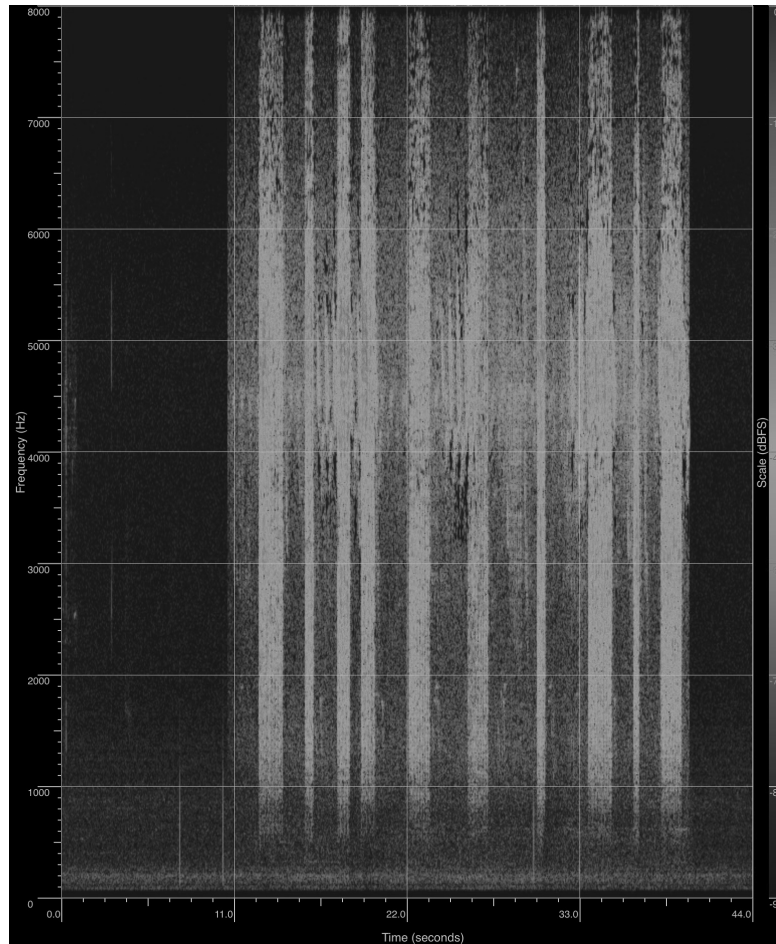
<-native wor. so should be all?

*systems*



*layer of habitat*

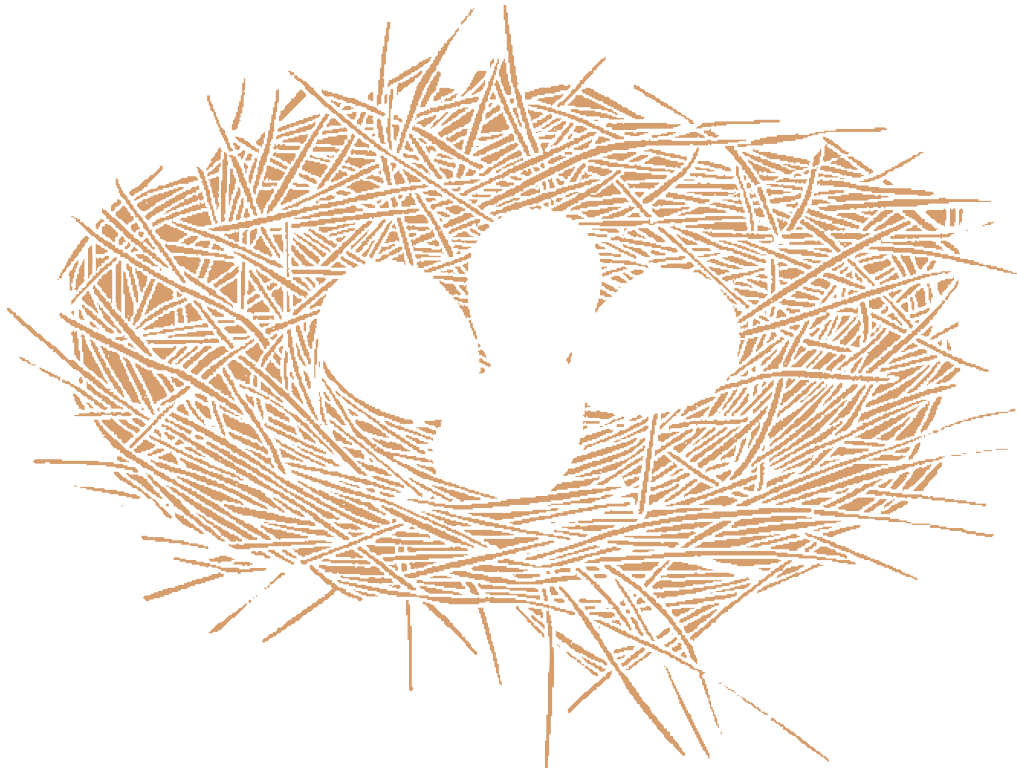




High Pitch & Low Pitch

“chechecheche”

Harsh



CUP Nest  
(Gound)



*Prunella modularis*  
(Dunnock)

*size*

13-14 cm

*season*

JAN FEB MAR APR MAY JUN JUL AUG SEP OCT NOV DEC <-migrant breeding

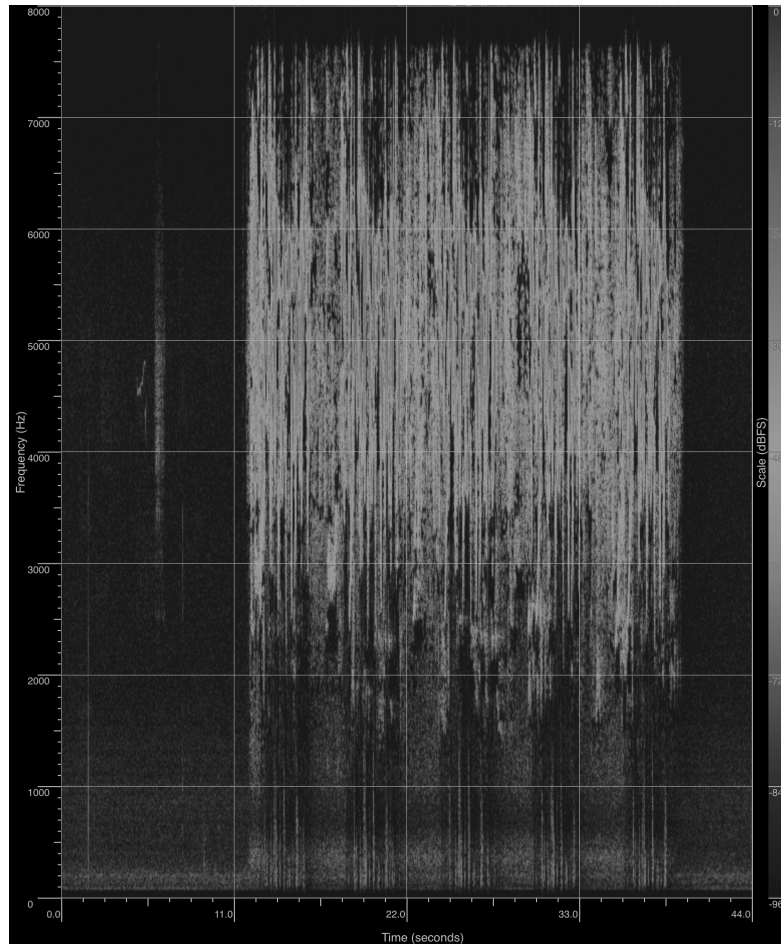
*systems*



*layer of habitat*



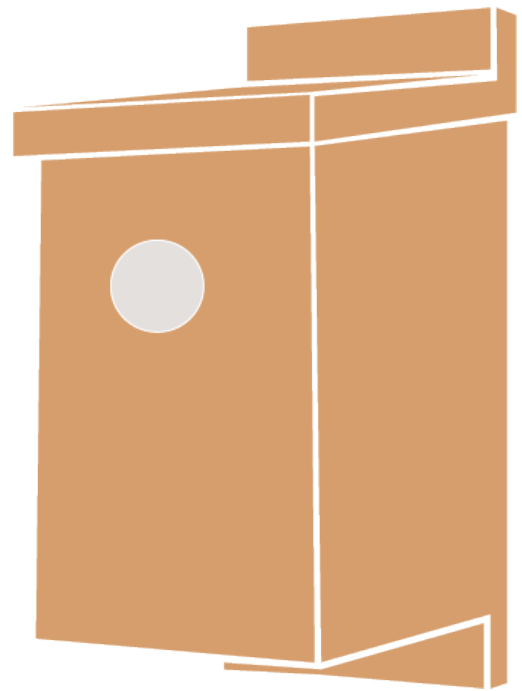
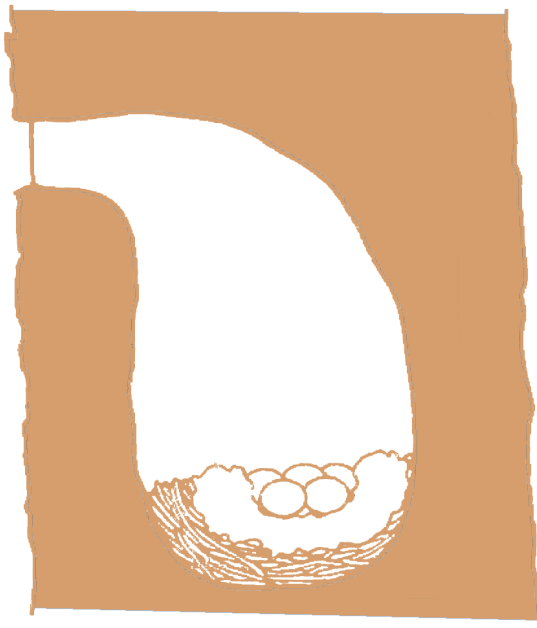




High Pitch & Low Pitch

“trrrrrrrrrzeep”

Dry



Found tree house.Bird box(Diameter of entrance:1.3inches)



*Sitta europaea*  
(Nuthatch)

*size*

12-14 cm

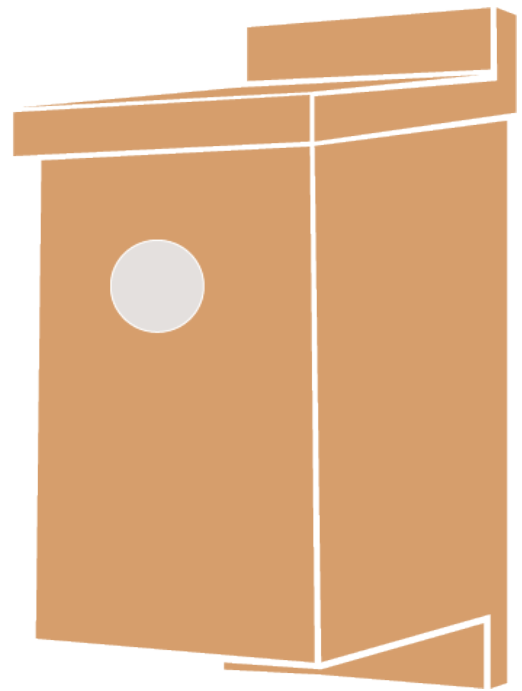
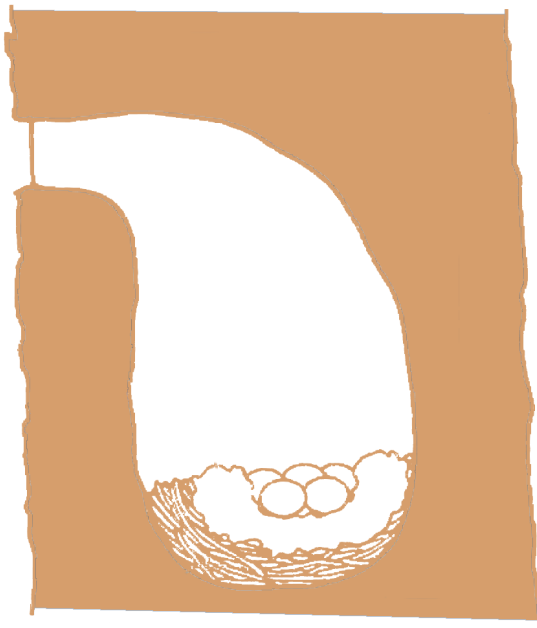
*season*

JAN FEB MAR APR MAY JUN JUL AUG SEP OCT NOV DEC

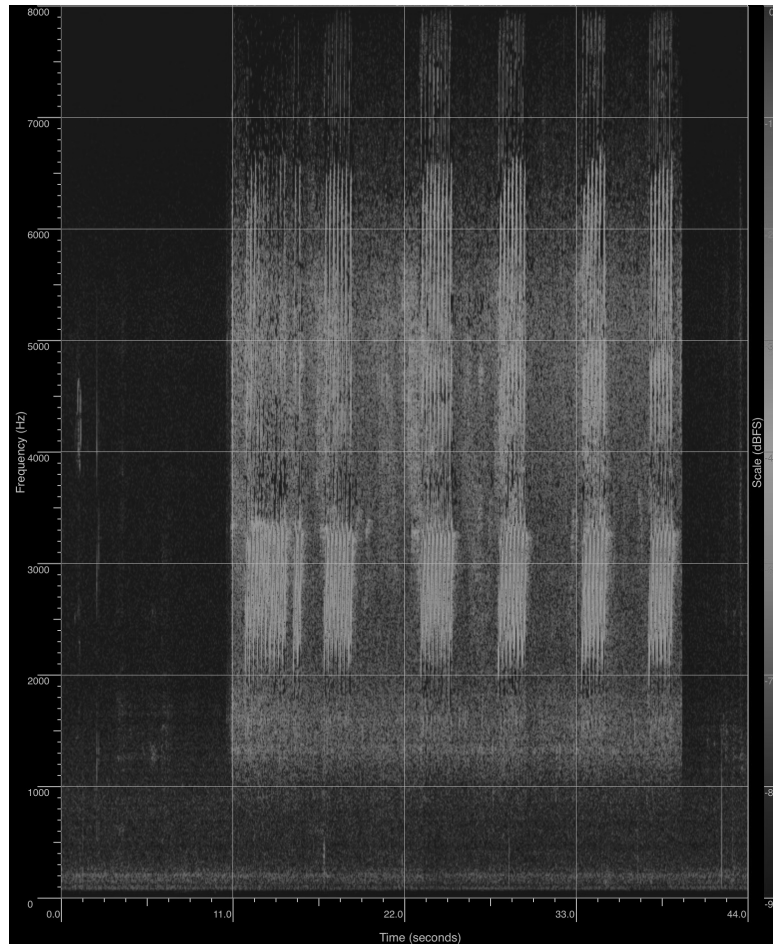
*systems*



*layer of habitat*



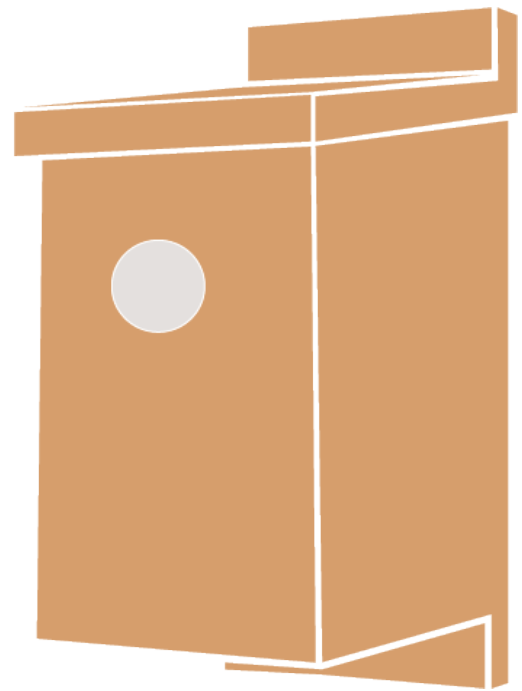
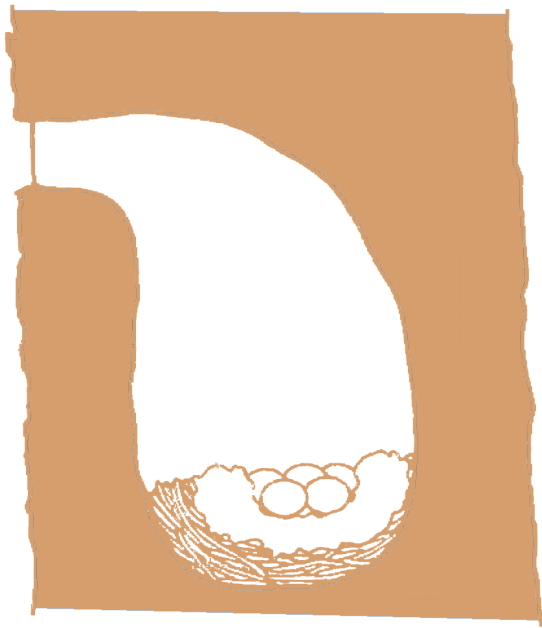
Found tree house. Bird box (Diameter of entrance: 1.3 inches)



High Pitch & Low Pitch

“chwit”

In Rapid Series



Found tree house.Bird box(Diameter of entrance:6inches)



*Strix aluco*  
(Tawny Owl)

*size* 37-39 cm

*season* JAN FEB MAR APR MAY JUN JUL AUG SEP OCT NOV DEC

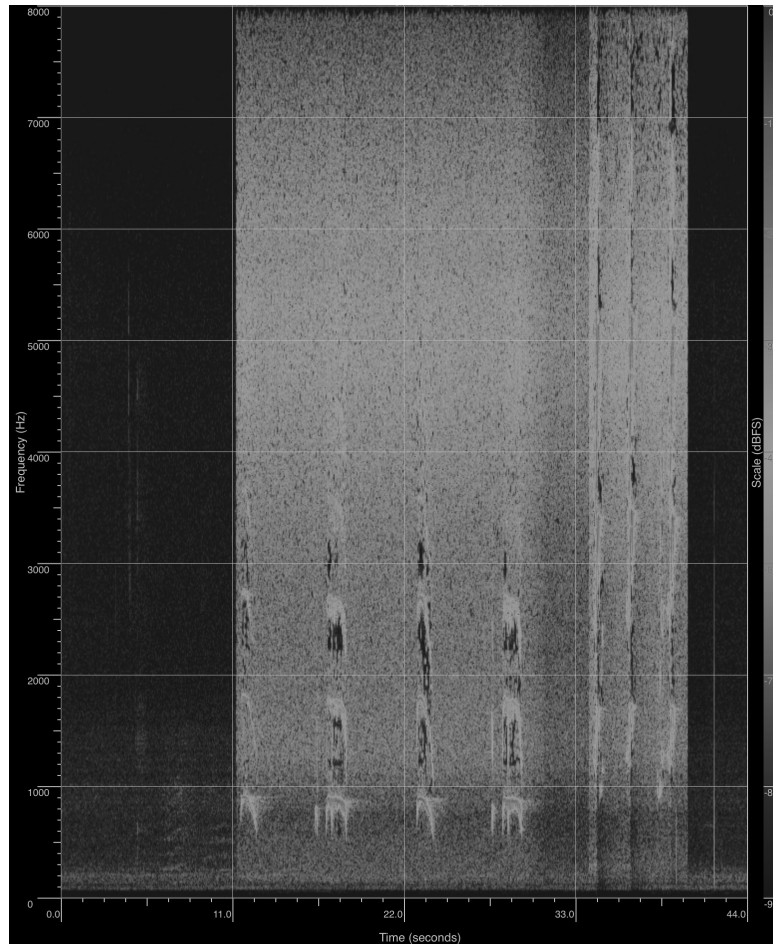
*systems*

*layer of habitat*





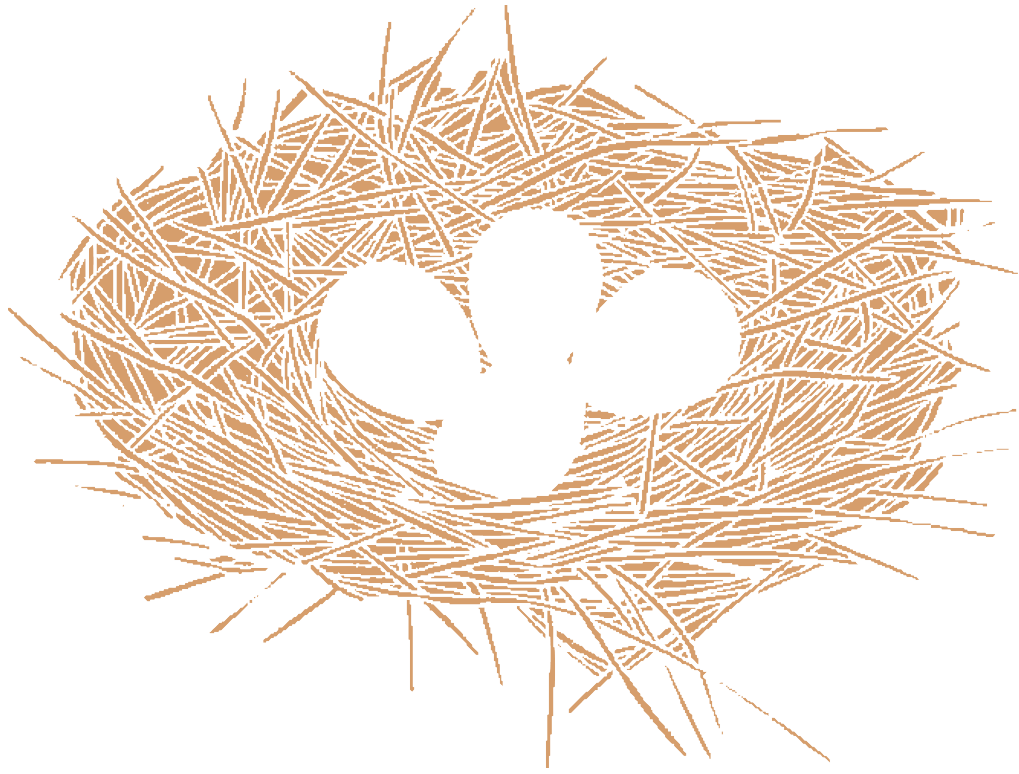




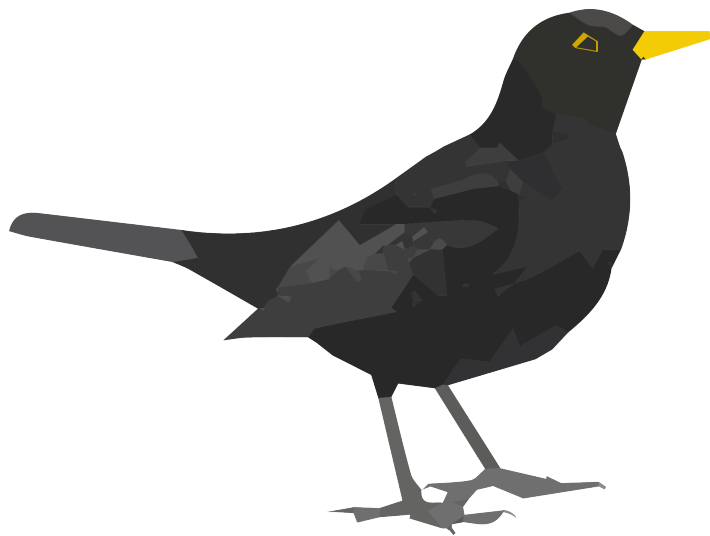
High Pitch & Low Pitch

“hooooo”

Sharp



Cup Nest



*Turdus merula*  
(Blackbird)

*size*

24-25 cm

*season*

JAN FEB MAR APR MAY JUN JUL AUG SEP OCT NOV DEC

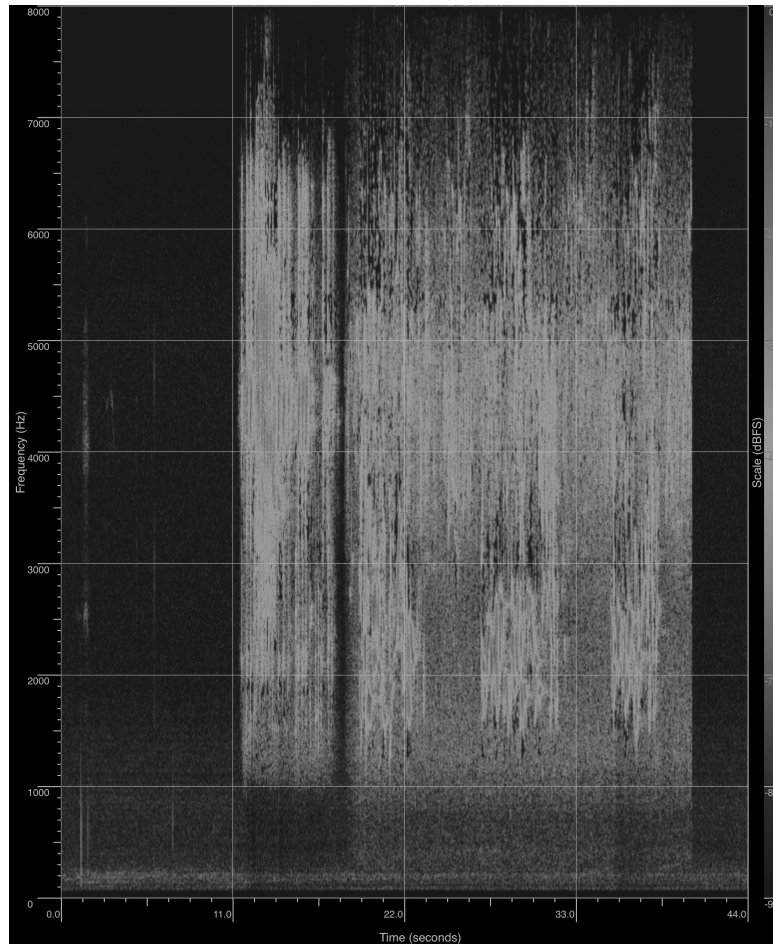
*systems*



*layer of habitat*

<- not sure

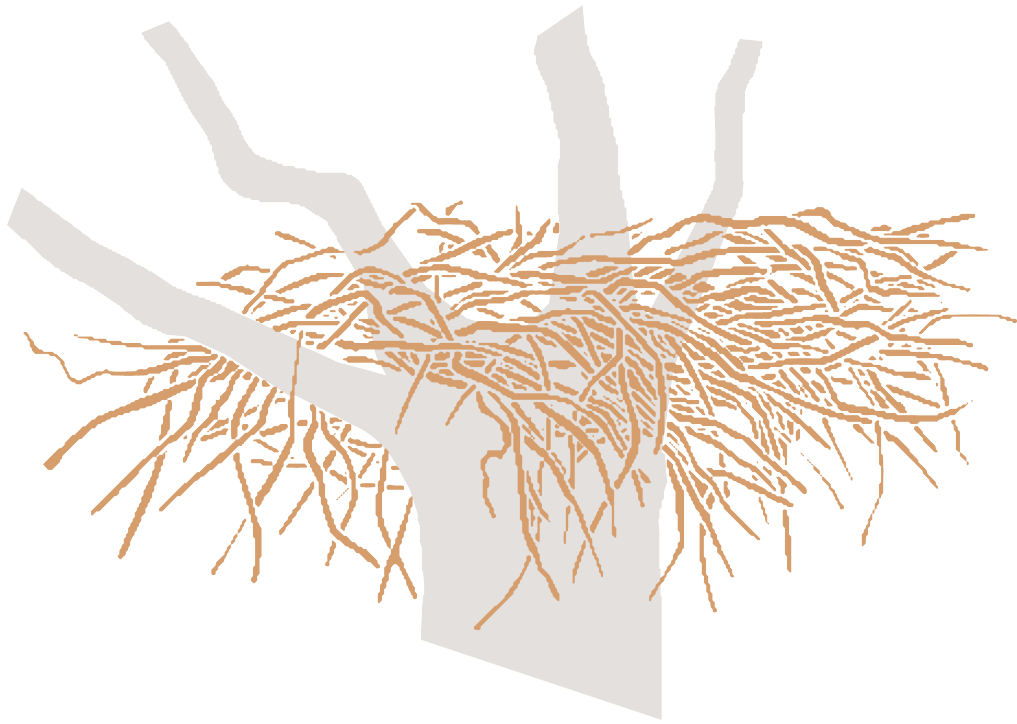




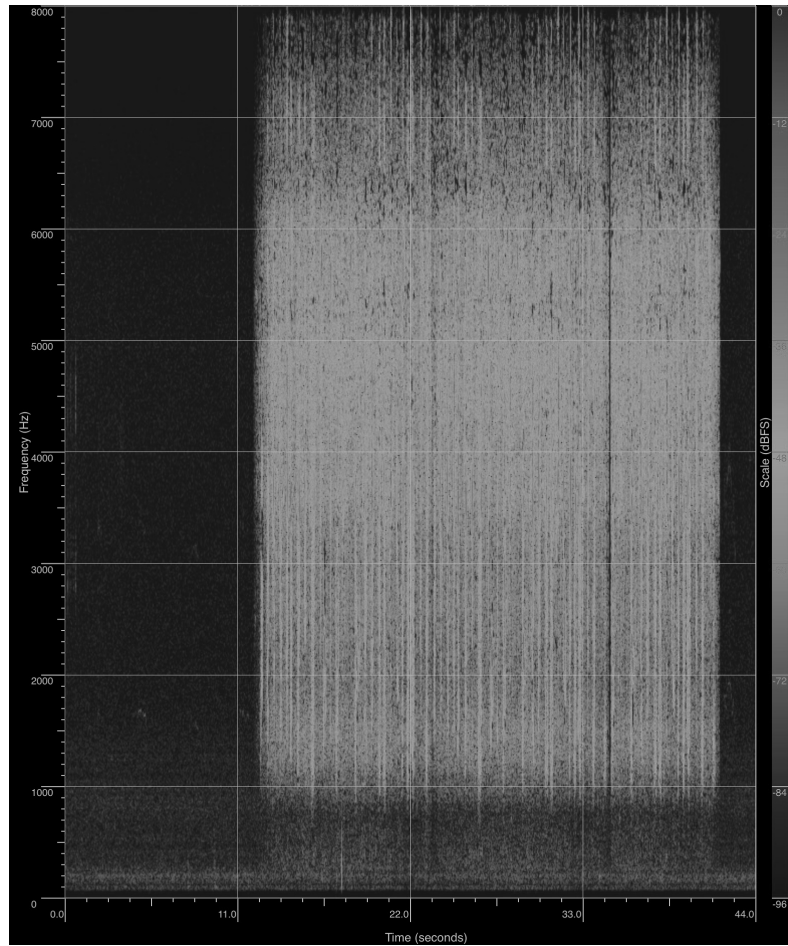
High Pitch & Low Pitch

“srrreee”

Thin



Platform nest



High Pitch & Low Pitch

“zrreet”

Short and Metallic



