

Memorial Landscape

Resilience through Time and landscape

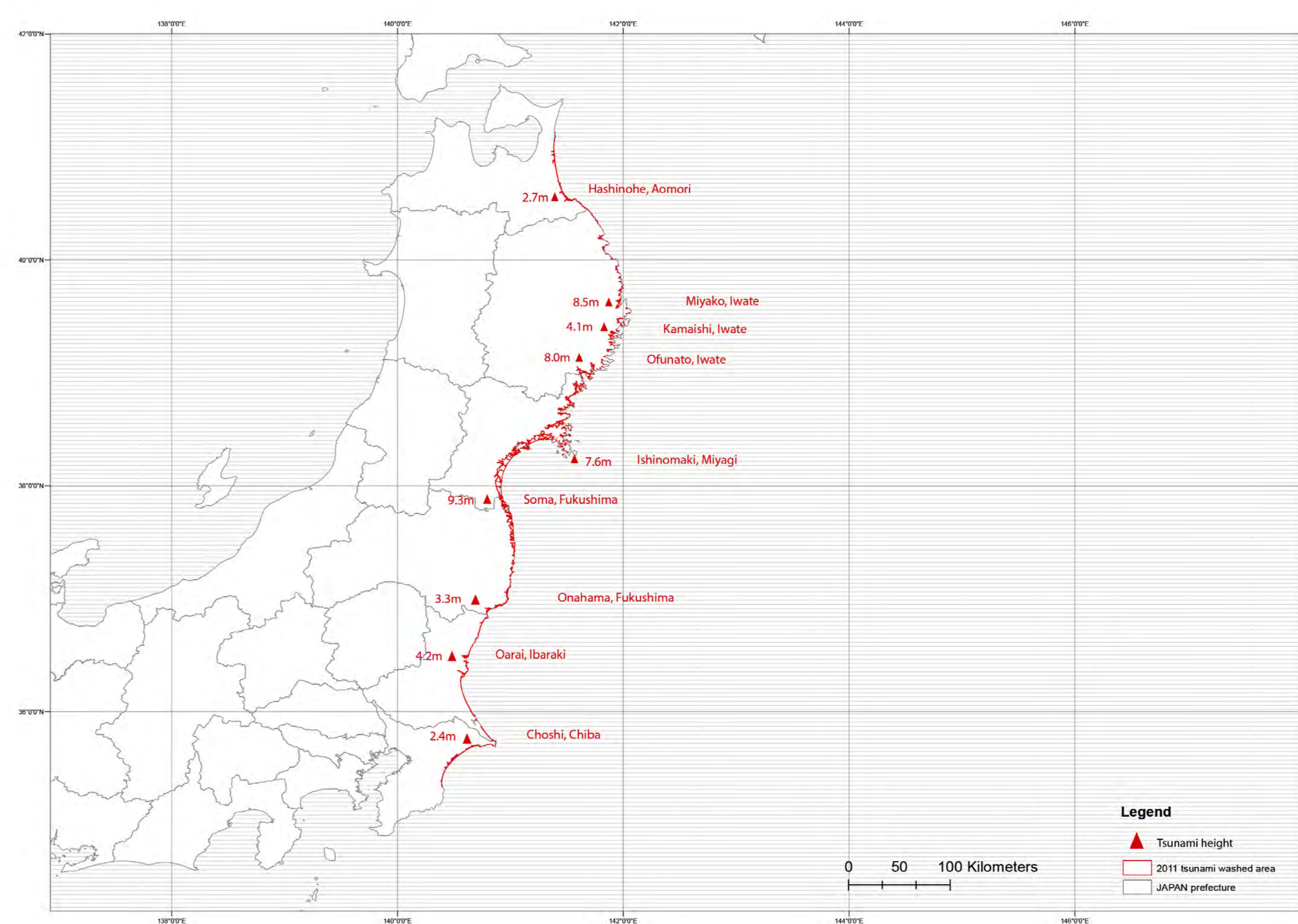
Location:

Japan Map:

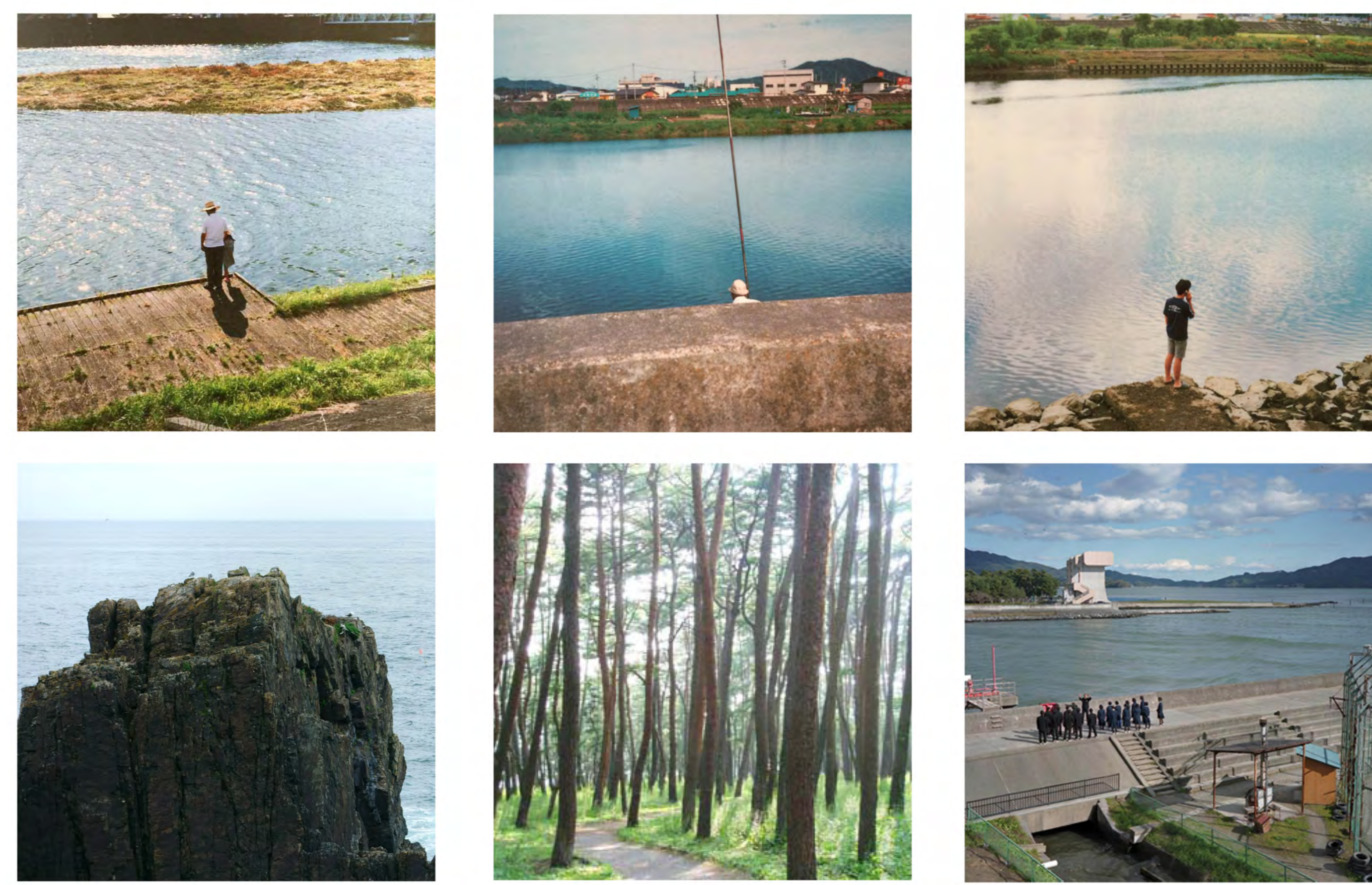


History map

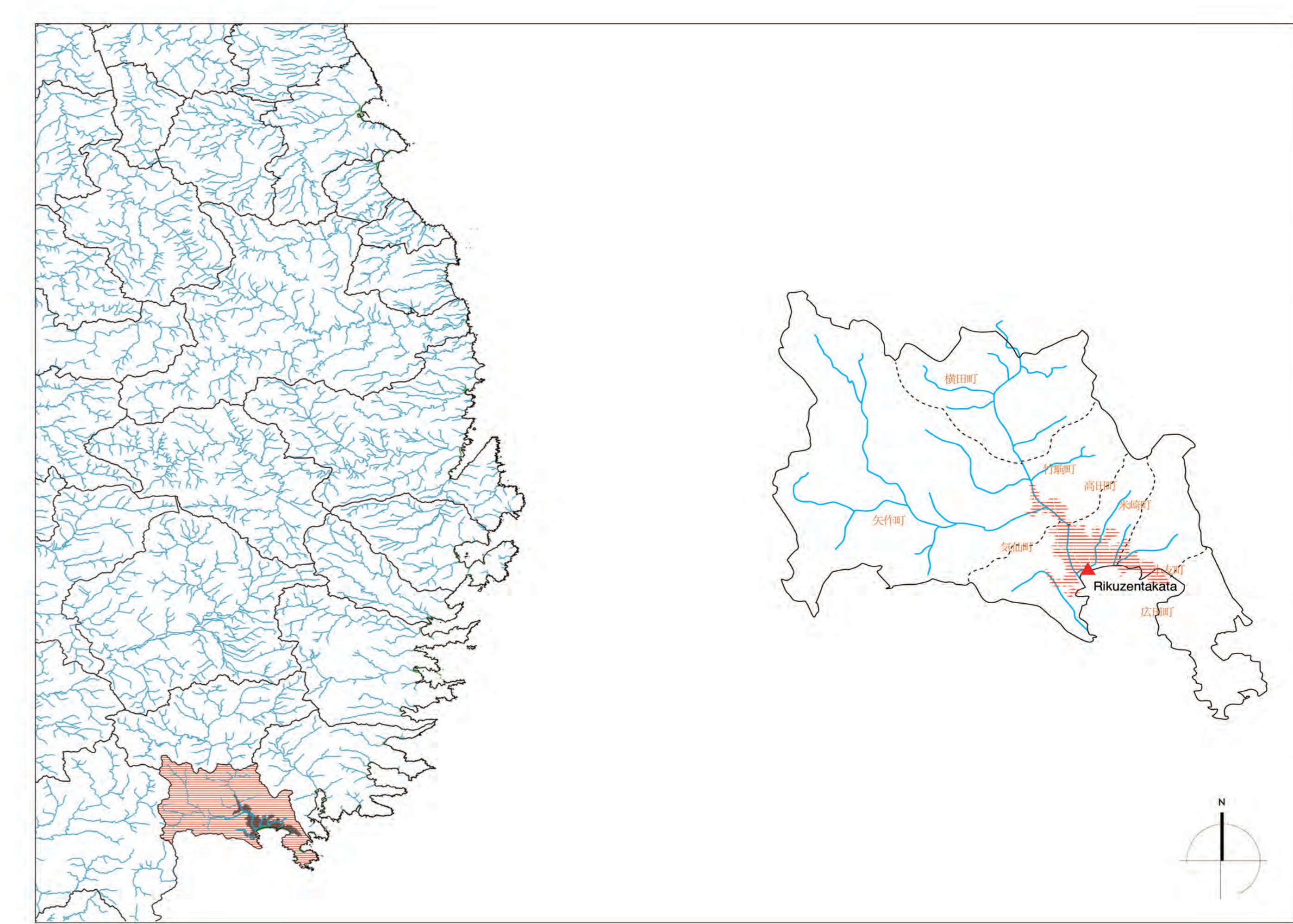
Washed coast line



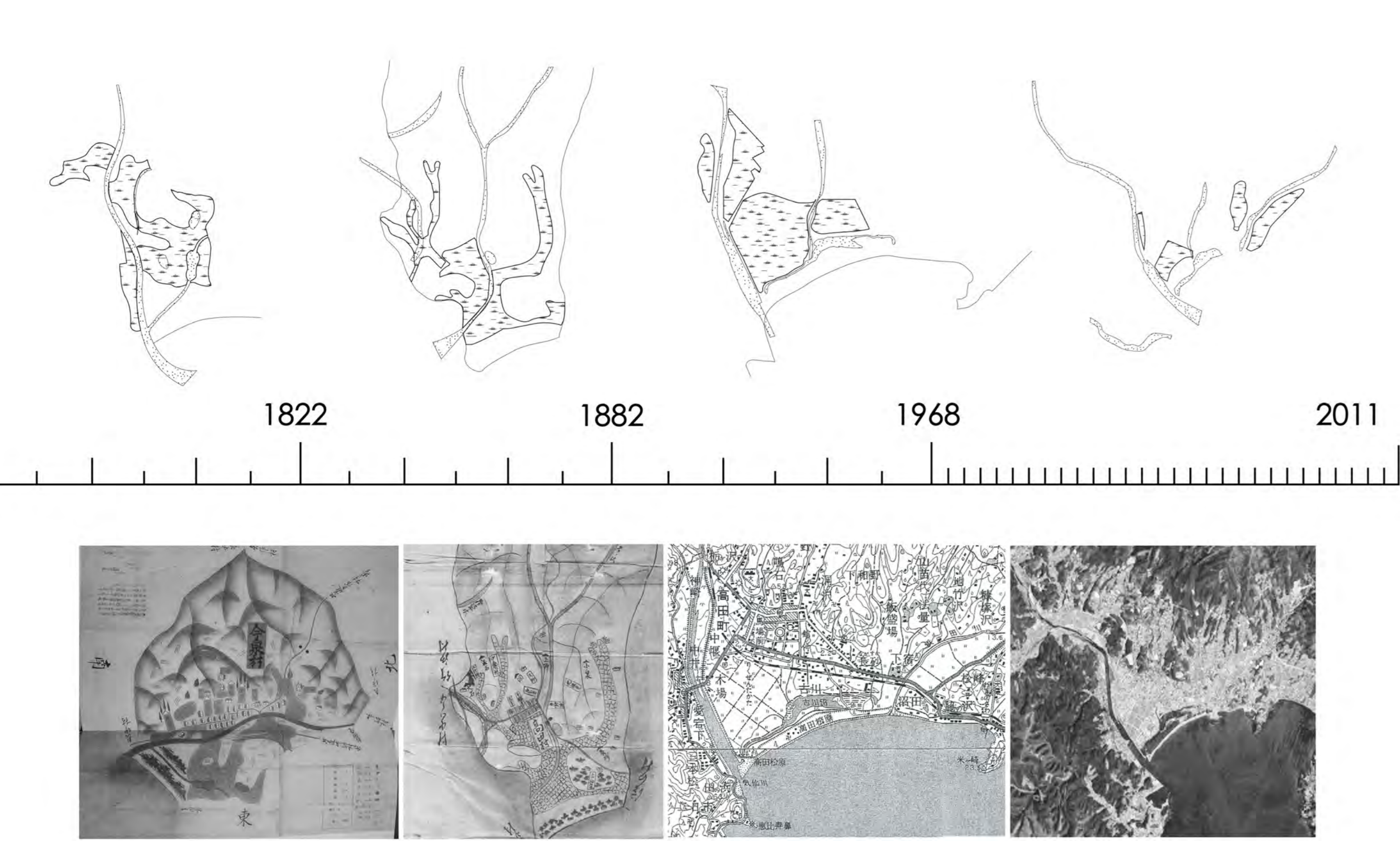
Old photo



Regional scale

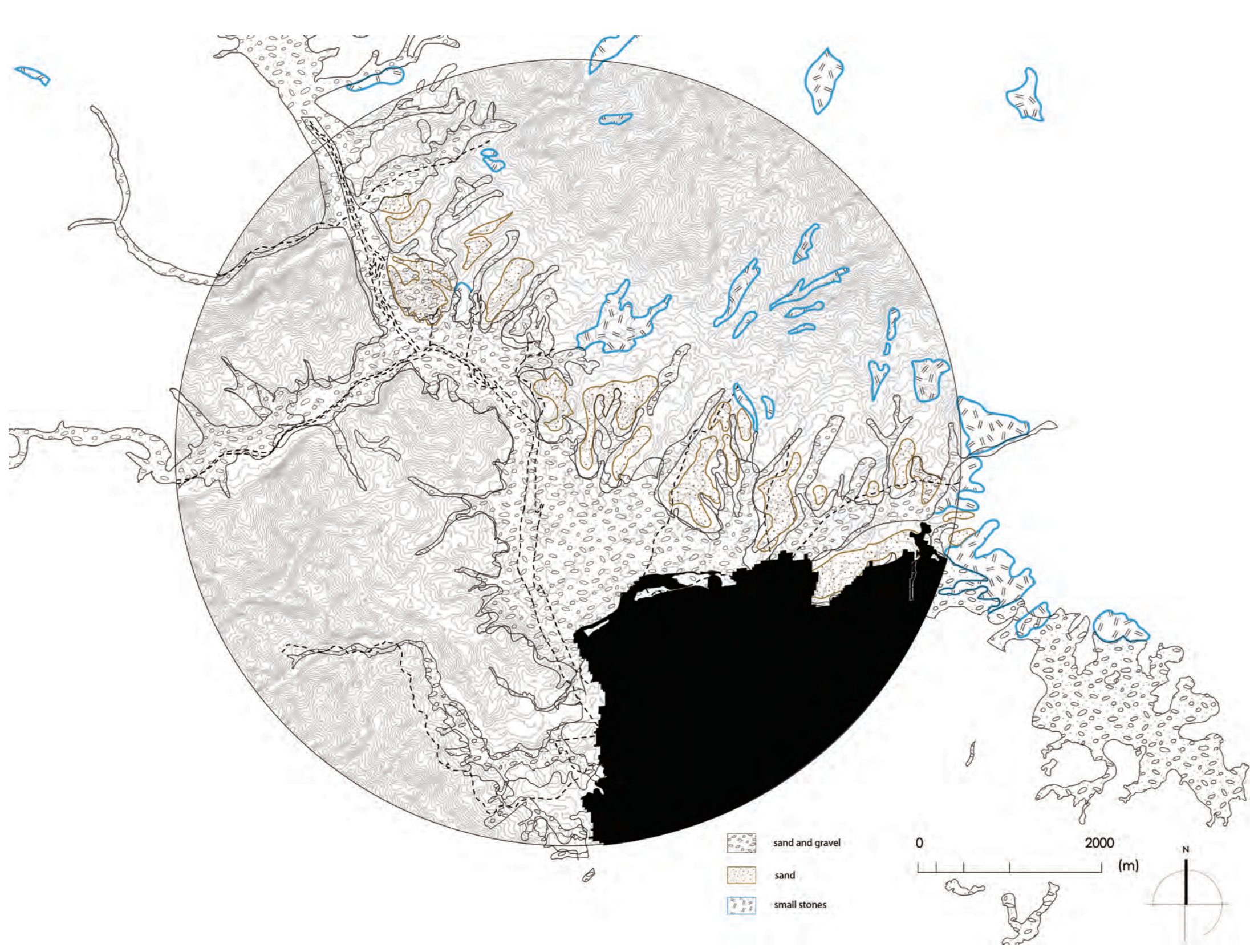


Current situation

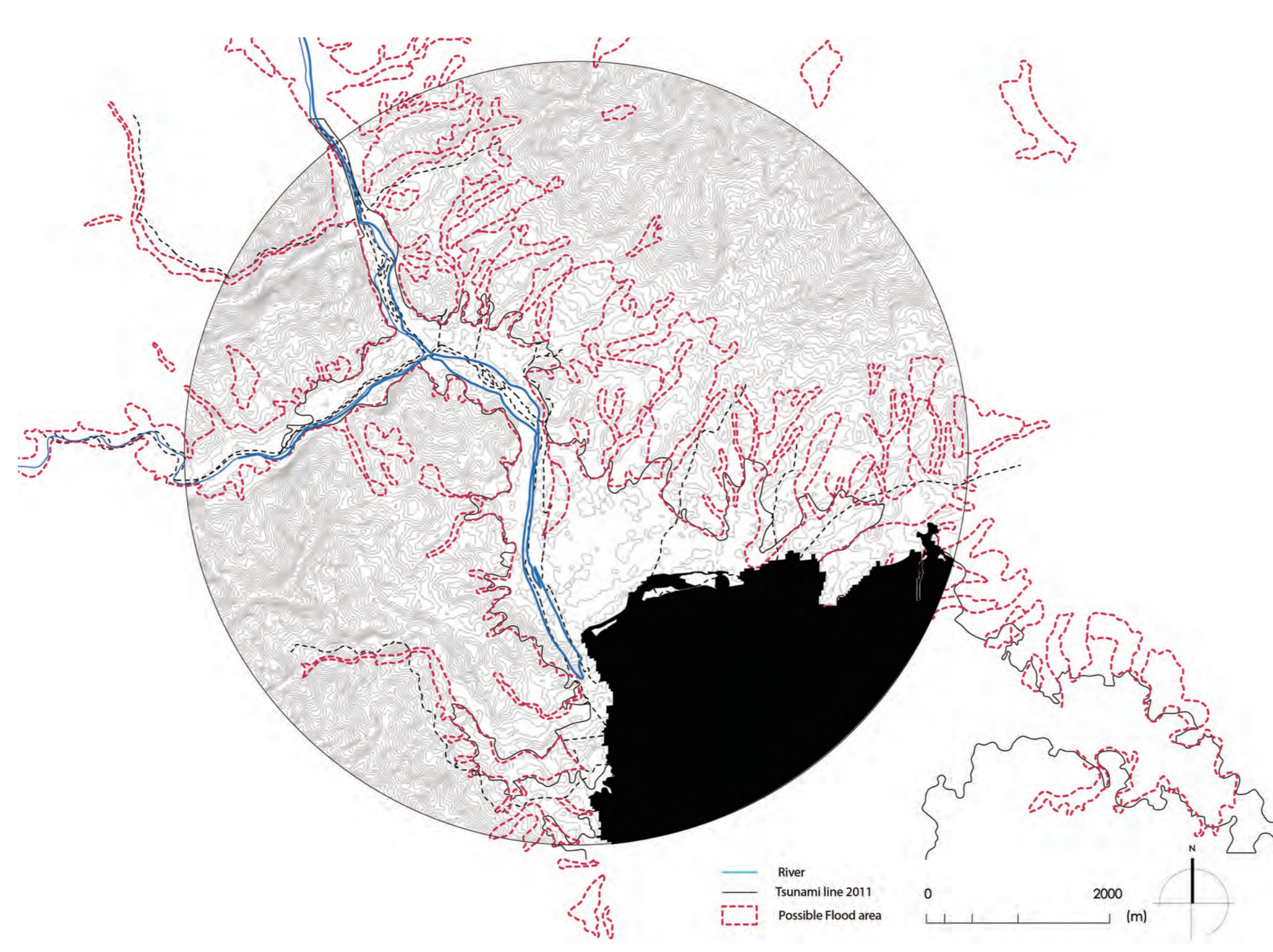


Surface Analysis

Surface occupation



Possible flood area

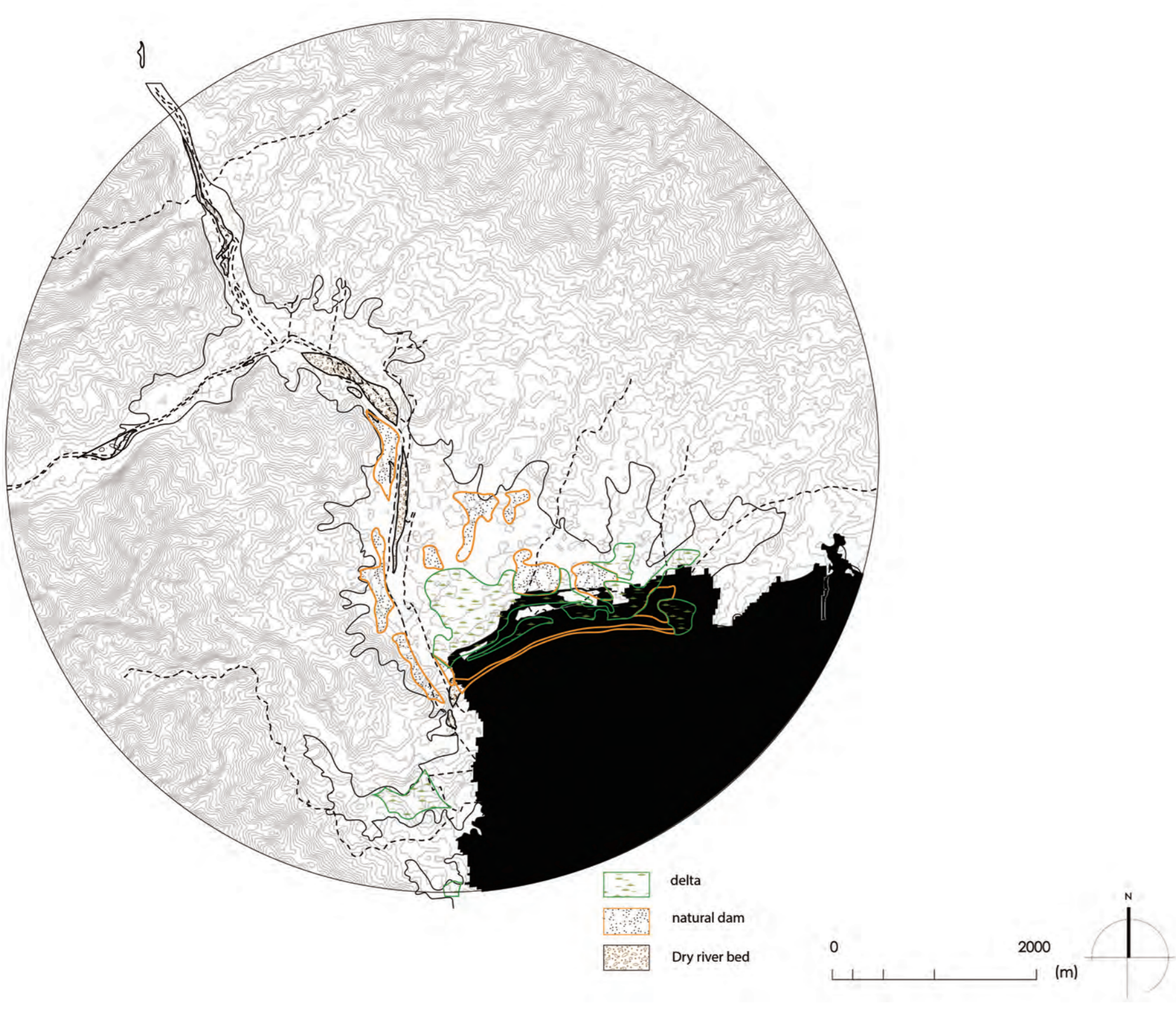


The project is based on 2011 Tohoku earthquake and tsunami in Japan, and aims at building a landscape that evokes the memory of the past in Rikuzentakata area, and contributes to delaying the unpredictable tsunami in the future.

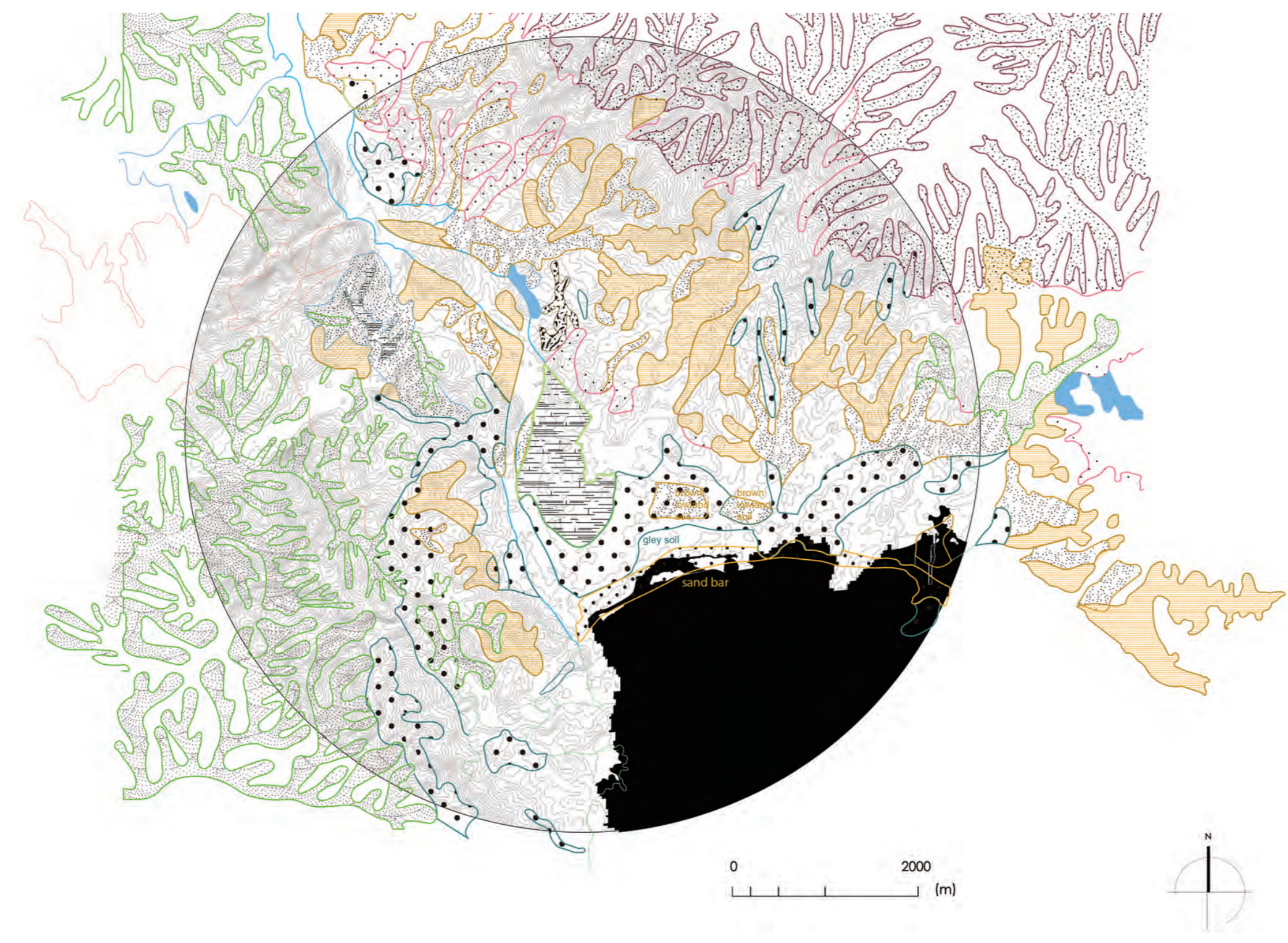
The water: The proposal introduces a strategy of "changeable landscape" structure that move with water dynamics, using water itself as a design element to shape different memory gardens.

The memory: The art of memory is in relation to the art of garden. The land's memory and individual's memory are collected and transformed into landscape elements for people to experience stories of past and future.

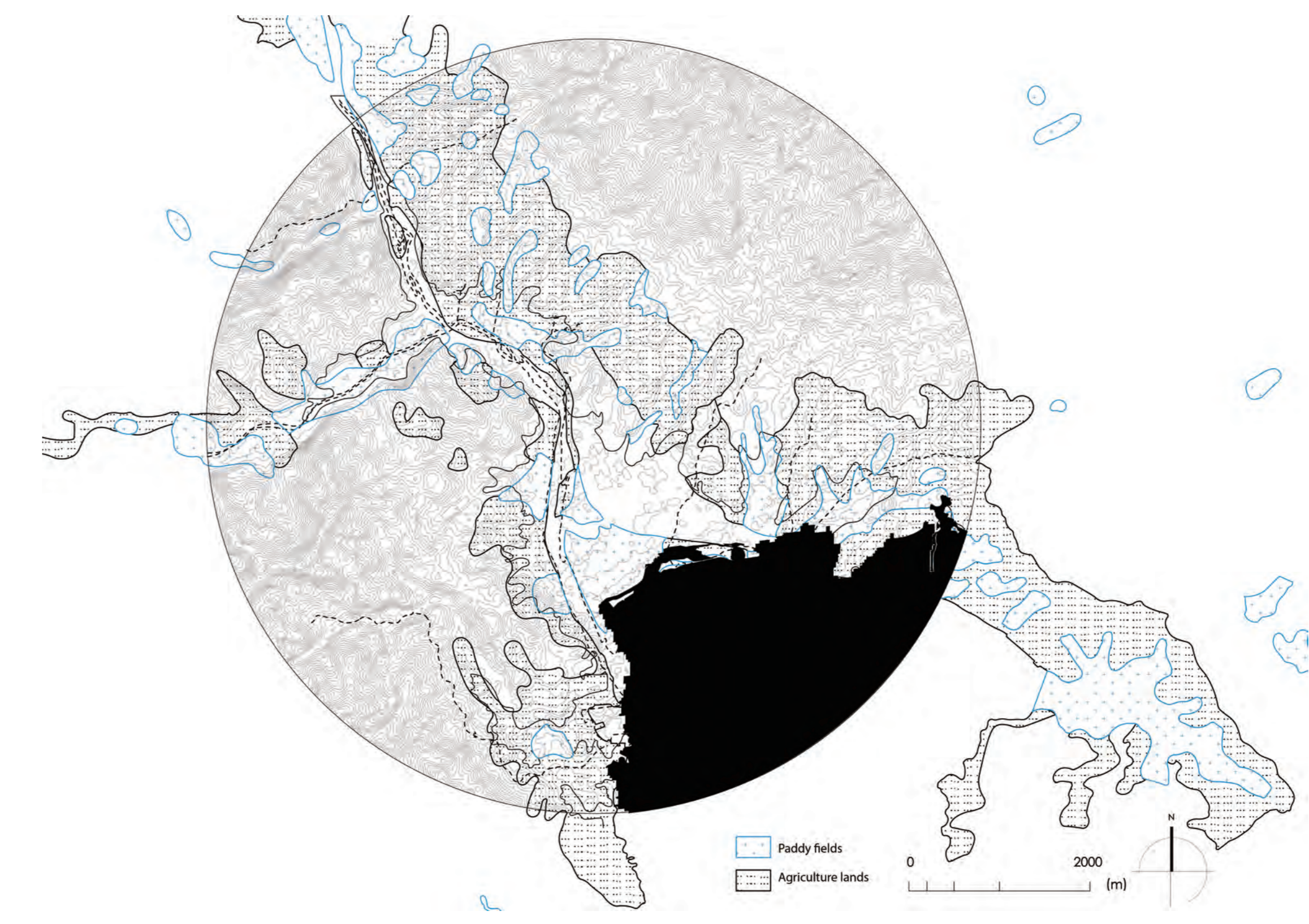
Natural dam and delta



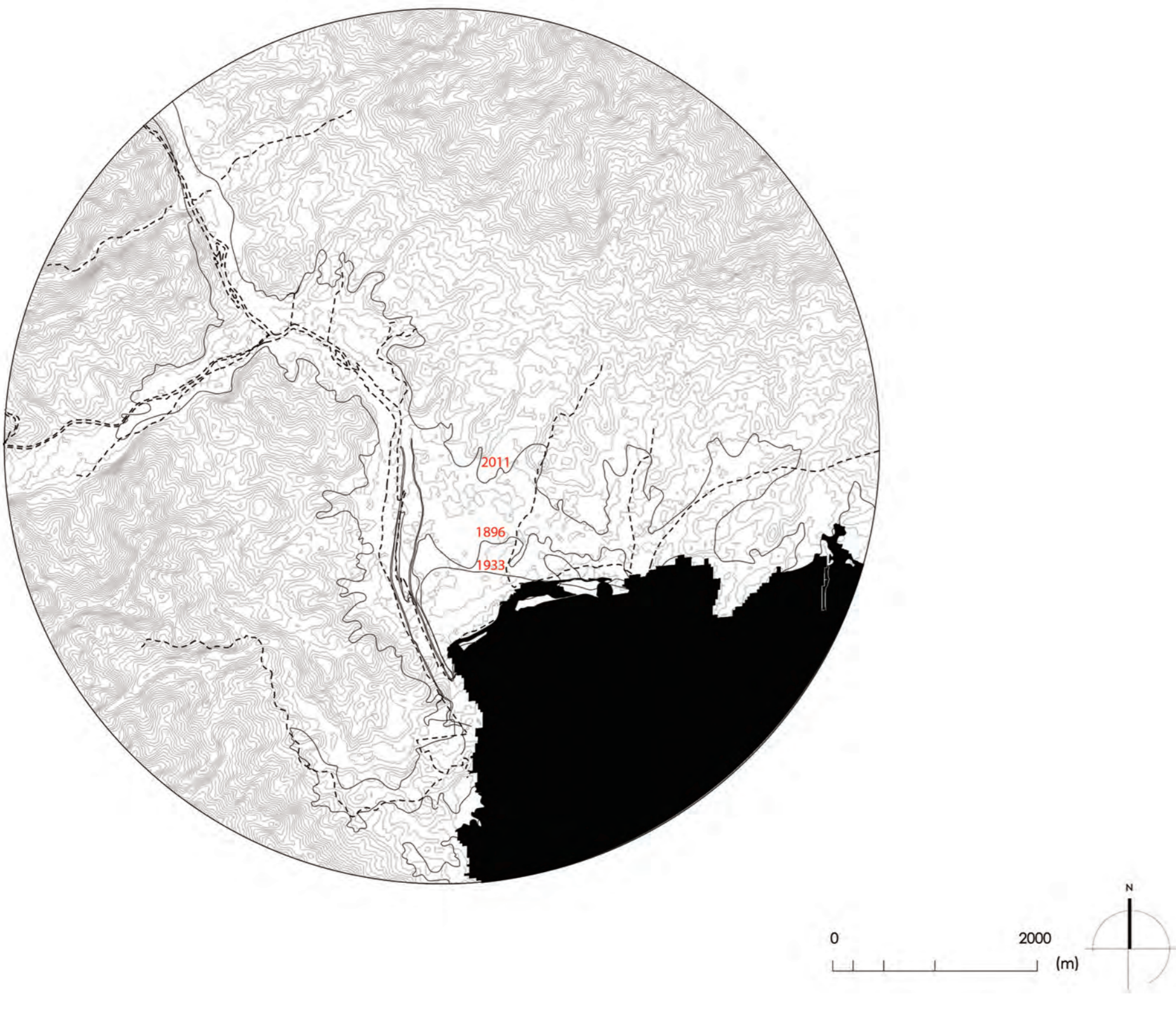
Surface soil analysis



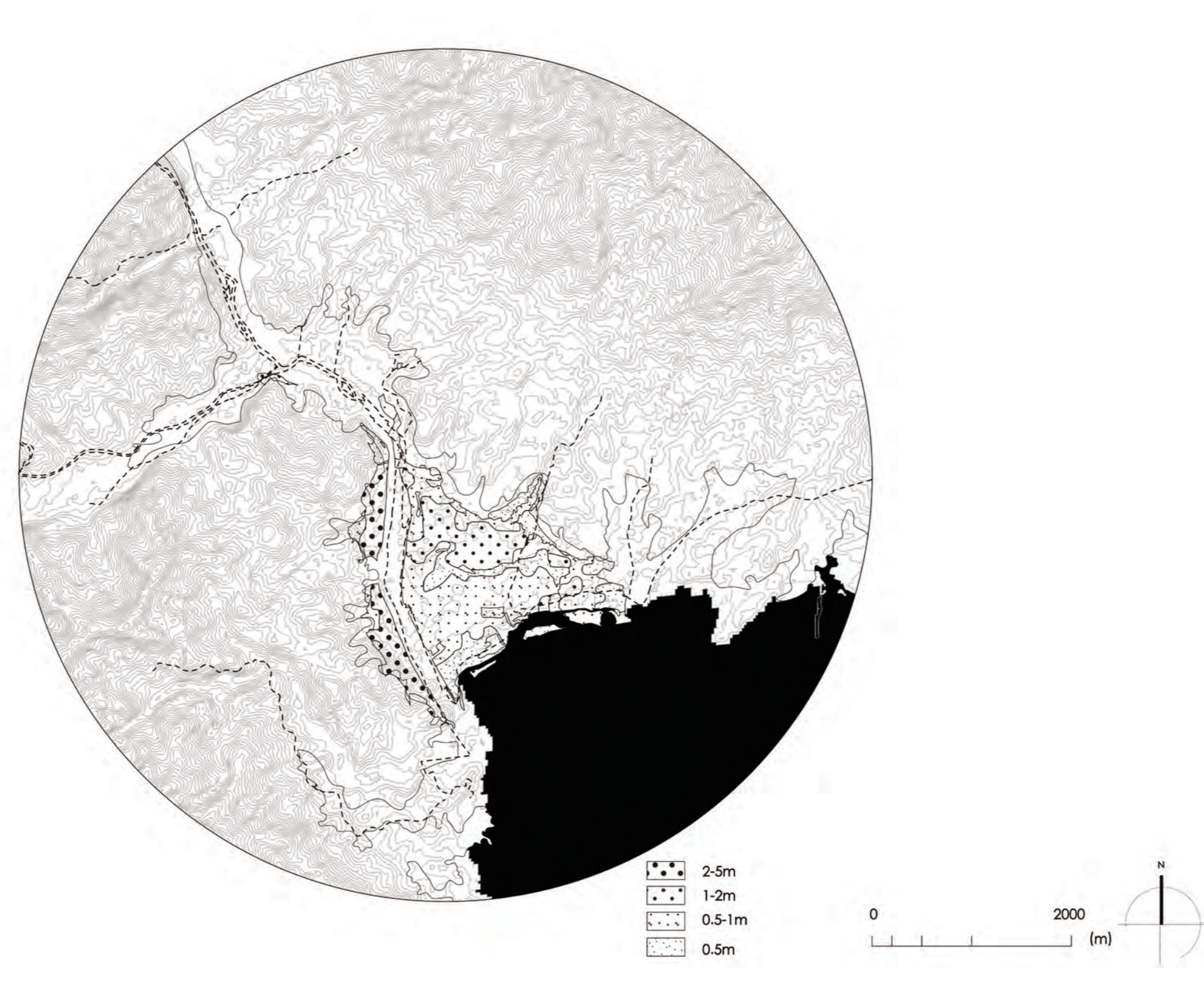
Paddy fields



History tsunami line

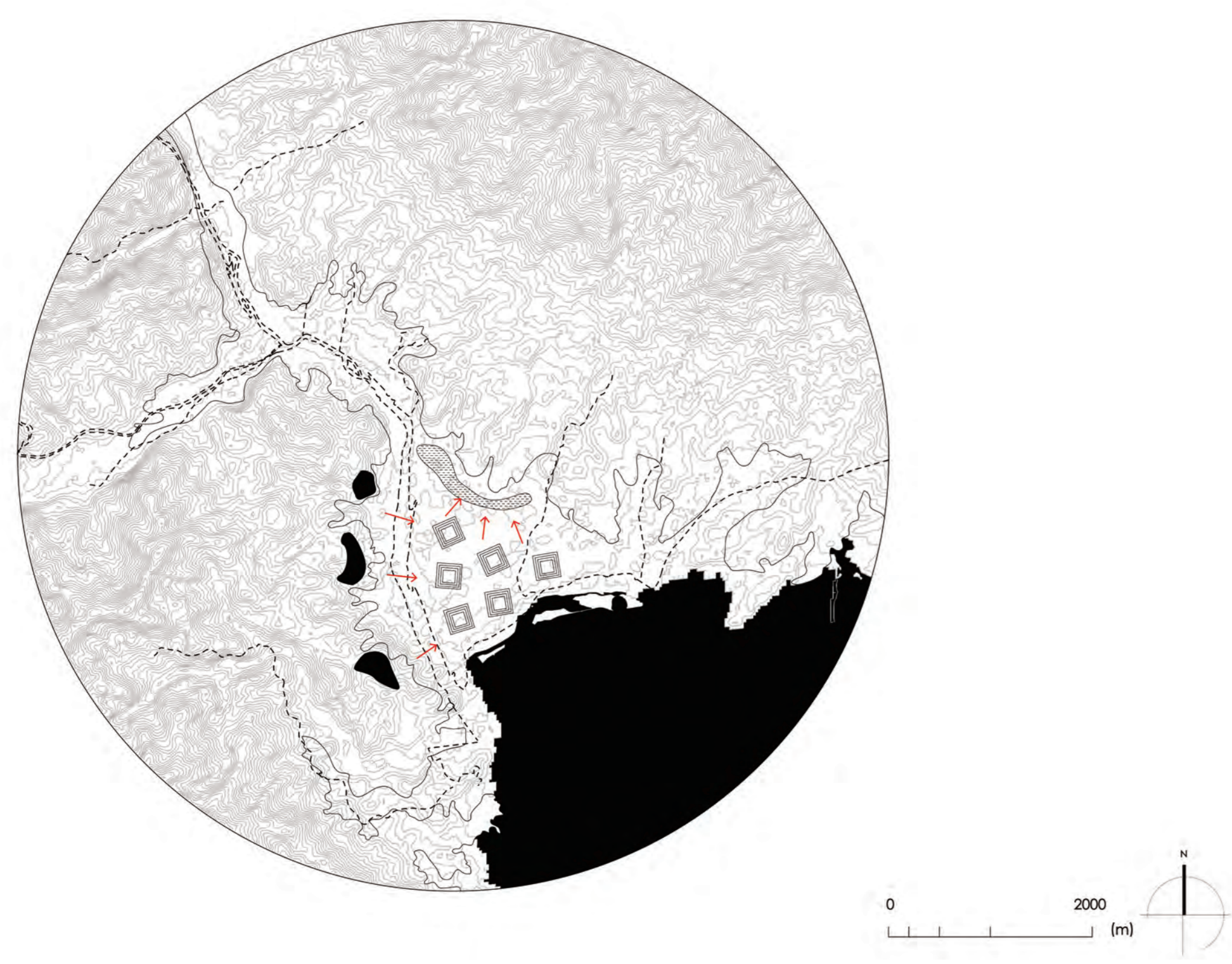


Possible flood water level

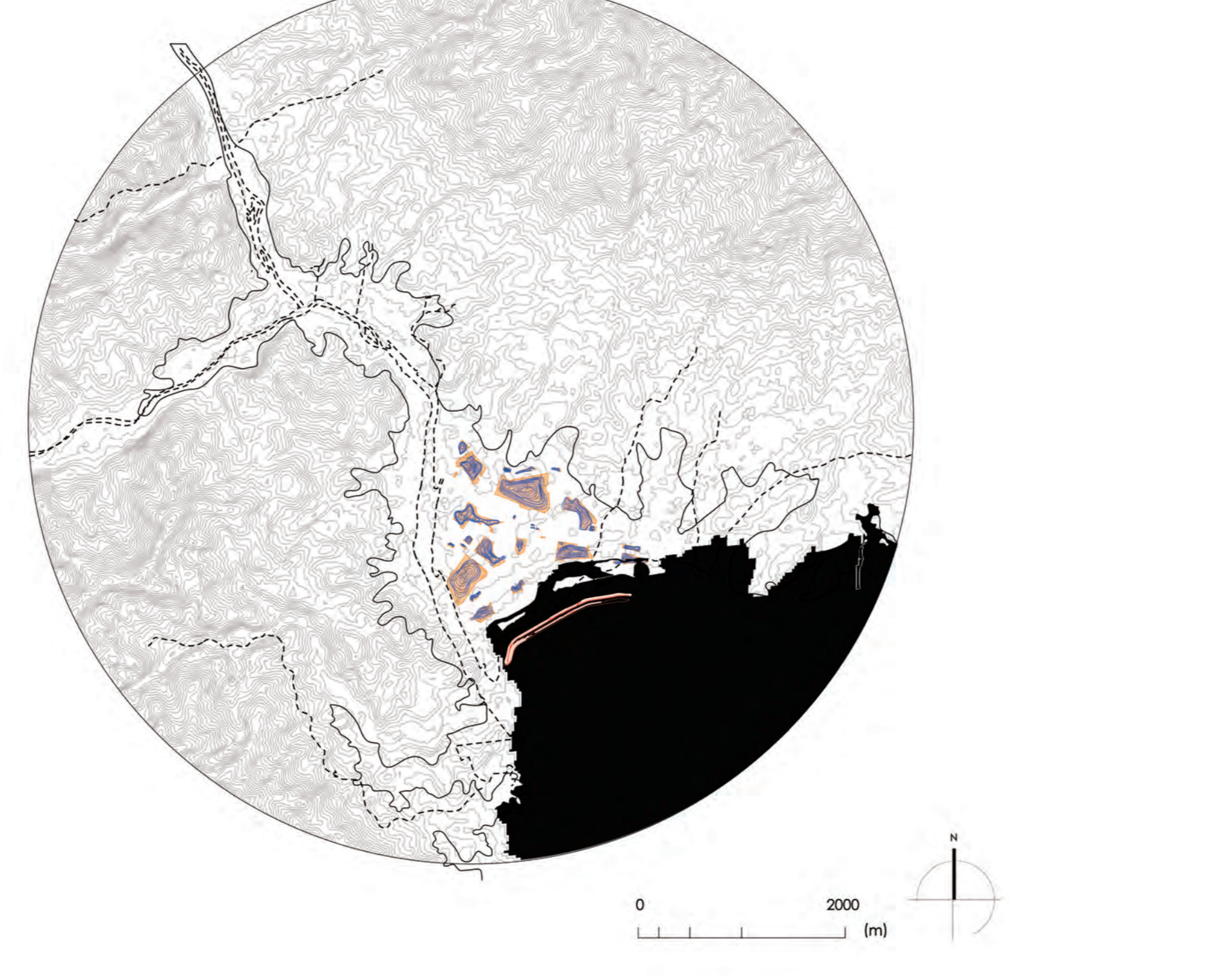


By studying the historical layer of the area, the memory of the area, we understand the memory of the landscape. The main idea is going to design a landscape which accept water, and could be changed by water.

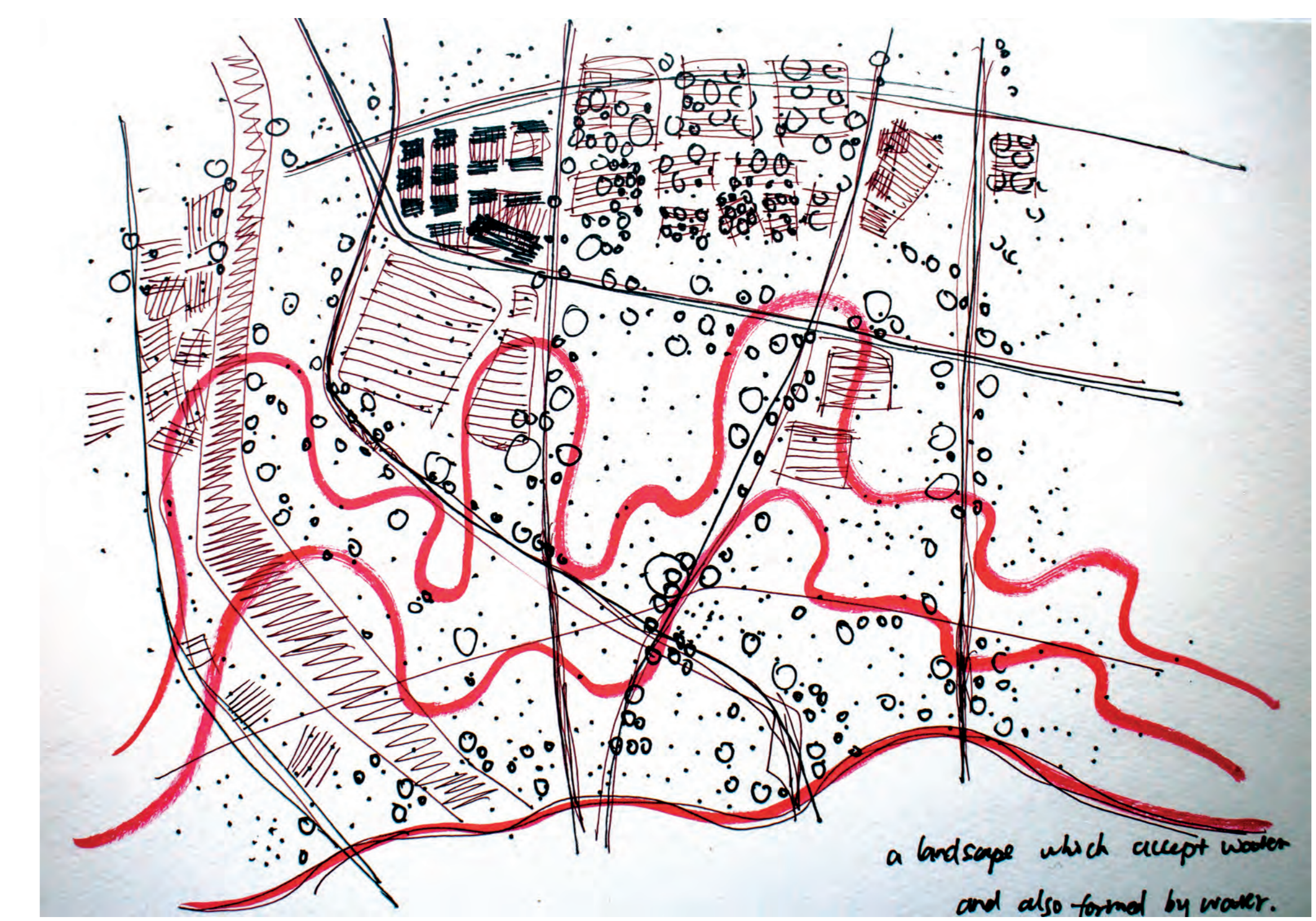
Ongoing process



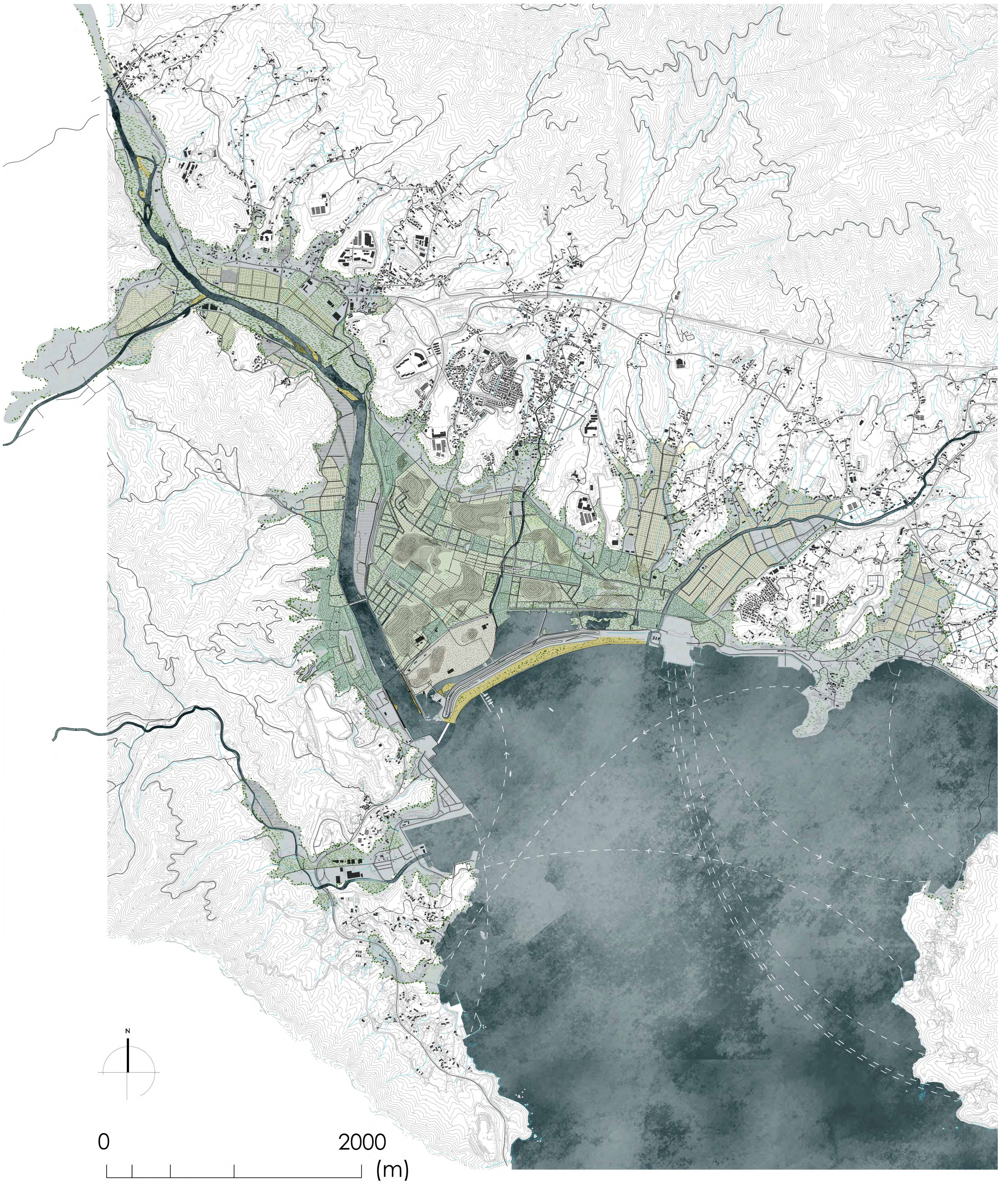
Transformation



Concept



Plan

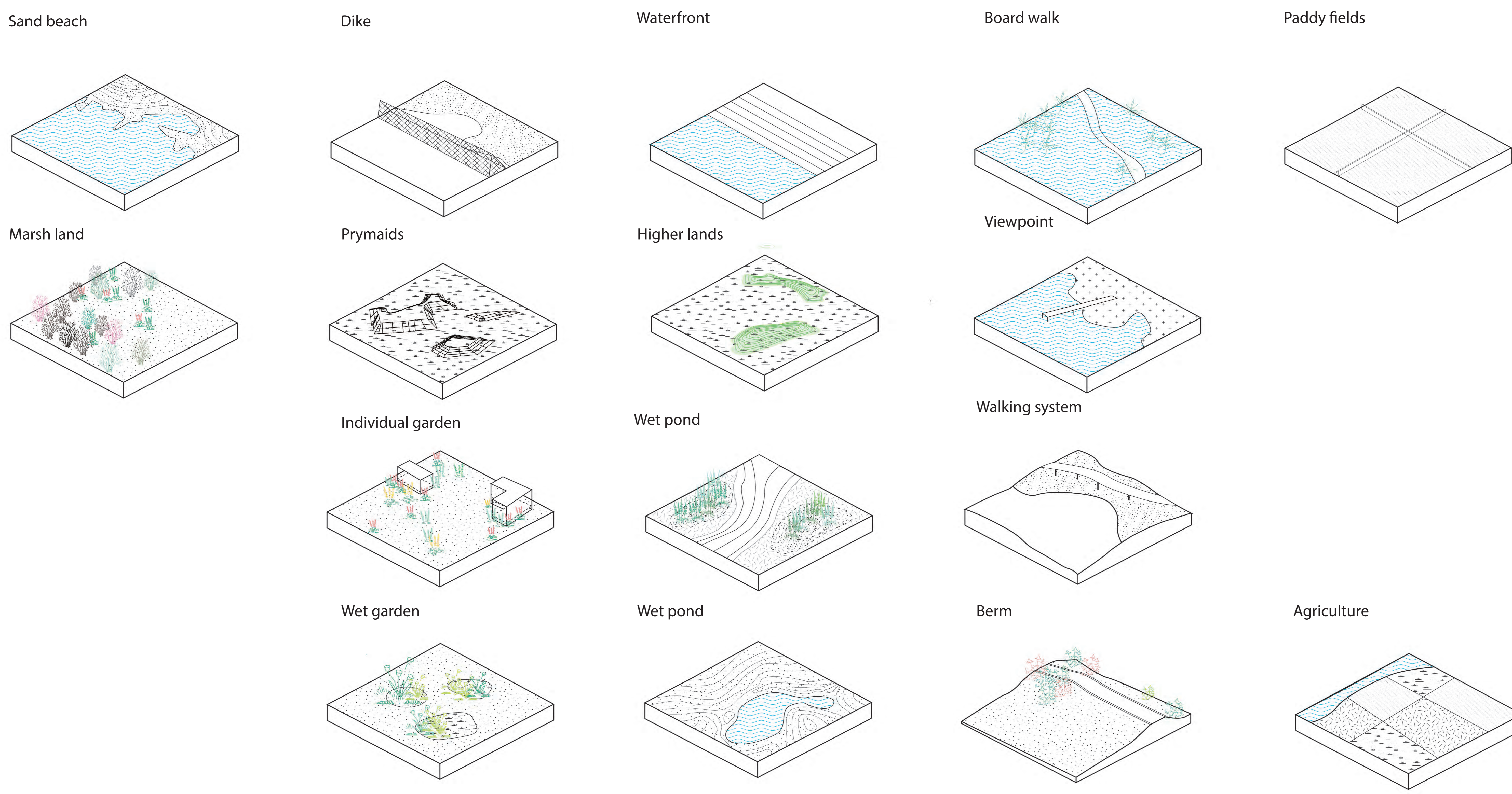


Detailed plan



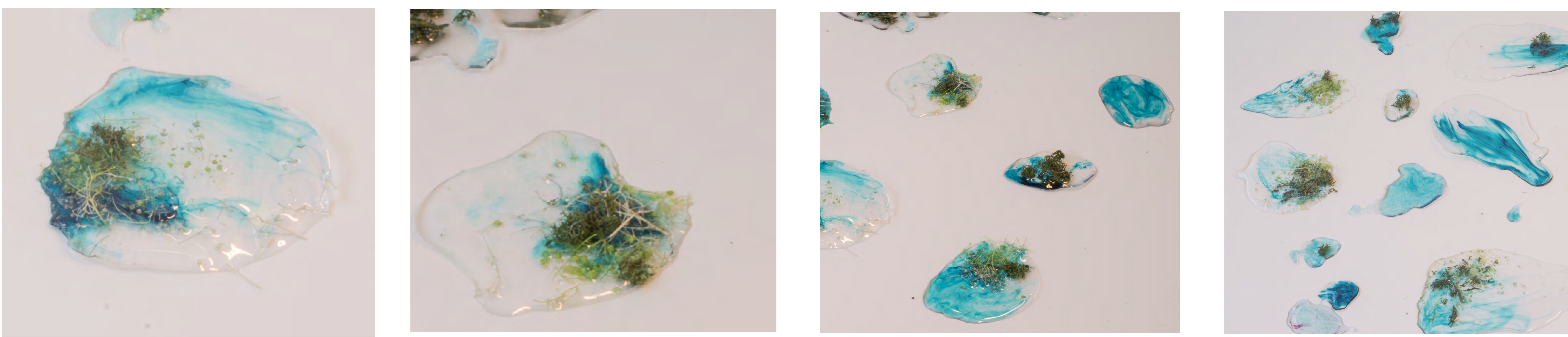
Different types of deserted lands will be transformed into different memory gardens.

Design elements



Model development

Water dynamics



Memory gardens



Transformation of memory



Planting

