

FRÅ JORD ER DU  
KOMEN,  
TIL JORD SKAL  
DU BLI

How to grieve?

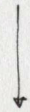
1 2 birchus mortuary → 6 room for private space for the closest



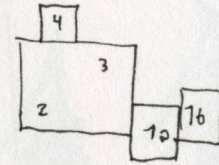
2 Seremoni / Ceremony



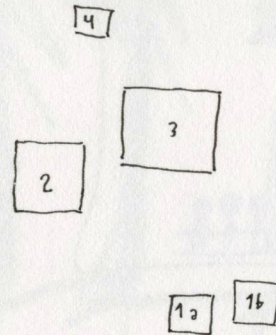
3 Inn / Oven



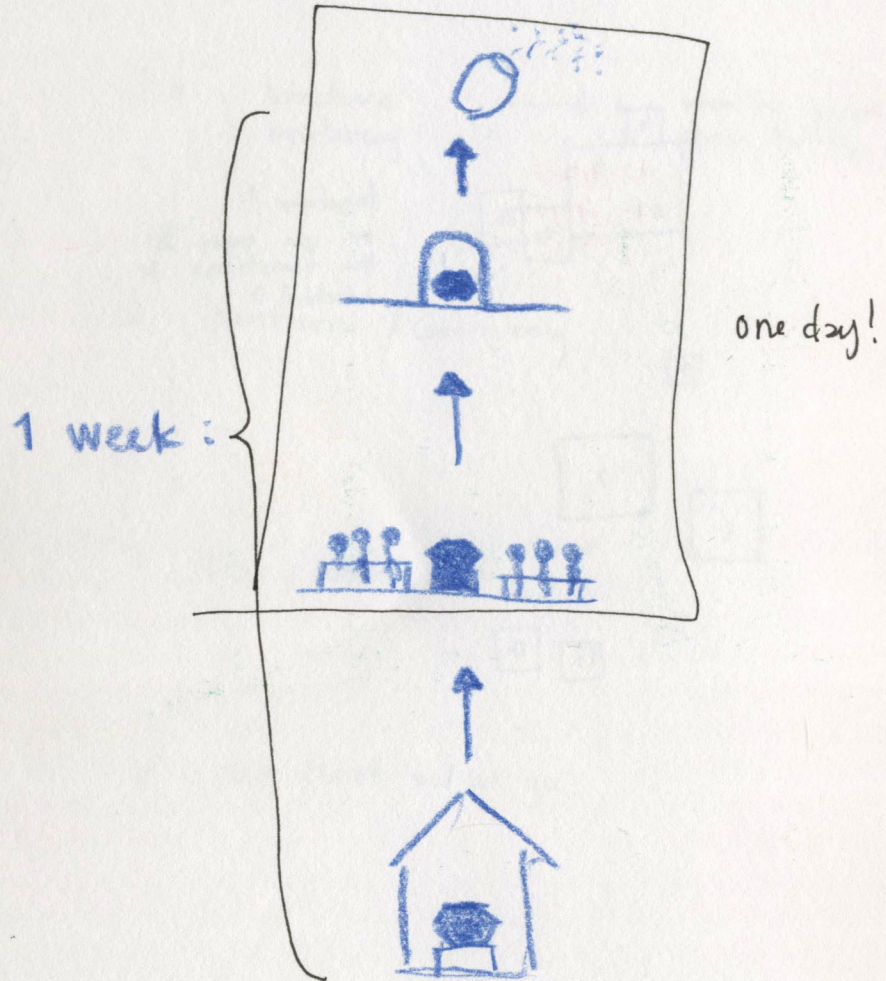
4 Vente / Wait, and let go



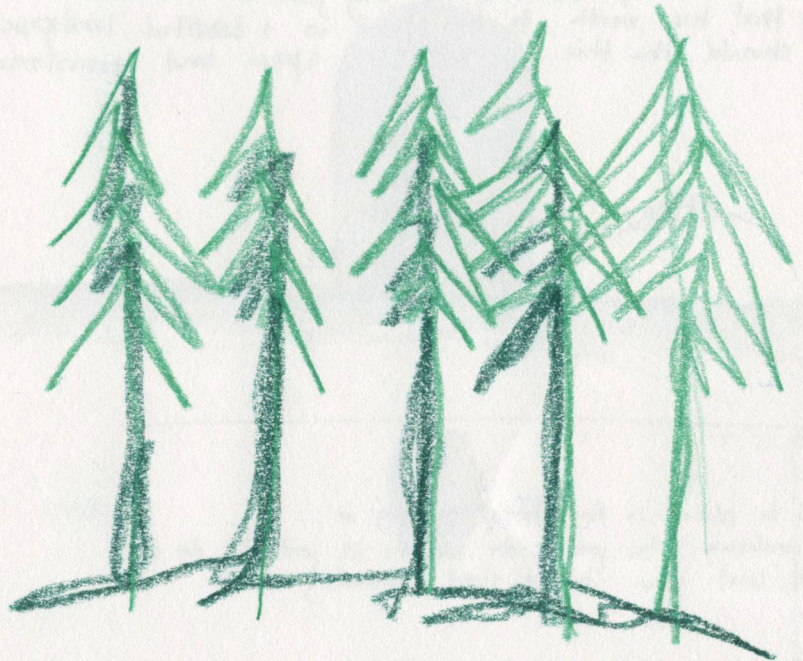
together?  
or can some of  
the functions be  
detached?



A linear action?



A sort of protection

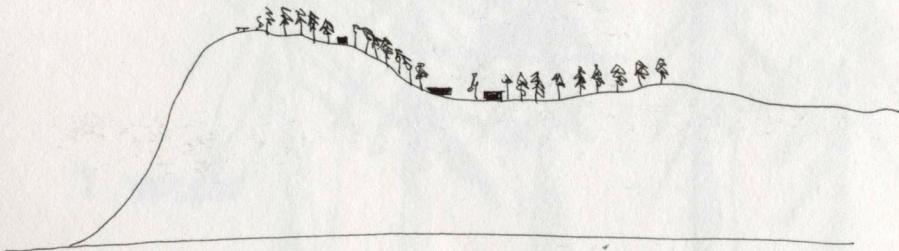


Nature is protection.  
Why?

Crematorium to be at a "remote" place.

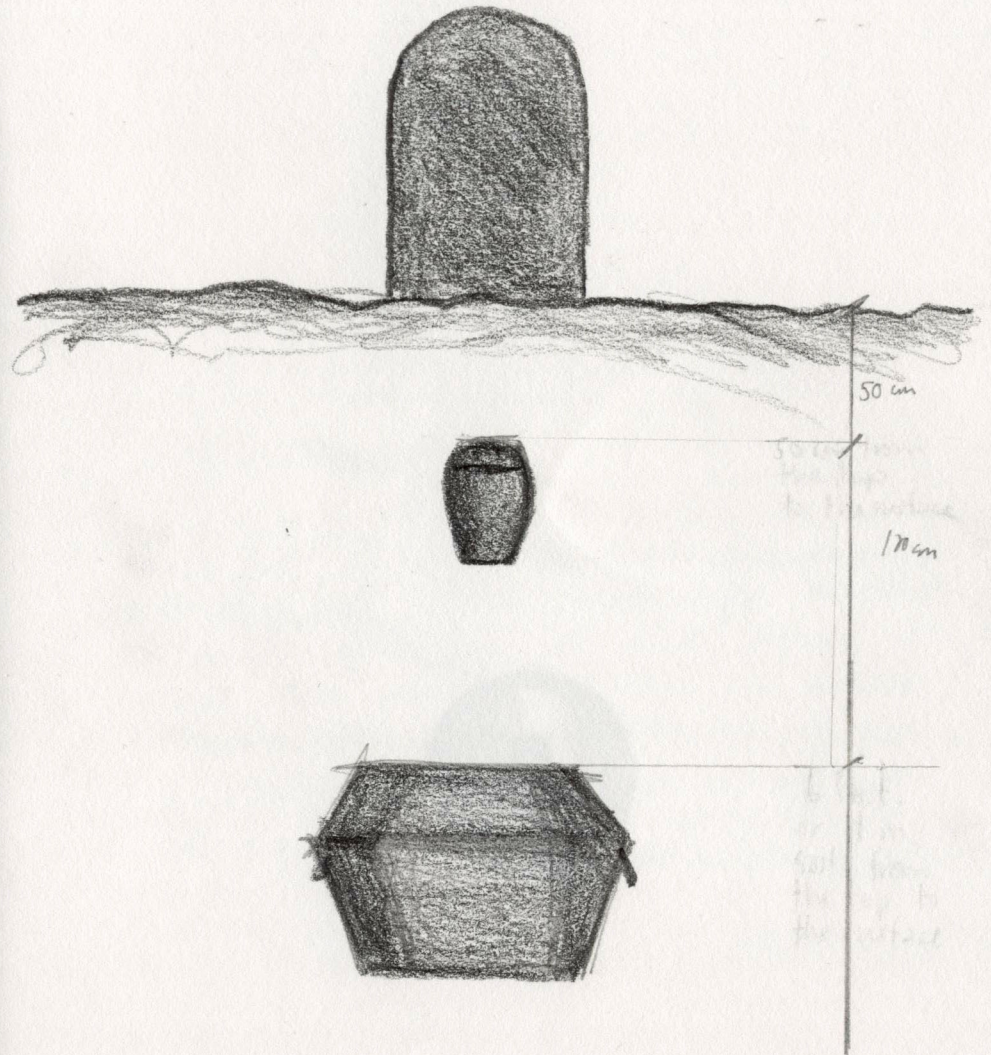
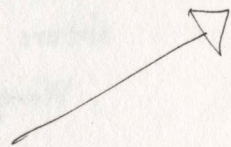
In the wild forest.

If there is any building or any part of a human life that has worth to be placed in a beautiful landscape, it should be this. a ceremonial space and crematorium.

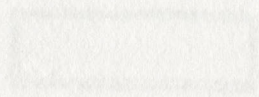
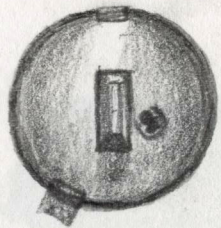


To be placed in the forest, a way of translating "fri jord er du komu til jord skal du bli"  
At least when talking about spreading ashes.

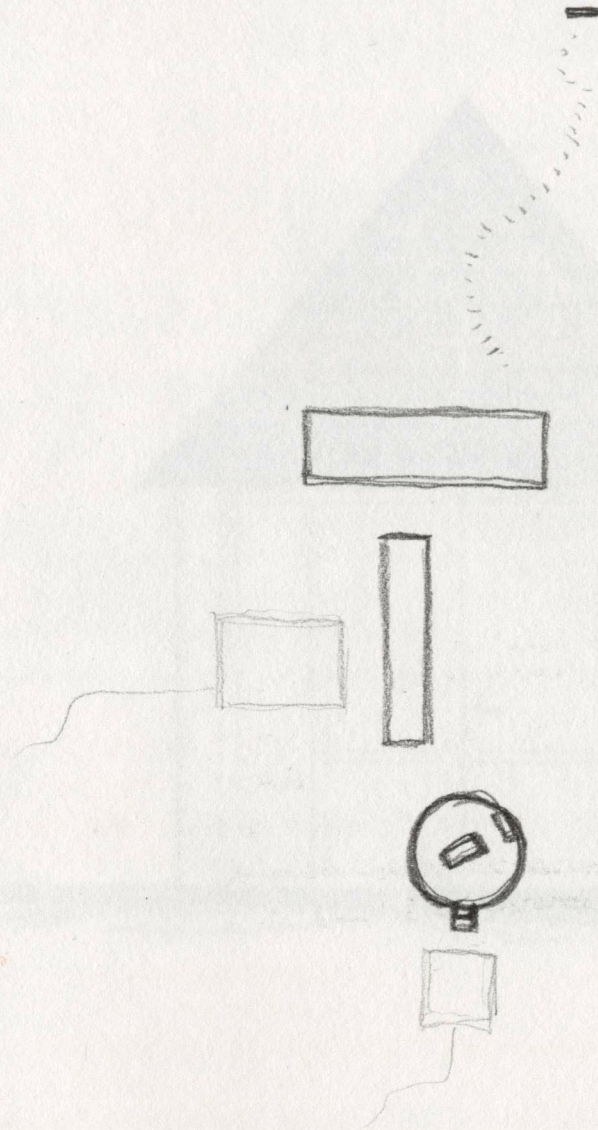
One have to wait 20 years  
from burying a "kisti"  
before one can bury  
the next. So, for if burying  
the ash you don't need to  
reserve) make reservations.  
The ash will be placed much  
further to the surface!



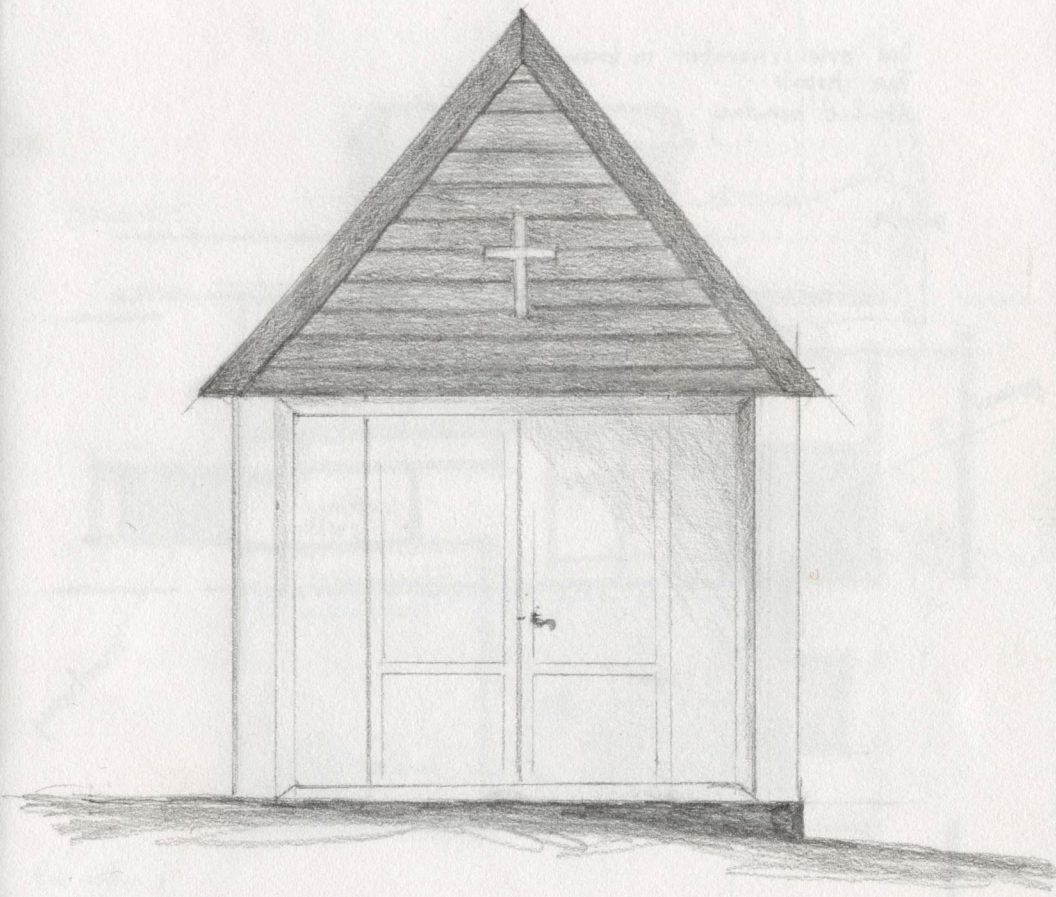
Faint, illegible text at the top of the left page, possibly bleed-through from the reverse side.



Biermann/Le Mortuary is perhaps the most  
introvert action. Should that be the space that  
is mostly about the one-to-one relation?  
Circular, the most perfect form, could that  
act on the action? Or any other shape?  
How can the ceremonial space connect to it?  
Should it be connected? And then the  
Crematorium, the one, to that?

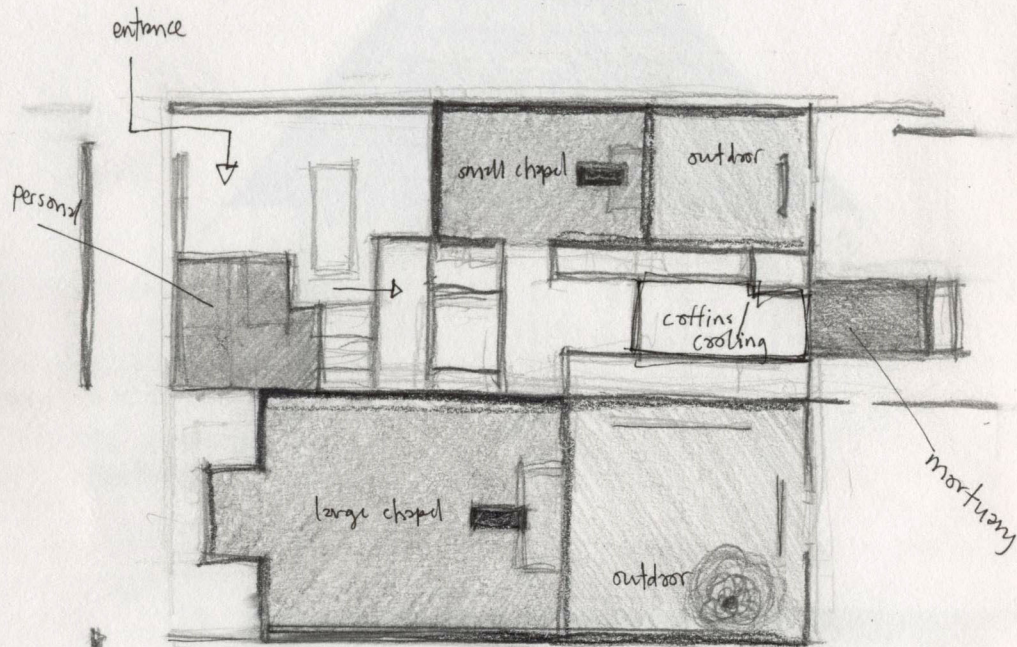


The starting point  
Mortuary in Lister

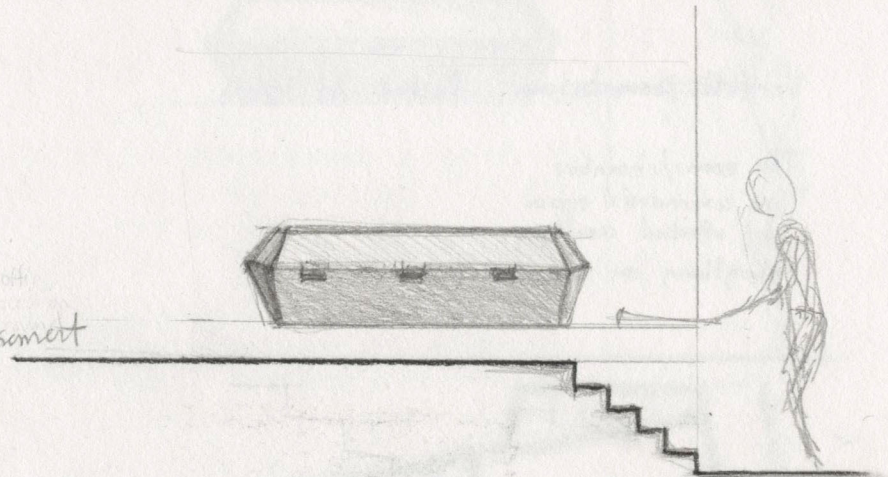


Hosburn Kramatorium, John Engh. 1962

One oven/chamber in basement  
Two chapels  
Attached cemetery



Basement



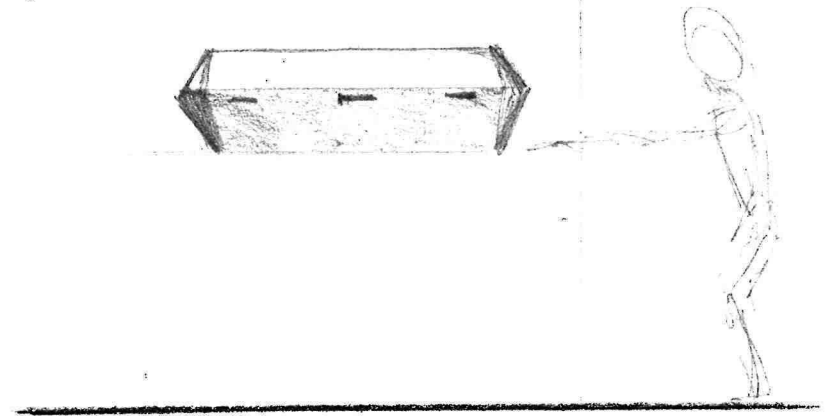
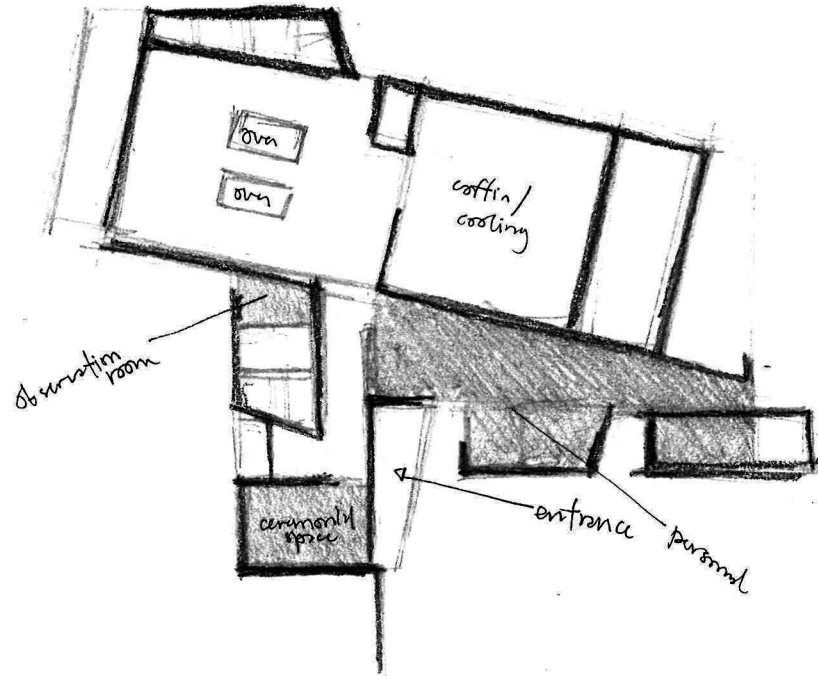
ergonomical correct = steps

the coffin is placed on the ground, after the practice in the 60's



Vestfold Krematorium, Puschak AS, 2010

Two ovens/chambers  
One ceremonial space  
Not attached cemetery  
Everything on one floor



the coffin is lifted  
up before going  
into the oven  
only possibility  
for flat floor  
without stairs?

What rooms can I offer?  
 Spaces for different times of mourning?

- Spaces for mourning

The vulnerable

On the opposite, the machinery, which is also someone's working space.

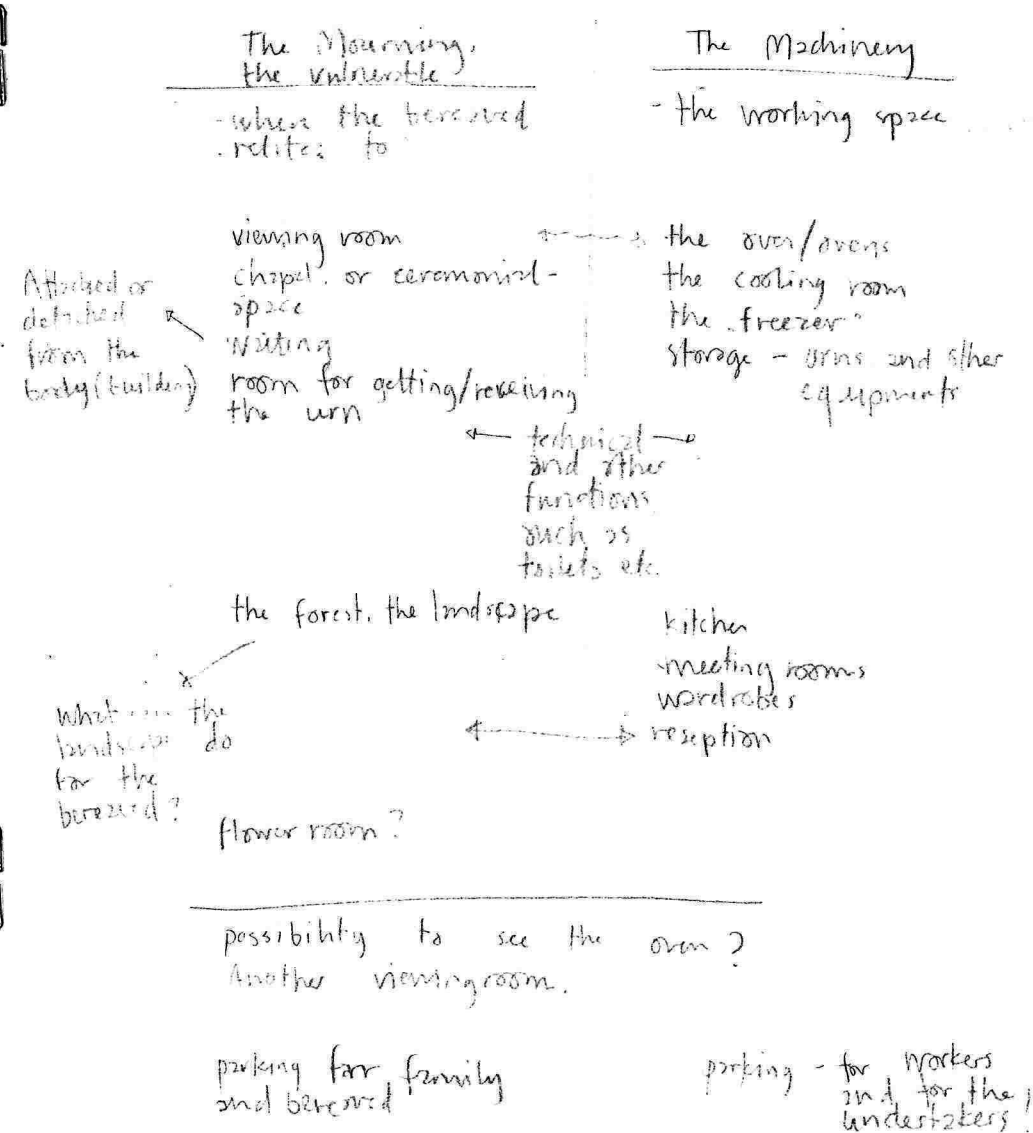
How does this vulnerable act with the machinery?  
 Where do they meet, what is that meeting?

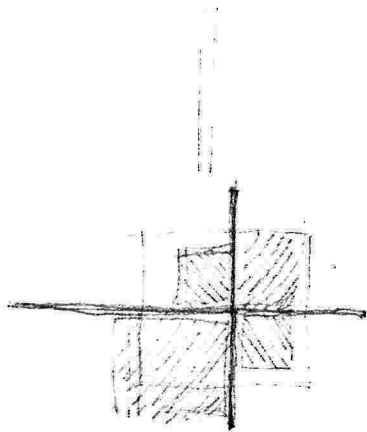
When are they separate, and when is it necessary to separate those two?  
 For the workers? For the bereaved?

This in-between is interesting!  
 One building body? Two? Many? Where goes this line, this separation?

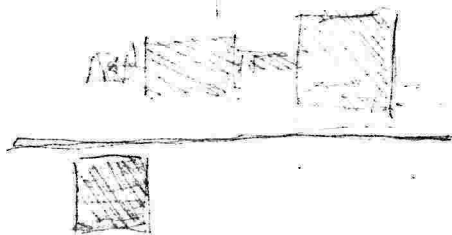
How DO WE GRIEVE? or how do we want to grieve?

I need:





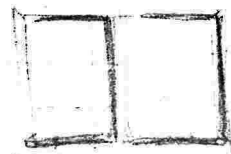
one building but  
still detached in  
a way. Not  
connected, but  
still some  
building body



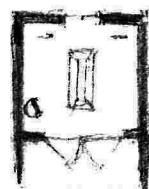
two roads?  
two ways to  
come?  
Three - just one  
for workers & in double

what a "special" or what character about the  
"living room" in center is important for me  
to highlight?

There is only one window, to North-East. Not  
a window that is screaming "This is your only  
view, look out!" but it is just there. A pleasant  
and not light source. Not "patent".



There is one door, one opening, and that is the  
door you enter, which gives a feeling of being  
a bit a small home for the deceased in those  
days where he/she lives. Here the sun is  
entering only in the morning.



The viewing room: small, coffin in centre, perhaps  
plca for only 4-5 visitors?  
Could be 8. But if it's only  
one one should not feel alone  
in a big space.  
An intimate room, with only  
one opening/entering, and one  
light source, natural, from East,  
to highlight a new day.  
No clocks, only window.  
A bench or just a few chairs?  
The coffin is placed on a  
big rock that is carried out from  
the other side of the fjord,  
a white granite block. Candles

The ceremonial space: Should not be too big. Benches.  
Never empty, but place for many  
or few. Alter? what could replace  
the Alter?

How to grieve/mourn?

And how can we build to make space for this?

The relations

The nature

"Søkte skogens ro"

Sorggrupper - groups that are talking about sorrow  
and their loss.

- The nature itself, hiking (the method I used)
- Planting/growing flowers or vegetables, documented  
to at least have a positive effect on depression.  
Possible to prevent the sorrow/depression?  
Is it better to grieve properly that week before  
burial, will that prevent depression? I wonder.
- To be with the deceased, with your loved one,  
closeness in the time before funeral
- Be together with family
- Be totally alone
- Have so many tasks that one don't think  
about it detached to the situation but it seems  
to happen to a lot of people.
- To see your loved one, the deceased

Dei fem sorgstadiene.

Benektelse  
Sinne  
Forhælling  
Depresjon  
Aksept

The five stages of Grief/Loss

Denial and isolation  
Anger  
Bargaining  
Depression  
Acceptance

Kubler-Ross method from 1969

Denial will just postpone the process of mourning and not erase it, as one might believe.

Loneliness

Openness

My nephew <sup>draw</sup> drew a drawing of my father and put it in his coffin, saying "see you in heaven"

Sorgestegen

The relation between the deceased and the bereaved. Formal (relatives) & informal (friend.)

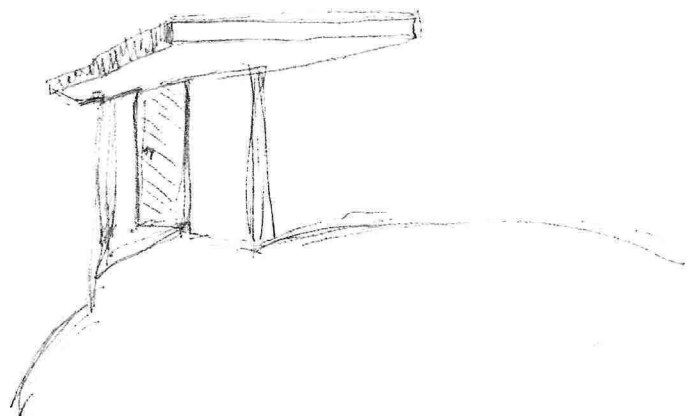
"I den første umiddelbare fase etter dødsfallet er vi i en traumatisk situasjon - i sjokkfasen. I de første timene og dagene er vi preget av fortrengning, spente, hjelpeløsthet og vantro."

trøst.no

"Reaksjonsfasen kan vare i flere måneder og preges av bolger med sterke følelser. Store humorsvinginger og manglende konsentrasjon er vanlig her."

Uyorienteringsfasen

Landsfororing for pårørende innen  
Psykiatri helse: hpp.no



Kan er verdighet?

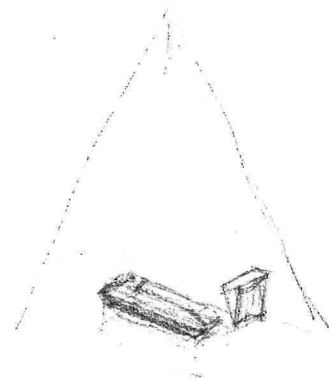
Om Norrköping Krematorium.

"Rim, lugn och ljus seser sig denna byggnad, som nu  
skol vigas till döden, helgedom och till den  
renande Herrens sista barmhärtighetsverk"

Biskop Förz André

Rum för avskjed  
Room for farewell  
departure

Avslutning  
Closure



Room for the deceased

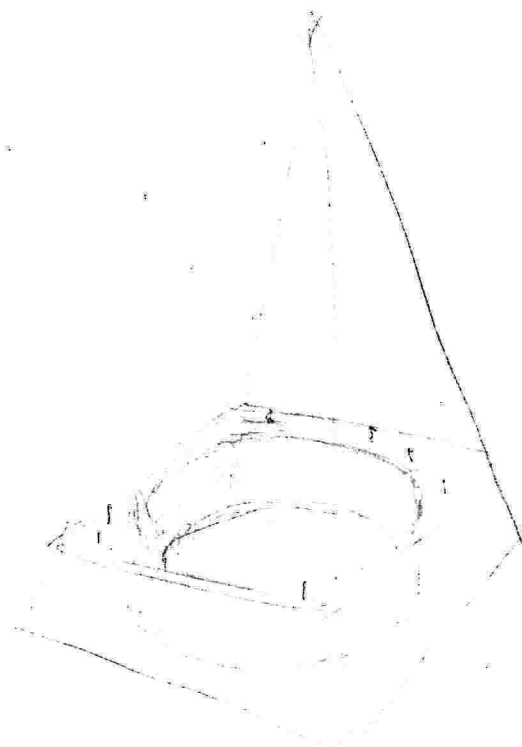


cold

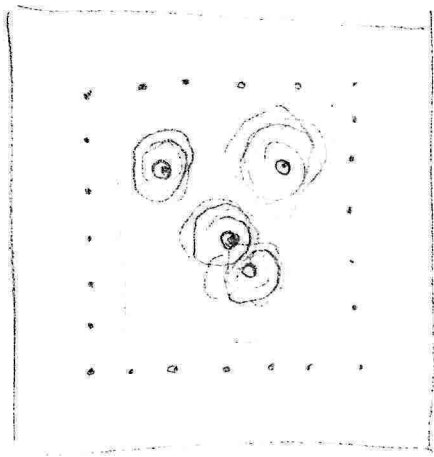
Room for the bereaved



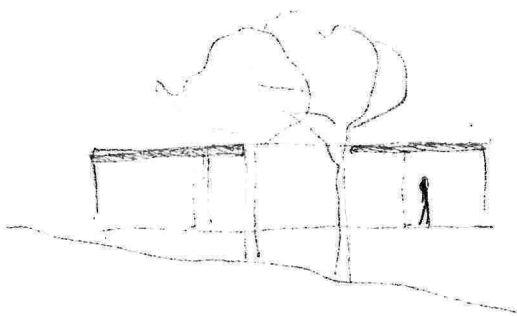
warm  
the heat



Waiting, thinking

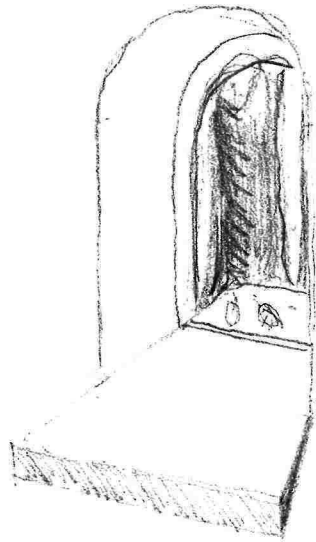


25 Le Thormet

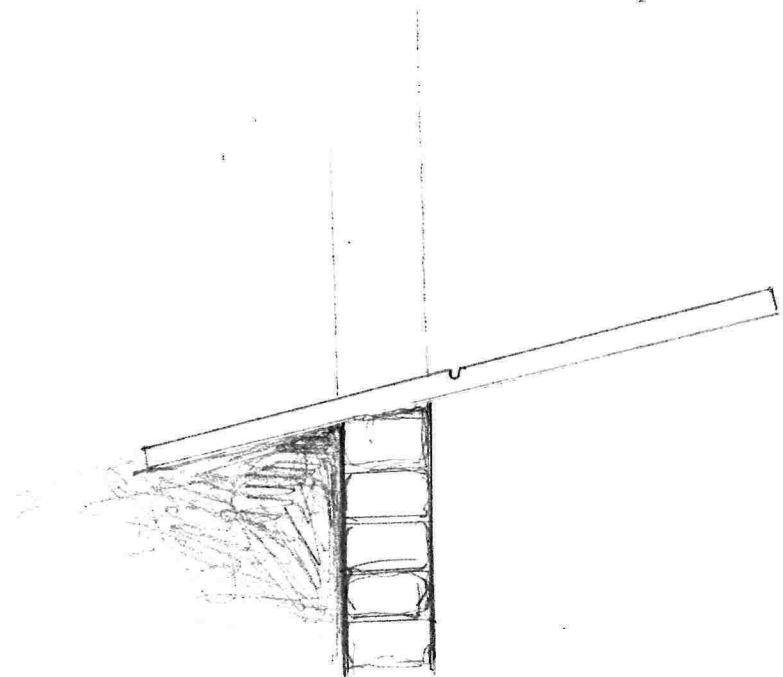


A place for grief  
A bench for reflection





Not climatized in winter? open window, no glass? And put it in in the summer?  
Is it possible one animals etc?



possible section  
through opening

