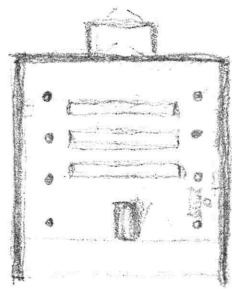


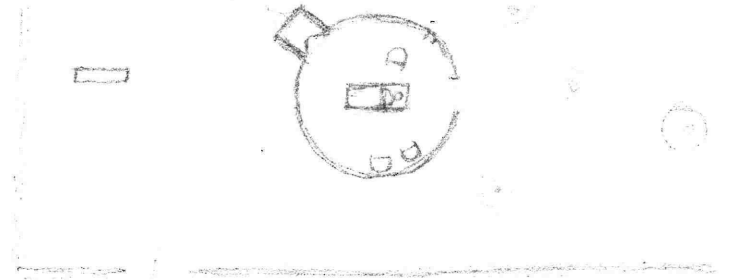
... Du er dyp og utgrunnelig  
og uten retning for bevegelsen.  
Dens rom er trangt og likevel  
grenseløst, og dens  
stemning er demningens  
og skumningens overgang.

Skogens frihet er friheten til å  
forlate stien og gjemme seg  
bort... "

Christian Norberg-Schulz  
i boka "Nattlandene"



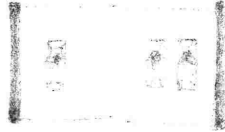
↑  
N



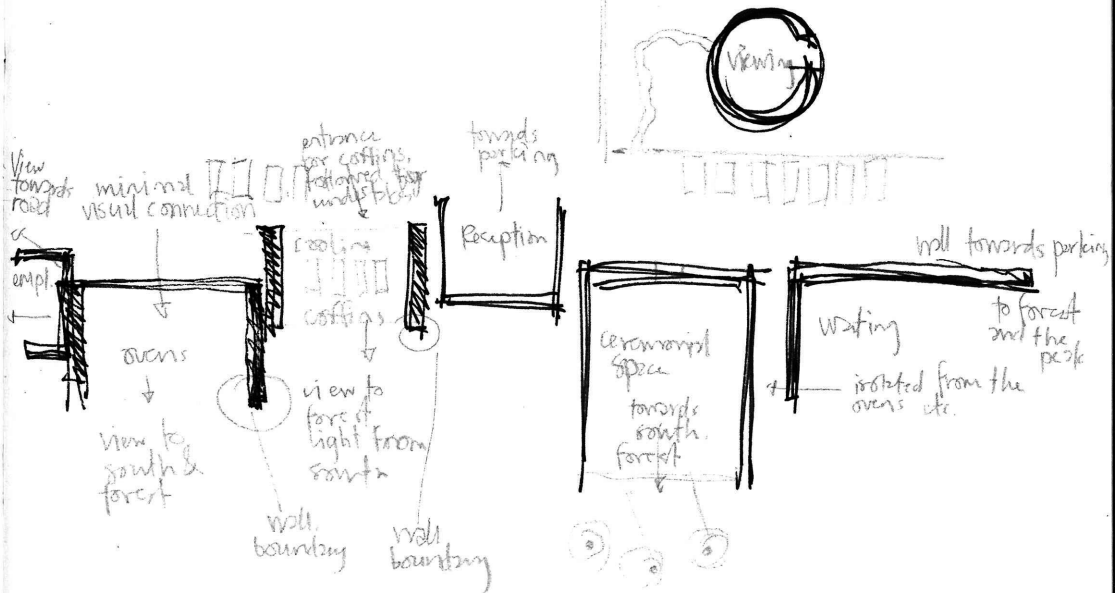
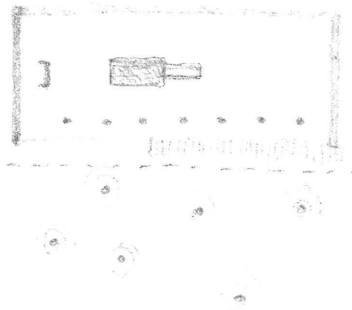
↑  
N



↑  
N



↑  
N



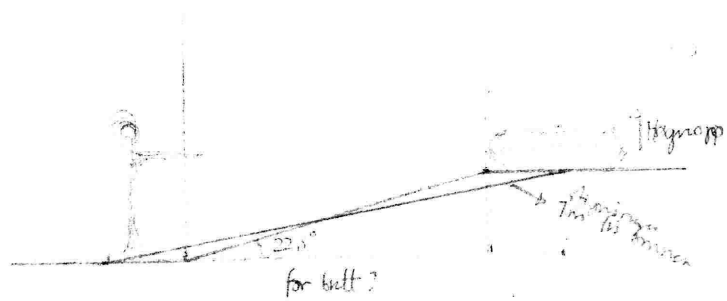
kommt i nord er en nydning!  
 Norberg-Schutz

Norbergs-fjell i Minnejord

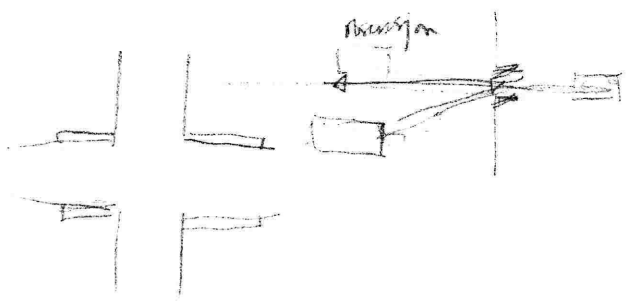
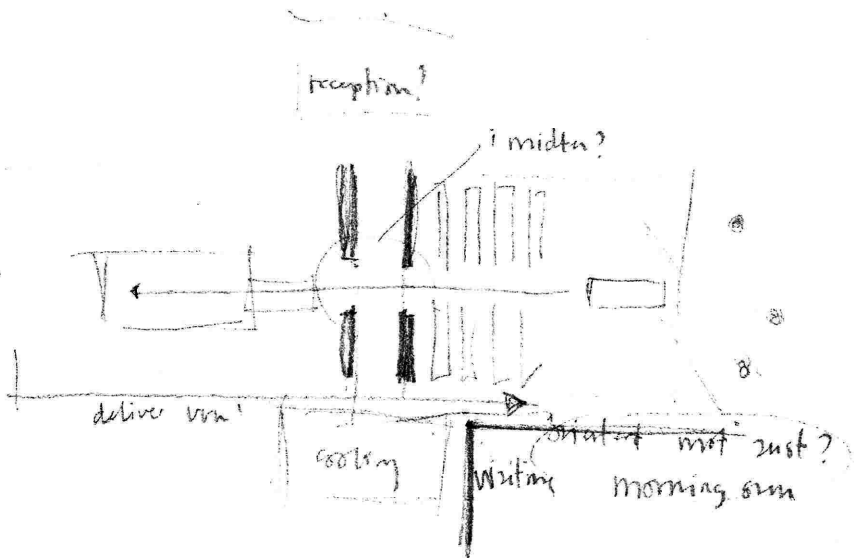
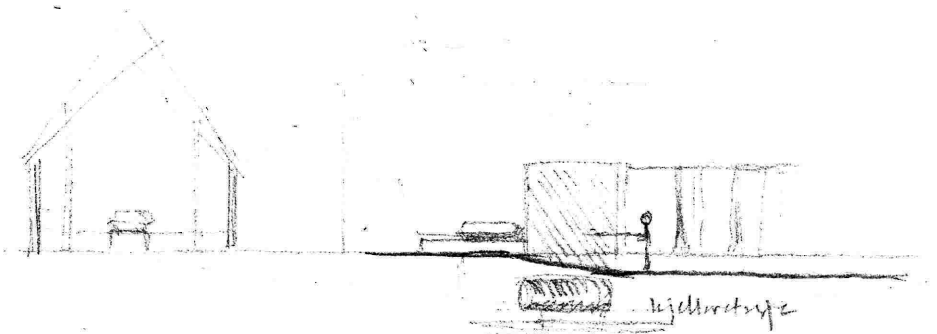
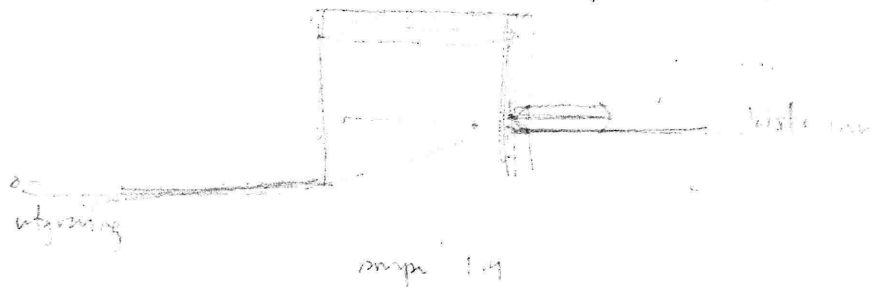
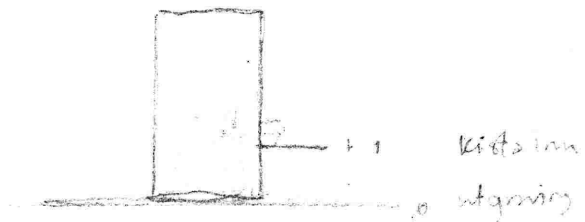
↑  
 North

↑  
 N

1:100



Betre med trapper?  
 Eller er det greit med  
 her?





the middle of the

The rooms  
of both ceremonial  
and private use  
the for most soon -  
the the middle of the  
line may not that the  
are particularly at  
medieval.

important but  
this one is not!

Limbo?   
where is the rest?

entry in room?

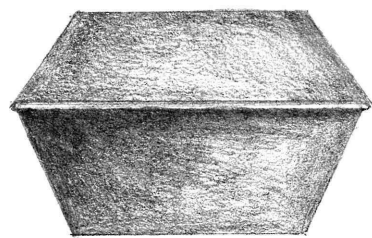
DØD. ?  
DAUD.

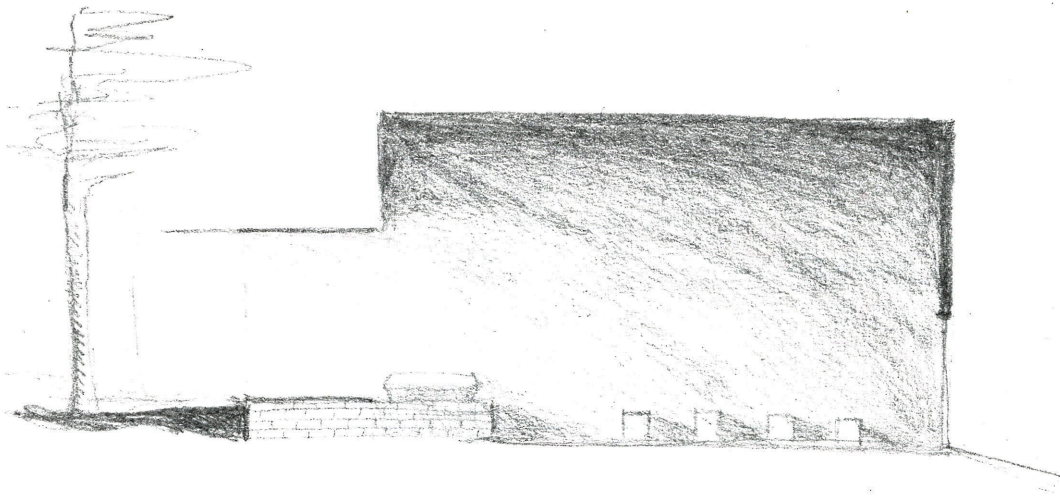
Ein ceremony of an om  
A ceremony and a-over  
signing and see over

Syning og branning?  
Syning og ein omn

Rom for syning og rom for ein omn.  
- Kromstone i Indre Sogn



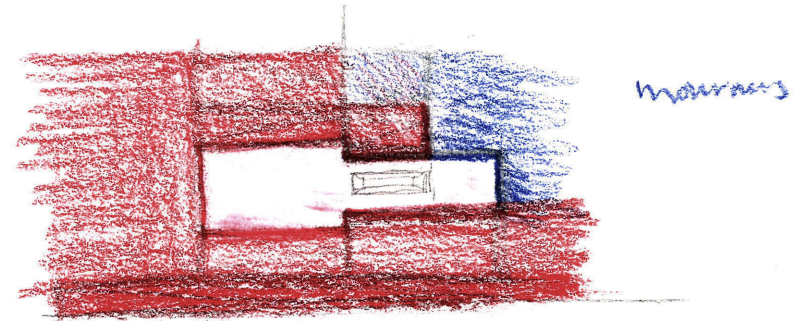




4 - what to exit?

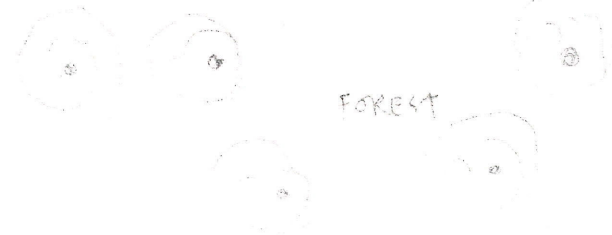
The water is all  
about the ground.  
And when you leave,  
should it be heavier?  
The traps?

Using different  
floors and floor  
heights as  
threshold



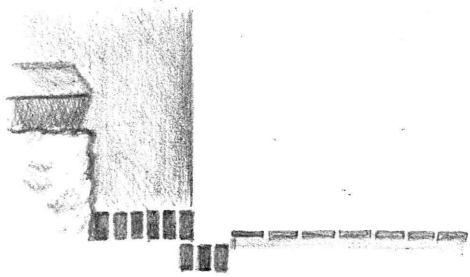
workers

workers



FOREST





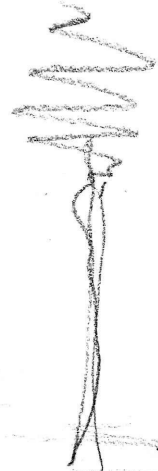
My. egdaymer  
and kate

The body leaves us.  
and not we leave the body

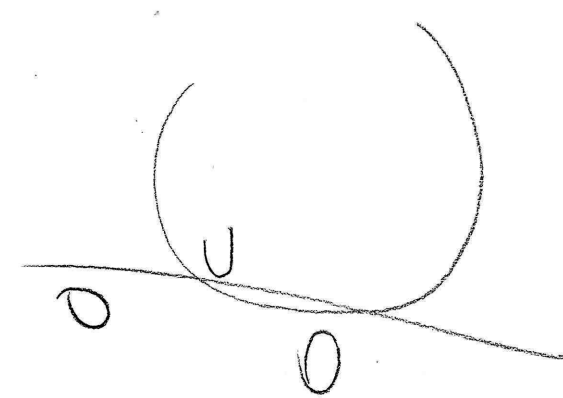
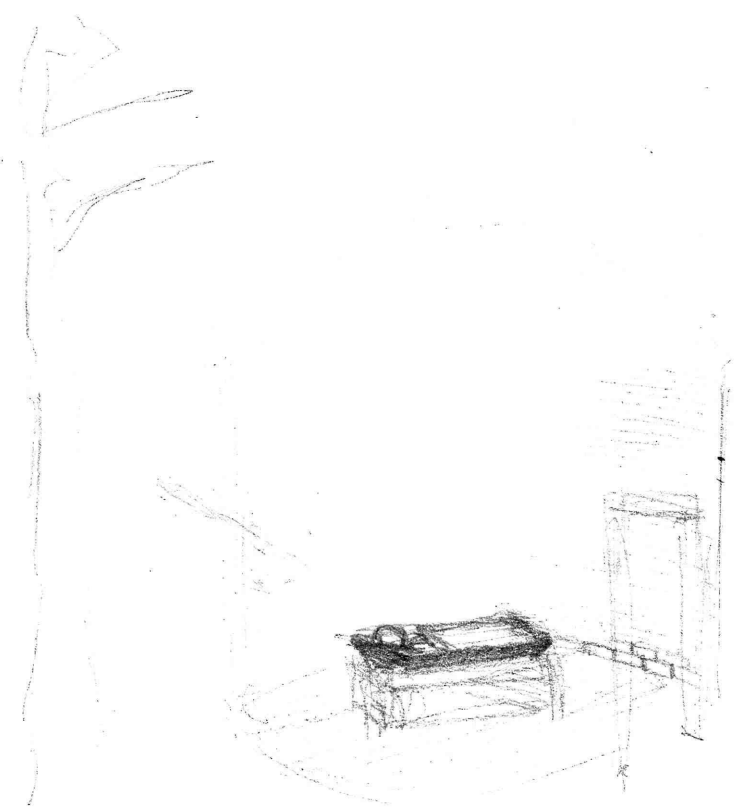




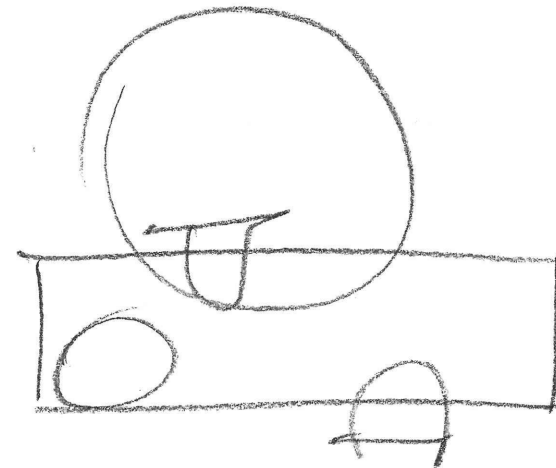
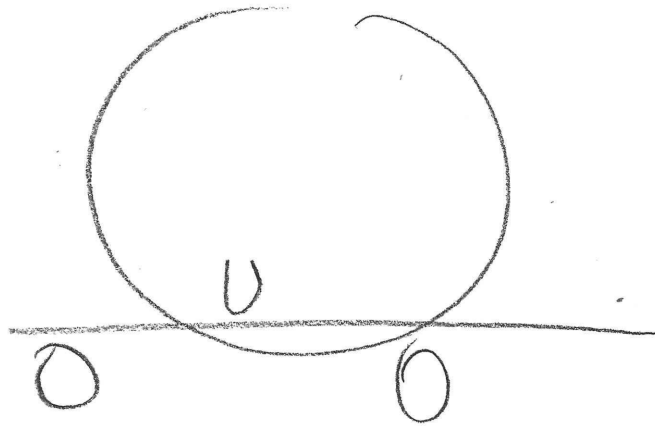
roof

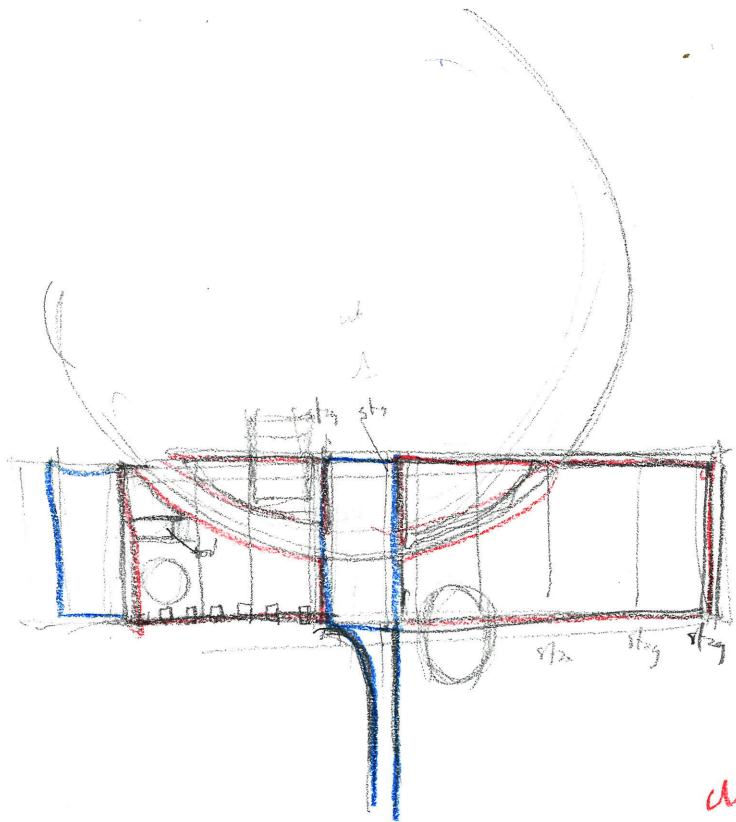


well

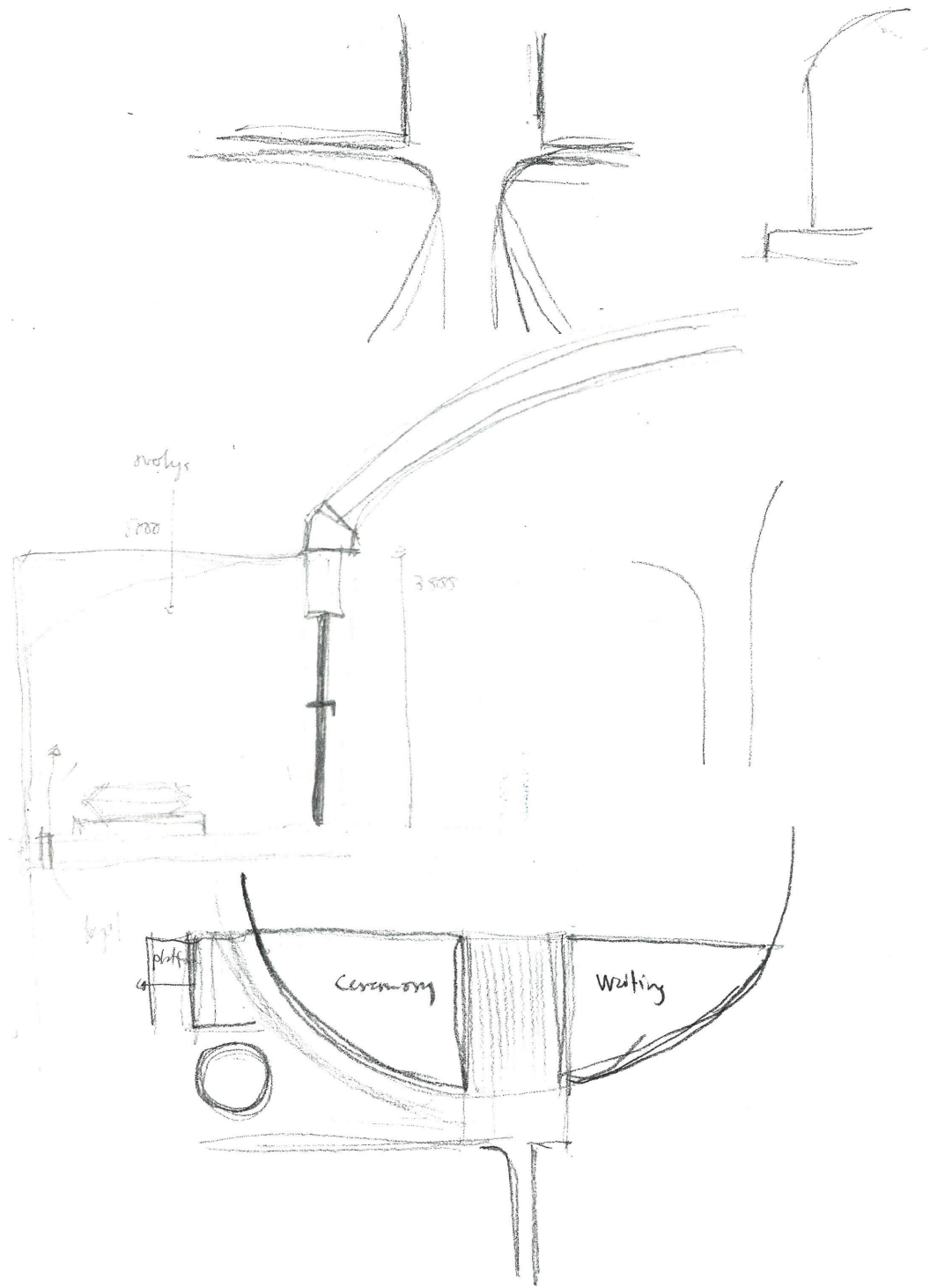


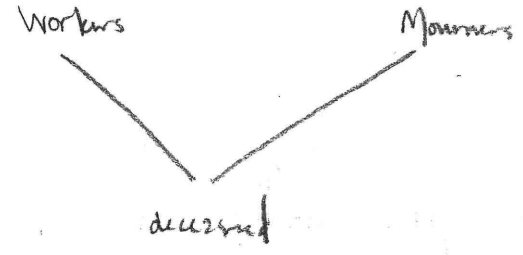
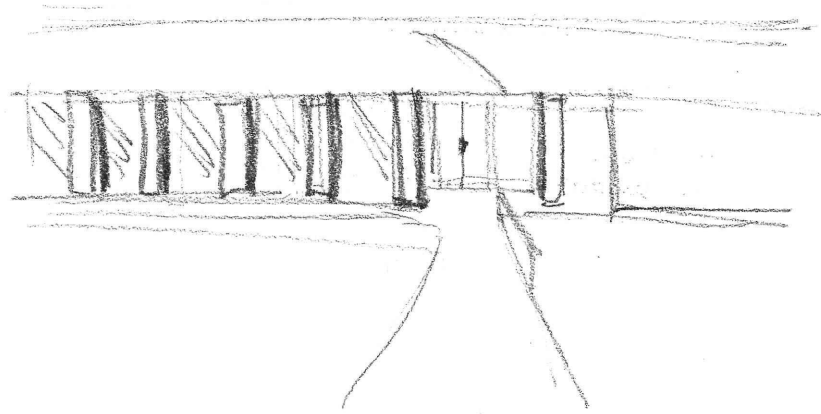
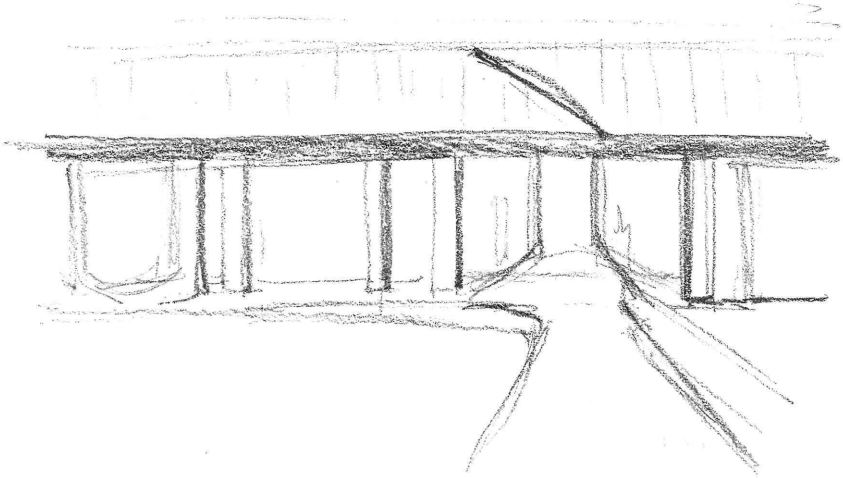
Viewing





dimensions &  
not climbed





Both are there  
to make the  
transition  
between the end  
and the griever and  
best possible.

The workers  
are there  
to support → Mourners  
are there to  
say goodbye  
and to be  
with their  
love one.

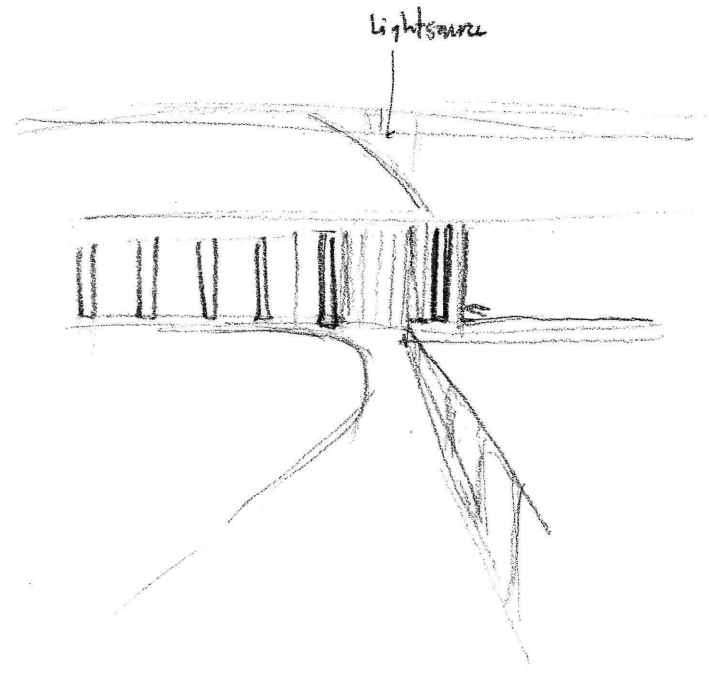
The time of death is the end for the deceased; it is also the beginning of grief.

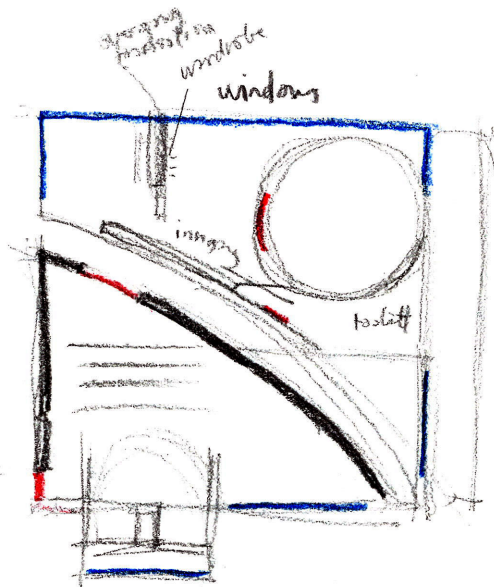
This project investigates this journey of those in sorrow, alongside the workers of the Crematorium.

Narrow valleys, mountain peaks and deep fords. The site I'm proposing has both a close and a distant view towards this characteristic nature in the district of Indre Sogn. The surrounding pine forest creates intimate spaces in an endless landscape, a quality that has been important in my approach.

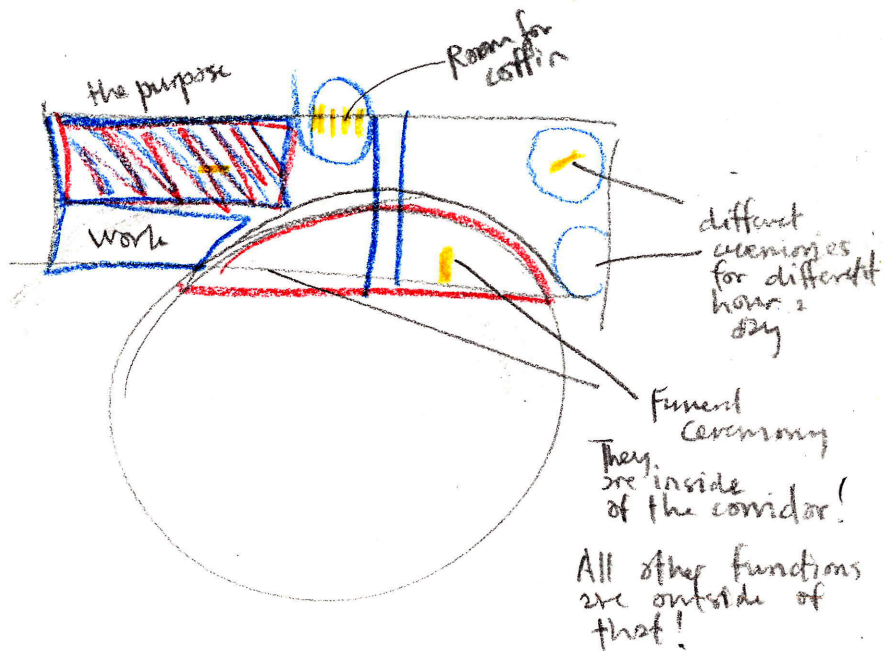
A long red brick path leads you through the forest to the crematorium, consisting of a machinery and the ceremonies. A vault creates a shelter over the mourners and the workers. Both there to support the deceased.

The aim is to create an architectural framework for the events after life.

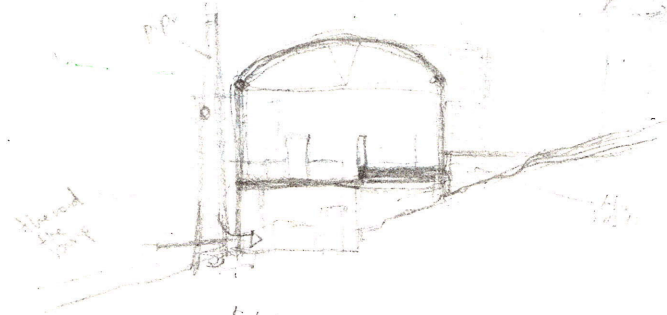




How  
the coffin  
is  
used?

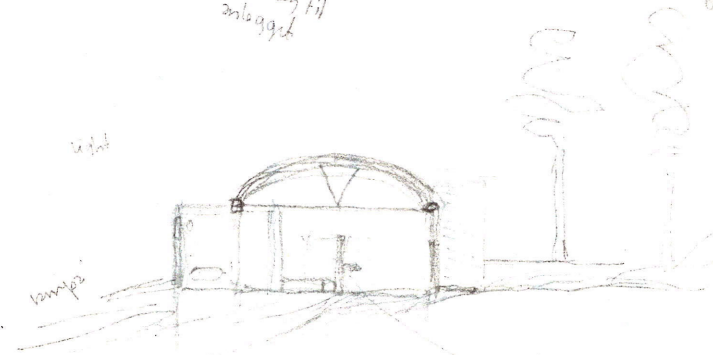


Sections through the  
Building



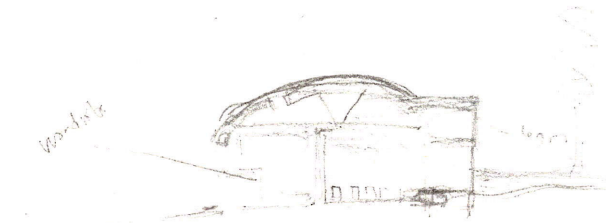
order kept  
pipes are till  
engaged

the office  
in the office  
ceremony room (the room)  
the room the one  
front and the  
back wall



open or  
closed  
pipes of  
valves  
ventilator

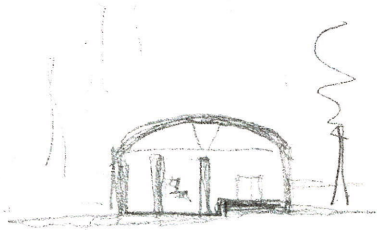
in the back ground



entrance & waiting

in the background  
more waiting room  
the walls





opening 2 ways -  
 defining  
 with path out!



open arcs.  
 tension rods  
 connecting.  
 Outer walls supports.



The walls for  
 the ceremonies  
 are load bearing for  
 the vault  
 stabilizing

