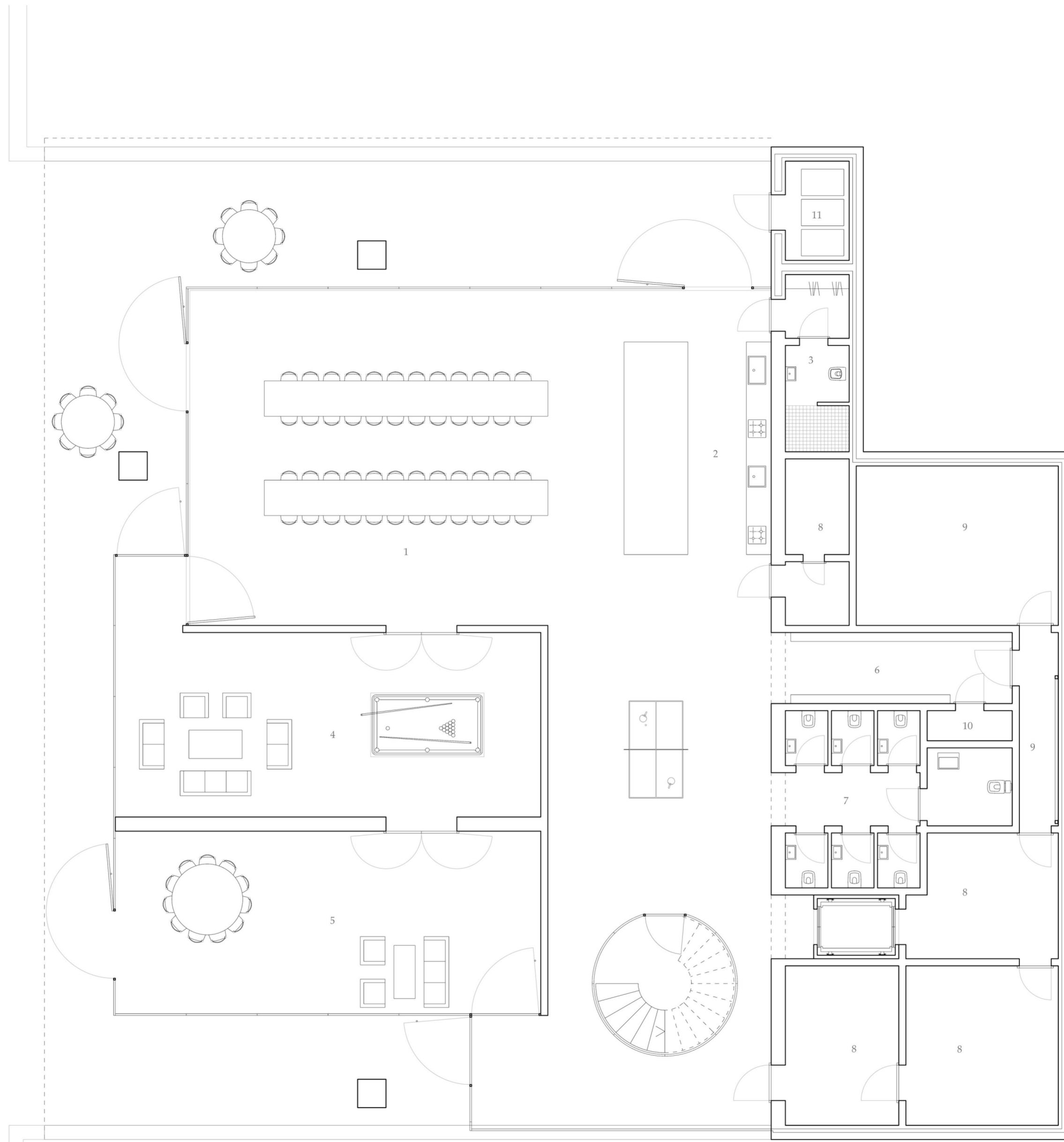
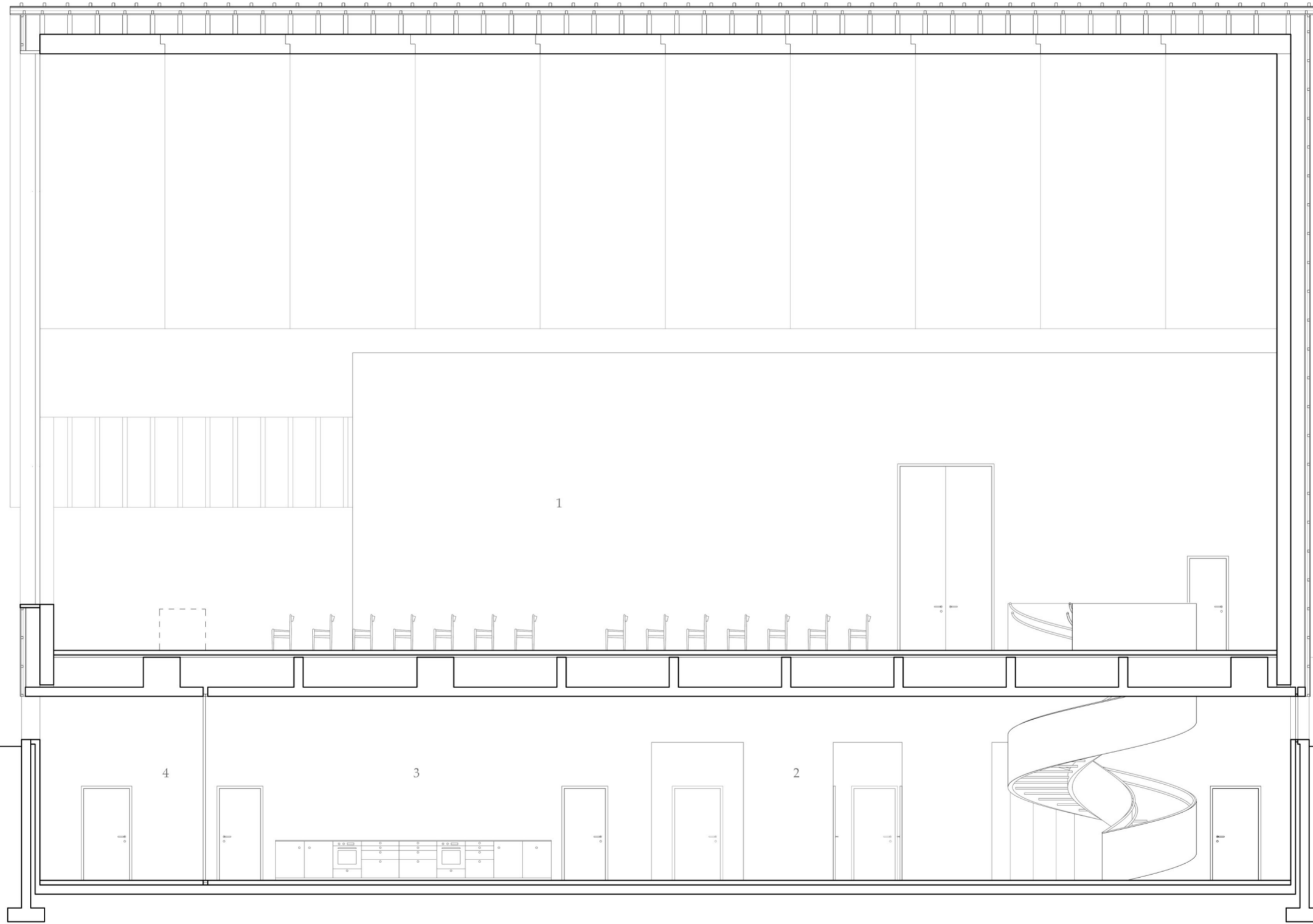


1 Entrance / Baptismal chapel	41 m <sup>2</sup>
2 Wardrobe	18 m <sup>2</sup>
3 Church space	500 m <sup>2</sup>
4 Sacristy	18 m <sup>2</sup>
5 Sacristi wardrobe and bathroom	8 m <sup>2</sup>
6 Toilets	7 m <sup>2</sup>
7 Storage	7 m <sup>2</sup>

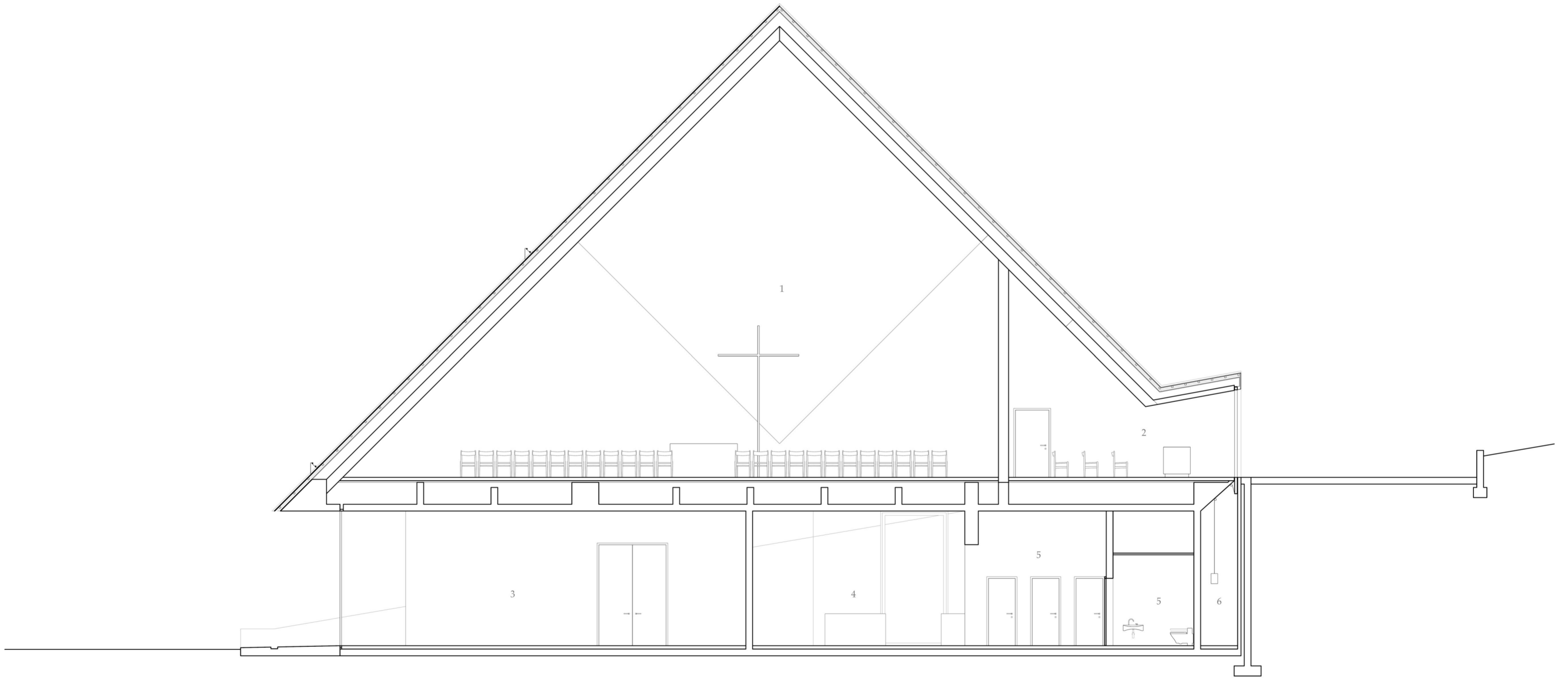


1 Community space	116 m2
2 Kitchen	39 m2
3 Kitchen staff	9 m2
4 Group space / Lounge	66 m2
5 Scouts space	62 m2
6 Wardrobe	14 m2
7 Toilets	24 m2
8 Storage	48 m2
9 Technical	32 m2
10 Wash room	2 m2
11 Garbage room	5 m2



- 1 Church space
- 2 Hallway space
- 3 Kitchen
- 4 Outside space





- 1 Church space
- 2 Baptismal chapel
- 3 Group room / lounge
- 4 Hallway
- 5 Toilets
- 6 Technical (window space)





