

Marine Research Cluster in Bergen



What is here today

The Marine Research Cluster consists of three institutions.

The institute of Marine Research, IMR

National Institute for Nutrition and Seafood Research, NIFES

The Directorate of Fisheries, DF

Together they form a cluster of smaller structures located within an area 600m in length.



Existing buildings of IMR, Nifes and the Directorate of Fisheries

Proposed site 



Thesis

The theme of my diploma to extend the Marine Research Cluster in Bergen, and dealing with the local and broader context of architecture.

The project is a public building for education, an auditorium for conventions, and a new laboratory building, while at the same time accomodating for visit from research vessels.

The site is located on the waterfront between the historic and post-war context in the center of Bergen. I propose a point of gathering for the Institute of Marine Research, Directorate of Fisheries, and the National Institute of Nutrition and Seafood Research.

The aim is to create a closer relationship between the research community, the sea and the urban and social context of the city.

View to the site



Challenge

The growth of the three institutions happened gradually, and they are now pressed for space, while political and economic forces are pressuring for relocation, probably to a more industrial site outside of the city centre.

There is a need for educational facilities, an auditorium for lectures or events, and more space for laboratories.

The fleet of ships controlled by IMR frequently docks in Bergen for change of personnel and delivery of samples collected on their expeditions, making access for ship an advantage.



IMR Headquarters and laboratories



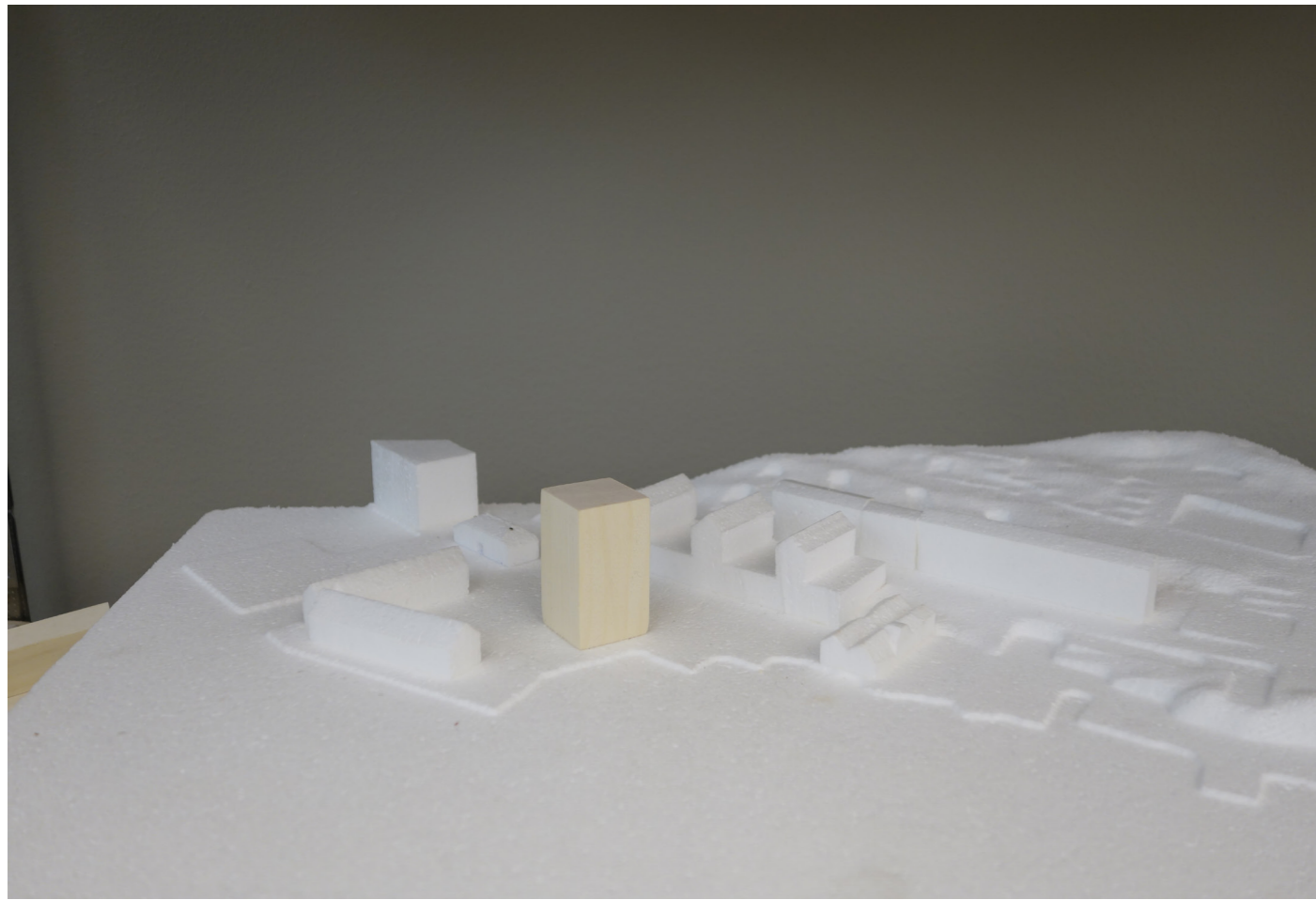
IMR office addition



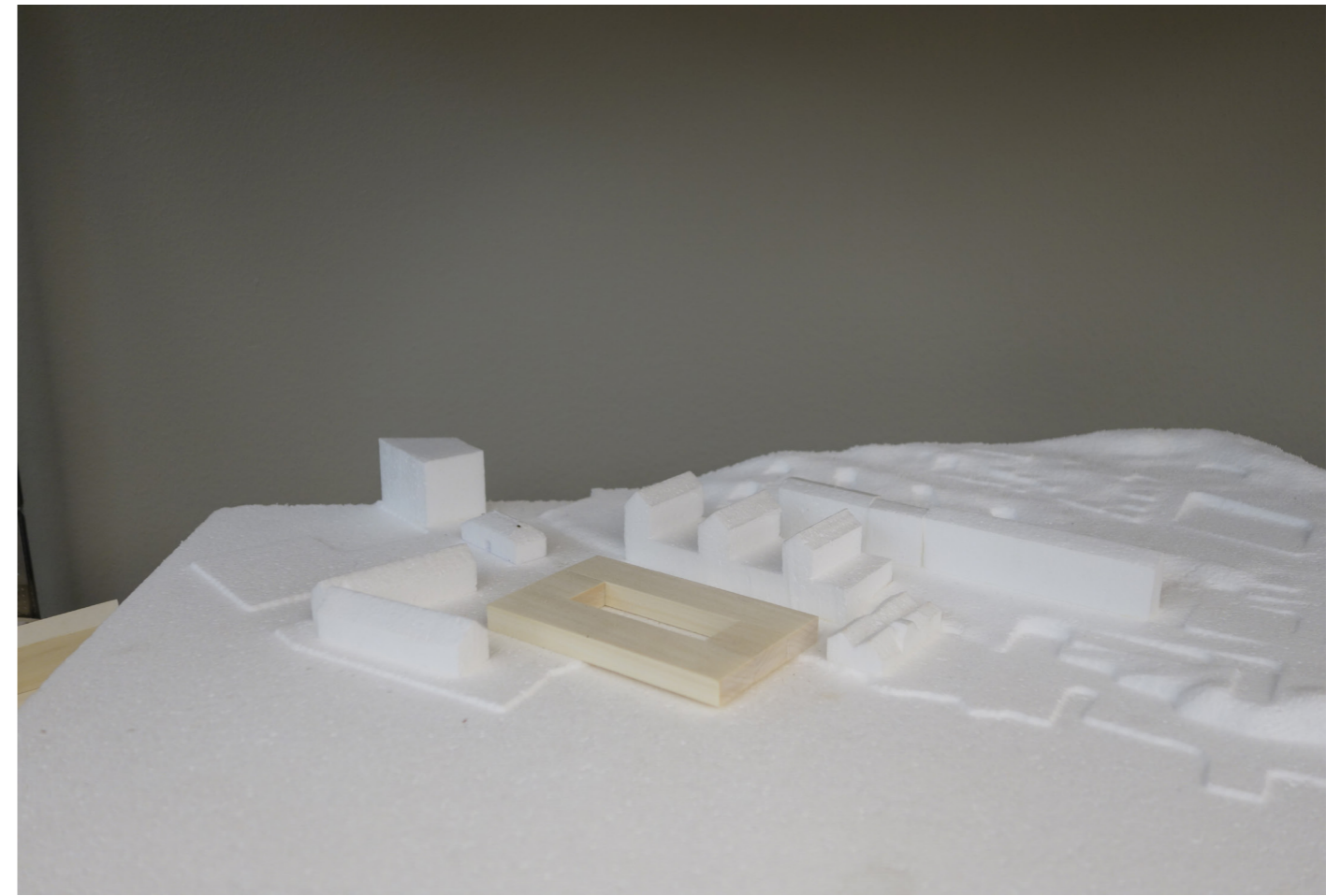
DF Headquarters



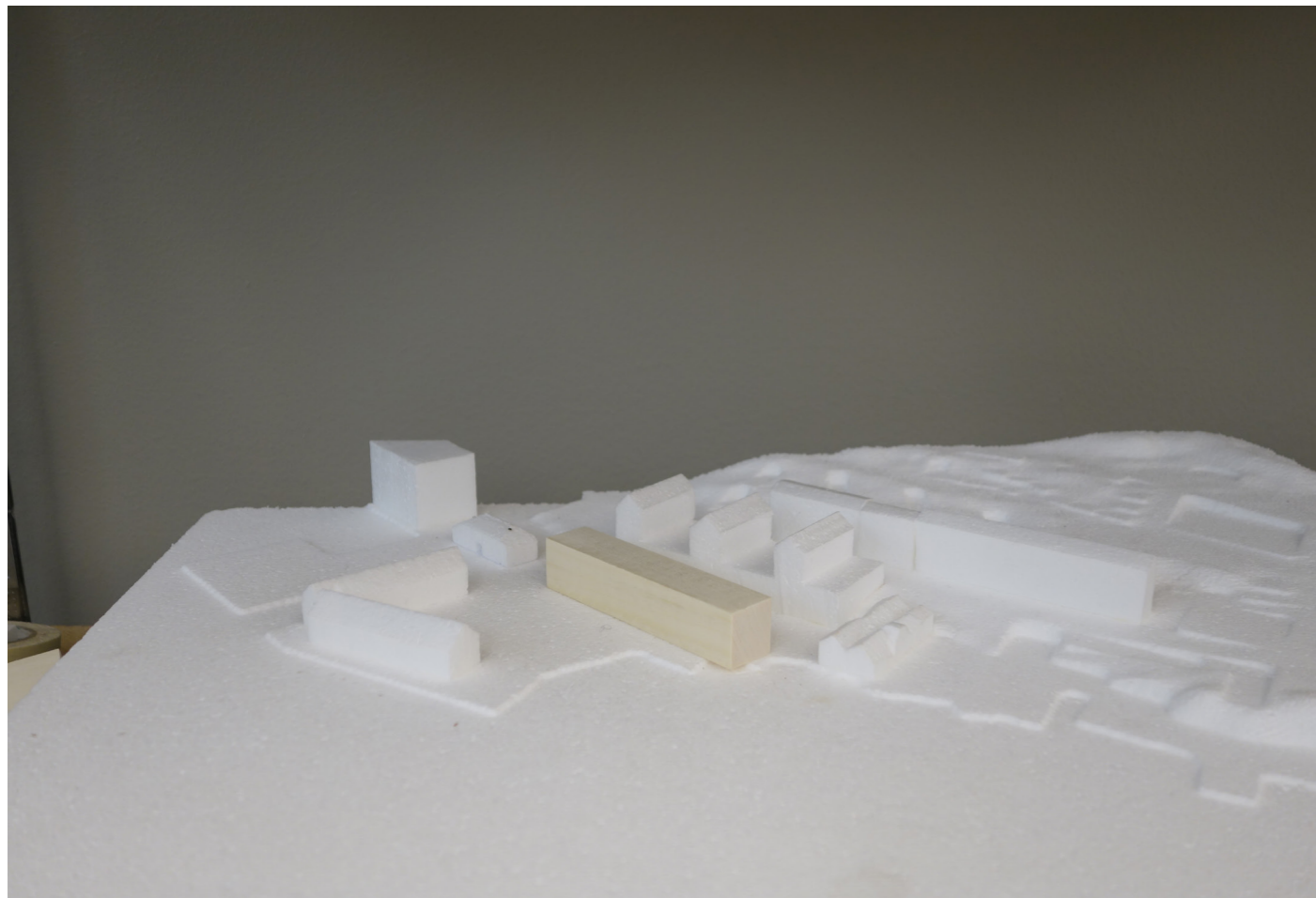
NIFES Headquarters



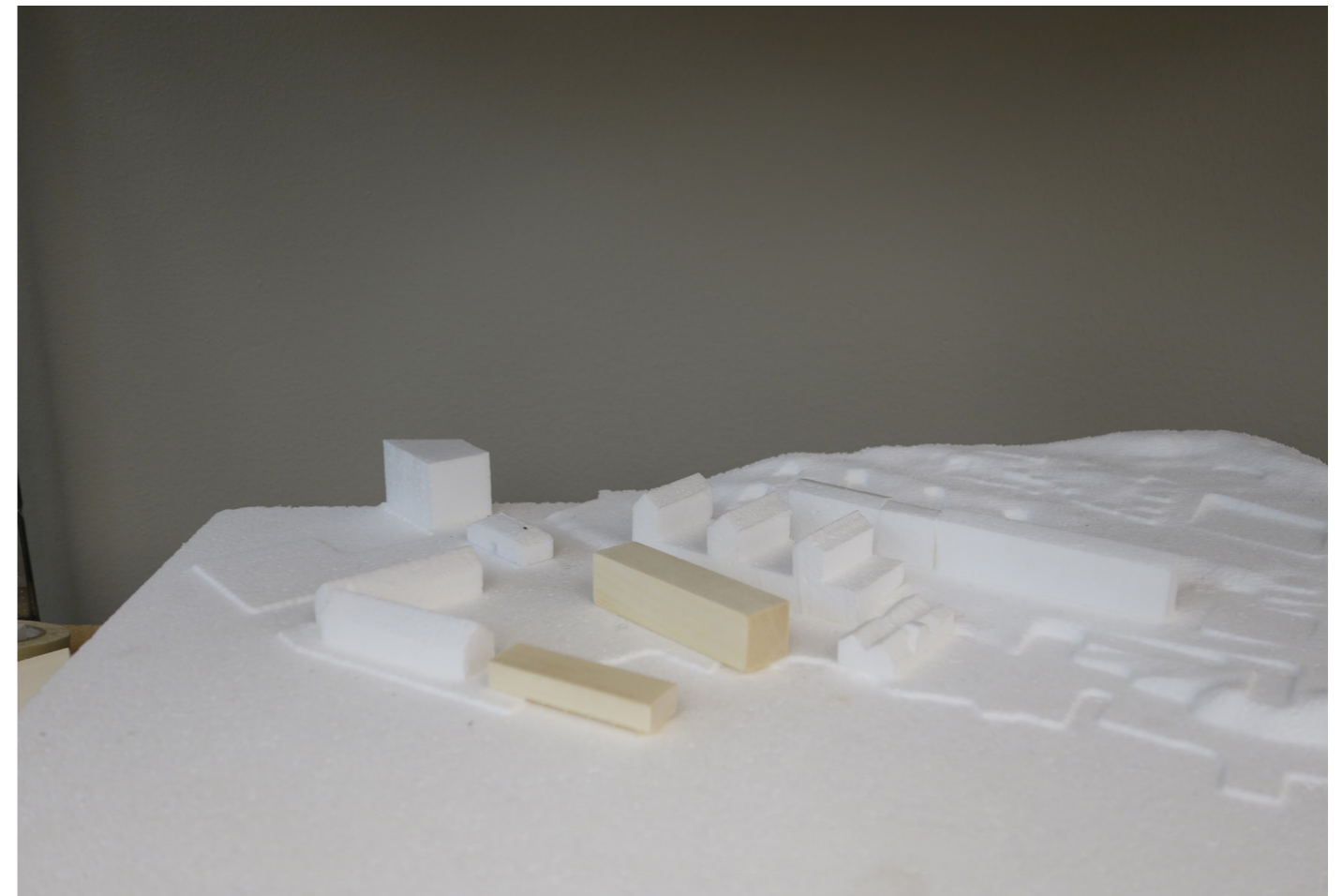
8000m2 as tower



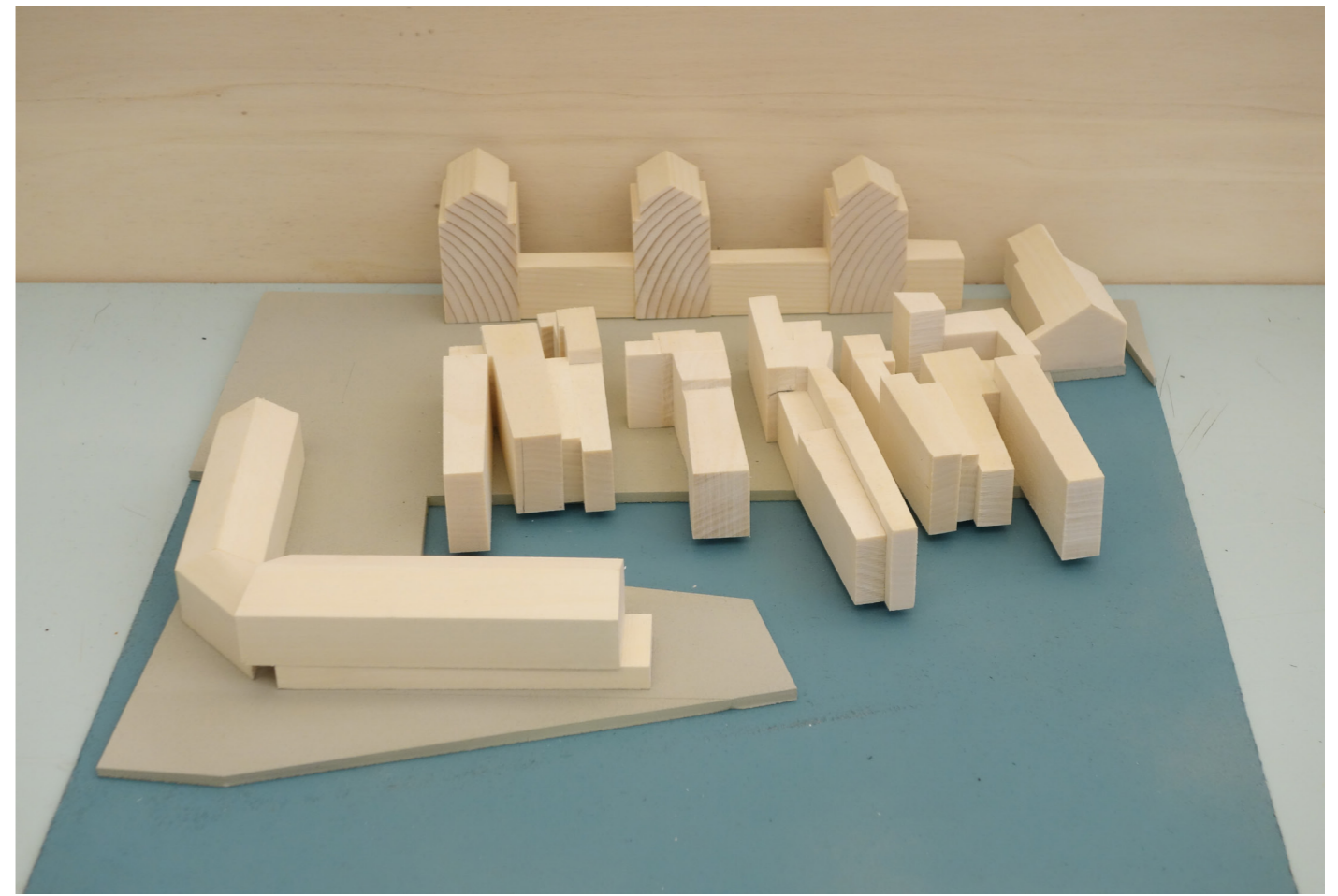
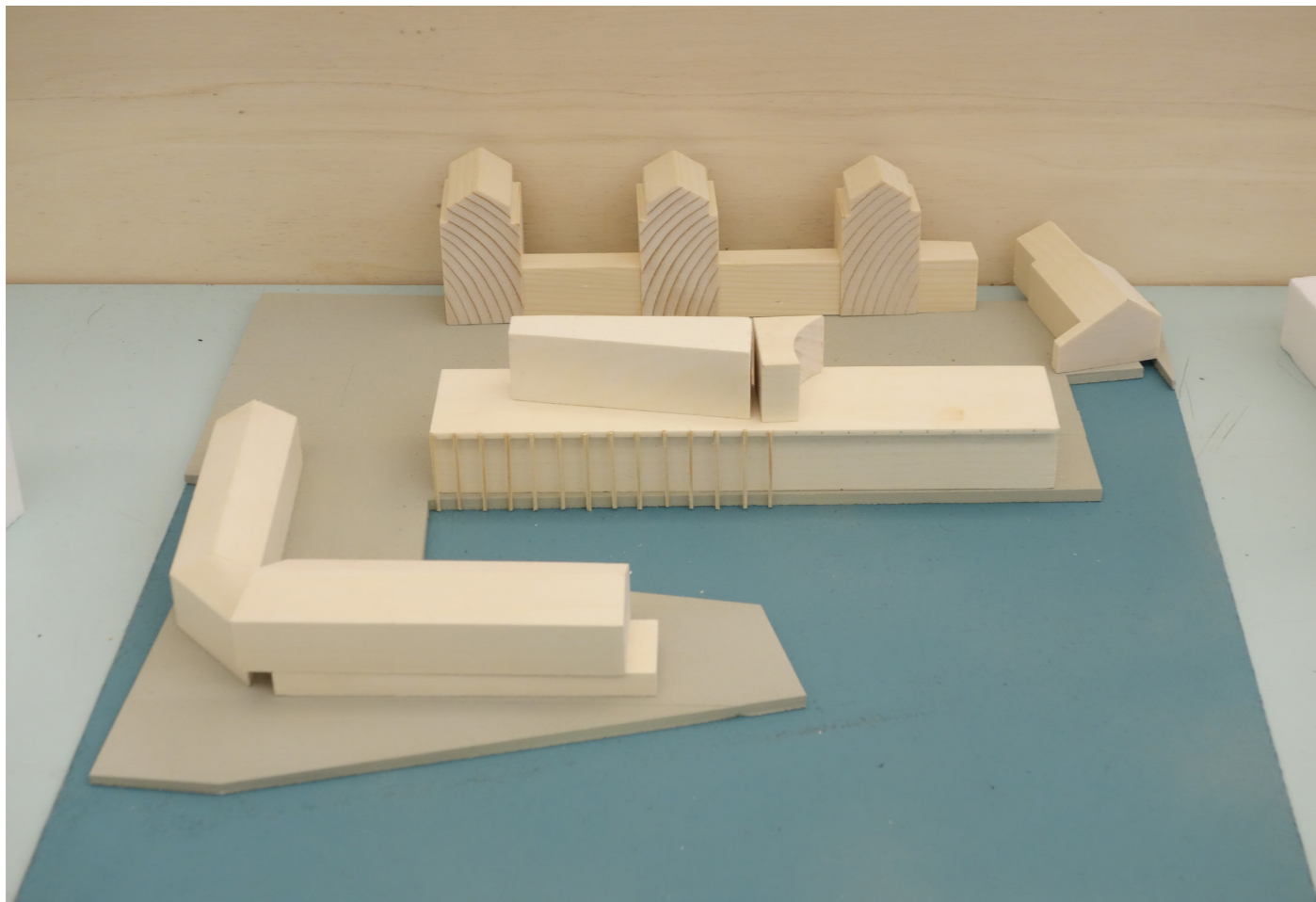
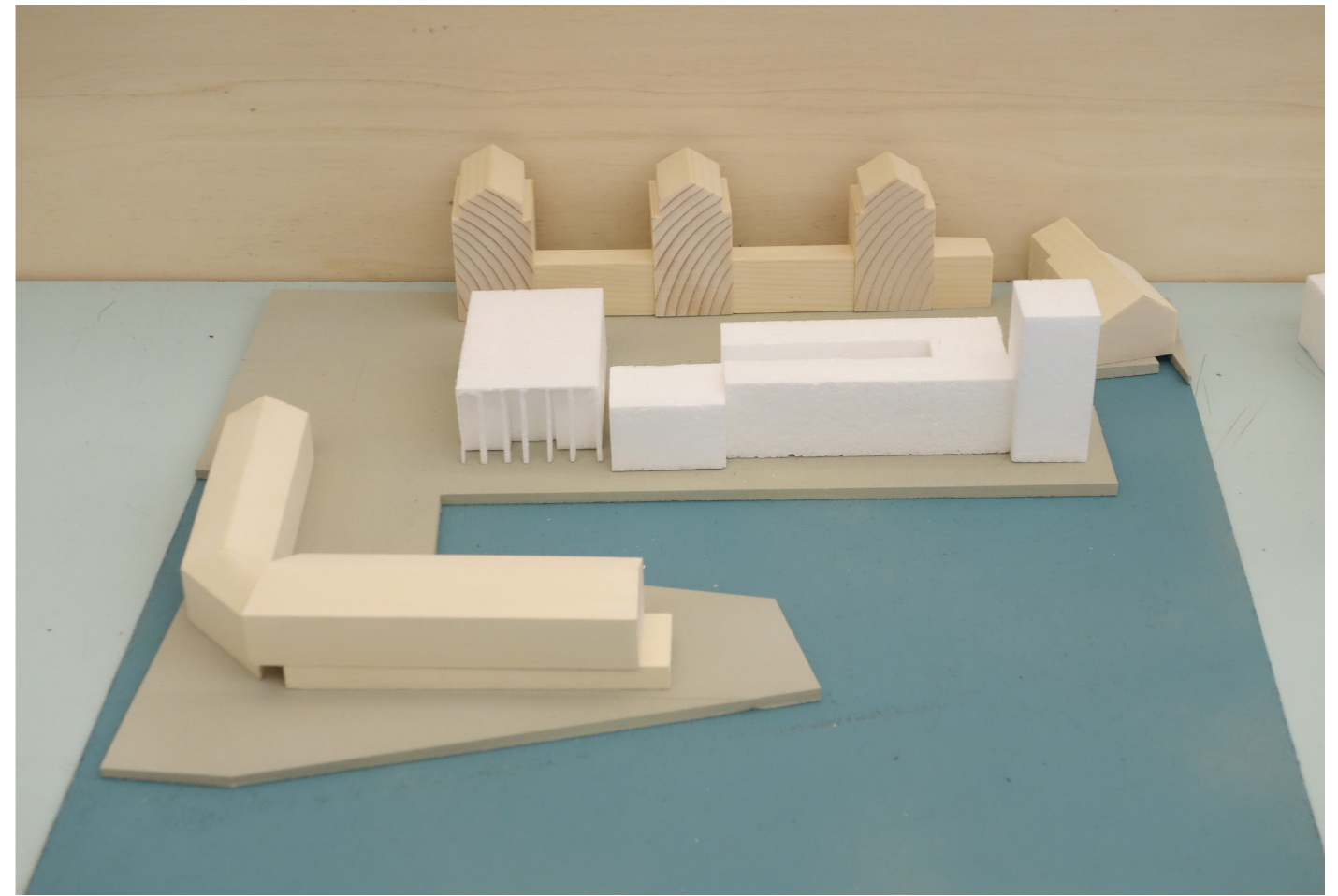
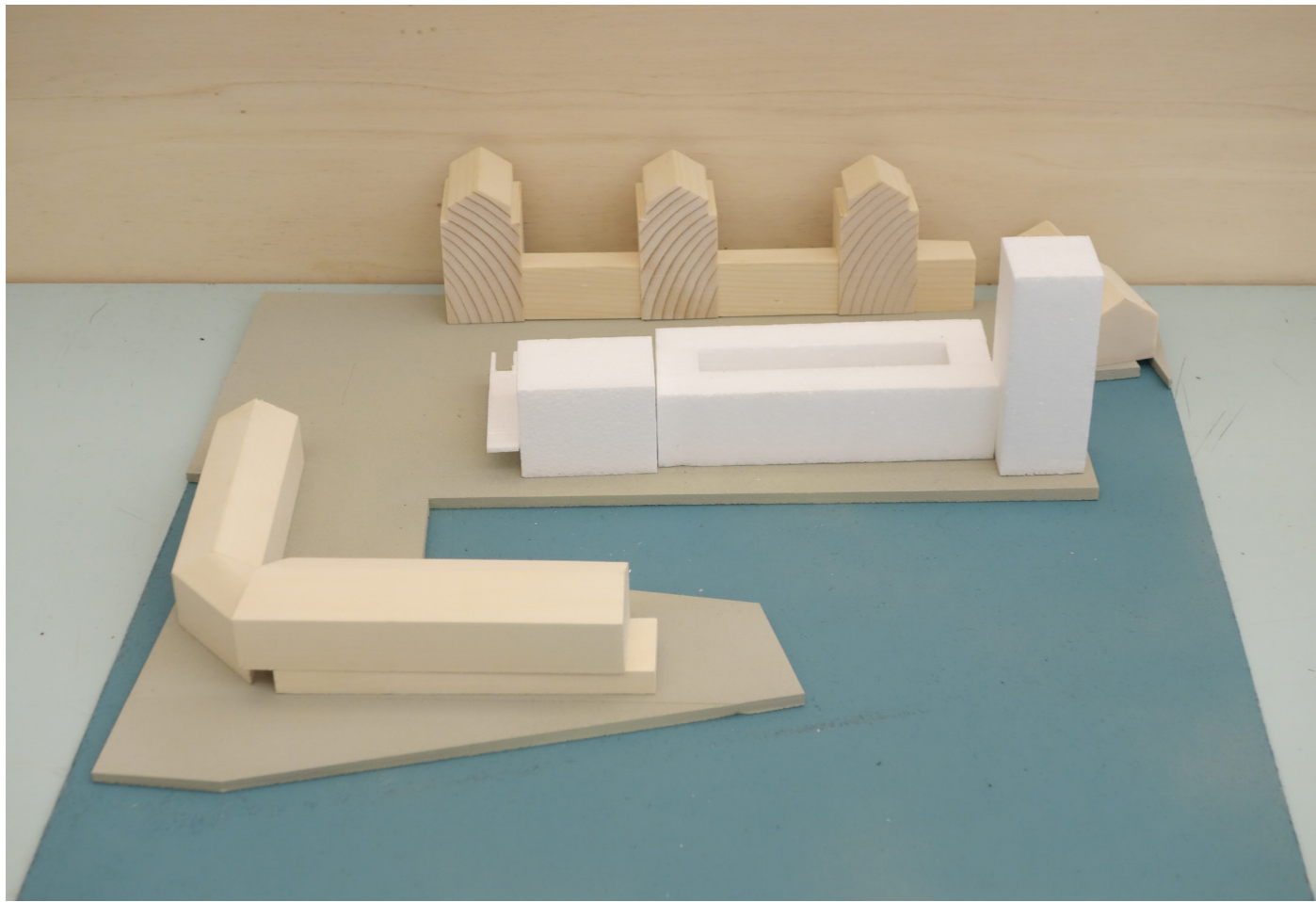
8000m2 as Perimeter

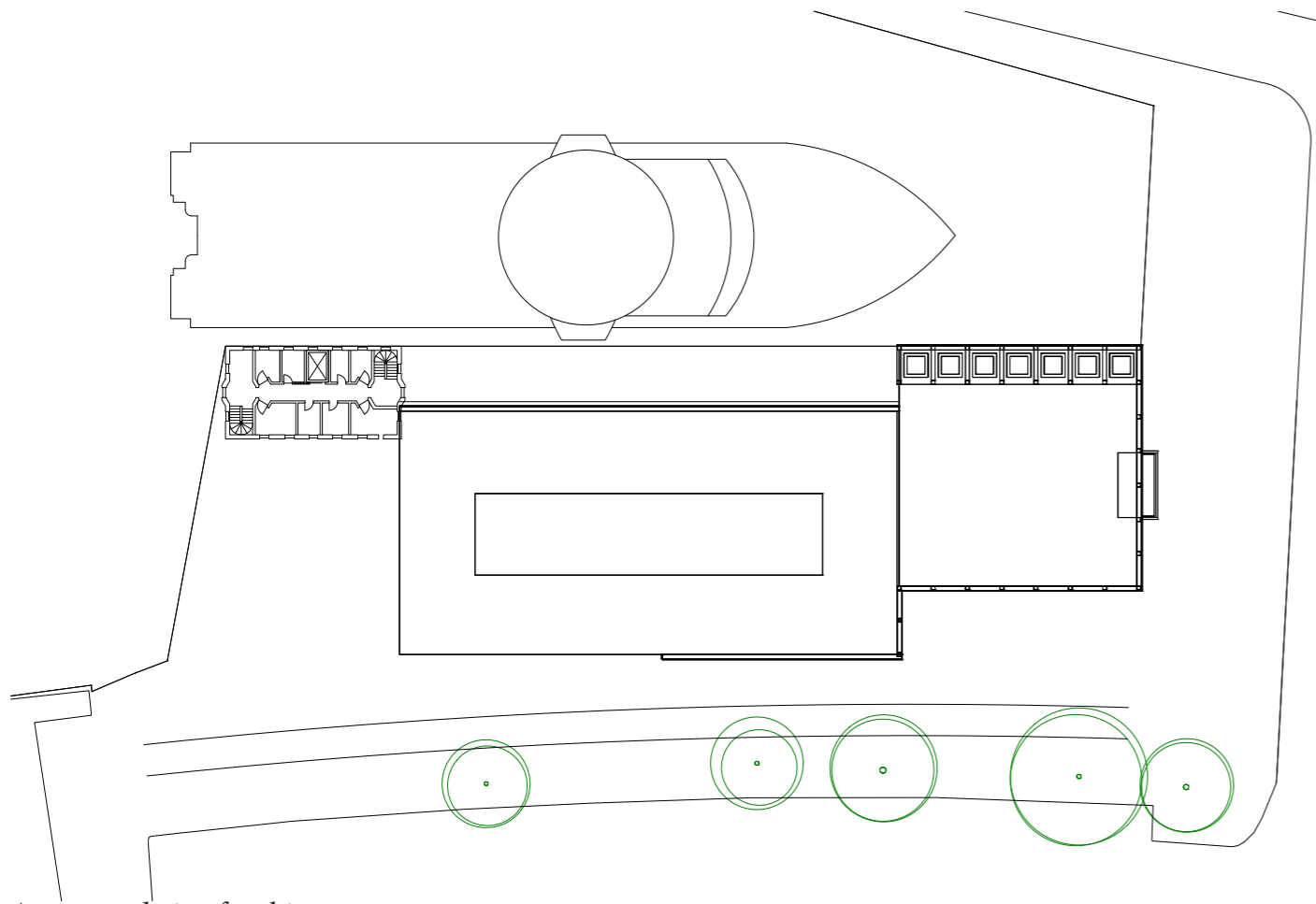


8000m2 as long slab

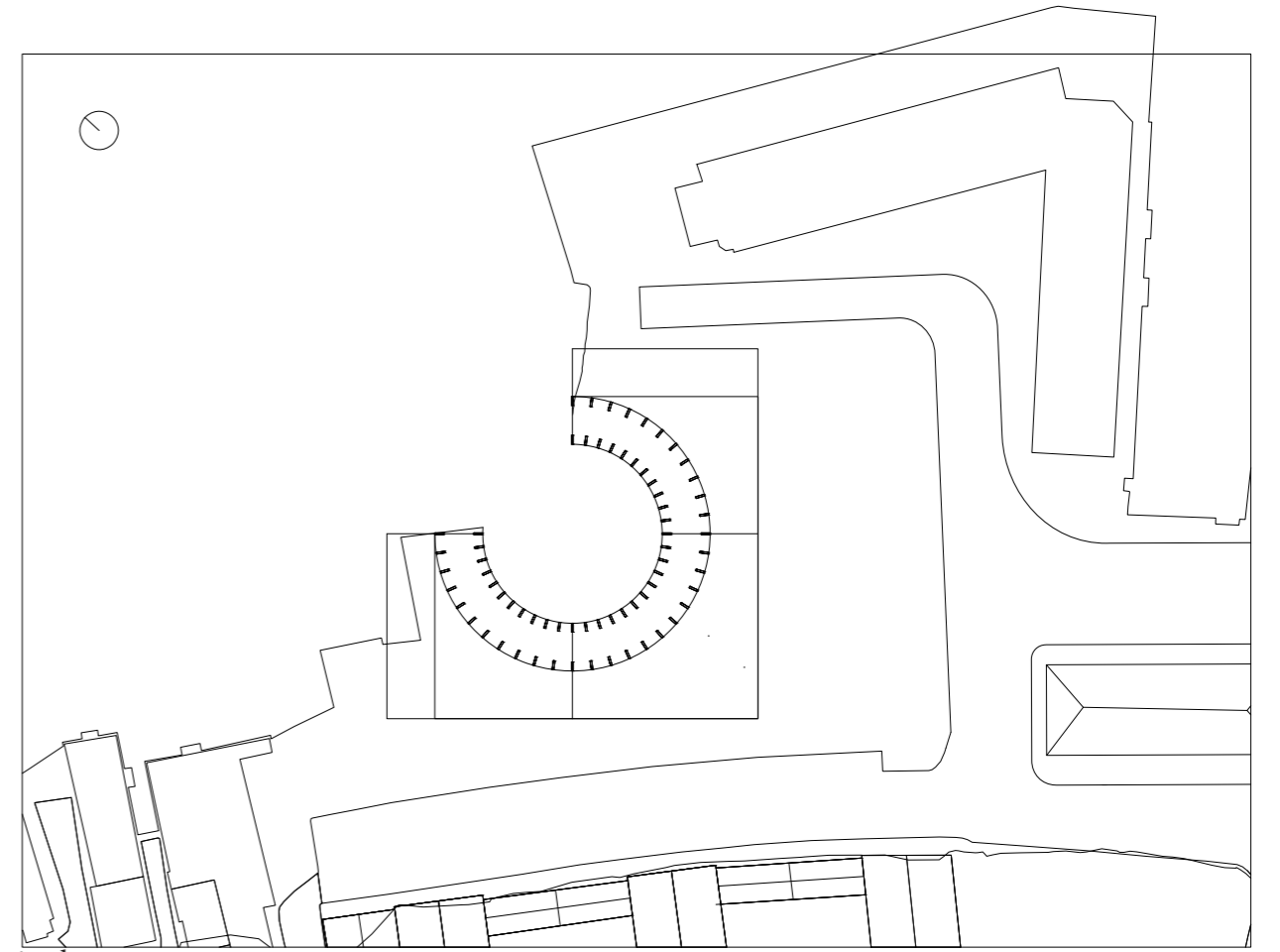


8000m2 as separate volumes

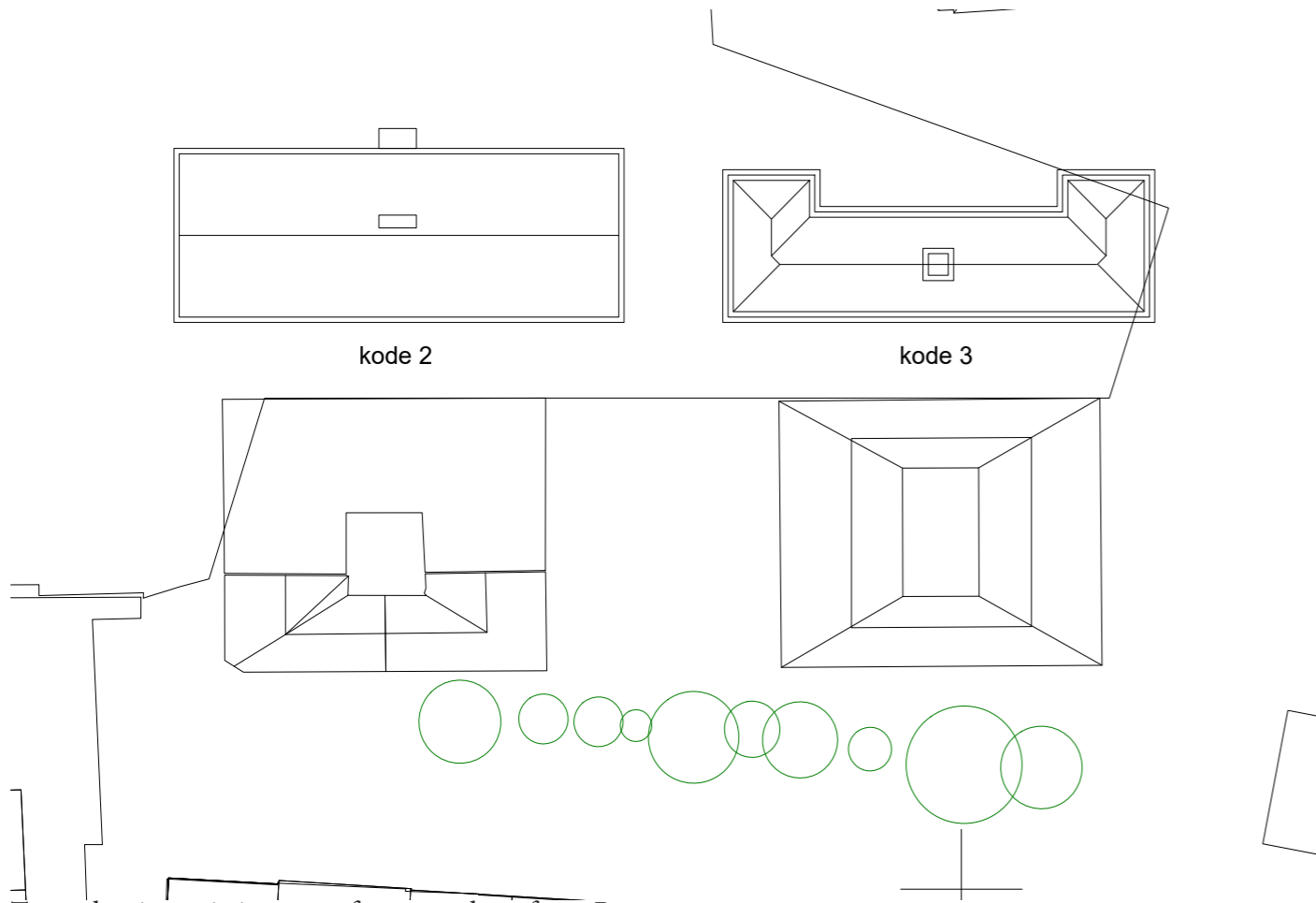




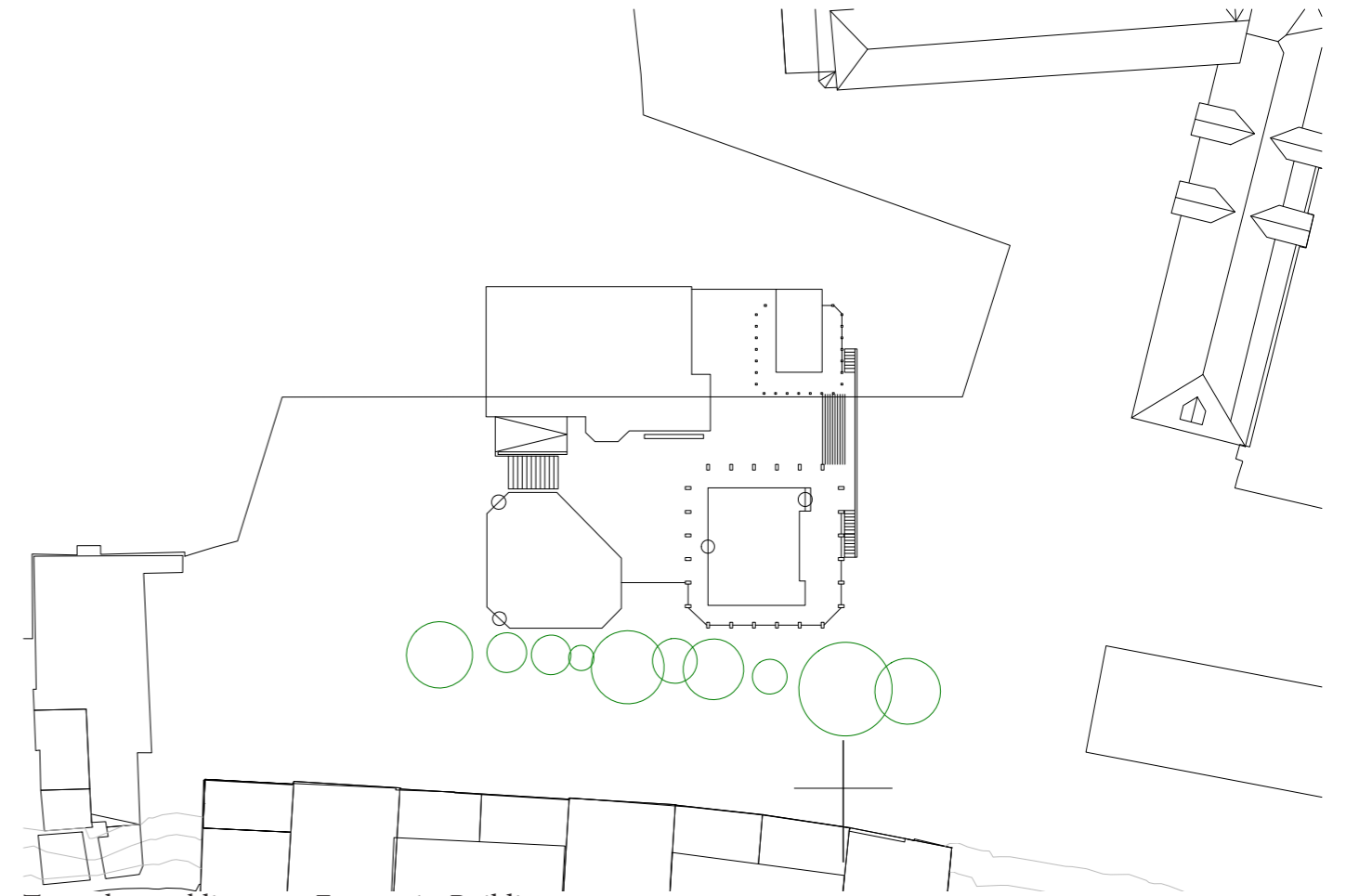
Accommodating for ship



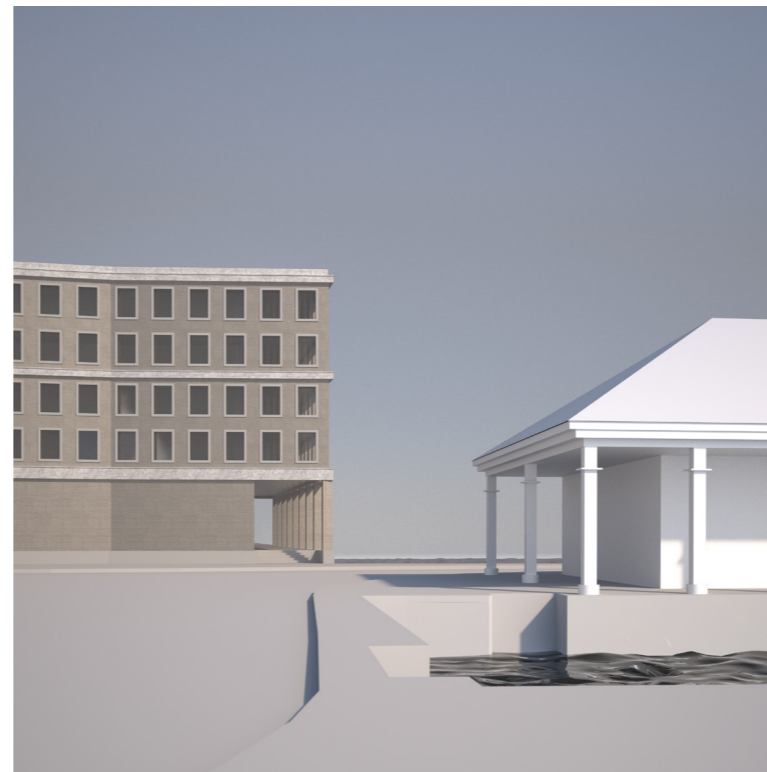
Bringing in the sea



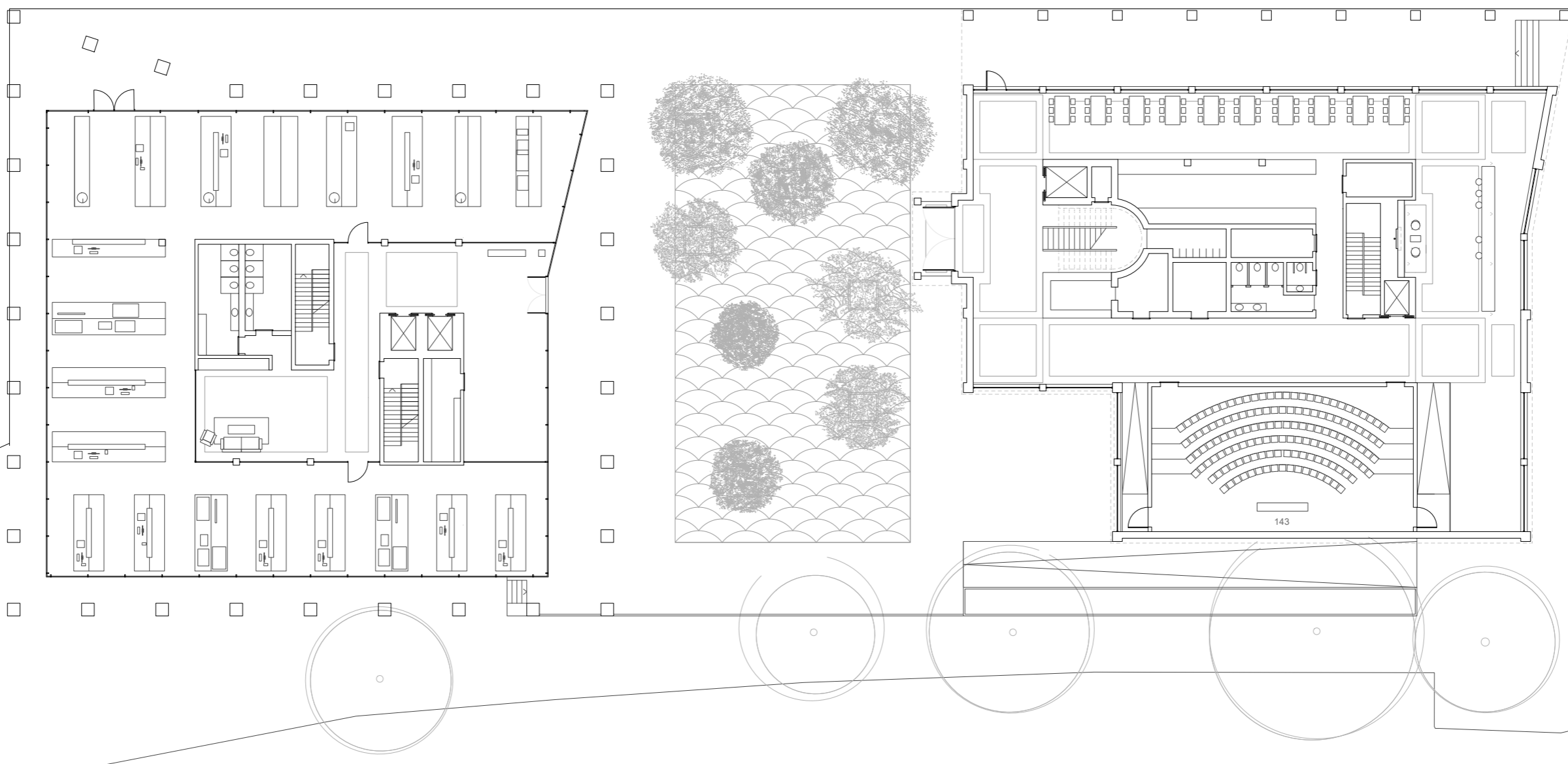
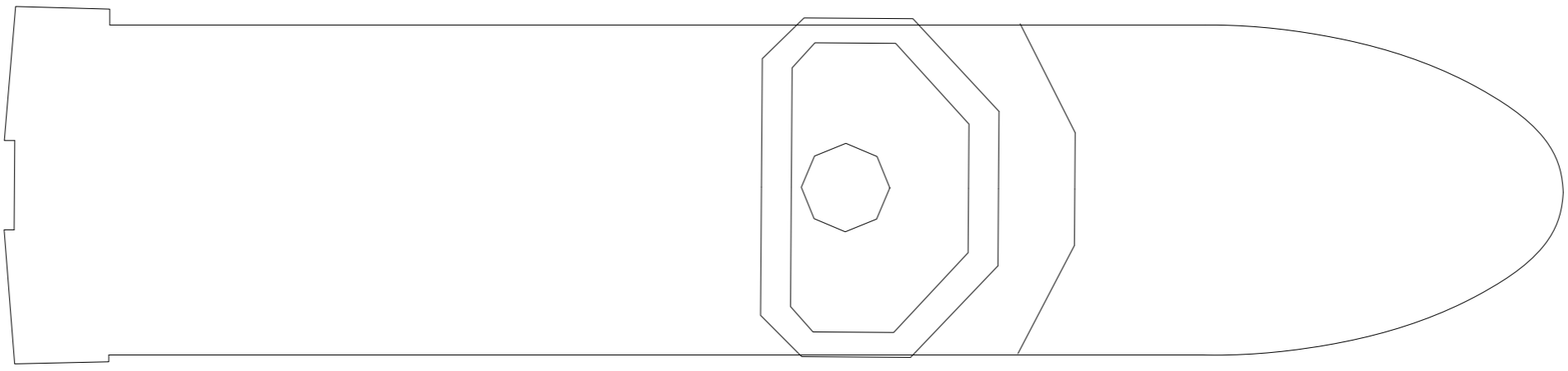
Transplanting existing waterfront typology from Bergen



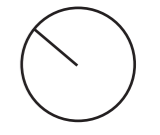
Transplant public space, Economist Building

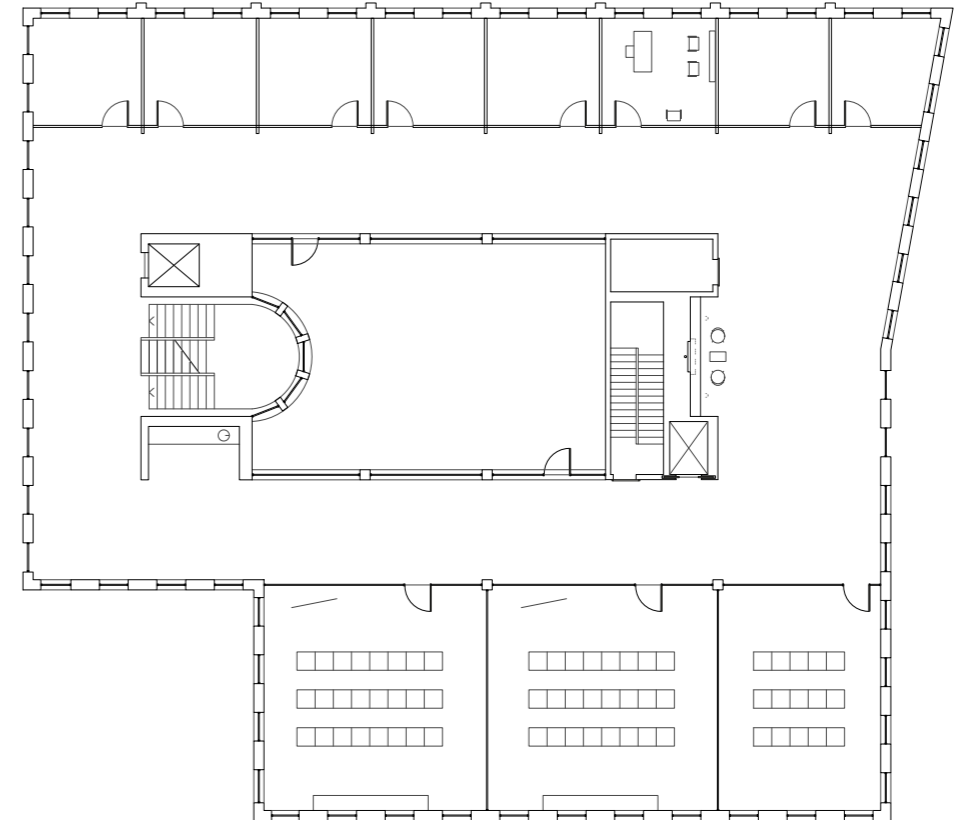
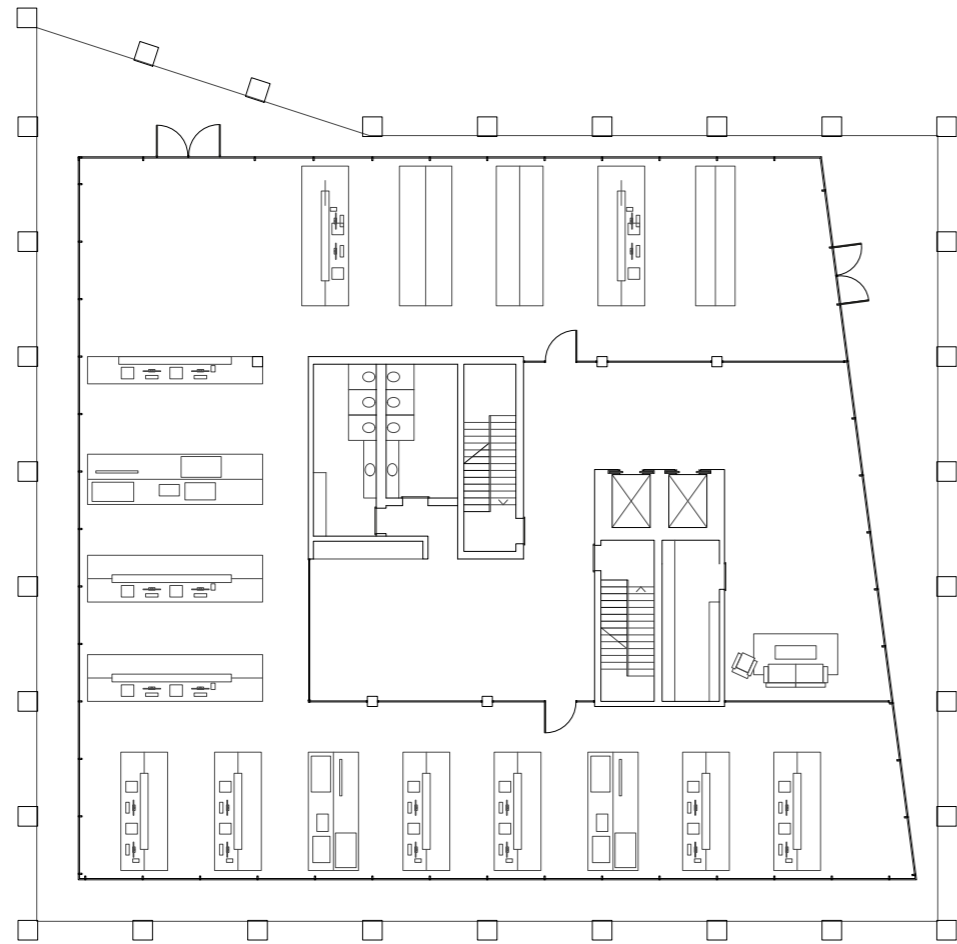


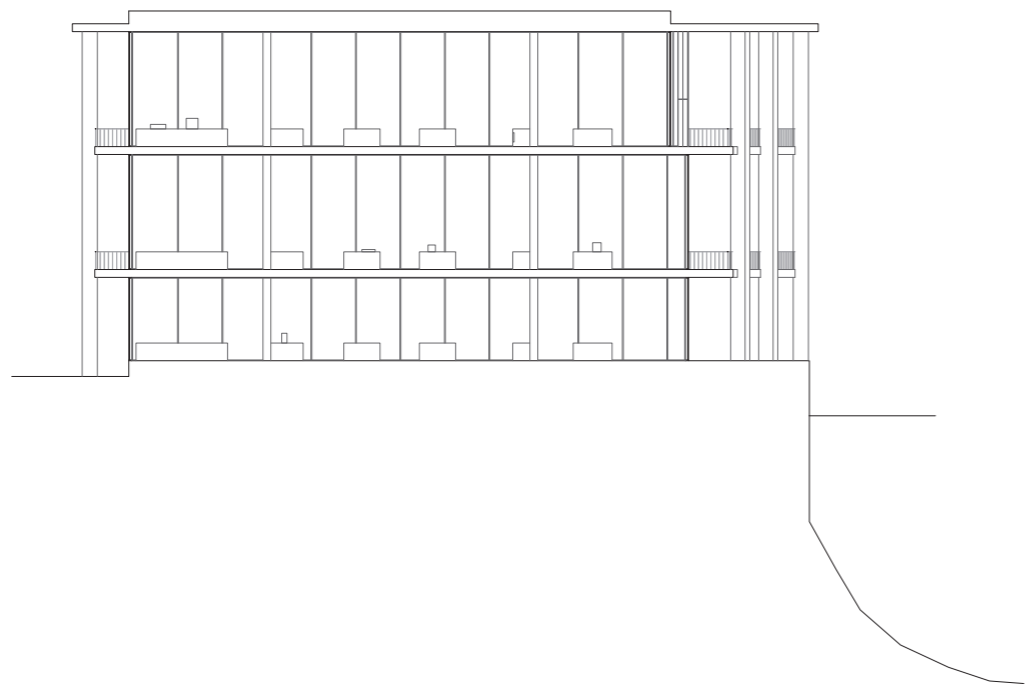
Concept for approaching the site



Ground Floor







Cross sections with the sea



Collonnade to the sea



Two buildings



Interior and the ship

