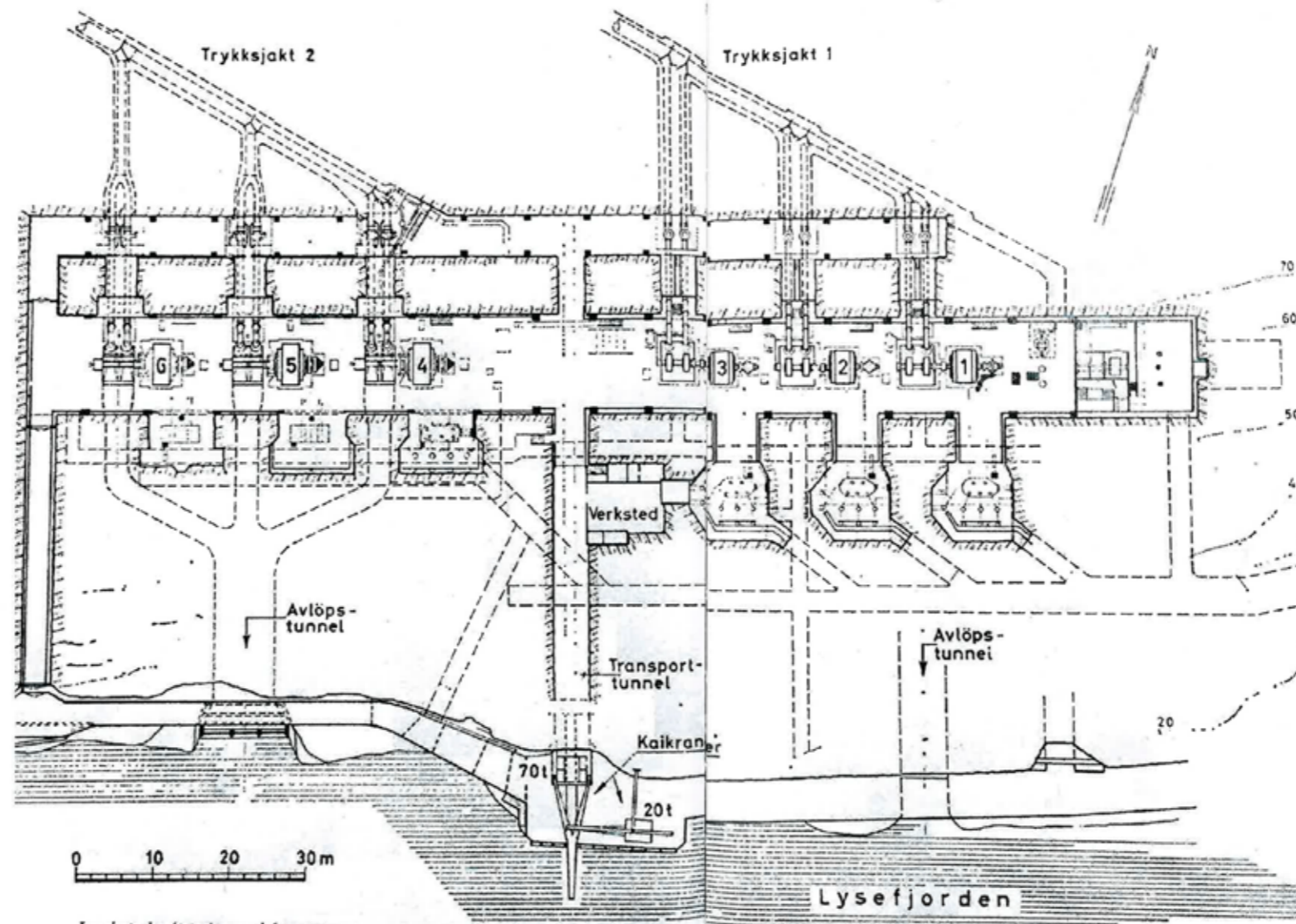


LYSEBOTN 1

Sleep

Eat

Bath



Lysebotn kraftstasjon med 6 aggregater.

De detaljerte tekniske tegningene ble utført med penn og linjal som hjelpemidler.

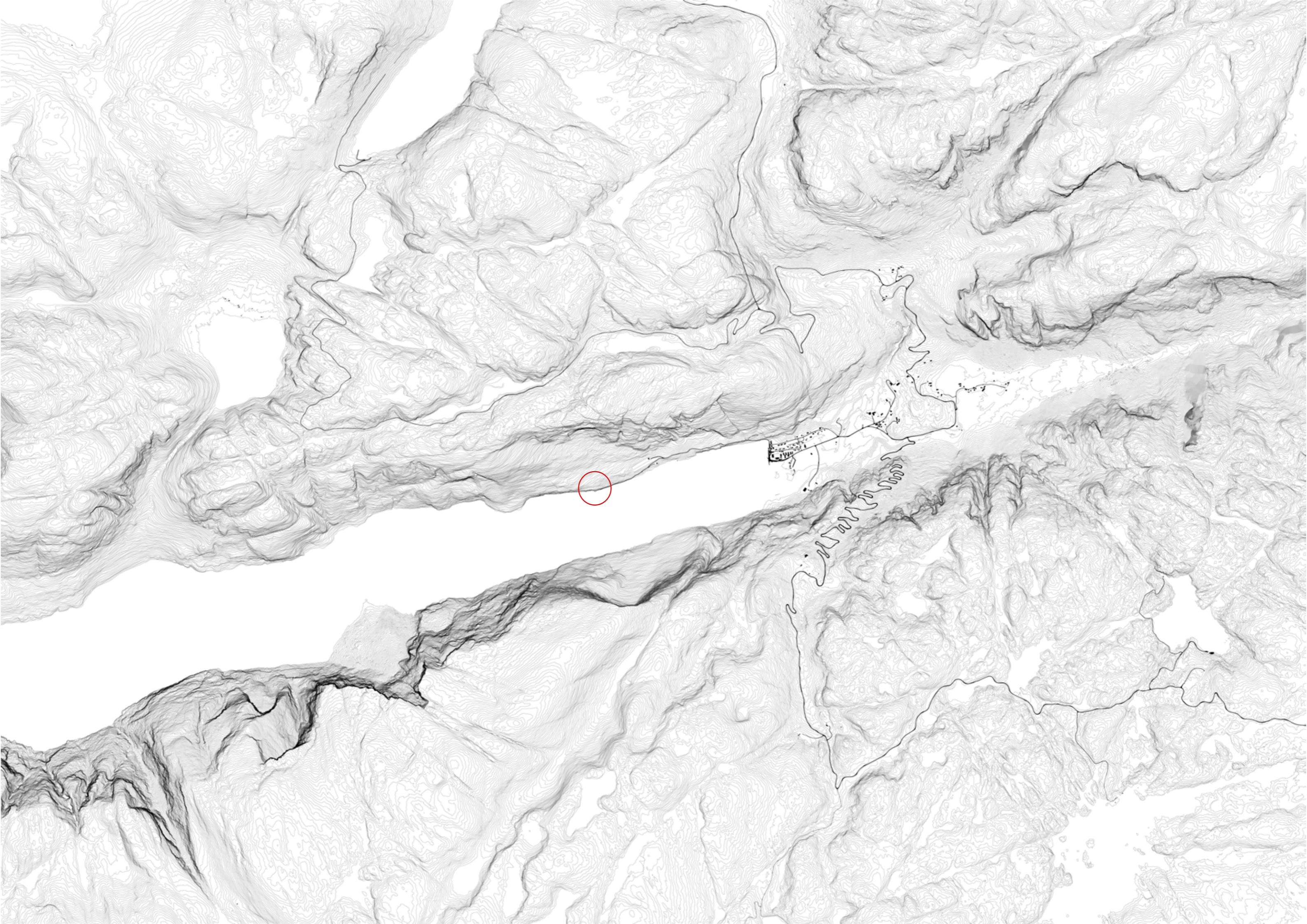




Site

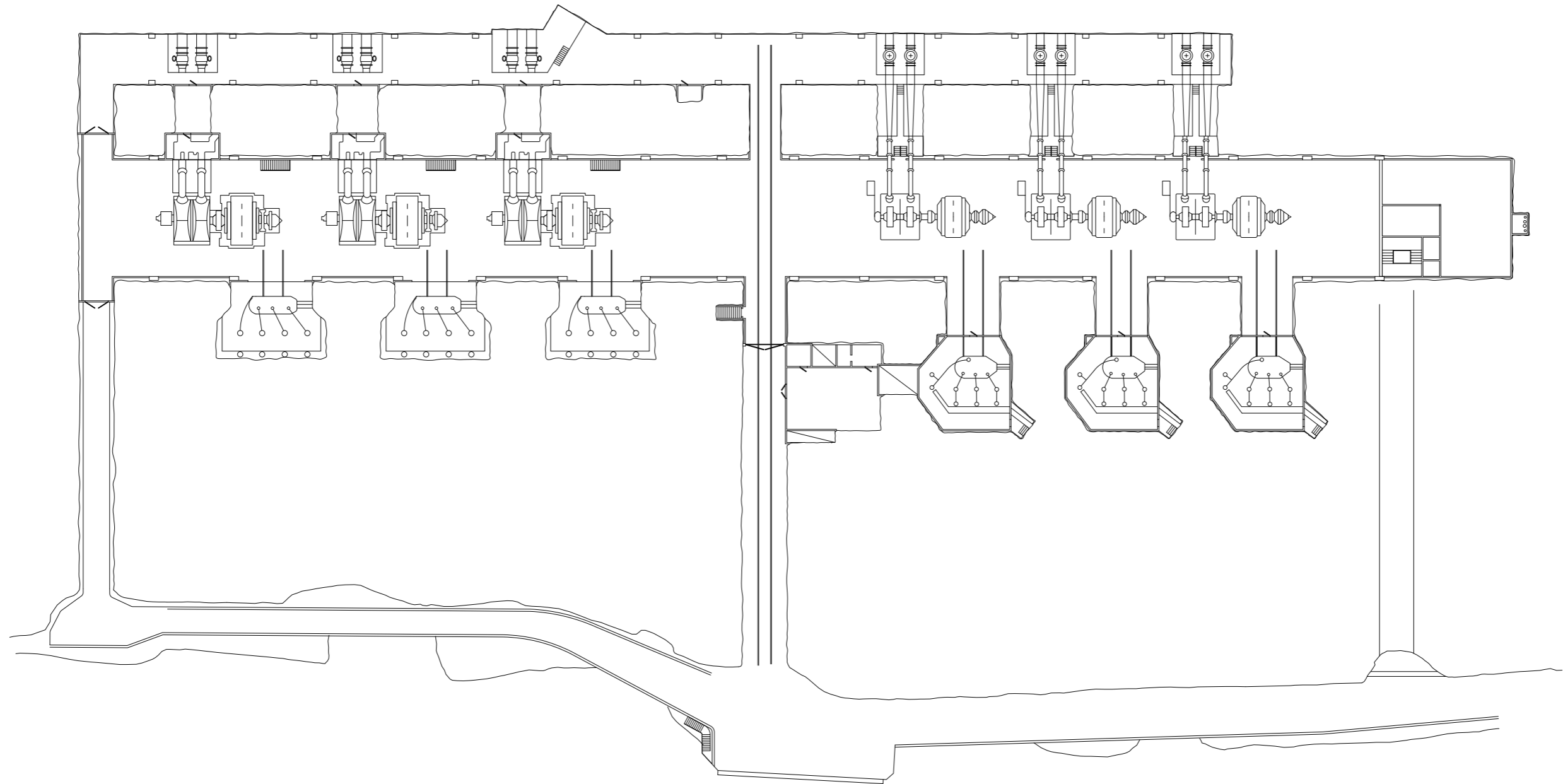












Facility







Grundriss
130m x 100m (ca. 13000m²)
1. Stockwerk
2. Stockwerk
3. Dach

Querschnitt
1. Stockwerk
2. Stockwerk
3. Dach

Detail
1. Stockwerk
2. Stockwerk
3. Dach

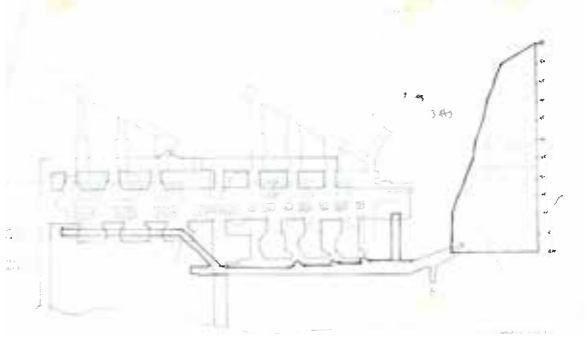
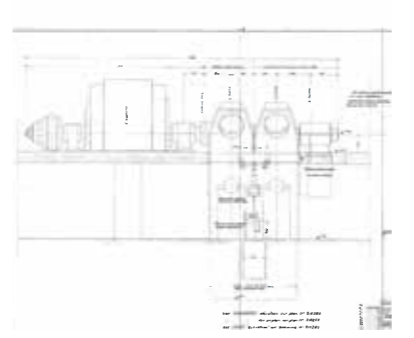
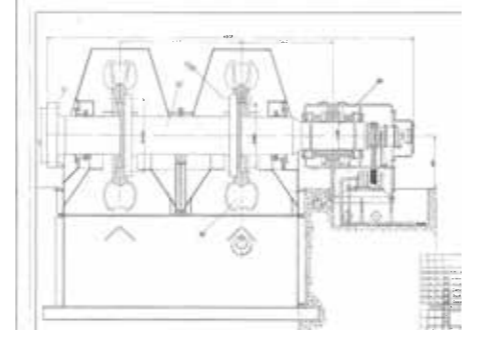
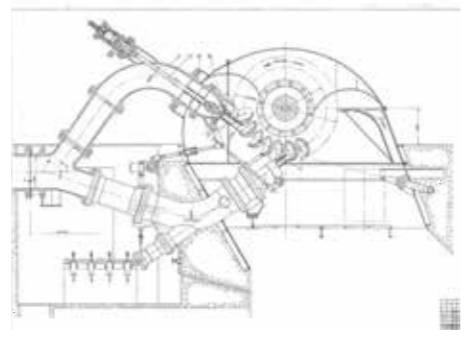
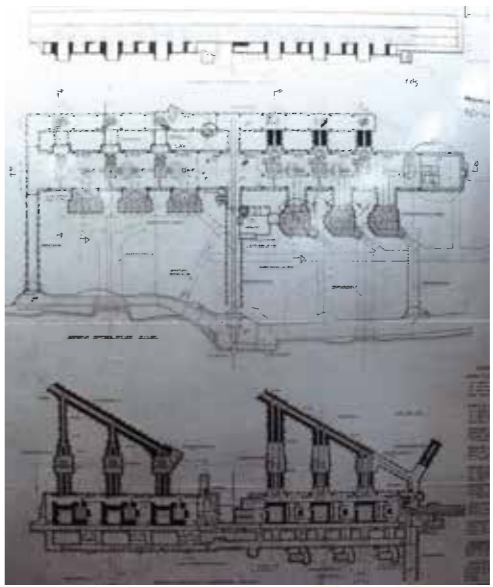
STRECKE + TREIBER
Trennung
1. Stockwerk
2. Stockwerk
3. Dach

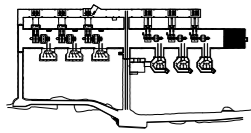
Trennung
1. Stockwerk
2. Stockwerk
3. Dach

Treiber
1. Stockwerk
2. Stockwerk
3. Dach

STRUKTUR
1. Stockwerk
2. Stockwerk
3. Dach

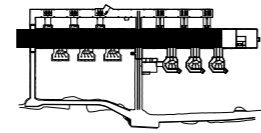
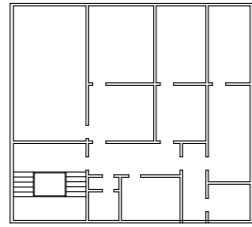
DETAIL
1. Stockwerk
2. Stockwerk
3. Dach





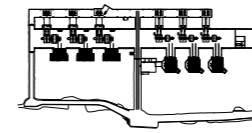
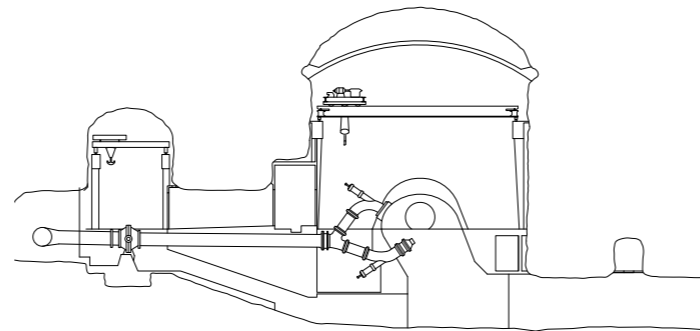
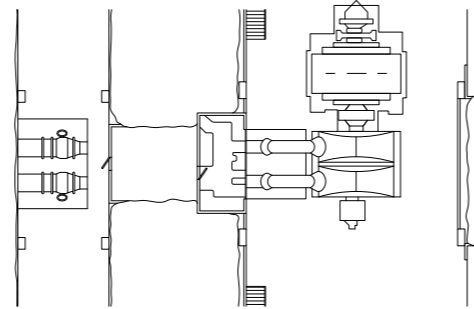
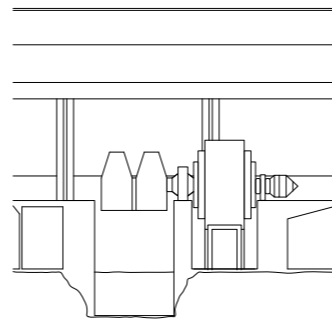
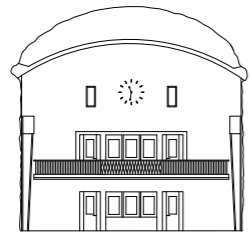
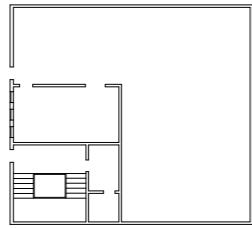
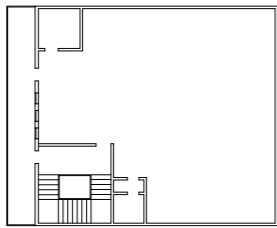
Controlroom

Width: 13,5M
Length: 14,5M
Height: 14M
Area: 543m2



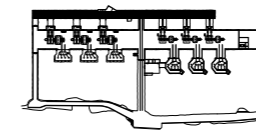
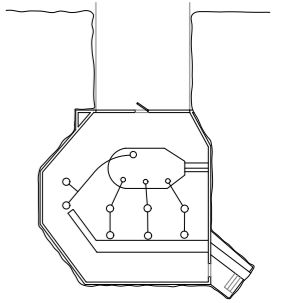
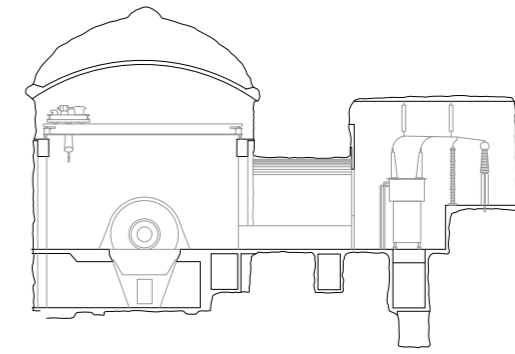
Generatorhall

Width: 13,5M
Length: 160M
Height: 20,5M
Area: 2000M2



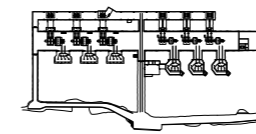
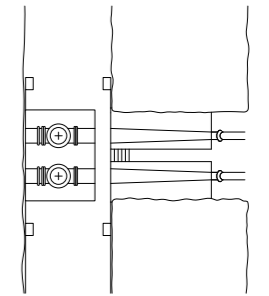
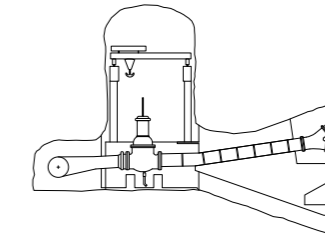
Transformatorhall 2

Width: 10m
Length: 16,5m
Height: 9,2m
Area: 396m2

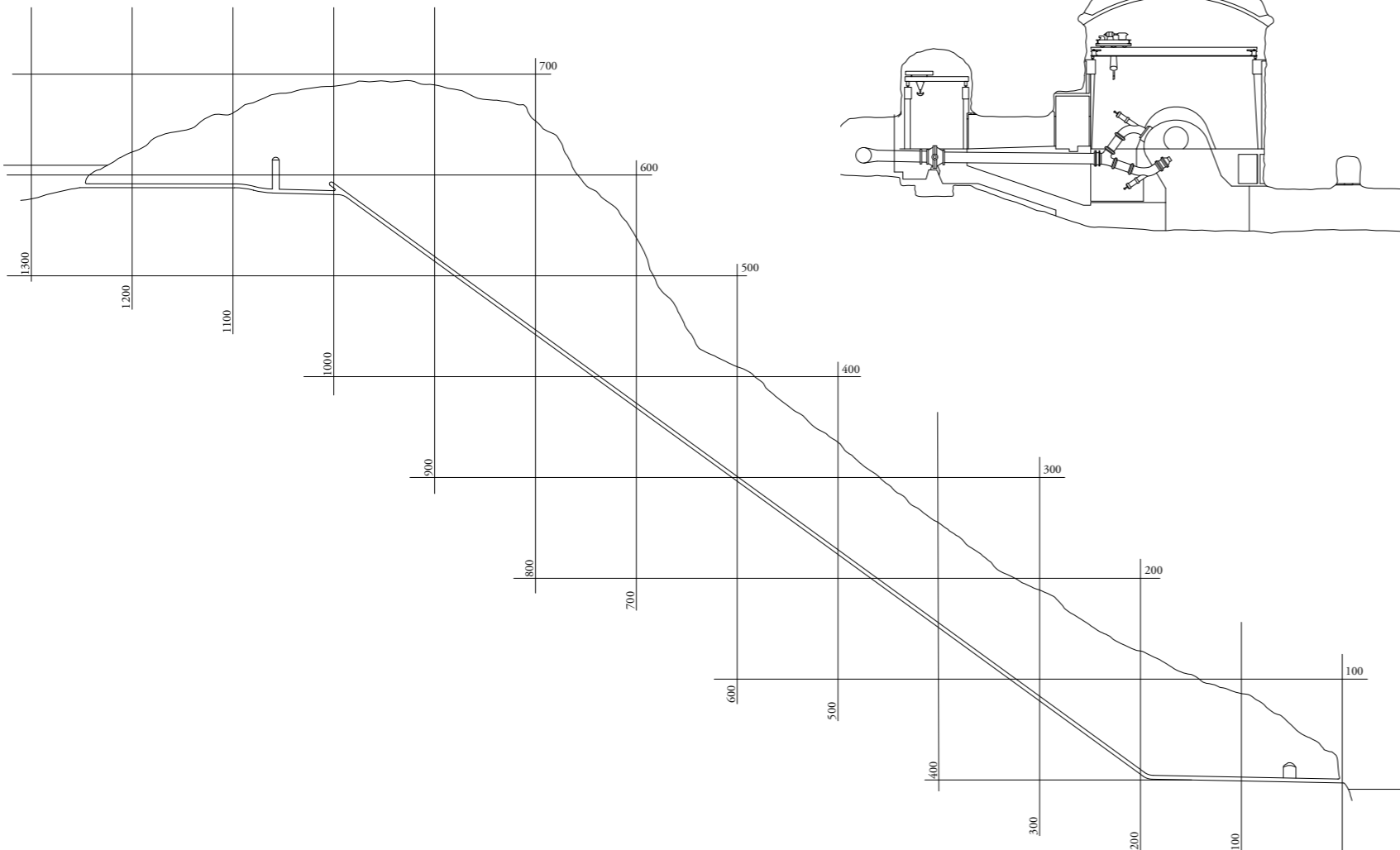
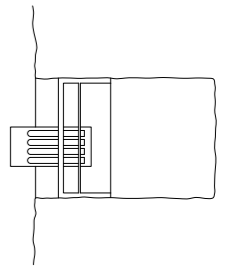
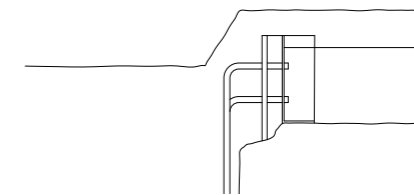


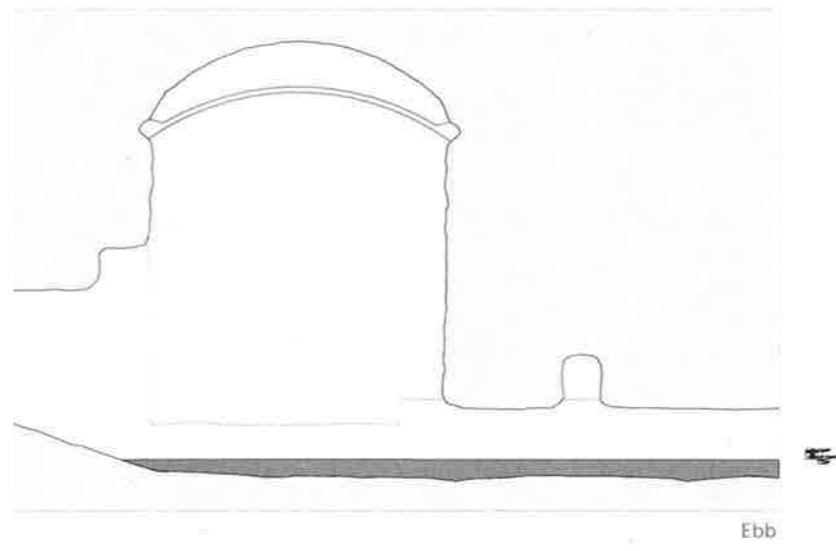
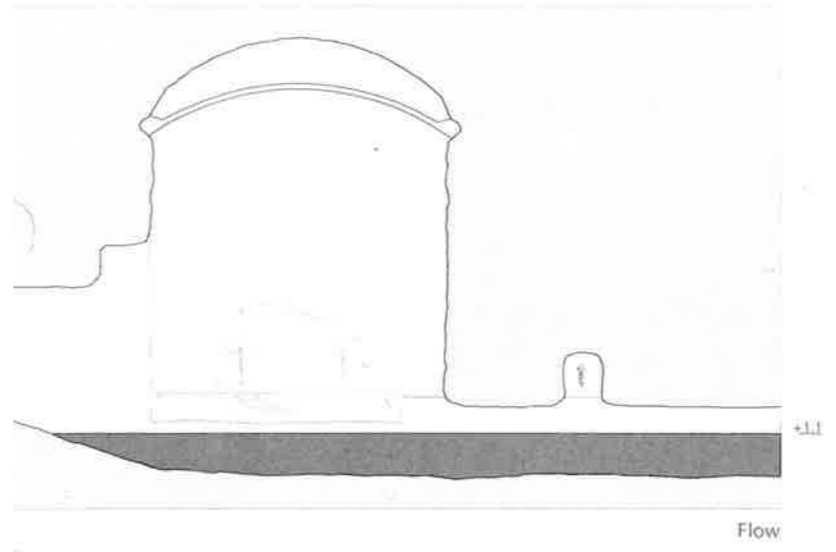
Valve hall

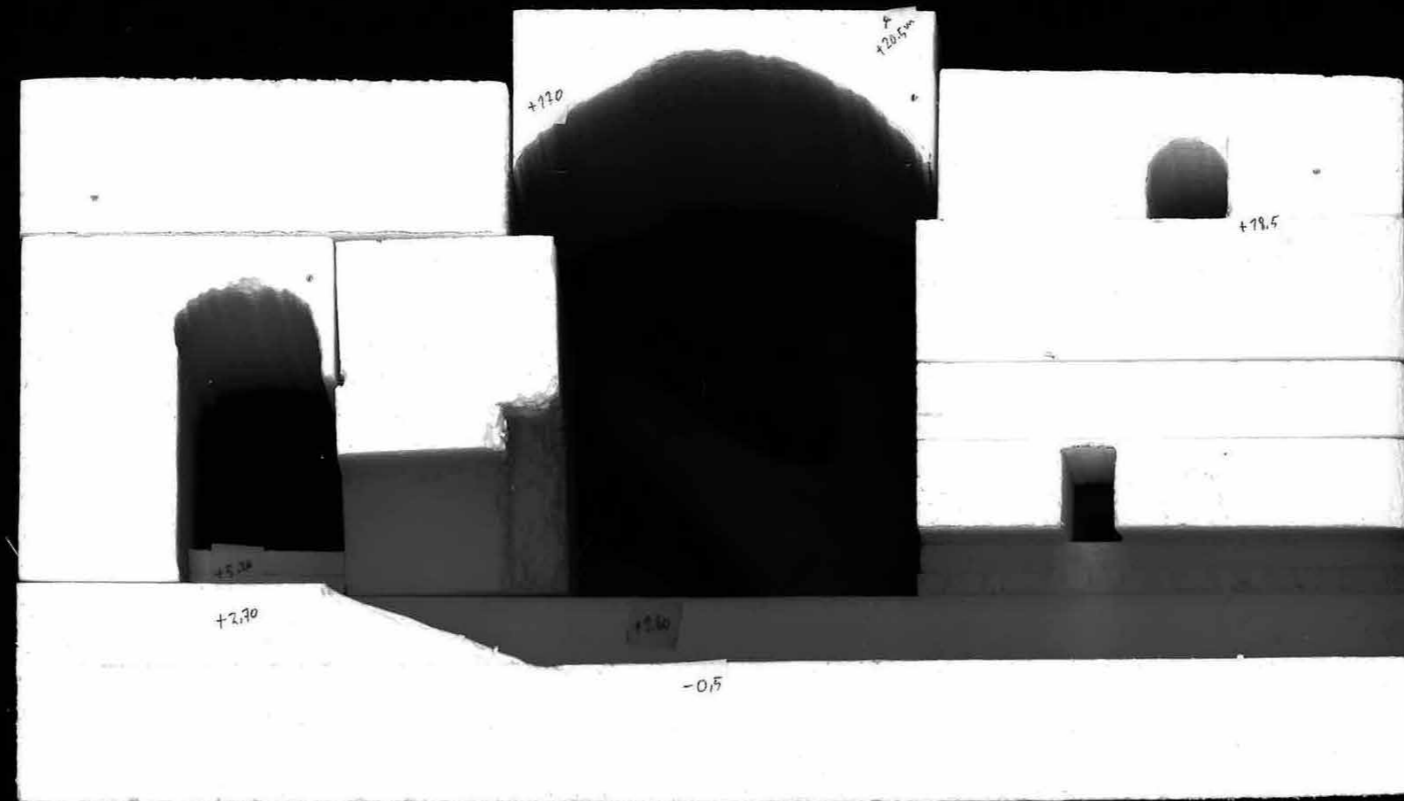
Bredde: 5,3m
Lengde: 130m
Høyde: 7.3m
Areal: 698m2



Cooling water pool





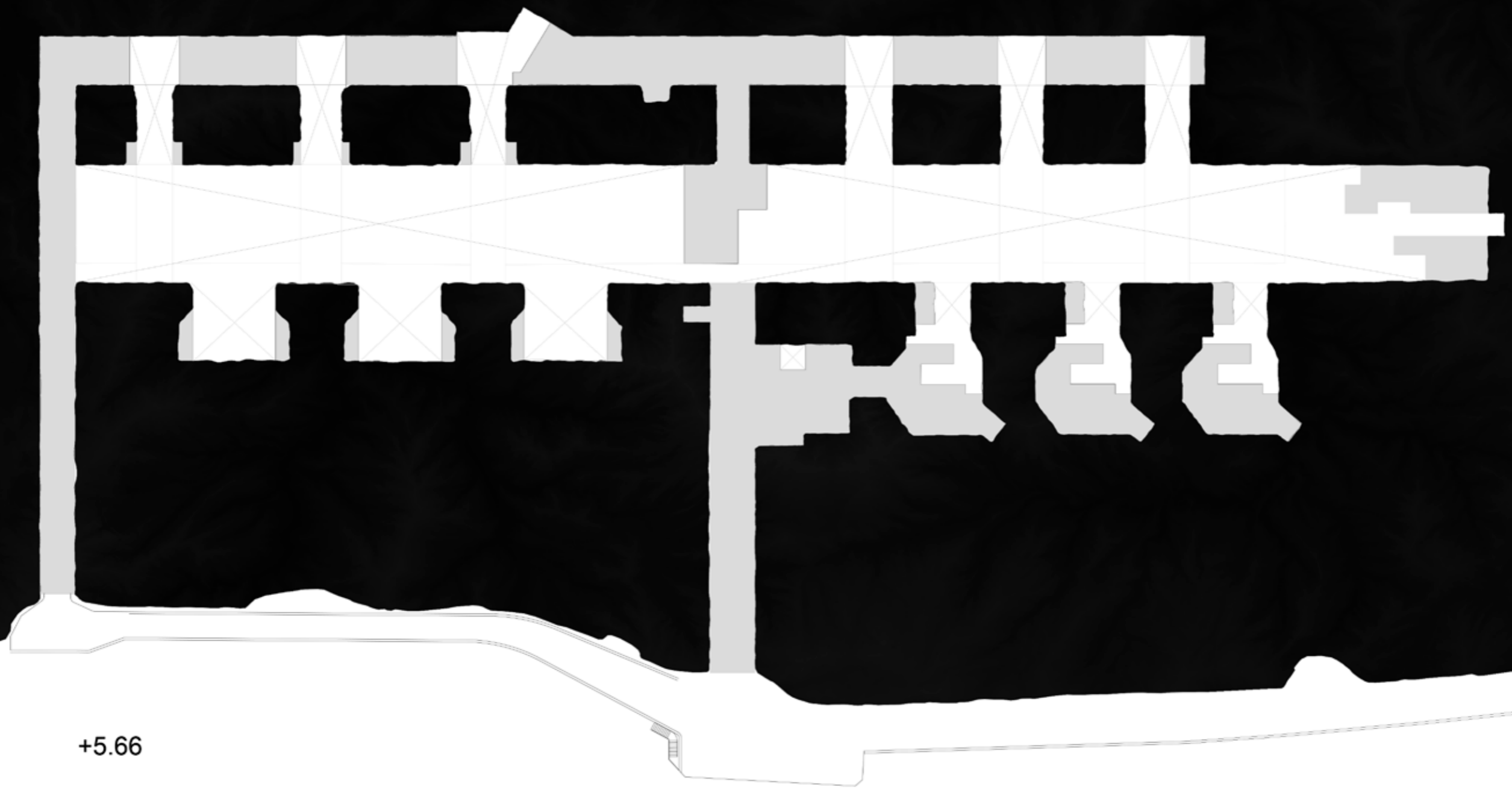


Elevation

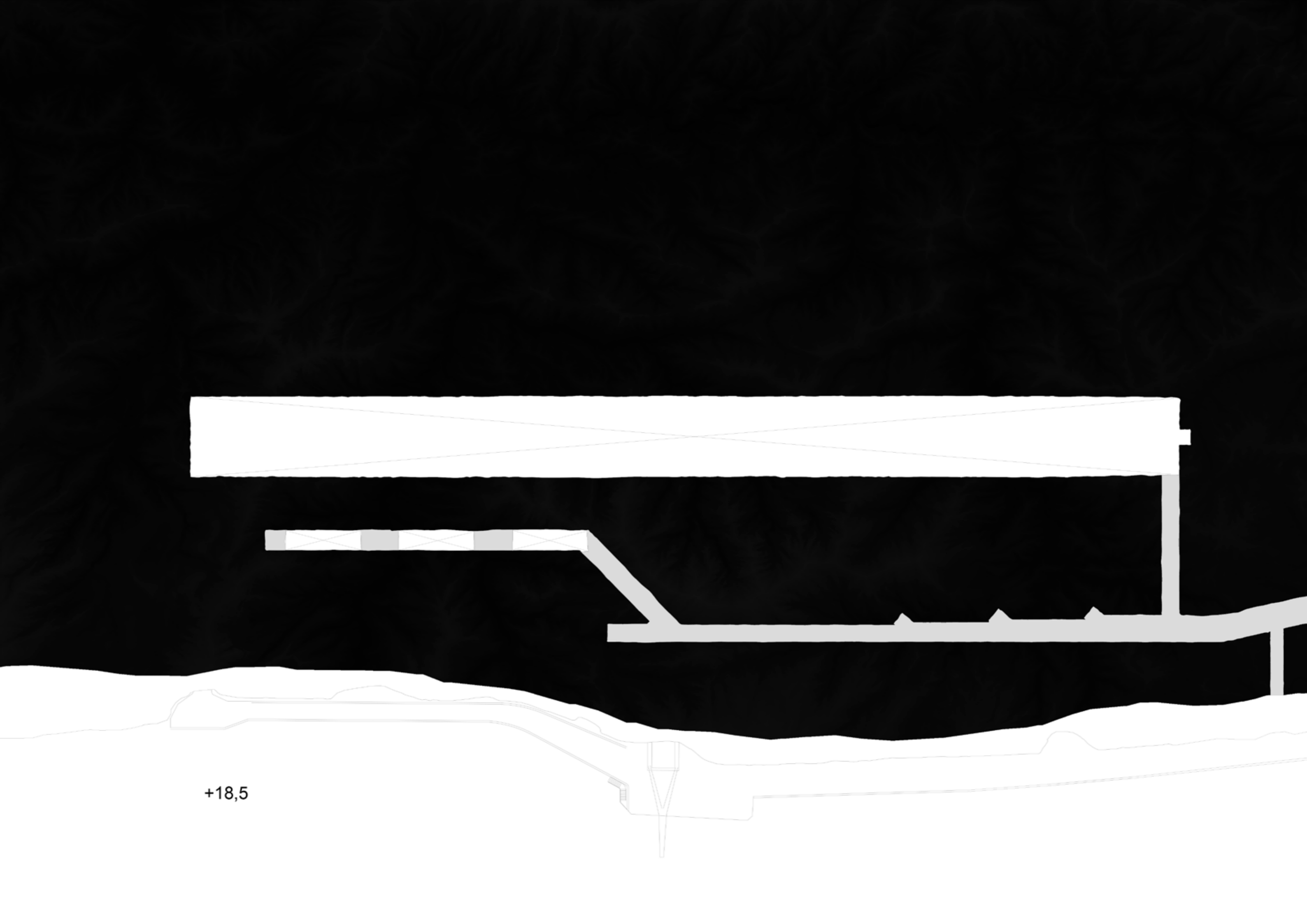




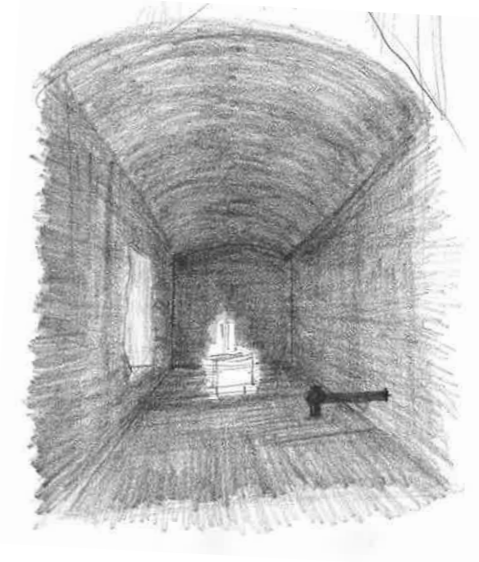
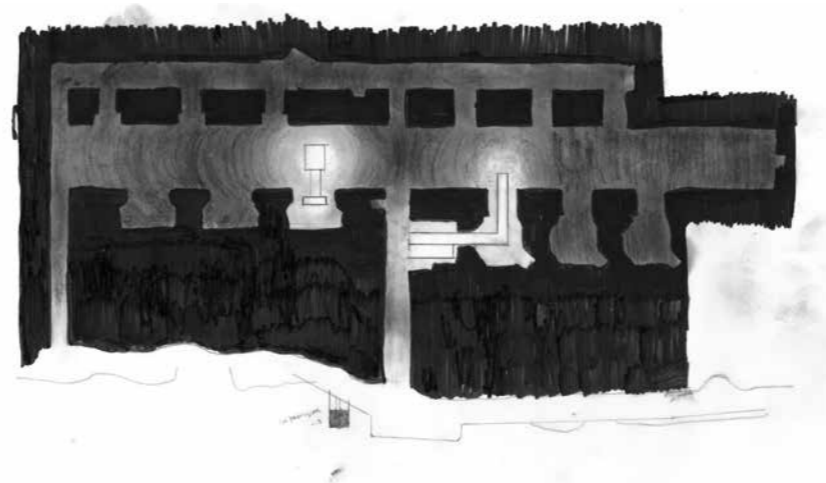
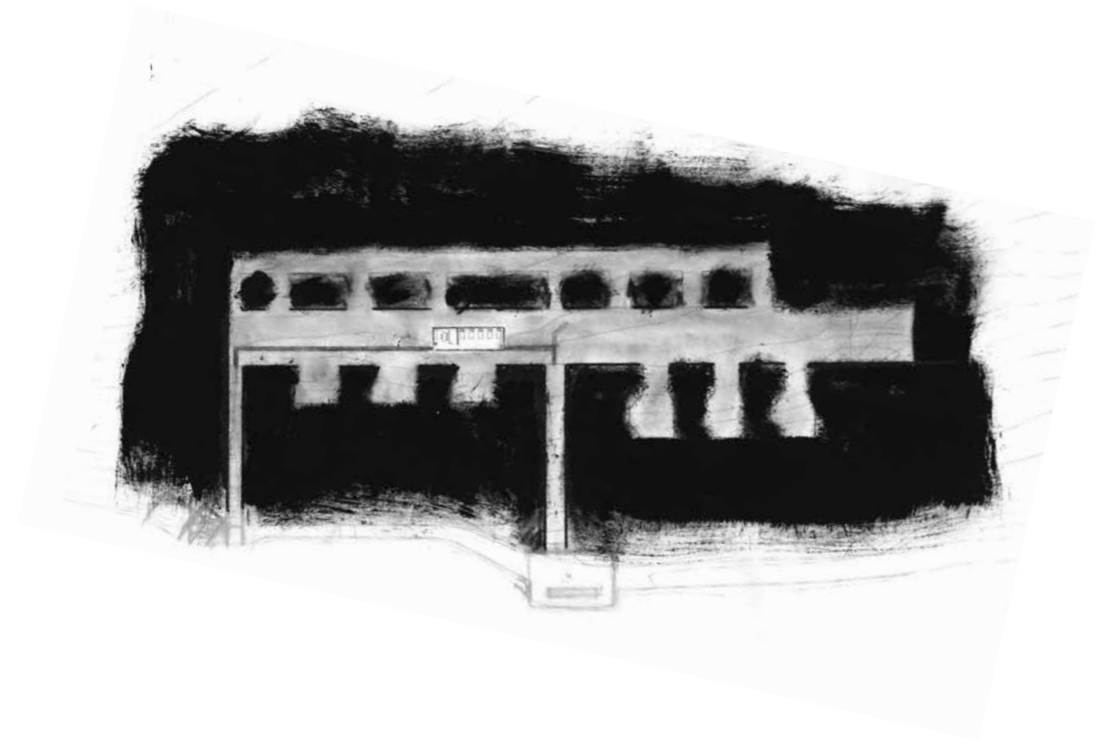
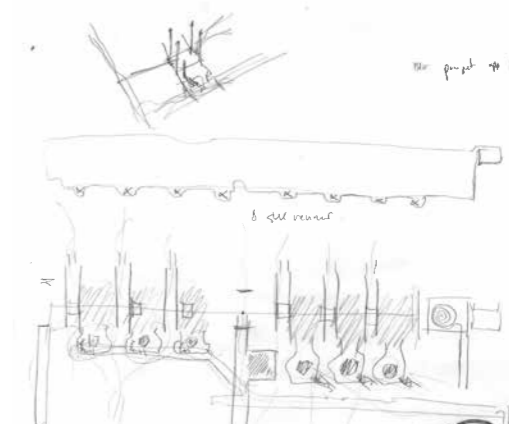
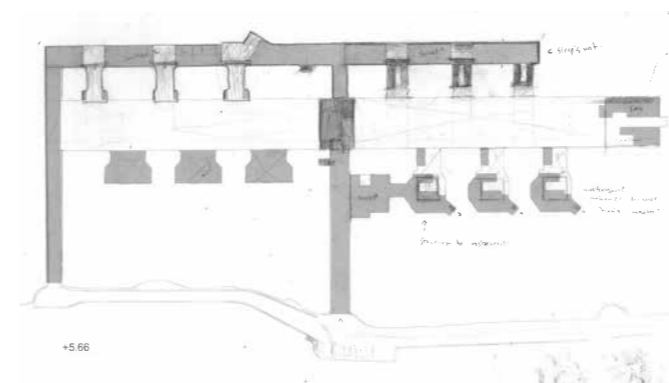
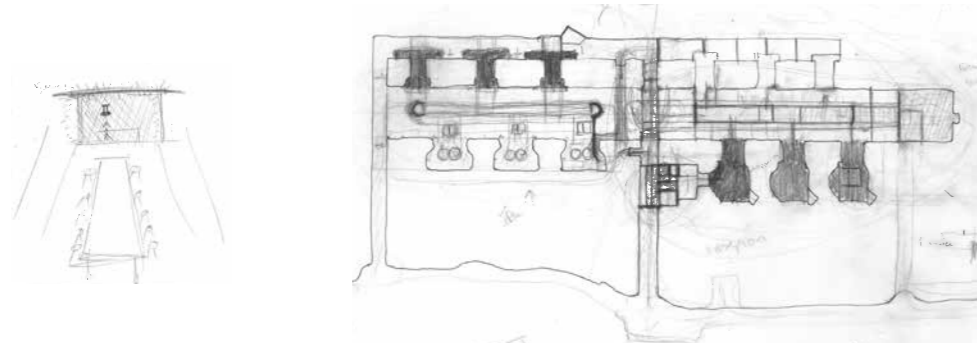




+5.66

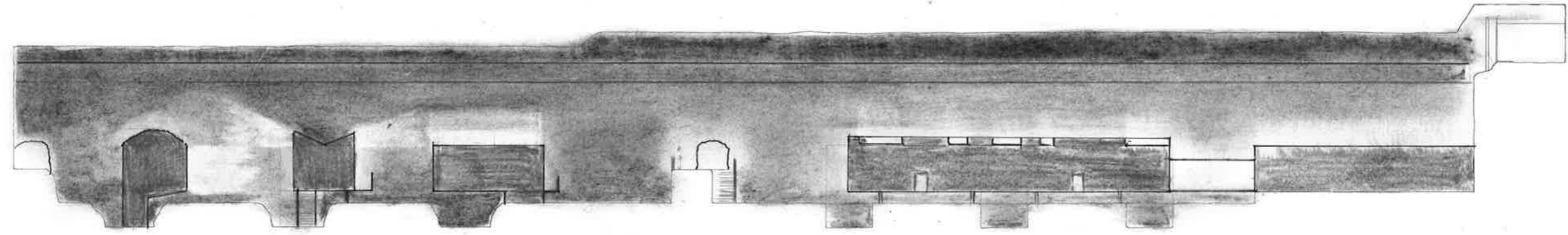
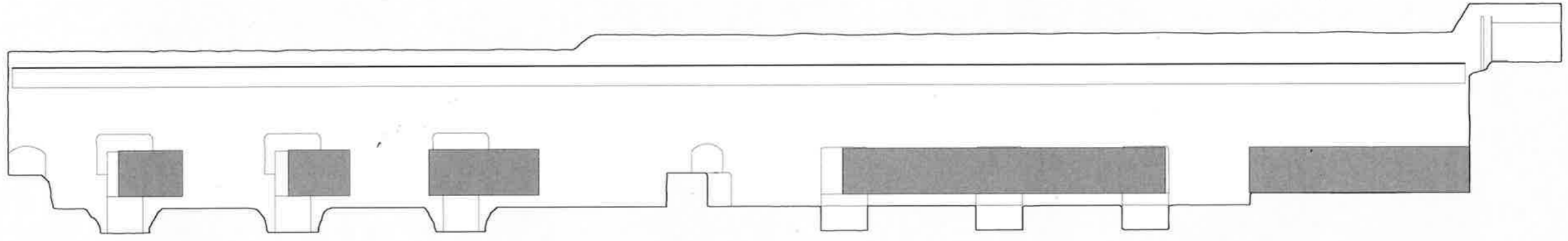


+18,5



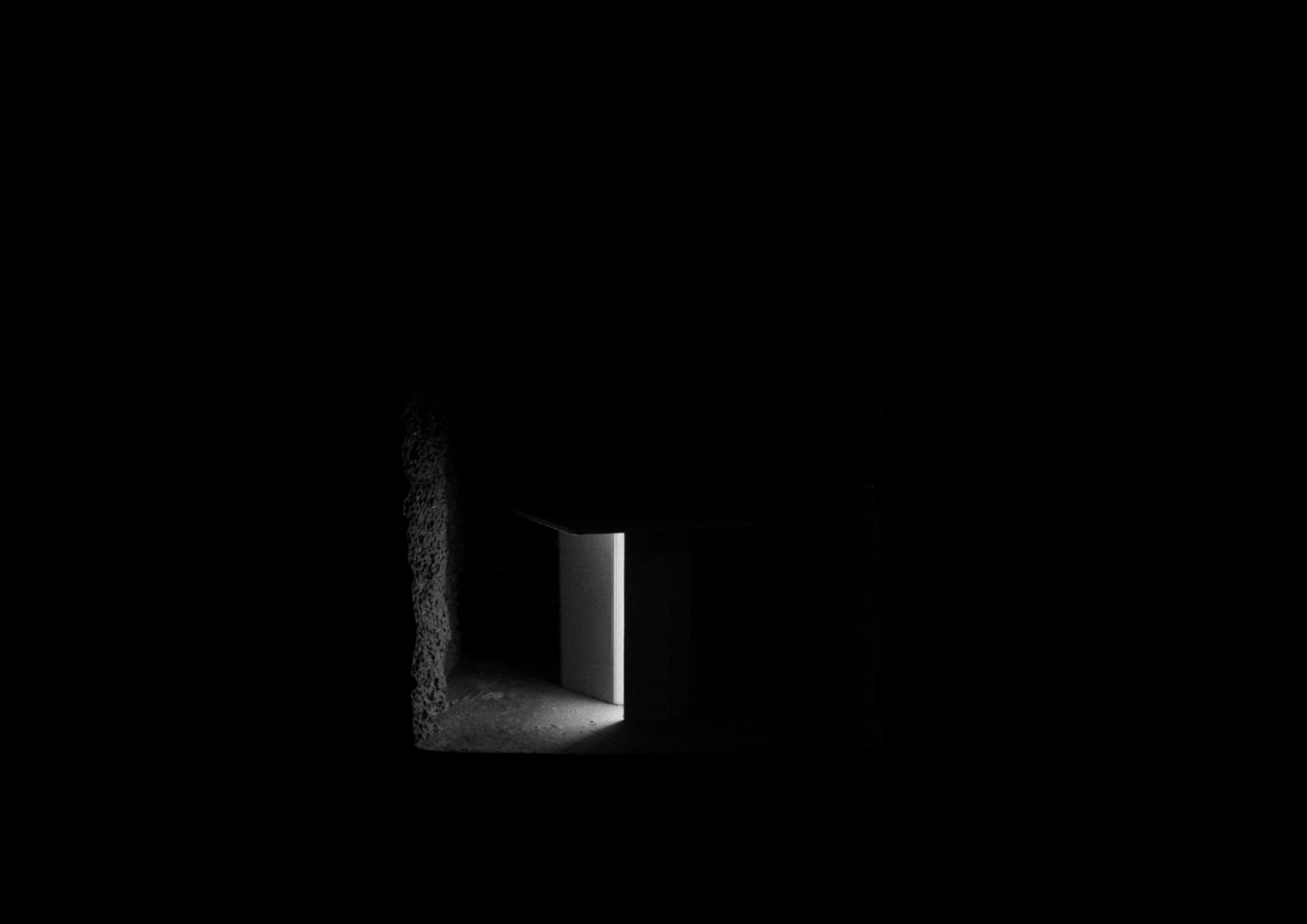
Adding new program

+ 3.00
+ 5.65
+ 7.00
-0.5

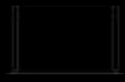


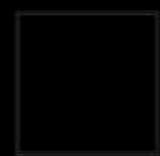
Imagine yourself being in a completely dark space. A space with walls so thick that it is impossible for the sun to infiltrate the heavy and foglike darkness. You cannot see the end of it and you cannot recognize the size of it. If you took your hand on the wall you would feel a cold and uneven surface, just like the one you are standing on. Sometimes the sound of dripping water echoes around you and slowly disappears. The attempt to stretch out your arms above you fails and the height of the room remains a mystery.

You could try to navigate by sliding your hand against the wall as you move, but you wouldn't know where you were going, for how long you would be walking and if the ground beneath your feet at one point would be gone.









Two overlays / walkway

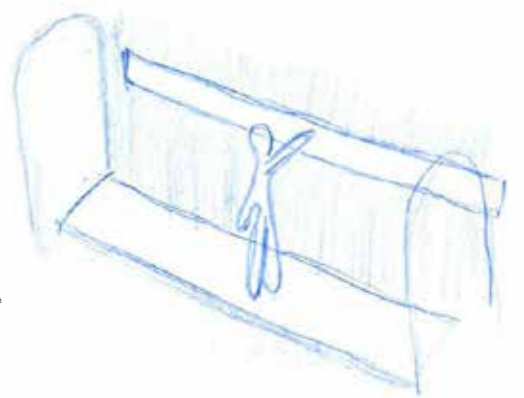
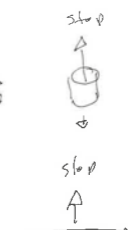
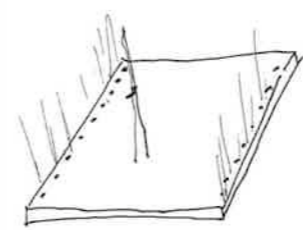
- ① - Flat concrete in dark areas where you need a steady overlay.
- In areas where you are guided around the complex.

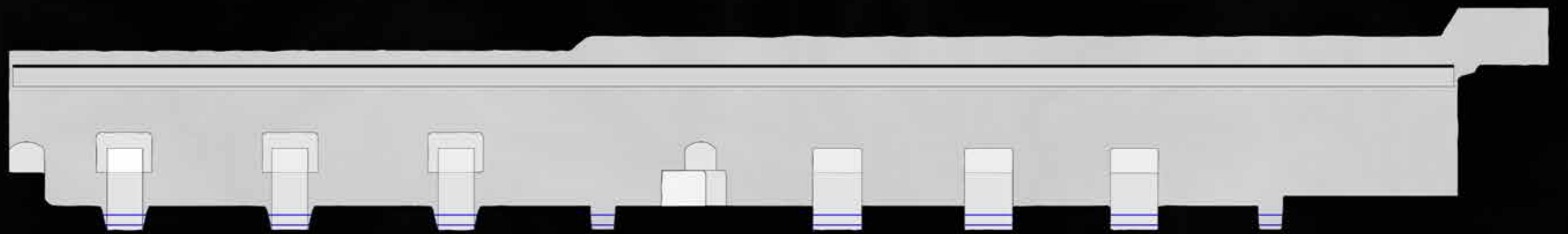
- ② Natural rock ground existing.
- used between walkway and functions.
- in areas with more light.

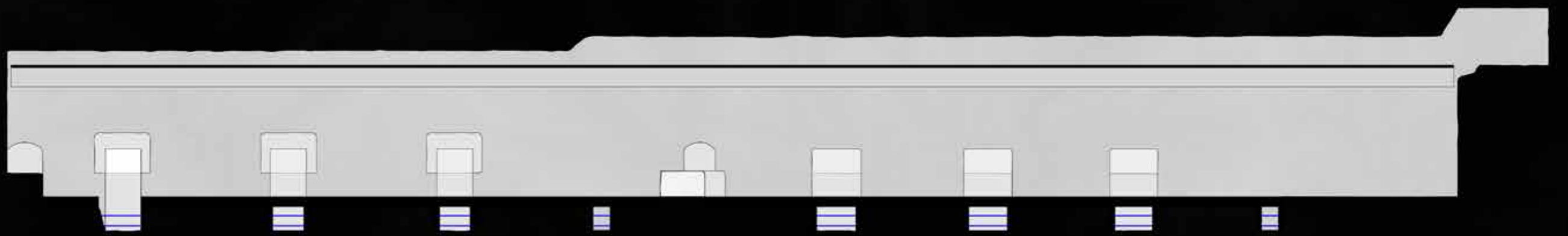
How to light?



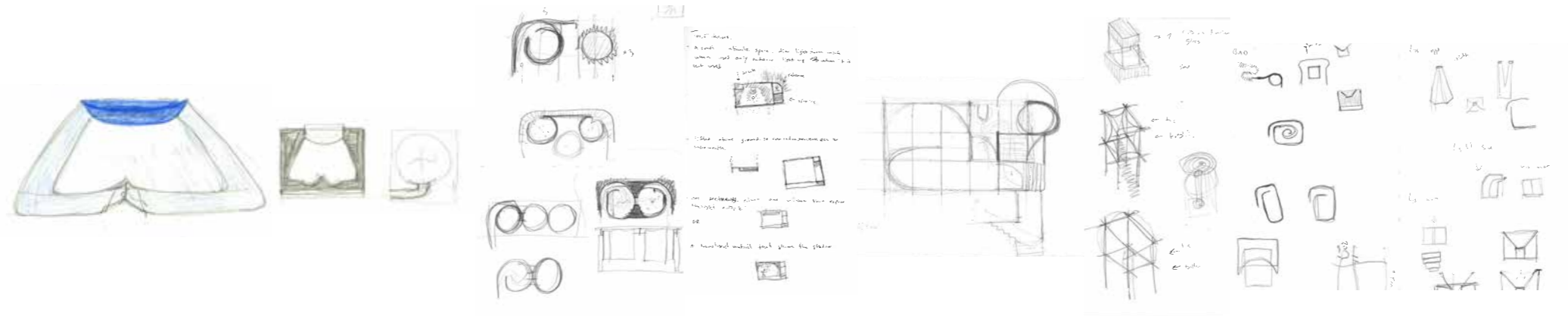
- ① side by side, unobtrusive.
- ② lower: how to frame?
- ③ folk: to be from i. n. k. n. e. d.
- ④ better: how to frame? how to use the space?
- ⑤ in the structure: as input, because the light is not the same. Re. with nature.





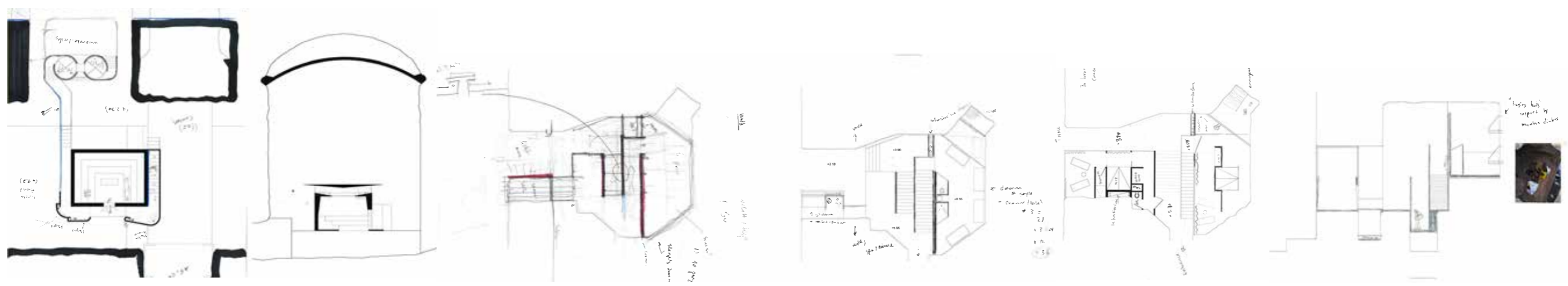
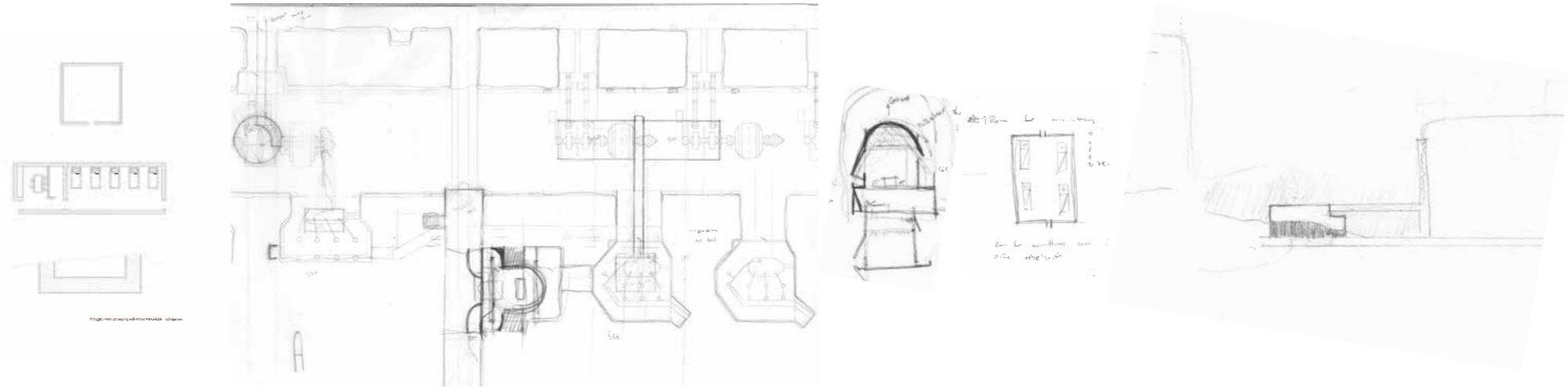


Sleep
Eat
Bath



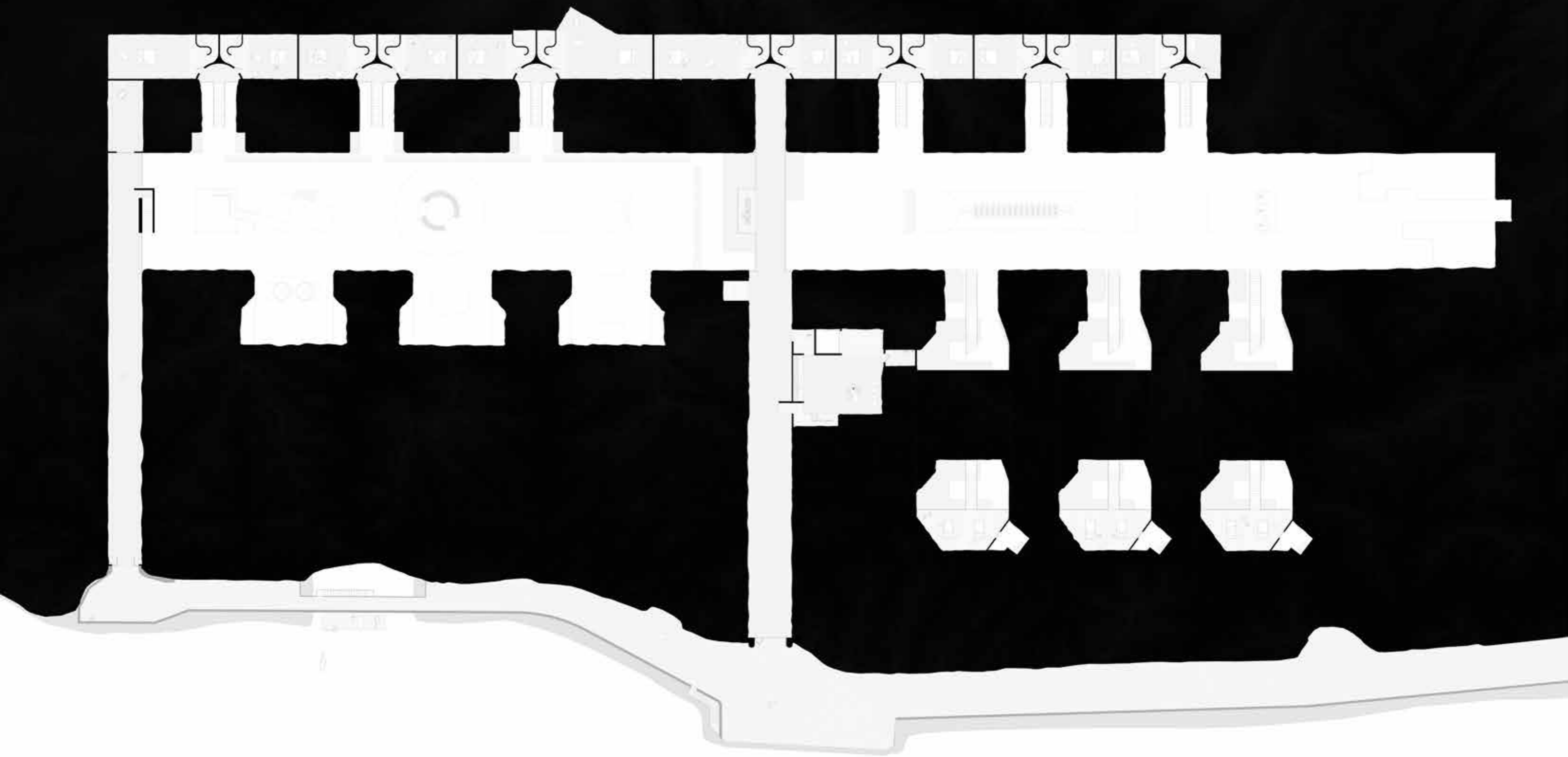
Handwritten notes:

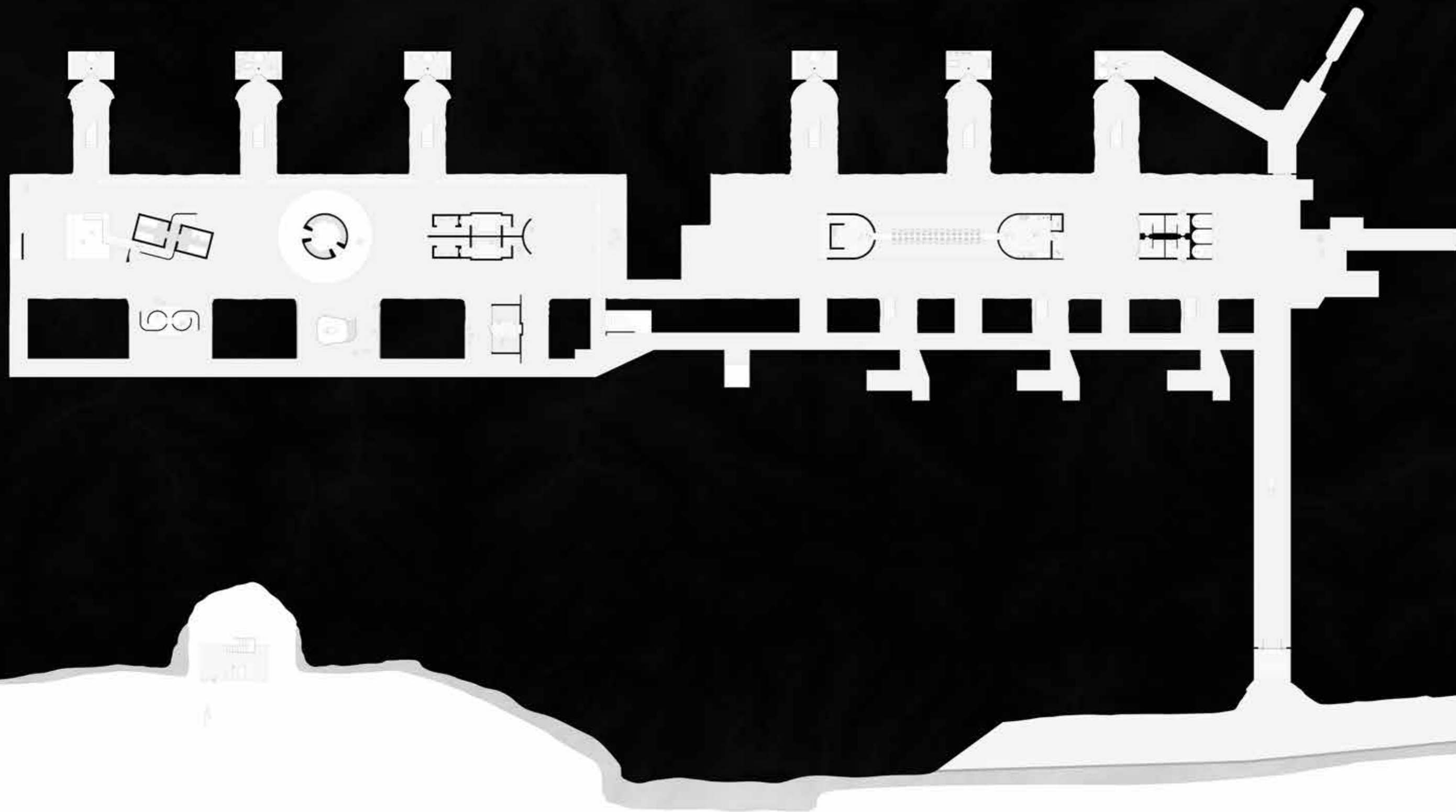
Handwritten notes in a small, dense font, likely providing context or specifications for the sketches. The text is partially illegible but appears to be organized into sections.



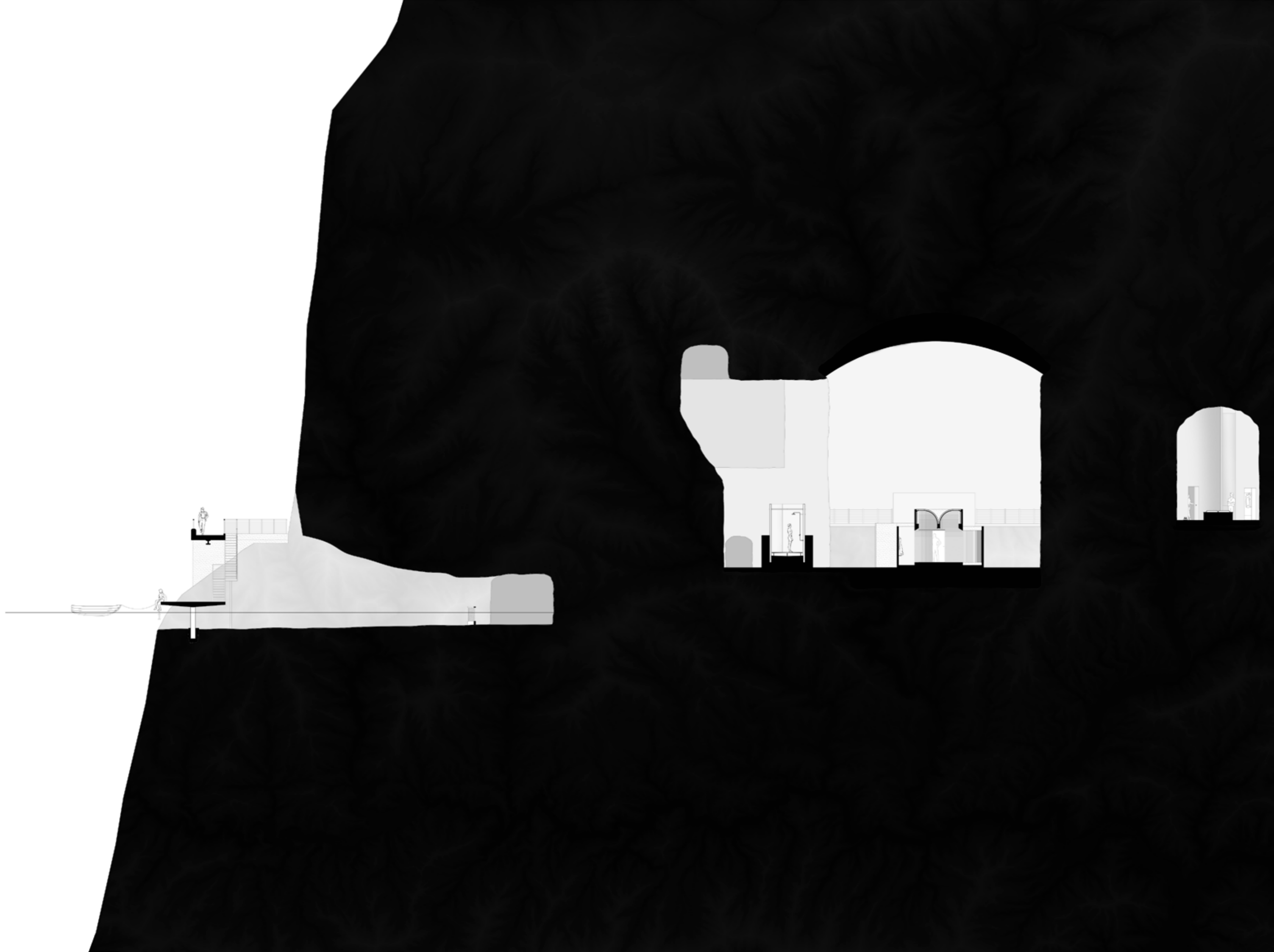


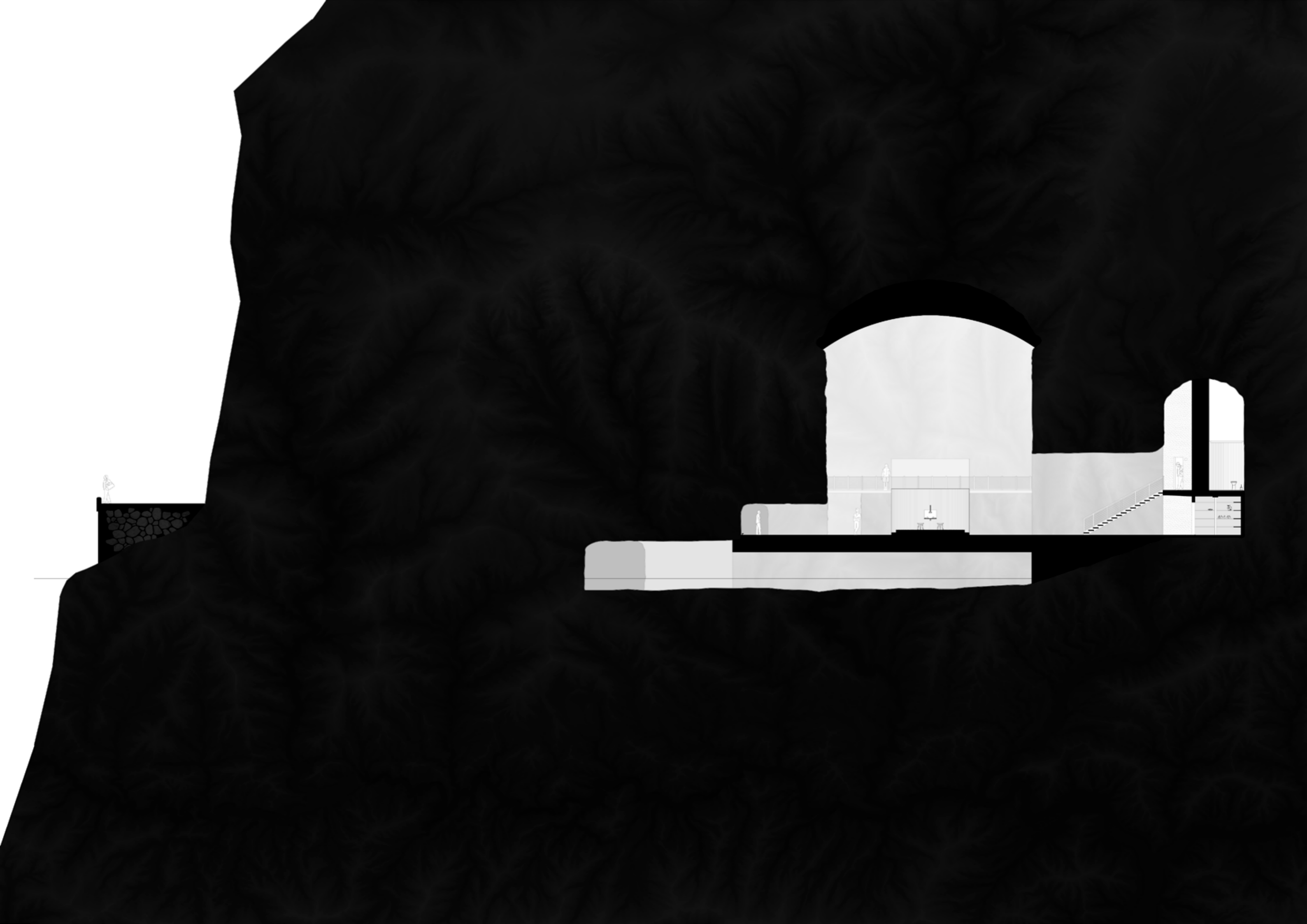






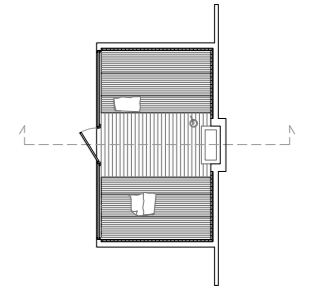
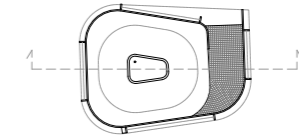
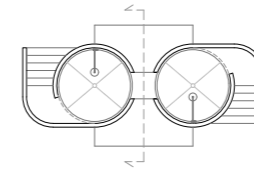
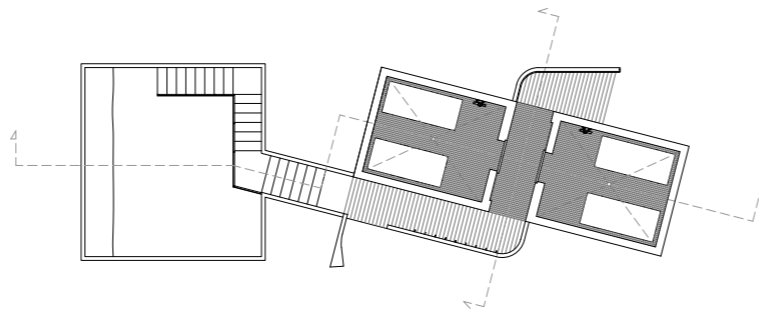
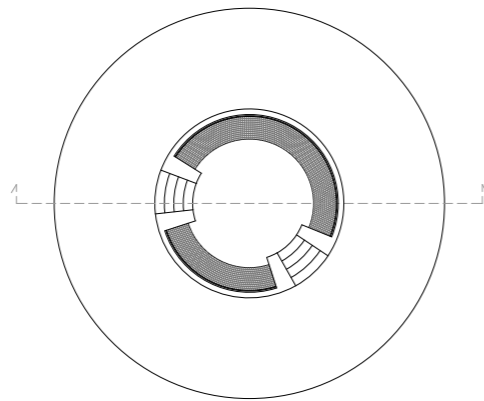
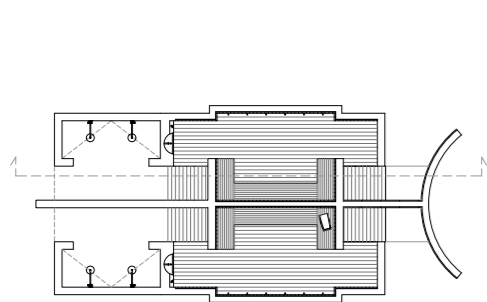
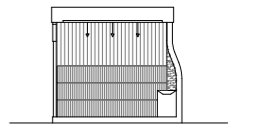
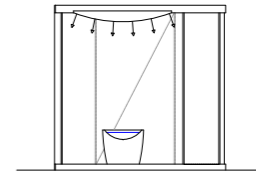
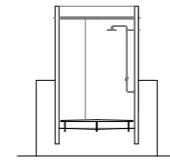
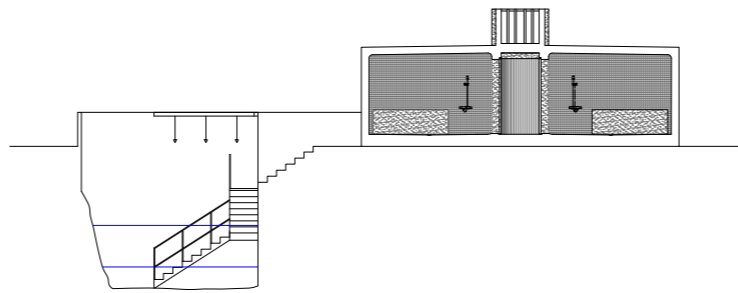
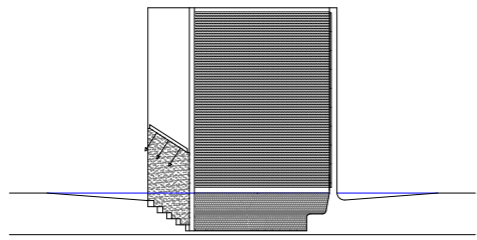
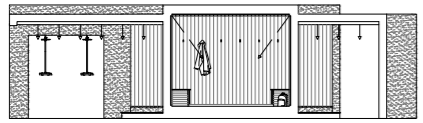




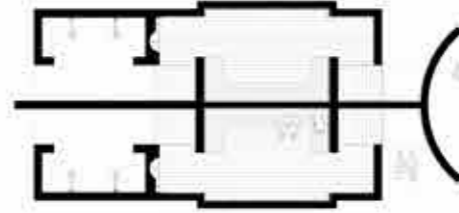
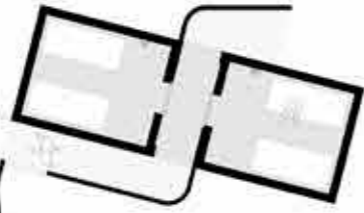


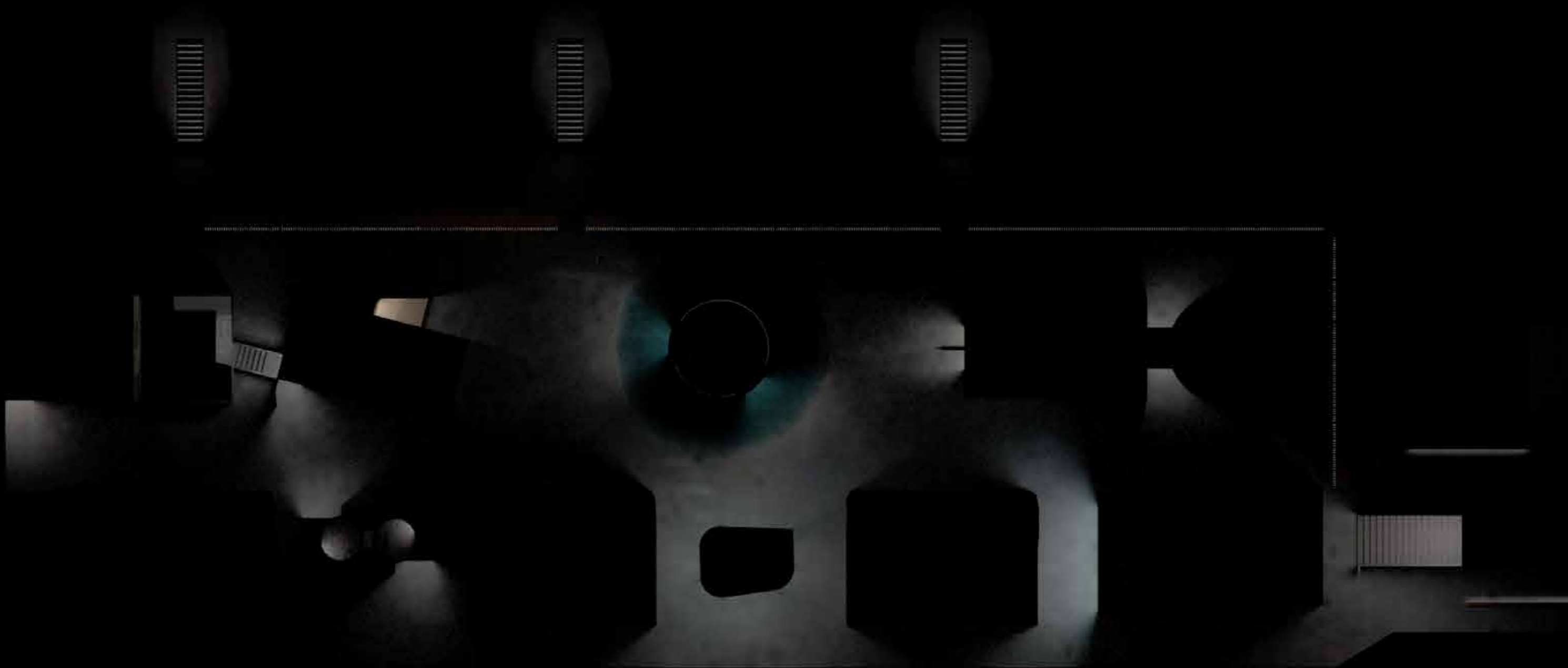




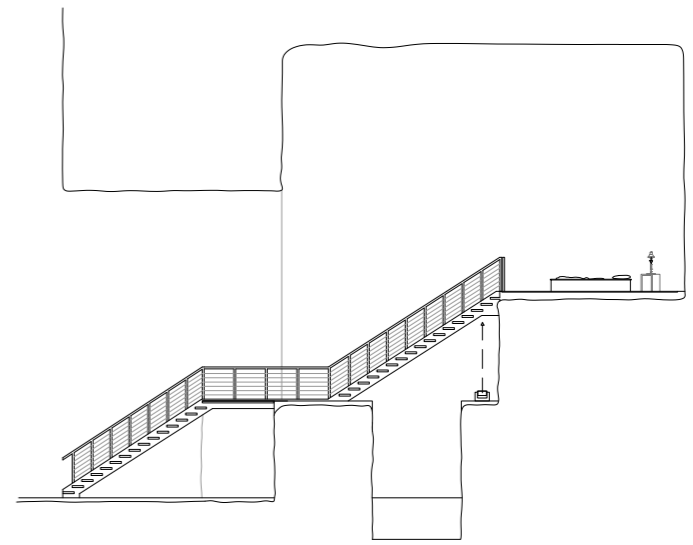
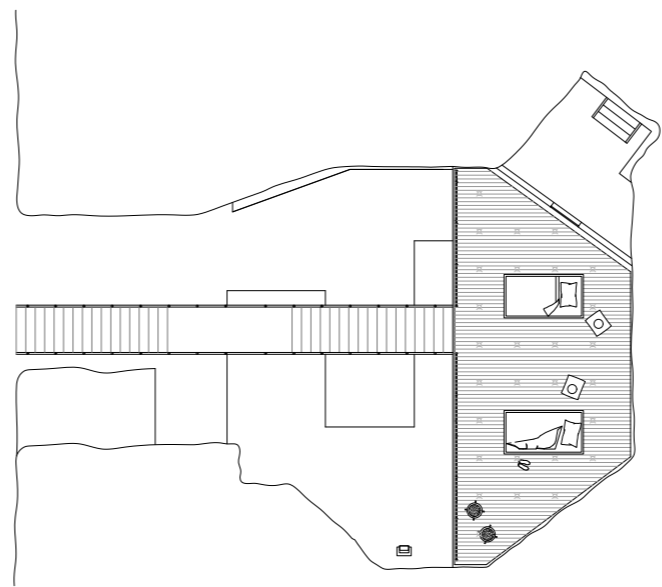
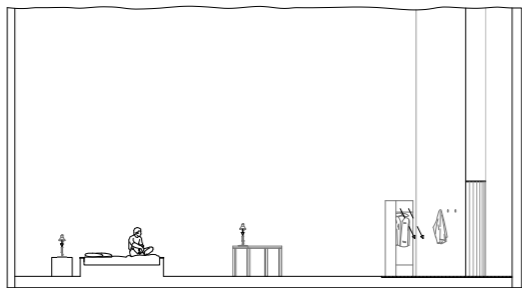
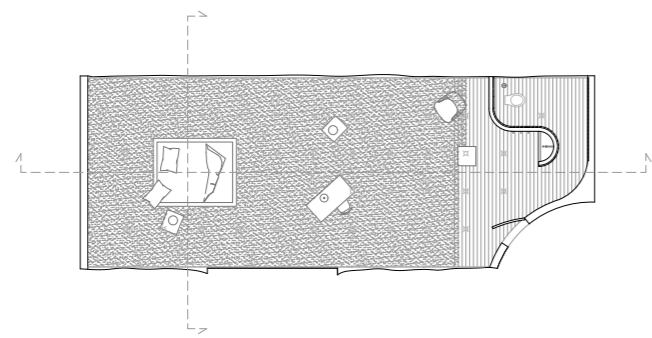


Bath









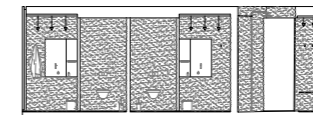
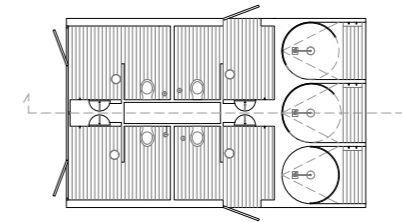
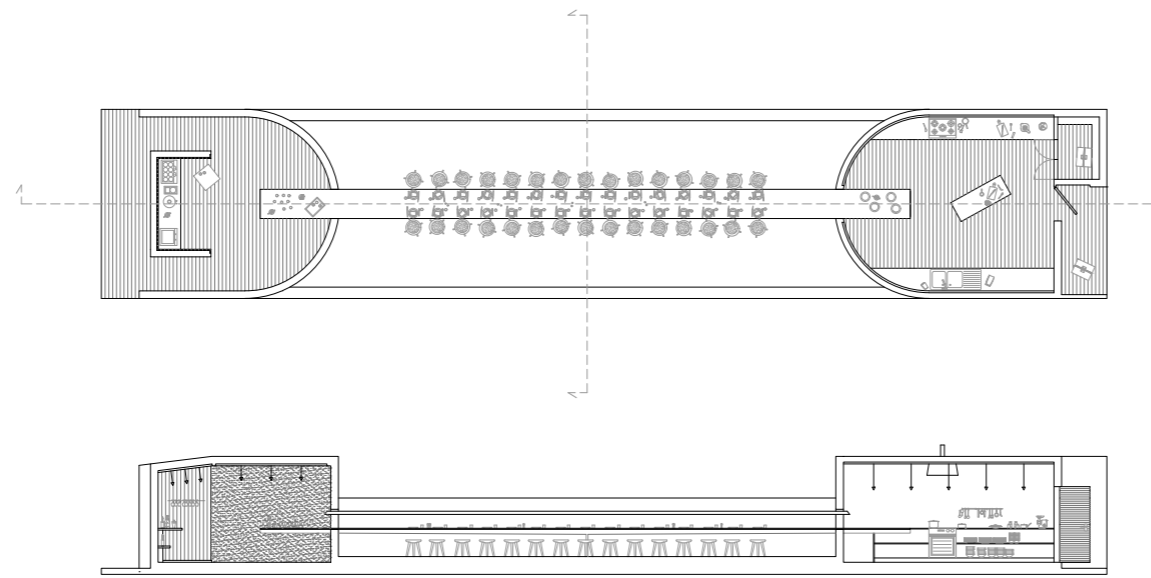
Sleeping



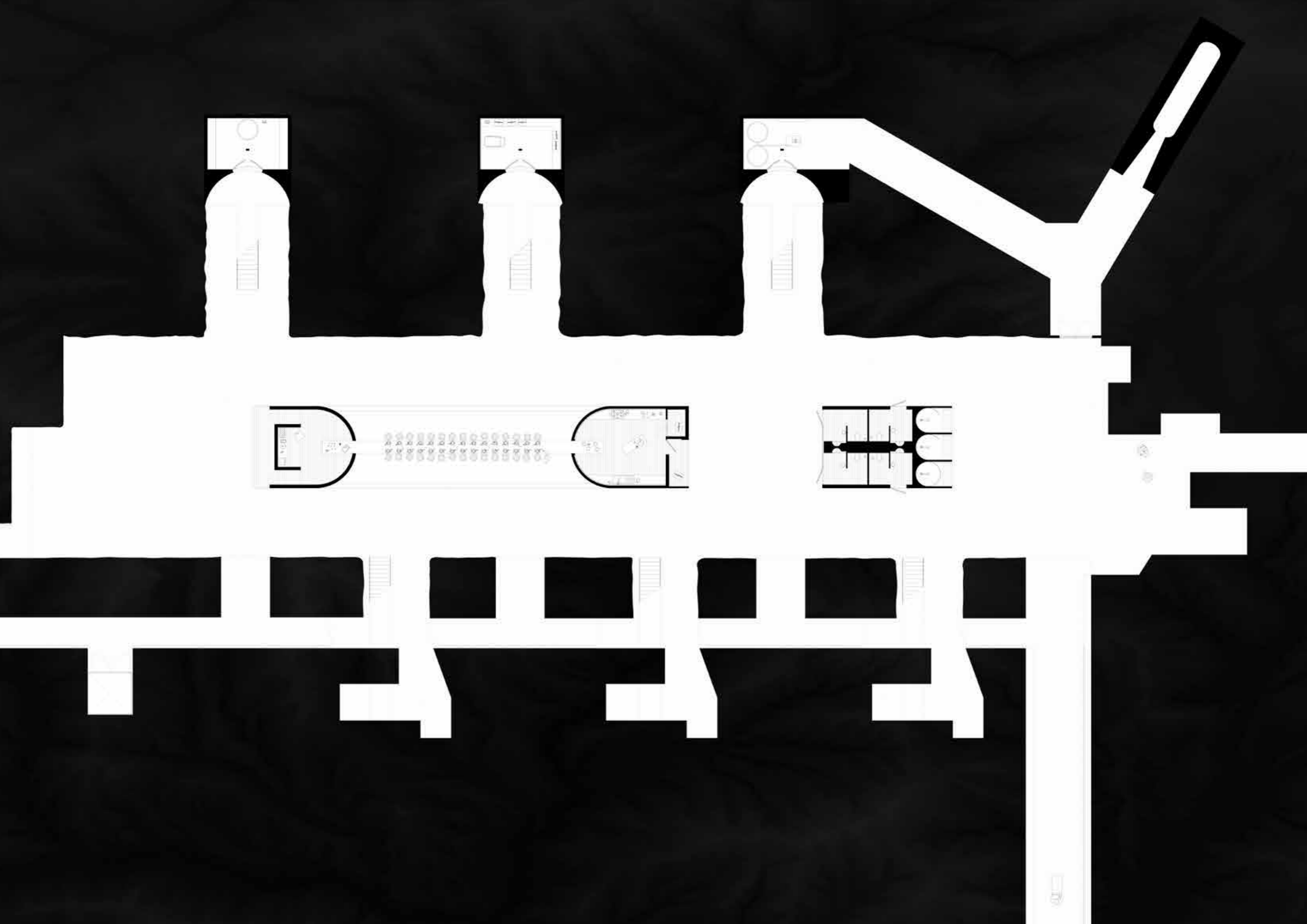


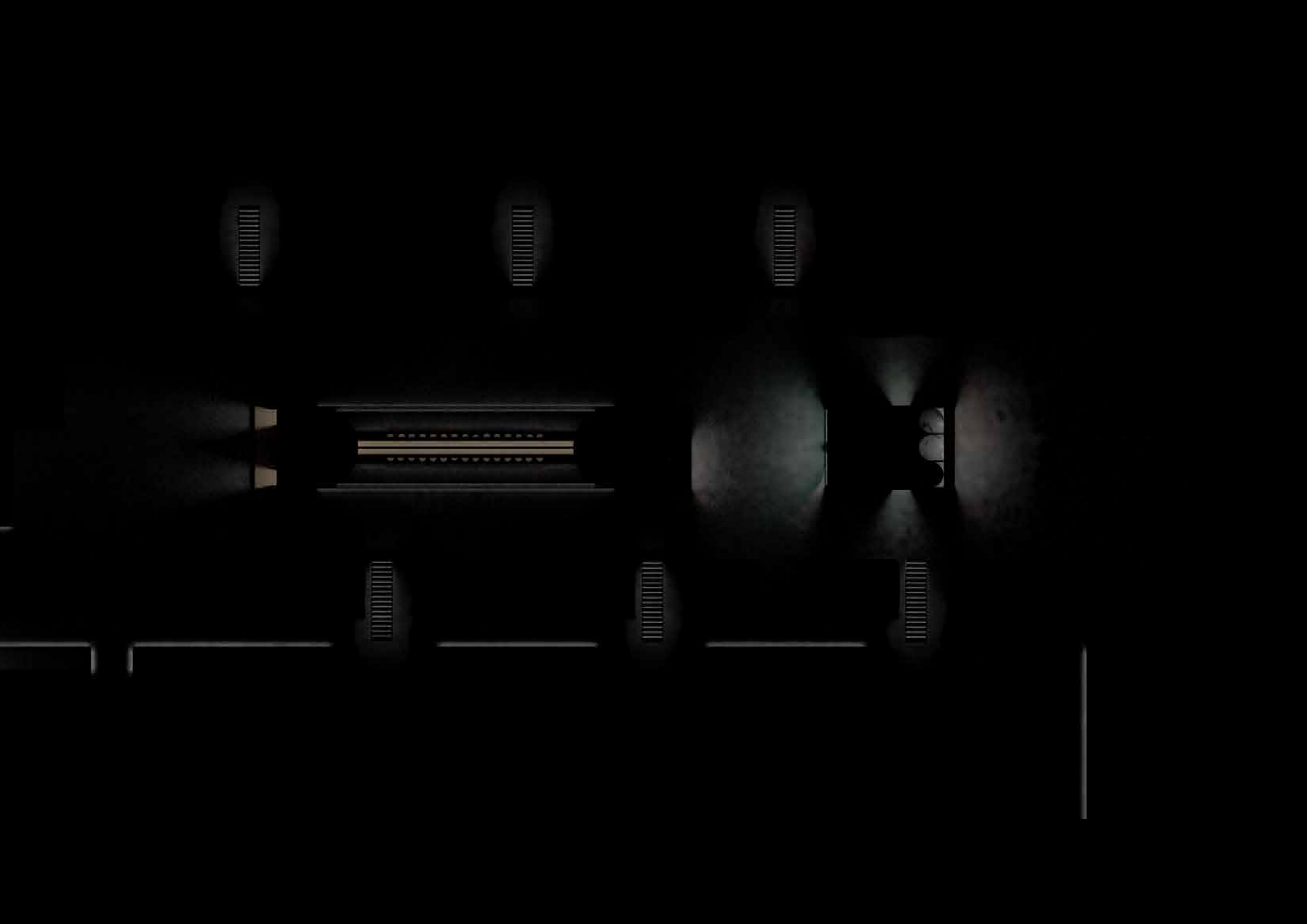






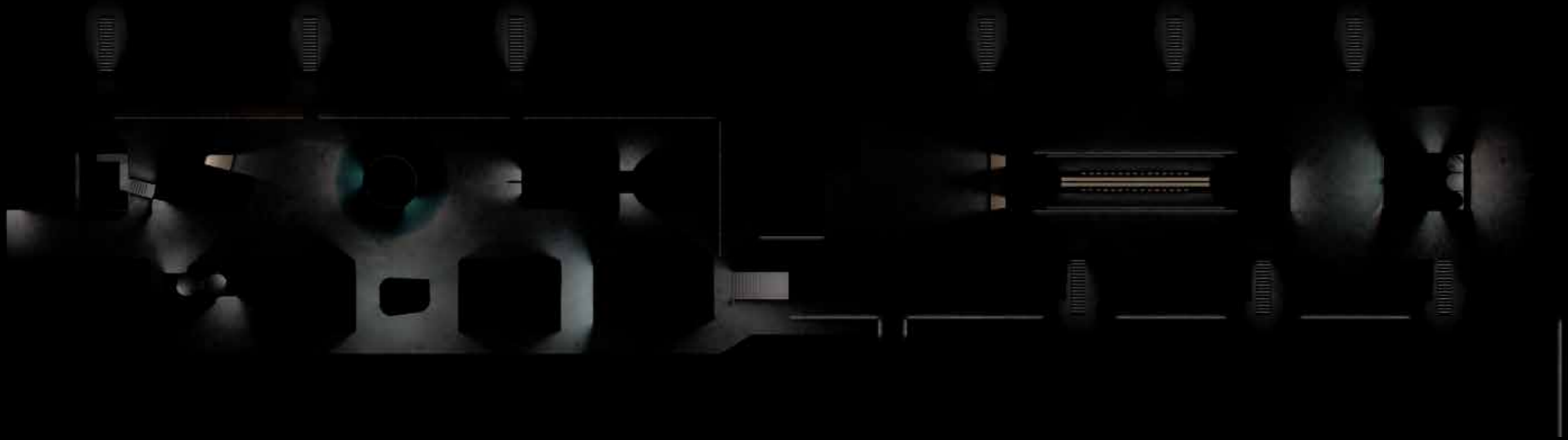
Eat

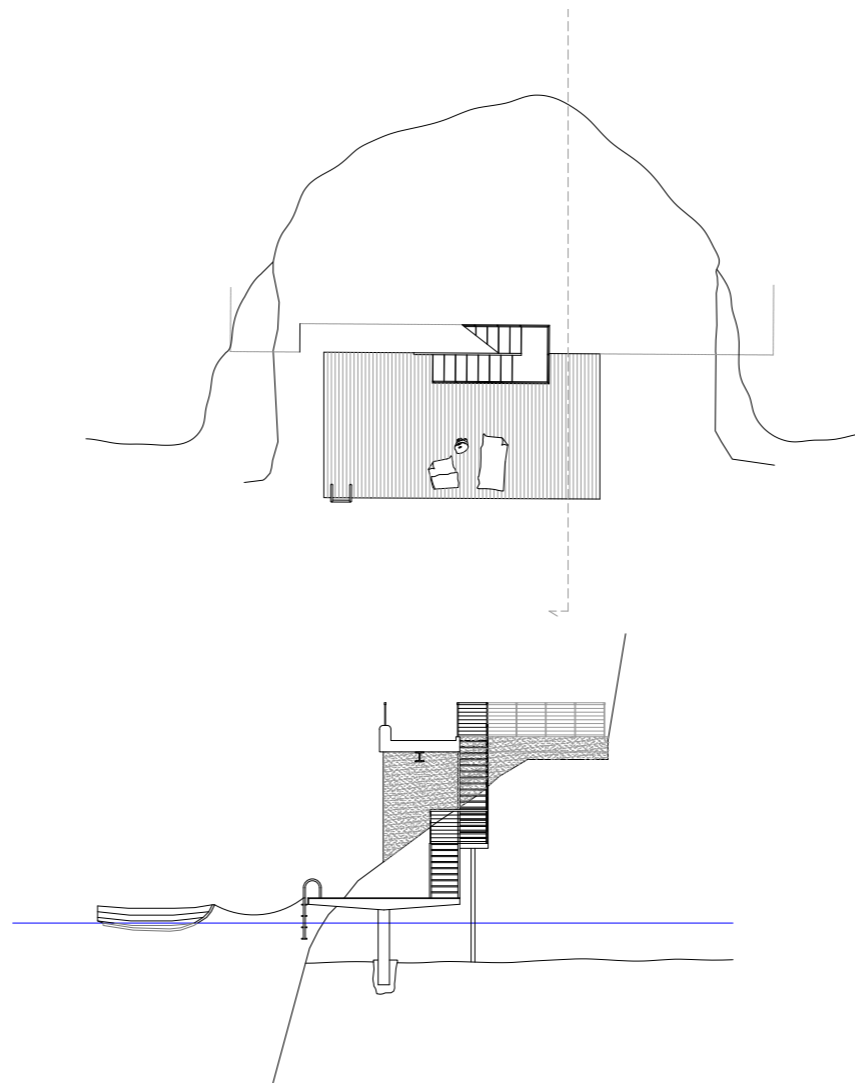












Fjord

