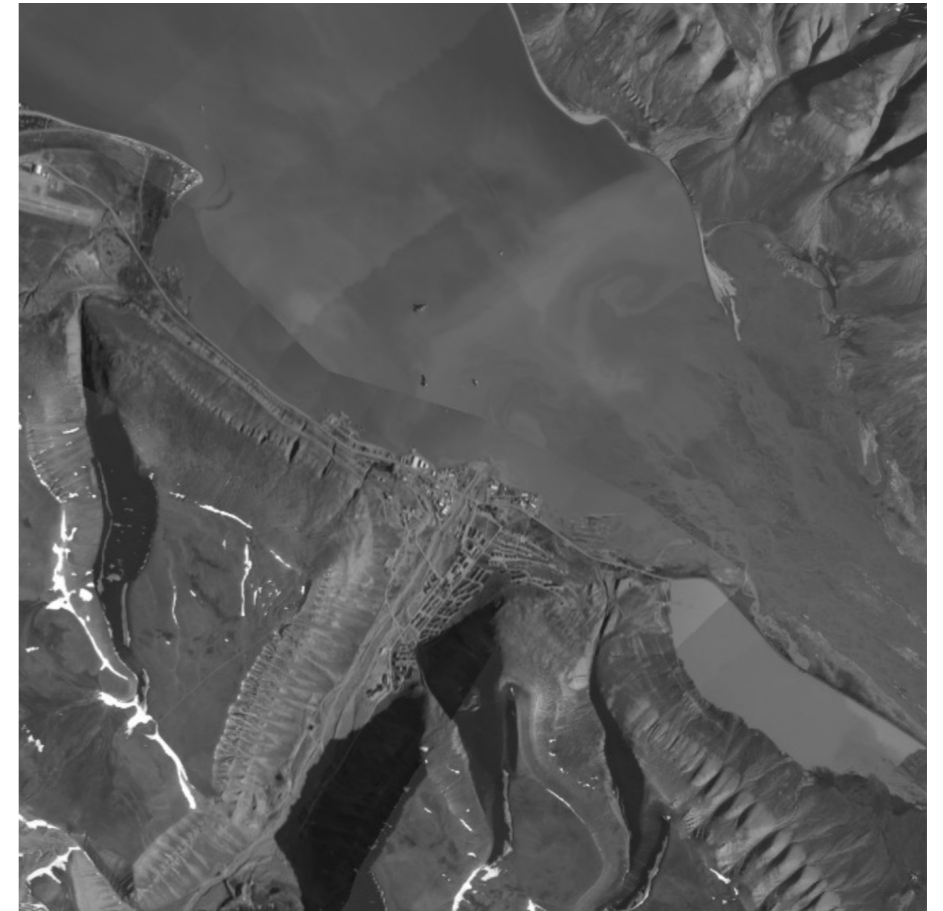
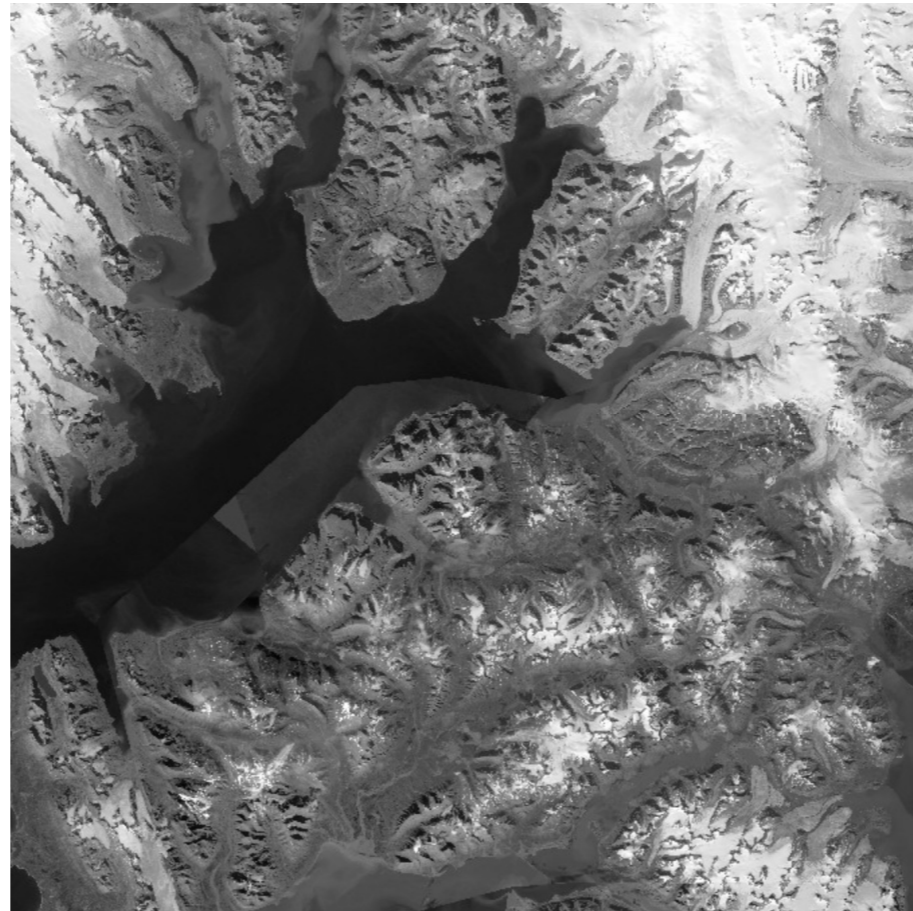
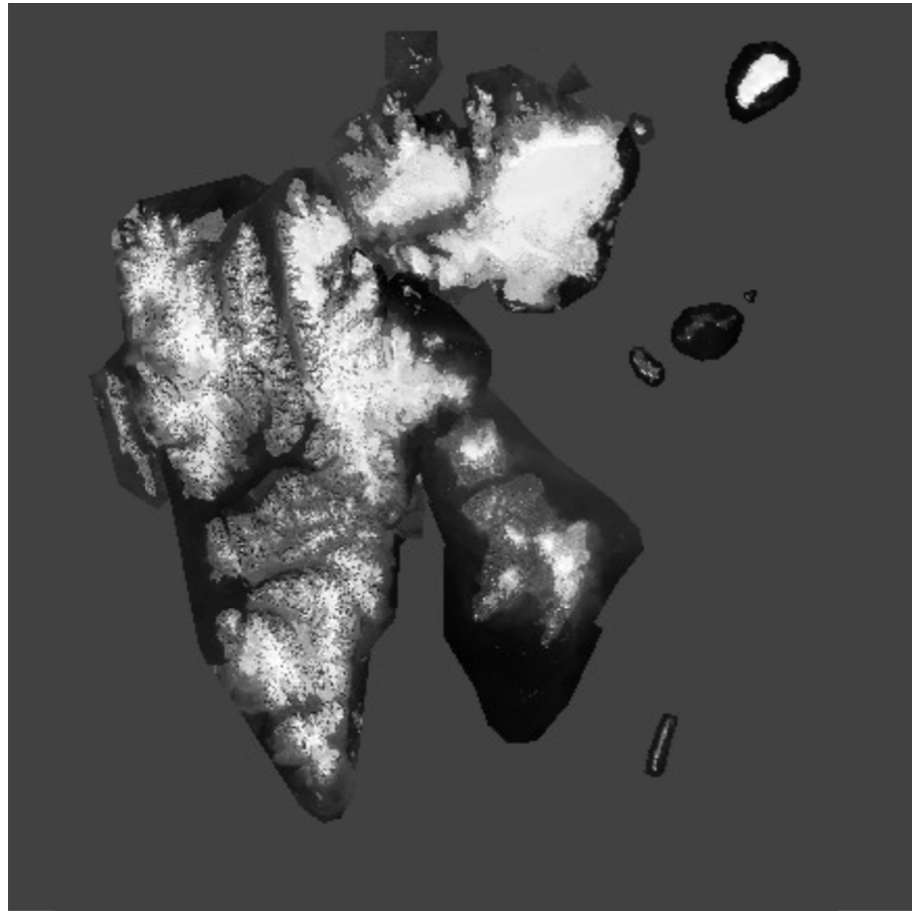


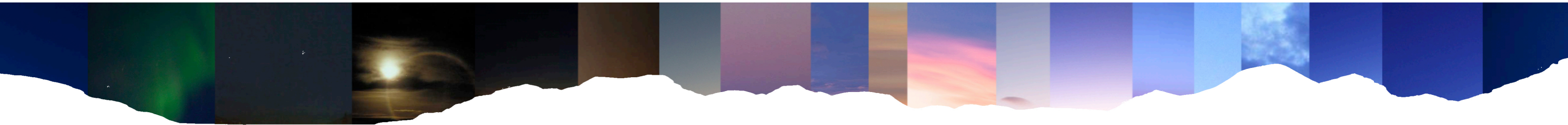
SJØSKRENTEN BATH
- a public bath in Longyearbyen







THE SITE 360°

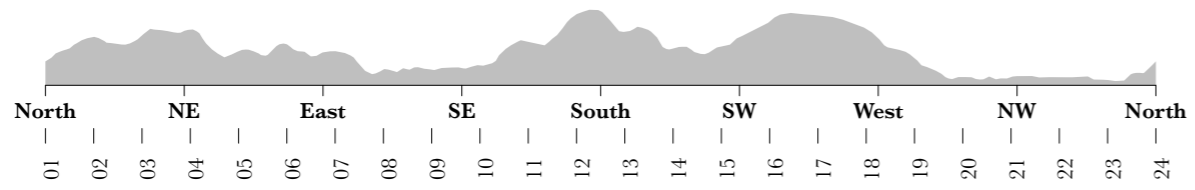


COLORS OF THE POLAR NIGHT
Light conditions - end of February

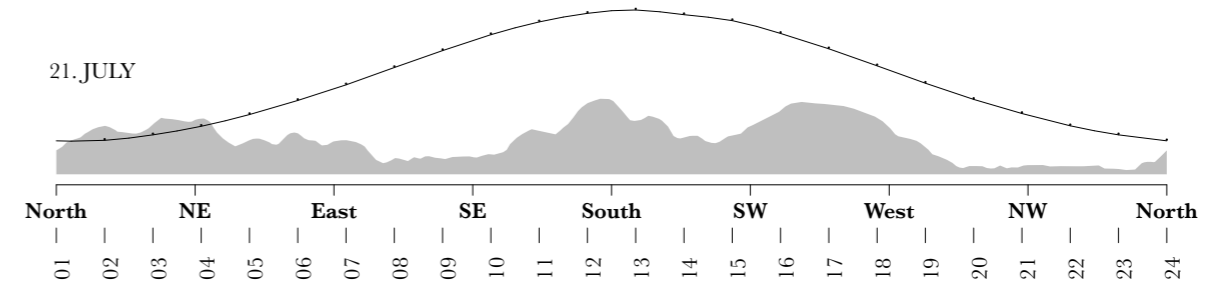


COLORS OF THE POLAR NIGHT
Light conditions - mid August

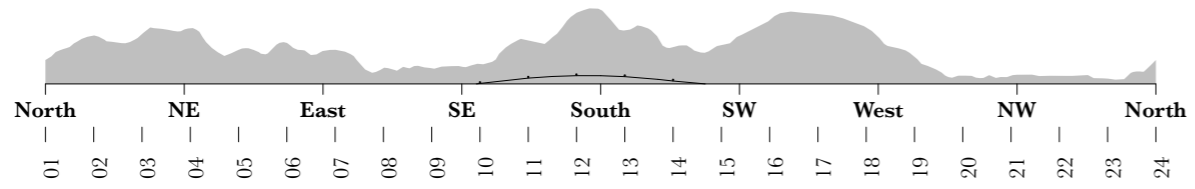
21. JANUARY



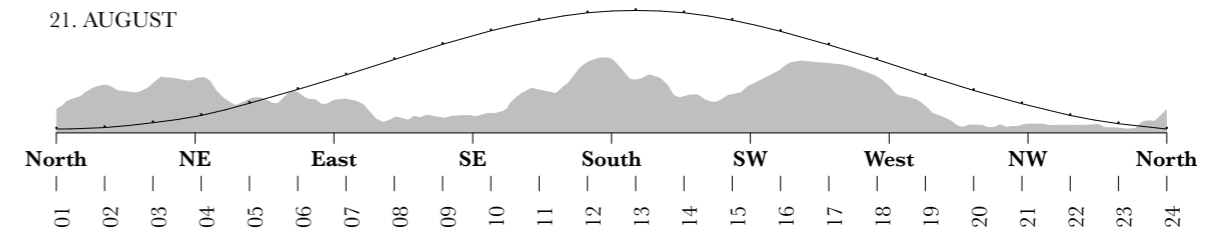
21. JULY



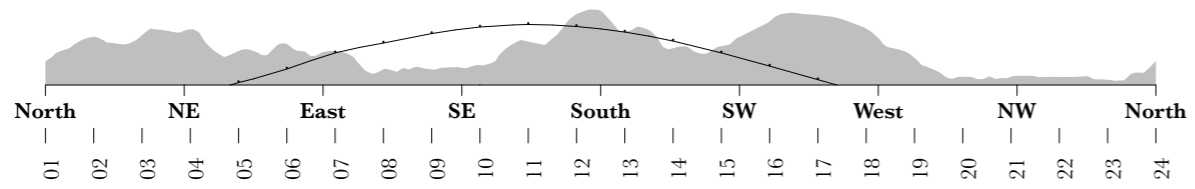
21. FEBRUARY



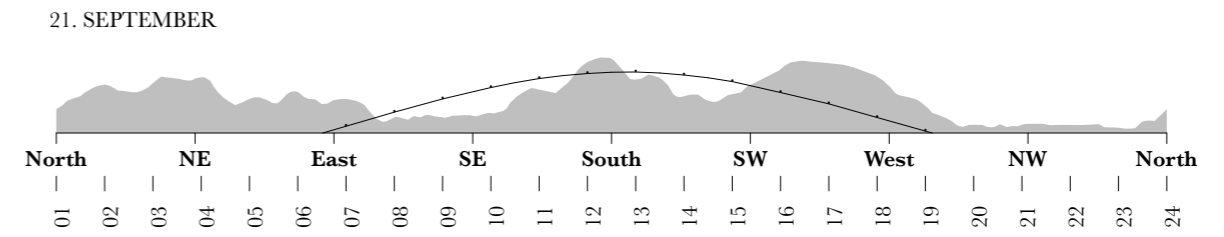
21. AUGUST



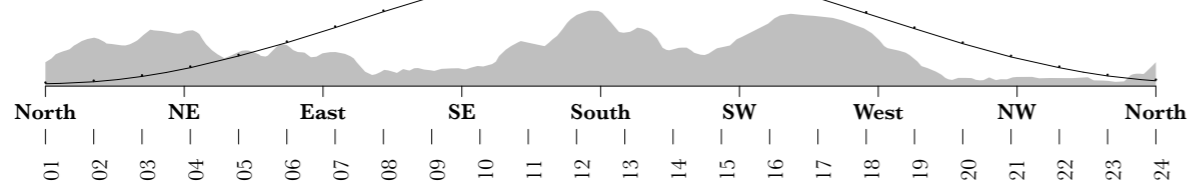
21. MARCH



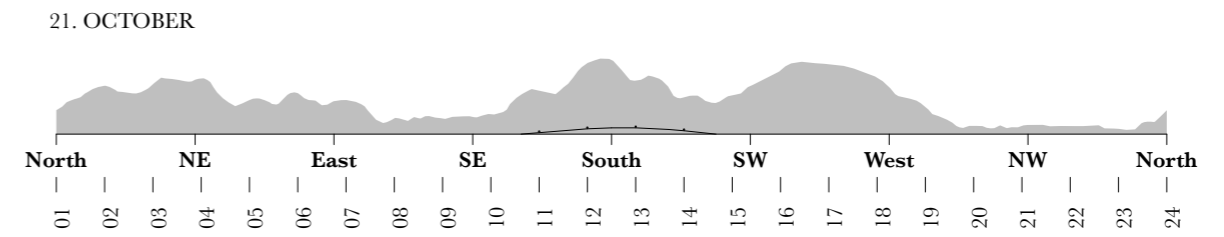
21. SEPTEMBER



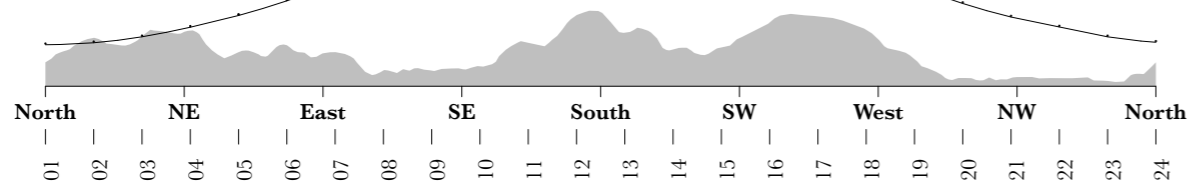
21. APRIL



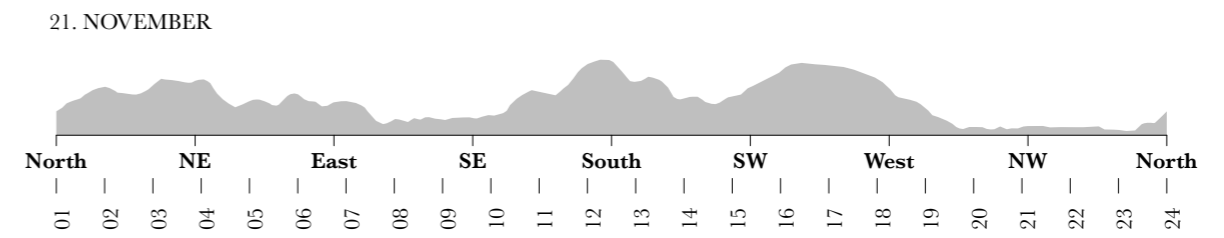
21. OCTOBER



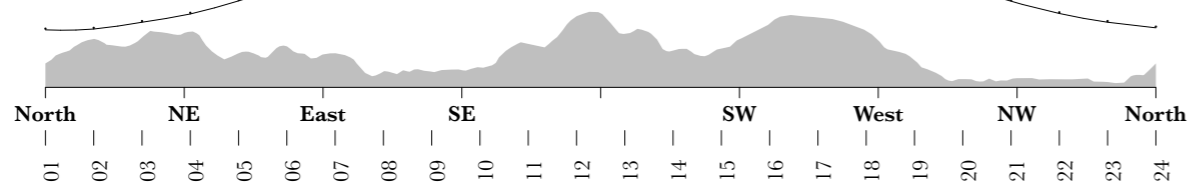
21. MAY



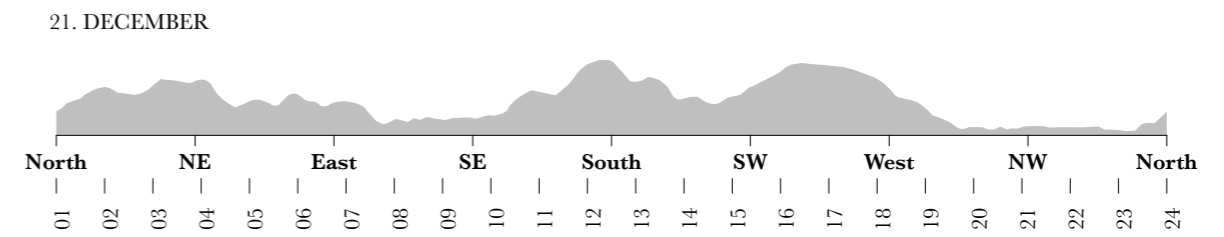
21. NOVEMBER



21. JUNE



21. DECEMBER







SITUATIONPLAN



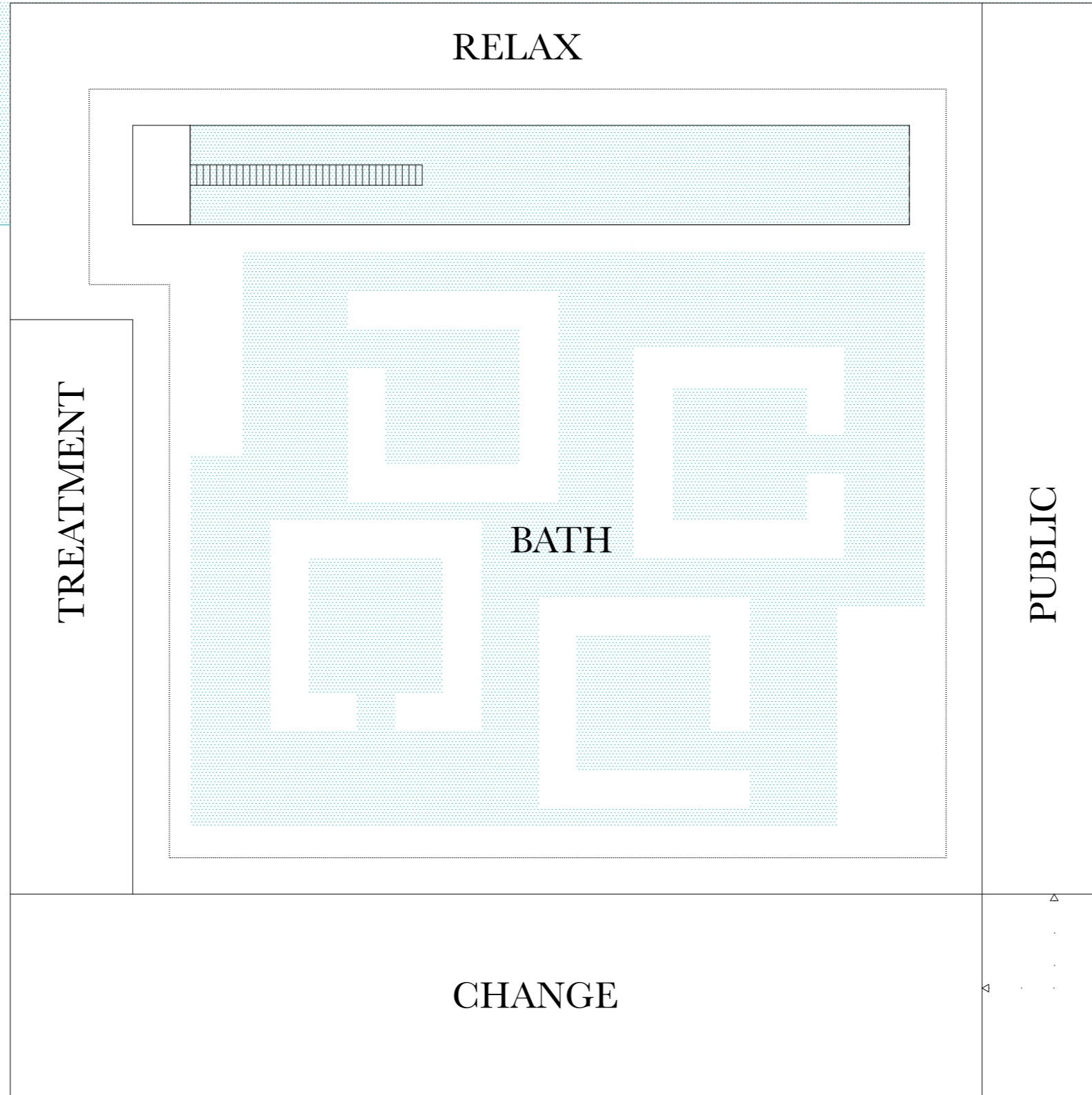


ORGANIZATION AND ORIENTATION

view to the mountain across the fjord

midnight sun and view out to the sea through the fjord

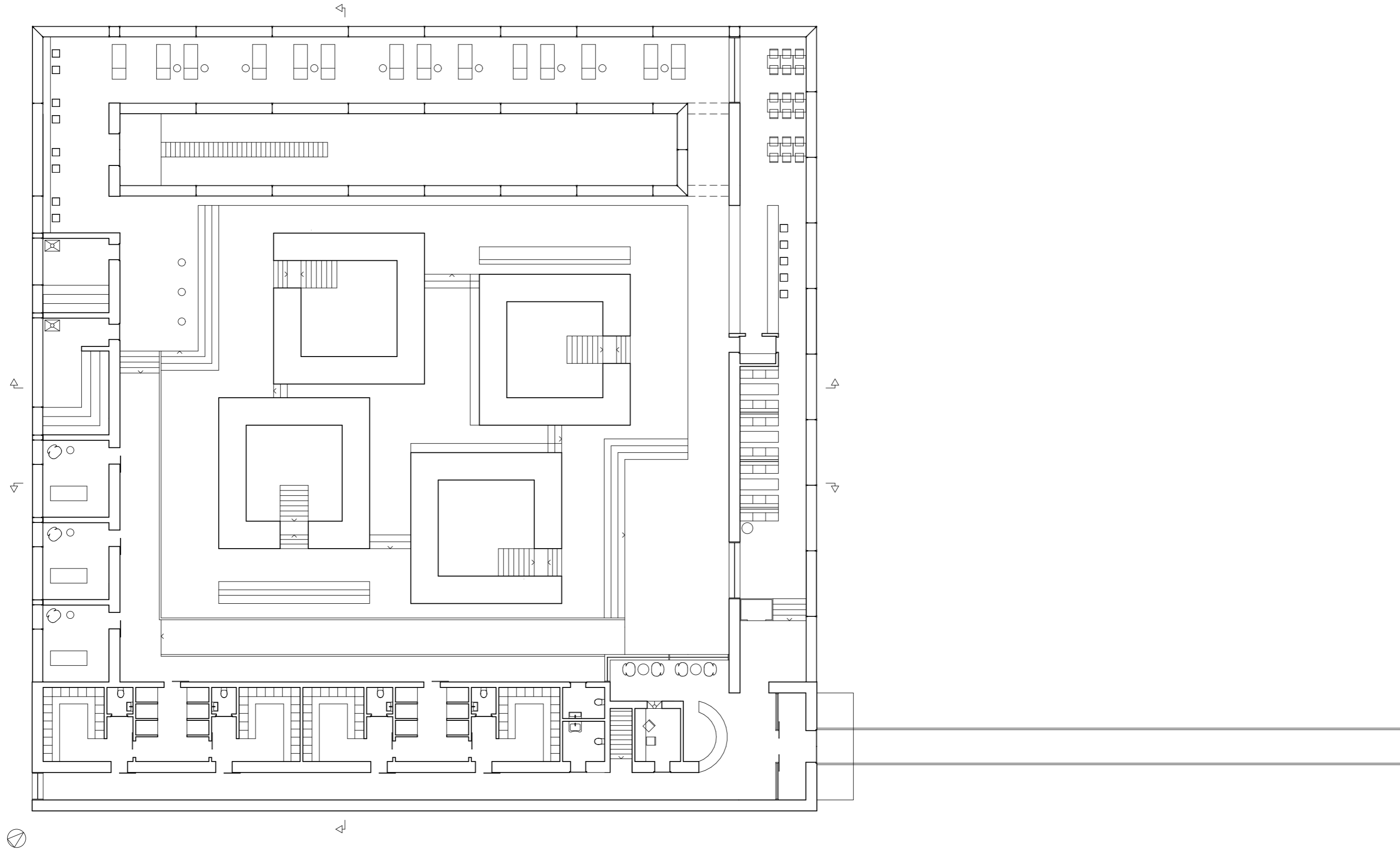
first sun of the year



last sun of the year

Longyearbyen - city center

PLAN - PUBLIC FLOOR



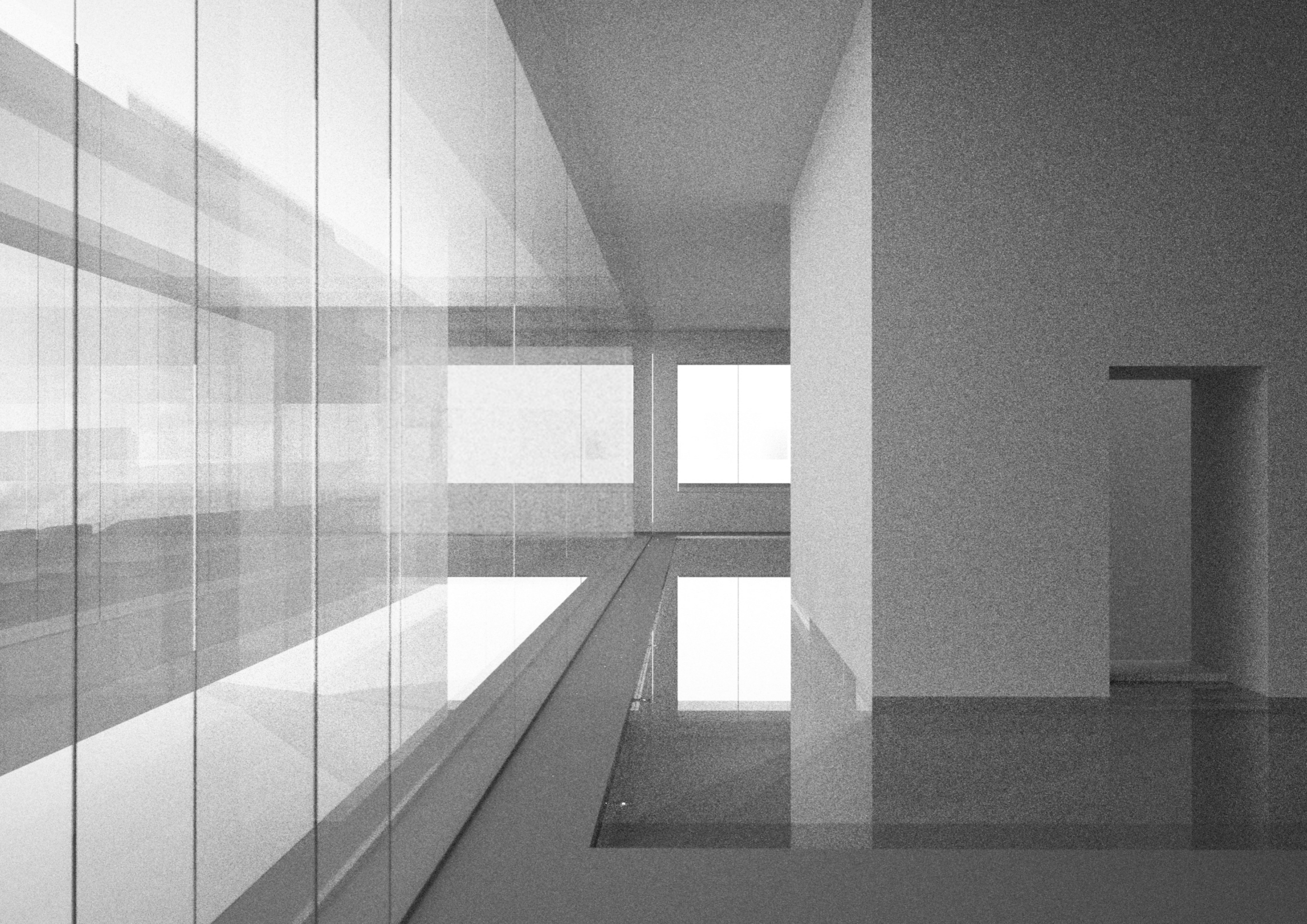




DIAGRAM - POOLS

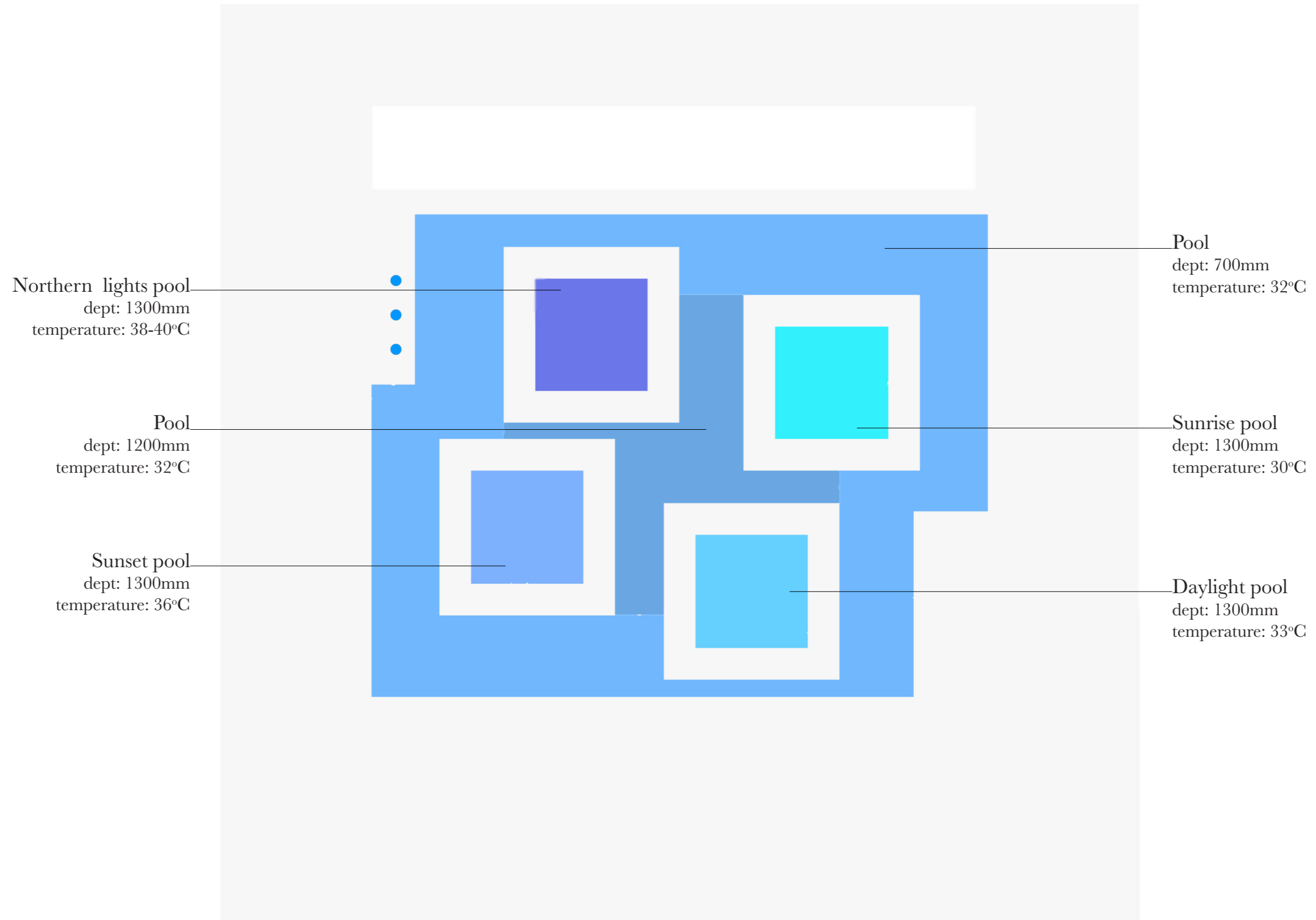
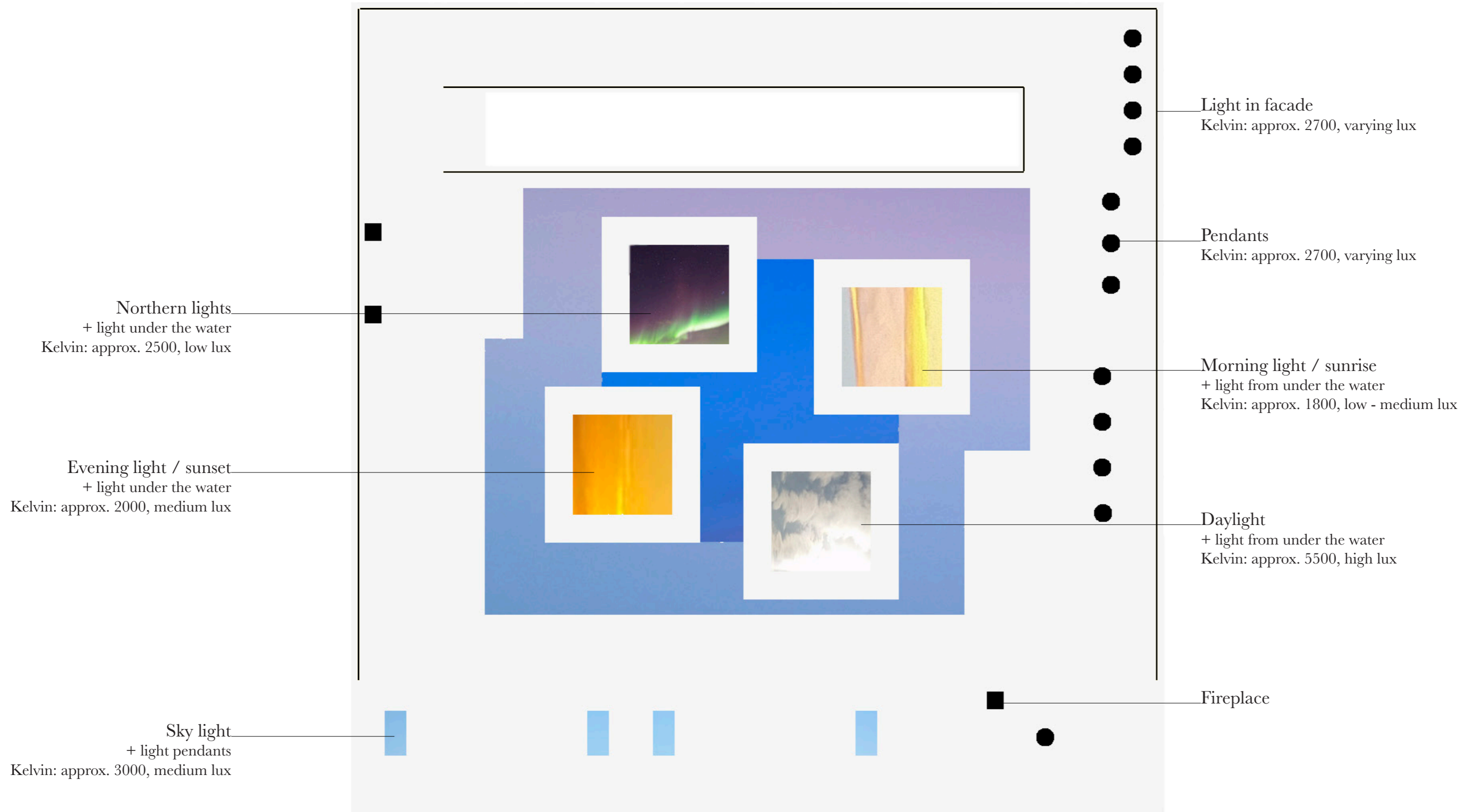
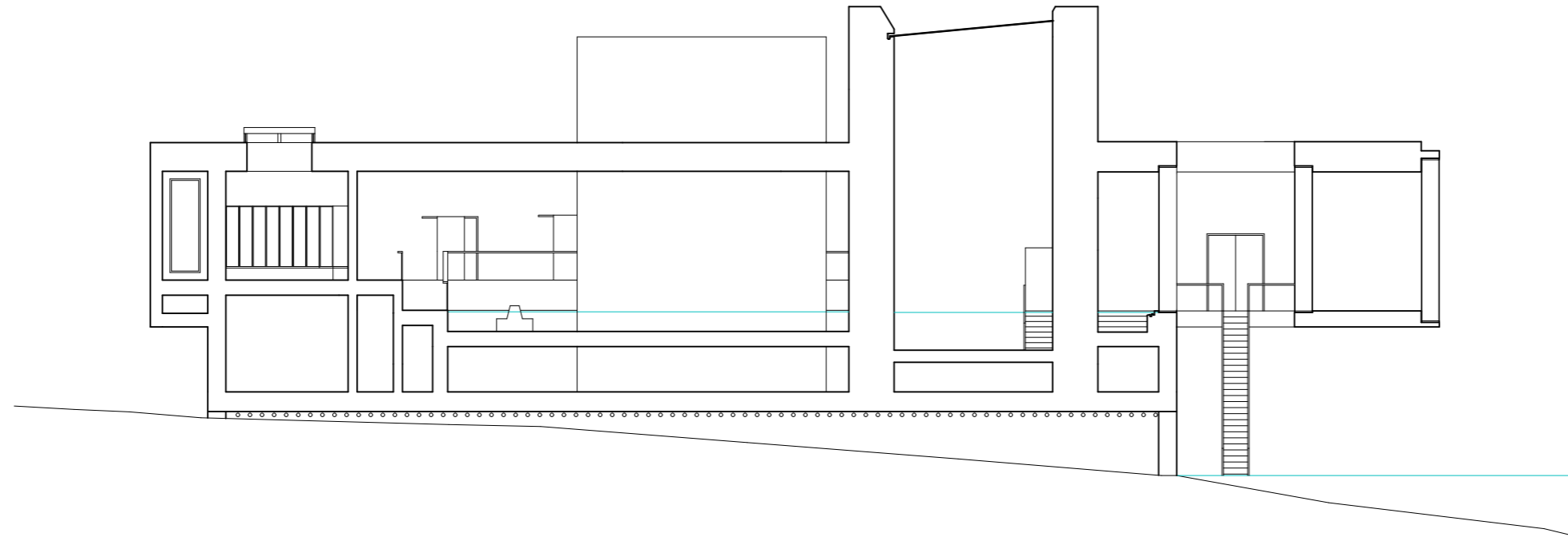


DIAGRAM - LIGHT

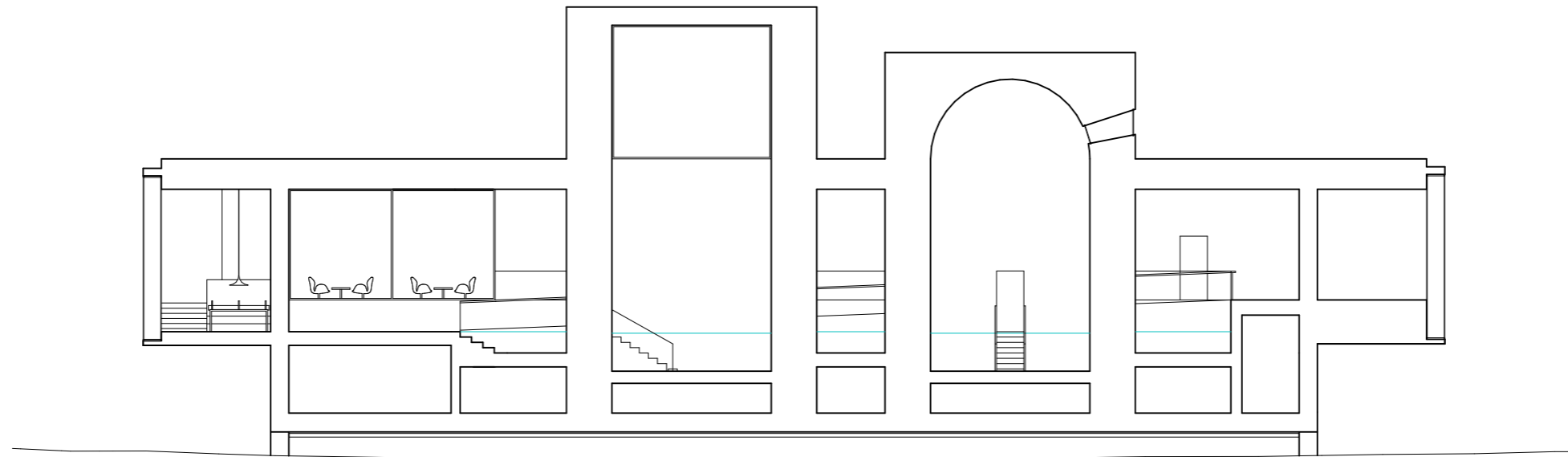


SECTION



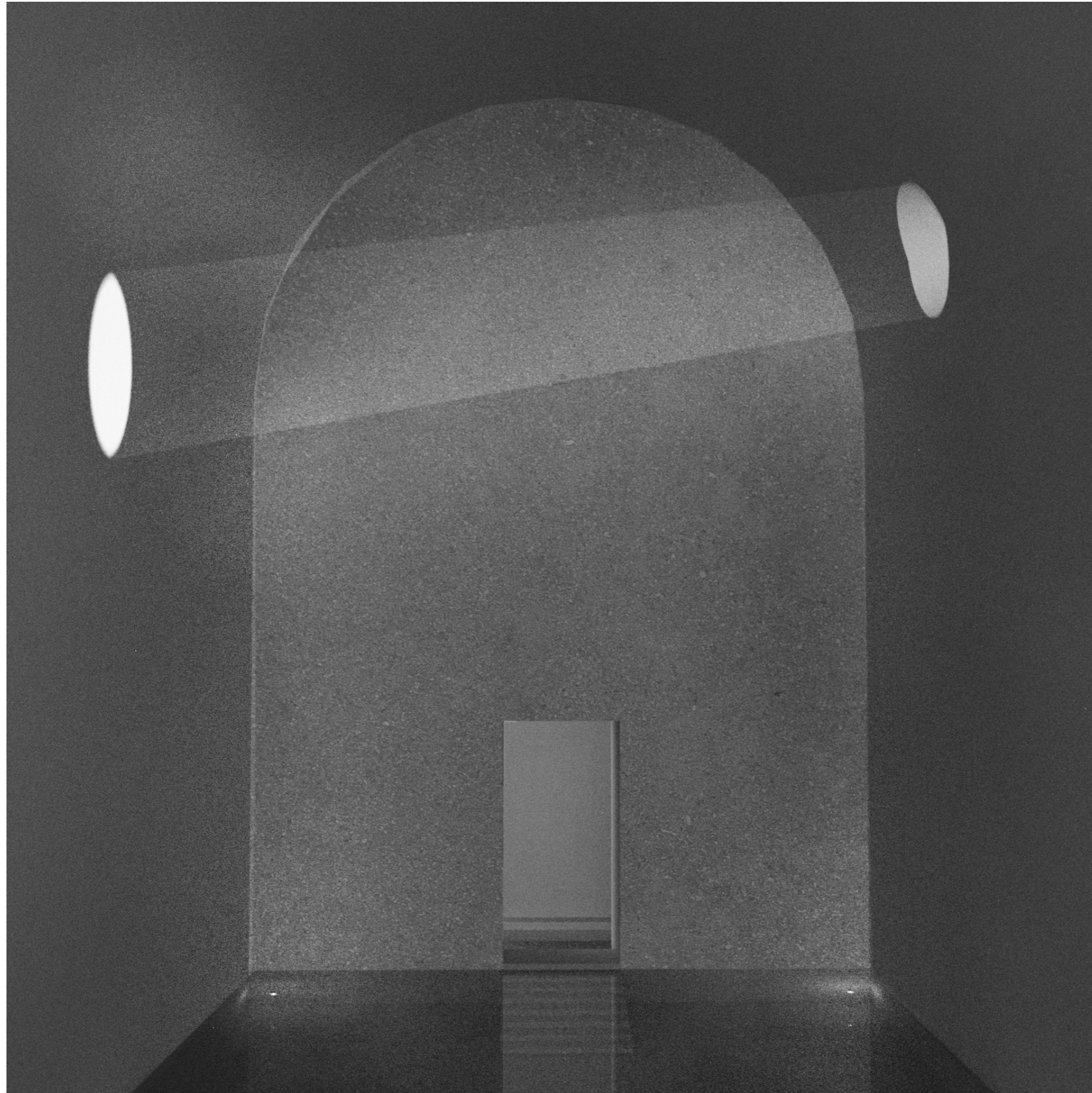


SECTION

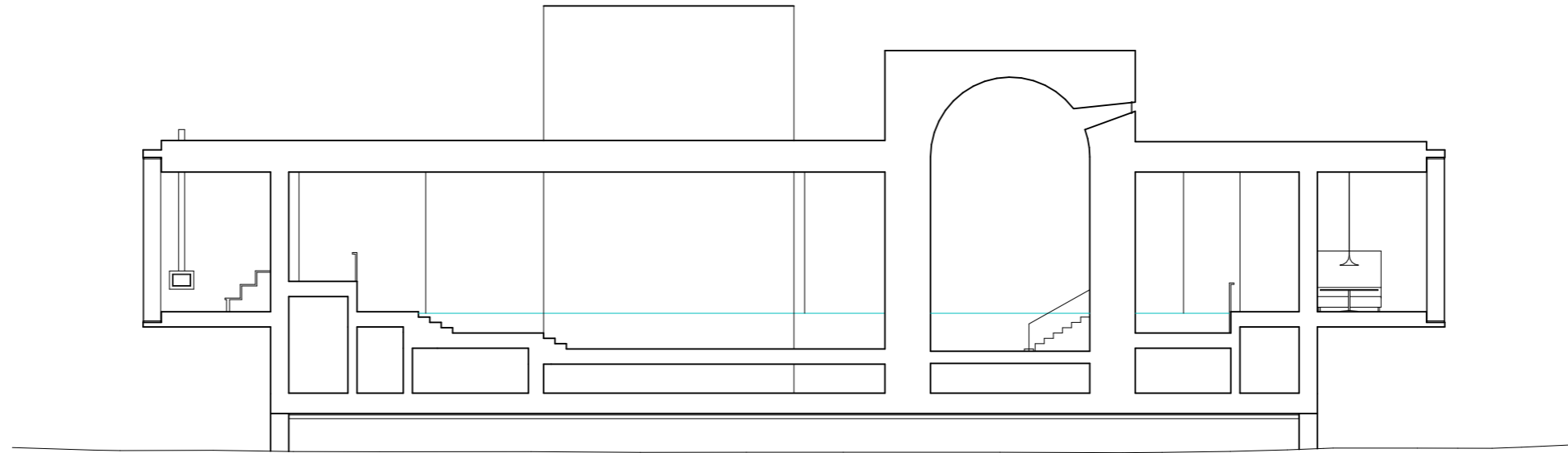


DAYLIGHT BATH



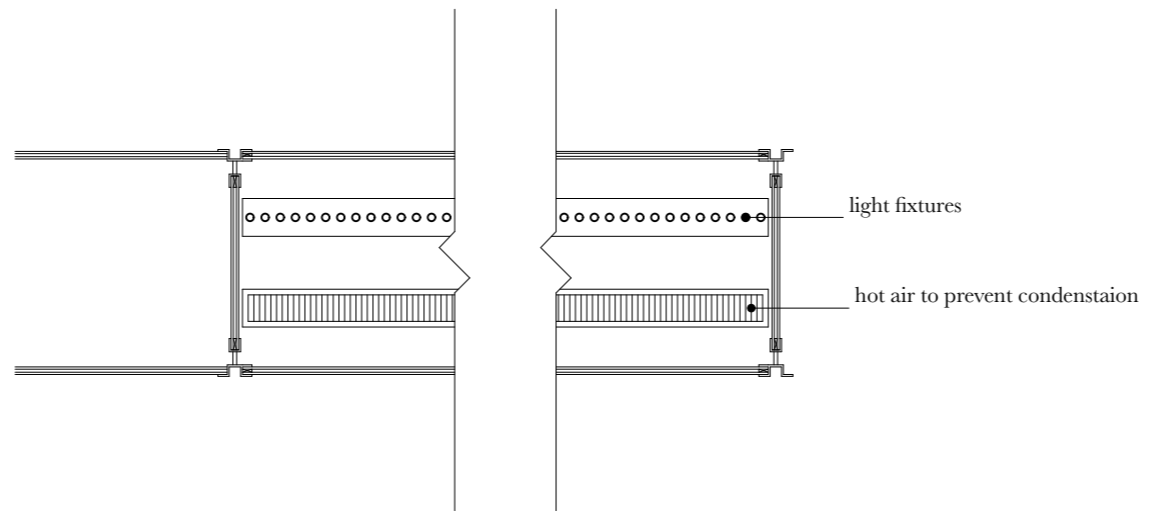
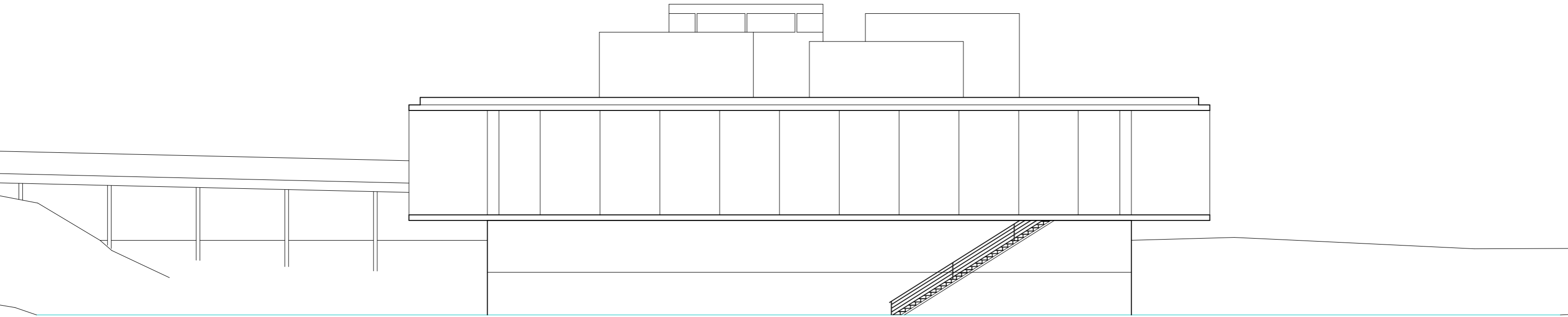


SECTION

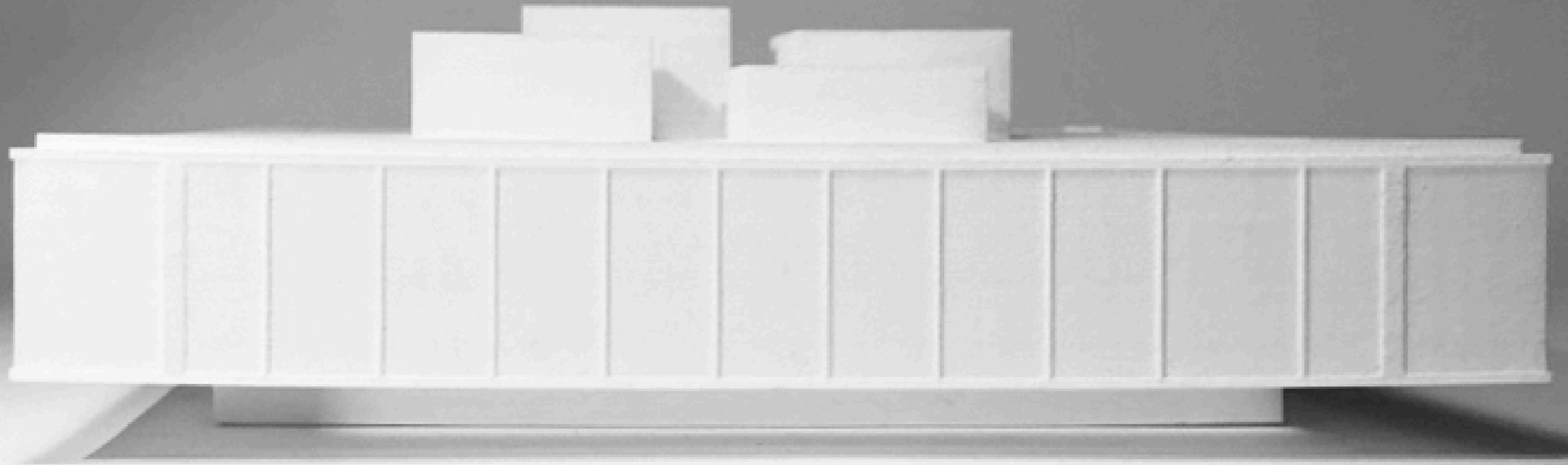


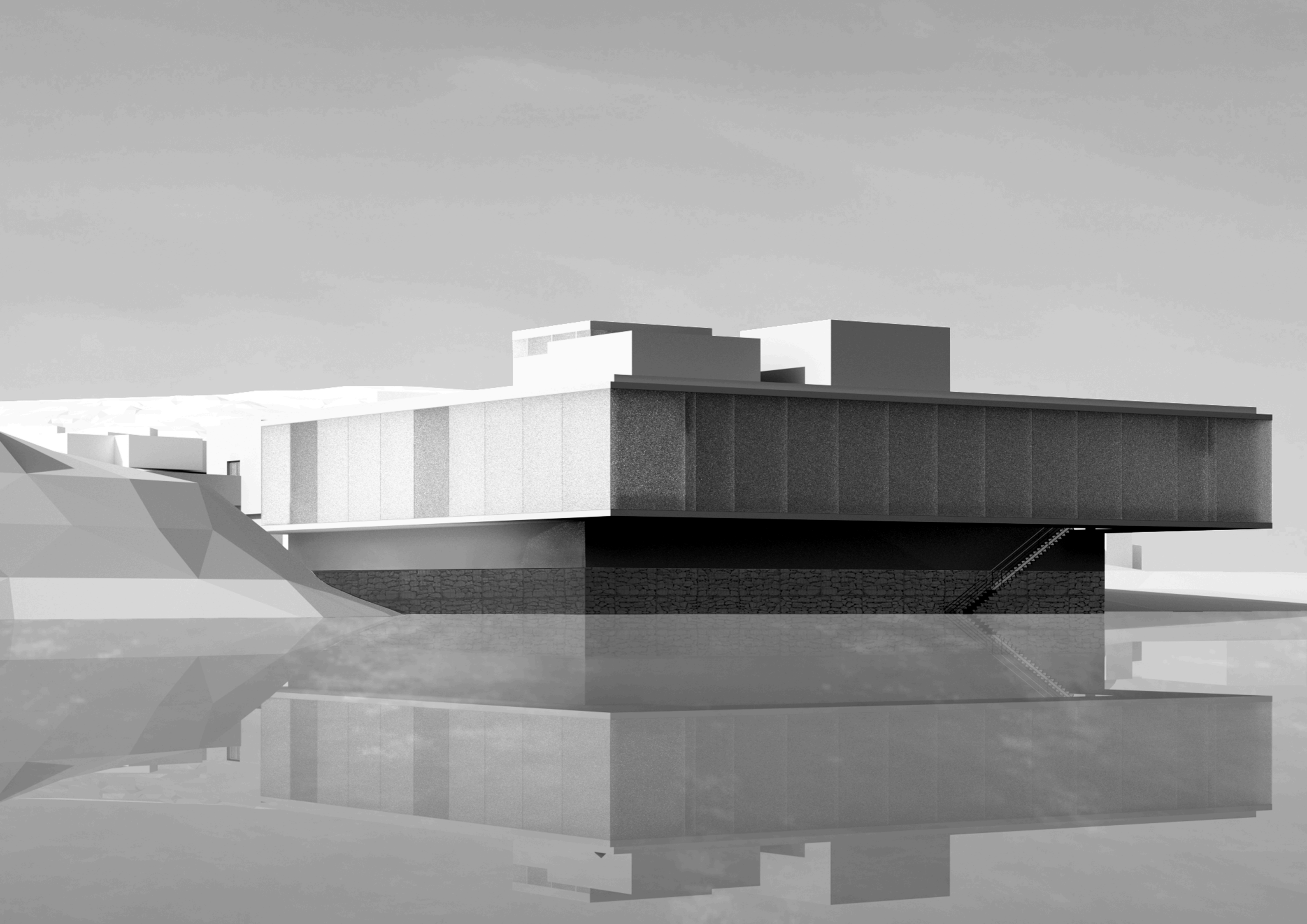


ELEVATION AND FACADE DETAIL

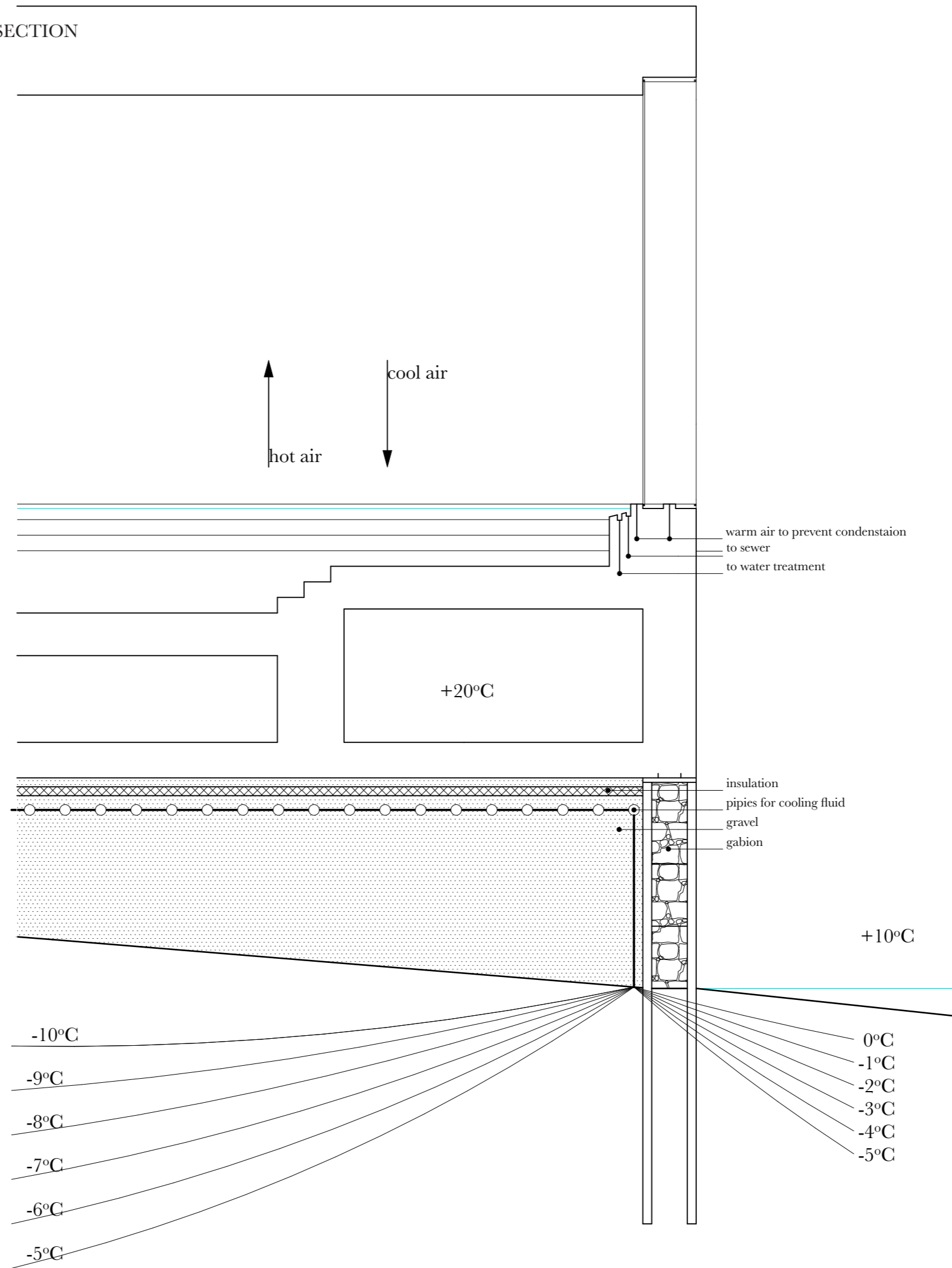


FACADE MODEL

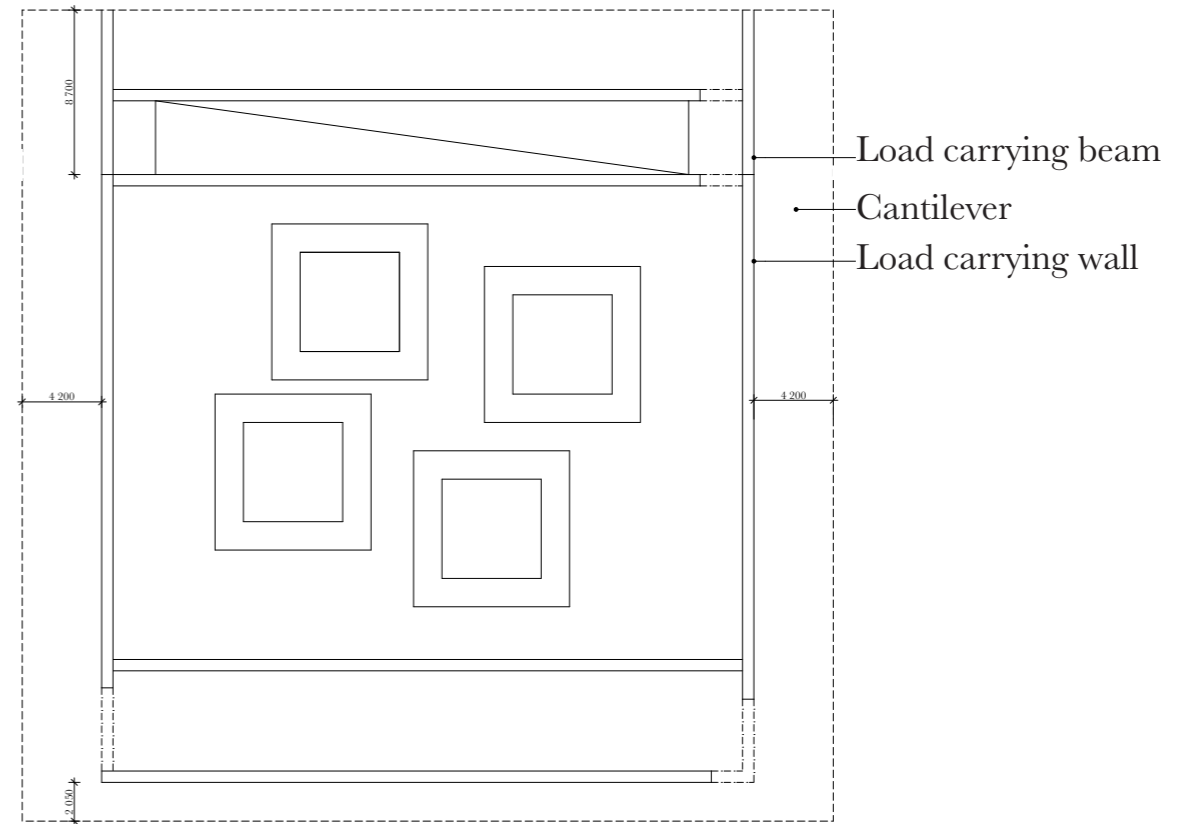
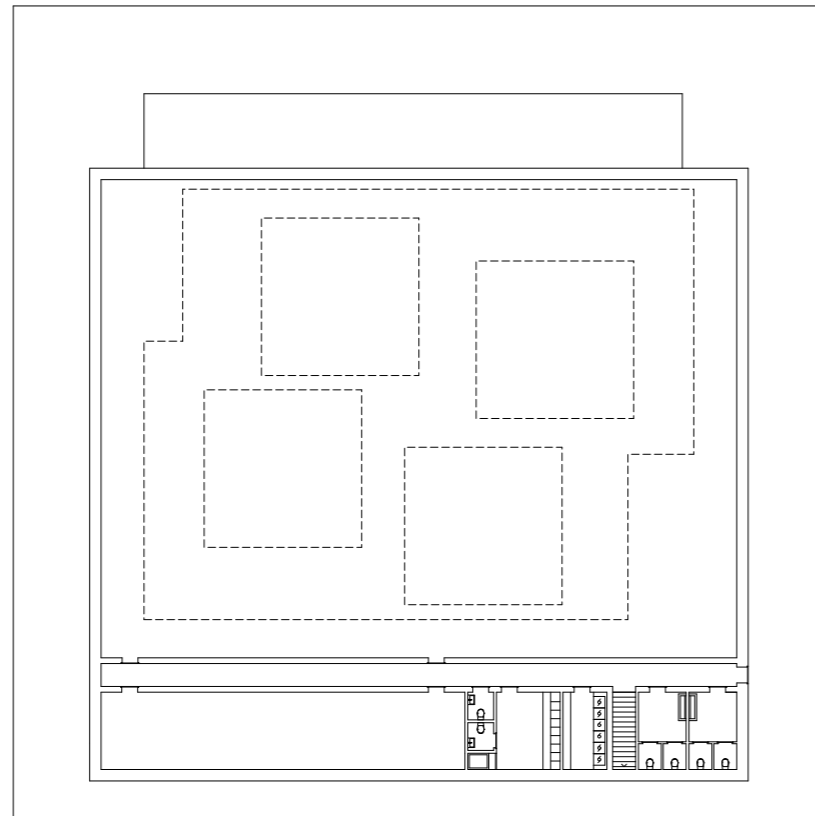




CONSTRUCTION ON PERMAFROST - PRINCIPLE, SECTION



PLAN: TECHNICAL FLOOR AND LOAD CARRYING ELEMENTS MAIN FLOOR



CONSTRUCTION MODEL

