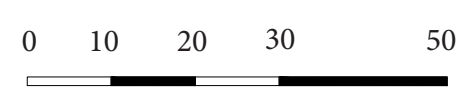
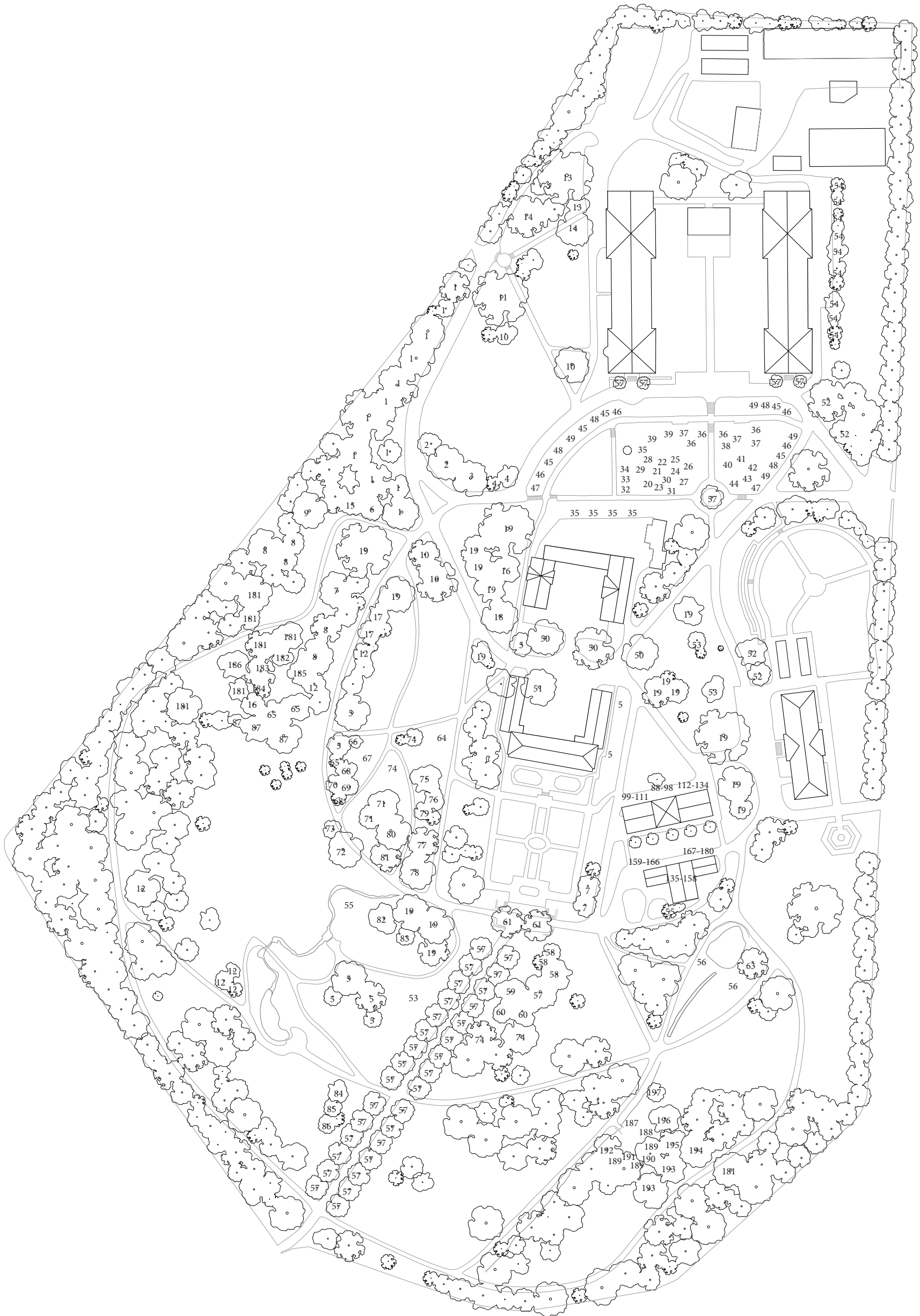


THE UNIVERSITY BOTANICAL GARDEN IN OSLO









- 1 Prunus Avium
- 2 Prunus Serrulata
- 3 Malus purpurea
- 4 Malus profusion
- 5 Betula pendula
- 6 Phellodendron amurense
- 7 Aesculus hippocastanum
- 8 Metasequoia glyptostrodoidea
- 9 Corylus Avellana
- 10 Fagus sylvatica
- 11 Fagus sylvatica 'Atropunicea'
- 12 Pinus Koraiensis
- 13 Larix decidua
- 14 Abies magnifica var. shastensis
- 15 Picea jazoensis
- 16 Picea sitchensis
- 17 Sequoiadendron giganteum
- 18 Fraxinus excelsior
- 19 Acer platanoides

#### OLDEMORS HAGE

- 20 Dianthus plumarius
- 21 Artemisia Abrotanum
- 22 Iris pseudacorus
- 23 Paeonia officinalis
- 24 Rudbeckia laciniata
- 25 Physostegia virginiana
- 26 Bergenia cordifolia
- 27 Helianthus pauciflorus
- 28 Geranium x magnificum
- 29 Lilium lancifolium
- 30 Lythrum salicaria
- 31 Saponaria Officinalis
- 32 Iris sibirica
- 33 Hemerocallis lilioasphodelus
- 34 Primula 'Dorothy'
- 35 Crataegus Monogyna

#### FRUKT LUNDEN (lave trær, max 3,5 meter)

- 36 Malus Domestica Sävstaholm
- 37 Prunus domestica 'Victoria'
- 38 Prunus cerasus 'fanal'
- 39 Humulus lupulus

#### ROSE LUNDEN (lave busker, max 2 meter)

- 40 Centifolia Major
- 41 Alba Maxima
- 42 Alba chloria
- 43 Borboriana
- 44 Rosa Pimpinellifolia
  
- 45 Hydrangea paniculata
- 46 Kerria Japonica
- 47 Berberis thunbergii 'Atropurpurea'
- 48 Berberis Aggregata var. prattii
- 49 Spirea x bumalda 'Anthony Waterer'
- 50 Tilia platyphyllos 'laciniata'
- 51 Carpinus betulus
- 52 Picea abies
- 53 Syringa vulgaris
- 54 Sorbus aucuparia
- 55 Ginkgo biloba
- 56 Salix purpurea 'Nana'
- 57 Quercus robur 'fastigiata'
- 58 Juglans regia ssp. regia
- 59 Gleditsia triacanthos
- 60 Cladrastis kentukea
- 61 Tilia cordata
- 62 Aesculus hippocastanum
- 63 Populus trichocarpa
- 64 Magnolia kobus var. kobus
- 65 Catalpa speciosa
- 66 Calycanthus occidentalis
- 67 Magnolia acuminata
- 68 Magnoliakobus var. borealis
- 69 Magnolia x Soulangeana

- 70 Viburnum lantana
- 71 Thuja occidentalis 'holmstrup'
- 72 Corylus colurna
- 73 Chamaecyparis pisifera
- 74 Hippophae rhamnoides
- 75 Toxicodendron verniciflua
- 76 Ptelea trifoliata
- 77 Phellodendron japonicum
- 78 Phellodendron sachalinense
- 79 Cornus florida
- 80 Gleditsia triacanthos var. intermis
- 81 Picea pungens 'glauca globosa'
- 82 Taxus baccata 'overeynderi'
- 83 Pinus pumila
- 84 Prunus serotina
- 85 Prunus maackii
- 86 Ostrya virginiana
- 87 Stewartia pseudocamellia var. koreana

#### PALMEHUSET

#### EVOLUSJONS ROMMET

- 88 Cibotium Schiedeii
- 89 Cycas Taiwaniana
- 90 Queen sago- Cabacas cycas
- 91 circinalis
- 92 Araucaria cunninghamii
- 93 Agathis robusta
- 94 Cedrus libani
- 95 Dicksonia antarctica
- 96 Podocarpus Macrophyllus
- 97 Laurus azorica
- 98 Wollemia nobilis

#### MIDDELHAVET

- 99 Citrus sinensis
- 100 Quercus suber
- 101 Cinnamomum camphora
- 102 Laurus nobilis
- 103 Ceratonia siliqua
- 104 Eucalyptus globulus
- 105 Olea europea sub sp. africana
- 106 Strelitzia reginae
- 107 Ficus carica
- 108 Pistacia lentiscus
- 109 Sideroxylon marmulana
- 110 Strelitzia nicolai
- 111 Camellia sinensis

#### ØRKEN KLIMA

#### AFRIKA

- 112 Crassula ovata
- 113 Aloe chabaudii
- 114 Gasteria disticha
- 115 Aloe dichotoma
- 116 Aloe vera
- 117 Adromiscus maculatus
- 118 Euphorbia triangularis
- 119 Haworthia altilinea
- 120 Aloe volkensii
- 121 Euphorbia heptagonia

#### AMERIKA

- 122 Mammillaria sartorii
- 123 Ferocactus wislizeni
- 124 Agave sisalana
- 125 Abromeitiella brevifolia
- 126 Cleistocactus strausii
- 127 Echiveria pulvinata
- 128 Opuntia cardiosperma
- 129 Armatocereus rauhii
- 130 Agave striata
- 131 parodia magnifica
- 132 Agave filifera
- 133 Echinopsis tubiflora
- 134 Opuntia ficus- indica

#### VICTORIAHUSET

#### VICTORIA ROMMET

- 135 Pavonia multiflora
- 136 Gossypium ssp
- 137 Petrea volubilis
- 138 Erythrochito brasiliensis
- 139 Pandanusutilis- Skruopalme
- 140 Azolia caroliniana
- 141 Pentas lanceolata
- 142 Synsepalum dulcificum
- 143 Spathiphyllum wallisii
- 144 Clusia minor
- 145 Hamelia patens
- 146 Cotus Neulumbo nucifera
- 147 Echinodrus muricatus
- 148 Rhizophora mangle
- 149 Barleria cristata
- 150 Hibiscus greveanus
- 151 Piper nigrum
- 152 Zingiber officinale
- 153 Stephenotis floribunda
- 154 Rivina humilis
- 155 Aristolochia macrourea
- 156 Brunfelsia americana
- 157 Cinnamomum zeylanicum
- 158 Victoria cruziana

#### AFRIKA ROMMET

- 159 Carica papaya
- 160 Catharanthus roseus
- 161 Pachypodium lamieri
- 162 Coffea arabica
- 163 Seadoxus puniceus
- 164 Musa sp.
- 165 Sorghum bicolor
- 166 Calvoa orientalis

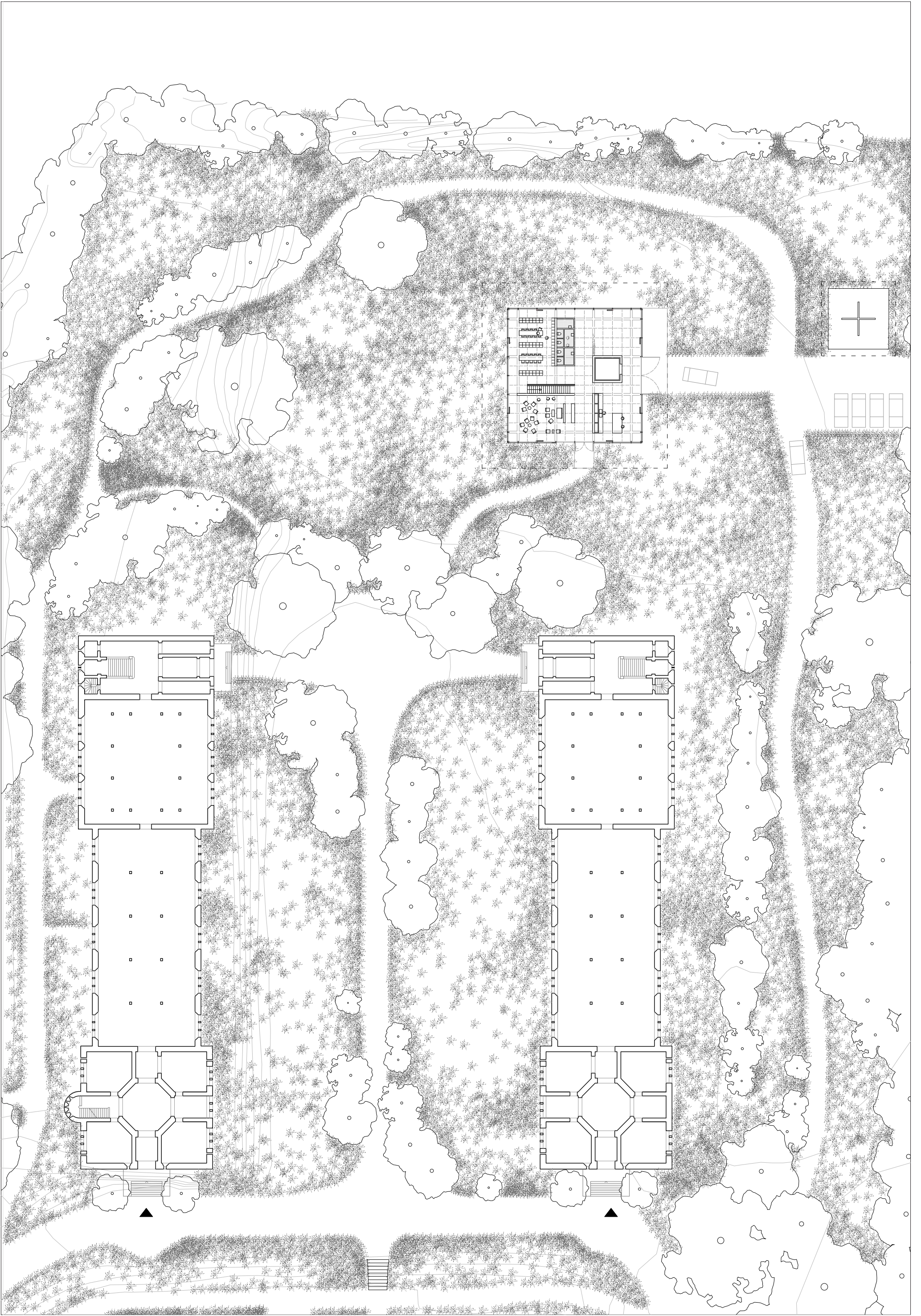
#### EPIFYTT ROMMET

- 167 Vanila planifolia
- 168 Dendrobium thyrsiflorum
- 169 Ascocentrum miniatum
- 170 Billbergia decora
- 171 Ananas comosus
- 172 Dendrobium spectabile
- 173 Guzmania lingulata
- 174 Corytoplectus capitatus
- 175 Styliidium debile
- 176 Pothos scandens

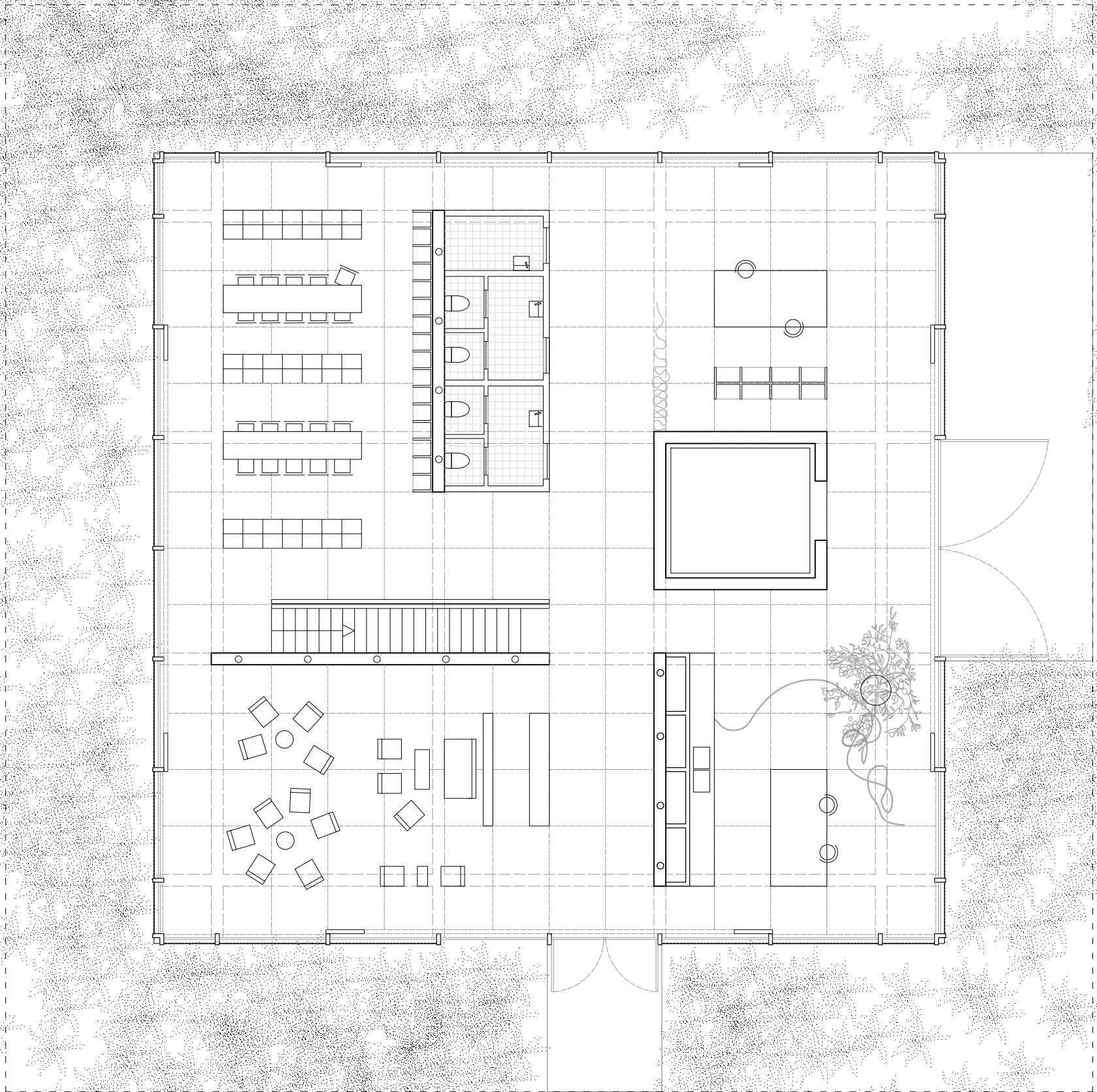
#### moser:

- 177 Dionaea muscipula
- 178 Sarracenia sp.
- 179 Pinguicula moranensis
- 180 Tilliandsia usneoides
  
- 181 Pseudotsuga menziesii f. casia
- 182 Pinus nigra ssp. nigra
- 183 Picea pungens 'glauca'
- 184 Picea engelmannii
- 185 Pinus strobus
- 186 Juglan regia ssp. regia
- 187 Acer sieboldianum
- 188 Magnolia sieboldii
- 189 Fargesia murielae 'jumbo'
- 190 Phyllostachys aureosulcata
- 191 Phyllostachys propinqua
- 192 Salix Triandra
- 193 Acer pseudoplatanus
- 194 Acer campestre
- 195 Acer trautvetteri
- 196 Acer rubrum
- 197 Populus tremula







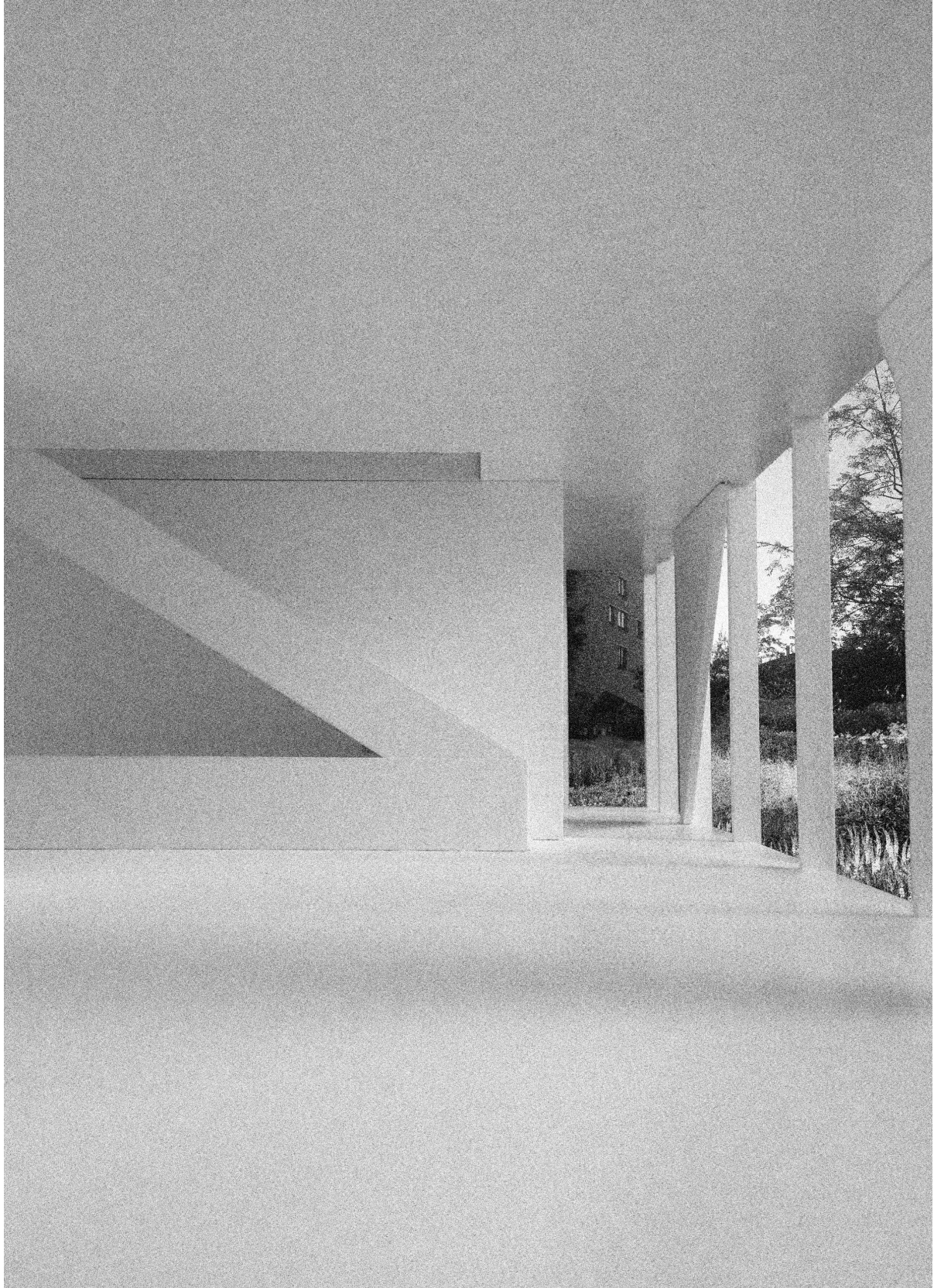


GROUND FLOOR

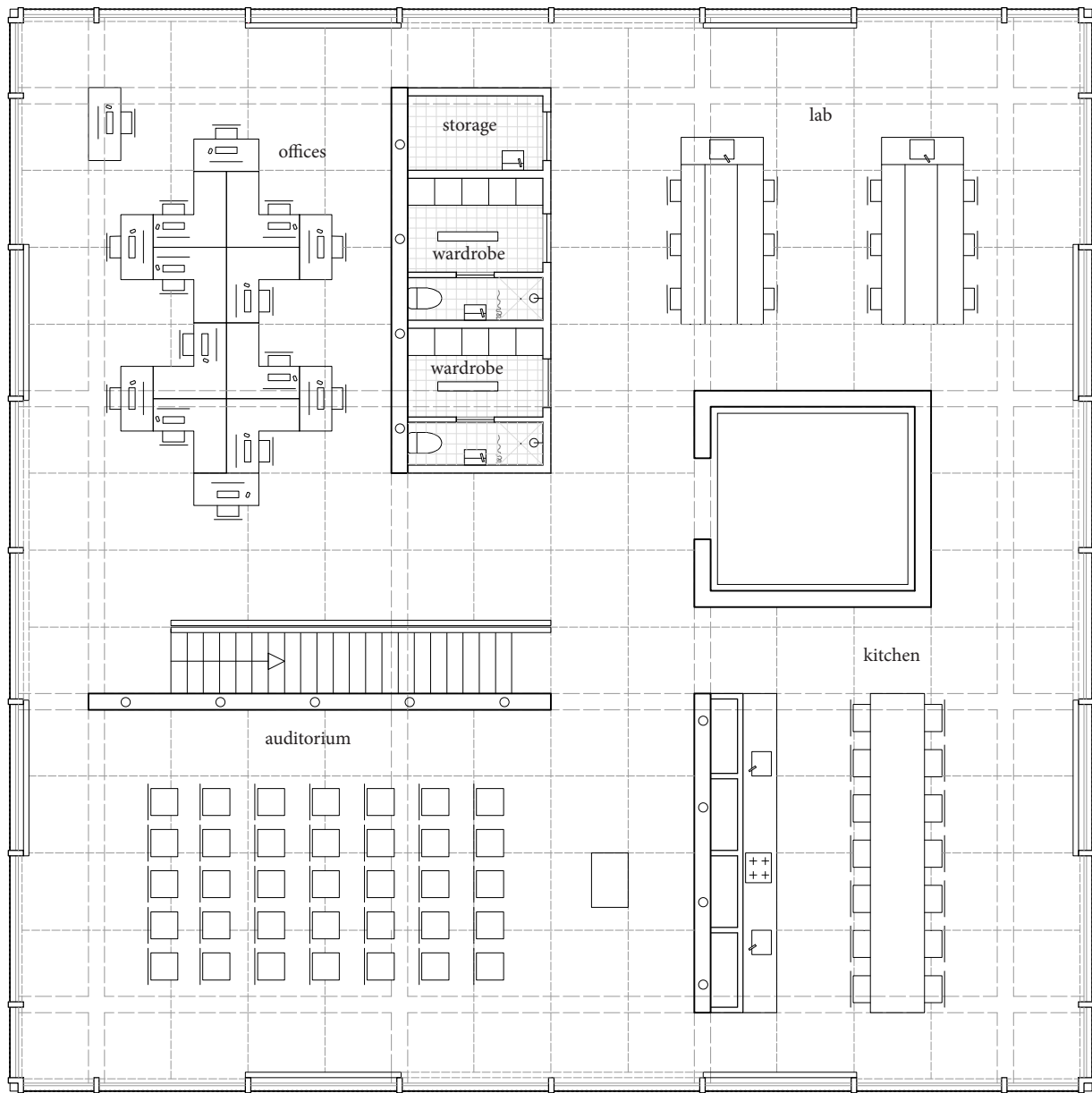
1:125







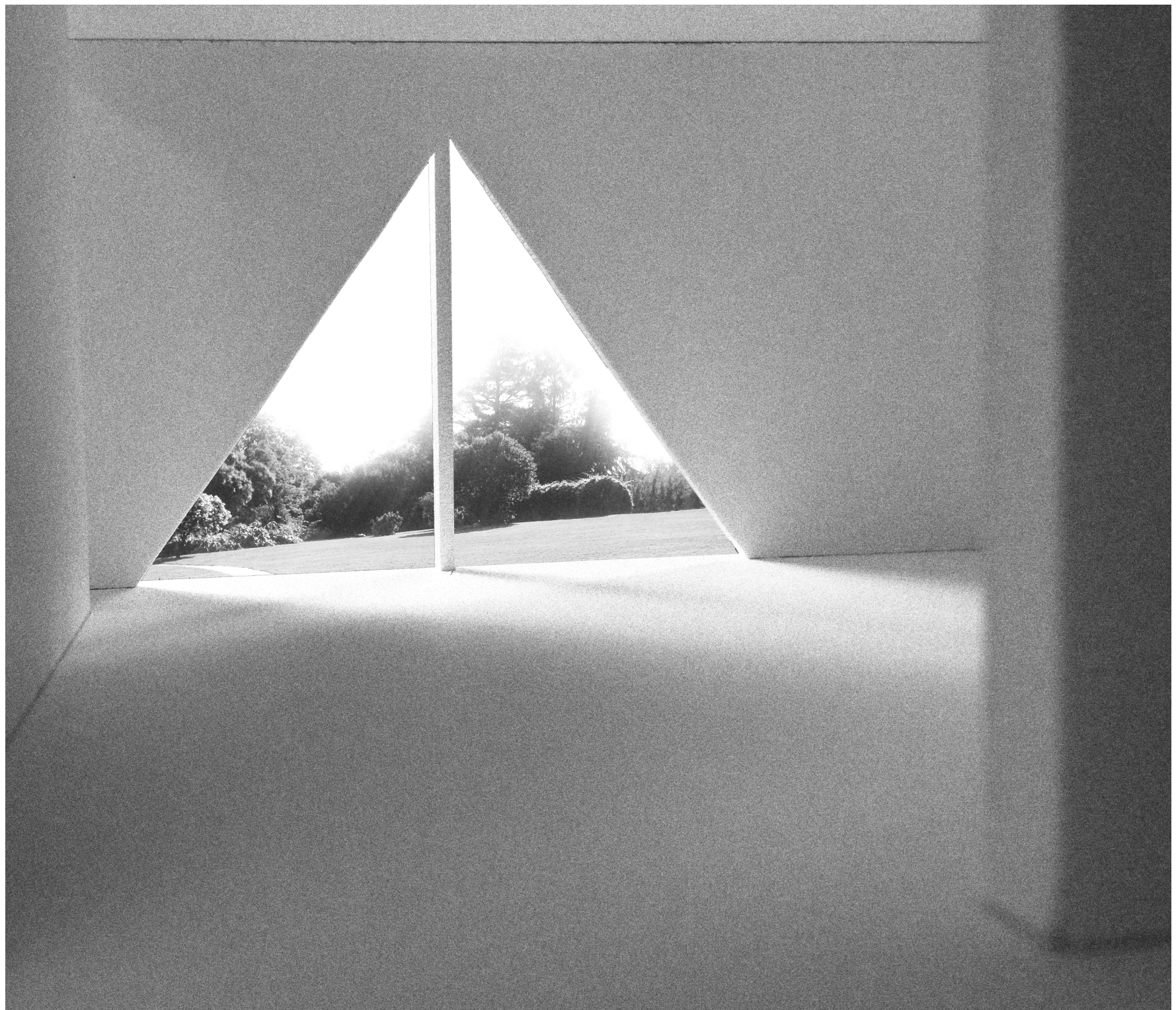




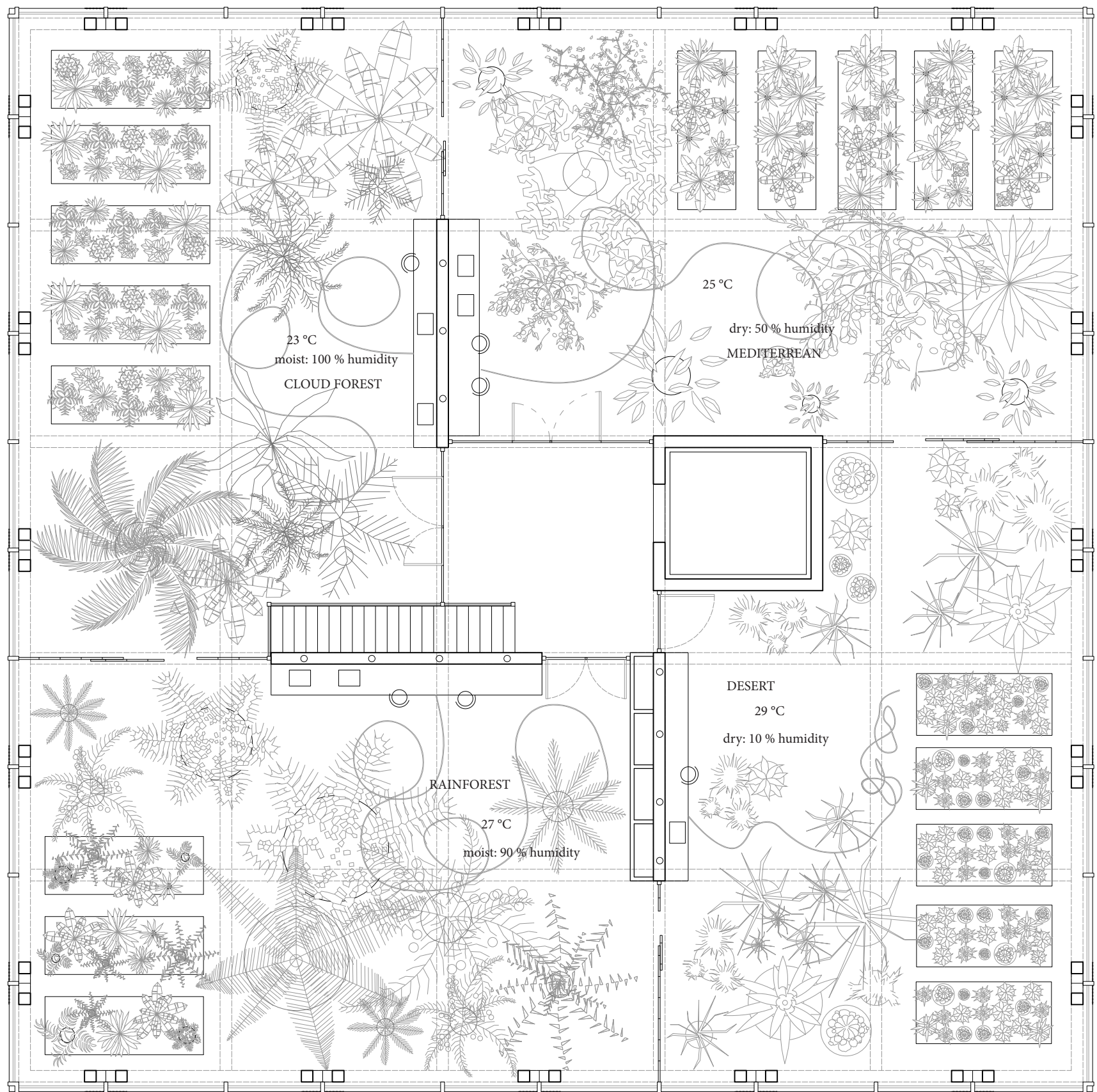
FIRST FLOOR  
1:125











PLANT SPACES  
1:125

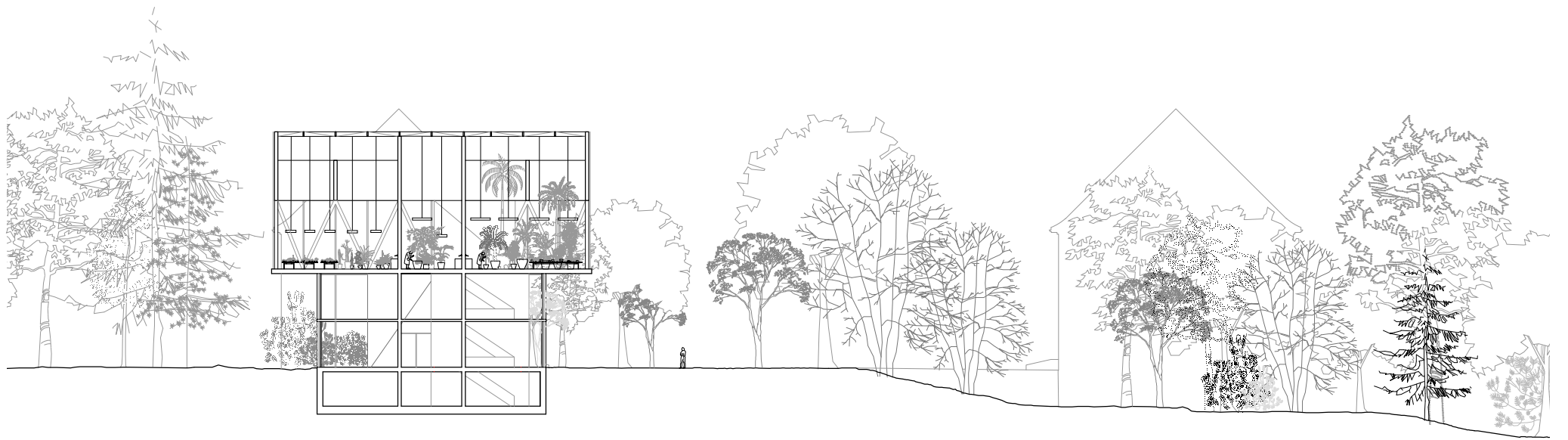






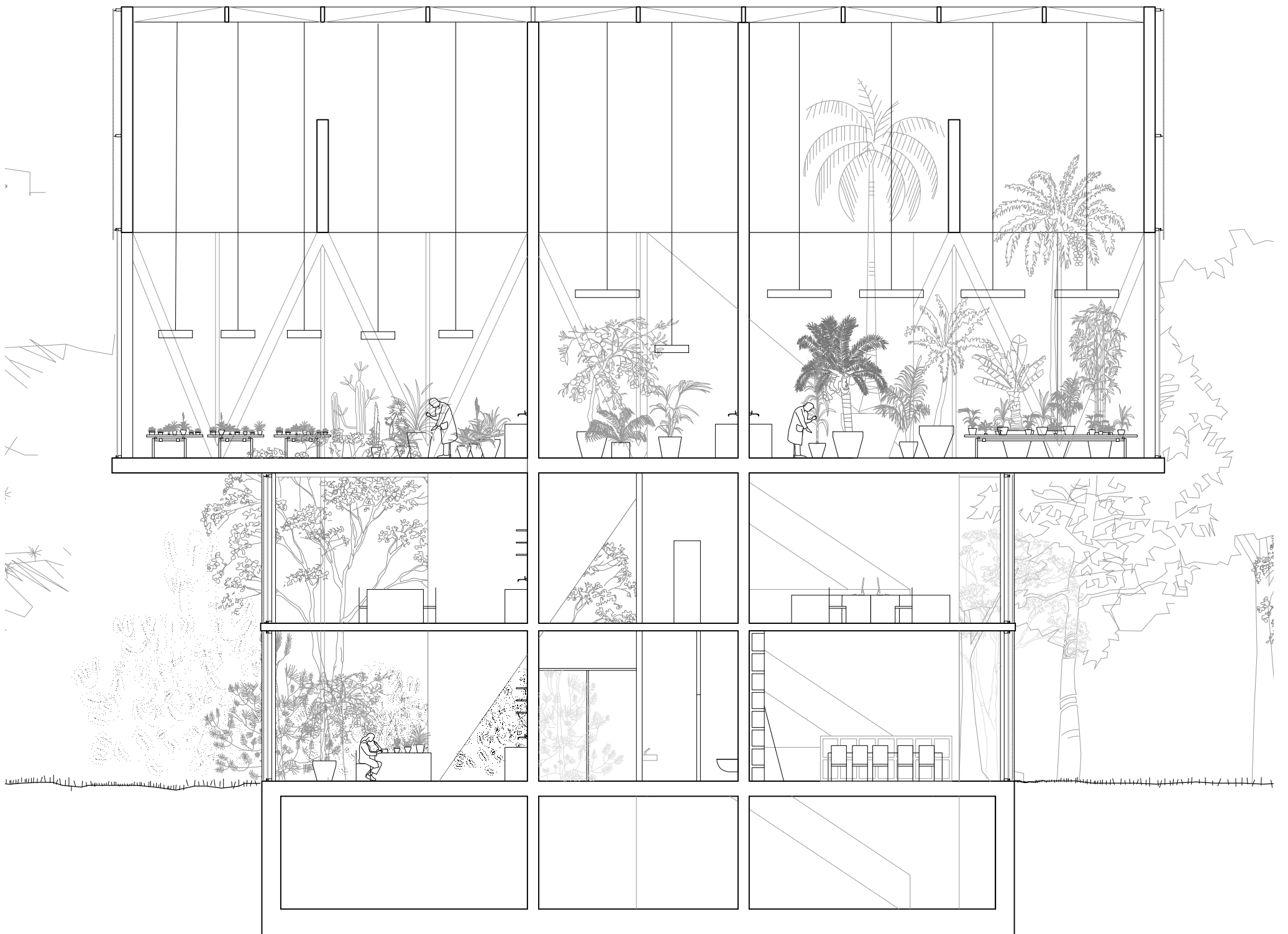




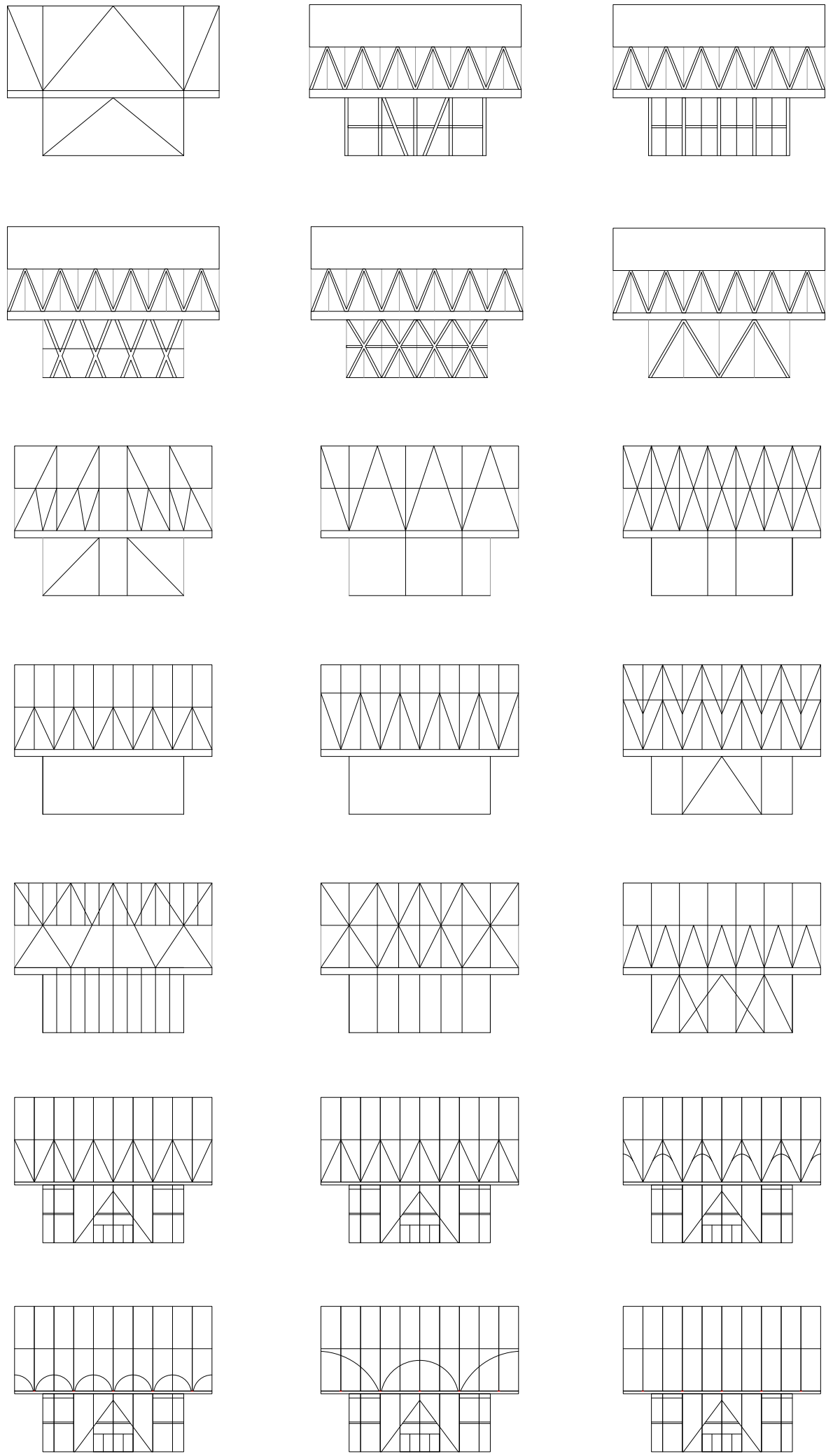


SECTION  
1:500





SECTION  
1:125



FACADE AND TRUSS SYSTEM  
1:750



