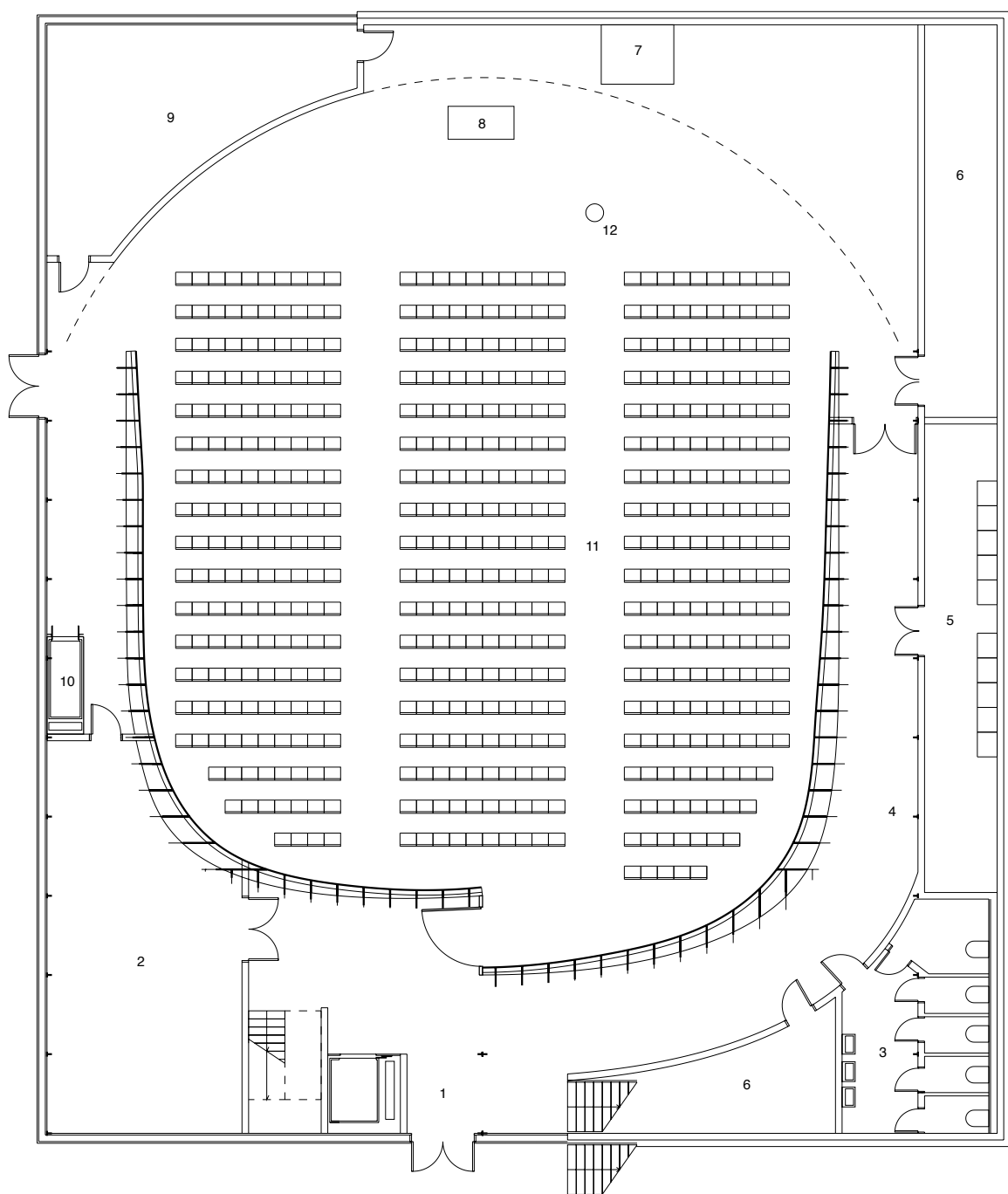
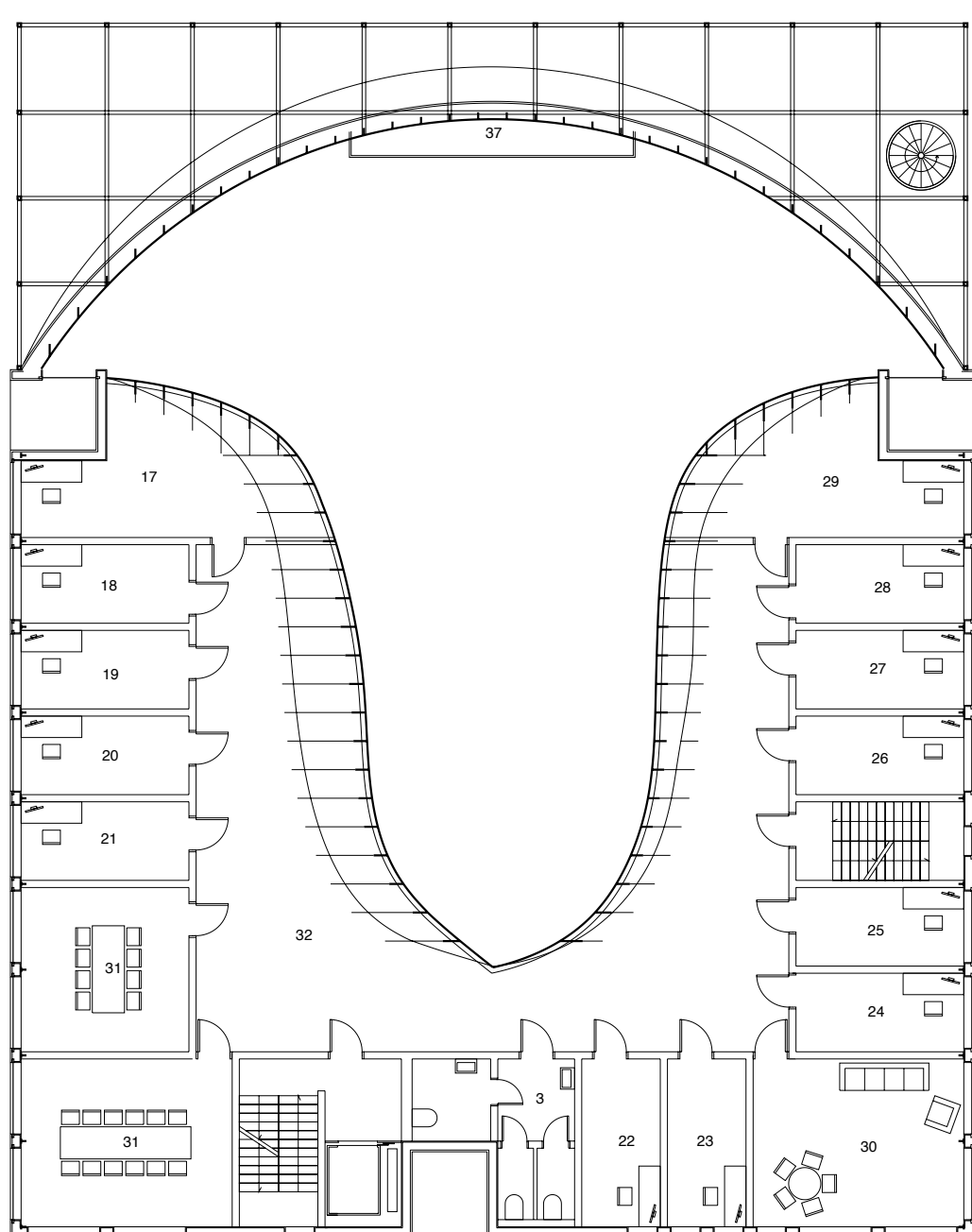


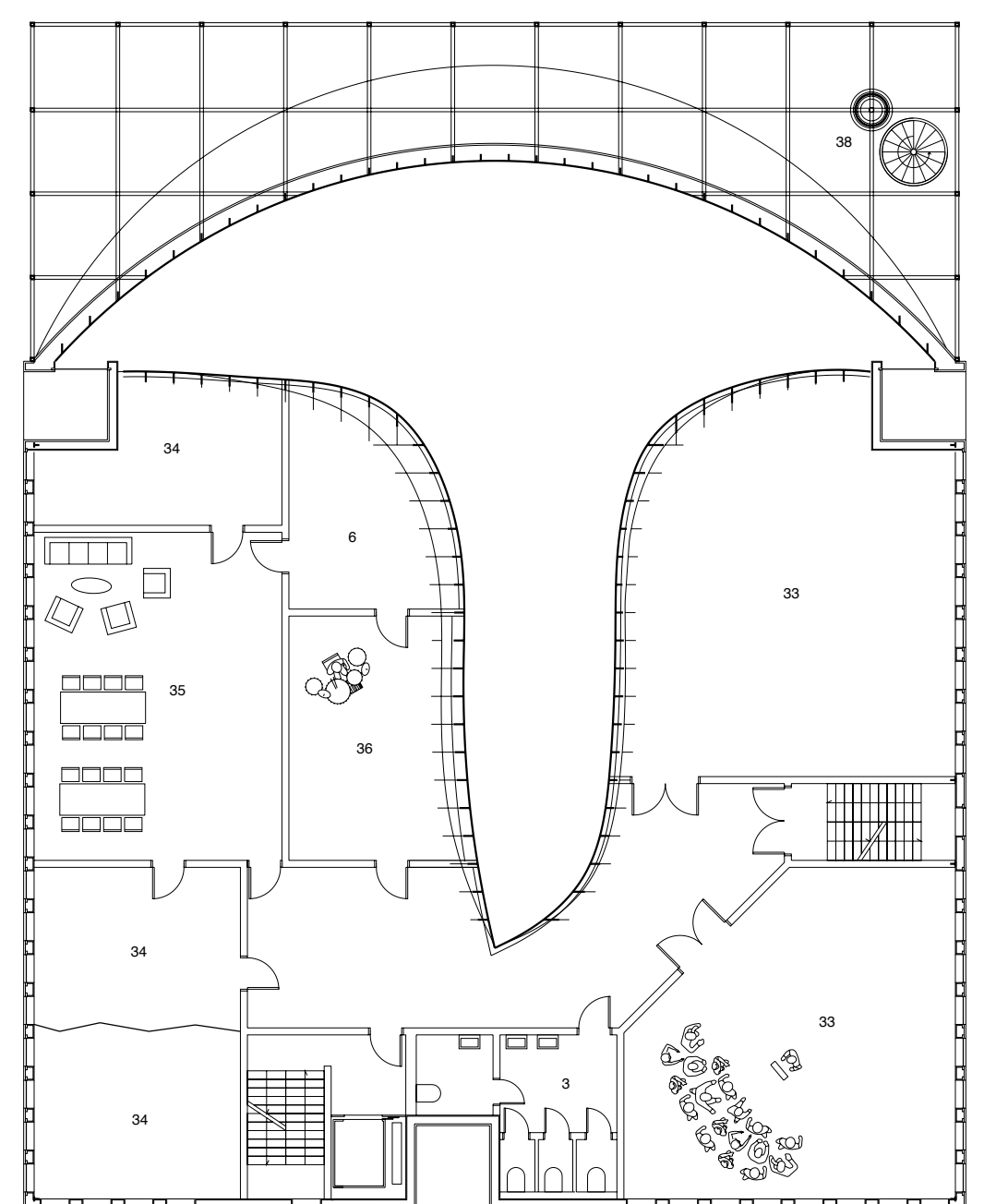
- 1. Main entrance
- 2. Waitingroom before ceremony
- 3. WC
- 4. Vestibule
- 5. Technical room
- 6. Storage
- 7. Organ console
- 8. Altar
- 9. Sanctuary
- 10. Coffin elevator
- 11. Main church assembly hall, 500 seats
- 12. Baptismal font
- 13. Coffin storage room
- 14. Chancel
- 15. Church living room
- 16. Kitchen
- 17. Office priest
- 18. Office Youth and children
- 19. Office Catechist
- 20. Office Usher
- 21. Office Secretary
- 22. Office staff
- 23. Office Cantor
- 24. Office Faith Counseling
- 25. Office Church Warden
- 26. Office Deacon
- 27. Office Regional Priest
- 28. Office guard
- 29. Office Janitor
- 30. Bathing room
- 31. Reading room
- 32. Corridor w. Archive
- 33. Hall
- 34. Dressing room
- 35. Gathering room
- 36. Board studio
- 37. Pipe Organ
- 38. Bell



Ground floor



Second floor



Third floor