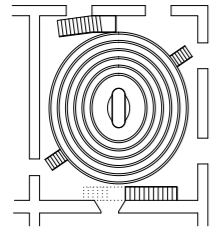
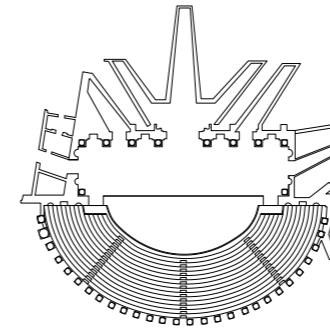


CENSOR BOOKLET

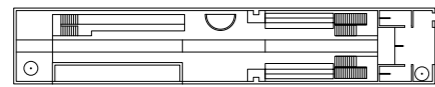
REFERENCES



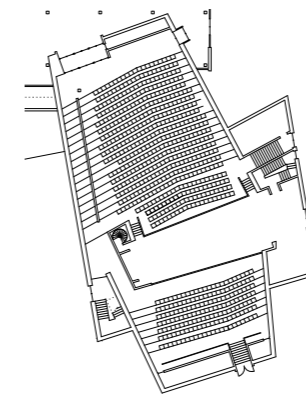
The Anatomy Theatre, Andrea Moroni (1594)



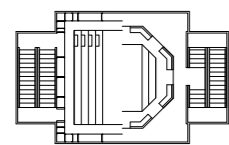
Teatro Olimpico, Andrea Palladio (1580)



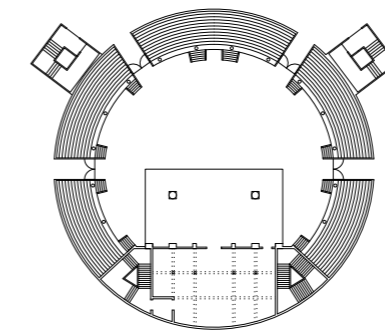
Teatro Oficina, Lina Bo Bardi (1984)



Academy of fine arts Berlin, Werner Düttmann (1960)

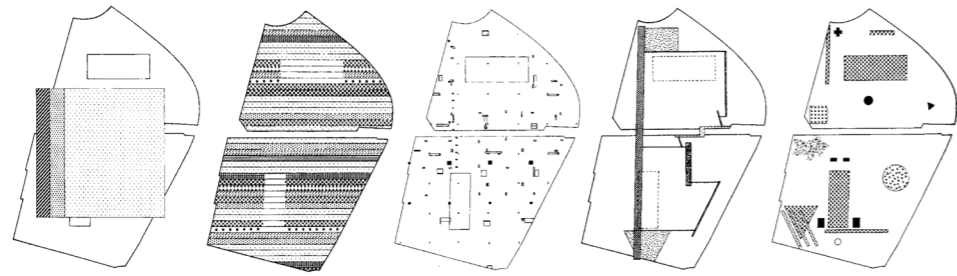


Teatro del Mondo, Aldo Rossi (1979)

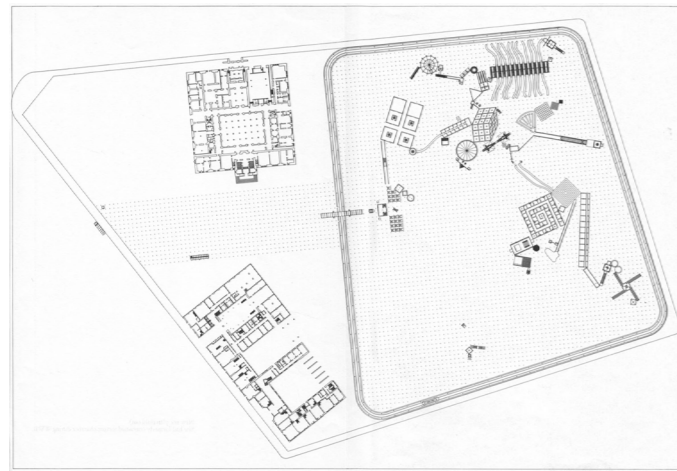


The Globe Theatre, James Burbage (1597)

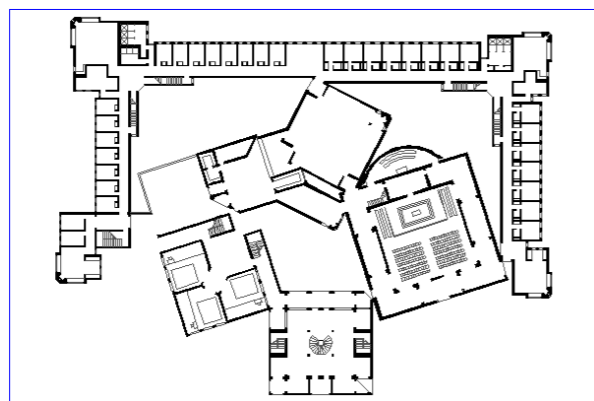




Bernard Tschumi - Parc de la Villette



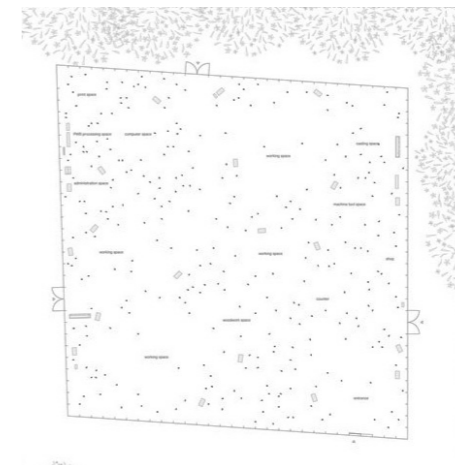
John Hejduk - "Victims"



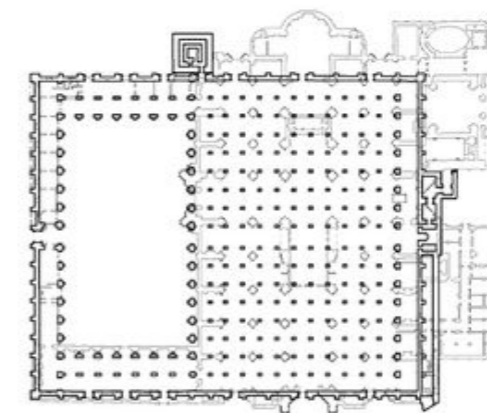
Louis Kahn - Motherhaus



Sana -



Ishigami -



Great Mosque of Cordoba -

PROCESS

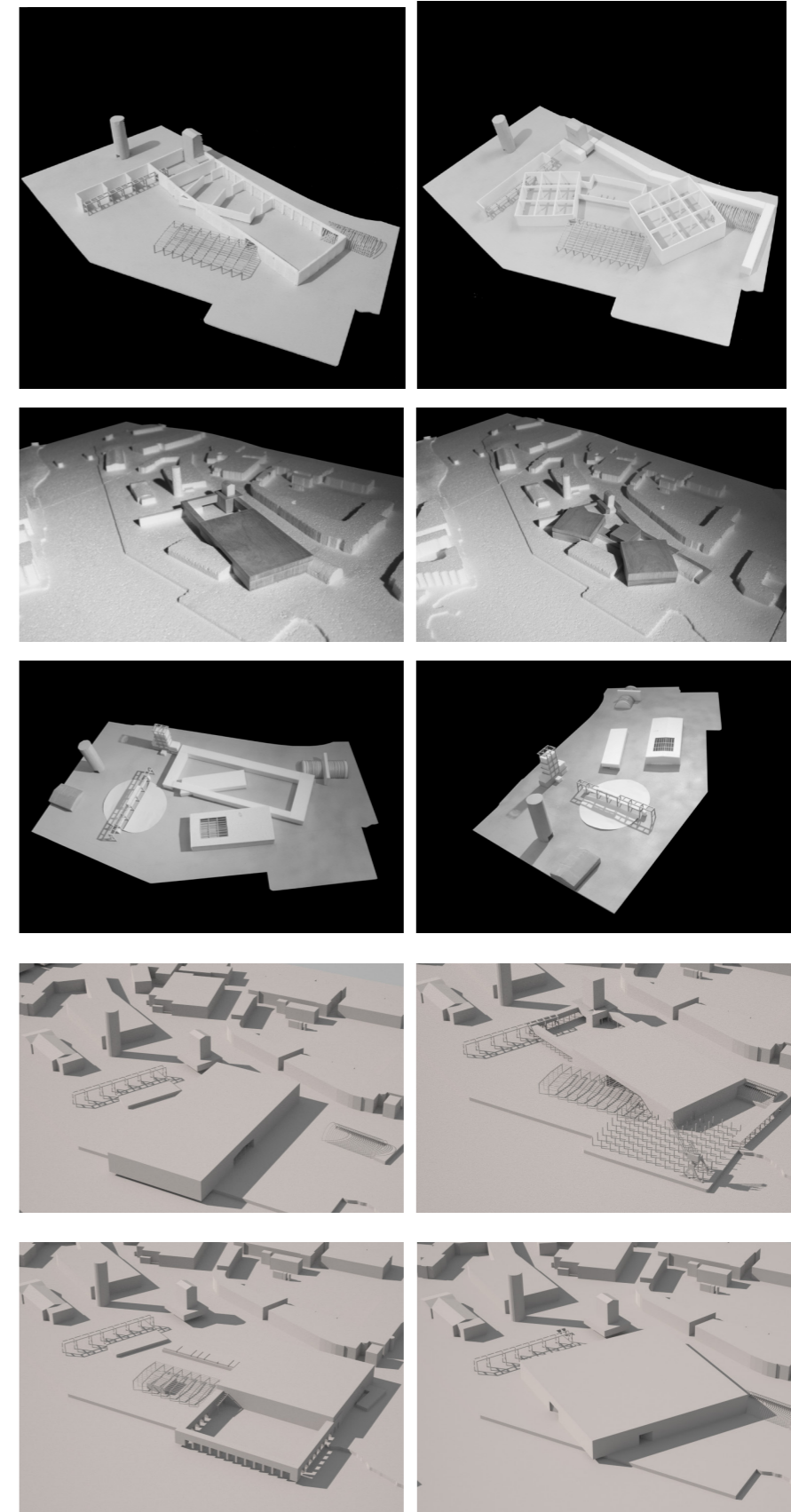
PROCESS

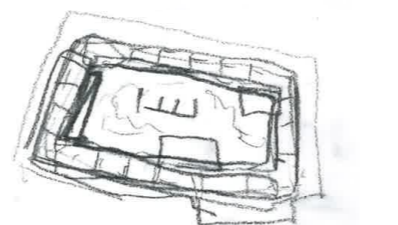
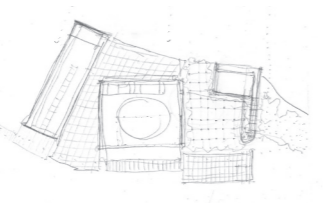
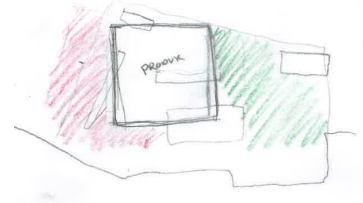
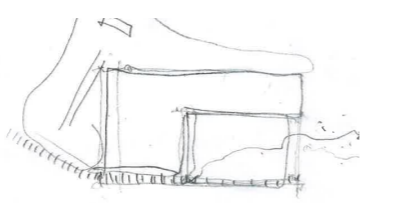
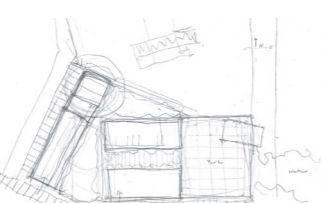
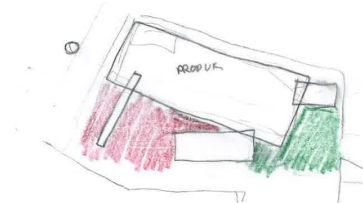
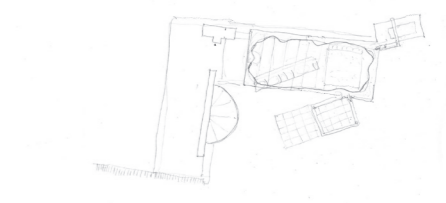
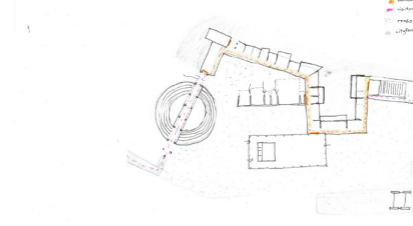
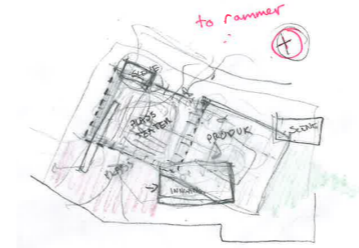
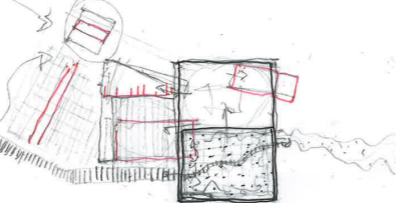
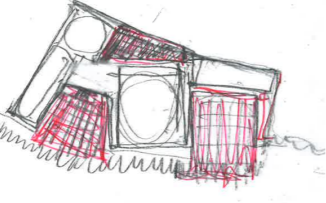
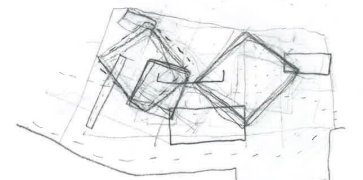
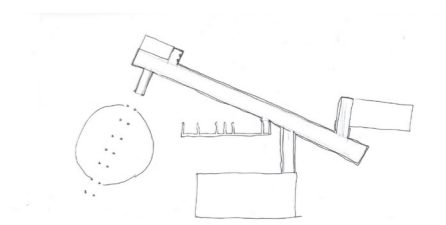
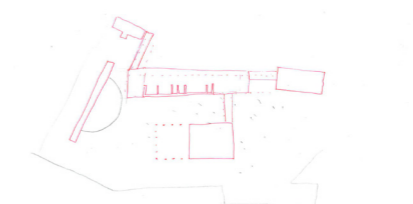
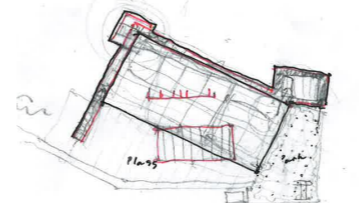
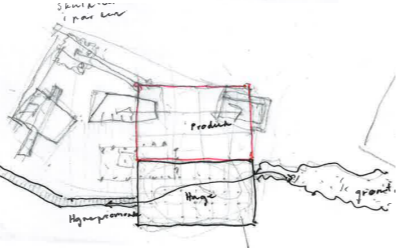
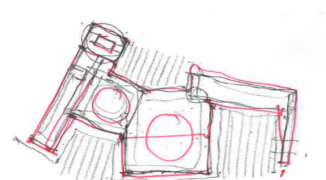
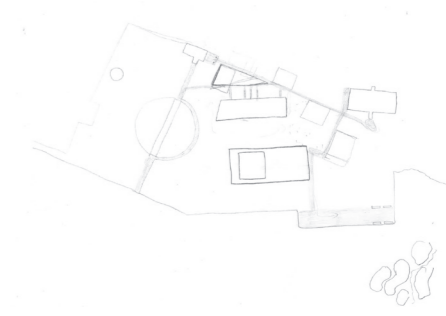
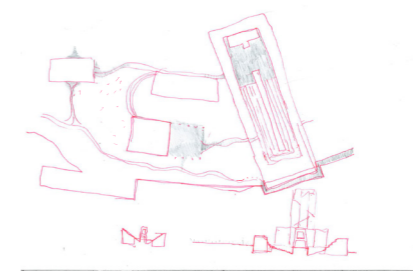
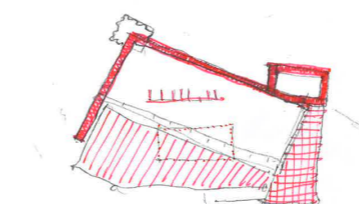
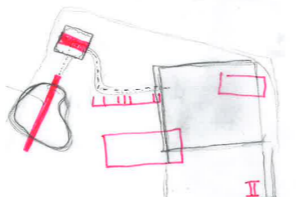
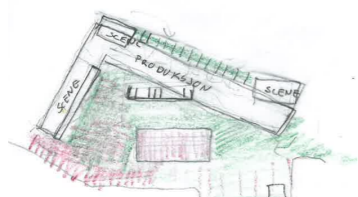
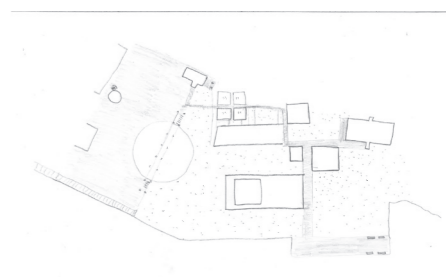
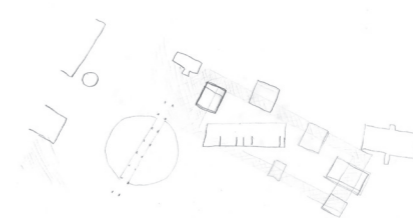
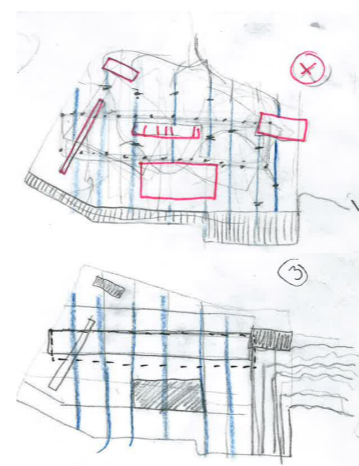
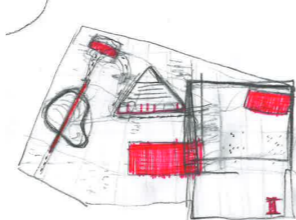
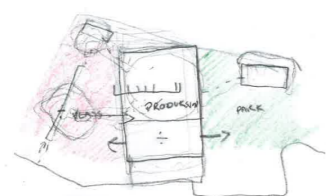
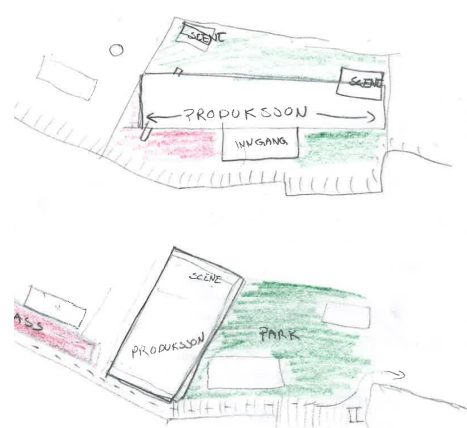
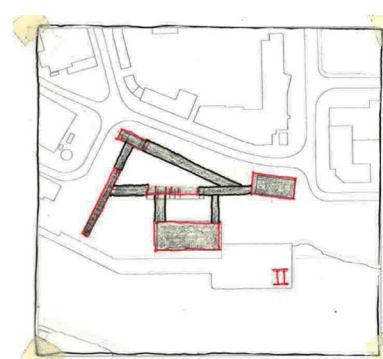
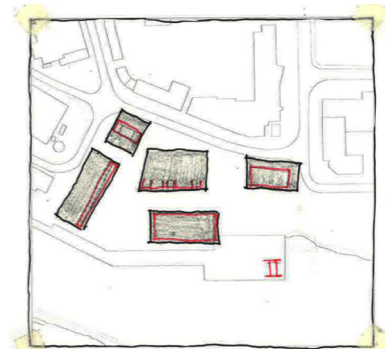
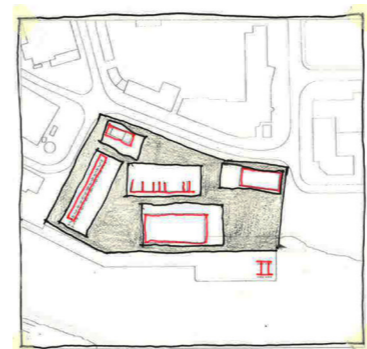
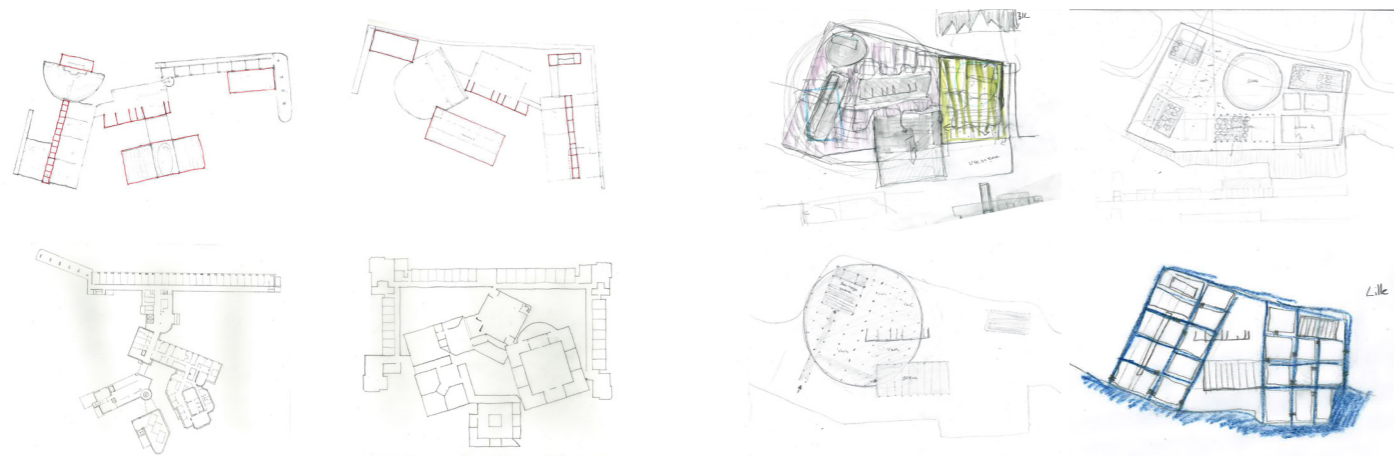
In the process we worked to find out how we could connect all the existing structures. Early in the process we discovered that the direct contact between production space(workshop) and stages was necessary.

We worked with building volumes to create this connection. At the same time this volume/volumes should create public spaces. Many different suggestion was made.

This semester we search for this answer: one big volume, several volumes that connecting the existing, one connecting floor, connecting roof.

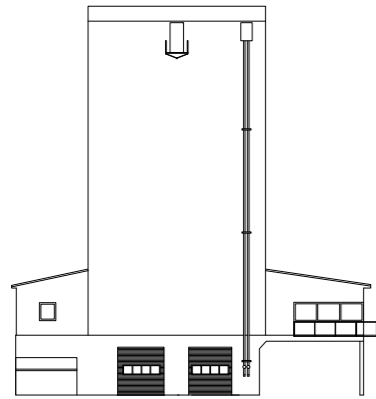
The process book shows the hole process.



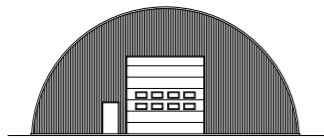


EXISTING STRUCTURES

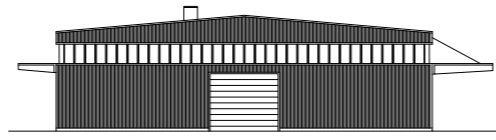




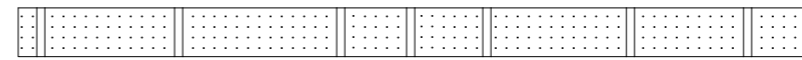
Concrete mixing tower:
The concrete is produced with different deposits and cement. Built in 1989. Tall silo building that works as a landmark in the urban situation.
Conservation value: High



Storage hall:
Used today for storage of steel elements. Built in 2006, red steel / metal warehouse. Stands out because of its characteristic shape.
Conservation value: Medium



Storage hall:
Currently used as warehouse for Tønsberg Spedisjon. One part of the building is used for offices, the other is used for storage. Built in 1971. The main structure is interesting to preserve.
Conservation value: Medium

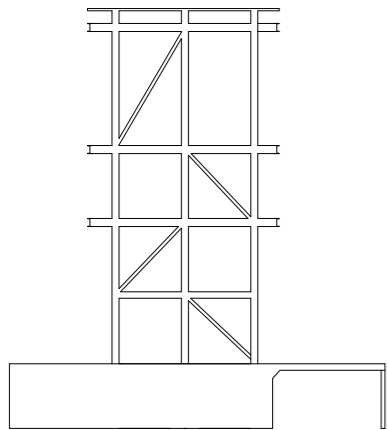


Sand storage:
Open concrete elements used as sand storage. Linear directional element.
Conservation value: Medium



Office:
Nordbetong AS use only a small part of the building, the rest is empty. Built in 1990. Painted red wood and brick building.
Conservation value: Low

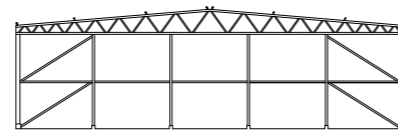
Crane track:
Standing from older industry (storage for coal), today the crane track is only used as a stand for conveyor belts for sand.
Built in 1939, the oldest element, interesting construction that is directional in the situation.
Conservation value: High



Preserved the steel structure and concrete base



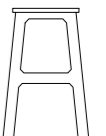
Preserved the steel structure



Preserved the steel structure



Preserved the concrete walls.



Preserved the concrete structure. Tear the house.

THE PROJECT



The area is surrounded by a nature reserve to the east (1), the canal bridge to the west, the board-walk (“Brygga”)(2) connected to the city, the canal to south) and the ring road with residential areas to north. Stenarmen location is central in terms of walking and cycling from both the city centre and surrounding landscape, arriving from the sea by boat, and driving from the canal bridge and along the ringroad.

1. EAST Presterødkilen (walk/bike)

Presterødkilen is a unique natural reserve with a 2km path for hiking through reeds and observationpoints for birds. Presterødkilen wetland system is a Ramsar-area* and important bird area with 250 different registered species.

Connection to site: The path ends in an asphalt parking space.

2. WEST “Brygga” boardwalk and city(walk/bike)

The boardwalk starts underneath the canal bridge and continues along the entire canal. Along the boardwalk you find the marina, public places, bars, restaurants and hotels. “Brygga” is an important part of the city and creates contact with the canal and sea.

Through our project we make a new connection with the boardwalk to the city and the path to the nature. In the center of Stenarmen we create a new public space.: The theatre park.



THE TASK

Our thesis have been to design a group of theatres with different spatial qualities in the harbour and industrial area of Tønsberg. The project is based on existing industrial buildings that we find both an architectural and historical value in preserving. The ambition has been to provide a new spatial quality among former industrial buildings and preserve the historical character of the place.

The project creates a complex and different theatre experience. Functions that usually are hidden in traditional theatres such as workshops for theatre production are exposed.

By transforming the existing industry elements to theatre stages and adding new structures for theatre productions, we create a theatre park. The project connects the surrounding context by making a public waterfront and creates a border to the park.

Stensarmen is one of several areas in Tønsberg which is selected as a potential area for future urban development. We consider our project to be the first construction phase in this area.

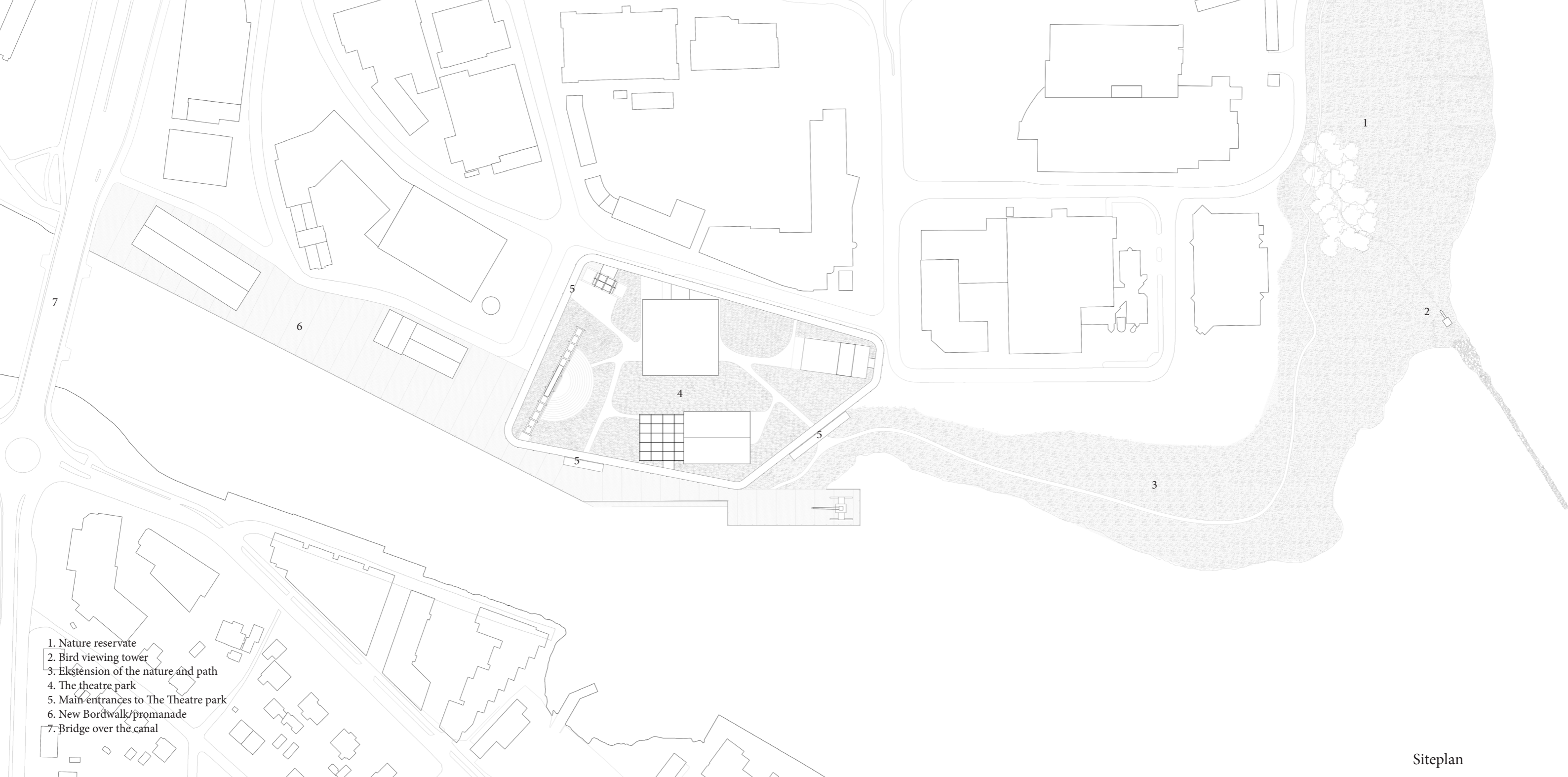
THE THEATRE PARK

The theatre park is a park with freestanding stages inside a defined park. The park in itself create a new public space for the city.

Organization of the project:

The stages is placed in the existing structures(transformed). The workshop is a new structure. From the workshop we have created a rail for transporting props to all the different stages in the park. The rail with its own structure and roof creates a light border between the park and the surrounding context.





- 1. Nature reservate
- 2. Bird viewing tower
- 3. Ekstension of the nature and path
- 4. The theatre park
- 5. Main entrances to The Theatre park
- 6. New Bordwalk/promanade
- 7. Bridge over the canal

Siteplan

We consider our project to be the first construction phase in the development of the area. The future urban development will meet and relate our project. Diagrams shows how this could be done.



The project with todays situation. This is the first construction phase in the area

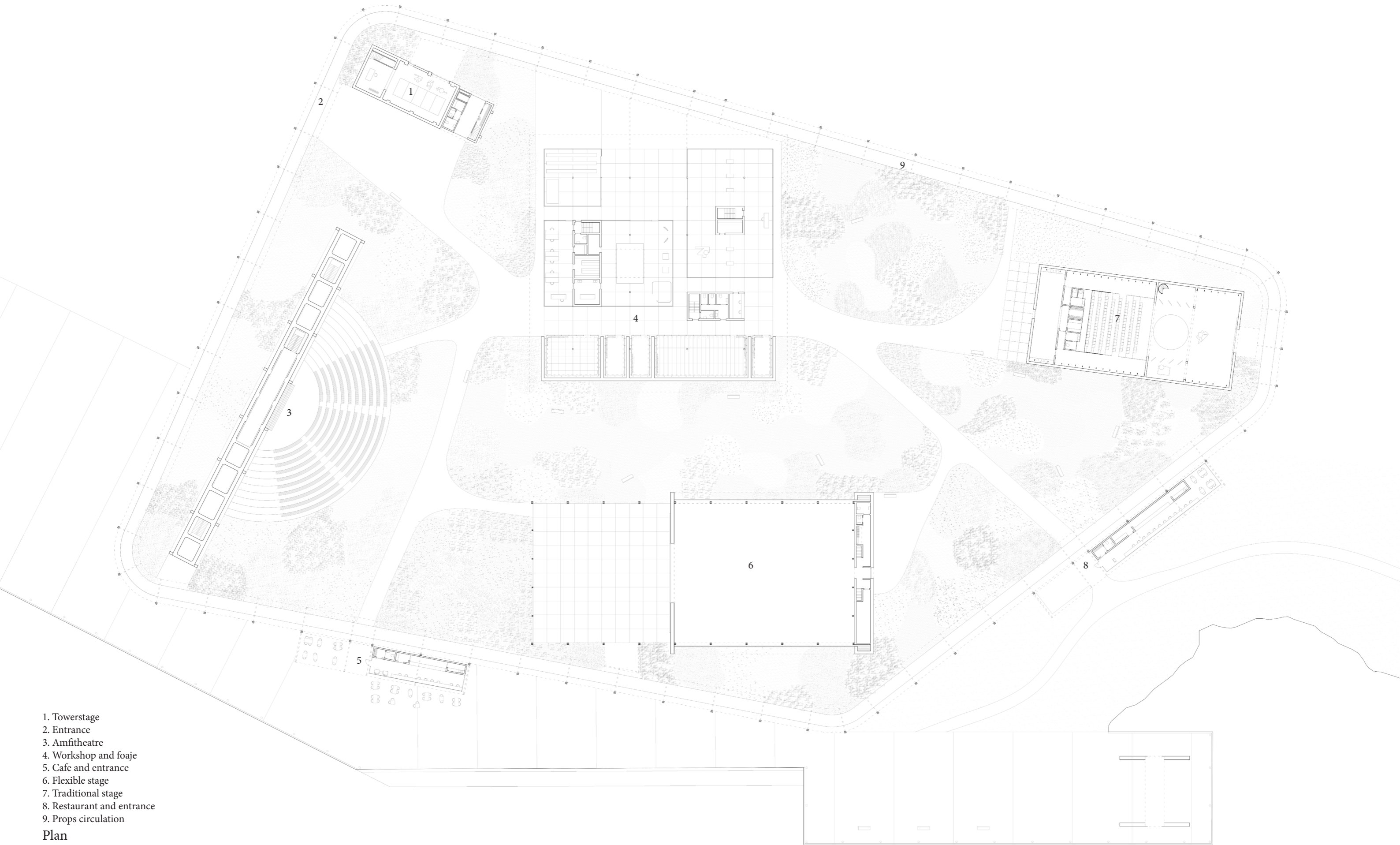


1. New development with existing roadnet

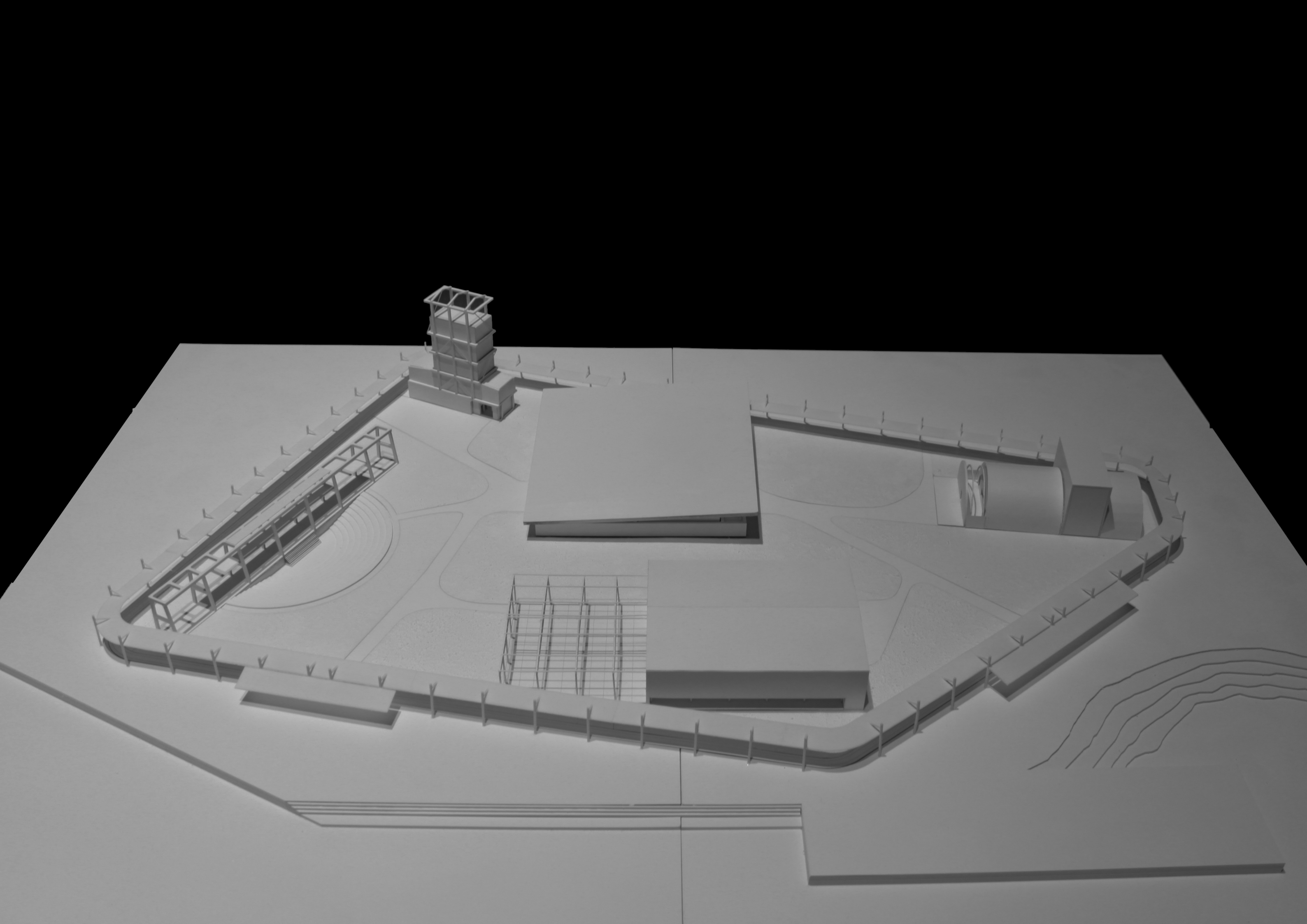


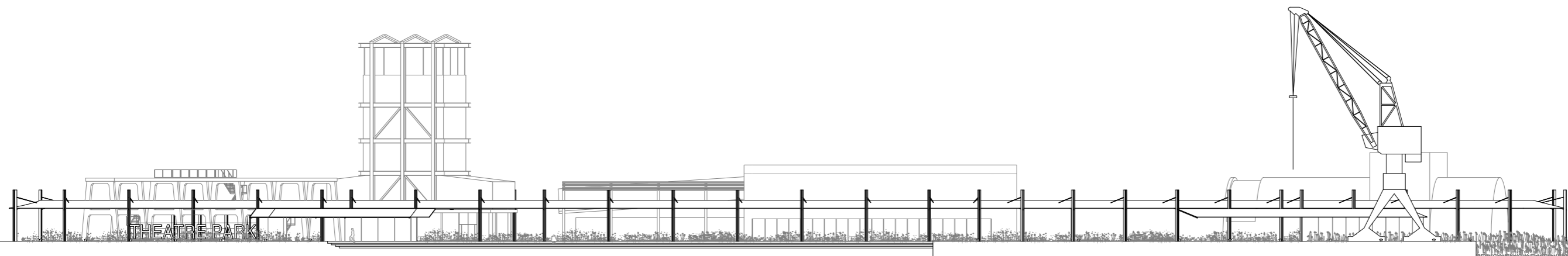
2. In the later construction phase the New development can meet the project with a new grid that follows the area in north



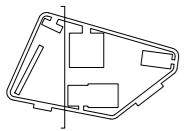


- 1. Towerstage
 - 2. Entrance
 - 3. Amfitheatre
 - 4. Workshop and foaje
 - 5. Cafe and entrance
 - 6. Flexible stage
 - 7. Traditional stage
 - 8. Restaurant and entrance
 - 9. Props circulation
- Plan





THEATRE PARK



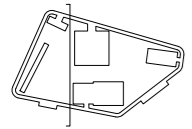
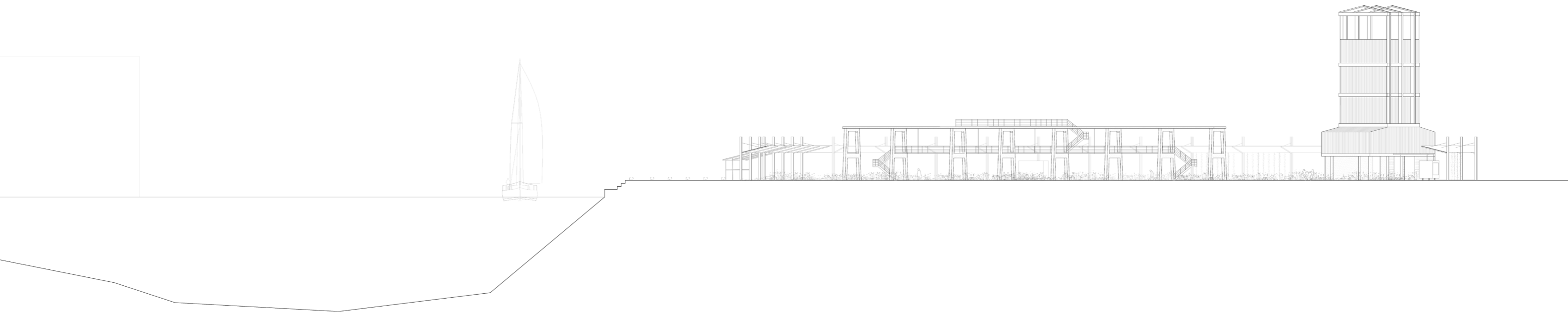
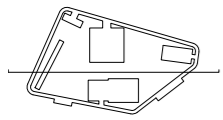
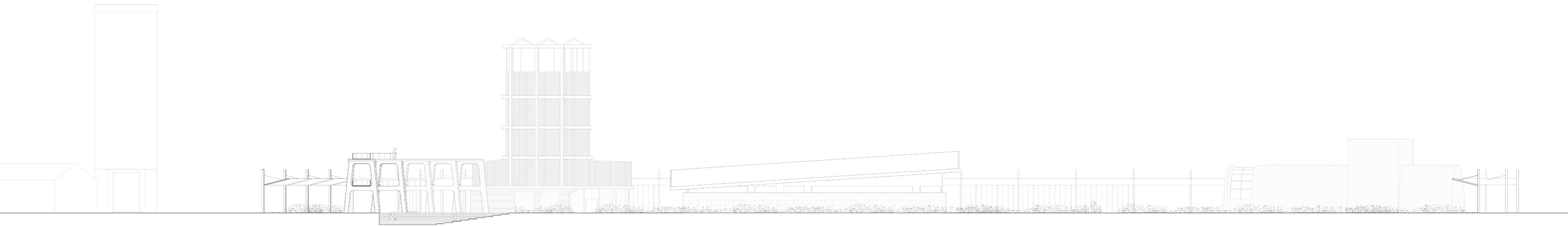
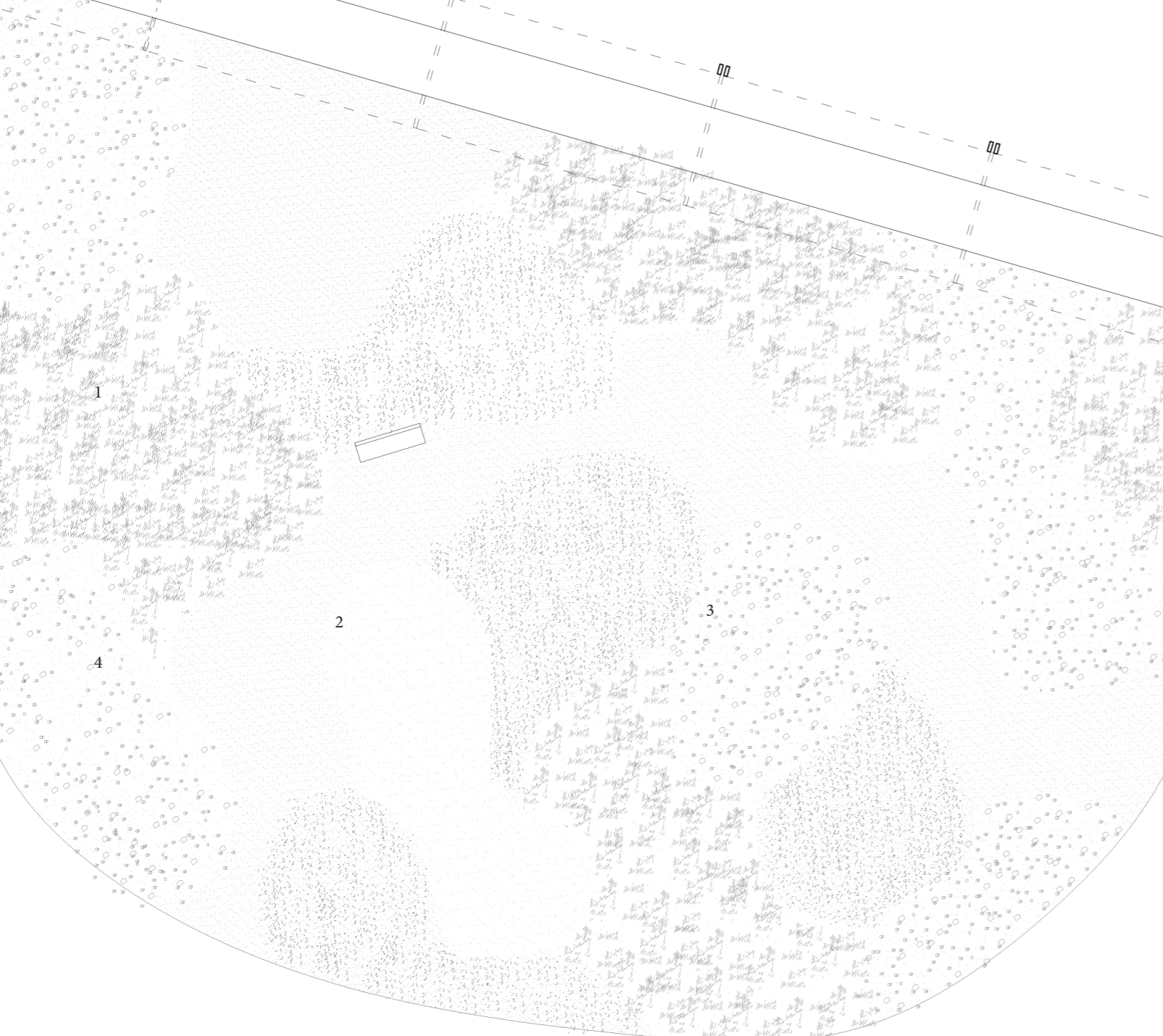




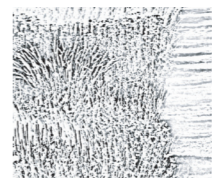
Illustration shows the project seen from the inside of the park. High reeds vegetation define the path and different spaces in the park.



Illustration shows the project seen from the harborfront with the connection to the canal
The new broadwalk/promenade is in concrete.



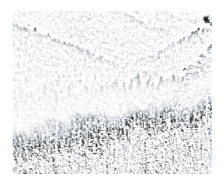
1



2

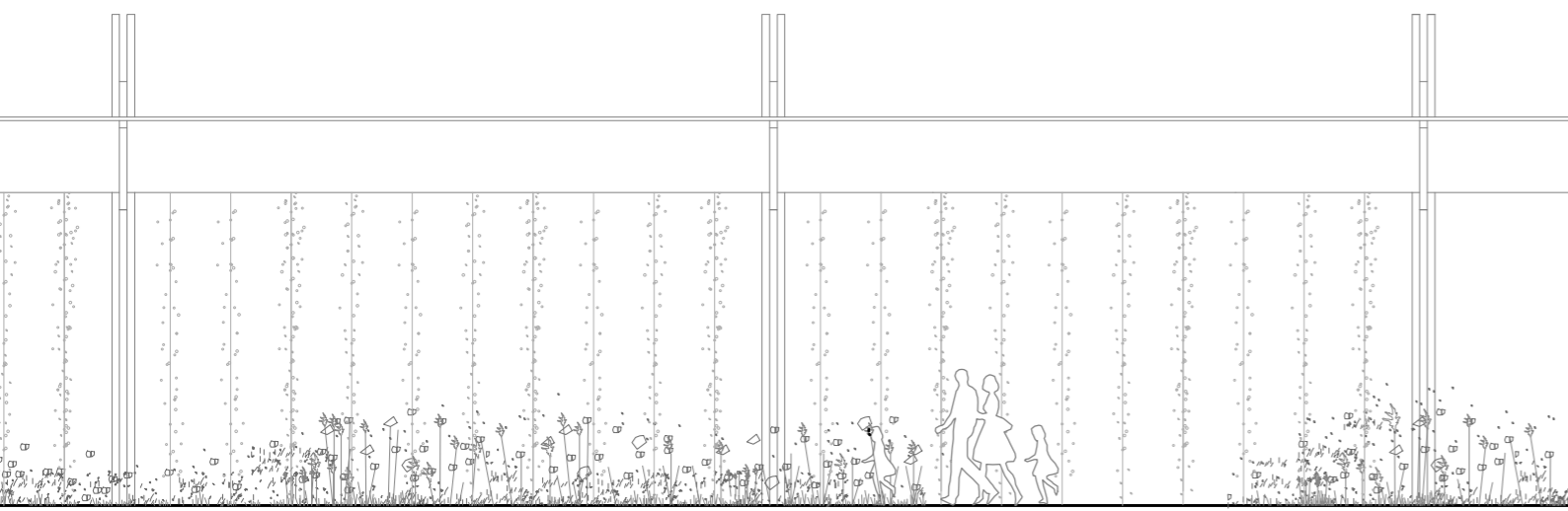


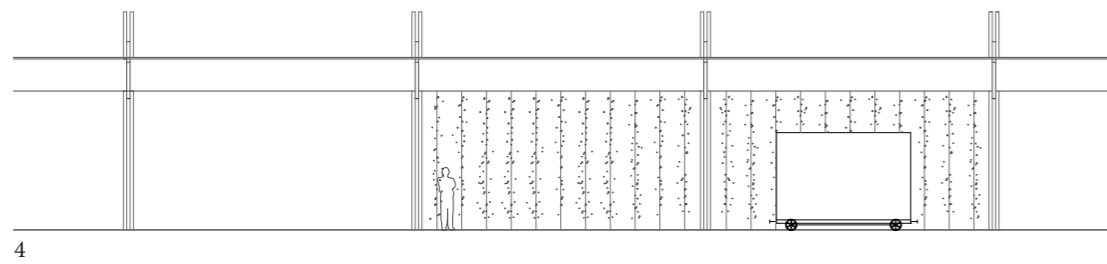
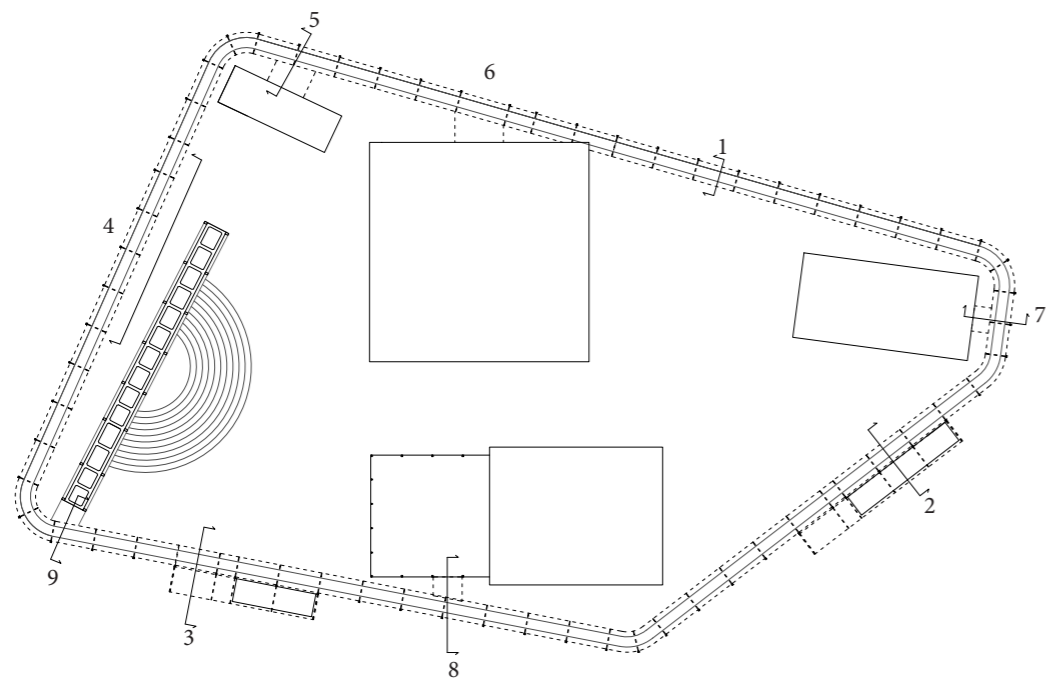
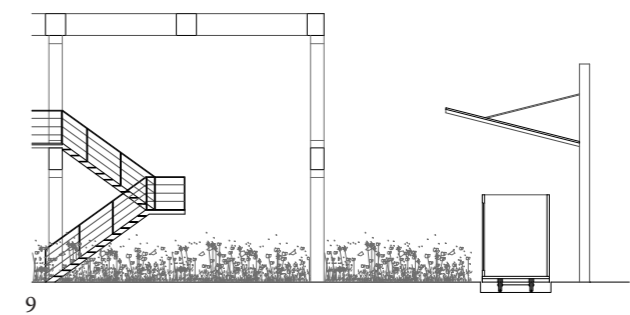
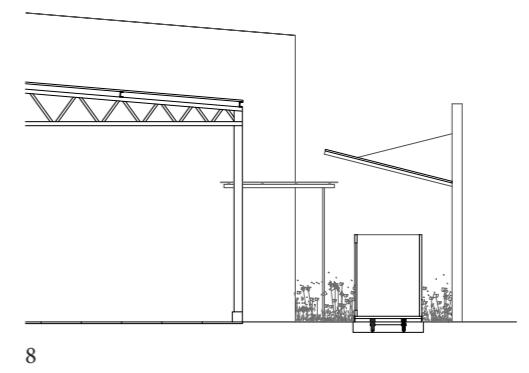
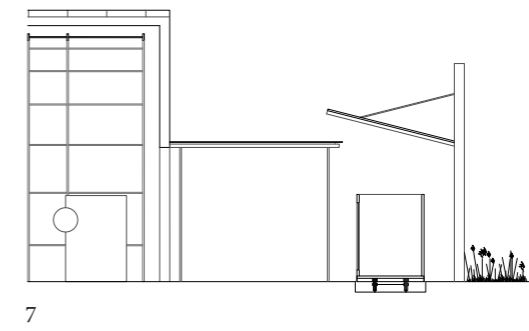
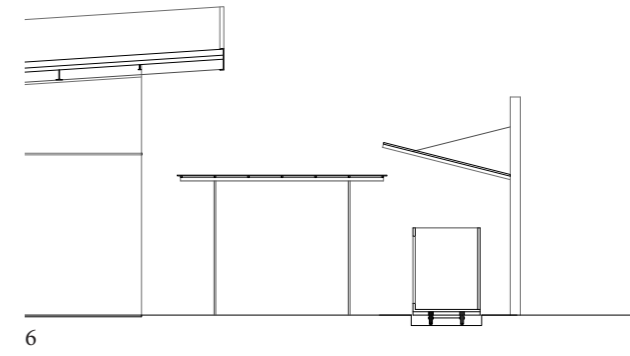
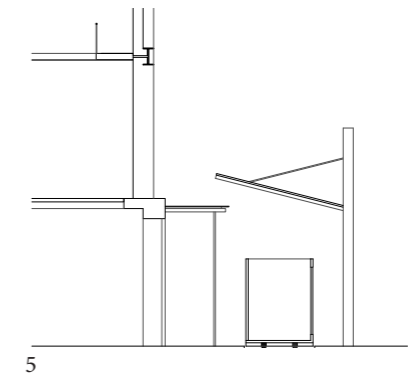
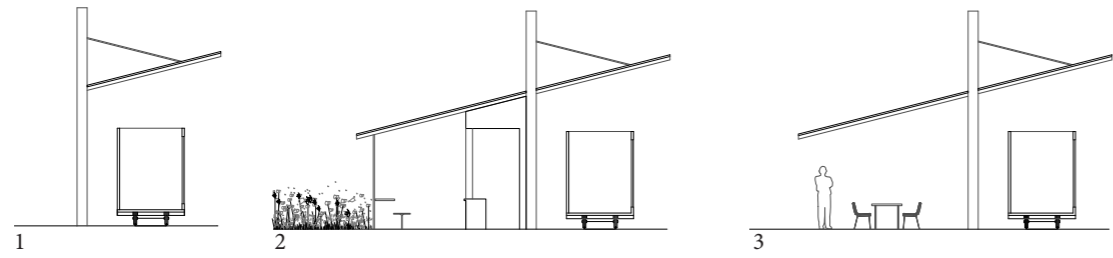
3



4

- 1. local reeds
- 2. new reed stypes
- 3. high and low grass types
- 4. meadow



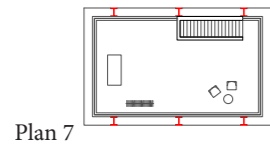
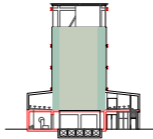
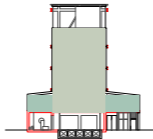




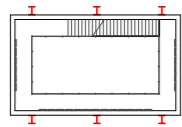
The tower
 The existing structure (a old concrete mixing tower) is exposed on the outside. The new metal plate facade is hanging from the old steel structure.

1. The stage is a transverse stage with a high stagetower.
2. We have also crated seating in the gallery so the theatre performance can be done on a extreme verticality.

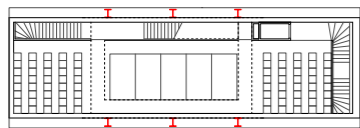
Seats: 80



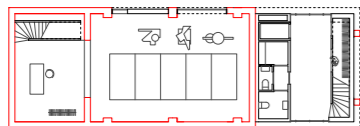
Plan 7



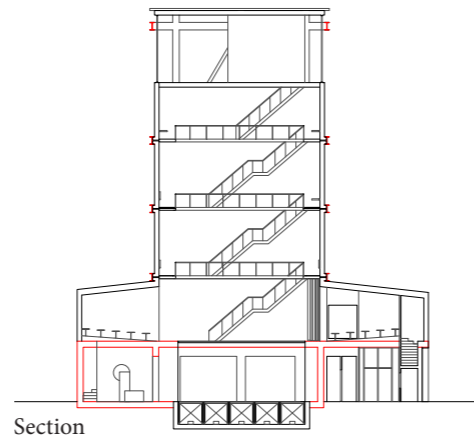
Plan 3-6



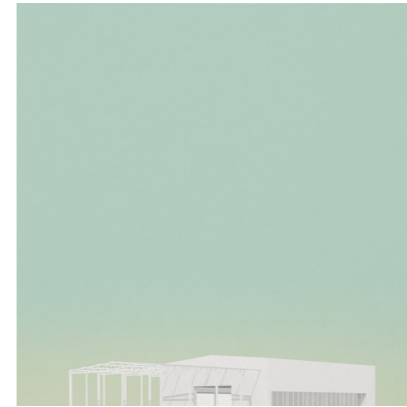
Plan 2



Plan 1



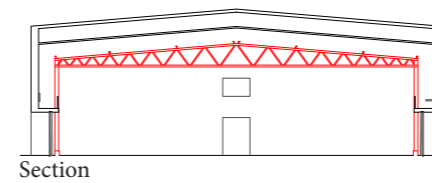
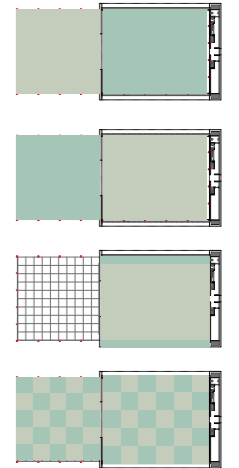
Section



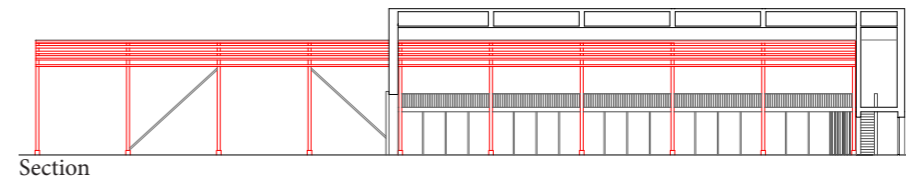
The flexible stage
 The existing structure (a old storage hall) is exposed on the inside and free from the new structure. We keep the old structure as a rig for theatre use (light, technical installations, props+).

1. The stage is a flexible stage. The half of the existing structure is exposed on the outside with a thin glass roof. Both the inside and outside space can be used for theatre performance, but the outside space is also a public space in the park.

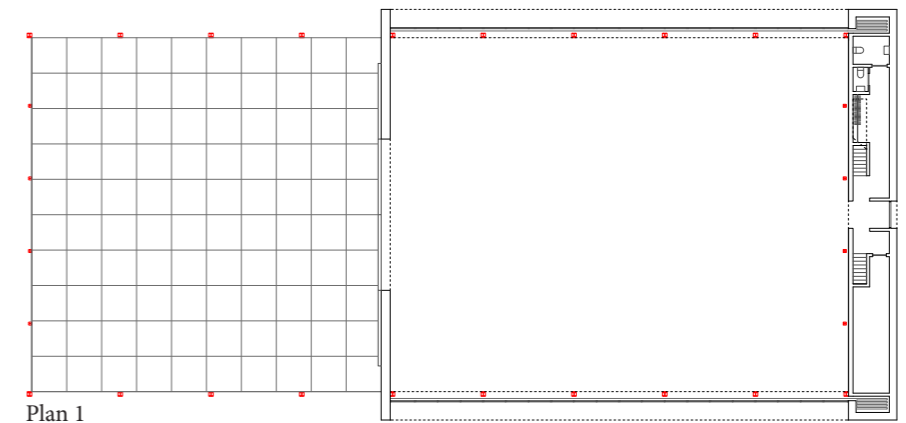
Seats: 50-400



Section



Section

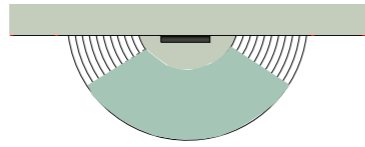


Plan 1

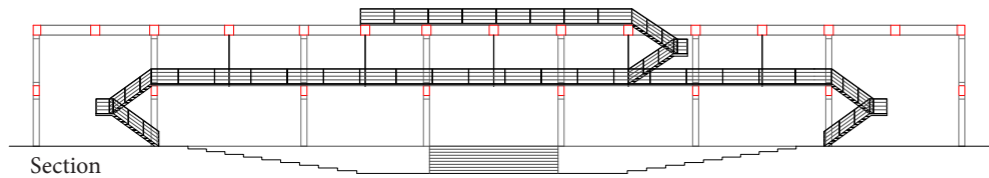


The Amphitheatre
Thin metal floors is layed inside the existing structure(crane track):. A new amphitheatre is made.

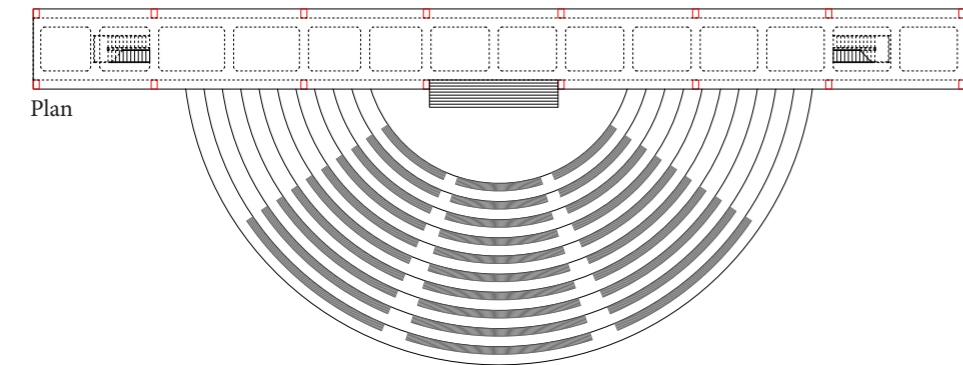
Seats: 400



Section



Section



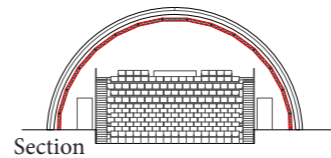
Plan



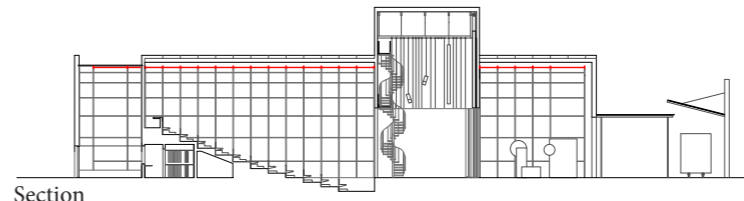
The traditional stage
The existing structure(a old storage hall) is exposed on the inside and free from the new structure. We keep the old structure as a rig for light and technical installations.

1. The stage is a end stage.

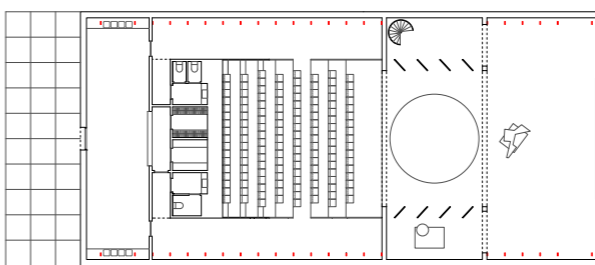
Seats: 180



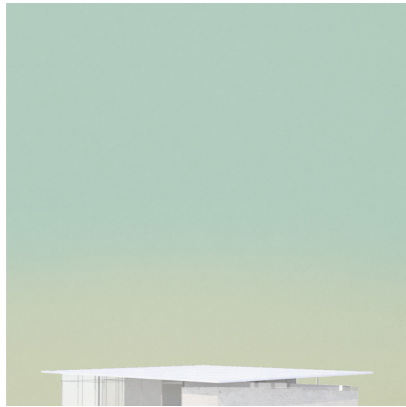
Section



Section



Plan

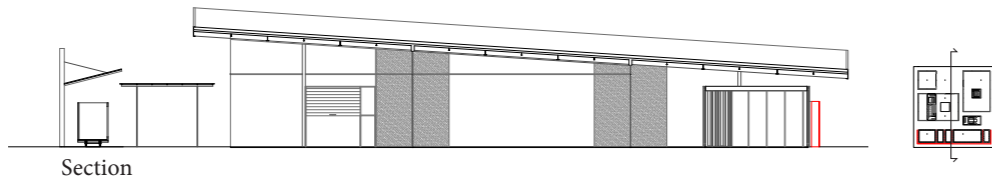


The workshop
 A new steel structure caring a tilted roof. Under the roof we created boxes of rooms. The visitor can then look into the production.

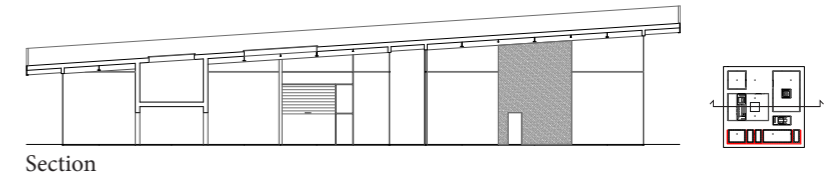
The ticketoffice is placed in the workshop area to get the visitors to see the production.

Actress wardrobe, administration and practicing rooms are also placed under the roof.

The existing structure(the old sand storage) is a free structure under the roof. The new building follows the length of the sand storage.

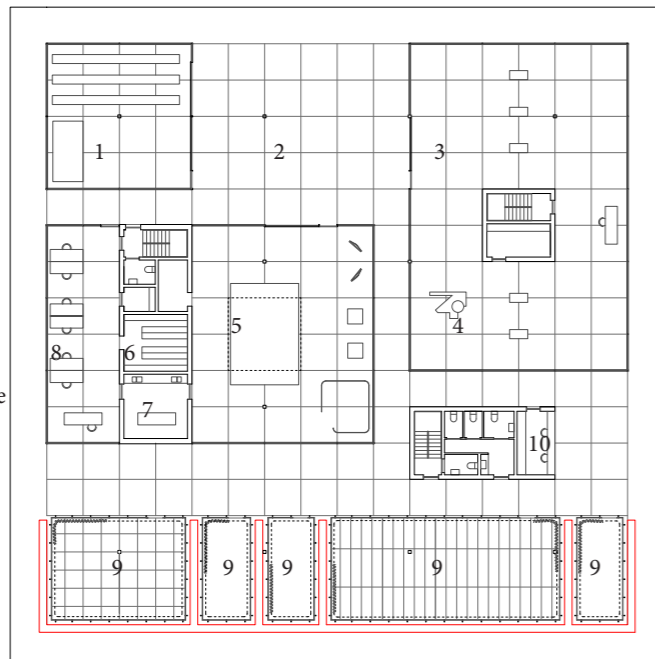


Section



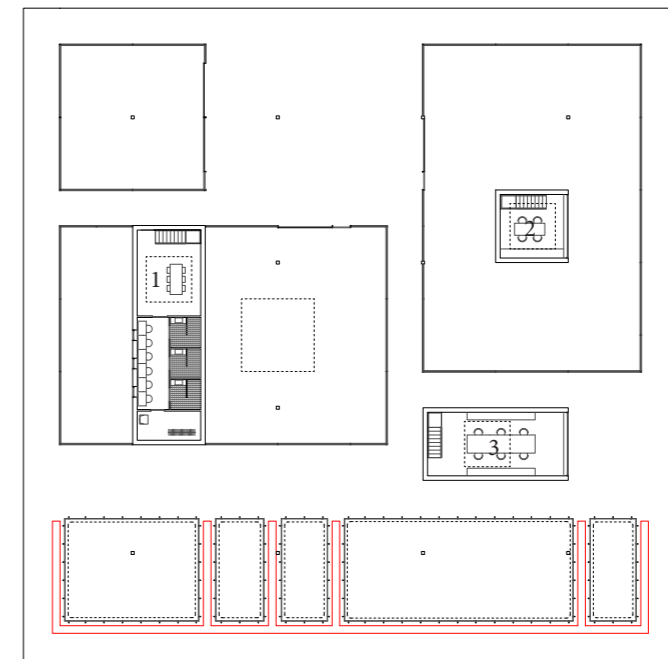
Section

- 1. Lager/Storage
- 2. Montasje/Mounting props outside
- 3. Snekker/carpentry
- 4. Smie/forge
- 5. Malersal/painting room
- 6. Tekstillager/ fabric
- 7. Patineringsrom/
- 8. Tekstil/ textile
- 9. Øvesale/ practicing room
- 10. Billettluke/ticket



Plan 1

- 1. Skuspiller/ Actress wardrobe
- 2. Kjøkken og møterom/Kitchen-meetingroom
- 3. Administration /Administration



Plan 2



THE FUTURE OF DESIGN

