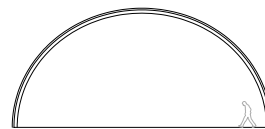
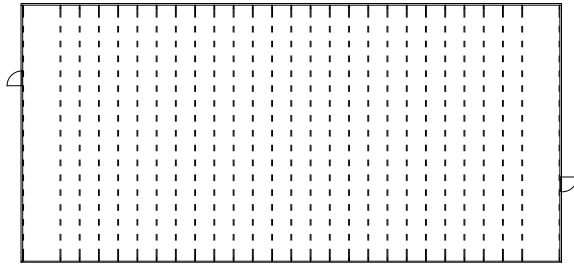


Stages in the existing strukturs



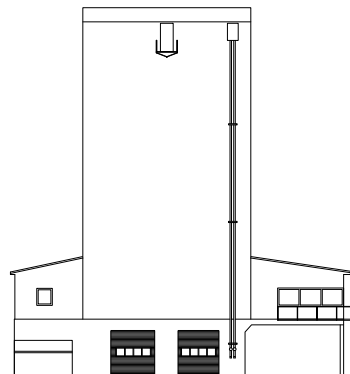
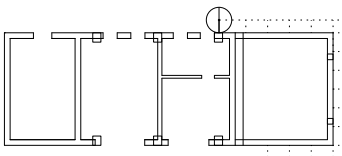
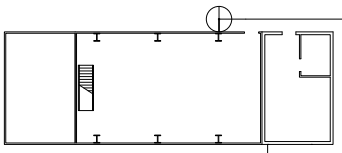
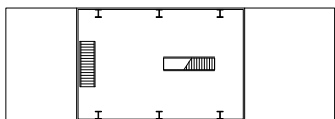
Fixed stage:

Area (ground plan): 500m²

Length: 32,5m

Width: 15,5m

Max high: 7,1m



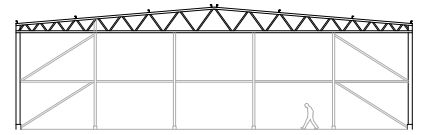
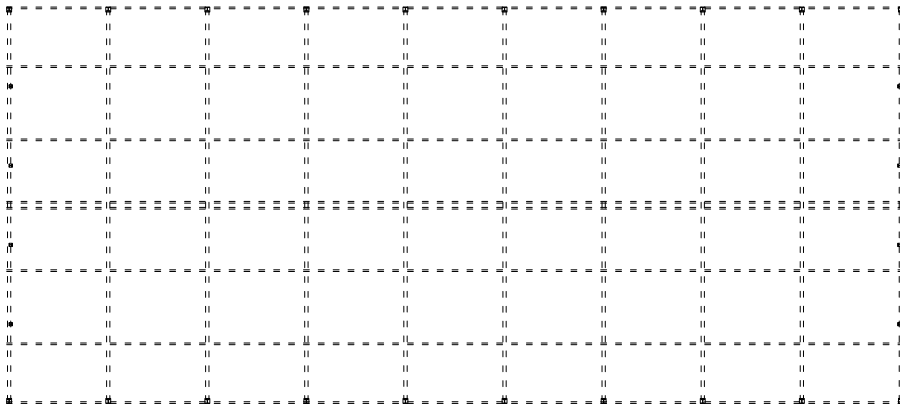
Fixed stage:

Area (ground plan): 183,3m²

Length: 23,2m

Width: 7,9m

Max high: 26m



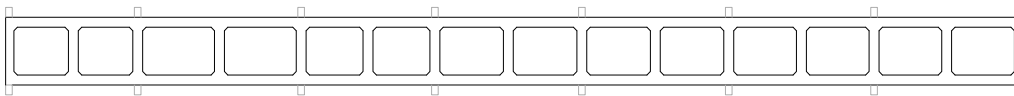
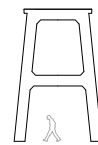
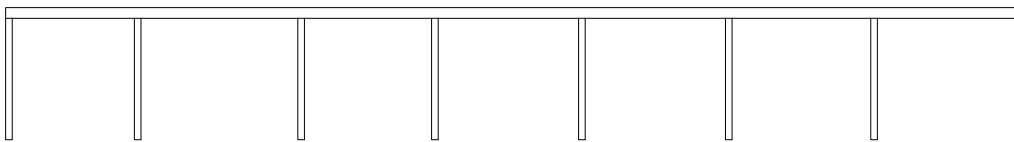
Flexible stage:

Area (ground plan): 1303m²

Length: 54,3m

Width: 24m

Max high: 7,5m



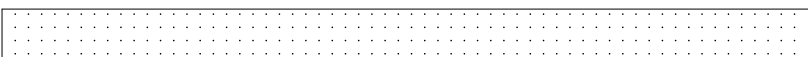
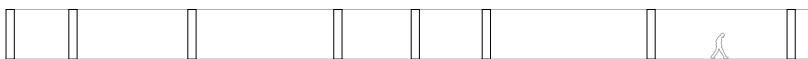
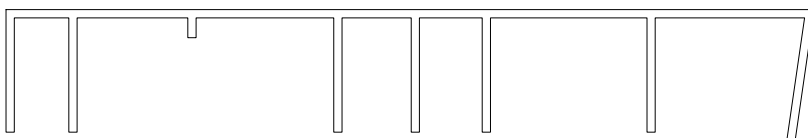
Outdoor stage:

Area (ground plan): 326,5m²

Length: 61,6m

Width: 5,3m

Max high: 8m



Rehearsal stage:

Area (ground plan): 333m²

Length: 45,1m

Width: 7,9m

Max high: 3m



