

n e w b o d y

a c h u r c h i n h o n g k o n g

Diploma 2017
Chan Hiu Yeung Amos
Supervisor
Rolf Gerstlauer



Kowloon City Christians' Church and Christ's College, 1954

a.

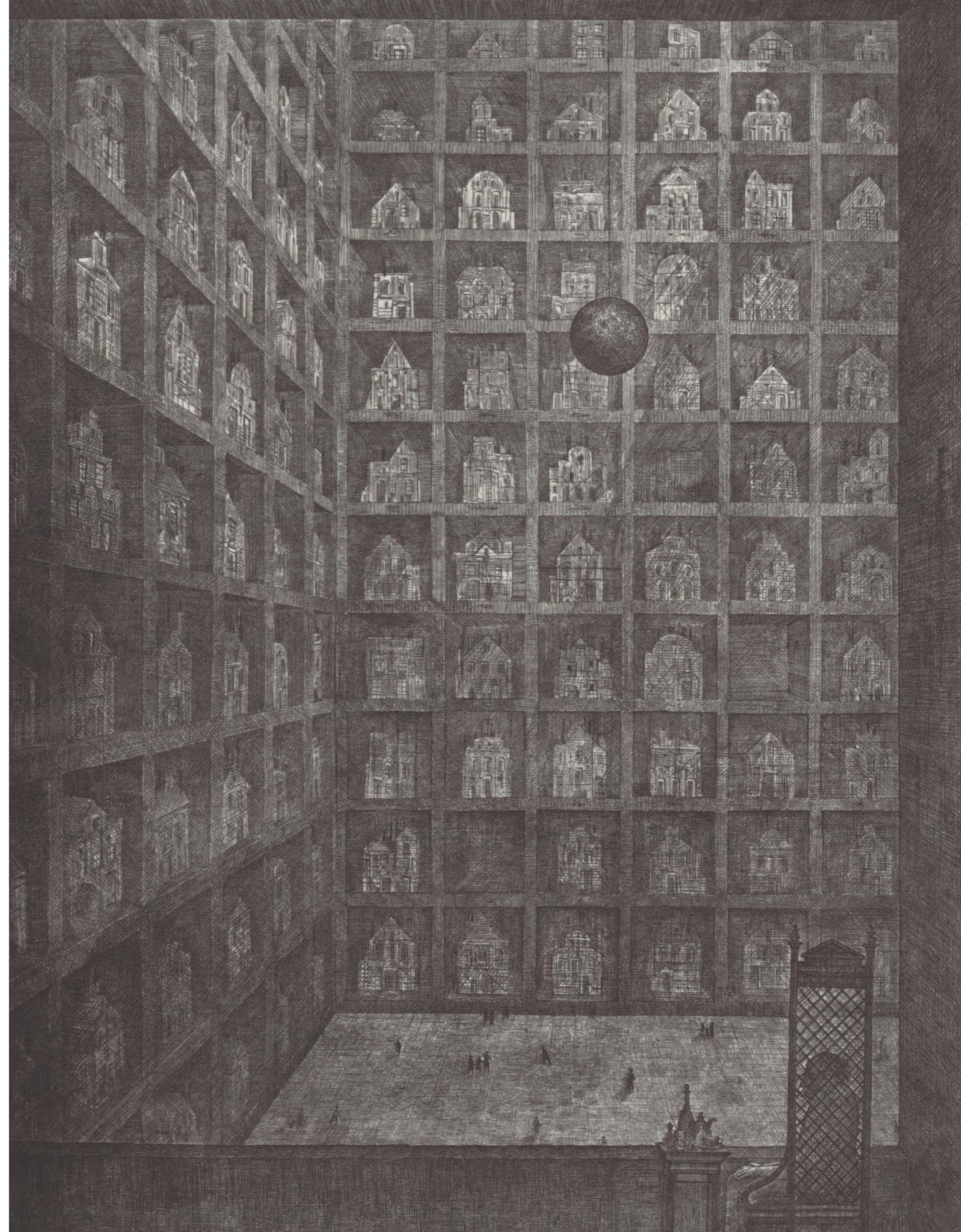
It would be senseless for the author to try to convince the reader that his characters once actually lived. They were not born of a mother's womb; they were born of a stimulating phrase or two or from a basic situation. Tomas was born of the saying "Einmal ist keinmal". Tereza was born of the rumbling of a stomach.'
by Milan Kundera

Using literature, metaphors, 'a stimulating phrase or two or from a basic situation' to create a space, an architectural language or a typology, and project these to an practical architecture program.

b.

'A House dies twice- the first time when people leave it... The second time finally when it's destroyed...'
by Brodsky & Utkin

The church is going to die not because people leave it, but simply because it is getting old and a new body is needed. The project is to create a new body for the church. The memory, history and the spirit will be project on the new body. These will generate an new architecture, and the new architecture will be a memorial of itself.



Columbarium Habitabile 1989/90 by Brodsky & Utkin



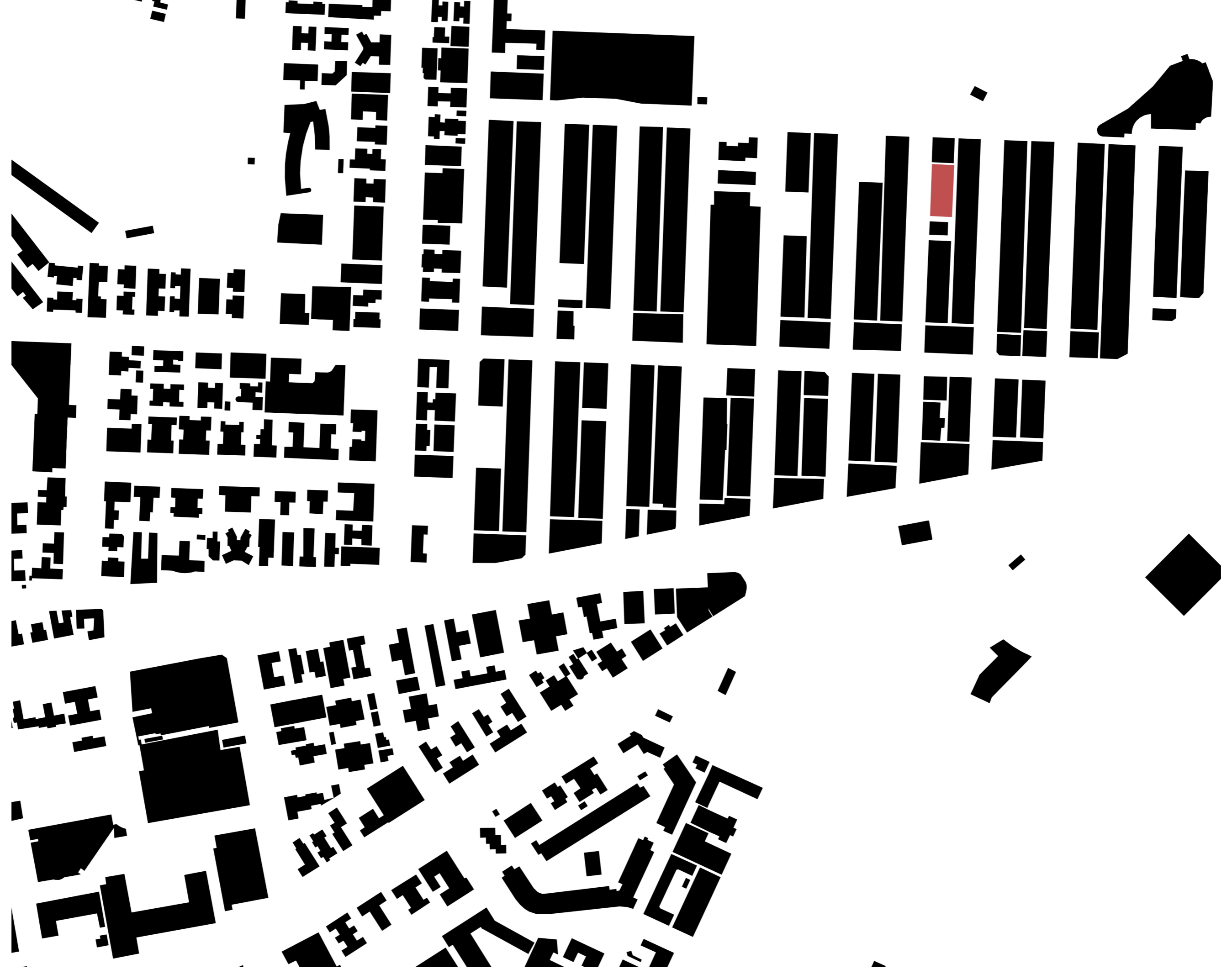
The Kowloon Walled City by Greg Girard



Aircraft landing at Kai Tak airport, Kowloon City in the '90s



Site Map 1:5000

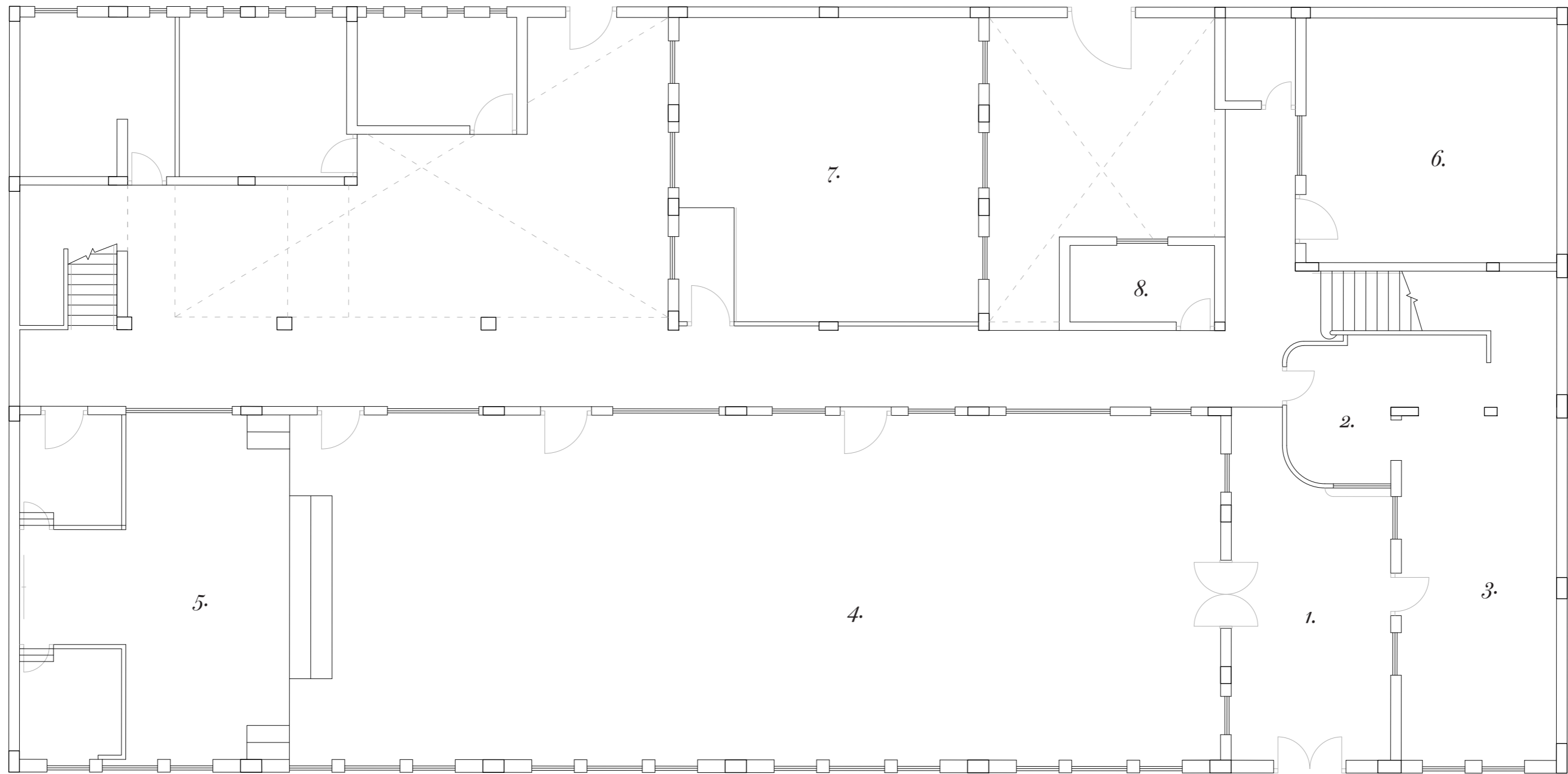


Site Map 1:2500









1. Entrance Hall
2. Reception

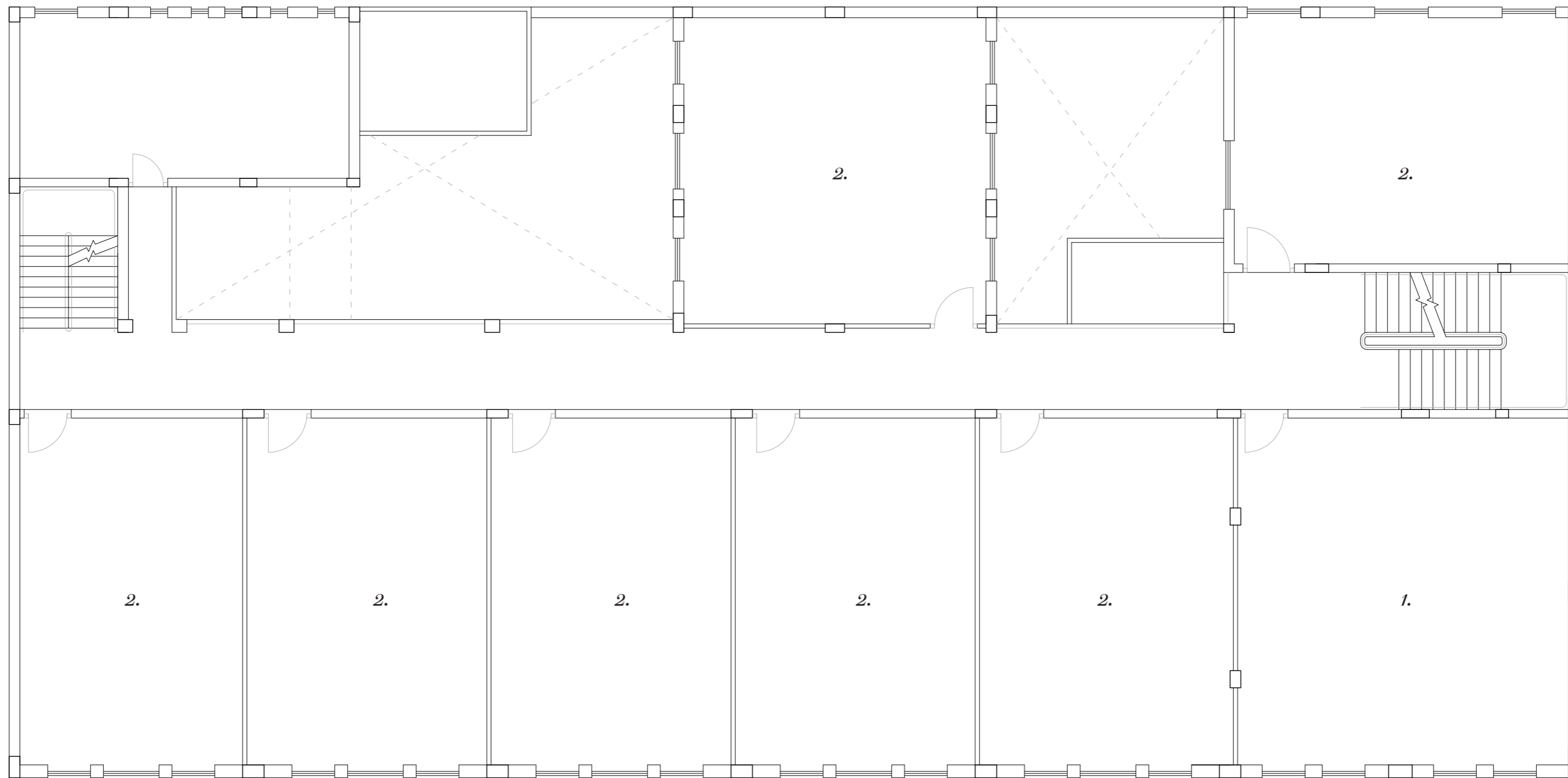
3. Cornerstone Office
4. Church

5. Altar/Stage
6. Choir Room

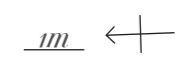
7. Group Room
8. Prayer Room

1m ←

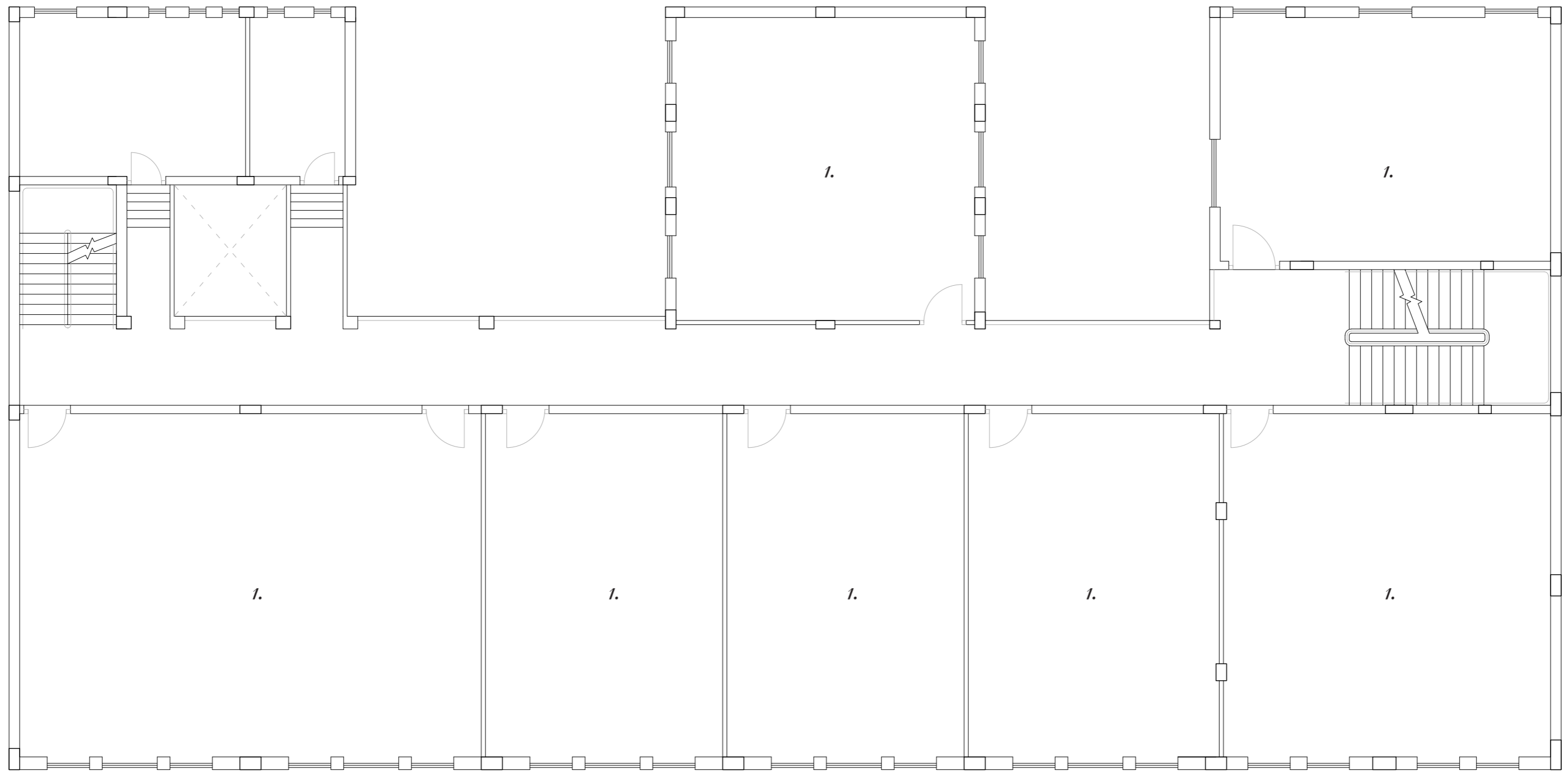
Old Body
Ground Floor Plan 1:100



1. Church Office
2. Classroom



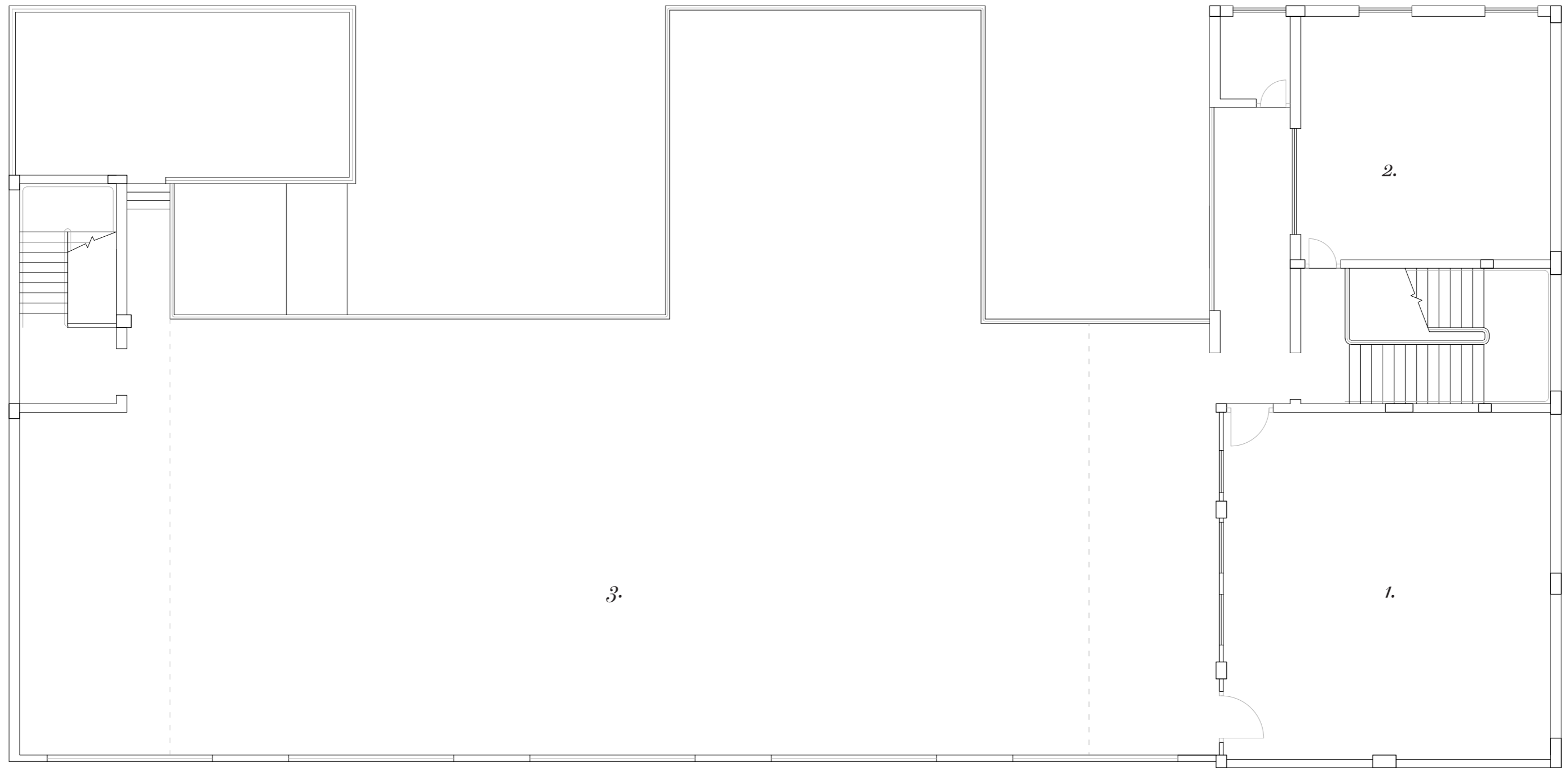
Old Body
1/f Plan 1:100



1. Classroom

mm ← +

Old Body
2/f Plan 1:100

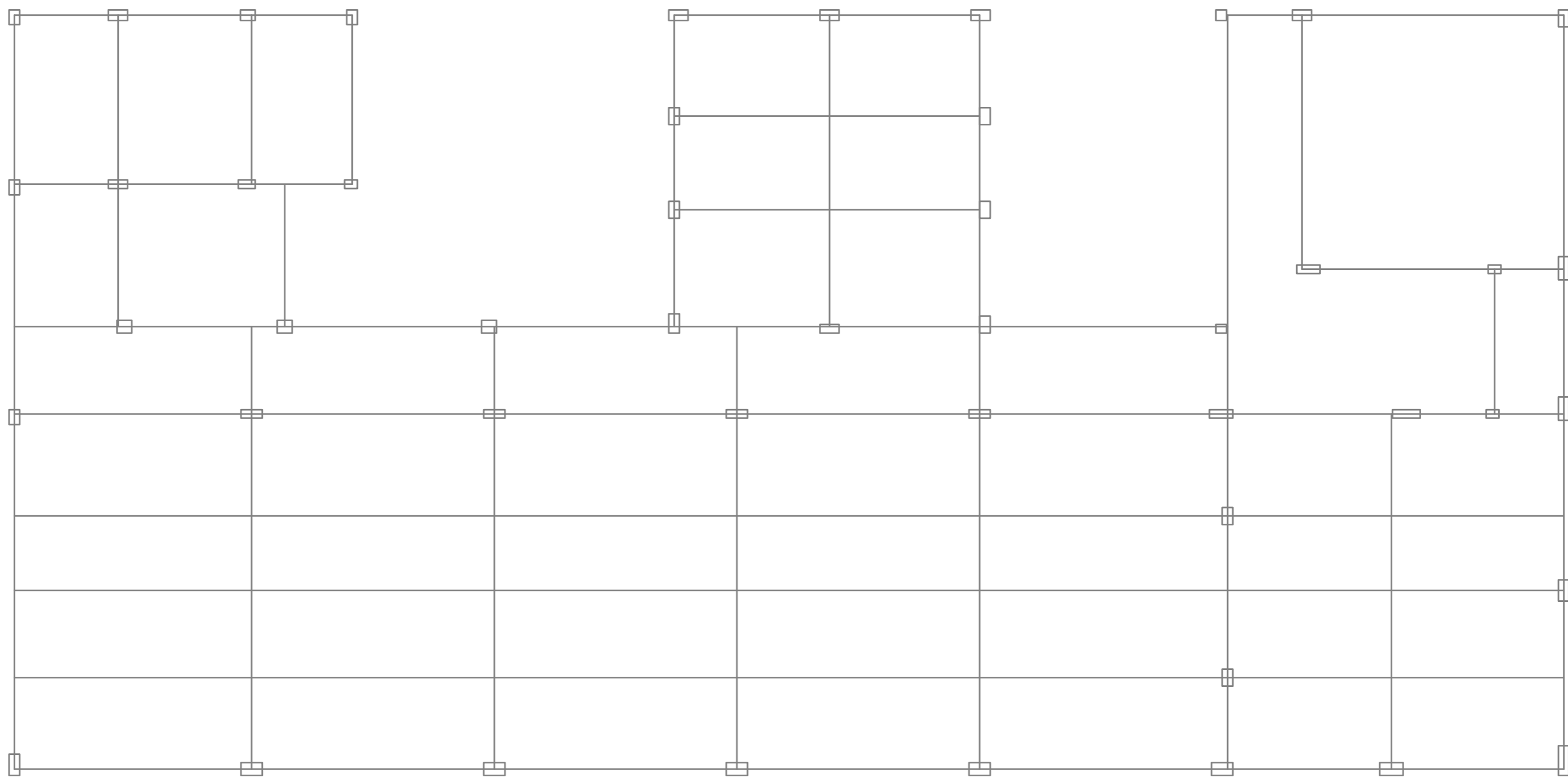


1. Classroom
2. Library

3. Basketball Court

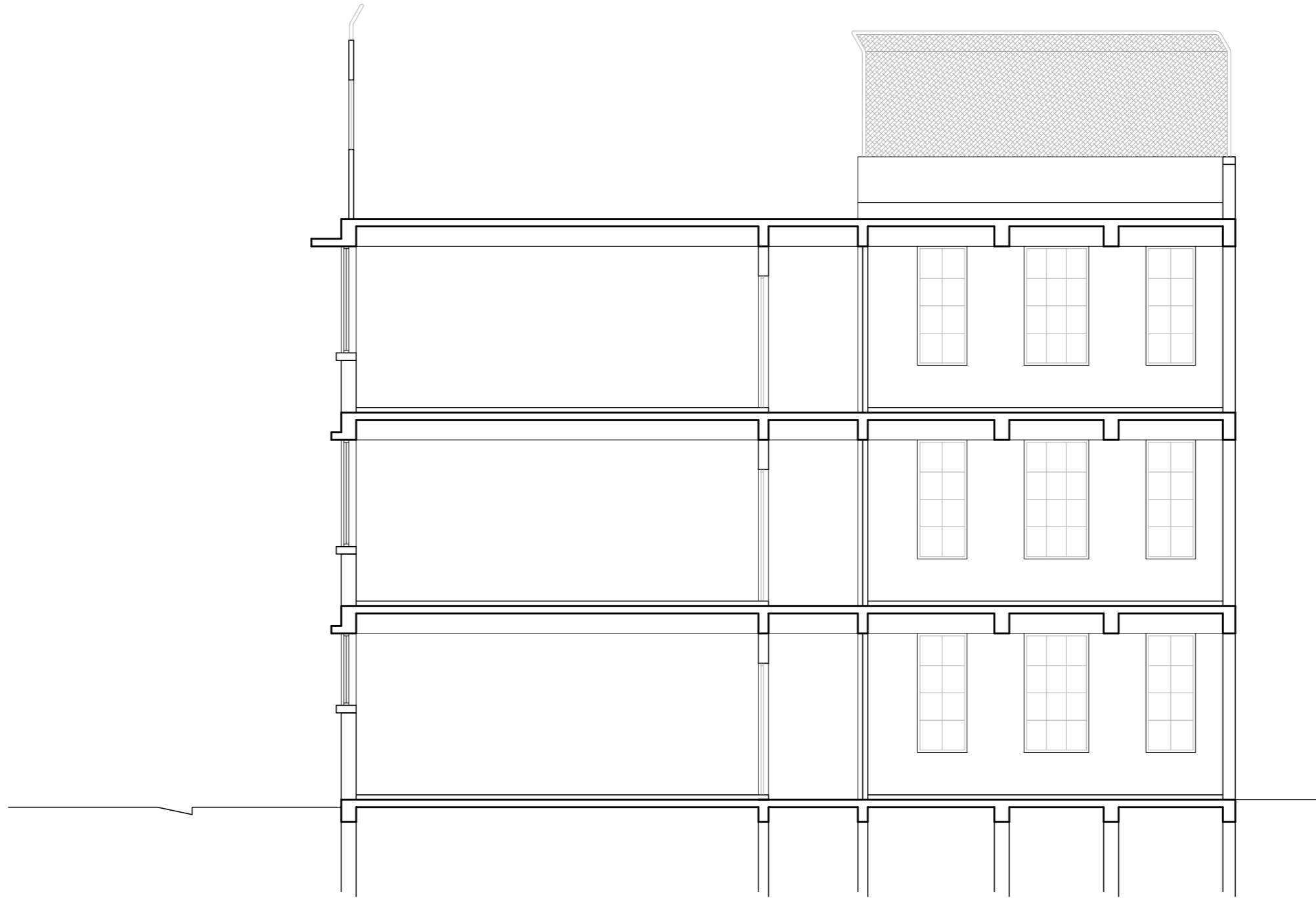
nm ←

Old Body
Roof Plan 1:100



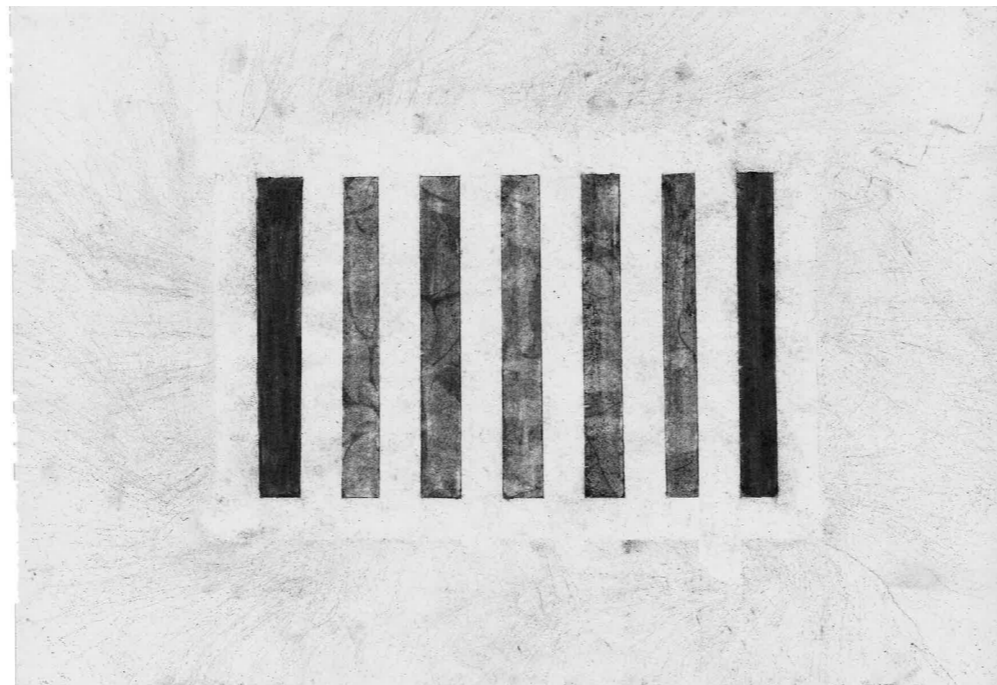
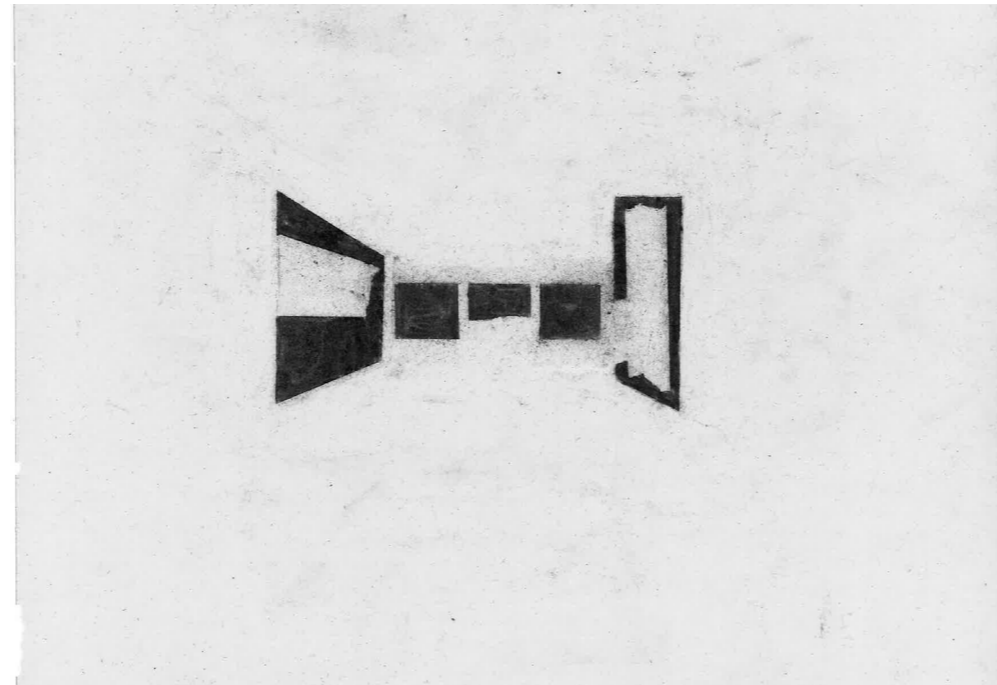
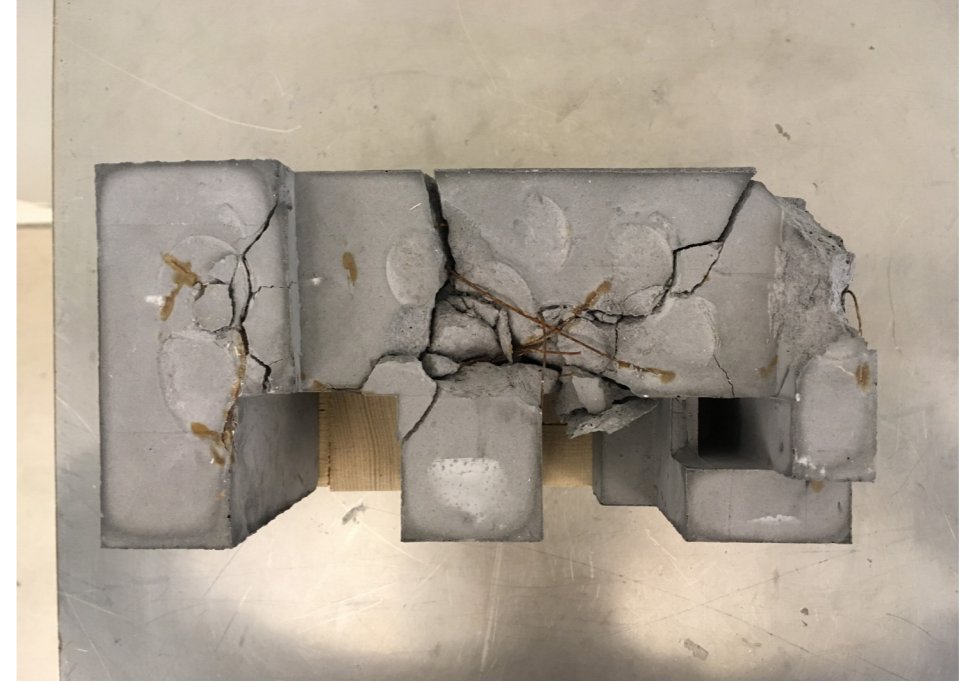
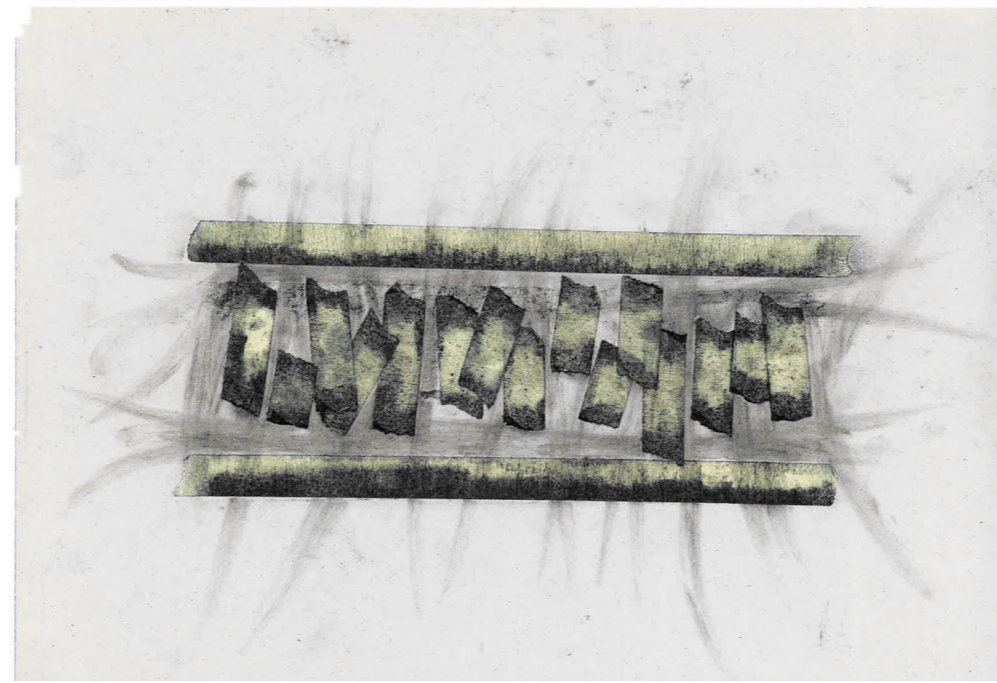
m ← +

*Old Body
Structure Grid 1:100*

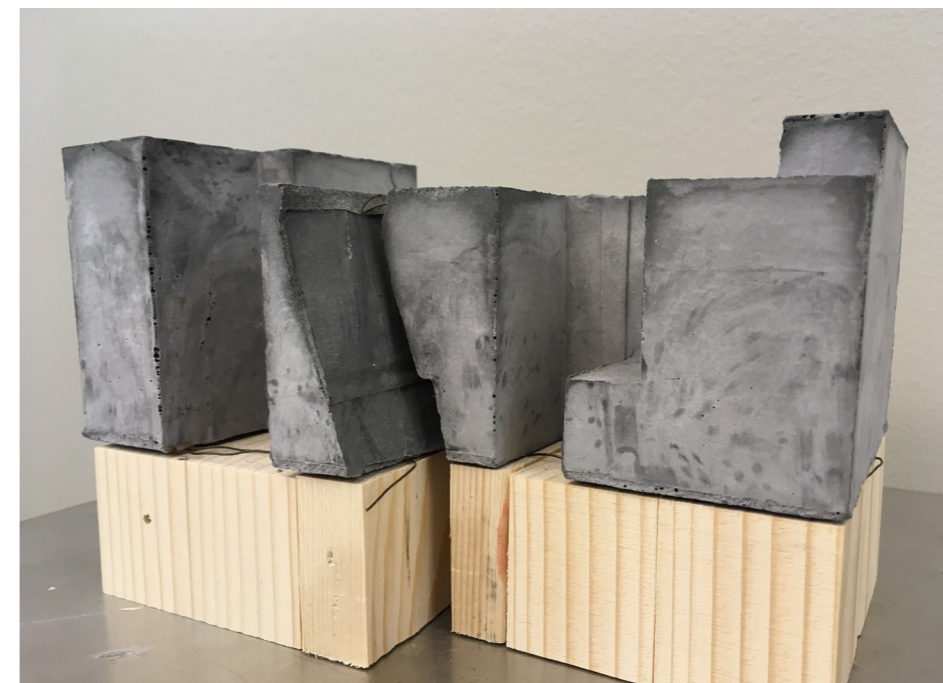
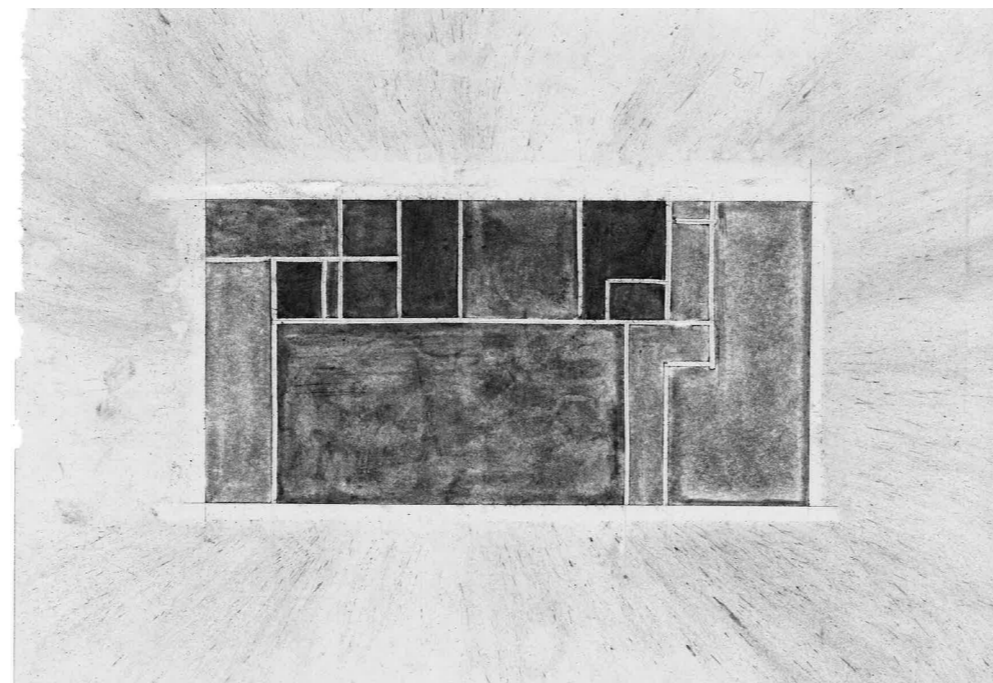
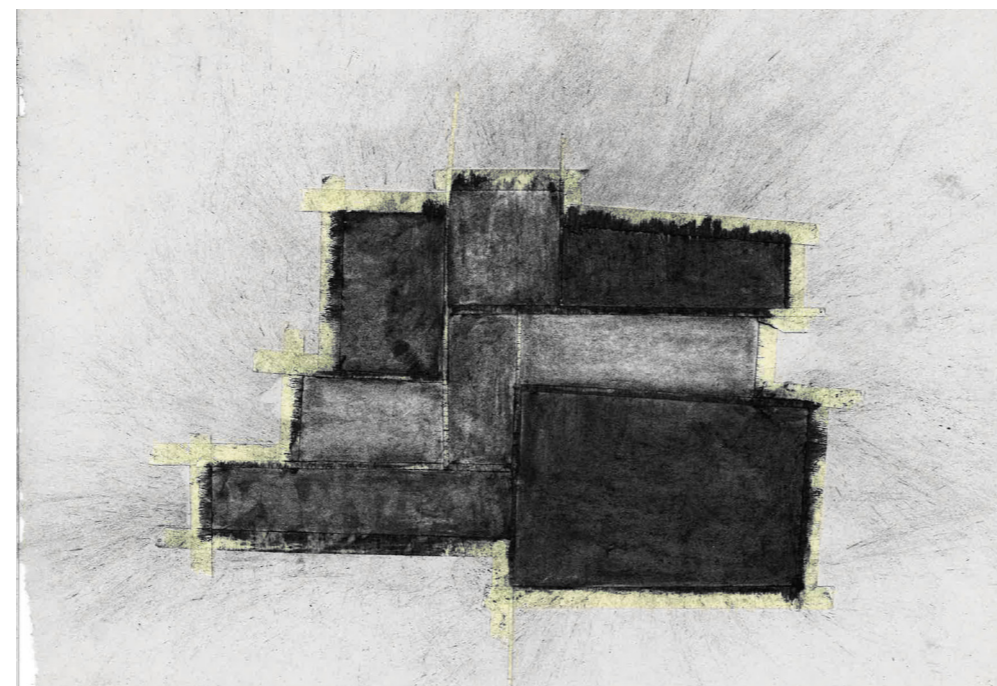
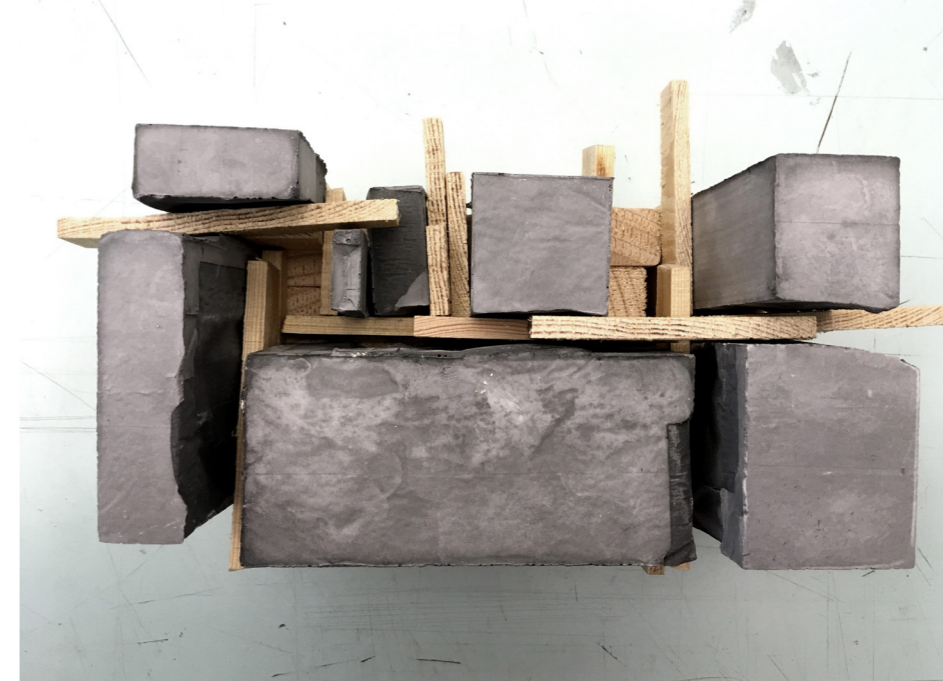
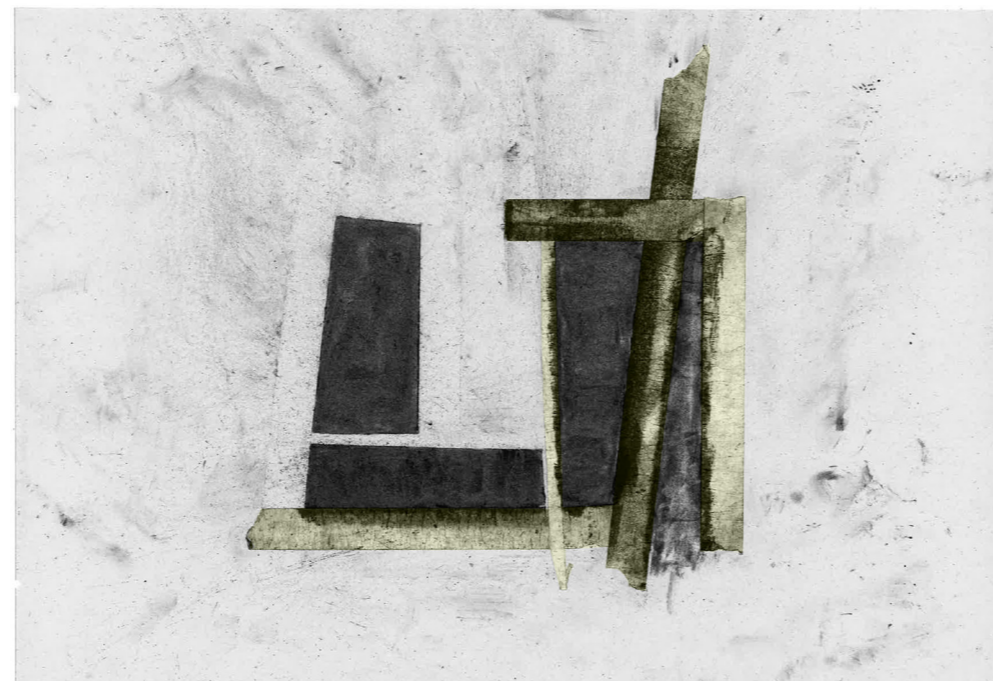


*Old Body
Section 1:100*

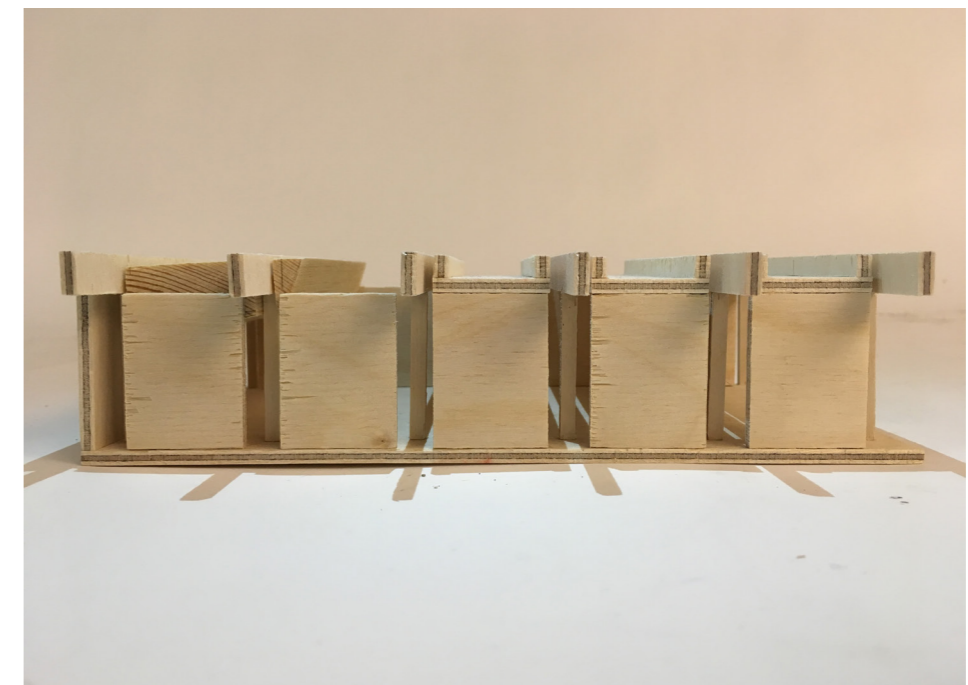
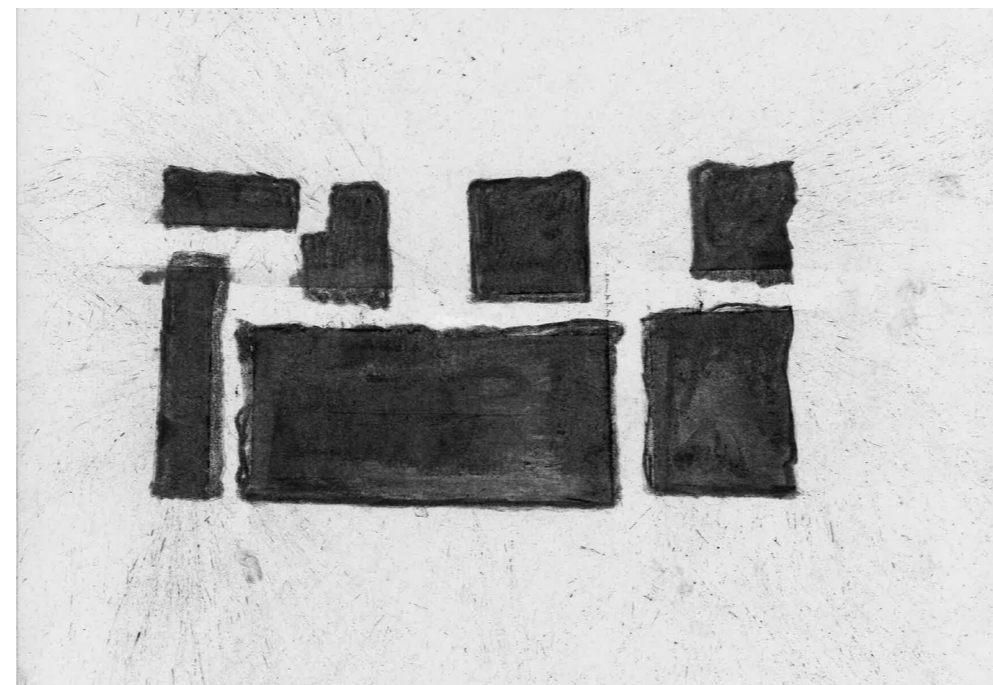
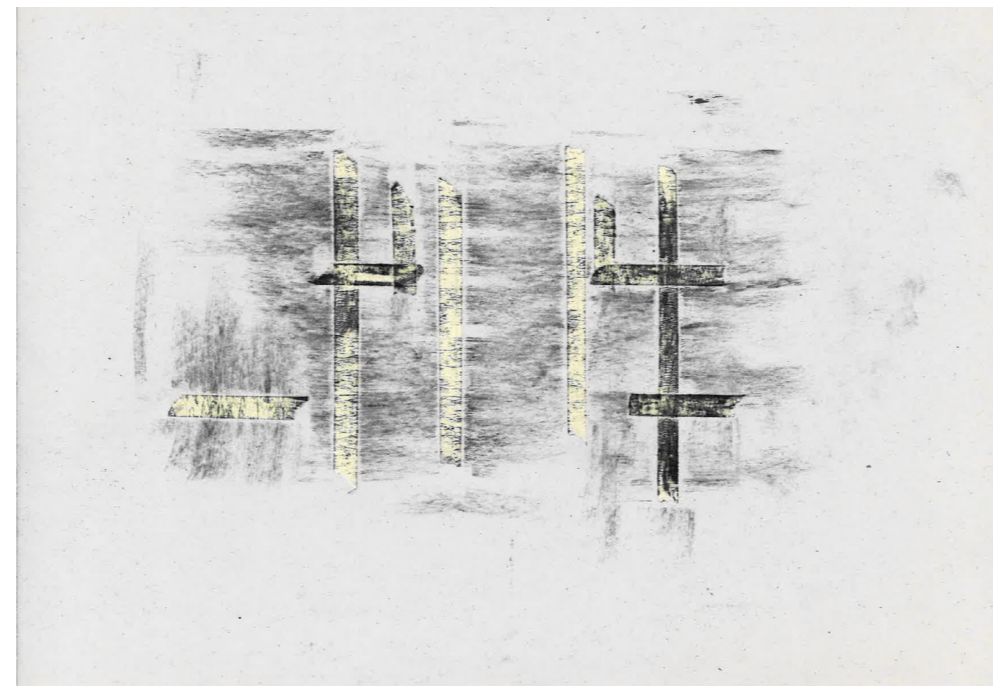
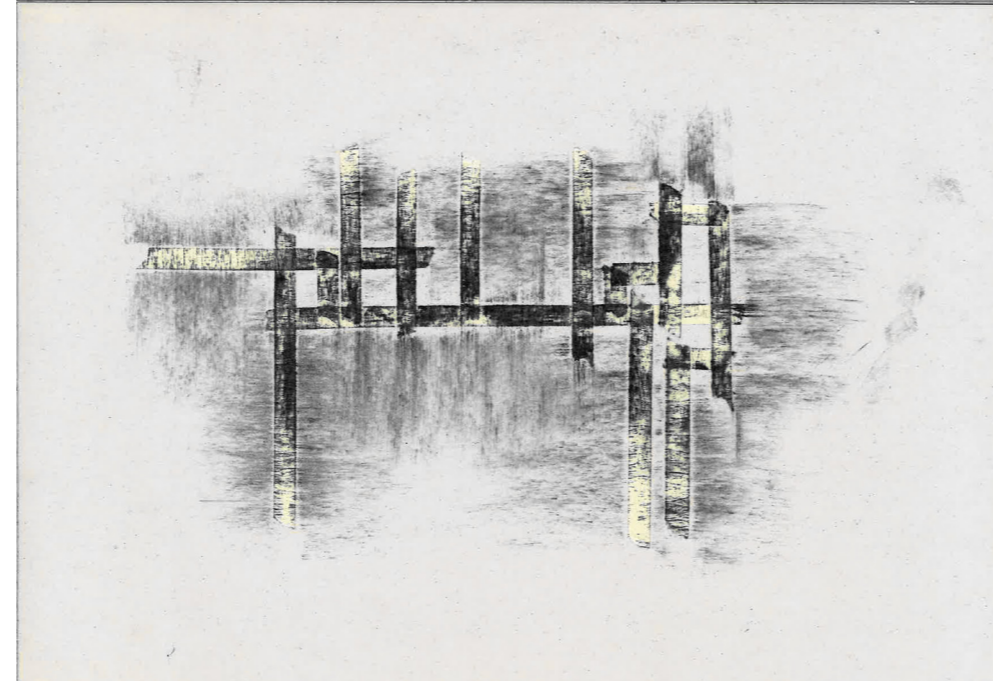
I.
There is a body growing old.



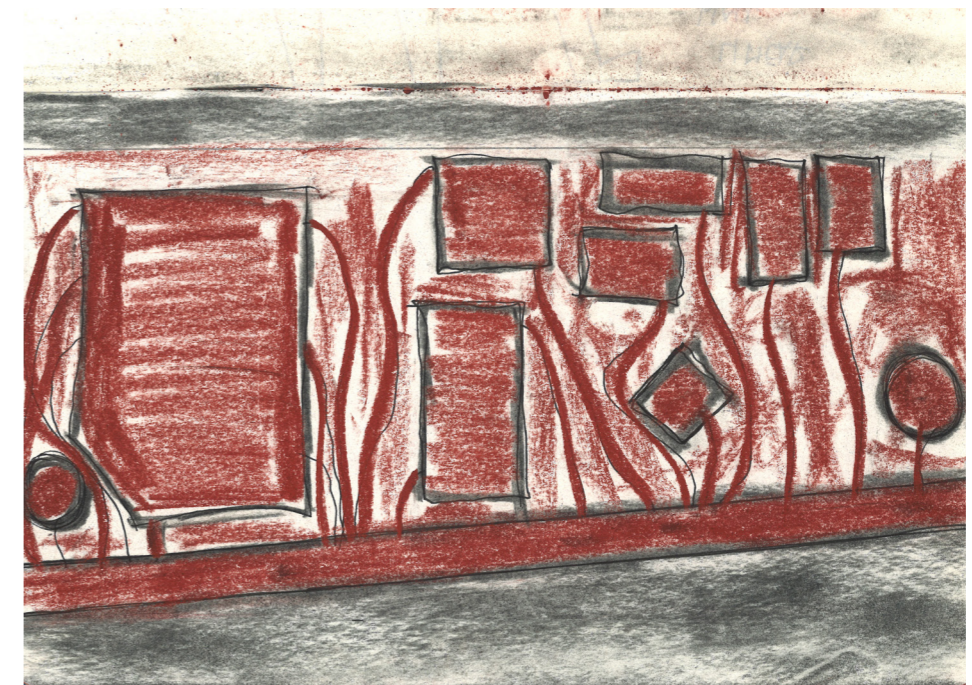
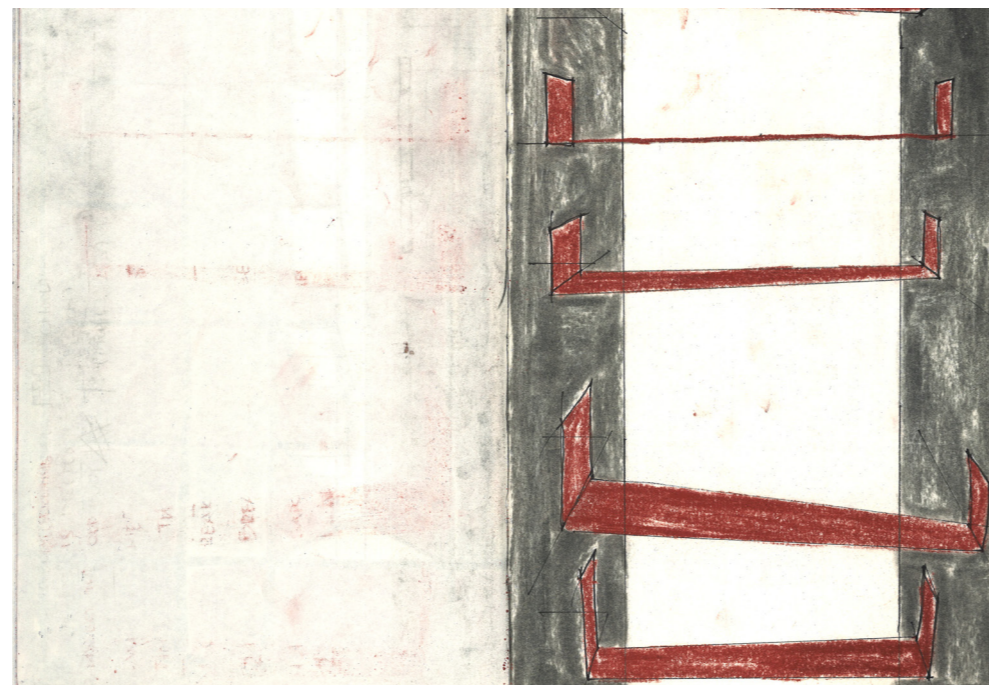
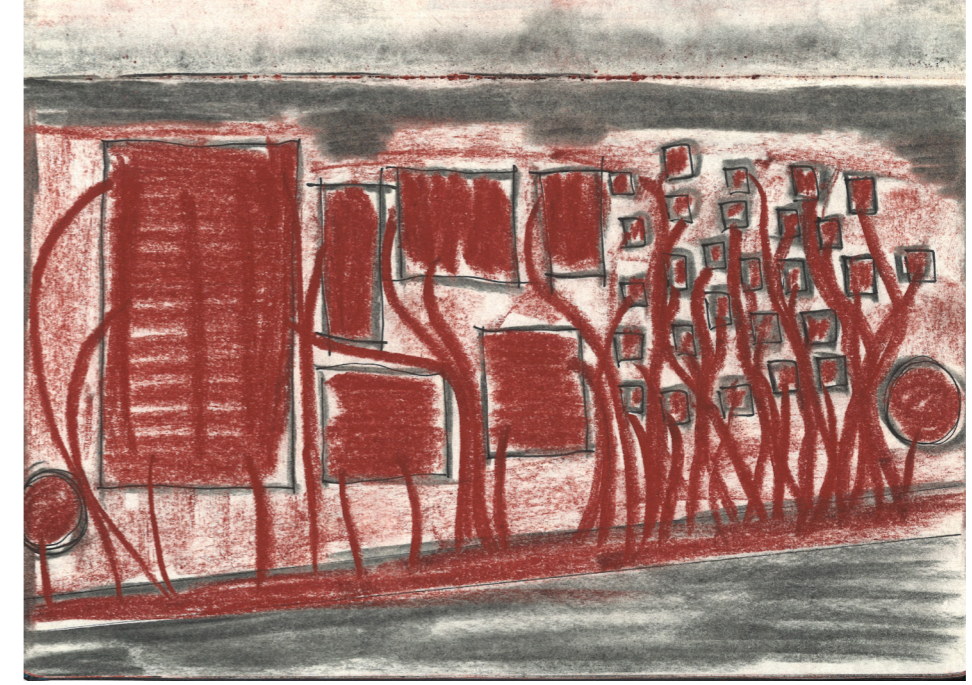
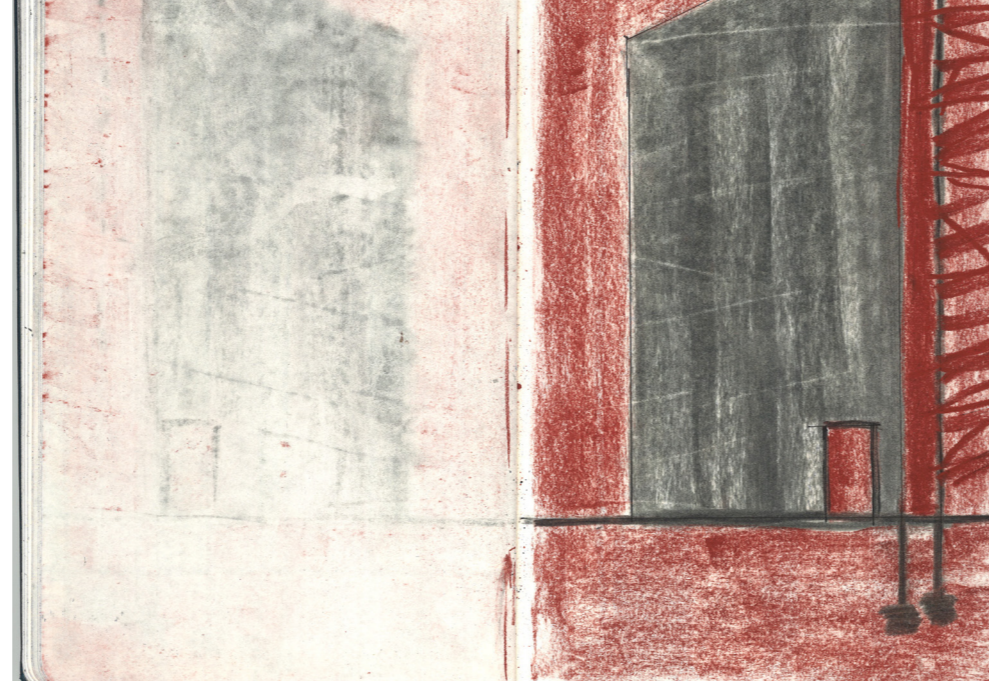
1.
There is a body growing old.
2.
A new body is needed.



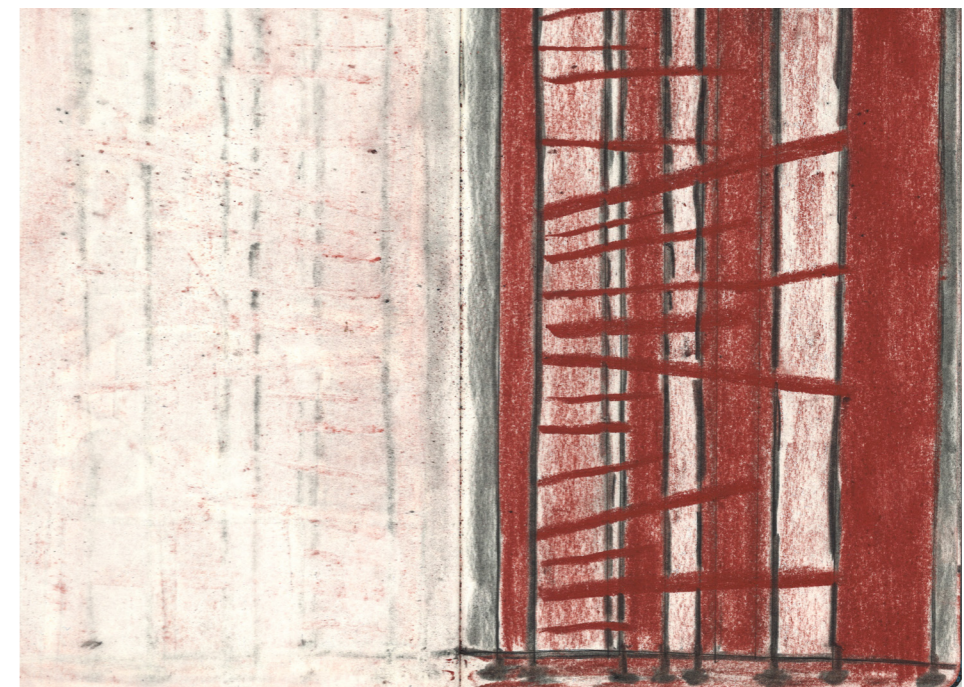
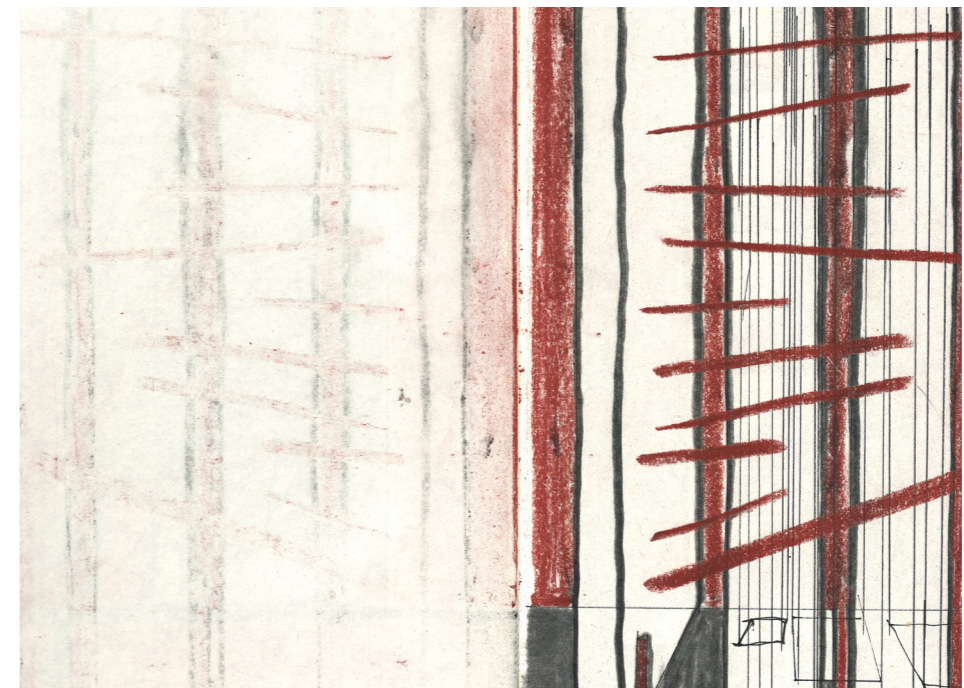
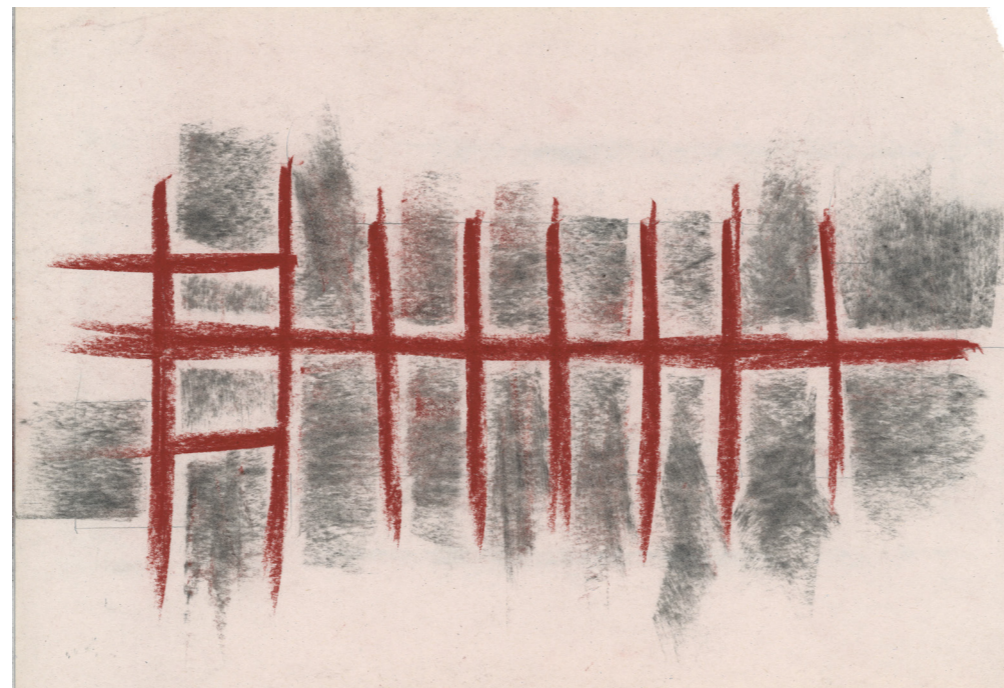
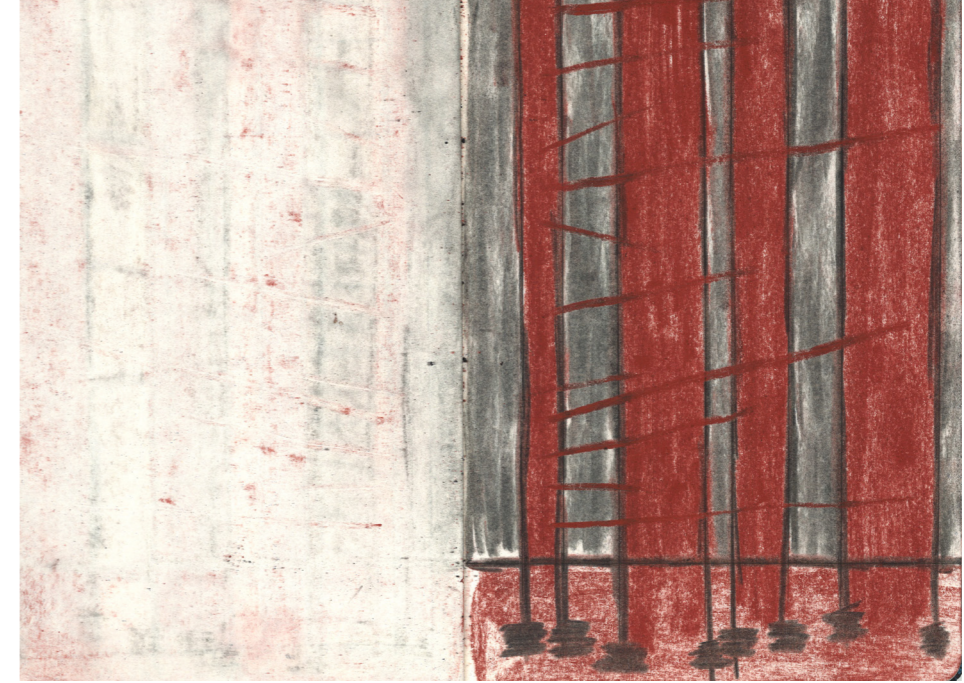
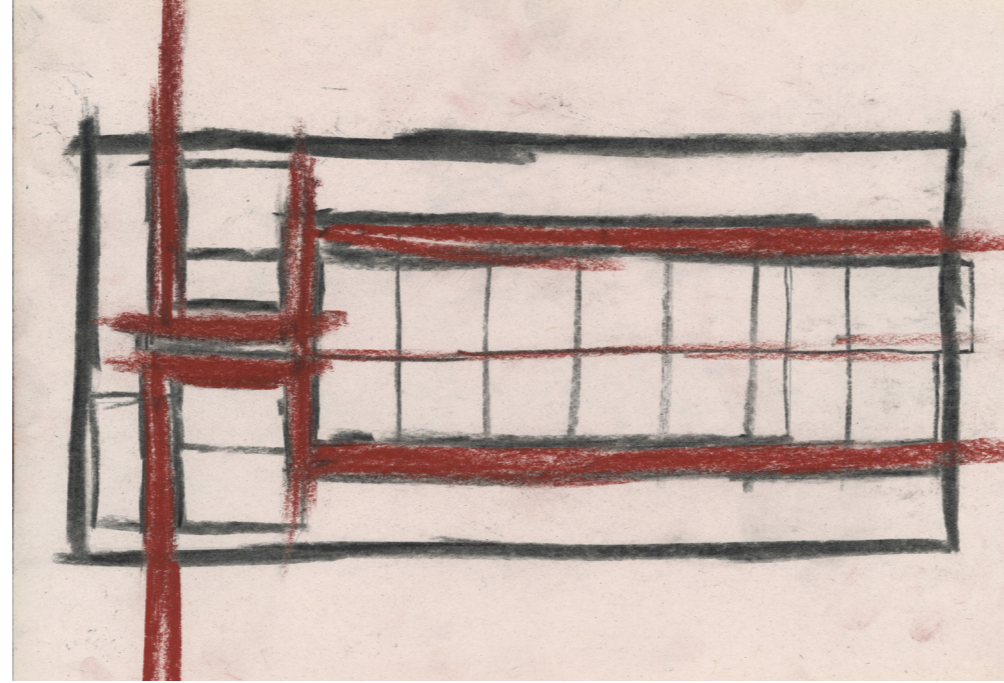
1.
There is a body growing old.
2.
A new body is needed.
3.
Dissect the old body.



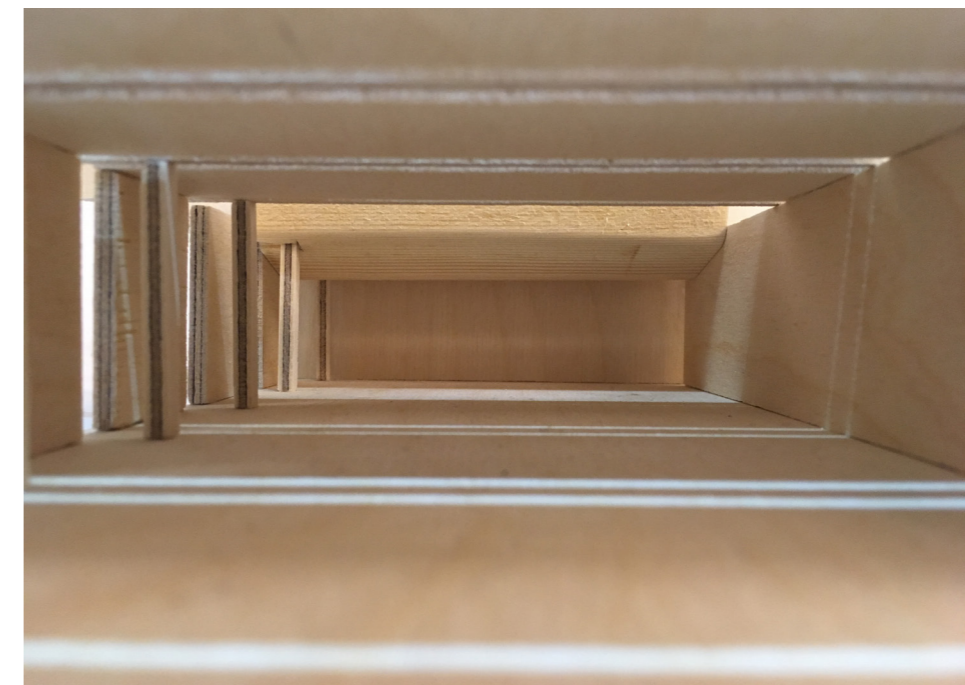
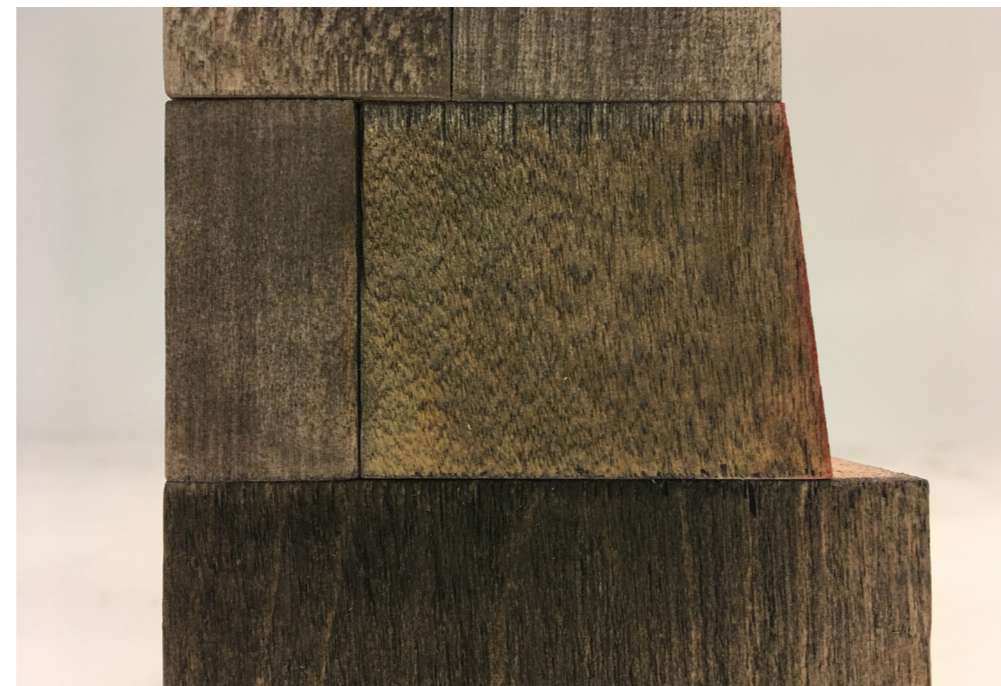
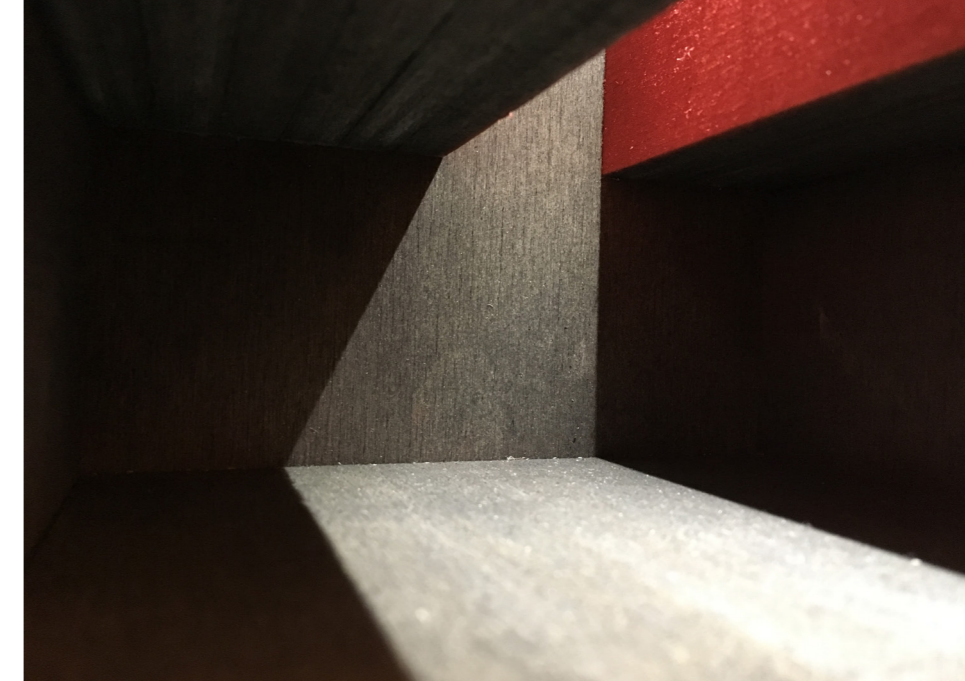
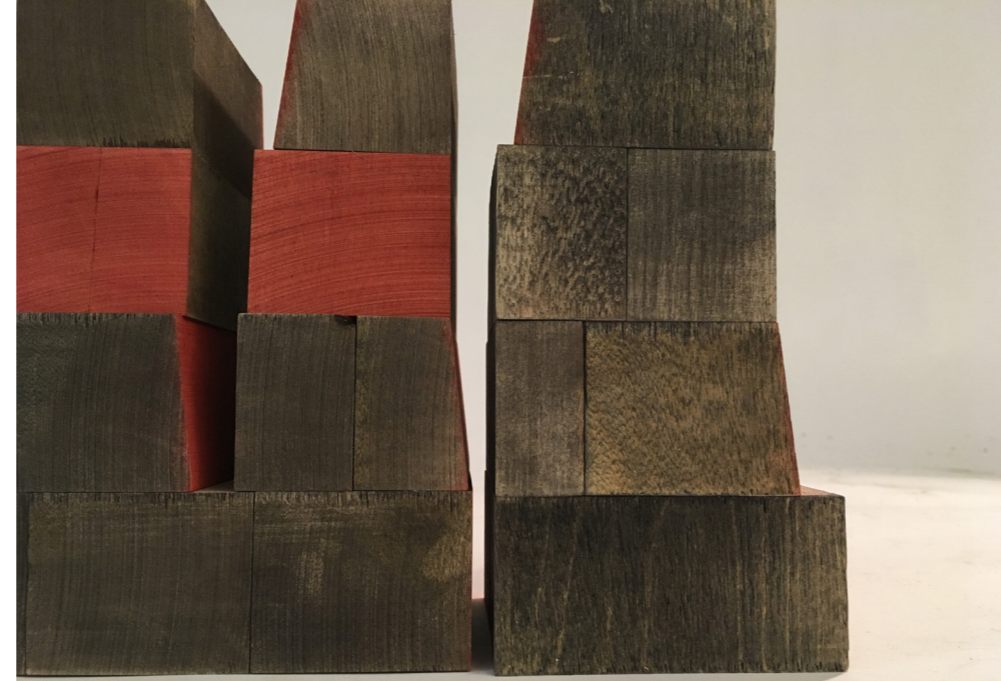
1.
There is a body growing old.
2.
A new body is needed.
3.
Dissect the old body.
4.
Ask why the old body is dissected.



1.
There is a body growing old.
2.
A new body is needed.
3.
Dissect the old body.
4.
Ask why the old body is dissected.
5.
Find out two answers.

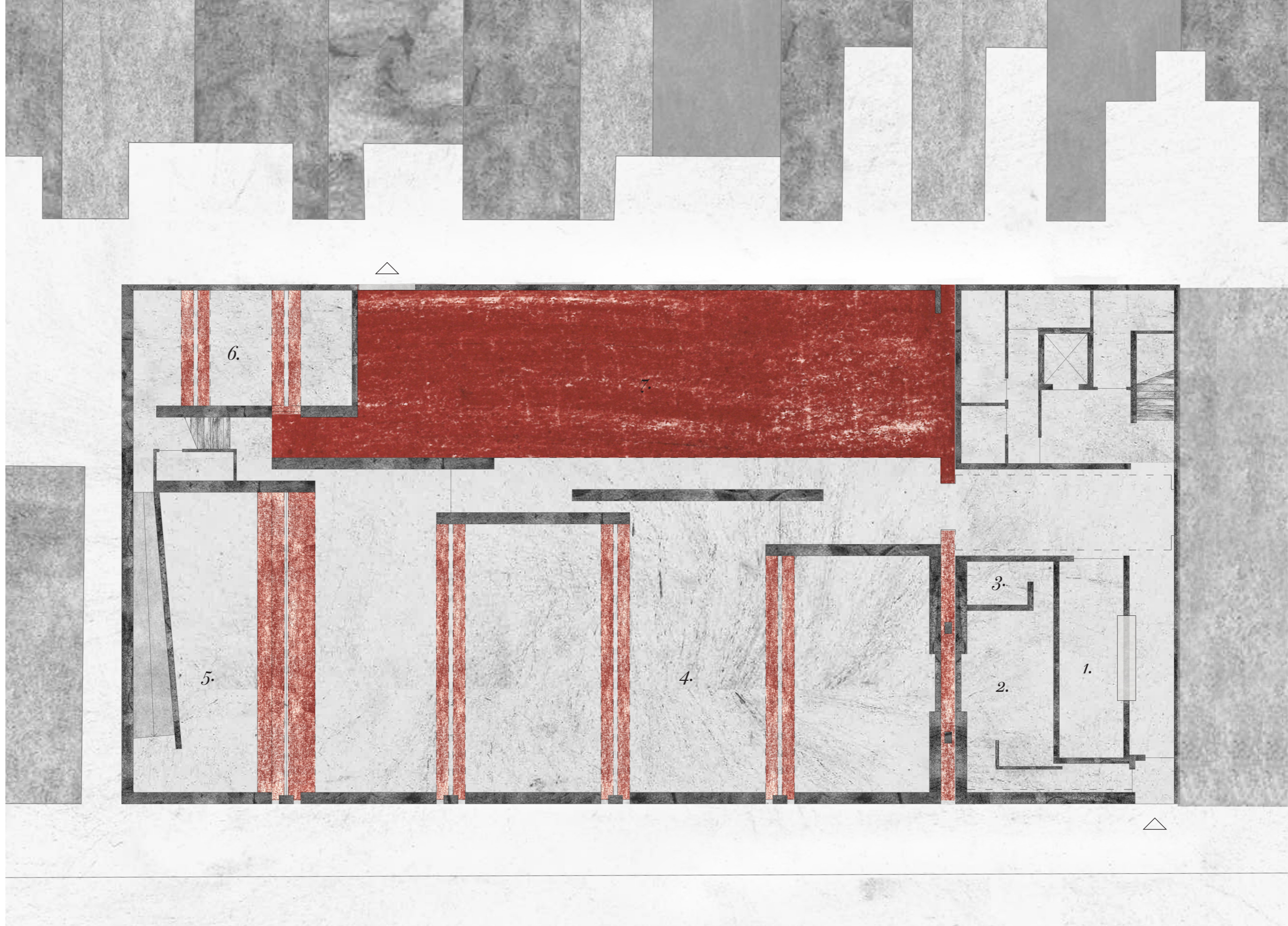


1.
There is a body growing old.
2.
A new body is needed.
3.
Dissect the old body.
4.
Ask why the old body is dissected.
5.
Find out two answers.
- 6.1
Cut the old body, to let the light in.
- 6.2
Cut the old body, to separate the rooms,
make them an individual.



1.
There is a body growing old.
2.
A new body is needed.
3.
Dissect the old body.
4.
Ask why the old body is dissected.
5.
Find out two answers.
- 6.1
Cut the old body, to let the light in
- 6.2
Cut the old body, to separate the rooms,
make them an individual
- 7.1 Then light fill gaps, we talk about thick-
ness, thinness, gap.
- 7.2 Then all rooms are individuals, we talk
about the relationship and connection be-
tween them.





1. Reception
2. Entrance Hall

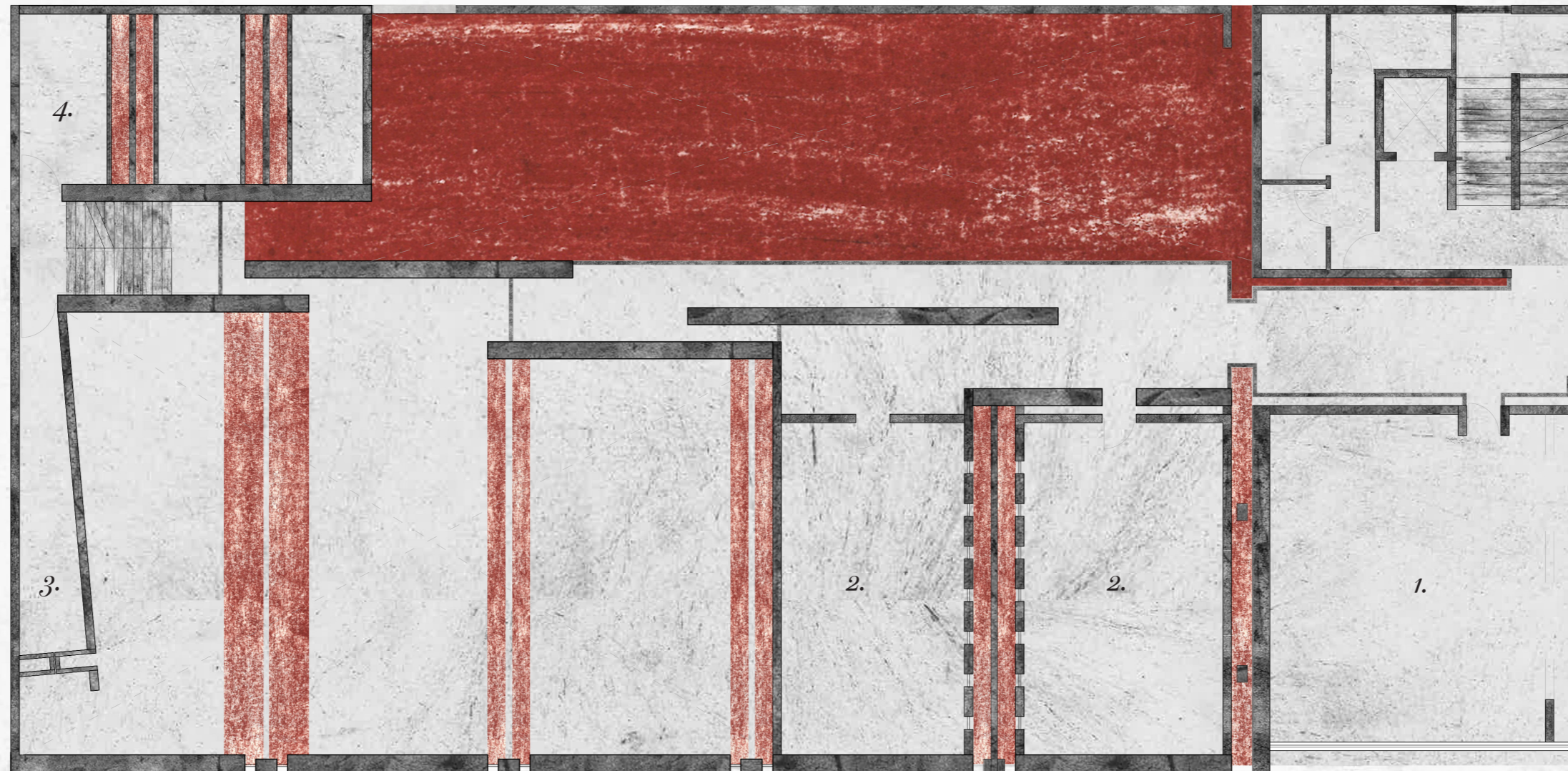
3. Waiting Room
4. Church

5. Altar/Stage
6. Choir Room

7. Courtyard

1m ←

*New Body
Ground Floor Plan 1:100*

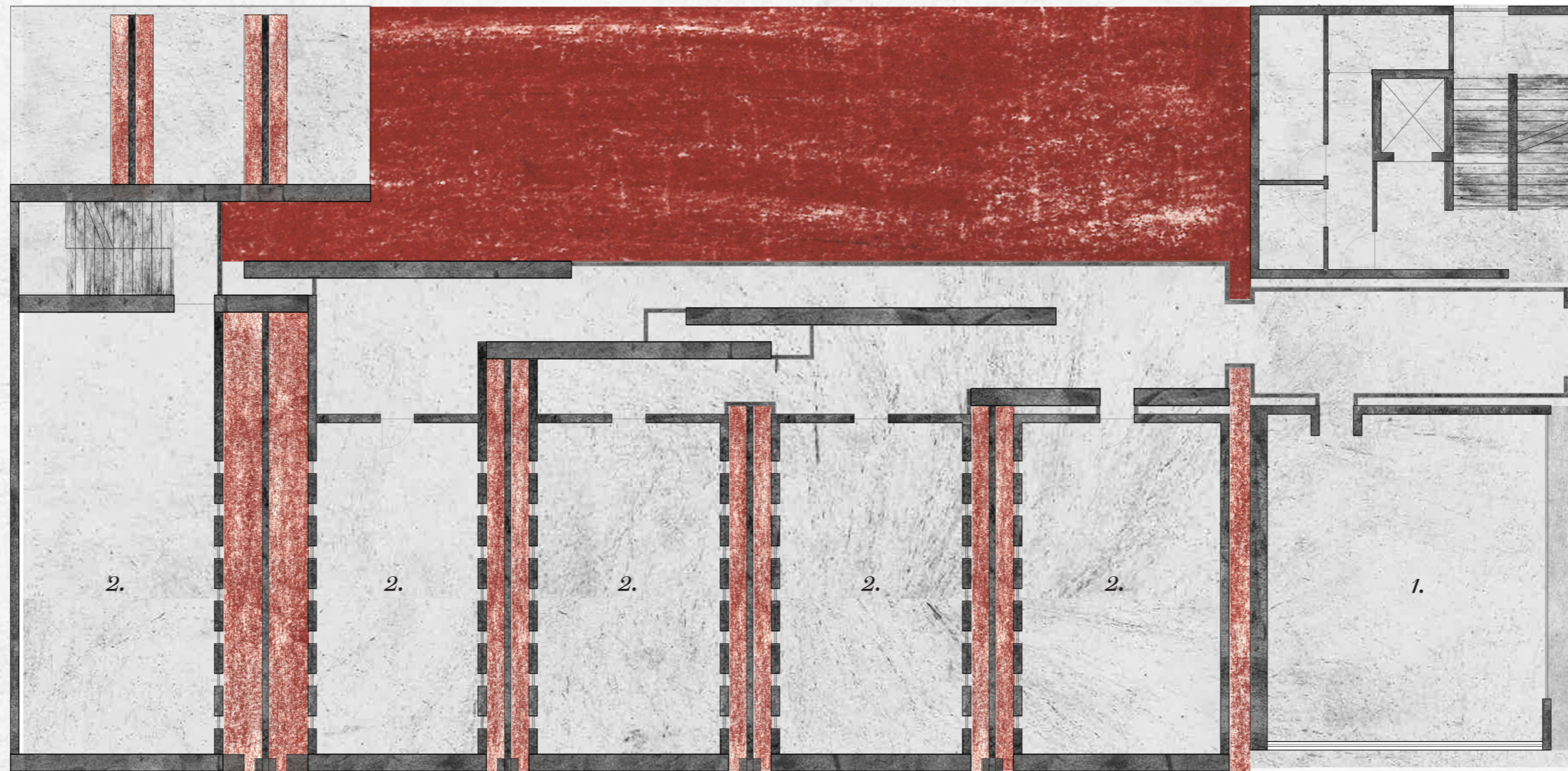


1. Church Office
2. Group Room

3. Prayer Room
4. Church Storage Room

mm ←

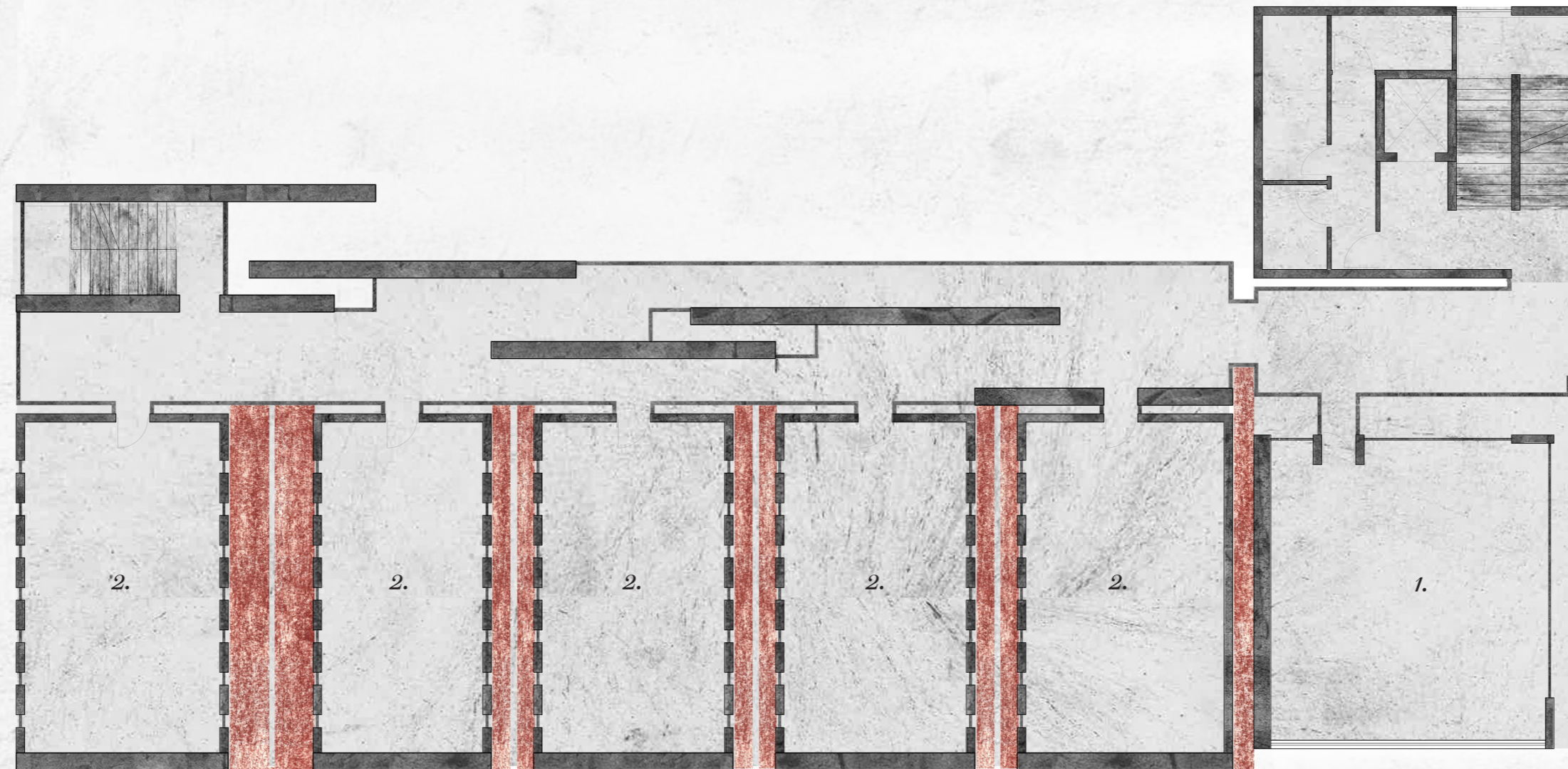
New Body
1/f Plan 1:100



1. Church Office
2. Group Room

mm ← +

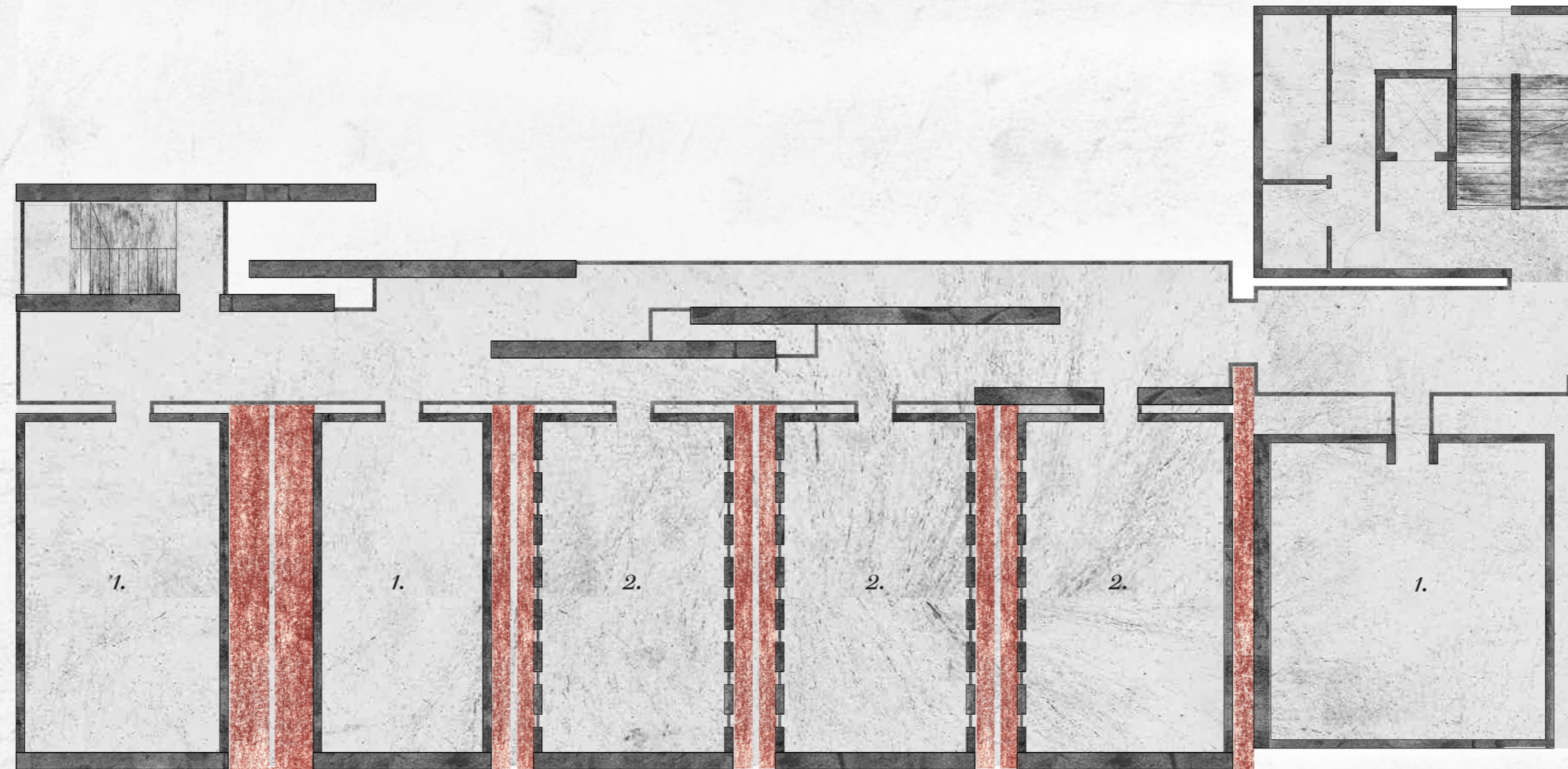
New Body
2/f Plan 1:100



1. Cornerstone Office
2. Class Room

mm ←

New Body
3/f Plan 1:100



1. Roof Garden
2. Class Room

mm ← +

New Body
4/f Plan 1:100













