



**TWO BIRDS,  
ONE STONE**

by Jon Erik Dybedal Brekken

**SUBJECT**





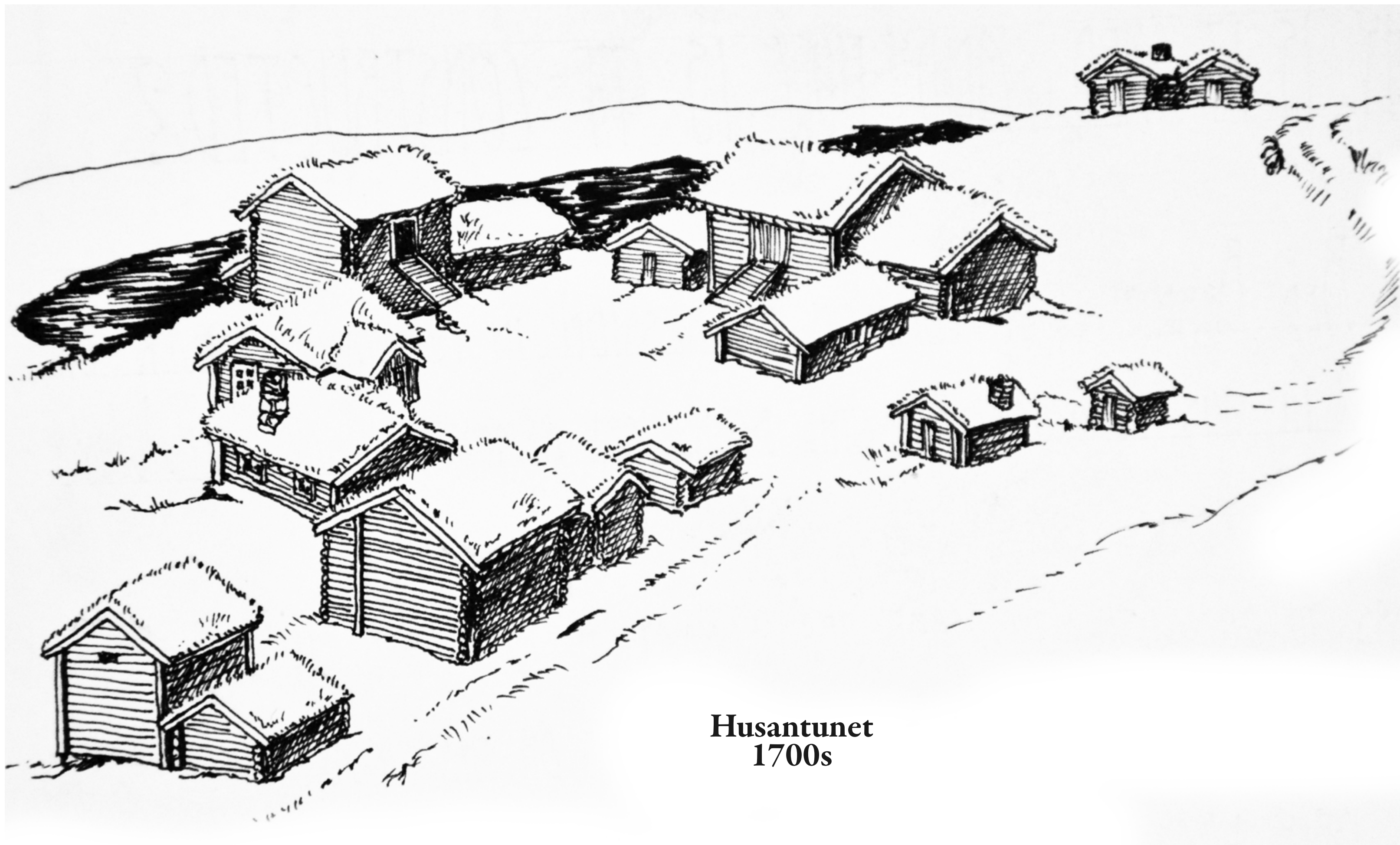
501 801  
registered outbuildings

2nd  
most common building typology

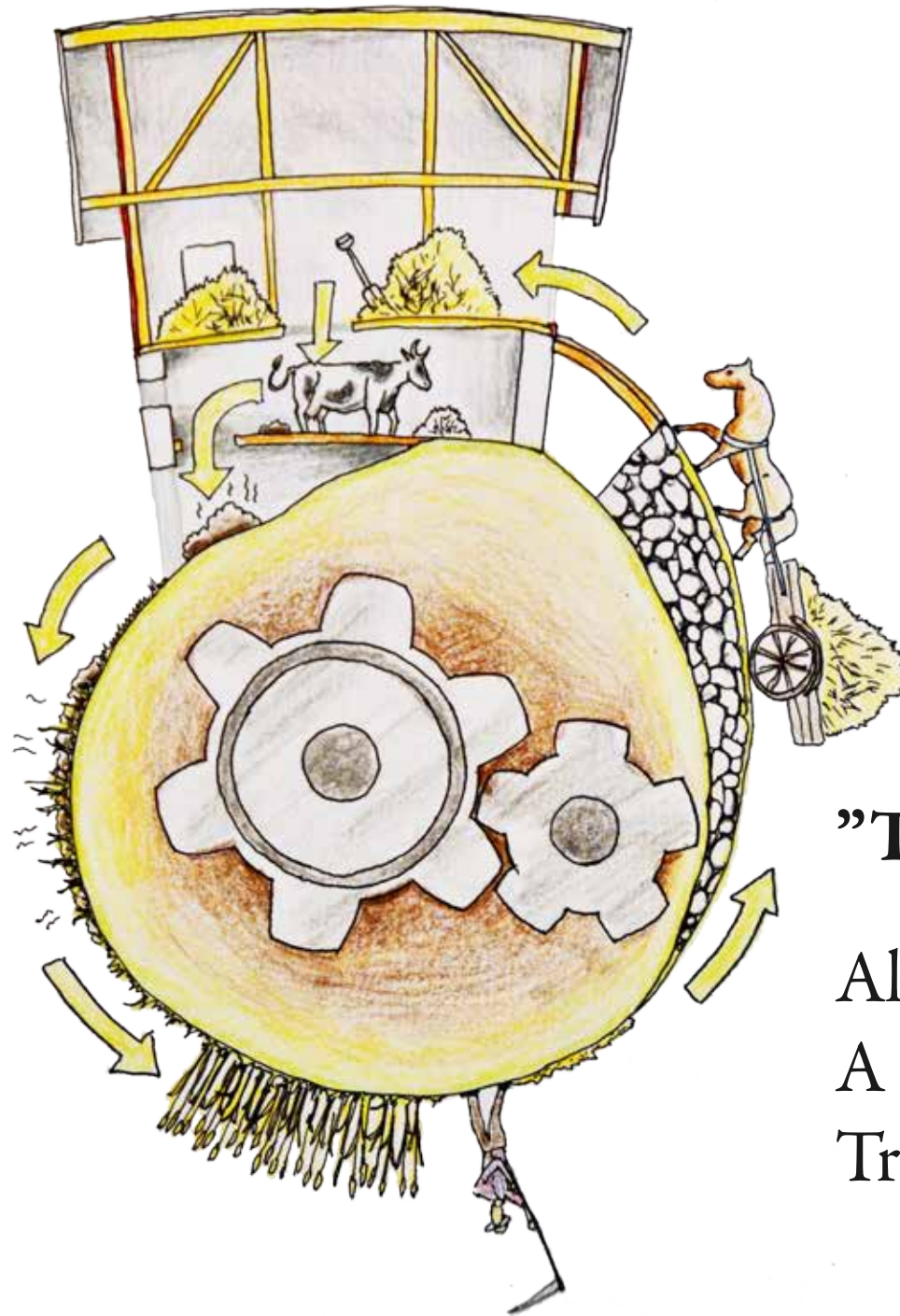
25% or 125 000  
either empty or not in use



**What is the potential that lies in abandoned agricultural building? Buildings that have lost their initial function and use, and their need to transform to stay "alive". Keeping the notion of the cultural history while applying modern standards.**

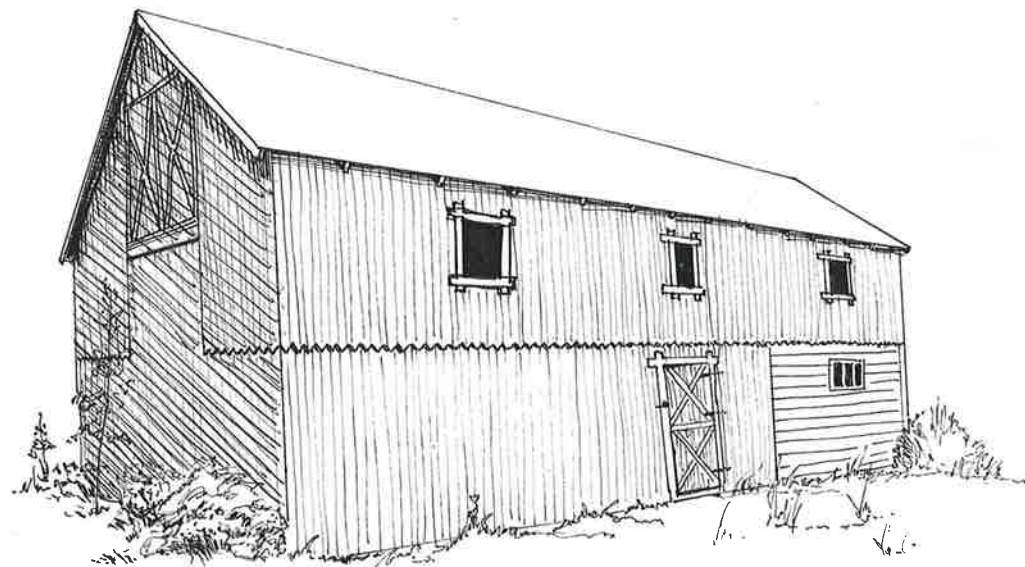
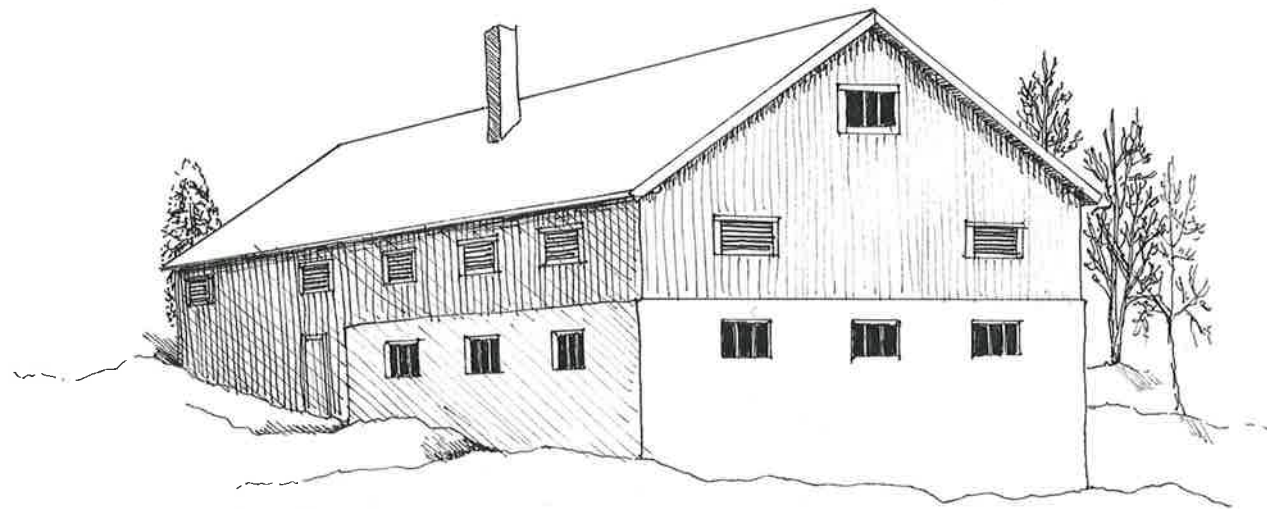
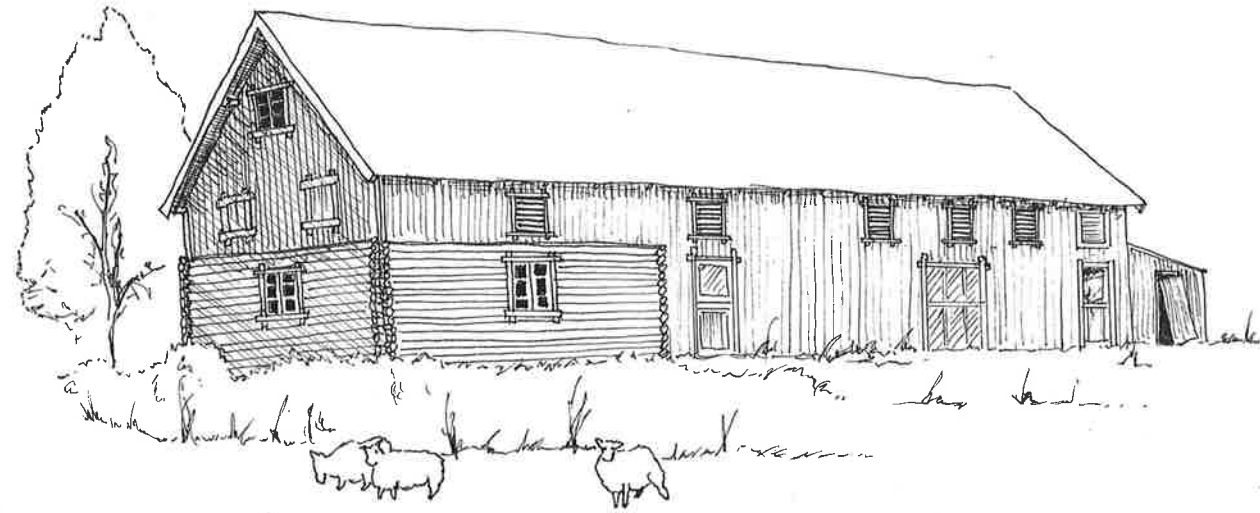


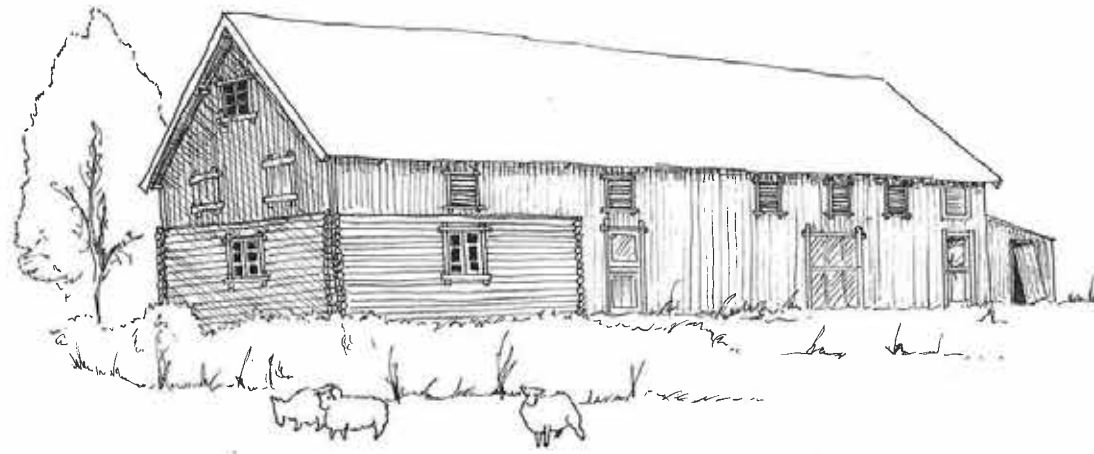
**Husantunet**  
**1700s**



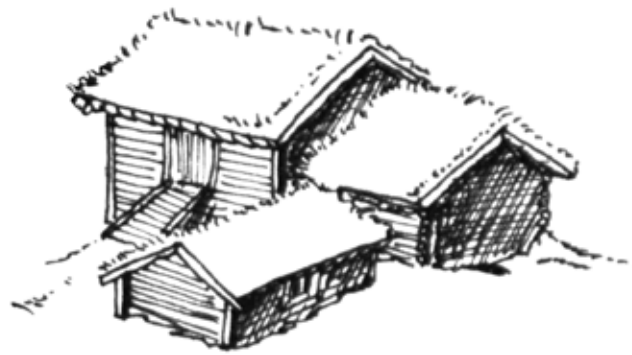
## **”The Unity Barn**

Almost a machine in itself.  
A result of ”The Great  
Transformation.





1800s to mid 1900s  
fewer larger houses, the unity barn  
trade agriculture.



pre 1800s  
small single purposed houses  
self provided farming



mid 1900s til present  
large production houses  
several farms cooperate



A winter scene featuring a snow-covered evergreen tree in the foreground on the left. In the background, a dark wooden building with a light-colored stone or concrete base is visible. The ground is covered in snow, and other snow-laden trees are on the right. The sky is bright and overcast.

**THE CASE  
KRONMOGARDEN**



1597



51,5%









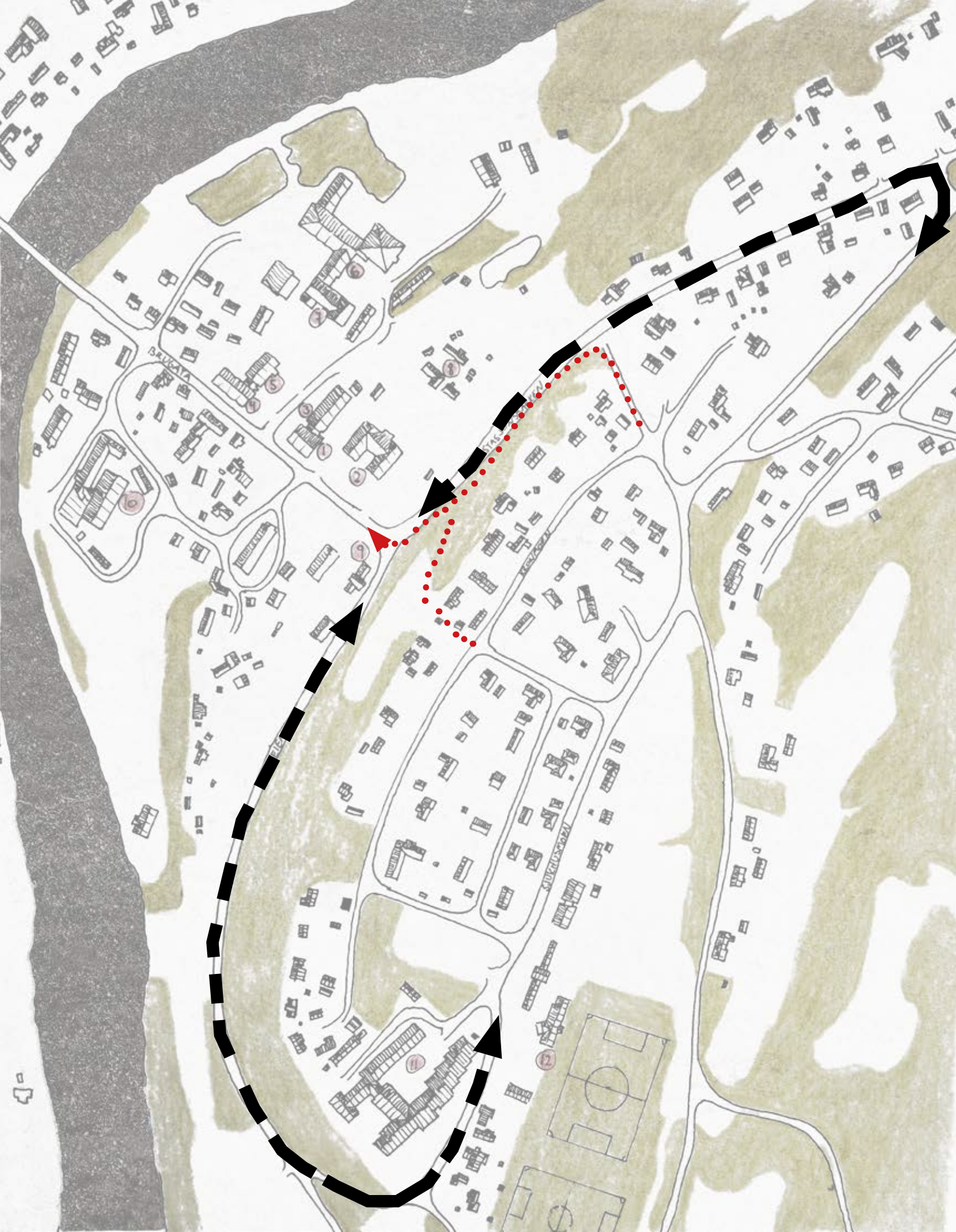


- 1 Town hall and police
- 2 Grocery store and offices
- 3 Library
- 4 Local Bank (TOS)
- 5 Health Clinics
- 6 Primary school
- 7 Vidarheim community house
- 8 Dølmotunet farm museum
- 9 Tolga station, train and buses
- 10 Industry area
- 11 Tolga nursinghome
- 12 Sætersgård Stafium

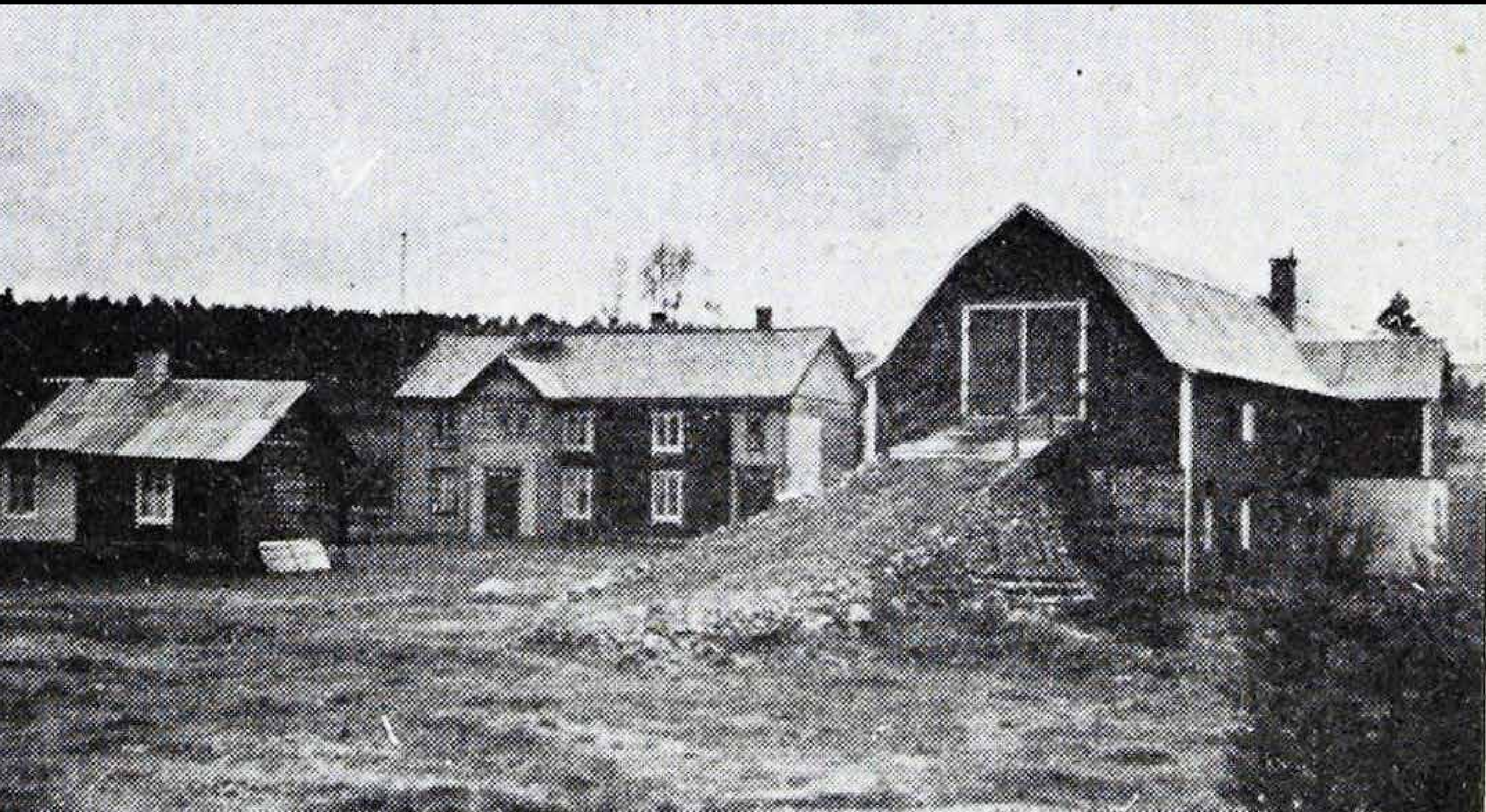


- ① Fv 30 Tynset - Røros
- ② 26 to Trysil and Sweden
- ③ Fv 81 to Tynset
- ④ Rørosbanen Hamar - Røros ---Trondheim.

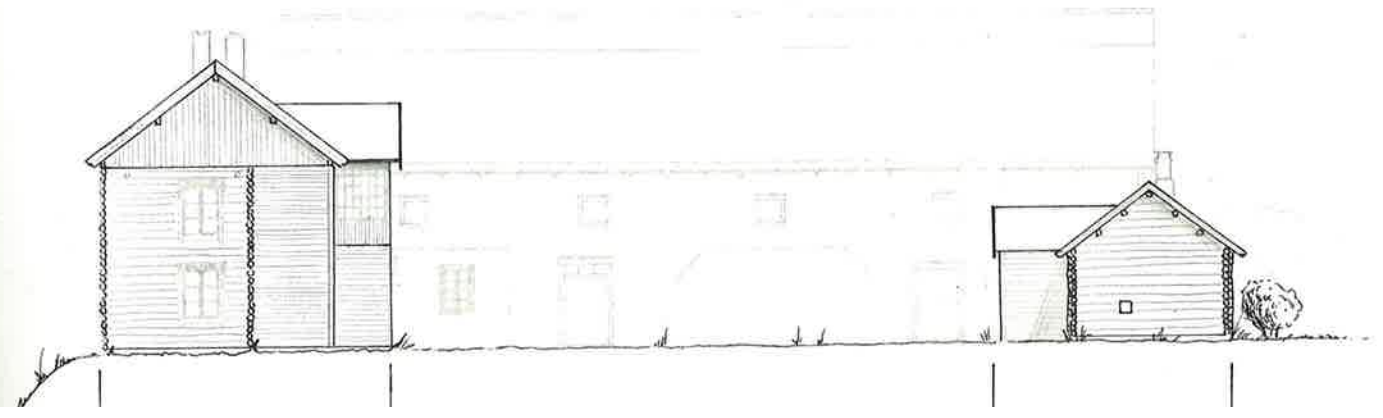




- Car route
- Pedestrians

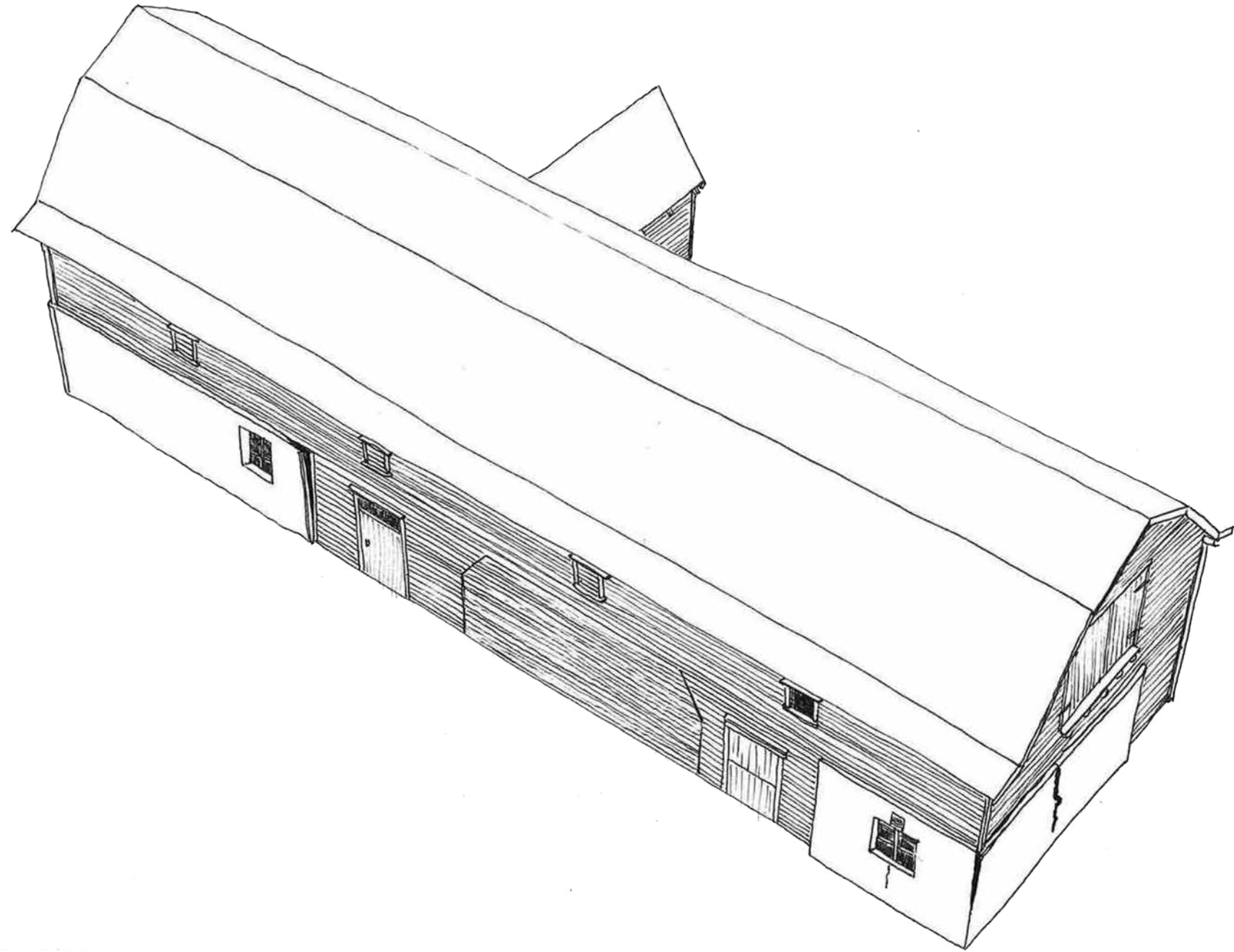


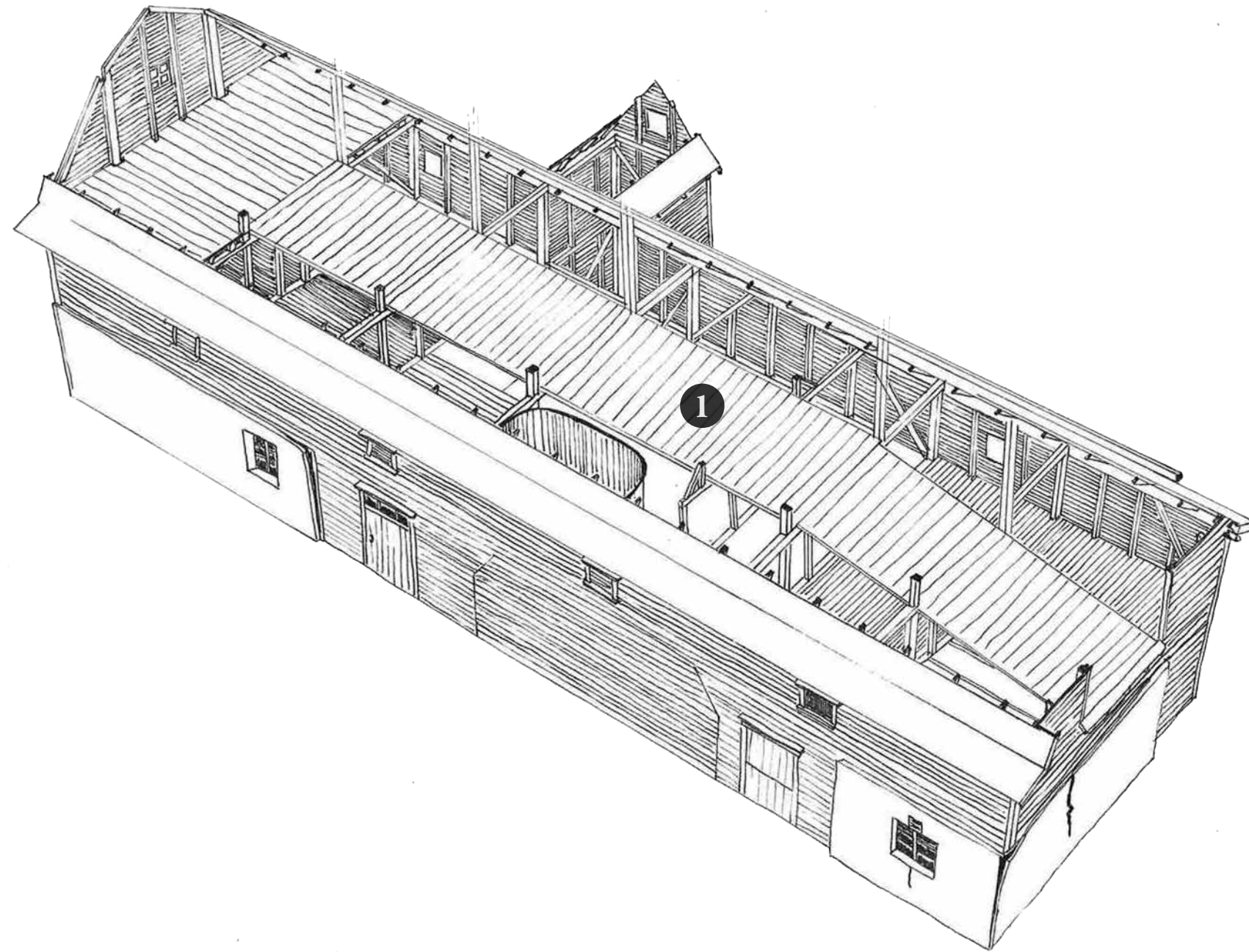








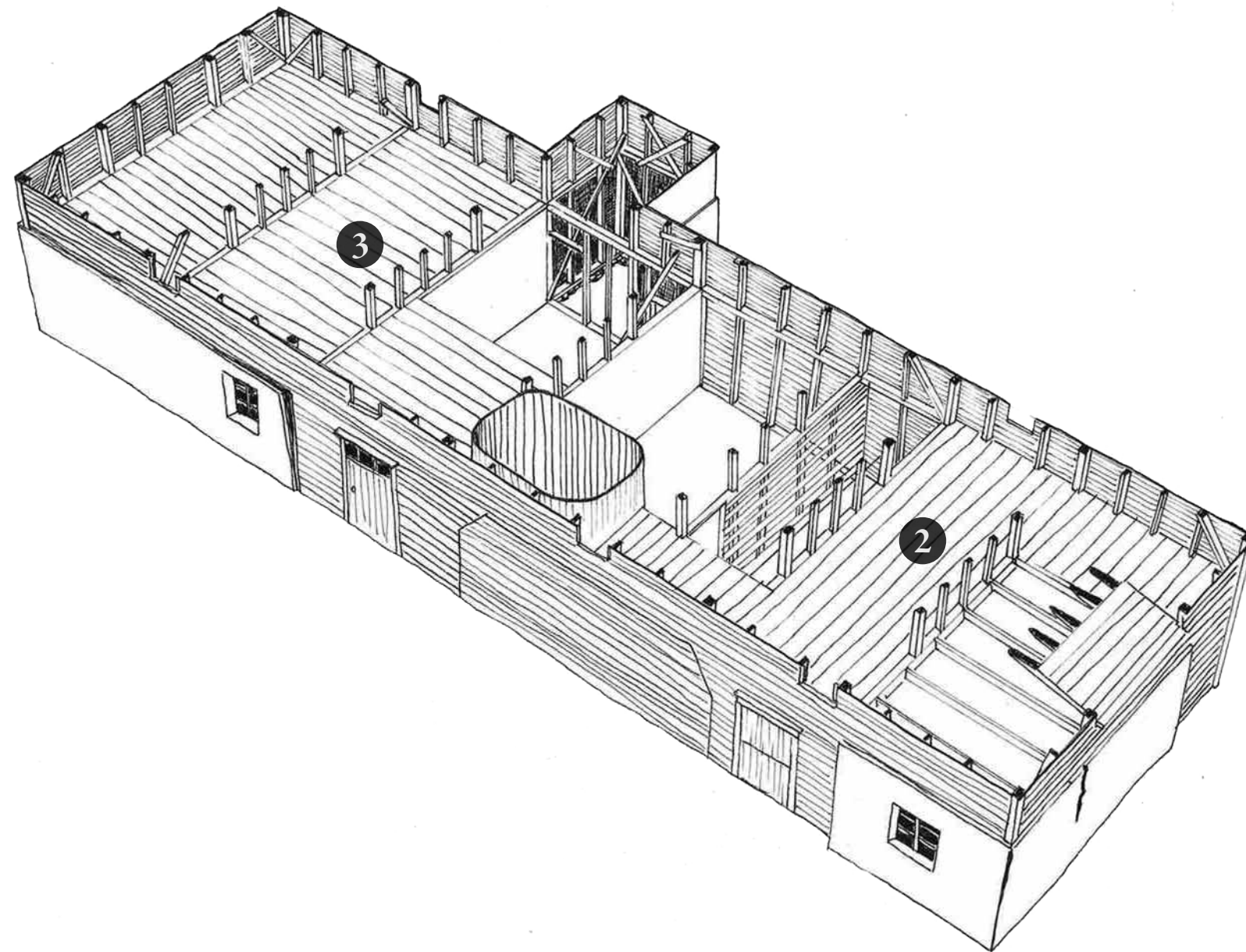




**Second floor:**

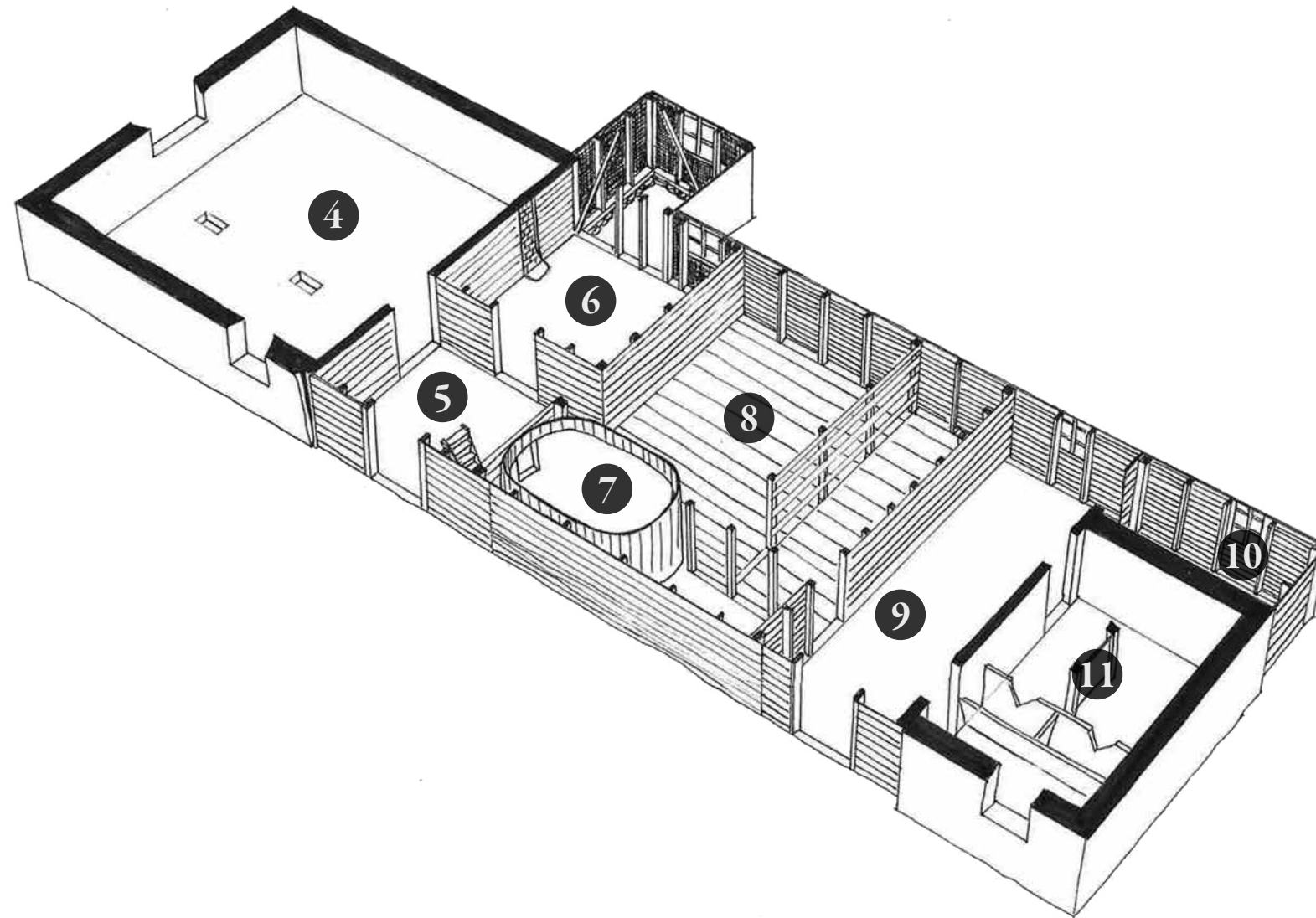
1) Barn bridge, 77 m<sup>2</sup>





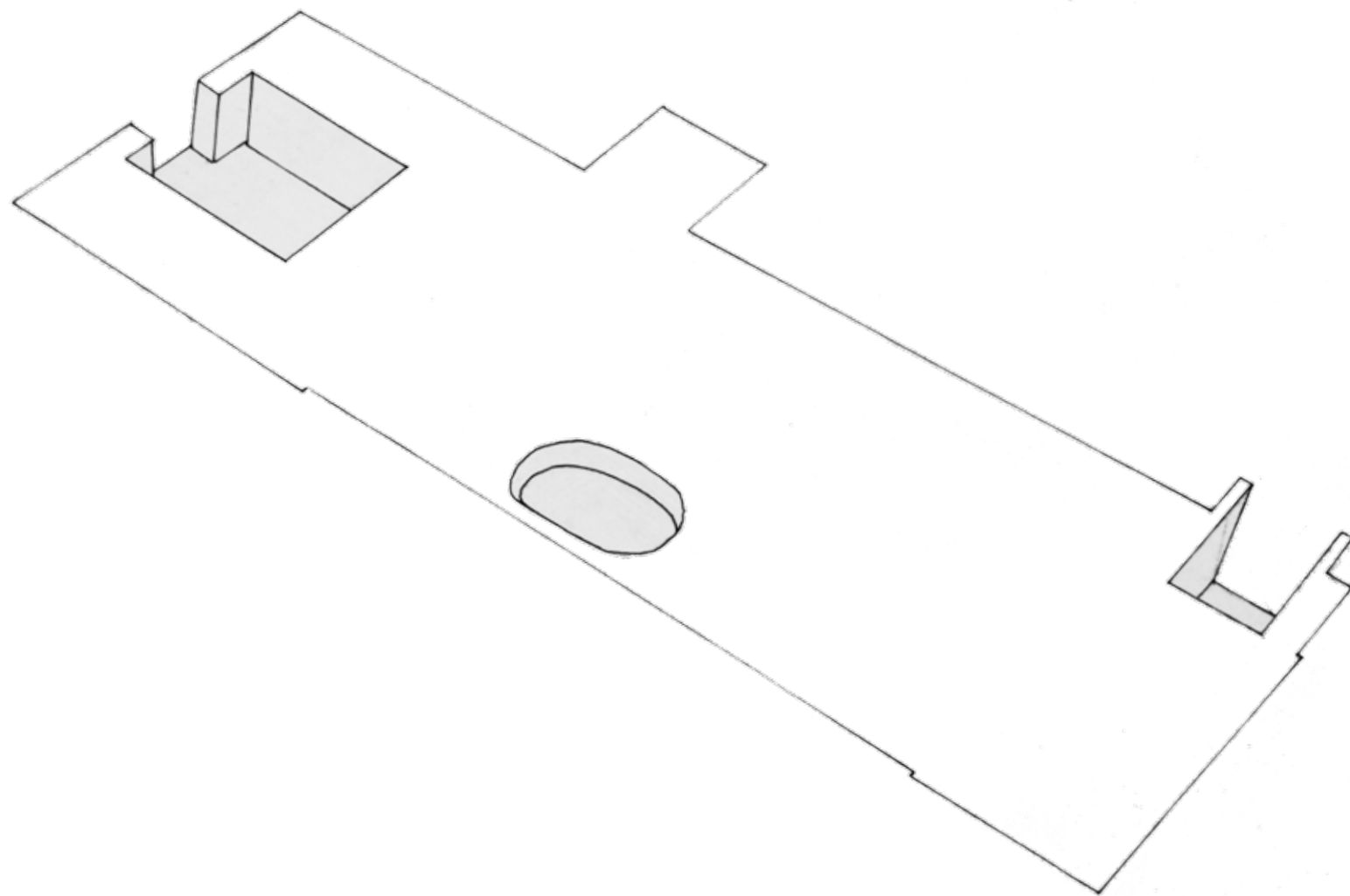
**First floor:**

- 2) Hayloft 1, 19 m<sup>2</sup>
- 3) Hayloft 2, 24 m<sup>2</sup>



**Ground floor:**

- 4) Cow/sheep stalls, 42 m<sup>2</sup>
- 5) Entrance, 8 m<sup>2</sup>
- 6) Storage, 22 m<sup>2</sup>
- 7) Silo, 5 m<sup>2</sup>
- 8) Storage, 32 m<sup>2</sup>
- 9) Stable entrance, 17 m<sup>2</sup>
- 10) Stable storage, 5 m<sup>2</sup>
- 11) Stable, 16 m<sup>2</sup>



**Sub level**

12) Cellar Cow/sheep stalls, 13 m<sup>2</sup>

13) Silo, 5 m<sup>2</sup>

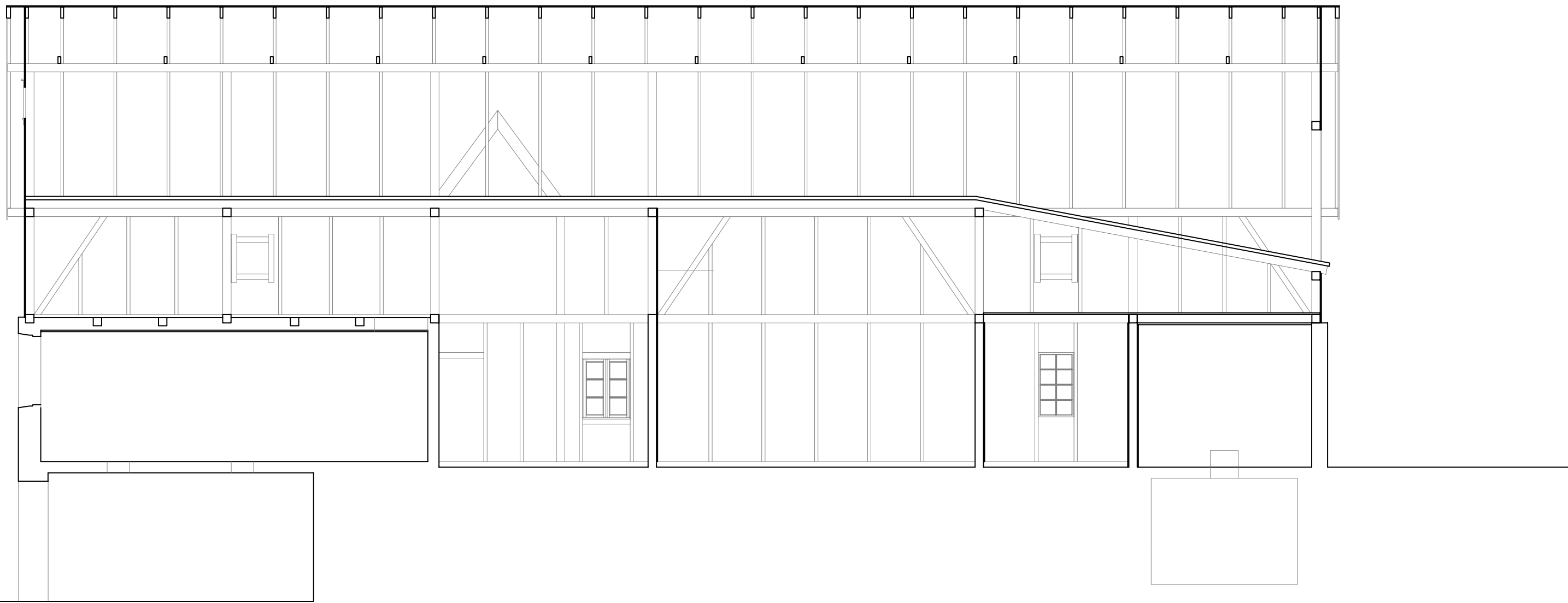
14) Cellar (stable), 4,5 m<sup>2</sup>

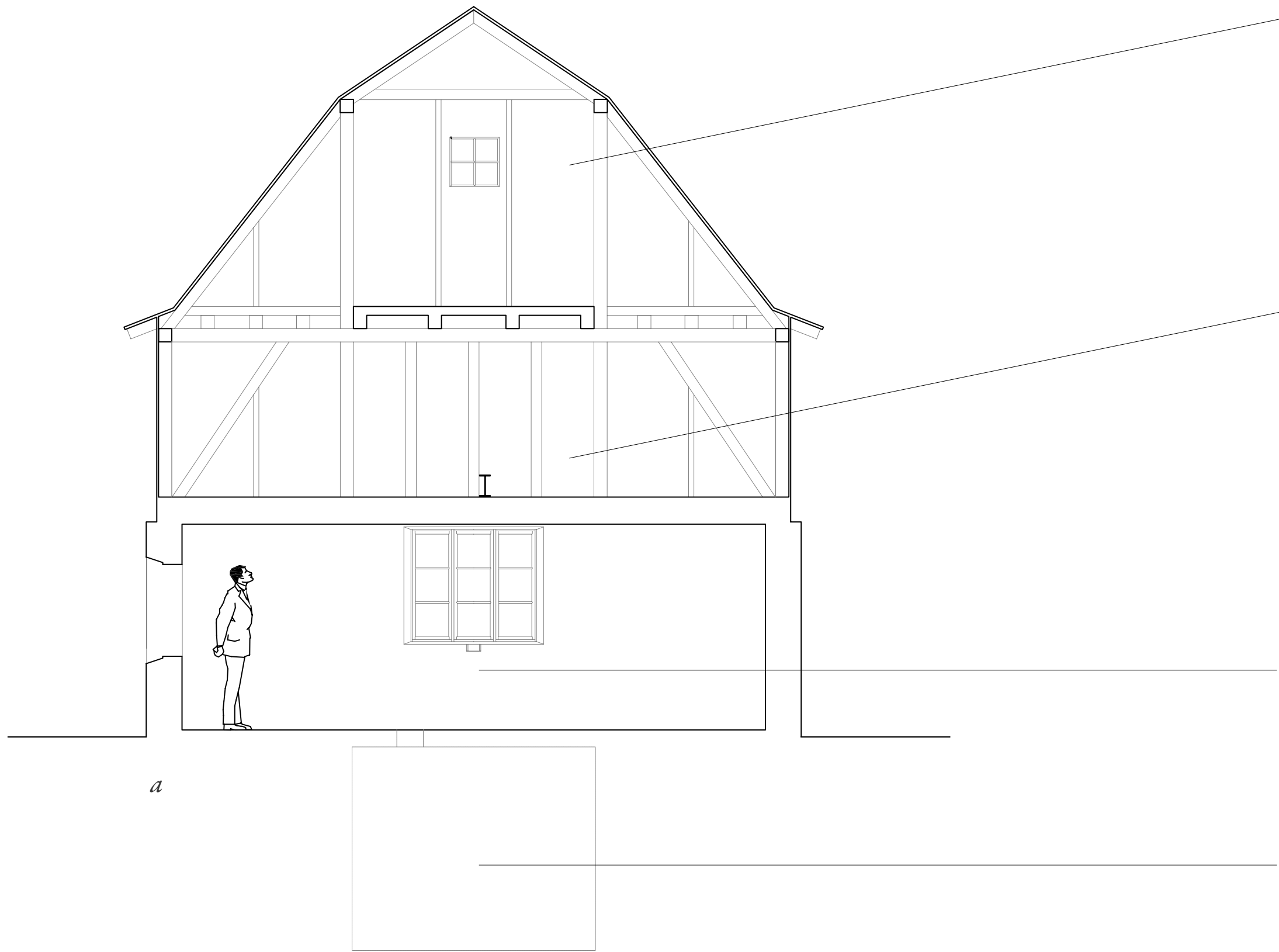
*a*

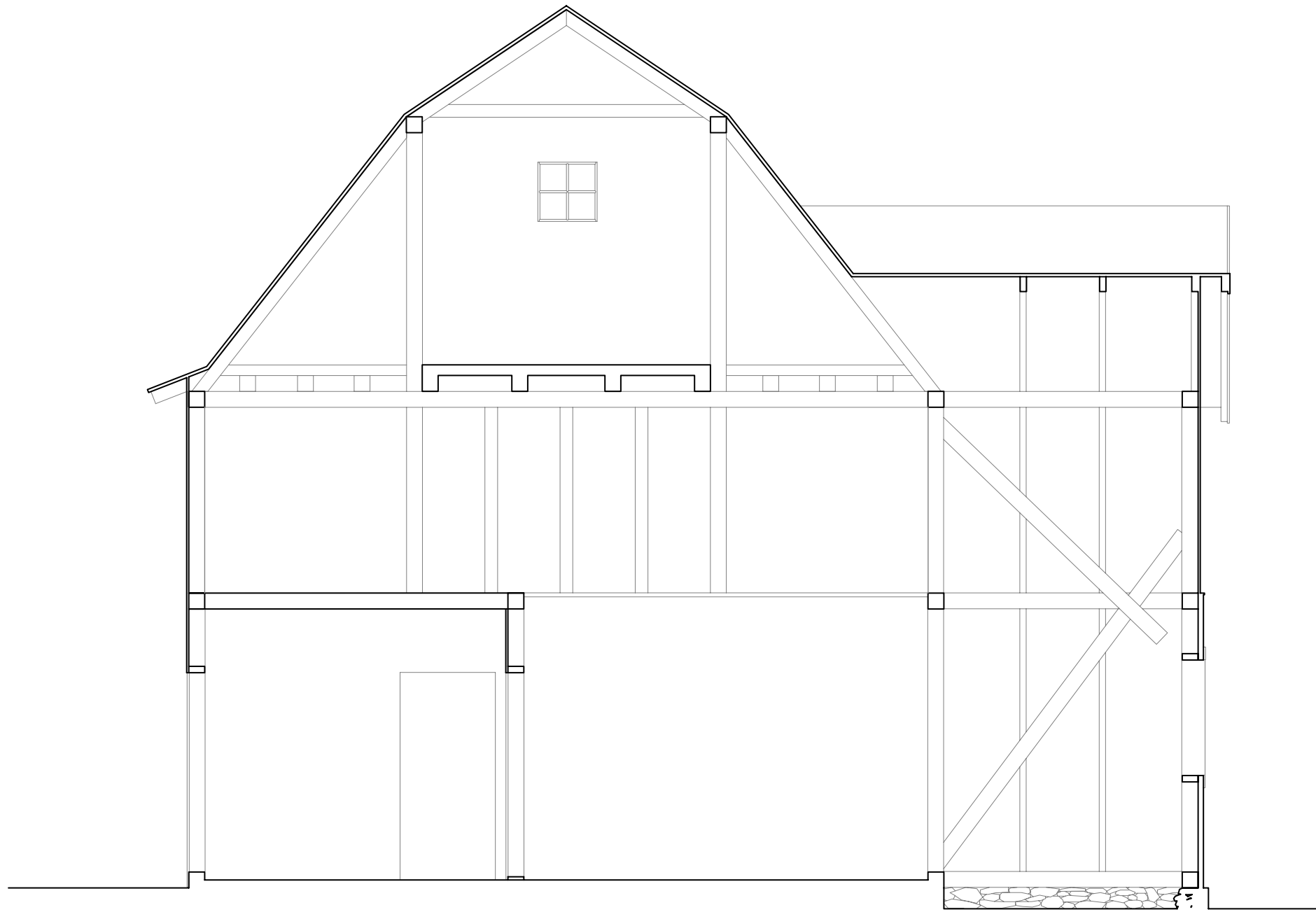
*b*

*c*

*d*

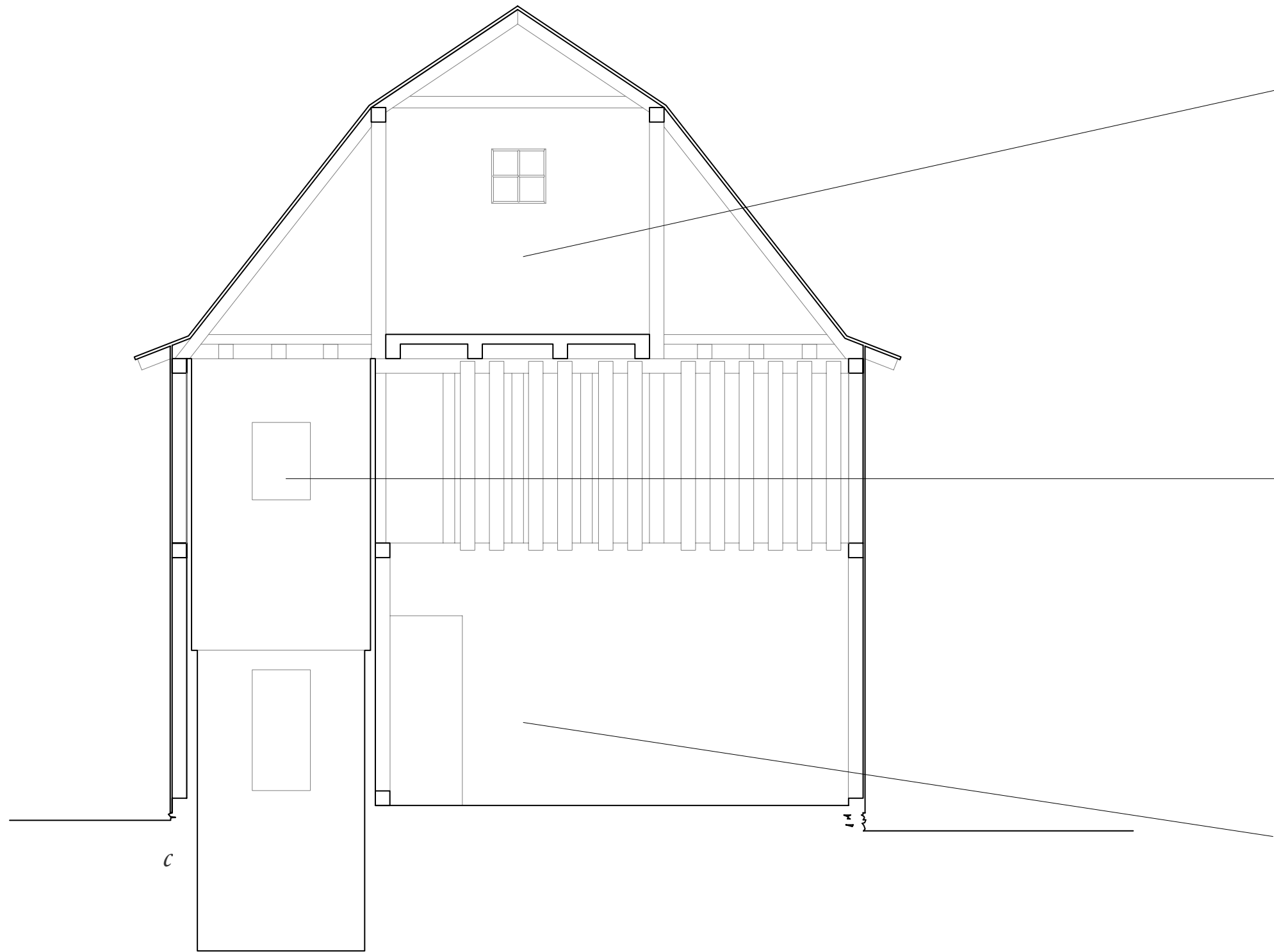


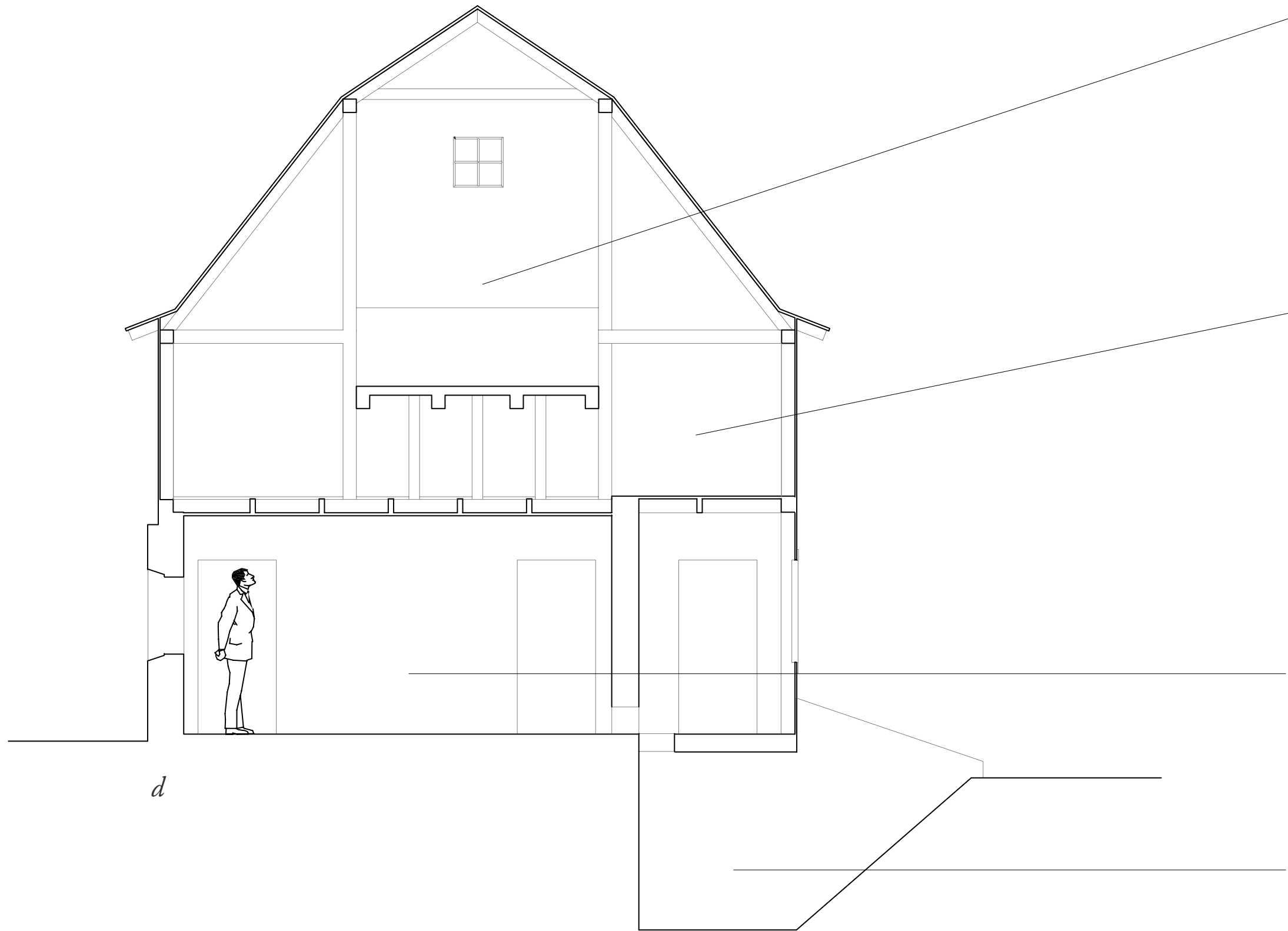




*b*



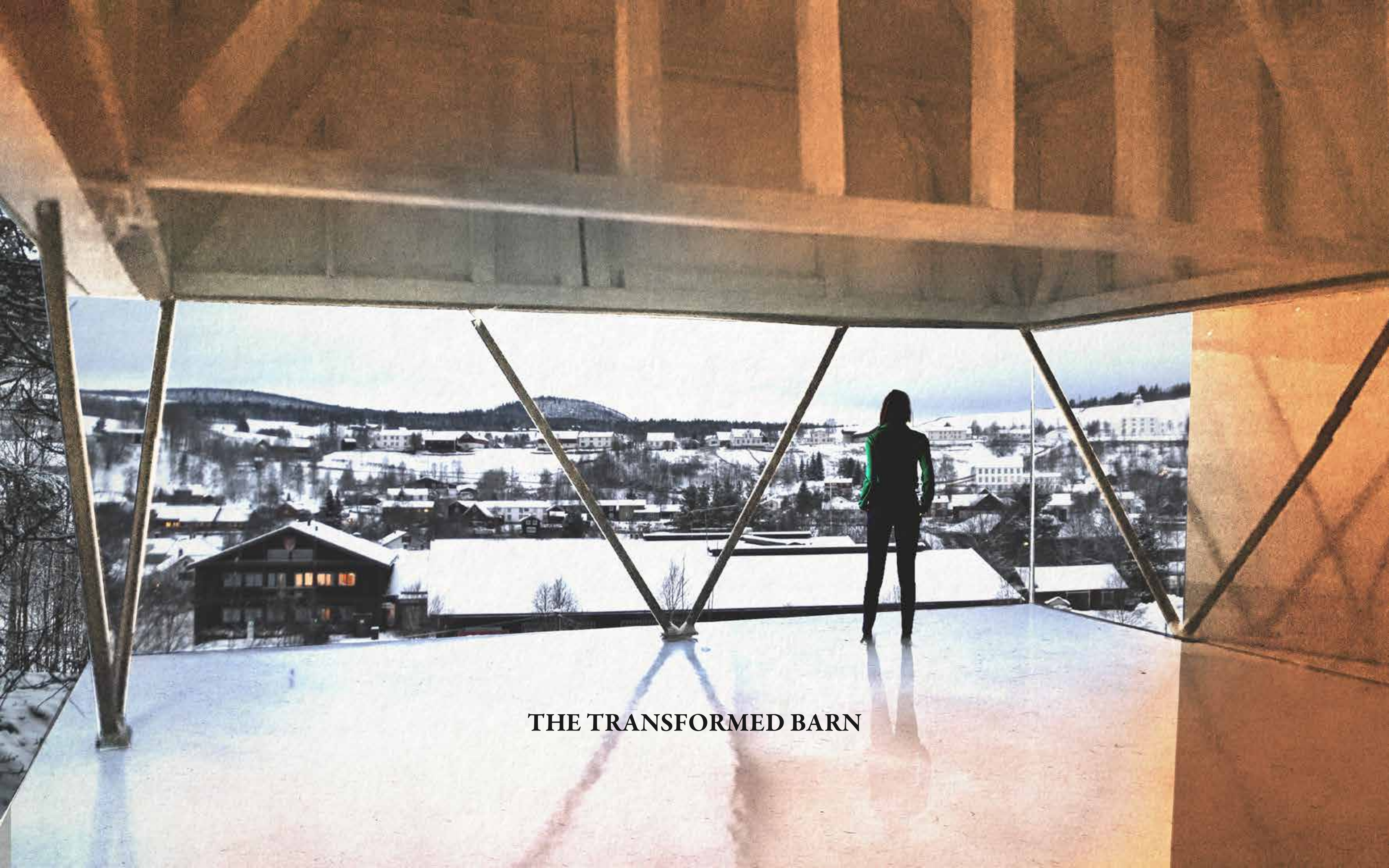




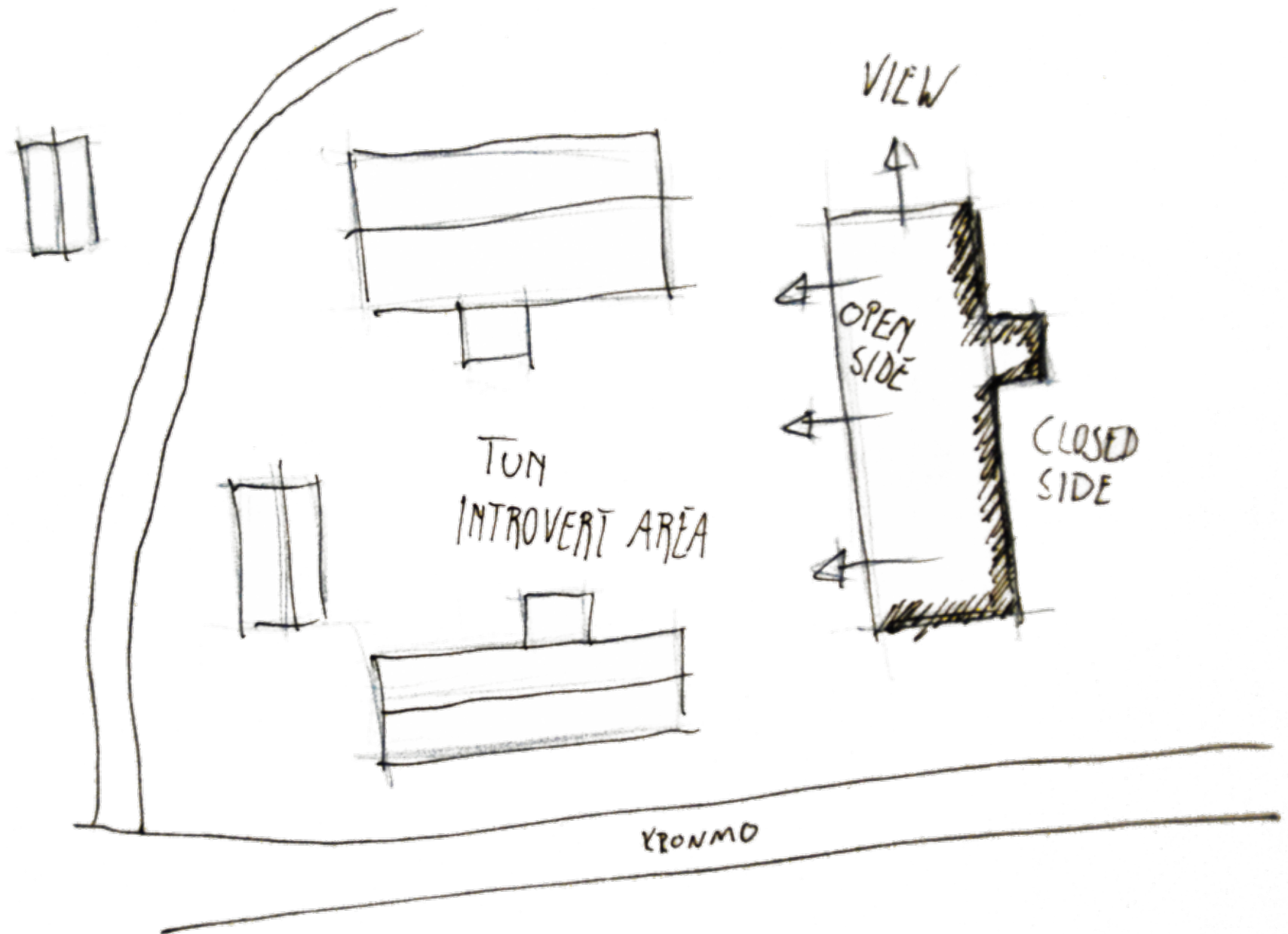




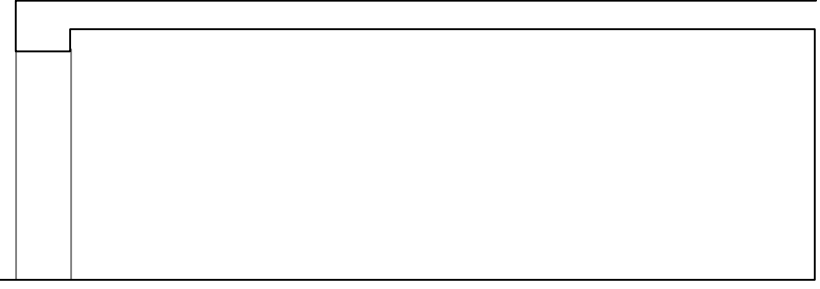




**THE TRANSFORMED BARN**















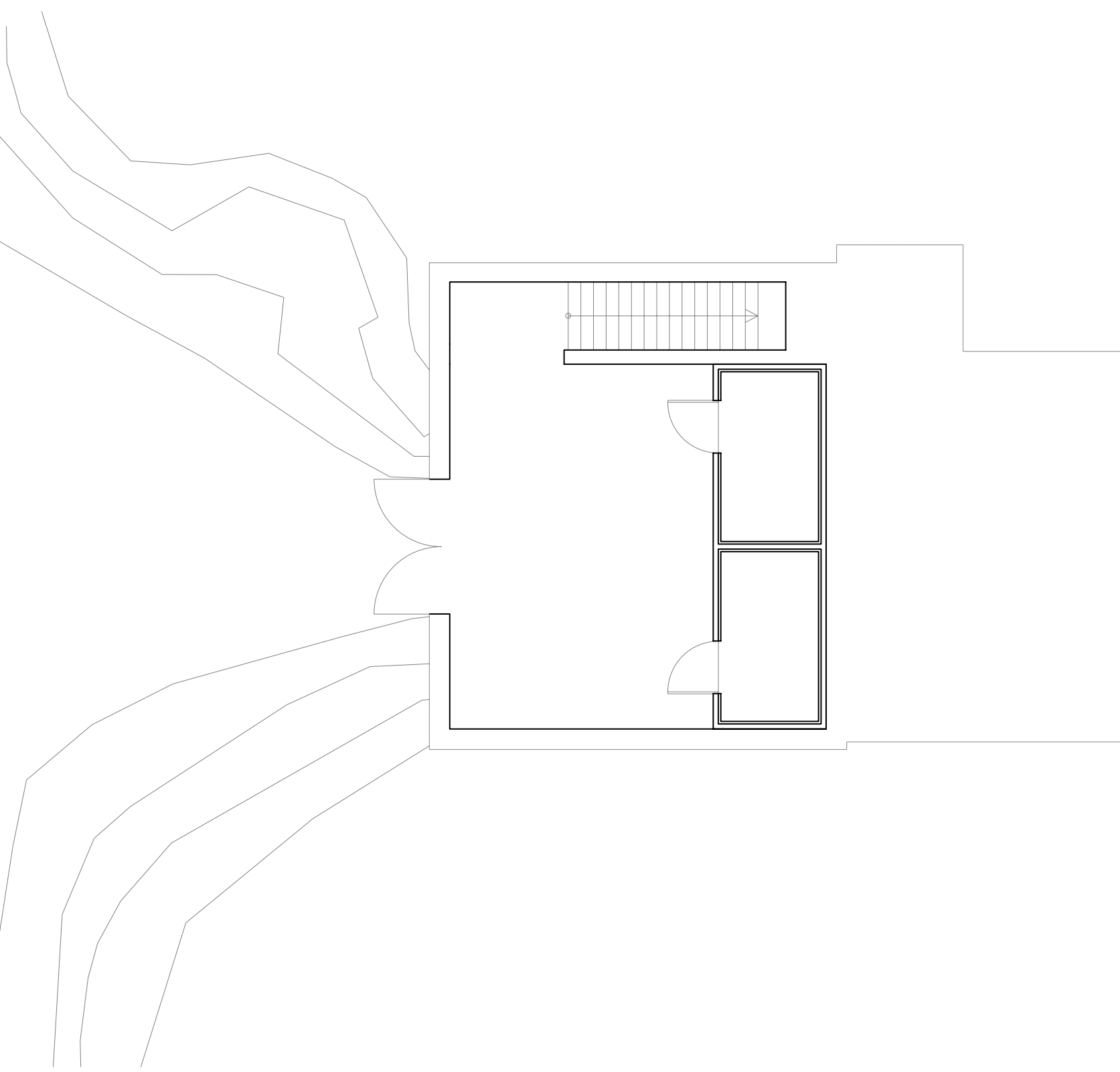


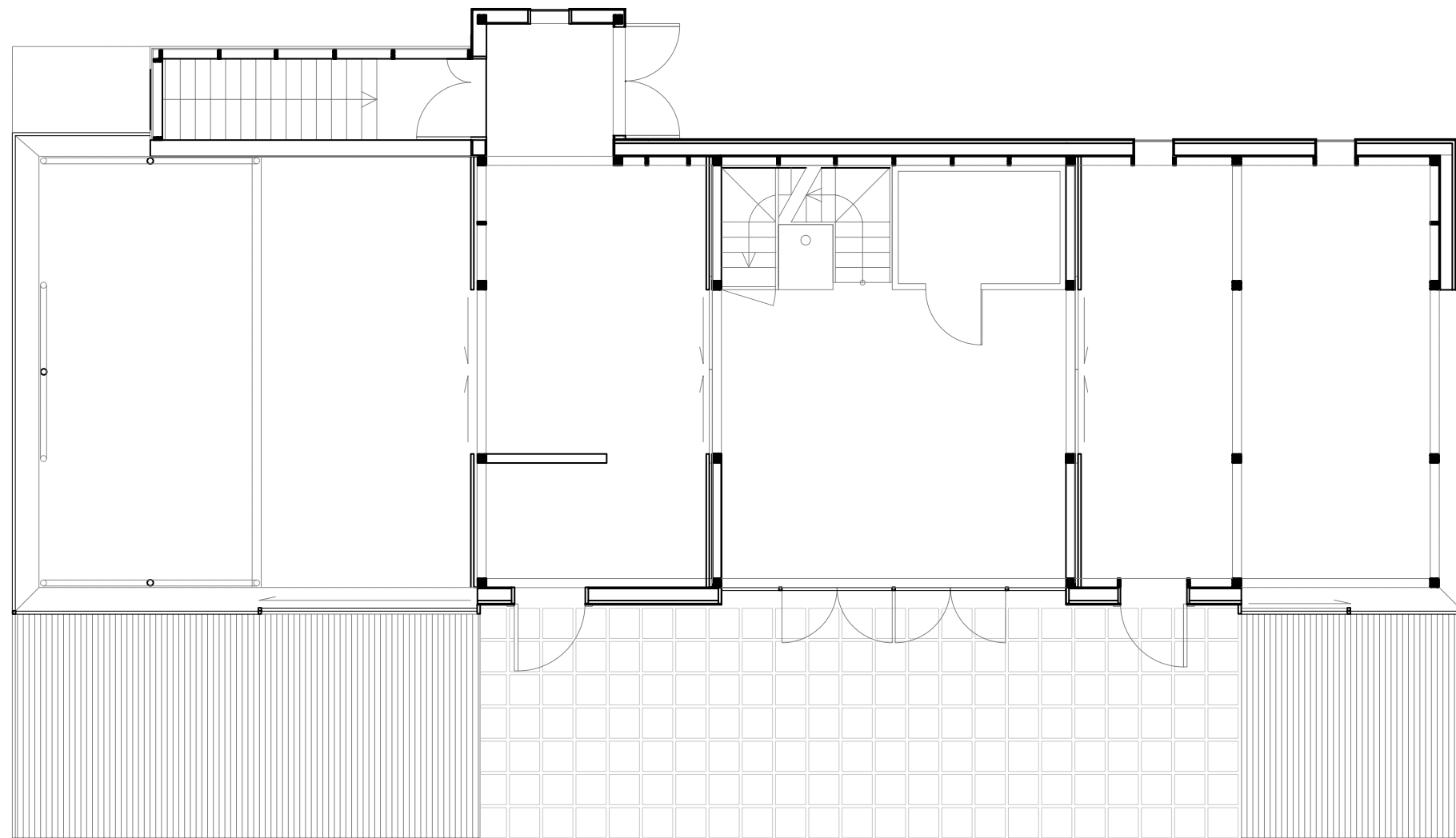




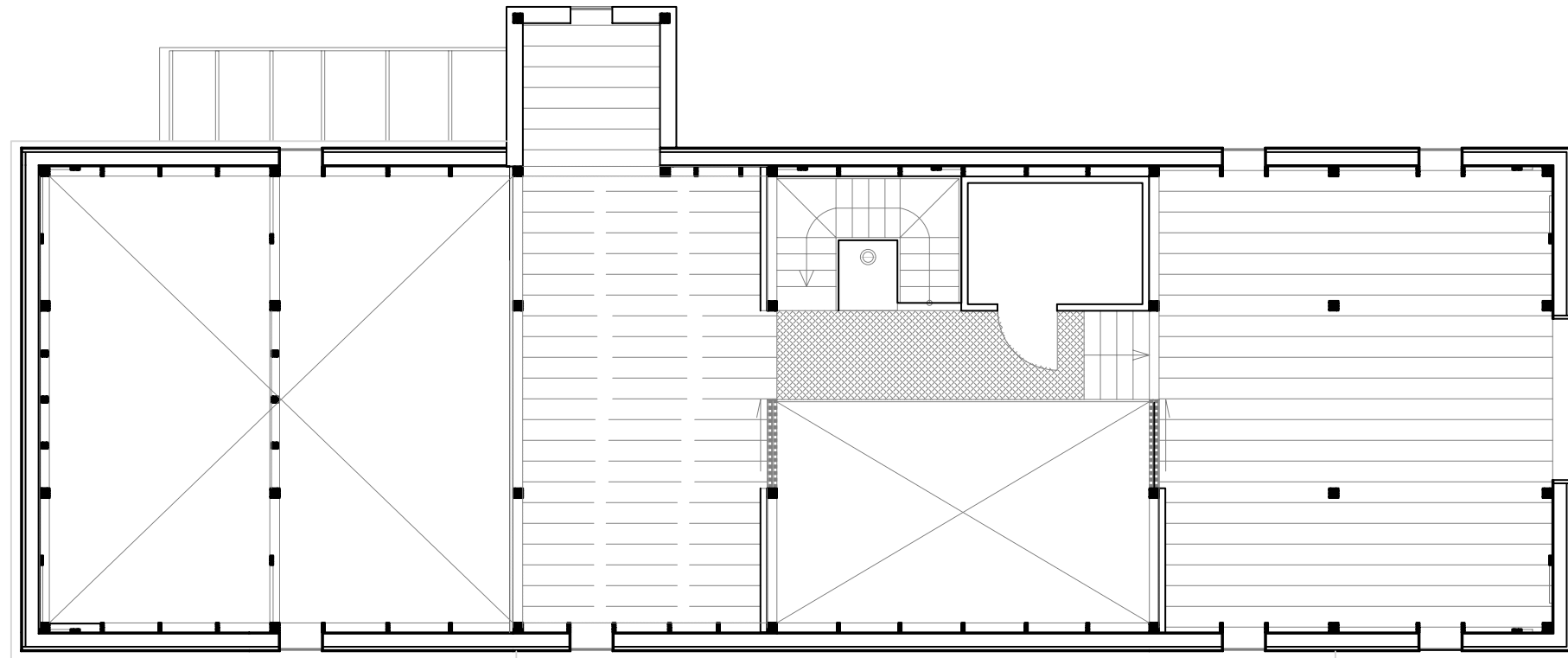


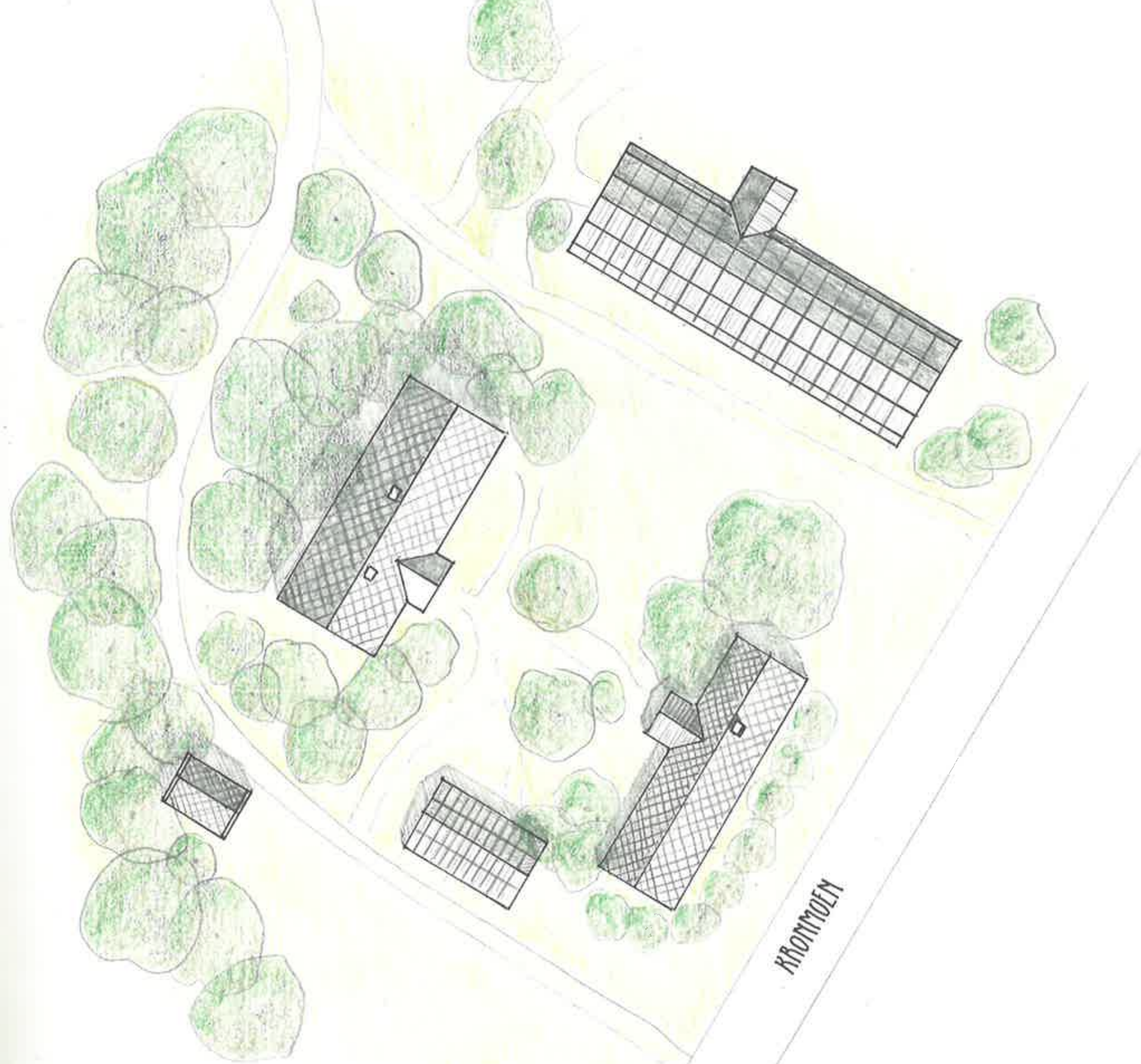






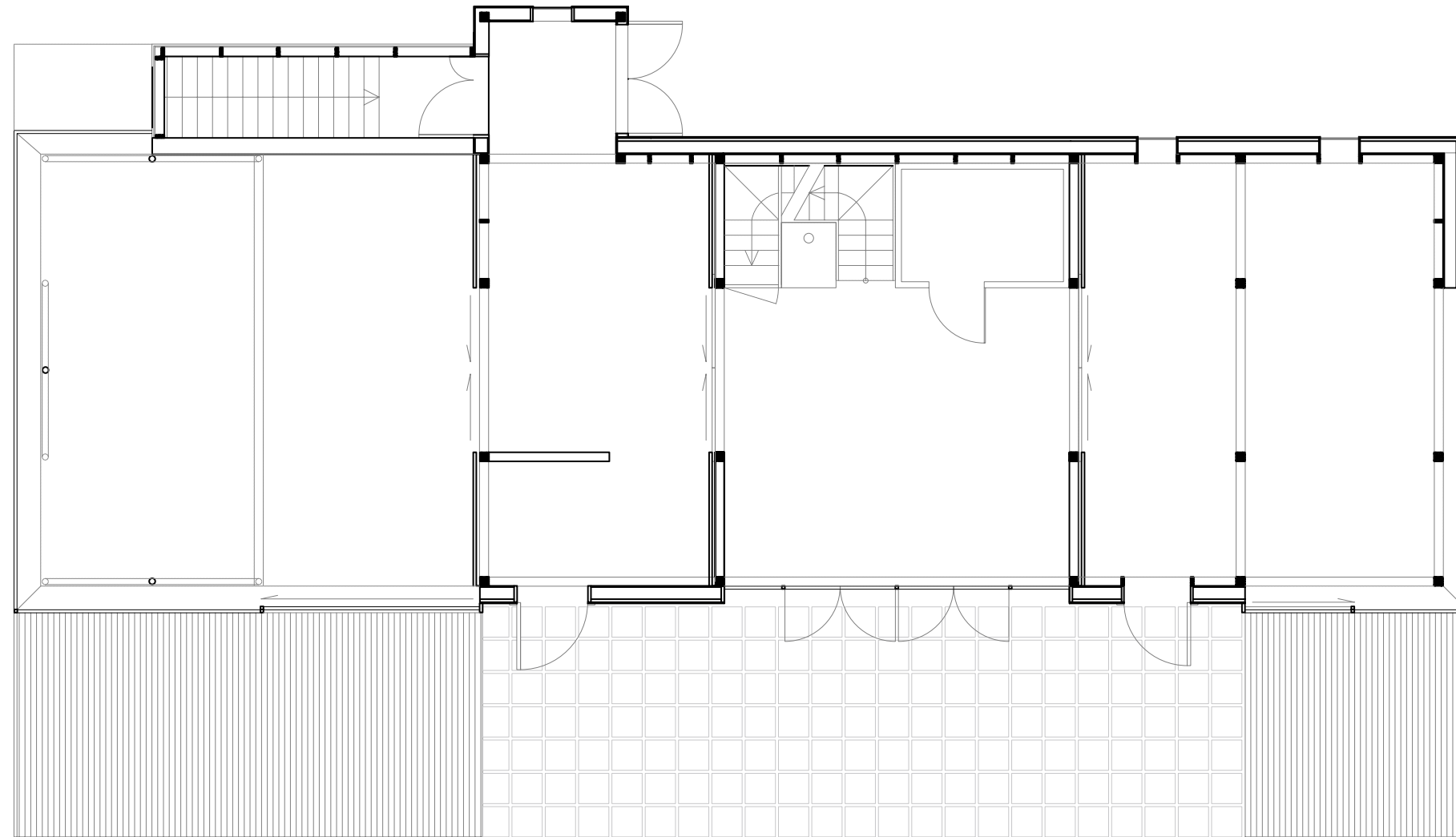


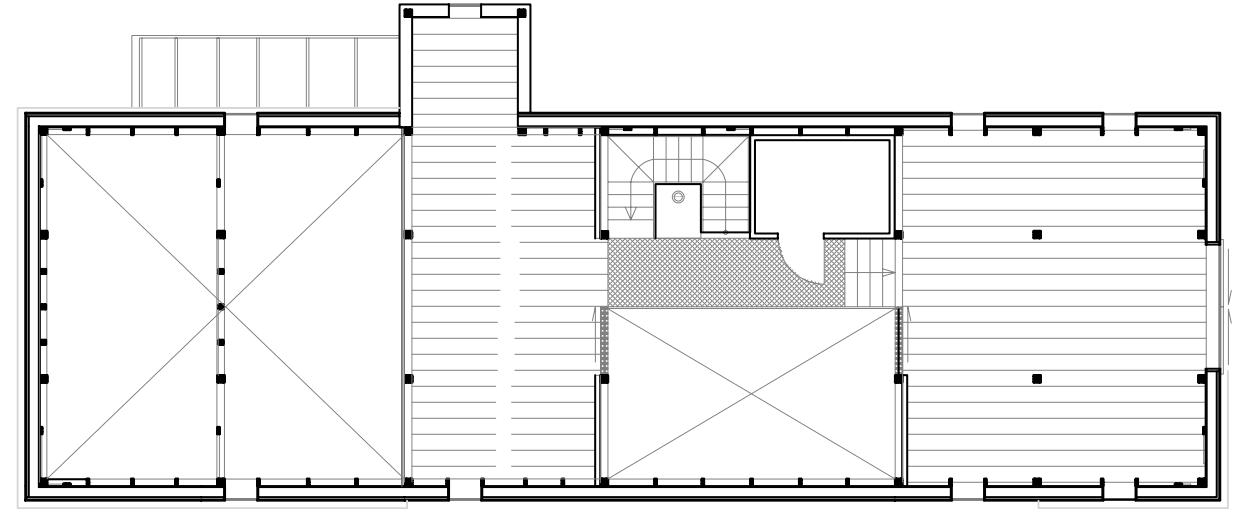
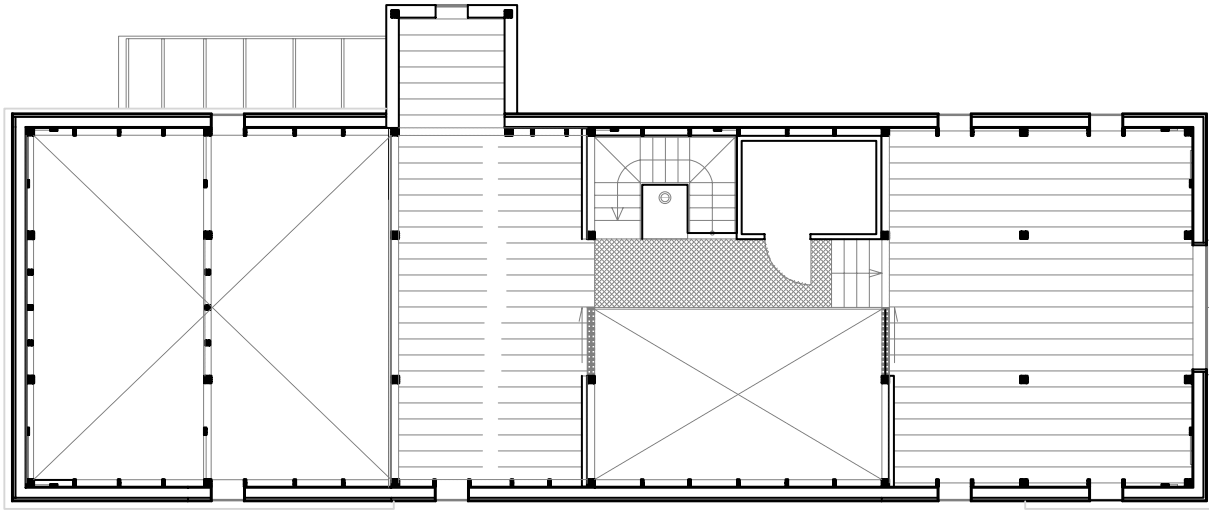




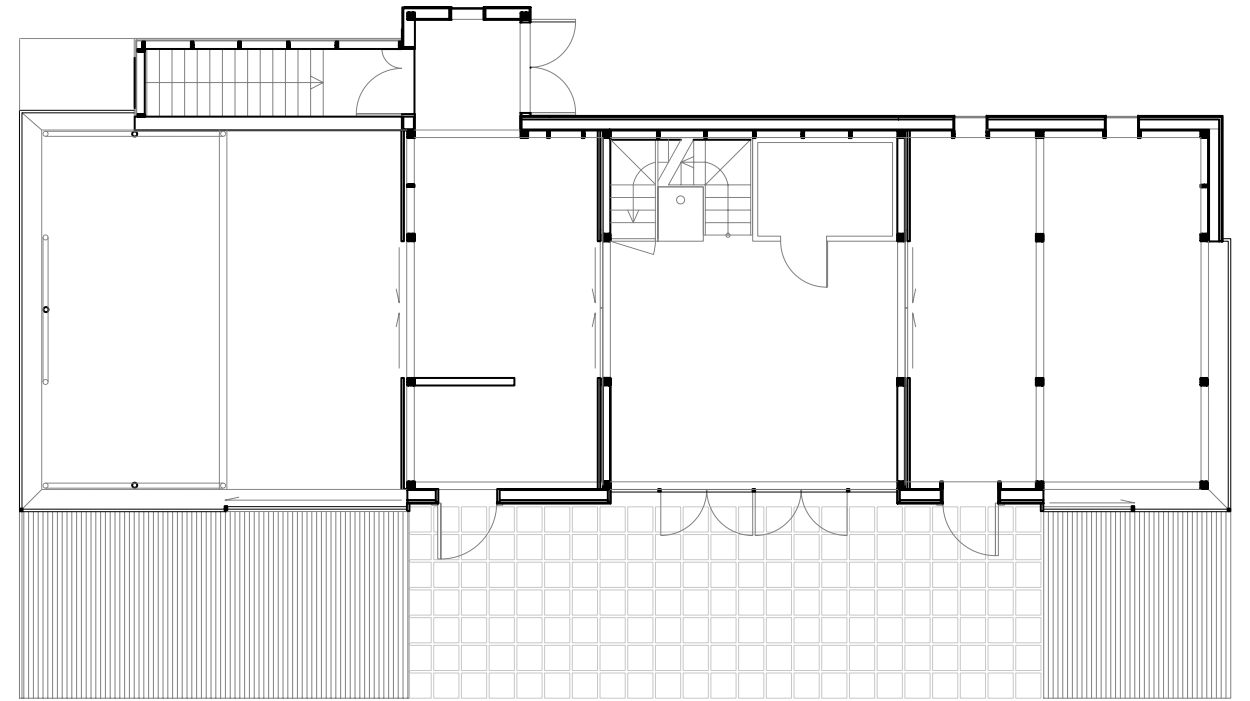
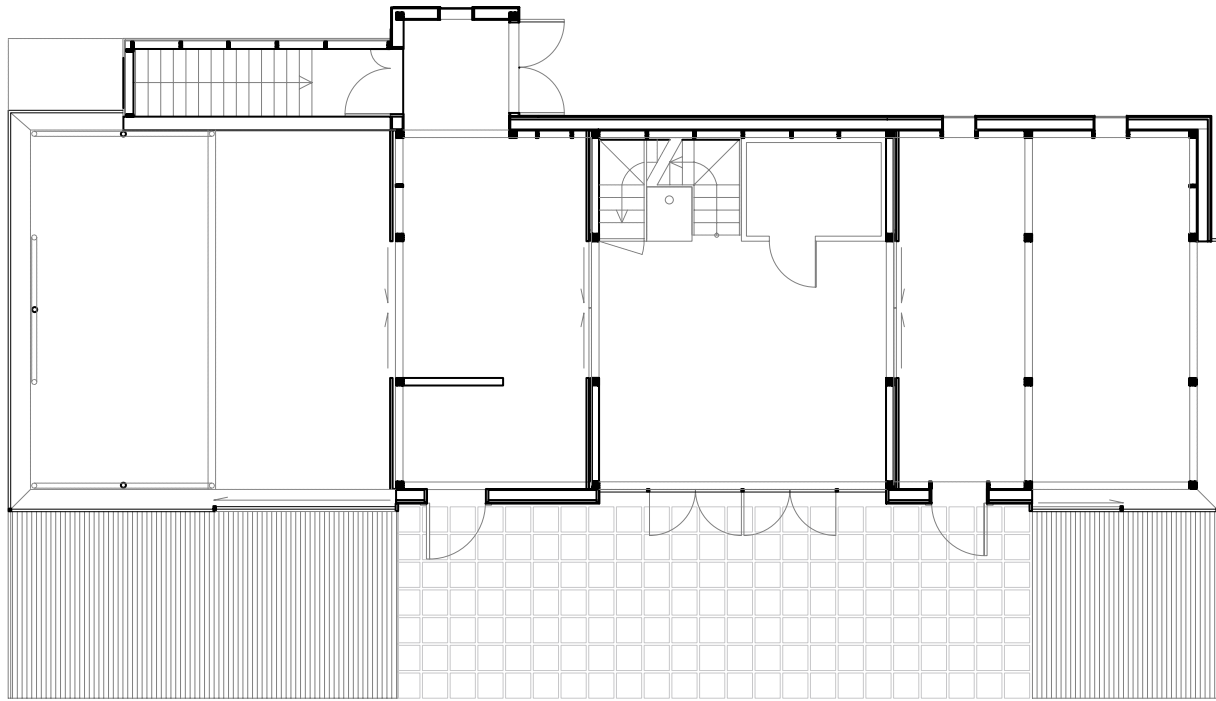
KRONMOEN

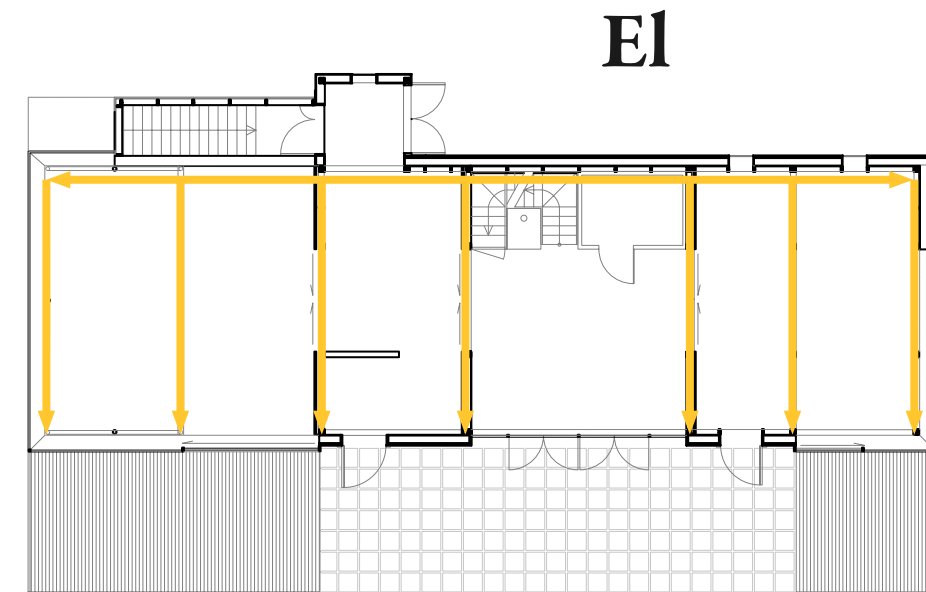
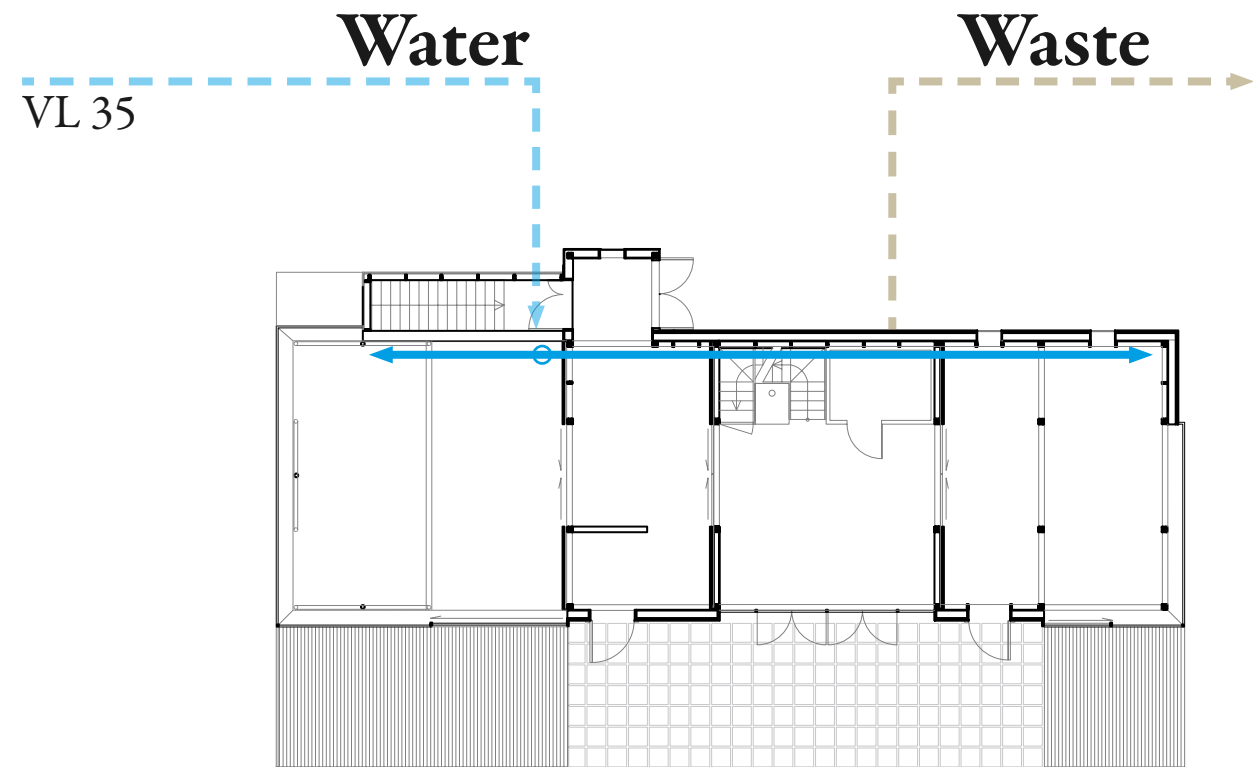
# Sirkulasjon

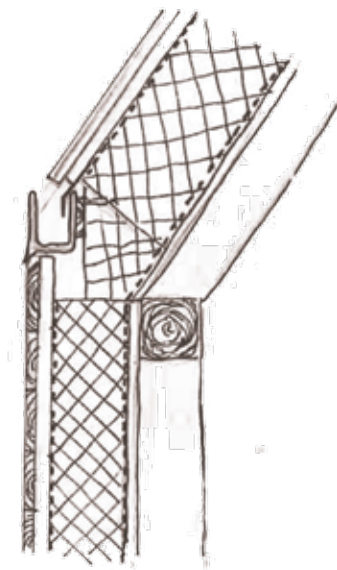
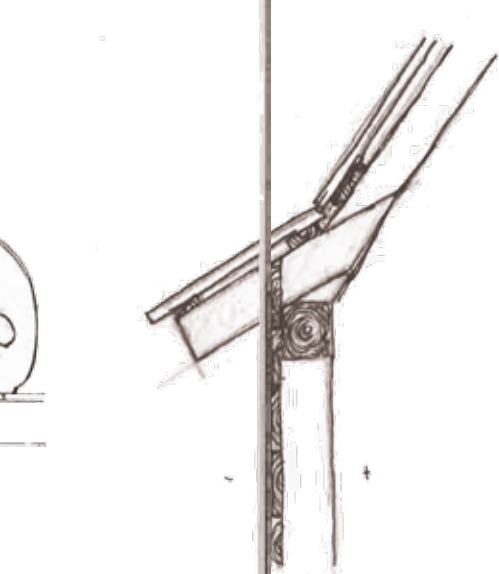
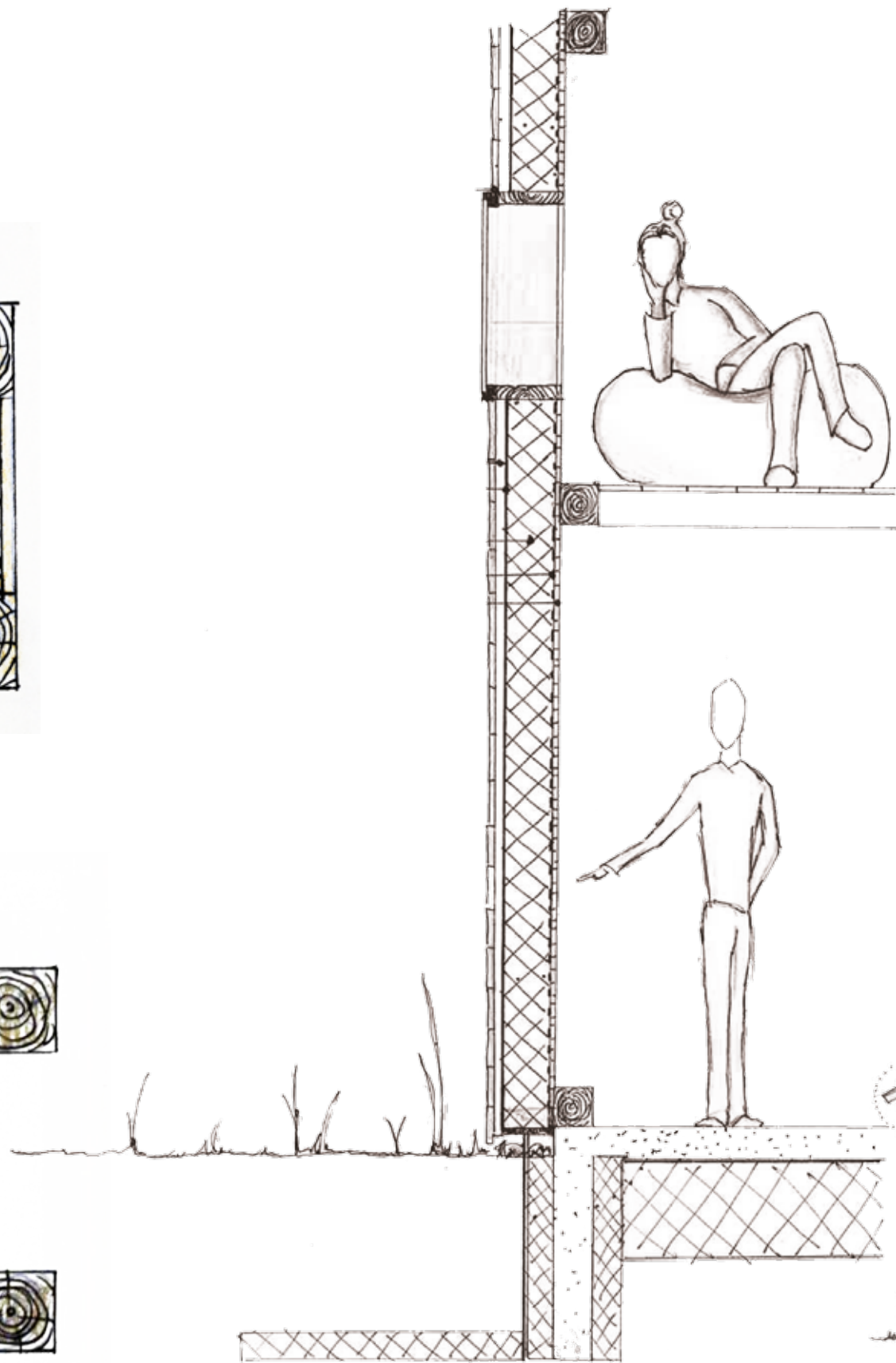
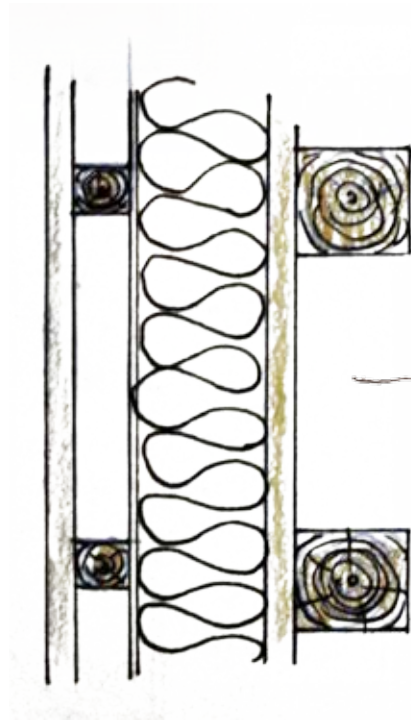
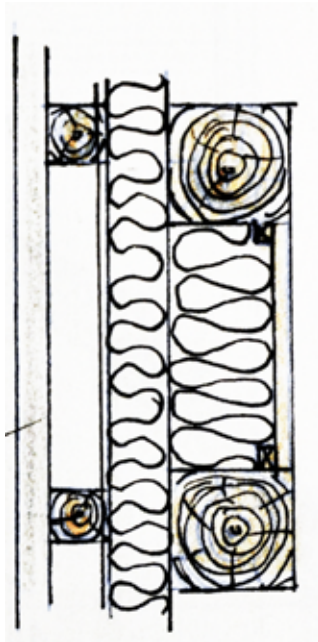




**Examples of uses**







300m  
TAKVSTIKK

INGEN TAKVSTIKK  
INNECT TAKRENNE

