

Ceremonial building

Nina Helene Gjersøe



Model photo of Interior

APPROACH

1, THE BEAUTIFUL

- Relation between construction and expression -

2, THE IMAGE OF THE CHURCH VS. MULTICULTURAL USE

- Spiritually open ceremonial space -

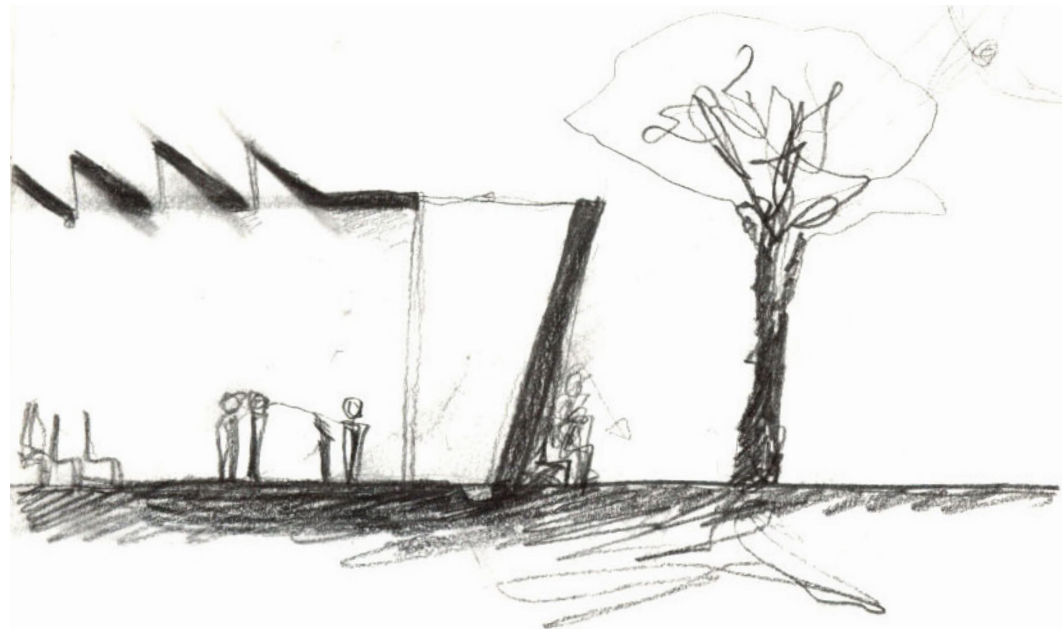
3, TECTONICS

- Brick -

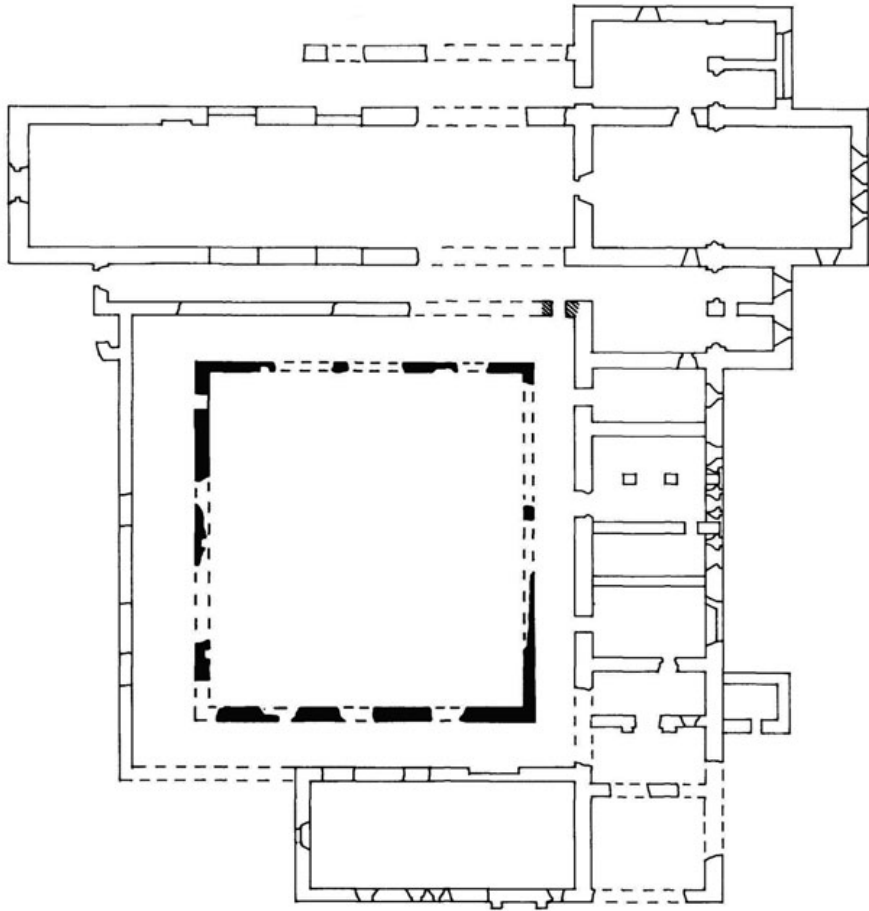


The beautiful - relations between construction and expression

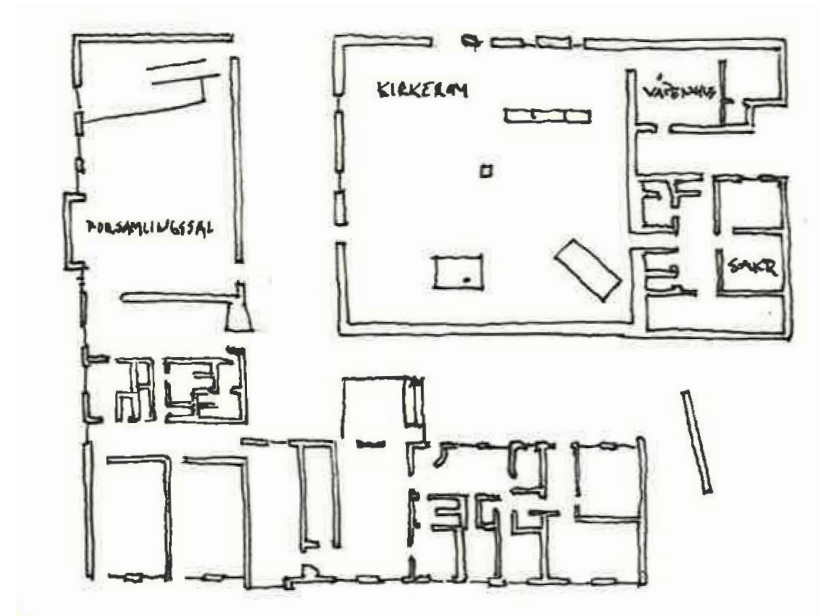
Model photo, study of interior



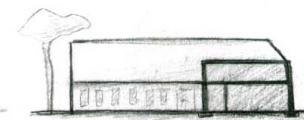
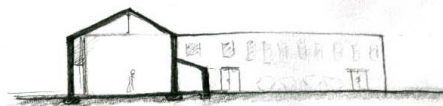
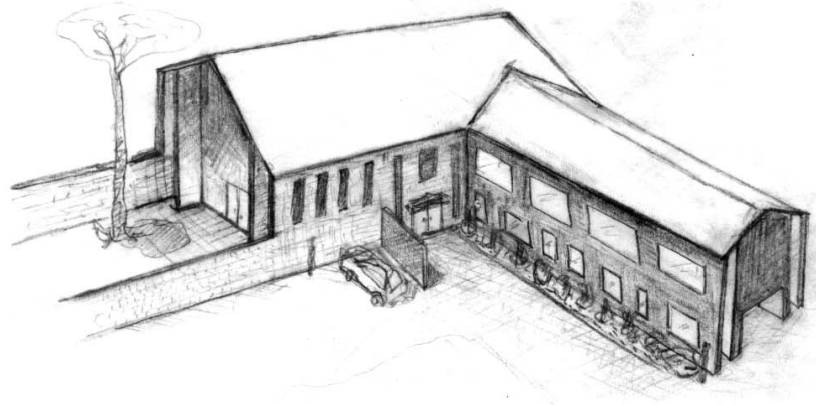
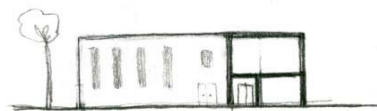
The beautiful - relations between construction and expression



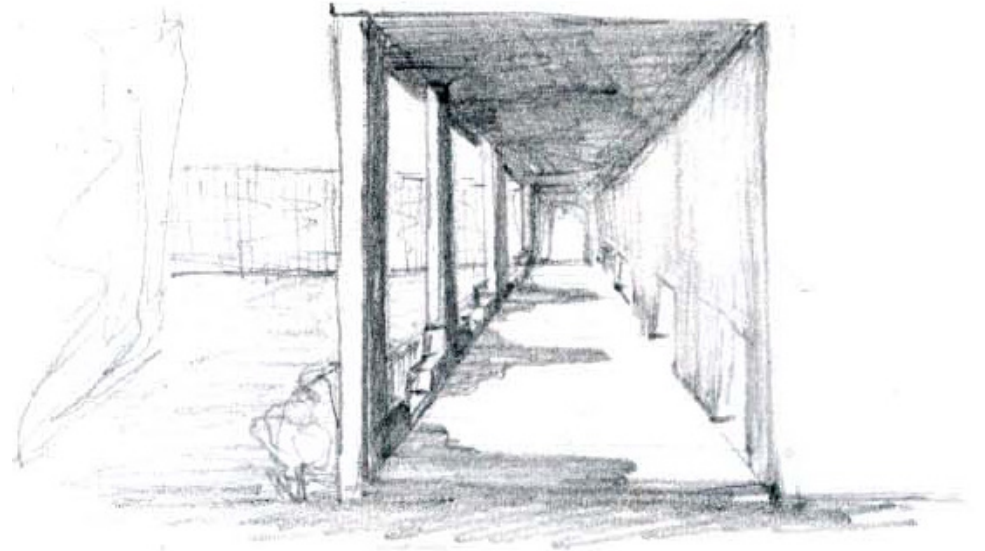
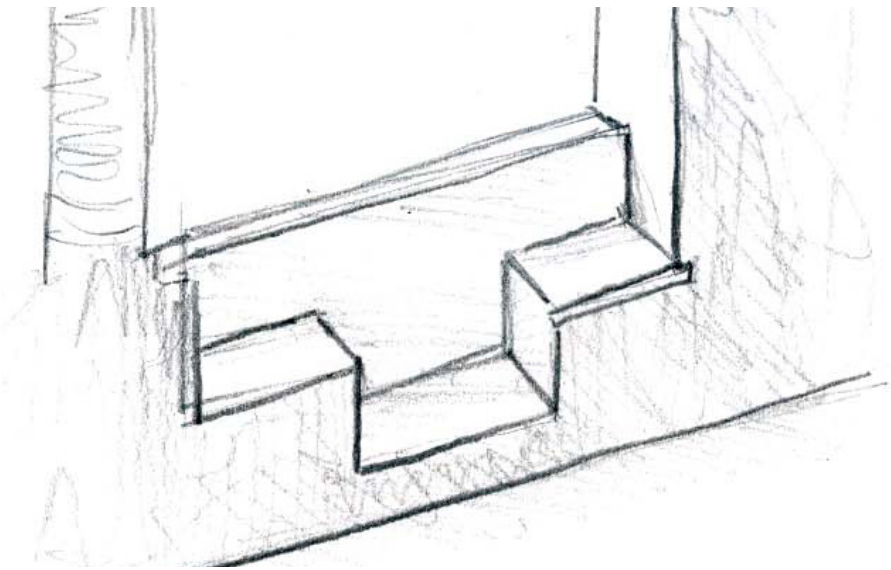
Abbeyknockmoy Cisterian Monastery. Ireland 12th century



St. Petri Church, Klippan 1962-66. Arc: Sigurd Lewerentz



The image of the church vs. multicultural use - a ceremonial building for everyone



**Grunnlovsforliket -
The constitutional provision 21rst may 2012**

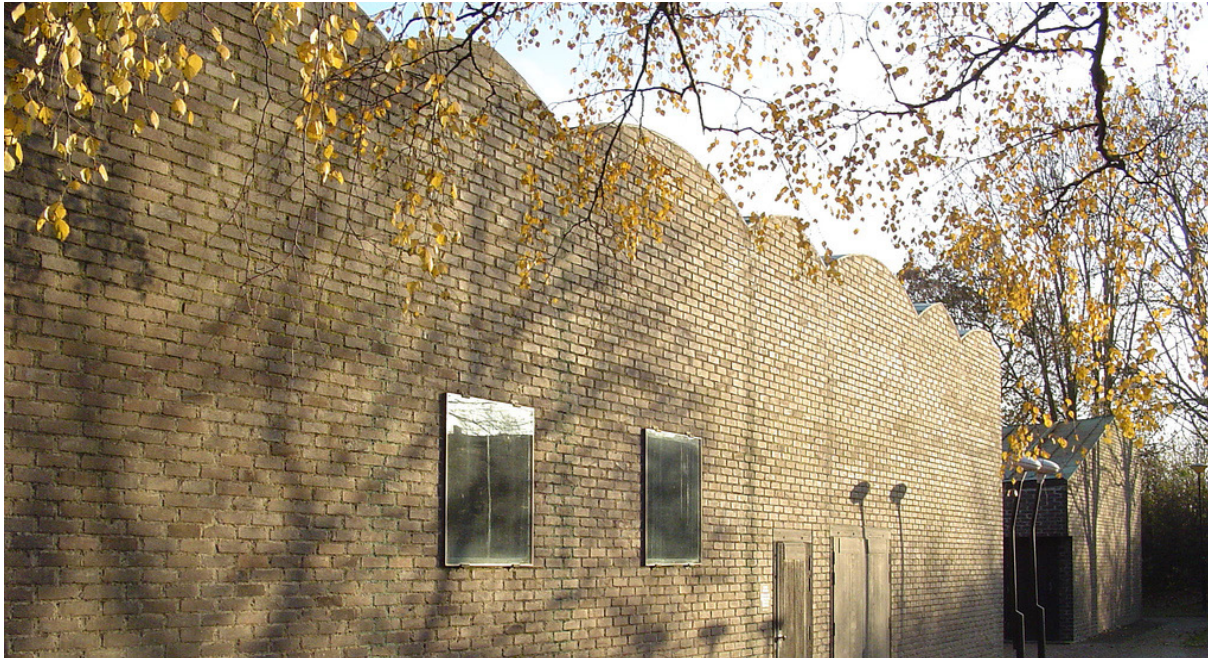
9 of 10 funerals is still organized by the church, but only half of the population wish for this according to Norstat August 2017.
63 % of the population believes that the municipality should offer spiritually open ceremony rooms.



Typical buildings for spiritually open ceremonies



Harlunda Church, Gothenburg 1959. Arc: Peter Celsing



St. Petri Church, Klippan 1962-66. Arc: Sigurd Lewerentz



Viewing room at Asker Crematorium, Asker 2000. Arc: Carl Viggo Hølmekbakk



Dominikuszentrum, Munich 2008. Arc: Andreas Meck

Premises

Location in typical small town

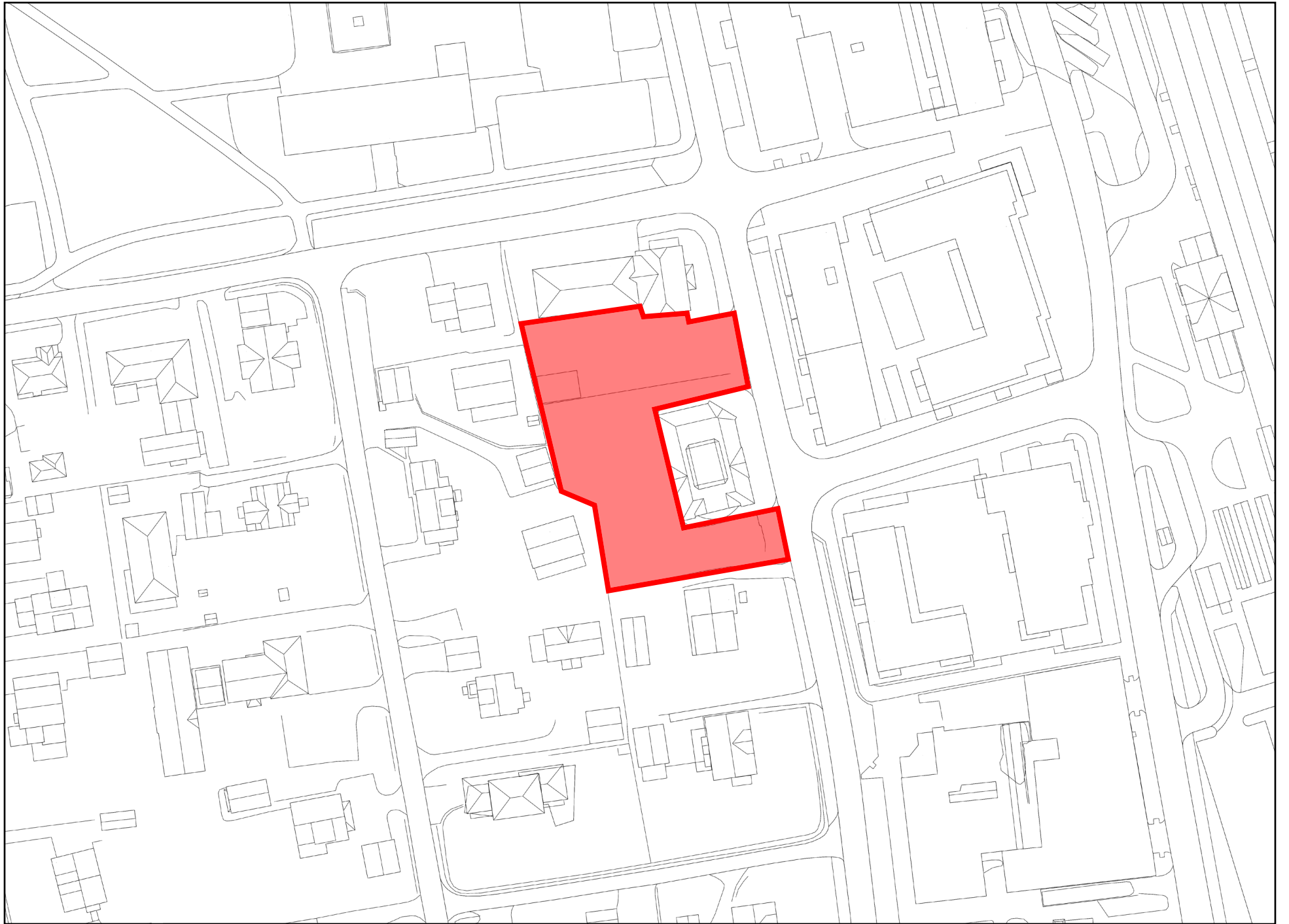
Regulations

Light

Site Inspections







REGULERINGER

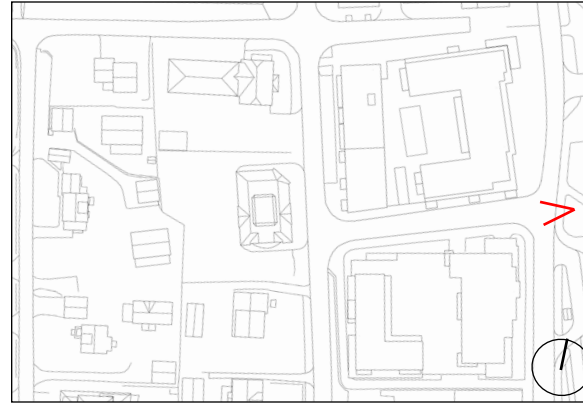
... og andre fakta.



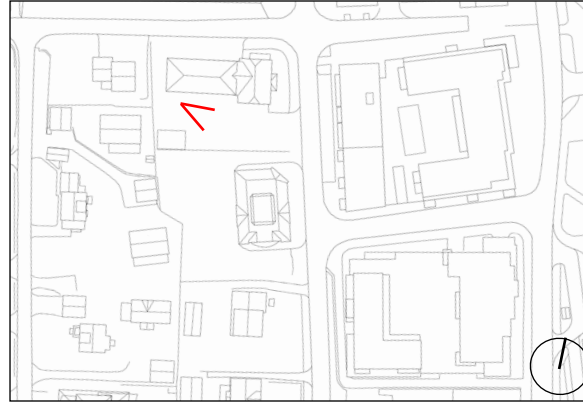
- Bolig/forretning/kontor
- Bolig
- Forretninger/kontor
- Område for offentlige bygninger
- Torg/parkeringsplass
- Kpl-15-27, Pbl 2002.
Formål: SENTRUMSFØRMÅL.
- Miljødirektoratet. Store, gamle eike-trær.
(VO3-Huic eiker). Verdi: Lokalt viktig.
FORRETNING
- 7 Moerveien 7. Solgt for 15 000.000, den 18/7-17 til
Moerveien AS (Eiendomsandel og -utleie).
(Kjell Krichfferien) TRTOR
- 4 Skoleveien 4. Eies av As Kommune.
As kommunale dagenter for mennesker med psykiske lidelser.
- 2 Skoleveien 2. Eies av Skoleveien 2, AS
(Eiendomsandel og -utleie) (Per Ege Christensen).
TRTOR (TRTOR TRTOR TRTOR)
- As kommune (appert veig og gatedan).
MULIG PLASSDANNELSE
- Særlig viktige gangforbindelser i As Kommune



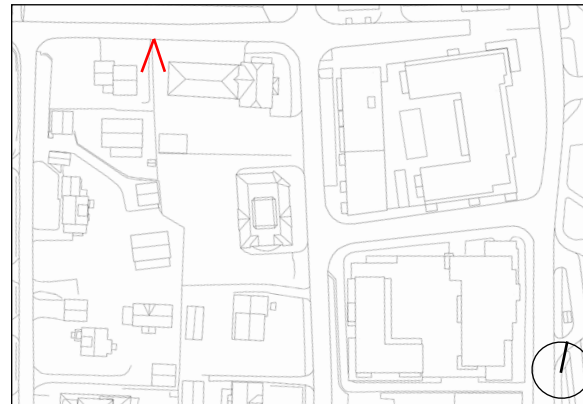
Sight-line from the train station



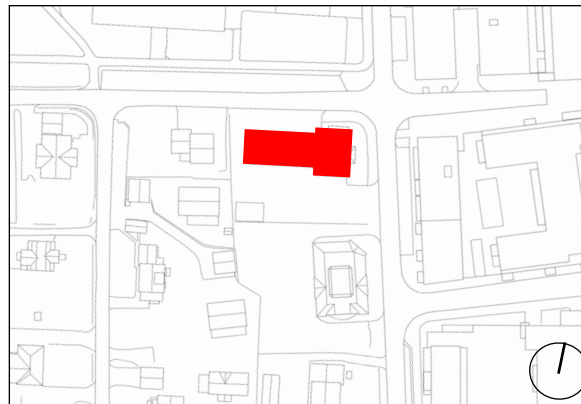
Standing at the site looking east towards Moerveien

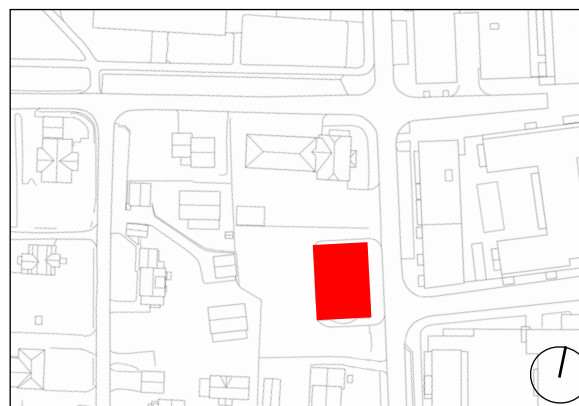


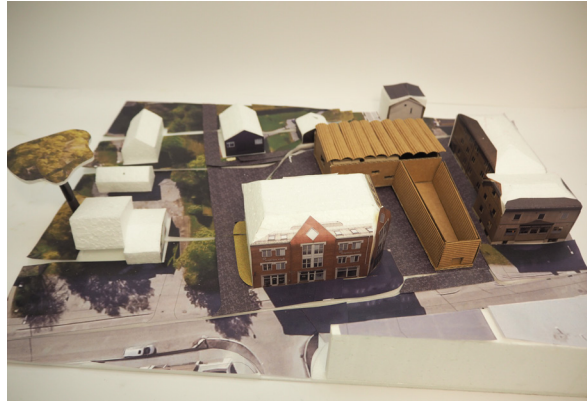
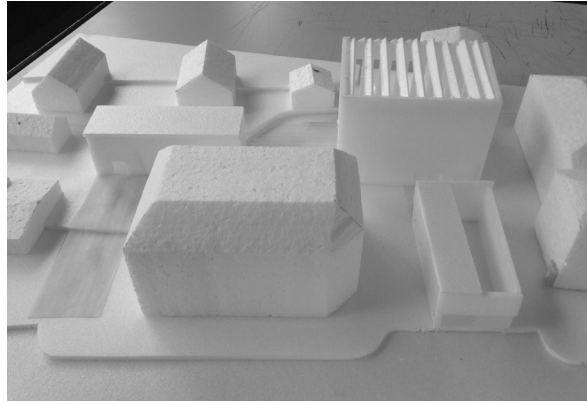
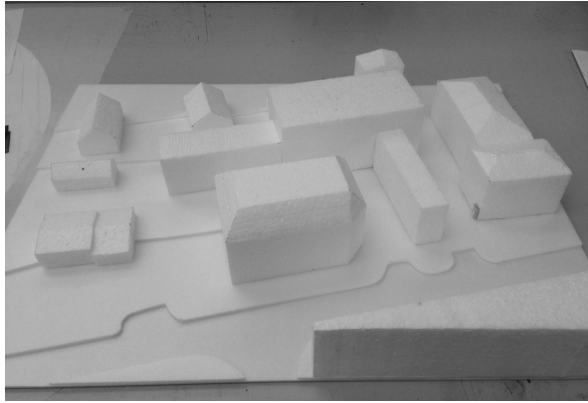
Possible delivery entrance from Skoleveien

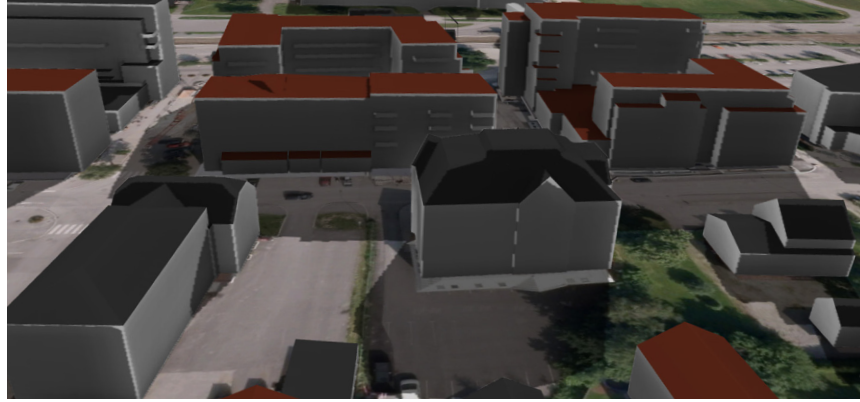


Wiepoints

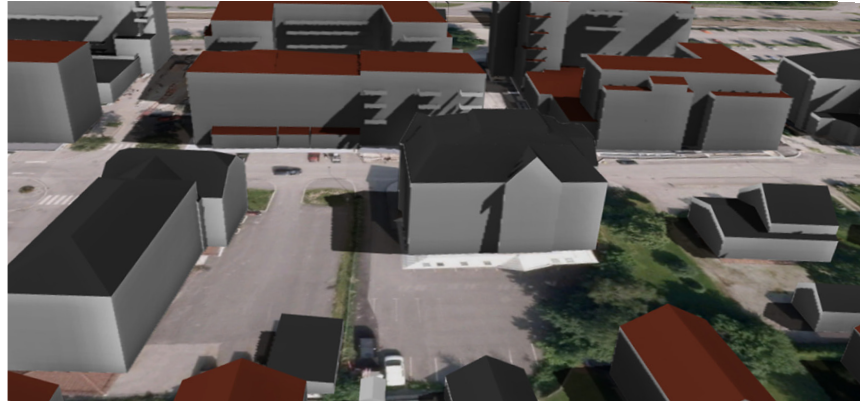




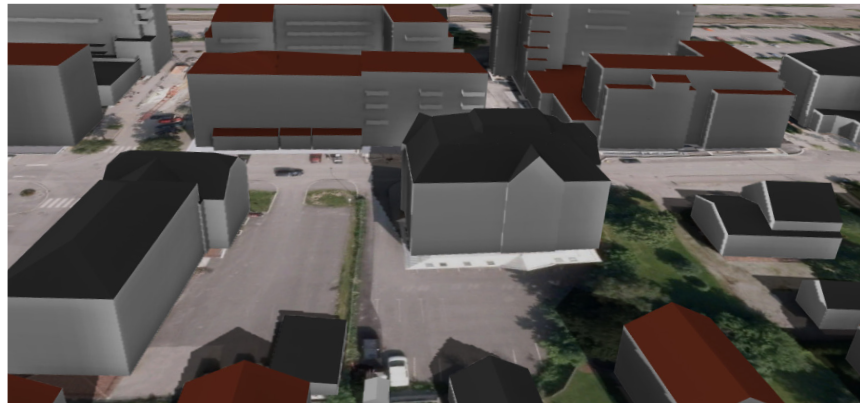




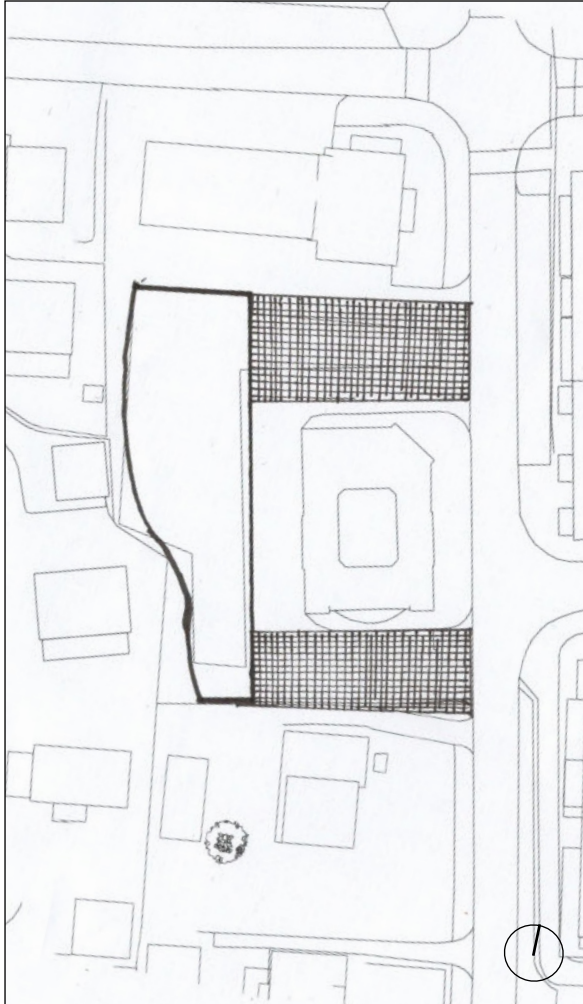
08:00



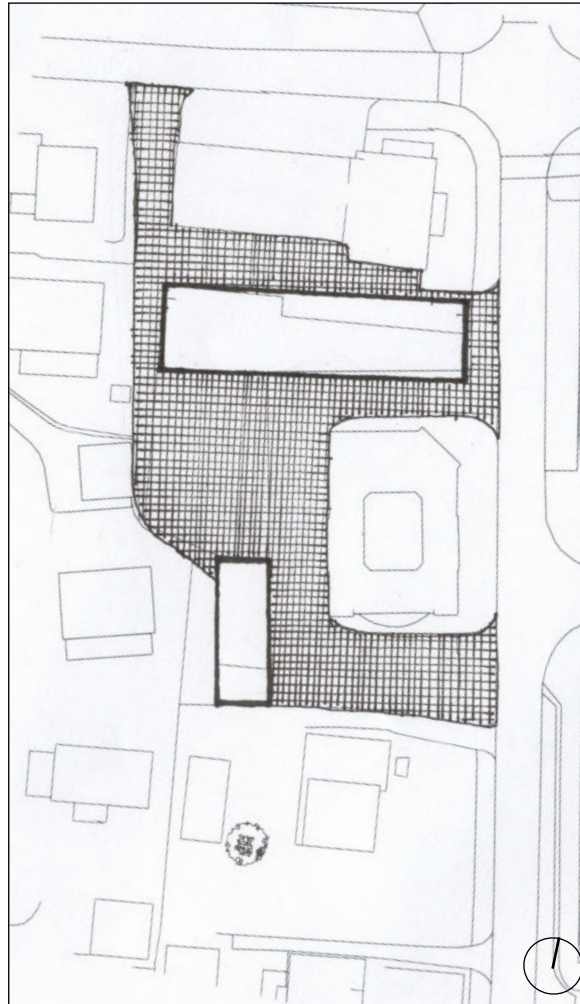
12:00



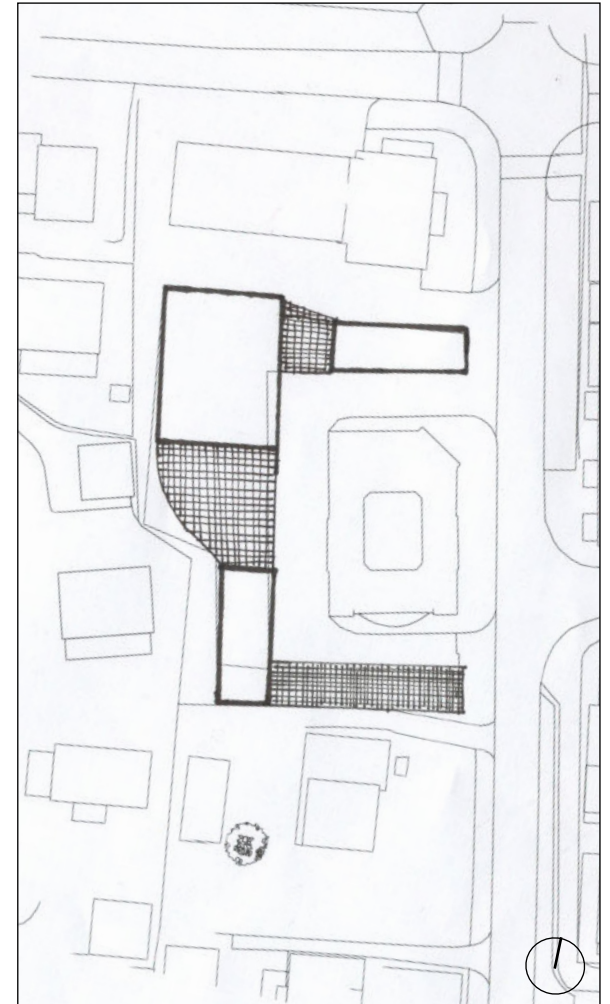
16:00



Proposal 1; One building + two squares

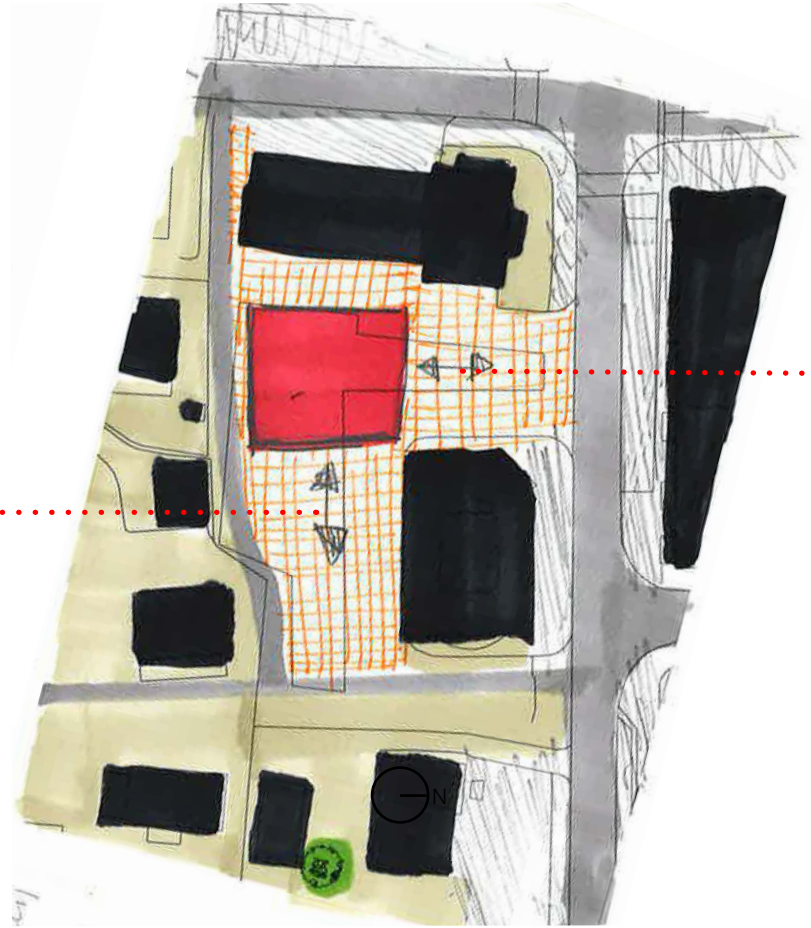


Proposal 2; Two buildings + city floor in brick



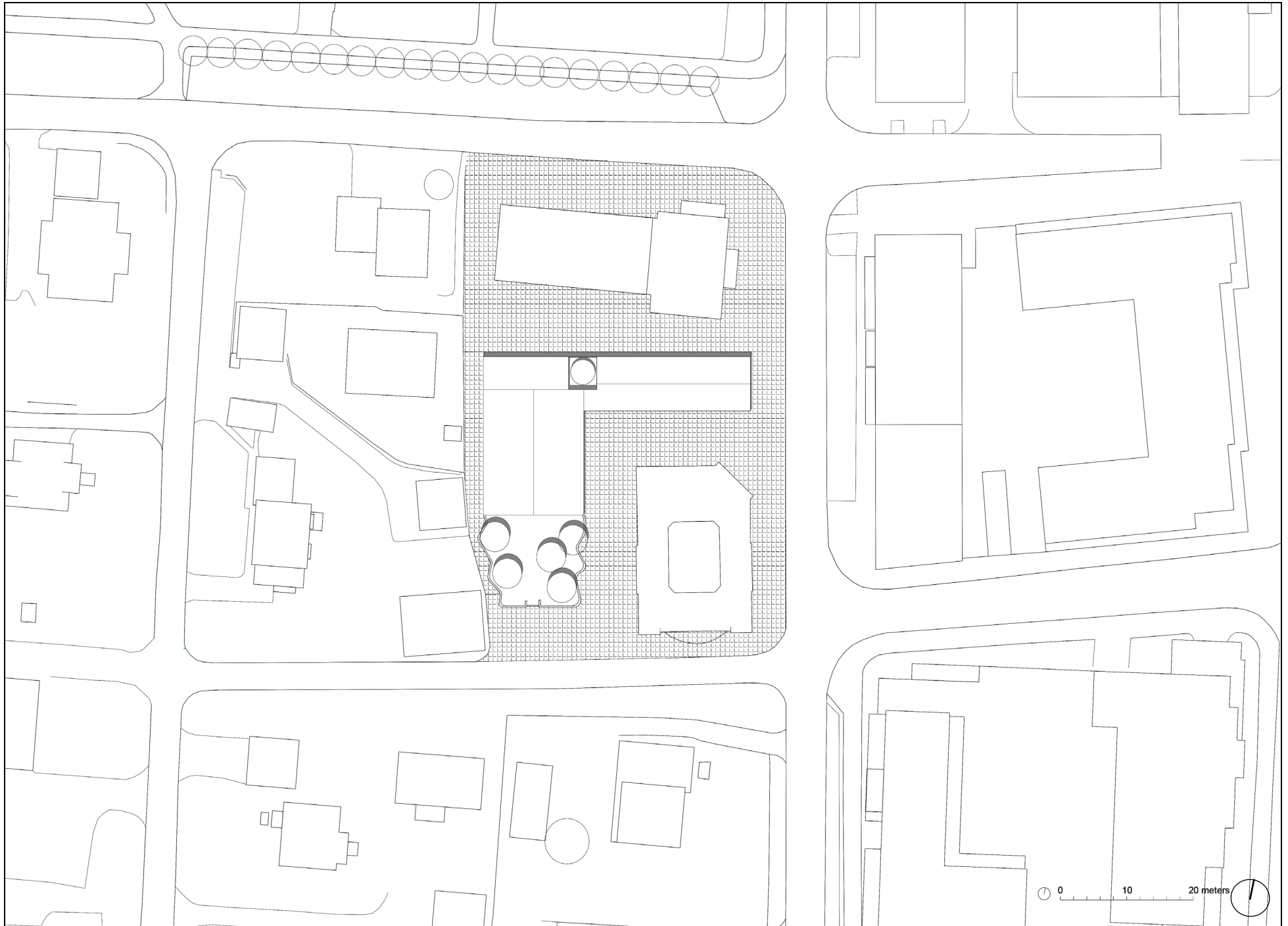
Proposal 3; Three buildings + courtyards

Ceremonial orientation
to the new street in south

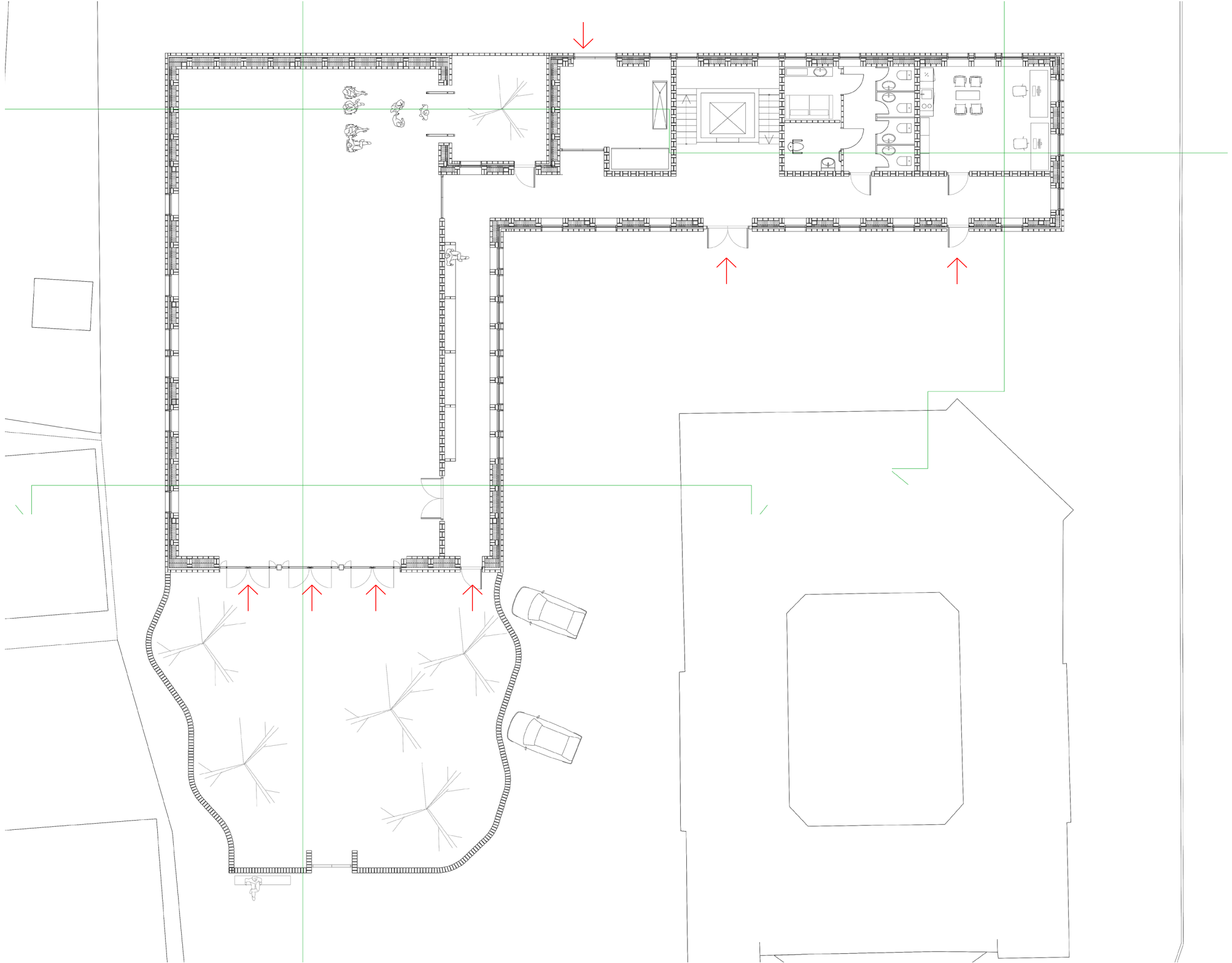


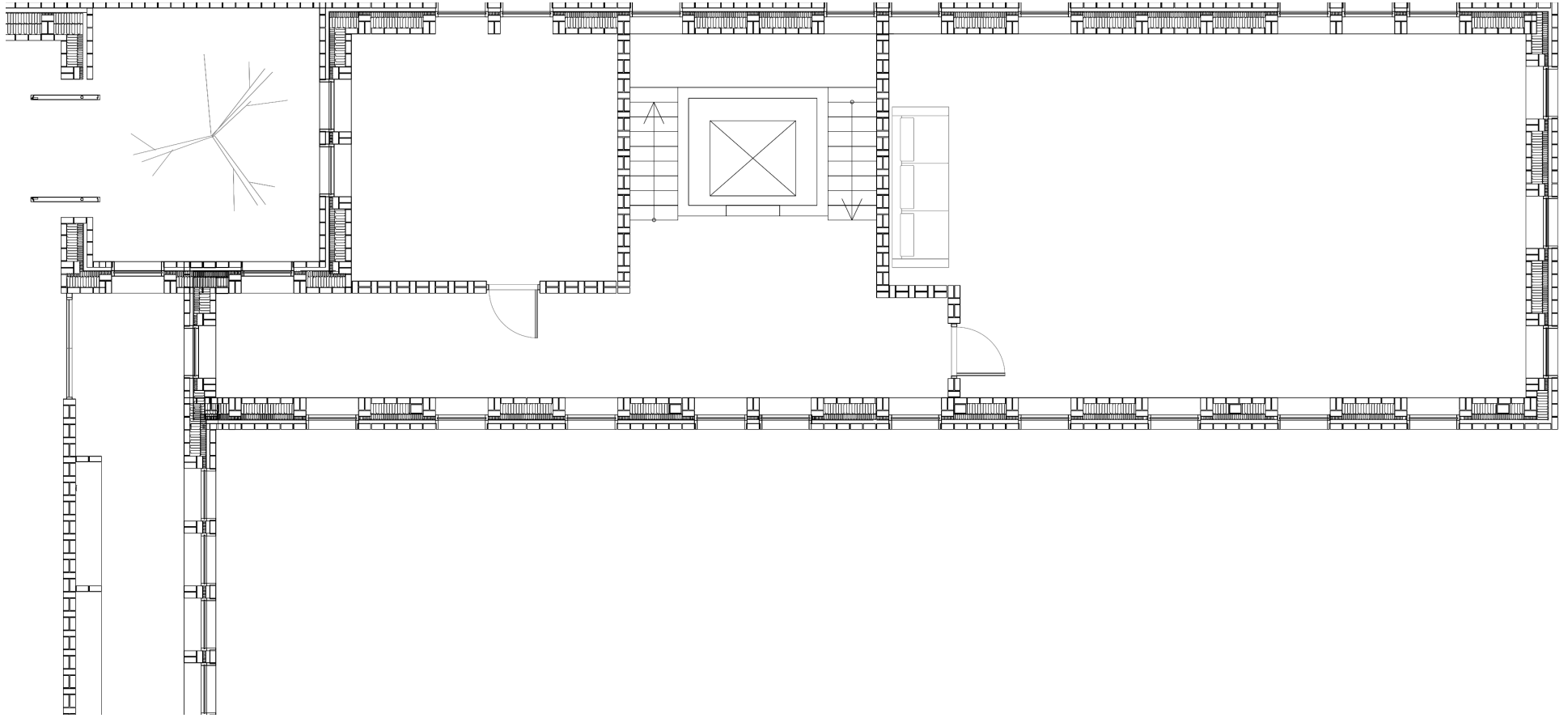
Public orientation
to the main street.

New street

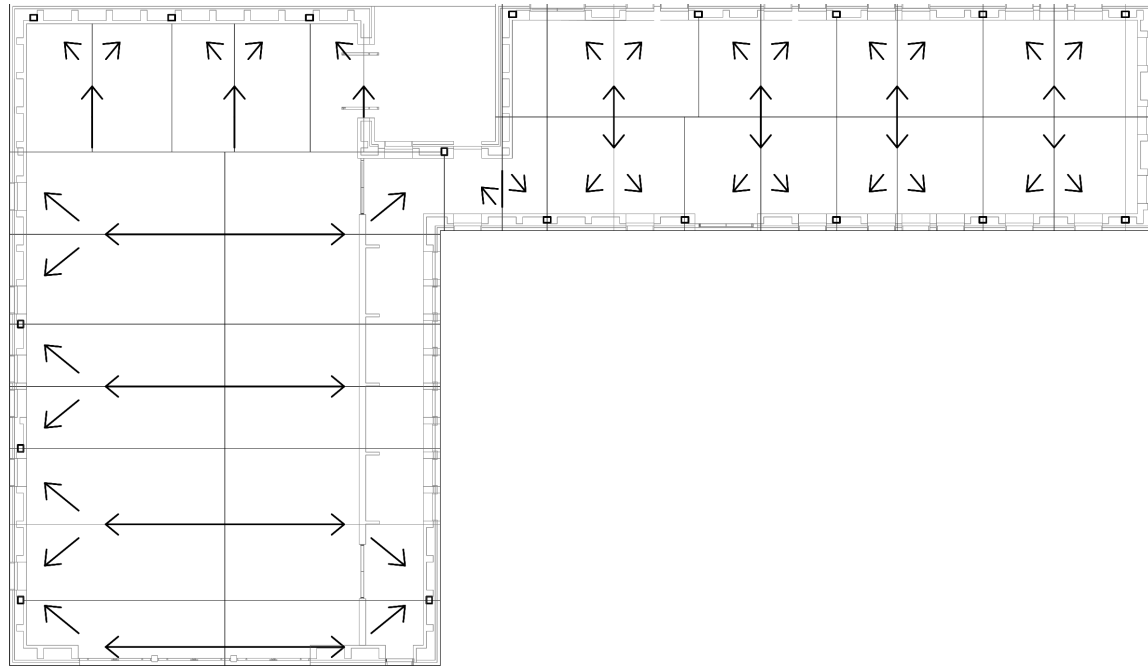
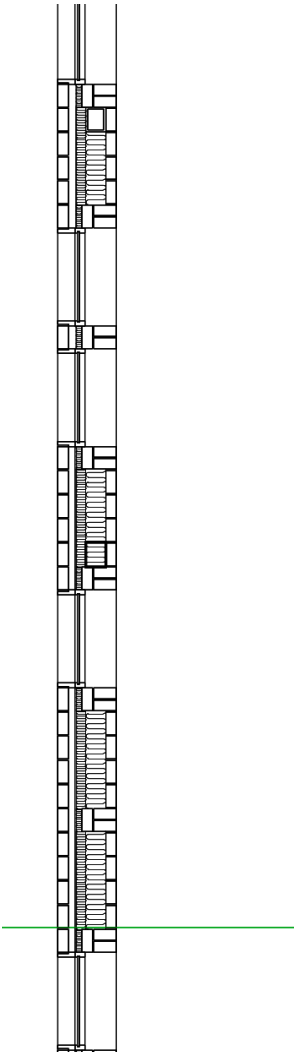


City floor in brick

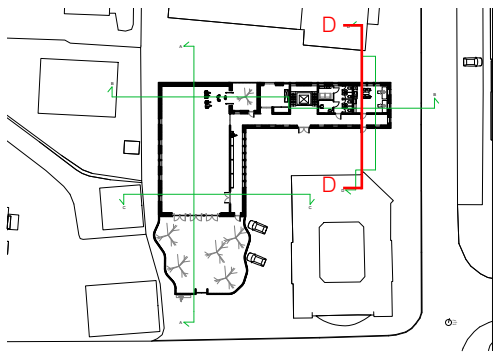
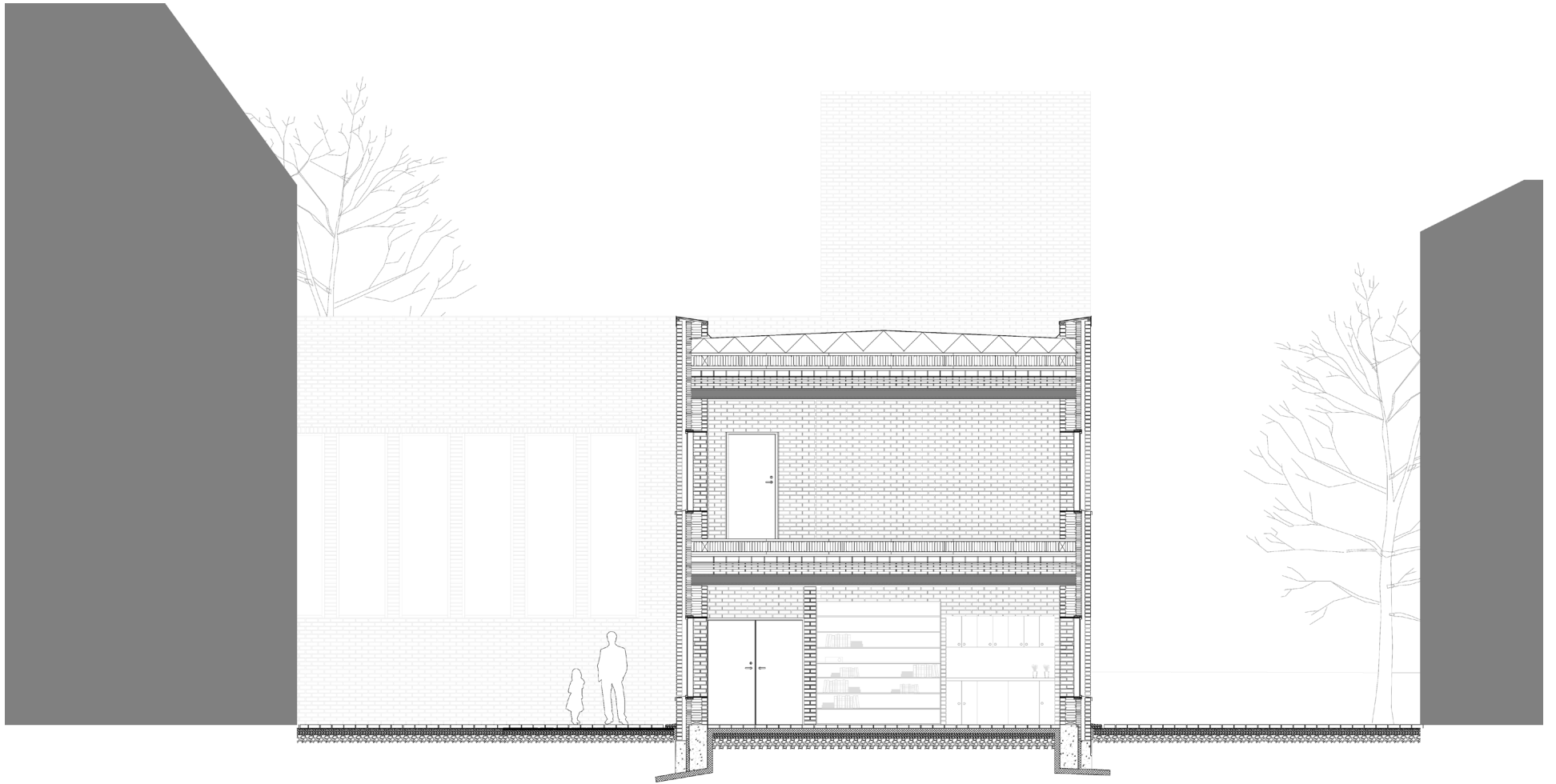




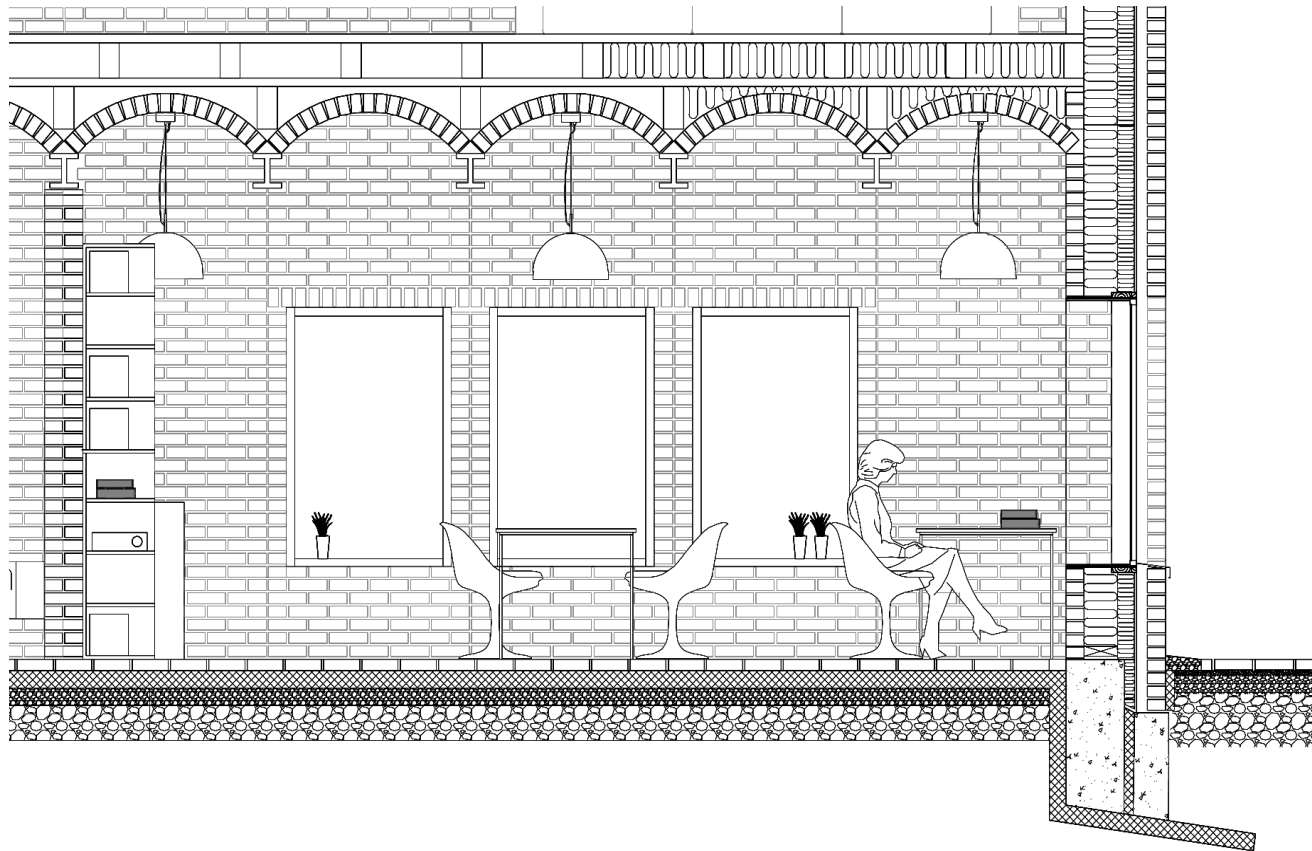
Plan 2.et.



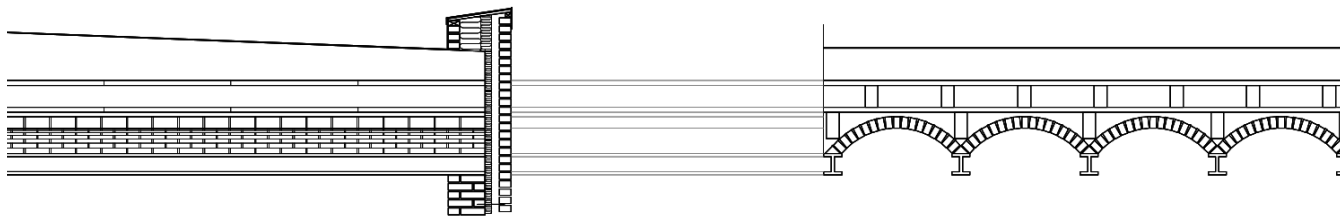
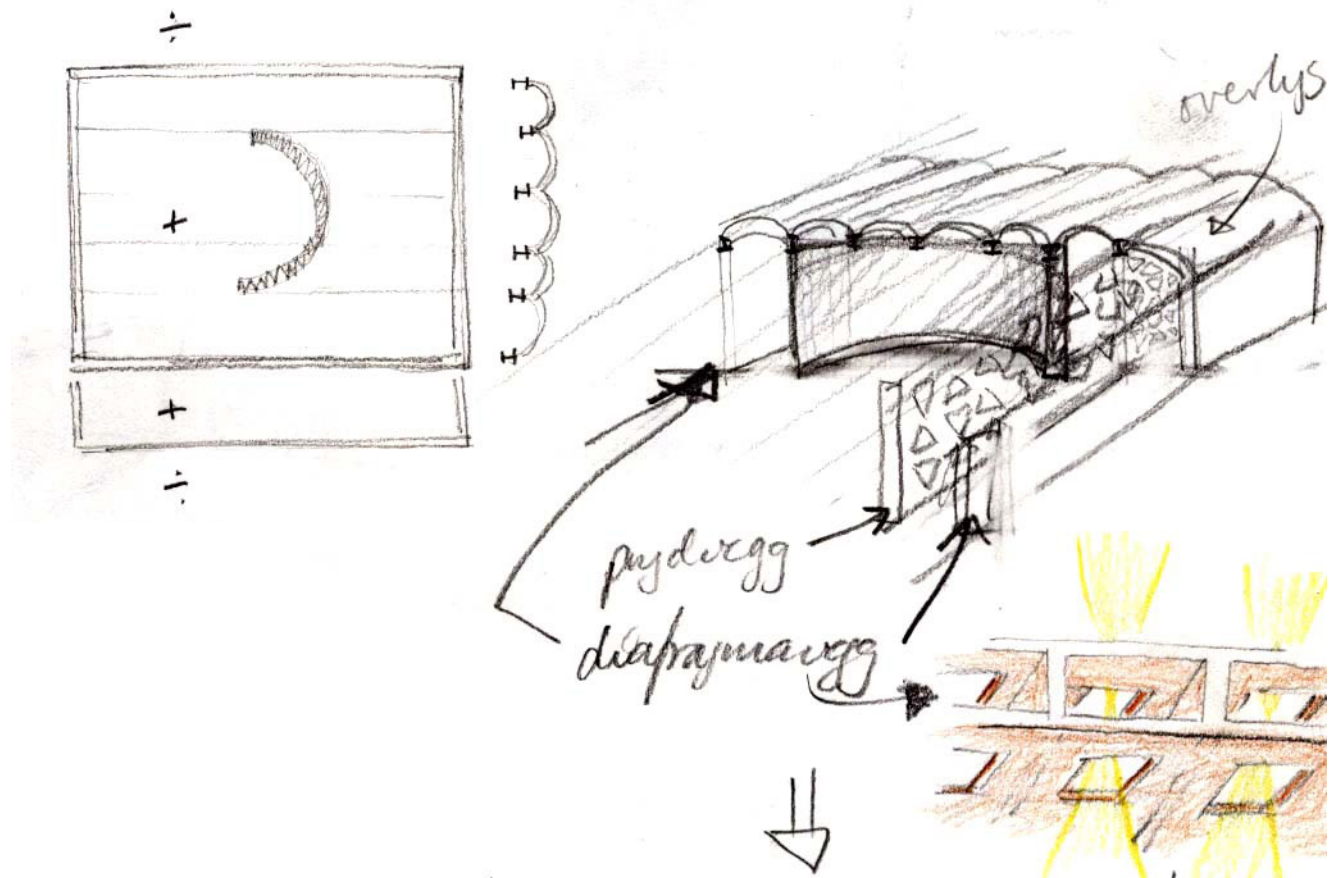
Roof/ rainwater

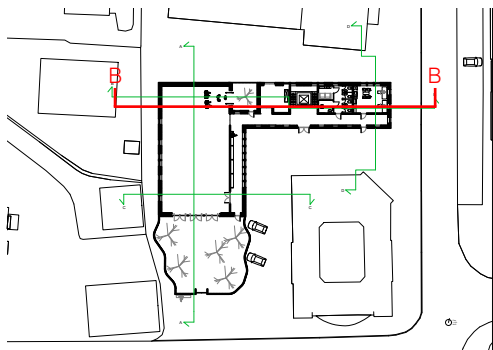


Section D-D

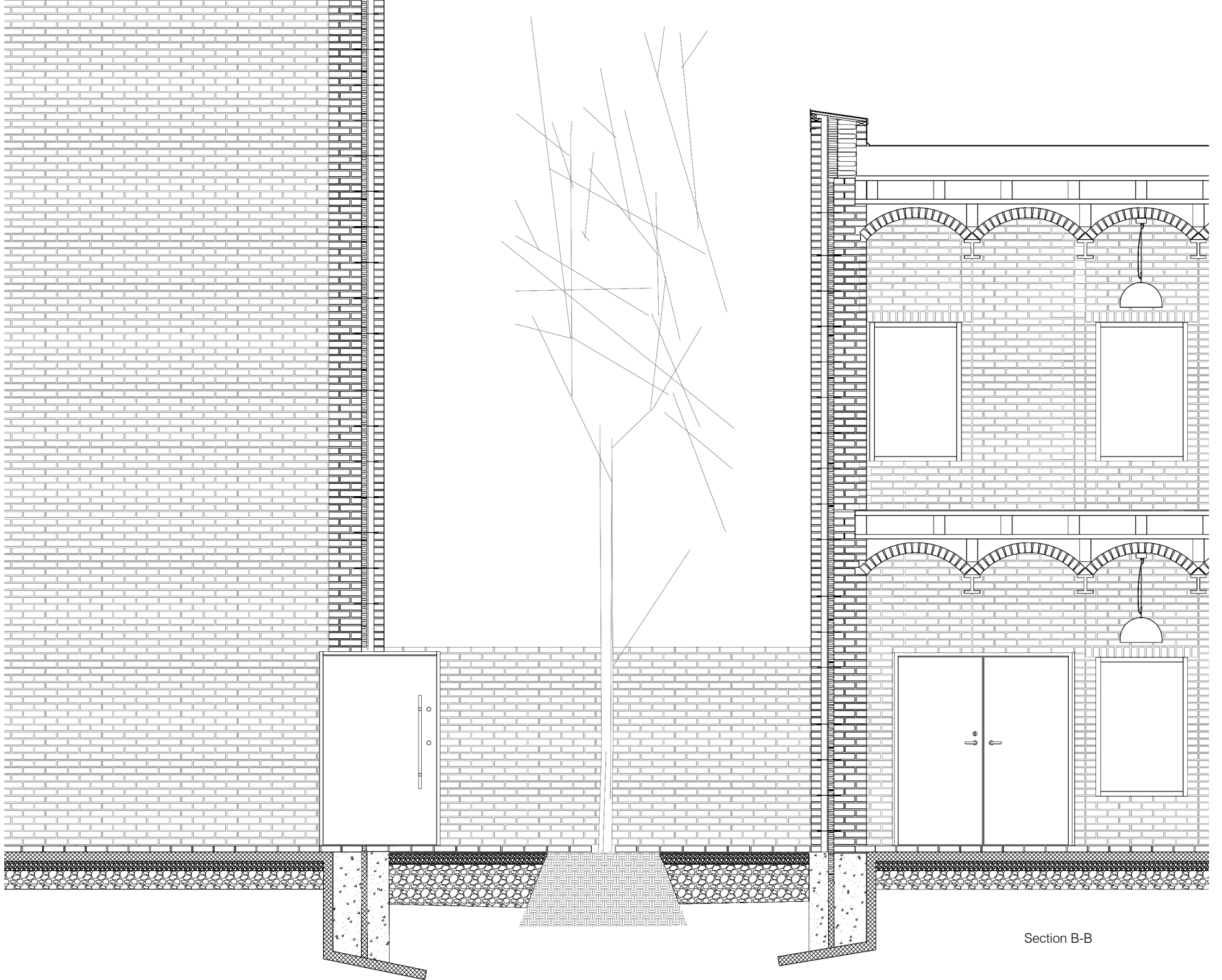


Section B-B



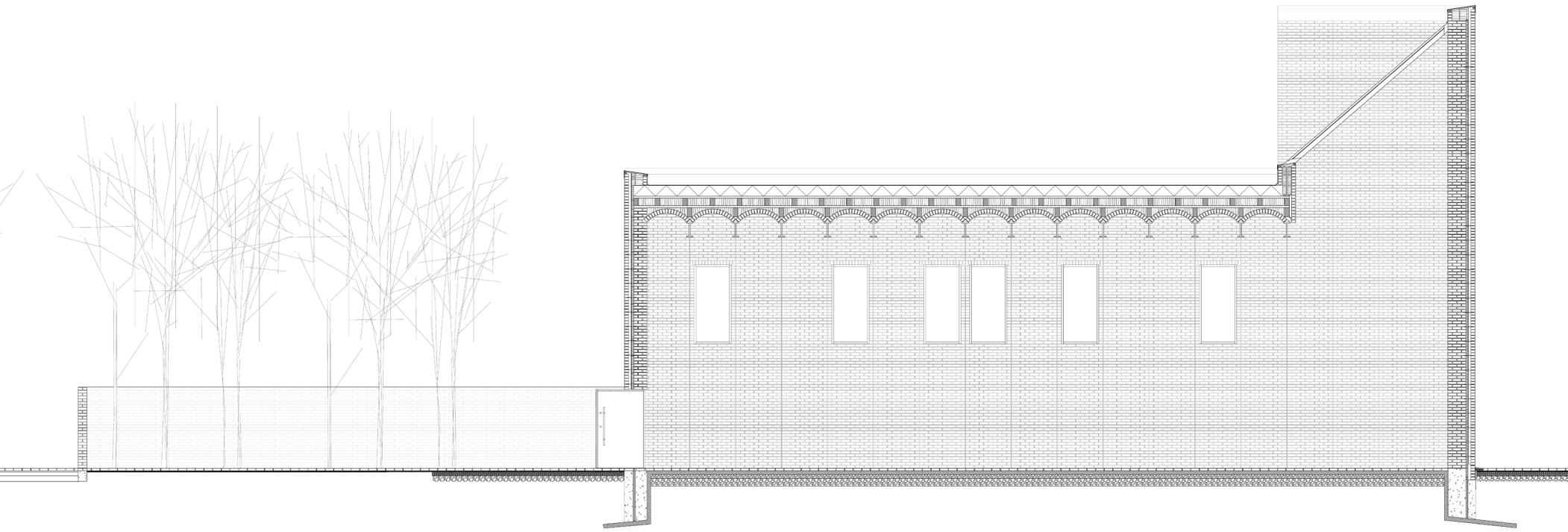


Section B-B

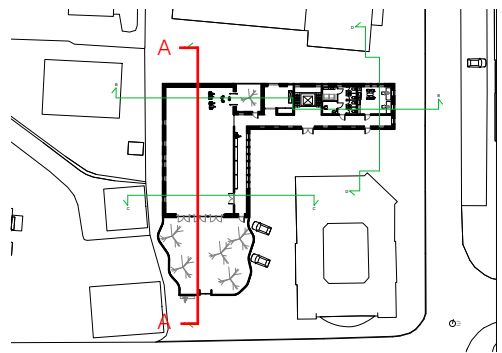


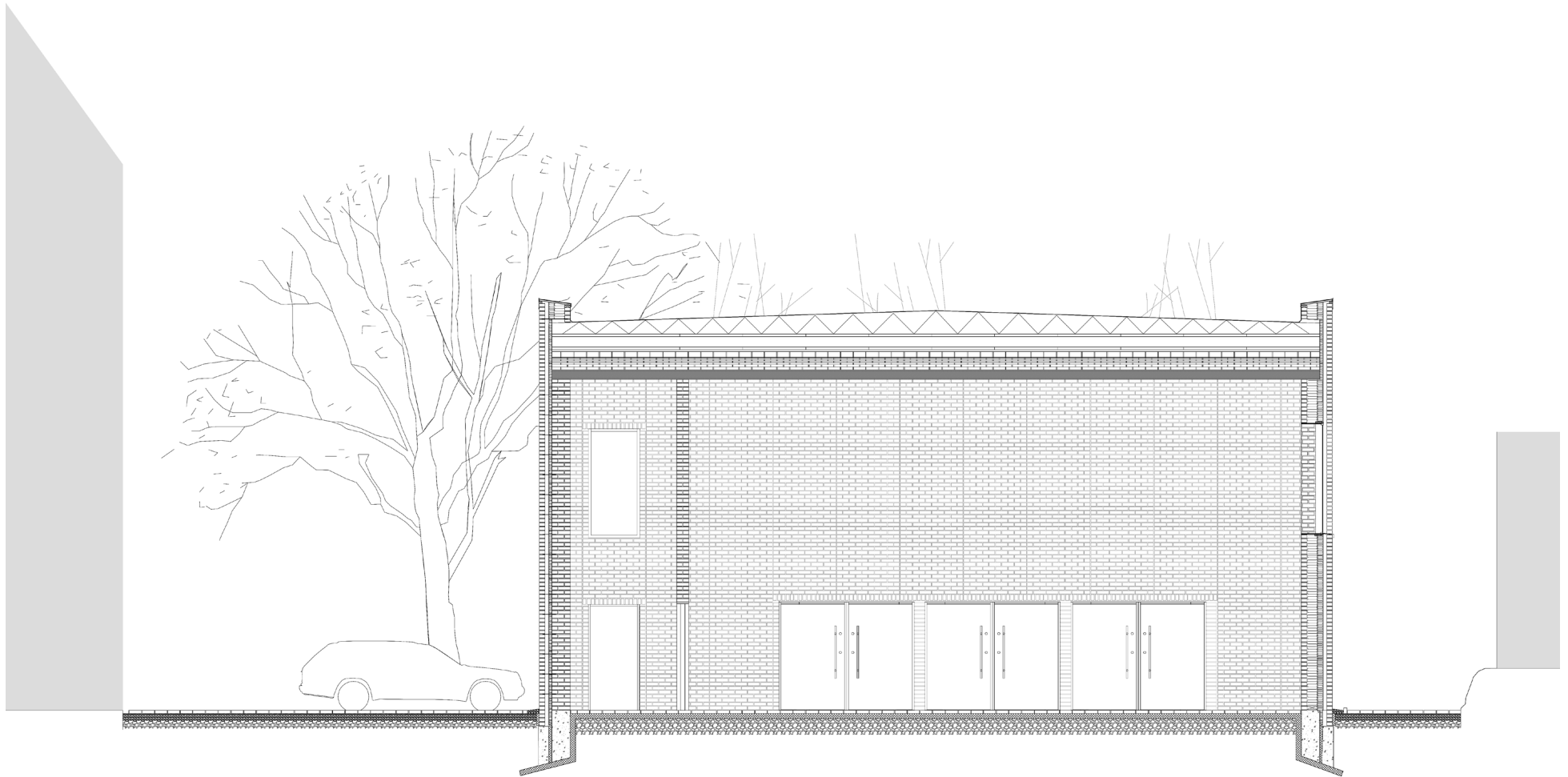
Section B-B



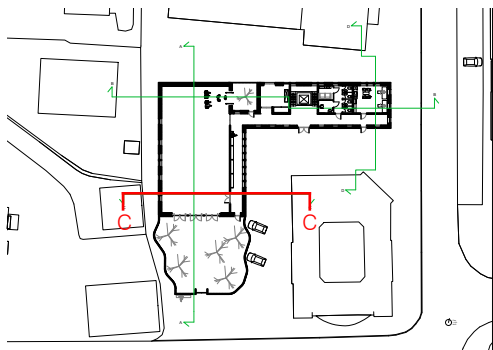


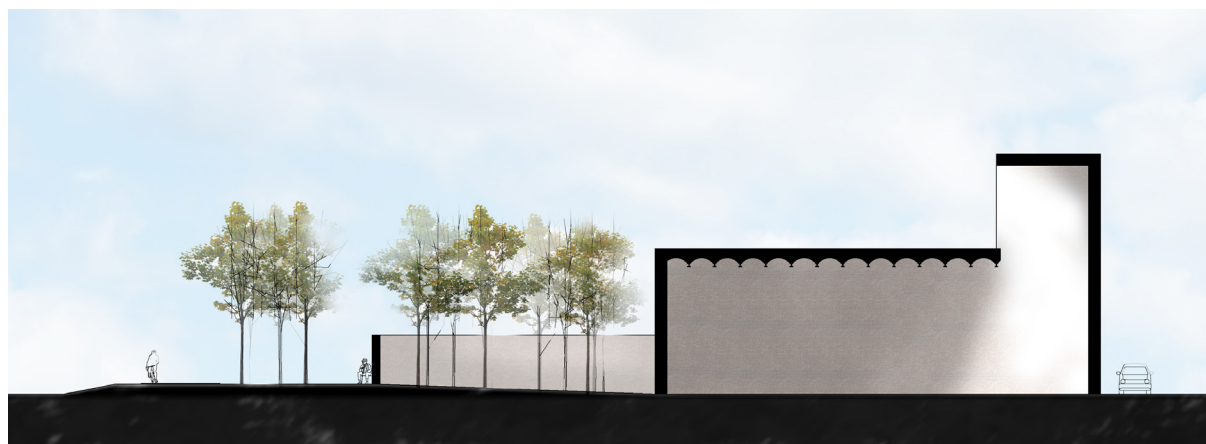
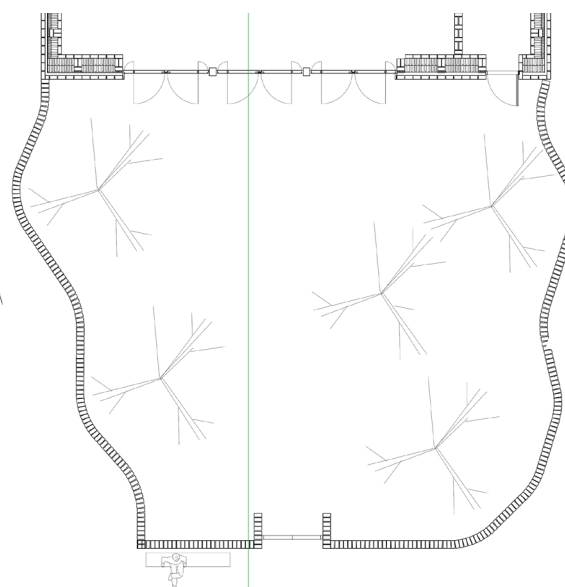
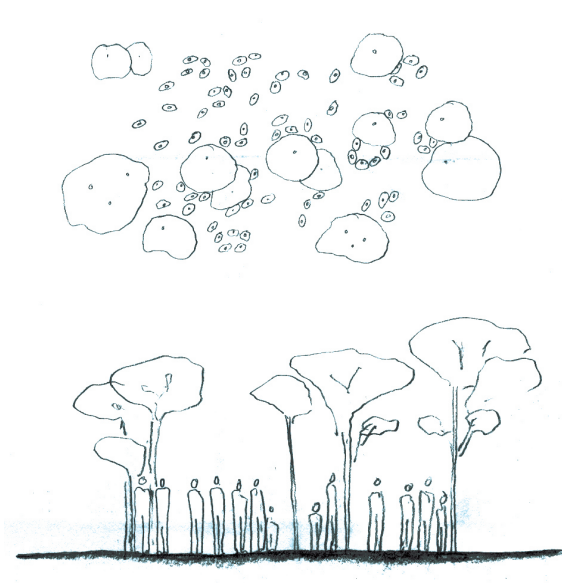
Section A-A



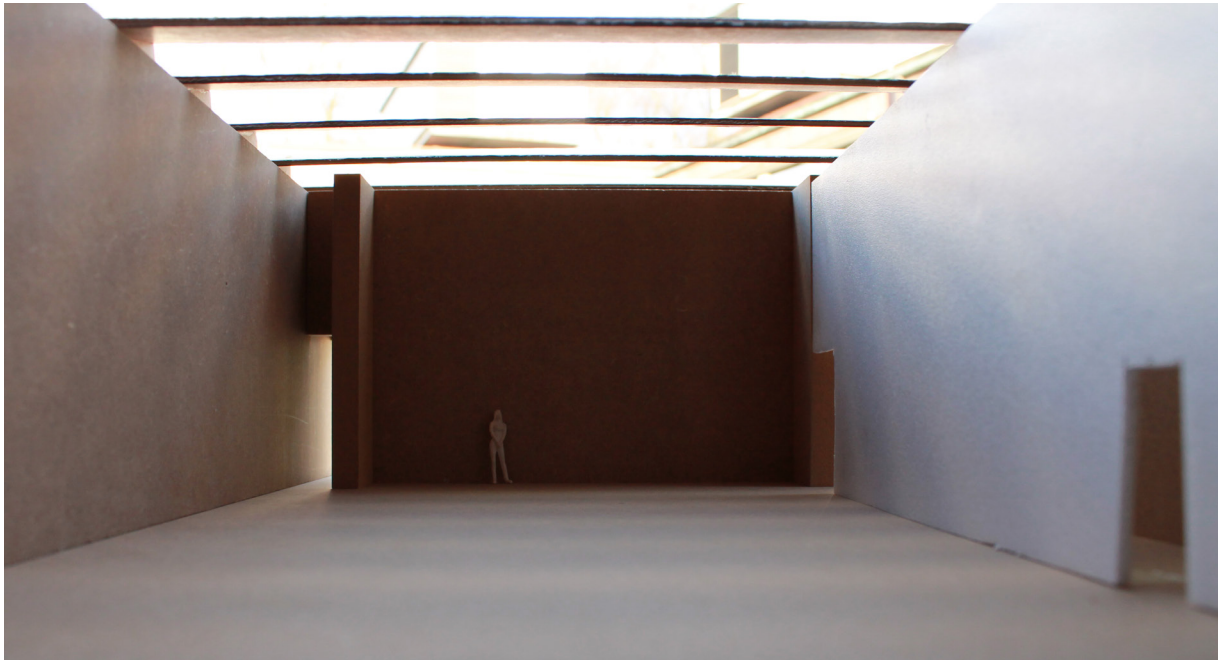


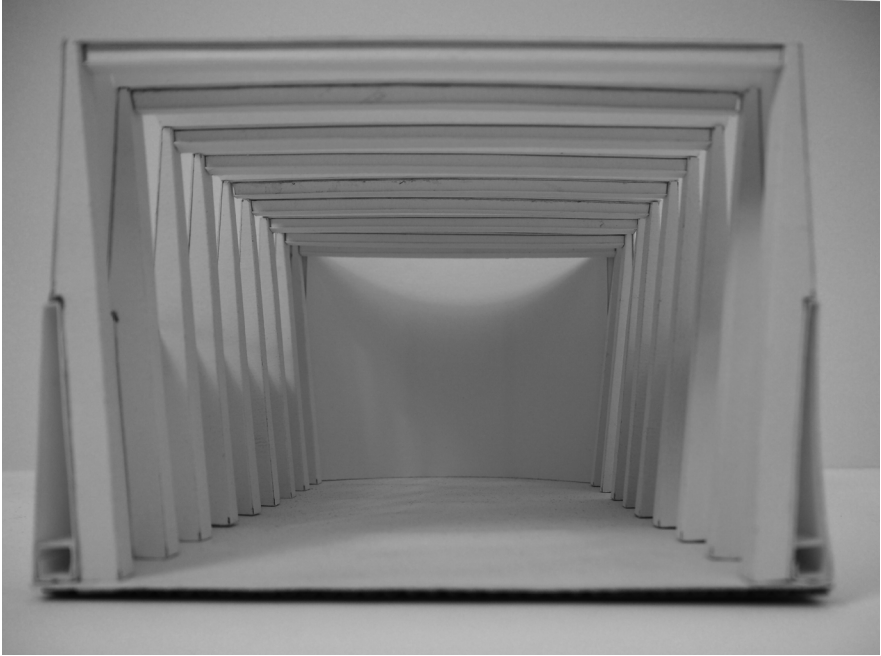
Section C-C

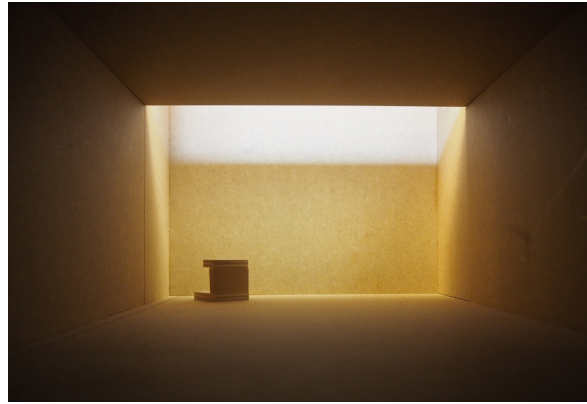
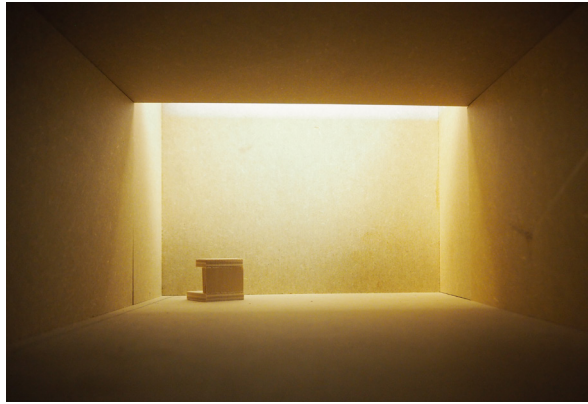




Garden

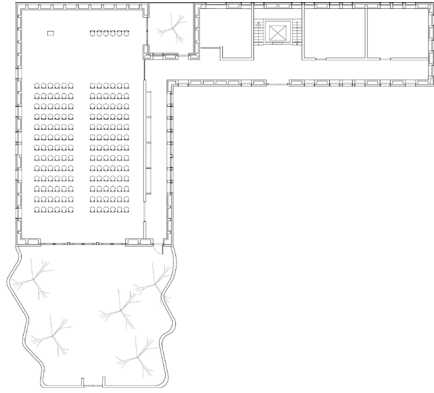




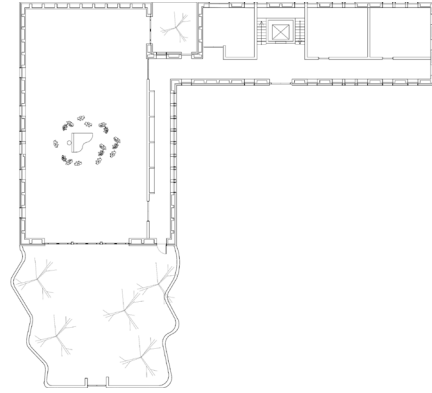


Model photo. Lightstudies.

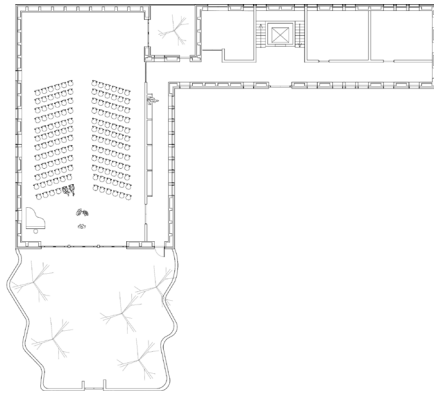




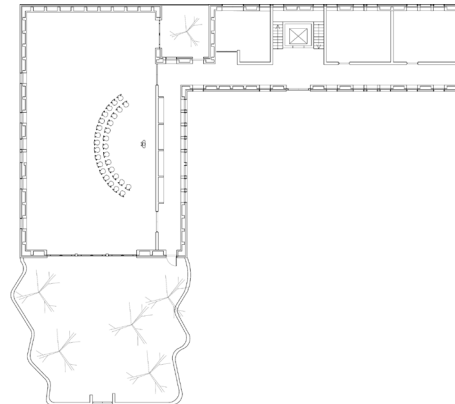
Ceremony facing north



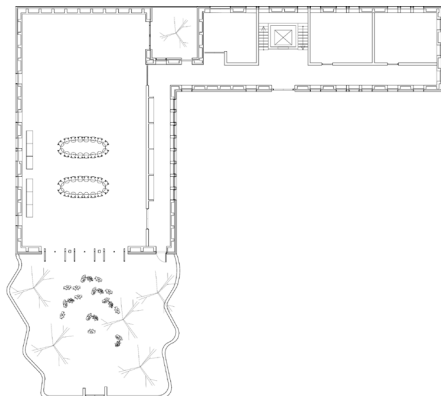
Ceremony centered



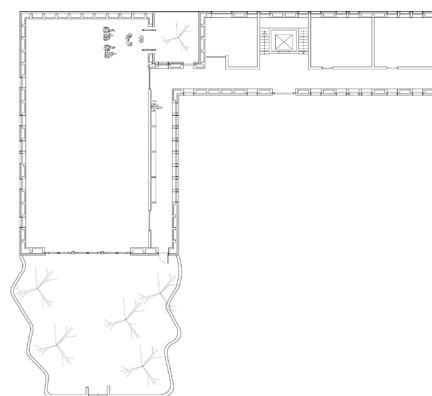
Ceremony facing south



Ceremony facing east



Ceremony outside



Ceremony towards courtyard

