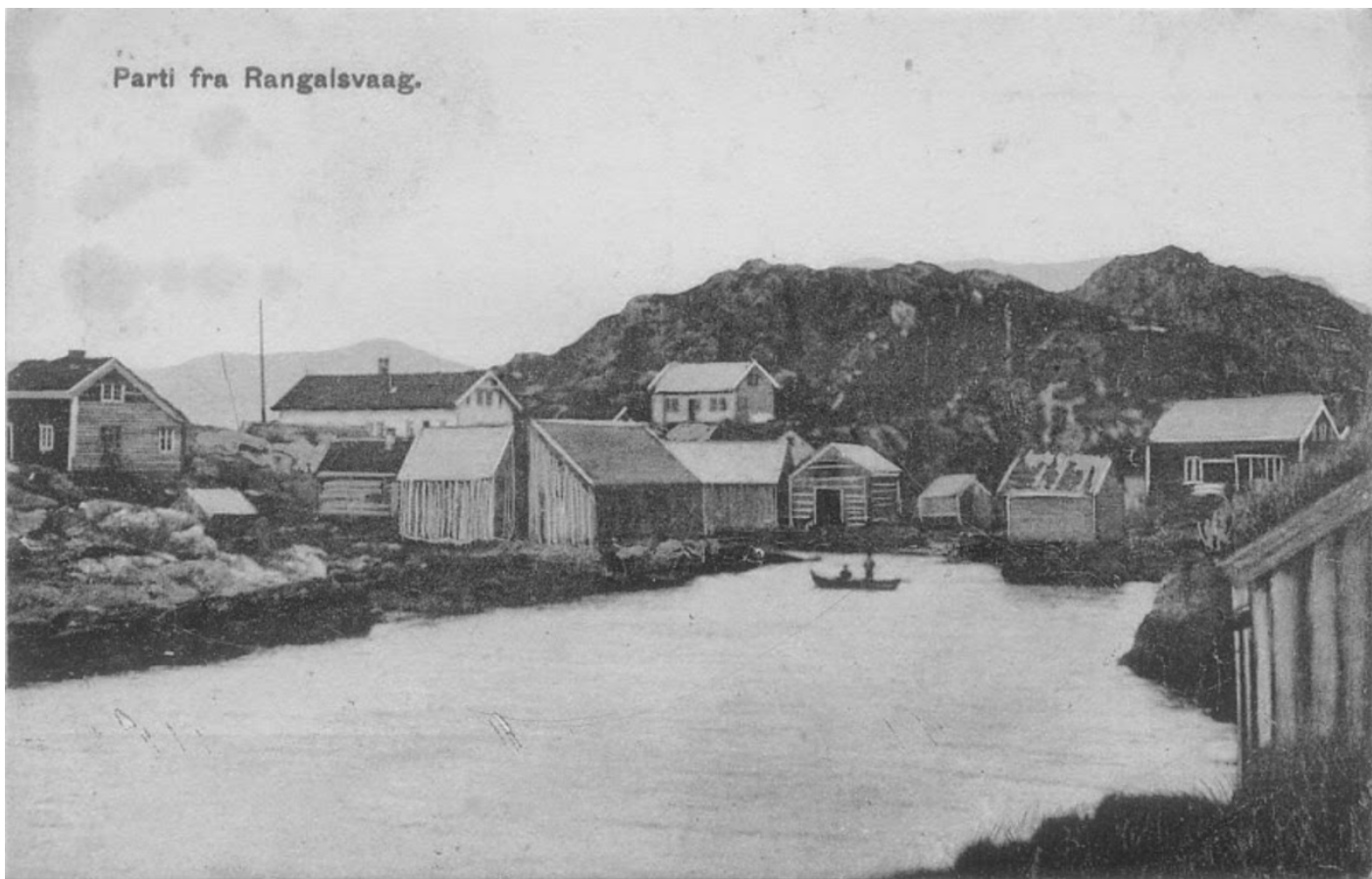




Parti fra Rangalsvaag.



Old photograph of fishing environment in Rognaldsvåg



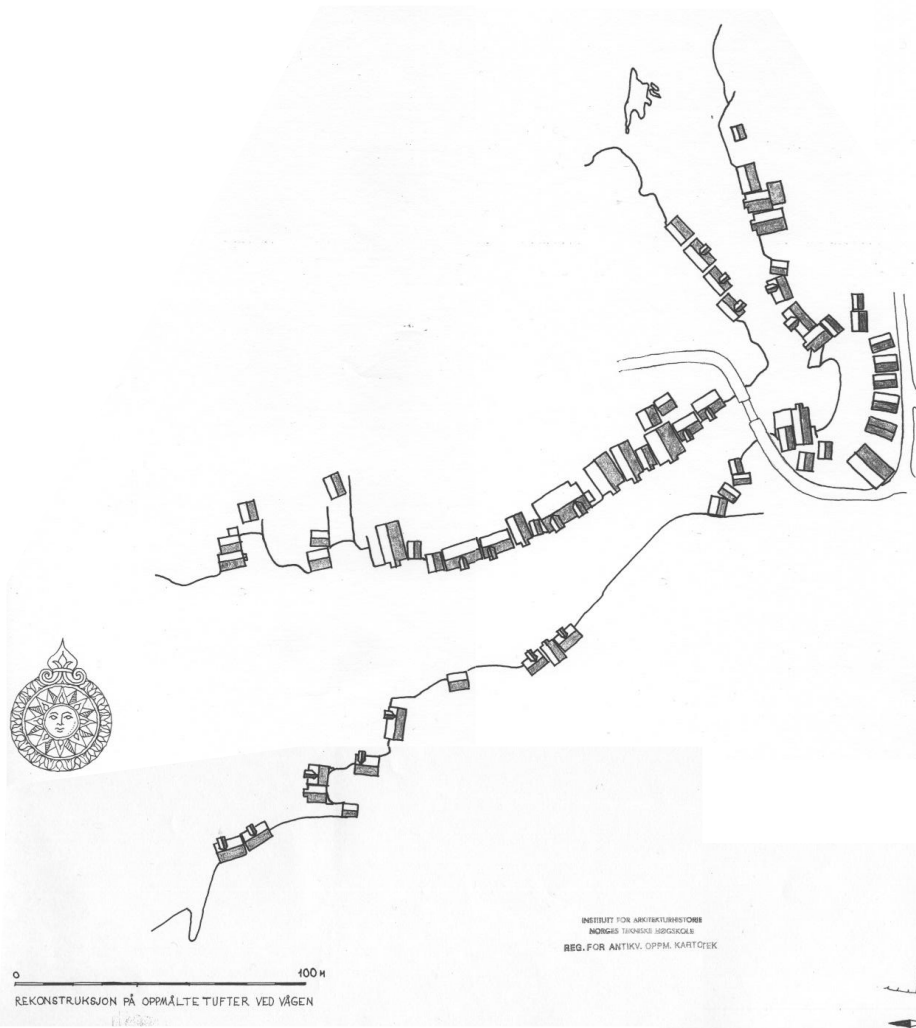
The fishing season with visiting fishermen



This old photograph illustrated one of the seahouses which no longer existing on site, leaving empty spots along the quay



This is the chosen site for The Sea Cabin on Sandy Ground, located in a bay with shallow water and areas for swimming.



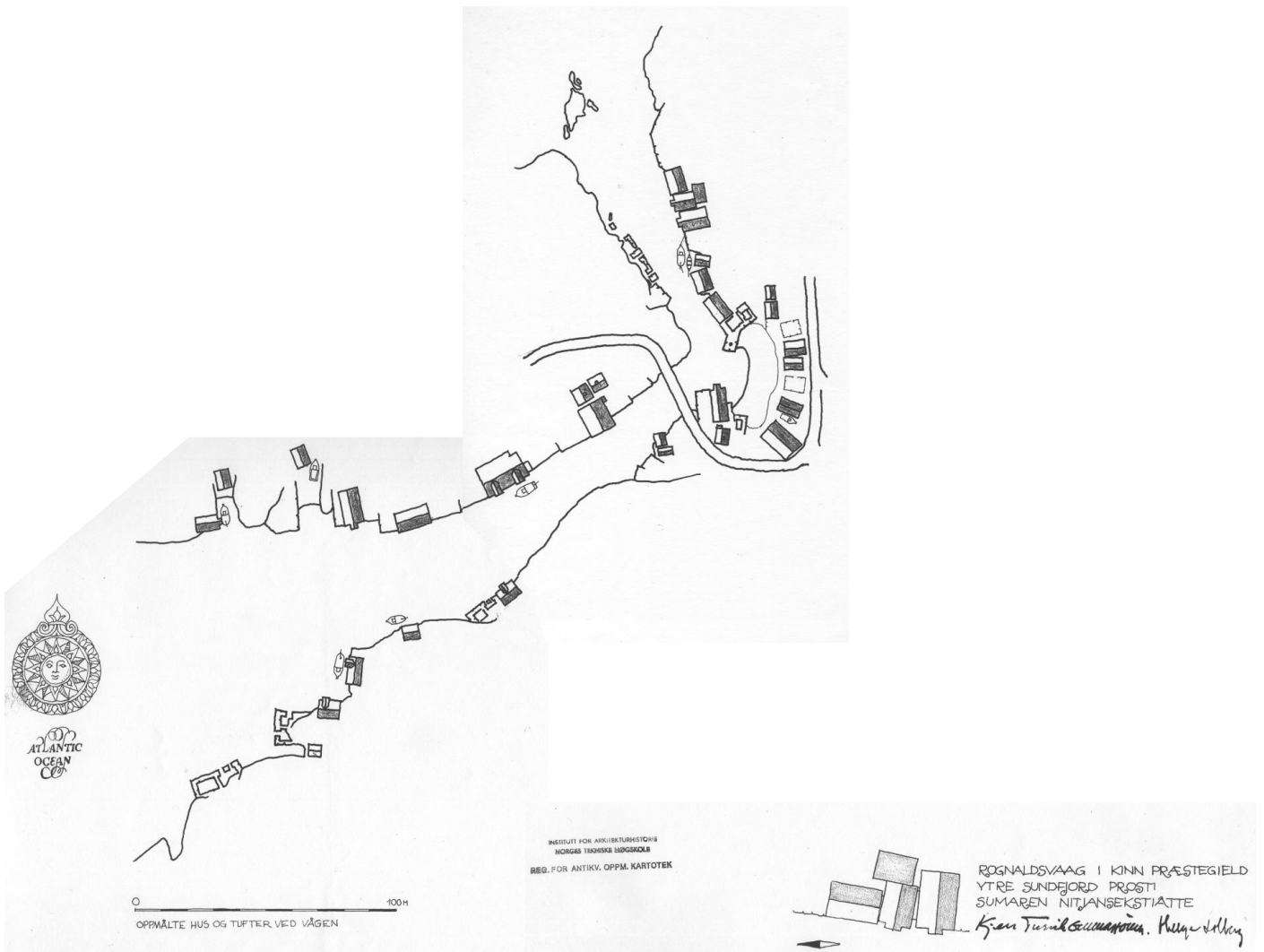
DISSE TEGNINGENE, ER RESTENE  
 ETTER DETTE FISKEVÆRETS LEVANDE  
 FORTID  
 EIT BILDE AV DET LEVANDE  
 ROGNALDSVÅG I DAG, ER EIT HEILT  
 ANNA, DER DET VI HAR MÅLT OPP  
 IKKJE EIN GONG TJENER SOM RED-  
 SKAP, OG DERFOR HELD PÅ Å FELL  
 NED  
 ROGNALDSVÅGER UNDER STERK AVFØLKNING  
 TRASS I FOLKS INNBITTE TILTAK  
 FOR Å FÅ BU DER,  
 Å HJELPE DESSE FOLKA: "Å BEVARE  
 STEDET", VILLE VÆRE EIT HEILT  
 ANNA ARBEID FRÅ OSS ENN DETTE.

INSTITUTT FOR ARKITEKTURHISTORIE  
 NORGE'S TEKNISKE HØGSKOLEN  
 REG. FOR ANTIKV. OPPM. KARTOTEK

ROGNALDSVÅG I KINN PÅSTEGJELD  
 YTRE SUNDFJORD FROSTI  
 SUMAREN NITJANSEKSTIATTE  
*Kjell Tønne, Gunnar, Hilde Solberg*

0 100 M  
 REKONSTRUKSJON PÅ OPPMÅLTE TUFTER VED VÆGEN

Siteplan by municipality illustrating the density of sea houses in Rognaldsvåg mid 20th century based on studies of remaining foundations



Site plan from 1968 illustrating open spots along the quay from former sea houses.





Historical photograph of bridge at the time when the waterways was the main road of travel in the fishing village

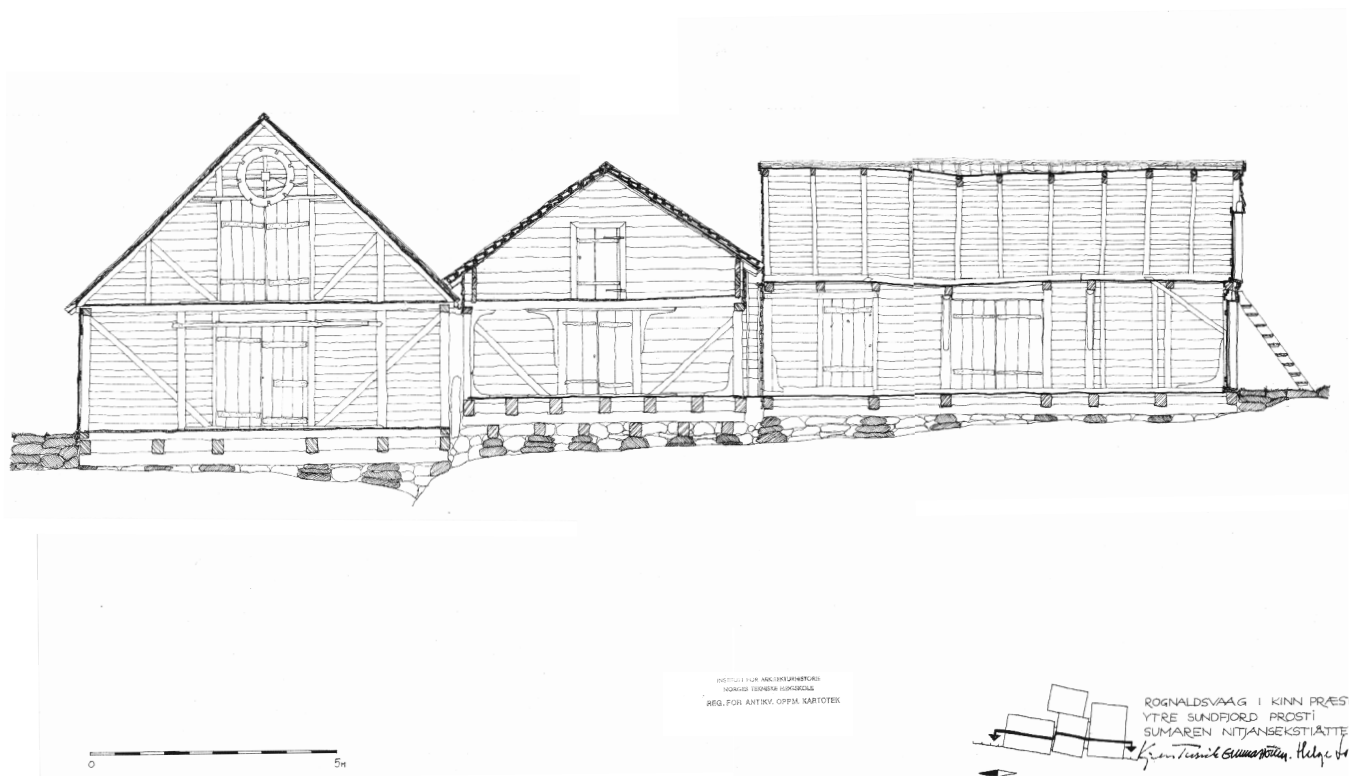
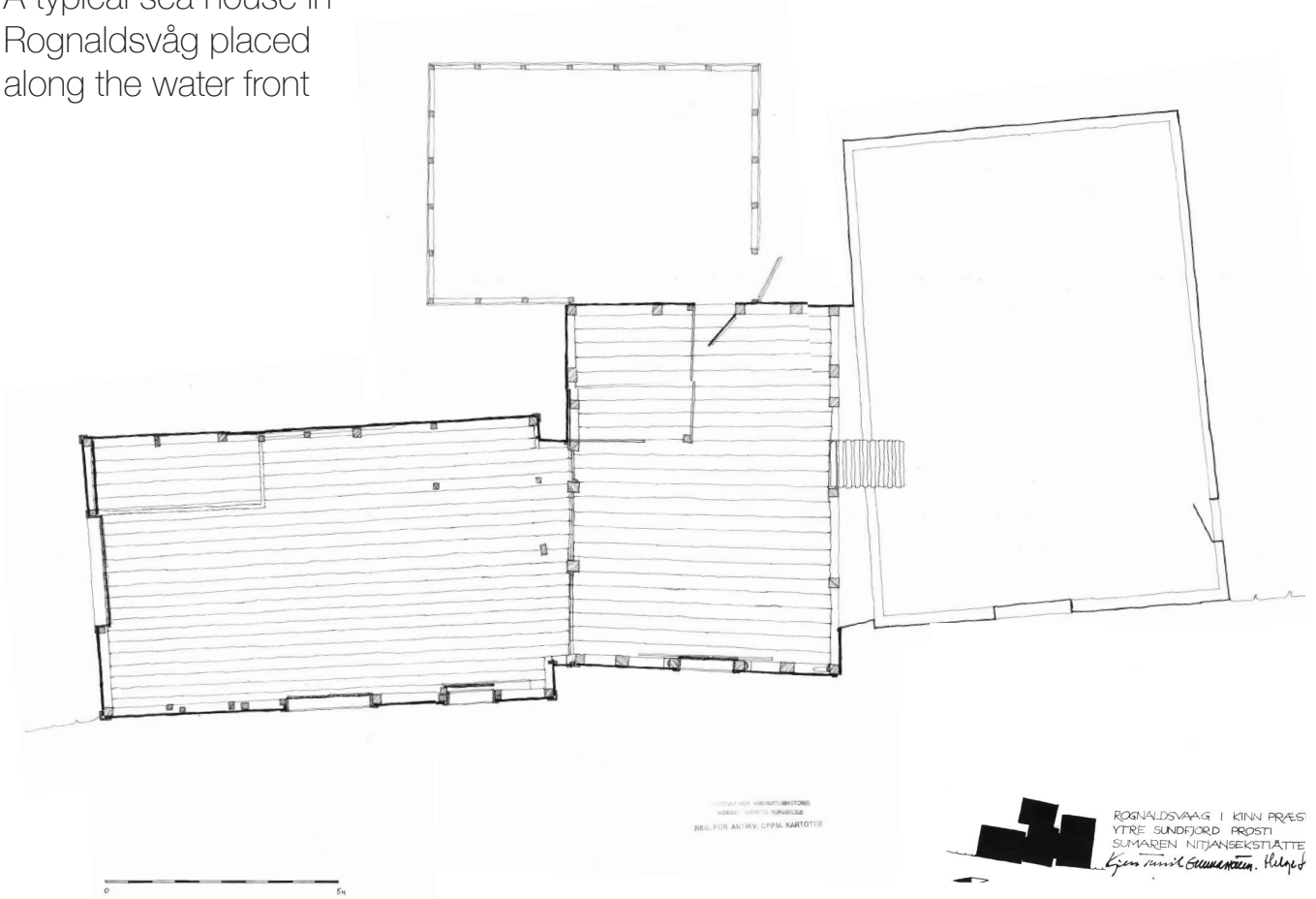


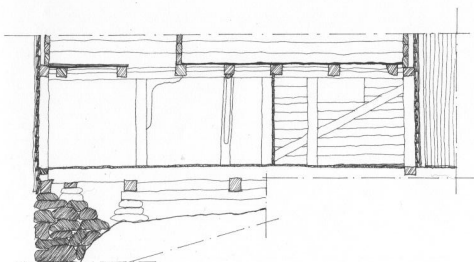
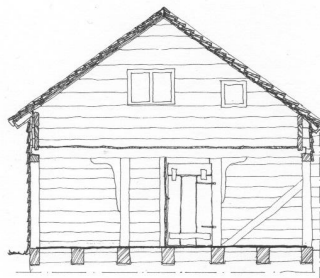
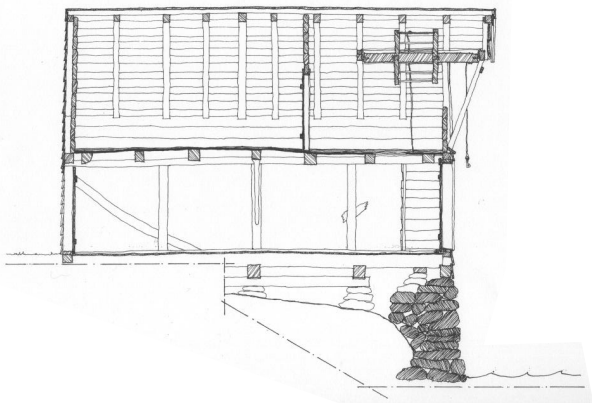


Exeptionally high water in Rognaldsvåg



A typical sea house in Rognaldsvåg placed along the water front

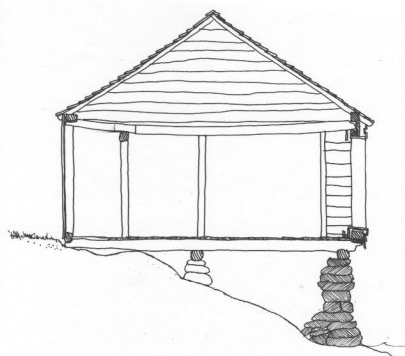
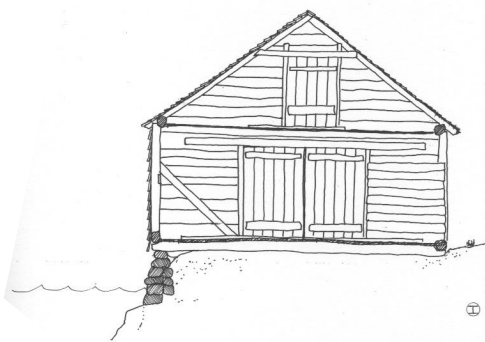




PROJEKT FOR ARKITEKTURSTØRRE  
NORSKES TROESKE LINGECKER  
REG. FOR ANTIKV. OPPVA. KARTOTER

ROGNALDSVAAG I KINN PRAESTE  
YTRE SUNDFJORD FROSTI  
SUMAREN NITJANSEKSTIATTE  
Kron tinnid *Olavsson*, Helge boll

0 5m

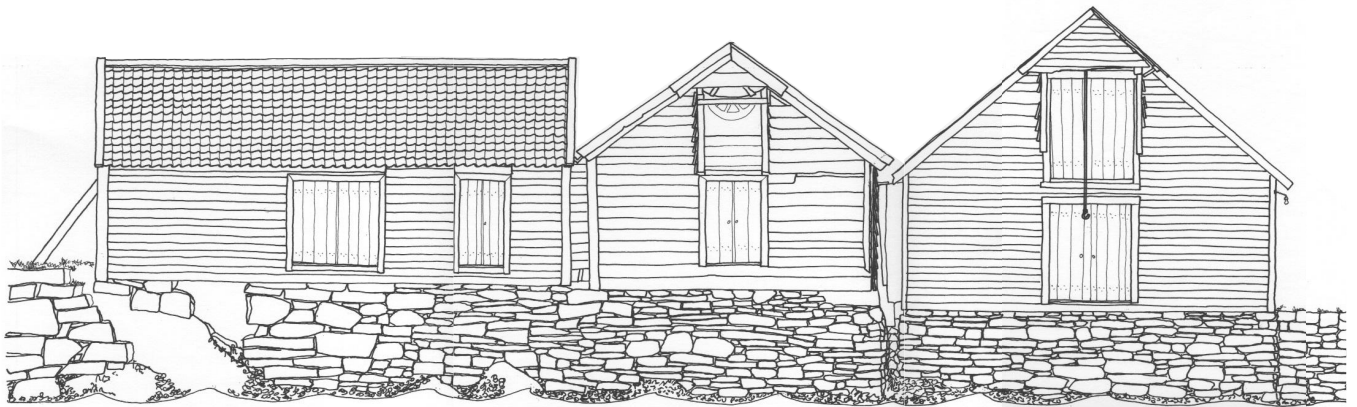


PROJEKT FOR ARKITEKTURSTØRRE  
NORSKES TROESKE LINGECKER  
REG. FOR ANTIKV. OPPVA. KARTOTER

ROGNALDSVAAG I KINN PRAESTI  
YTRE SUNDFJORD FROSTI  
SUMAREN NITJANSEKSTIATTE  
Kron tinnid *Olavsson*, Helge boll

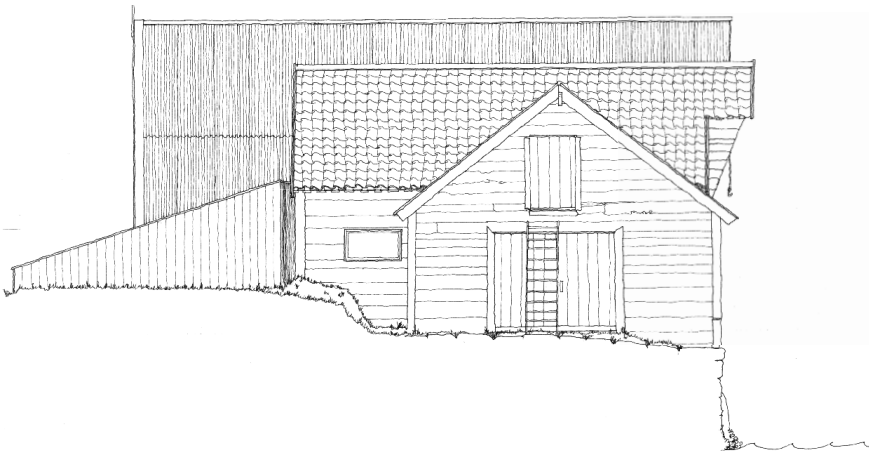
0 5m

0 5m



INSTITUTT FOR ARKITEKTURHISTORIE  
 NORWEGISKE HUSGEMÅL  
 REG. FOR ANTIKY. OPPM. KARTOTEK

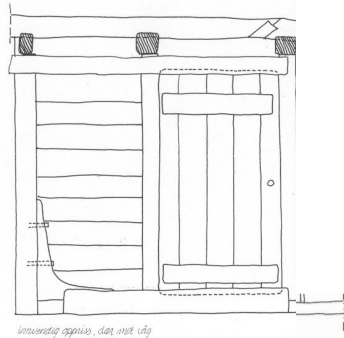
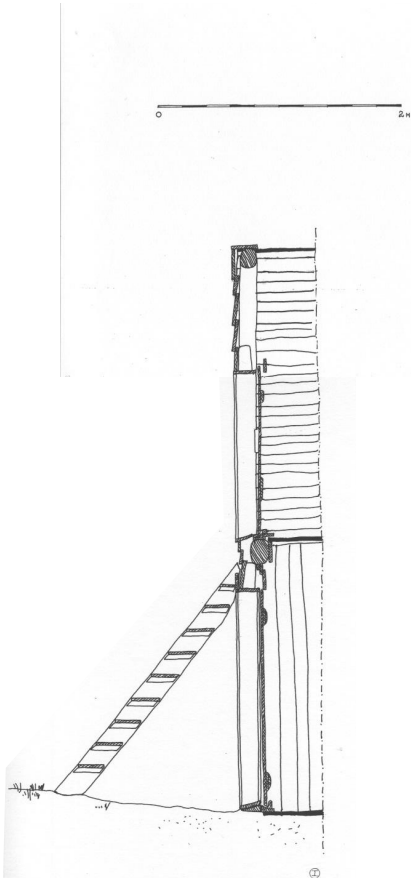
ROGNALDSVAAG I KINN PÆSTI  
 YTRE BUNDFJORD PÆSTI  
 SUMAREN NITJANSEKSTUATTE  
 Kjetil Tvedt *Arktitektur, Høje Slet*



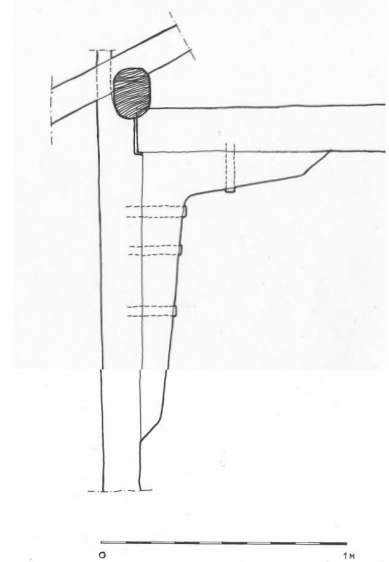
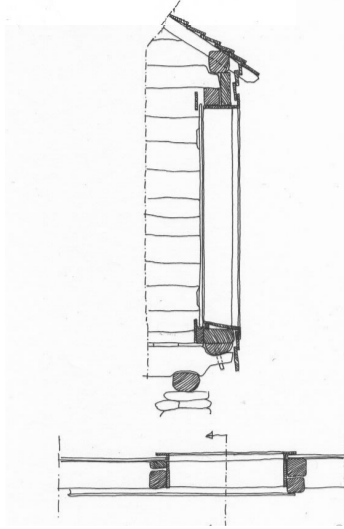
INSTITUTT FOR ARKITEKTURHISTORIE  
 NORWEGISKE HUSGEMÅL  
 REG. FOR ANTIKY. OPPM. KARTOTEK

ROGNALDSVAAG I KINN PÆSTI  
 YTRE BUNDFJORD PÆSTI  
 SUMAREN NITJANSEKSTUATTE  
 Kjetil Tvedt *Arktitektur, Høje Slet*

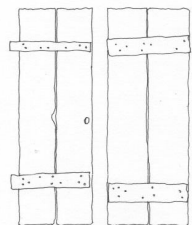
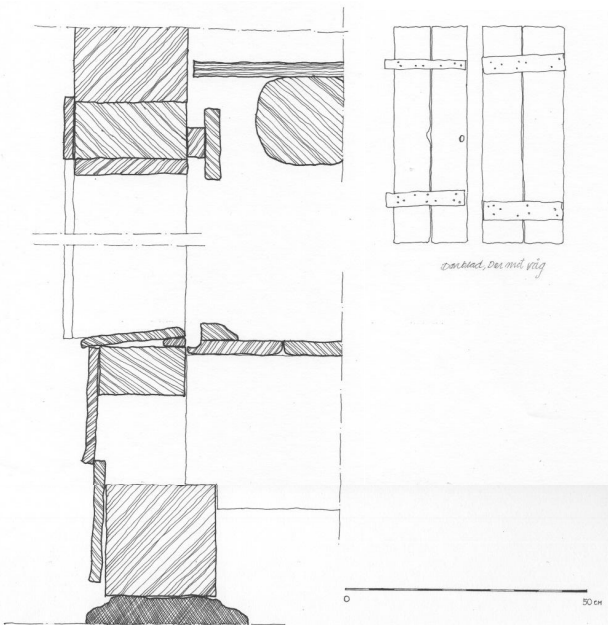




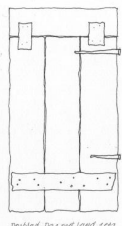
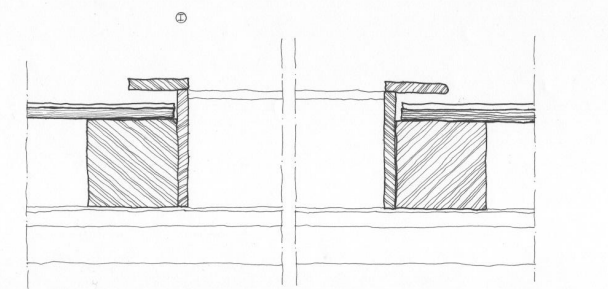
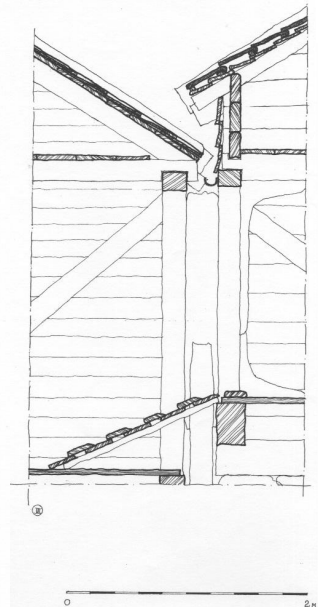
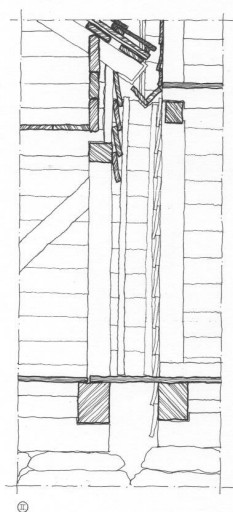
*innviðing og innvið, dag. nr. 104*



SKETSETT FÖR AÐRÆTTURSTÖRNING  
MORGNAÐS TILHÖFUS BIRGJÓNS  
BEG. FÖR ANTRKY. ÖPFM. KARTÖTOK



*innviðing og innvið, dag. nr. 104*



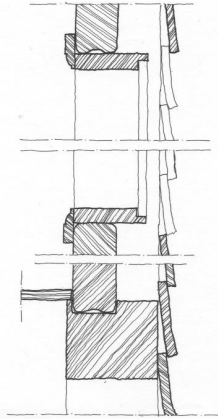
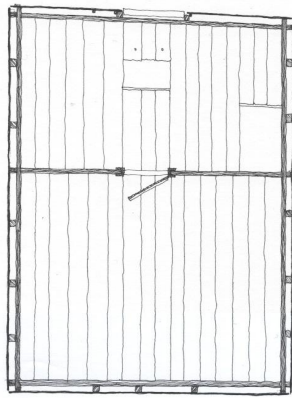
*innviðing og innvið, dag. nr. 104*

SKETSETT FÖR AÐRÆTTURSTÖRNING  
MORGNAÐS TILHÖFUS BIRGJÓNS  
BEG. FÖR ANTRKY. ÖPFM. KARTÖTOK

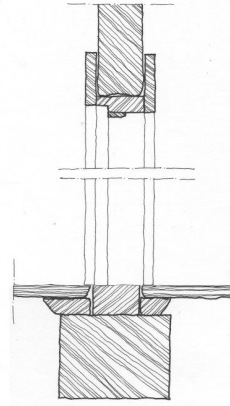
REGNALDÖVAAG I KINN PRÆST  
YTRE SUNDFJORD PROSTI  
SUMAREN NITJANSEKSTUATTE  
Gönnur Tómas Gunnarsson, Höfuð J.



0  
5m

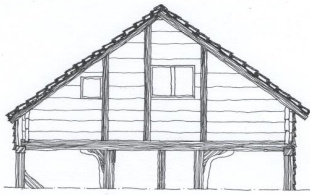


②

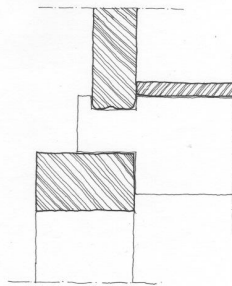


0  
50 cm

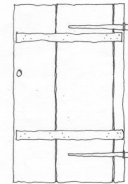
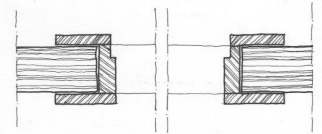
③



④



⑤



Detail, 2. fig.

AVTILT FOR ARKITEKTENS STORER  
MONGES TINGES BRUGSOMÅL  
REG. FOR ANTRY. OPPM. KARTOTER

ROGNALDSVAAG I KINN FRÆSTEGJELD  
YTRE SUNDJORD BRØSTI  
SUMAREN NITJANSEKSTIATTE  
*Kjell Tønne, Gunnar, Selge & Næss*