

Rognaldsvåg Sea Cabins
temporary living by the Norwegian coast

Silje Træen



Kinn

Rognaldsvåg

Reksta

Florø

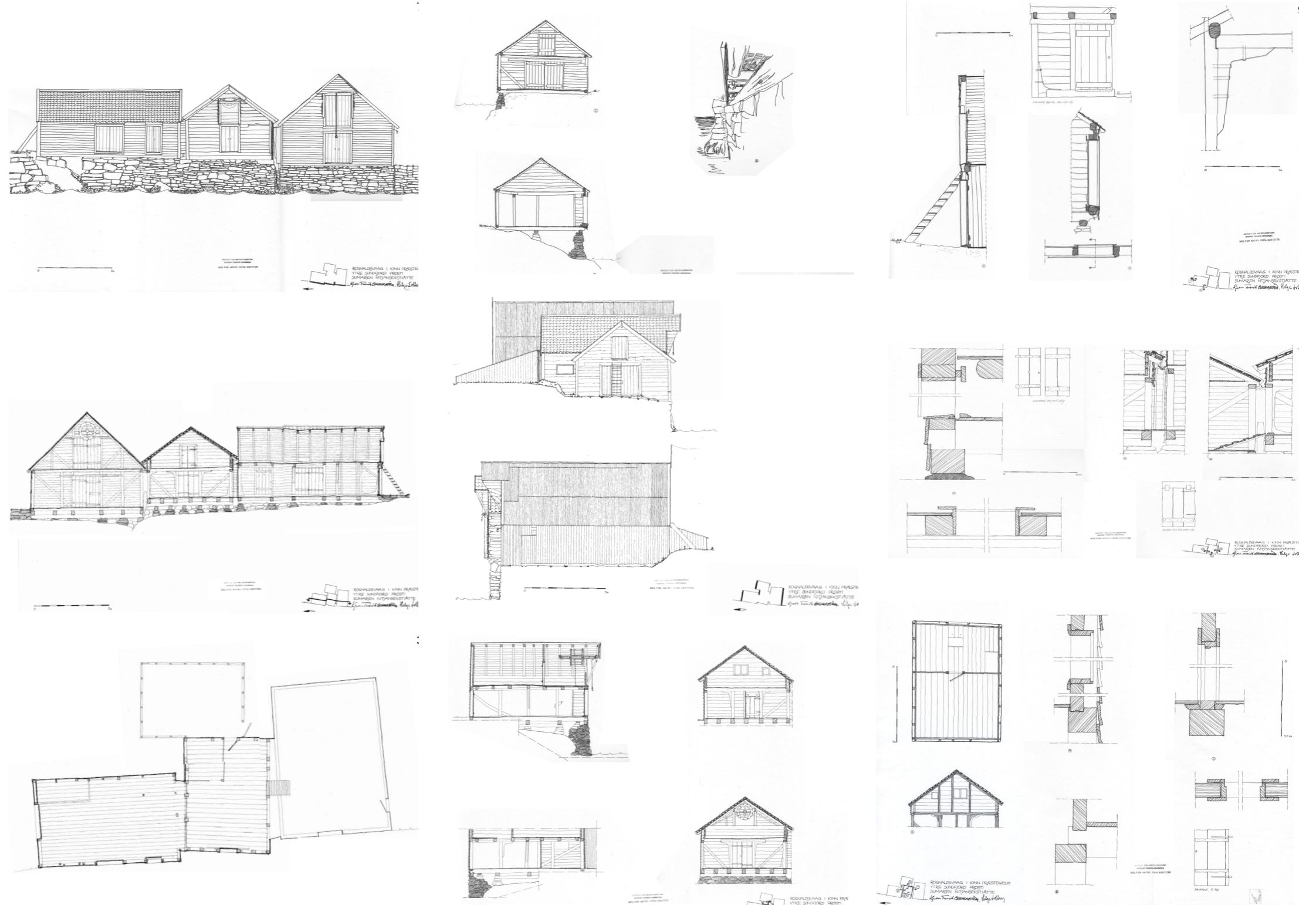
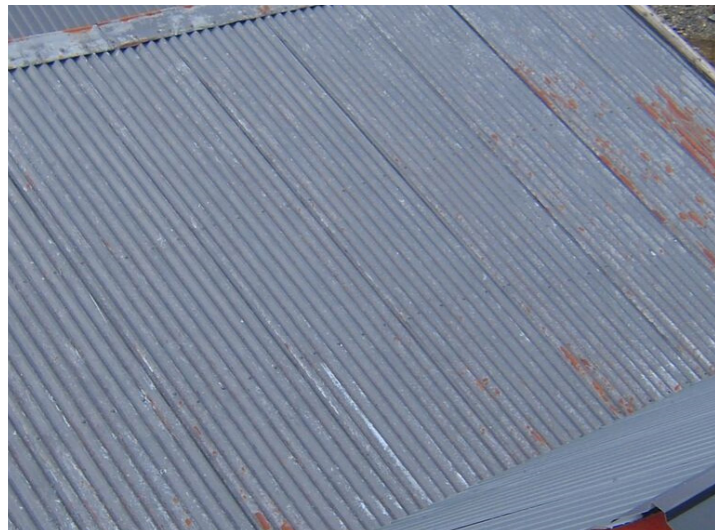




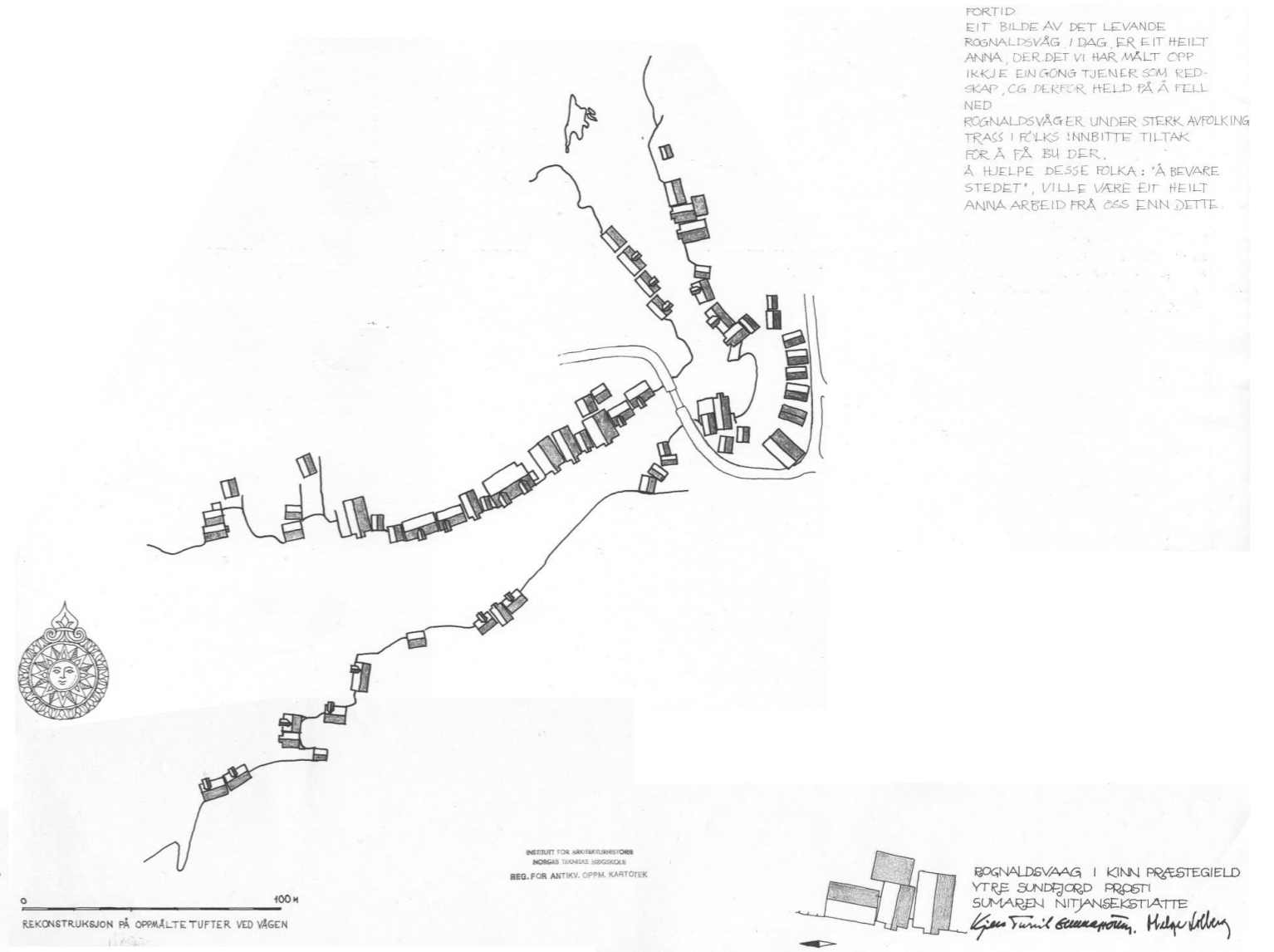
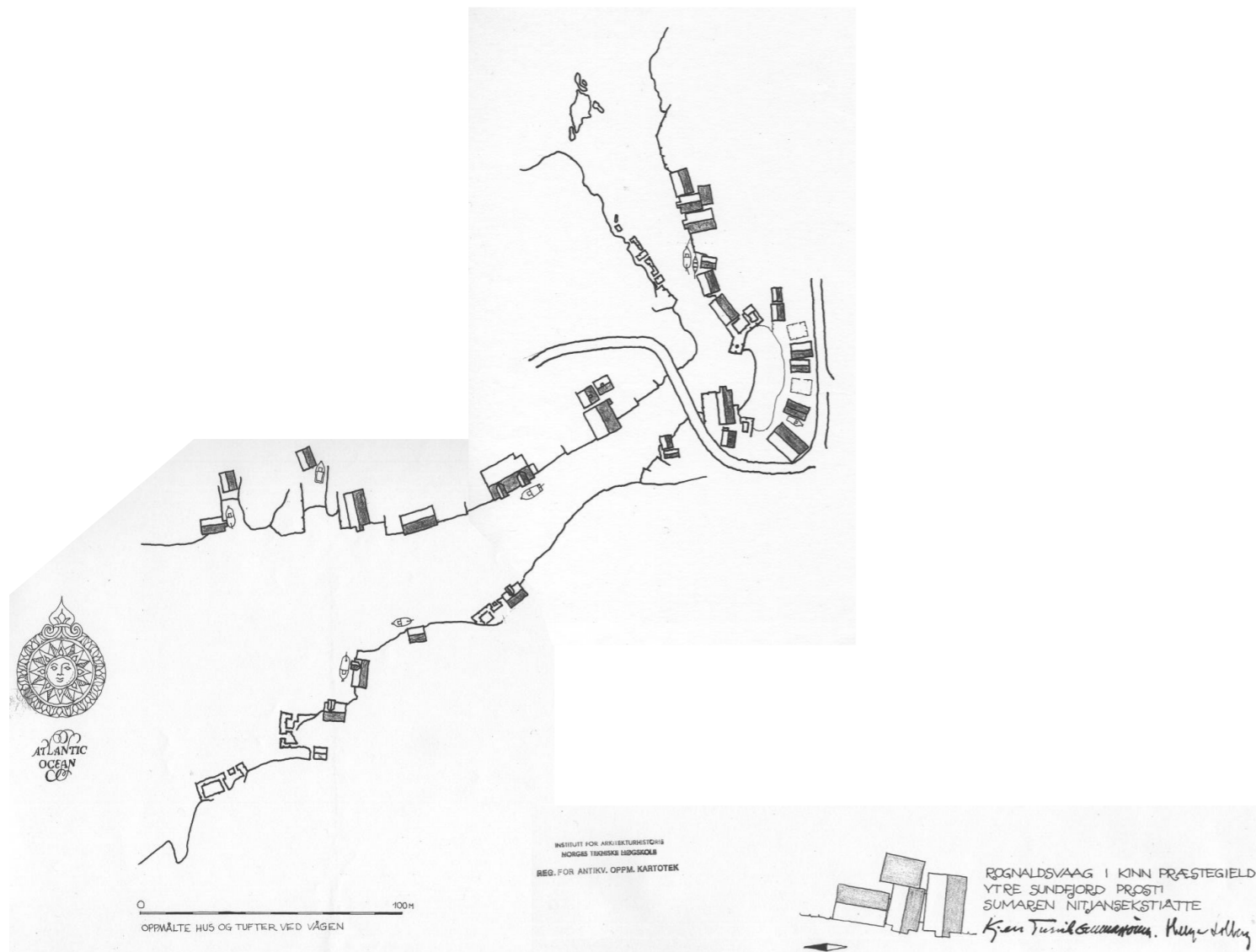
Nature of Rognaldsvåg



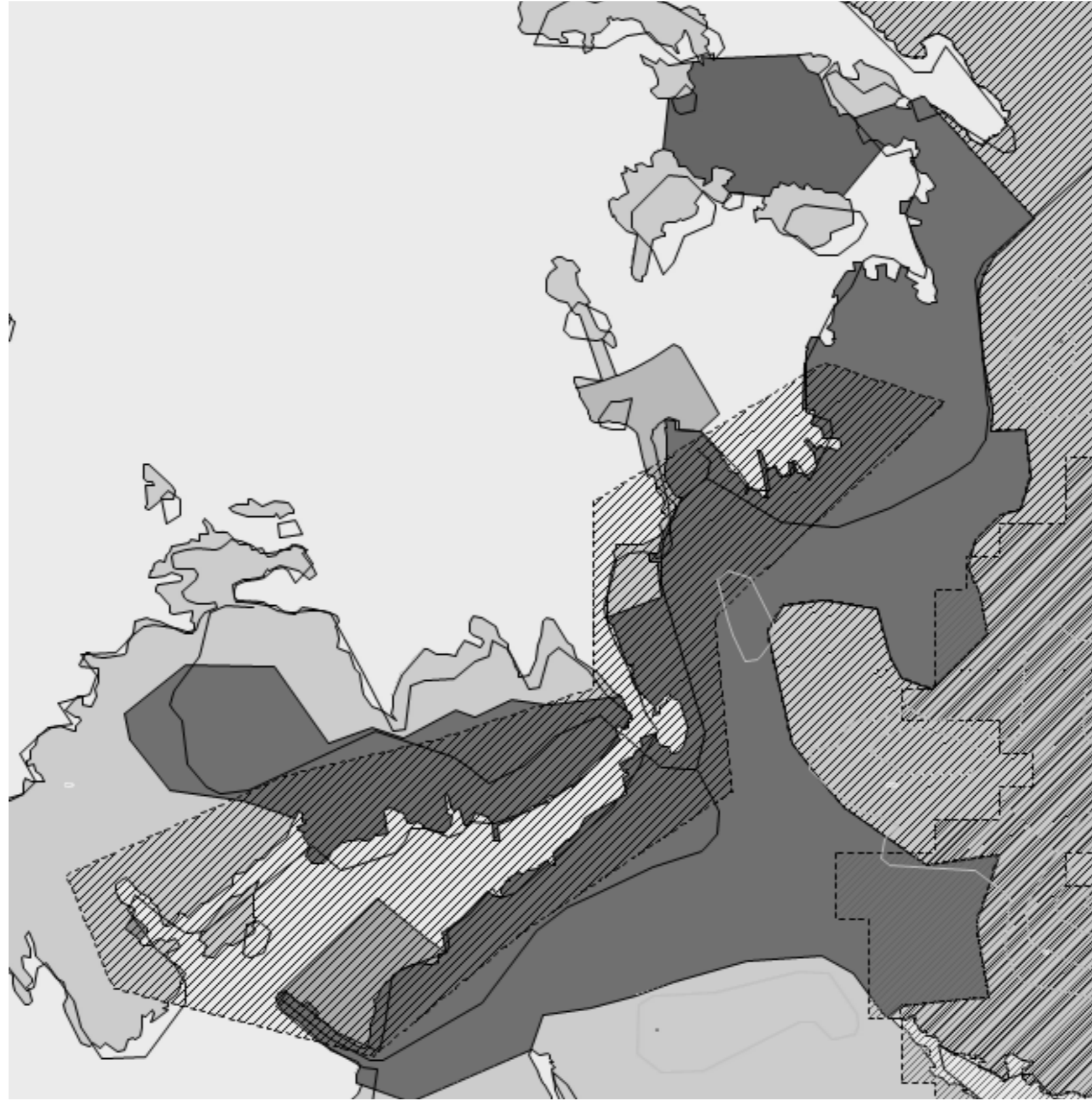
Sea house environment in Rognaldsvåg



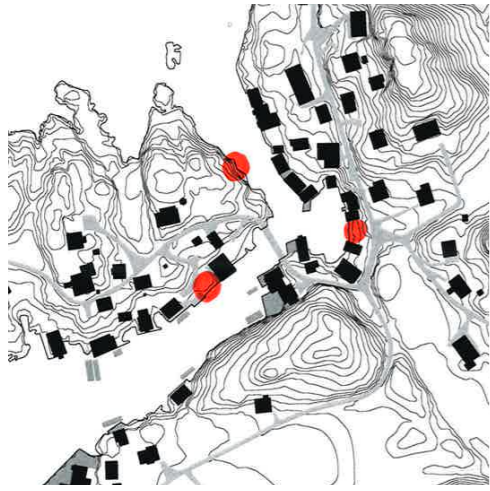
The traditional sea house



Map from 1968 (left) & reconstruction of the sea house environment (right)



New regulation plan for Rognaldsvåg opens up empty locations in the waterfront



Rocky hillside

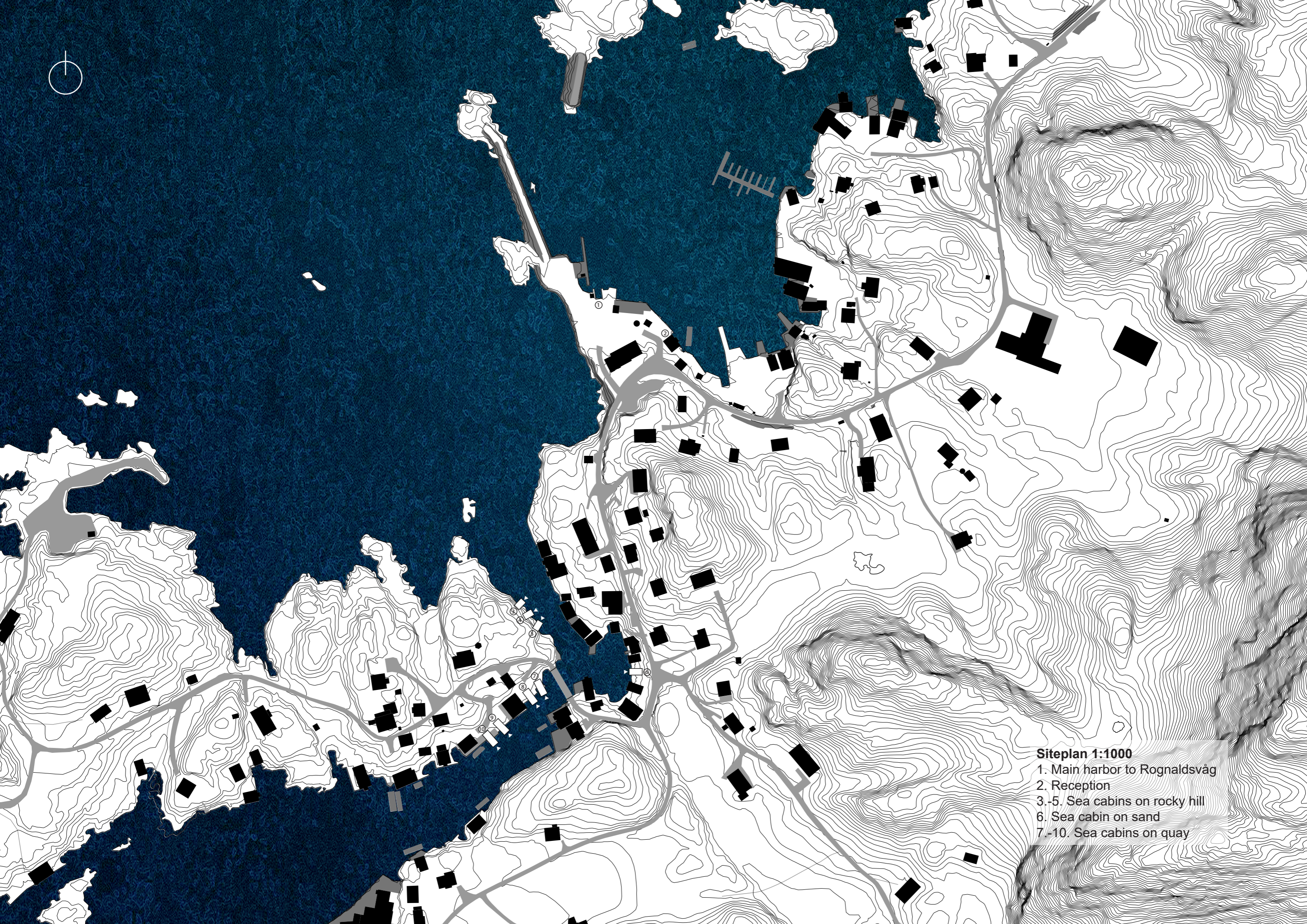


Sandy ground



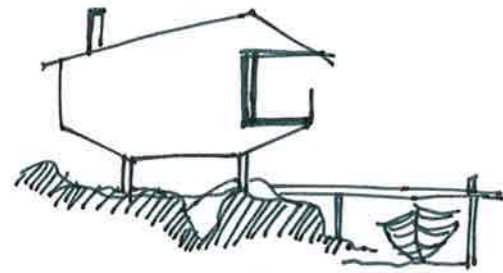
Quayside

Empty locations in three different situations

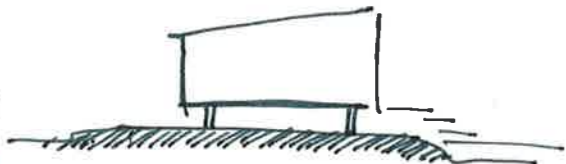


Siteplan 1:1000
1. Main harbor to Rognaldsvág
2. Reception
3.-5. Sea cabins on rocky hill
6. Sea cabin on sand
7.-10. Sea cabins on quay

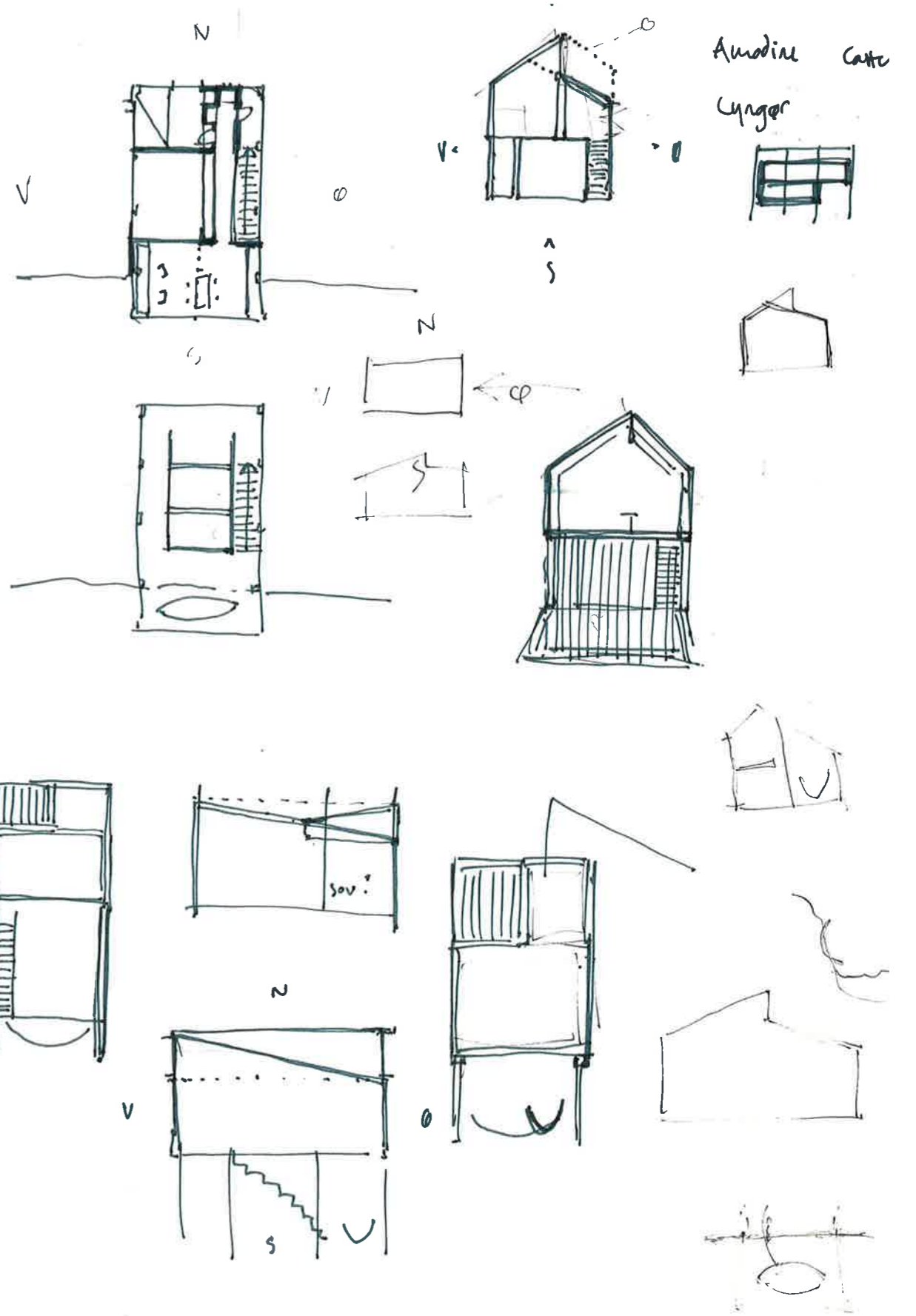
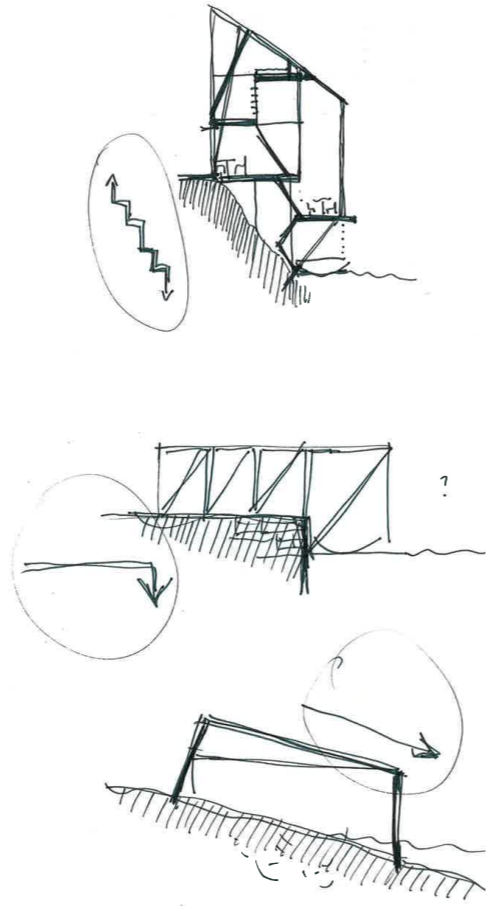
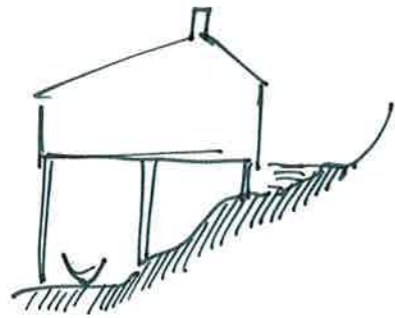
Kupert



flatt.
dörk
drenert

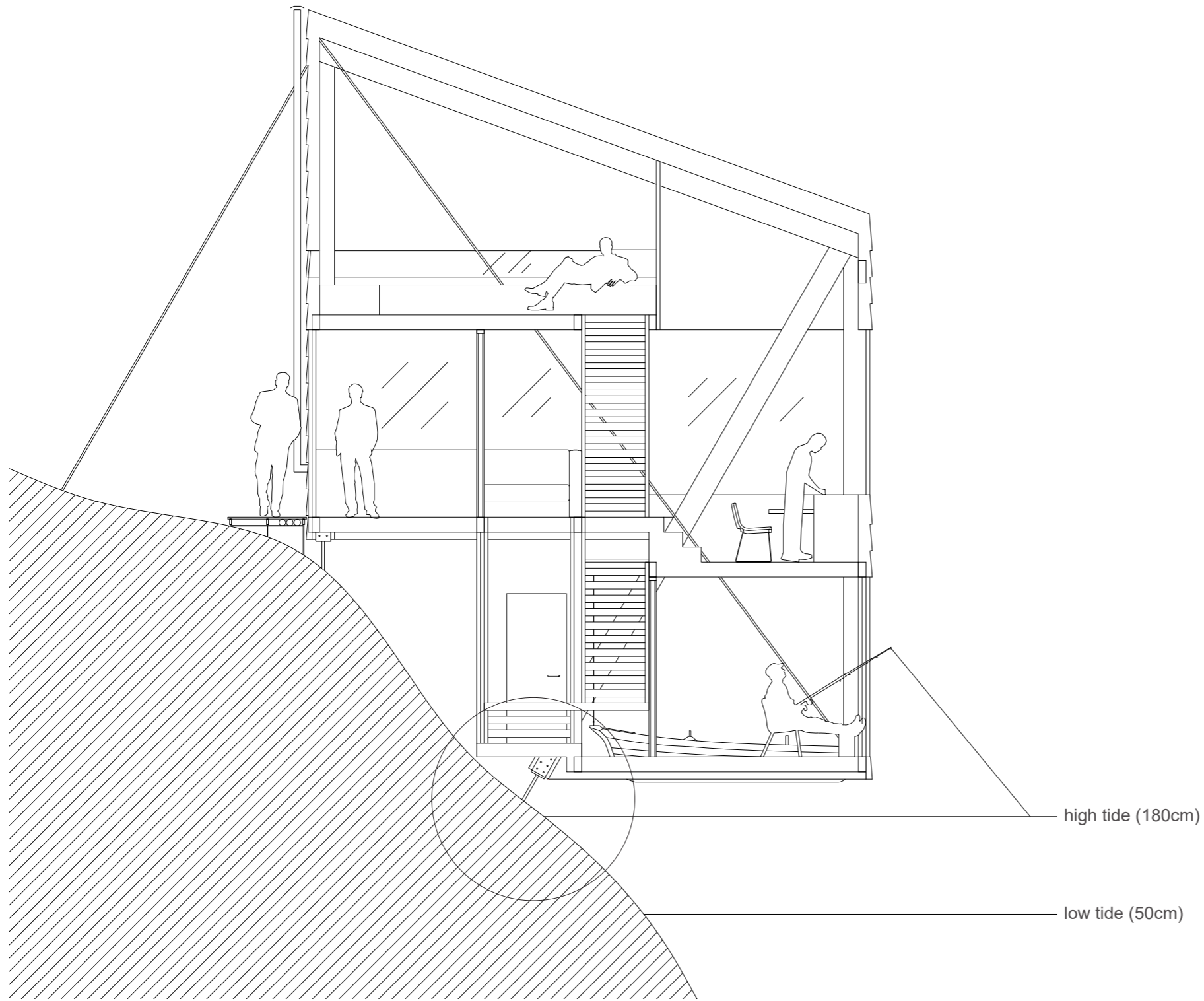


bratt

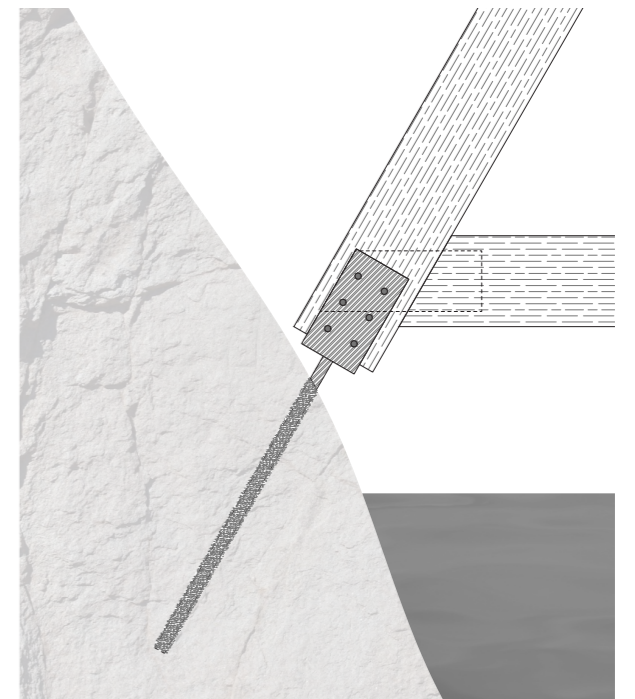


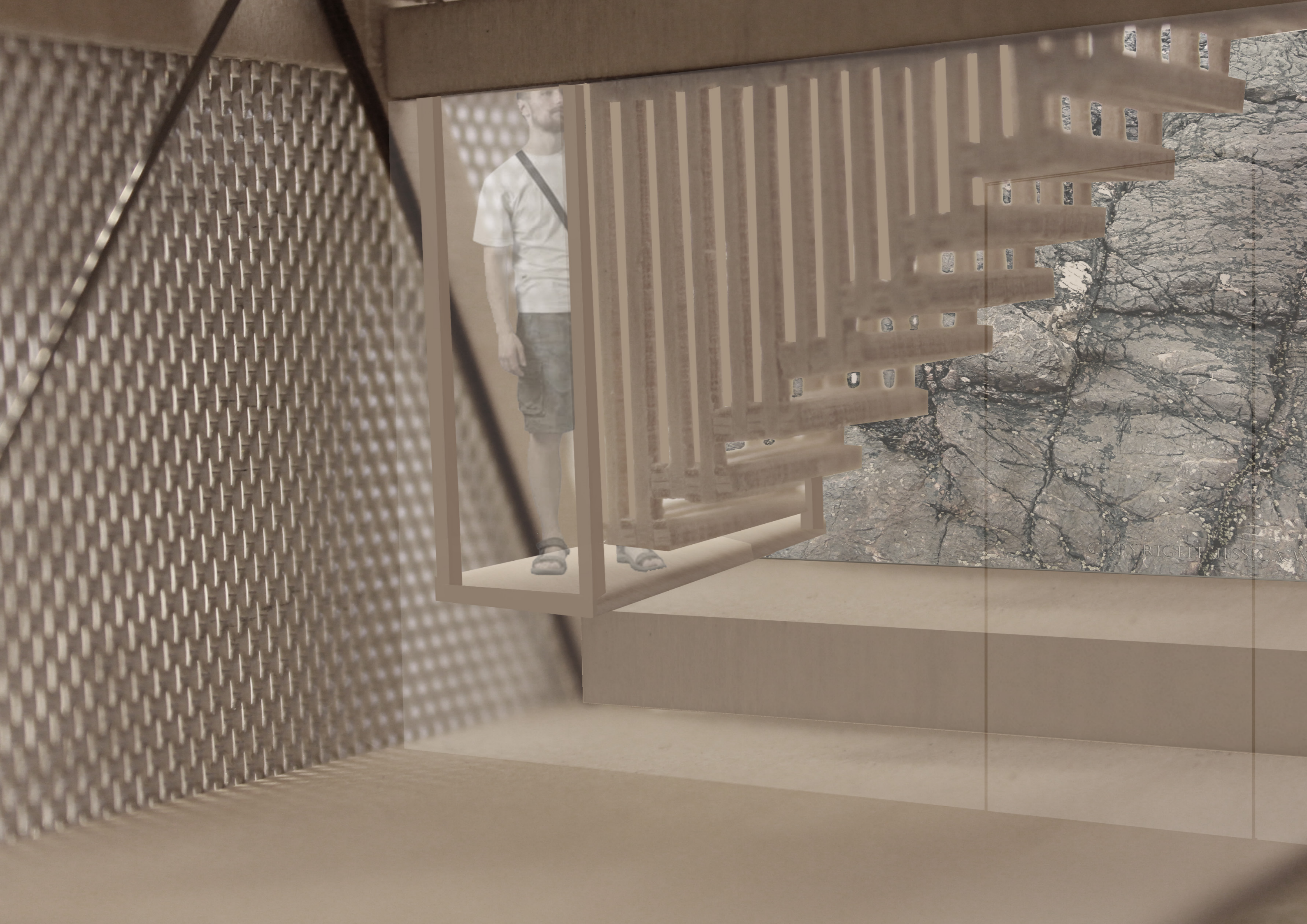


Cabin on rocky hill in context

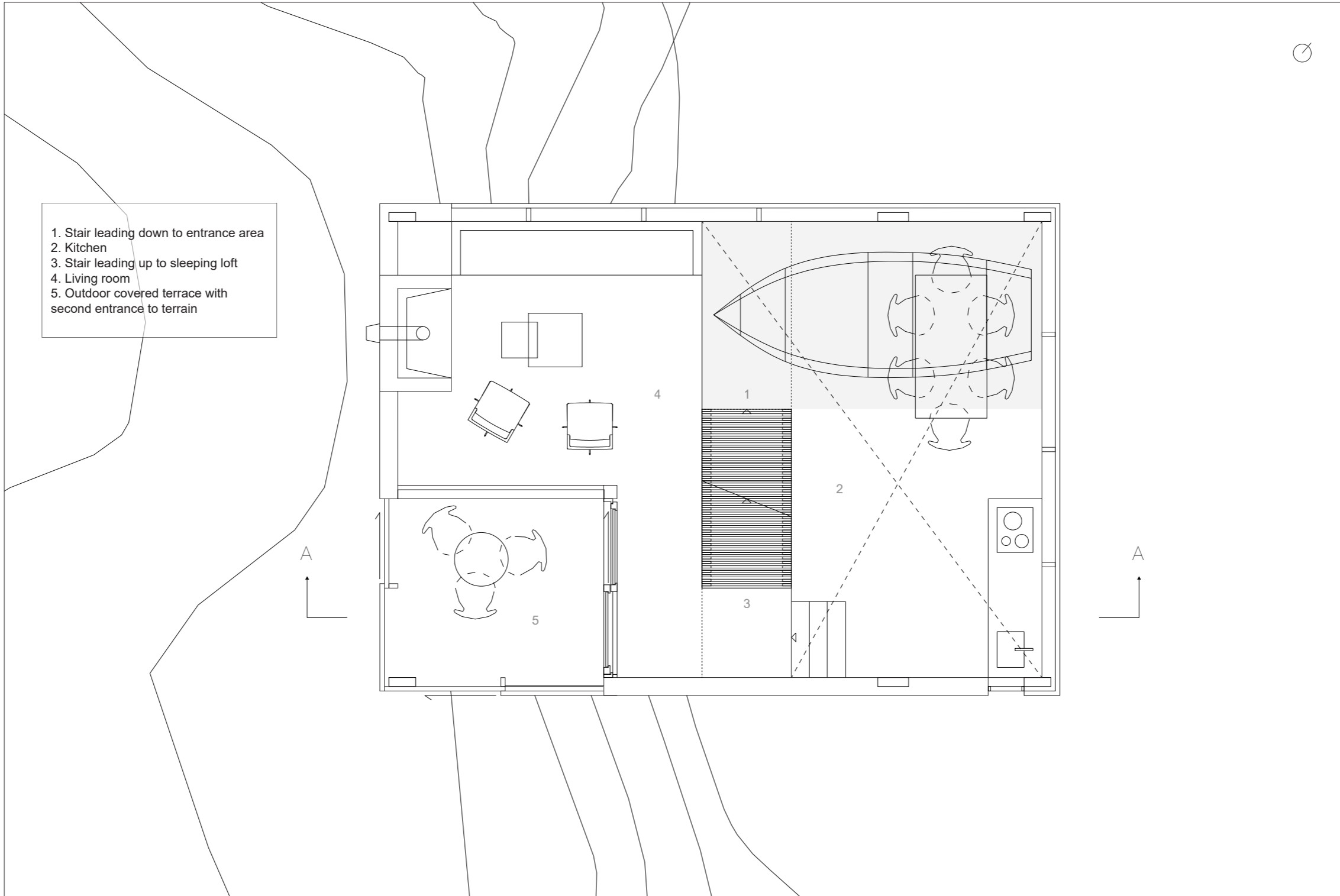


Section AA





COPYRIGHT JESSICA W



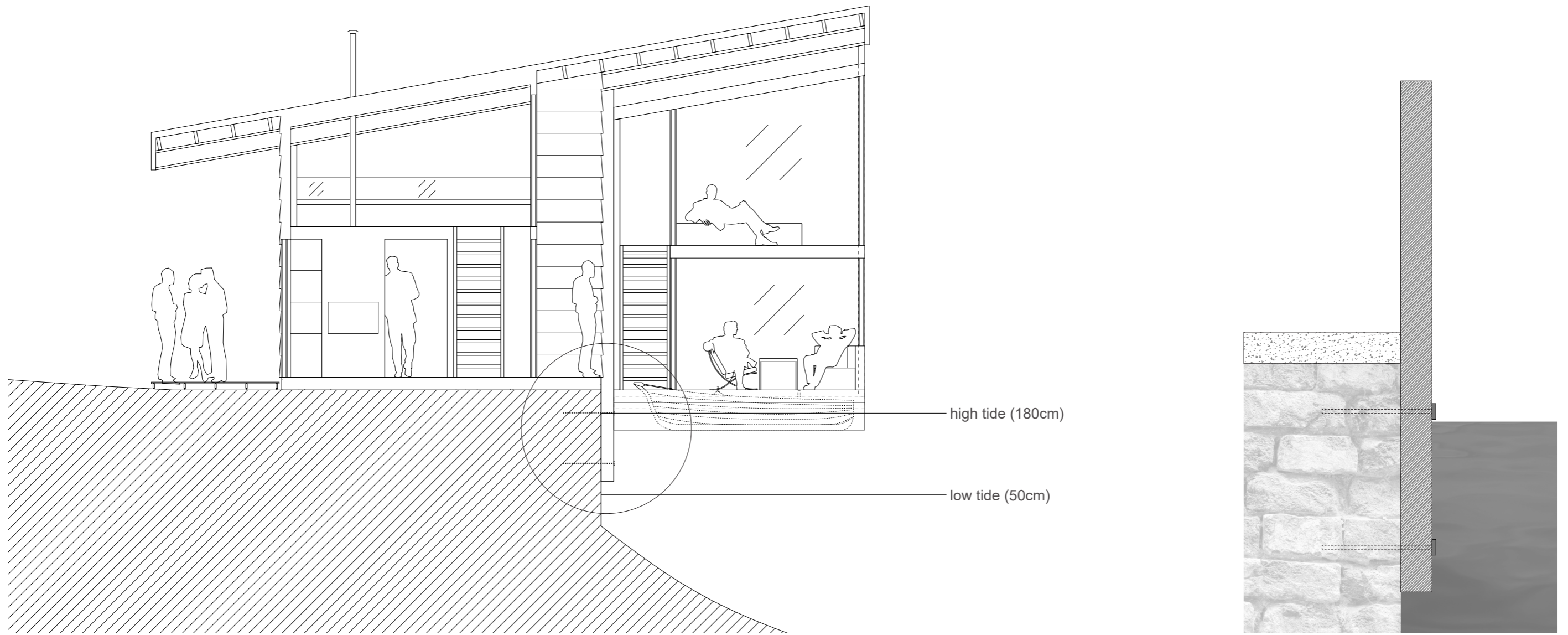
Plan 1:50



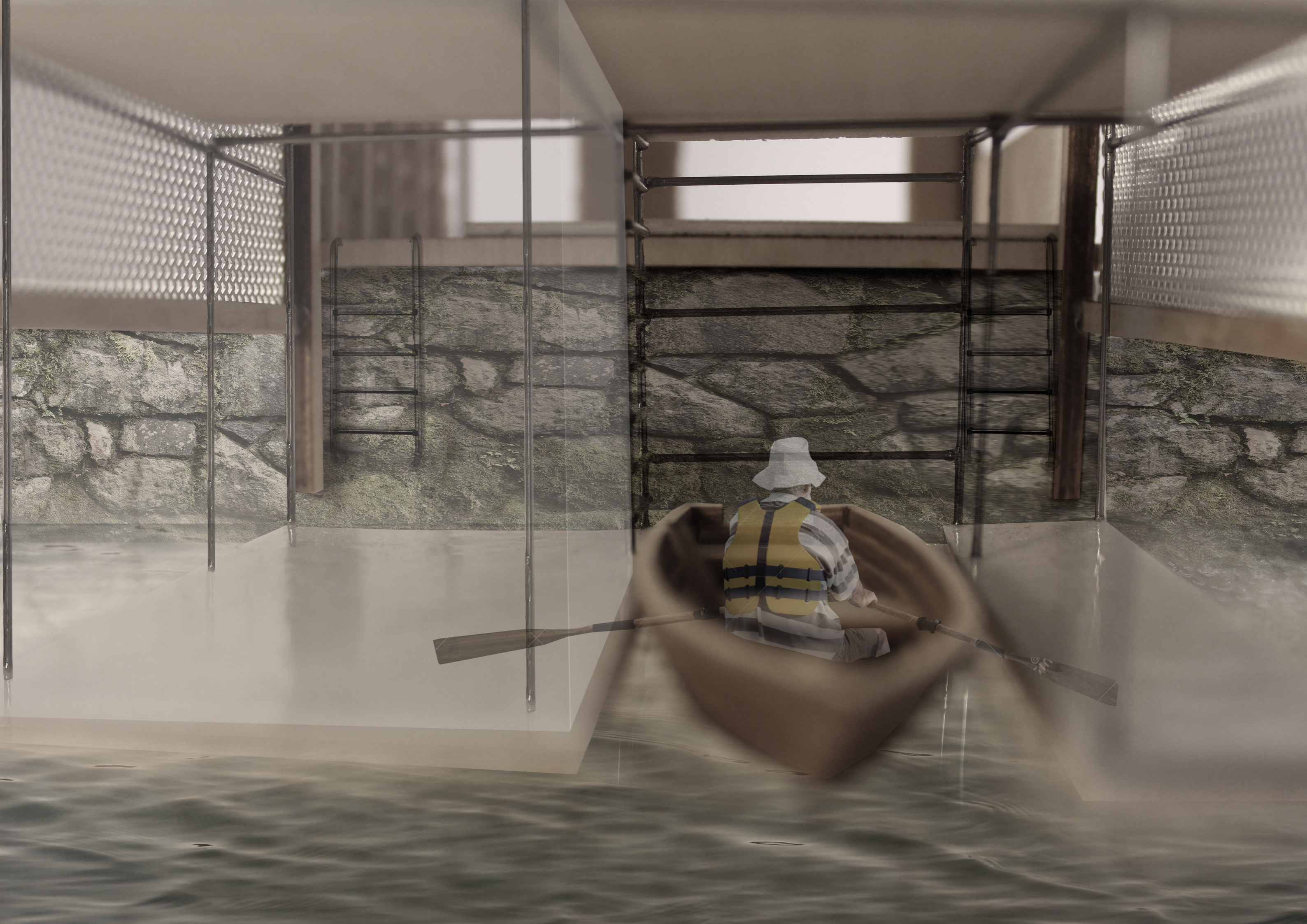




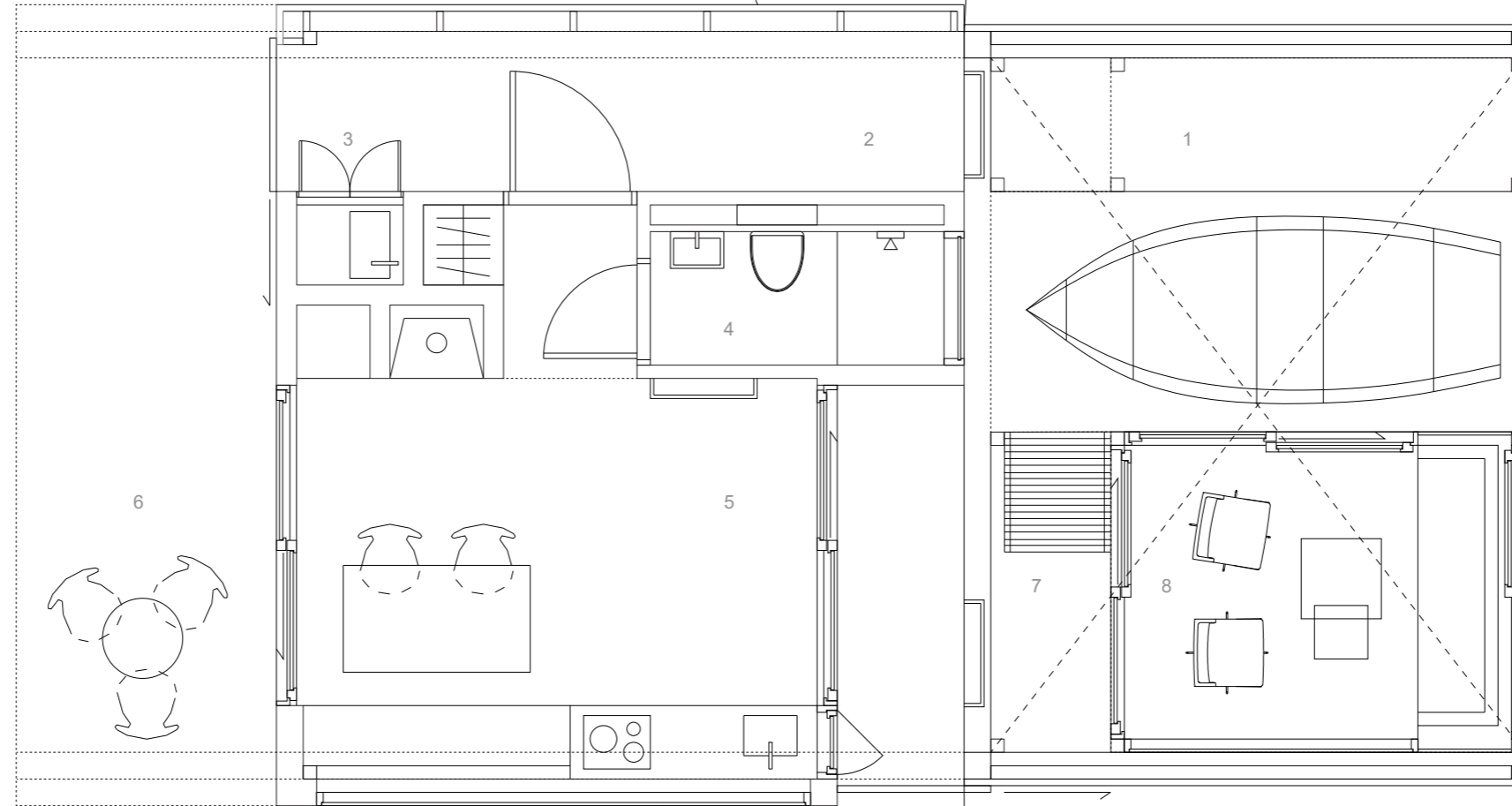
Cabin on quay in context



Section AA

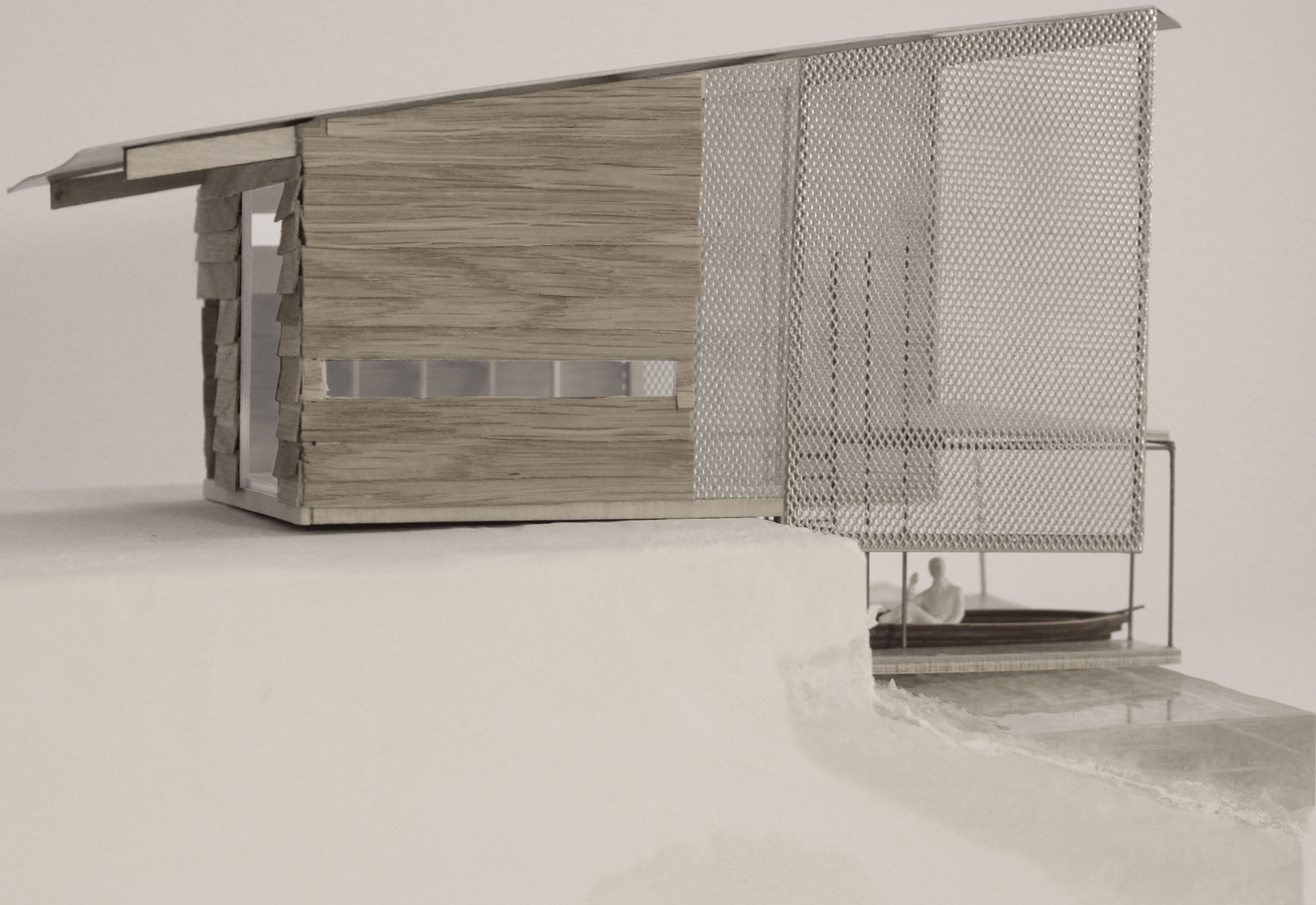


- 1. Floating dock
- 2. Outdoor covered hall/ wardrobe
- 3. Fish bench
- 4. Bathroom
- 5. Kitchen
- 6. Outdoor covered terrace
- 7. Stair leading up to sleeping loft
- 8. Floating living room



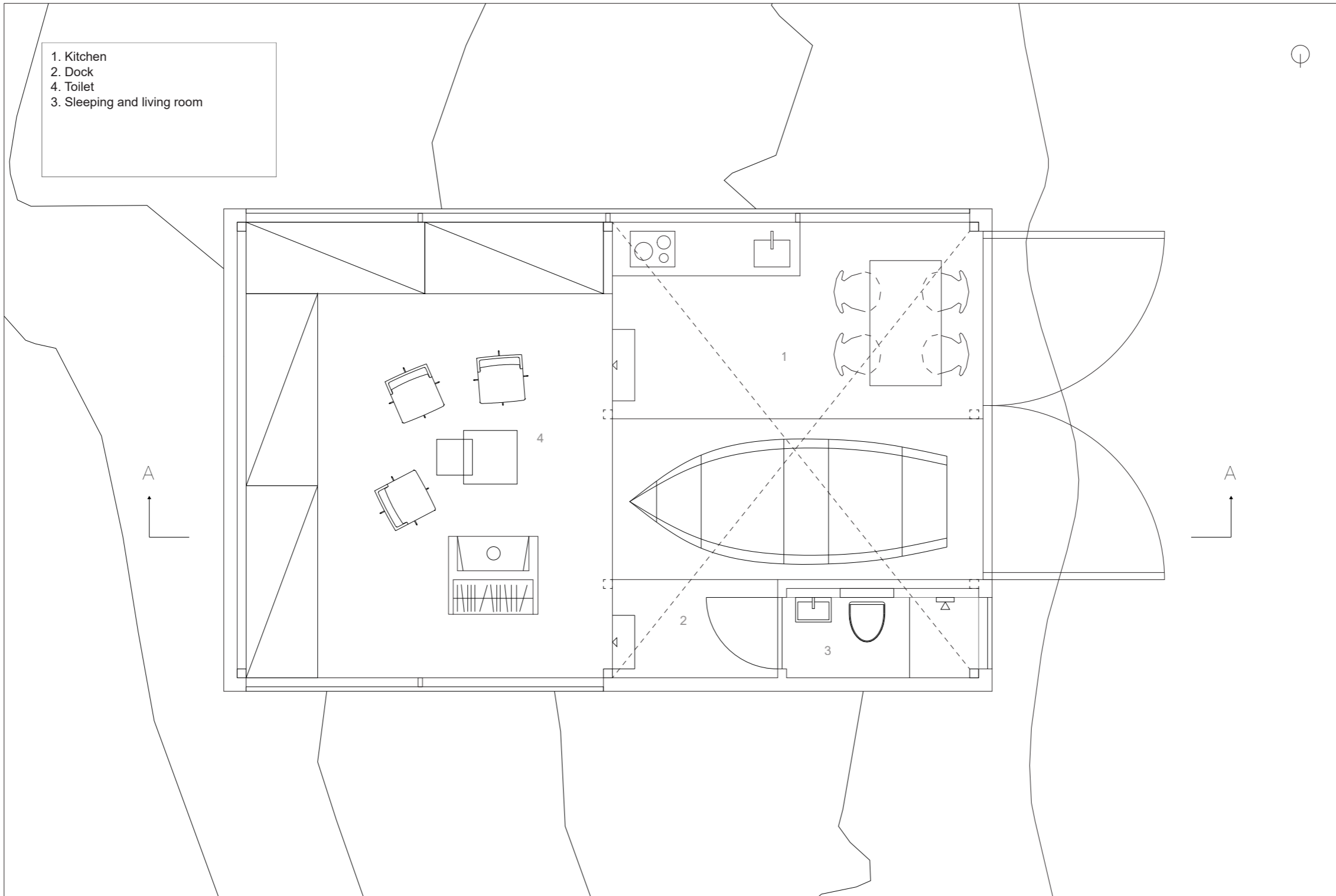
Plan 1:50







Cabin on sand in context



Plan 1:50

