

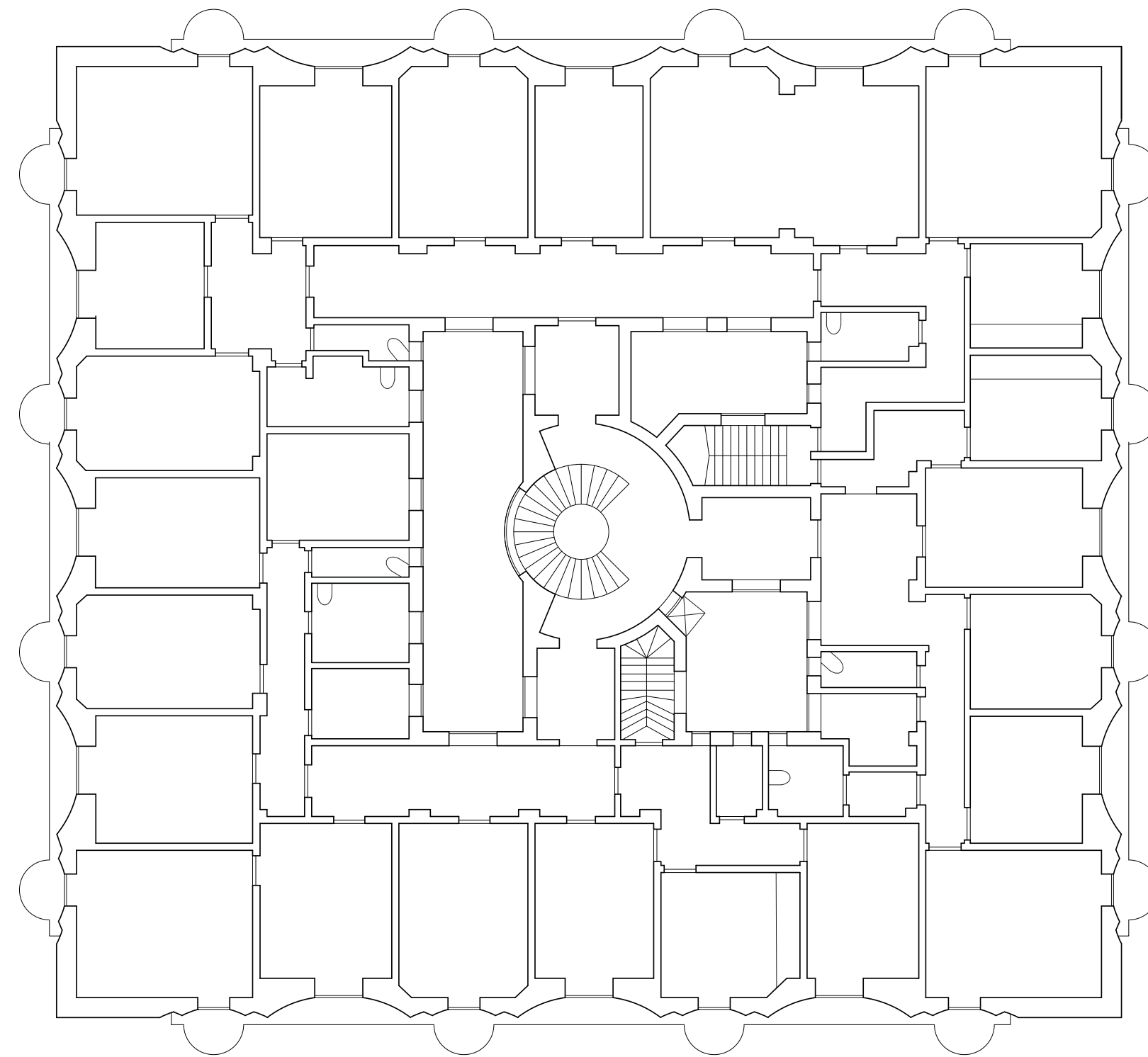
# An Urban Apartment Building in Oslo

Kaja Elise Skaskiewicz

Supervisors: Neven Mikac Fuchs, Young Eun Choi



*the plan for living*   *the role of the facade*   in relation to   *urban apartments*



Pietro Aschieri, *Palazzina d'Salvi*, Rome 1929-30

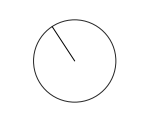


Richard Norman Shaw, *Albert Hall Mansions*, London 1876-1886

The observed issues and main concerns:

*The durability of apartments* and *How the building relates to the city and provide comfort for its residents.*





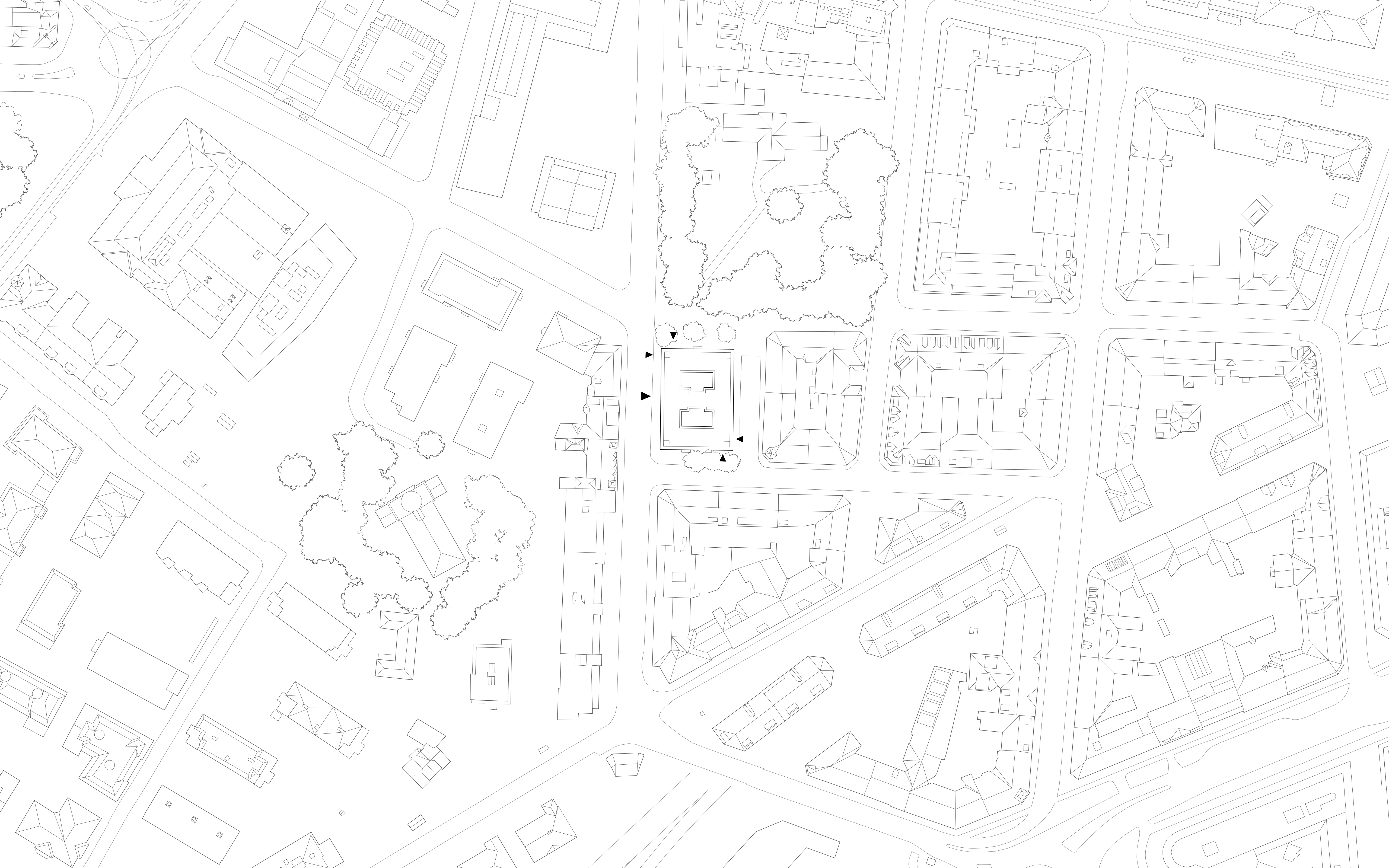


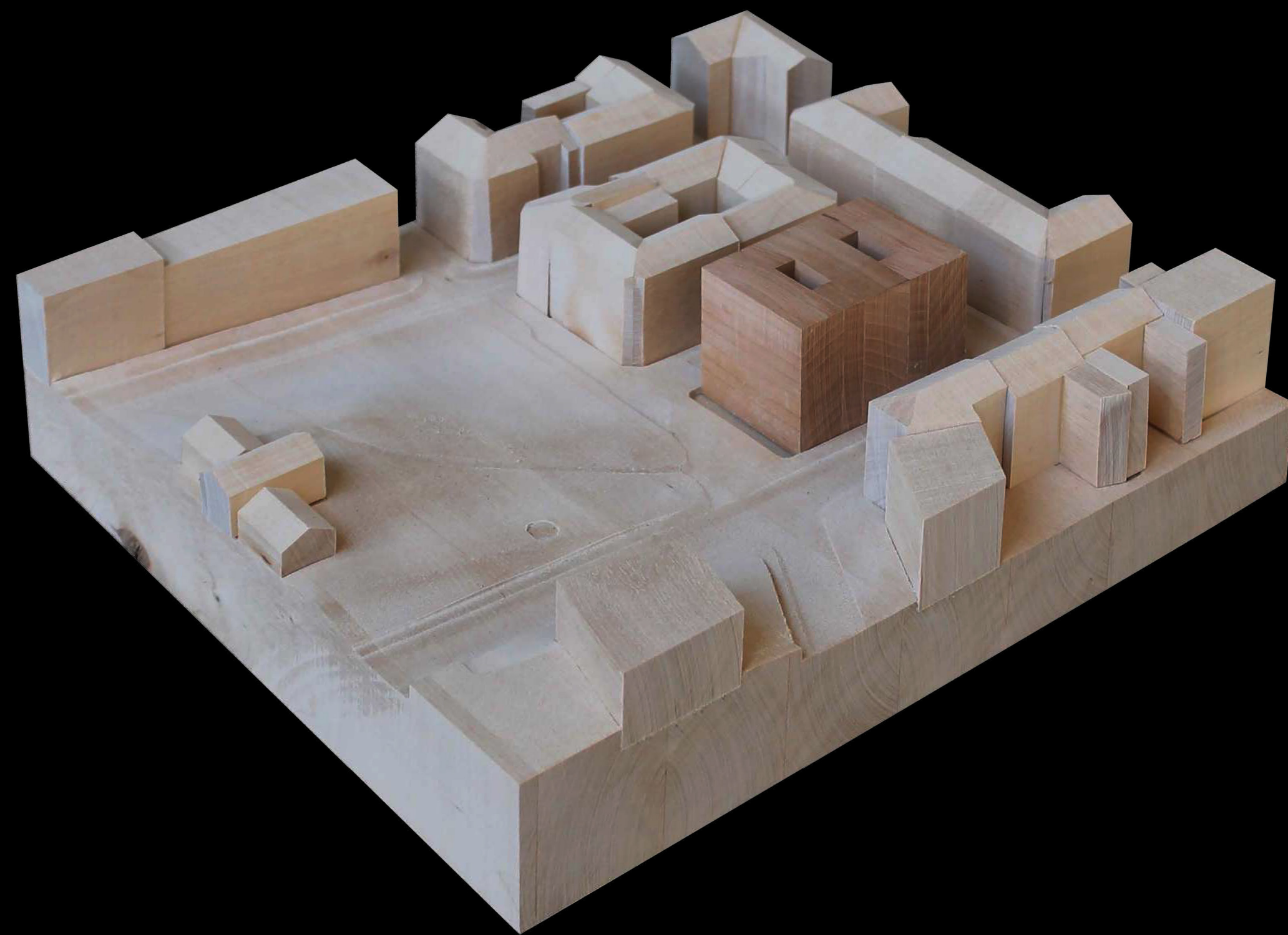






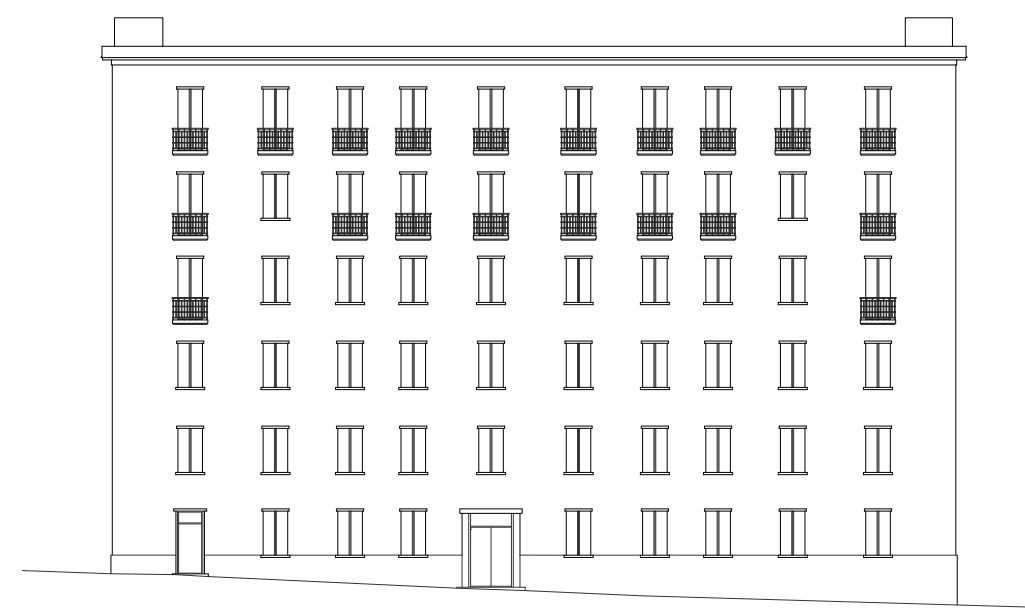








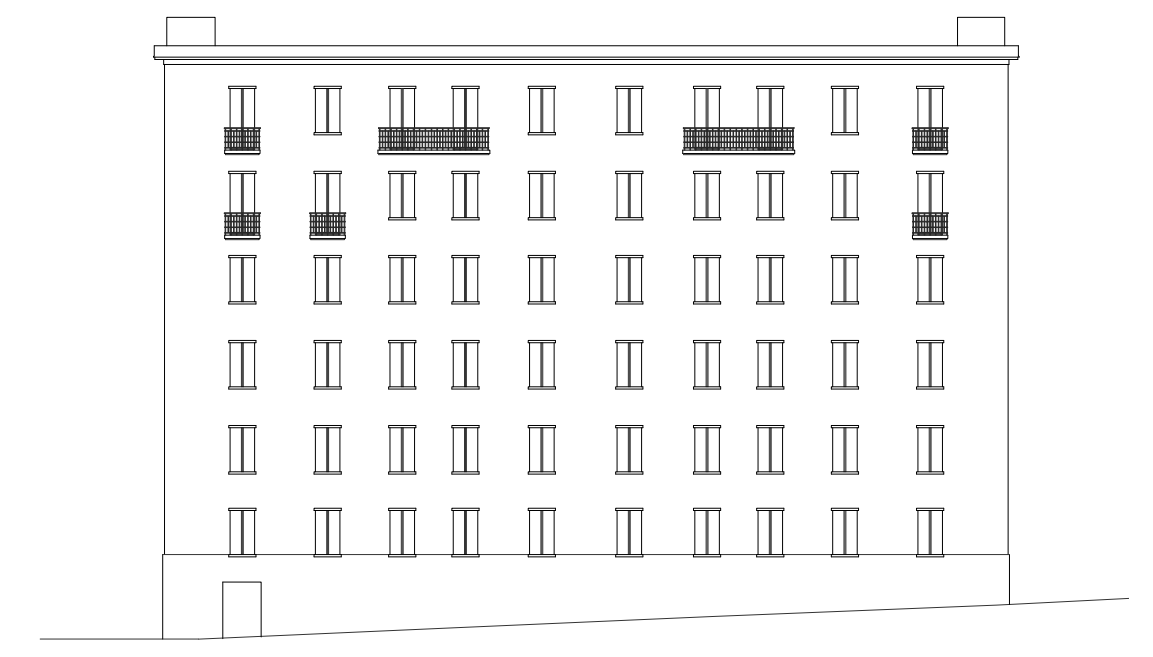
*N*



*W*



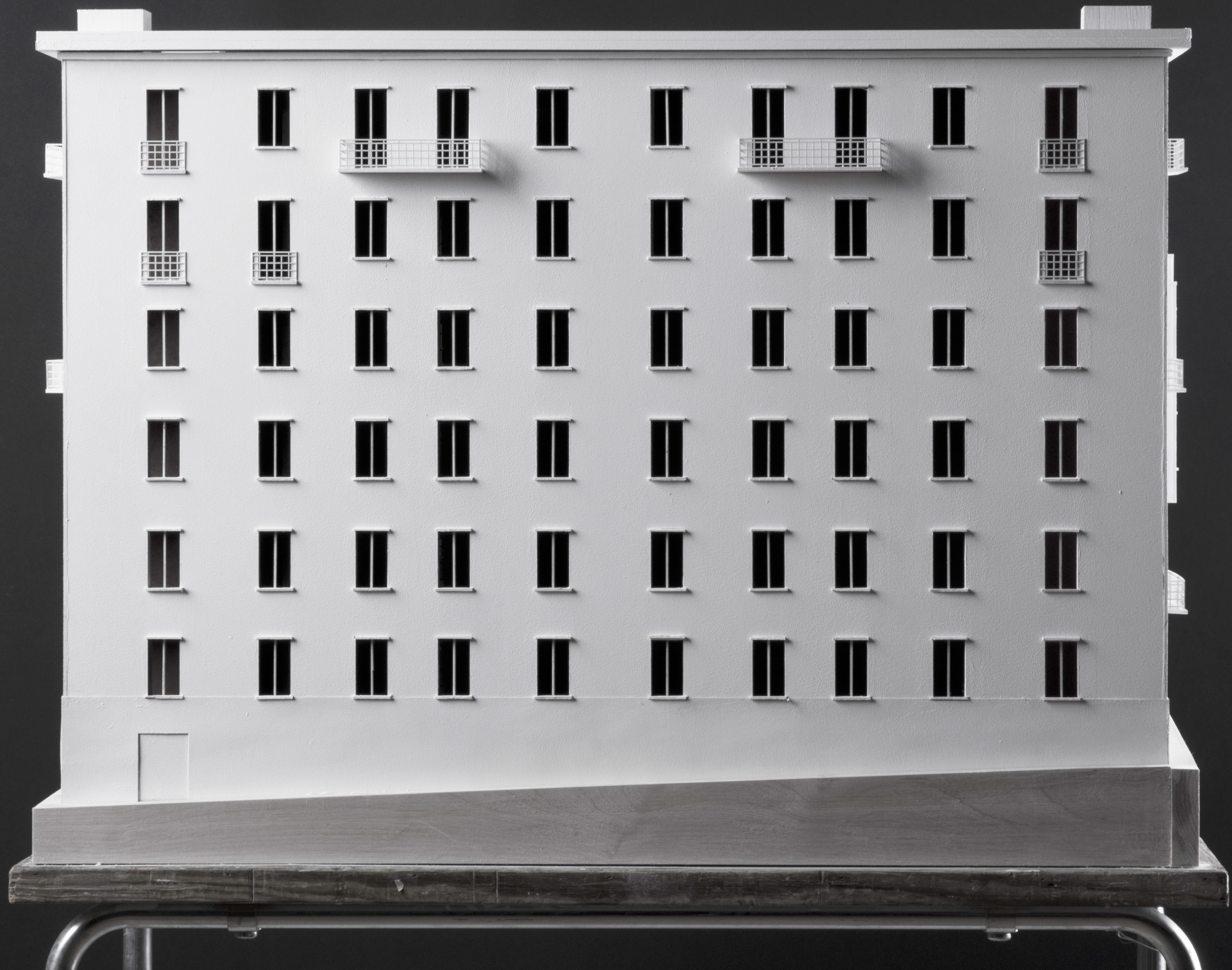
*S*

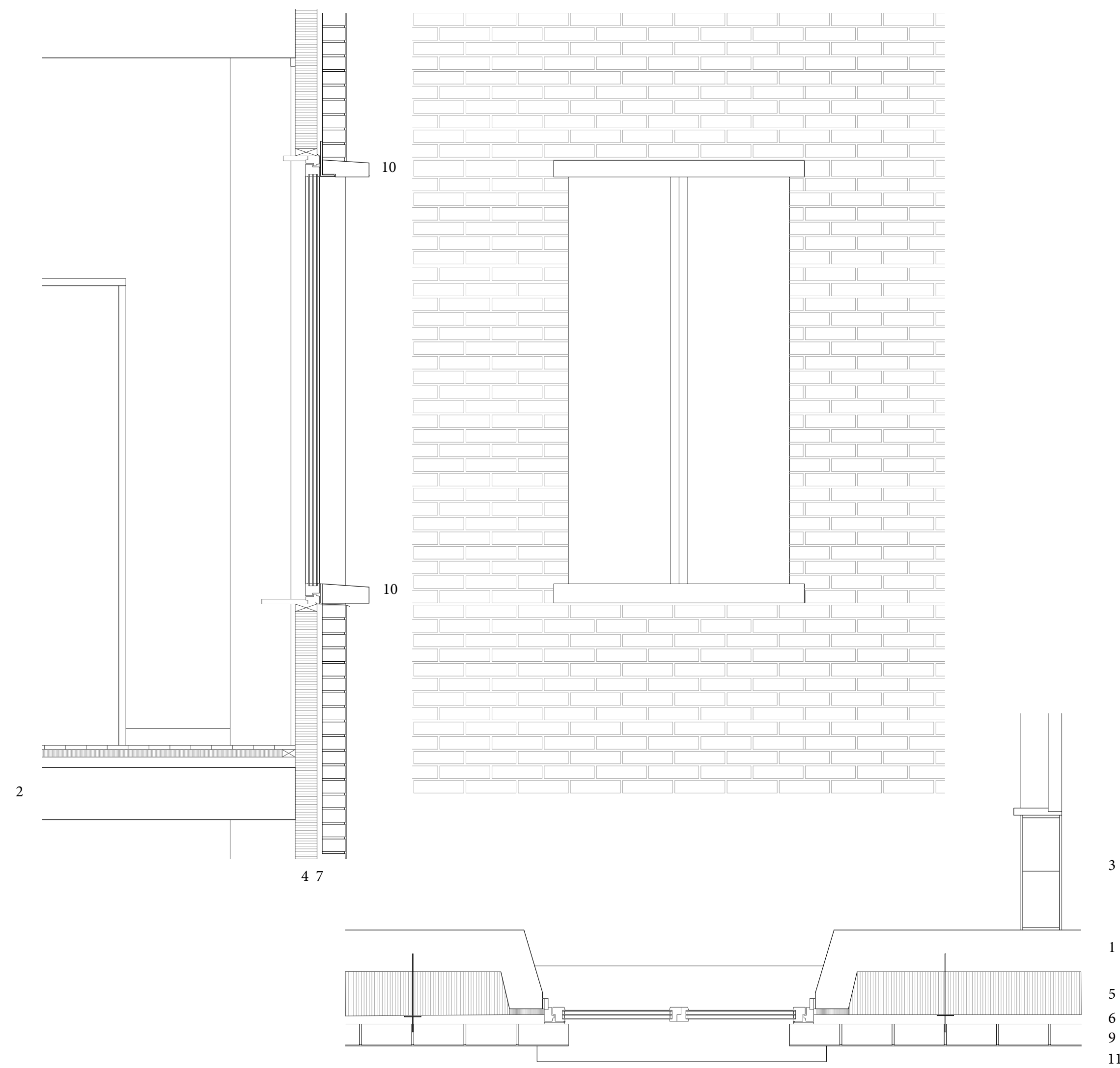


*E*



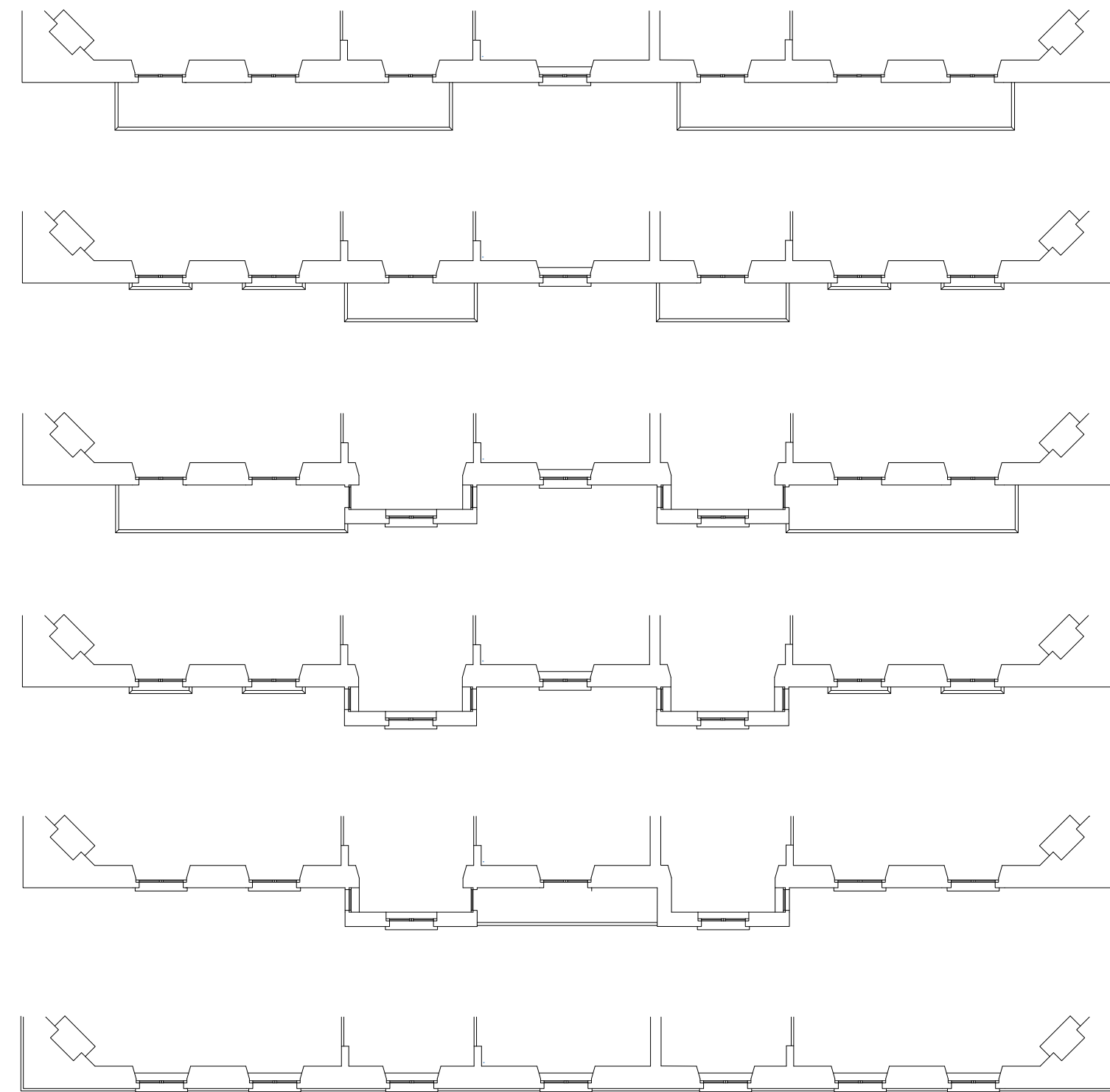


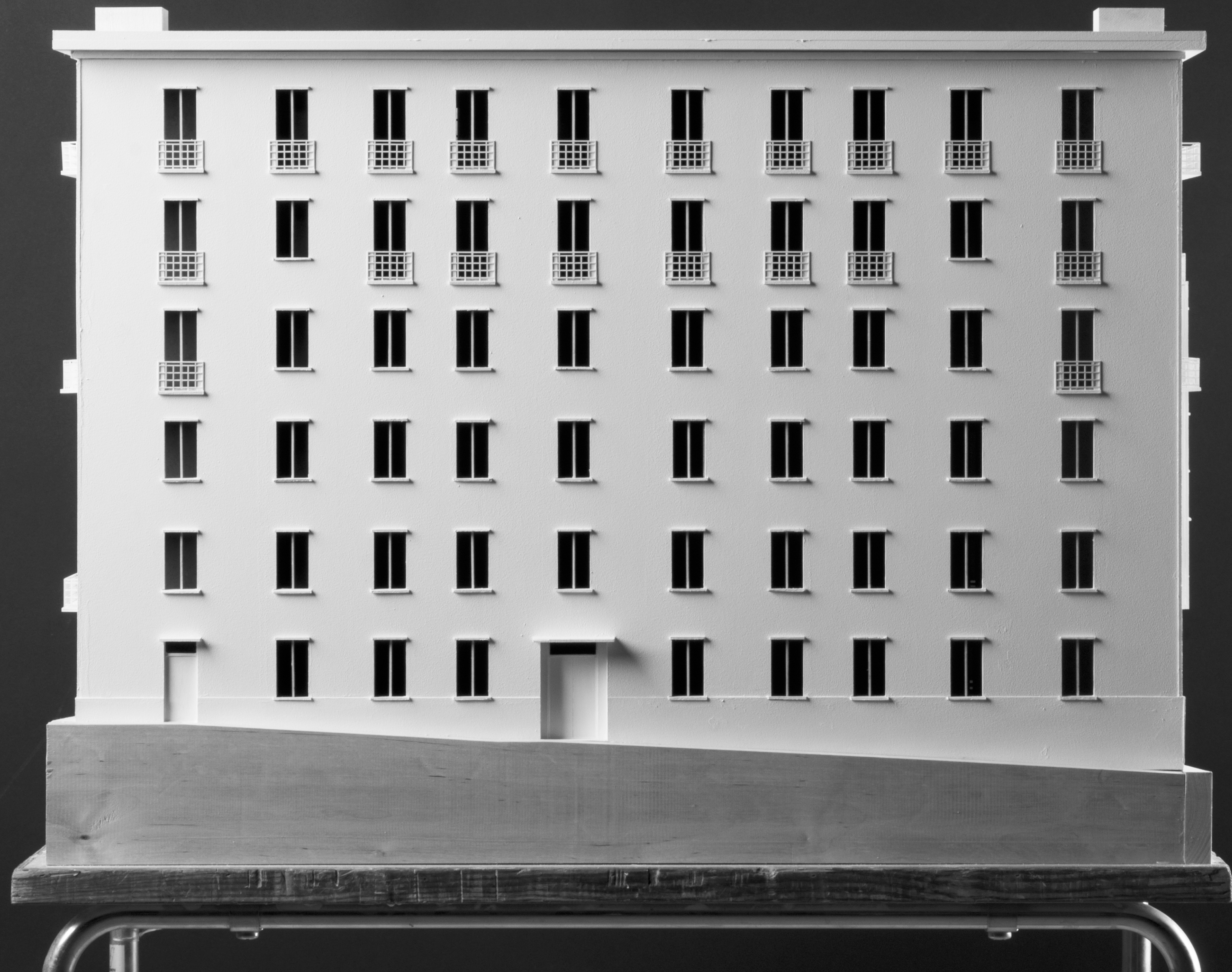


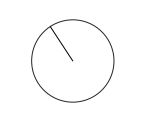
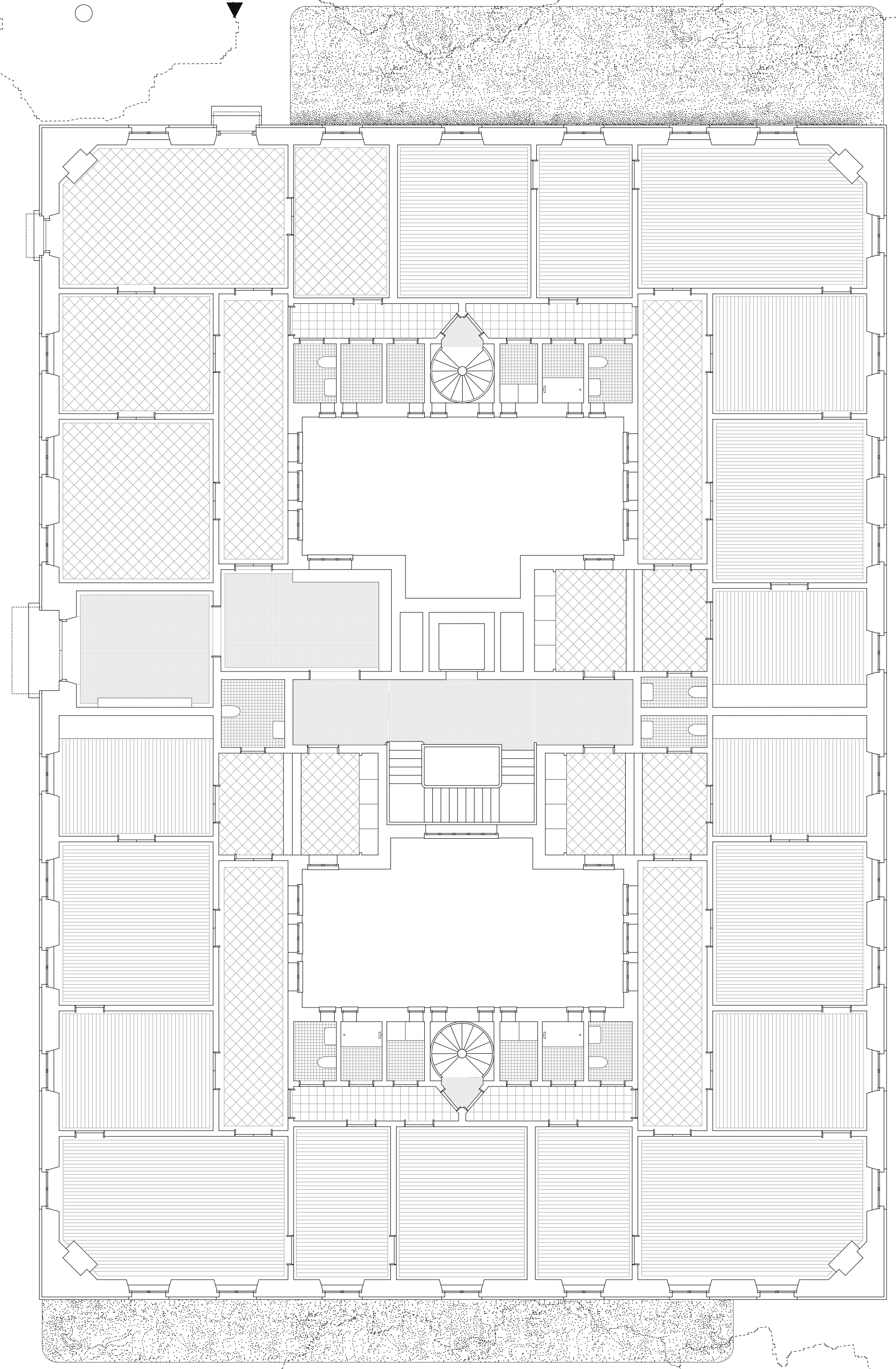
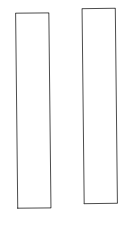


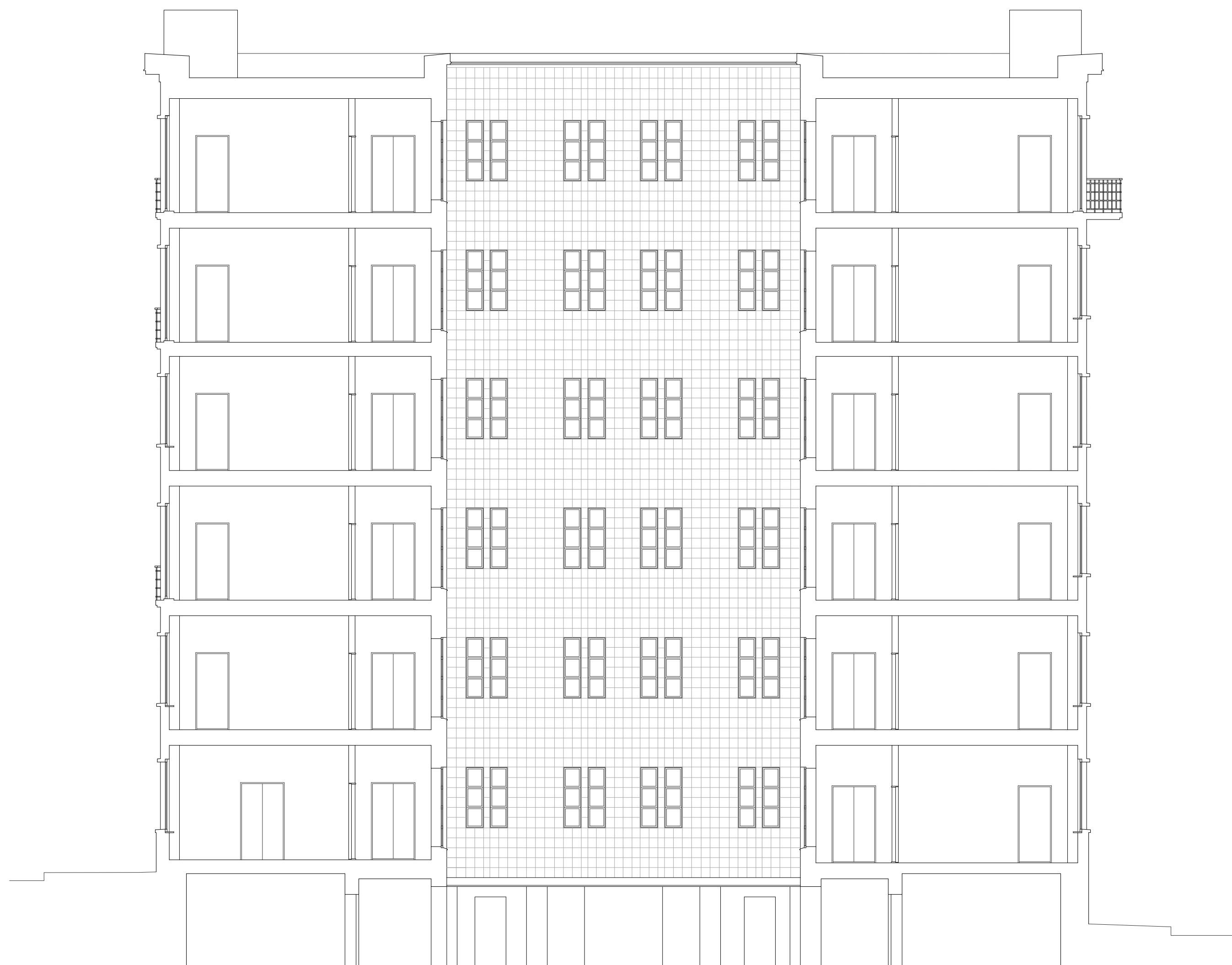
- 1 Pre-cast concret elements
- 2 In-situ concret slabs 250 mm
- 3 Leca 175 mm
  
- 4 Insulation 100 mm
- 5 Insulation 200 mm
- 6 Air gap 45 mm
- 7 Air gap 25 mm
  
- 8 Brick cladding
- 9 Sill/lintel concrete
- 10 Mortar



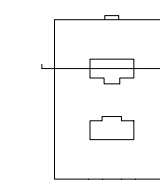


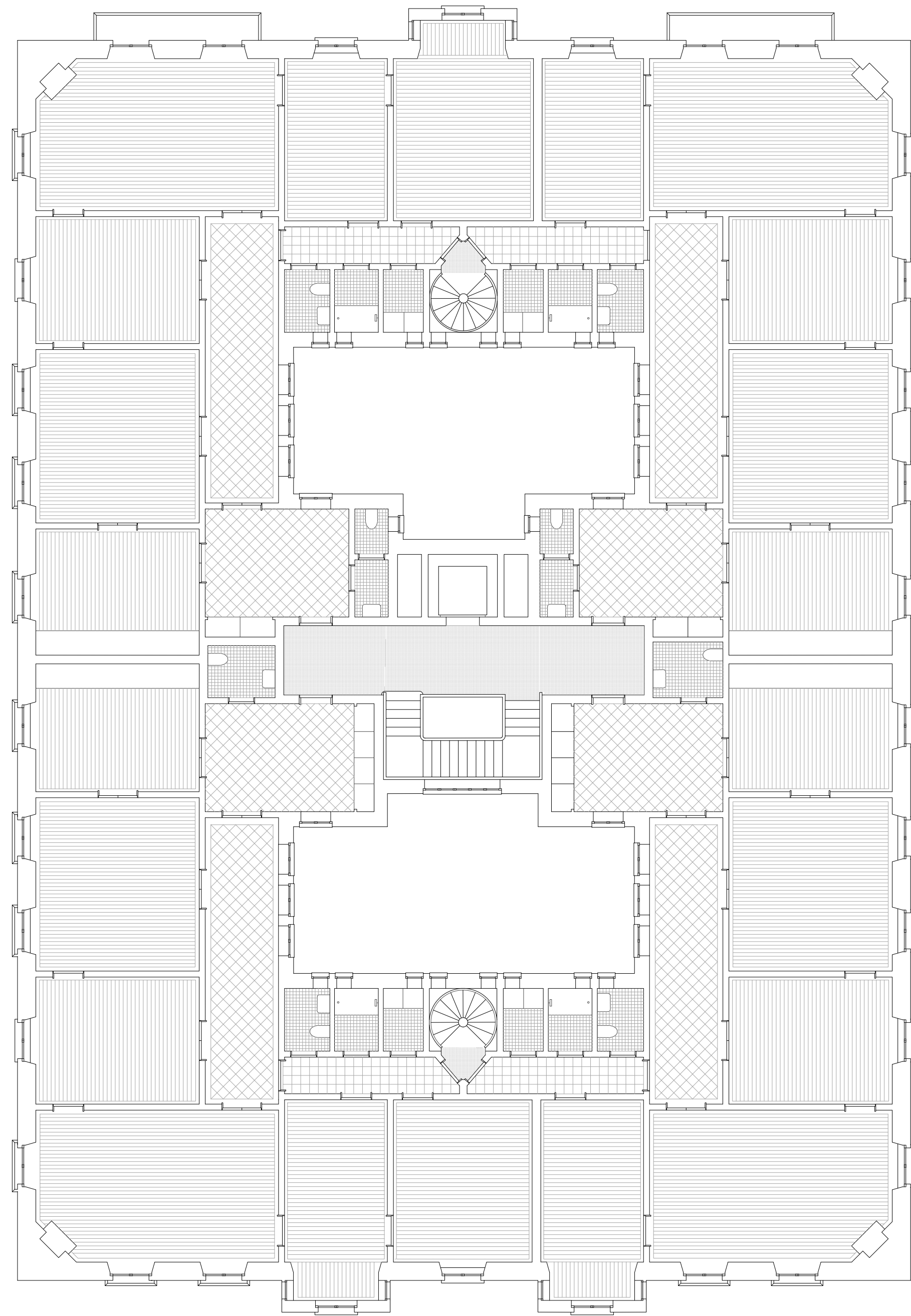




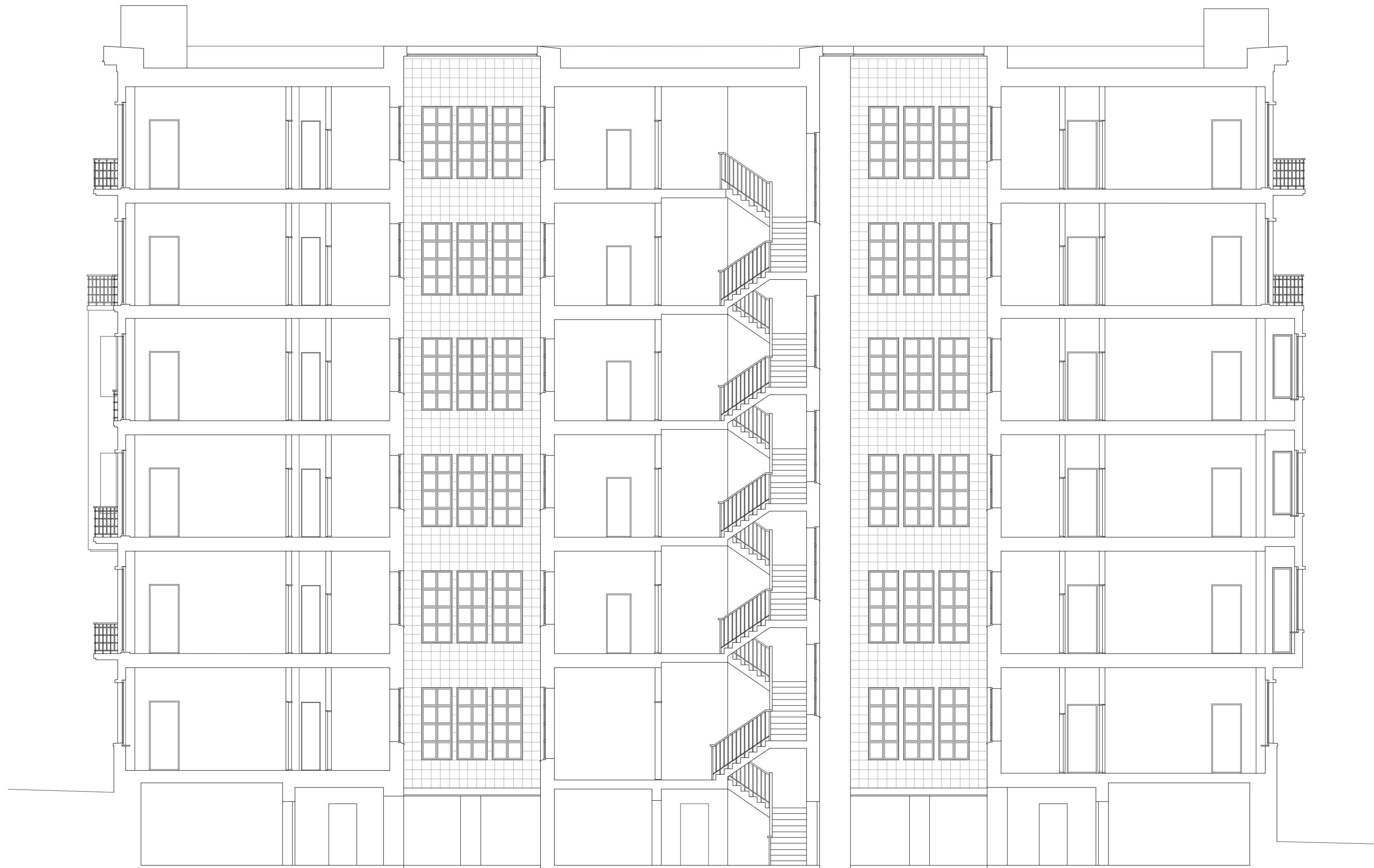


1  
5

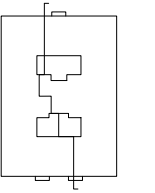


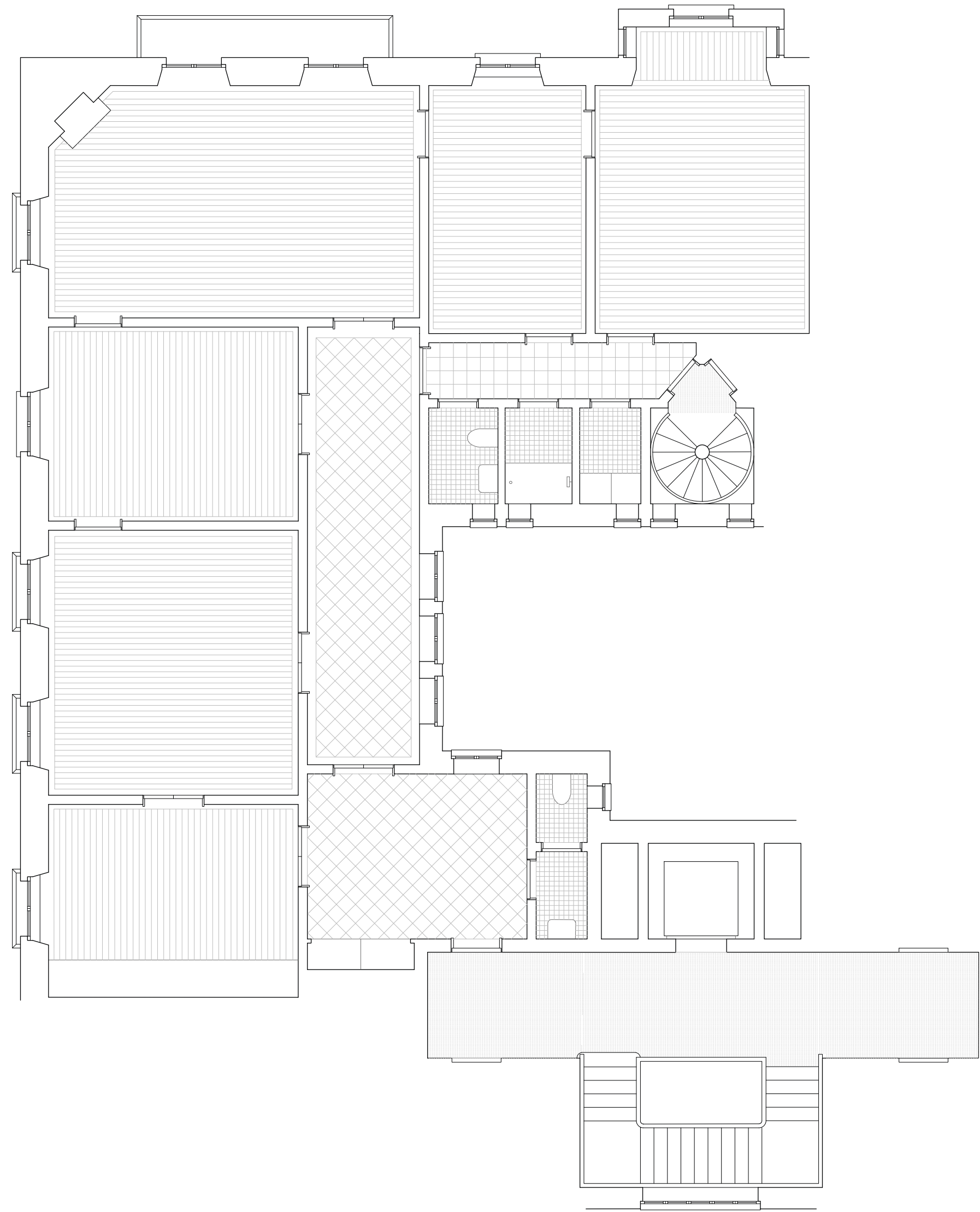






1  
5





1  
5

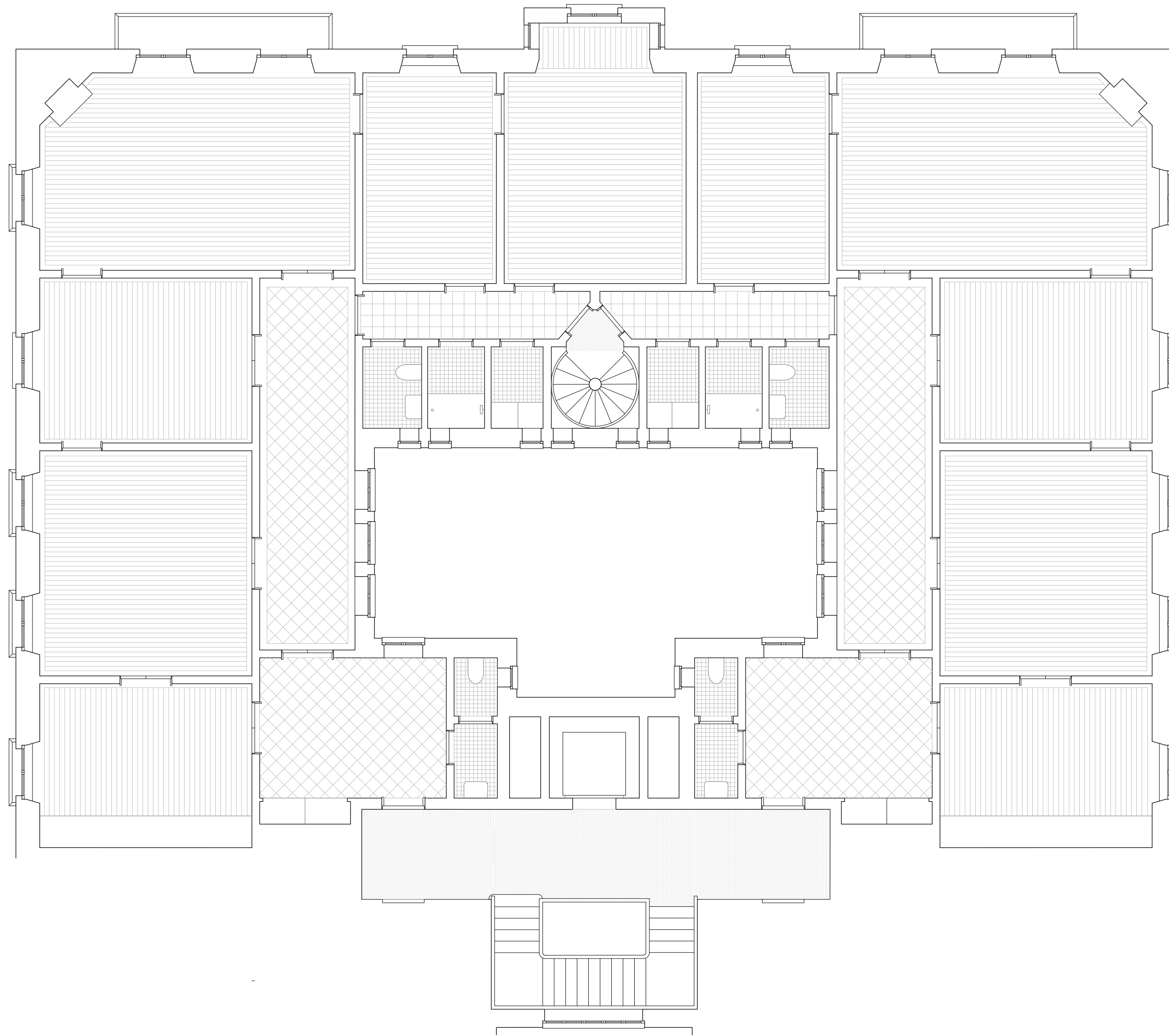




Interior of the enfilade



Interior of the corner room



1  
5





Interior of the gallery space