

HAMMAR BISPEGAARD MUSEUM PLAN NEDDERSTE ETASJE. SVENRIE FEHN ARKITEKT M NAL

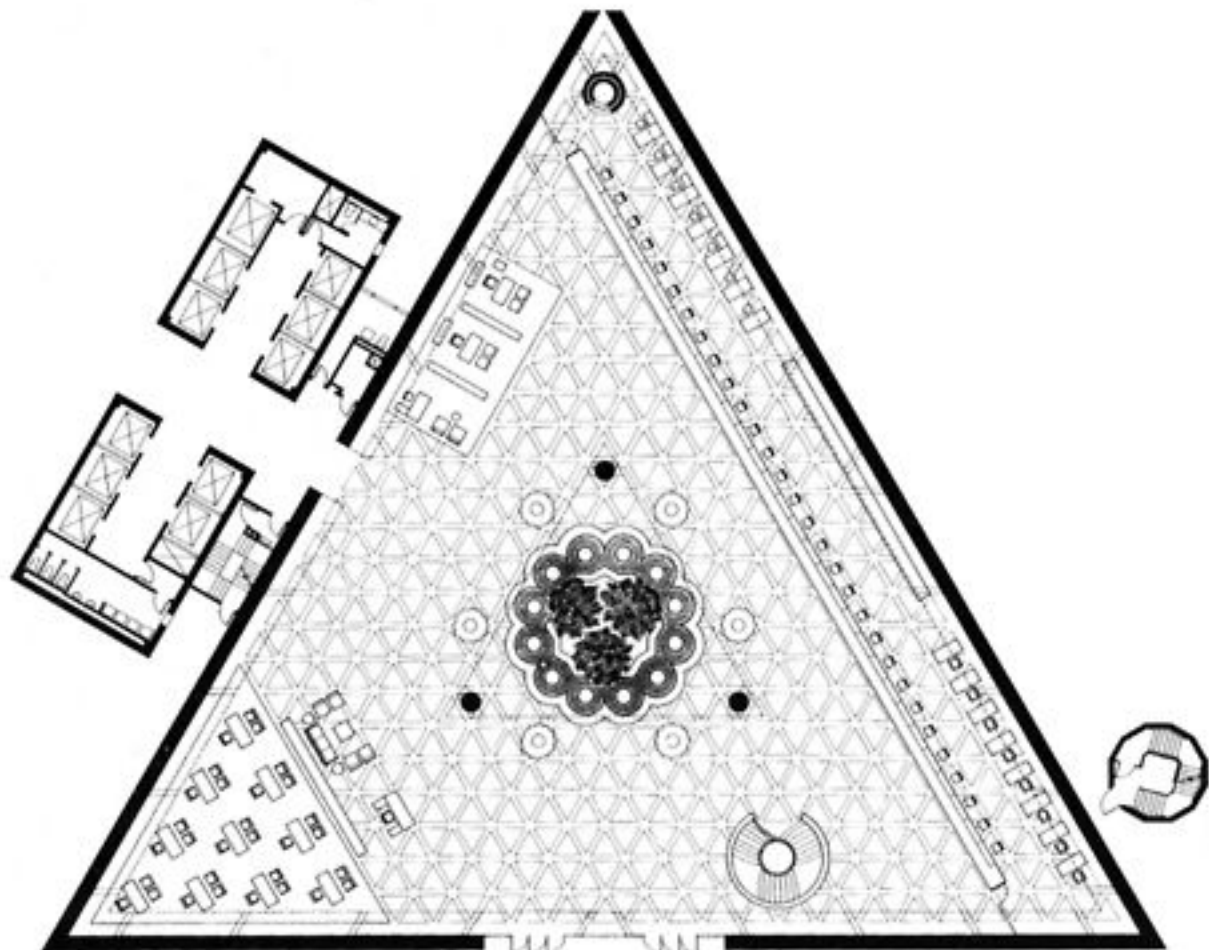




333501, L.M.C.H



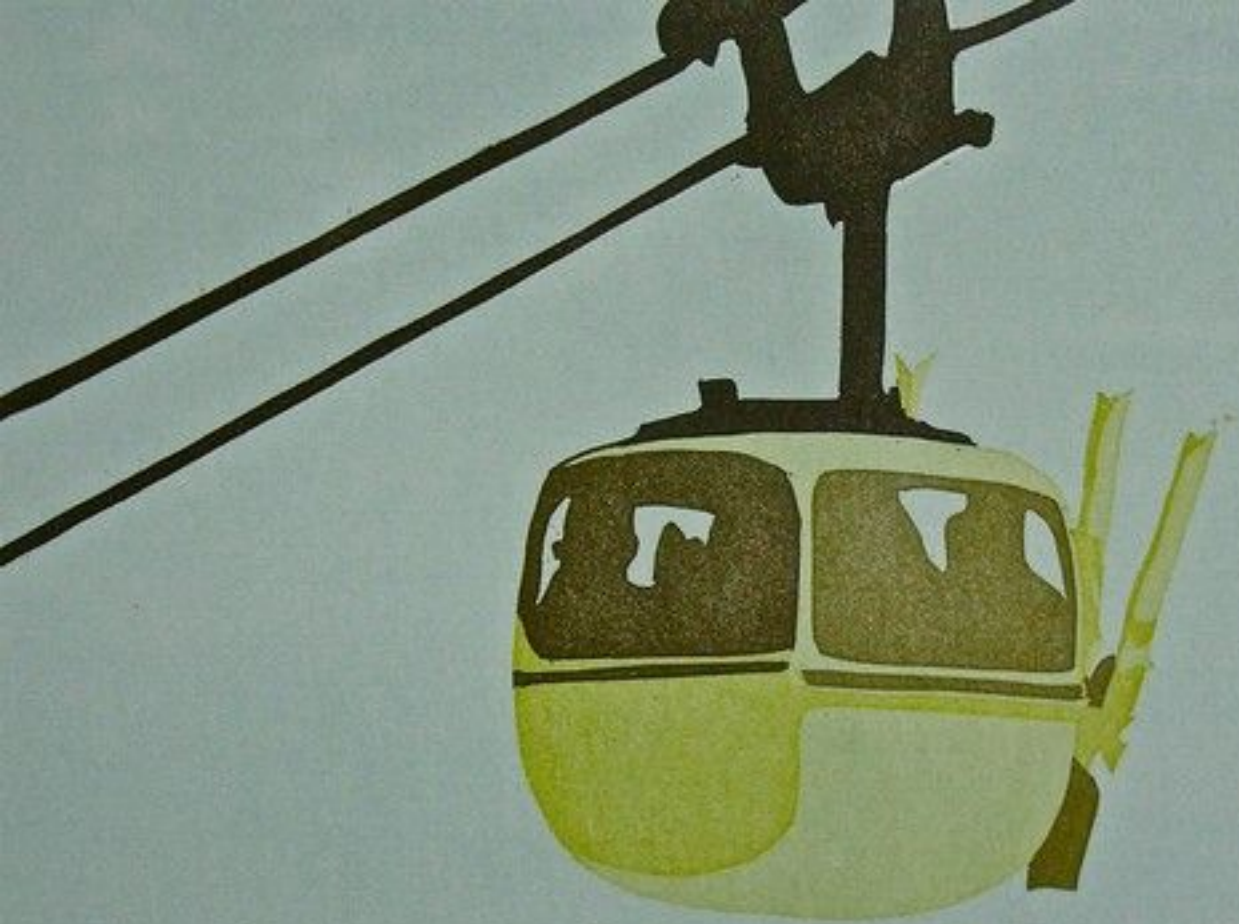






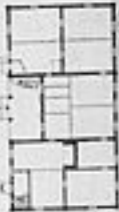
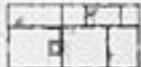








LEBENDU
STADT



1:1000

1911

STADT-ARCHIT. NO. 1000
1911











指南宮站

Zhinan Temple Station



指南宮站

Zhinan Temple Station





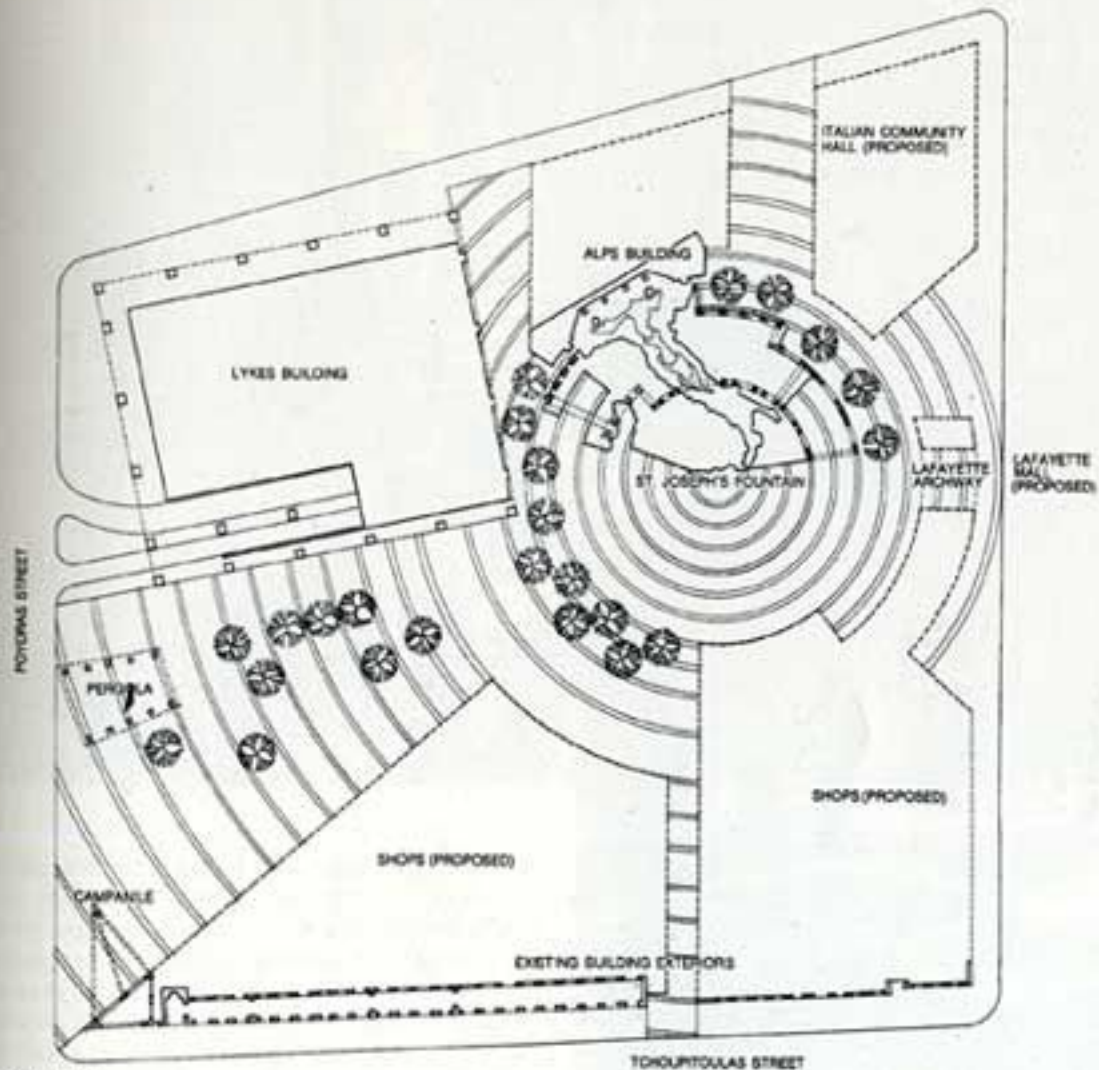












SITE PLAN

THOURLoux STREET





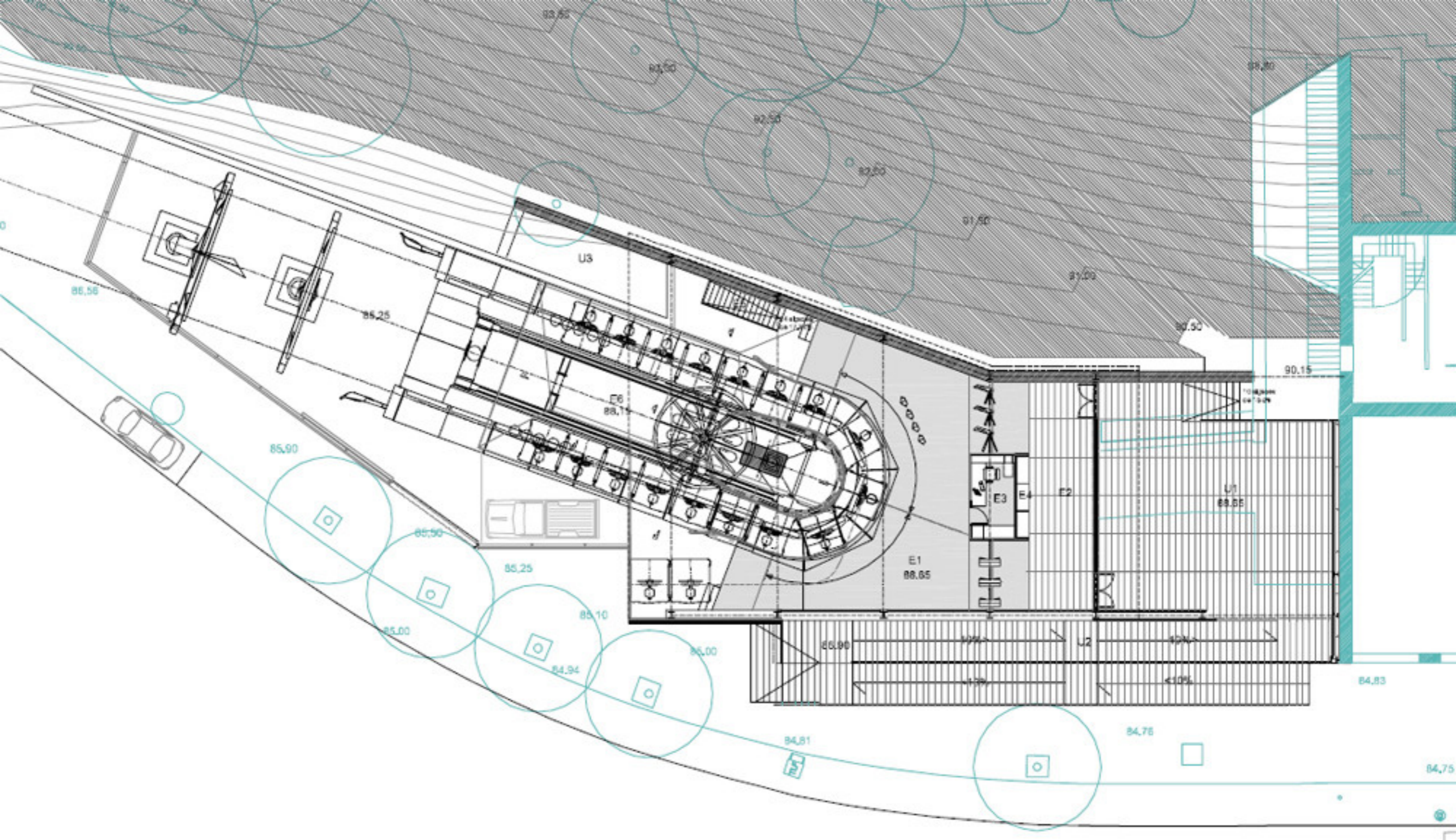




Mürren-Stechelberg

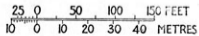
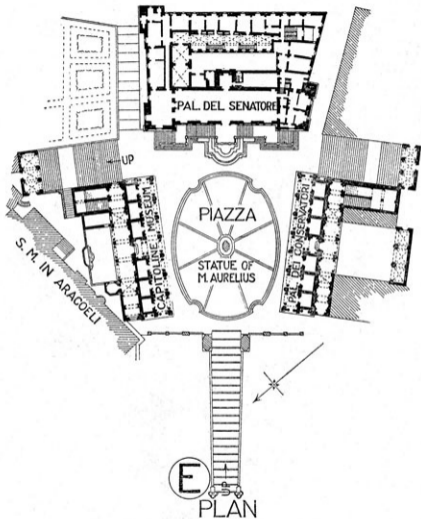
swisscom

Kasse





























TOTALLY
COOL
MIX



5



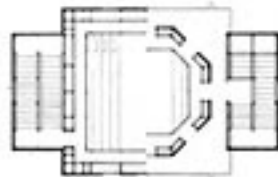
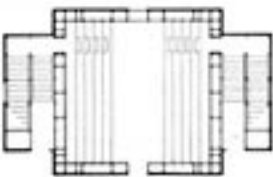














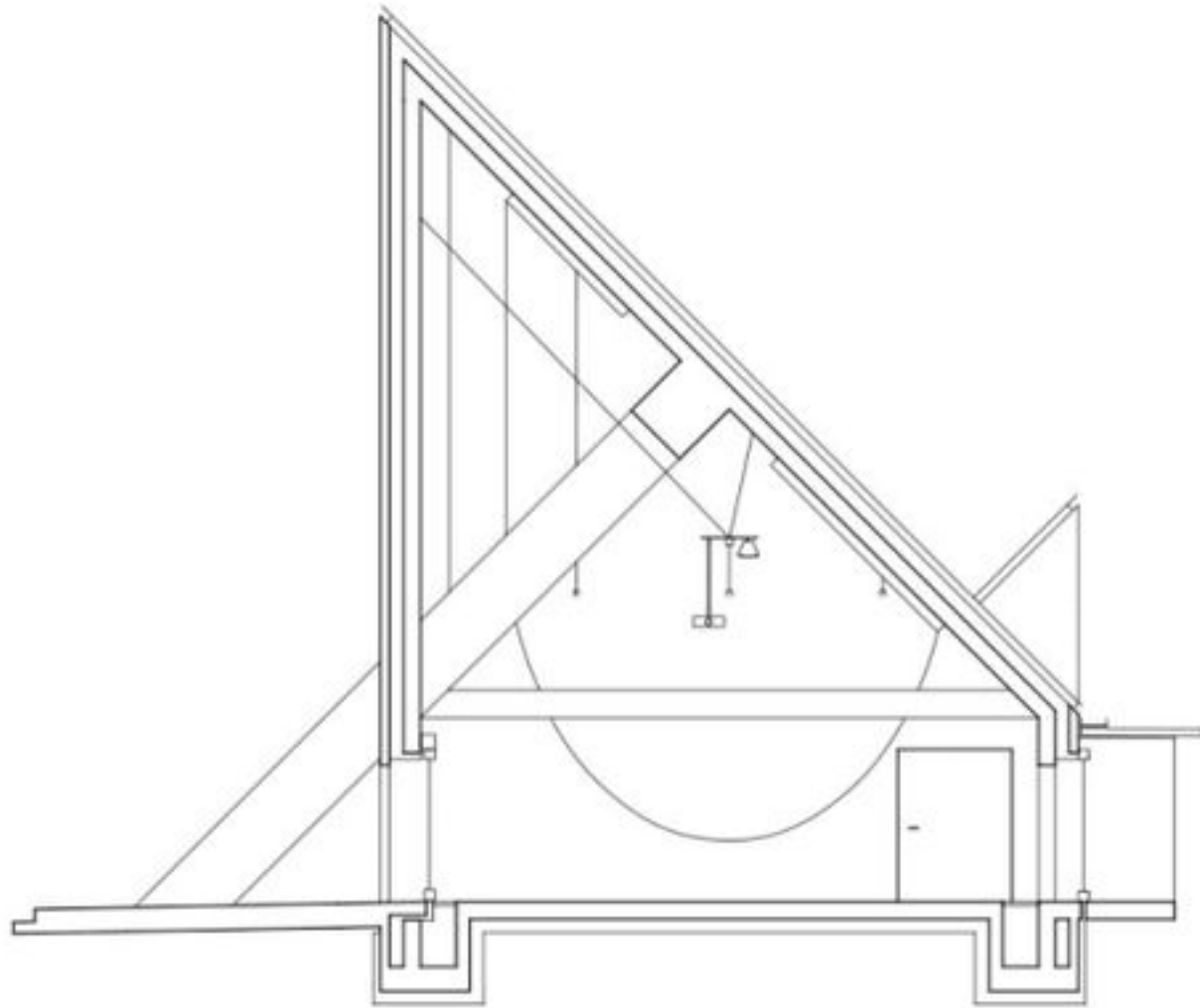
40

E 18
E 6

40

BUSS

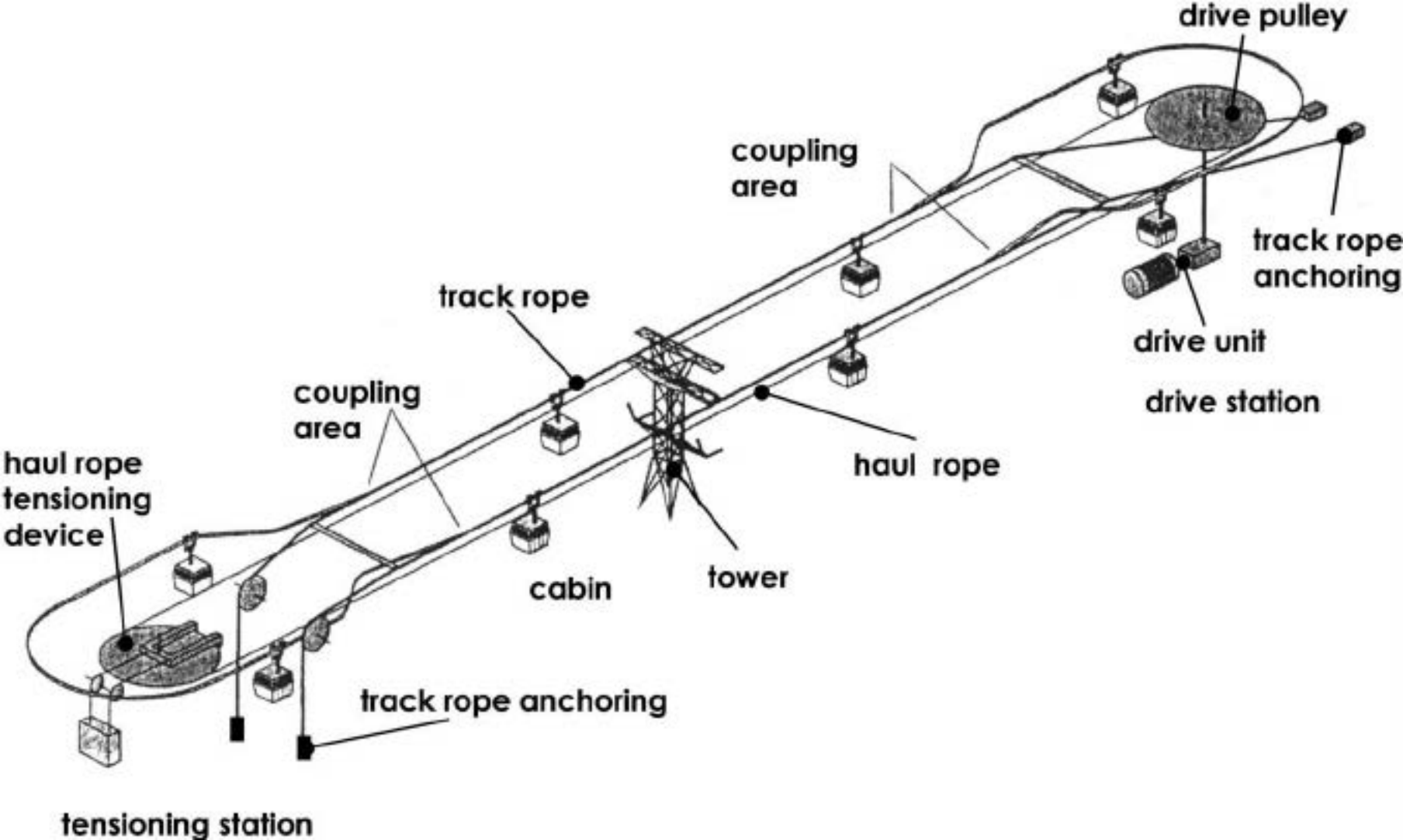






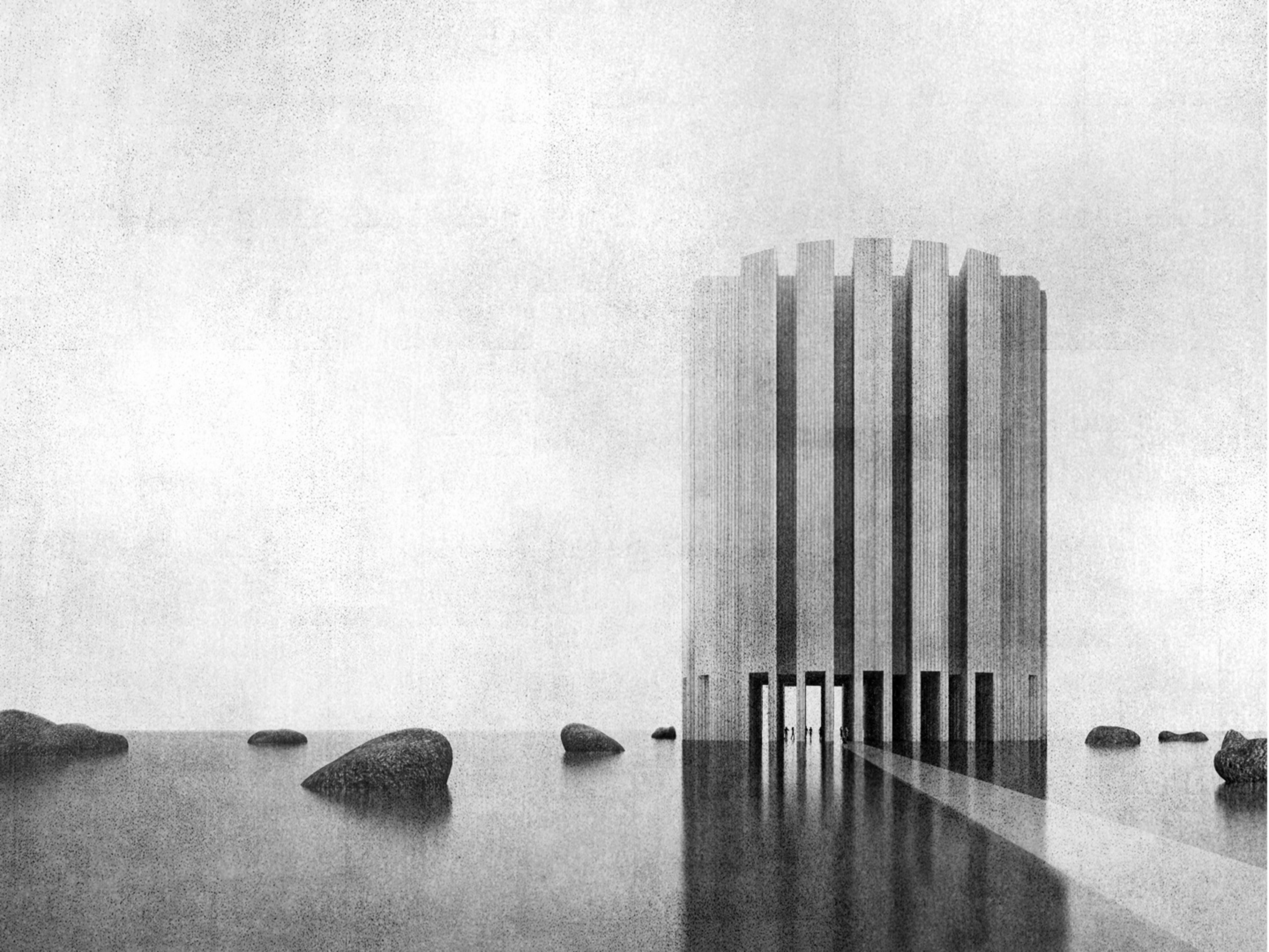


























SBC

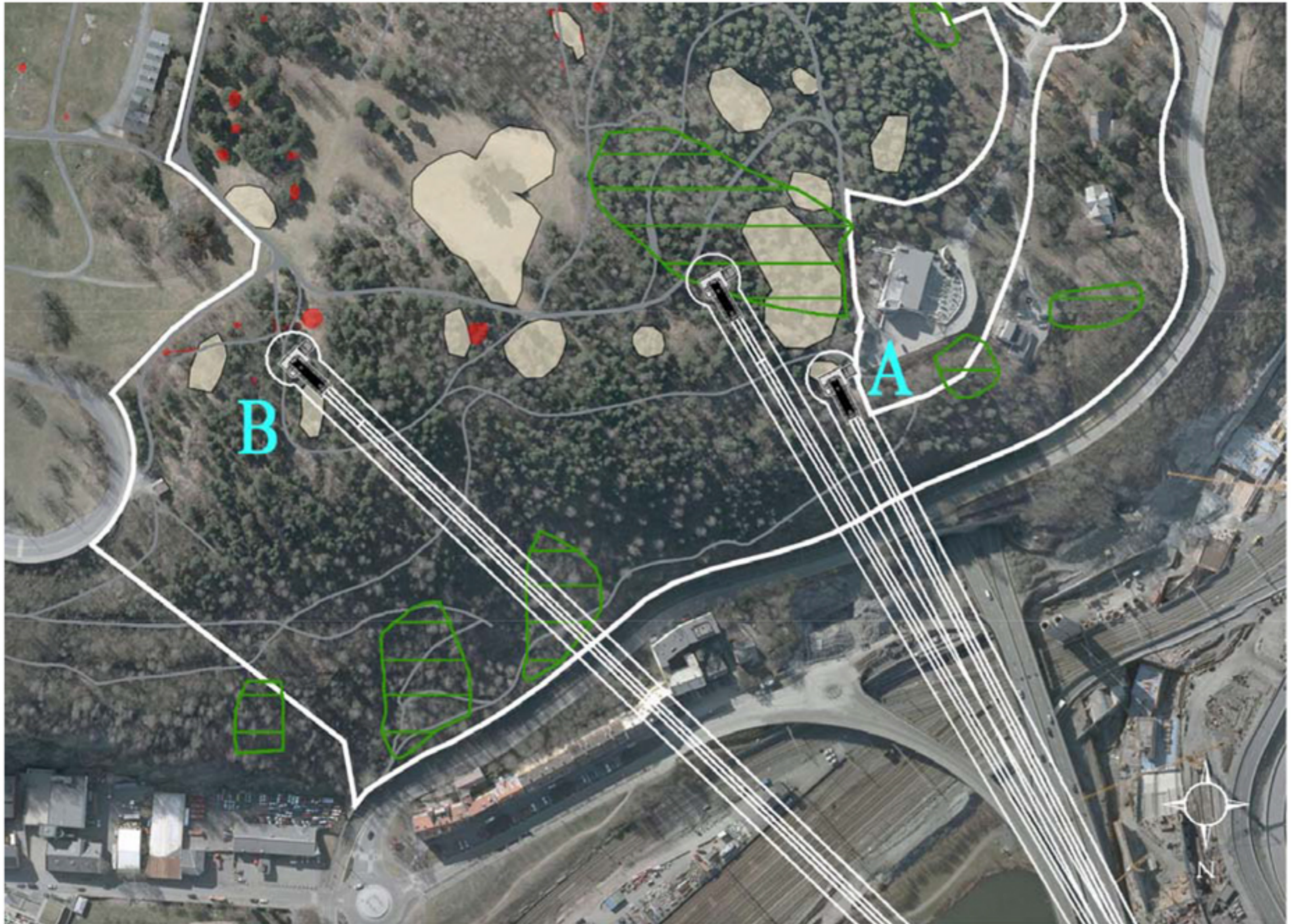
0+0





Vurdering av mulighetene for plassering av gondolbanens endepunkt utenfor regulert trasé.

Det er valgt å vurdere to alternative endepunkter for landingspunktet opp mot dagens regulering. Alternativ A: På plata foran Ekebergrestauranten. Alternativ B: På plata foran Ekebergrestauranten. Alternativ B: På øverste plata mot campingplassen.



Figur 37: Alternative plasseringer for gondolbanen. Beige felt er steinalderlokaliteter, røde felt er forhistoriske lokaliteter og grønn skravur indikerer kjernesoner for biologisk mangfold.











TELEPHERIQUE

AIGUILLE
DU MIDI

AIGUILLE DU MIDI 3000

chamonix
mont blanc



