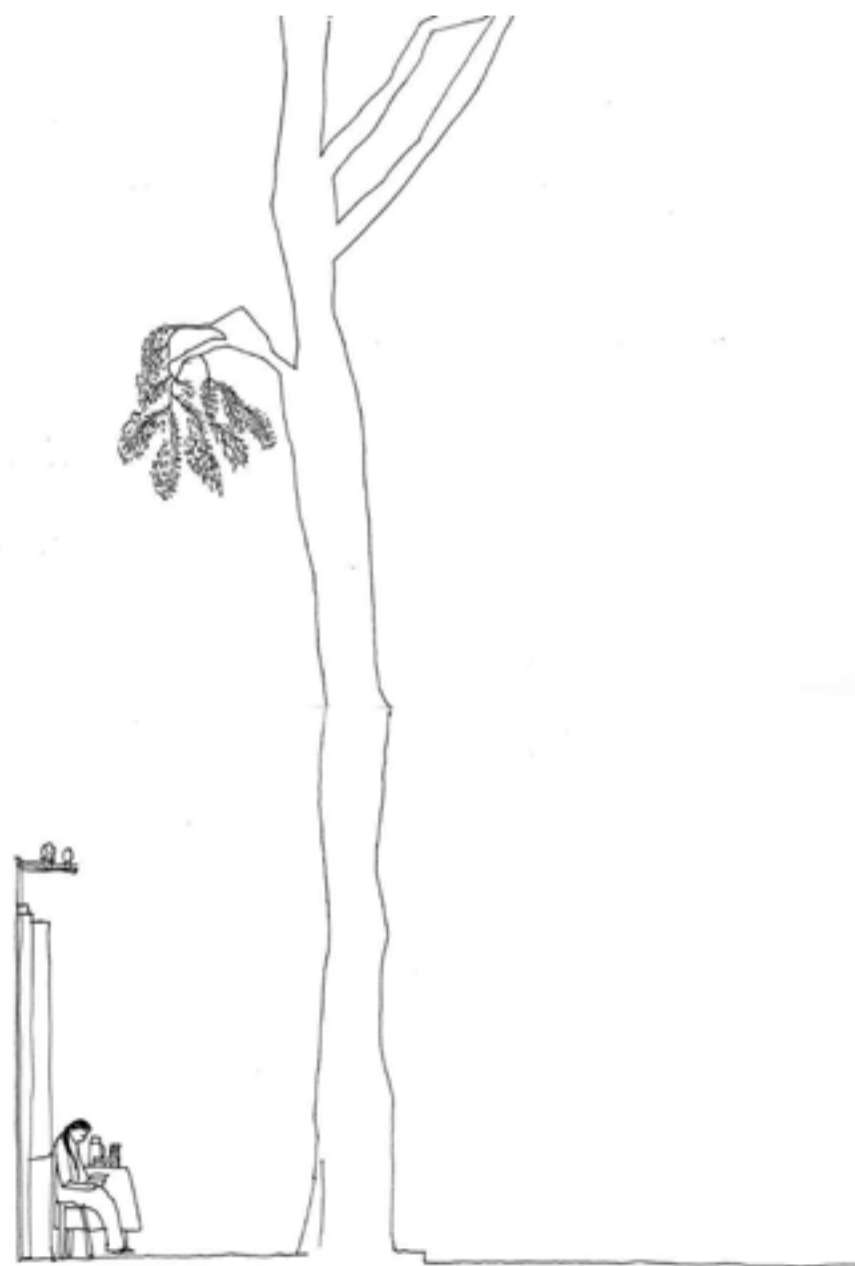
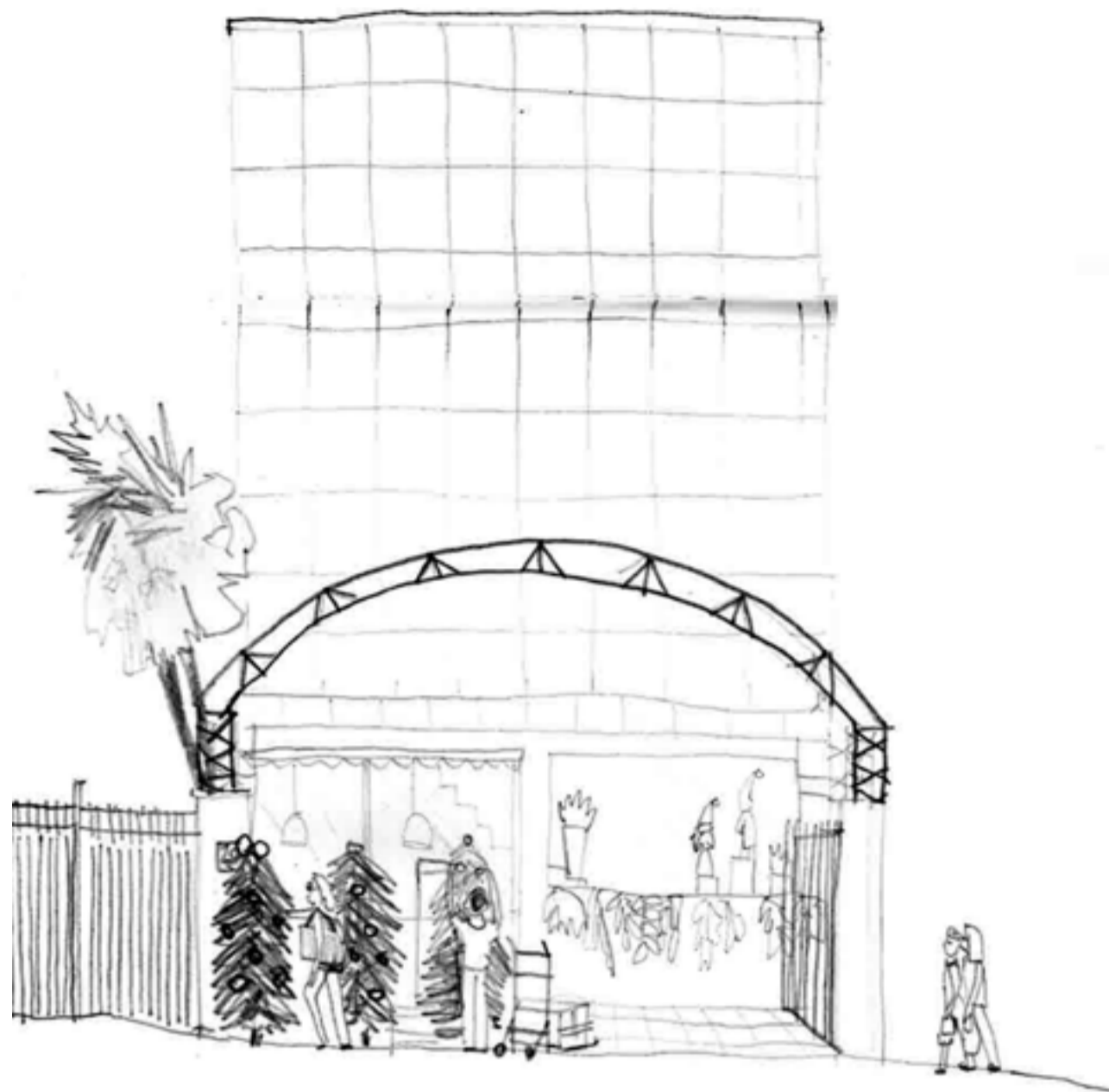


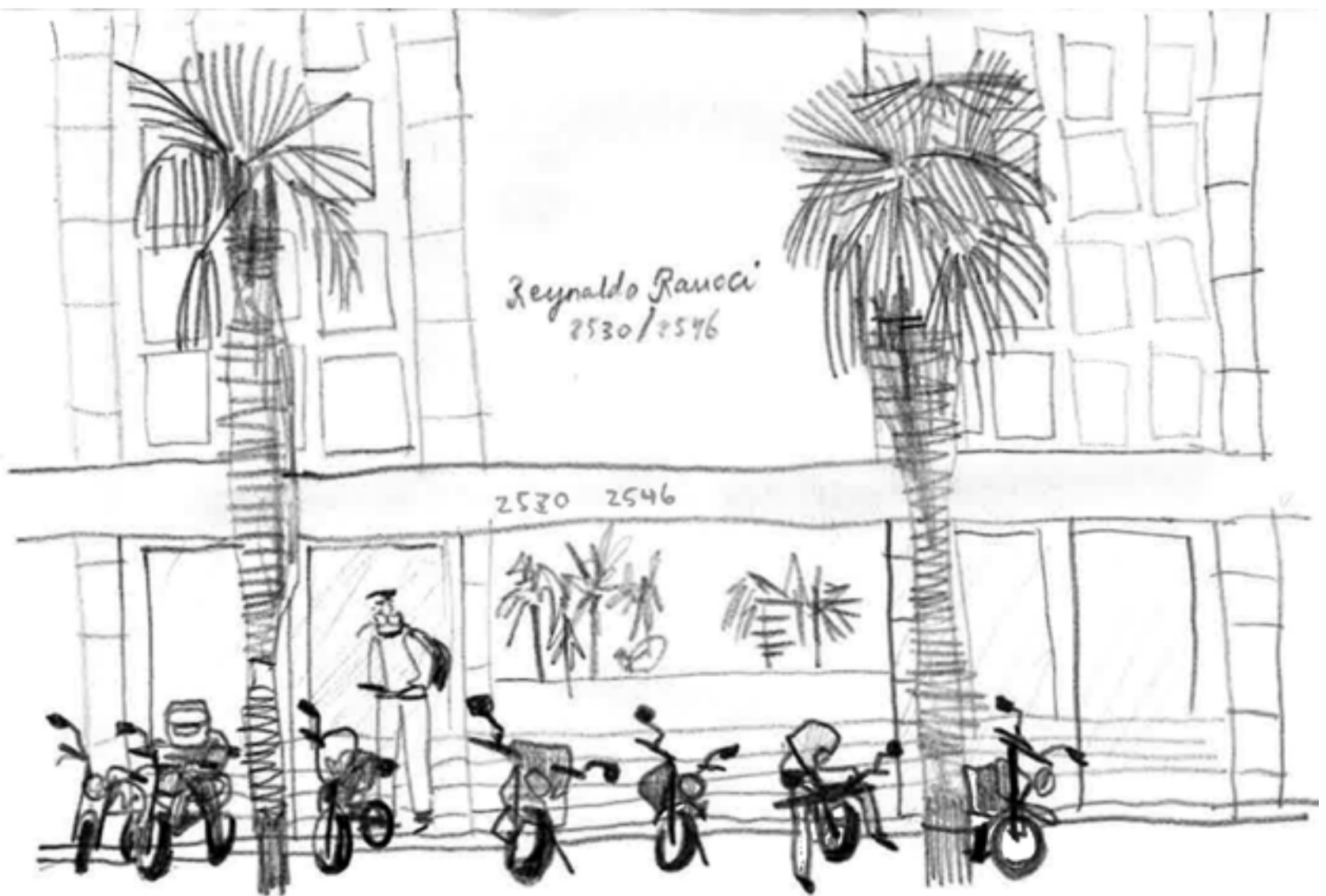
Process

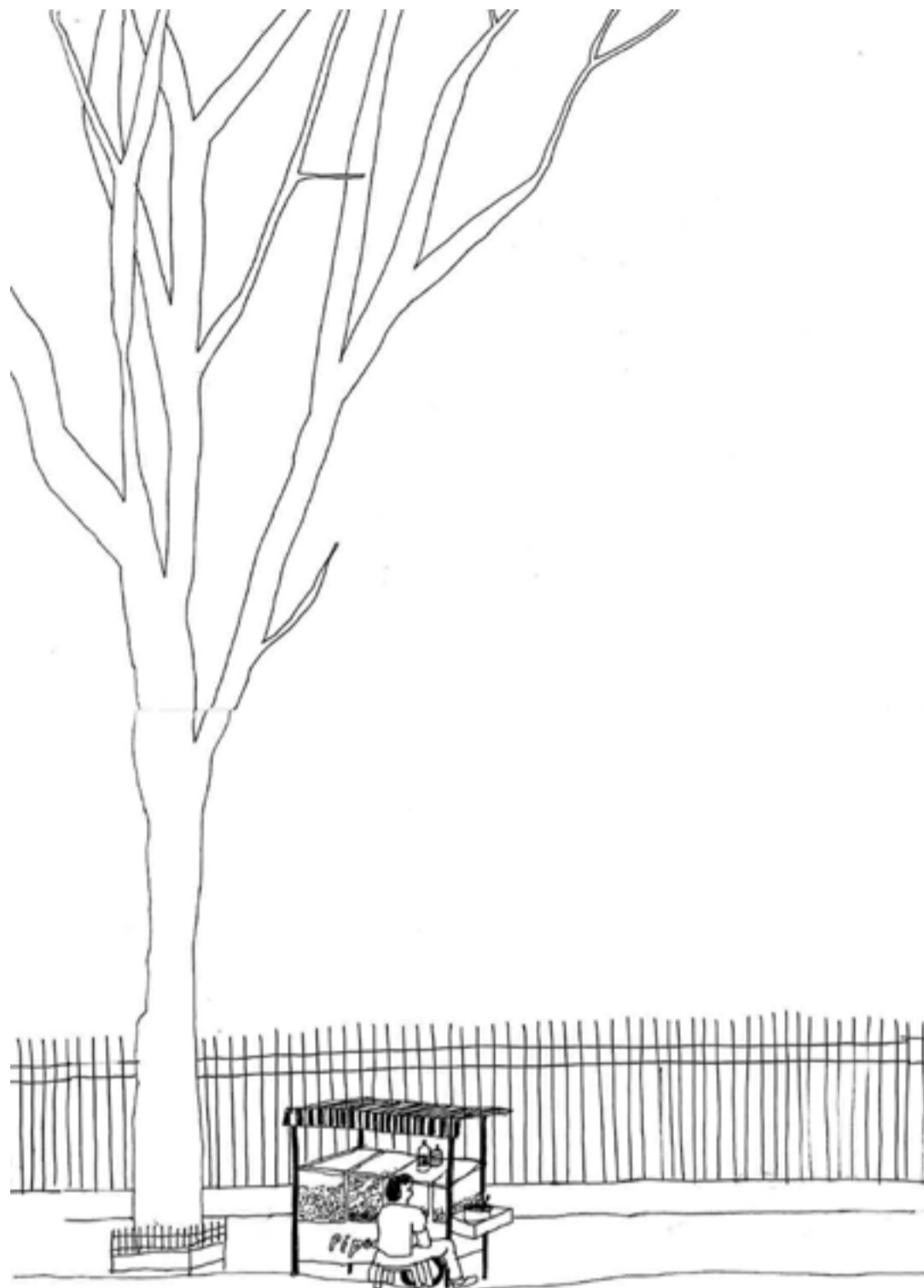
Astrid Fadnes
Wall Spaces

São Paulo,
october 2017



MIRTZ SELGER KAFFE OG APPELSINKAKE UTEFOR OSWALDO CARV COLEGIOS
FRÅ MANDAG TIL LØRDAG.

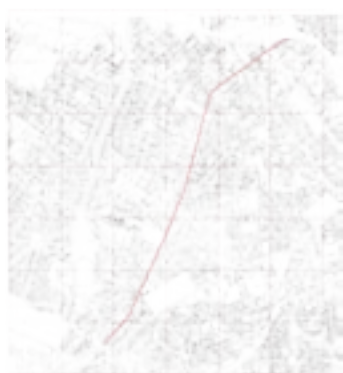




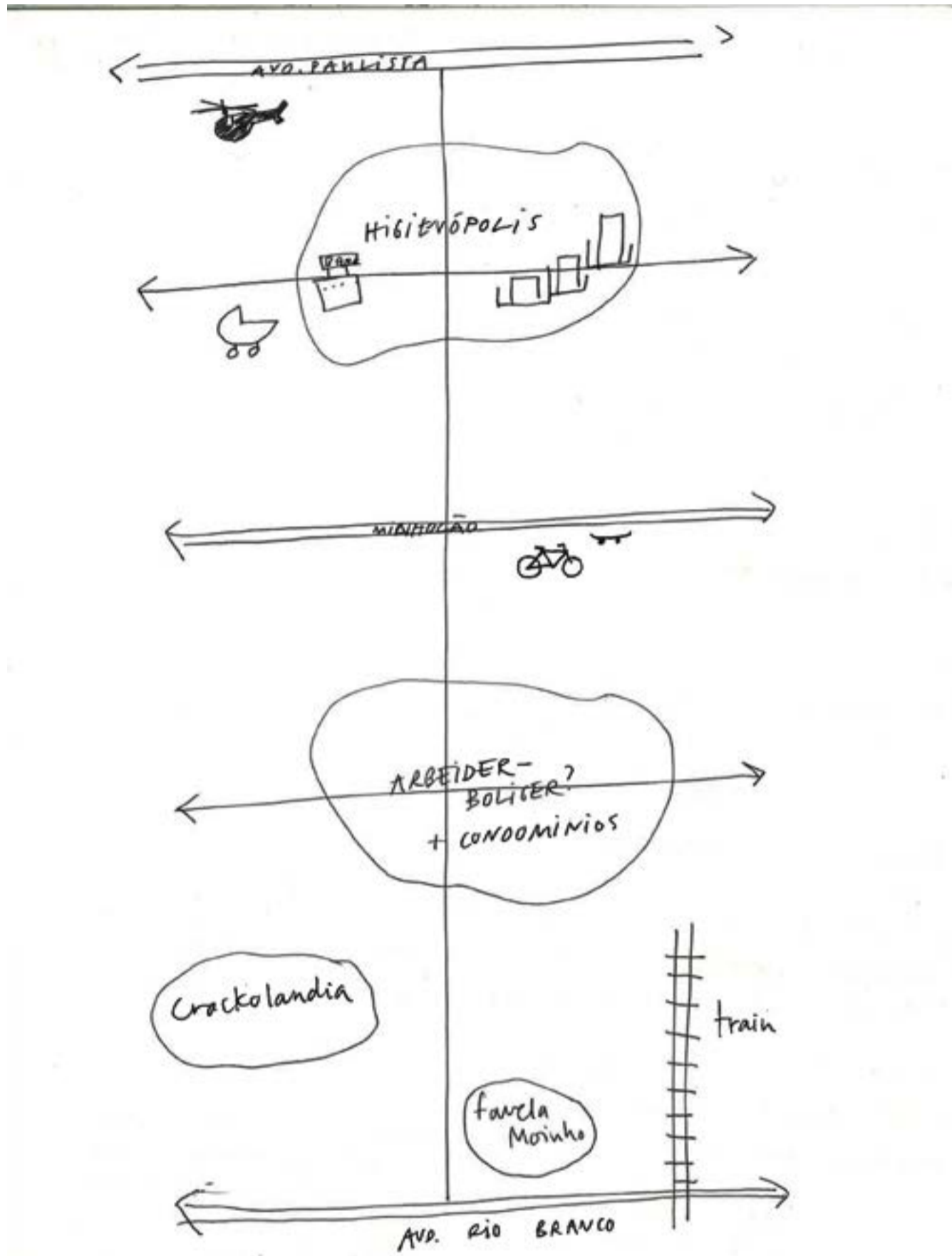
CESAR - PIPOQUEIRO - SELGER SALT OG SØTT POPCORN I AVENIDA
ANGELICA HVER UKE FRA MANDAG TIL FREDAG.



Qualitative mapping walls and fences on site, along a 3,6 kilometer long stretch intersecting the area of interest and the three neighbourhoods.



- HIGHTS AND MATERIALS
- | | |
|-----------------------------|------------------------------------|
| 1: 1,5 m - | D: glass |
| 2: 1,5 - 2 m. | E: stone |
| 3: 2-3 m. | F: tiles |
| 4: 3 m. + | G: brick |
| A: concrete | H: vegetation/bush |
| B: metal rods (transparent) | I: wood |
| C: metal surface | + : barbed wire |
| | ● : open daytime, closed nighttime |



sketches



PAPER KIOSK



PAY PHONE

"SHELTER"
homeless



LIXEIRA
TRASH

COMMUTING
BIKE
BUS
CAR
WALK



CHURRASCO
BARBEQUE

FESTA JUNINA
(happened in the
street until 1960s)
(Back!)

STREET SELLERS



WALK THE
DOG



RUNNING

POLITICAL
DEMONSTRATIONS



«UMA DAS MANEIRAS MAIS
SIMPLES DE ENTENDER O
QUE FUNCIONA E O QUE
NÃO FUNCIONA NOS ESPAÇOS
PÚBLICOS É OBSERVAR O
COMPARTAMENTO DAS PESSOAS»

SAFETY
GUARDS



SAMBA
DE RODA



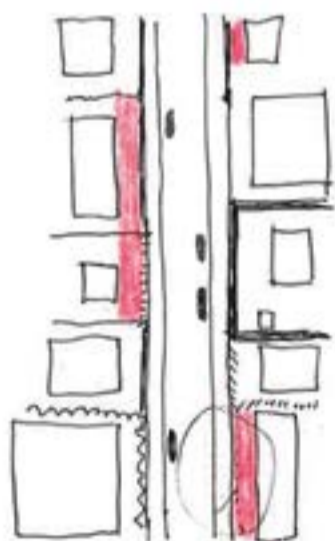
BLOCOS DE
CARNEVAL



THE WALL

Speculative project:

give all "in between" space to the public



■ "in between"
potential private → public





existing scenario



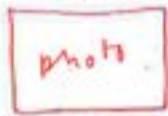
possible scenario
'worst case'



'wished' scenario



Building + ROAD SYSTEM



TERRAIN



IN BETWEEN BUILDING? THE FACADES MAKE UNDER "DEVELOPMENT"? OUT THE IN BETWEEN!



ESPAÇO PÚBLICO E URBANIDADE EM SÃO PAULO

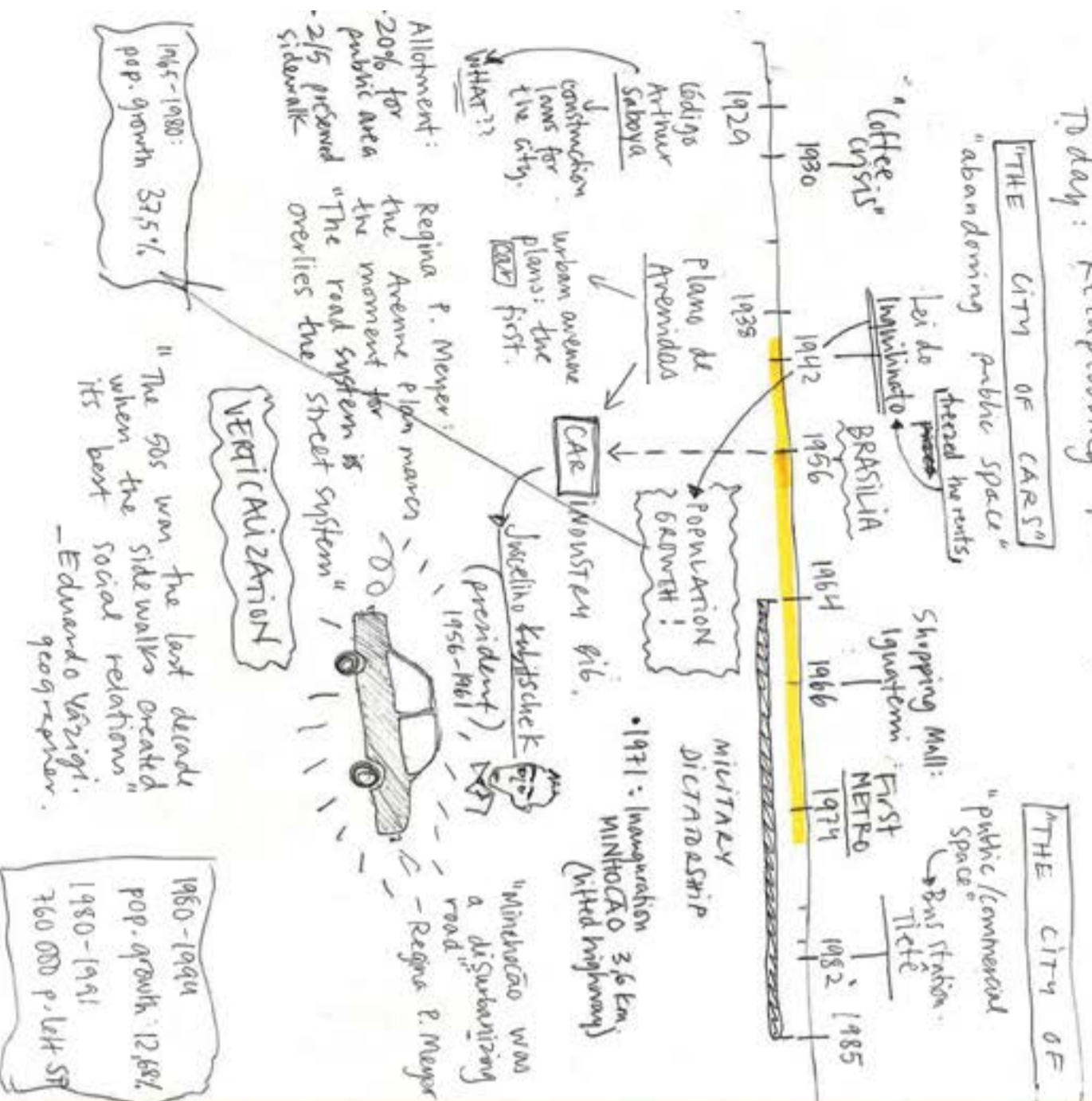
Mário Castiani

Periods of relation to public space

1930-1966: The city of cars

1966-2002: The city of walls

Today: Recapturing public space

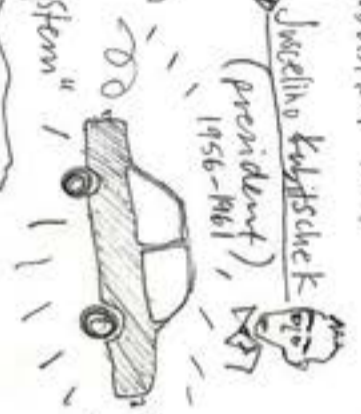


1945-1980: pop. growth 375%

"The 50s was the last decade when the sidewalks created its best social relations."
- Eduardo Vazirgi, geografer

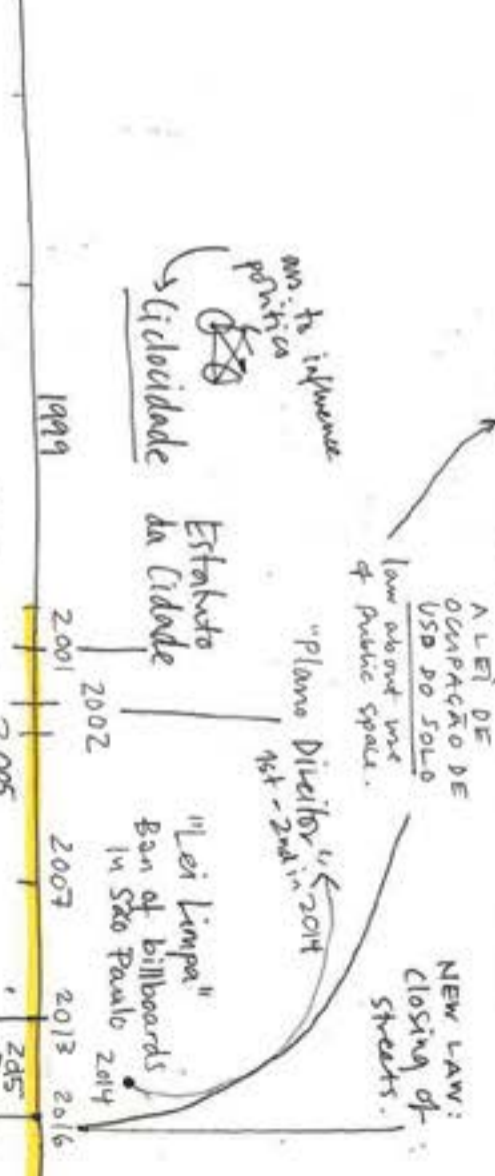
1960-1994 pop. growth 1268%
1980-1991 760 000 p. left SF

VERTICALIZATION



"PASSEIO LIVRE"
Law: Lei das Calçadas 14.675/08
"sidewalk law"

"RECAPTURING PUBLIC SPACE"



TERTIARY SECTOR GROWTH!

"business city"
new offices
new jobs
wilder class growth

VIOLENT CRIME INCREASE

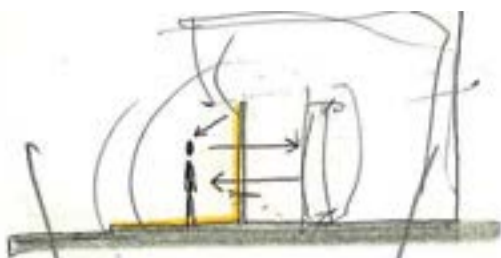


increase in consumption of goods.
"walling" of spaces
shopping build.
shopping centers

INCREASE OF INEQUALITY (P255 Calderon)
1981-1991 GINI increase 0,516 → 0,586

increase in land value → People more to inform and settlement (because of infrastr. improvement)
FAVORABLE INCREASE

"The public space of the city turned into a speaking testimony of the absence of a comprehensive urbanistic thought."
- Regina Meyer

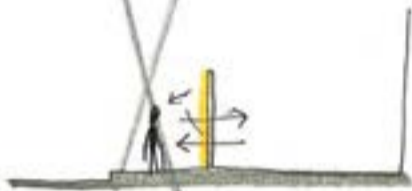


- "optimal" situation:
- 1 the wall communicates something.
 - 2 contact through the wall (both ways)
 - 3 sidewalk/ground and wall creates a space (?)



LET'S NOT
 - what does this mean?
 - some "connection" between ground + wall?
 - creates a specific place, landmark/habitat step?

- 1 the wall communicates something
 3 Sidewalk/Ground creates a space



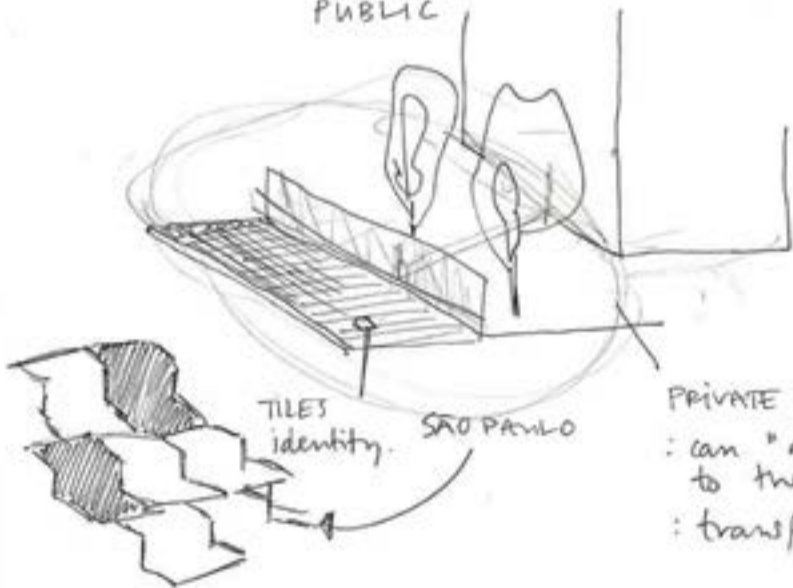
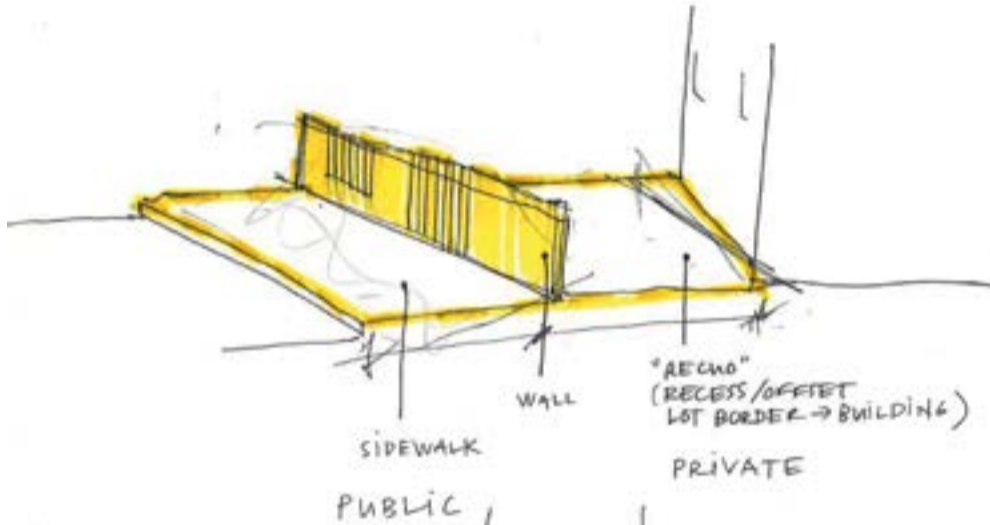
- 1 the wall communicates something
 2 contact through the wall



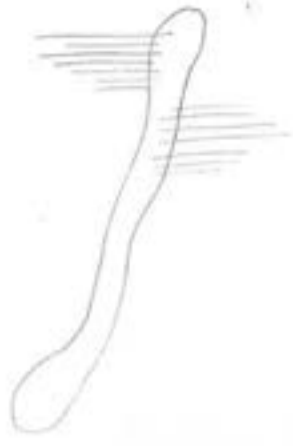
- 1 the wall comm. something



no communication/connection.

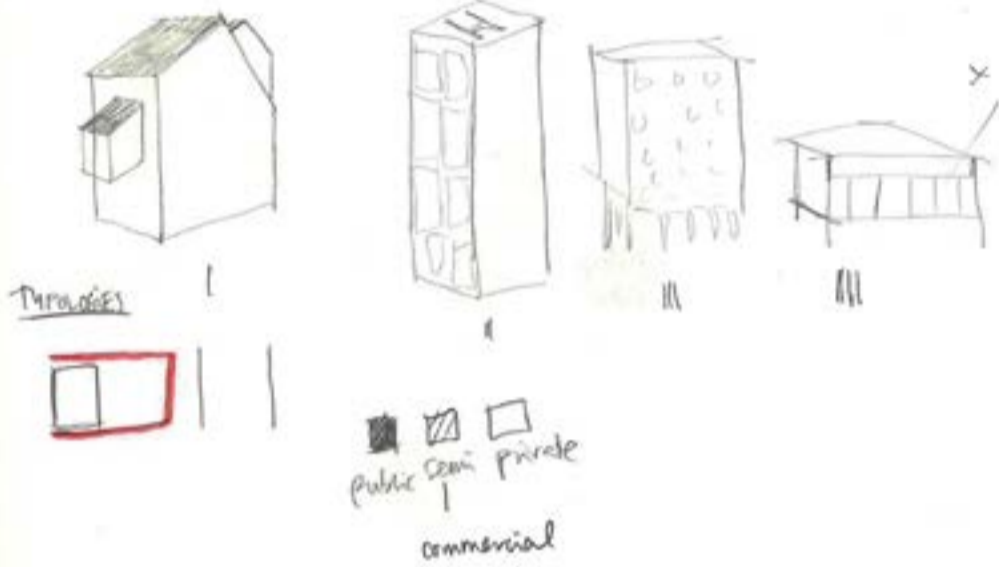


Avenida Angelica: prev Pua Itafiai
PROGRAM



- (A Baig) colors
- + office
 - o Villas
 - △ comm. service
 - ▽ other (health, educ.)
 - public
 - health
 - bank
- 1 office
2 comm service
3 public
4 housing
5 other? educ.
6 other

• Nollikant: plan + snitt

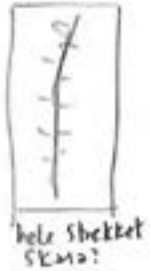


- panorama m. jobs?
- program
- vedge sites

STRATEGIES

- Claiming the parking lots
- Corners as meeting places
- Re-open gardens (pitais)
- Lift the pedestrian
 - roof tops
 - offices
 - helicopter p

PRINTIE



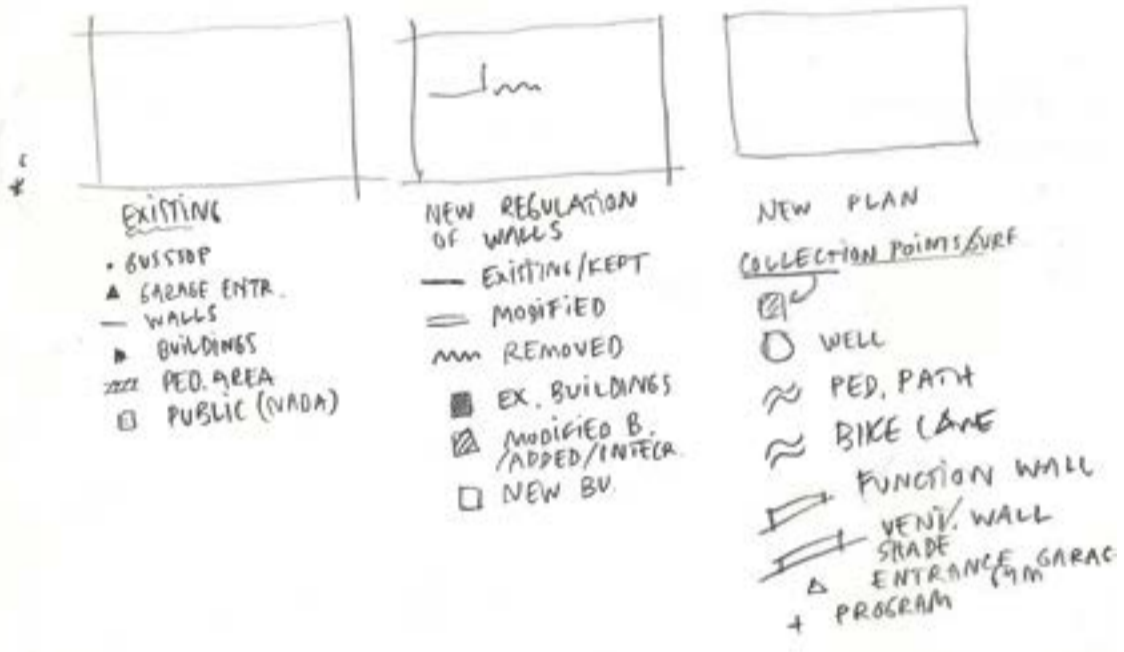
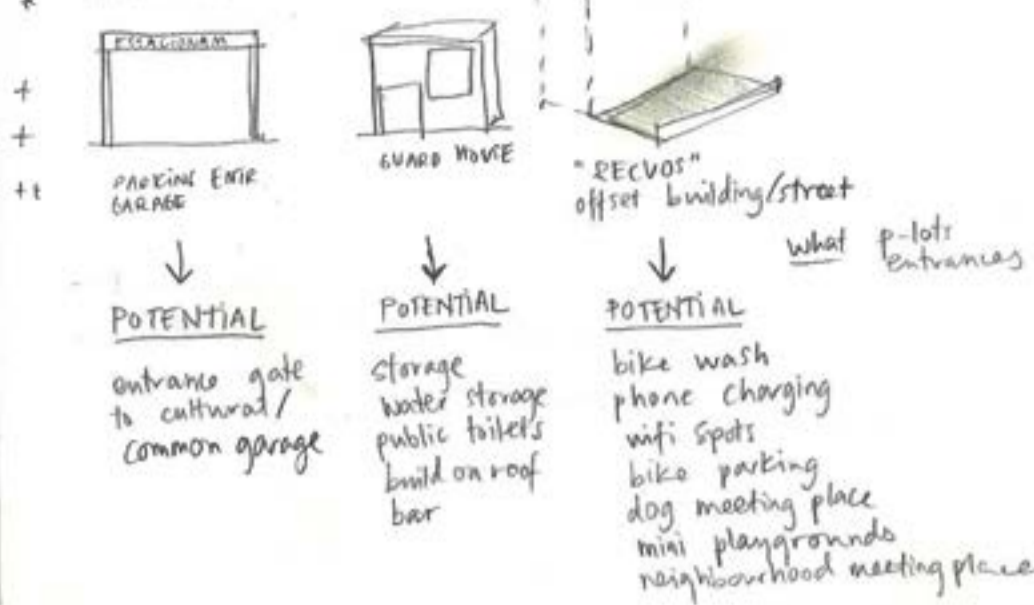
SON: Water map?

New Public Spaces: space off efficiency/mobility (commuting)
space informal sale/shopping/exchange (street seller, temporary markets etc)
space for meeting — big scale
space for shelter — small scale
play

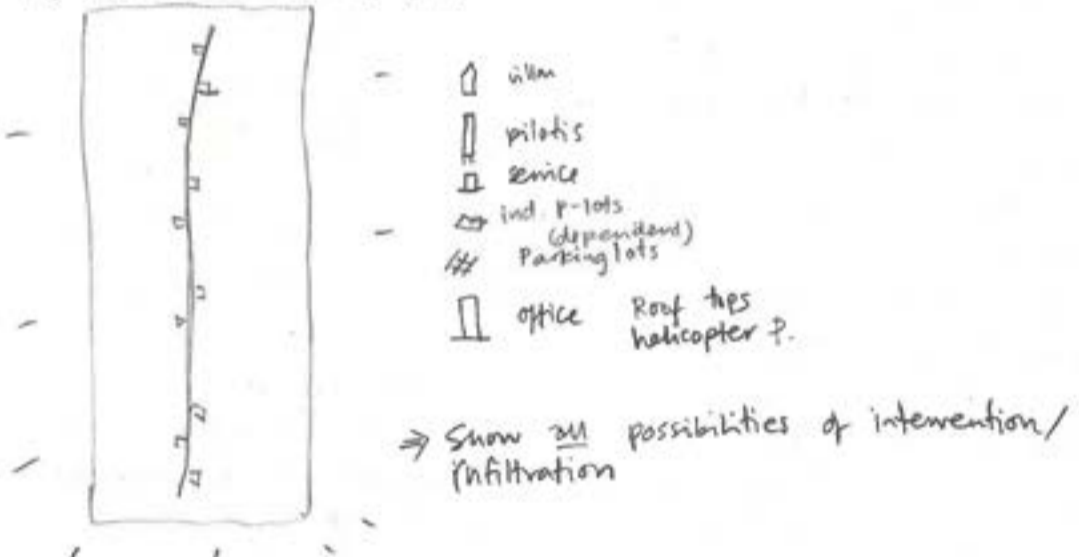
CLAIMING SPACE

- TILES!
- CLAIM THE PARKING LOTS
 - CLAIM THE CORNERS
 - RE-CLAIM THE GARDENS
 - CLAIM THE UPPER FLOOR THE VIEW
 - CLAIM GROUND FLOOR

SMALL SCALE TYPOLOGIES



THE PEDESTRIAN POCKET MAP

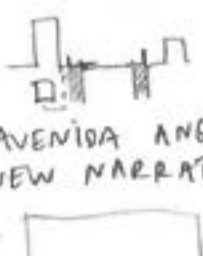


AVENIDA ANGELICA: NARRATIVE (EXISTING)
THE CAR CITY
PRIVATE PROPERTY

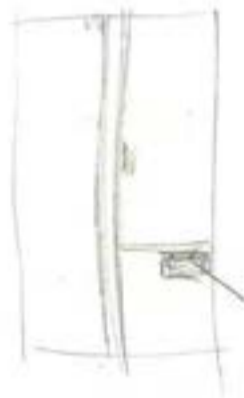
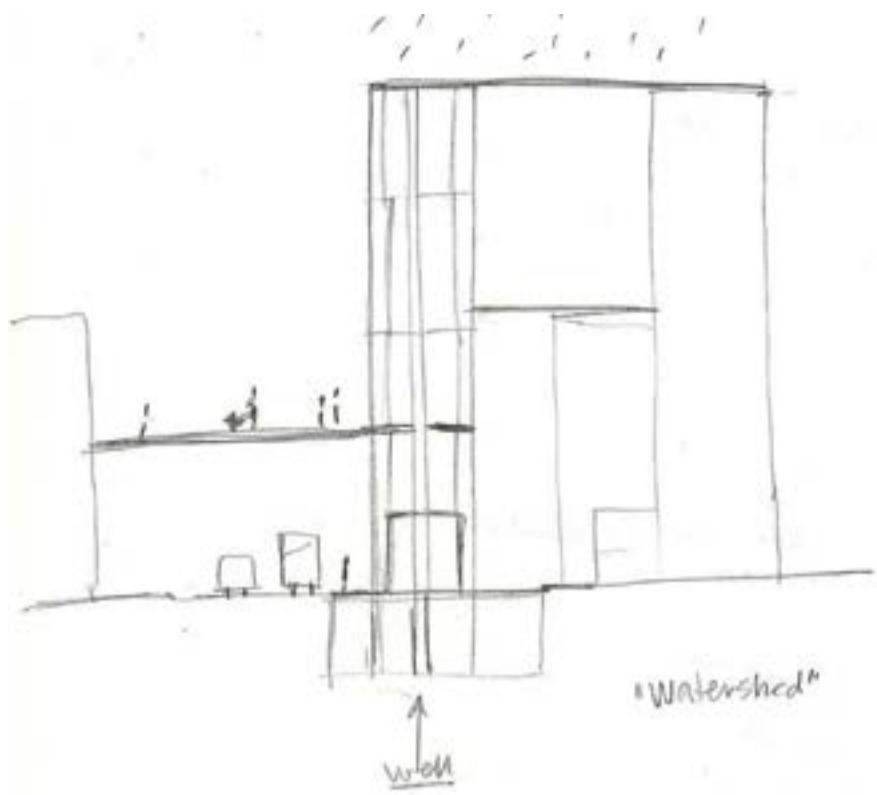


- Plano das Avenidas
- Modern ideals for planning: car
- avenue. Car. Traffic.
- Trees
- the road: divides the quarters
- the lots decides the fence
- Building follows car
- Fence follow lot

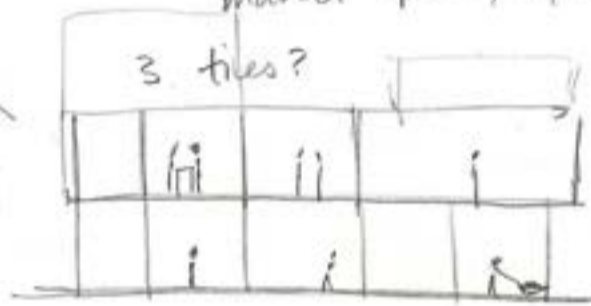
AVENIDA ANGELICA: THE PEDESTRIAN CITY
NEW NARRATIVE - PUBLIC SPACE
with a proper logic.



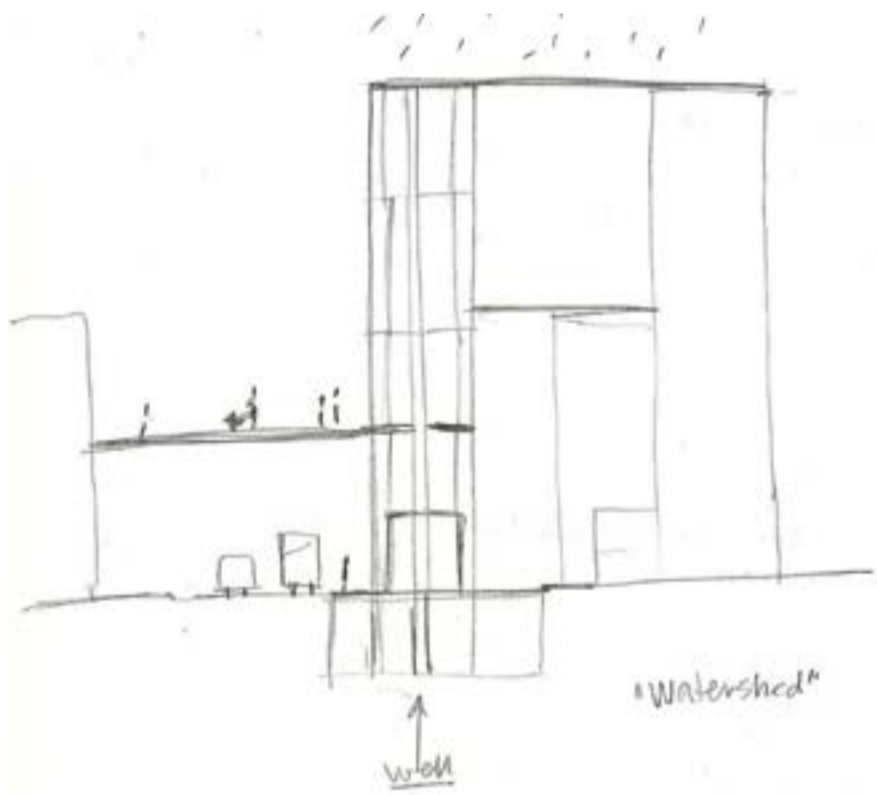
Smith-plan: use "skis" mellom veg/hmm.



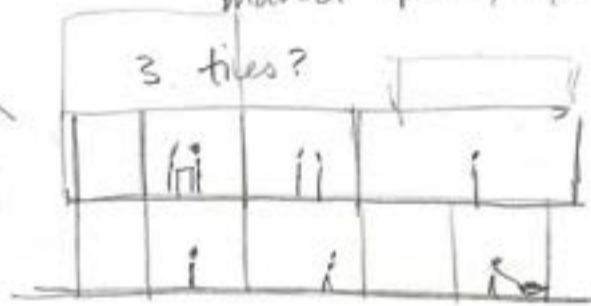
1. Water tower
2. parking: passage and temporary market space, gallery?



Market space
closed/open



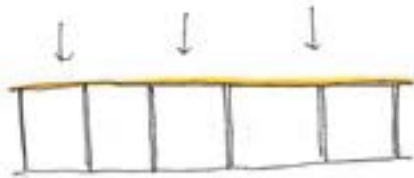
1. Water tower
2. parking: passage and temporary market space, gallery?



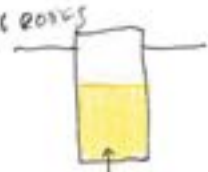
Market space
closed/open

COLLECT

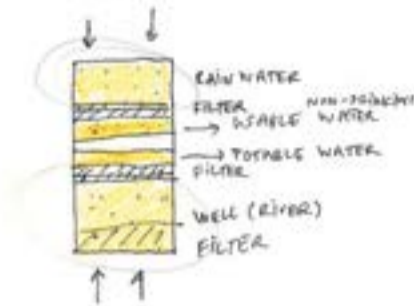
- * WATER INFRASTR.
- + STORE
- + USE
- + EXISTING ROOFS



THE CANOPY



THE WELL



USE



CONNECT

* MOBILITY



PEDESTRIAN PATHWAYS (TILES)
BIKE LANES



FUNCTION WALL
VENTILATION WALL (SHADE)



RAMPS
STAIRS

ACTIVATE
SOCIAL INFRASTR.

RAINWATER



- SHOWER
- BIKE/CAR WASH
- DISHES
- WATERING
- TOILET
- CLEANING
- LAUNDRY

POTABLE

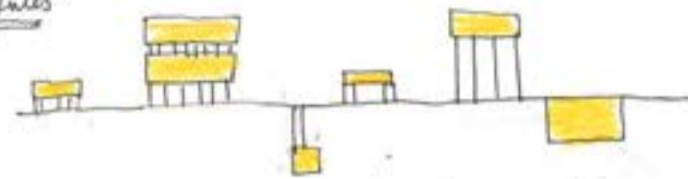


- WATER TAP
- KITCHEN (CONSUME)

- SPORTS
- CULTURAL
- SHELTER
- COMMERCIAL
- CINEMA
- THEATRE/PERFORMANCE
- LIBRARY
- NORMAL (CAMELOS)

Based on existing use of street

"rules"



all added programs above or under ground
Ground floor extended + using existing structures, buildings.

STORE



FOR USE EMERGENCY

MAPPING: fatta

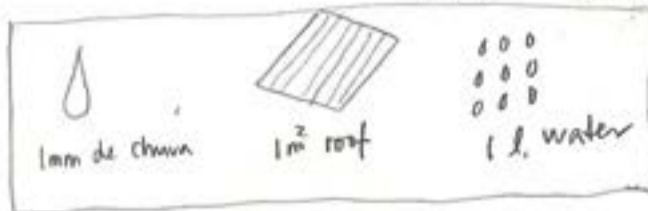
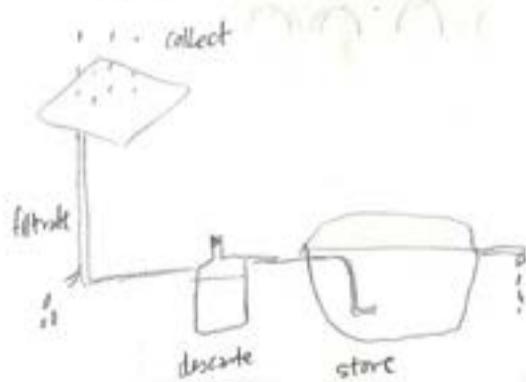
- sitios/barrs tombados
- use of rainwater

Use of rainwater

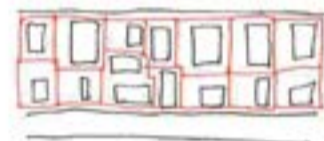


potable

- drink



EXISTING LOT SYSTEM

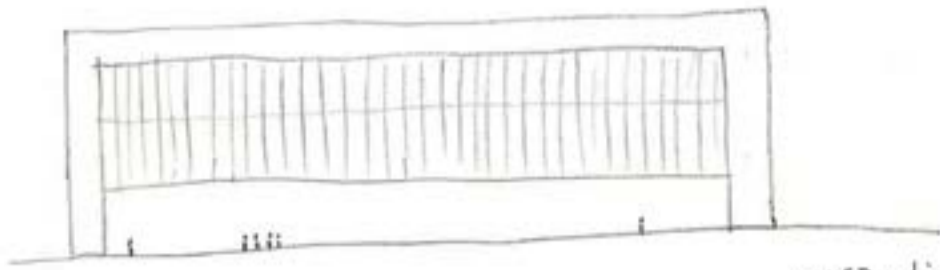


HOLE MAP
O Pedestrian space

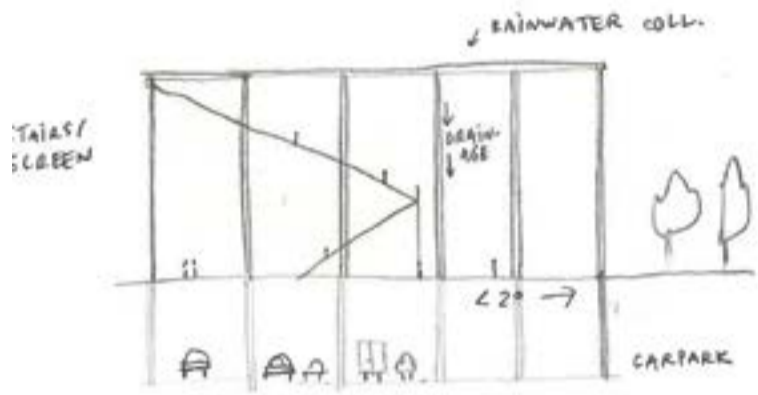


Potential public space

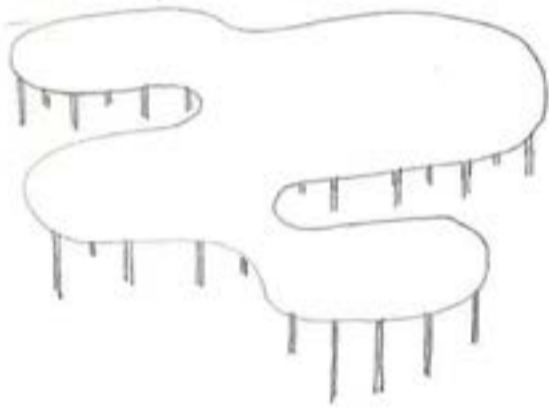




MASP, Lina Bo Bardi



THEATERPLEIN, Bernardo Secchi Paola Vigano



OKAYAMA UNI CAFE Sanna

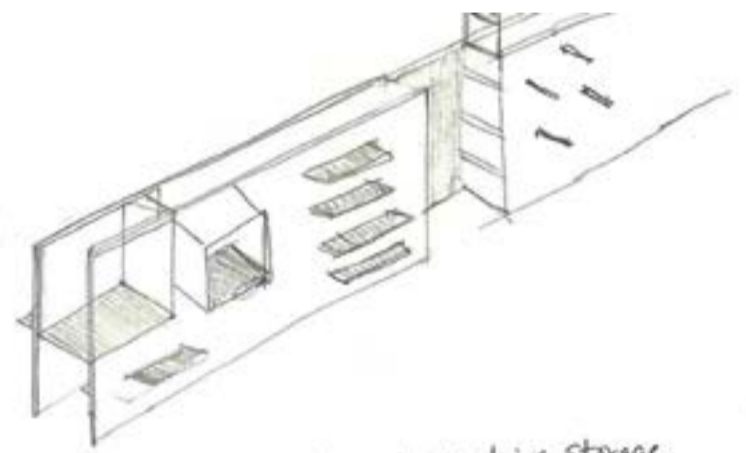


EXISTING SYSTEM

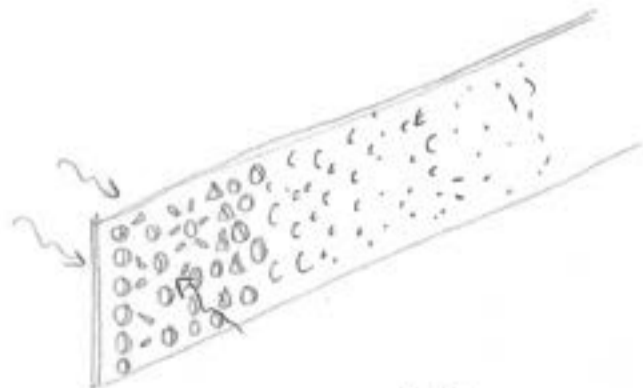


I Typologies: Strategy level possible intervention/integration wall-water-system

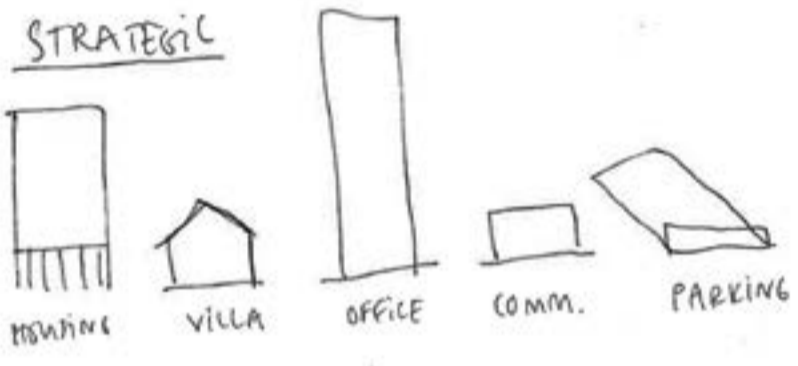
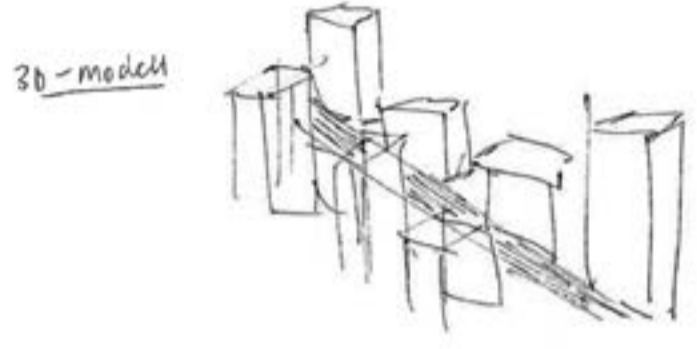
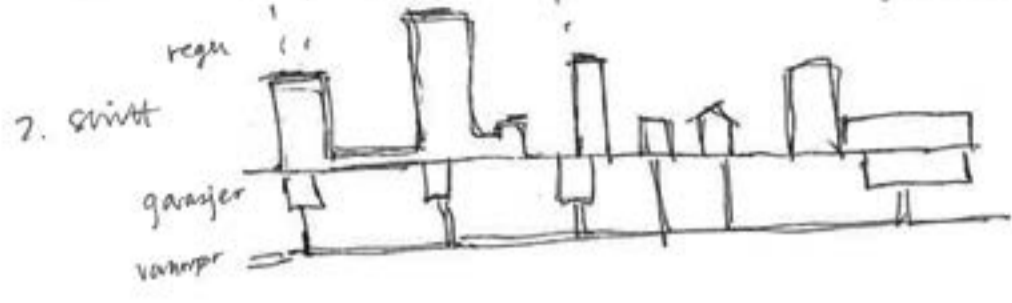
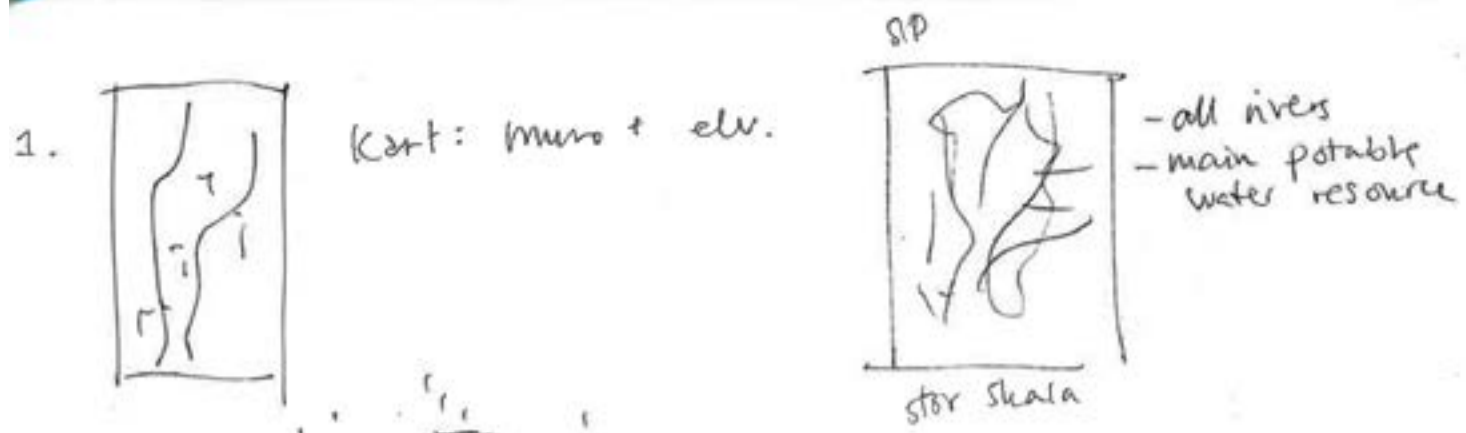
II "pilot area" w. all typologies



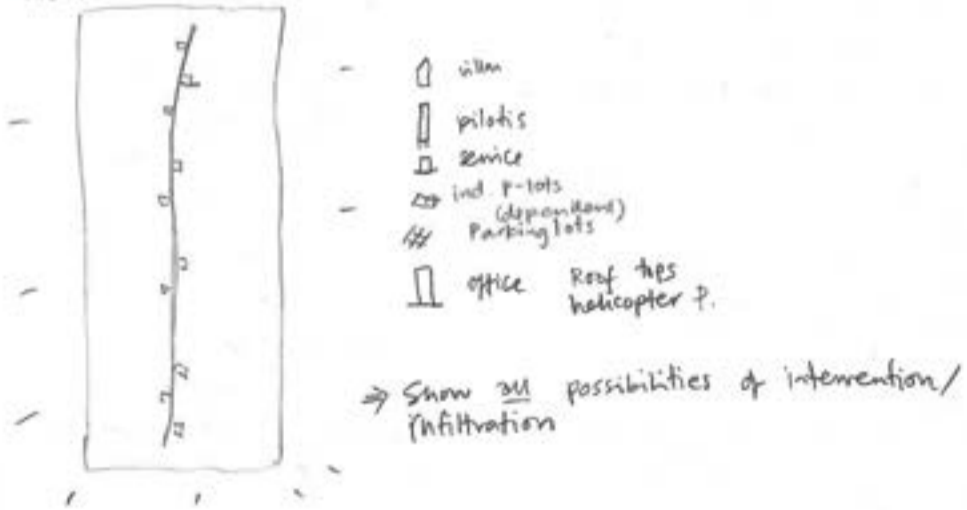
FUNCTION WALL: tables, chairs, stairs, storage, bike parks, locks etc



VENTILATION WALL (COBAGO)



THE PEDESTRIAN POCKET MAP

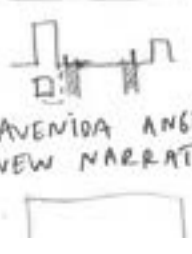


AVENIDA ANGELICA: NARRATIVE (EXISTING)
THE CAR CITY
PRIVATE PROPERTY

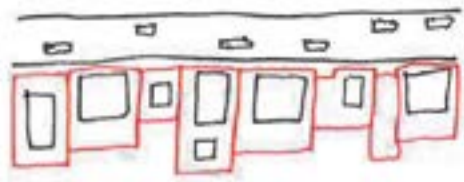


- Plano das Avenidas
- Modern ideals for planning: car
- avenue. Car. Traffic.
- Trees
- the road: divides the quarters
- the lots decides the fence
- Fence - building follows car
- Fence follow lot

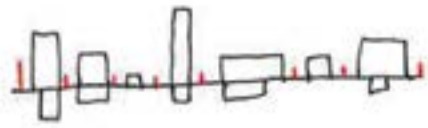
AVENIDA ANGELICA: THE PEDESTRIAN CITY
NEW NARRATIVE - PUBLIC SPACE
with a proper logic.



skiss-plan: use "skis" mellom veg/knm.



EXISTING LOT SYSTEM



□ PEDESTRIAN SPACE



TIENDOMSSTRUKTUR SÄO PAULO

Regulation plan (zonamento) : 1st 1934.
 → zoning plan + building regulations
 → disctipin of use and occ. of

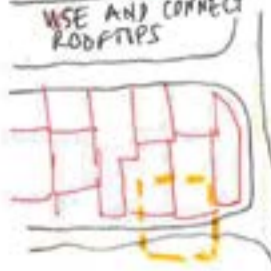
Replaced in 1970 by "Plano Diretor"
 + zones
 + studies of density (pop).
 dimensions
 occupation rate
 degree of utilization



CROSS ROAD CONN.



USE AND CONNECT ROOFTOPS



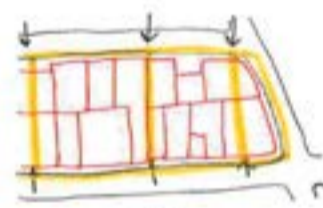
USE AND CONNECT UNDERGROUND AREA



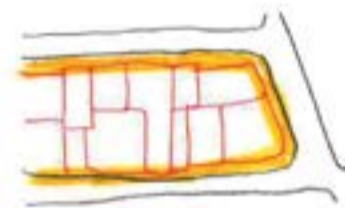
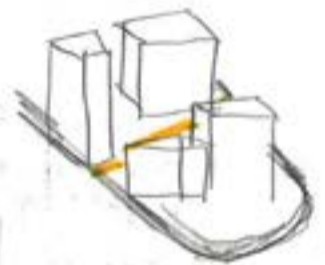
PRINCIPSKÜSER



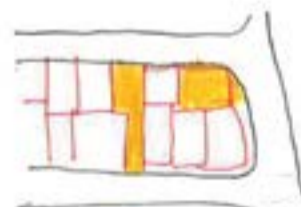
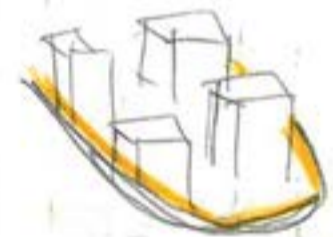
sikkerhet



MAKE CORRIDORS



ADD OFFSET AREA



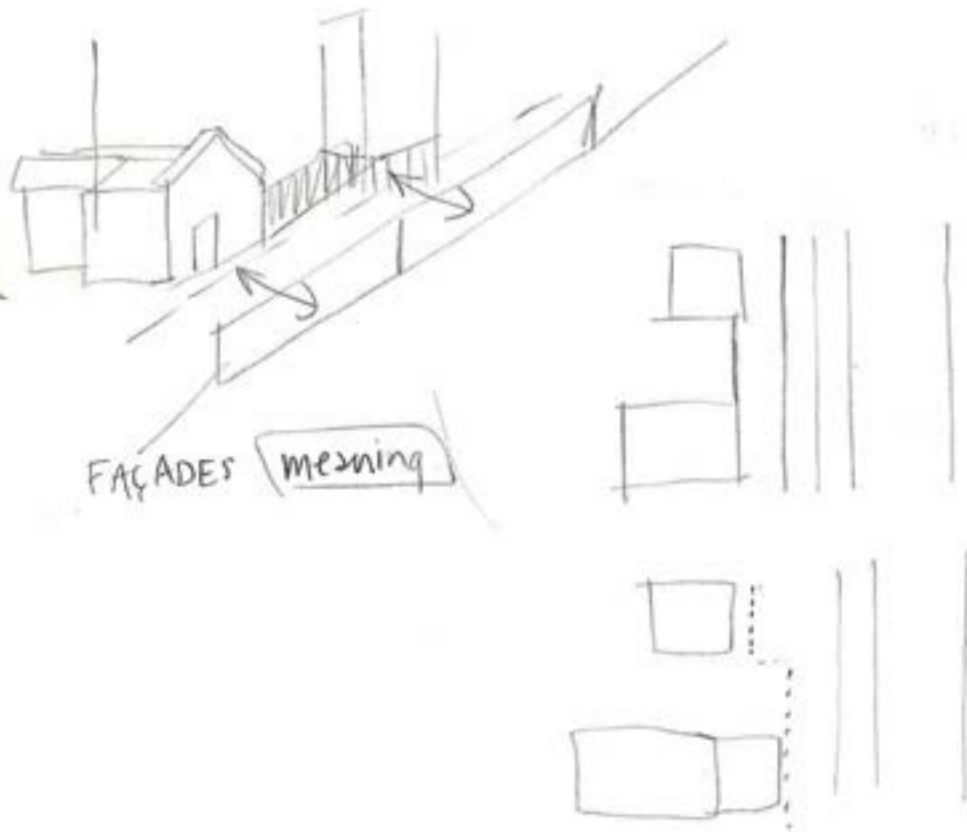
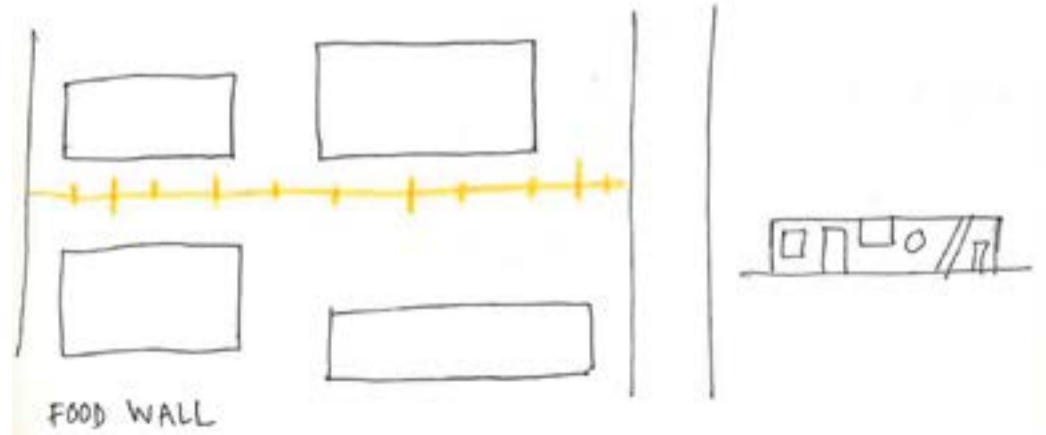
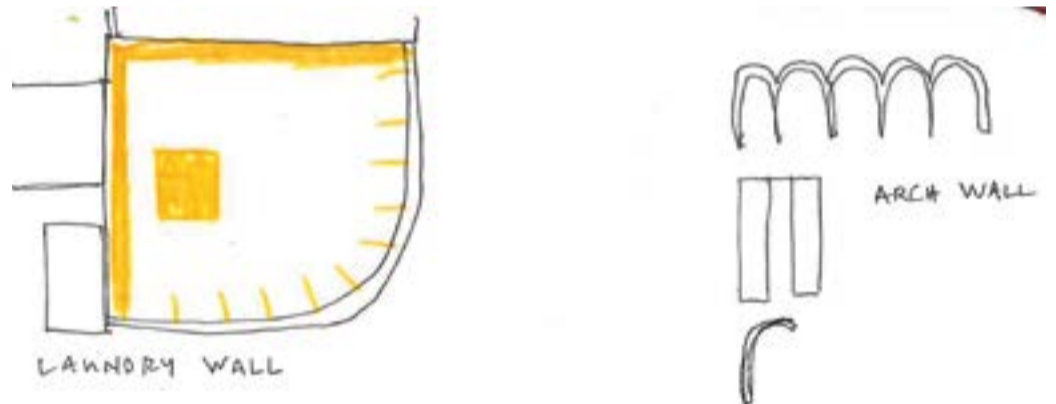
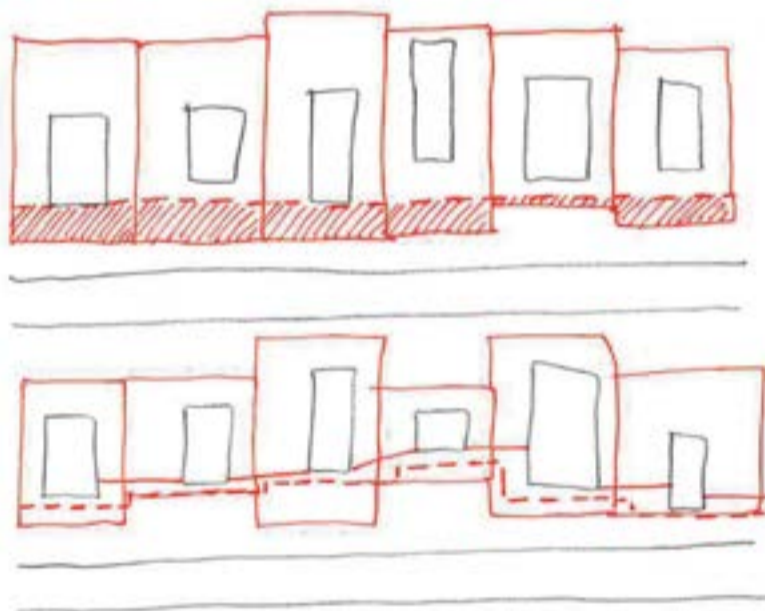
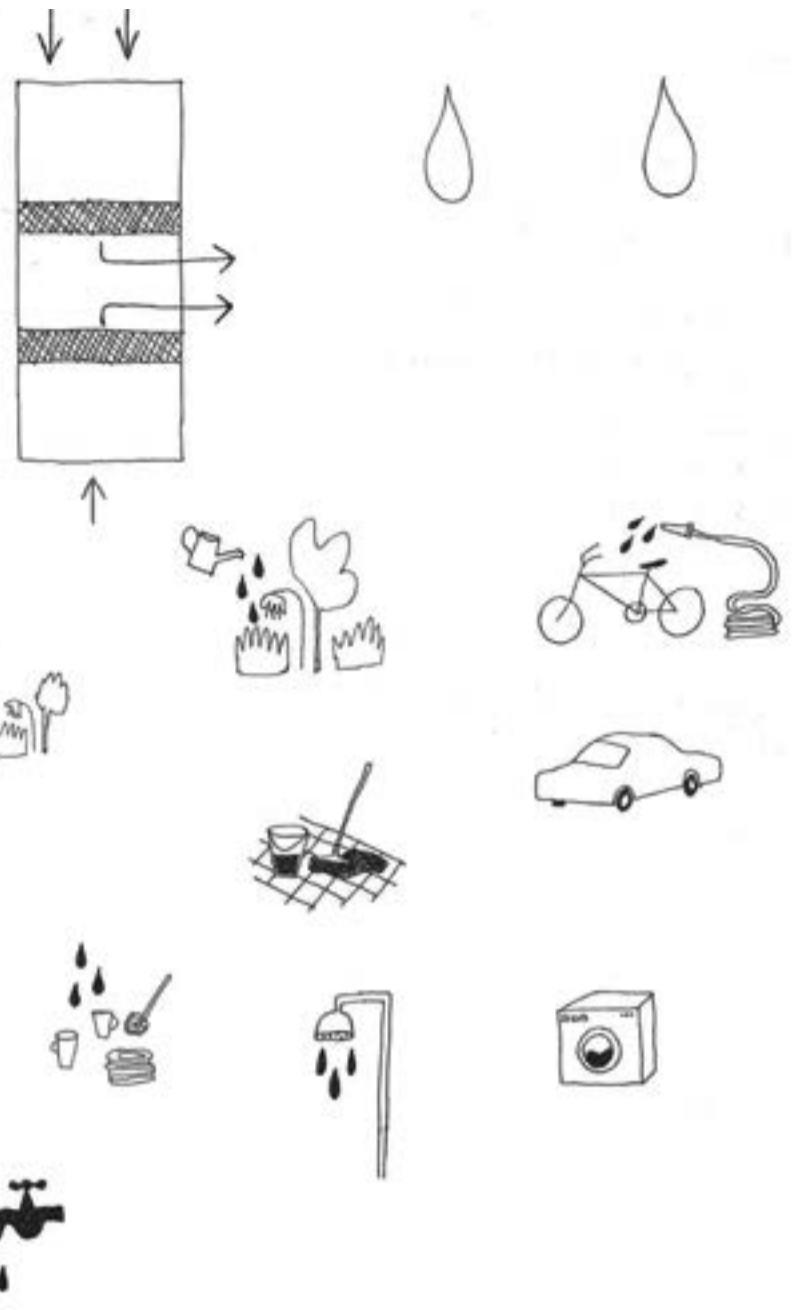
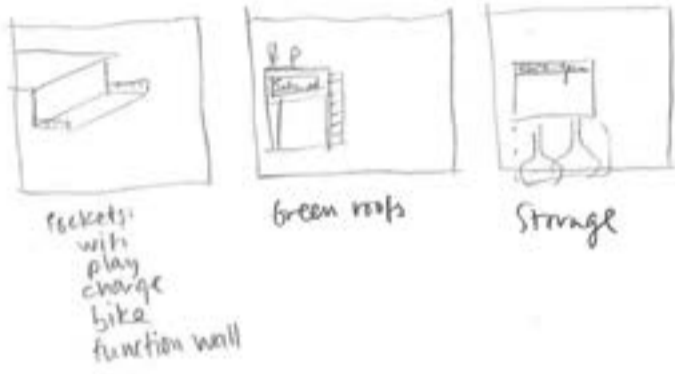
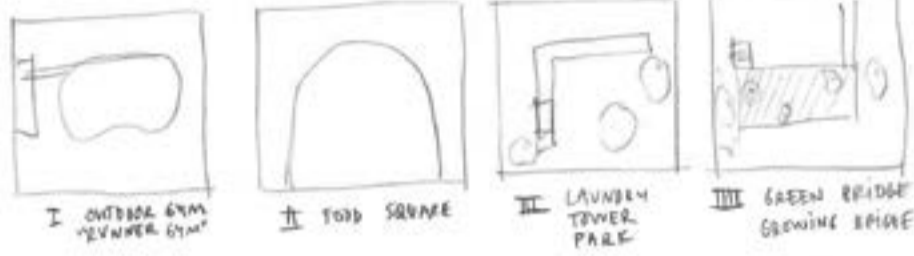
USE OPEN LOTS OR EXPROR. FOR PUBLIC USE

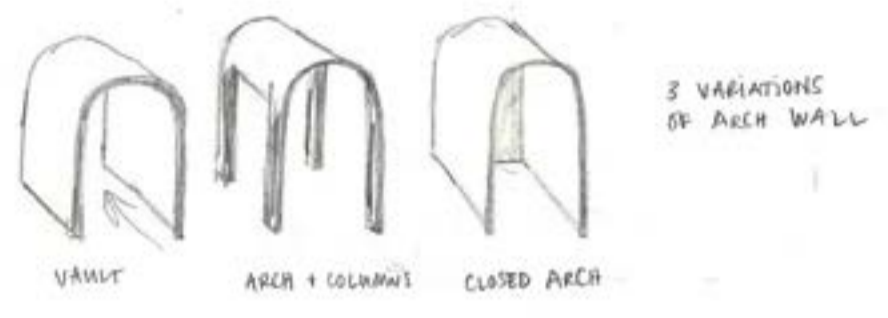
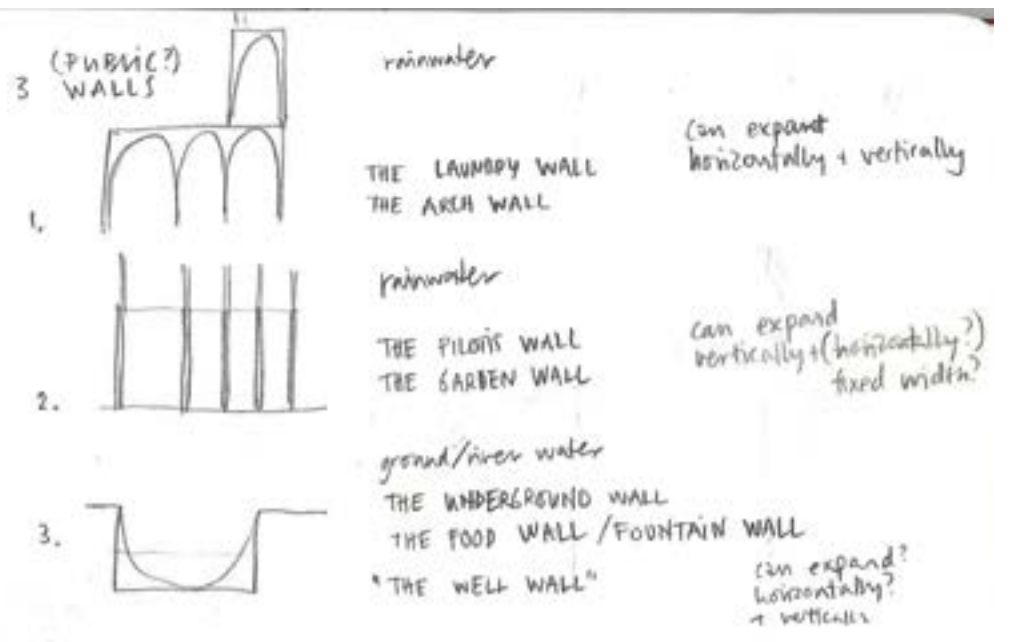
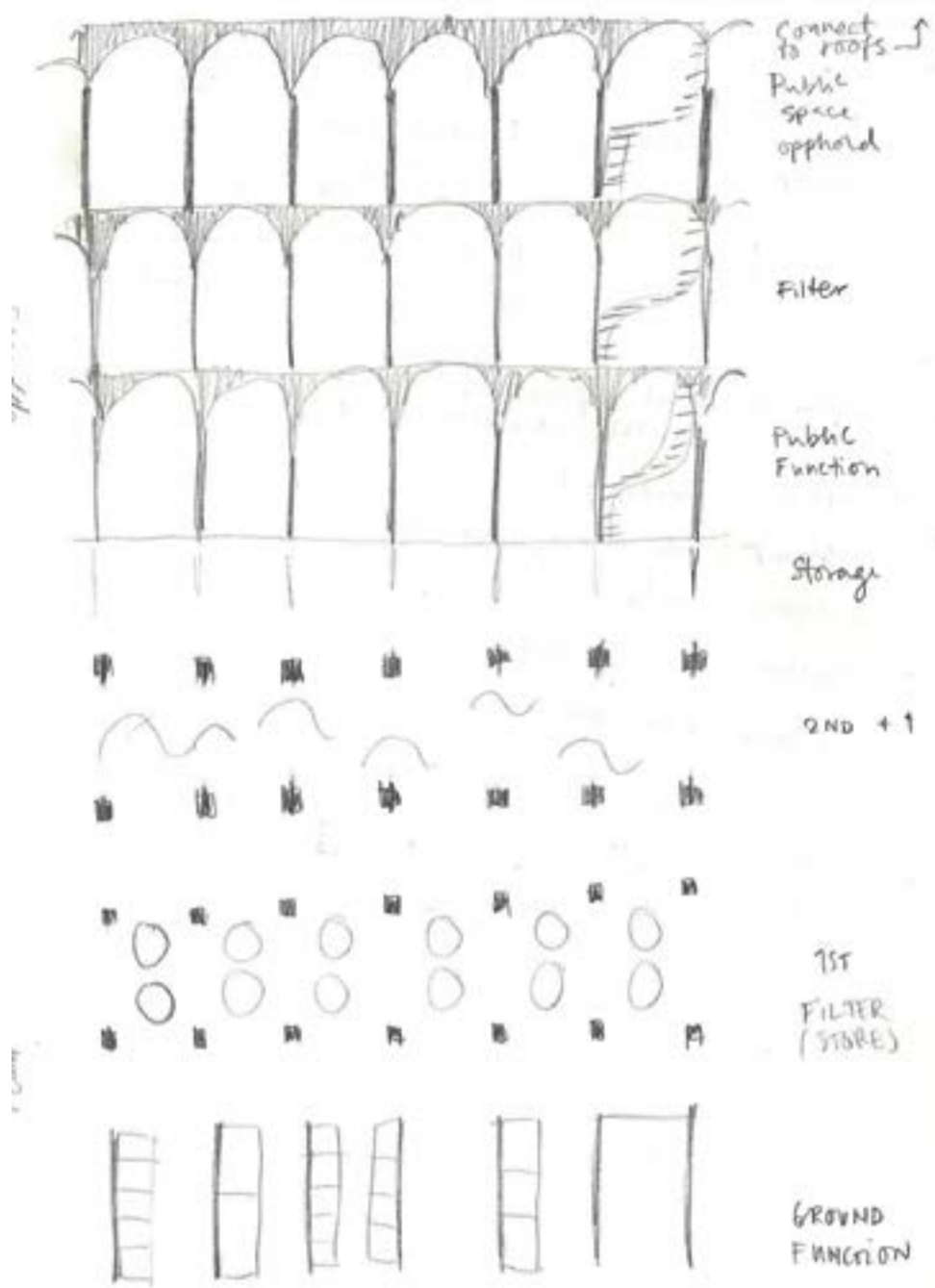


4 MAIN PROJECTS

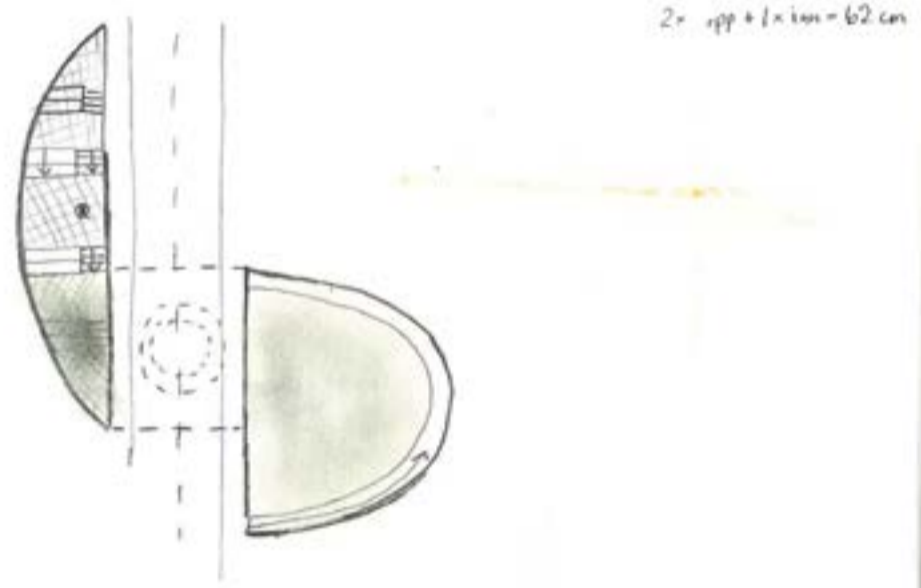
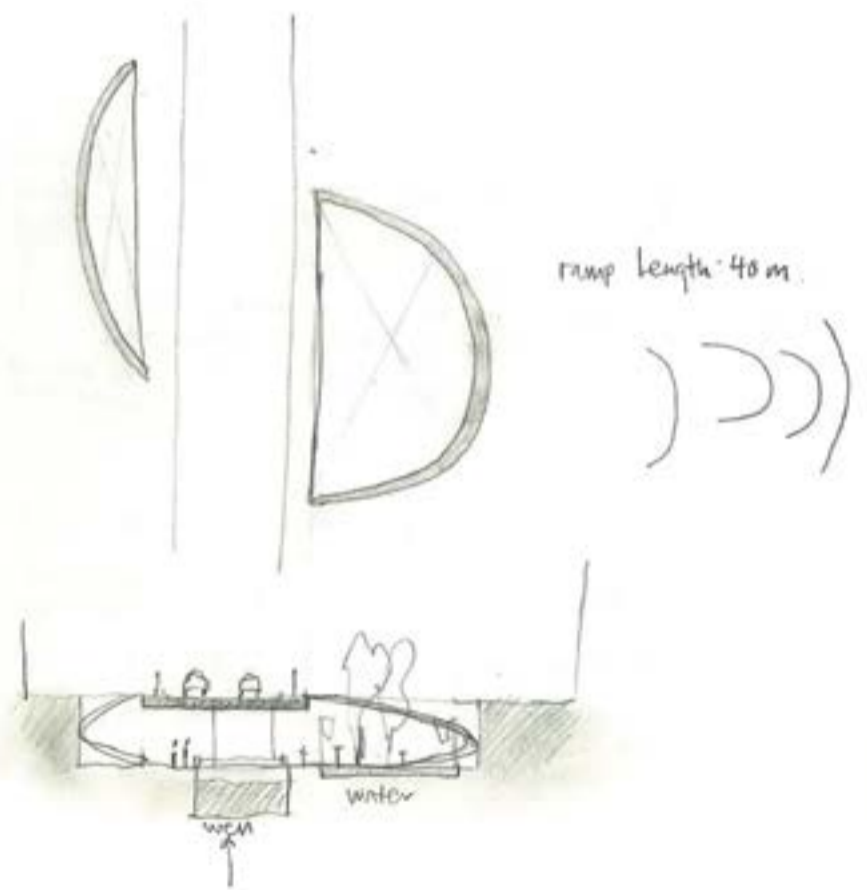


ADDITIONAL CONNECTIONS



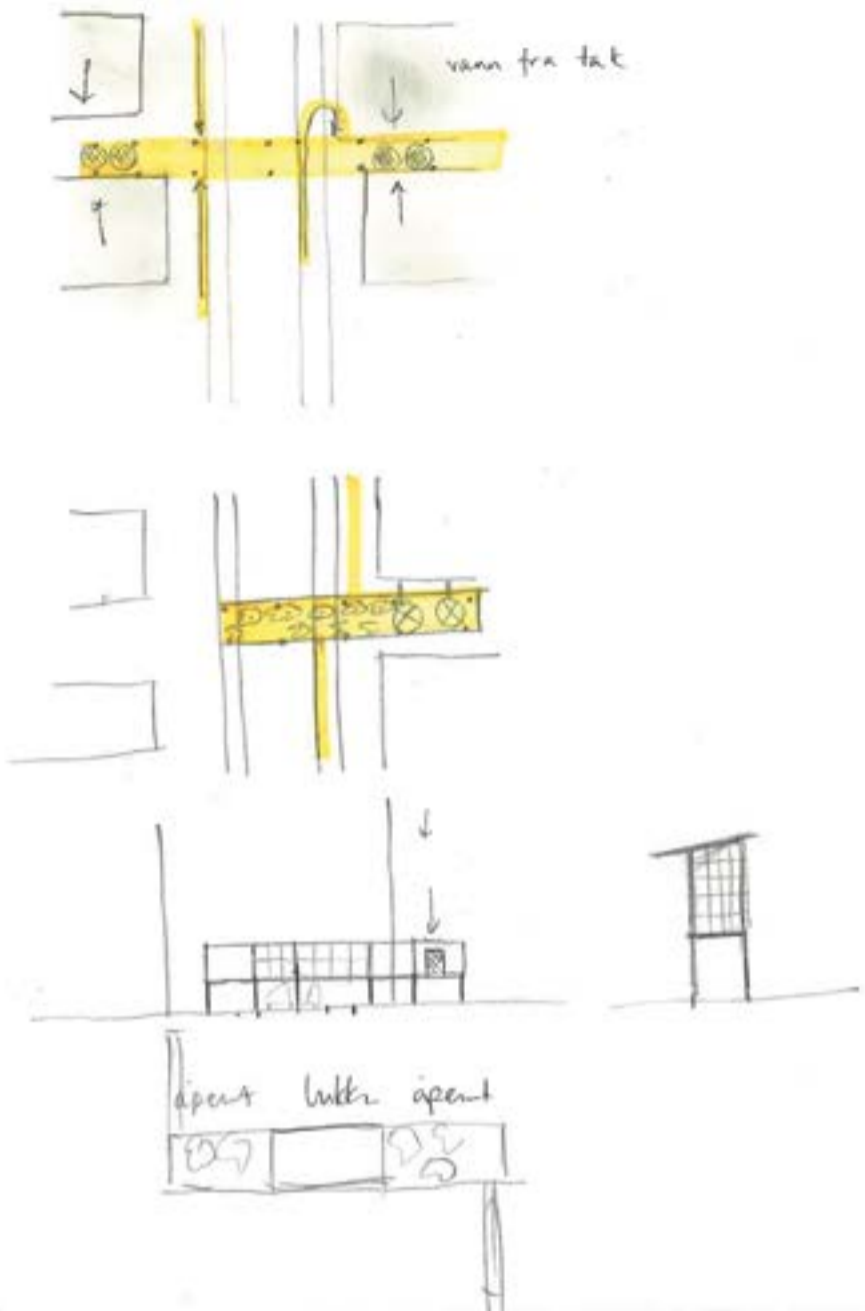


RAMPE (SxO P. regulations)
 max inclination: 8,33% (1:12)

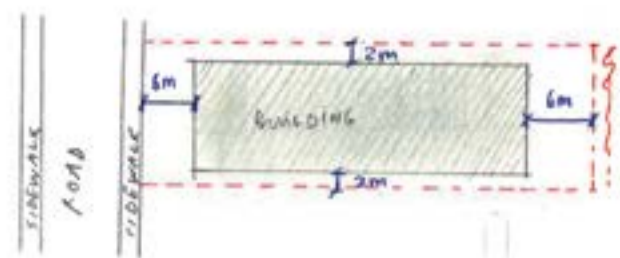


Basket: min. ceiling height: 22m 4.8m
 Program: variation → gym, sports, play, fountain, temporary market space (flea market)
 req: open spaces
 + water taps.

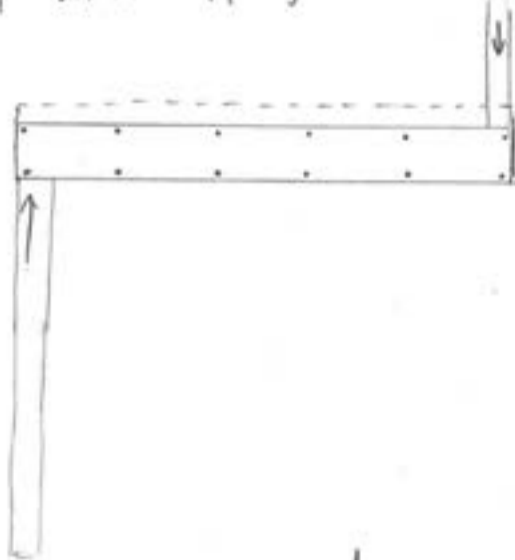
PILONIS PARK



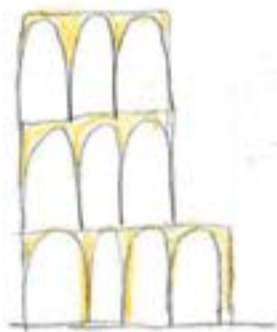
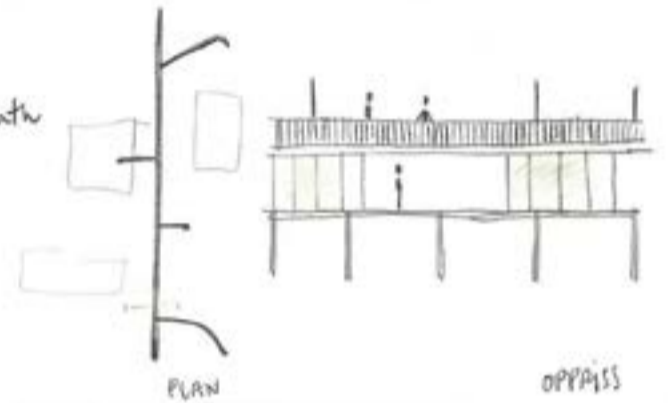
LEGISLATION (HIGIENOPOLIS)



* Ref: Biblioteca Infantsjevern Montenegro Lobato (1950)



* Ref: Bellinzona Bath Galfetti

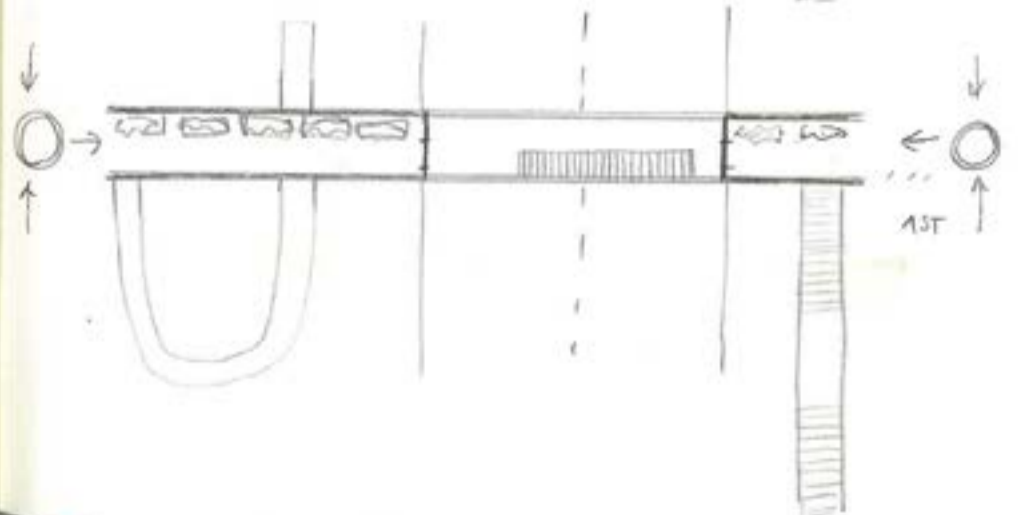
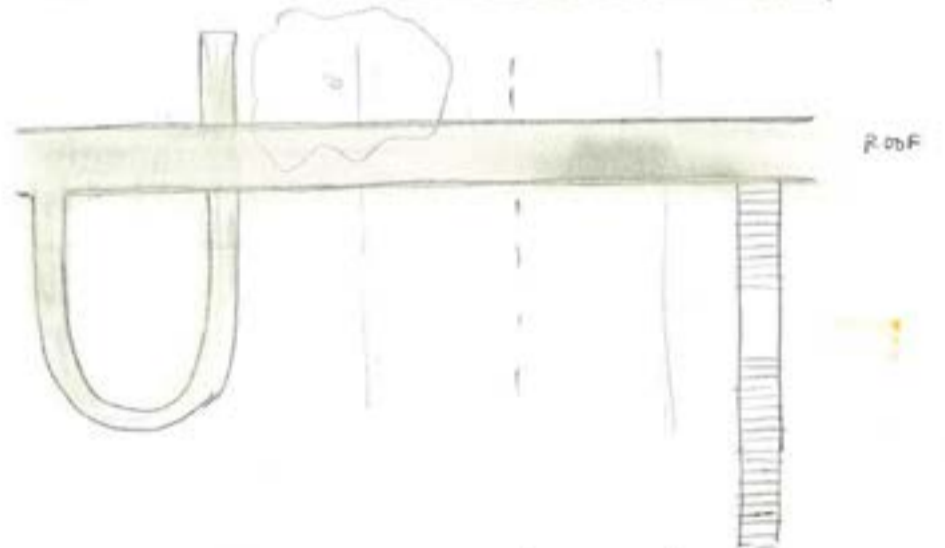


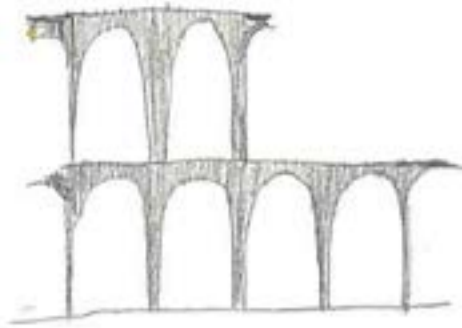
ARCH
i høyden
horisontalt →



PILONIS
horisontalt →

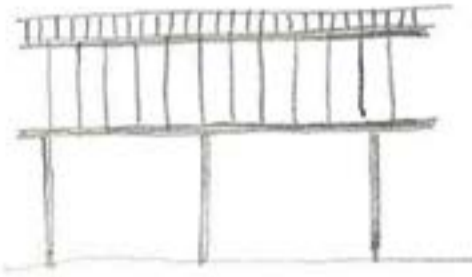
V-GROUPE





↓ WATER

→ STRUKTURE
↑

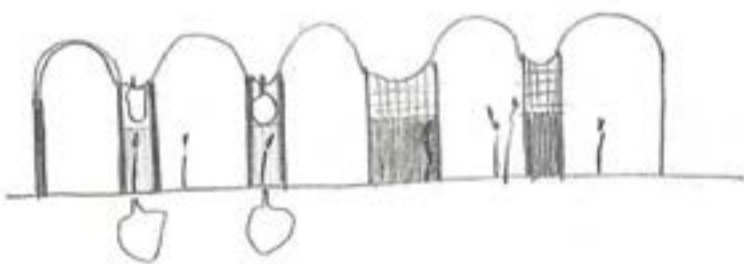


↙ ↘ WATER

→ STRUKTURE

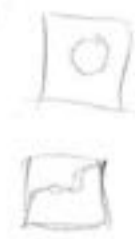


↑ WATER

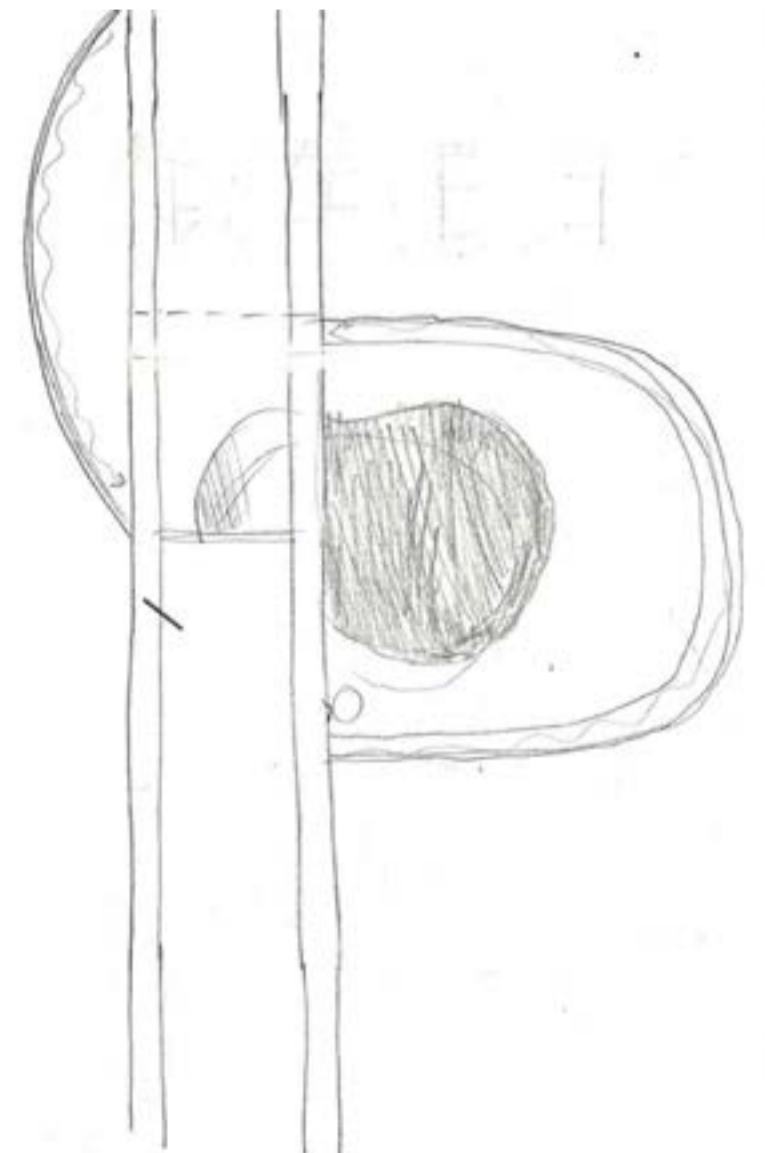
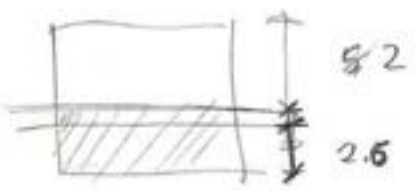


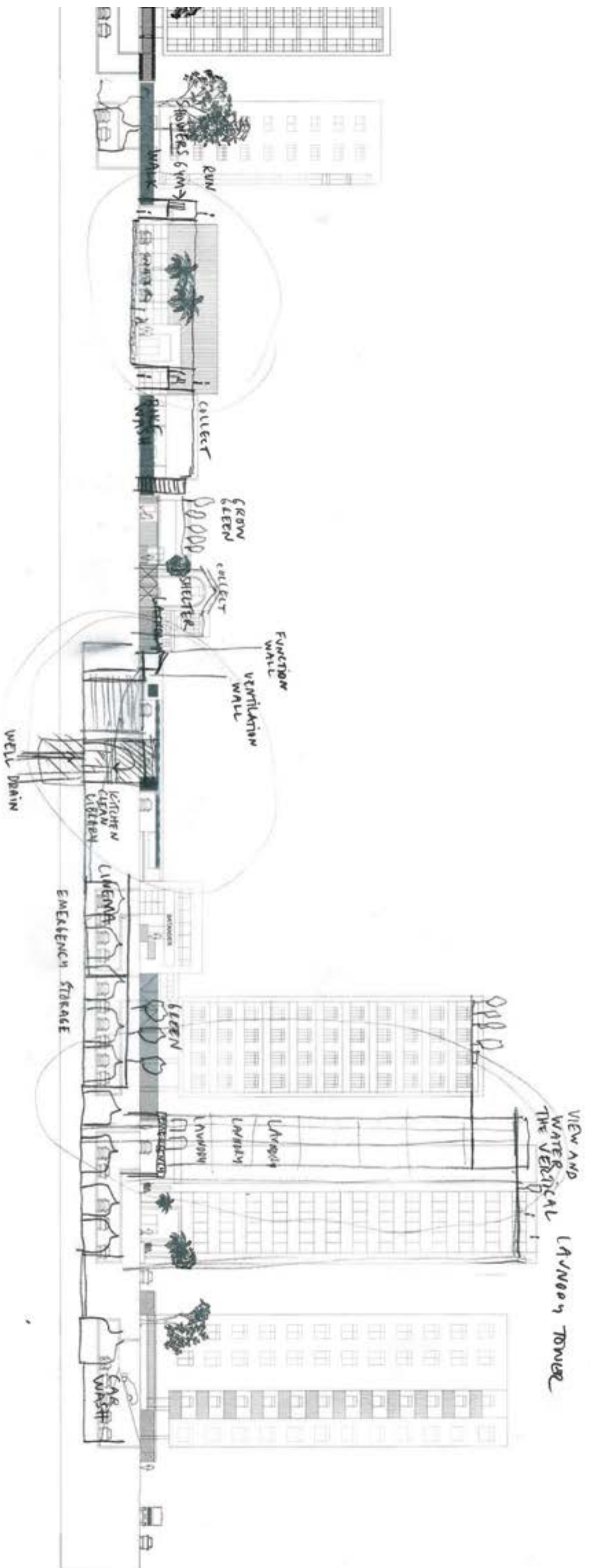
Modell 1:100 1m = 1cm
 1:200 1m = 0,5 cm
 1:500 1m = 0,2 cm. 8m = 4 cm

- 0 plate
- 1 gravur
- 2 innvendig kutt
- 3 utvendig kutt

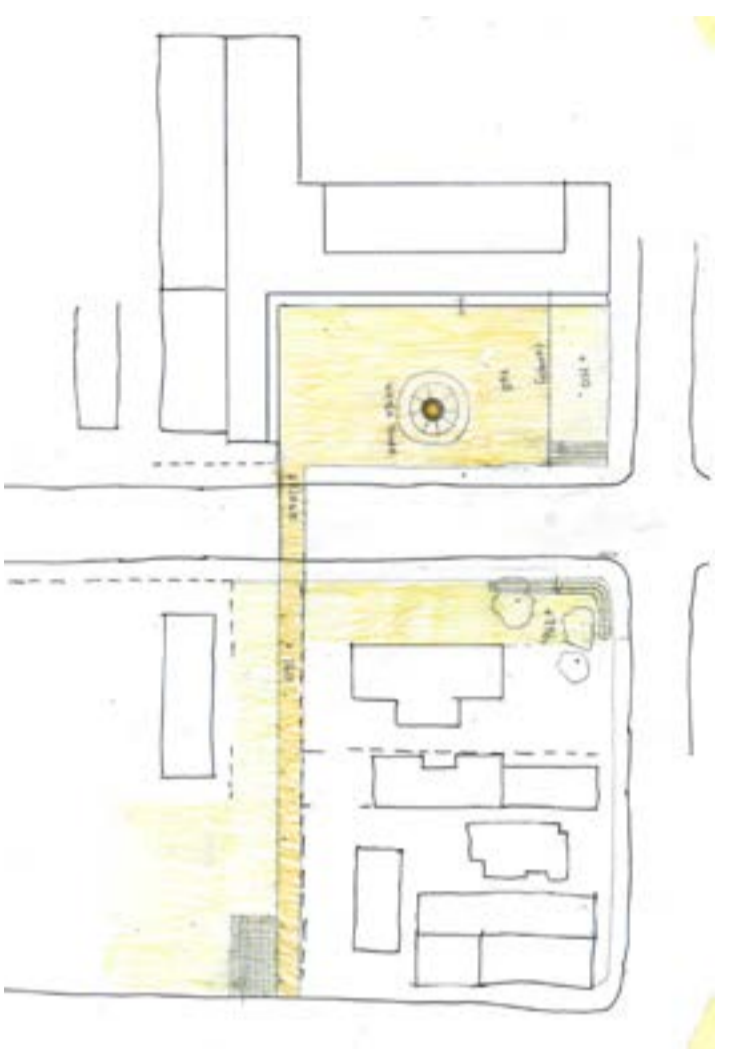
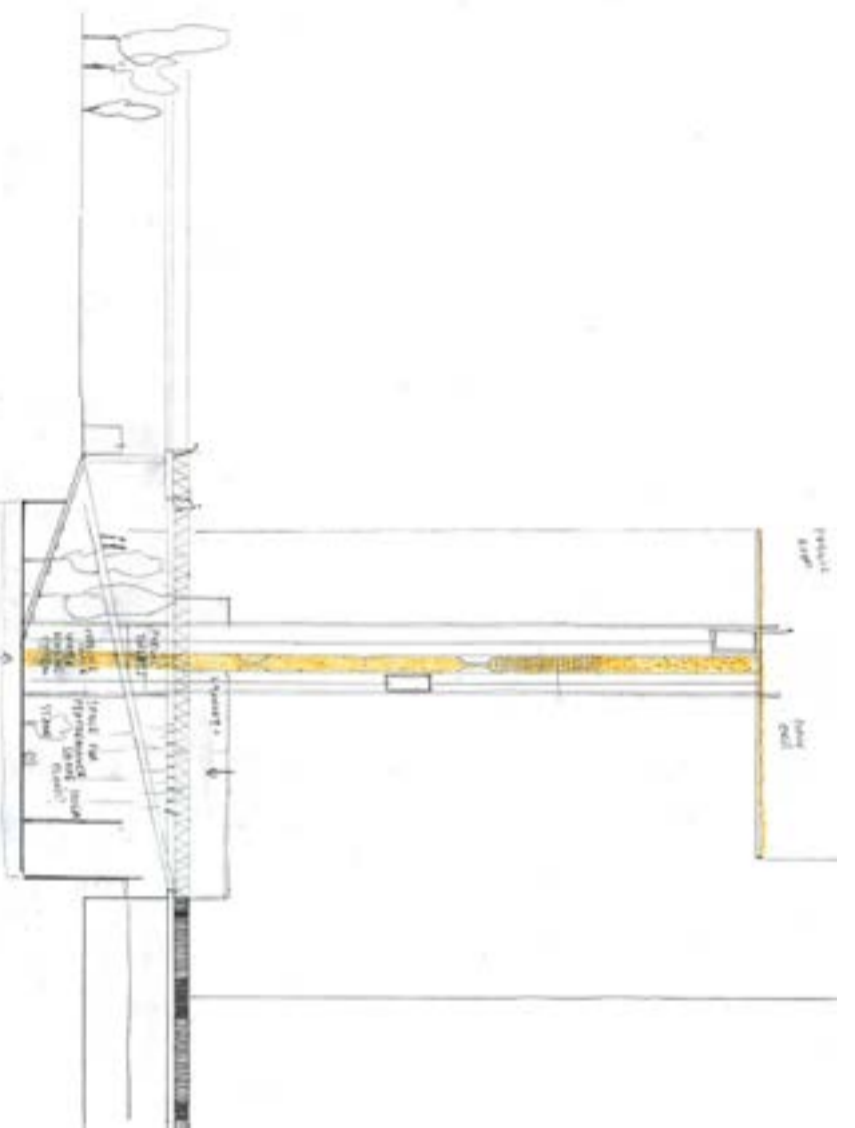


1m
 1:100 = 1cm
 1:500 = 0,2 cm
 1/500 =

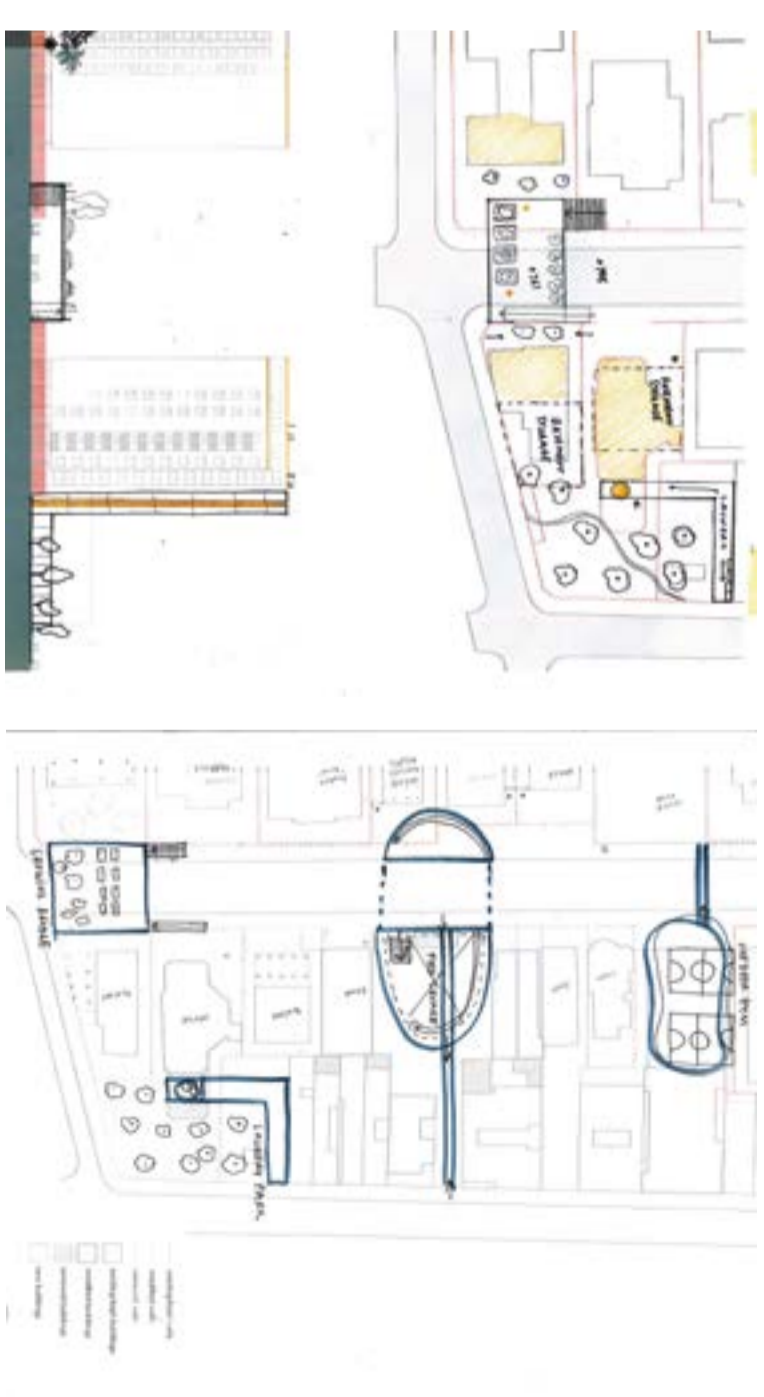
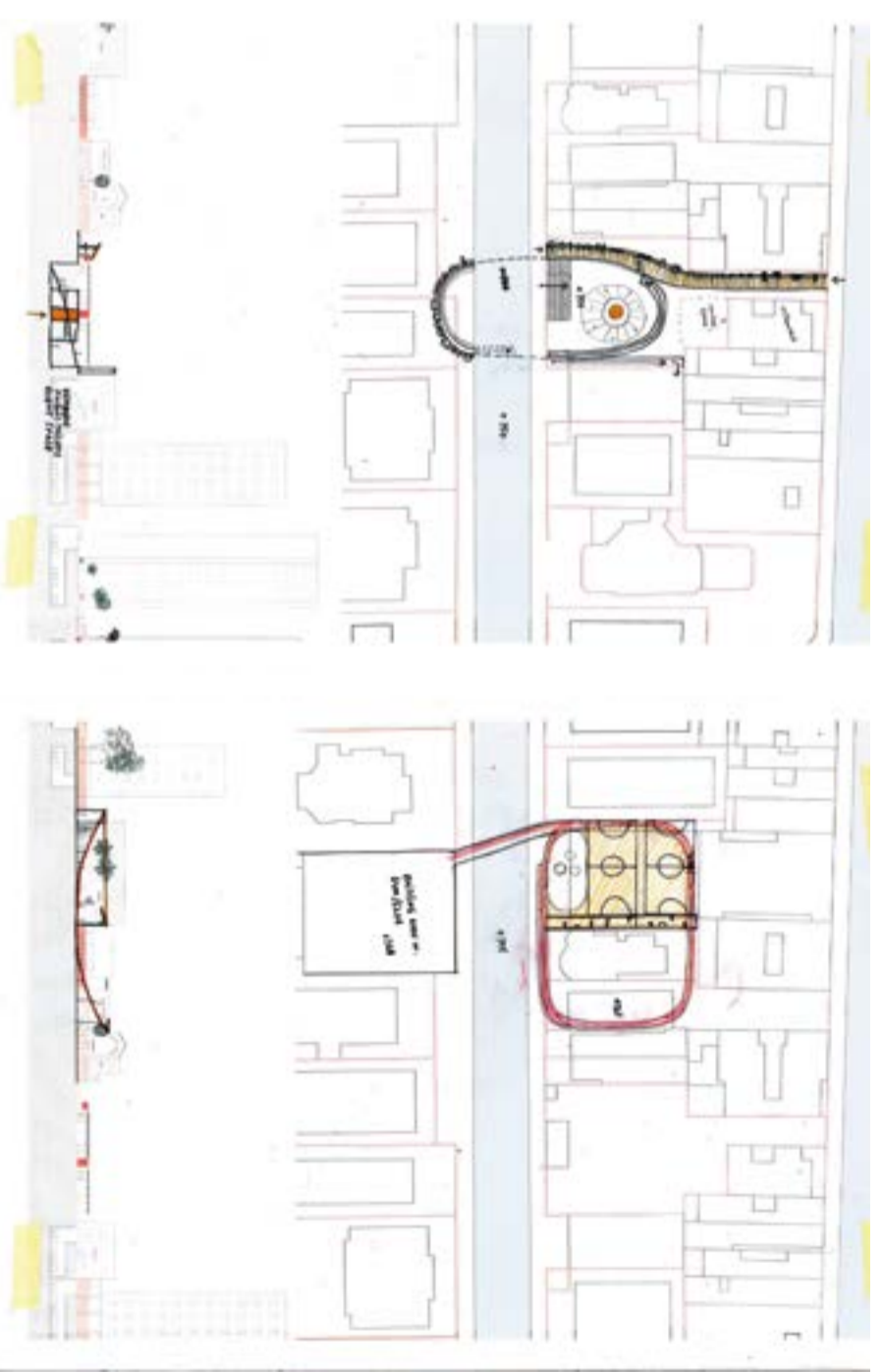




Process: sketches, ideas on working with different levels and programming new walls



Early sketches on rainwater harvesting and public space.



Early sketches on three- four different project proposals for a new "wall", implementing water.