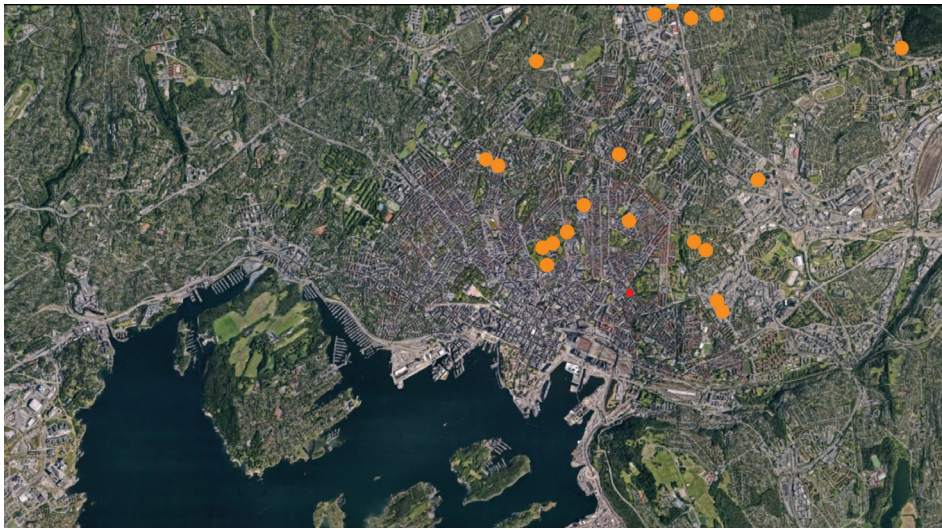


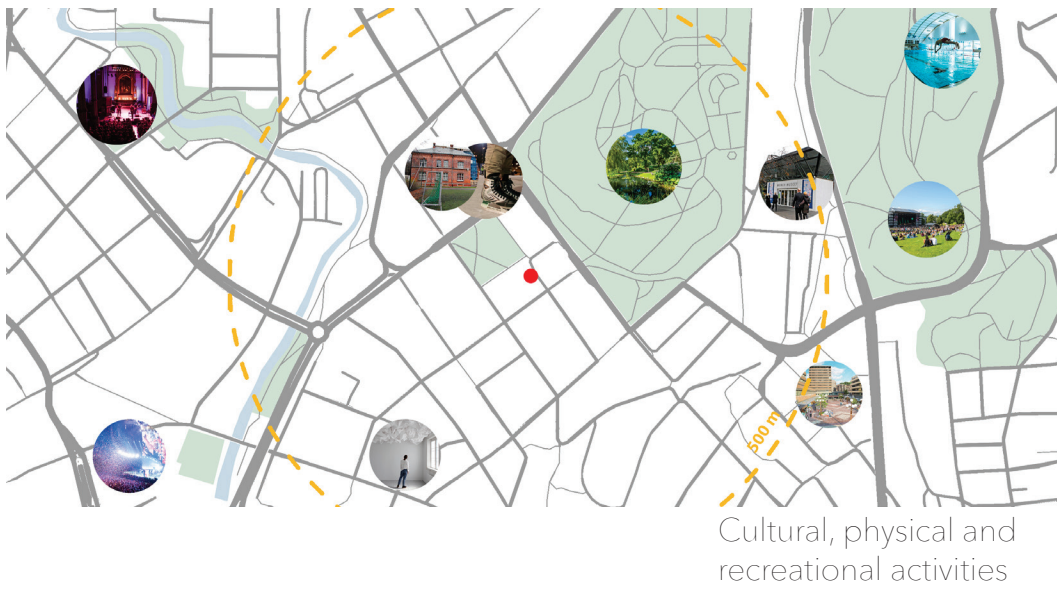
PROCESS

INFILL

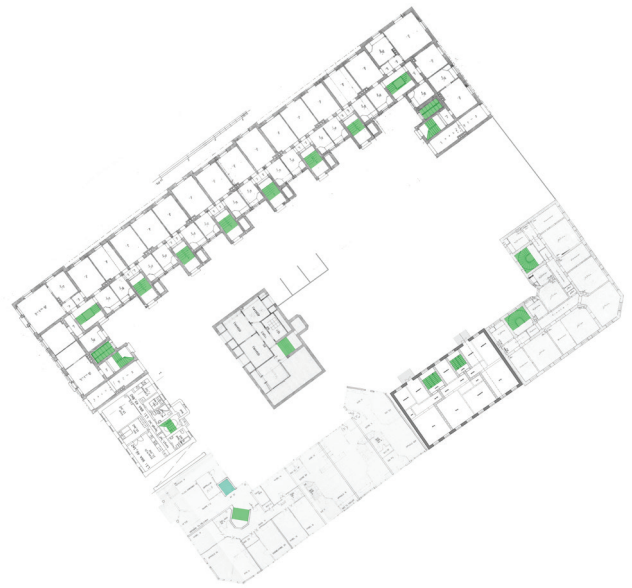
Student Housing in Tøyen



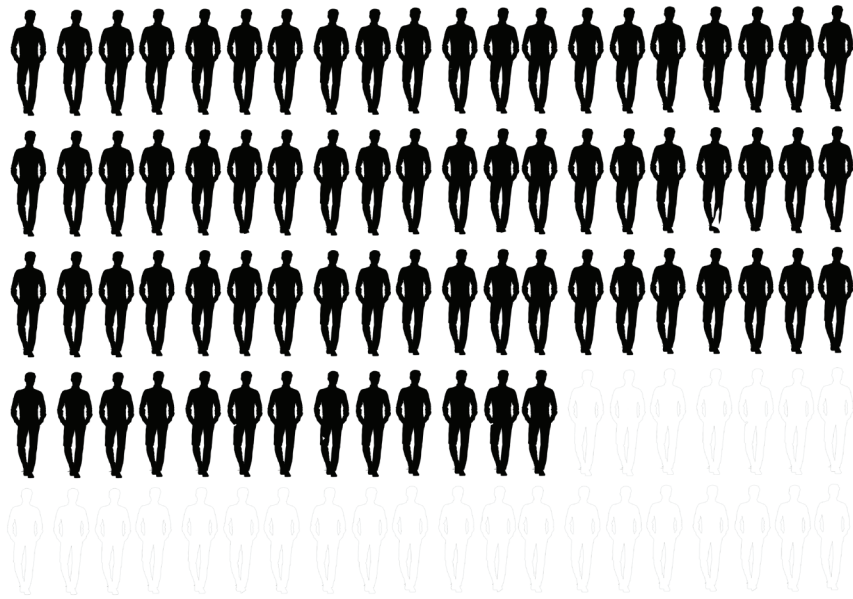
I started my process by analyzing the site;
How it meets Oslo, education places, other student houses in the city



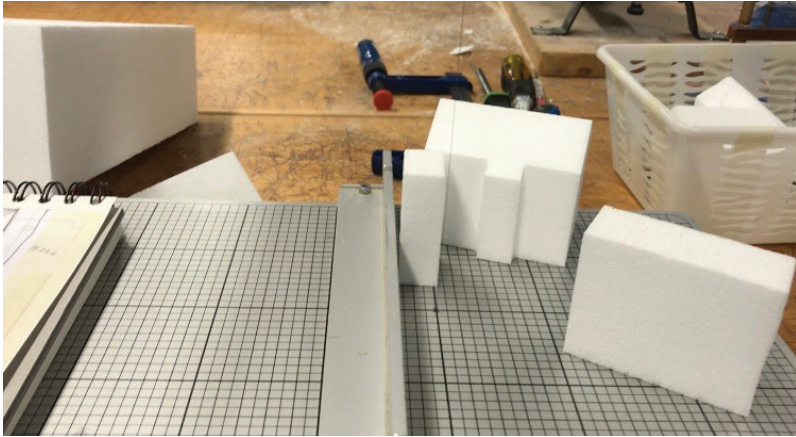
Going further in to the urban, domestic situation.



Looking into the plans of existing buildings to see if there is something there to inform my project. Most of the buildings are old, and there is only one elevator in the entire block. Most of the entrances are inside the courtyard. The three passages into the courtyard are at each short side of the block.



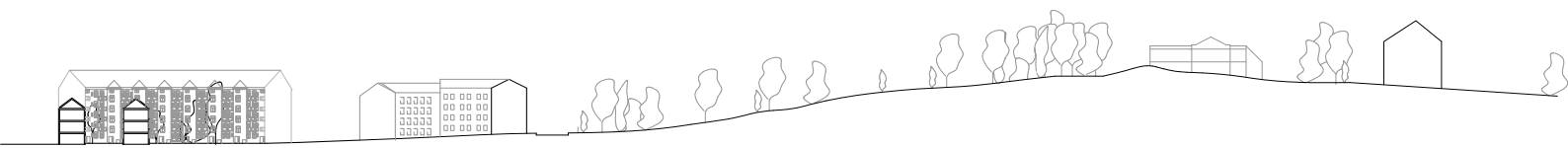
I also visualized statistics about who lives in the area (income, age, etc) and how it is to live here compared to the rest of Oslo (safety, transport etc.)



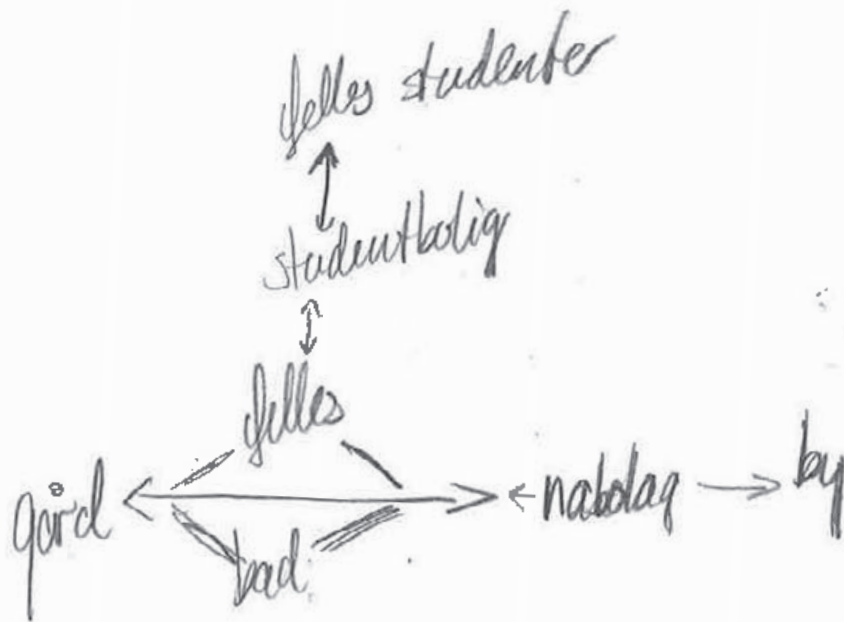
This time was also used to make site models. One model of the entire block in scale 1:200, good for studying light and volumes. The 1:200 model has been used as a tool throughout the entire process.

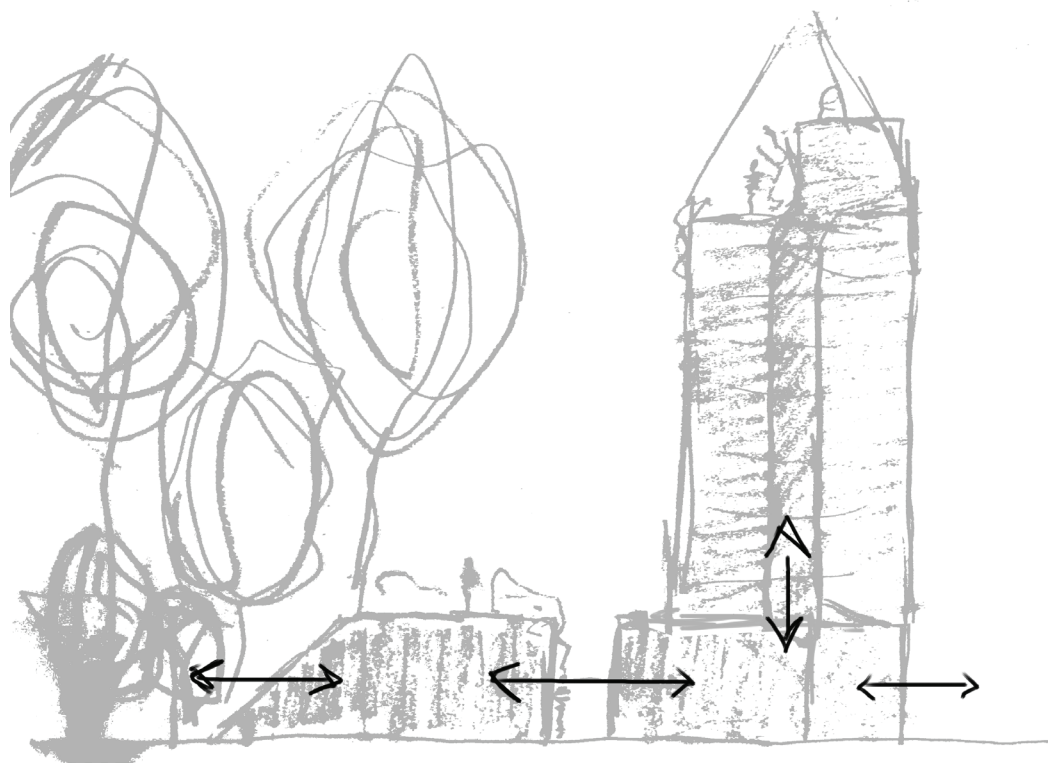
The other model is more elaborate in the scale 1:50. This is more a presentation model. It shows the short side of the block, where my site is placed between these two buildings. I think a model like this is important in an infill-project to show the visual relation in facades.

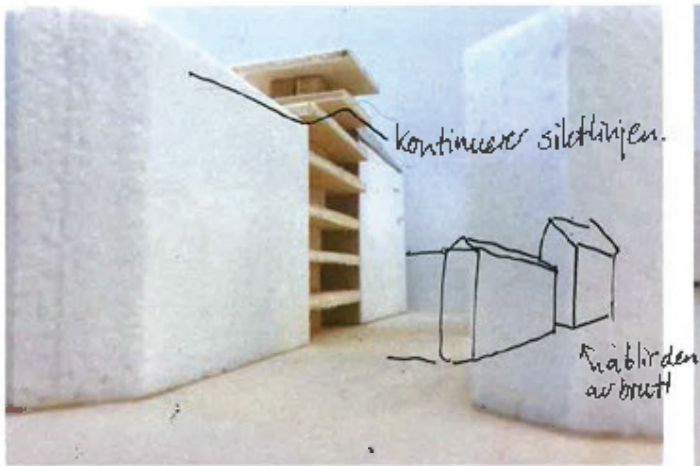
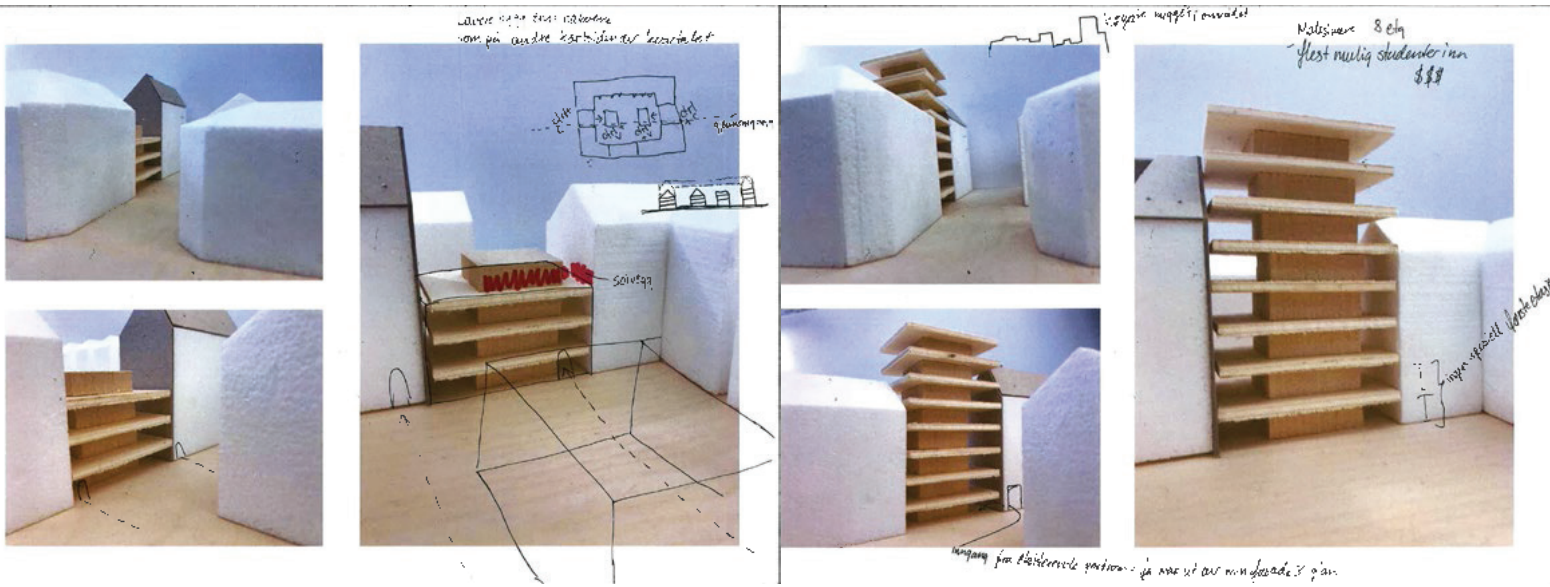




Cross section with the botanical garden

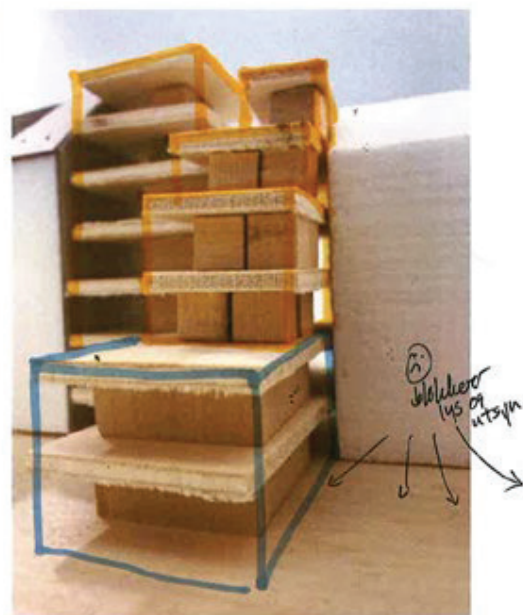
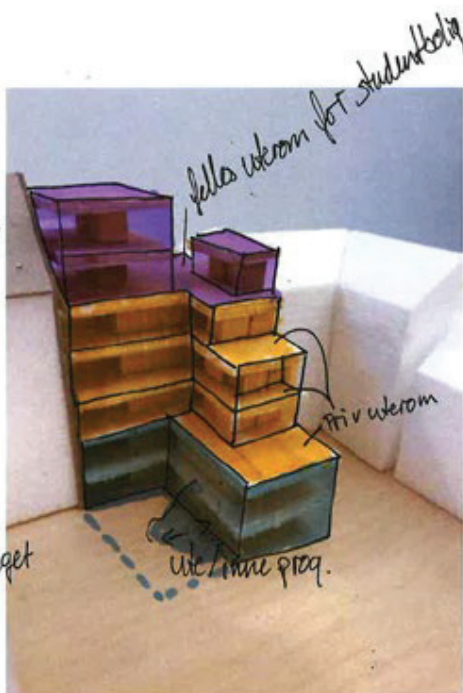
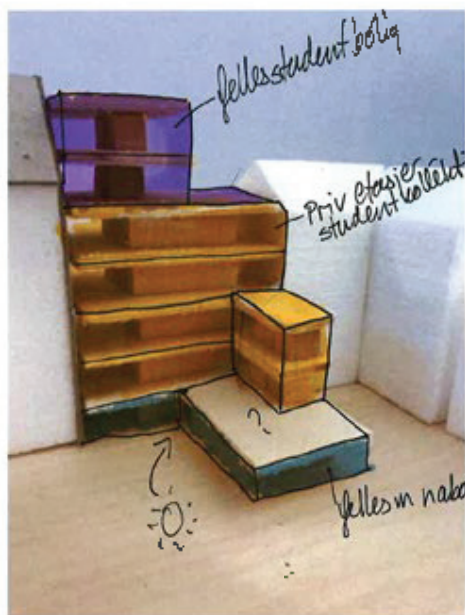






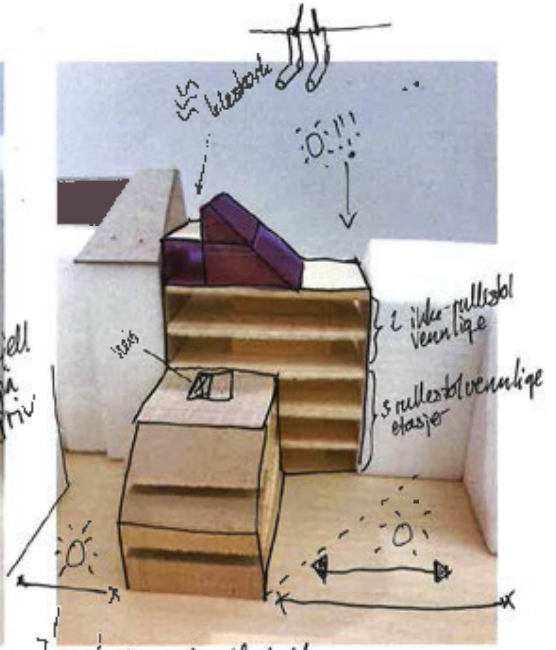
Volume studies in model 1:50 while defining the programme. Researching the limitations and opportunities with the site. Studying the relation between the neighbouring buildings and entrance/ arrival

Bygge utover i uterommet spidsrommet.

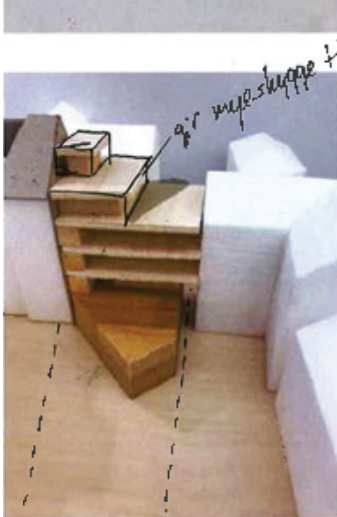
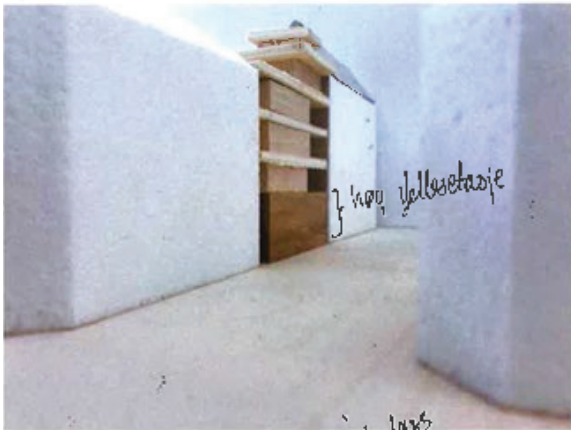


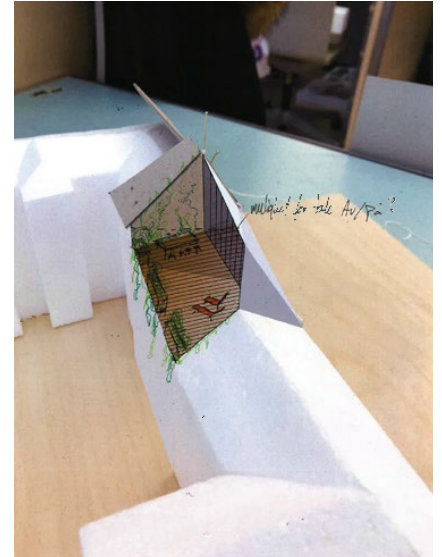
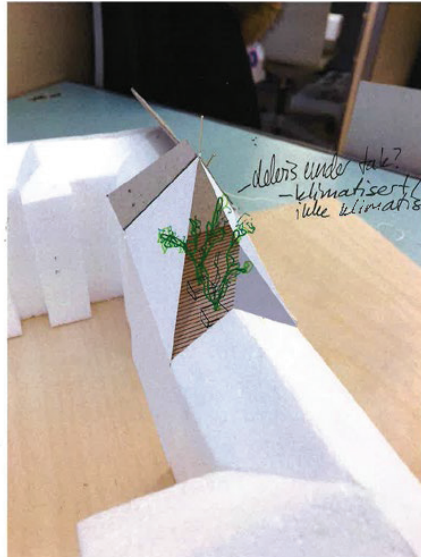
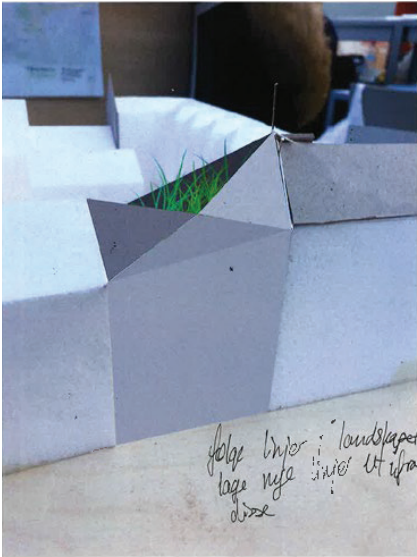


Ingen forskjell
i etasjer på
velles / triv

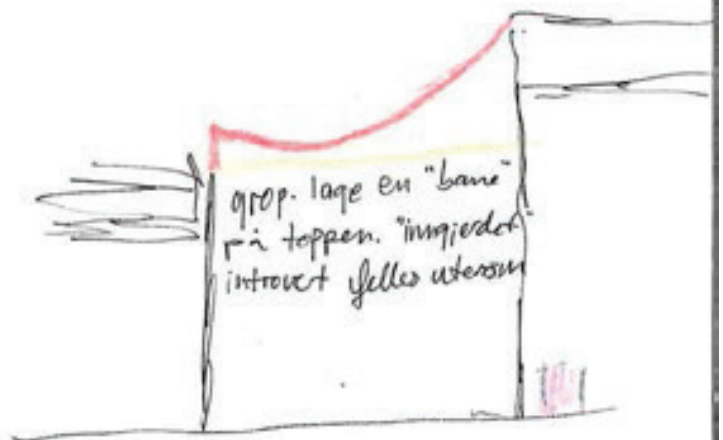
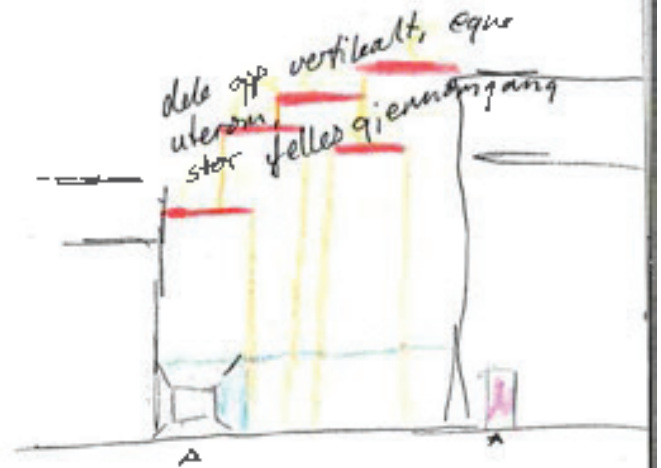
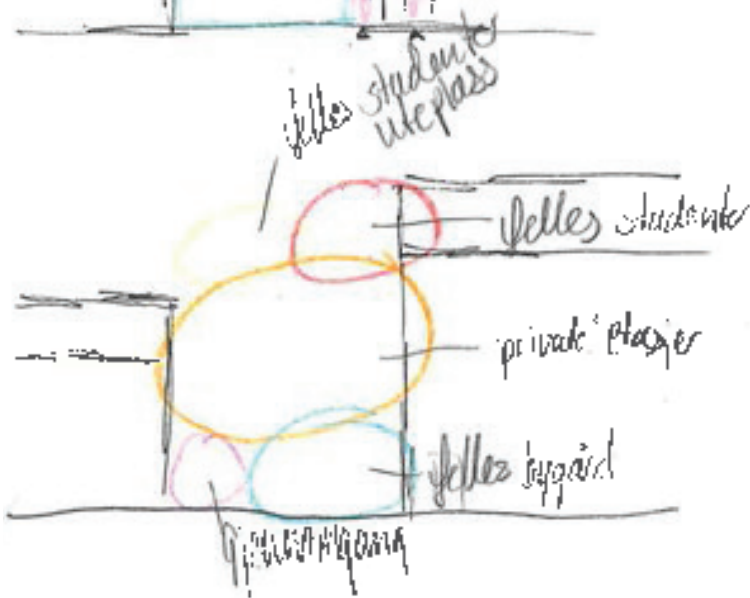
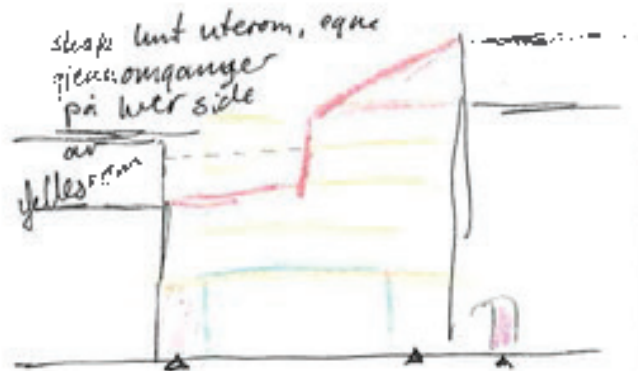
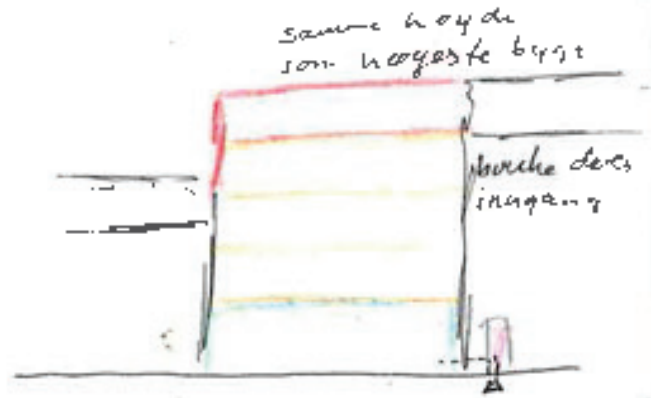
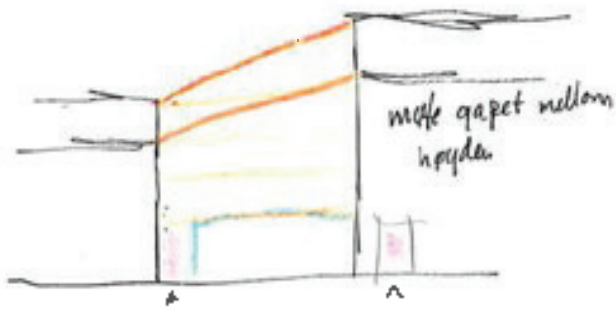


Tramt, men gode solforhold
(på visse tider om dagen)

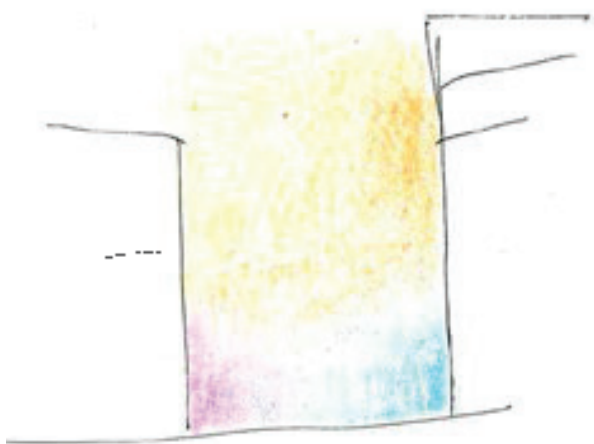
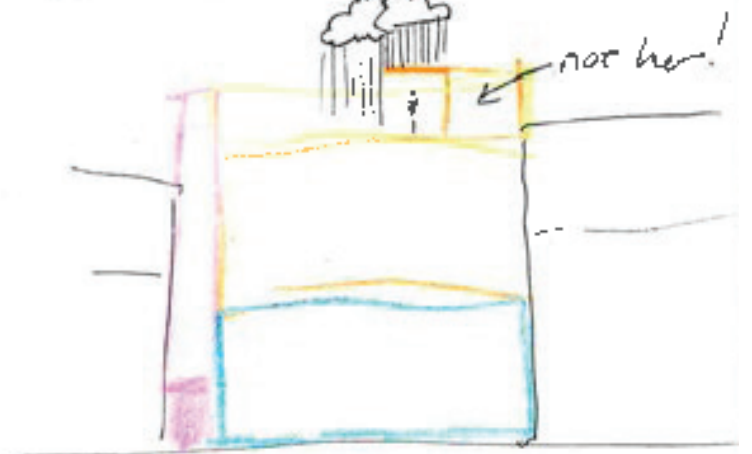
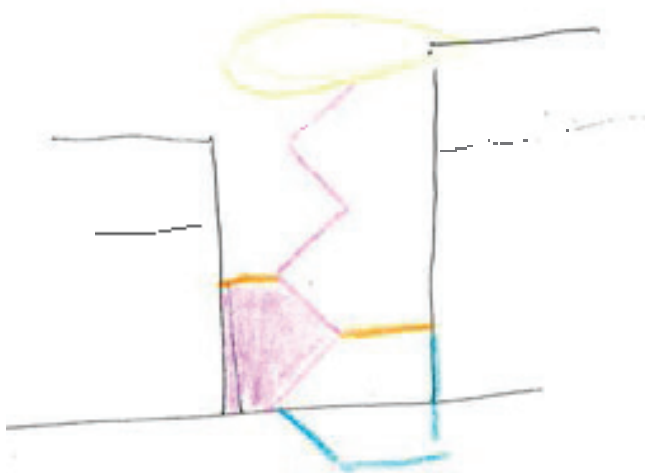
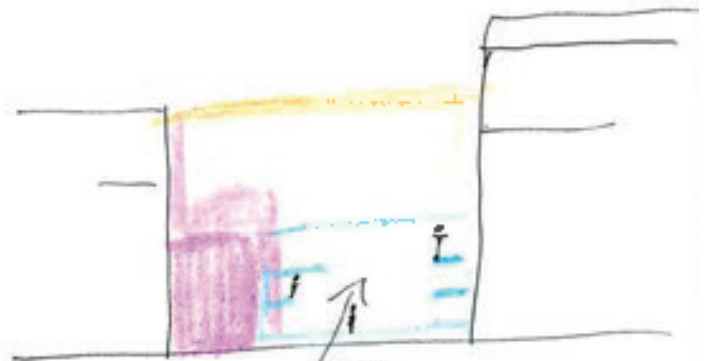
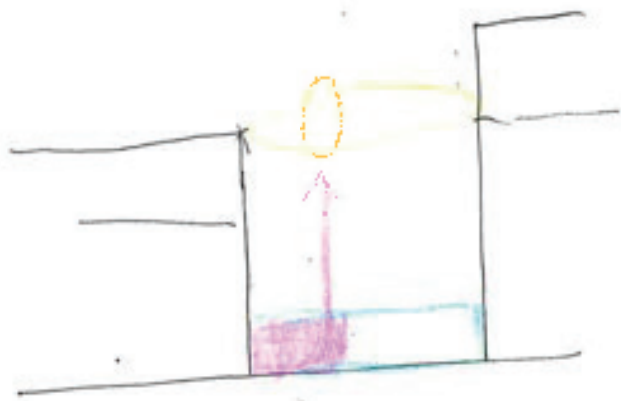
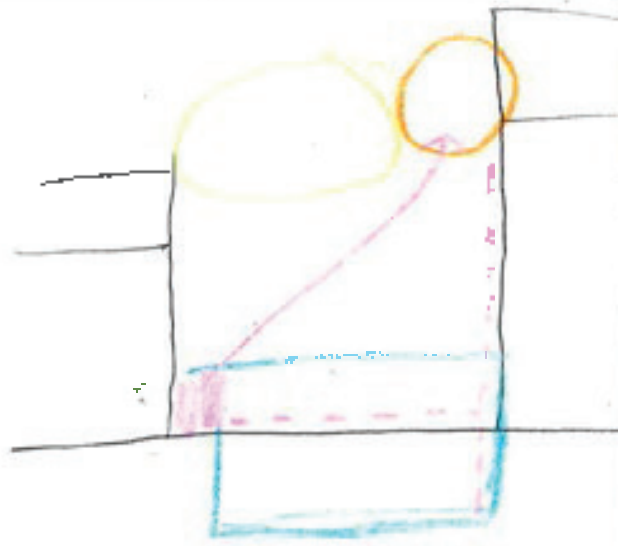
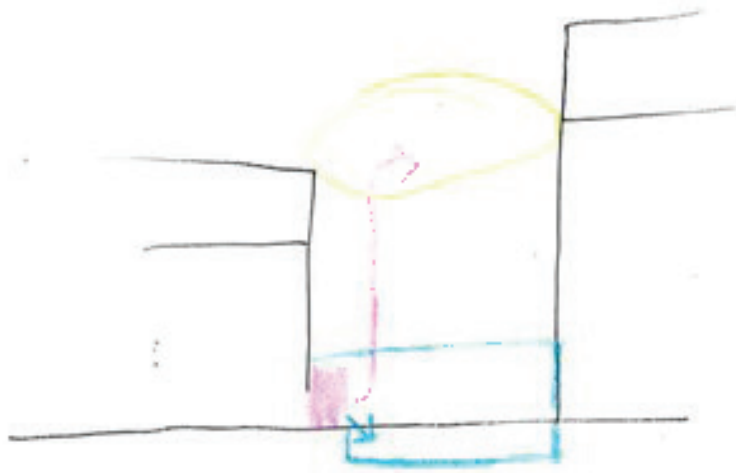


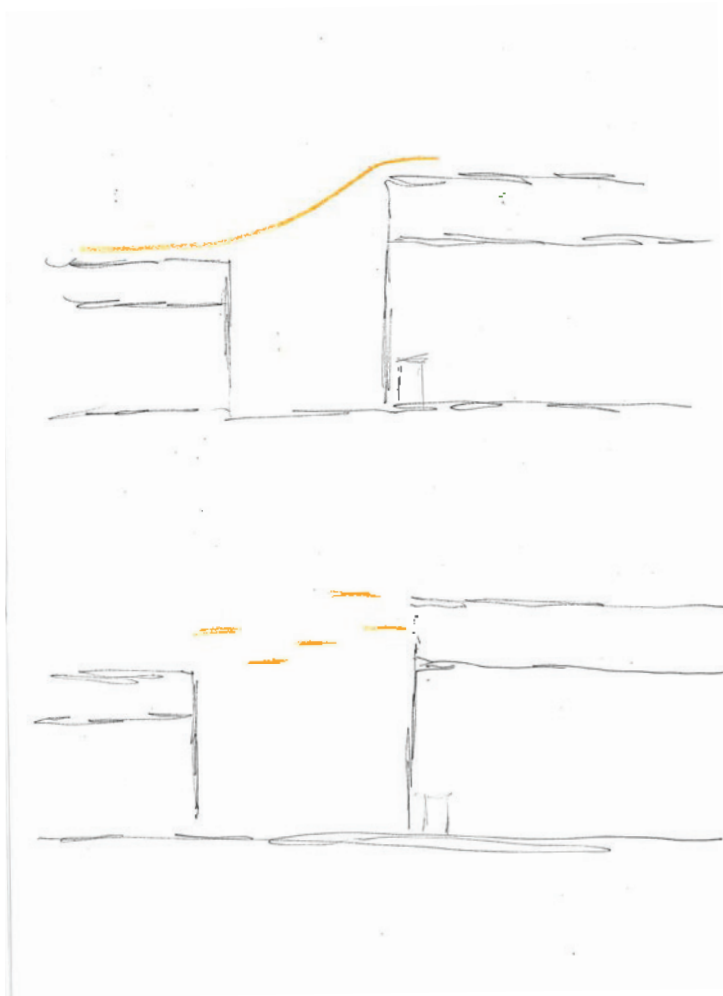


First thoughts of roof. A roof terrace that embraces the very good sun conditions and at the same time works as a link between the two roofs in which it is inbetween.

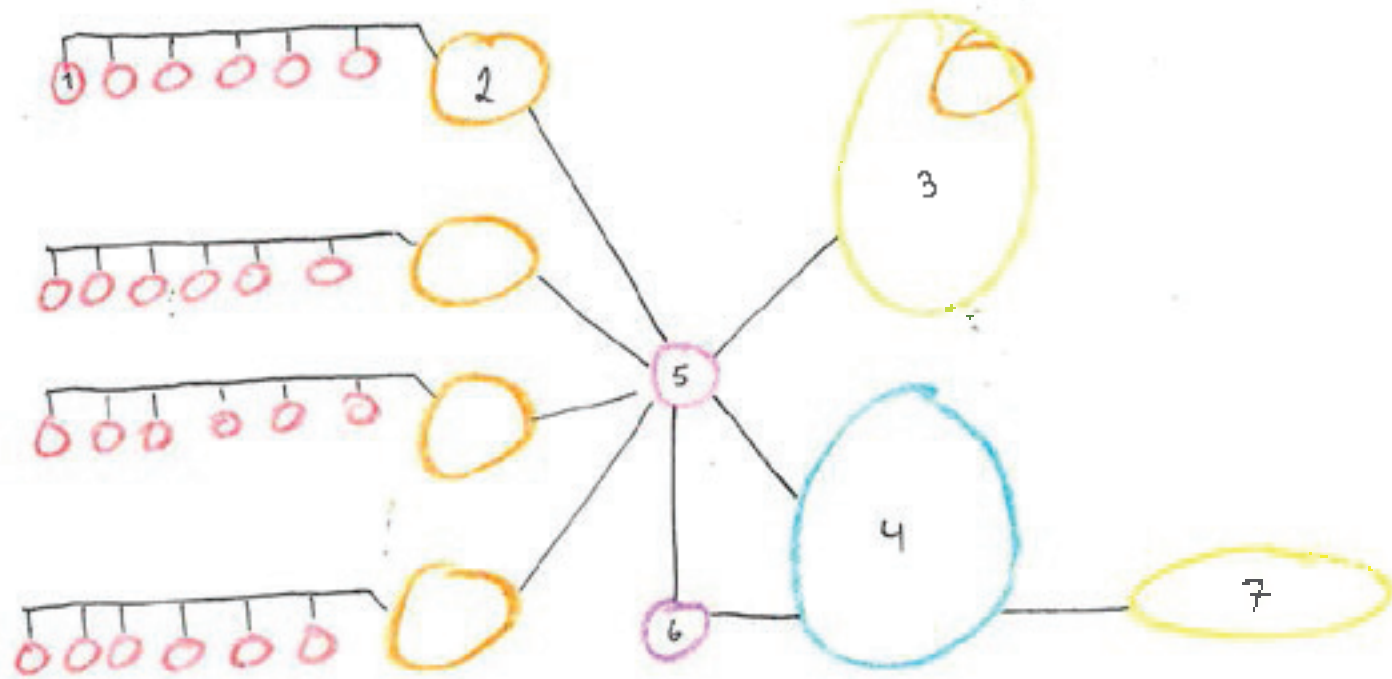


Thoughts about program in section





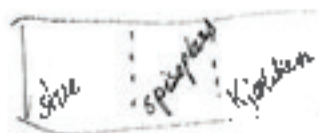
I set a "rule" for myself, that in some way, my roof would function as a continuation of the existing roof scapes



1. priv. pult i kollektiv (seng, pult, toalett)
2. Delt fellesareal i kollektiv. (stue, spiseplass, kjøkken, oppbevaring)
3. felles område for studentene i alle kollektivene (klesvask, boder(?), talleterasse)
4. Fellesrom bygård
5. kommunikasjonskjerner
6. Gjensomsjans / port / velkommen
7. bygård

2: Stue, kjøkken, spiseplass

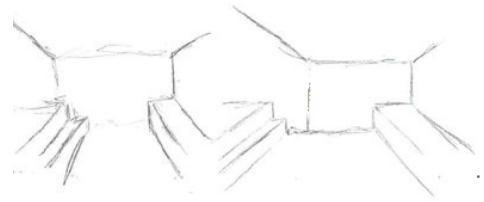
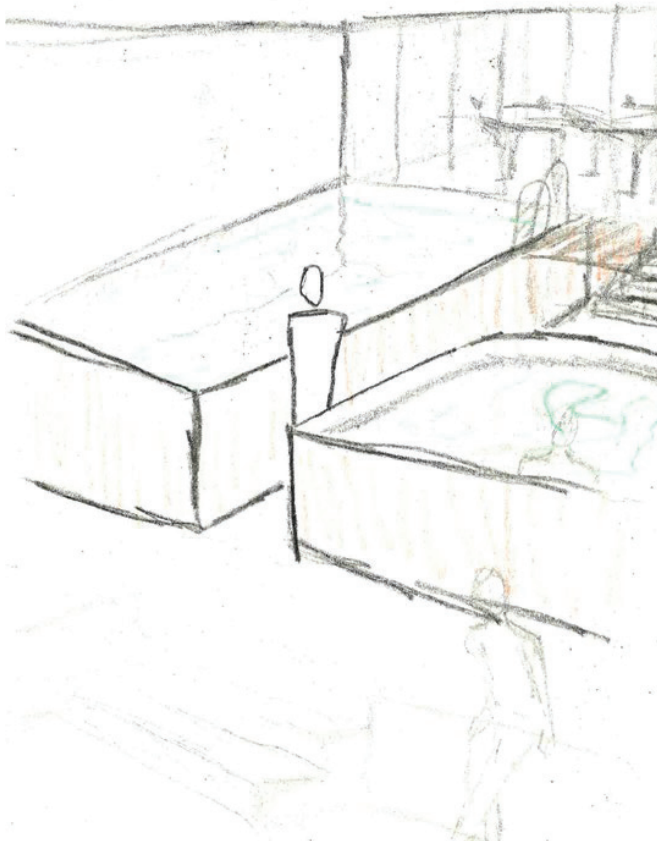
ifjnt i kenne dele opp, slik at man kan se på en ifilm i stuen mens rosenie har middagselskap. mindre institusjon - mer HJEM

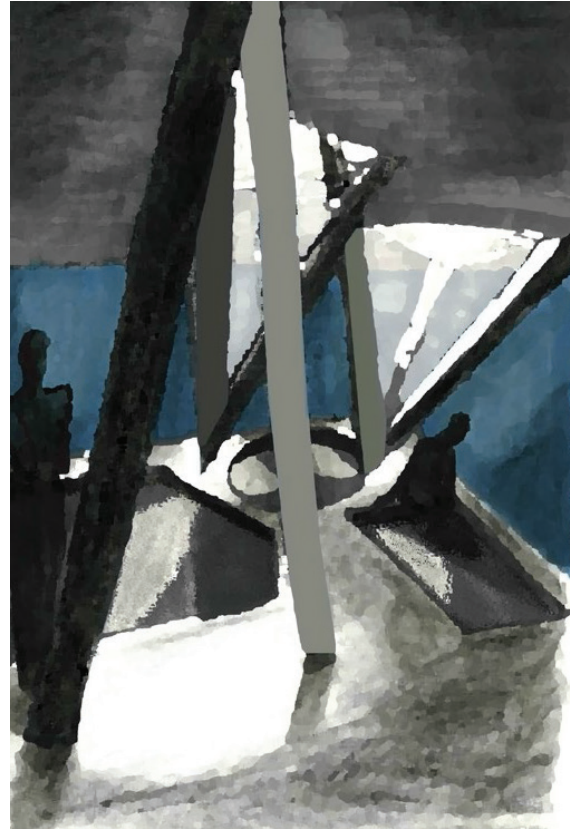
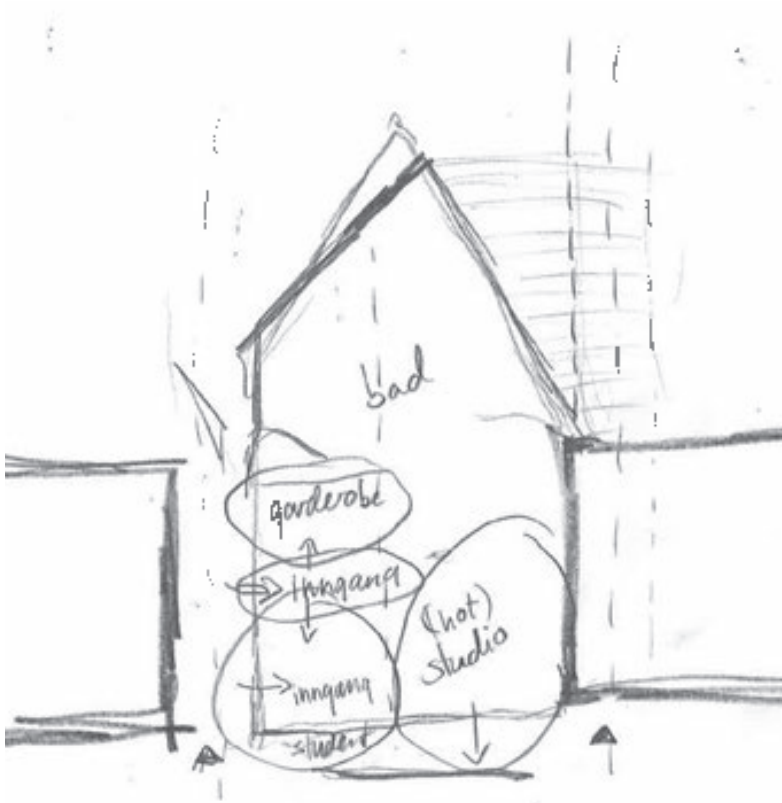


kjøkken kan deles av, kan ta seg en stime uten å føle at du bryr noen. slippe mat-os over alt. 6 mennesker - 6 middager - MYE mat-os.



Debating my self about what the common programme shared with the neighbours should be. For a long time it was a shared bath.

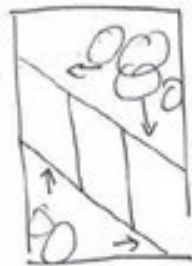
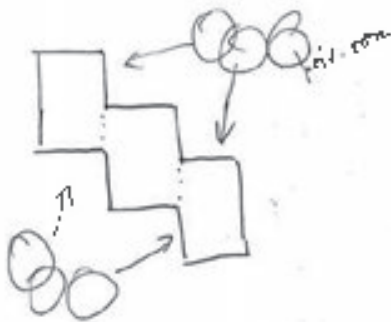
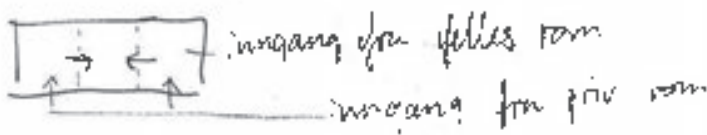
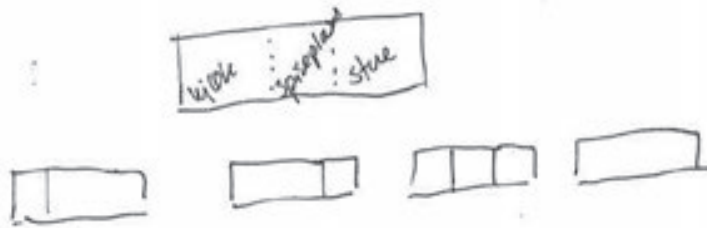






Salong (sofa, TV) deles av for flere aktiviteter. mot nord?
 hindrer blending i skjerm.

Spiseplass som melder - mulig å utvide både salong og kjøkken
 inn i spiseplass for større samlinger.



Kjøkken & stuemøblement
 integrert i limtrekonstruksjonen

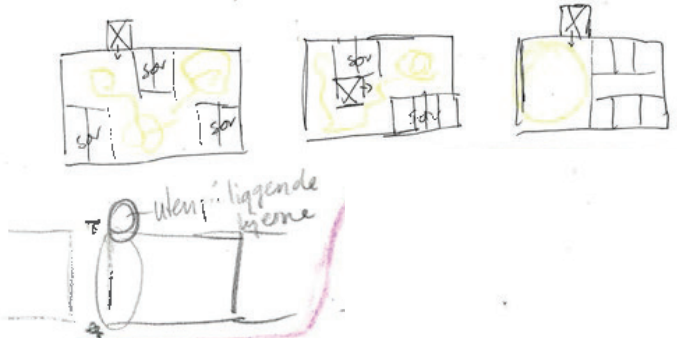
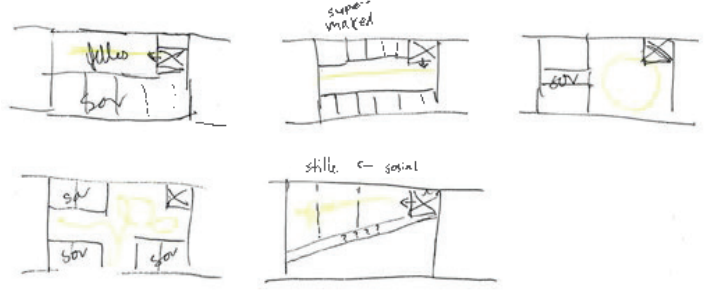
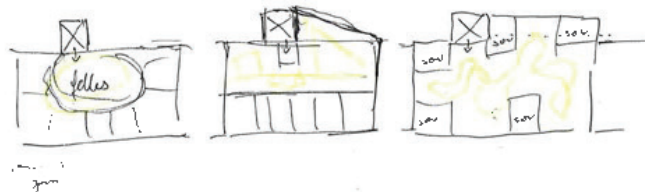
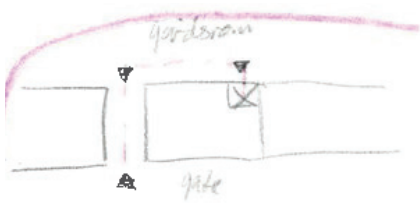
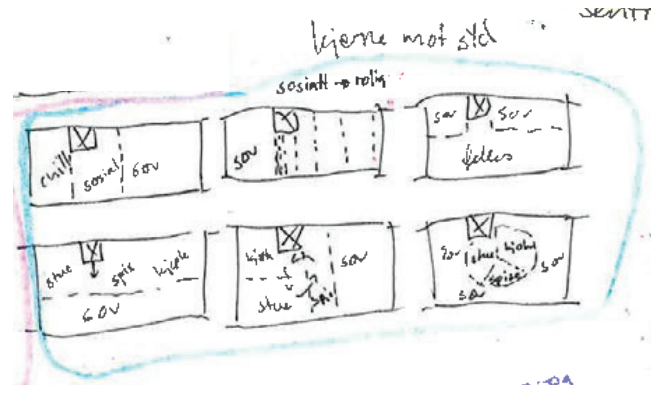
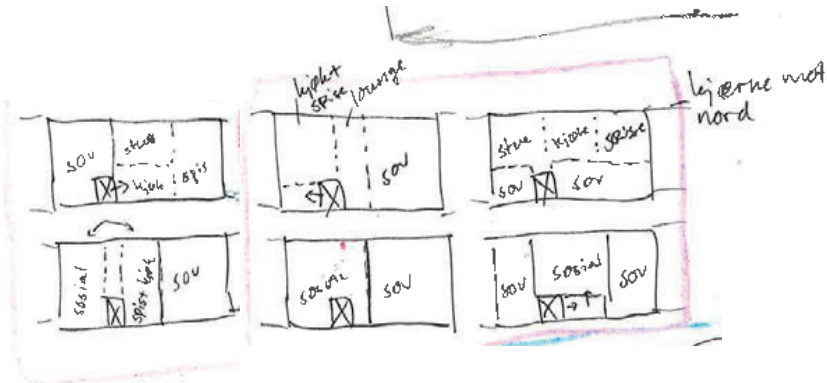


hva om vi ha dagelys?
 ikke god morgen!
 planter (levende)

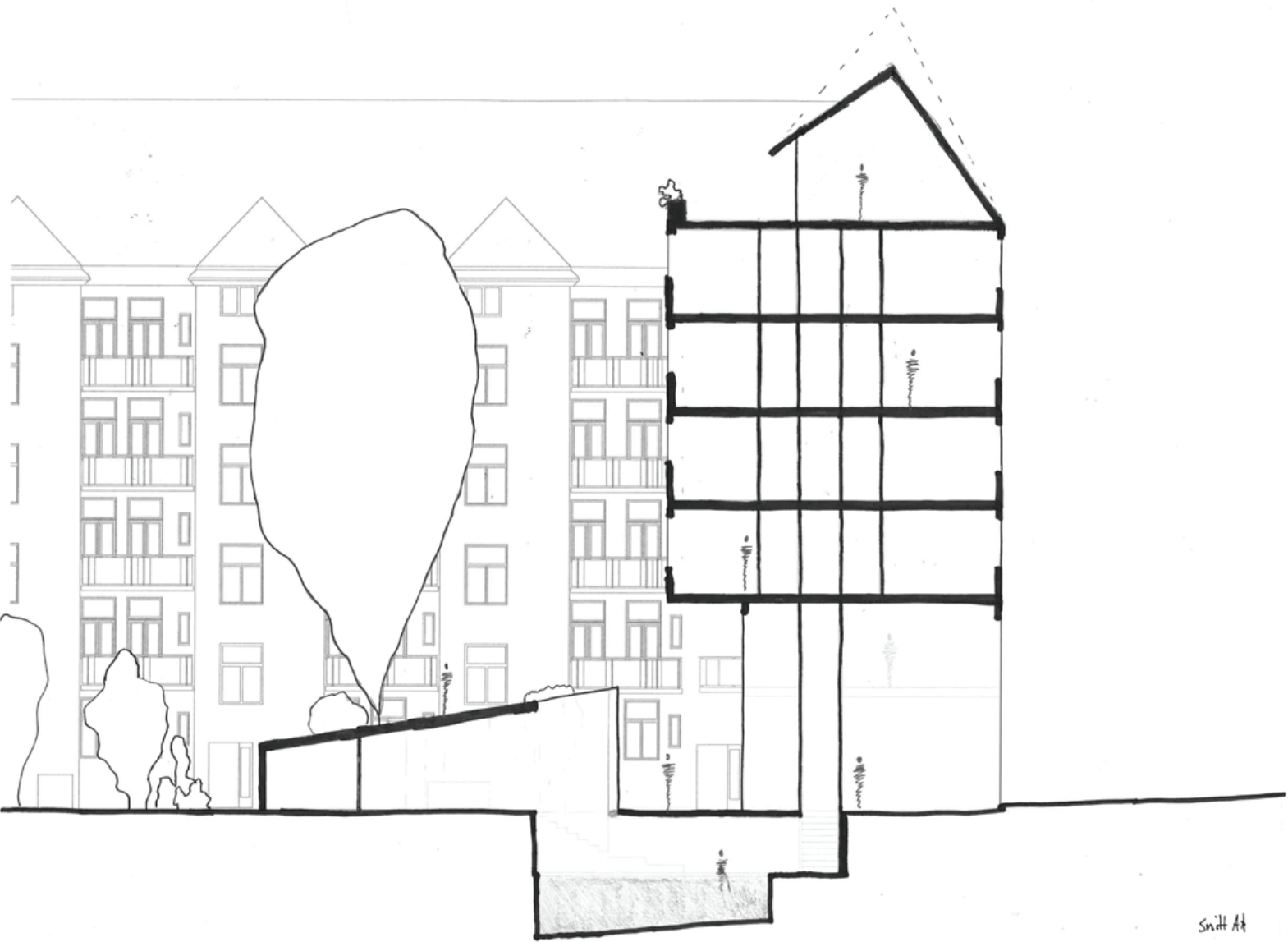
spiseplass - utsikt

salong - TV + sol i n

om Tven ha en plass / felles?



Thoughts about placement for vertical communication and entry



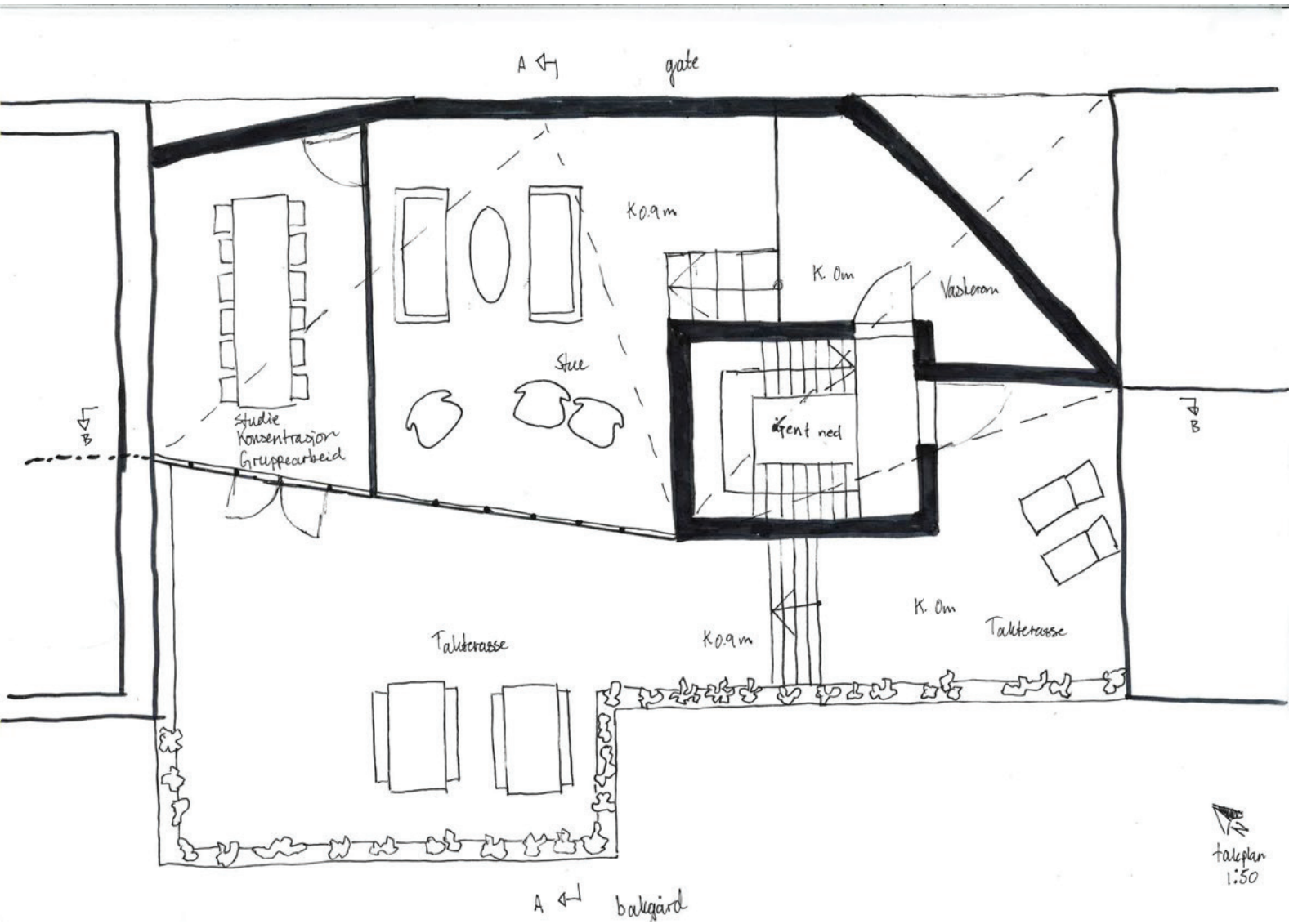
First drawing of a project comes to life.
Section showing a shared bath in a generous ground floor and basement



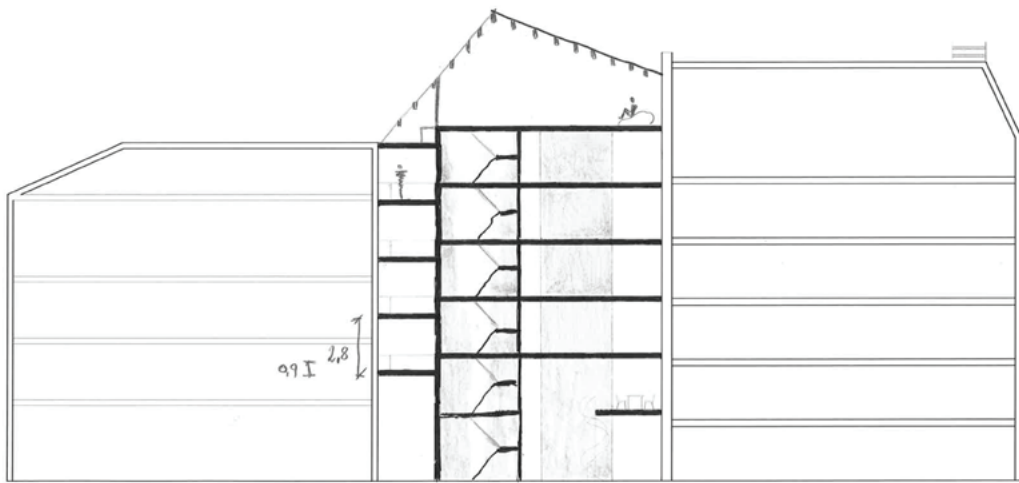
Ground floor plan



Typical plan of student appartement. Two central cores and a cross division of shared/private spaces in a split level plan

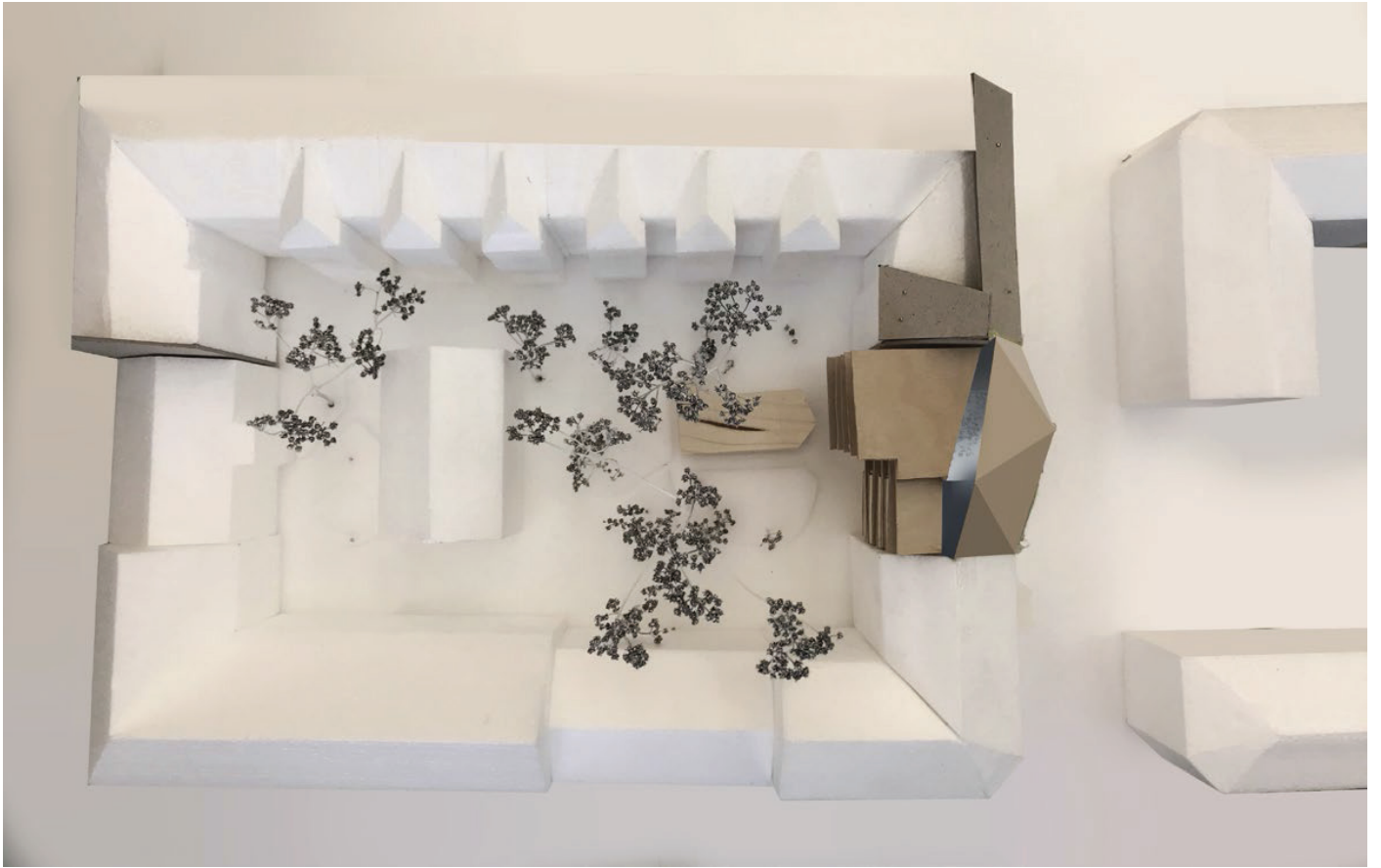


Roof plan with weird geometry as a result of a geometrical roof

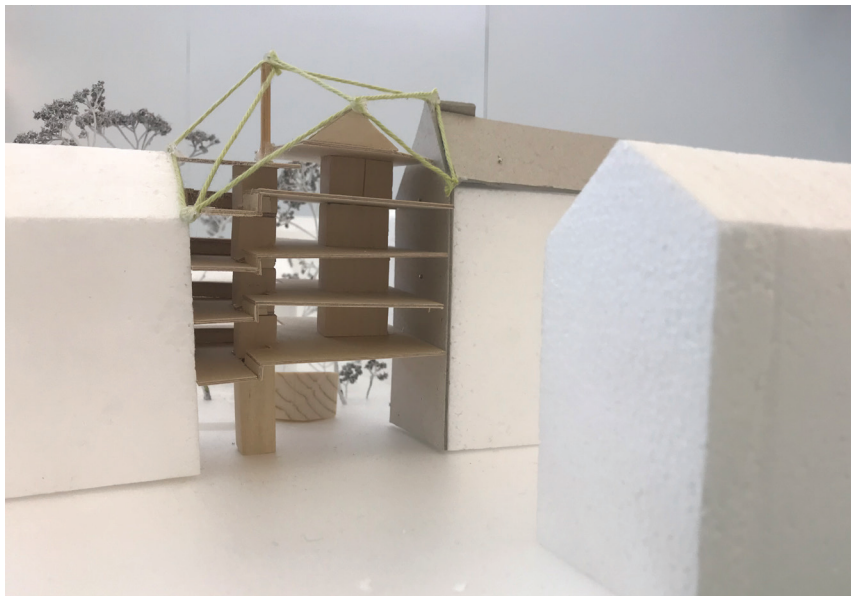
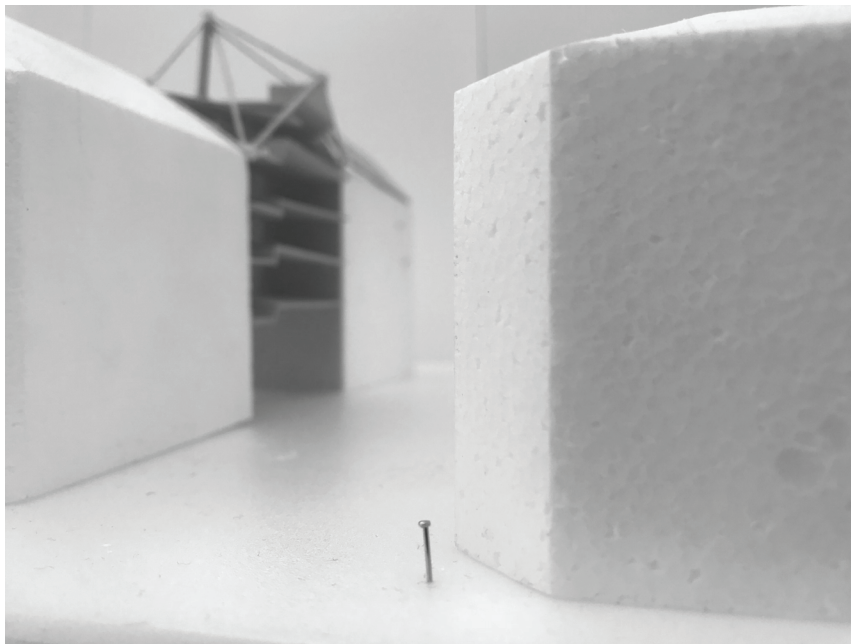


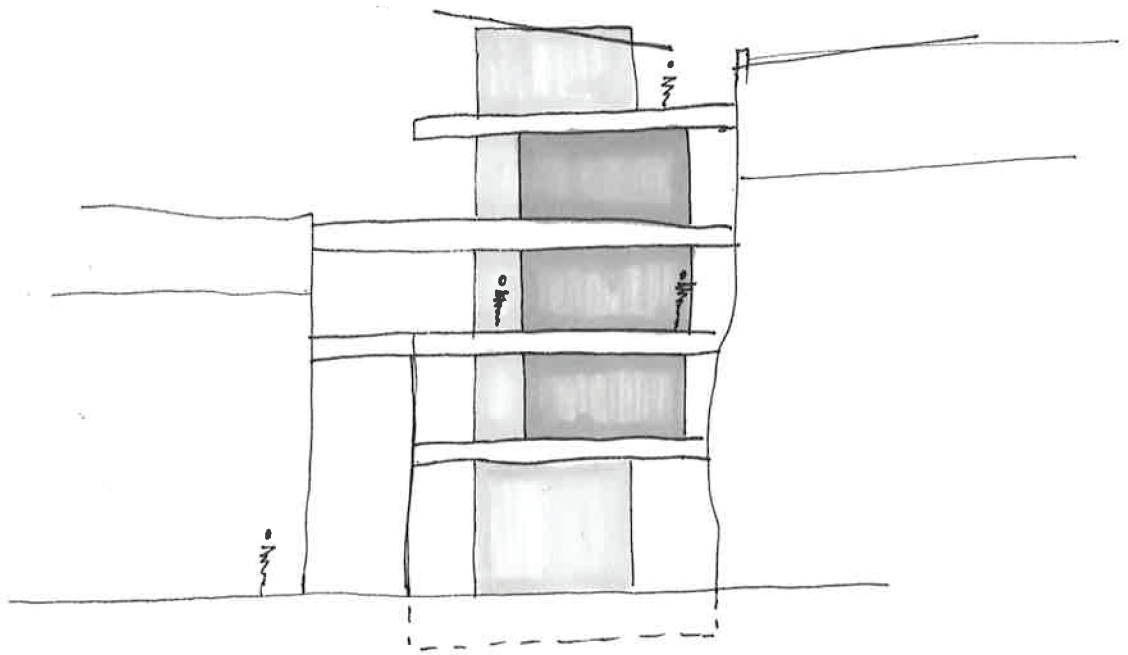
Snitt BB
1:200

Long section showing a proposed pitch in the roof to work as a communication between the existing roofs

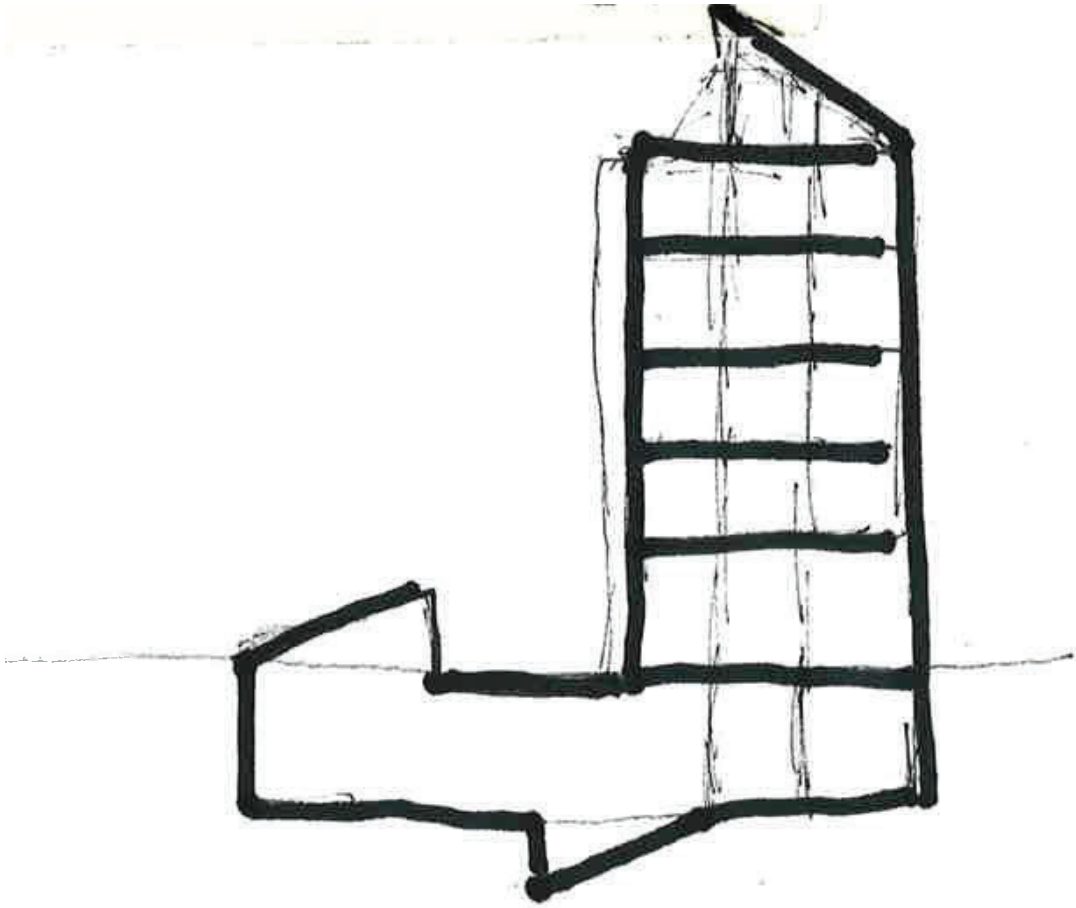


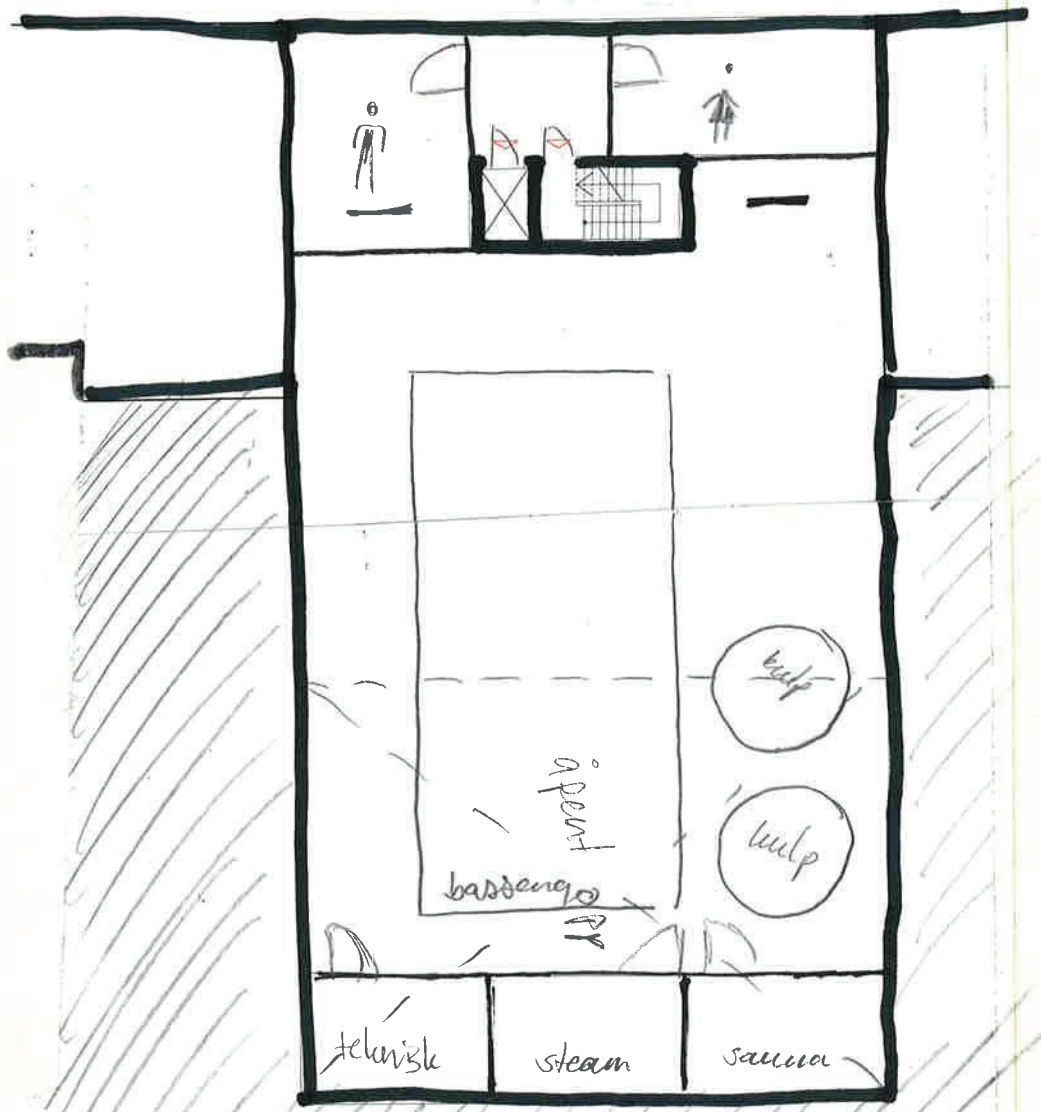
Situation model



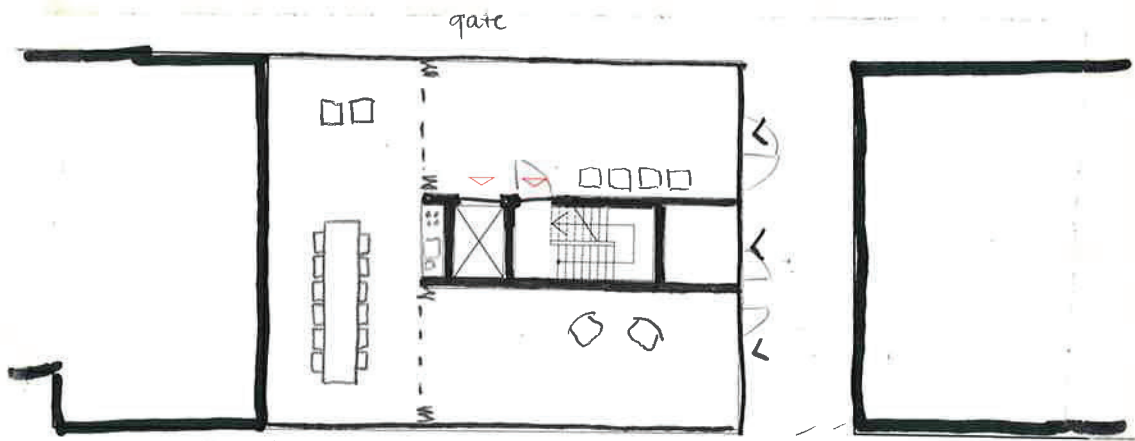


Trying to work further with a central core
Moving bath to a separate volume, creating a general open ground floor for multi purpose use.

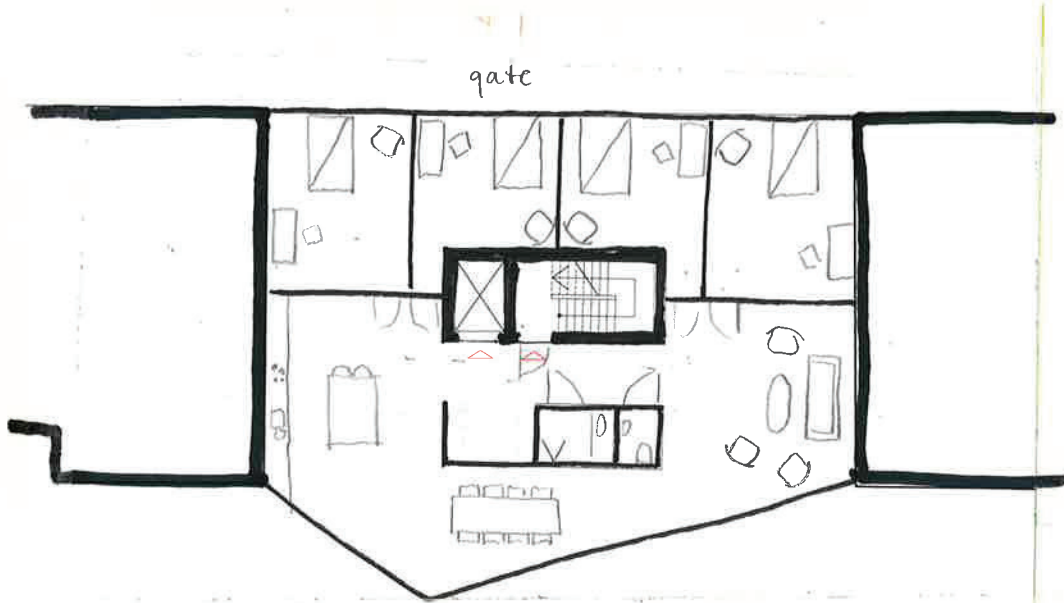




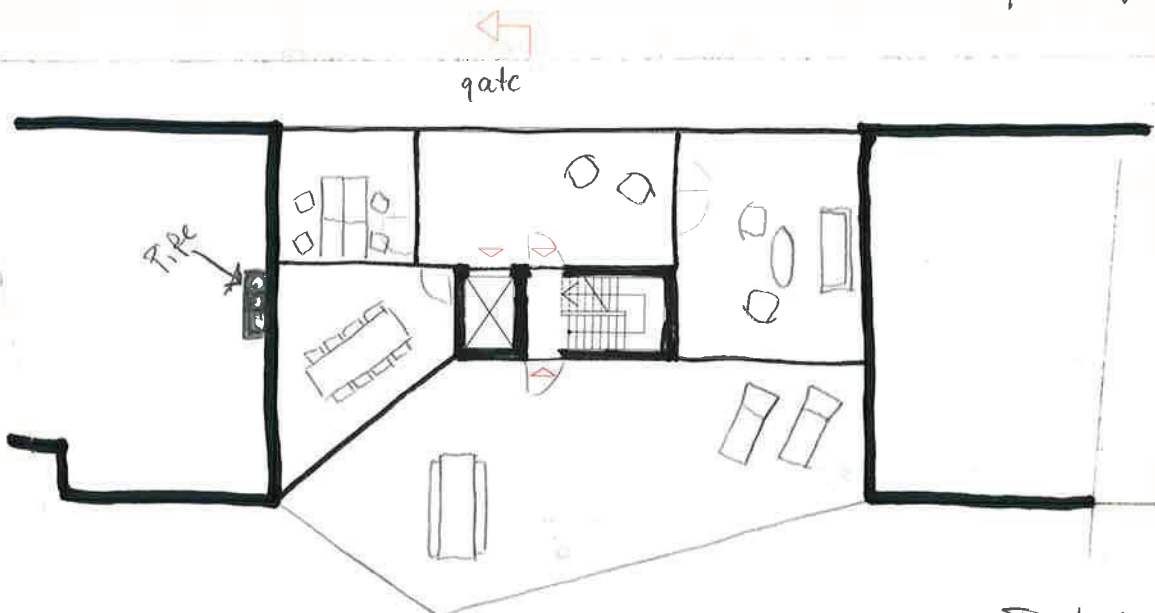
Kjeller /
Bad 1200



gateplan 1:200



Typisk plan 1:200

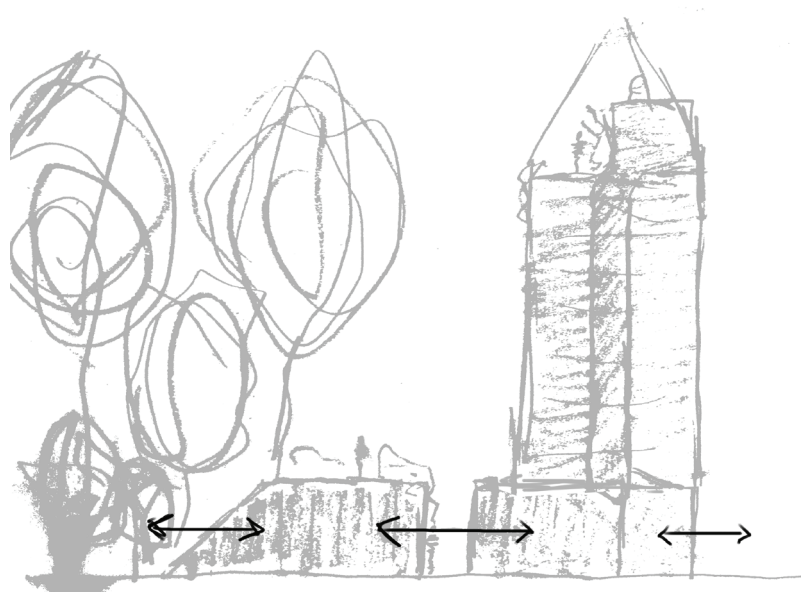


Taleplan 1:200

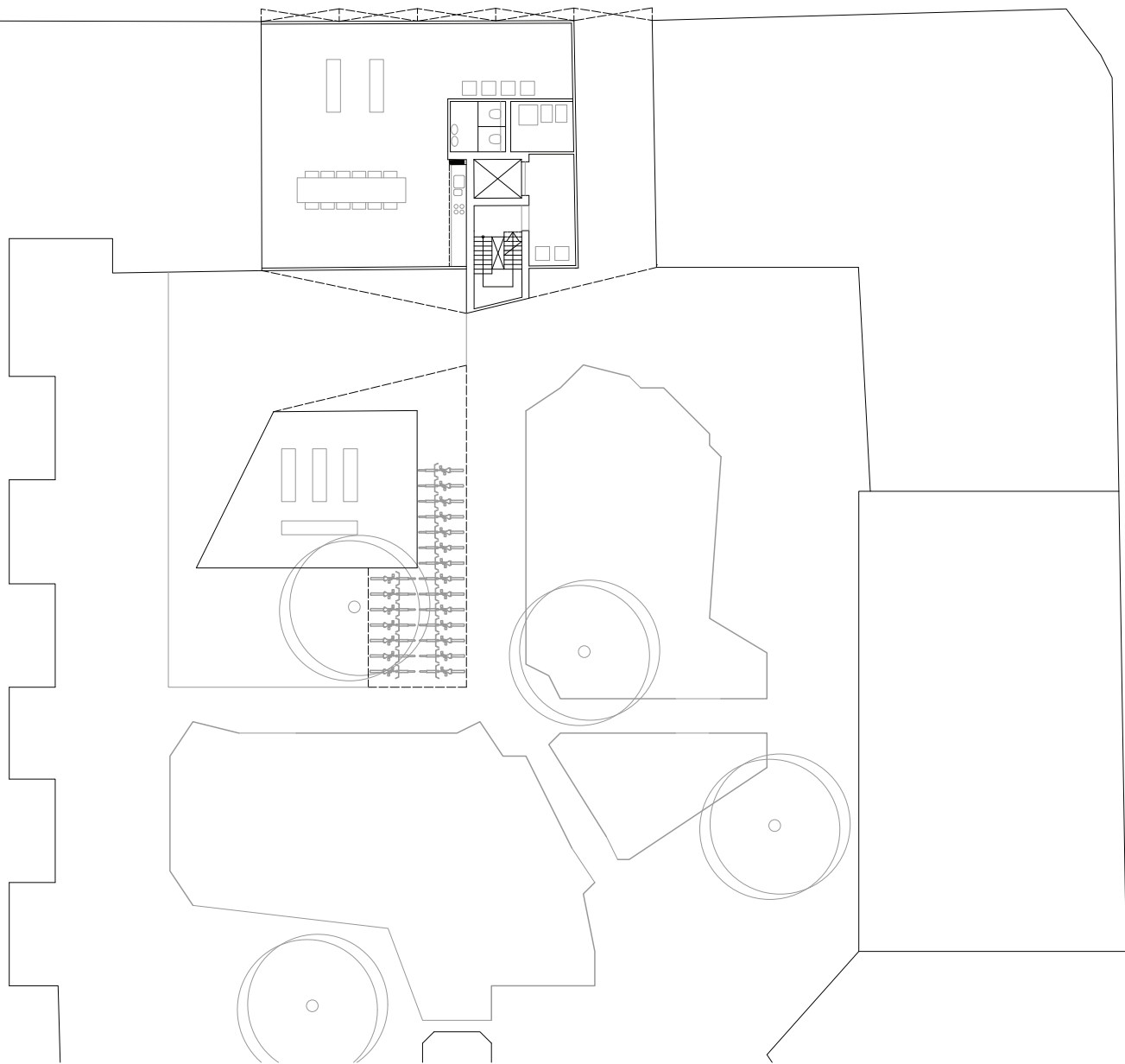
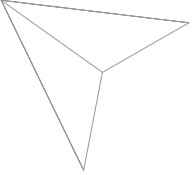


Stephen "kill your darlings" King

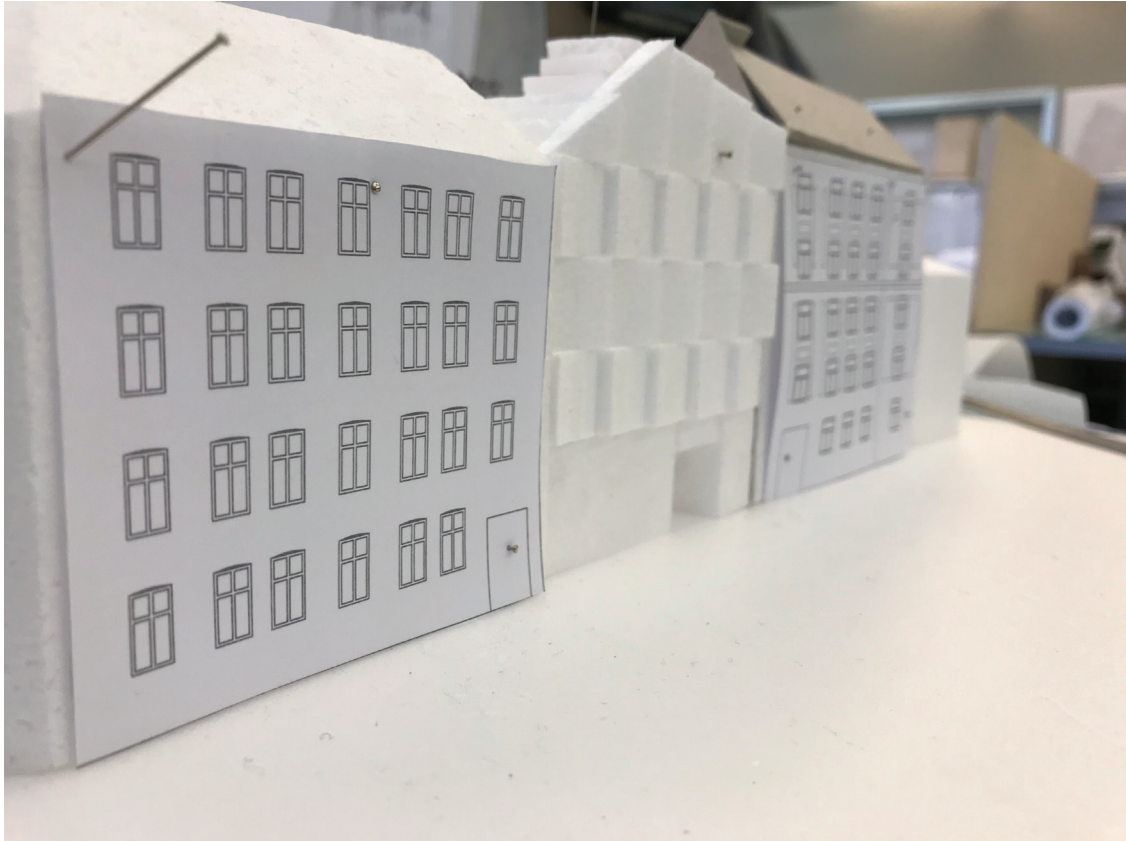
At this point, I took a step back to see what the project had become versus my initial interests. I saw that the common programme i wanted to connect the neighbourhood had become a massive and very expensive spa that most likely would not have been much used, at least not as a community-builder and friendship-maker as the initial intent with the common programme was. I took a round (or 289) with myself and my supervisors and decided to kill a darling. The bath is from this point not a part of the common programme. I will instead focus on spaces that are needed and that brings life to the courtyard.



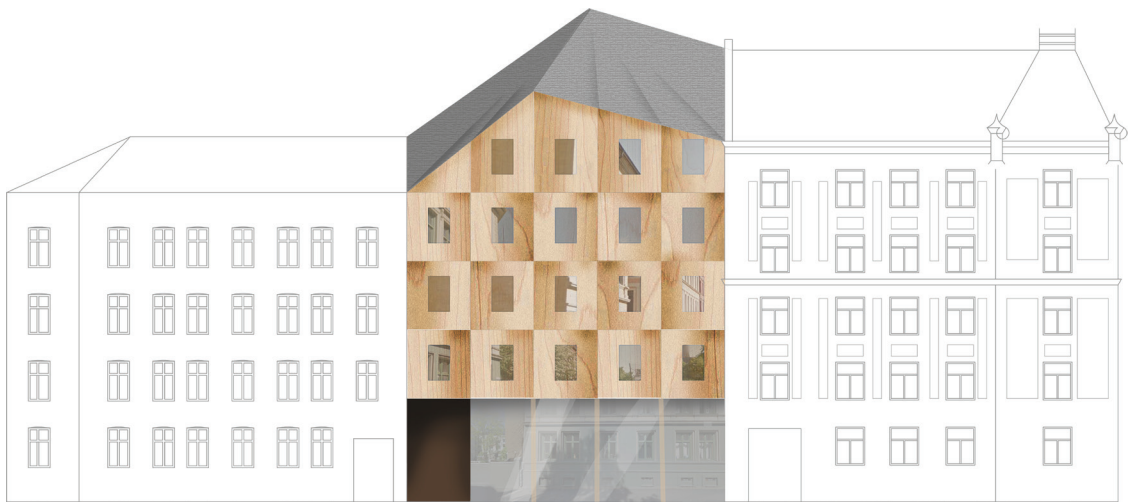
Re-connecting with the idea that the common brings people together. Generating life, which again generates more life

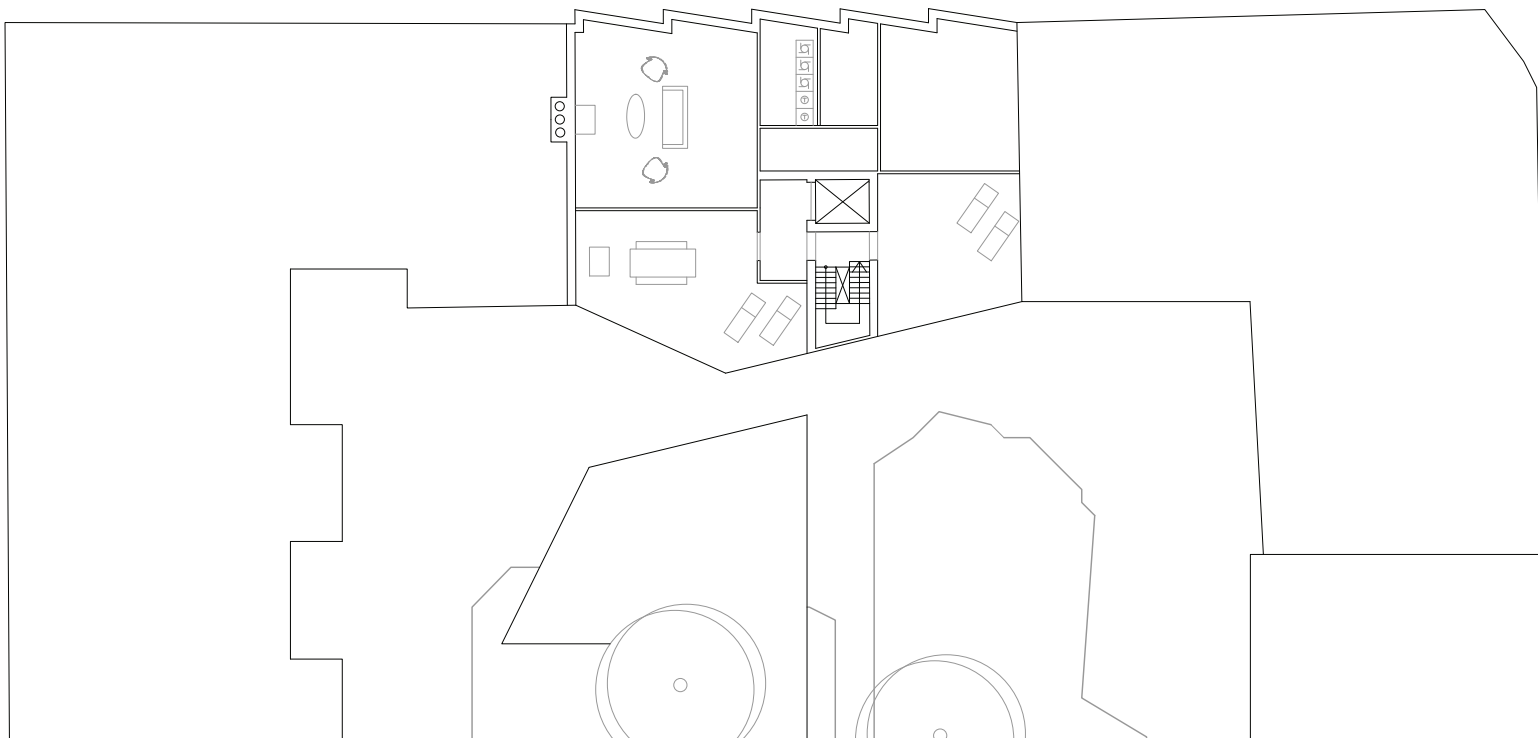
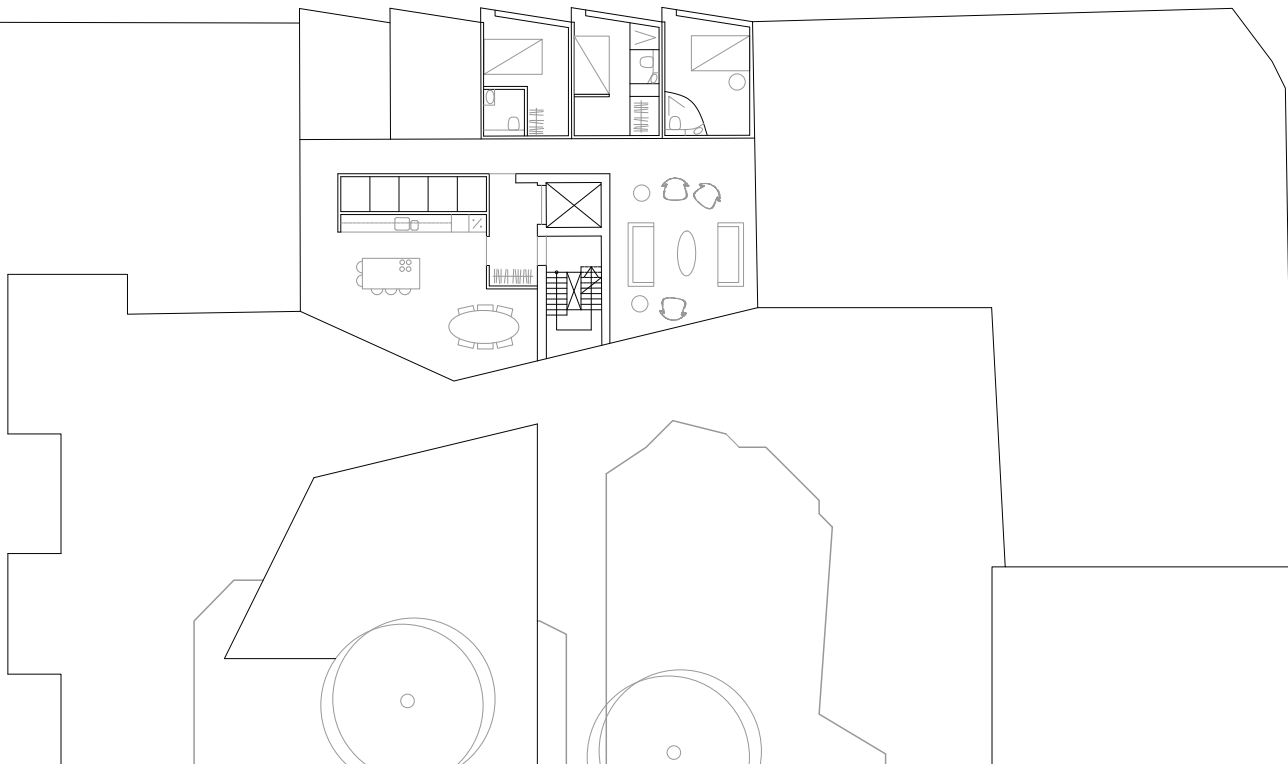
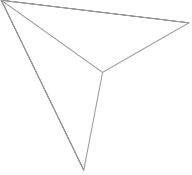


Focusing on what the block may need and use, a ground floor with a general space for small or bigger gatherings, a workshop and a deck

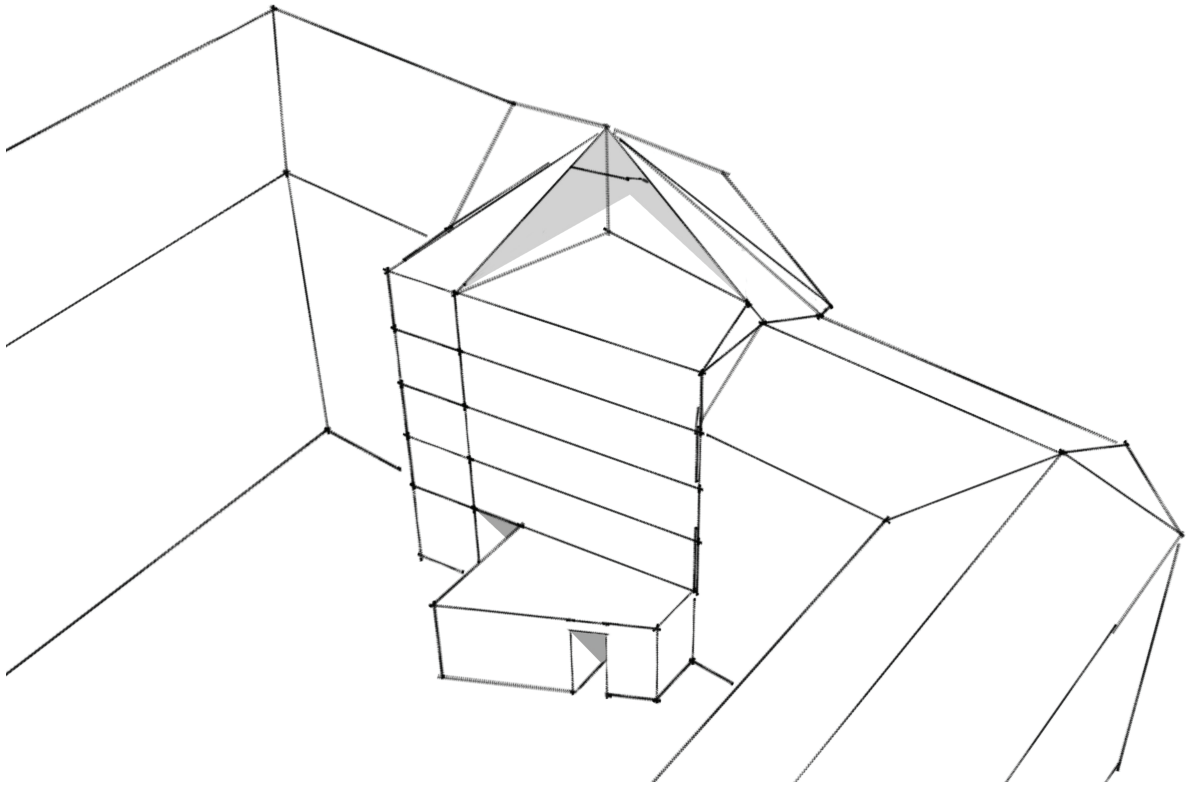


A jagged elevation in the street is my translation of the ornamentics in the two adjacent facades

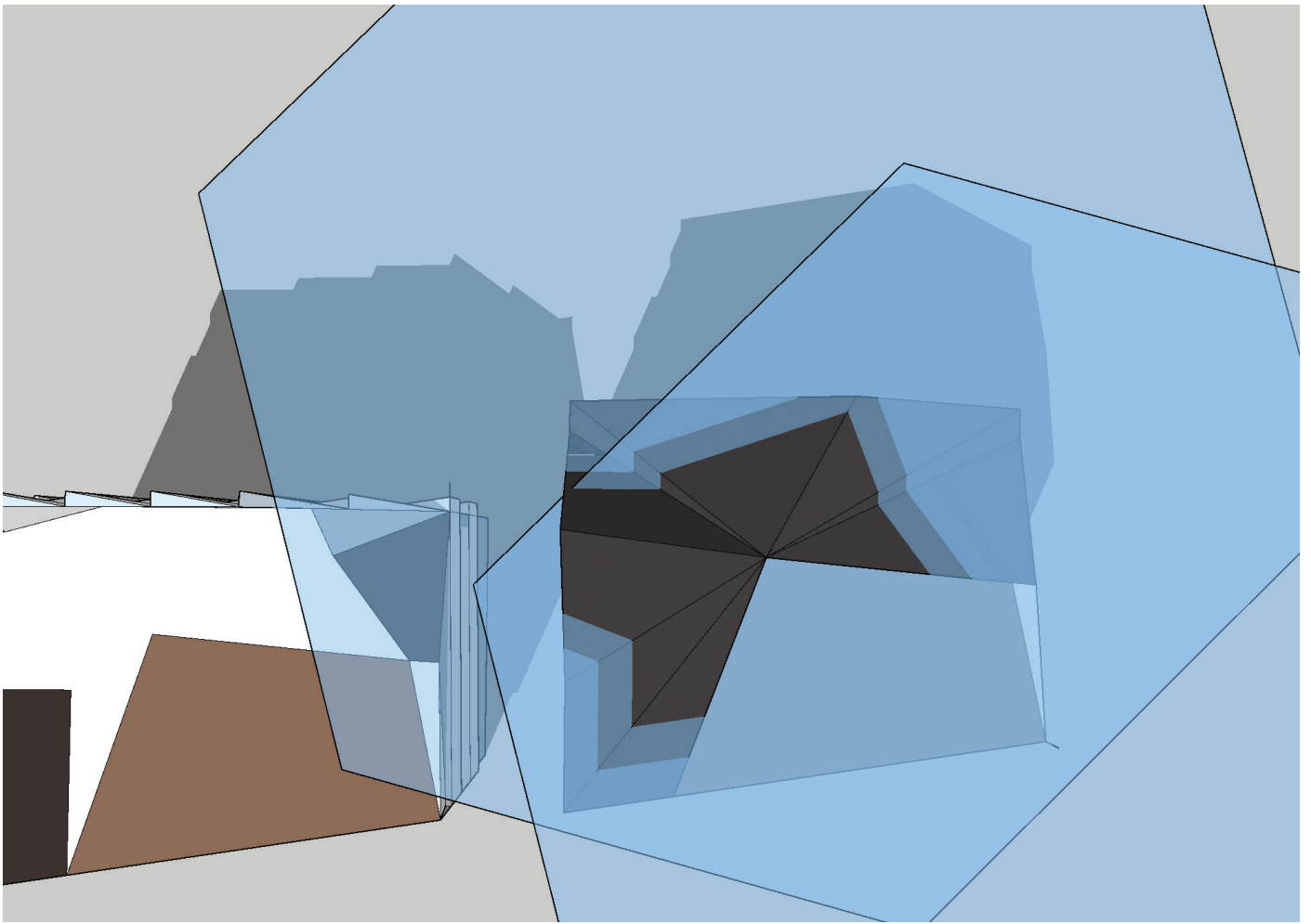




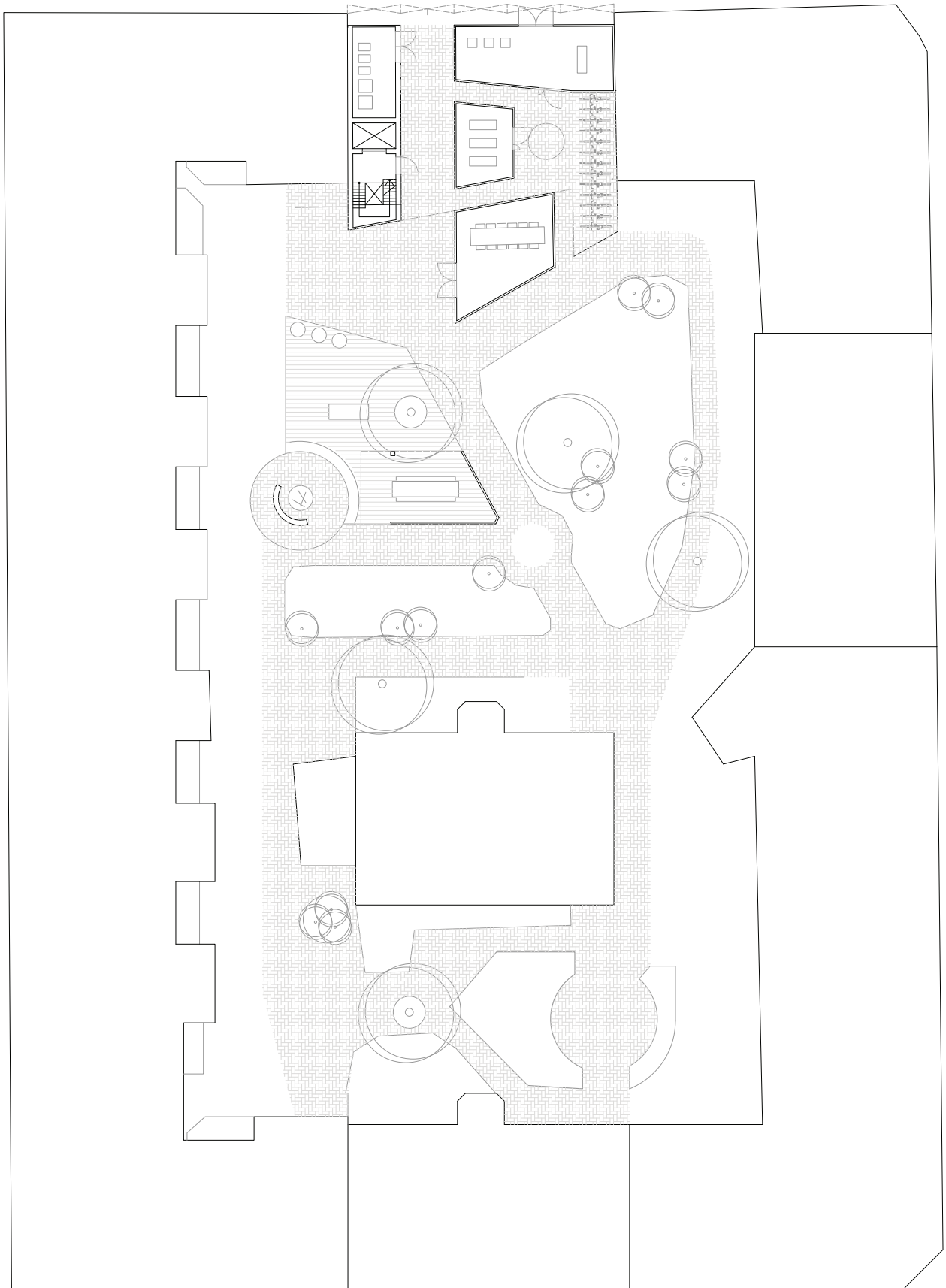
Typical plan and roof plan



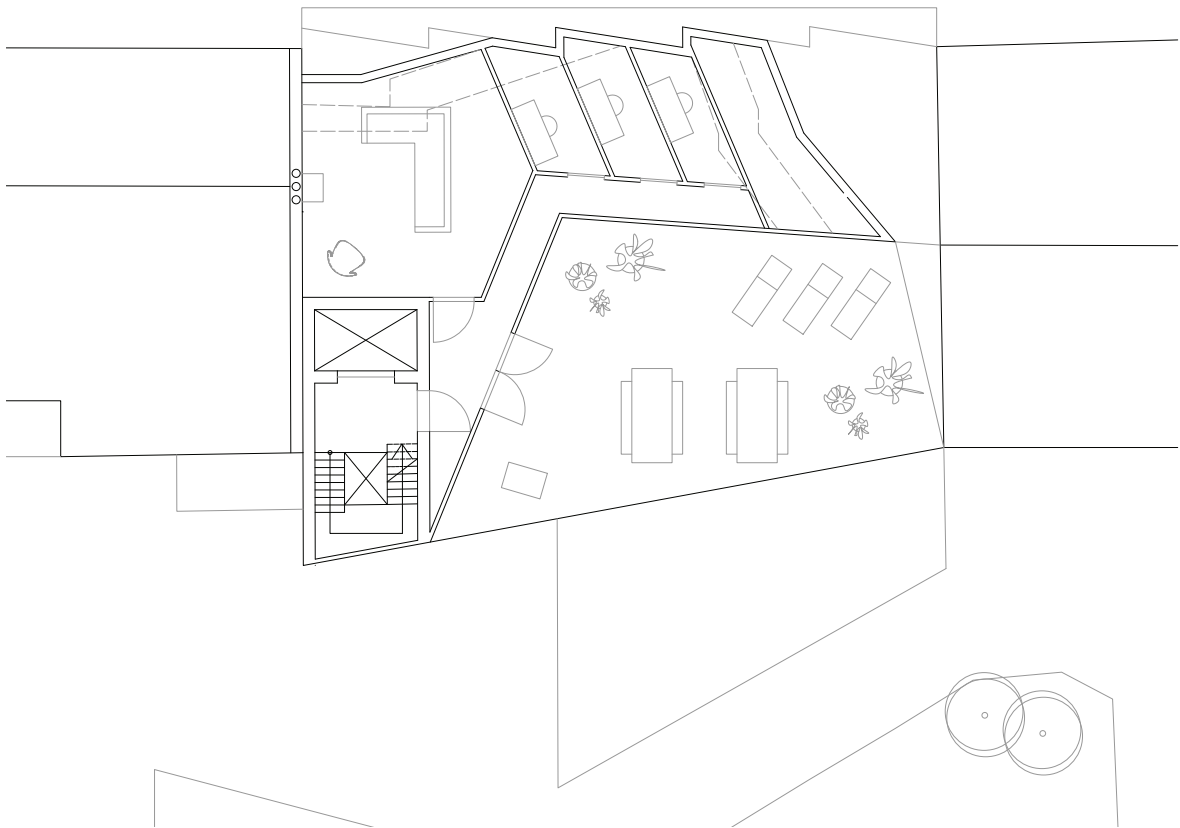
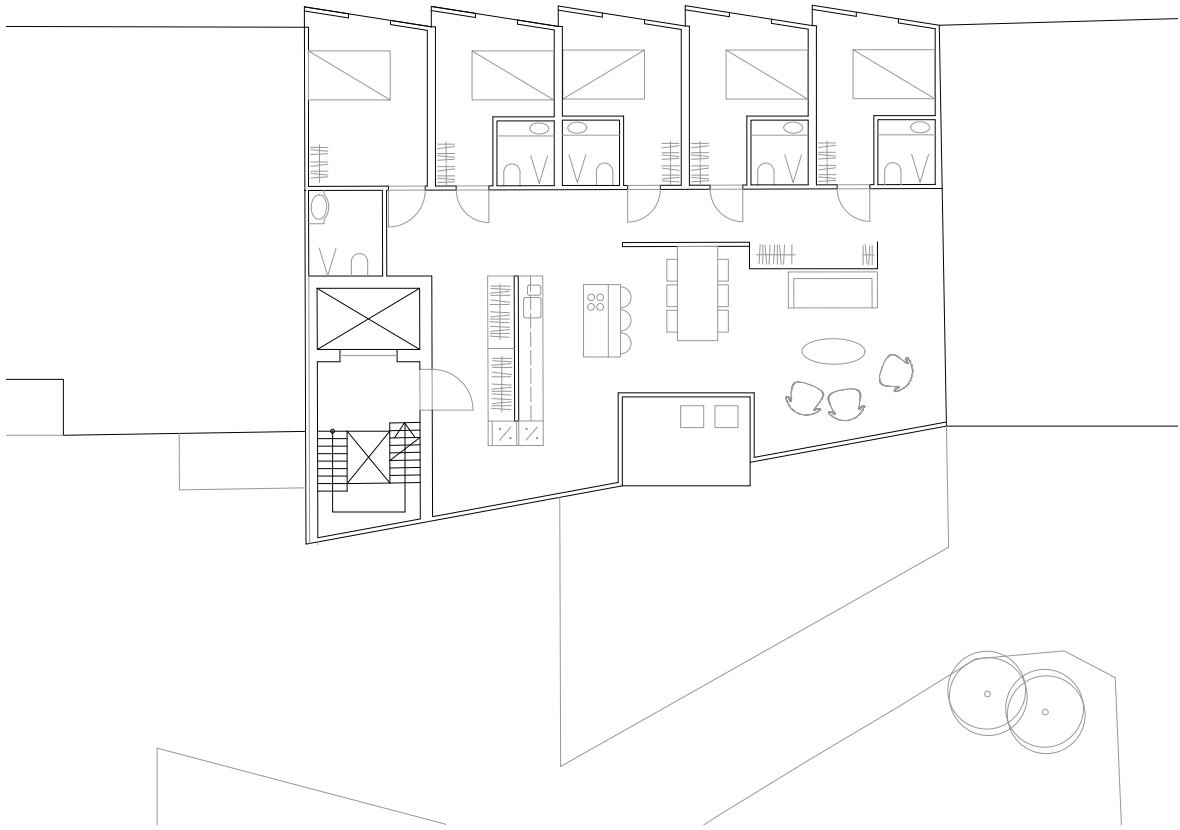
Maximizing sunlight conditions on the roof terrace and figuring out roof geometry



Exploring geometry in roof and what will happen in plan. Both equally important.

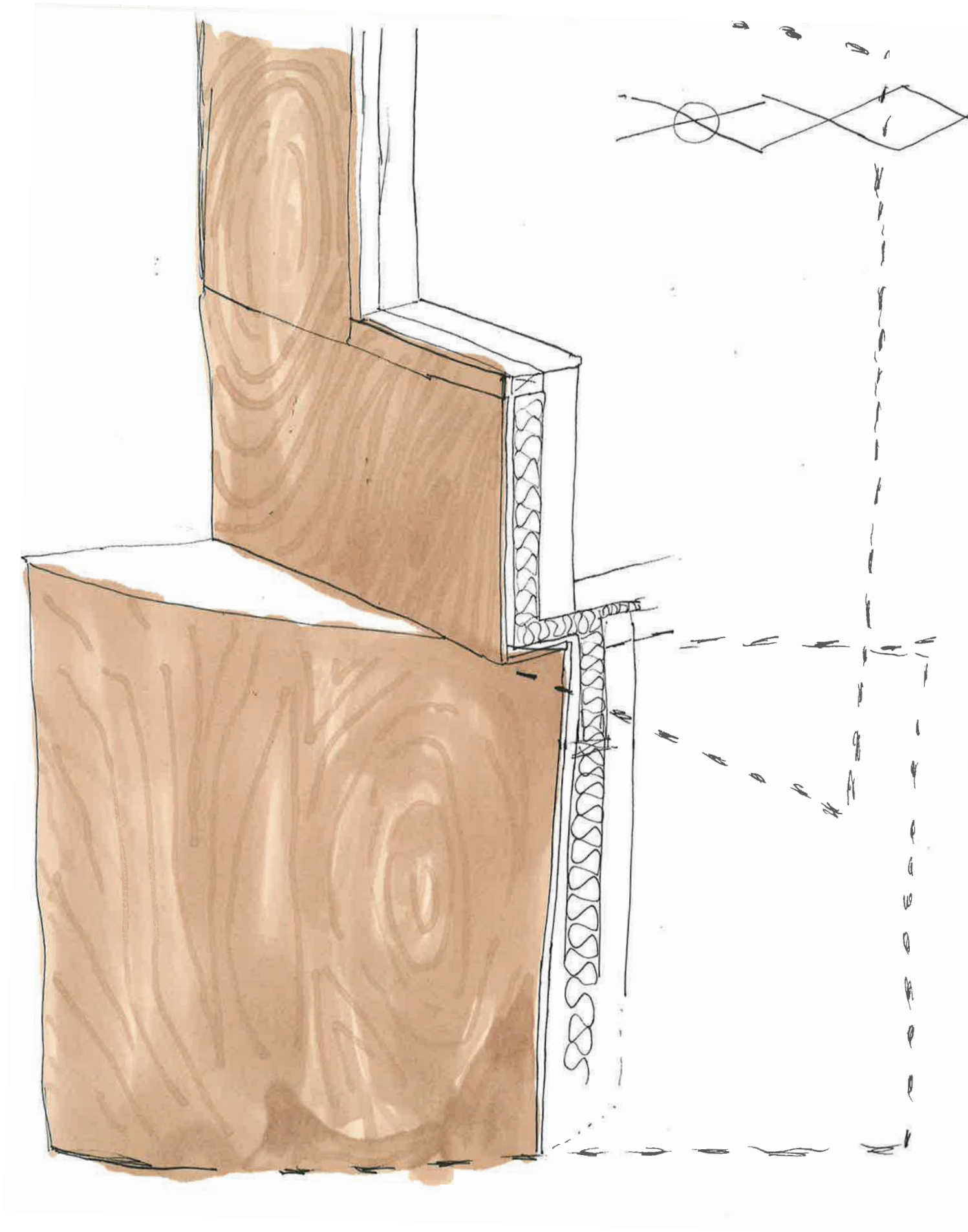


Turning a focus to the entire courtyard, splitting up the ground floor of project to create spaces with low threshold to take into use. connecting the garden and ground floor of my project to emphasize the common programmes. Moving the passageway to better use the upper floors and splitting the entrance for the student house, making the common truly common.

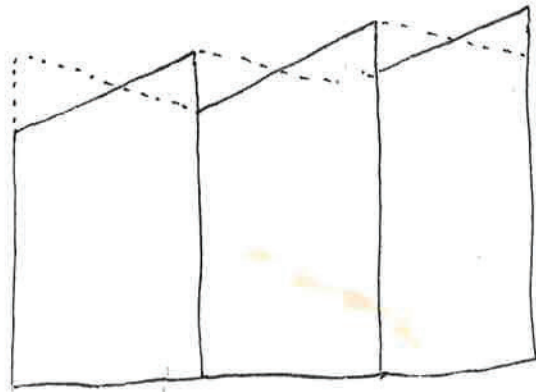


Typical plan and Roof plan

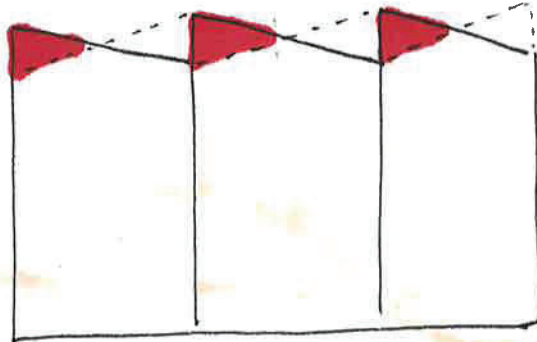




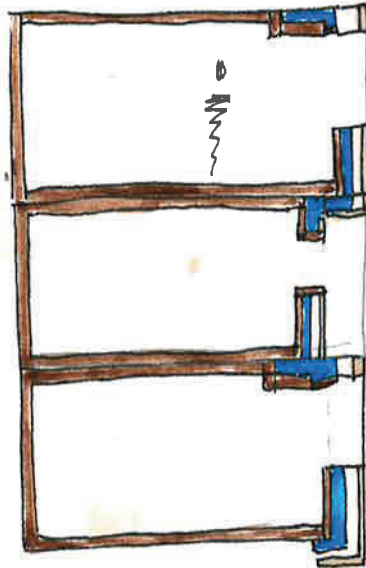
Detail explorations in the street facade.



A

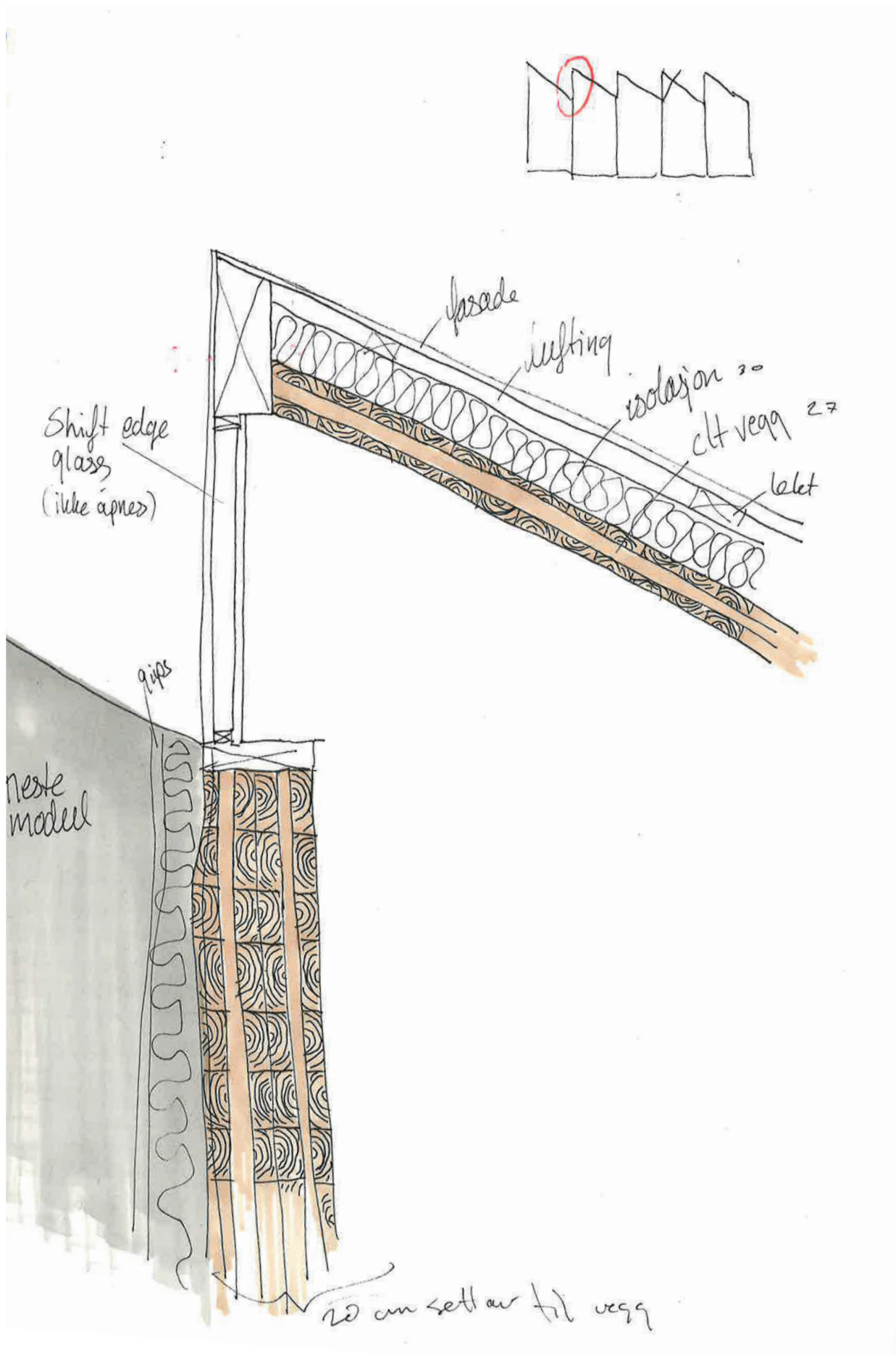


A

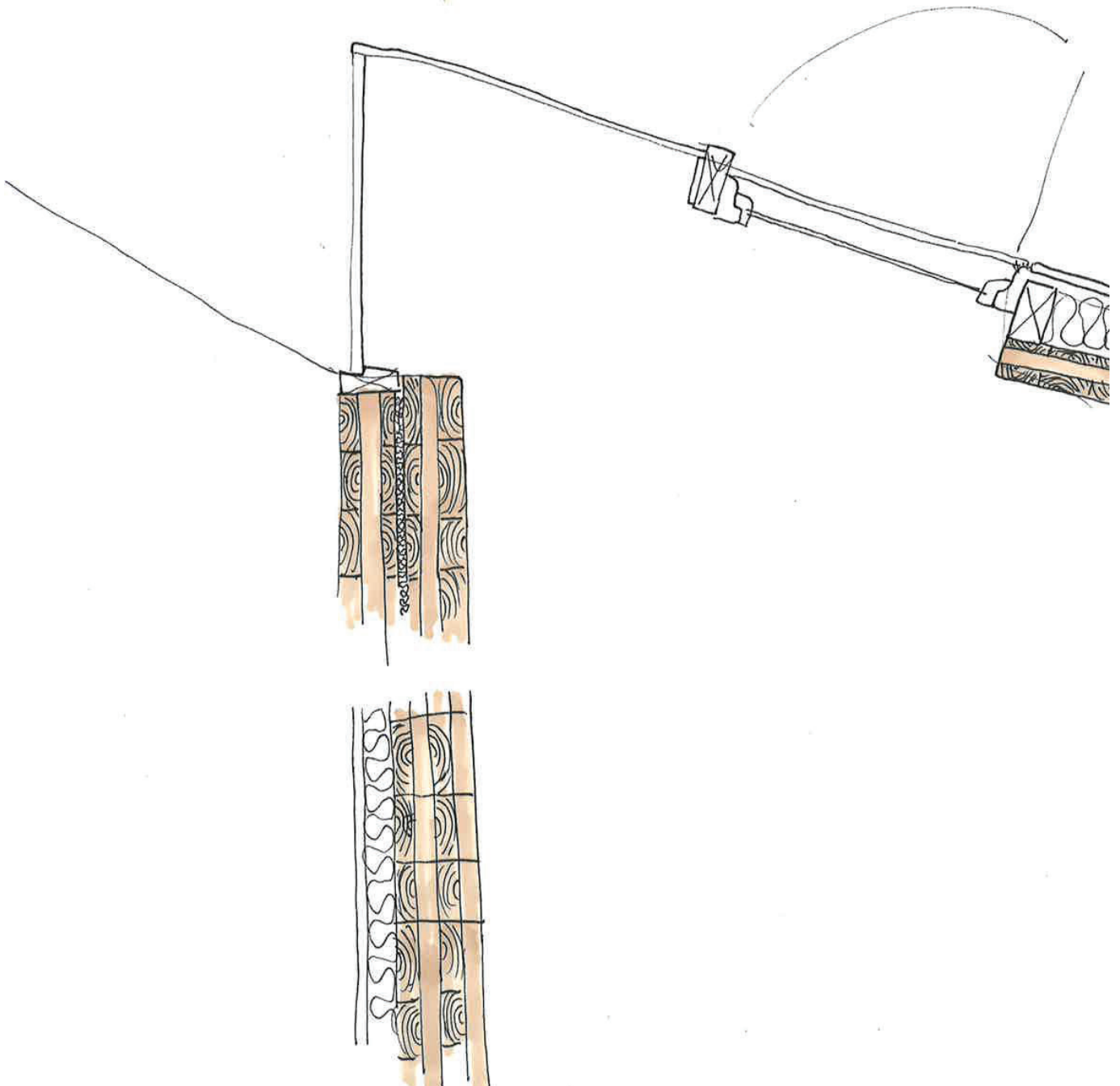
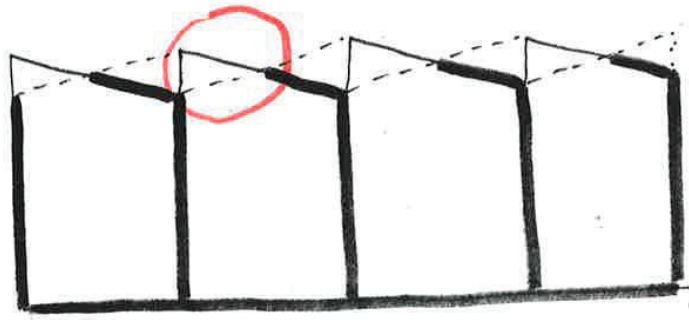


CLT
INSULATION
LIFTING
FRASIDE

Detail explorations in the street facade.



Detail explorations in the street facade.



Detail explorations in the street facade.

This is all i will share of the process. The final result can be seen in the exhibition and presentation.

- Une