

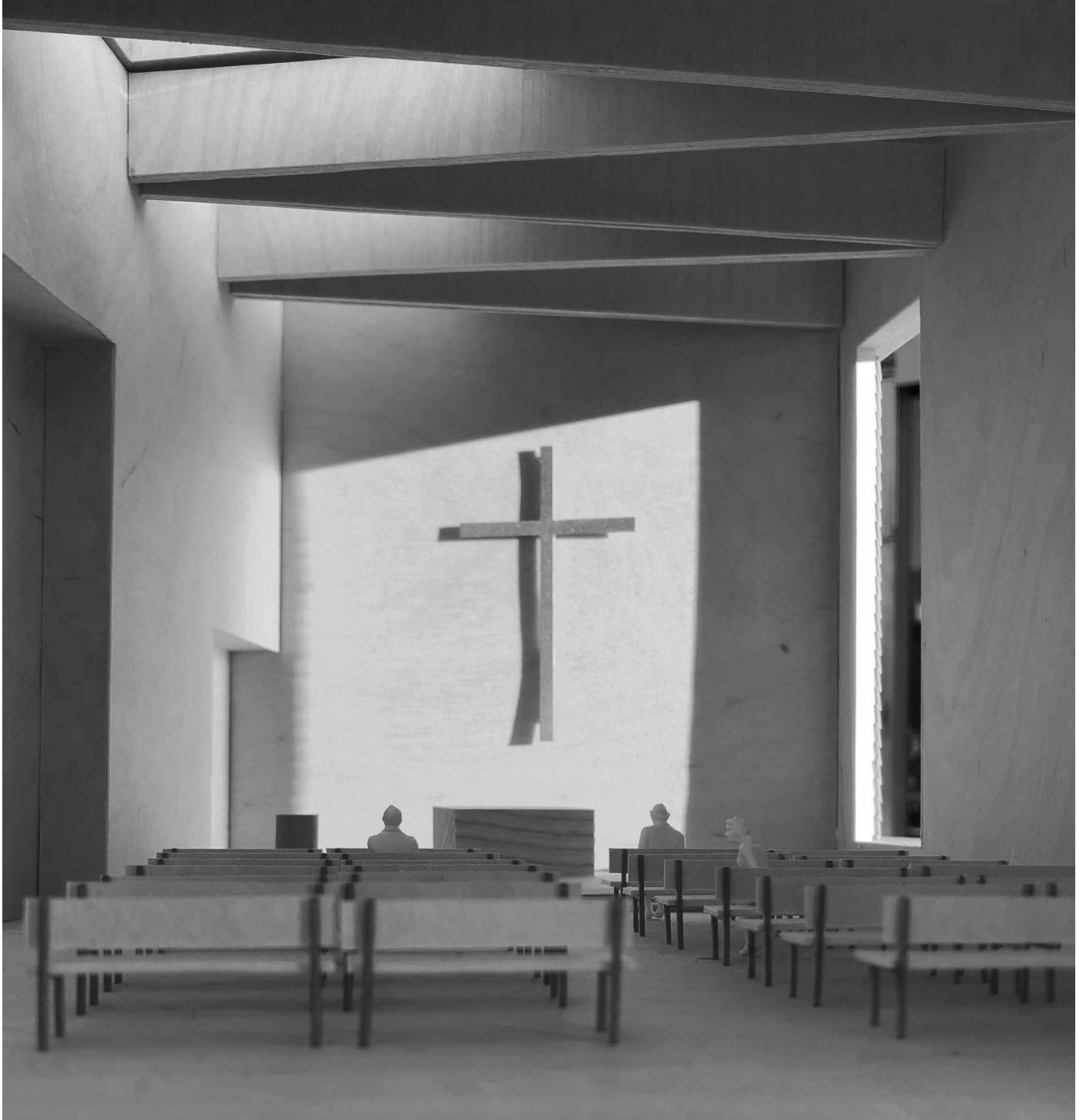
Church for the deaf

Censors booklet

Diploma

Maja A. Osberg

F18



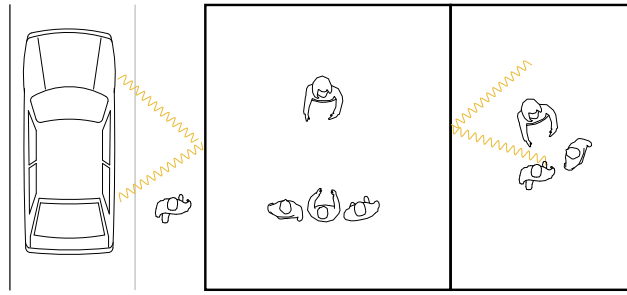
1. Introduction
2. Site
3. Process
4. Project
5. Details

1. Introduction

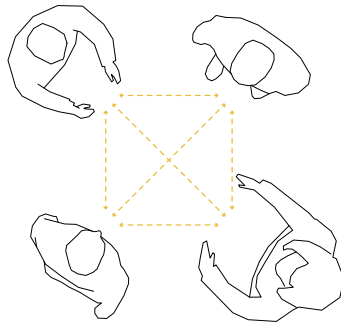
The deaf church is an important part of the deaf community in Norway. A place for deaf and hearing impaired with their families to meet each other. The deaf church in Norway is growing. A lot has changed since the last deaf church was built in 1989. Deaf schools are closed, as deaf and hearing impaired are integrated in the “hearing” schools. It is therefore even more important that they have a place to gather that is designed for their needs.

Deafness is defined as total or near total inability to hear. According to Norges Døveforbund (Norway’s deaf association) there are 5 000 deaf people in Norway, and about 700 000 people with hearing loss.

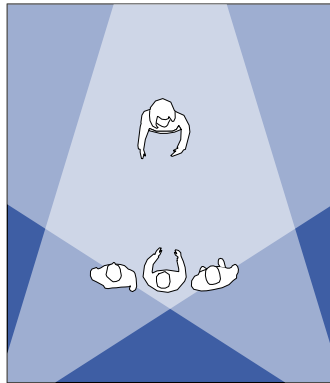
Using the DeafSpace concepts as guidelines, I wanted to create a deaf church that can adapt to different spatial needs and still be a good space for deaf and hearing impaired. Looking at the qualities that comes from designing for the deaf instead of viewing their needs as extra work. And how these qualities can benefit others.



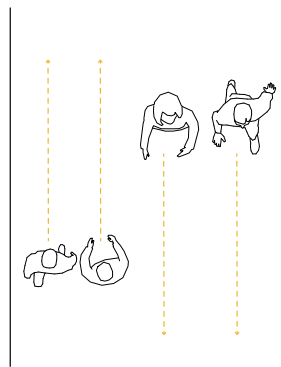
Acoustics



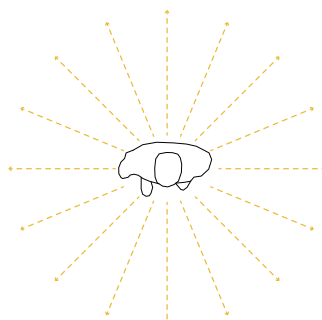
Space and proximity



Light and color



Mobility and proximity



Sensory reach

The Deaf Church in Norway has existed since the 1890s. The ministry in Oslo got its own church in 1894, an existing church for hearing people. Today the Deaf church has eight congregations around the country. The churches in Trondheim, Oslo and Bergen are the only churches built specifically for the deaf church. Trondheim deaf church from 1927, Oslo deaf church from 1974 and Bergen deaf church from 1989. The other congregations either use existing churches or share with a “hearing” congregation. The services in The deaf churches are in Norwegian sign language. They use sign poetry, dance and sign choirs.



The deaf churches in Norway

2. Site



Borgenveien 5, 0370 Oslo
3100 m²

I chose the site because of its centrality and proximity to Diakonhjemmet. The deaf congregation in Oslo is the largest of the deaf congregations, and includes Oslo, Borg and Hamar diocese. Oslo is easily accessible to all and has the largest share of the members.

Diakonhjemmet is an independent foundation within The Church of Norway which works for the inclusion of different groups in society.





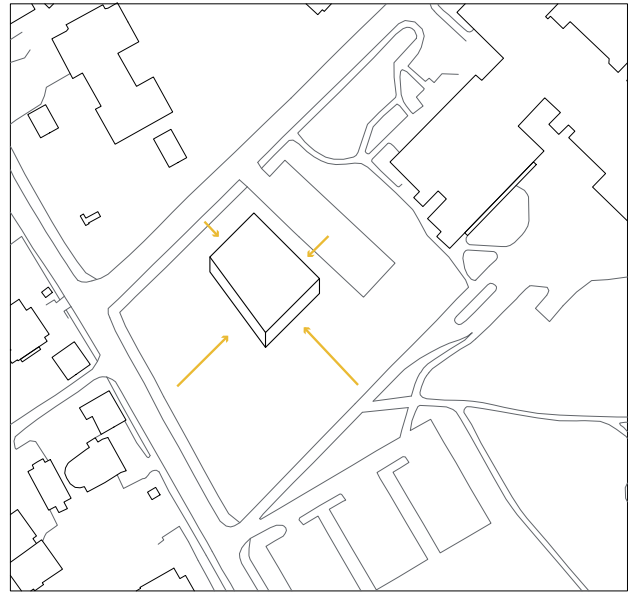


3. Process

The church room has the traditional east-west axis, with the choir towards east. Symbolizing that Christ is the light of the world. One moves from the dark into the light.



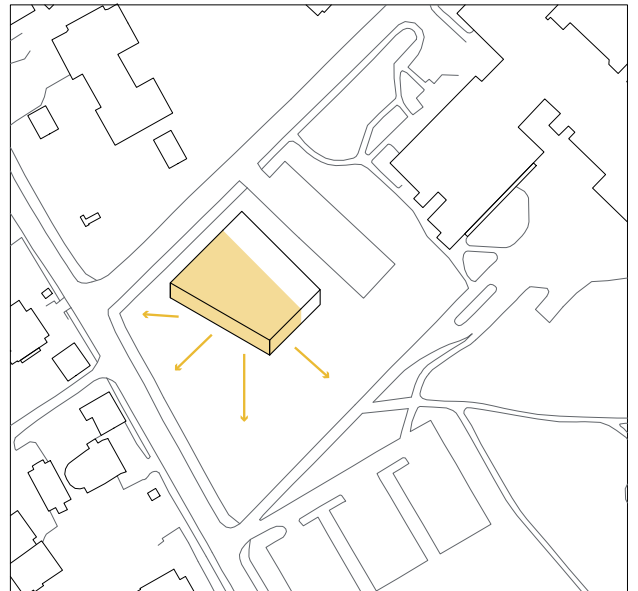
Traditional east-west axis



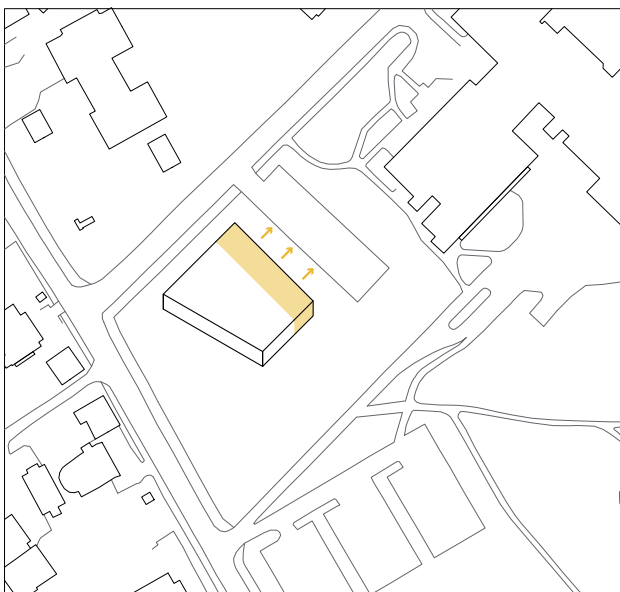
Following the directions of the plot



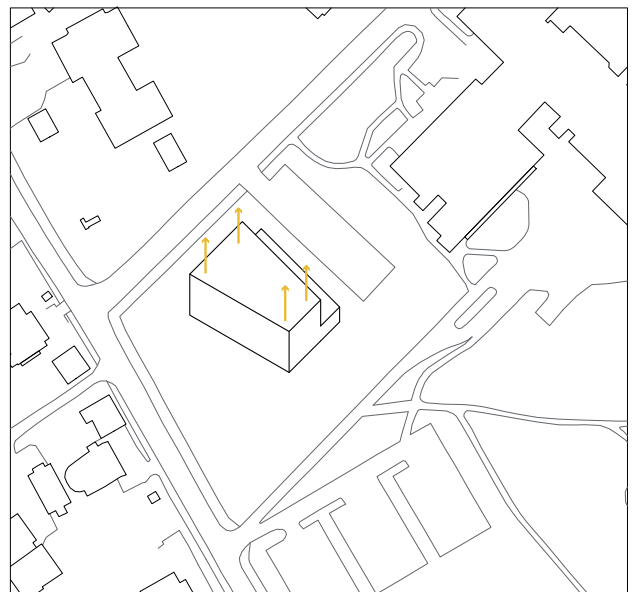
Combining the two to give the church its shape



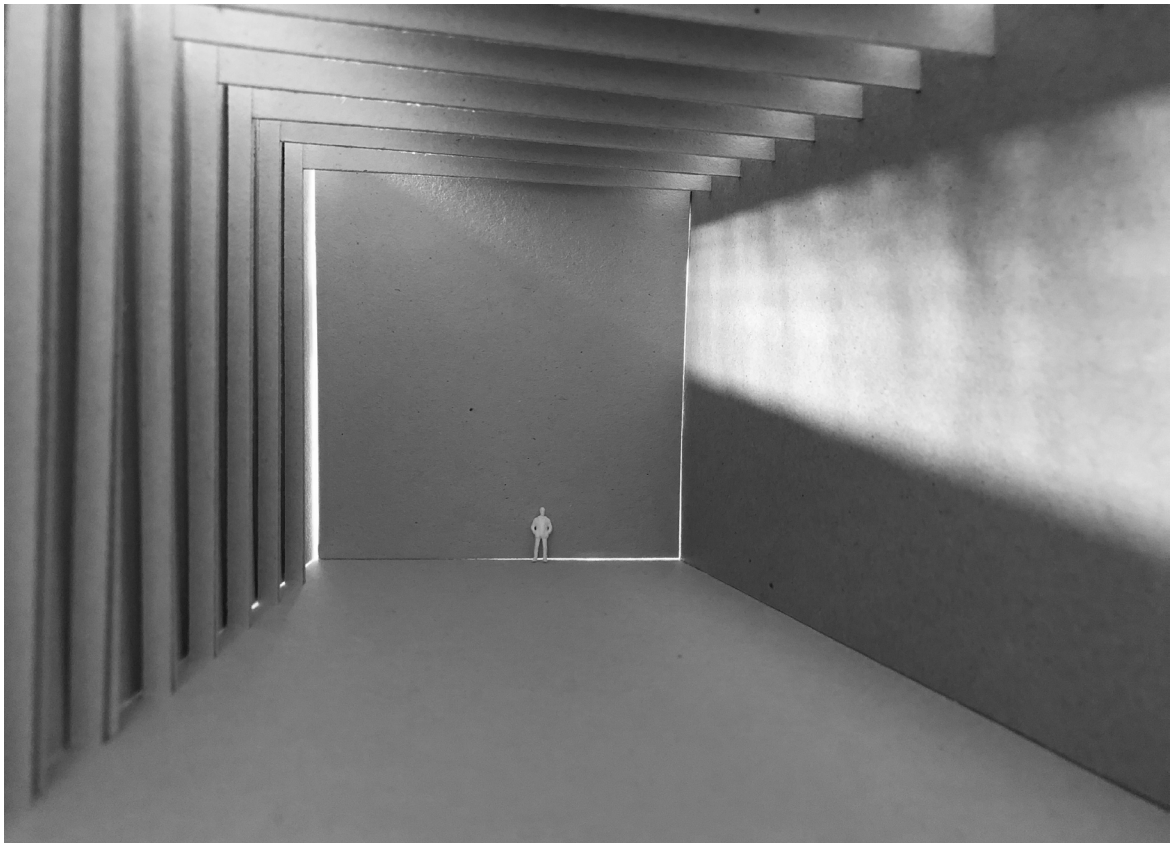
The church room and the congregation room face the park



Sacristy, office and other service rooms face the hospital



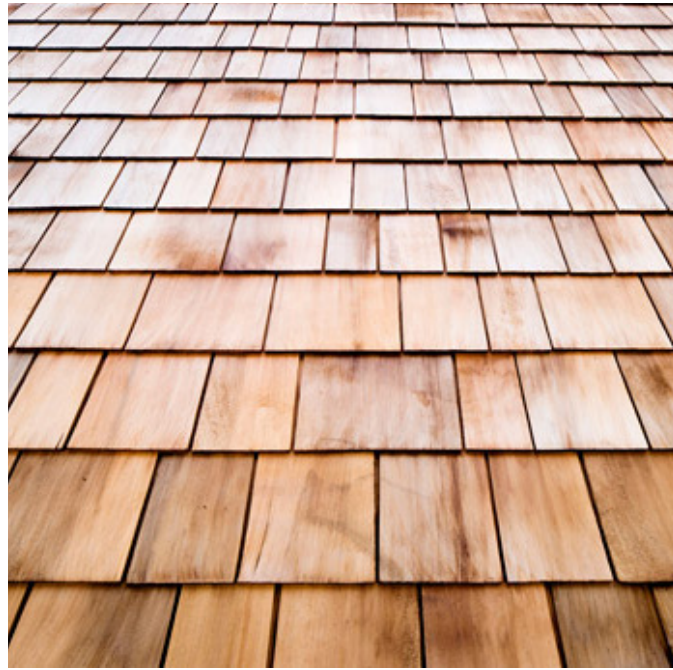
Giving the church room a greater ceiling height





4. Project

Inspired by the stave churches,
the facades are covered in
tar-stained wooden shingles.
Creating an experience when
you enter into a light wooden
interior.





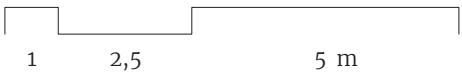
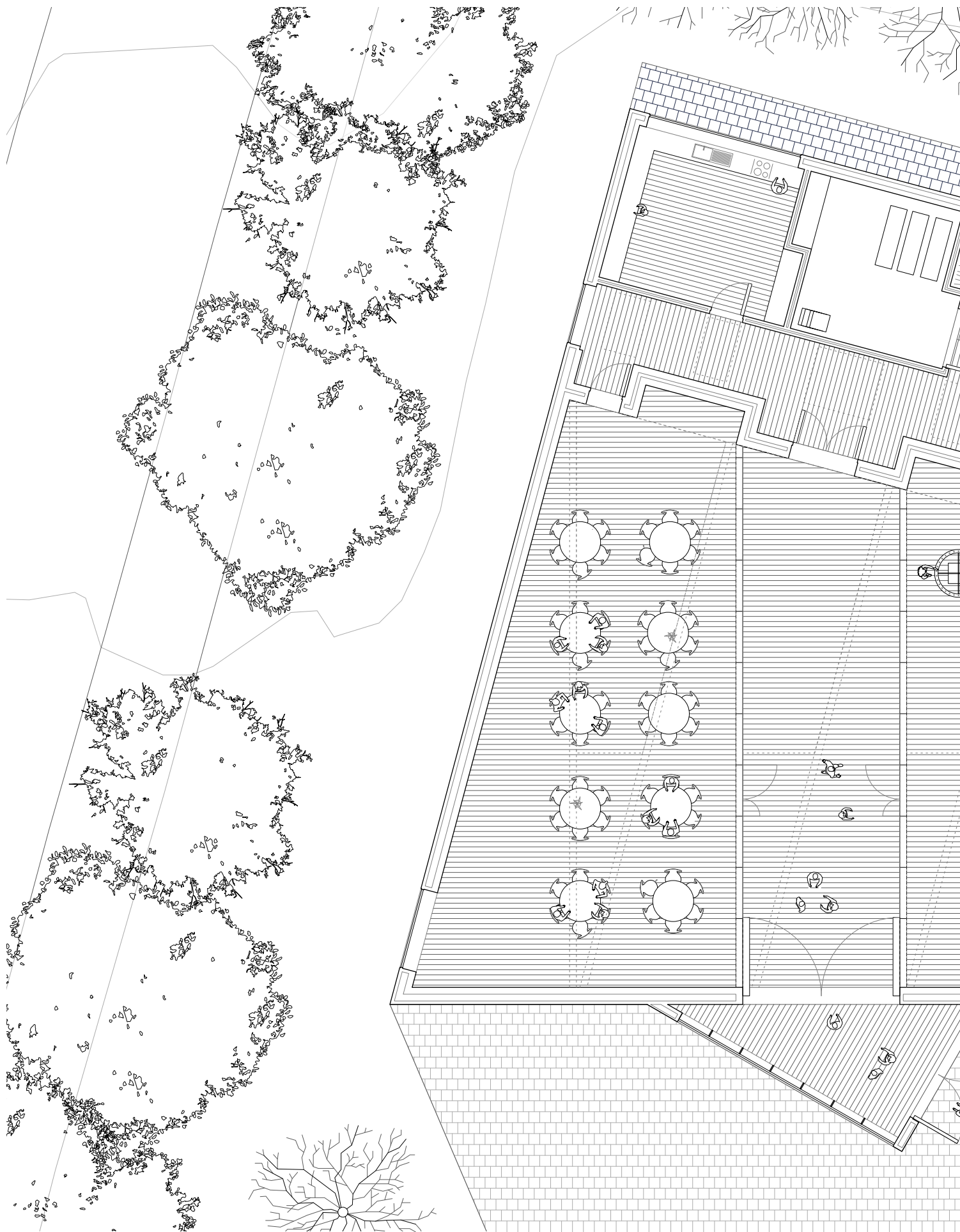
2,5 5 10 m

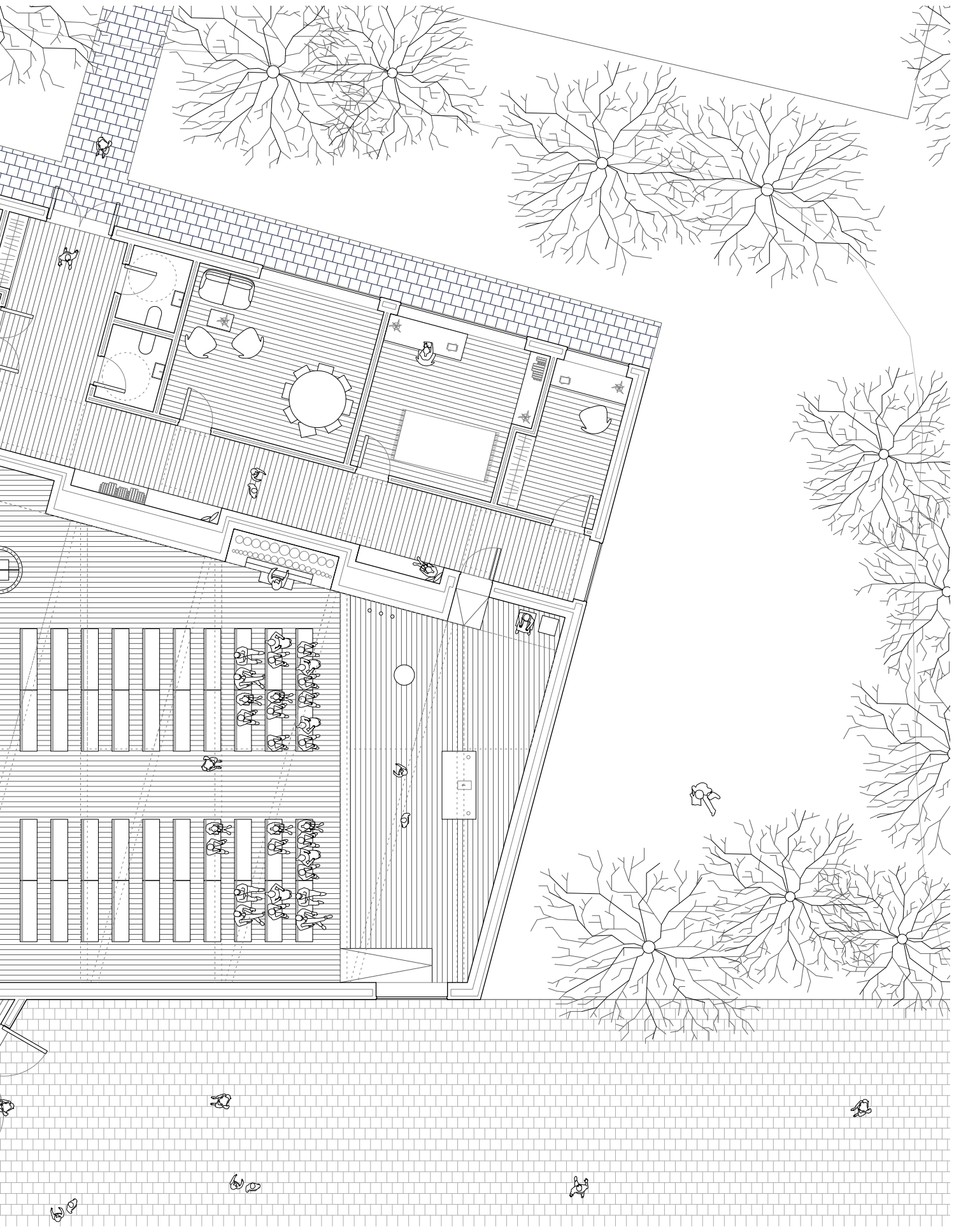
Site



Program
Nave and choir
Congregation room
Entrance
Kitchen
Vestry
Office
WC
Storage room

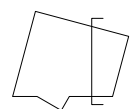


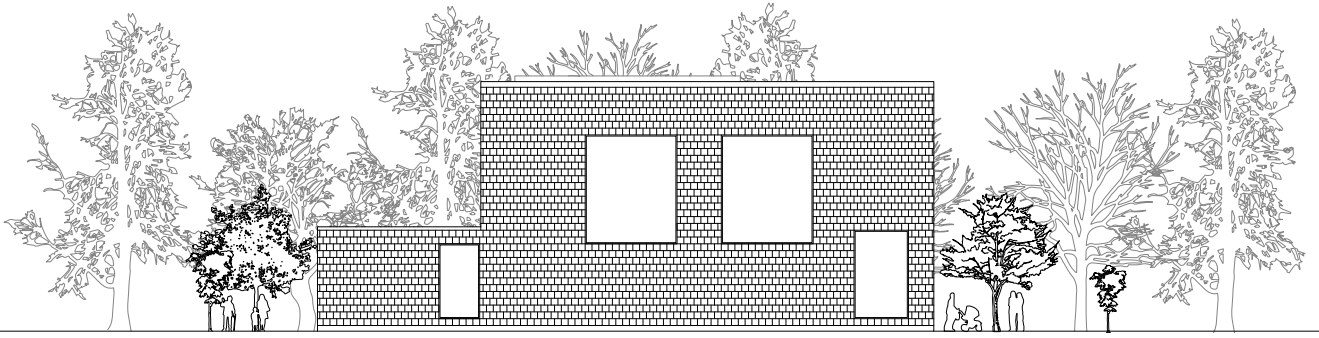




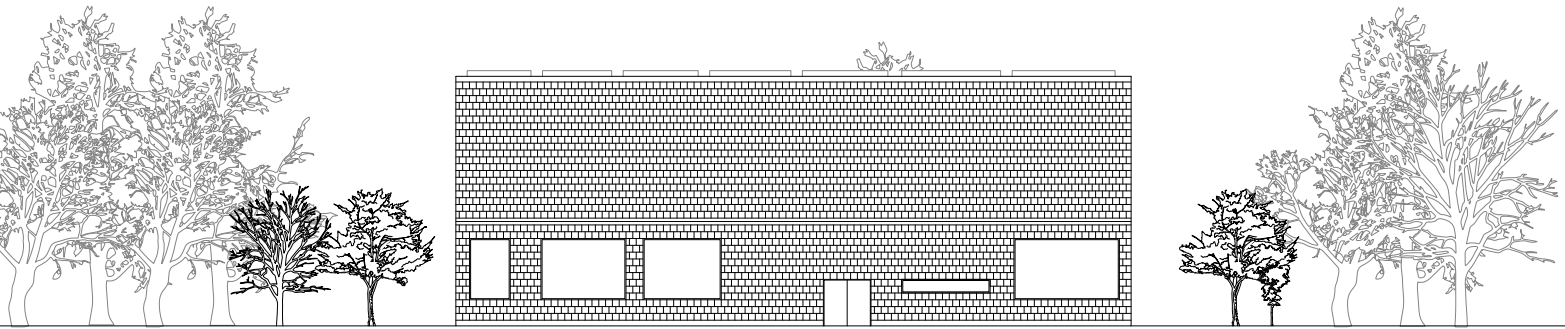


Section

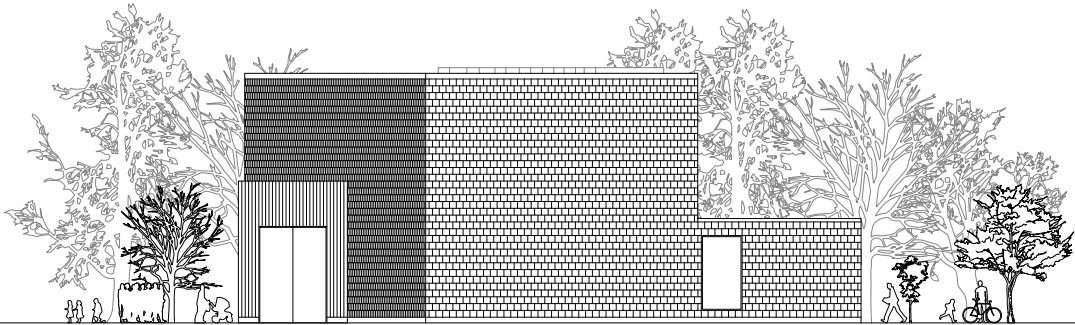




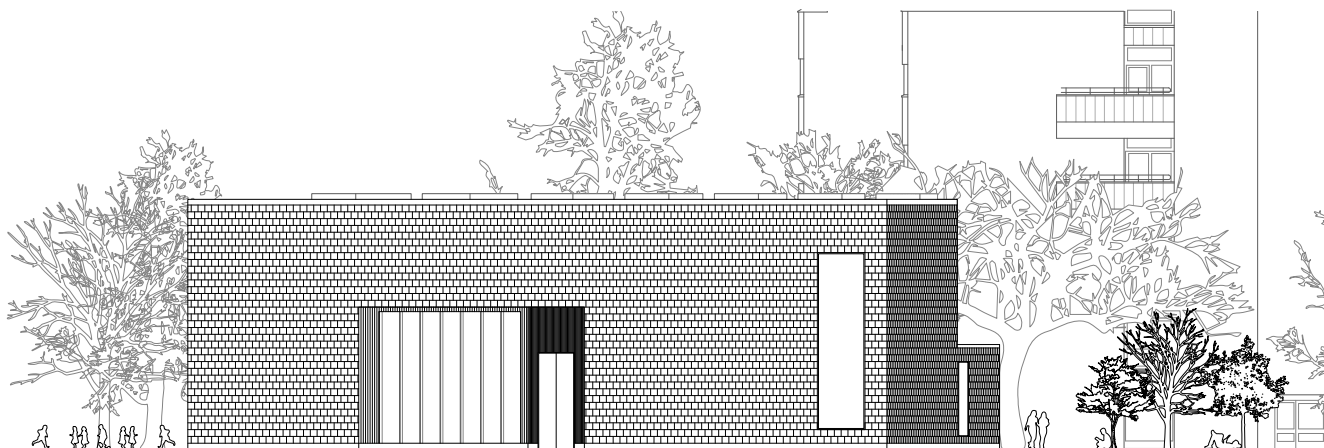
Elevation - west



Elevation - north

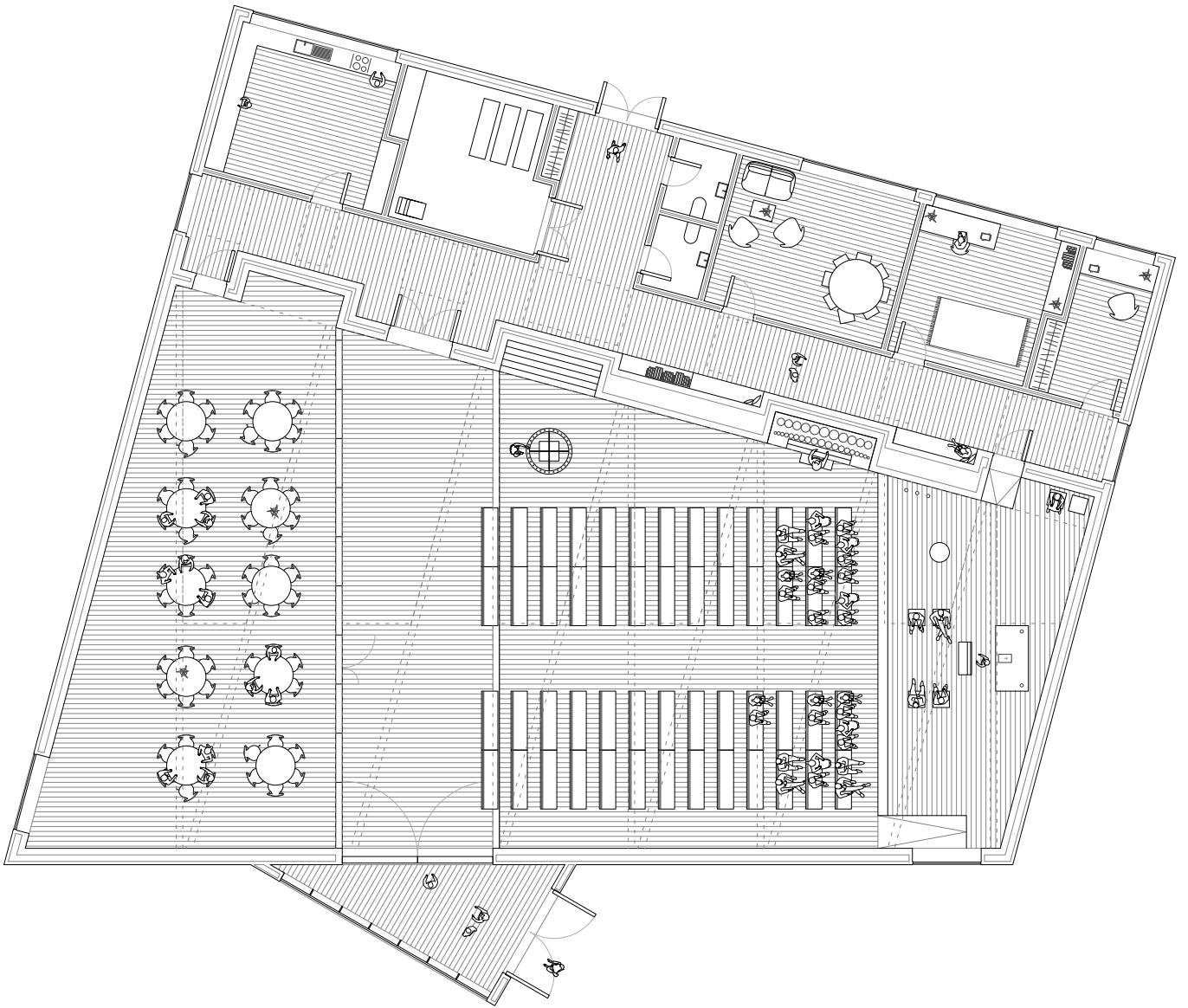


Elevation - south



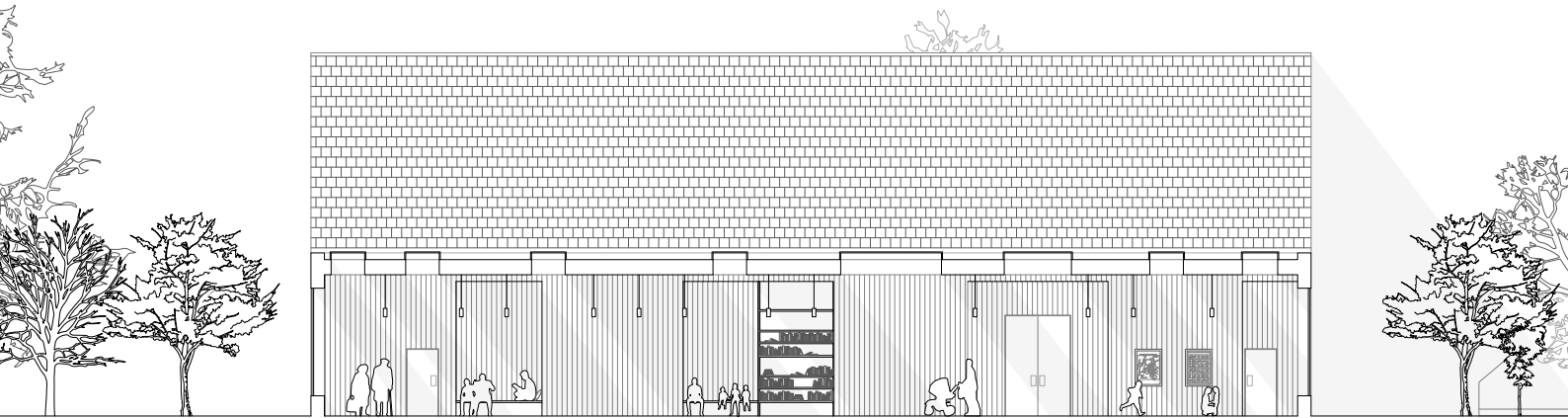
Elevation - east

1 2,5 5 m

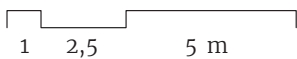
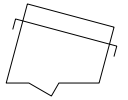


Plan - large church room

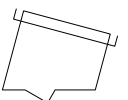


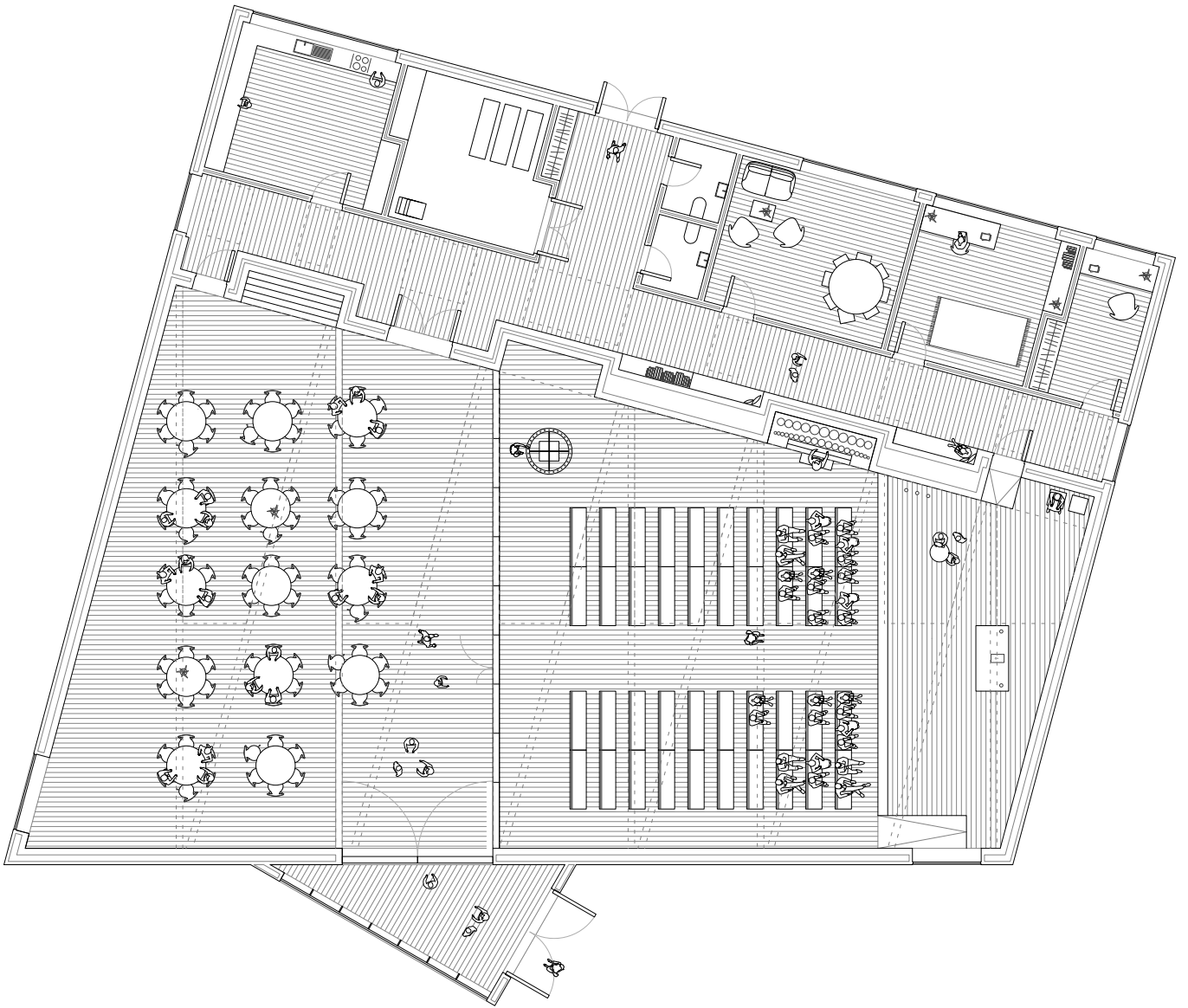


Section - hallway



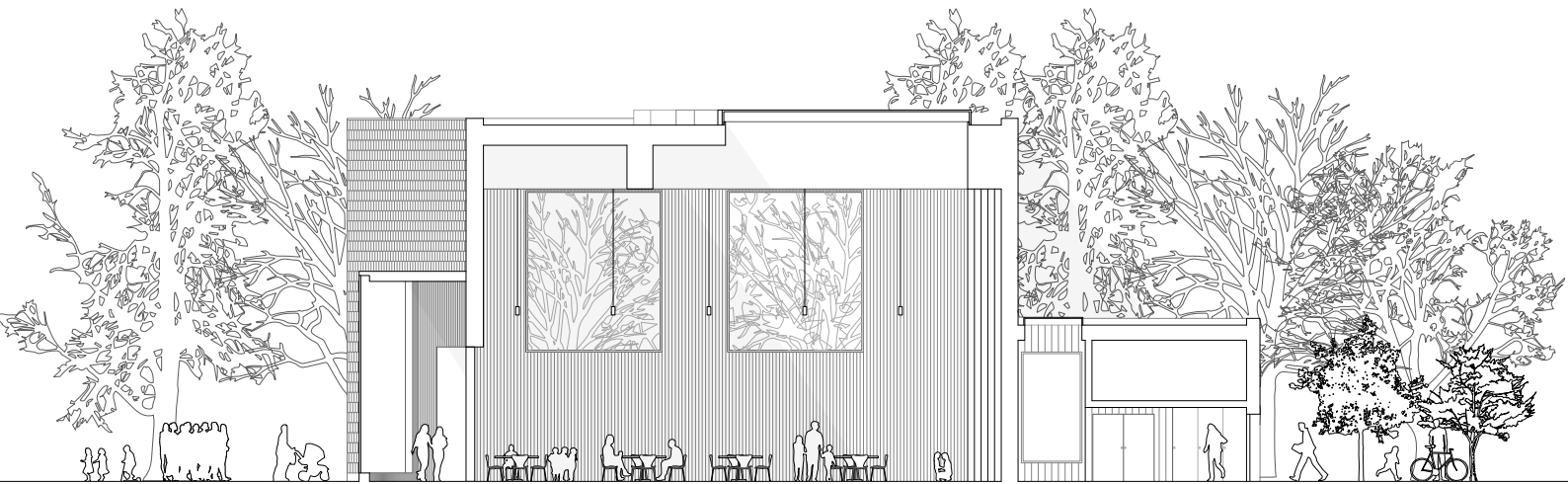
Section - sacristy and service rooms





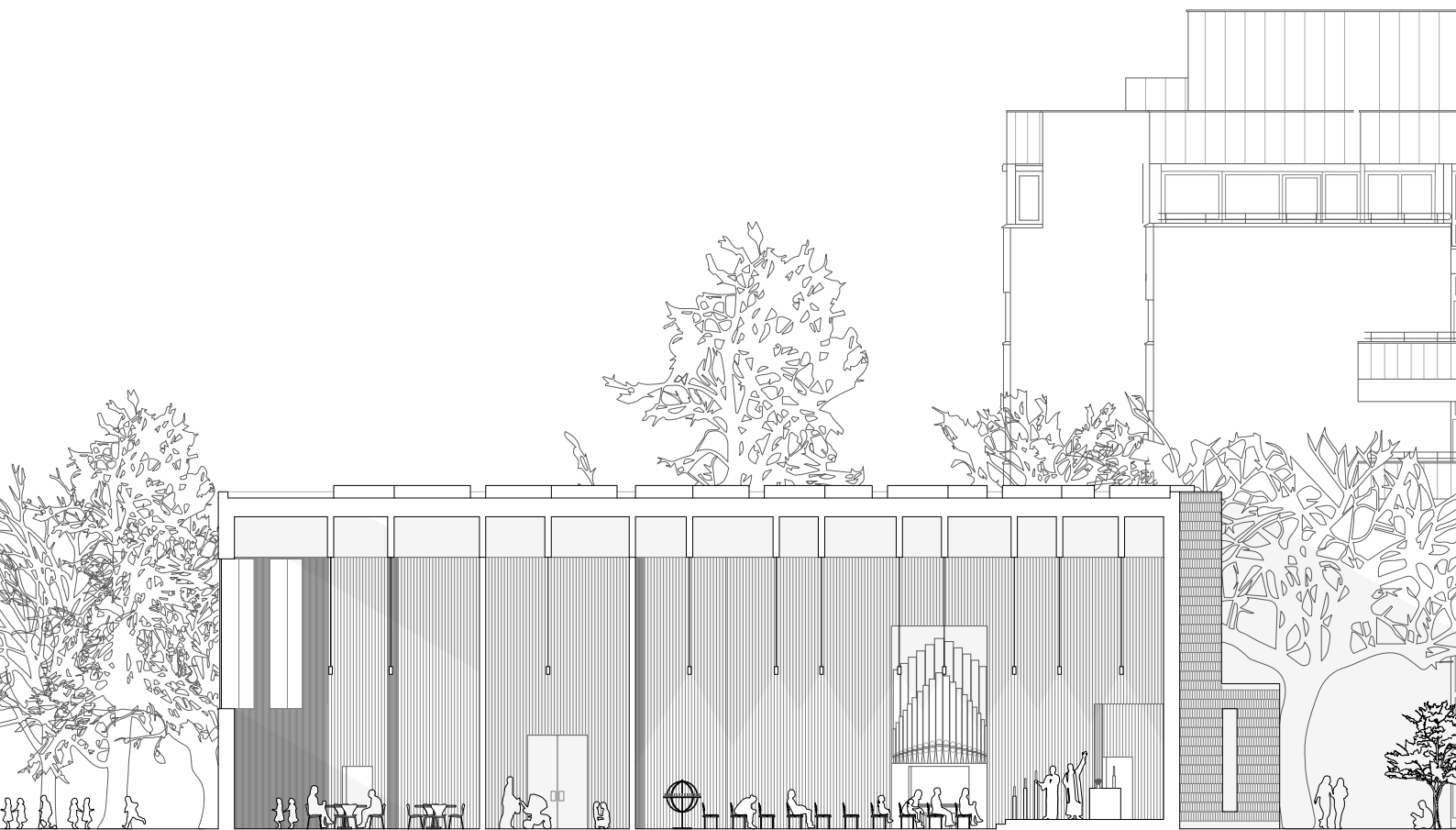
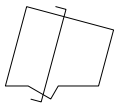
Plan - large congregation room





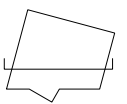
1 2,5 5 m

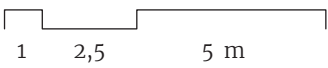
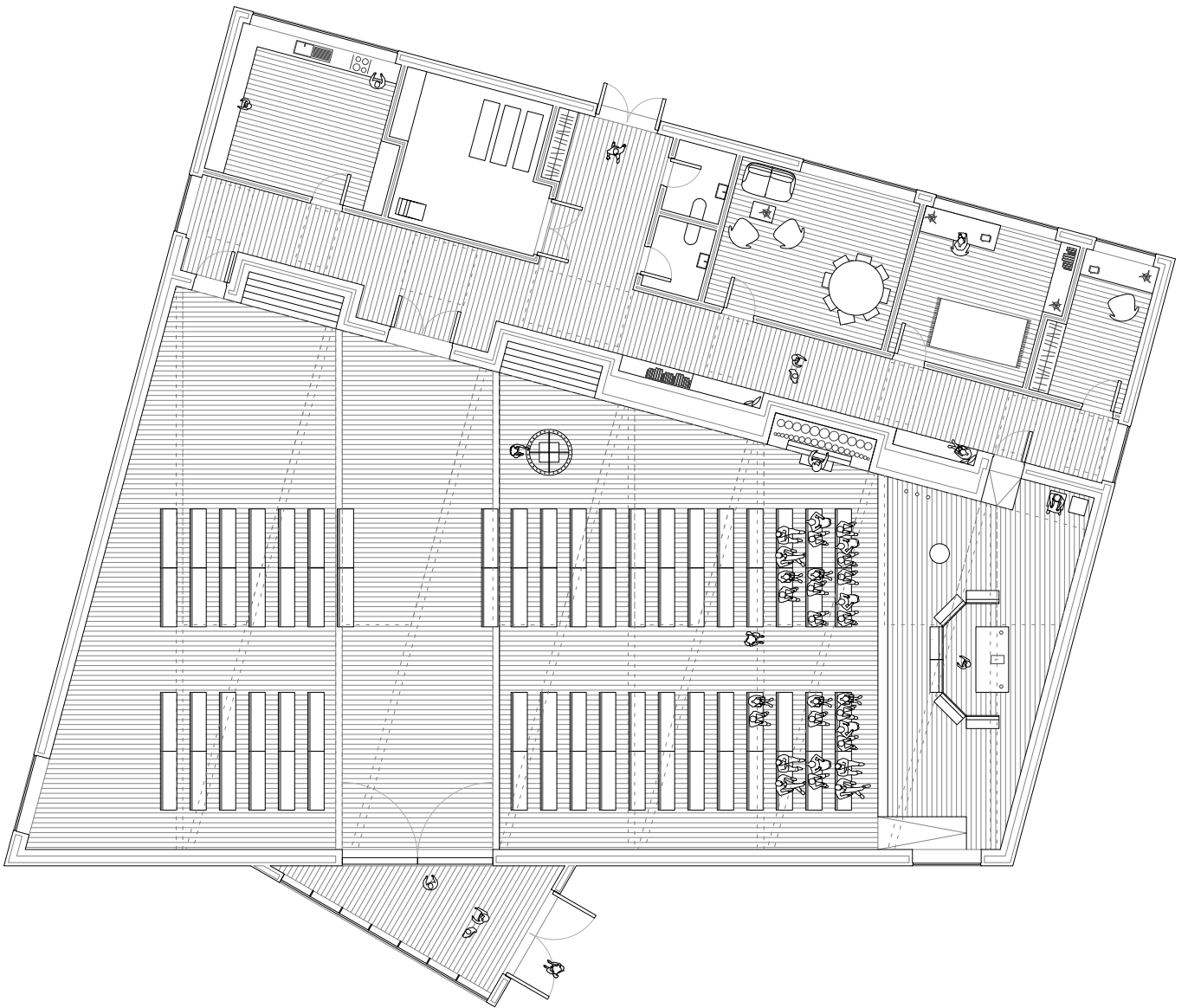
Section - congregation room



1 2,5 5 m

Section - church room and congregation room





Plan - open

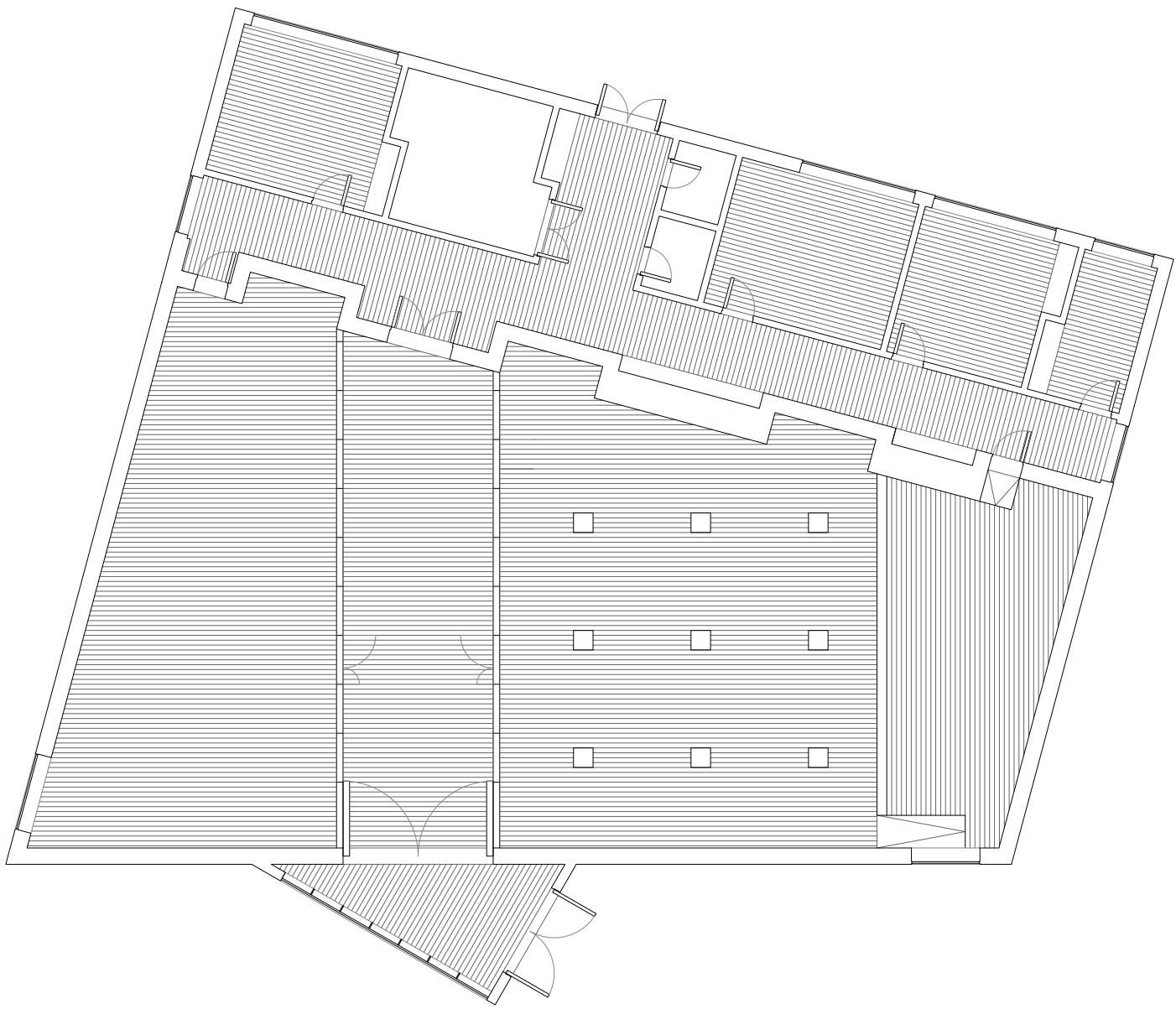




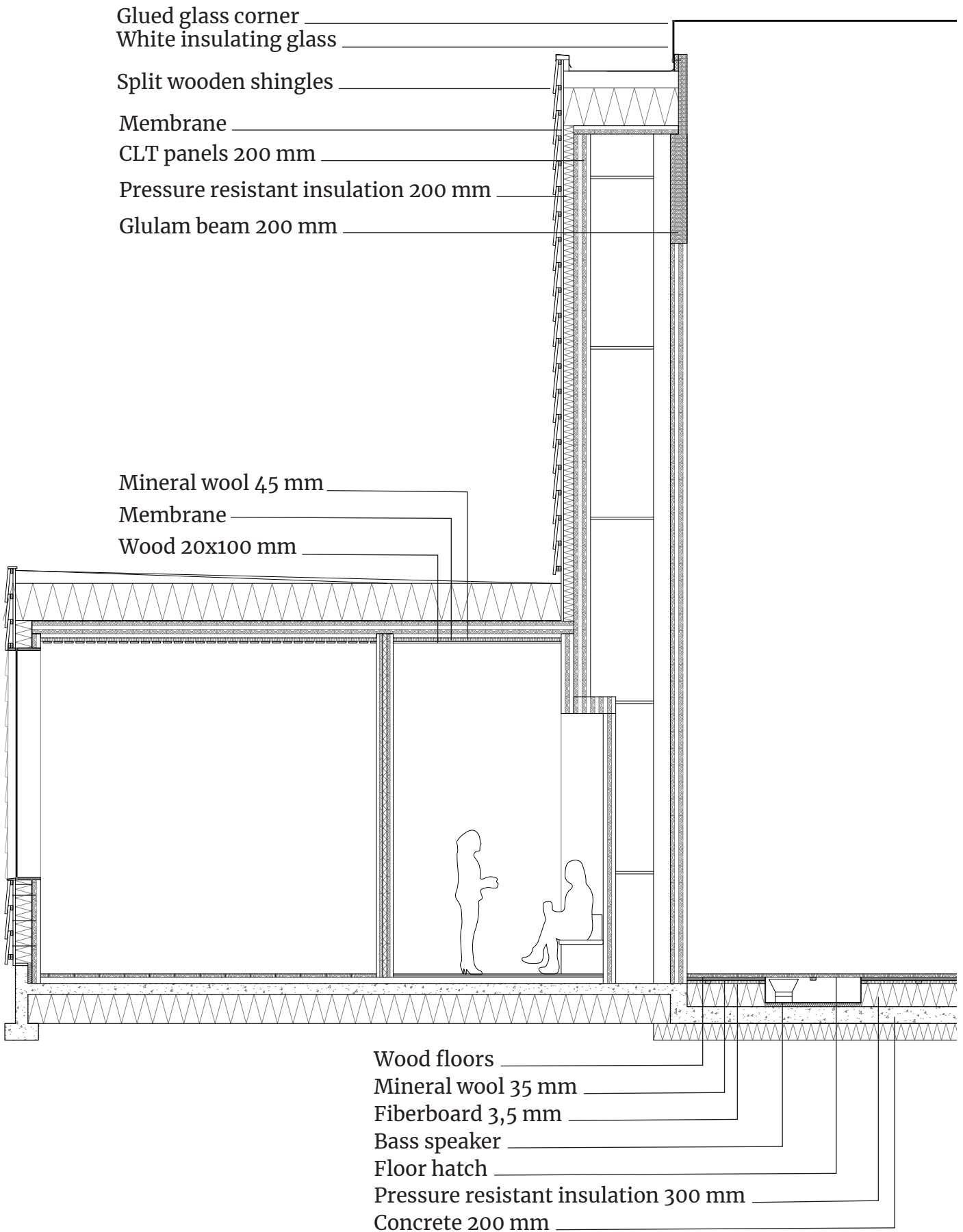


5. Details

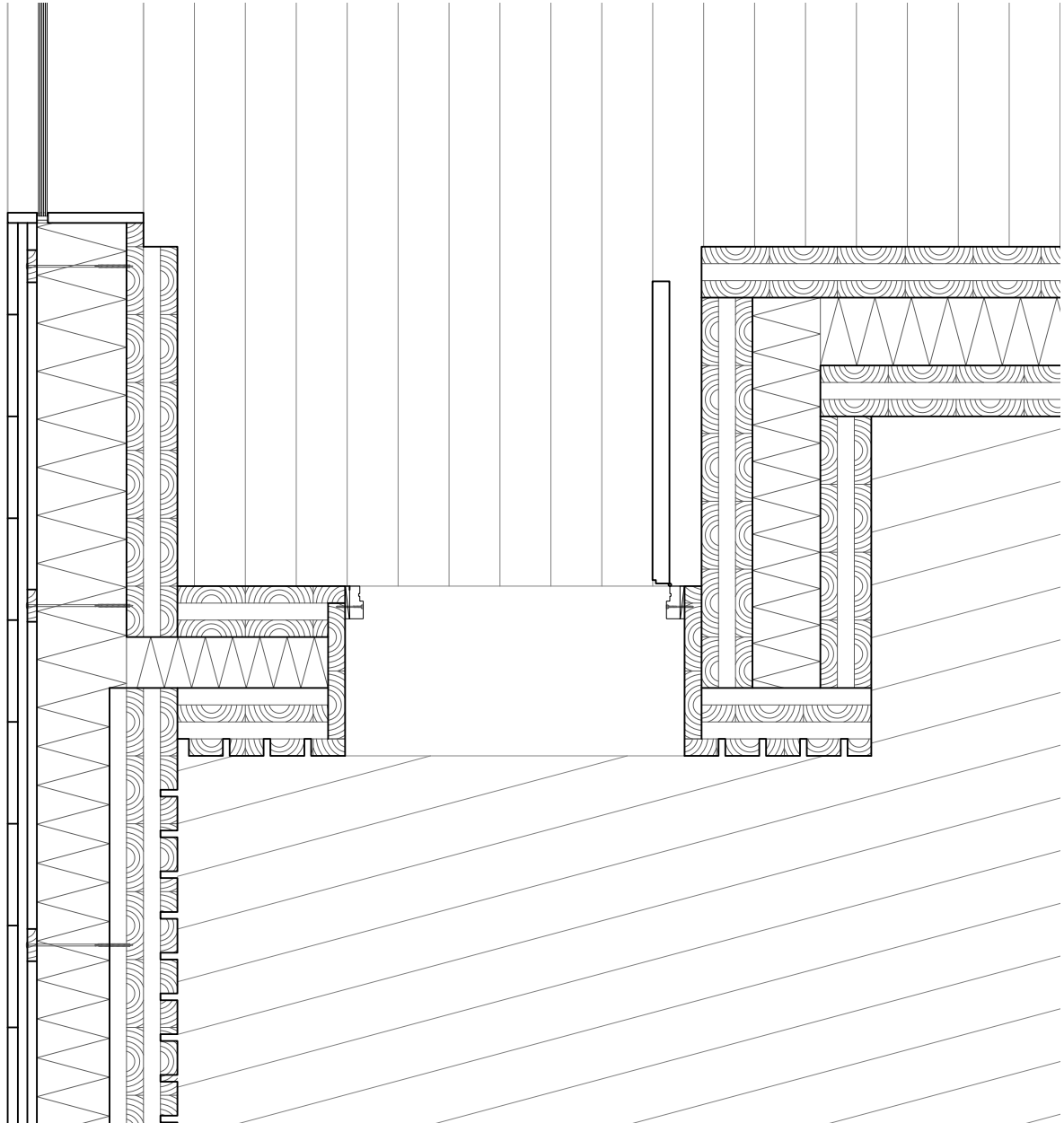
The deaf get to experience sound through the vibration floor in the church room. The vibration floor is created by placing bass speakers at regular intervals under the wooden floor.



Plan - hatches for bass speakers



Detail - section



Detail - window, door and wall



