

Collective Transformation:  
Cooperative Housing in Existing Structures

In this diploma, my aim is to study how to transform former industrial buildings into housing collectives. To study a way of living collectively in existing structures, what possibilities and limitations this will have on such a program, and to suggest a form of living in the city that is more social and experimental.

Combining building preservation and collective living, I want to find a logical connection between the two. Collective ways of living demands a new way of shaping spaces, and the limits of the existing situation can open up for interesting spacial proposals.



The Vrijburcht community, Amsterdam





## Suggested types of inhabitants



FAMILIES

## Their needs

Access to playroom and outdoor area, private apartments.  
Help with babysitting.



ELDERLY

Access to cultural and social activities and spaces. Shared kitchen, private bathrooms. Caregiver, extra space for wheelchair.



YOUNG ADULTS

Access to workspace and workshop, private room, shared kitchen and bathroom.



WORKING TOGETHER

Private studio space or apartment, access to workspace and workshop.



BUILD YOUR OWN

“Experimental” – given a space to build with access to bathrooms and kitchens as well as workshop.



REFUGEES

Access to common functions as well as own private space. Work training with access to different functions such as gardening, workshop, babysitting. Language training and integration through community

OUTDOOR SPACE



PLAY



GROW



EAT

SHARED SPACES



WORKSHOP



WORKSPACE



BIG KITCHEN



AUDITORIUM

PLAYROOMS

GYM

LAUNDRY ROOMS

BICYCLE ROOMS

SEMI PUBLIC SPACES



CAFE



AUDITORIUM



WORKSHOP

## Values

### *Community*

To create a good living environment, the social benefits for living together, sense of neighborhood and participation

### *Preservation*

Continuity in history and collective memory, and sustainability in persevering.

### *Innovation*

This translates in the ability to experiment and self building.

### *Diversity*

In focusing on integration and community.

Site











The Old Factory, 1921

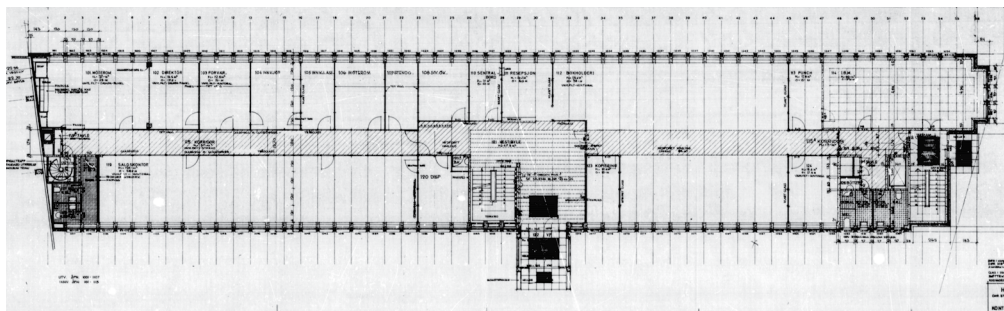






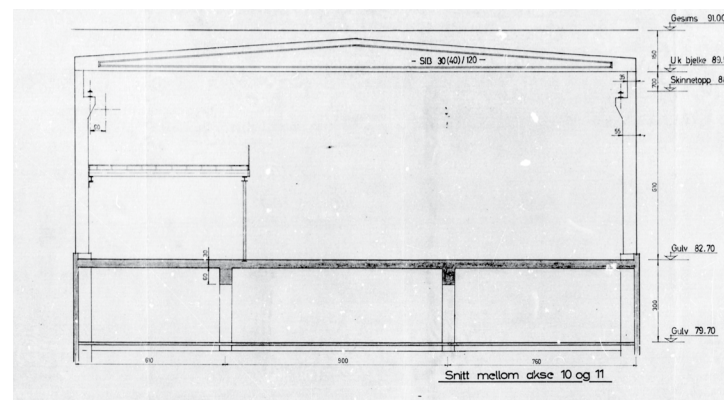
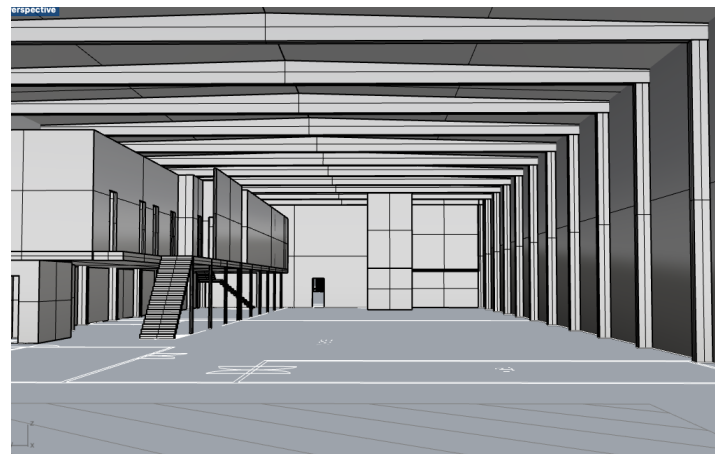


Office building, 1967





# Warehouse, 1967

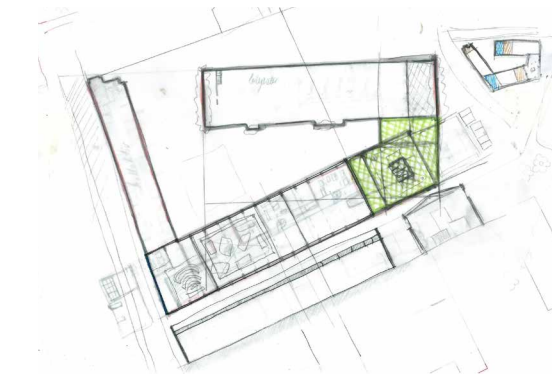
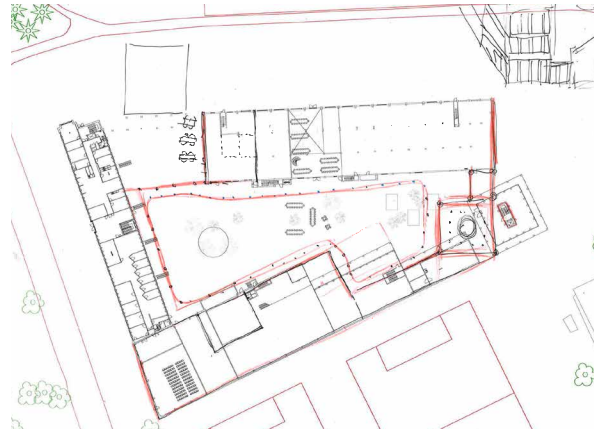
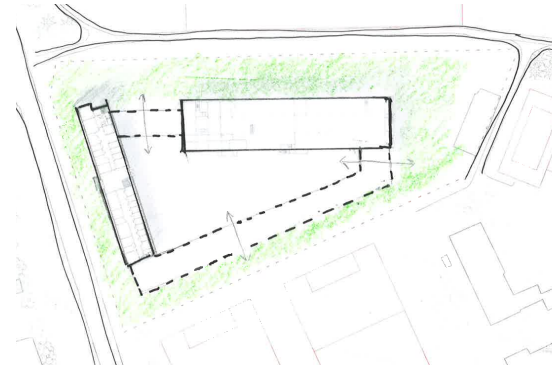
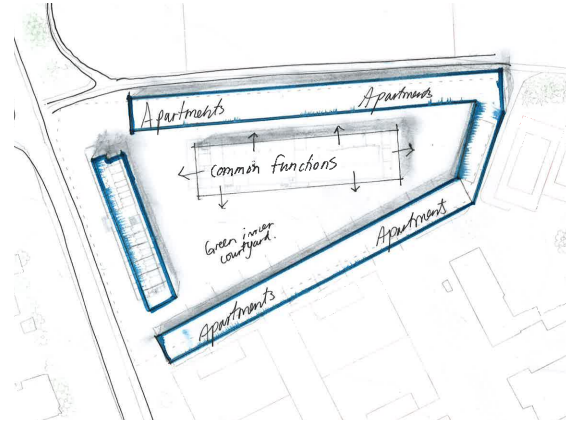
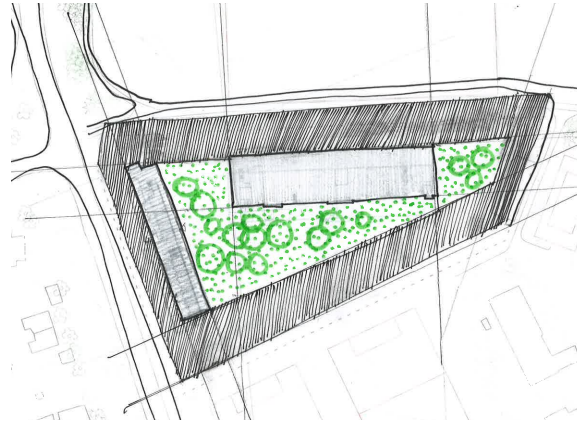




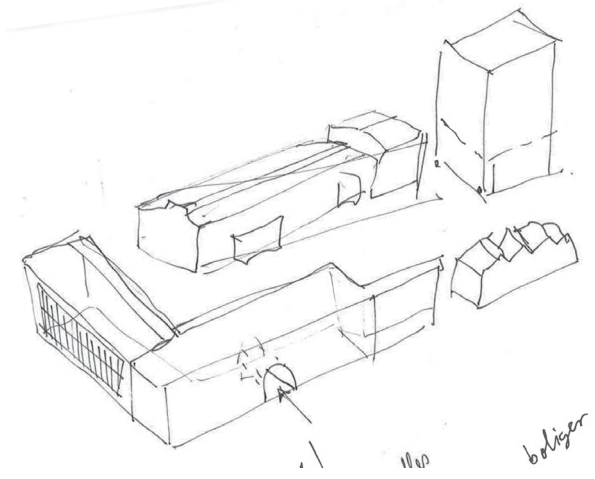
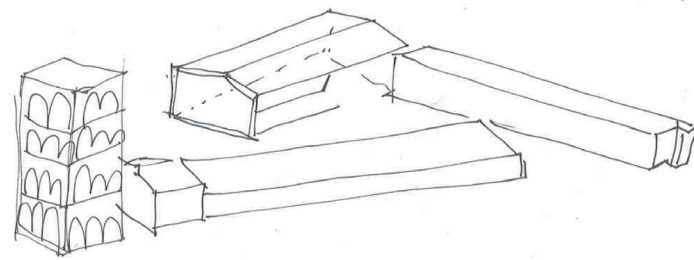
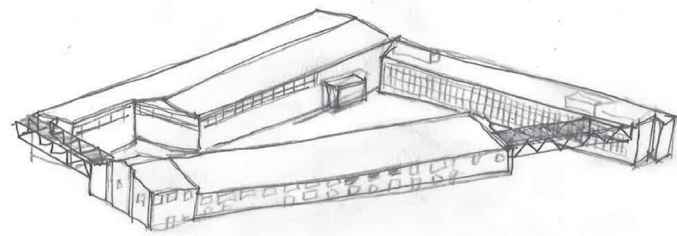
# Courtyard

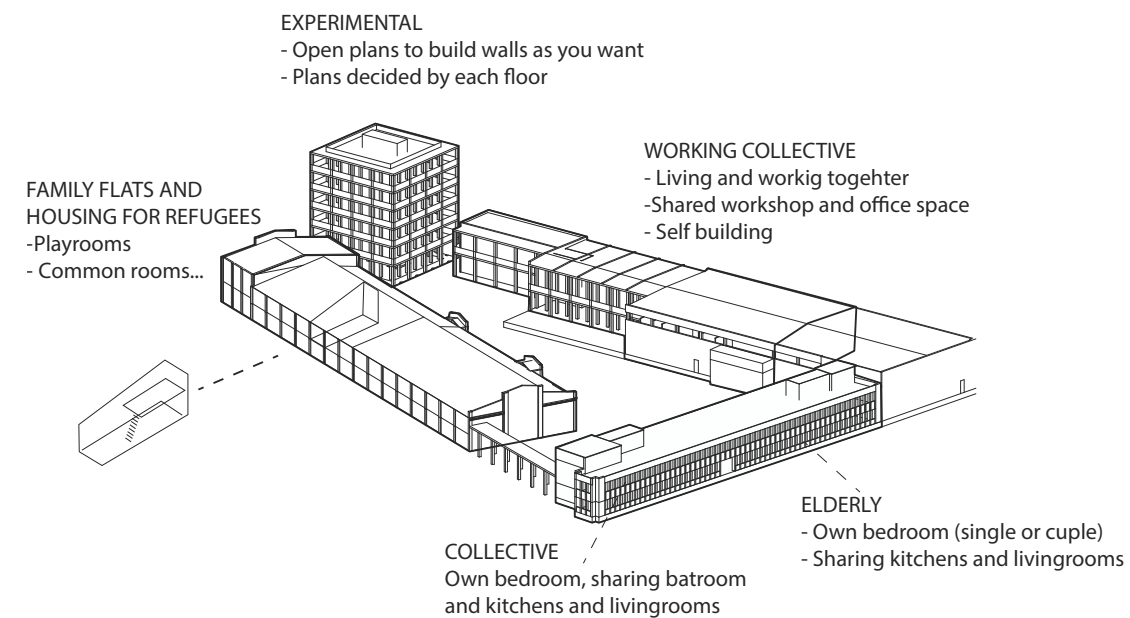


Process









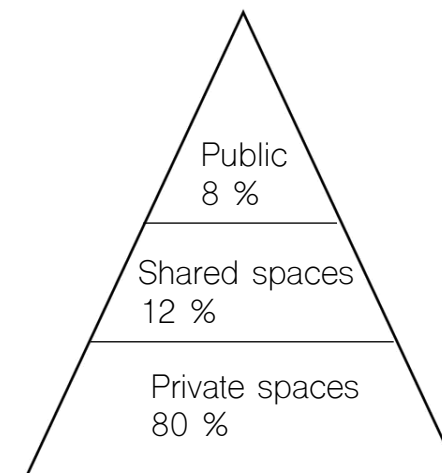
The Project

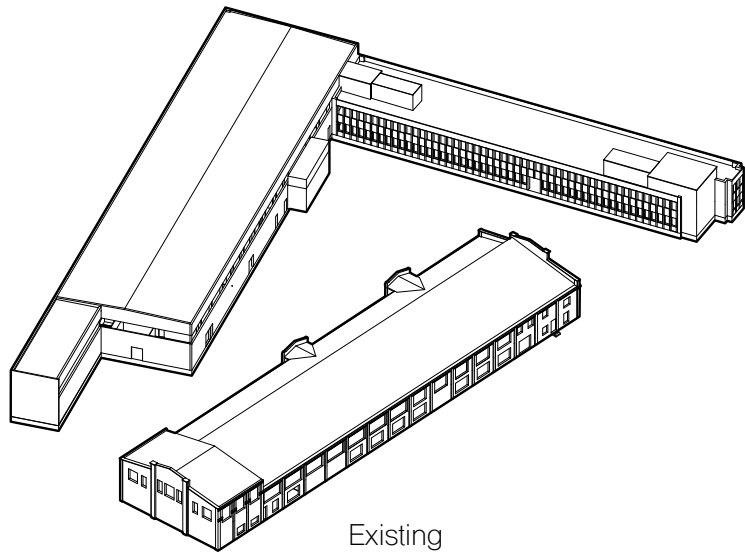


Old building: 1670 m<sup>2</sup>  
Office building: 3670 m<sup>2</sup>  
Warehouse: 4000 m<sup>2</sup>  
Tower: 3500 m<sup>2</sup>

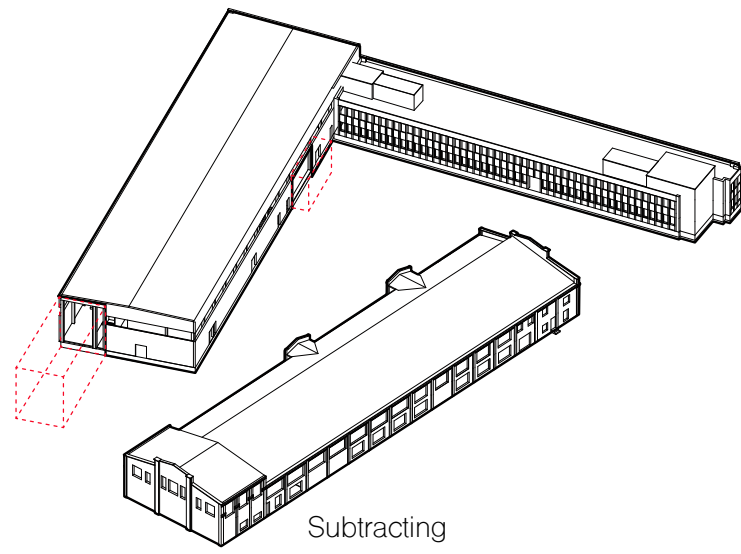
Sum: 12840 m<sup>2</sup>

300 people  
30-35 m<sup>2</sup> each

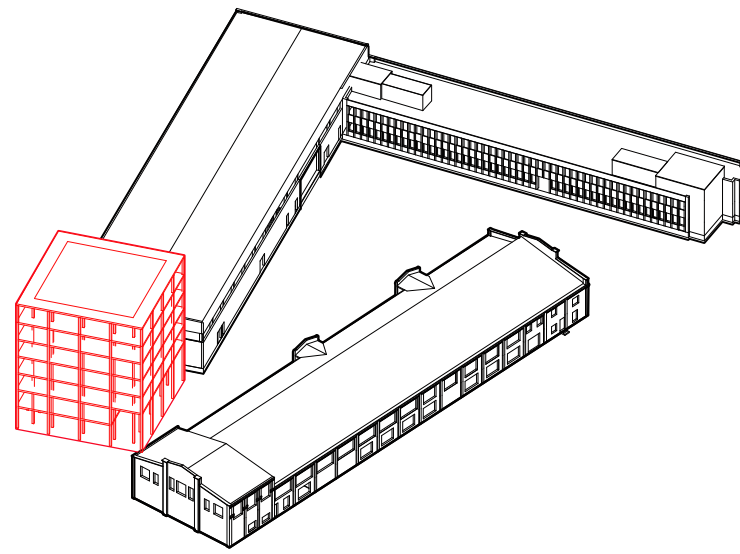




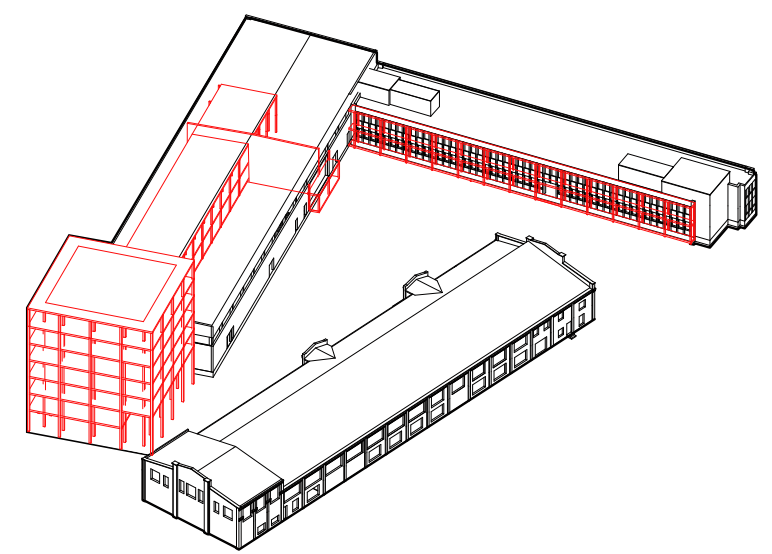
Existing



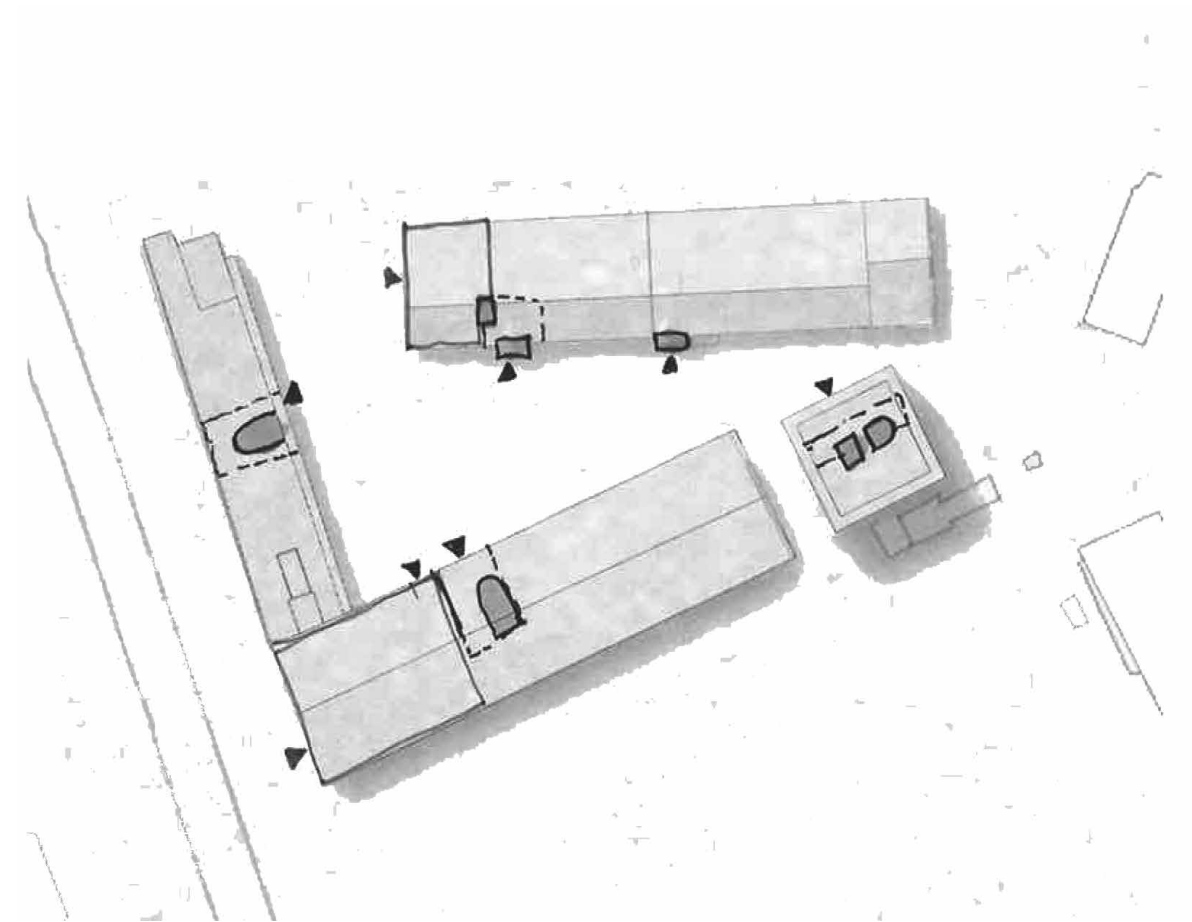
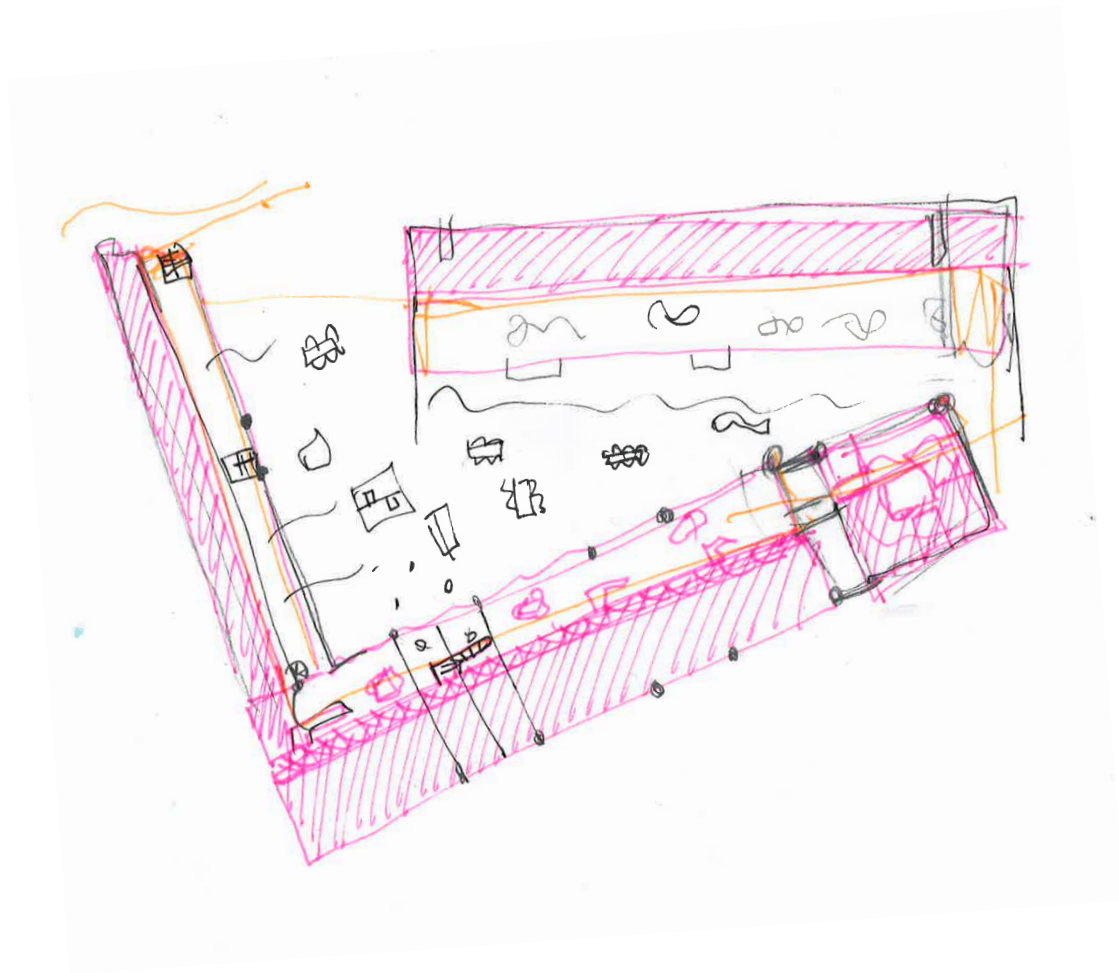
Subtracting



Adding 1



Adding 2





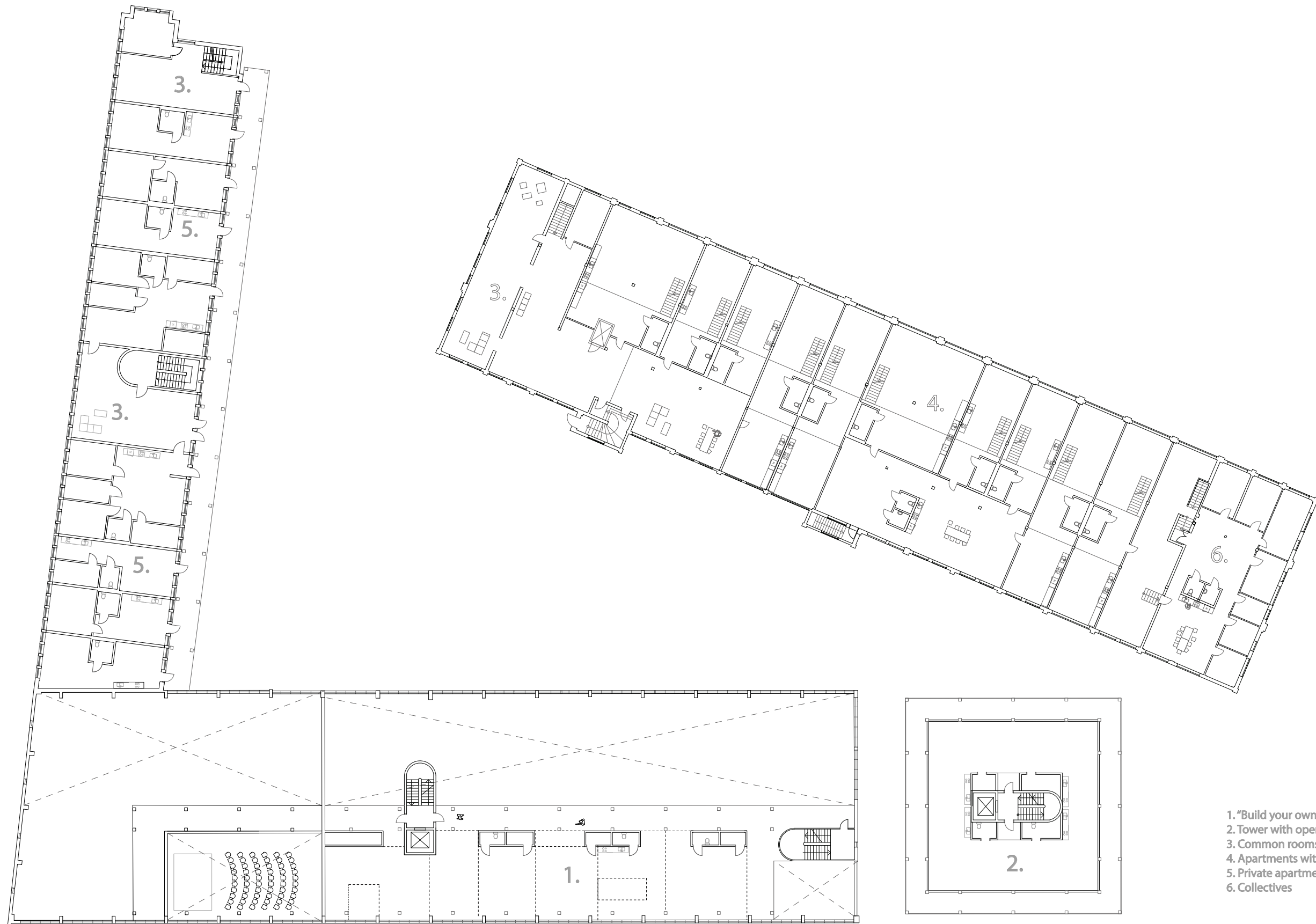
Ground floor plan  
1:200

- 1. Cafe
- 2. Workshop
- 3. Auditorium
- 4. Dining hall
- 5. Kitchen for everyone
- 6. Workspace
- 7. Gym
- 8. Green houses
- 9. Byscle room
- 10. Housing collectives
- 11. Guest rooms









Plan 1:200

