



Interaction beyond limits

- *A library and exhibition space*

Lena-Mari Nordli

Content

Introduction s. 3-4

The project s.5-17

Process s.18-28

Introduction

In the beginning of spring 2018 I was introduced to the concept of *parallax*. Parallax has been an important influence in architecture for more than two centuries - ever since the interest for the sensual aspect, changing landscape while moving, and multiple view was introduced in garden designs and in architecture. This has been an inspiration for me when developing the *architectural program* for this project.

Architectural program

Inspired by the concept of parallax I developed an architectural program containing the overlapping themes of sight-lines and movement. I wanted to meet the functional program with the intention to provide a space with extended sensual borders, and investigate the spaces' capacity to interact with the surroundings.

Background

The Oslo School of Architecture and Design (AHO) has since 2001 been located at Maridalsveien 29. From 2001 and up until this date both the organisation and the number of students has increased. There is an pressure upon the schools premises, and the growth is expected to continue. At the same time has the AHO library expressed an interest for more varied reading spaces, and the school is in general in need for additional exhibition space. An extension of the school is needed.

The site

The site is the vacant area between the schools east and south wing. I started this project on site. My point of departure was the sight-lines found there, and the movement across the site. I see it as important to emphasize the movement across the site, and its connections to the surroundings.

Functional program

The program of this diploma project is a new library and exhibition space at AHO, and will be a mix between public spaces and areas private for the students at specific hours.

- Varied reading spaces.
- Gallery/exhibition space.
- Offices.
- Meeting room.
- Reception area.
- The collection of books

1500 m2 - Total area.

Construction princi-

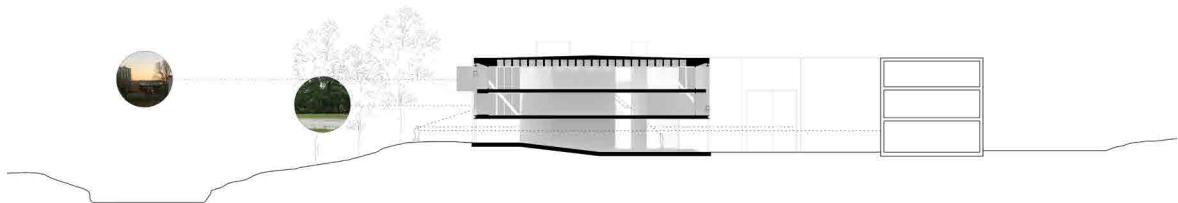
The project is a hybrid structure of concrete and steel. The primary structure is the folded concrete walls, moving through the three floors.

The 400 mm Bubledecks can take a span up to 13 meters, and cantilever 4 meters.

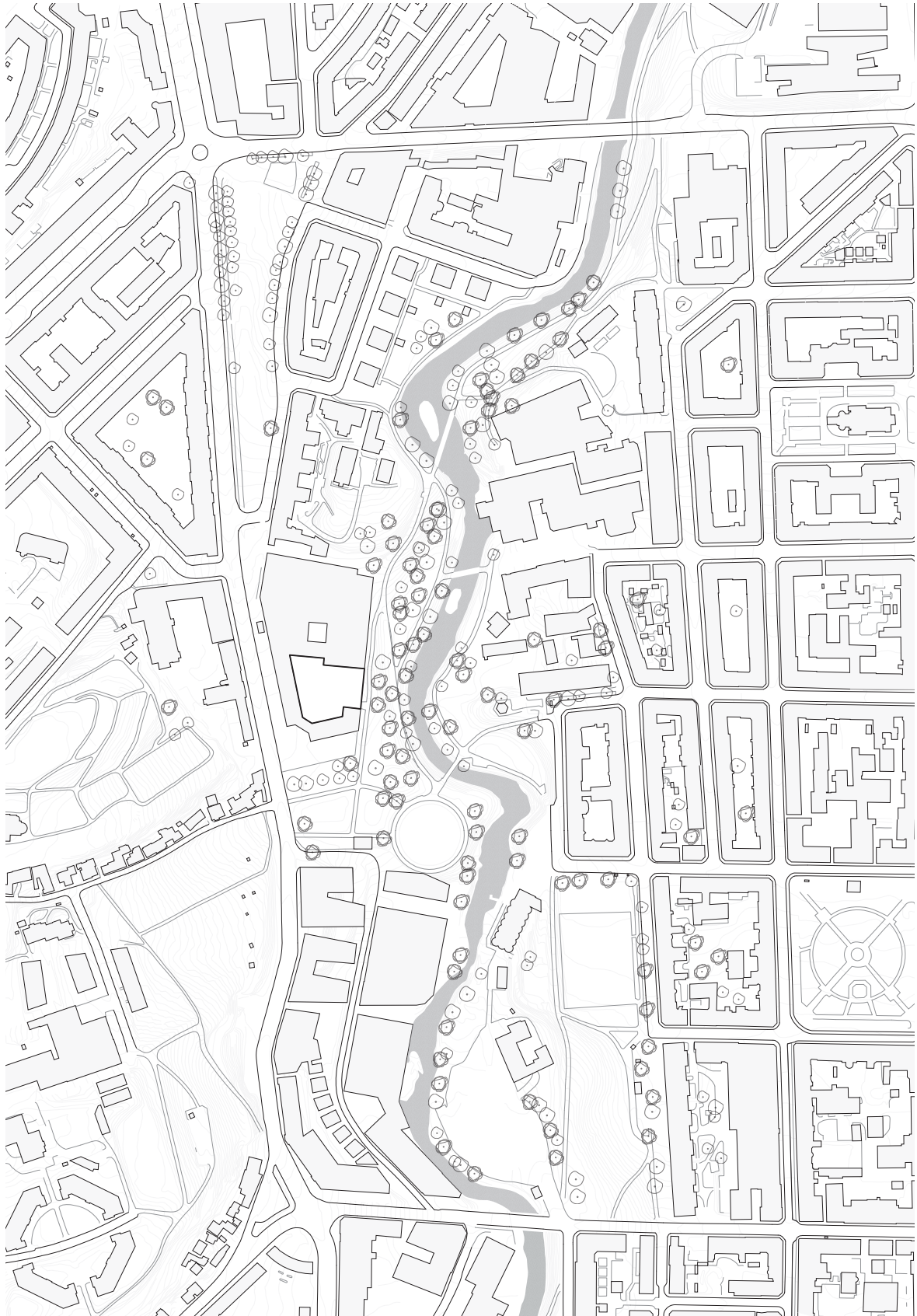
Steel trusses frames the whole structure, and 4 200Ø steel pilars leads the forces down on each corner of the frame.

The project

My diploma project is a result of a process of spatial studies, with the aim to make a space which interacts with the surrounding space, working on the changing sight-lines and movement found on site. The process can be find in the last part of this document.



The site



Movement on site



Sight-lines



Site plan 1:200

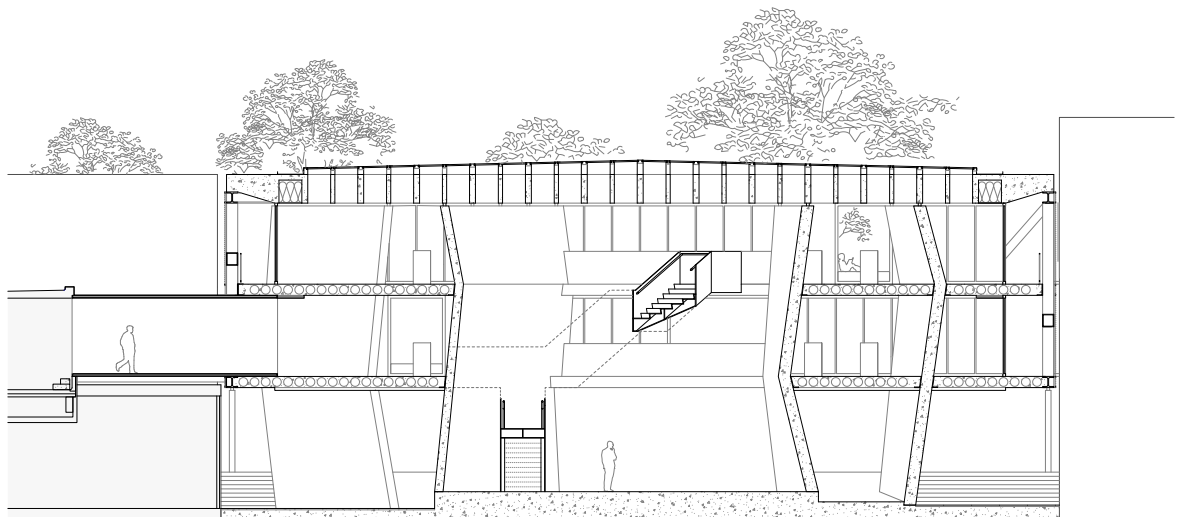
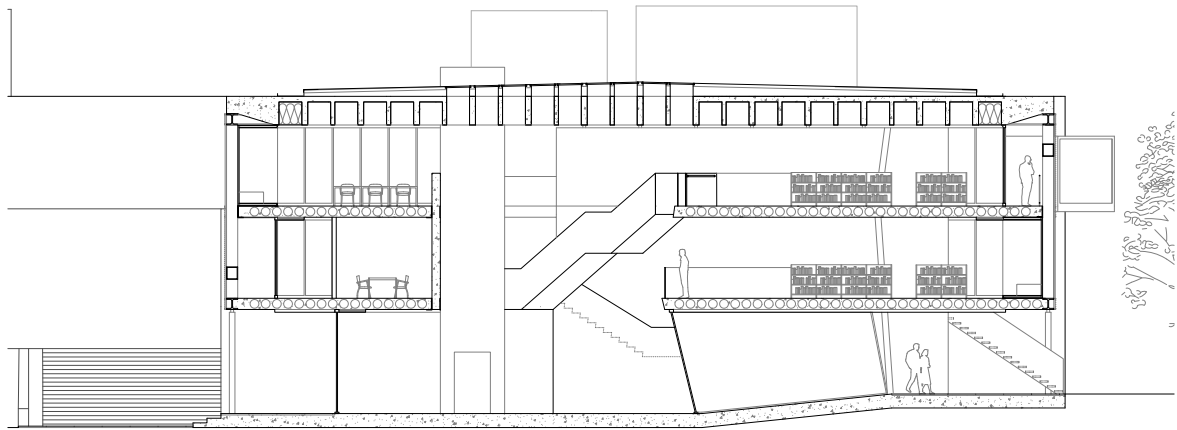
The ground floor is mostly open, as most of the project is lifted above ground, allowing movement across the site, from the portal leading into the school yard, and to the park area to the east. The movement is framed by four folded walls, which also accentuates specific sight-lines . The only closed space on ground floor is the space formed between two of the folded walls. This is the new public exhibition space.

The projects main entrance leads into the exhibition space, and then to the main staircase up to the library in the 2nd and 3rd floor.



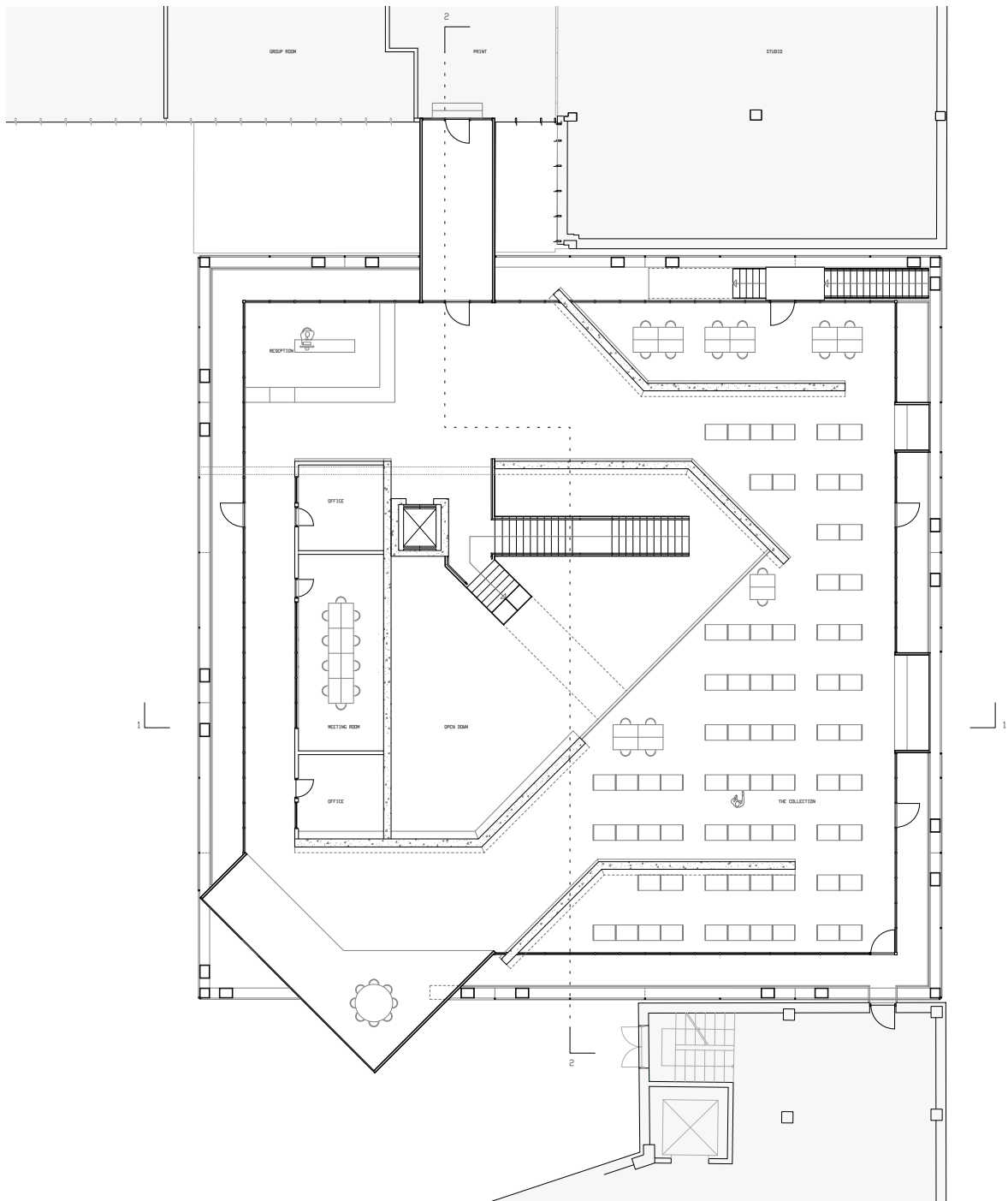
Sections 1:50

The folded concrete walls continues up through the 2nd and 3rd floor, which contains the new library. The tilting of the walls gives slight variations of space. The exhibition space is open all the way to the 3rd floor, and the movement in the project revolves around this space.



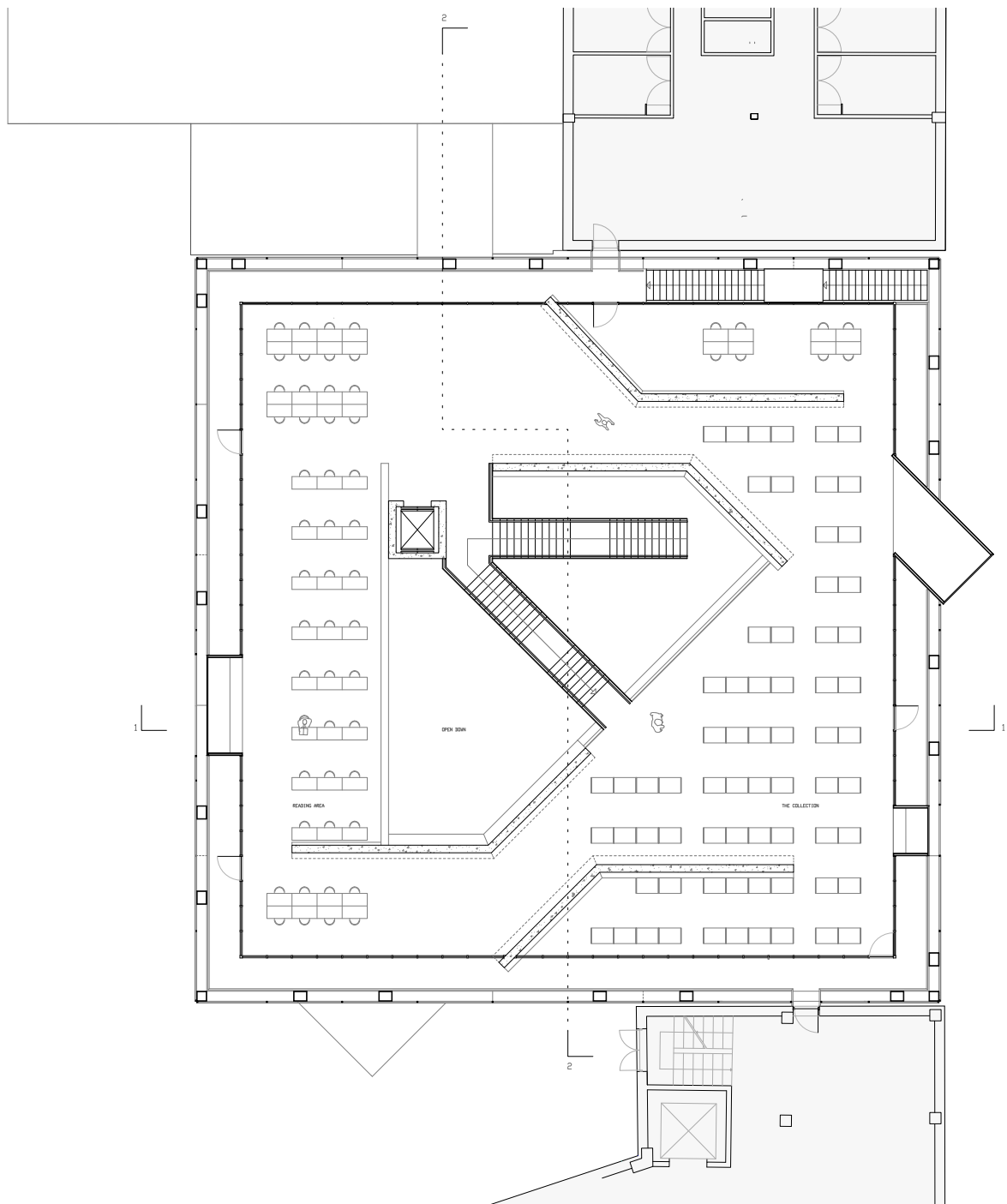
2nd floor 1:50

A steel bridge connects the library to the 2nd floor of the school. Except for the main staircase arriving from the exhibition area, there is possible to use the already existing elevator and staircase of the schools south wing, or a staircase connected to the schools east wing.

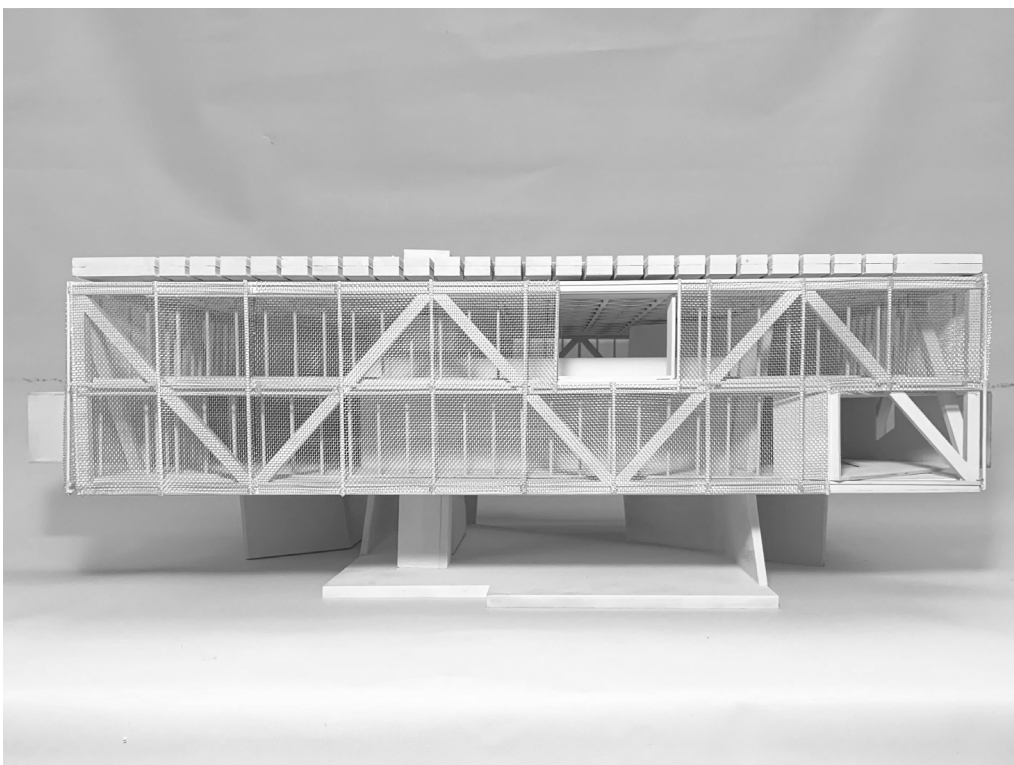
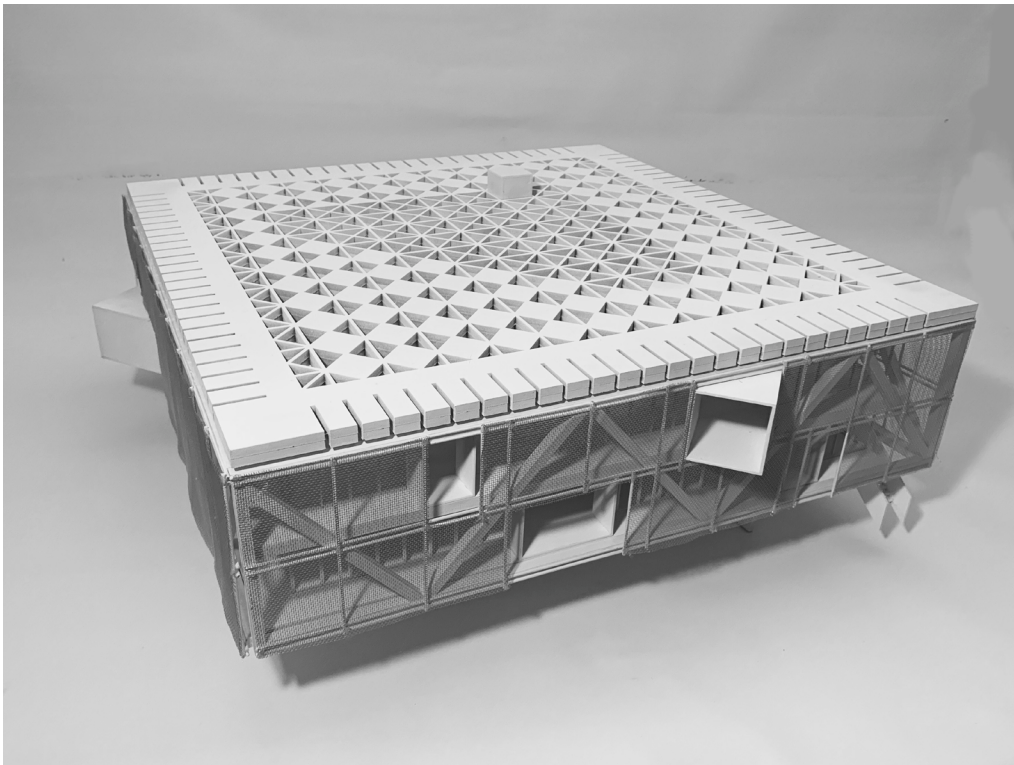


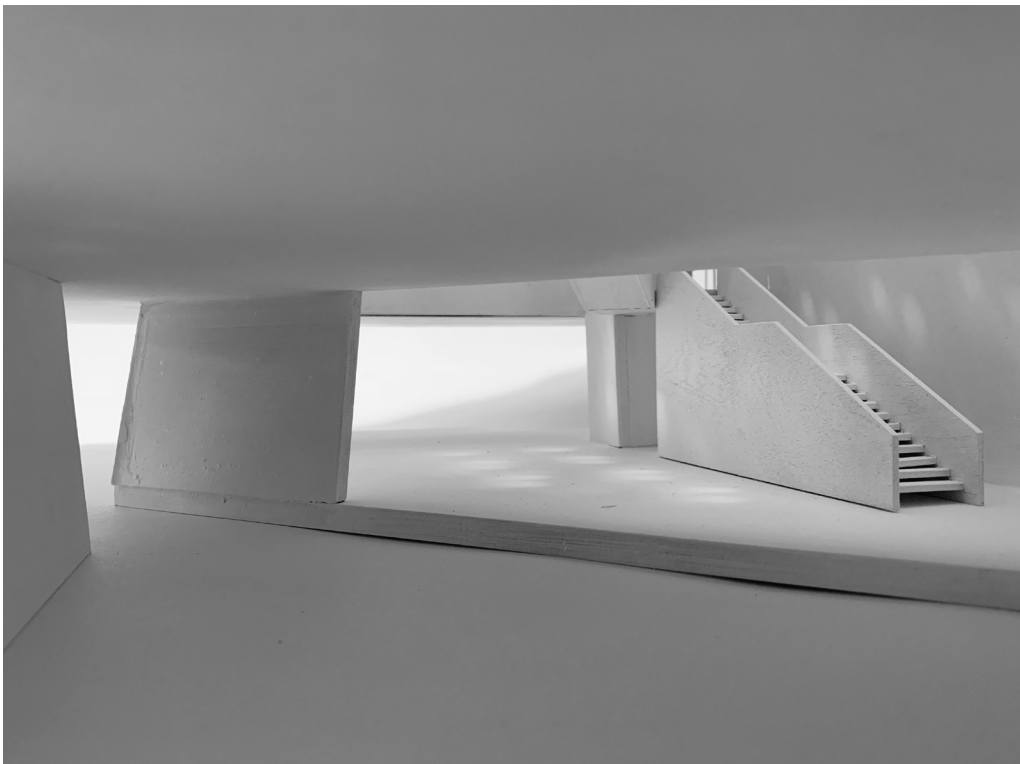
3rd floor 1:50

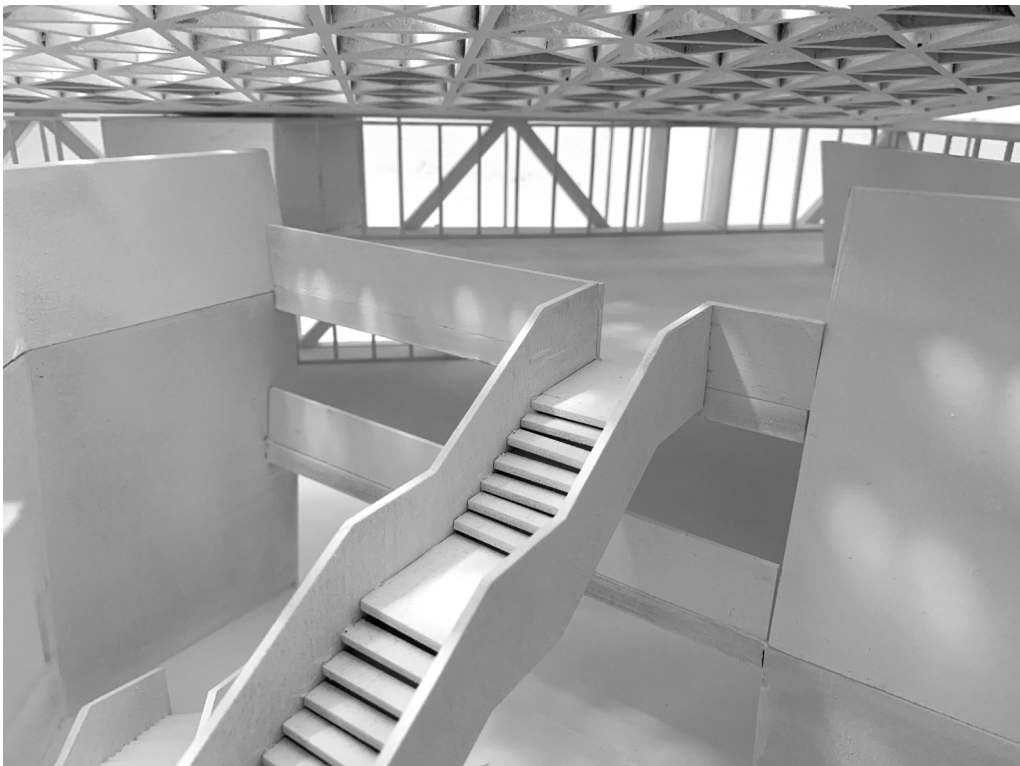
The climatized space is pulled back from the facades, creating an outdoor buffer space on the 2nd and 3rd floor. A mesh of steel creates a translucent veil around the buffer space to blur the border between inside and outside. Steel boxes erupts the buffer space and interact with situations in the surroundings, or connects to the existing school.

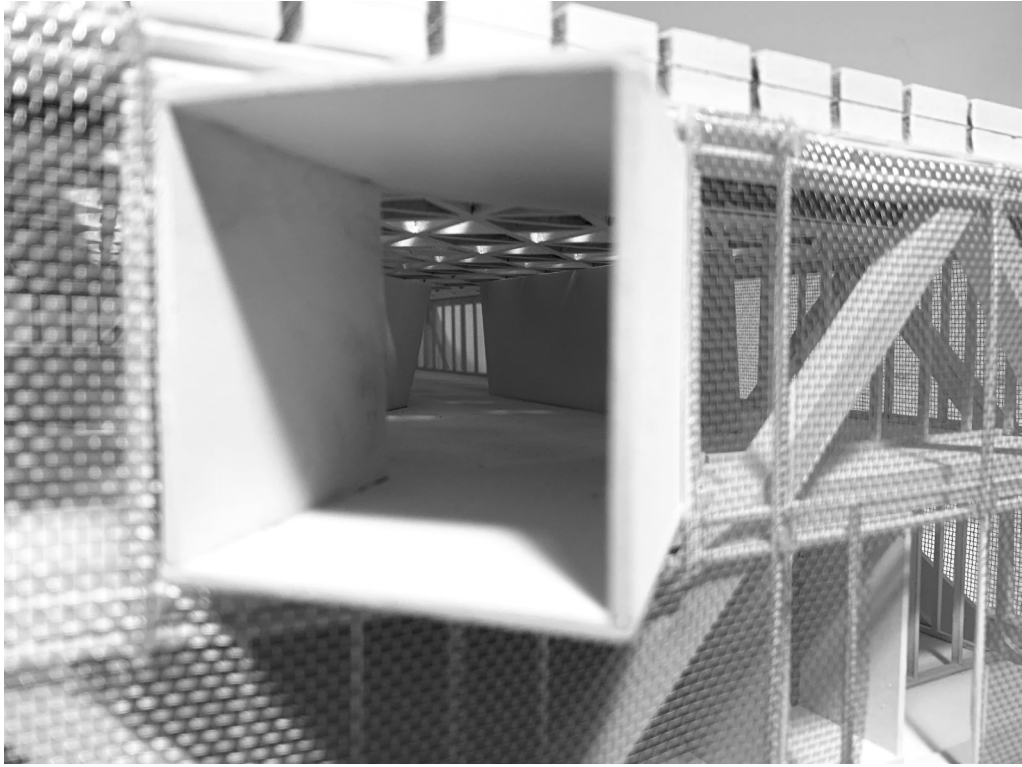


Model photo









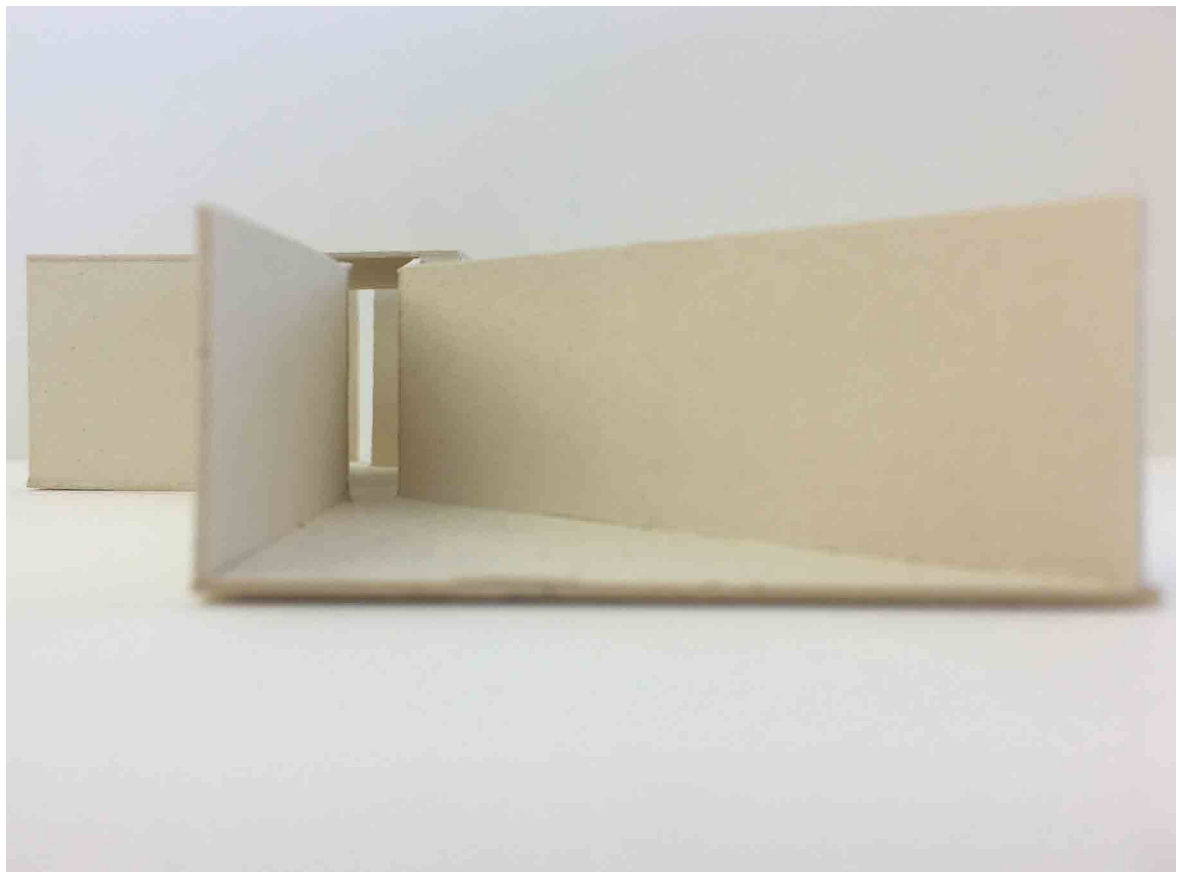
Connection to the park



Process

In the following pages I will show an excerpt of the spacial studies, models, drawings and site investigations I did during the development of this project.

Spacial study: crossing of sightlines



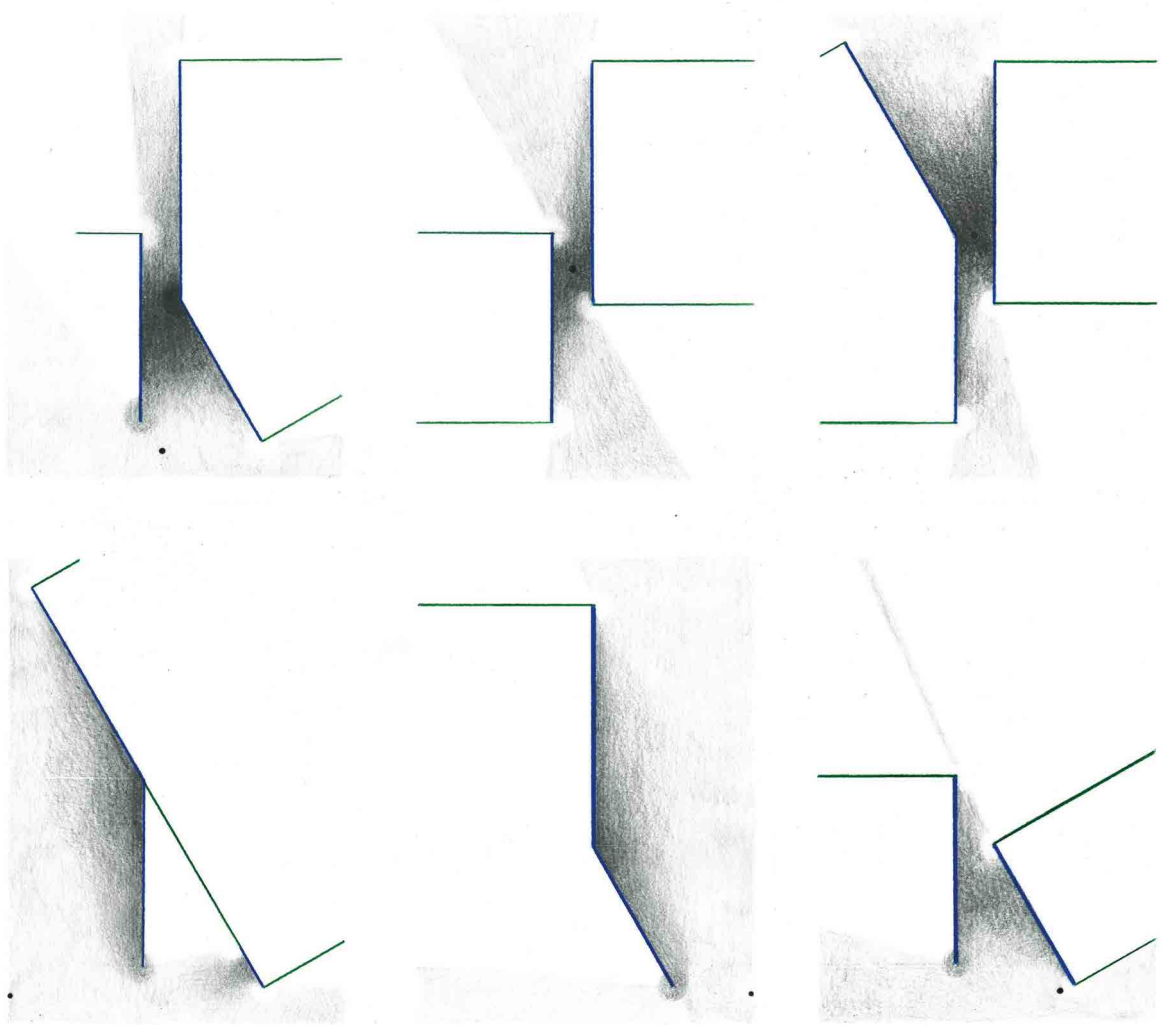
Spacial study: Parallax.

- Moving by 4 spaces, looking through.



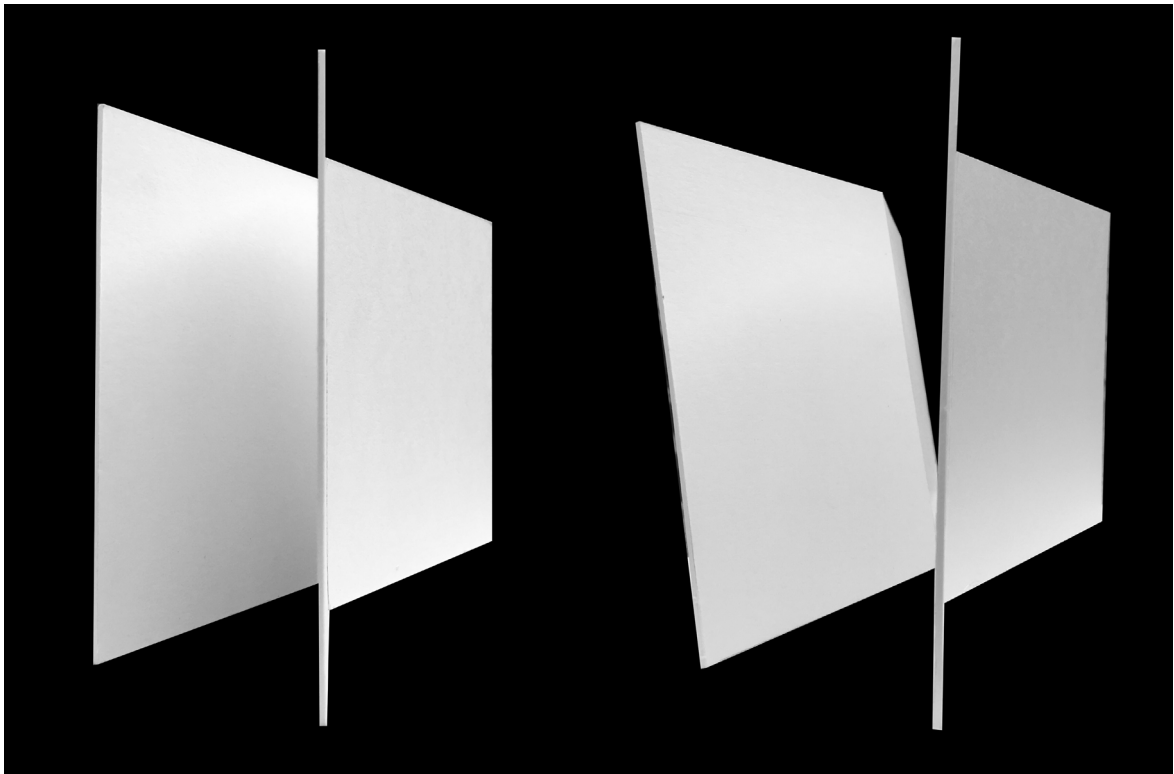
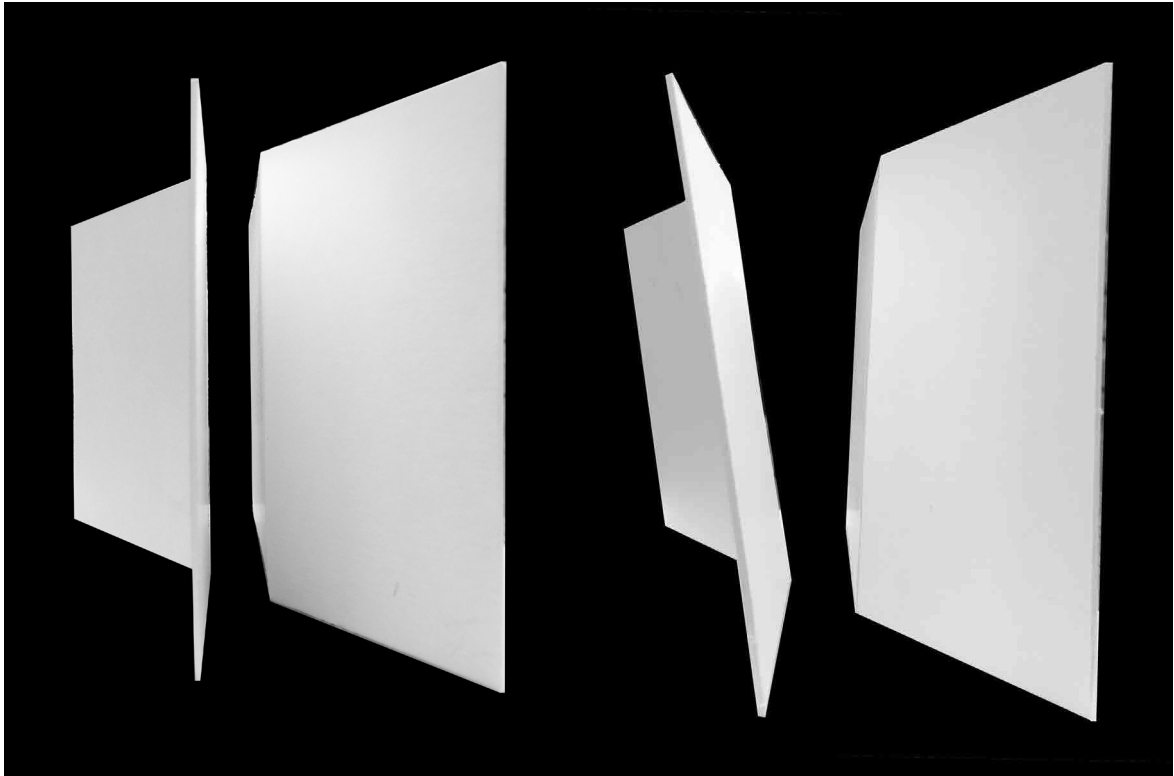
Investigating of space in drawing

- Experience of (the same) space from different positions.



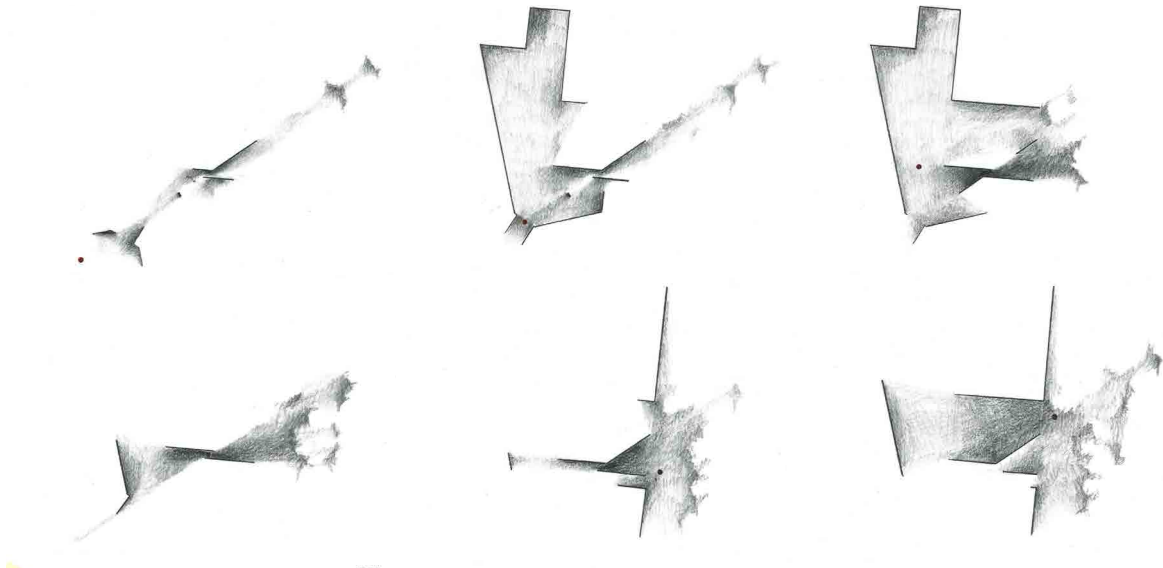
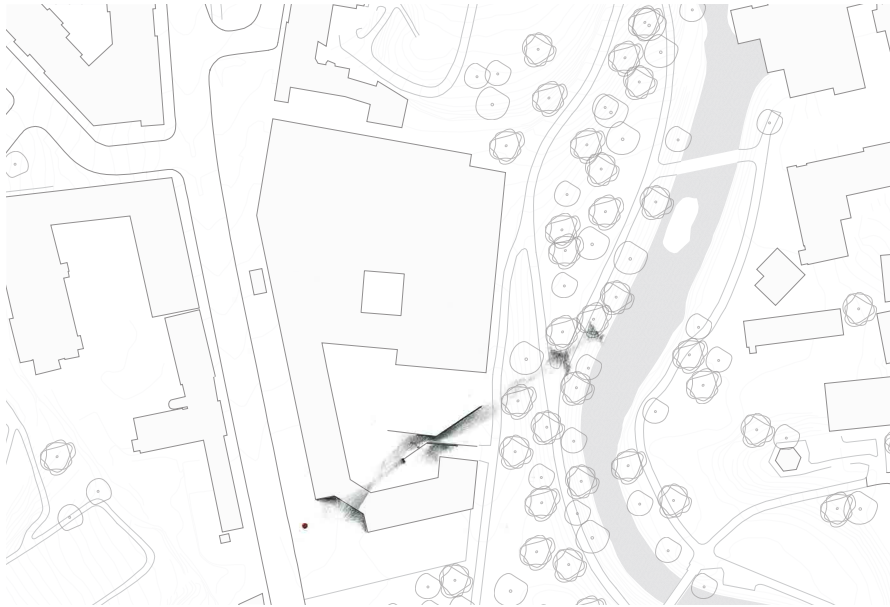
Spacial study: Tilted walls

- Extended sight-line looking through the tilted space, compared to the vertical walls.



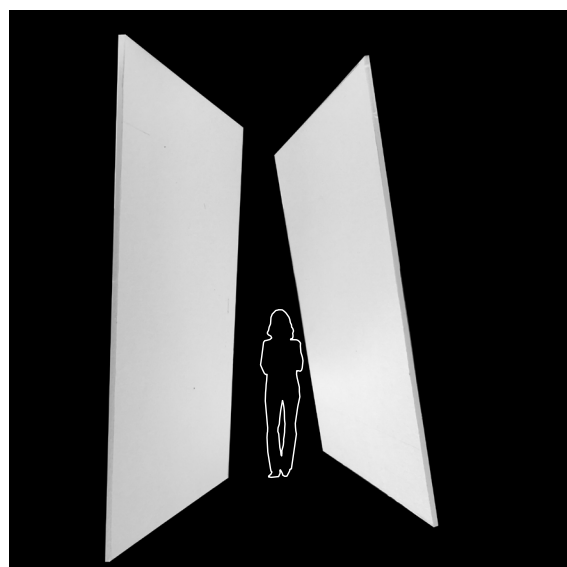
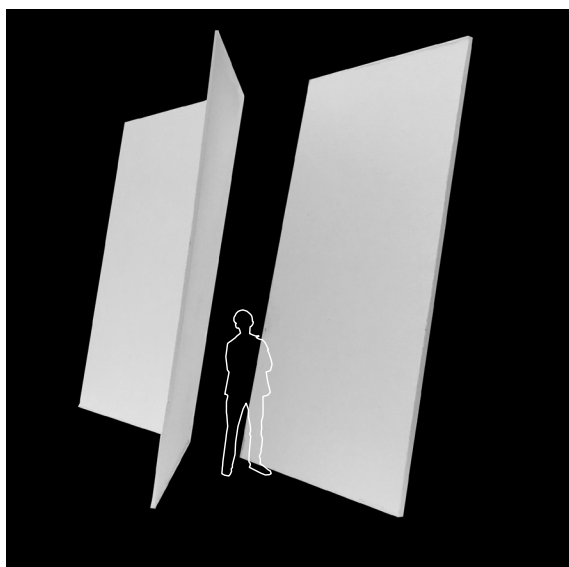
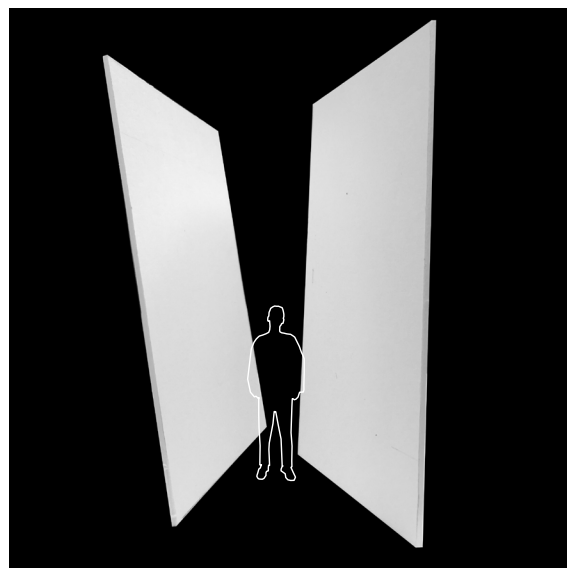
Drawing series: tilted walls

- Experience of tilted walls on site, from different positions.

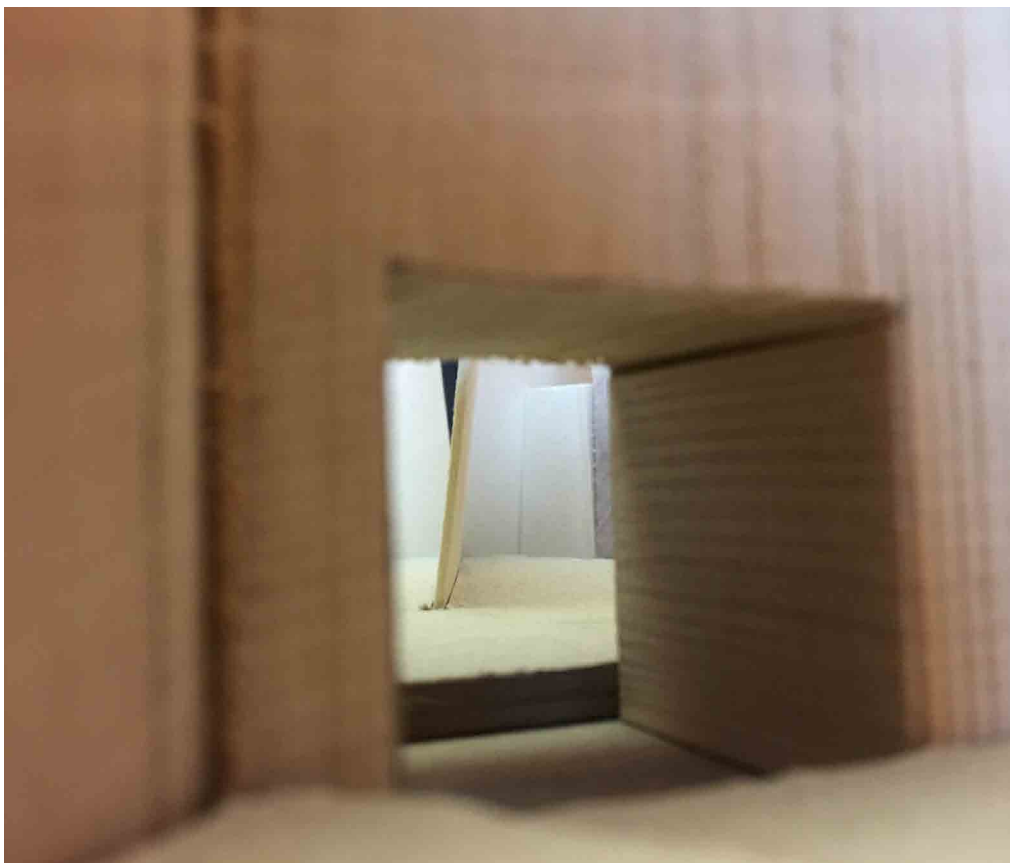
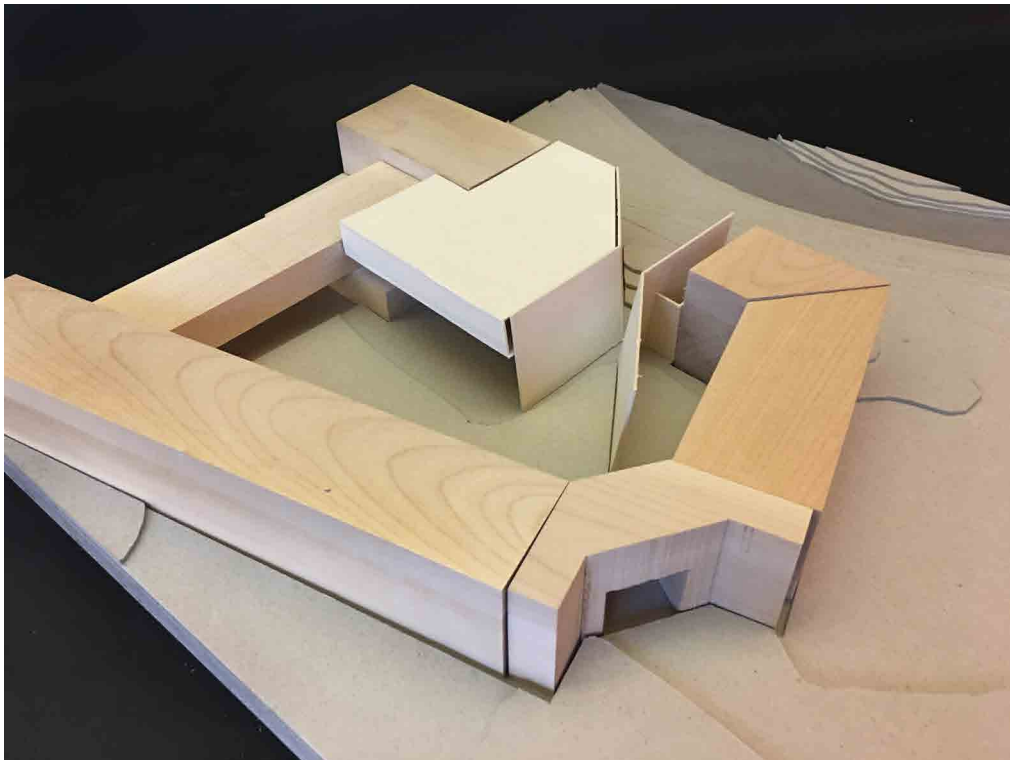


Spatial study: tilted walls

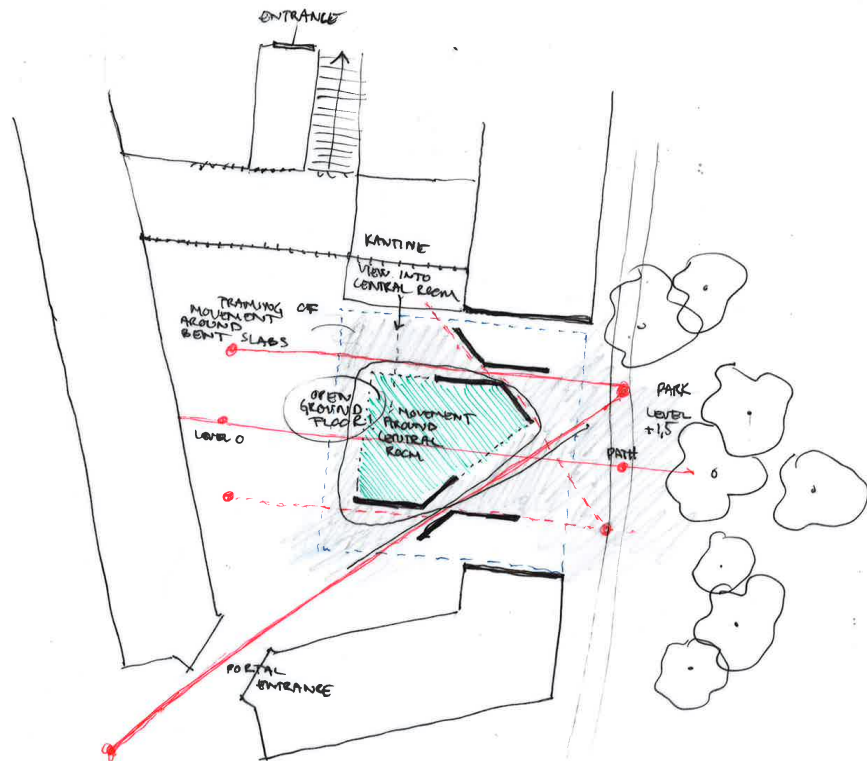
- Slight variations of similar spaces.



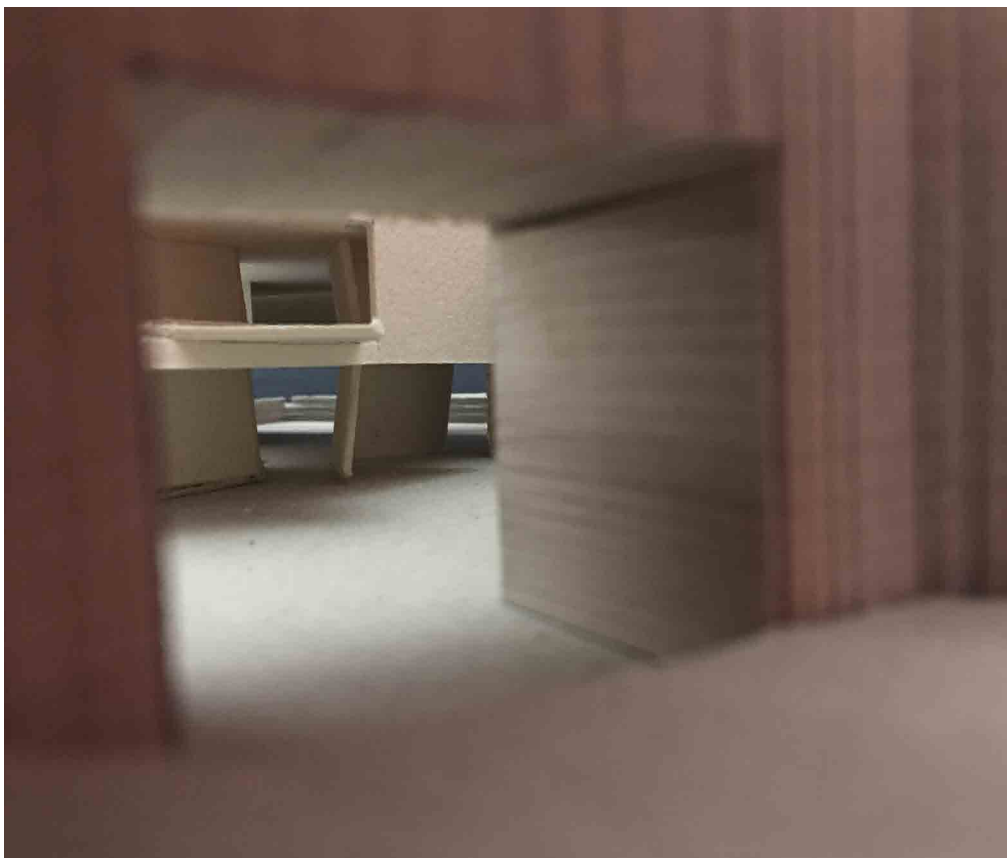
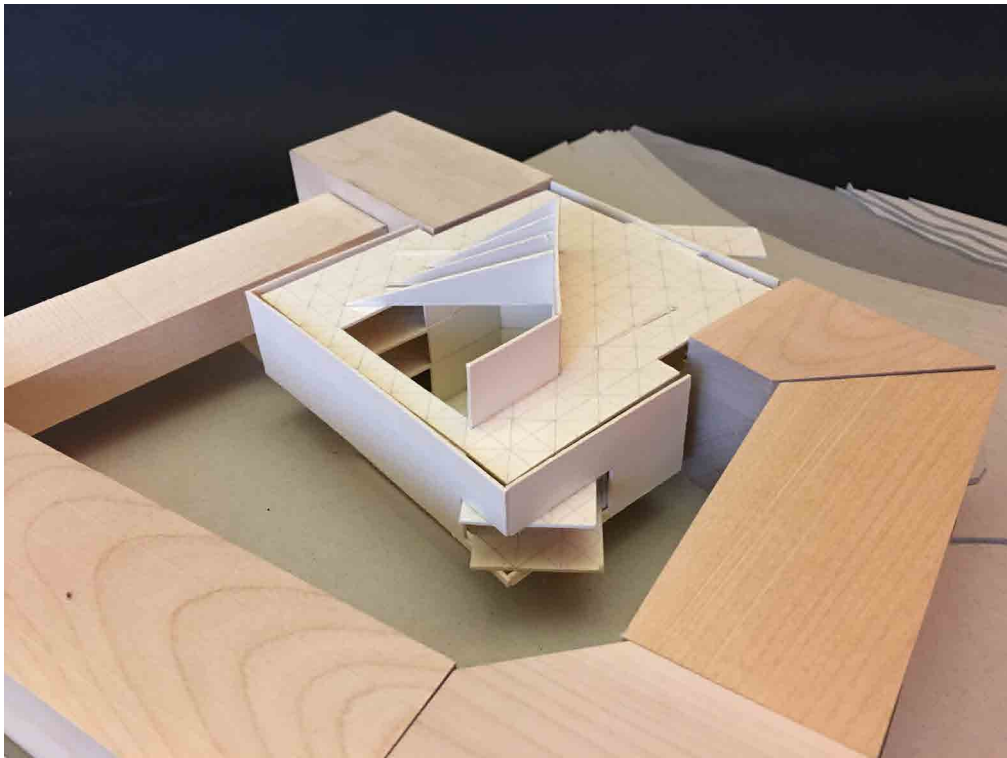
Spatial study on site



Concept sketch



Spatial study on site



Spatial study on site

