

ENTRANCE:

- 1. SECURITY PORTAL 20m²
- 2. ARRIVAL AREA 14m²
- 3. VISITATION 10m²
- 4. CONVERSATION ROOM 10m²

EMPLOYEE ONLY:

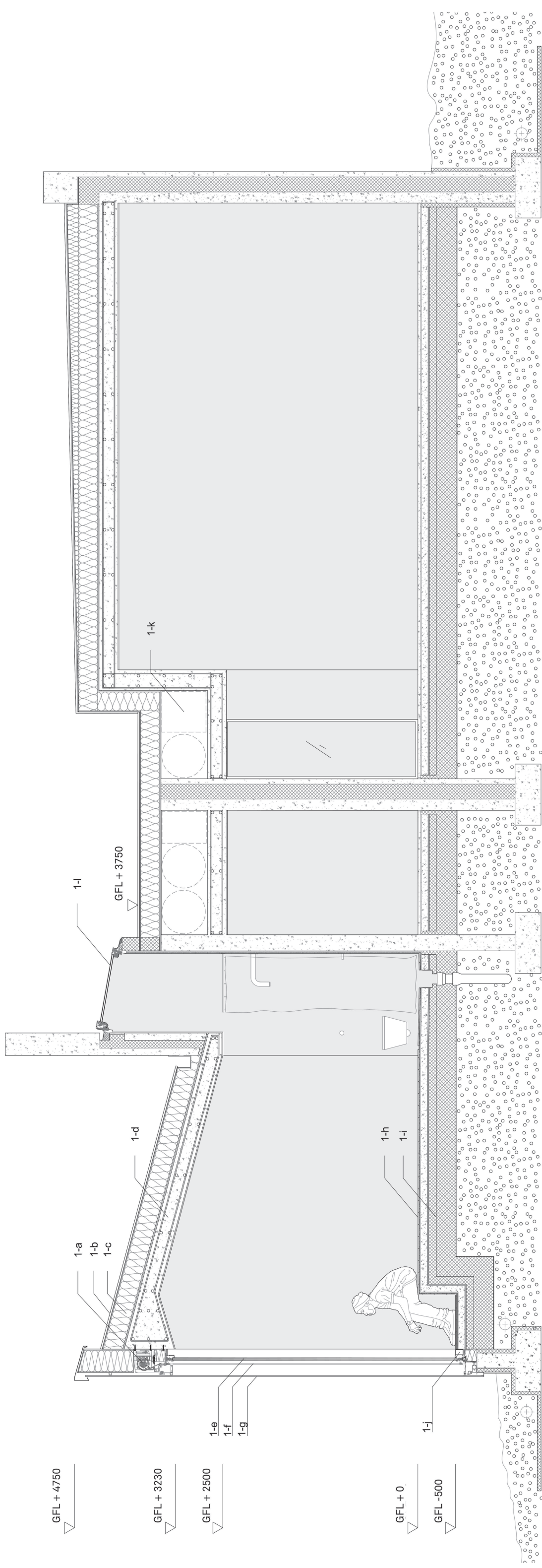
- 5. SECURITY ROOM 1 30m²
- 6. SECURITY ROOM 2 + TOILET 40m²
- 7. STORAGE/TECHNICAL 4,5m²
- 8. WARDROBE 20m²
- 9. COPY/PRINT 4m²
- 10. WC 8m²
- 11. SINGULAR OFFICE 10m²
- 12. SINGULAR OFFICE 10m²
- 13. SINGULAR OFFICE 10m²
- 14. MEETING/LUNCH 40m²

EMPLOYEE + INMATE:

- 15. HCWC 6m²
- 16. KITCHEN 20m²
- 17. STORAGE 4m²
- 18. OUTDOOR AREA 1 50m²
- 19. MULTI-FUNCTIONAL SPACE 1 85m²
- 20. MULTI-FUNCTIONAL SPACE 2 70m²
- 21. SITTING AREA/BUFFER ZONE 1 18m²
- 22. CLEANING/STORAGE 5m²
- 23. TOILET 2,5m²
- 24. SHOWER 2,5m²
- 25. SITTING AREA/BUFFER ZONE 2 30m²
- 26. CONVERSATION ROOM 9m²
- 27. HCWC 6m²
- 28. THERAPY ROOM 10m²
- 29. SMALL M.F.SPACE/STORAGE 10m²
- 30. MULTI-FUNCTIONAL SPACE 3 58m²
- 31. COURTYARD/SENSING SPACE 420m²

INMATE:

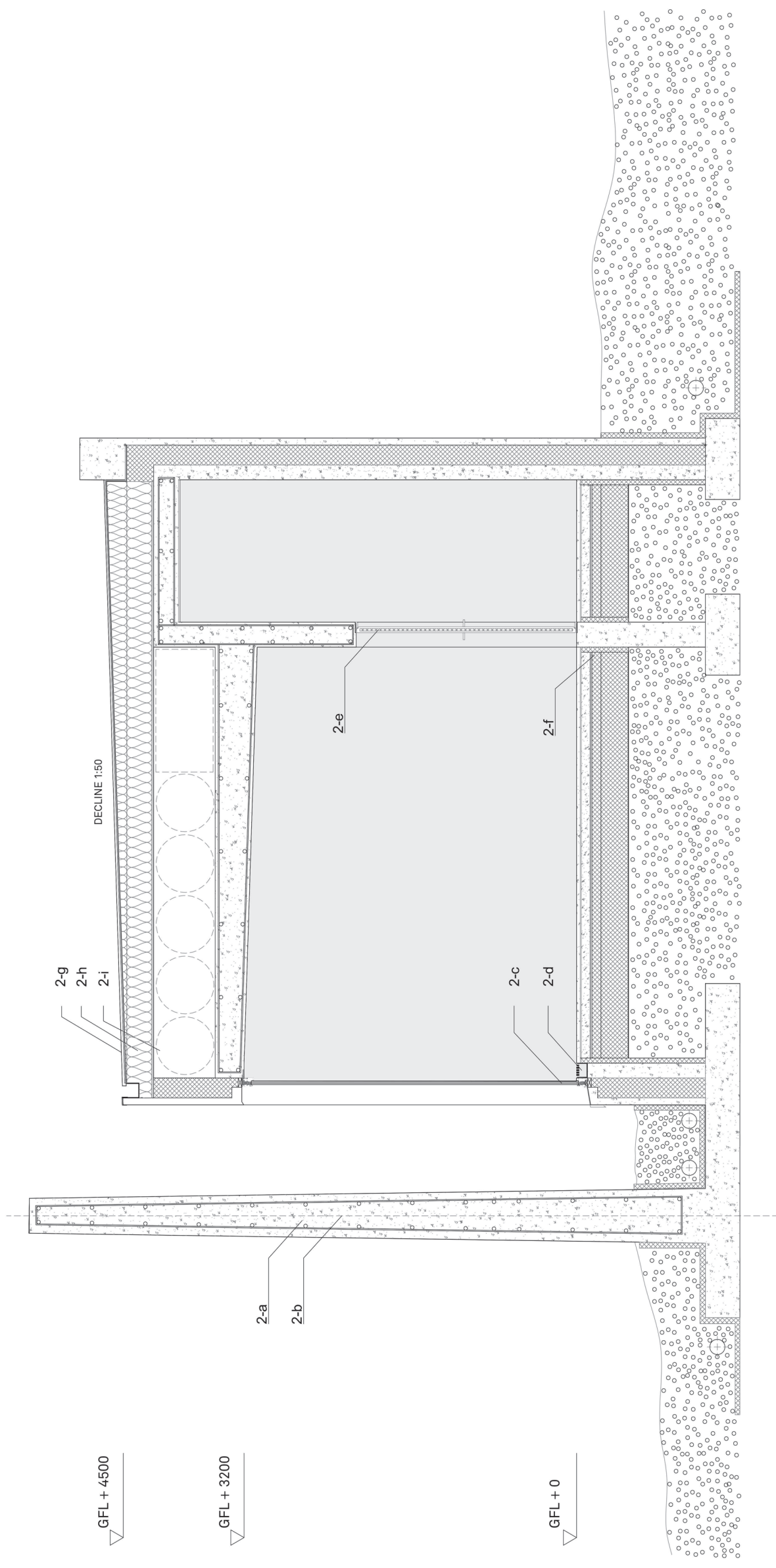
- 32. CELL + TOILET 1 15m²
- 33. CELL + TOILET 2 15m²
- 34. CELL + TOILET 3 15m²
- 35. CELL + TOILET 4 15m²
- 36. CELL + TOILET 5 15m²
- 37. CELL + TOILET 6 15m²
- 38. UU-CELL + UU-TOILET 16m²
- 39. CELL 1 8m²
- 40. CELL 2 8m²
- 41. CELL 3 8m²



- 1-a El- controlled solar shading system (motor)
- 1-b Roof covering (PVC)
- 1-c Insulation 250mm
- 1-d Enforced concrete ceiling 230mm
- 1-e Security glass (11+11mm)
- 1-f Blind (Alu. blade 12mm)
- 1-g Laminated glass 6+6mm
- 1-h Floor heating/floor (water proof construction)
- 1-i Insulation 350mm

Drawing reference: D1 (d)

Scale: 1 : 50 A3



- 2-a Enforced concrete wall w=200 - 450mm
- 2-b Post-tension cable
- 2-c Laminated security glass 4+4mm
- 2-d Ventilation grille
- 2-e Soundproof door
- 2-f Insulation 350mm
- 2-g Roofing (PVC)
- 2-h Insulation 250 mm
- 2-i Technical/Ventilation

Drawing reference: D2 (detail 2)

Scale: 1 : 50 A3

