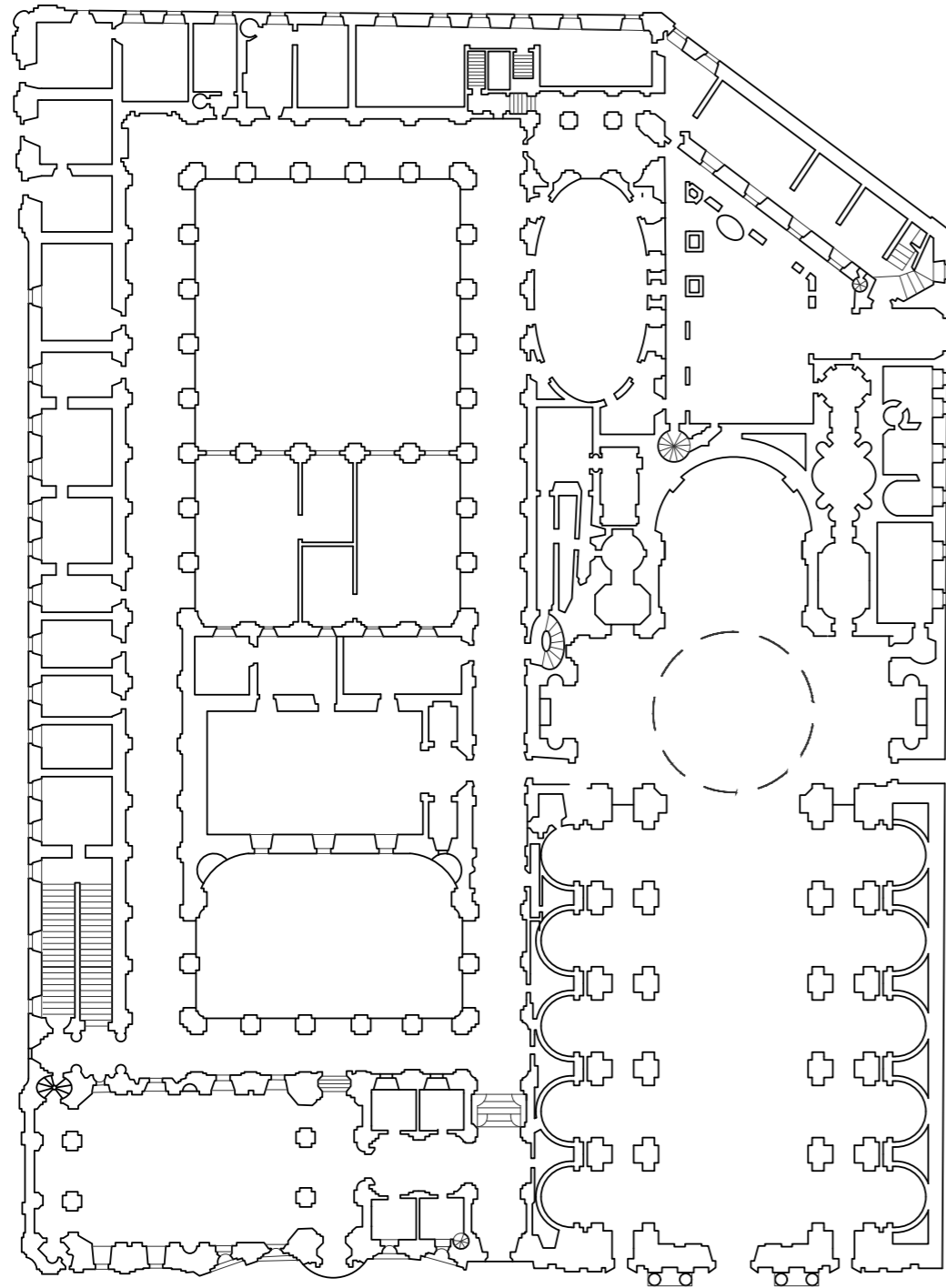


# Censors Booklet

Søren Olav Saanum Bessesen

## Content

1. Introduction
2. Site and program
3. Project
4. Process

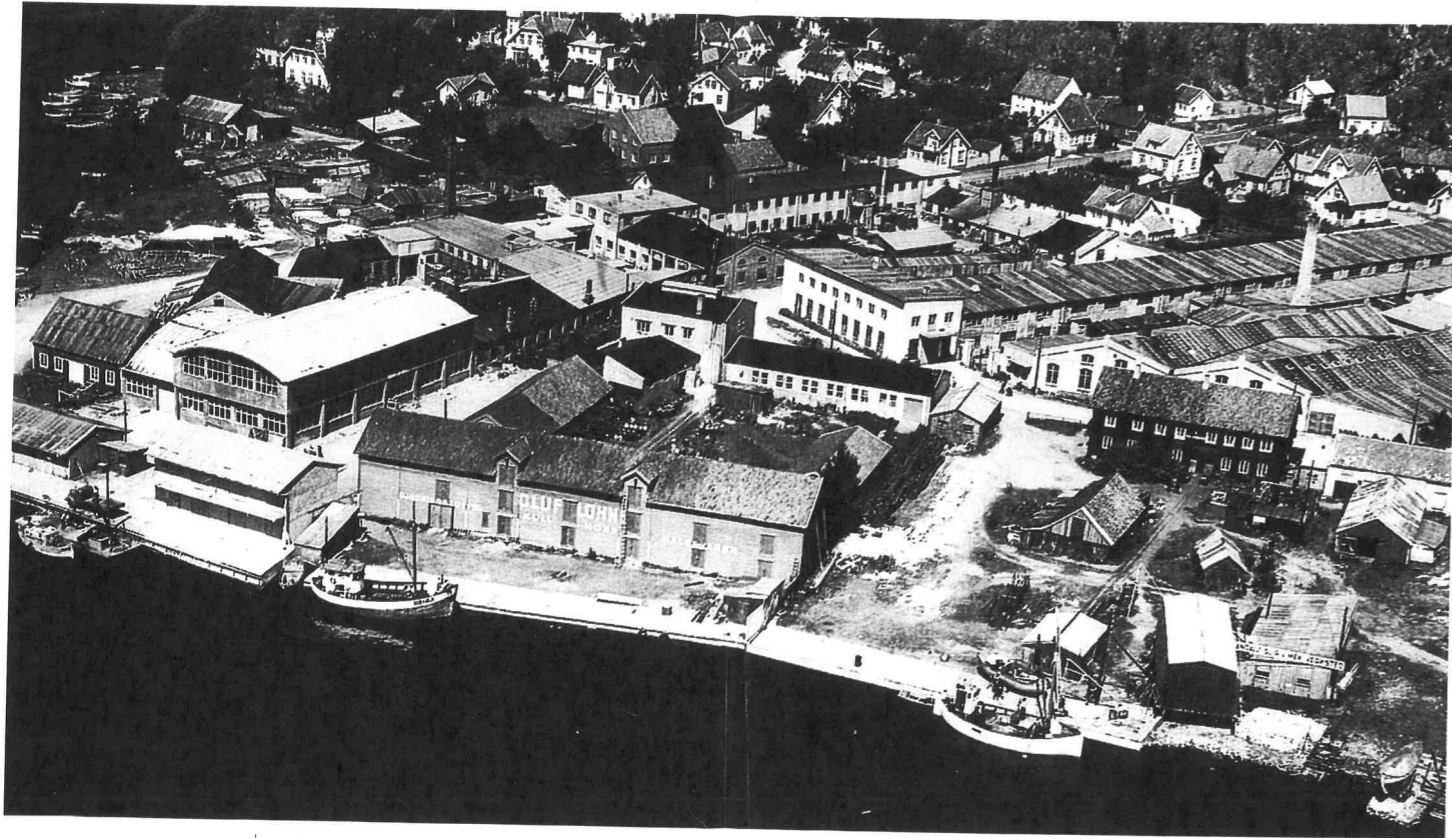


I started this project with writing an essay on typology within the framework of the A1 Space and Technique unit. In this essay I wrote about buildings that I categorized as *ensembles* - buildings that are collages of several distinct parts that together constitute a whole.

A starting point for this interest was the Casa dei Filippini in Rome by Francesco Borromini. I was fascinated by it because it is both one and many buildings at once.

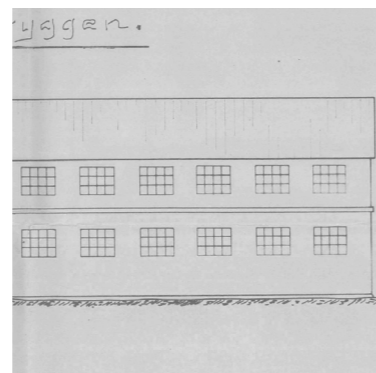
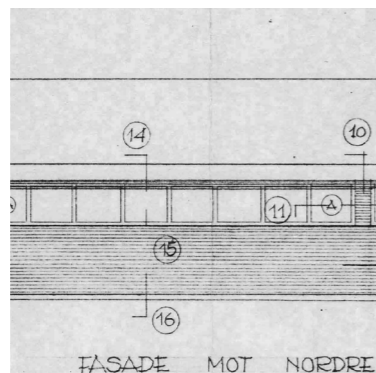
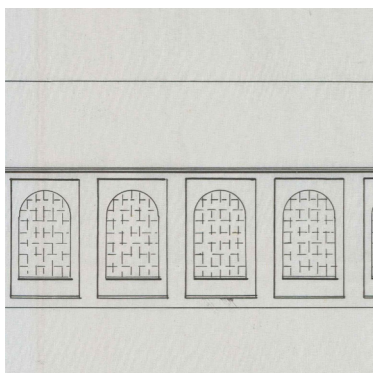
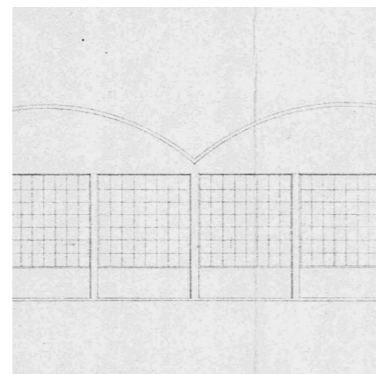
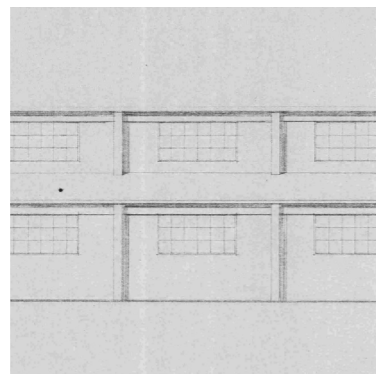
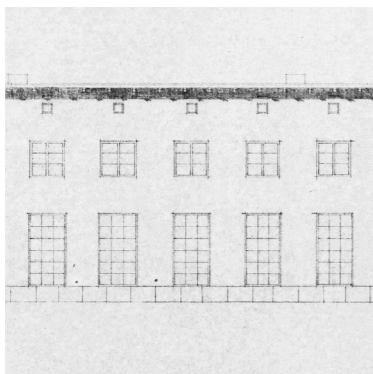
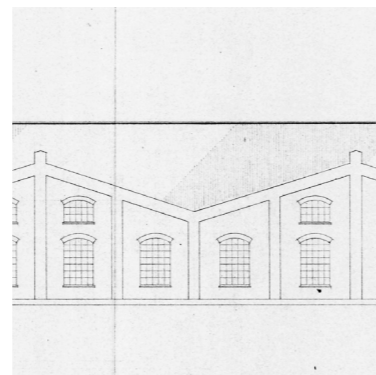
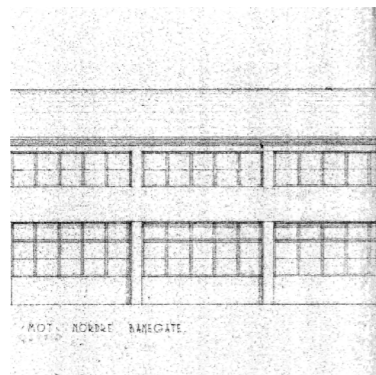
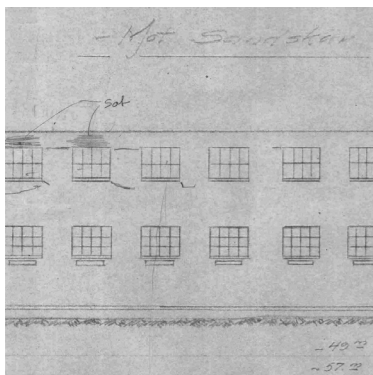
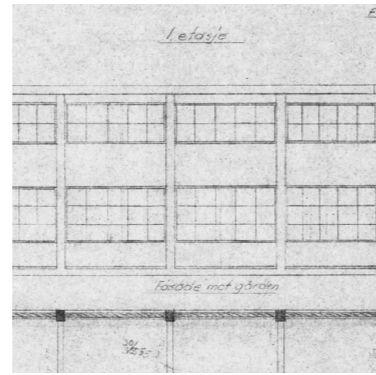
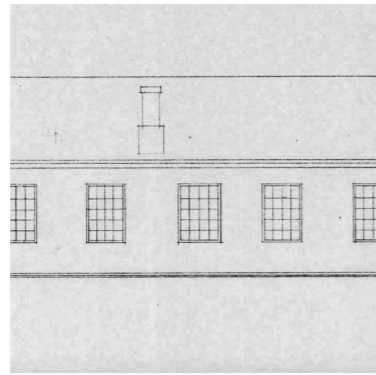
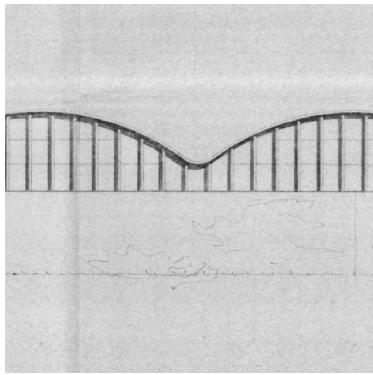
This project represents an approach towards building in the city which is about inclusion and continuity - negotiations with existing situations. It has evolved over time, but there are no obvious distinctions between old and new. Everything is seamlessly tied together both in plan and elevation.

I wanted to work with this approach in a context, and chose my site and program with this in mind.



early industrial  
young town

The site of my diploma is in a former industrial area in the town of Mandal, in the south coast of Norway. It is situated along the river, on the opposite side of the town center. The area has been the center of the towns industry for centuries, as it is well connected with both the harbour and the resources of the river.



I started with looking at the area as a whole, studying the existing buildings through plans and elevations. I found that what might appear as a mess viewed from above is actually structured upon a simple rule; repetitive systems joined together. The area is a collage.

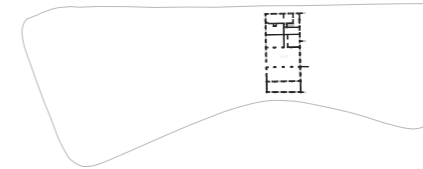
Facades in the area



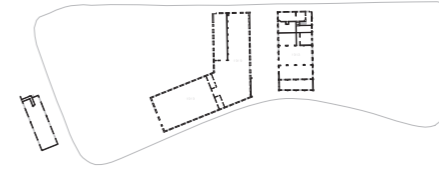
I chose a site for my project which is a long block that is in between the new development and the old industry buildings. I first worked with the whole length of the block before I made the choice to split it in two and work with the part that is facing the river.



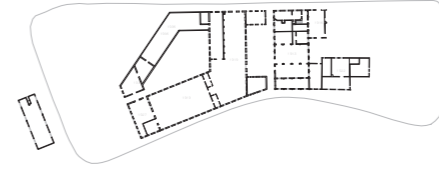
Current situation



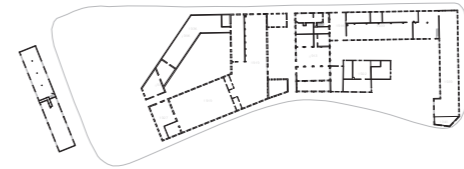
1913  
-1919



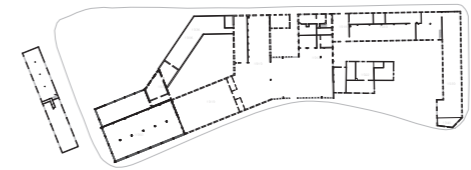
1919  
-1939



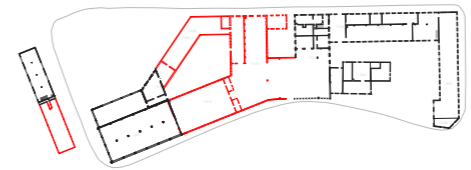
1939  
-1950



1950-  
1959



1960-



buildings I demolish



my project

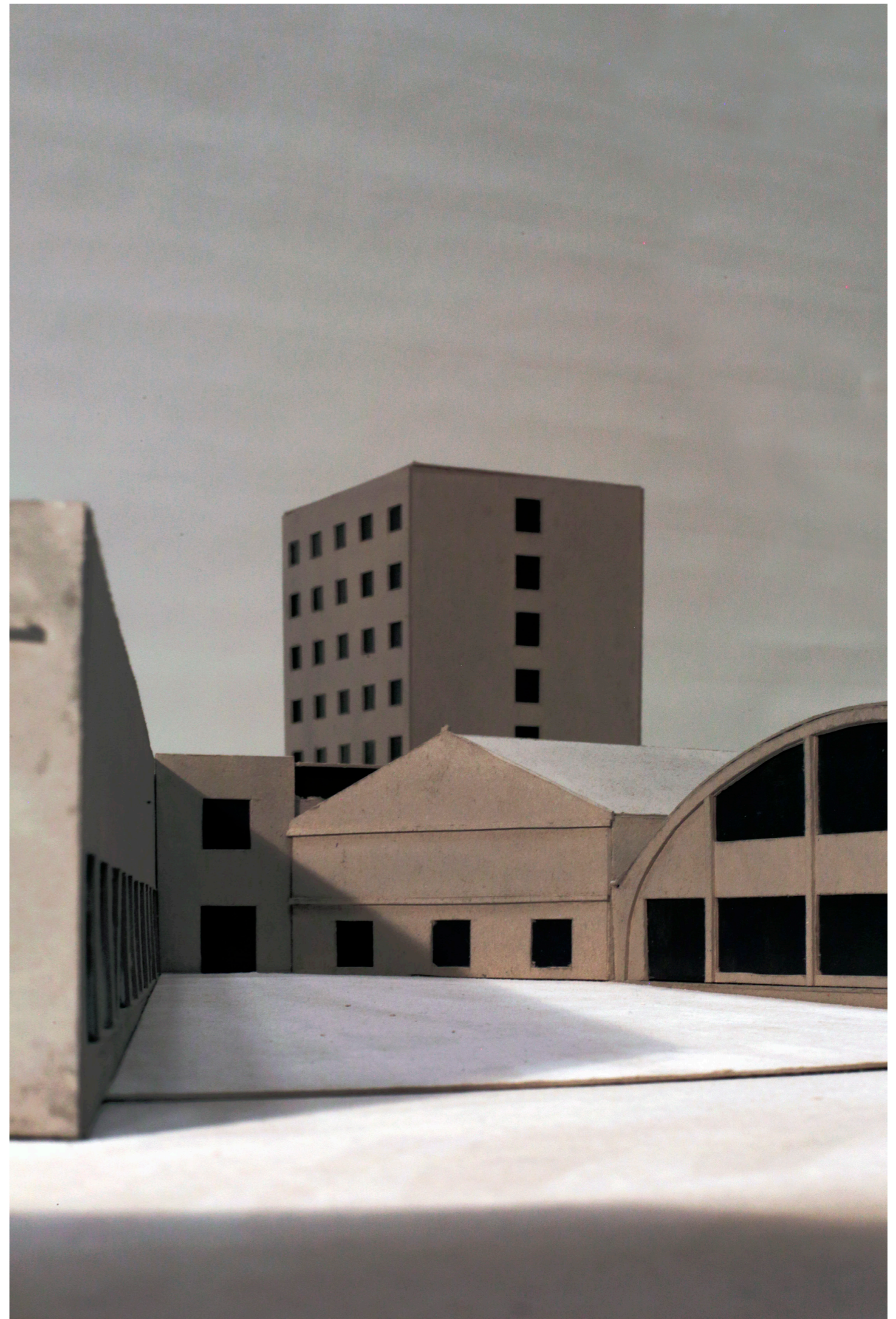
Site development through  
time.

The program is also a collage.  
As a part of the new development, the town is planning to build an innovation center in the area that would house different types of offices, a part of the regional university and a creative folk high school. This center is supposed to be a gathering point where industry meets education, and where knowledge and resources would be shared. I found that this program fits well with the theme of my diploma as it is a community that joins different institutions together. I did not work with a specific room program, only with an idea about the different functions of such a center.



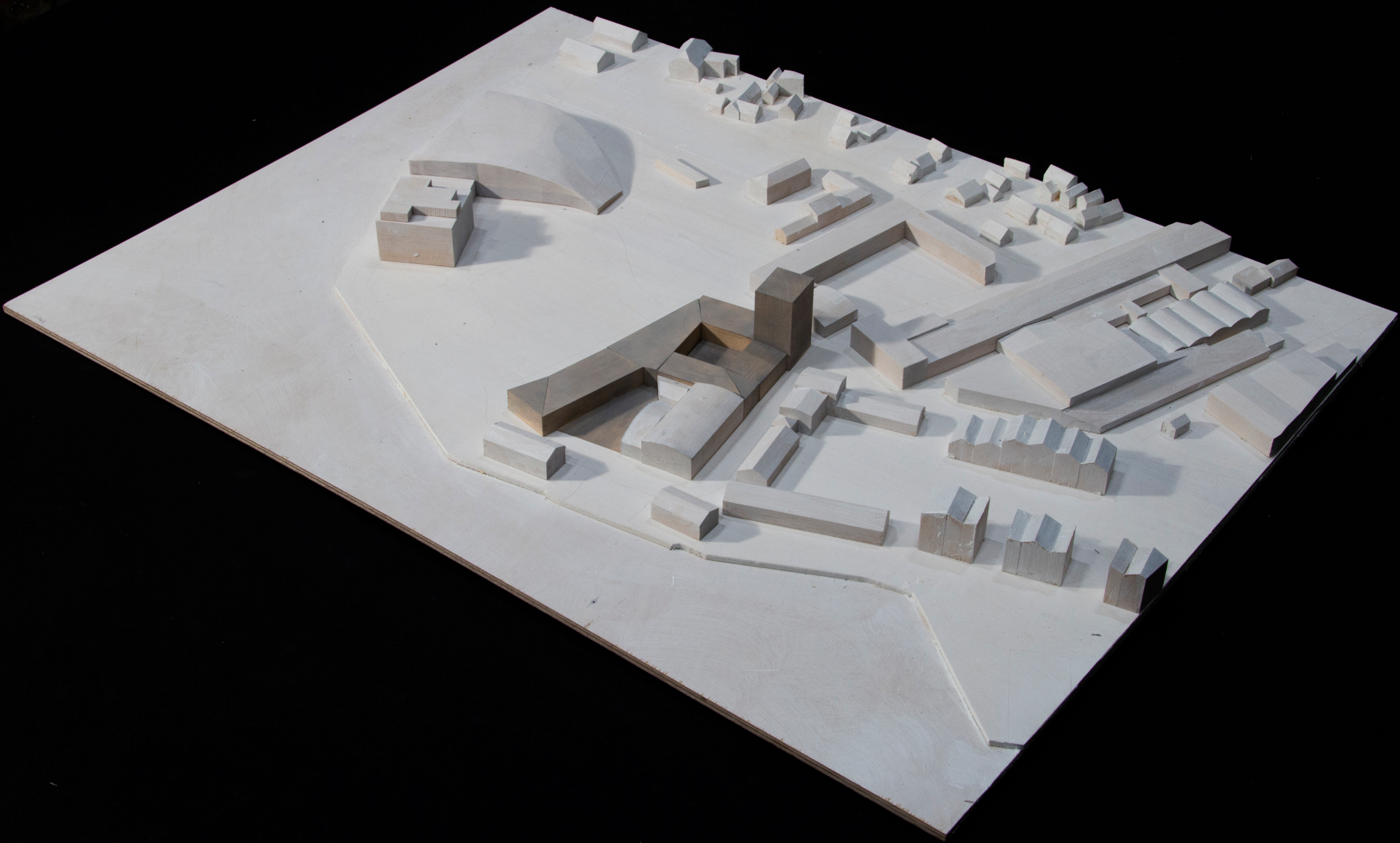


PROJECT

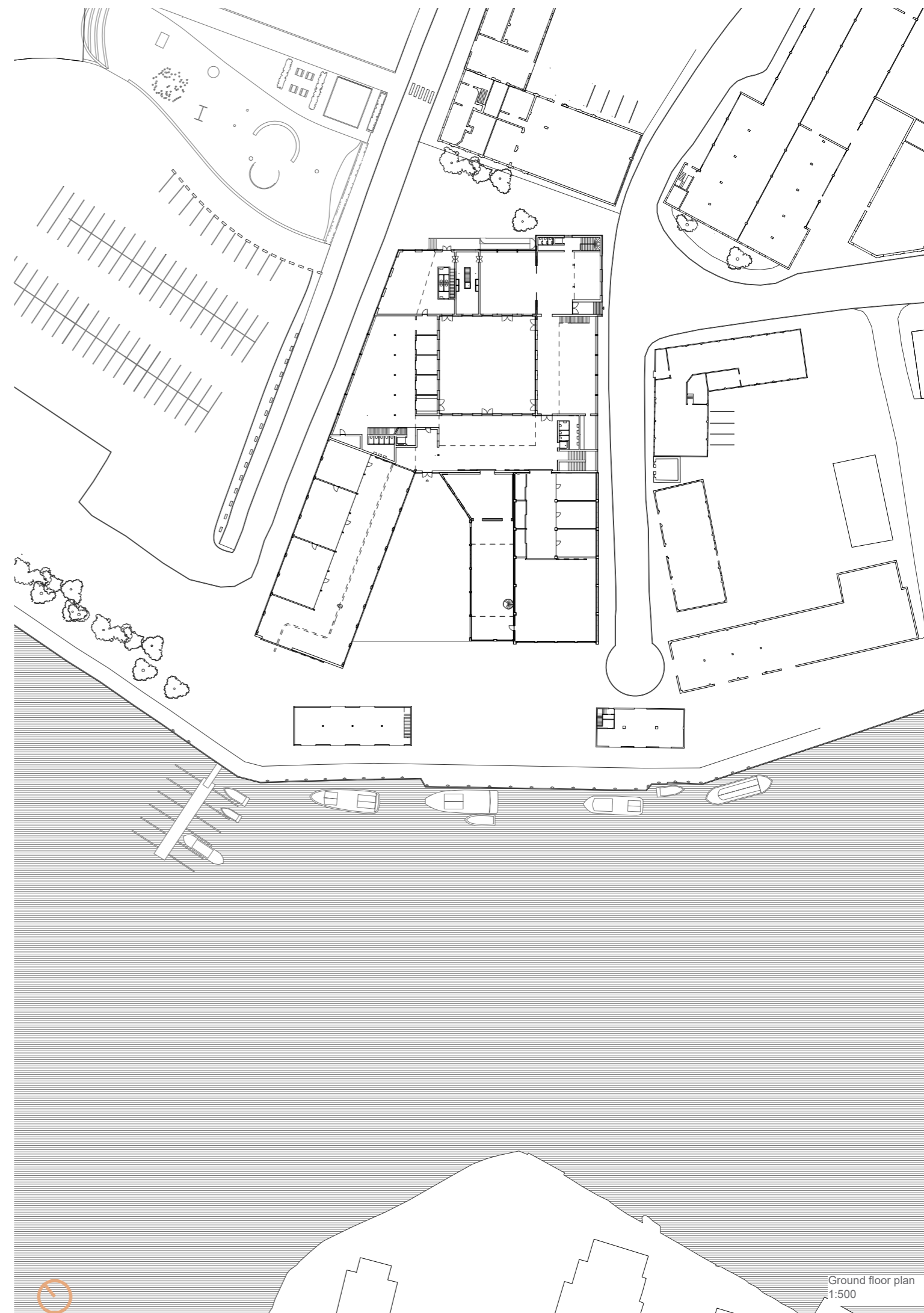


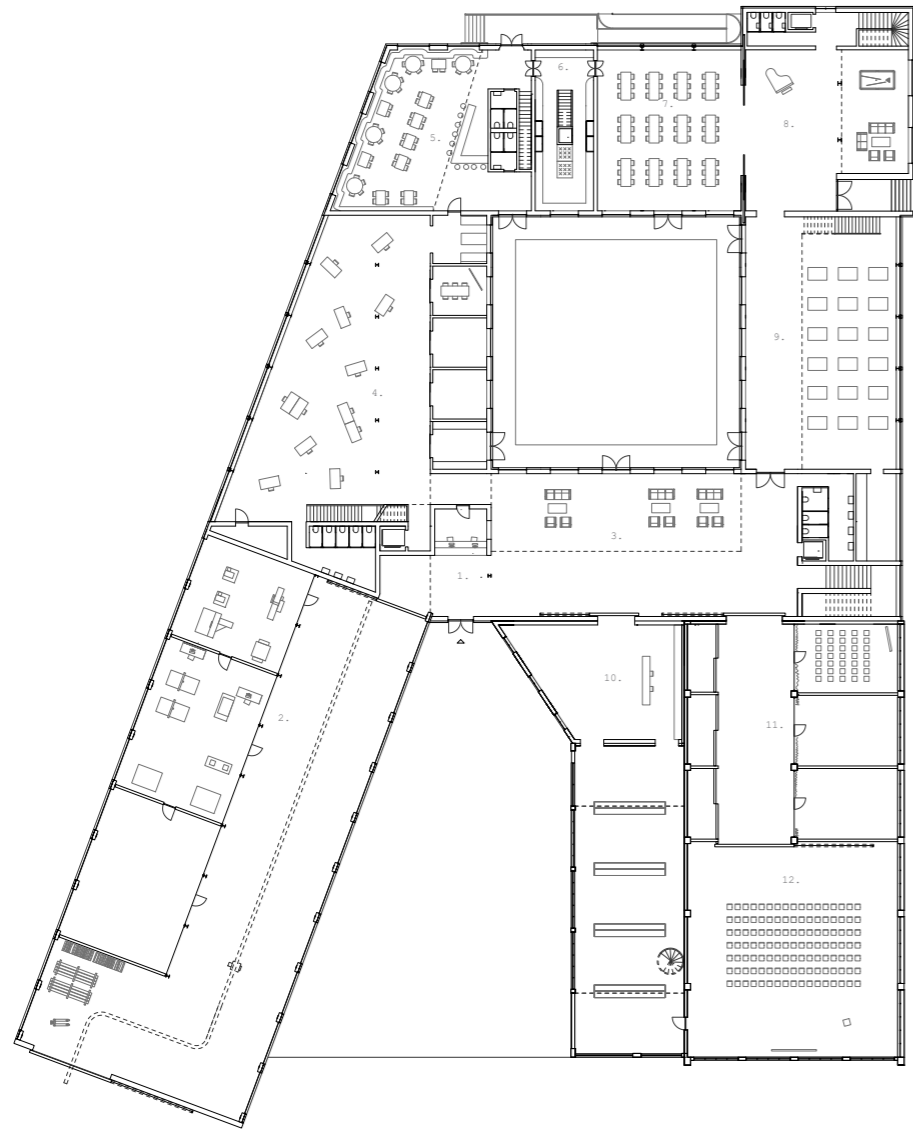
The project has two courtyards - one that opens up towards the river and one that is enclosed by the building.



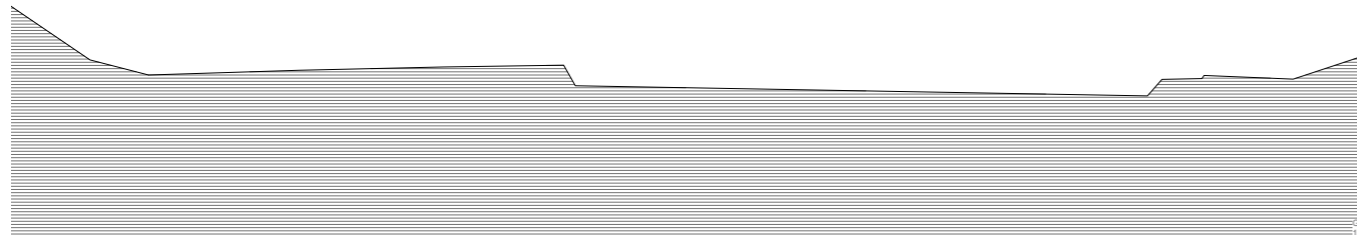
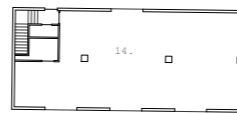


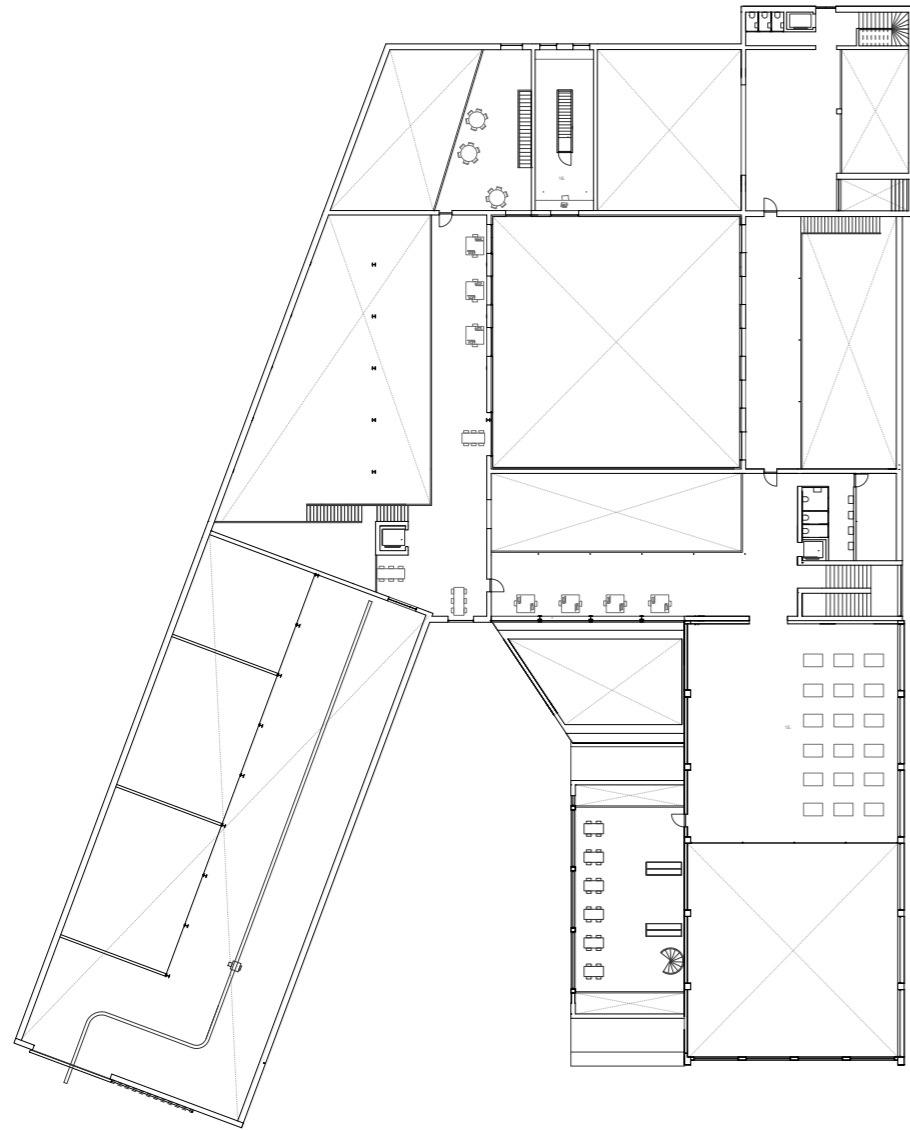
I have aimed to make the building contribute to a larger whole, and to think about each part of the perimeter in relation to its context.



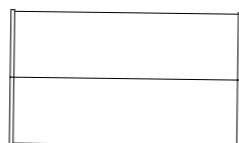
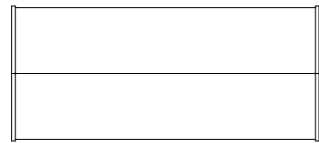


My goal was to make each space a distinct part of the building.





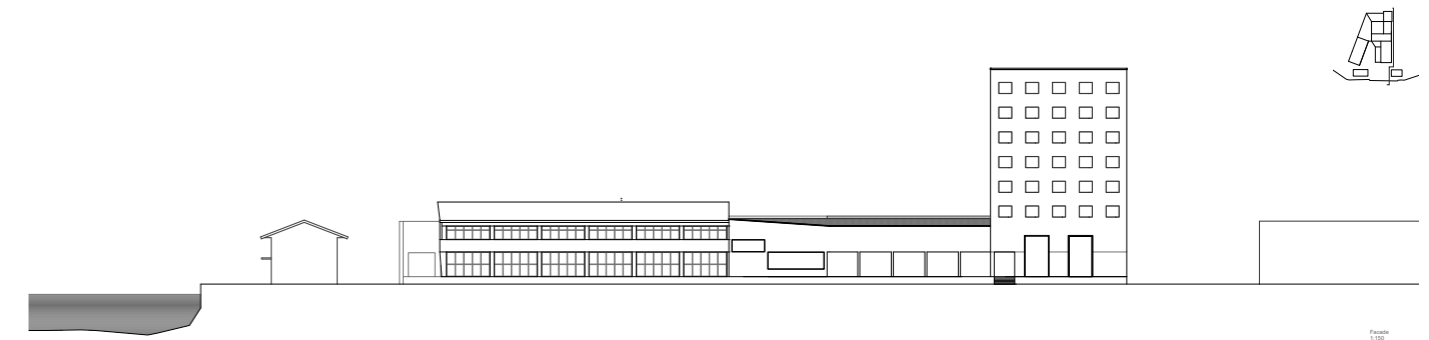
Level two is a continuous mezzanine that create a secondary circulation and working space which is more intimate.

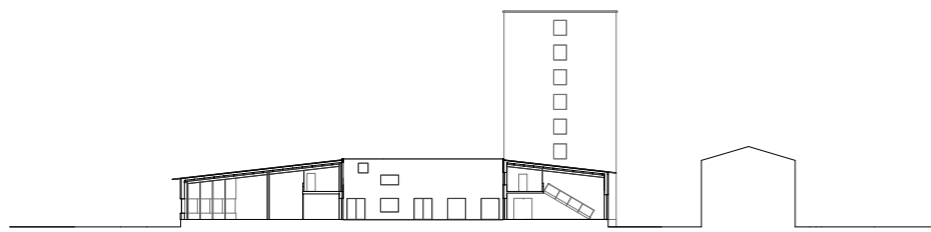


1. Reception
  2. Workshops and assembly hall
  3. Foyer
  4. Coworking office
  5. Cafe/ workers cantine
  6. Kitchen
  7. Students dining hall
  8. Students social
  9. Studio
  10. Library
  11. Classrooms and storage
  12. Auditorium
  13. Restaurant
  14. Office
  15. Studio
  16. Kitchen office
- Tower: student housing



The project is lifted up on a 0.9 m high base. In the existing buildings the floor is lifted to this height. In the open courtyard, the ground is a ramp that inclines towards the entrance door.





Section  
1/200



Coworking office





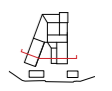
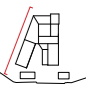
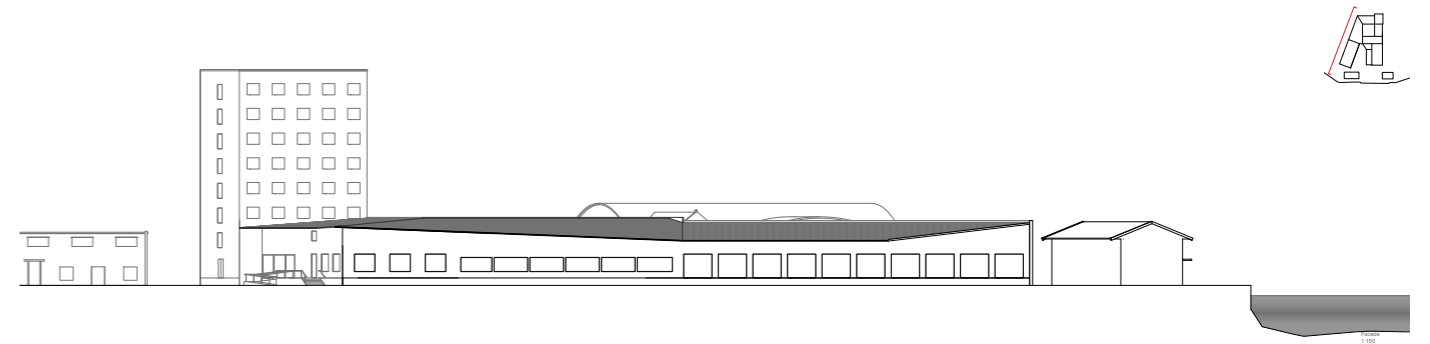
Foyer



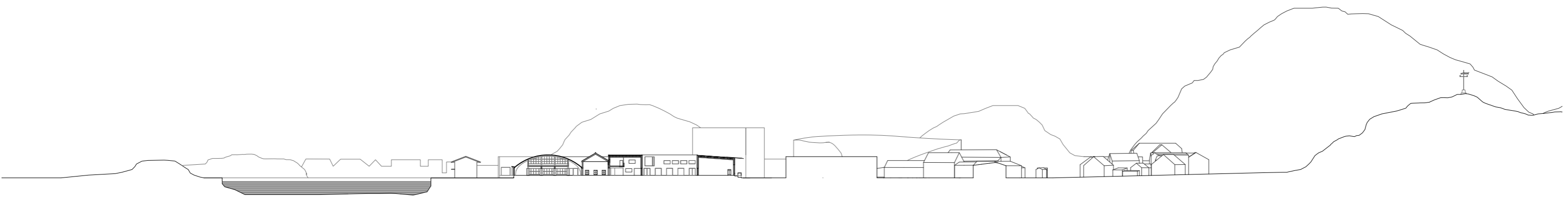
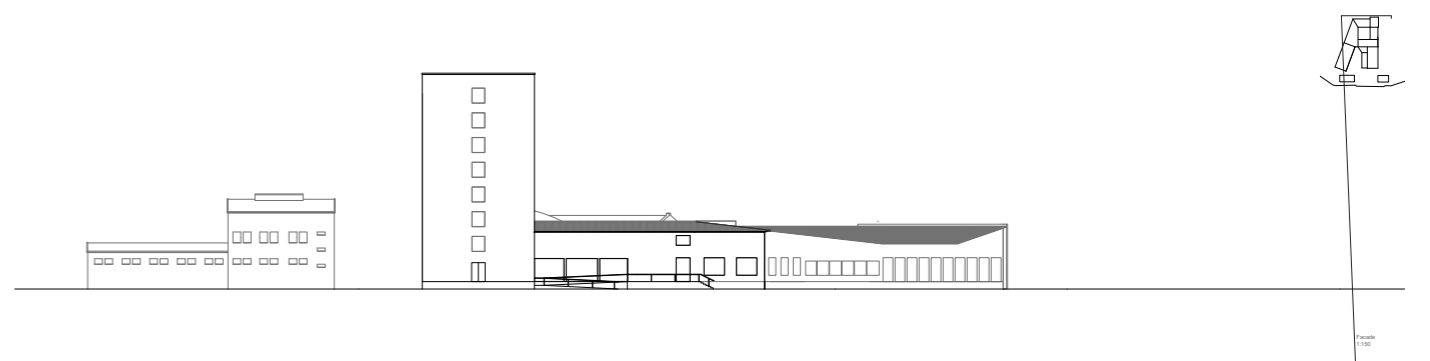
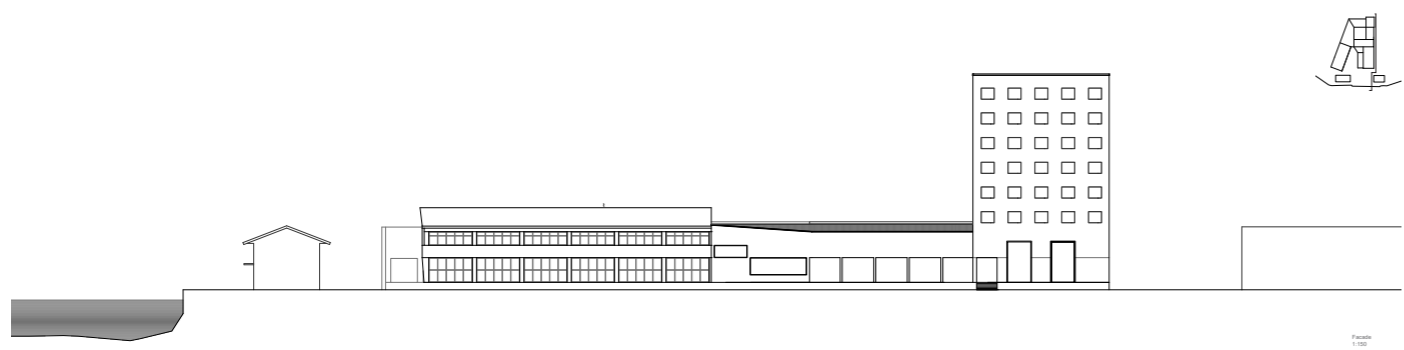
Section  
1/100

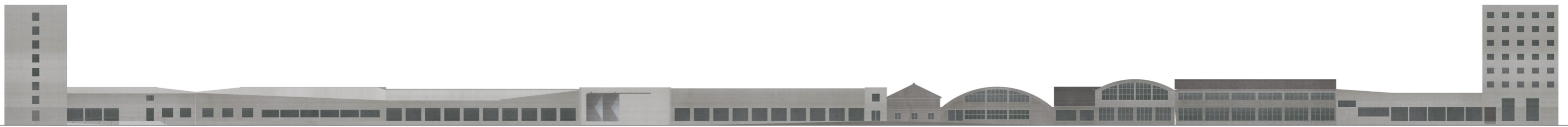


Construction hall



Section  
1:100







PROCESS



