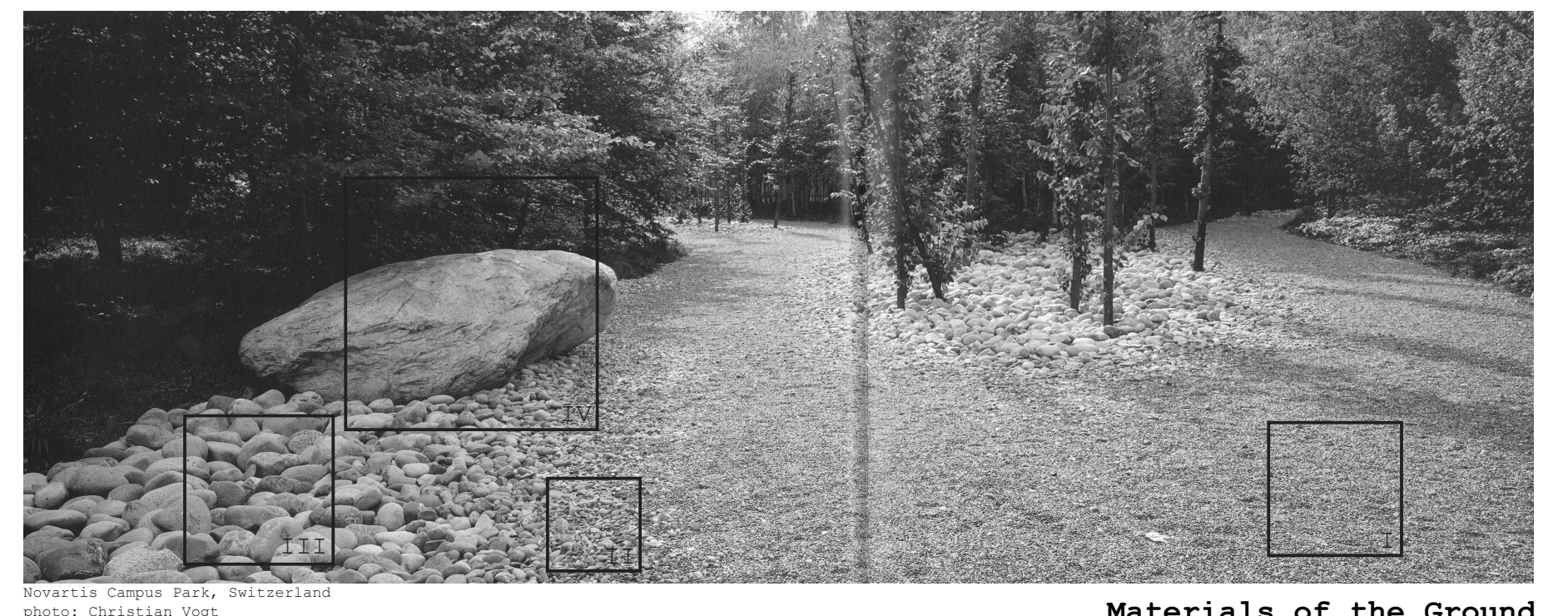
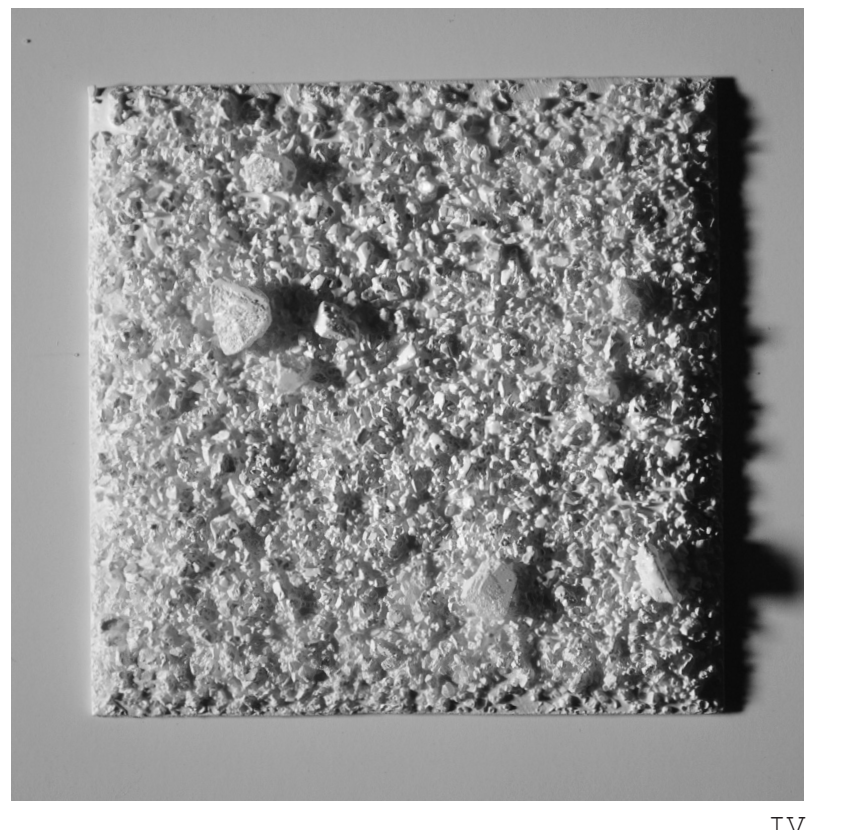
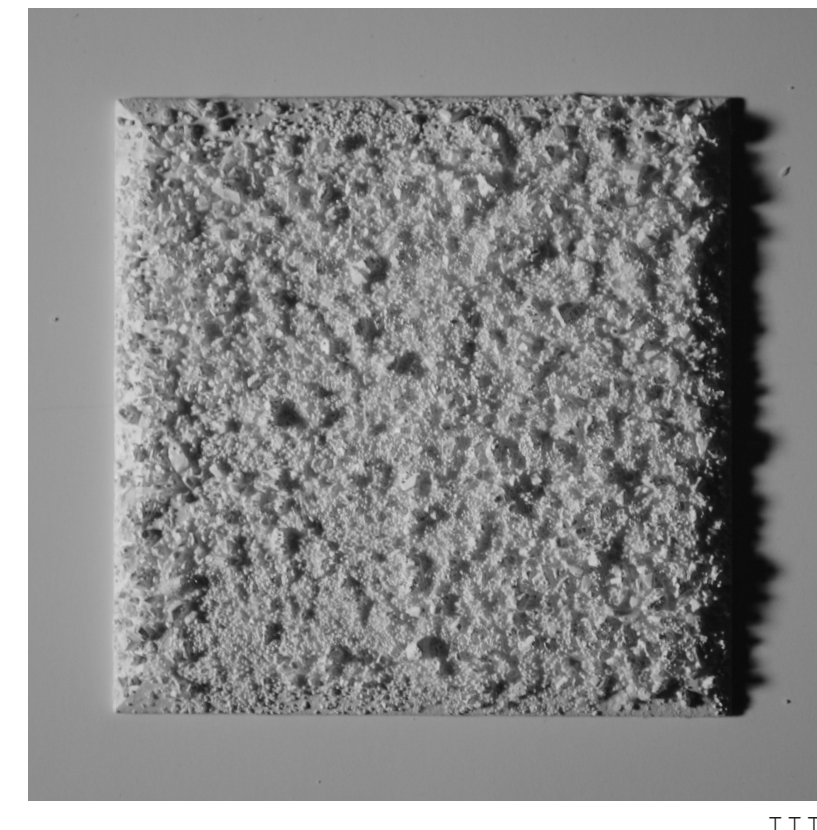
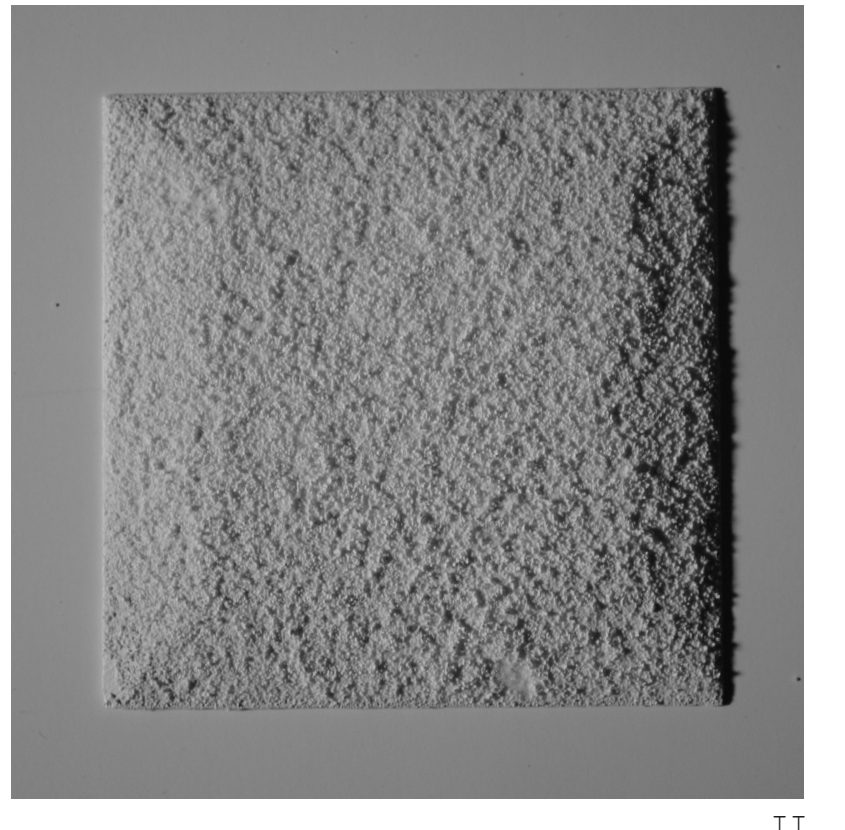
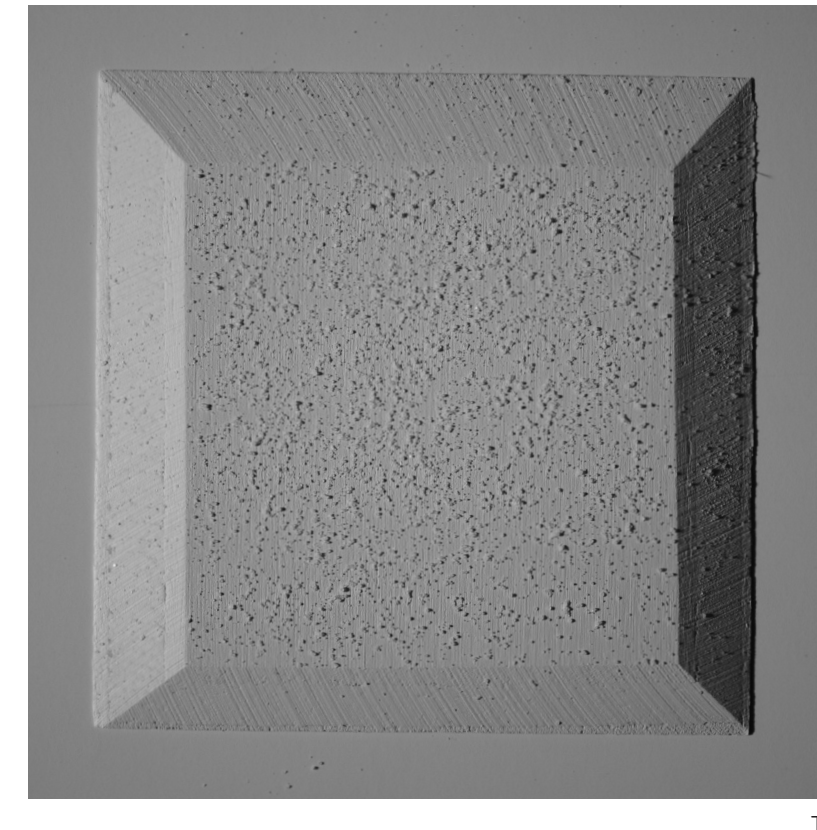
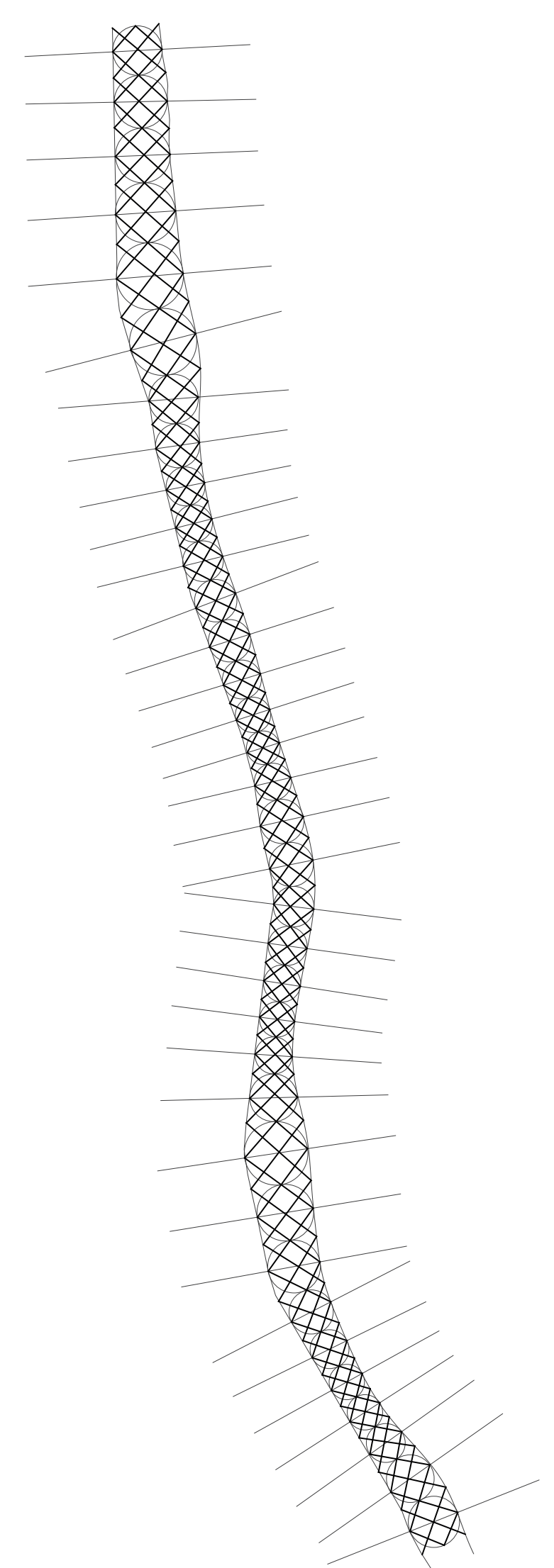


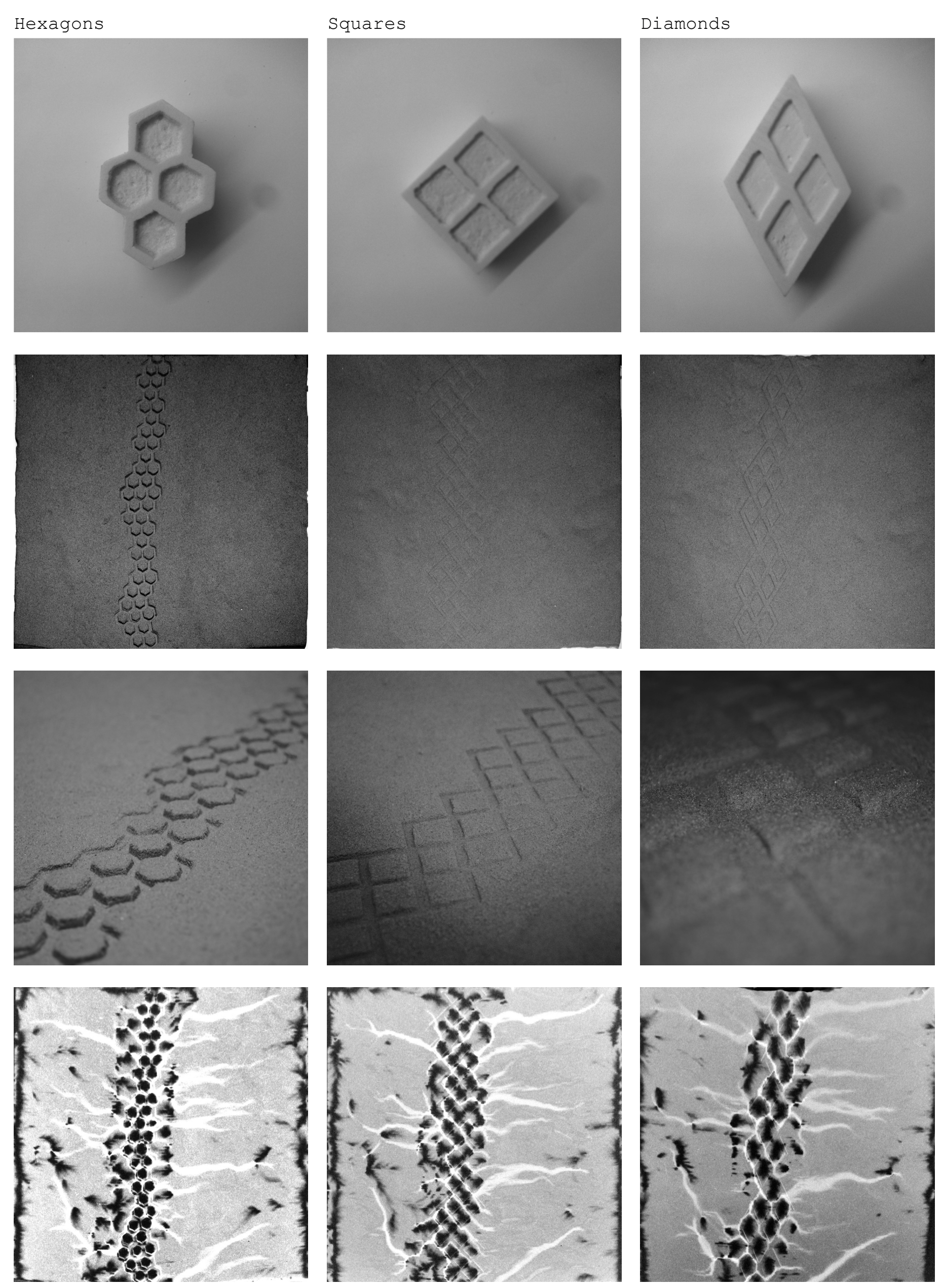
Elements

Strategy

Slopes



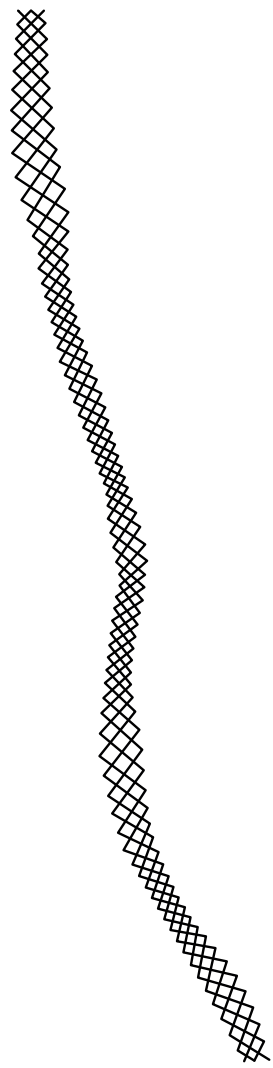
Geometry



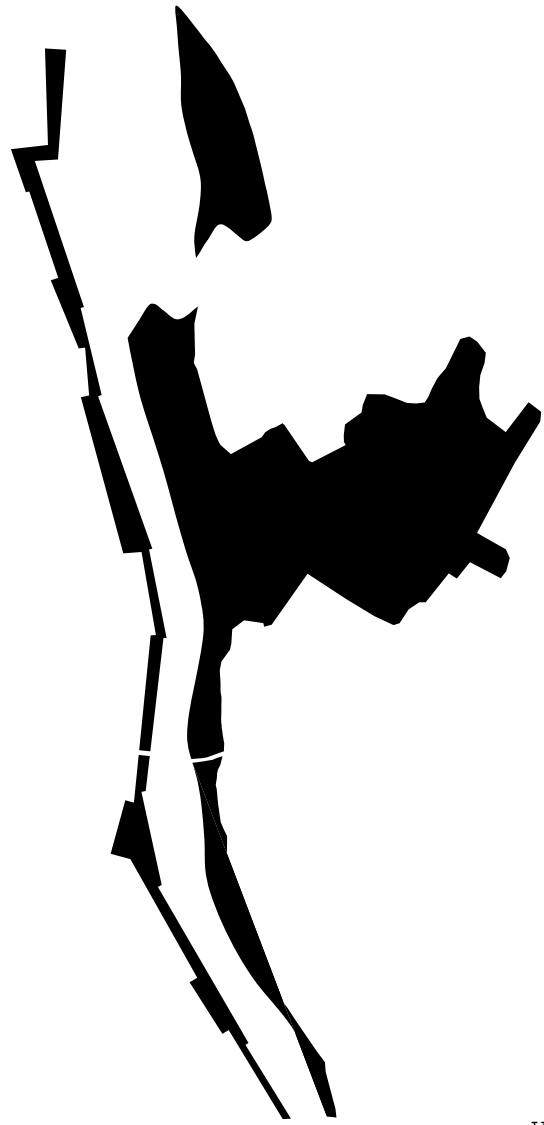
Dimensions and Activities

Forms and Waterflows

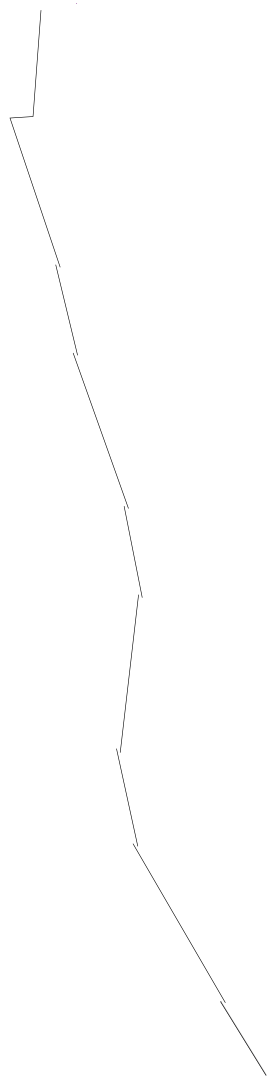
Private/Public Urban Space



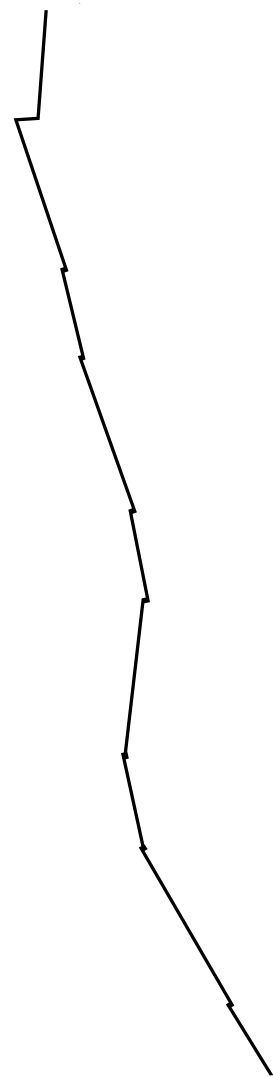
waterway



vegetation



retaining
walls

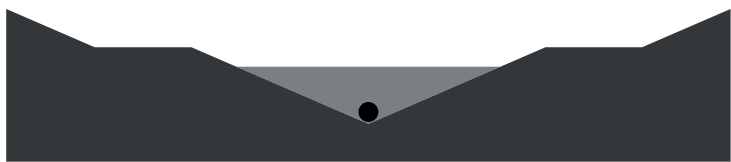
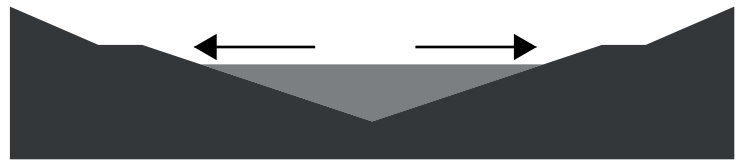


pedestrian
pathway

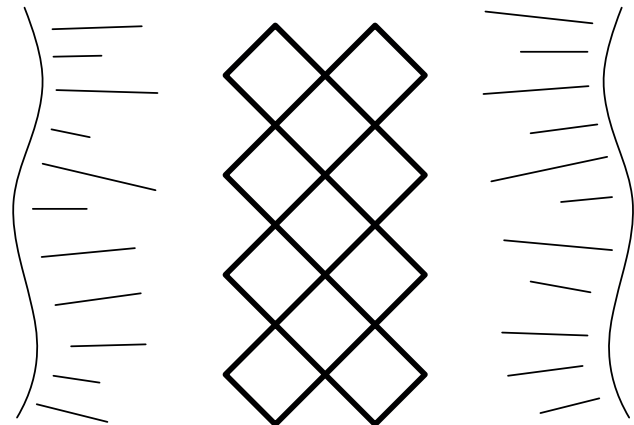
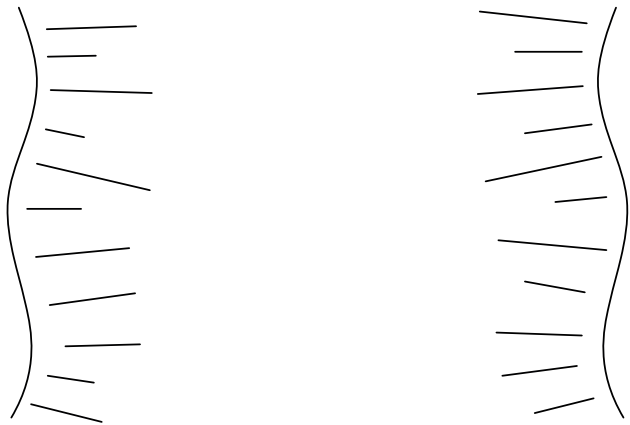
Elements



I - widen the valley space

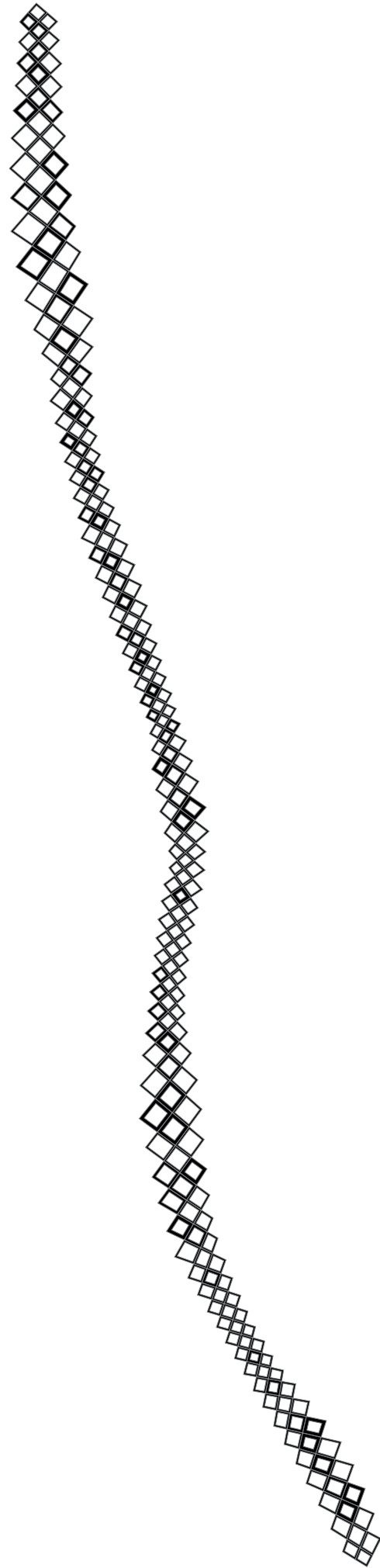


II - bring water flow on surface



III - thicken vegetation edges



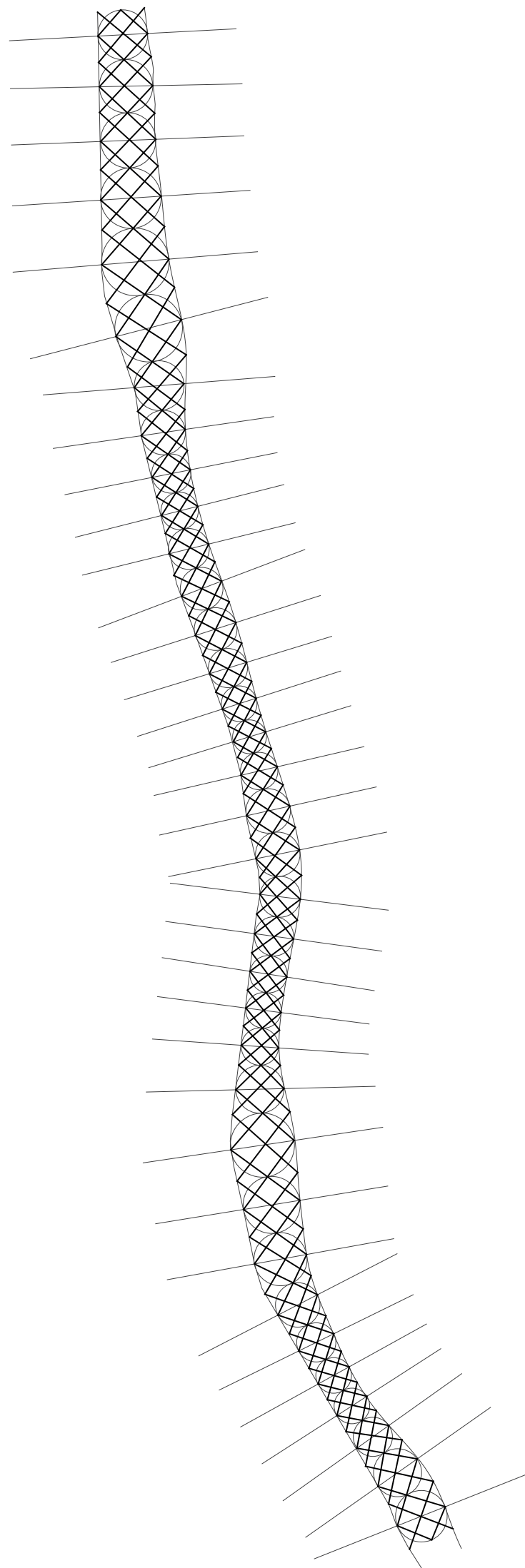


1:2

1:3

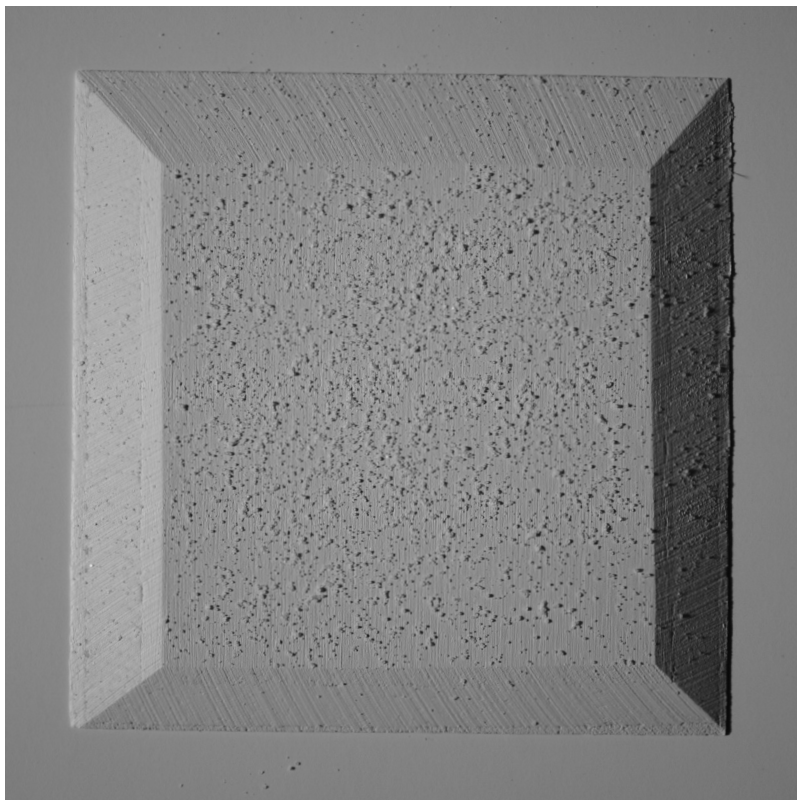
1:4

Slopes





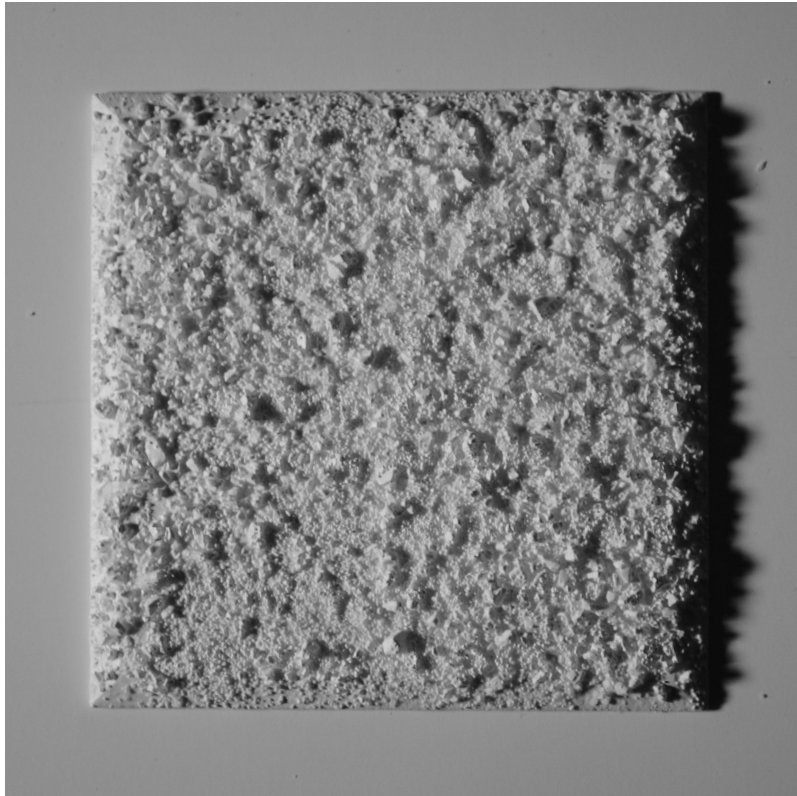
Corridor in the Public Space



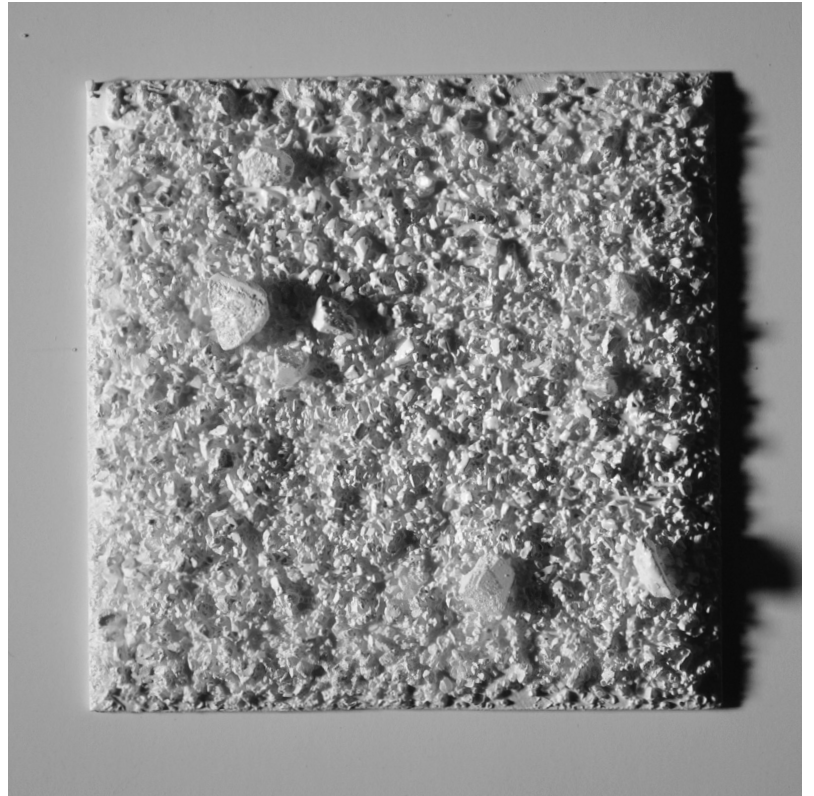
I



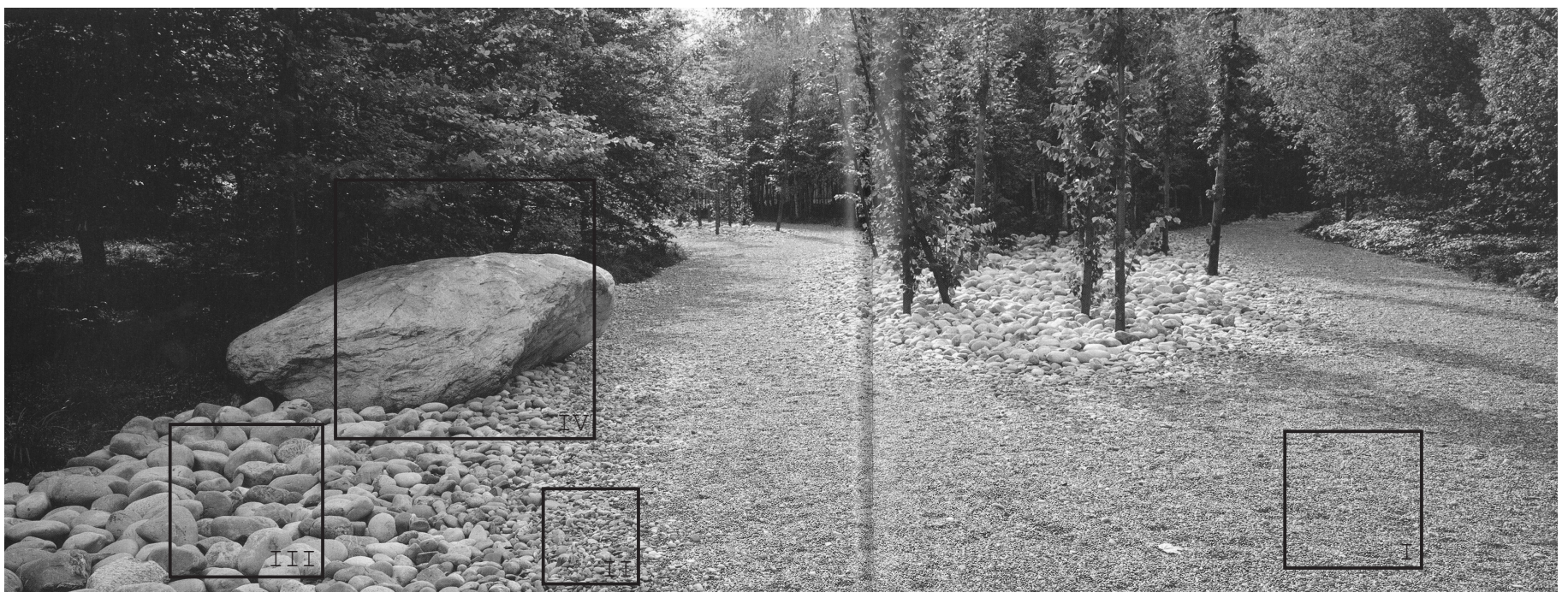
II



III

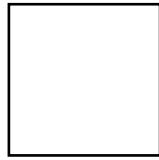


IV

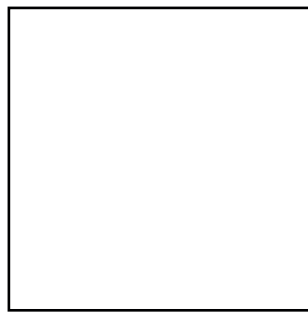


Novartis Campus Park, Switzerland
photo: Christian Vogt

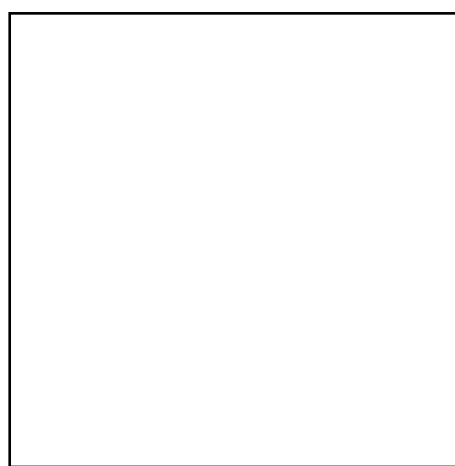
Materials of the Ground



5x5m. intimate.

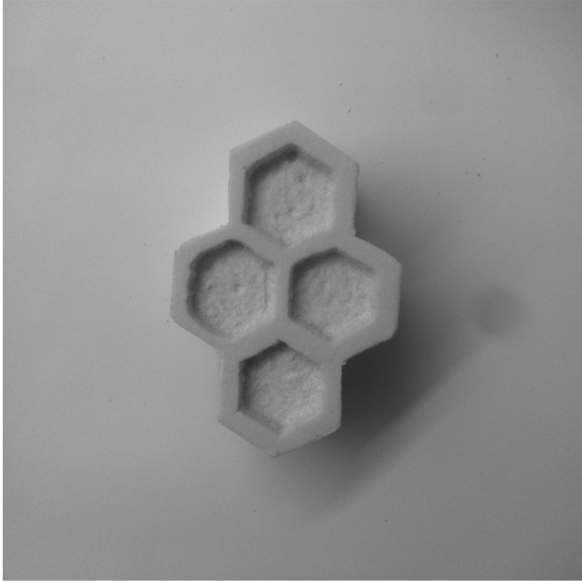


10x10m. group.



15x15m. collective.

Hexagons



Squares



Diamonds

