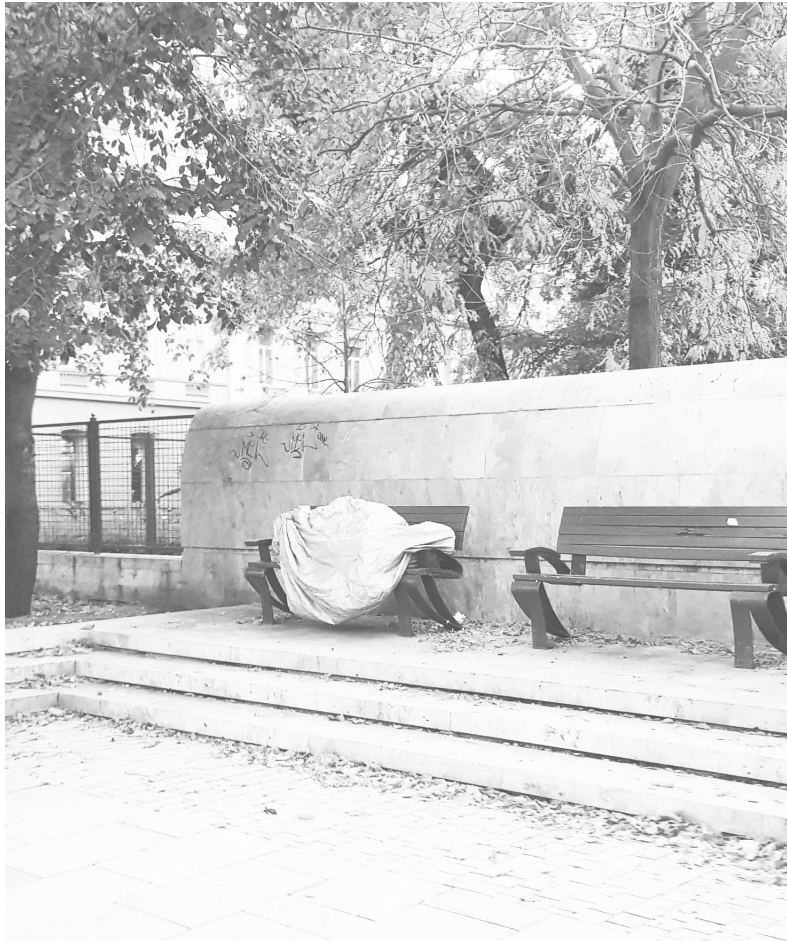


STAY - emergency accommodation for homeless people

IN OSLO



TWO PROBLEMS

WHERE TO STAY ?
WHERE TO SLEEP ?

TWO PROGRAMS

DAYTIME CENTER
EMERGENCY ACCOMMODATION

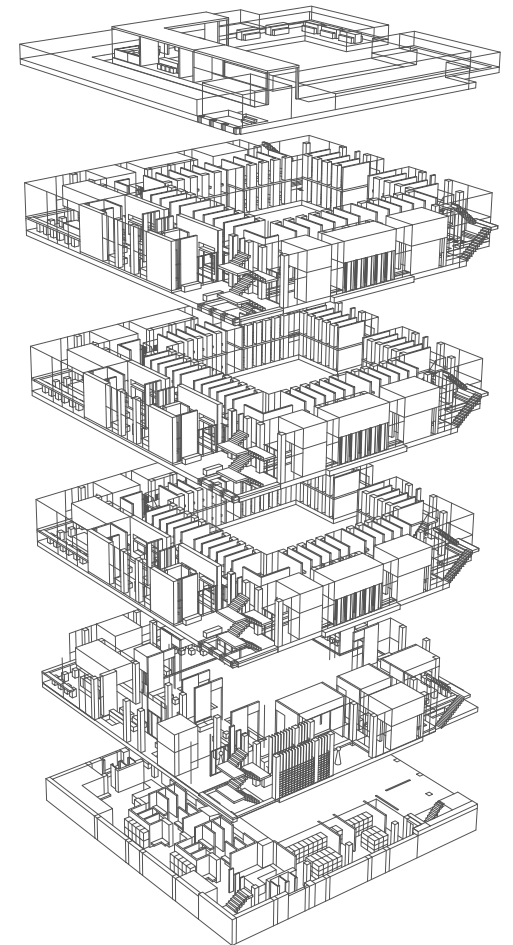
CONTAIN

AREA TO HANG-OUT
AREA TO SOCIALIZE
SPACE FOR LOW
-THRESHOLD EDUCATION
SPACE FOR CONSULTING
TOILETS
KITCHEN
LAUNDRY AREA

SLEEPING FOR WOMEN
SLEEPING FOR MEN
SLEEPING FOR COUPLES
BATHROOM FACILITIES
LOCKERS
SHARED KITCHEN
LAUNDRY AREA

FOR WHO ?

THE PEOPLE "LIVING" ON THE STREET
THE PEOPLE AT THE OUTSIDE OF THE WELFARE SYSTEM
THE PEOPLE WHO HAVE NOWHERE TO STAY



NOISE

LIGHT

MOVEMENT

SPACE-EFFICIENT

VIEW

SIGHT

THE ARRANGEMENT

6 LEVELS

ARCHITECTURAL POINTS

MULTI-USE OF THE WALL

WINDOW SLOTS

LEVEL DIFFERENCES

NICHES

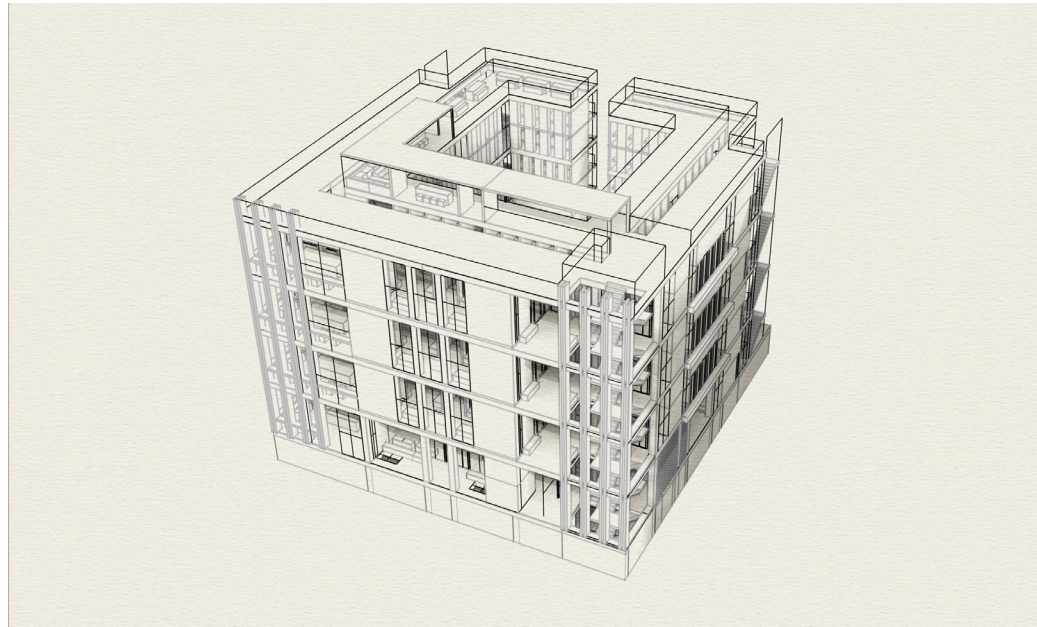
TRANSPARENCY

IN CONTACT WITH

VARIOUS HEIGHTS

OVERVIEW & SIGHT

CIRCULATION



ROOF : CONSERVATORY

1 LEVEL : COUPLE SLEET

2 LEVELS : SINGLE SLEEP

GROUND : DAYTIME CENTER

BASEMENT : LAUNDRY

TIME PERSPECTIVE

AN IMPORTANT IDÉ THAT THE EMERGENCY ACCOMMODATION WORKS WELL AS AN "REGULAR HOSTEL" SERVICE IN THE FUTURE / OPPTIONALLY AT OTHER TIMES OF THE YEAR

THE GROUND FLOOR AND THE UPPER FLOORS ARE INDEPENDENT OF EACH OTHER

WHEN THE HOMELESS-ISSUE IS NO LONGER A REALITY / WHEN IT IS "SOLVED" :

THE GROUND FLOOR CAN THEN BE : CONNECTED WITH THE HOSTEL / A MUSEUM / A CITY-KINDERGARDEN / AN EDUCATIONAL CENTER / DAYCARE CENTER / BOOK-LIBRARY CAE CO-WORKING FACILITIES / ETC

FUNCTIONAL FUTURE

SLEEPING-CAPSULE PRINCIPLE

WHY THE CAPSULE PRINCIPLE?

SPACE EFFICIENT

PRACTICAL

FITS TO A "LOW-THRESHOLD"-SOLUTION

ABLE TO ACCOMMODATE A LARGE AMOUNT OF PEOPLE IN AN ORGANIZED WAY

NO PROBLEM OR REPLACEMENT OF CREAKY BEDS

SOLVING THE PRIMARY NEEDS

A GOOD SOLUTION FOR THE FACING ISSUES

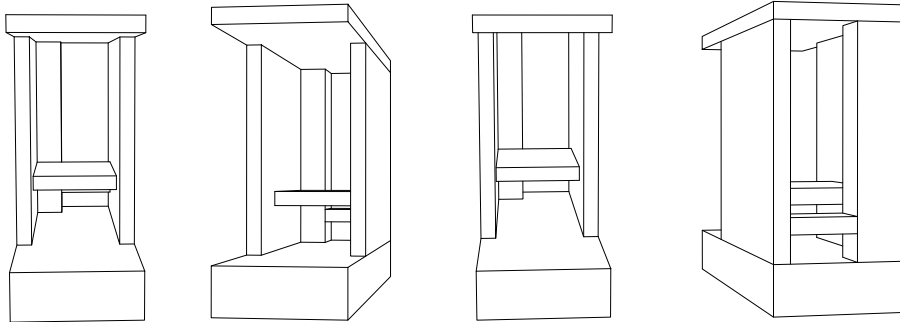
PROVIDES THE OPPORTUNITY TO :

EXPLORE THE FINE LINE-BALANCE BETWEEN

BEING PRIMITIVE AND COMFORTABLE

WHILE BEING ARCHITECTURAL

AND CREATE A GOOD EXPERIENCE



THE SLEEPING MODULE CRITERIA

ELEVATED MATTRESS

WINDOW FOR LIGHT / VIEW

ABILITY FOR AIR

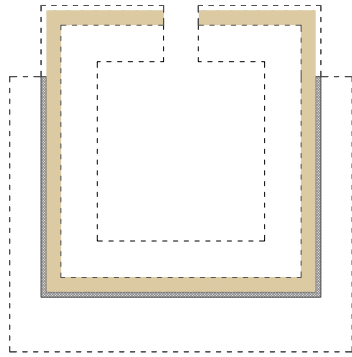
NO CLIMBING / ABLE TO STAND

CLOTHING BAG / SHELF / LAMP / CHARGING

A BIT PRIVATE

ABLE TO CLOSE OFF THE WINDOW

STAIRS NOT LADDERS



deivision
 the multi-functional wall
 seperates
 deviding the programs
 devides the sound

