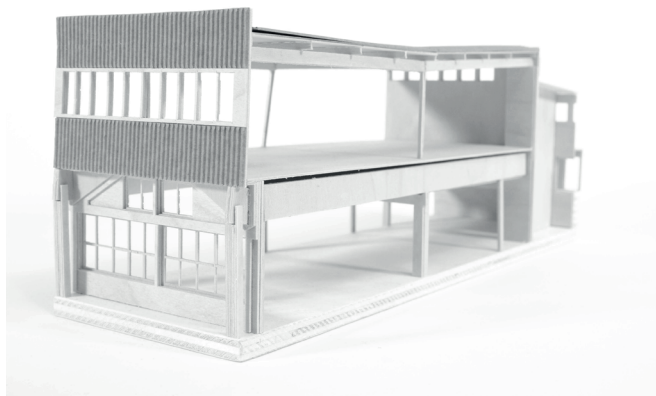
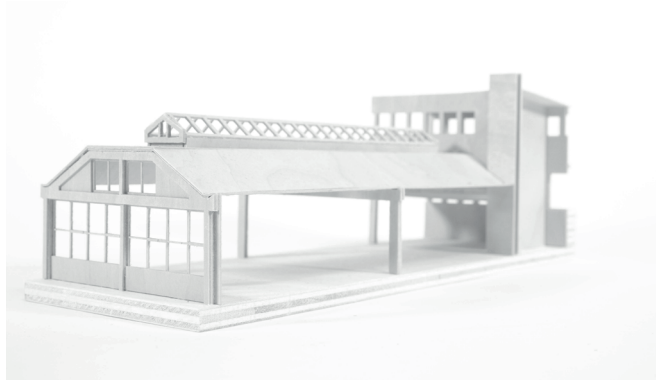


HOUSING THE YOUNG-OLD LØREN INDUSTRY BUILDING

Oslo School of Architecture and Design
Diploma fall 2019

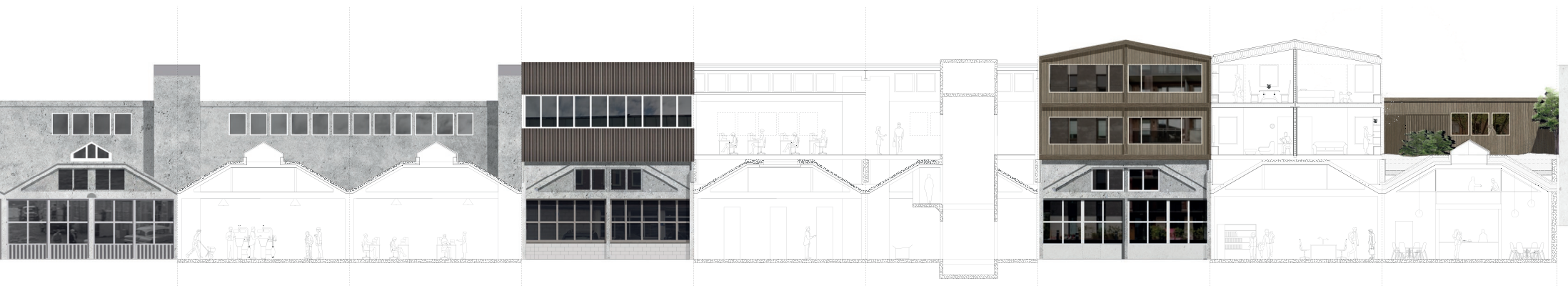
Kristine Heimdal
Advisor: Bente Kleven

The project is dealing with an aging population. How the increased life expectancy changes the way we think about elderly. The term Young-Old is used for people freed from the responsibilities of adulthood and childhood, and largely unconstrained by physical and mental disabilities. Housing the young-old on top of an existing building in an urban context. The aim is to create places that encourages for social interaction. The existing building is meant to serve as a public space for community as well as the elderly living on top.

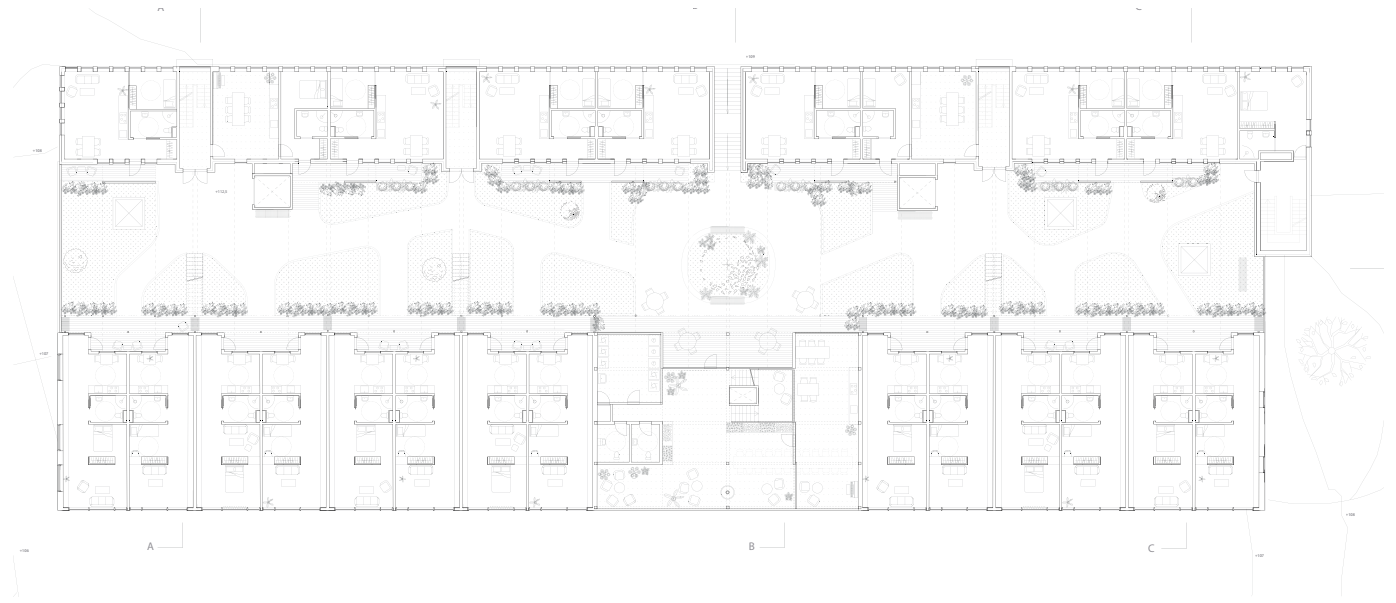
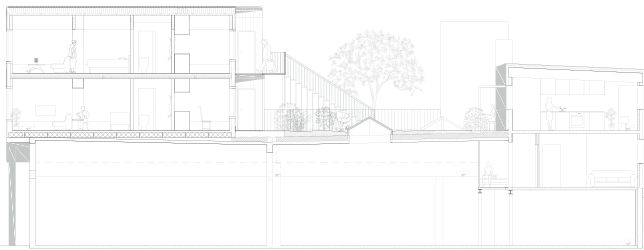


EXISTING BUILDING

As a starting point I investigated the existing building and its structure by digitalizing the existing drawings, both original and of the extension of 1979. I found the history of the building very interesting. Early on in the process I built the section models to understand and analyse the building and looking at the potential. I started peeling off building components from the extension of 1979 and cataloguing them. The materials are reusable. I was left with the original building and the load-bearing structure, elevators and a pre-cast concrete flooring. The structure as well as the circulation made the guidelines for placing new volumes on top for housing. Using of the existing



staircases and elevators made the entrances at the south facade. Entering in first floor in the existing part there is an internal hallway to the apartments creating a visual contact down to the production halls by opening up some areas and also allows light. Niches are placed along for the residents to meet. The stairways have also been opened up more to create more inviting rooms. Connected to all vertical circulation there is a common room and a visual contact so that it is easy to get in touch with other people. One of the staircases is opened to the outside to make a short-cut up without having to go into the building. This also breaks up the 94 meter long south facade.



HOUSING

The two floors of the former office the building is packed in with extra insulation and wooden panels to meet the requirements for housing. There are 16 apartments in the existing part to the south. They are about 50 m² having a bedroom and a spacious living area. The new housing volume follows the rhythm of the underlying structure this is also expressed in the facade. The apartment is 12,5x 5m, split in the middle of the 10 meter module with a non-bearing partition and goes over two floors. There are 28 of these apartments. They are organized around the bathroom and placing the kitchen as the most social zone towards the garden. In the

storey above these zones become more distinct by the beams in the roof. As in the apartments in the existing building I wanted to have the light to go trough the building. Along its stretching a bench that can be used for storage or seating. The living area and bedroom are split by a wall making it flexible how to furnish.

COURTYARD

Outside the entrance door I wanted them to have their own half private outside area therefore the volume is drawn in. The access balcony above as well of the change of floor cover marking this. I wanted the same for the entrances in the existing building adding a simple roof leaning on a espalier that shields

the entrance area. The area between the transformed and added housing volume becomes a great outdoor area. The existing structure of the halls of the production halls has great potential. The concrete elements are removed where there is no housing leaving pits for earth for planting. The weight of the earth is hinged in a steel frame on the beam and the depth of 1,60 allows greater plants and trees to grow there. There is a cast concrete path made in consideration of rollators and wheelchairs. In between them different areas are created that can be used for cultivation.

Three steel staircases are following the path of the circulation hall leading straight up. At a few points the over light has been reopened to let light down to the production halls again as well as the visual connection. The middle is planned as a square for people to meet in front of the large common glass house.

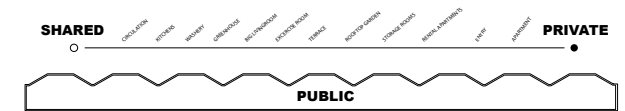
COMMON

There are altogether 44 apartments and three smaller flats connected to common kitchens. In my pre-diploma I was looking at different housing of elderly and one of them was mixing with students. I think that is interesting, but they can also work as extra rooms for visitors of the residents. The common-house

is thought as an open glasshouse re-using the steel components. Entering into the middle room in a half acclimatized room for cultivation and a fireplace. A place to sit down and meet while washing clothes at the laundry room, grow vegetables or for physical activity in the second floor. There is also a larger kitchen which can be opened up to the middle room for bigger happenings. From the level above its also possible to observe and this visual connection is obtained.

INVITING COMMUNITY TO THE BUILDING

The plans for the production halls is more on a schematic level., but the purpose making a place people in the community meet and also might elderly can contribute with reading at the library, homework assistance or a workshop. The connection to the park makes it a place people are passing by.



ACTIVITIES GAINING BOTH THE YOUNG-OLD AND INVITES THE COMMUNITY

