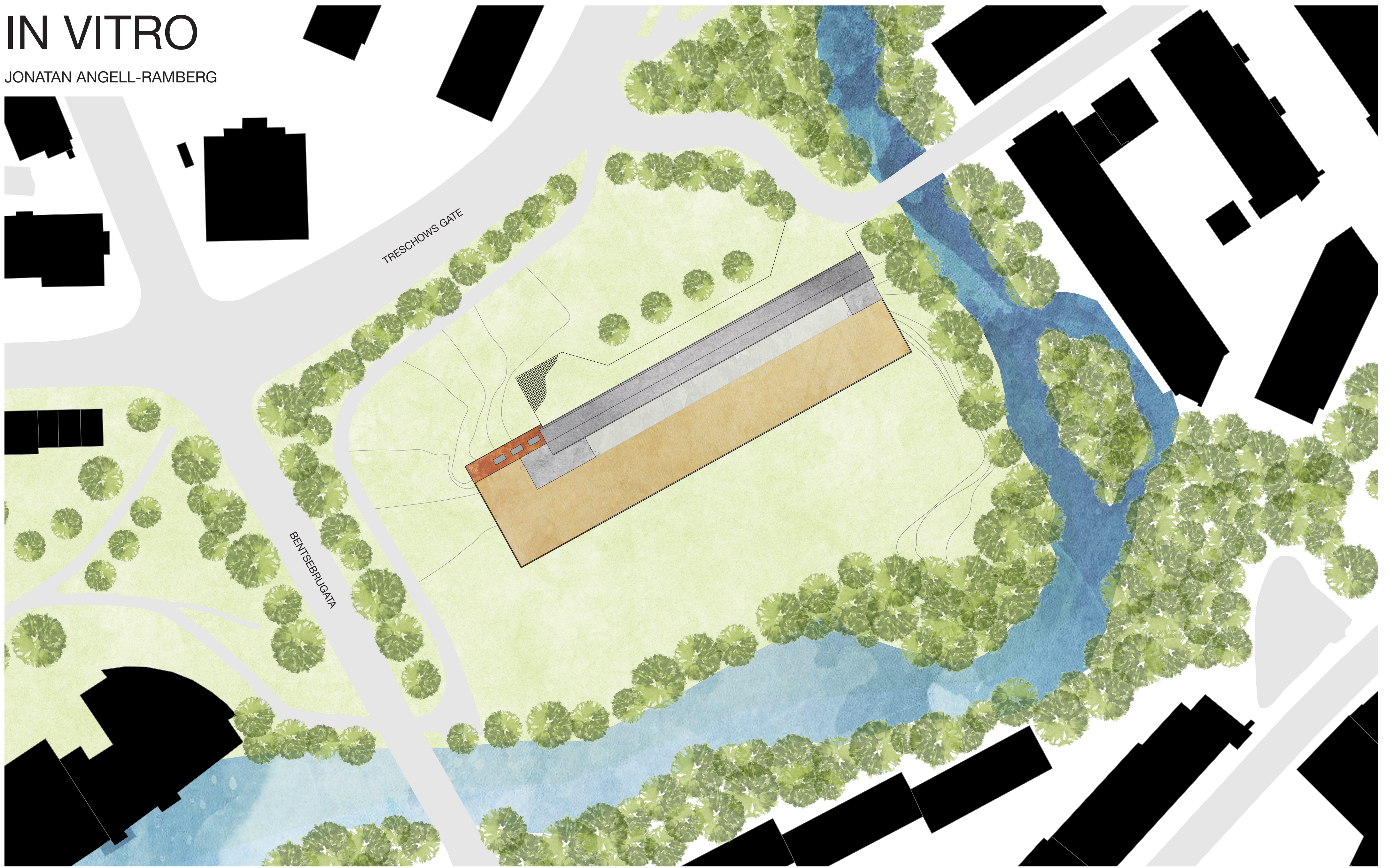
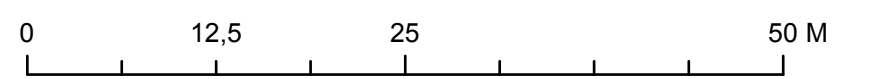


IN VITRO

JONATAN ANGELL-RAMBERG



SITEPLAN TRESCHOWS GATE 16, SAGENE, OSLO 1:500



This project has investigated a new method of food production, focusing on the growing of in vitro (lab grown) meat and how its production line affects the architectural design of a building in the city.

Raising livestock and growing feed for them requires vast amounts of energy and physical space. In vitro meat production could provide an environmentally sustainable solution to this problem, as it needs only a fraction of the same land area and energy to yield the same amount of produce as traditional methods.

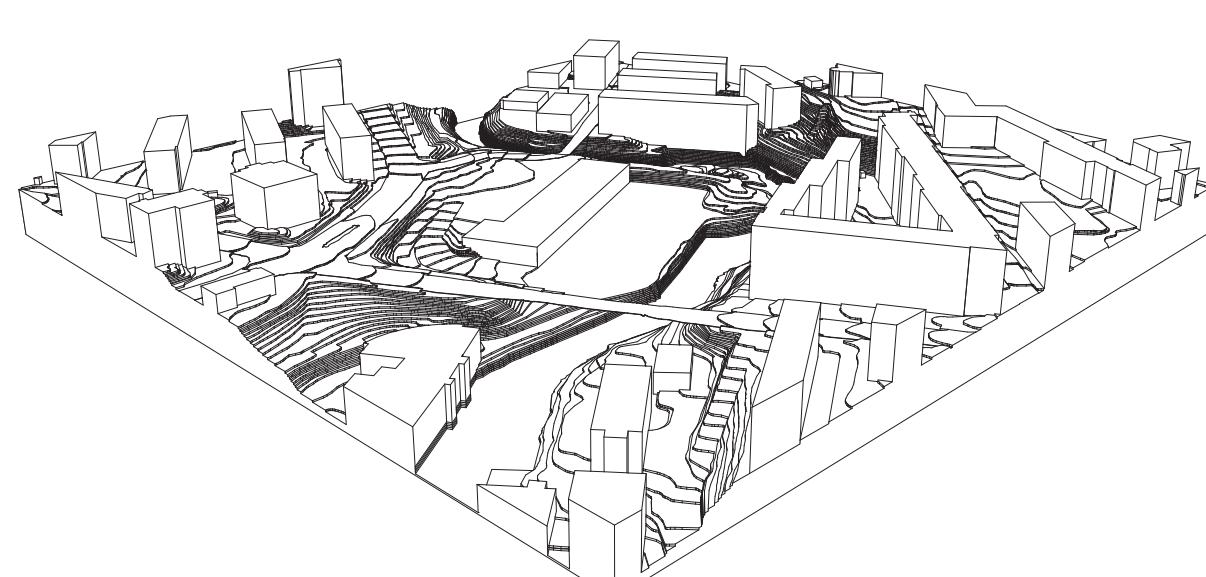
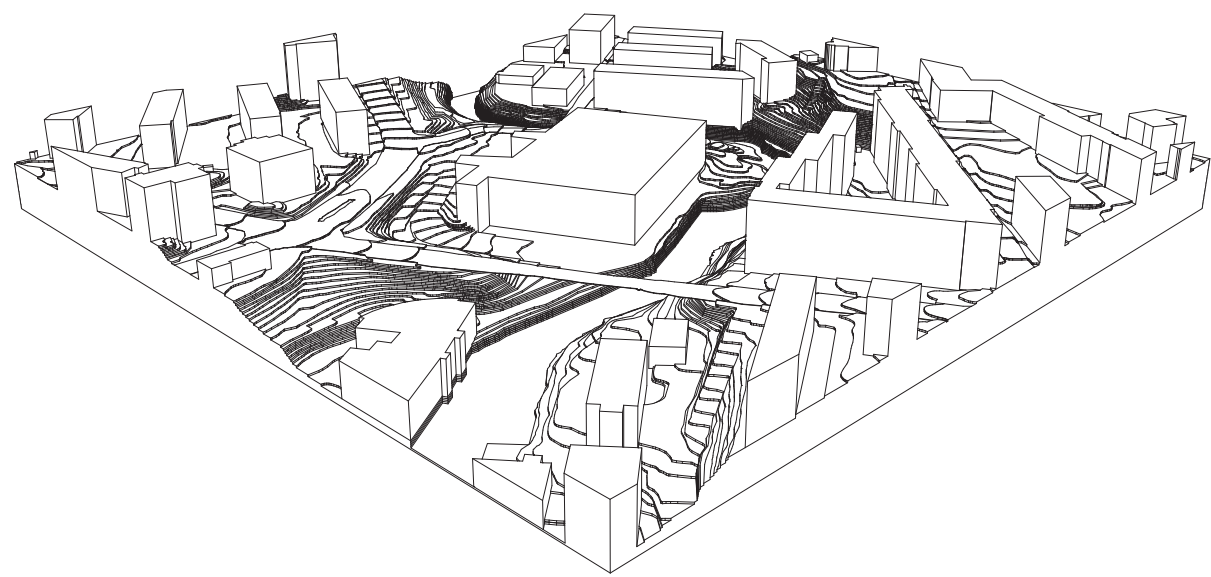
The proposal is a facility in the city, housing a production line of short travelled meat, that can also be an educational example to the consumers and producers of its final products.

The result is a cross between laboratory, factory and gallery in an urban setting, a place for production and learning, that at the same time gives public park area back to the people of Oslo.

The chosen site is located in a residential area but has an industrial history and can accommodate the logistical and technical needs of the factory. Today, the whole site is closed off to the public, forcing pedestrians to diverge from their natural pathway following the river. The proposal opens the site again for public use.

The placement of the project in an urban context is justified by the benefits of local and short-travelled produce. Locating the project in the city allows for smaller scale distribution chains, since the need for larger vehicles is eliminated.

The suggested name for such a place is 'Carnery', relating to brewery and winery. The scale of the project is determined by the production volume and the proposed solution could in theory produce enough meat to sustain roughly 180.000 people with a normal consumption in a year.

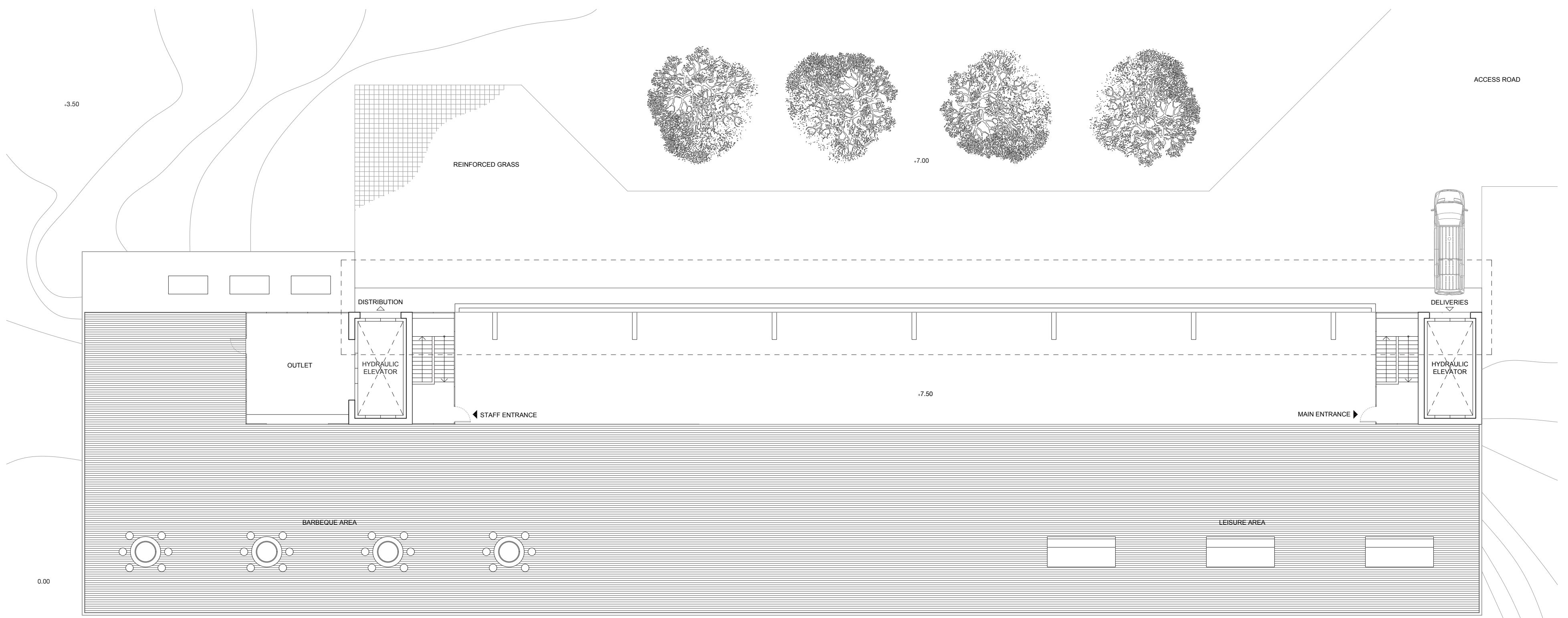


CURRENT SITUATION

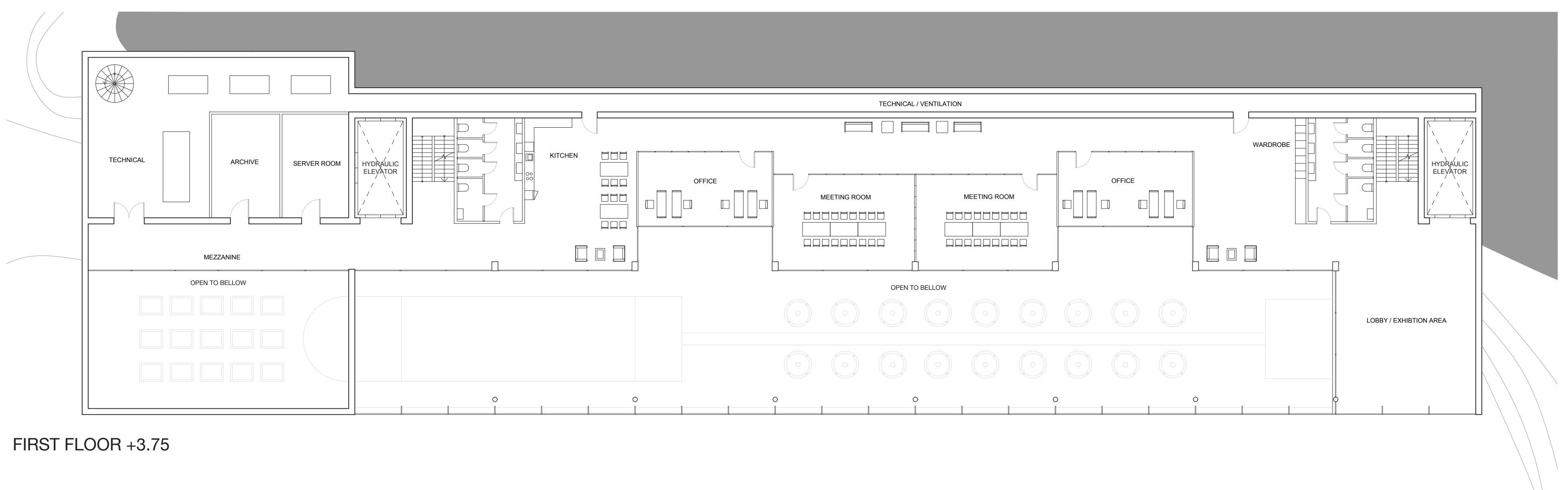


PROPOSED SITUATION

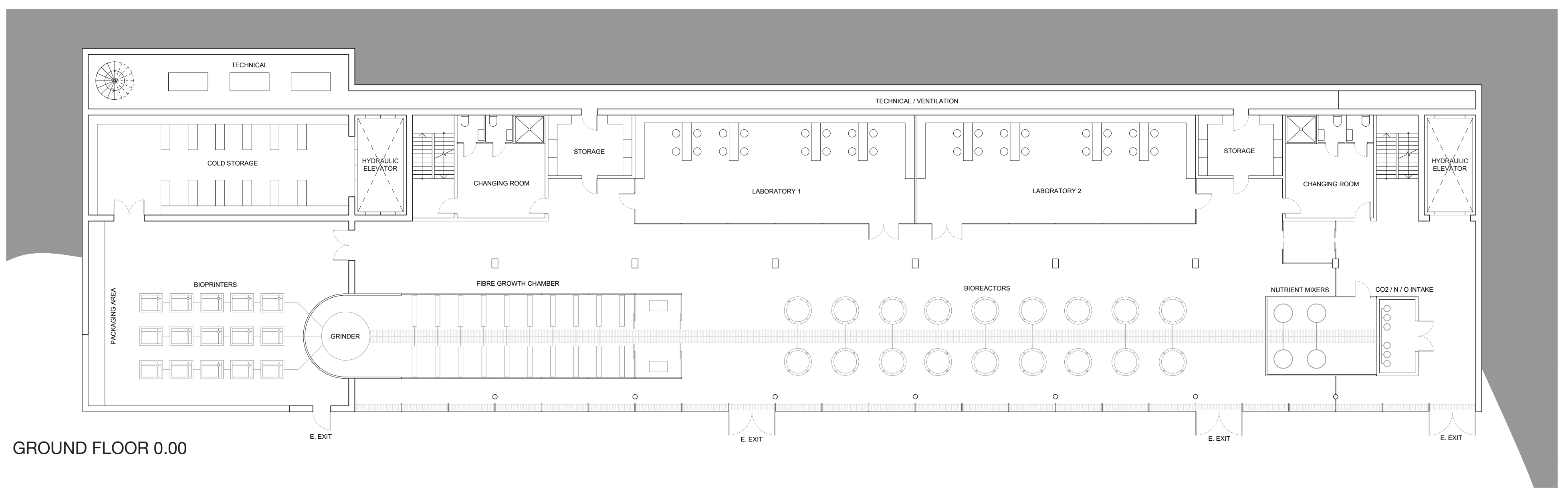
SITE PHOTOS



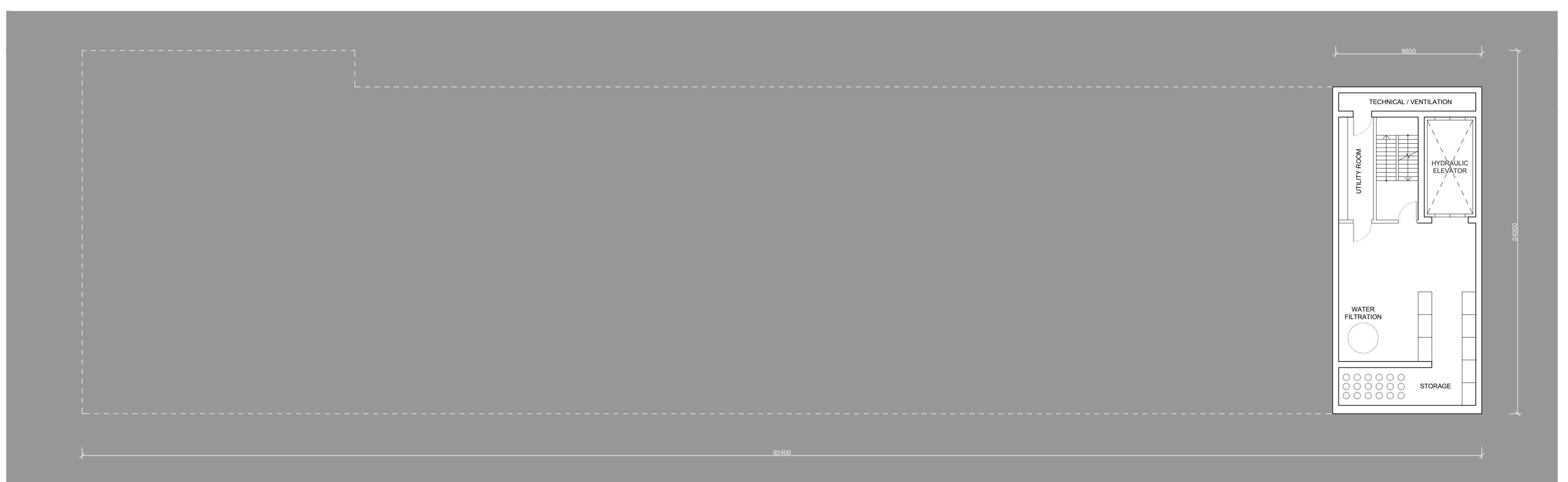
ROOF +7.50



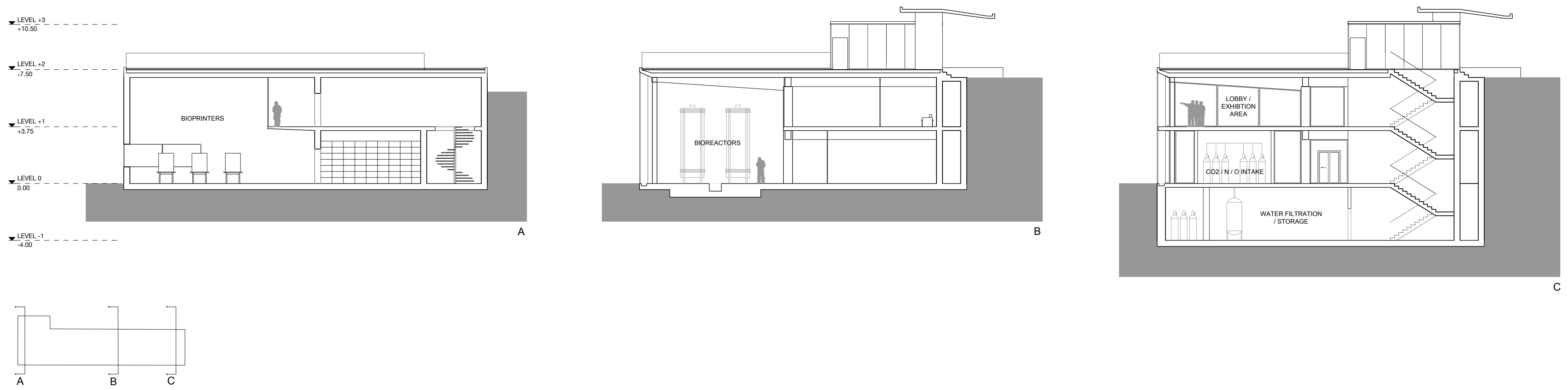
FIRST FLOOR +3.75



GROUND FLOOR 0.00



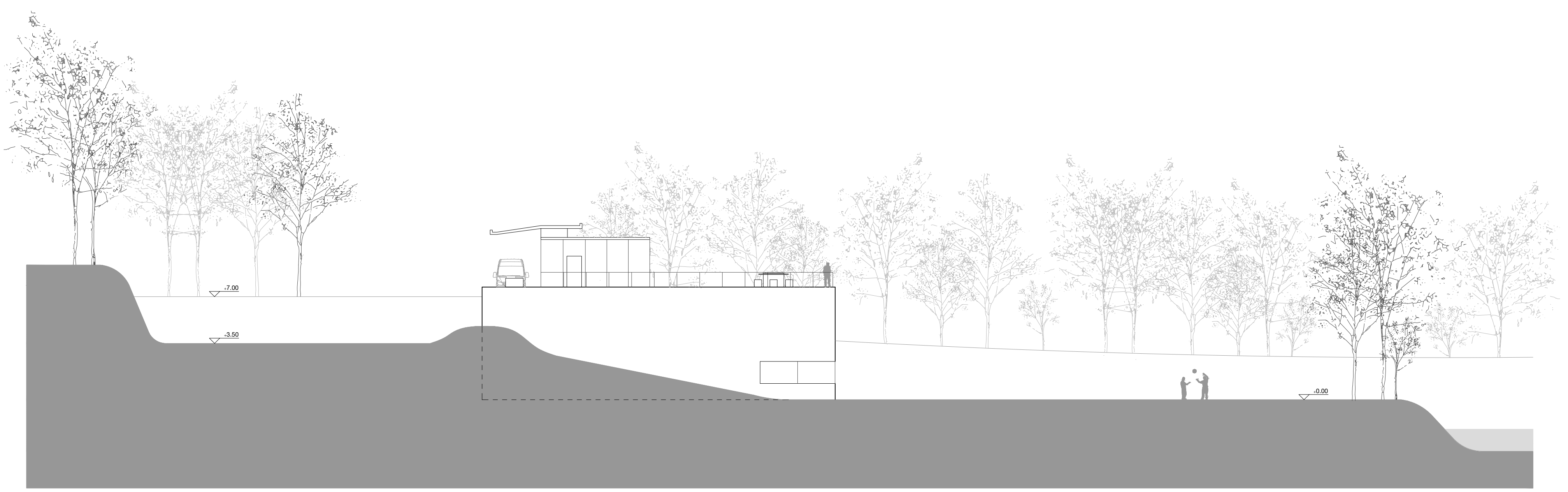
BASEMENT -4.00



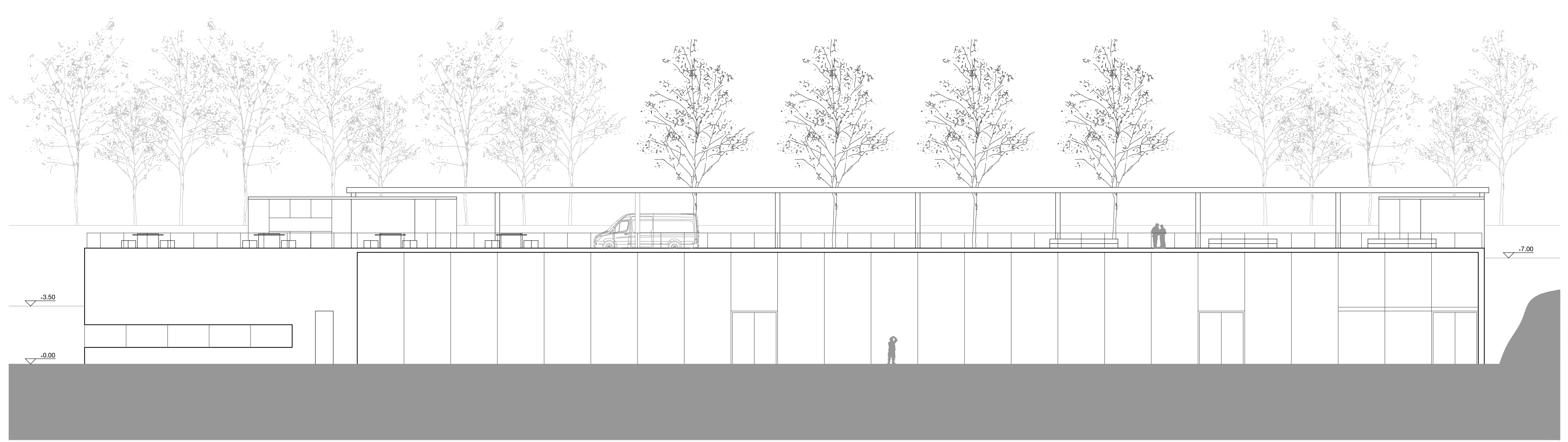
SECTIONS

The proposed facility has two distinct parts. One clean and closed, housing the production line and research facilities, allowing you to see in, but not enter. This is situated on the ground floor level. The other open and welcoming, allowing the public to either observe from outside or enter the building and understand the process while being guided by staff members, and accommodating supporting functions such as offices, meeting rooms and technical program. This is situated on the first floor level.

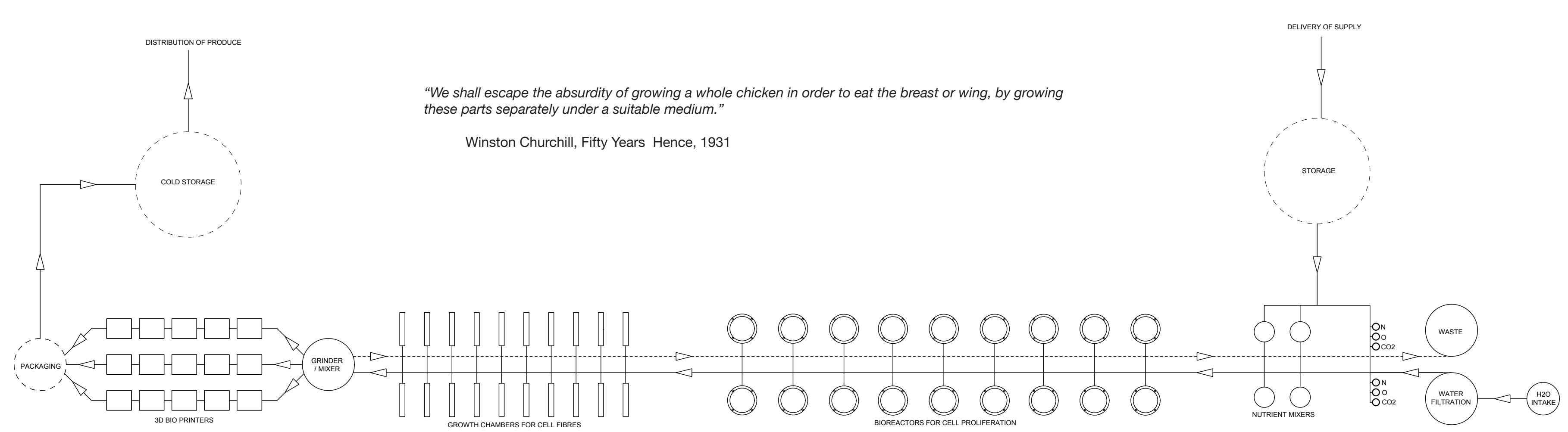
It was decided to use the parts of the footprint of the sites existing structure, while reducing both the volumes height and ground floor, eliminating the need for excavating the site while opening most of it for public access. The new building is set into the landscape, which has a height difference of 7 meters from the lower level on the south side towards the river to the roof level on the north side towards Treschows gate. This leaves the west and east facade partly exposed and the south facade open.



WEST FACADE



SOUTH FACADE



"We shall escape the absurdity of growing a whole chicken in order to eat the breast or wing, by growing these parts separately under a suitable medium."
Winston Churchill, Fifty Years Hence, 1931

PROPOSED PRODUCTION LINE