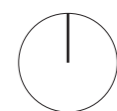
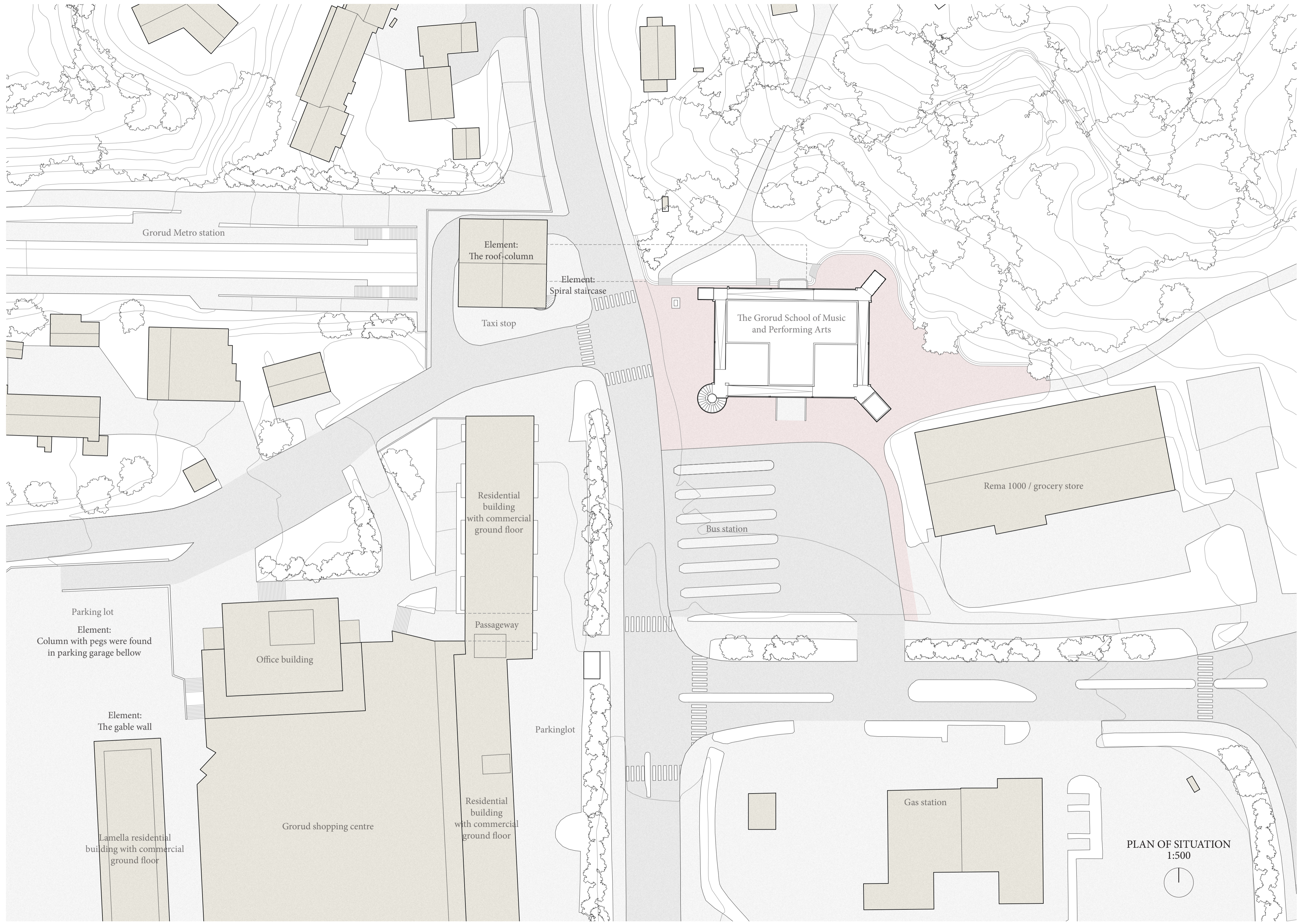


- 1 Project / Grorud School of Music and Performing Art
- 2 Bus station
- 3 Rema 1000 / Grocery store
- 4 Taxi stop
- 5 Grorud Metro station
- 6 Residential building with commercial ground floor
- 7 Office
- 8 Grorud shopping center
- 9 Lamella residential building
- 10 Residential building with commercial ground floor
- 11 Gas station
- 12 Grorud sports park
- 13 Grorud school
- 14 Grorud church
- 15 Grorud dammen / pond with recreational area
- 16 Trondheimsveien / highway
- 17 Alna river / recreational area
- 18 Office building
- 19 Parking lot with parking garage below
- 20 Ammerud activity centre for kids and youth

PLAN OF SITUATION
1:2000





Groud Metro station

Element:
The roof-column

Element:
Spiral staircase

Taxi stop

The Groud School of Music
and Performing Arts

Rema 1000 / grocery store

Bus station

Residential
building
with commercial
ground floor

Passageway

Parkinglot

Gas station

Parking lot
Element:
Column with pegs were found
in parking garage bellow

Office building

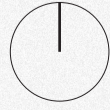
Element:
The gable wall

Lamella residential
building with commercial
ground floor

Groud shopping centre

Residential
building
with commercial
ground floor

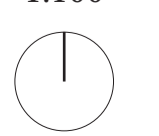
PLAN OF SITUATION
1:500

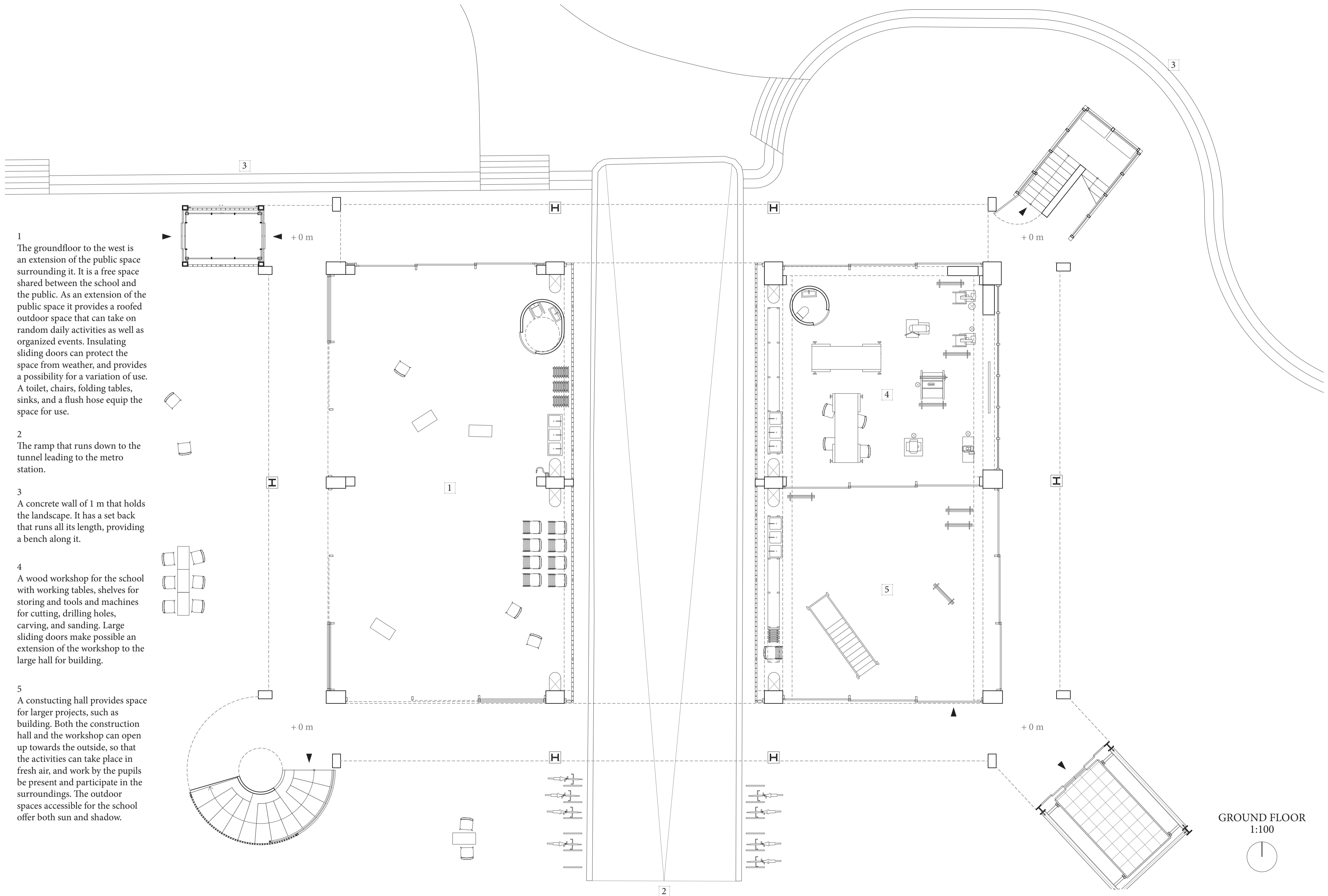




- 1 Bus platforms
- 2 Ramp to metro station
- 3 Spiral staircase
- 4 Bergensveien
- 5 Public ground floor (free space)
- 6 Sculpture in granite
- 7 The glass block elevator
- 8 Path to residential area
- 9 The lamella stair case
- 10 Workshop
- 11 Construction hall
- 12 The steel elevator
- 13 Path to Romsås
- 14 Rema 1000 / grocery store

GROUND PLAN
1:100





1
The groundfloor to the west is an extension of the public space surrounding it. It is a free space shared between the school and the public. As an extension of the public space it provides a roofed outdoor space that can take on random daily activities as well as organized events. Insulating sliding doors can protect the space from weather, and provides a possibility for a variation of use. A toilet, chairs, folding tables, sinks, and a flush hose equip the space for use.

2
The ramp that runs down to the tunnel leading to the metro station.

3
A concrete wall of 1 m that holds the landscape. It has a set back that runs all its length, providing a bench along it.

4
A wood workshop for the school with working tables, shelves for storing and tools and machines for cutting, drilling holes, carving, and sanding. Large sliding doors make possible an extension of the workshop to the large hall for building.

5
A constructing hall provides space for larger projects, such as building. Both the construction hall and the workshop can open up towards the outside, so that the activities can take place in fresh air, and work by the pupils be present and participate in the surroundings. The outdoor spaces accessible for the school offer both sun and shadow.

GROUND FLOOR
1:100



1

Staff room

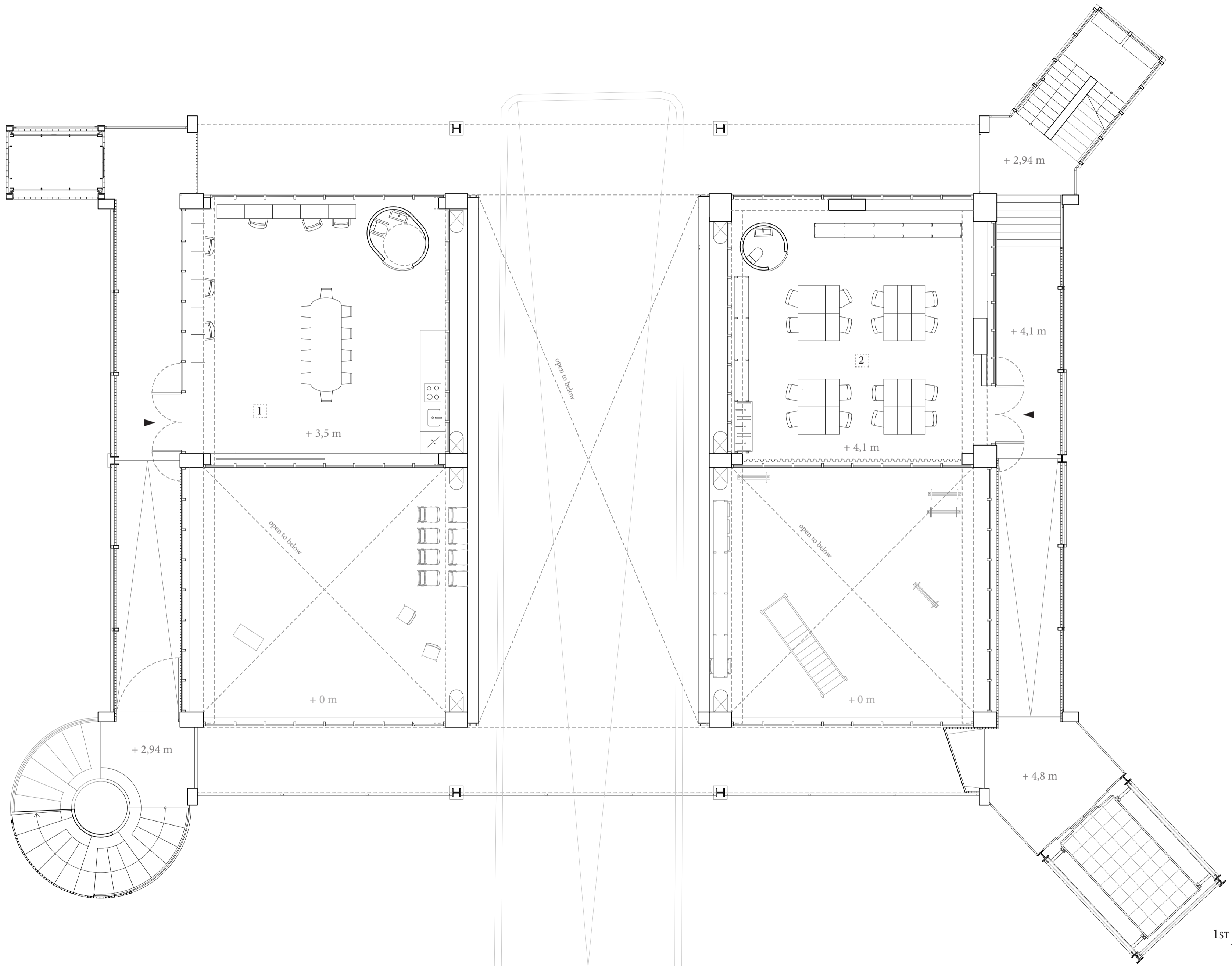
The staff room is a recreational area with office space and meeting room for the teachers. The teachers and staff at the school work mainly in the class rooms. A recreational area is provided for time between classes and gathering of the staff for lunch and meetings.

The space provides desks for occasional administrative work. The teachers' space is set to one of the lowest levels, so that they can have an overview of the ground floor, and have contact with both pupils and others who enters and leaves. Since children and youth constitute a large proportion of the users of both the area and the building, the presence of adults can create safety and comfort.

2

Classroom for visual art

A large open floor area provides for a range of different methods of work with visual art. The space is furnished and equipped with shelves that can store work, tools and materials. Sinks provide for washing and water for work. Chairs and folding tables are stacked under the shelves, and can be used in classes. Lockers with rail for hangers give the pupils a place to keep their personal belongings while in class.

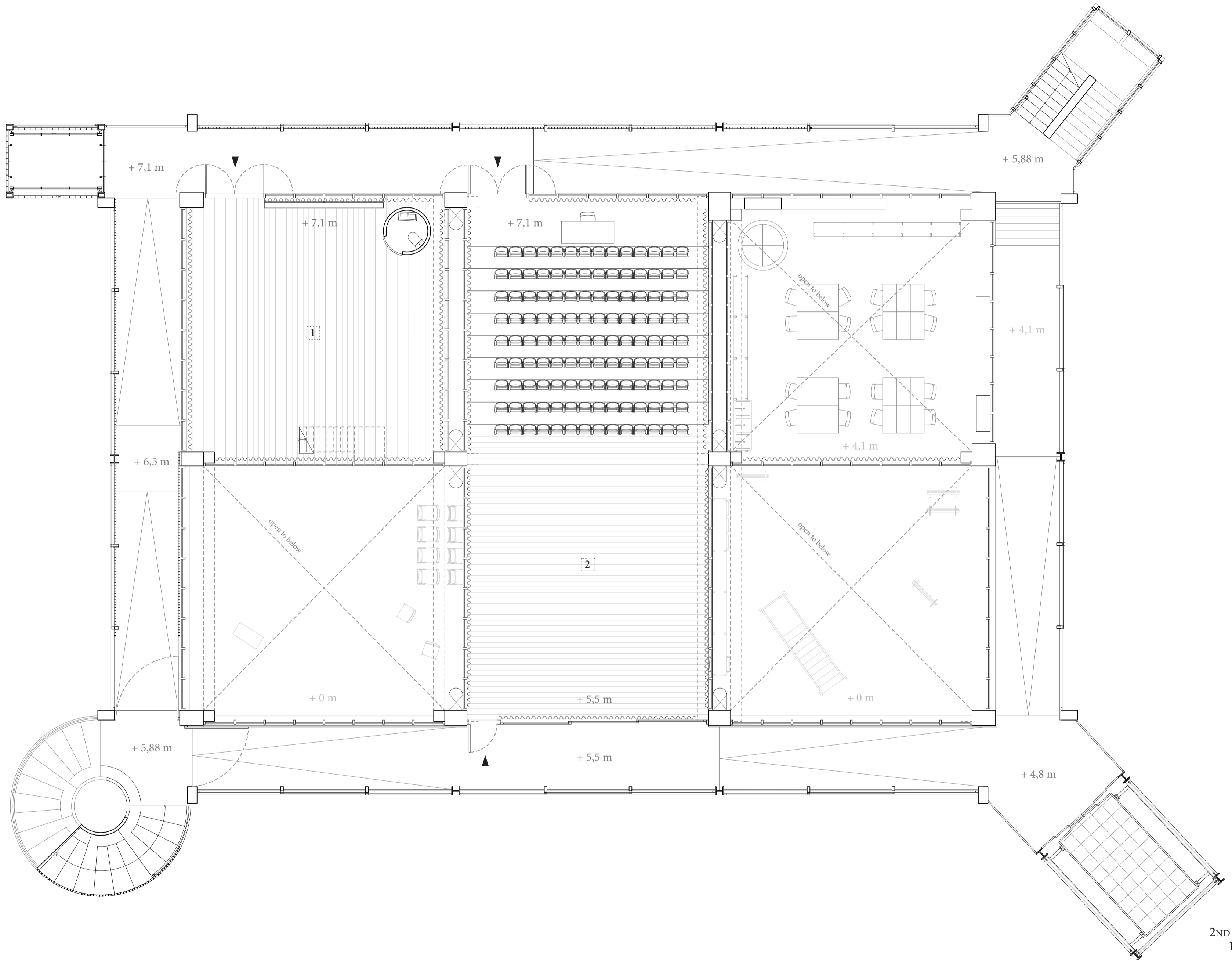


1st FLOOR
1:100



1
Classroom for theatre and dance
 An open space of approx. 75 m² provides for classes of physical activities. The space can be used by dance classes for smaller groups, dance classes for young kids, and classes in drama and theatre. A resilient floor with wood surface makes the space suitable and safe for physical work, and gives a warm feeling of the space. Lockers with rail for hangers give the pupils a place to keep their personal belongings, shoes and outerwear while in class. Large curtains can be drawn to shade for the sun or in need of more privacy. A fixed staircase connects the classroom to a neighbouring common space in the building. This makes it possible for pupils walking barefoot, in socks or with dancing shoes to enter the space dry foot. The space behind the toilet provides for storage of equipment such as mats.

2
Auditorium
 The auditorium can be used for both classes and performances. A performance space of 10 m depth and 8,8 m width provides for smaller performances of various types. The resilient wooden flooring offers a qualities for different types of performances. The space can be darkened with blinders and large curtains, creating the atmosphere of certain performances and conditions for use of stage lighting. A hanging installation of plywood over both the performance space and the amfi ensure acoustic conditions. At the end of the performance space is a large sliding door allowing things of size to be moved in to the room, making it ready for performances. As it faces the bus station, there is an opportunity to give to the place below with activity and sound.



1

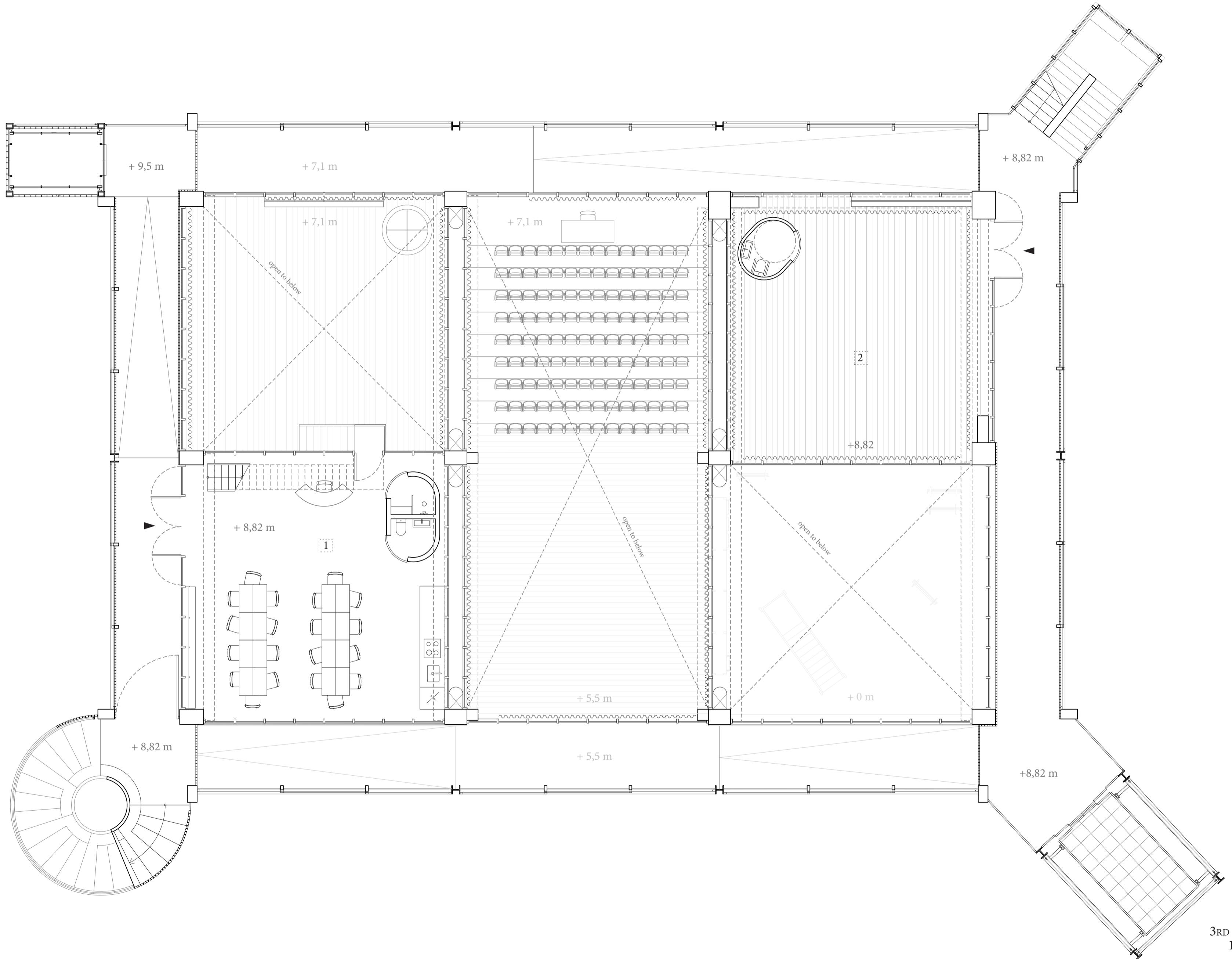
Common space and reception

The common space is a space where the pupils can meet up before classes or where parents can wait for their children. Here one is welcomed and can always get information from a receptionist. Lockers with rail can be used to store personal belongings for those who do not bring them to classes. A shower in the toilet unit offers a possibility to clean for those who will not wait before they come home. A kitchen provides for small cooking before or in between classes. The chairs and folding tables makes the space flexible, and the pupils can arrange the space as they want. Chairs and tables are stored at the sides of the toilet unit. The space is directly connected to two classrooms for dancing. This makes it possible for pupils to enter their class dry foot.

2

Classroom for theatre and dance

The space has the same facilities as the similar classroom at the 2nd floor, though without direct connection to a common room. The pupils can enter before their class or, if allowed, sit along the windows and wait for the ongoing class to end.



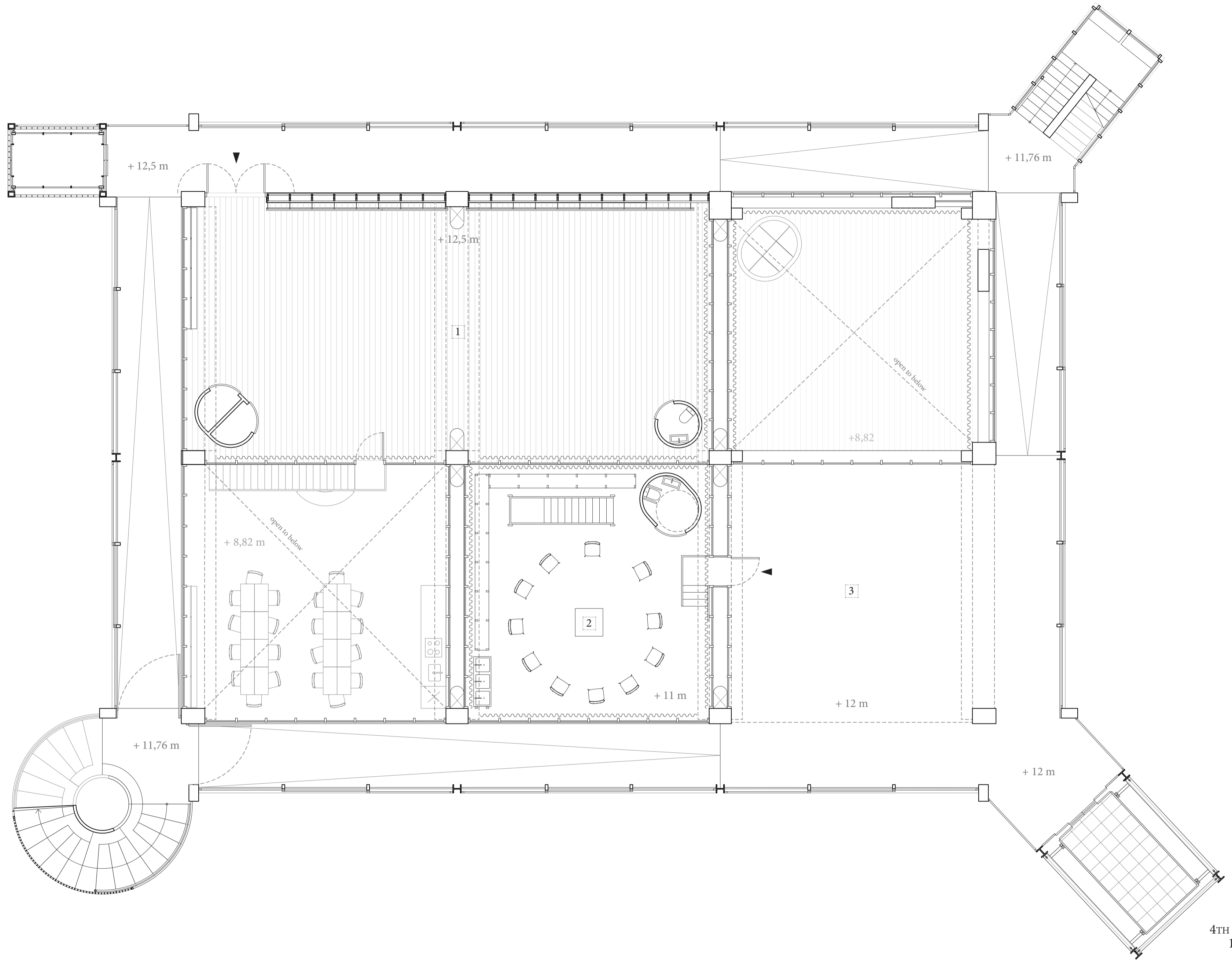
3RD FLOOR
1:100



1
Large classroom for dance
 A large space of approx. 150 m² provides for large classes of physical activities. A resilient floor with wood surface makes the space suitable and safe for physical work, and gives a warm feeling of the space. Along the north perimeter of the space runs an insulated 2 m high wall with windows extending windows above it. This lets the trees to the north present. Mirrors with a running dance barre is fastened to the wall. Two units, a toilet and two shifting rooms can be used to change clothes for class. Lockers with rail for hangers gives the pupils a place to keep their personal belongings, shoes and outerwear while in class. Large curtains can be drawn to shade for the sun or in need for more privacy. The classroom is directly connected to a common space.

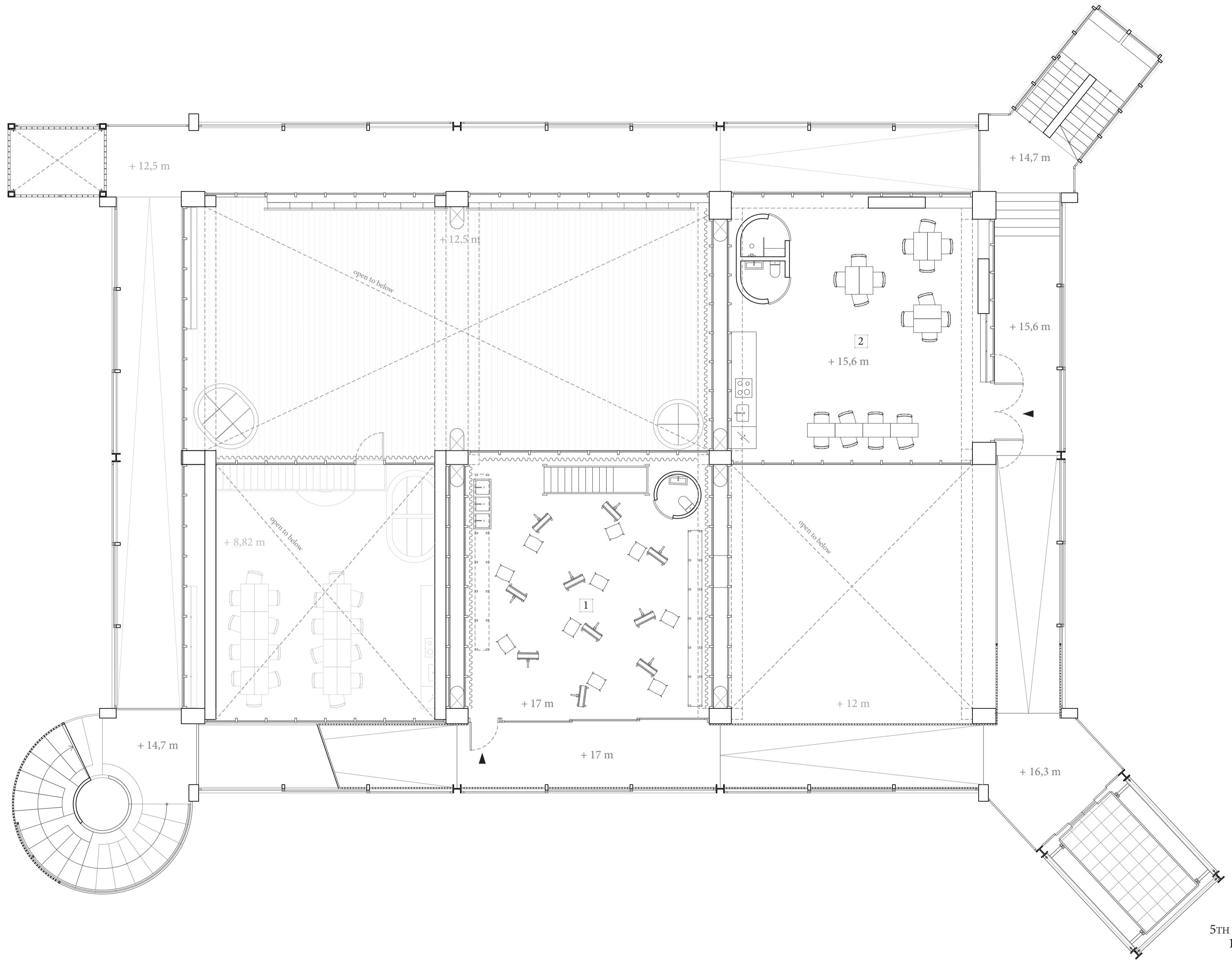
2
Classroom for visual art
 The space has the same facilities as the similar classroom at the 1st floor. The height of the space makes a possibility for high shelves. A movable staircase on wheels makes the things placed high up accessible. The classroom is entered with a small bridge from the outdoor space to the east.

3
Free space
 The free space is a large unfurnished and unprogrammed floor level with concrete floor. It can take on any activity by the school, as random social activities, events such as exhibitions and performances, and for classes. The level's fusing with the ramp gives it the possibility to become a semi outdoor space, as the aluminium doors connected to the ramp can be pushed aside. This makes a space with a dynamic character with a range of uses.



1
Classroom for visual art
 The space has the same facilities as the similar classroom at the 4th floor. A sliding door to the ramp allows things of size to be moved into and from the room. When the sliding doors of both the classroom and on the ramp are pushed open, the atmosphere of the outside, the square and the bus station below, and the view of Gorud at this level, can blend with the atmosphere of the classroom.

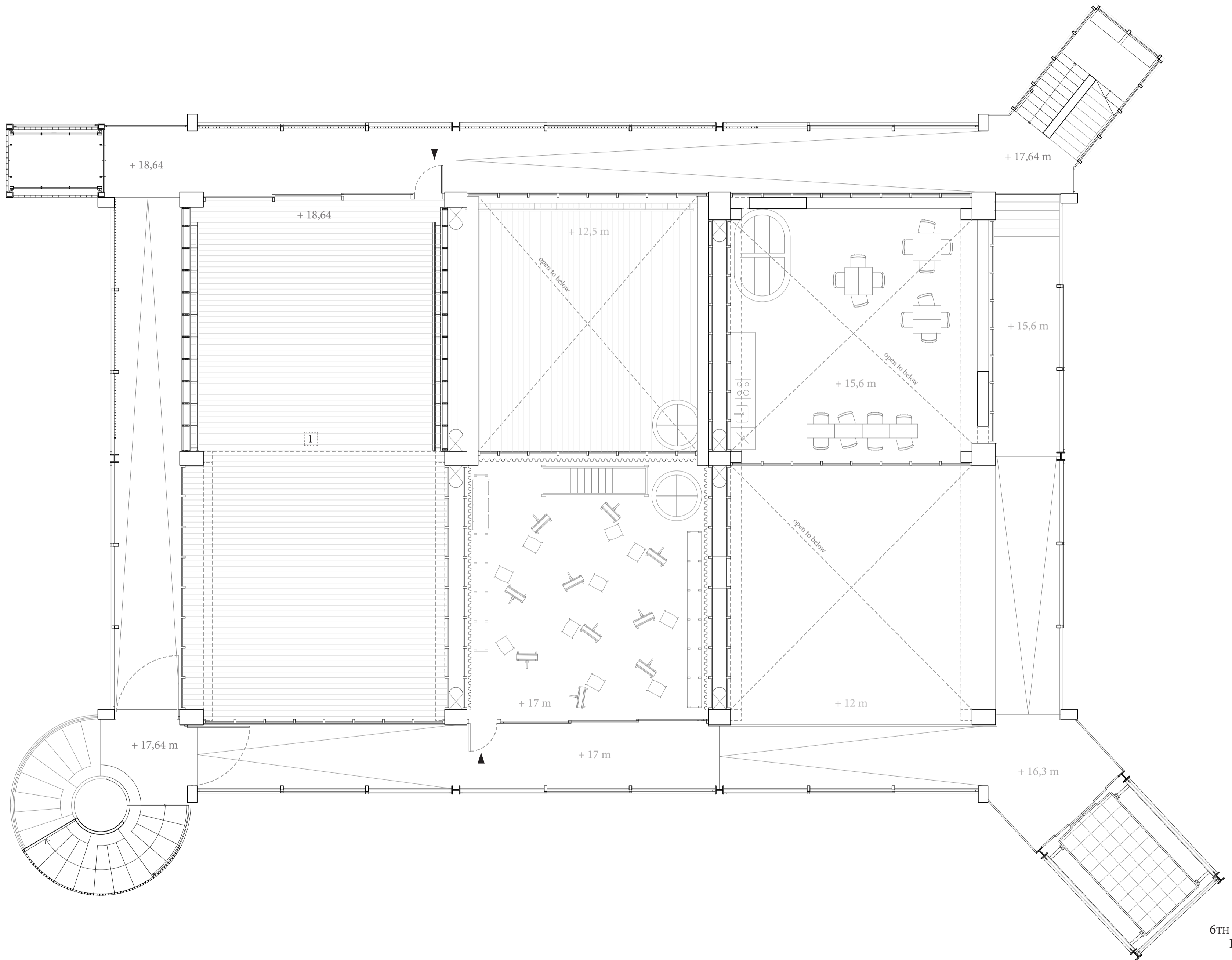
2
Common space
 The common space at this level has a lot of the same facilities as the similar common space at the 3rd floor. As it has no reception, the level it is on, and its direction towards the forest, makes it a less busy common space. Here pupils attending classes on the upper floors in the building can gather, meet up, or wait. With the folding tables and chairs, the space is arranged as wanted.



5TH FLOOR
 1:100



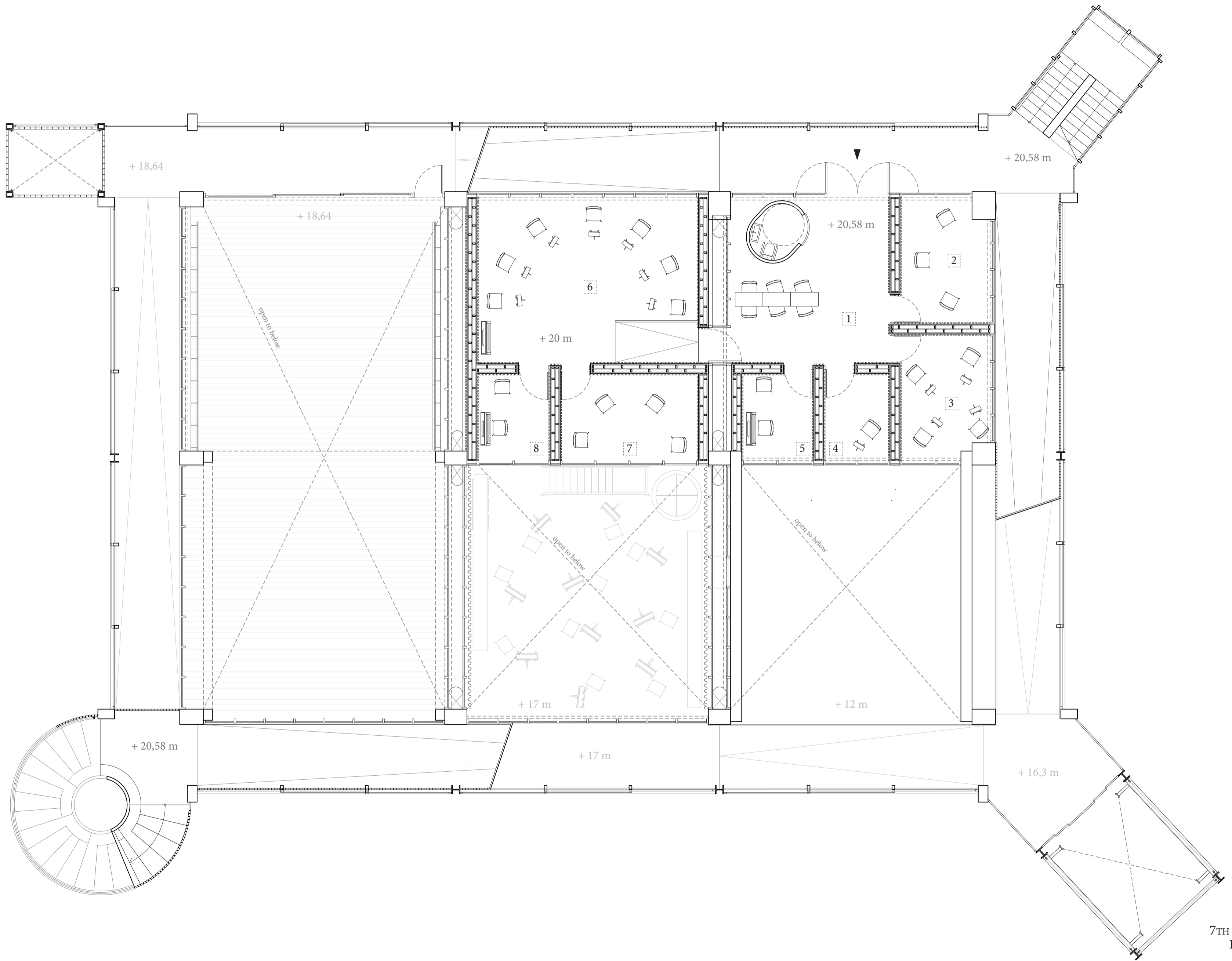
1
Large classroom for dance
 This classroom for dance has the same facilities as the large classroom for dance at the 4th floor. The mirrors and dance bars are placed on walls facing each other. A large sliding door to the north makes it possible to open up towards the treetops and filling the space with the sound and glimmer of rattling leaves. The south end of the classroom gets a full view towards Grorud to the south and Ammerud to the west when the aluminium doors with translucent polycarbonate is pushed aside.



6TH FLOOR
 1:100



- 1
Music floor
The music floor is gathered to the same level on the top floor of the building, because of their common need for low environmental sound. The floor space needed for classes is also less than the other activities in the building, so a division of the plateaus is necessary. The subdivision is done with sound isolating walls, so that each classroom has contact with other spaces in the building or to the outside. The floor is entered through double doors to a small common room where pupils can wait for their class.
- 2
Classroom and rehearsal space for a small group.
- 3
Classroom and rehearsal space for a small group.
- 4
Classroom for single tuition.
- 5
Classroom for single tuition.
- 6
Classroom and rehearsal space for large group.
- 7
Classroom and rehearsal space for a small group.
- 8
Classroom for single tuition.



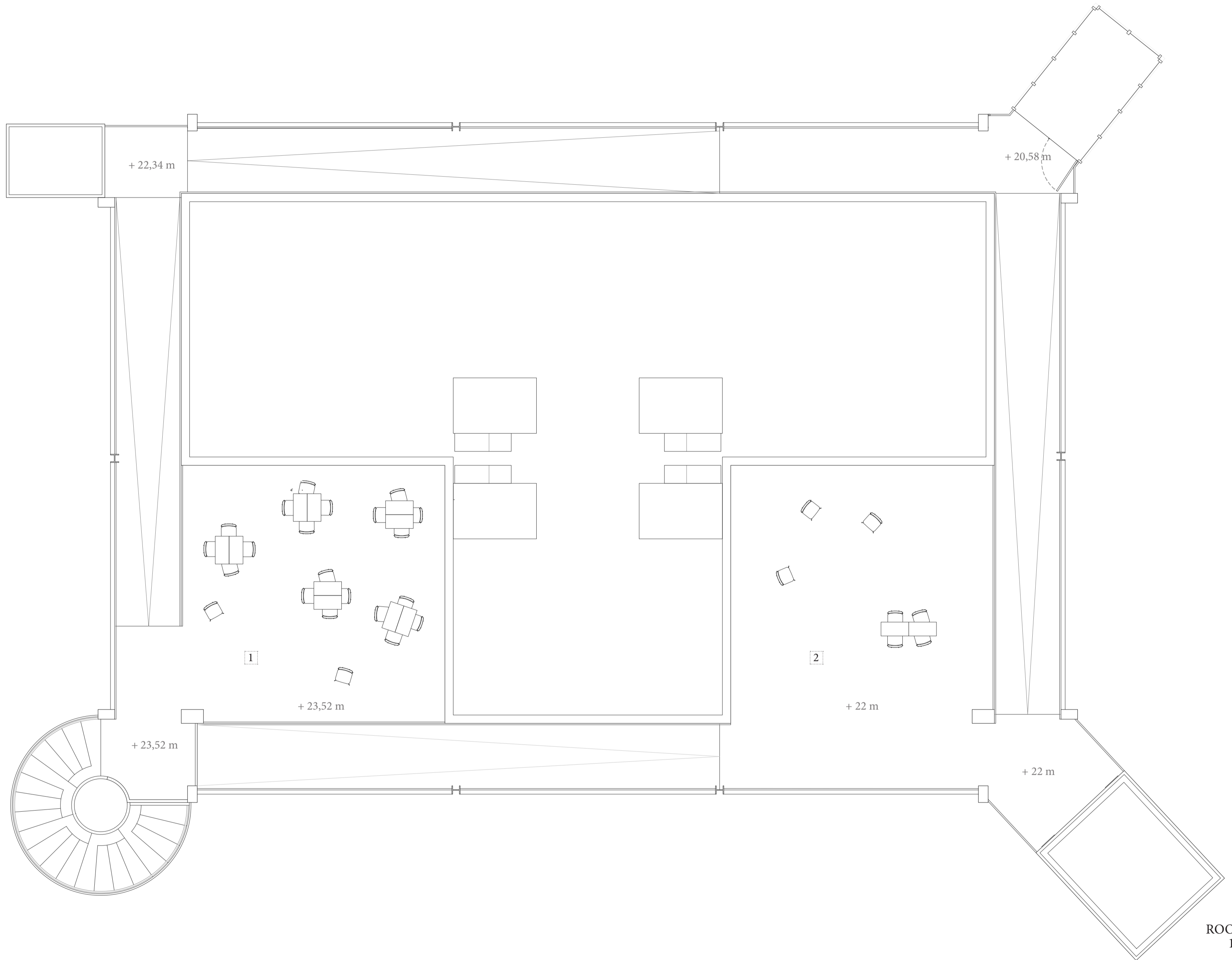
7TH FLOOR
1:100



1 & 2

Roof terraces

Two roof terraces are accessible 24 hours a day by both the school and the public. These become a quality for anyone who lives in or visits the area. The terraces draw the public ground floor all through the structure with its spiral staircase or the elevators to the top of the building, making it belonging to everyone. Both daily social meetings and planned events can take place here, with an extended view of the area around.



ROOF PLAN
1:100

