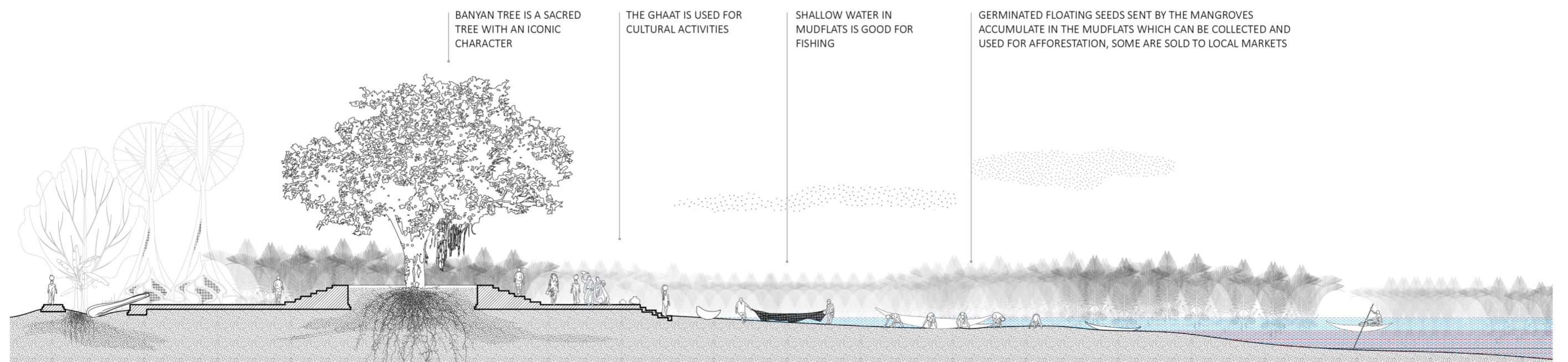
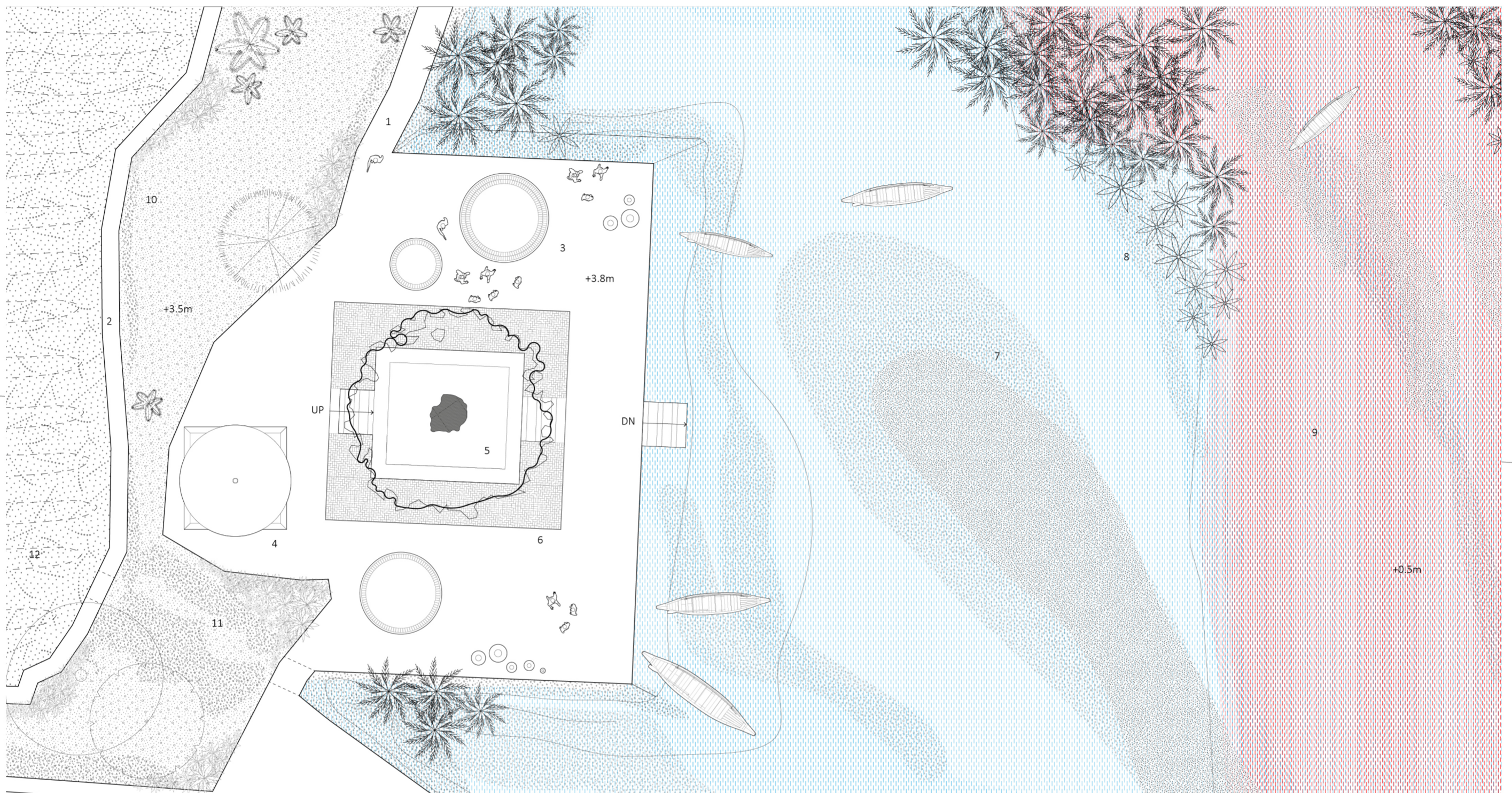


THE MUDFLAT

FOLLOWING THE TIDE: TIDE ENTERS THE GARDEN



- 1. WALKWAY TO SLUICE GATE
- 2. WALKWAY ON BUND
- 3. ELEVATED PLATFORM FOR SITTING
- 4. STACK FOR NYPA PALM
- 5. ELEVATED PLATFORM FOR BANYAN TREE
- 6. RAISED STEP
- 7. SEDIMENT AND GERMINATED MANGROVE SEED ACCUMULATION ON THE MUDFLAT

- 8. FINE SEDIMENT ACCUMULATION ON THE PALM ROOTS
- 9. DEEP AREA WITH YEAR AROUND TIDES
- 10. GRASSLAND SUITABLE FOR VEGETABLE PLANTATION
- 11. WATER DISCHARGE AREA FROM ADJACENT FIELD
- 12. RAISED BED FARMLAND





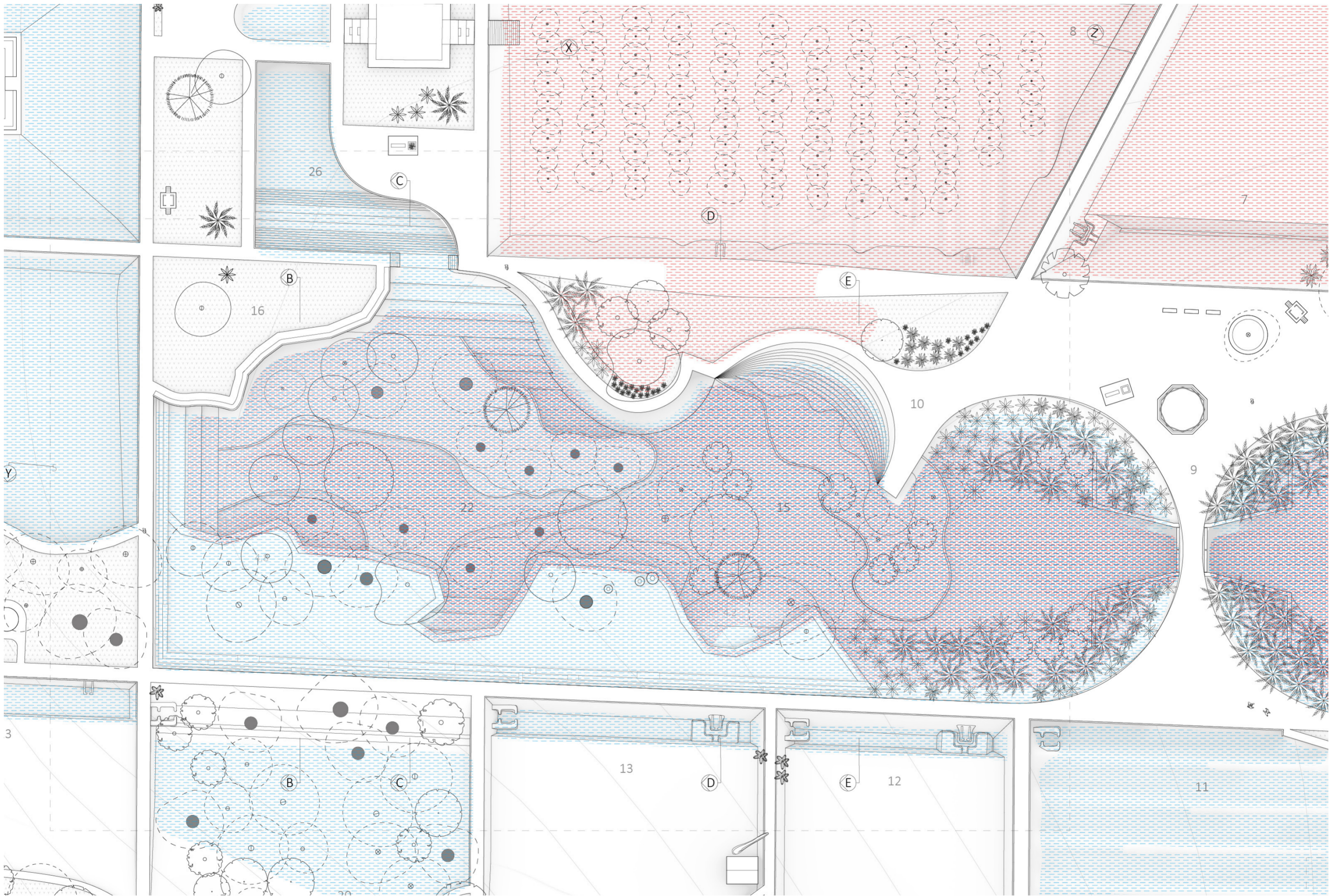
The Mudflat

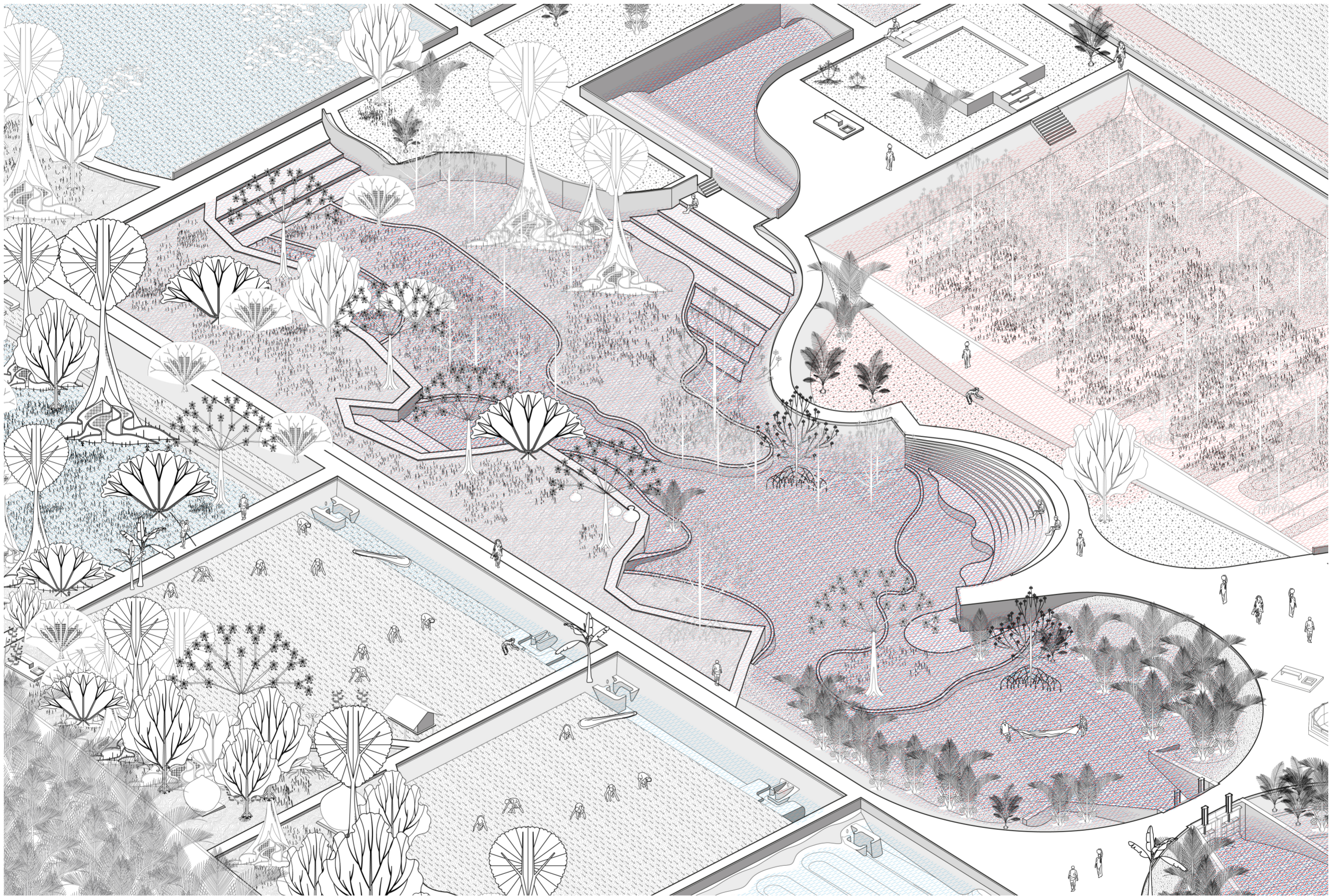
Shallow water from the monsoon tides that reaches the mudflat bring germinated seeds from the mangroves. The water also brings shrimp, fish, and crabs.

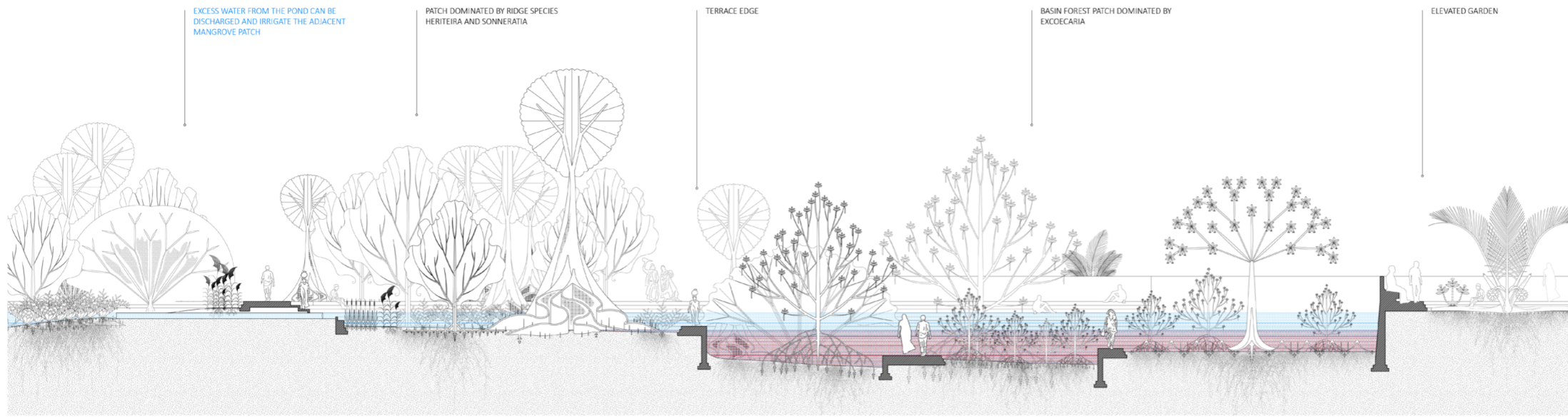


THE TIDAL POND

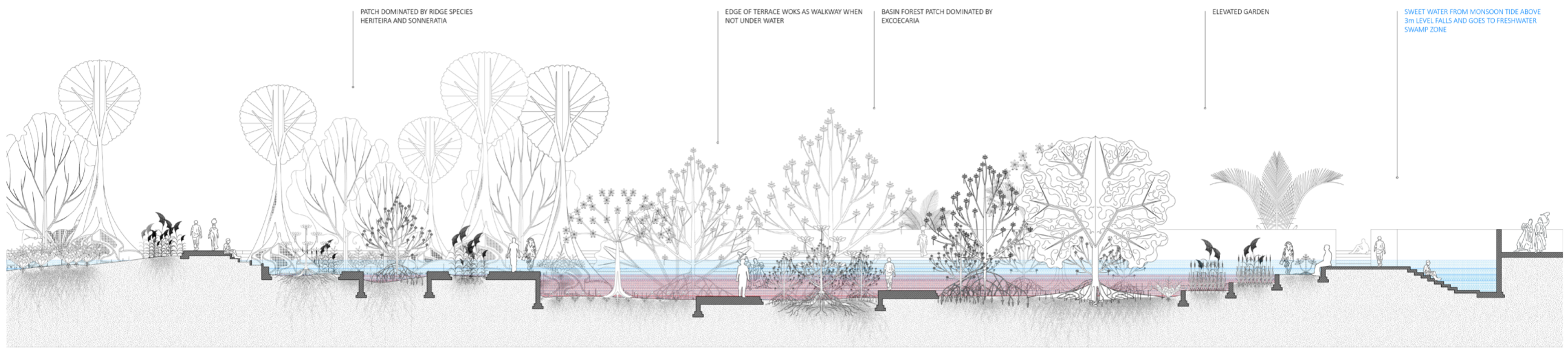
'VAANA' - Trail of the Goddess



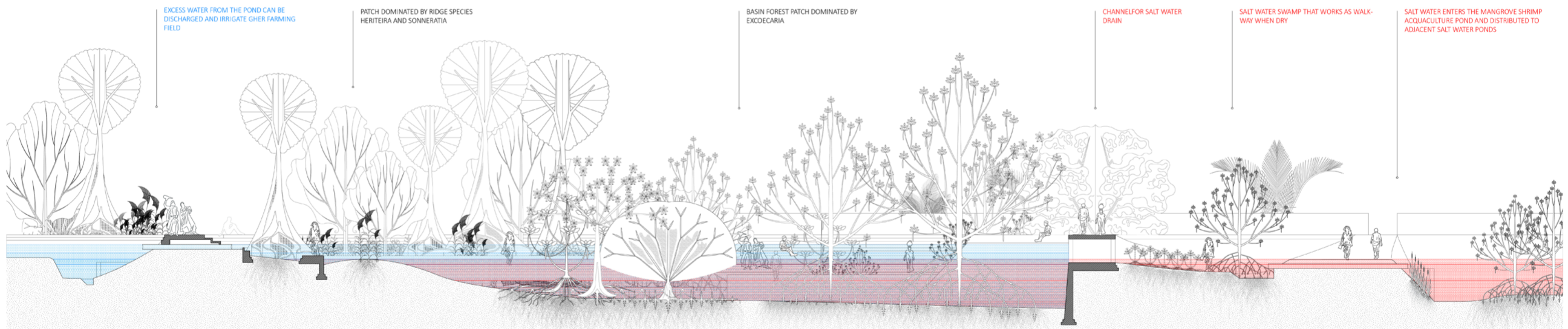




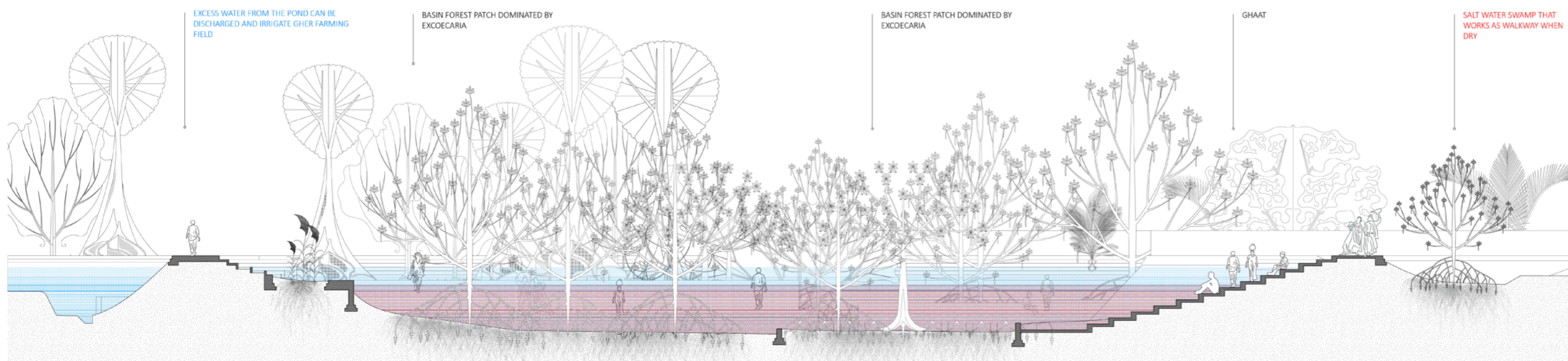
SECTION B



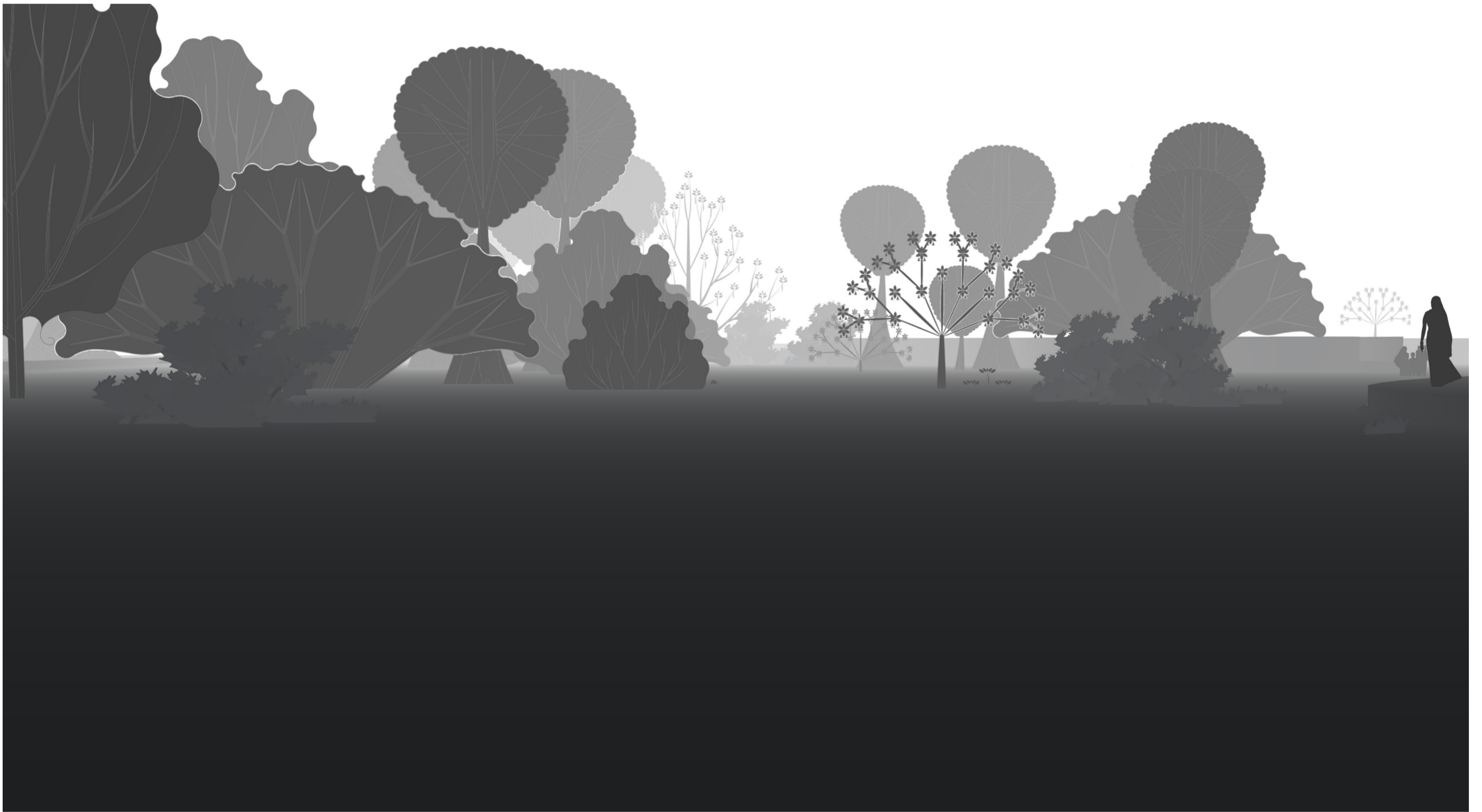
SECTION C



SECTION D



SECTION E



'Vaana'
The tide regularly inundates the tidal pond.



'Vaana'
Ebb tide starts curving out the trails inside the tidal pond.



'Vaana'
During the lowest tide most of the area becomes accessible.



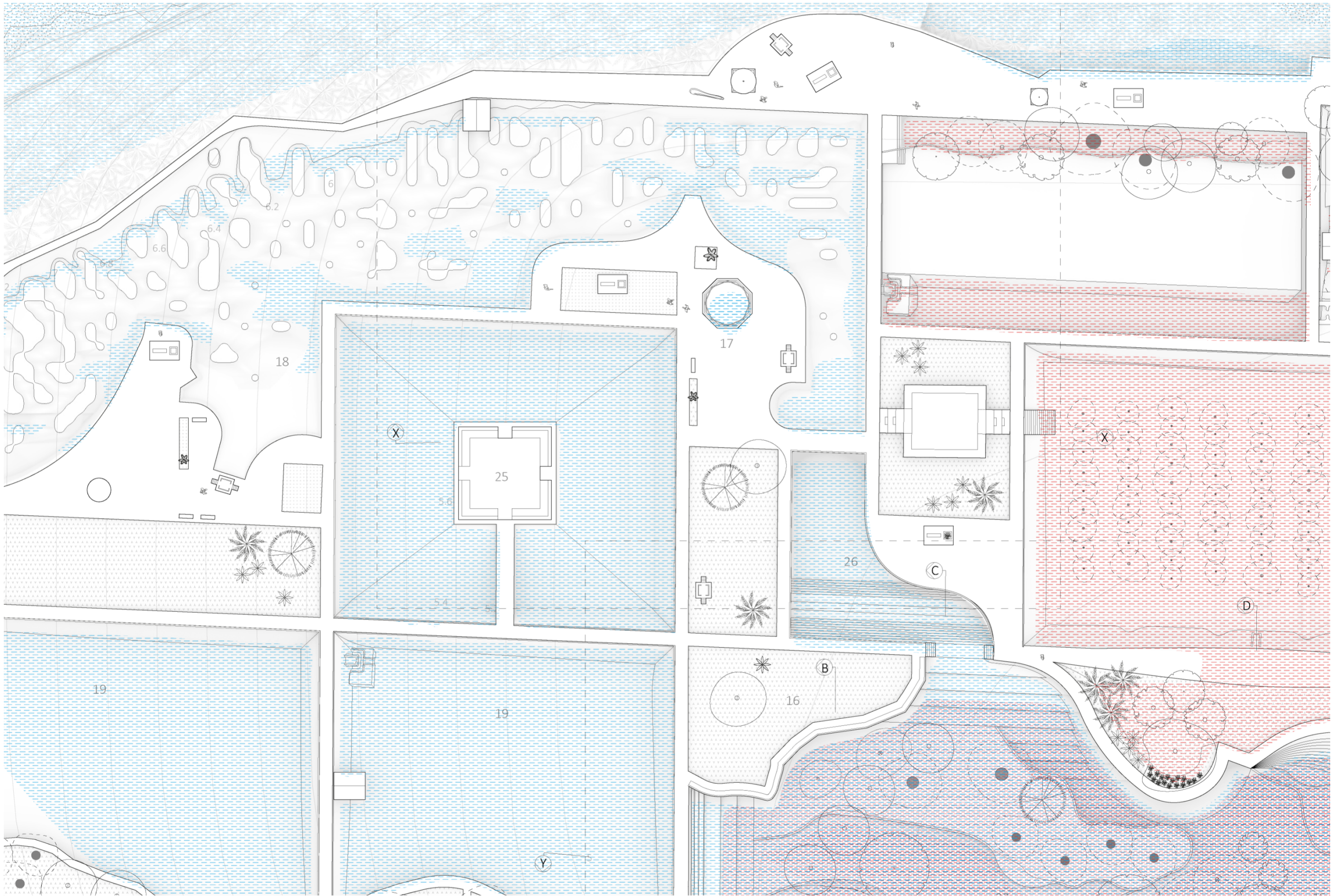
'Vaana'
The thin brick edged walkways can take one inside the deepest part of the trail.

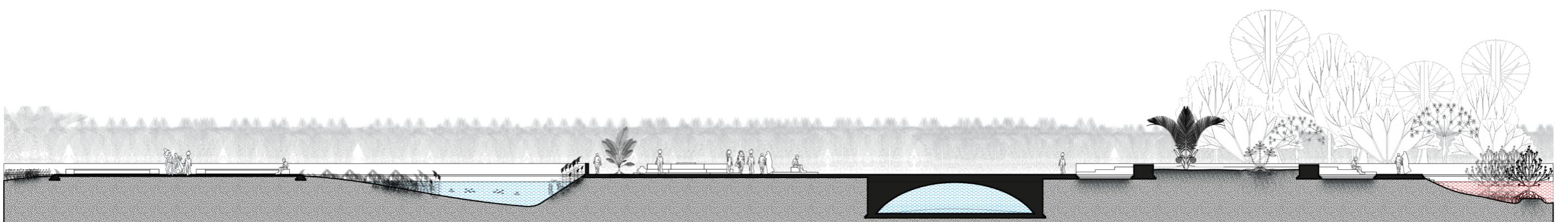
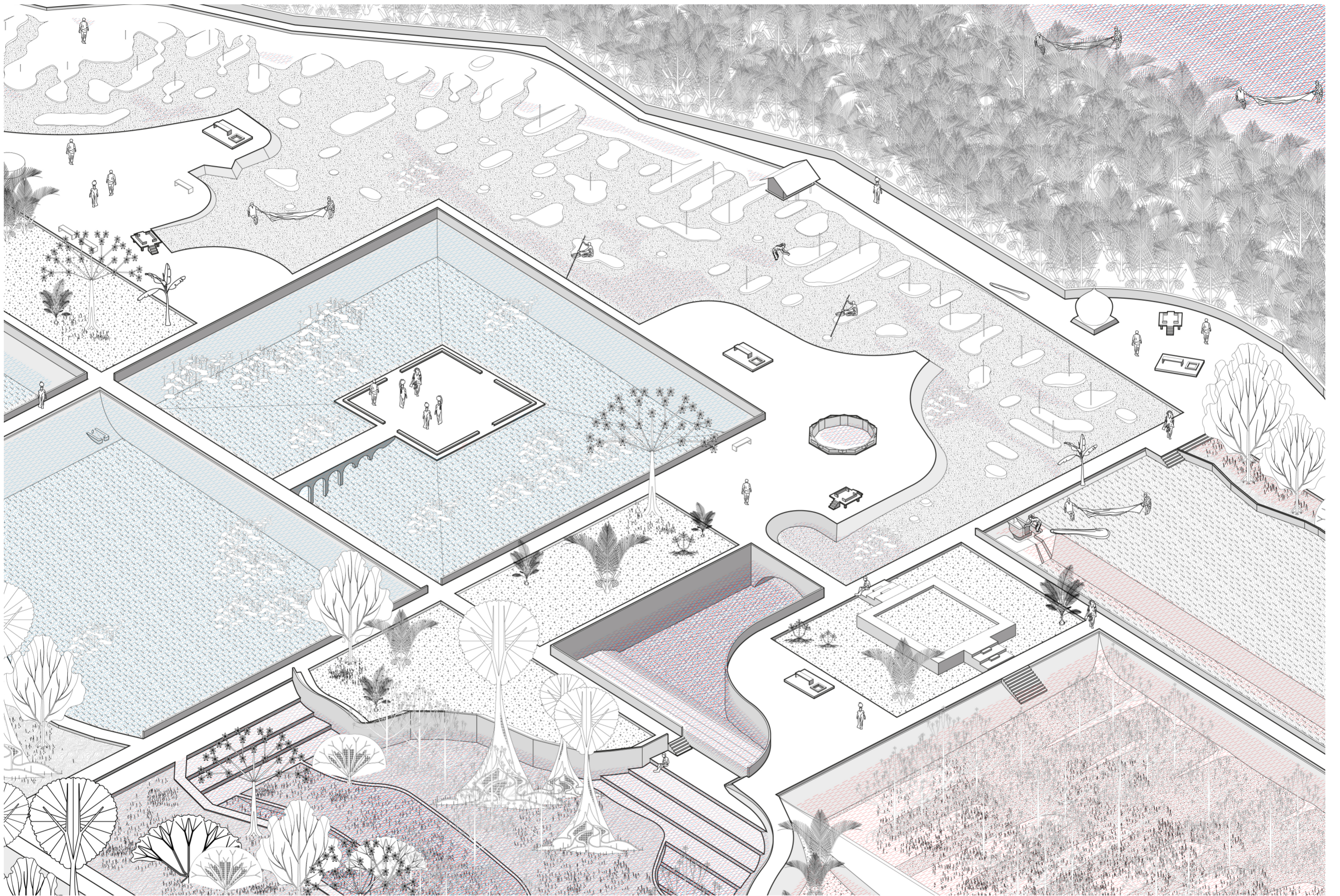


The freshwater farms

DARBAAR

Place for Gathering







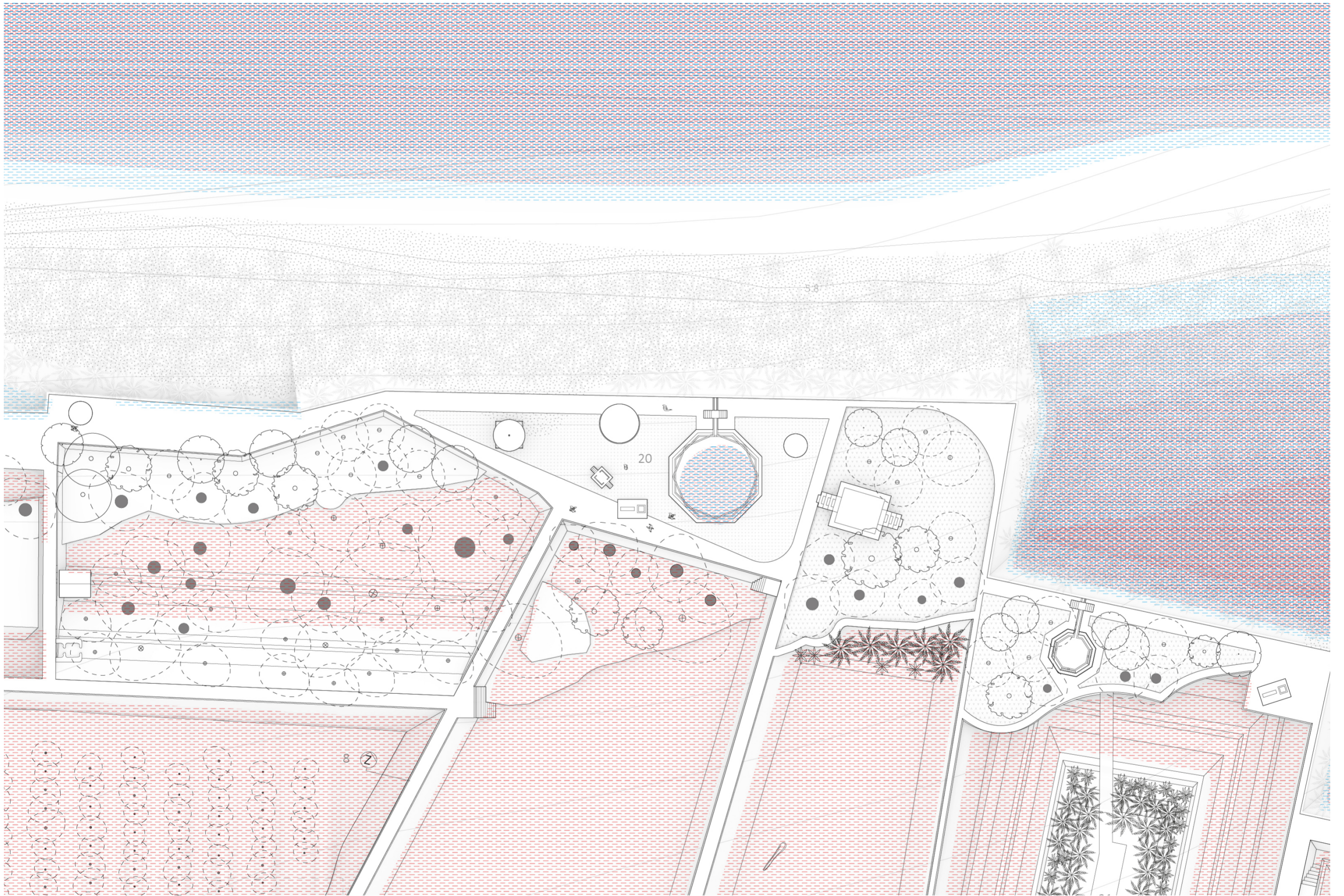
Trail to Darbaar from 'Vaana'



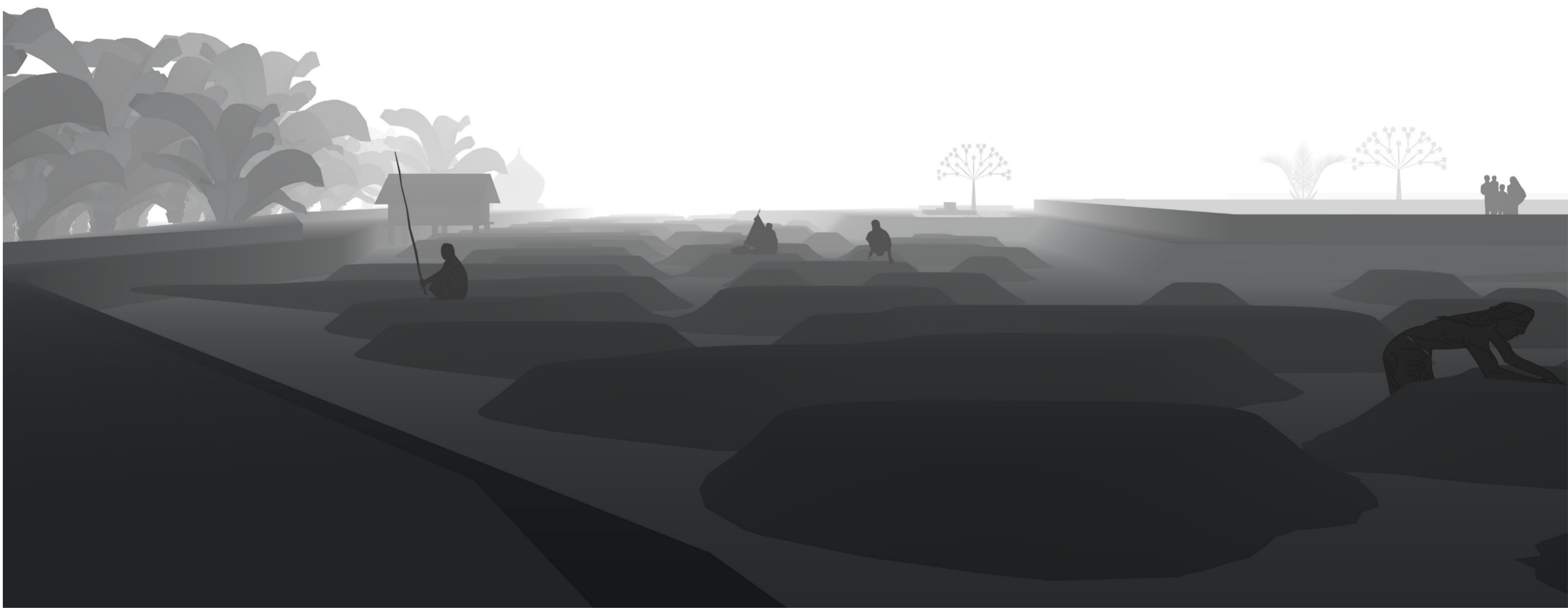




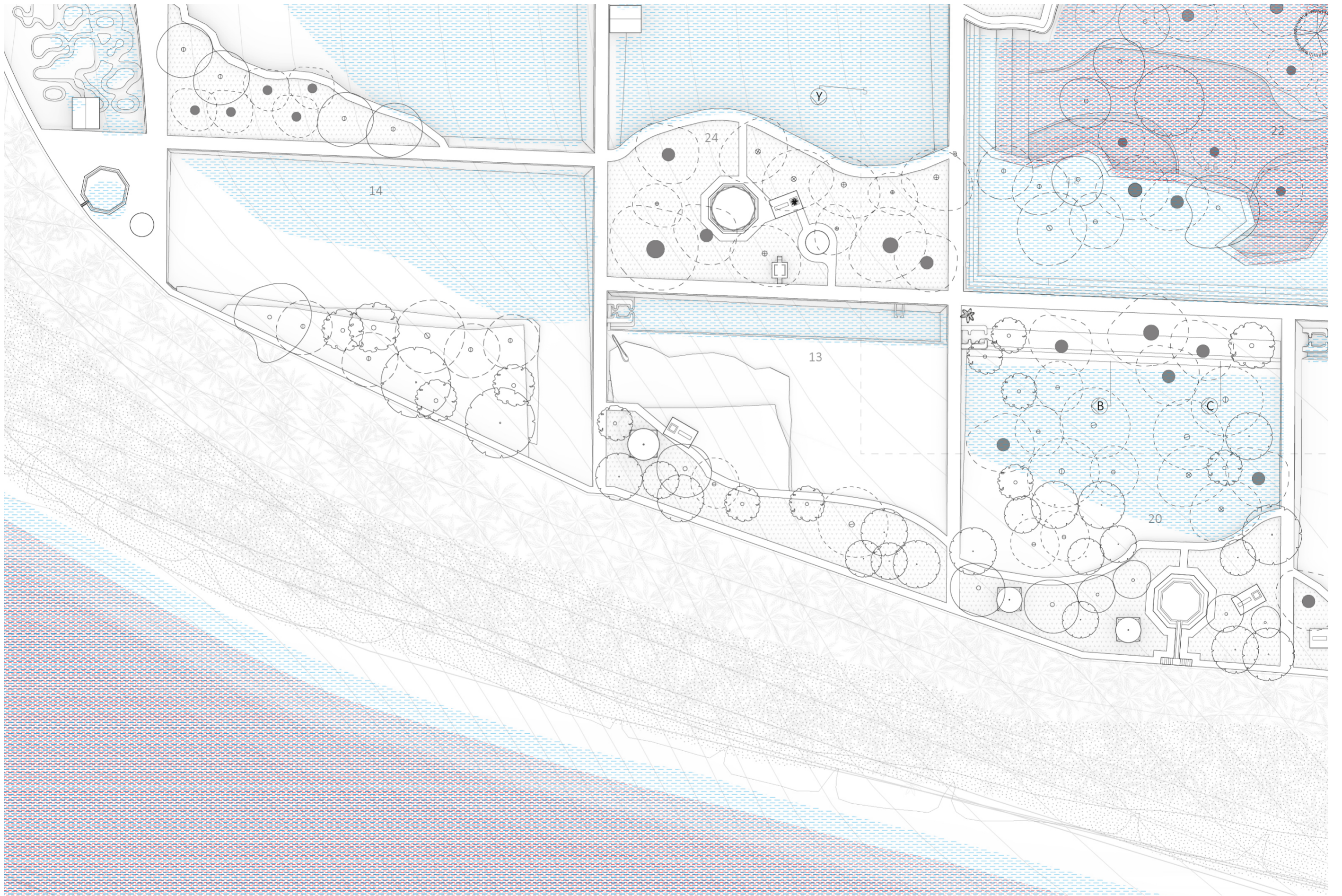
GARDEN OF THE RIDGES







FOUNTAIN OF THE SWAMPS





Fountain of Mangrove Swamps

At the edge, clearings are paved and public space is created.
At the center there is a fountain storage that collects water
from the edges of the palms during the king tides.