

NORDRE AKER

VESTRE AKER

SAGENE

BJERKE

ST. HAUGEN

GRÜNERLØKKA

FROGNER

SENTRUM

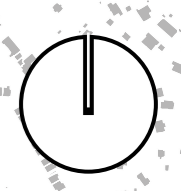
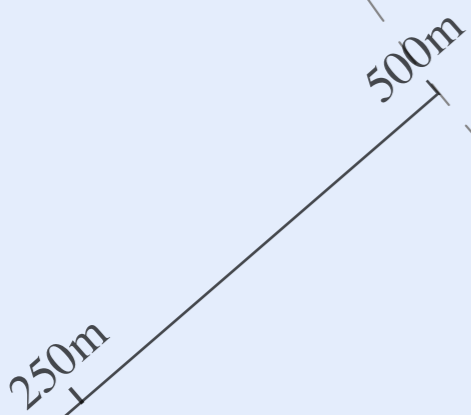
GAMLE OSLO

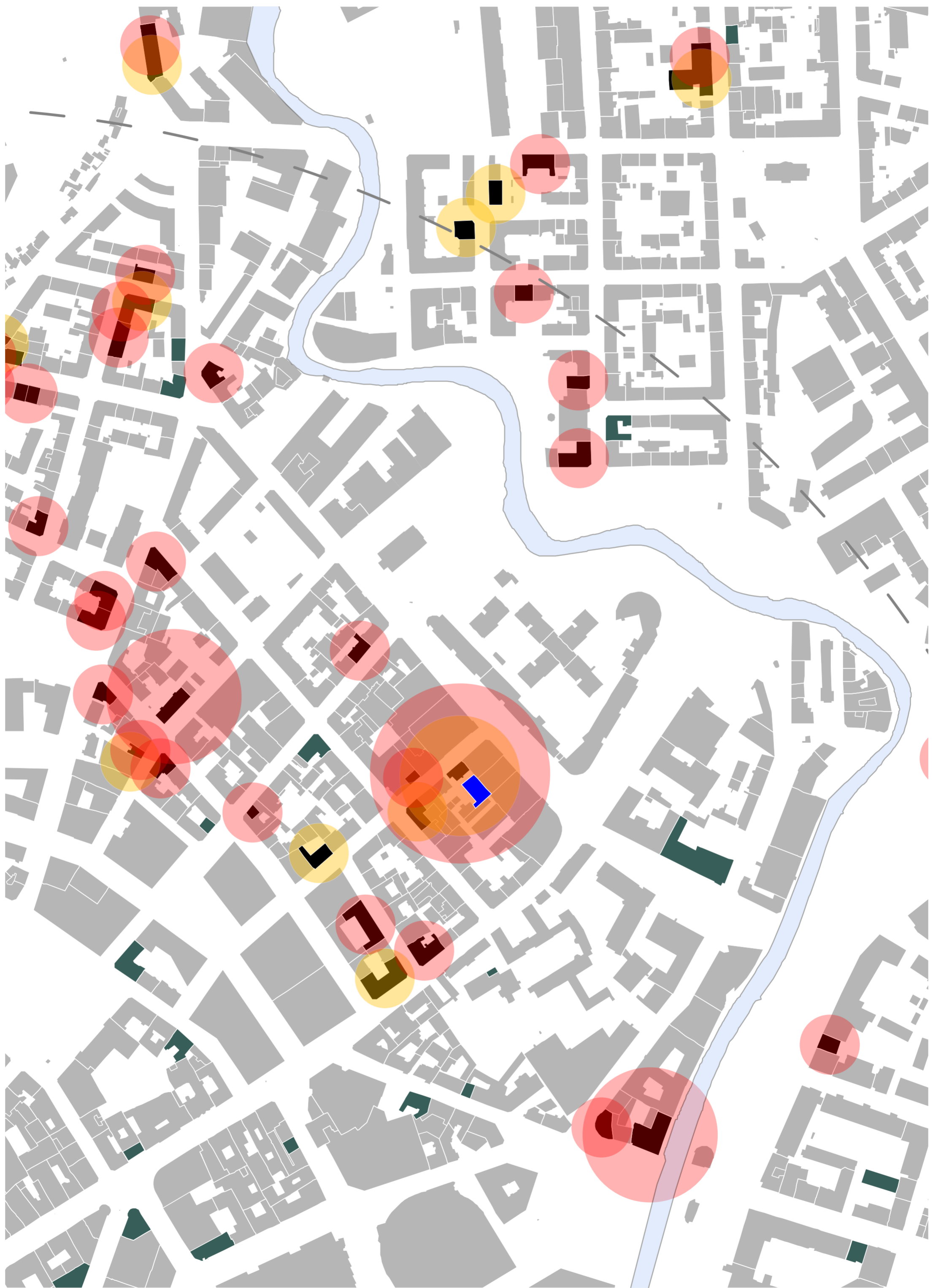
NORDSTRAND

OSLO

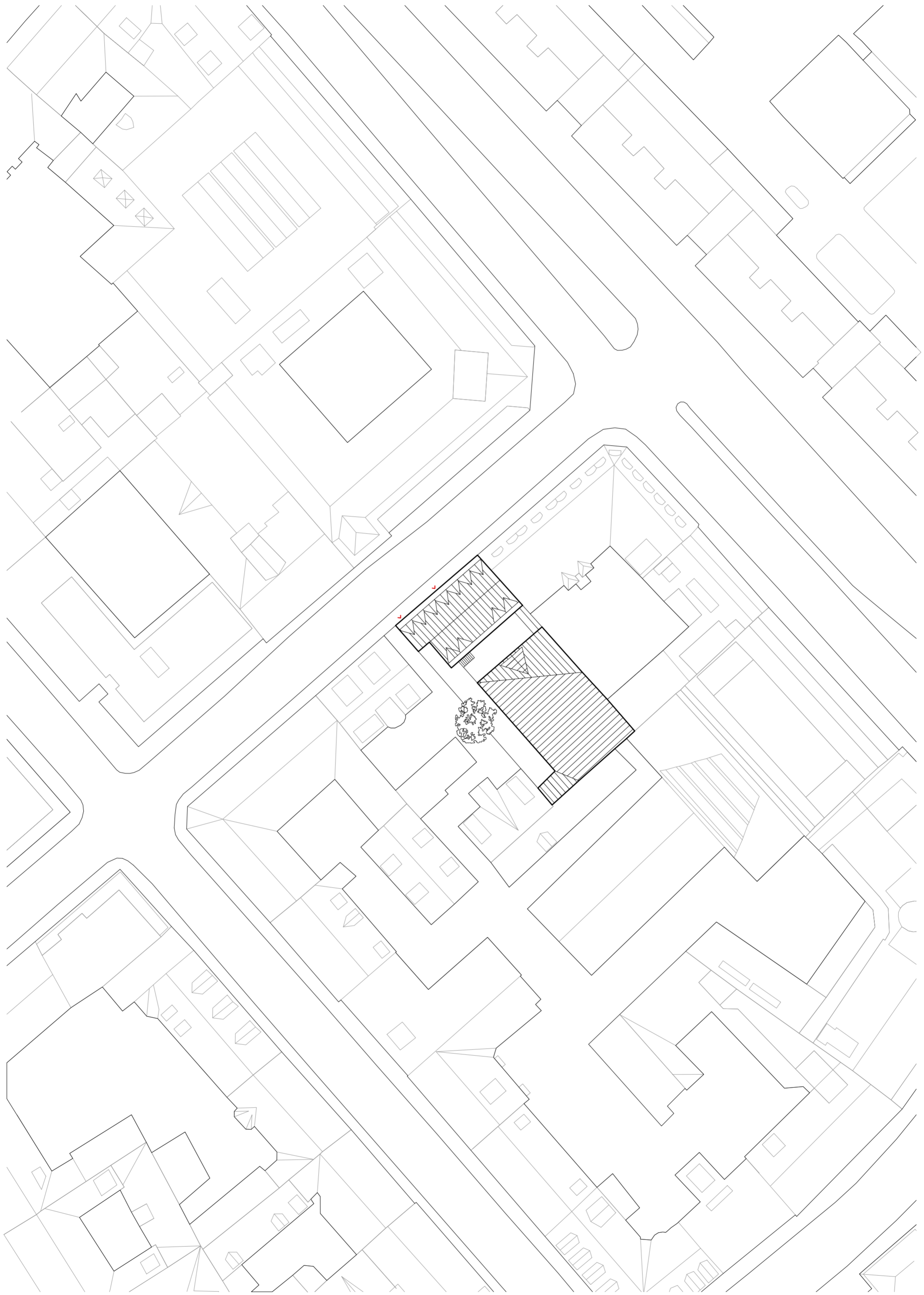
JEWISH PRESENCE 1942

- DISTRICTS
- ADDRESSES
- DEPORTED (INDIVIDUALS)
 - 15-21
 - 8-14
 - 1-7
- ESCAPED (INDIVIDUALS)
- SYNAGOGUES
- CONFISCATED STORES





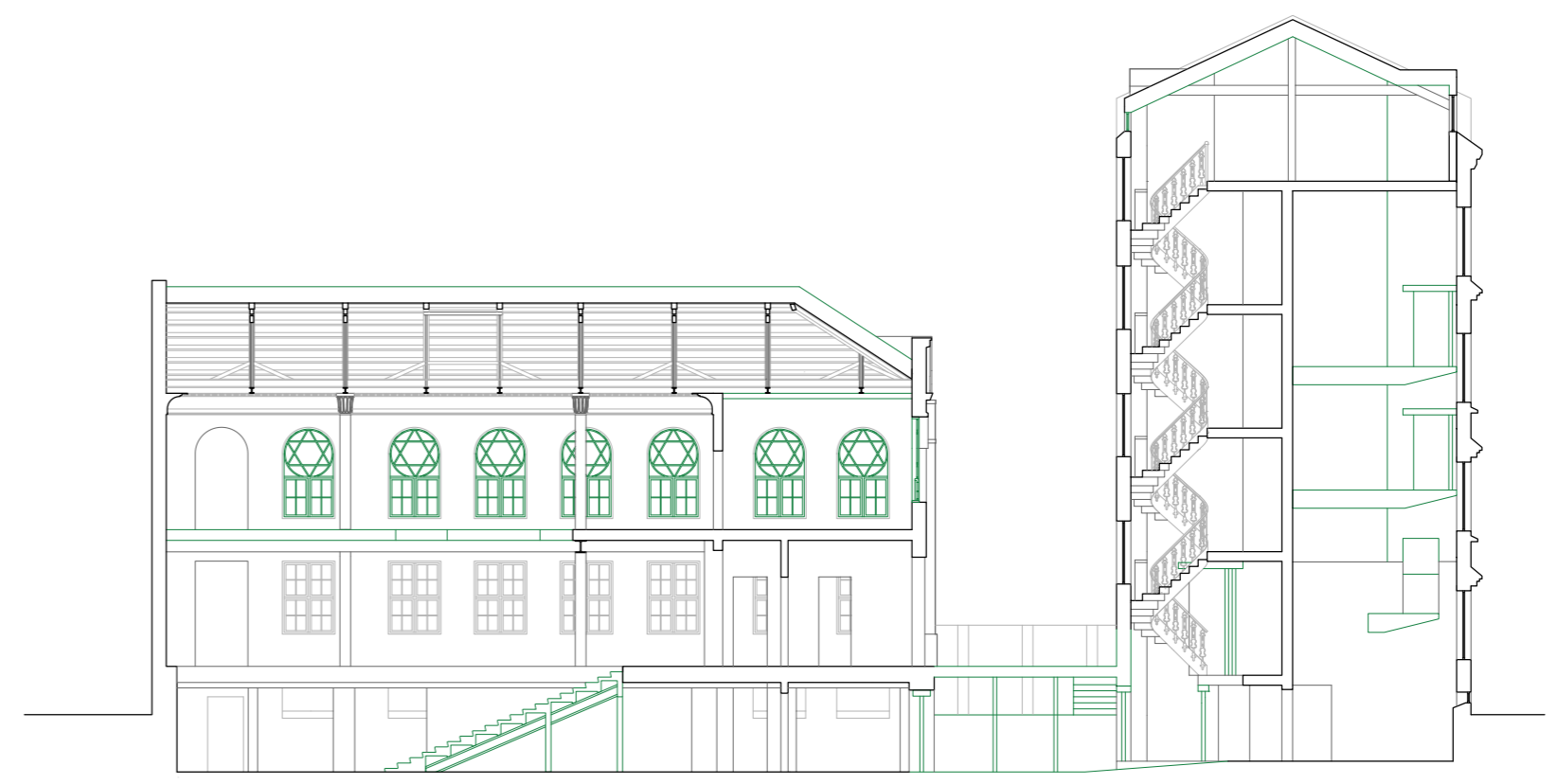
The Hausmann quarters and the surrounding area.



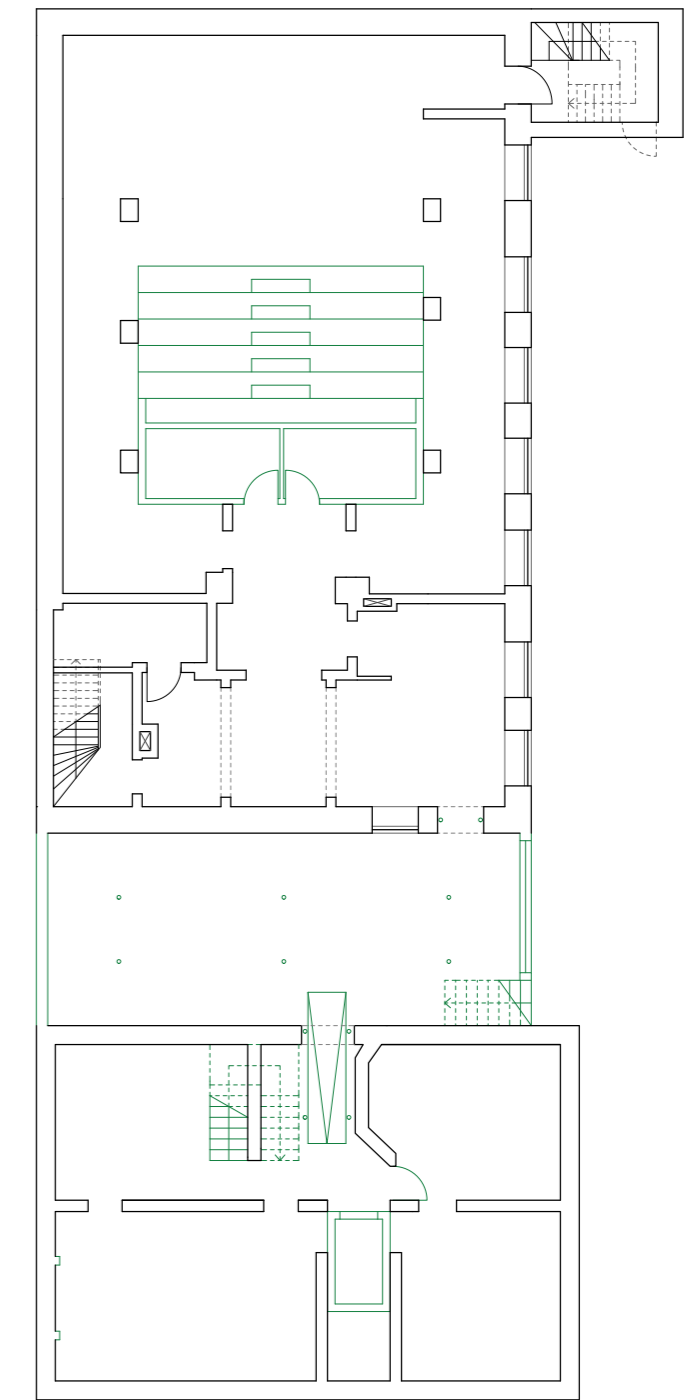
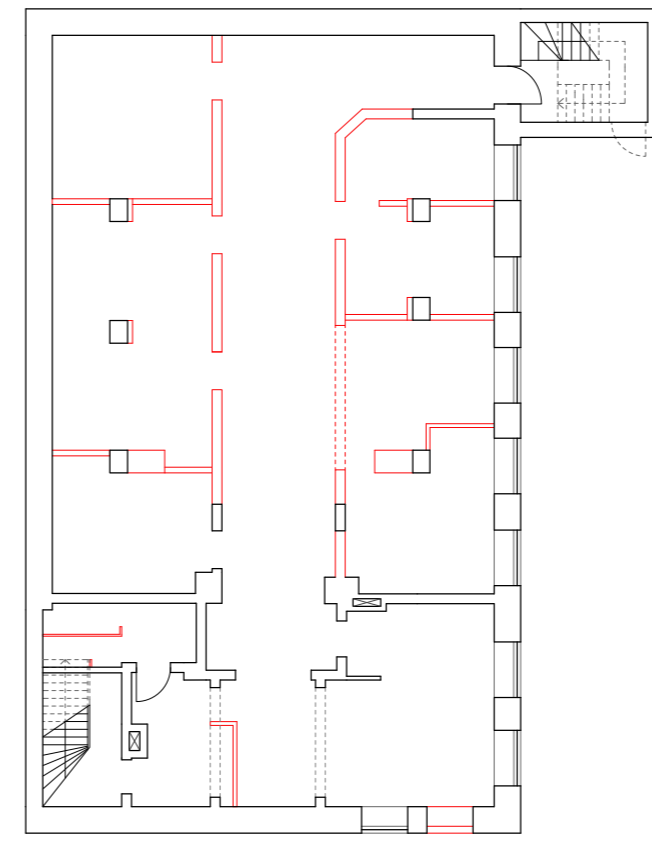
- Existing
- Demolished
- New



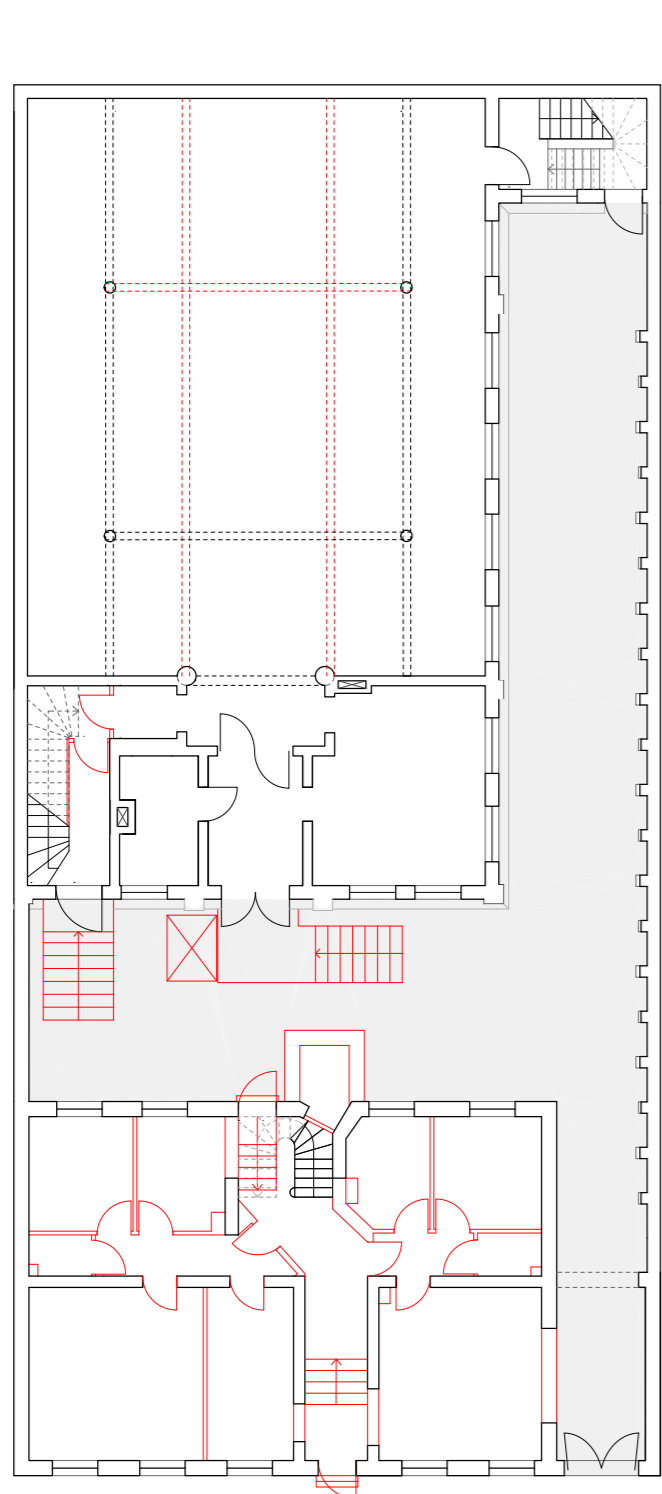
Section AA



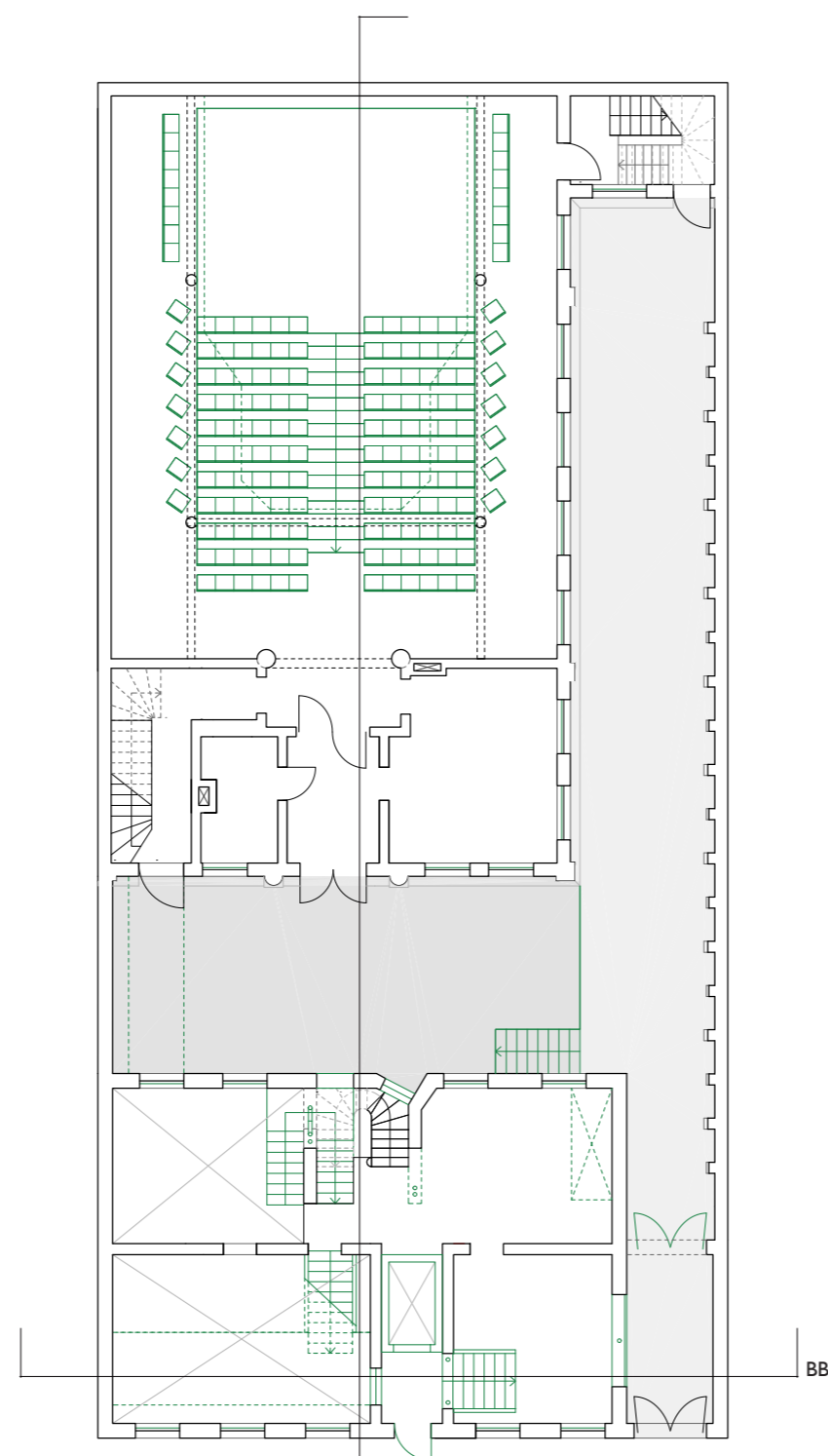
Section BB



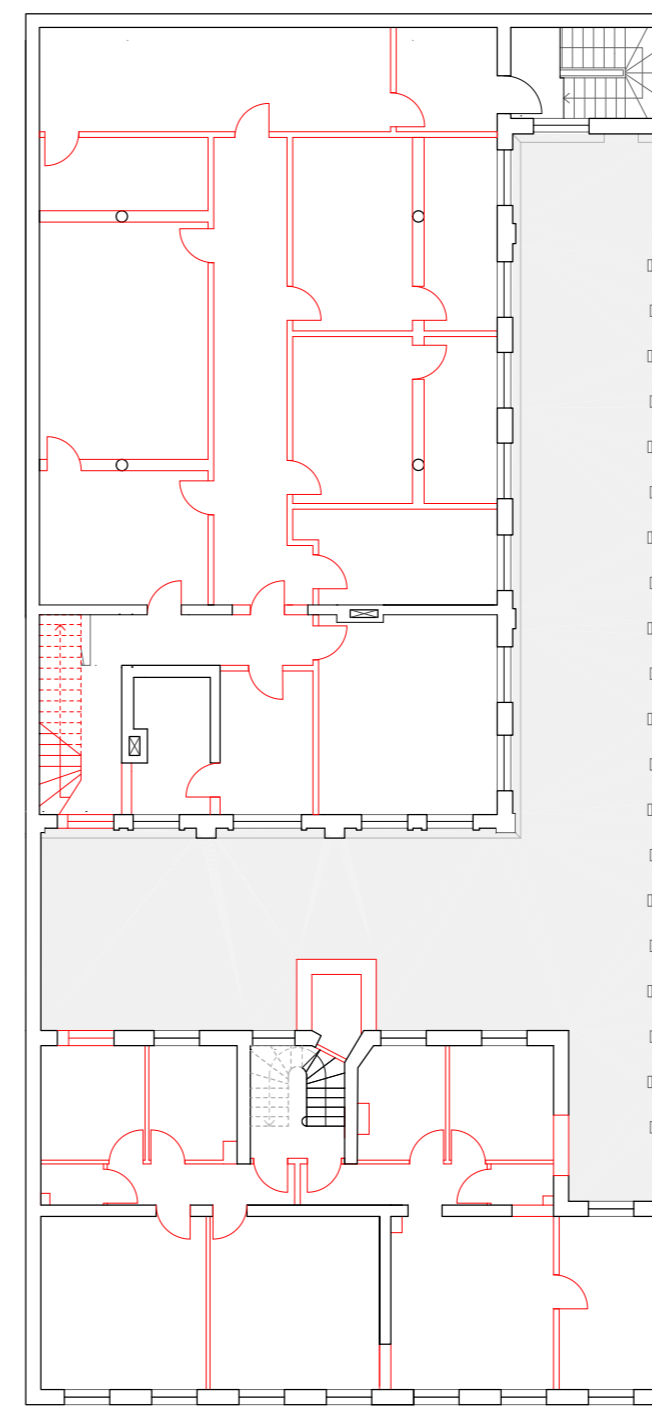
Underground floor



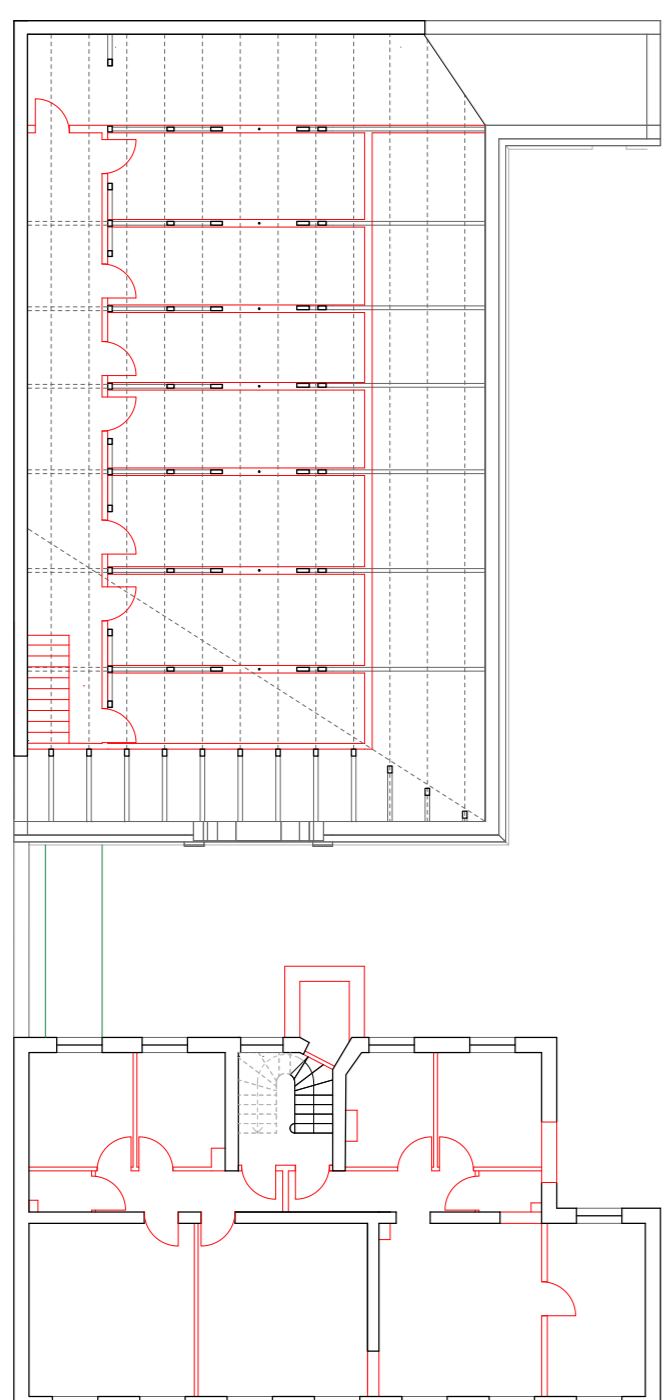
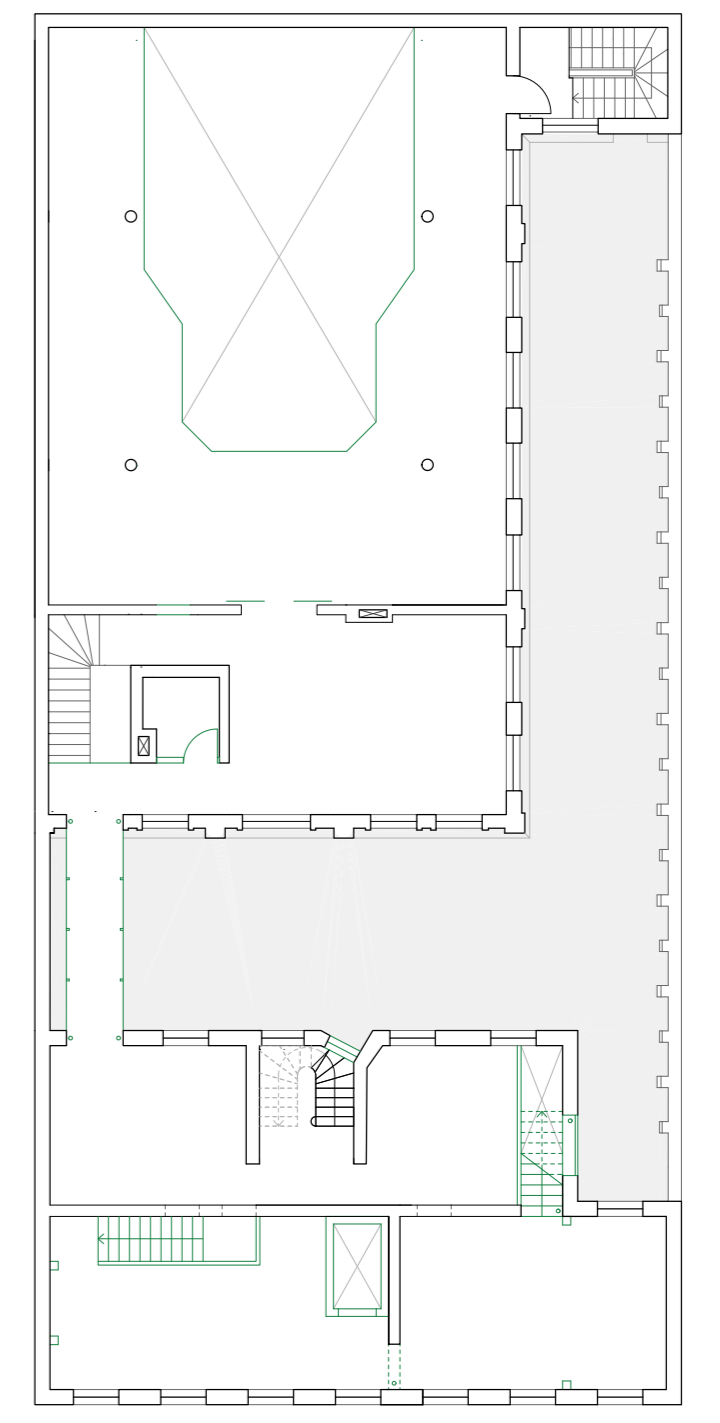
Ground floor



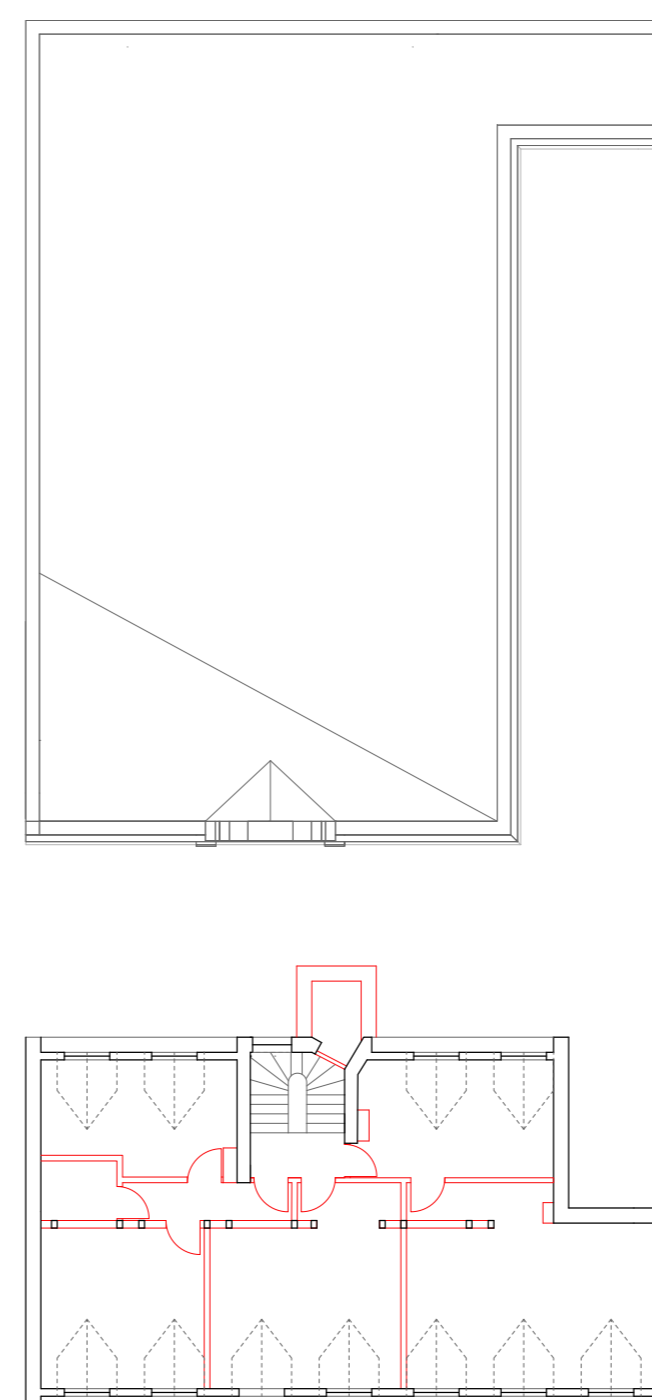
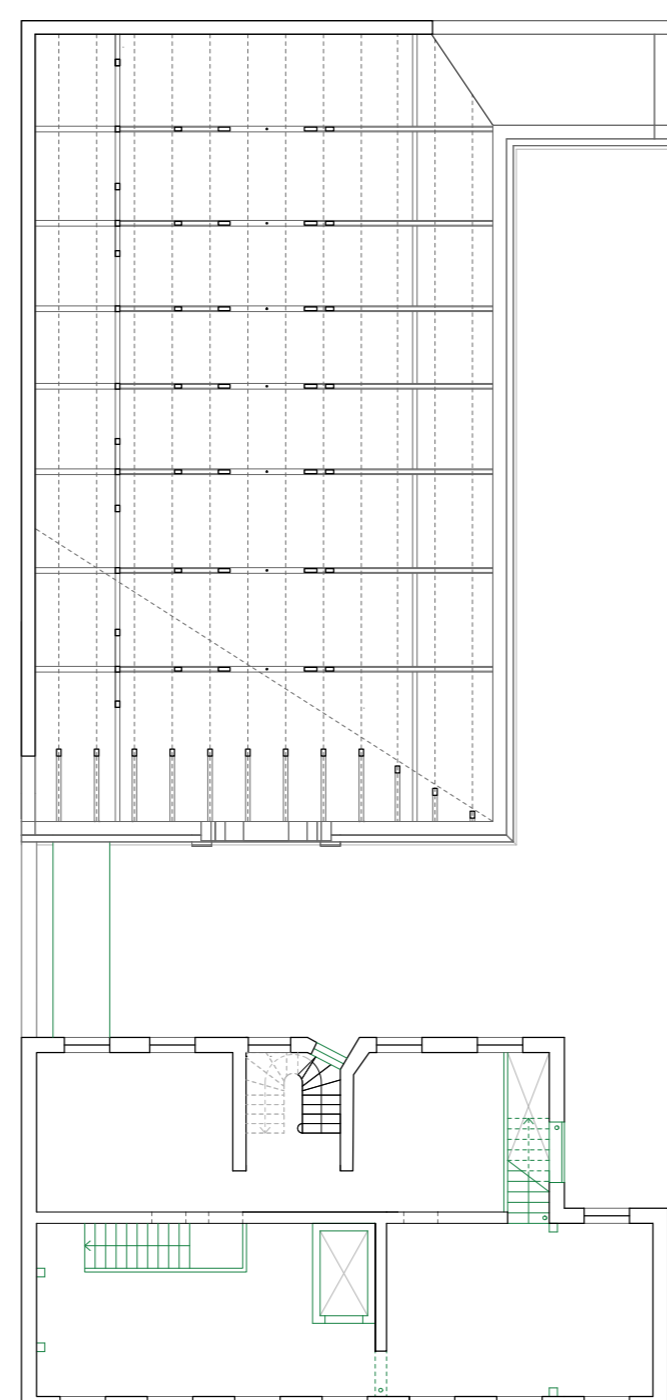
AA



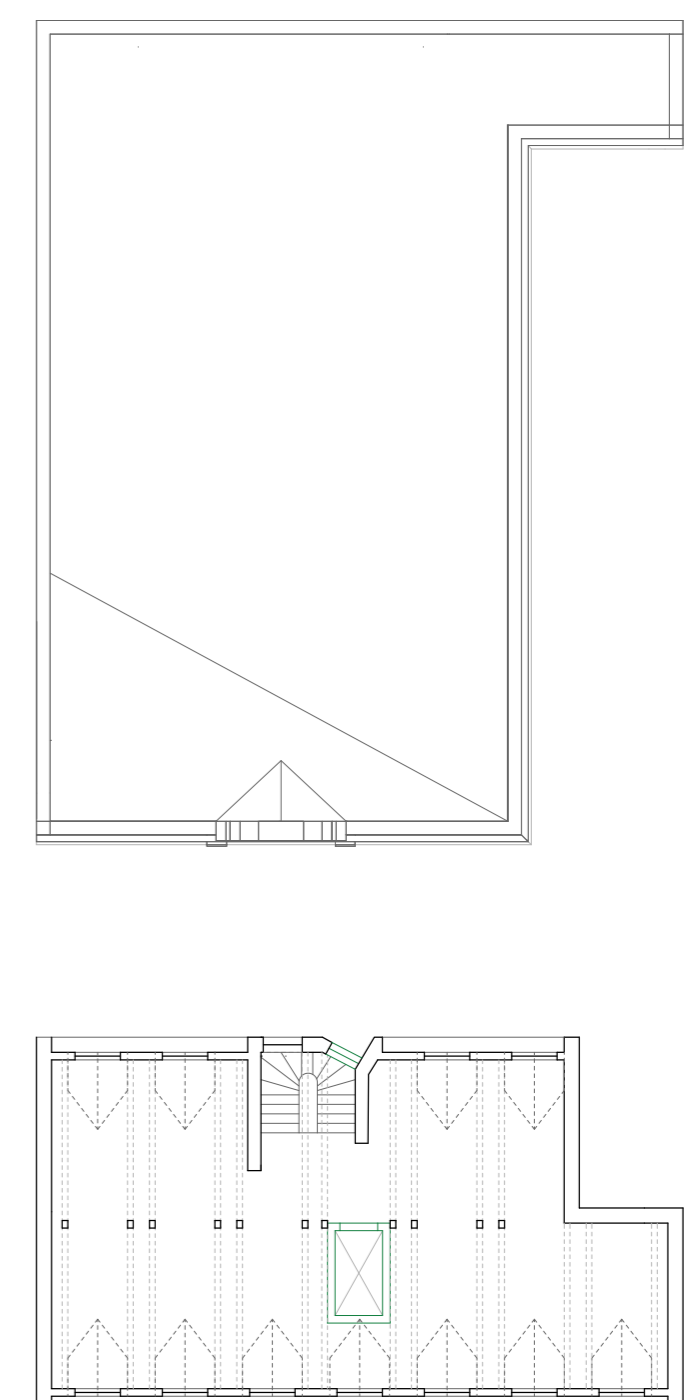
First floor

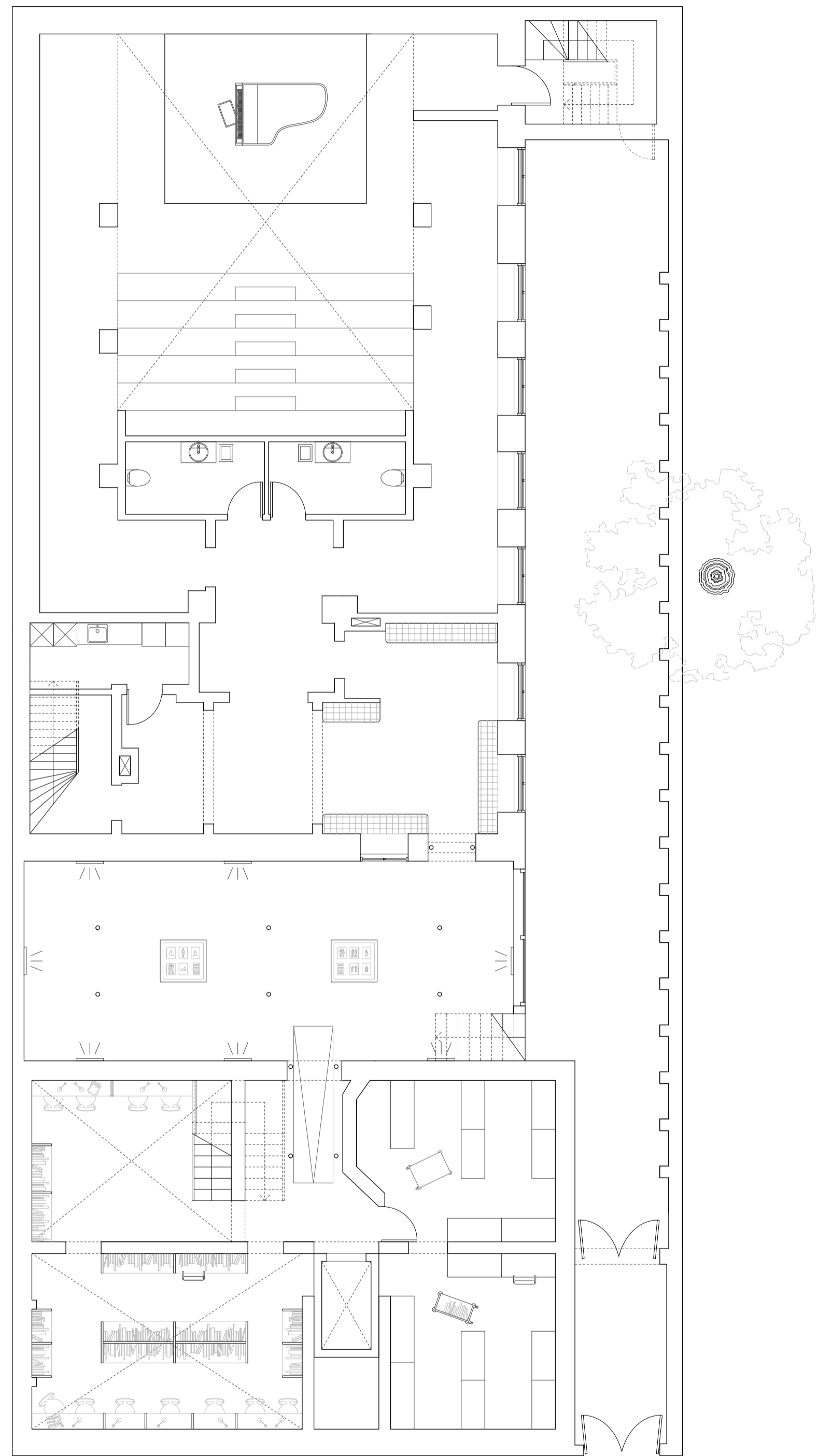


Third floor

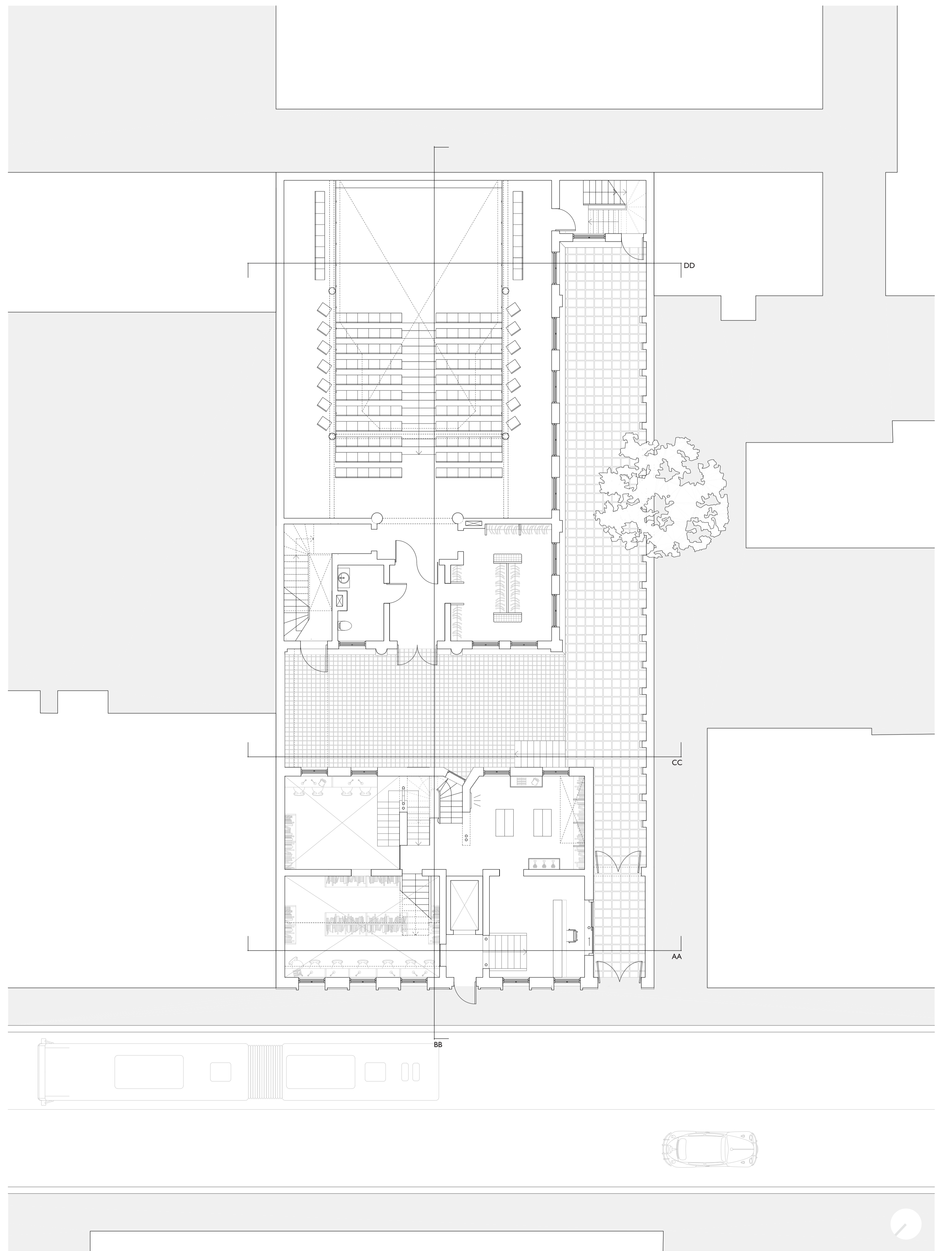


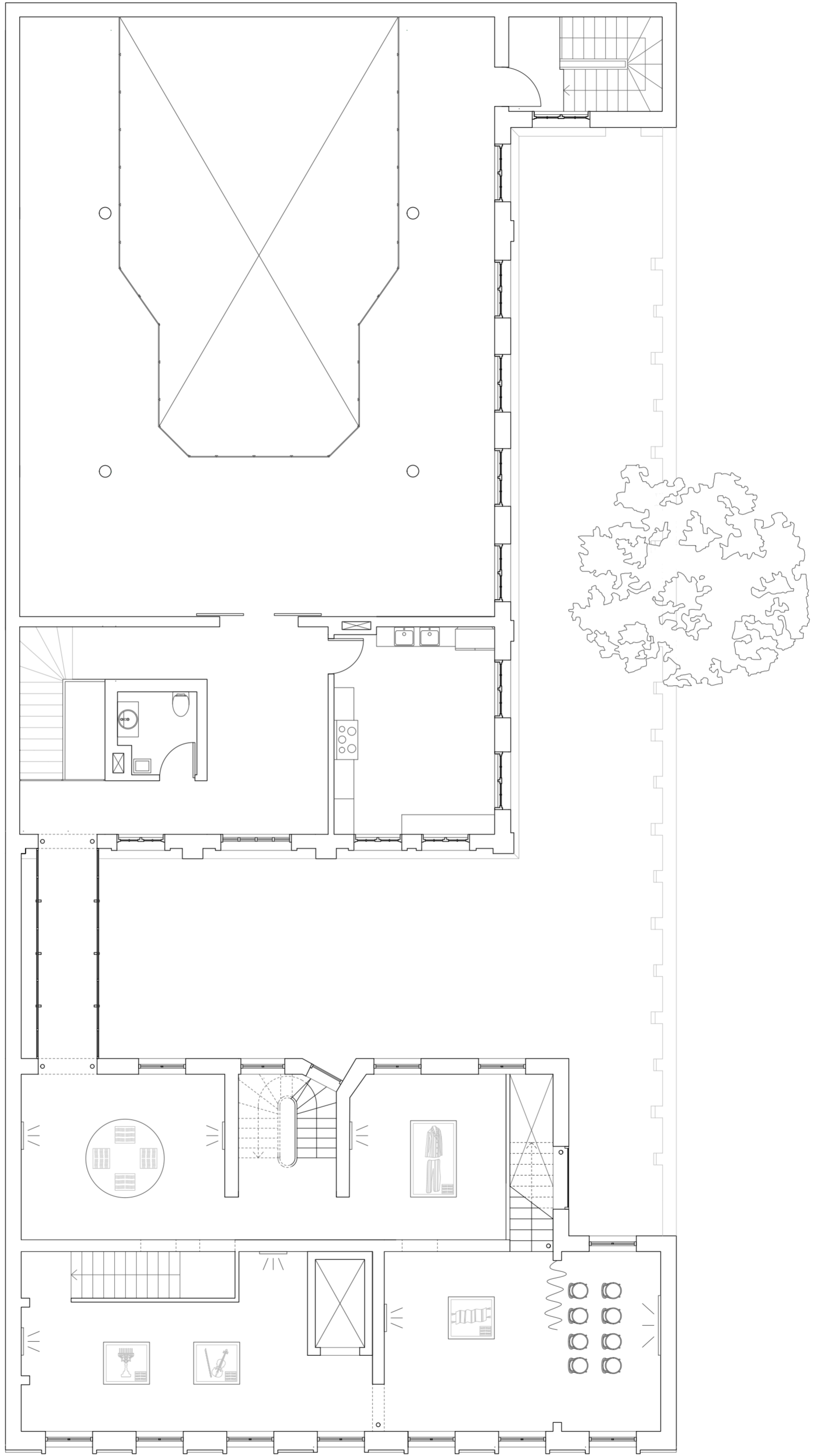
Top floor





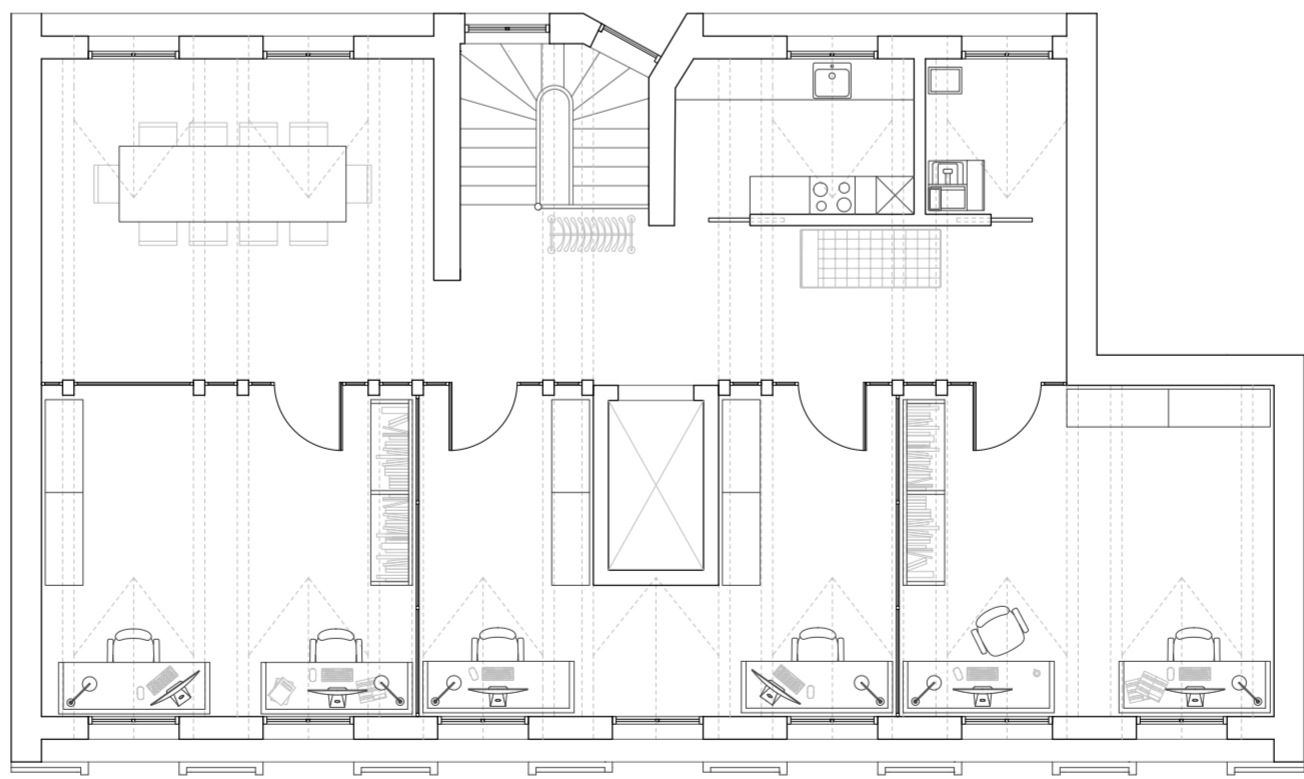
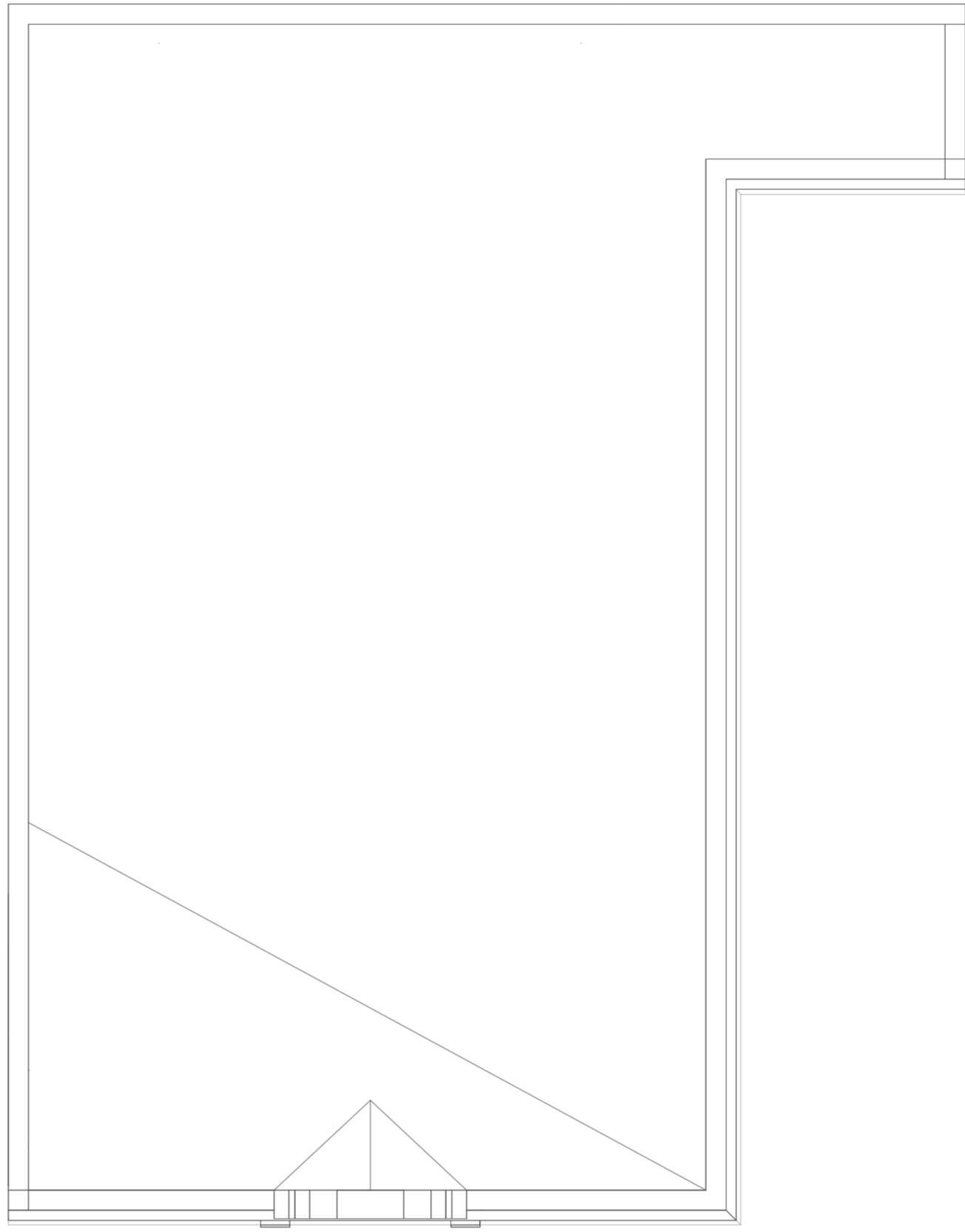
0 1 5





0 1 5

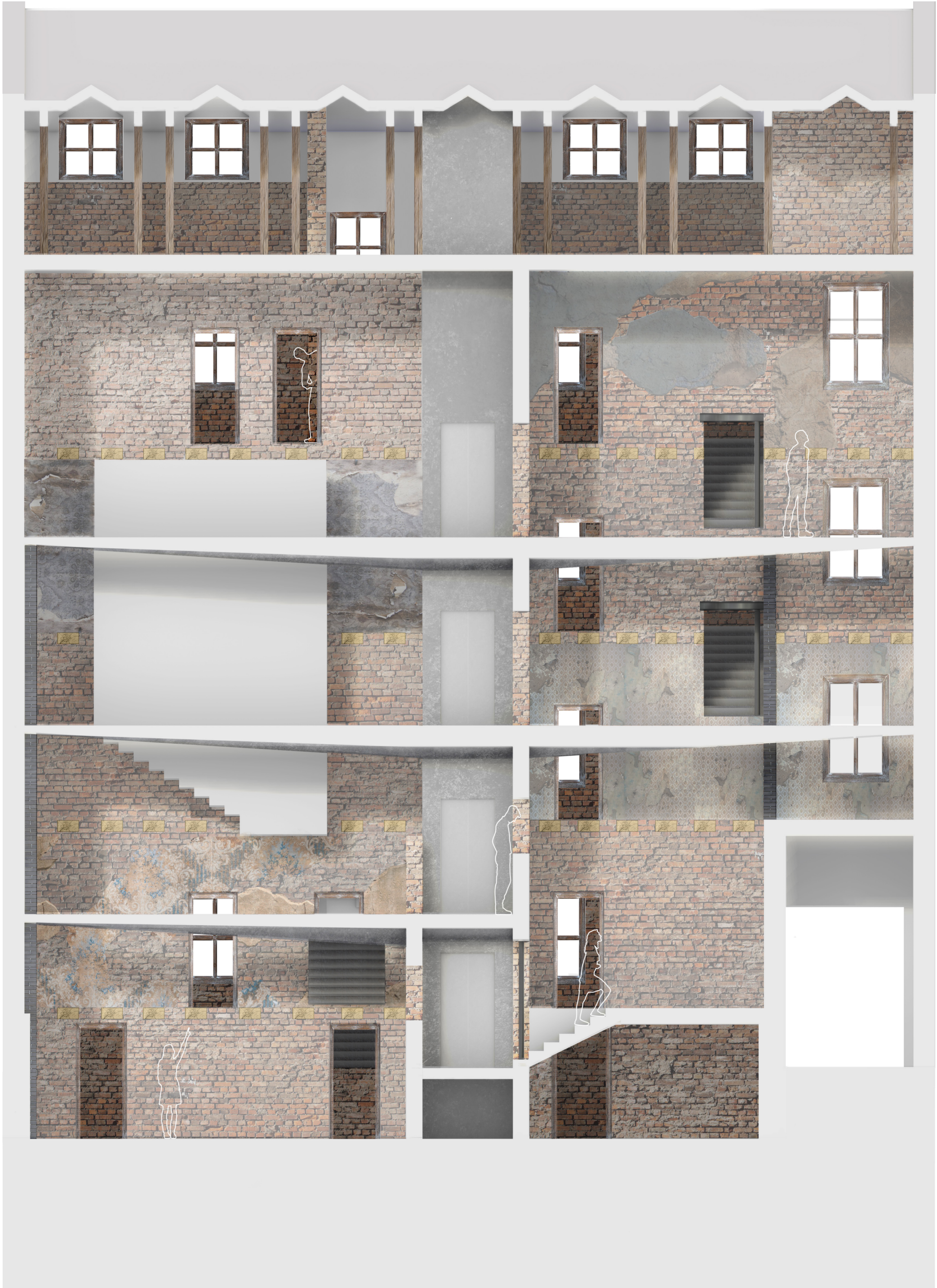


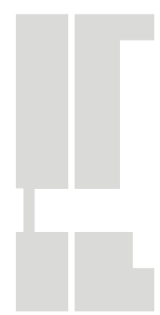
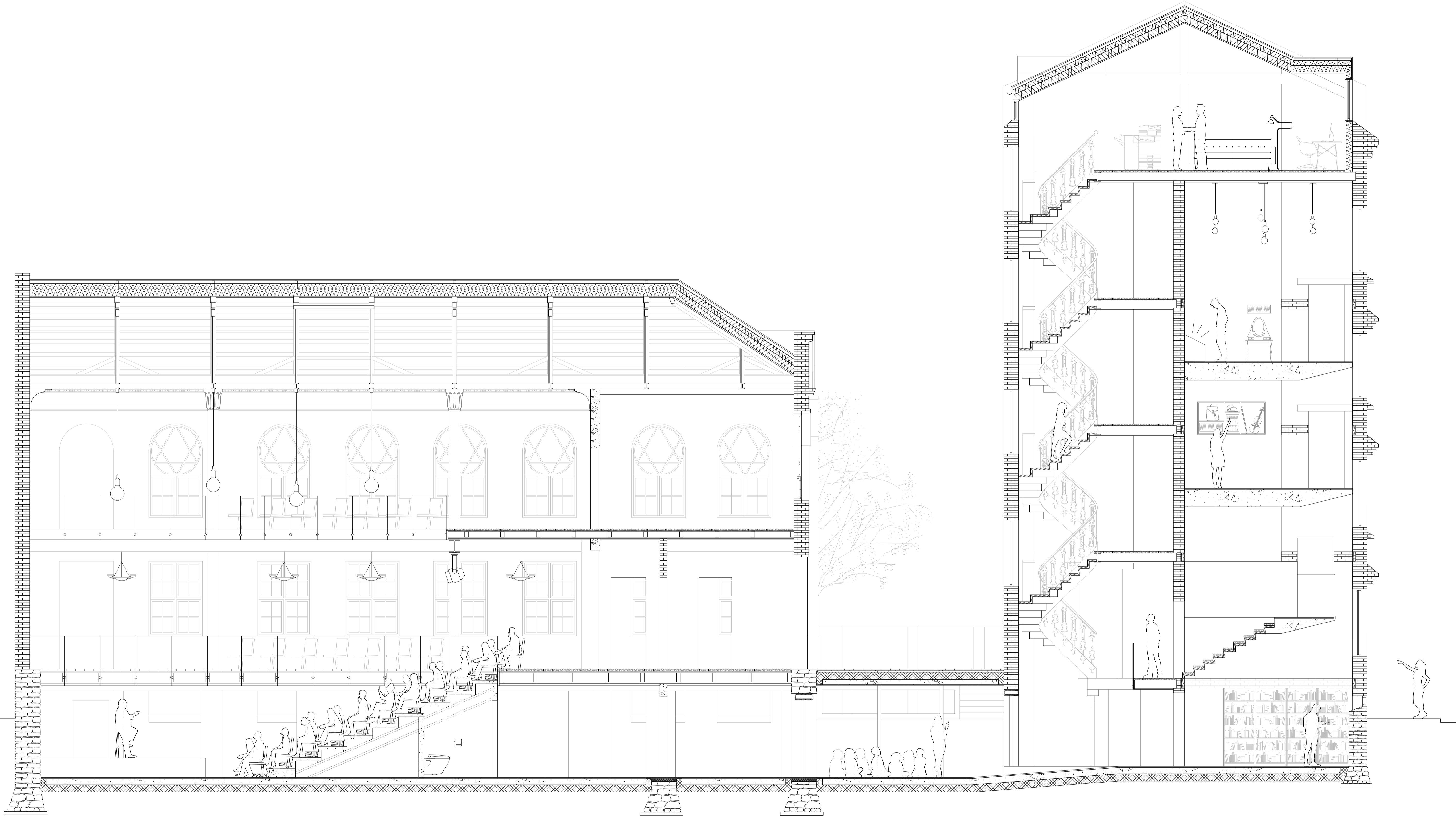


0 1 5









0 1 5



0 1 5





Façade detail, seen from the street (model photo)



View from mezzanine, exhibition space (model photo)



View from courtyard, south-east façade (model photo)



View from first floor, hall (model photo)



View from mezzanine, hall (model photo)



View from mezzanine, hall (model photo)