

Abstract

I once visited a place that has many layers. Many layers of time, of history, of sand and stone. There are traces of settlements and people that lived here a thousand years ago. Some of them are so old that they are mostly guesses and assumptions. There are traces of war, of animals and of humans. I went to this place. I brought with me my body and almost nothing else.

The beginning

Lista

For four months, January until April, I went to live by the South Coast together with a friend in a borrowed cabin. We got to know the place and tried to embrace whatever came our way. This is a quiet place during the winter and we met few people, but the once we met all had their very own stories and links to different places in the varies landscapes here. Some people had once left, only to return. Some had never, and could never, imagine leaving. Others again had left for different reasons, but could not wait to go back. Very few here were visitors, like us. To get to know people can be a slow process, but to become familiar with a landscape is something that can be both immediate and surprising. I got to know this landscapes - with the merciless wind, but also with the mild winter and the soft, pale light. During the stay, I investigated the different elements found here - their stories, and the different places they come from.

To see the human as an isolated element in the landscape has always interested me. The act of building and constructing something by using what is found at a given place, is to me a primitive necessity, and perhaps also something that deep down is inherent in most people. In addition to this, I find it fascinating to handle materials that are in a human scale. I think working with our hands in many ways creates a deeper closeness to the creation, at the same time as it opens for the possibility of developing a feeling of belonging to a particular place.

These months of discoveries, experiences and explorations along the weather-hardened shores evoked a desire, or necessity, to gather the stories of this lands, but also the people connected to it, in or within an architecture. As the pandemic made us leave the landscapes and return to Oslo and the city, I knew that I longed to go back. I wanted to go back to Lista, but this time I would bring my sisters with me.



Isolated structures. 2020. built while Living in Lista

The creating of a sisterhood

Sister

The word *sister* is something that stands close to me. It represents familiarity or things that I relate deeply to. Sisters could be those who already know your thoughts without the need for words. They could be the once to follow, or they could be the followers. They could challenge, provoke or ally with each other. They are, to me, in many ways a base for safety and recognition.

I started the process of adding a sisterhood of shelters along the coast line. For people to seek for and dwell in, as an addition to visit, seek and dwell in this landscape. By developing structures that are framing the views of the sand dunes and the windswept grass while balancing on wooden poles buried in the sandy soil, my approach was to represent both the fragility of this lands as well as the hardy elements of it. I wanted some to be carefully placed on unshakable sturdy stones, others to merge into the woods and adapt the tree trunk's ability to shield from the wind. Working through several models, drawings of sites and landscapes, I searched for the once that longed the most for going back to the Lista lands. As they became five sisters related to five sites.

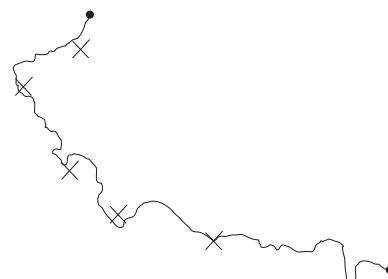
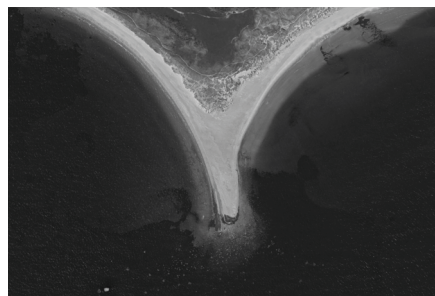
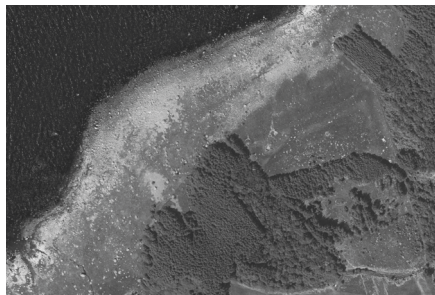
one by the black forest

one by the moraine beach

one by the molo (breakwater)

one by the bunker row

one by the sand tip



The Returning

Structures

The five structures are all separate individuals and they will bring their own tools and characters, yet they travel together as a whole. This structures have never been in Lista before, but they are now ready to go back to the land of their ancestors, as this landscapes are the places that gave birth to them. They will go there and they will know where to place themselves, being fully equipped for the various tasks that they know they are going to face. The structures do adapt to the different chosen sites, and in addition, this particular places will be ready to greet them when they finally do arrive.

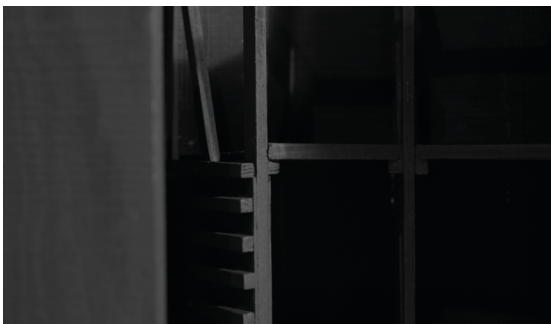
The Twins

The Tower

The Wave

The Fireplace

The Tide House



the five structures. close up pictures of models 1:20.

About

This Diploma contains the following documents:

Abstract - A brief summary of the projects background

Program - Pre diploma providing background for the project

Book - The collected overall diploma project in three parts:
Part 1 - Introduction and presentation of sites
Part 2 - Process and creating
Part 3 - Presentation of the five final structures including
model photos, illustrations, drawings

Additional:

Film - Short clips of landscapes and moments from the months spent in Lista. 1 minute.

Diary - Diary and sketchbook

Sketches - Pictures of additional sketch models and drawings