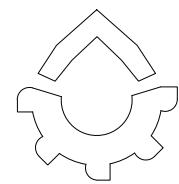
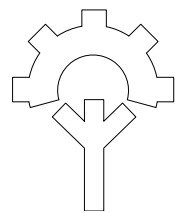


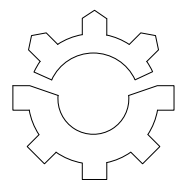
A DISTRICT UPRAISE The project aims to lift a district community. In Norway, data centers, and bathing facilities are mostly centered around eastern Norway. But international companies rarely look at this area. Due to the possibilities such a facility can provide a local area, I also choose to disregard eastern Norway, and focus more on the districts.



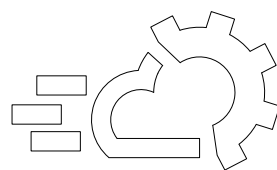
HYDRO POWER Most of Norway's energy production is from hydropower. It is represented in all regions except Svalbard. The most important regions are Sogn og Fjordane, Hordaland and Rogaland.



BIO ENERGY is represented in most regions. There are most companies in Oslo, Buskerud and Møre og Romsdal. But not ideal source of energy for this kind of facility.



SOLAR ENERGY is represented in nine counties. There are most companies in Oslo, Nordland, Akershus and Østfold.

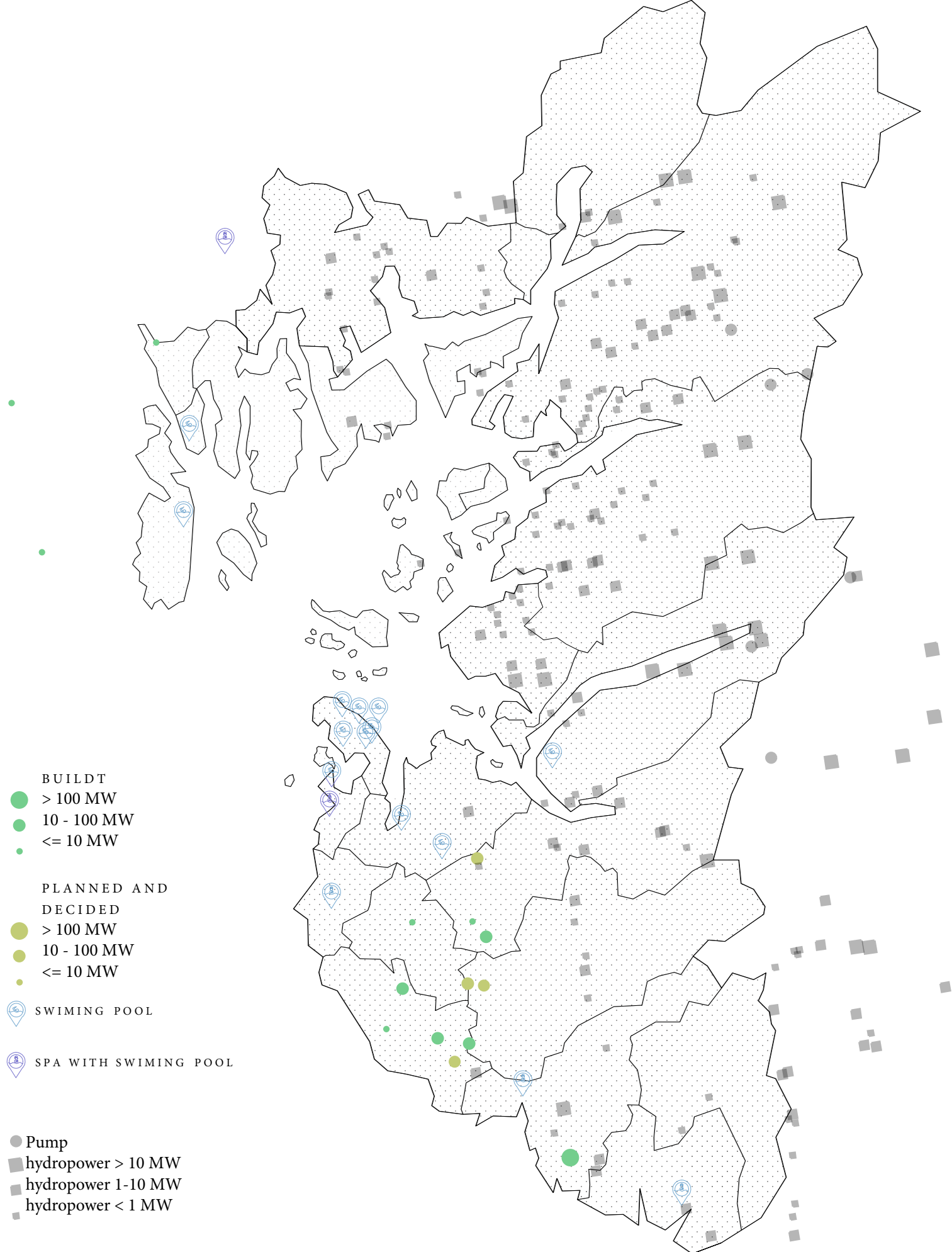


WIND POWER is represented in all counties but strongest in companies in Oslo, Rogaland, Hordaland and Akershus. Ocean power is only in a few.



THE MAP includes cross country and subsea internet cables that connects Norway to the world outside. Closeness to more of these cables means more stable and faster access. A must for a data center.

From analyzing stable internet access, stable and green energy and a lack of good swimming facilities I ended up in Rogaland, or more specifically the island of Karmøy.



Rogaland is a district with some of the fastest internet in Norway. A new subsea cable: North Sea Network strenghtens this region further.

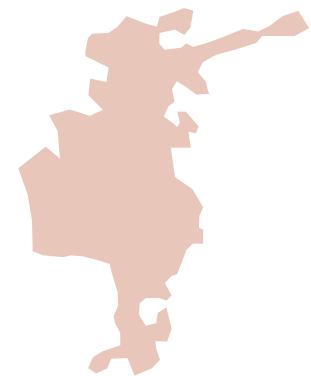
KARMØY MUNICIPALITY

Karmøy is a municipality in Rogaland consisting of several smaller towns where three have official city status. Nearest larger city to Karmøy is Haugesund.

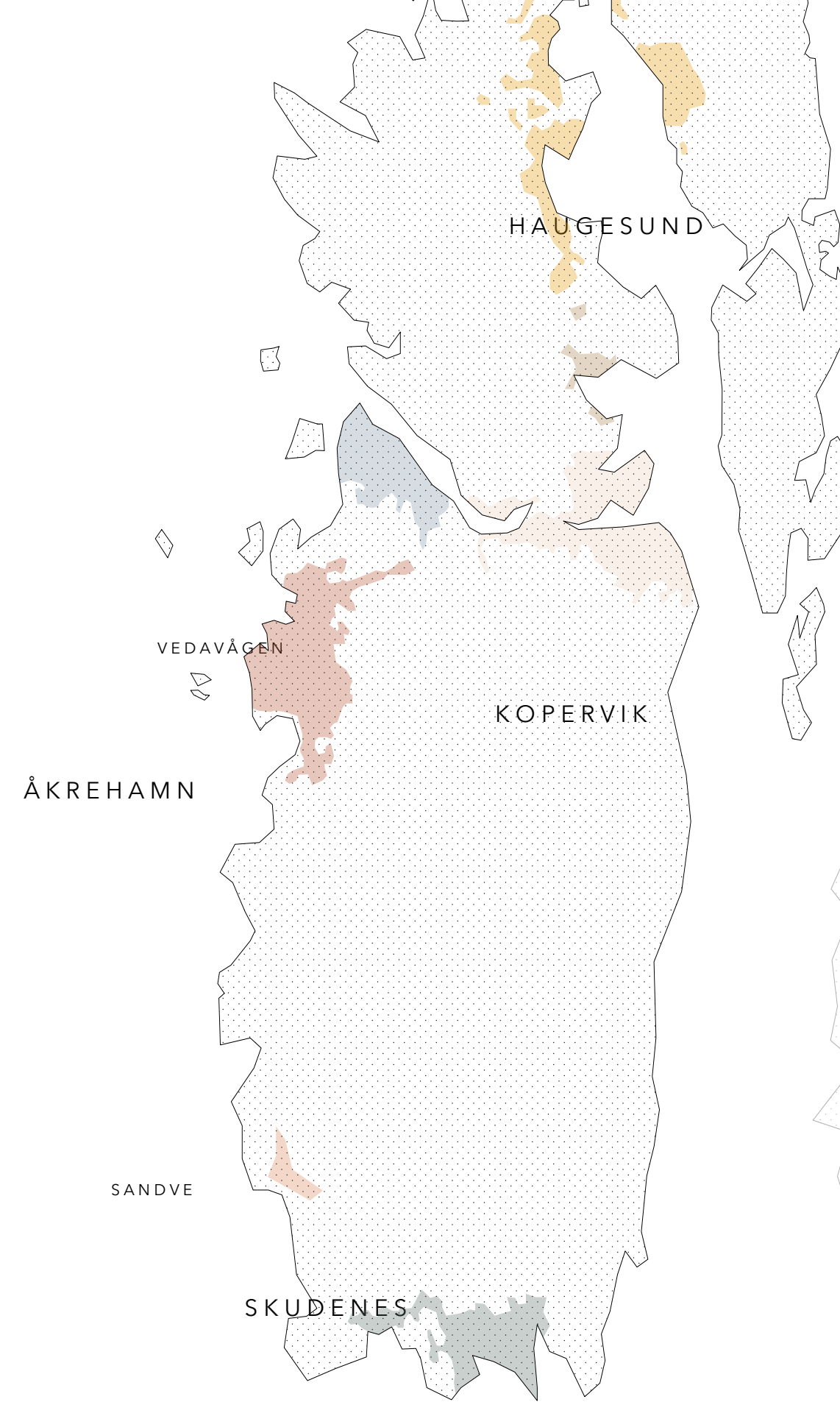


K O P E R V I K : is the administrative center of the municipality, and was chosen for its location in the middle of the island. The population is 11 561 out of the local library, town hall, NAV, cinema, folk high school. At the beginning of the 20th century, the most important industries in the city were the shipping, fishing and canning factories. Today the biggest employer is Norsk Hydros aluminiumplant, Hydro Aluminium Karmøy.

S K U D E N E S: 3 334 people live here, at the southern most tip of Karmøy. Skudeneshavn was built around lobster fishing, herring fishing and the export of herring, which meant that Skudeneshavn grew strongly in the 19th century. Today, the city has a modern shipbuilding industry and one of the country's largest offshore shipping companies



Å K R E H A M N : is the youngest of the three cities, with an explosion in population. Because of its position to the other cities I decided to place my project here.

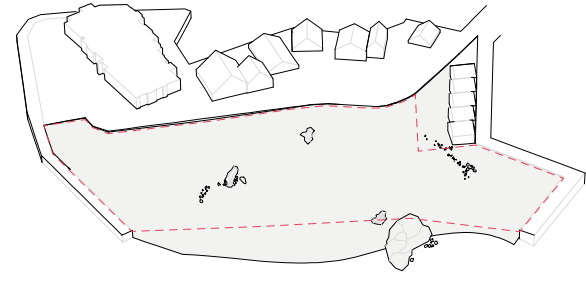




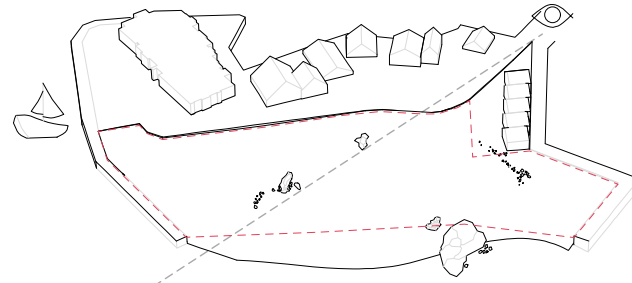
ÅKREHAMN, KARMØY

Åkrehamn is a summer city that when the boat tourists appear changes character. It has a long history connected to the sea and fishing. In the 1960s with the introduction of the car; the city center moved from the harbour to the new main road. But in the summer the harbour fills up: and it becomes a new kind of center for activity and life. Many buisnesses such as restaurants, cafes, shops, are open only in the summer and Saturdays for the rest of the year.

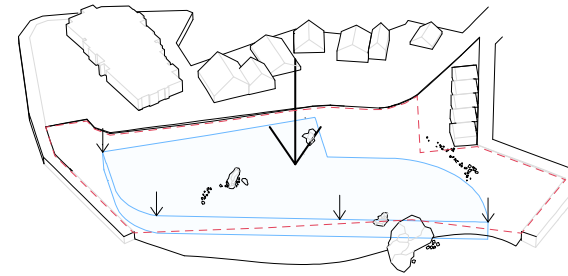
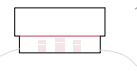




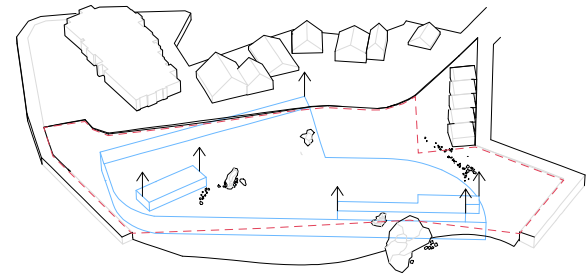
The project aims to bring the islet back to the people to use. Crushed and broken by human forces, nothing of this islet reminds of the archetypical textures and tactility of Karmøy.



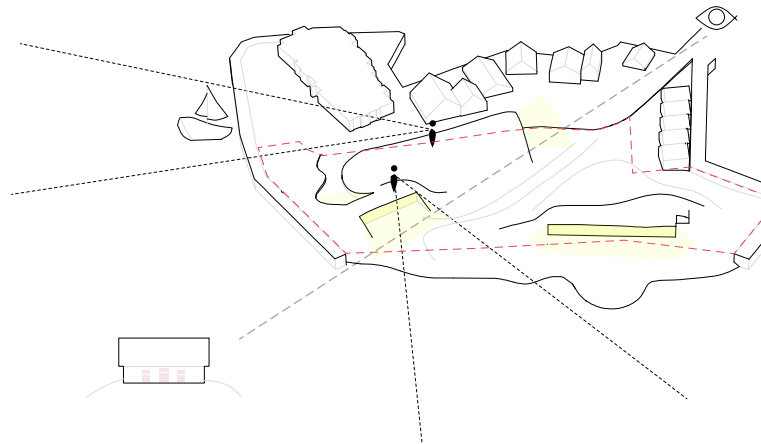
Keeping the sightline to the iconic Mortholmen on the islet across.



In respect to the surroundings and the fact that data centers often buildt in rock, the facility is brought under ground; blending in with the newly created landscape.



Some masses will be on ground level, such as the entrance building that is an extension of the ramp leading to the underground facility.



At last; the landscape forms around the buildings on ground level; making it a green area for the city to take part in and creating a beach and bath house as a free offer; giving back to the community.

In Norway the building of data centers often start a discussion of if these buildings are worthy of the plot they will be built on. I.E. Kolås in Ballangen and topsoil on Jæren. Here I have found a plot that is crushed and in loss of identity and about to be privatized. A plot this urban and in connection to the sea should not be privatized, especially in a place like Åkrehamn where so much along the shoreline is closed off and private.

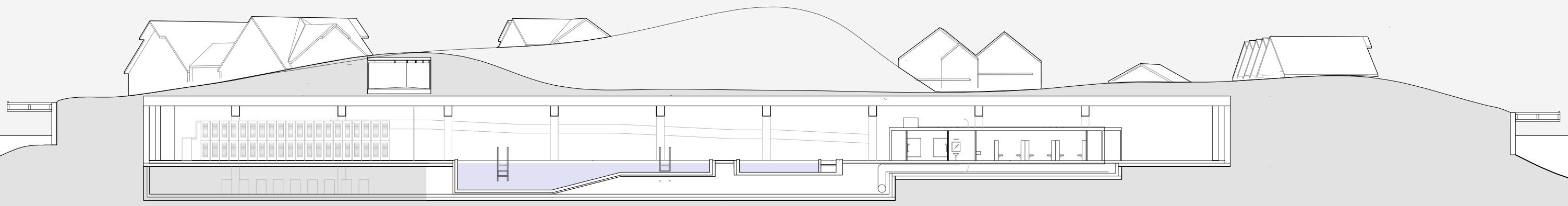
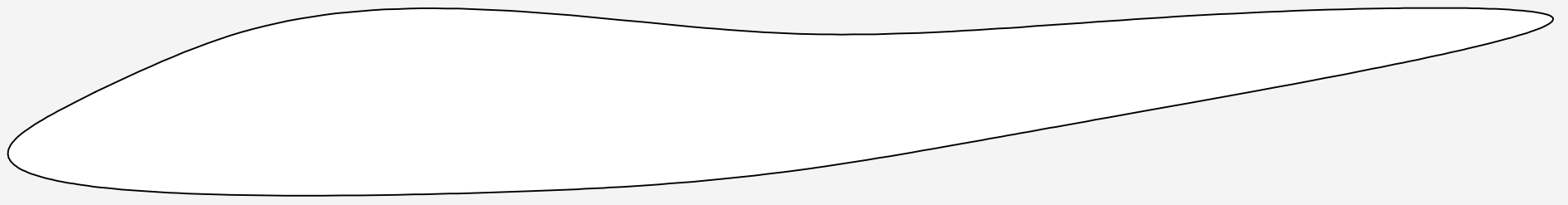
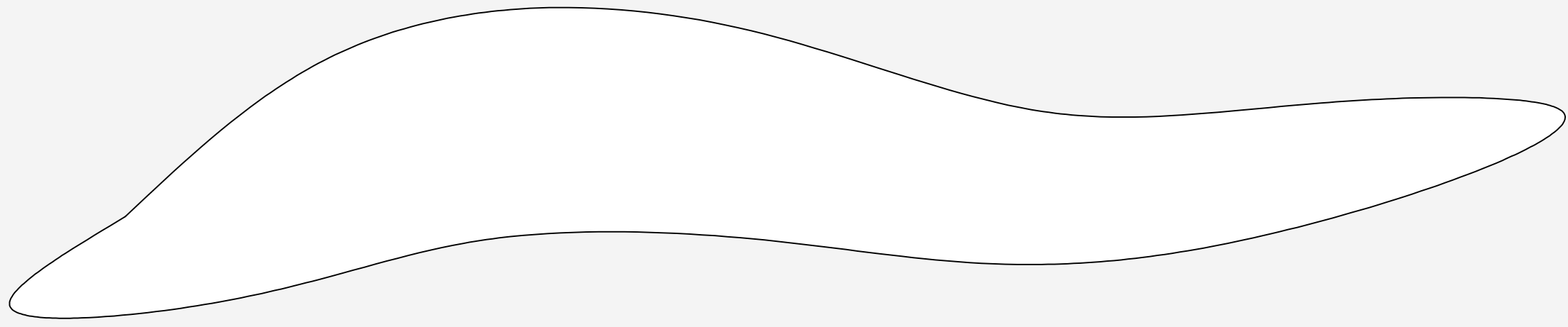


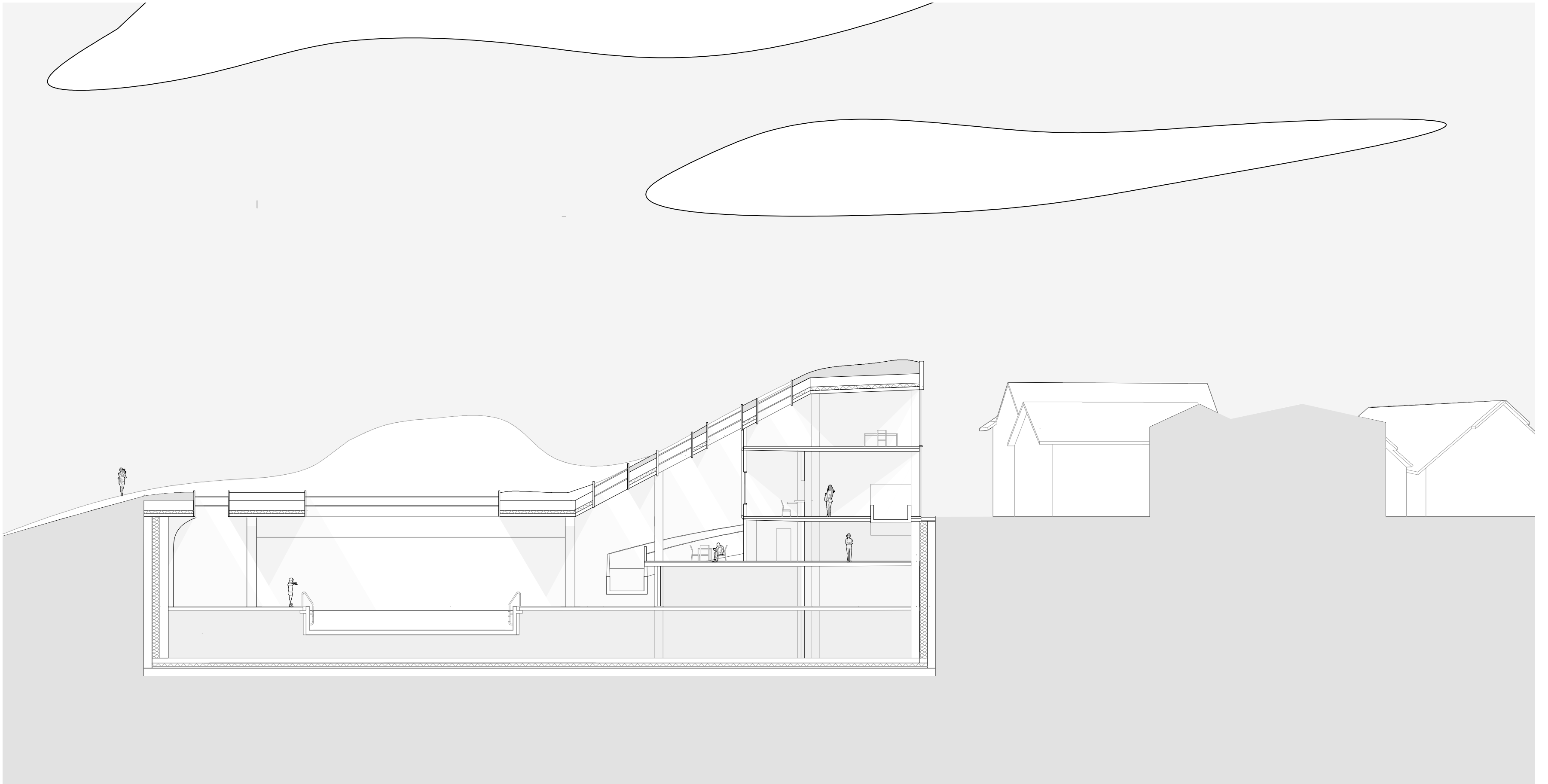


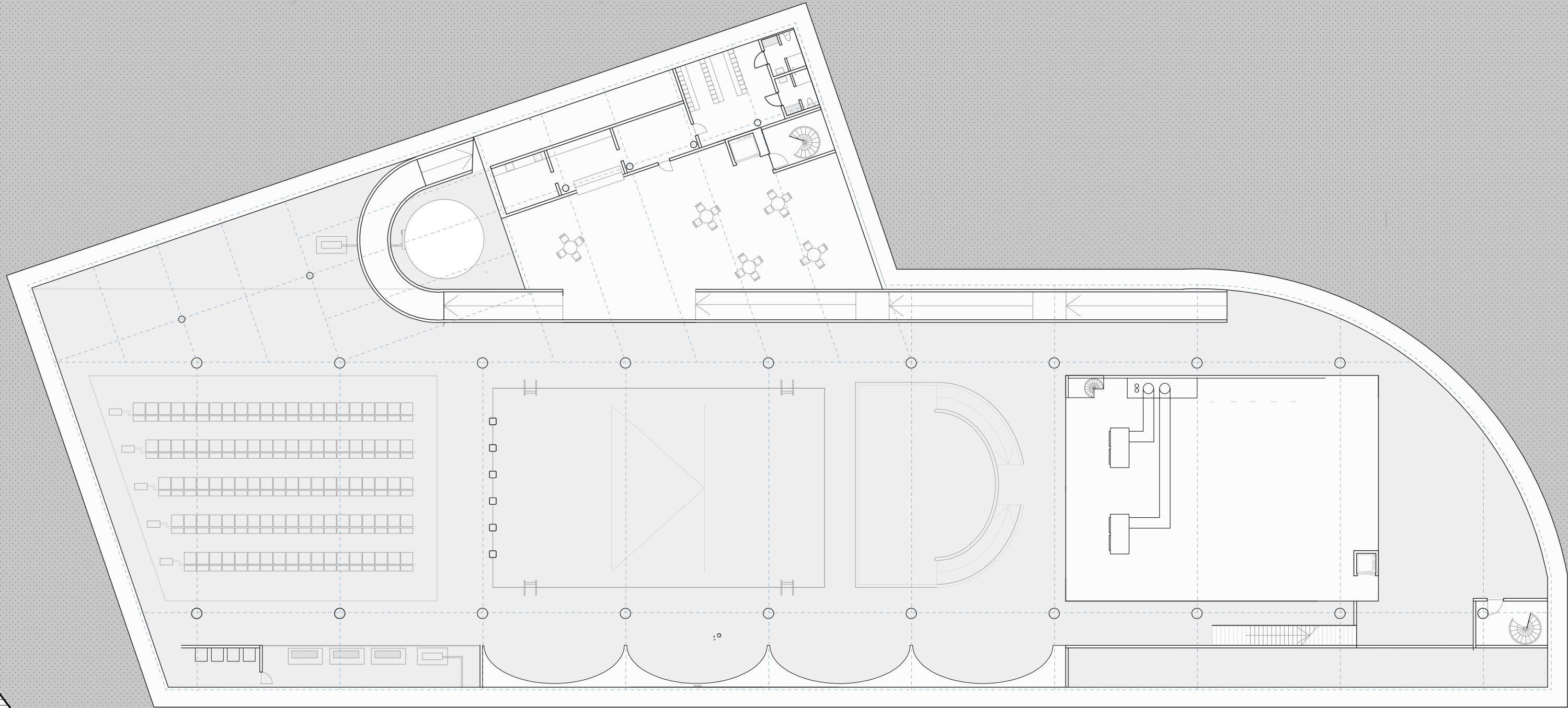
MAP - CURRENT SITUATION

- CONCRETE
- GRAVEL AND STONE
- SAND AND GRAVEL

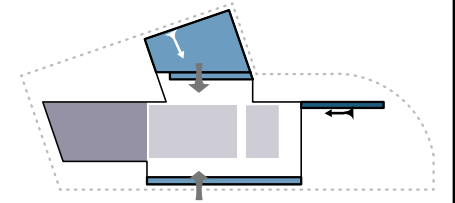


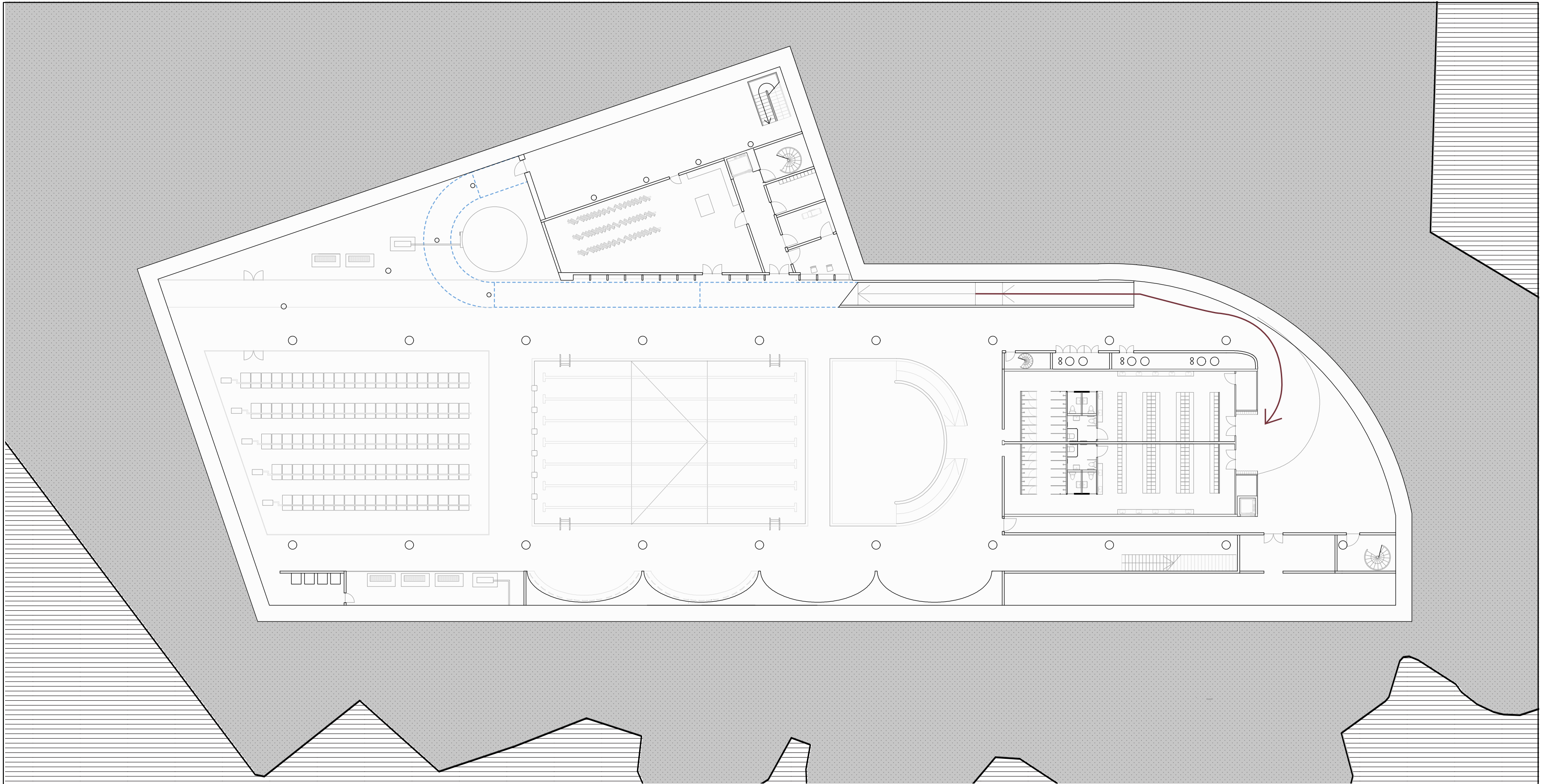






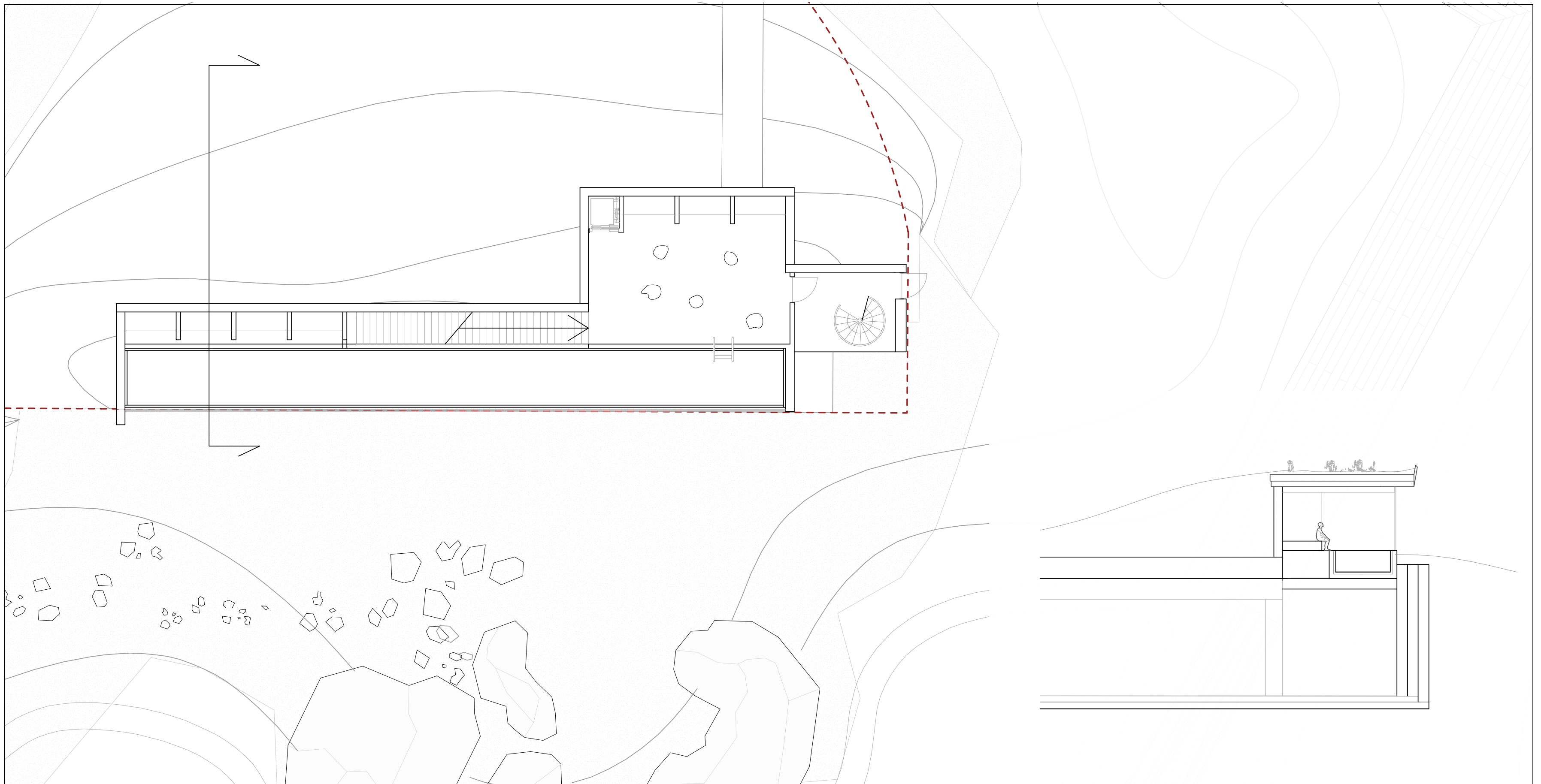
PLAN - FLOOR -1 / CAFE FLOOR





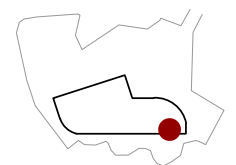
PLAN - FLOOR -2 / POOL AND SERVER FLOOR

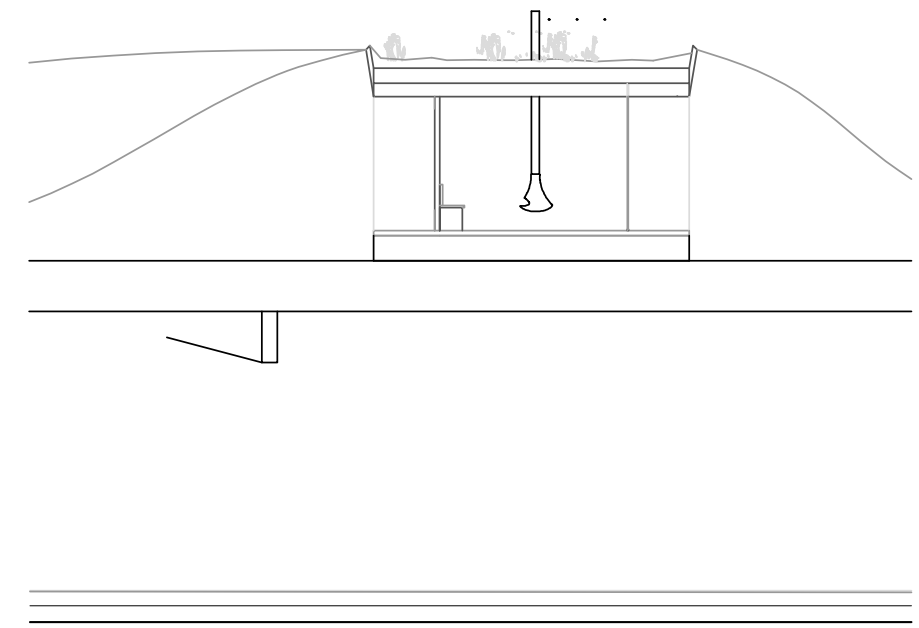
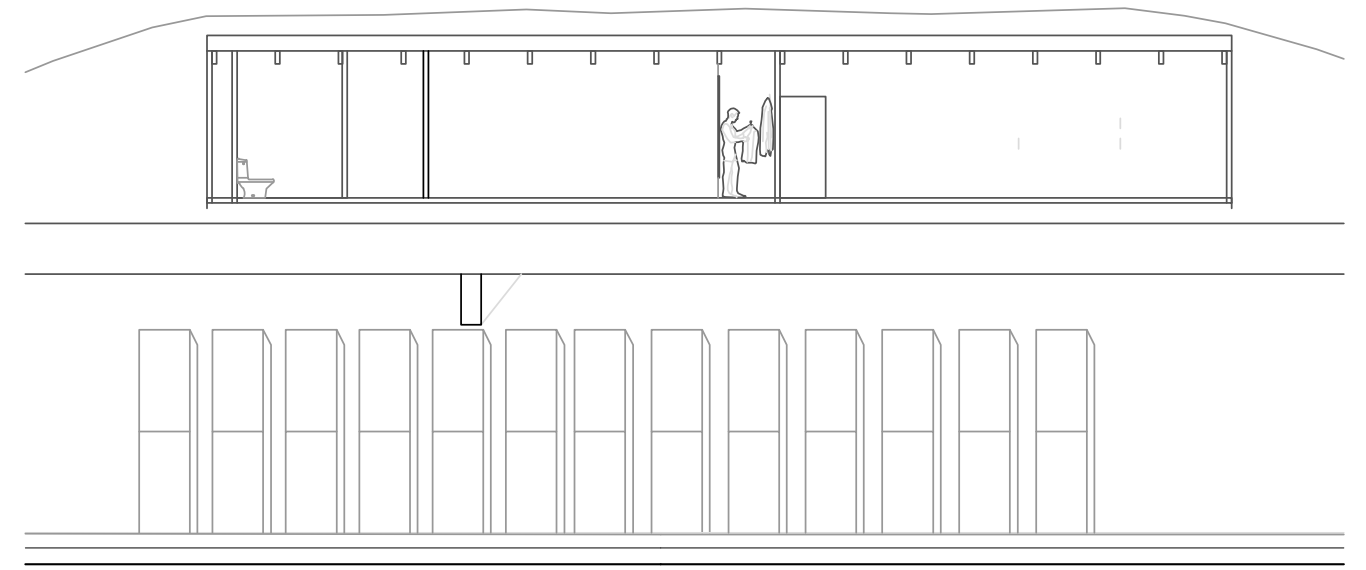
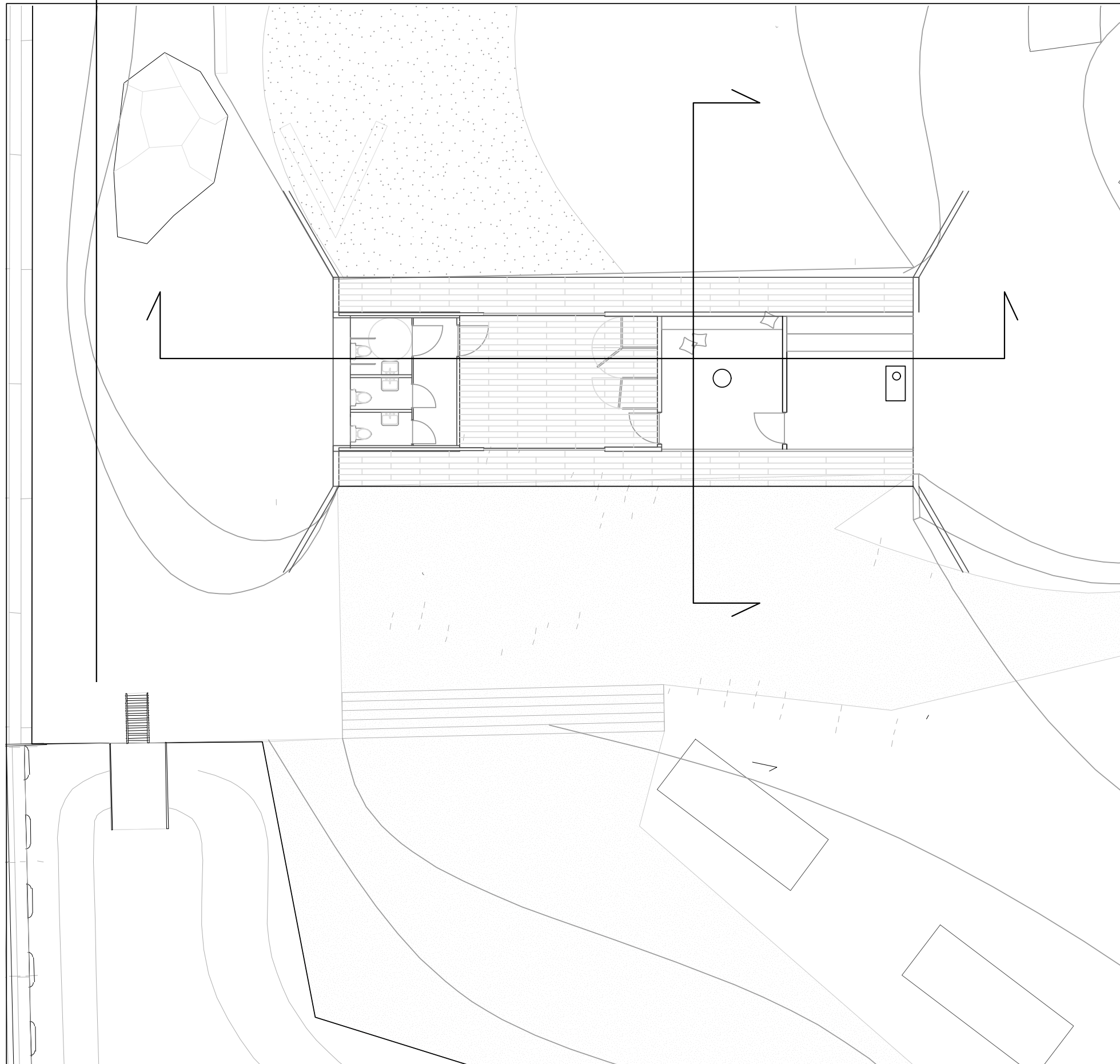




QUIET BATH

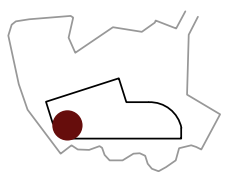
For contemplation. This pool was designed for the adult demographic who would love to be at peace from loud play and sports in the bath. This pool is located on the ground floor with a focus on light, views and horizon.





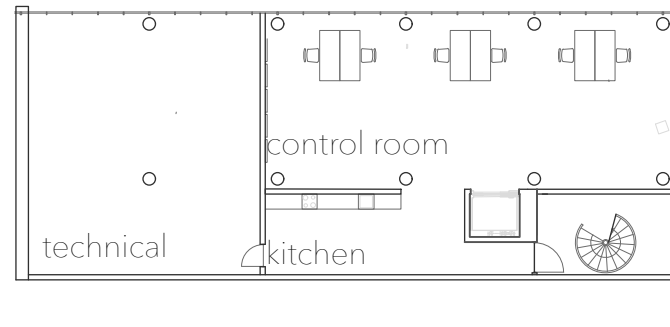
BATH HOUSE

The bath house and diving tower was requested by the locals in Åkrehamn. It is part of the project that gives back to the city. It has toilets, changing rooms and a warm room and sauna.



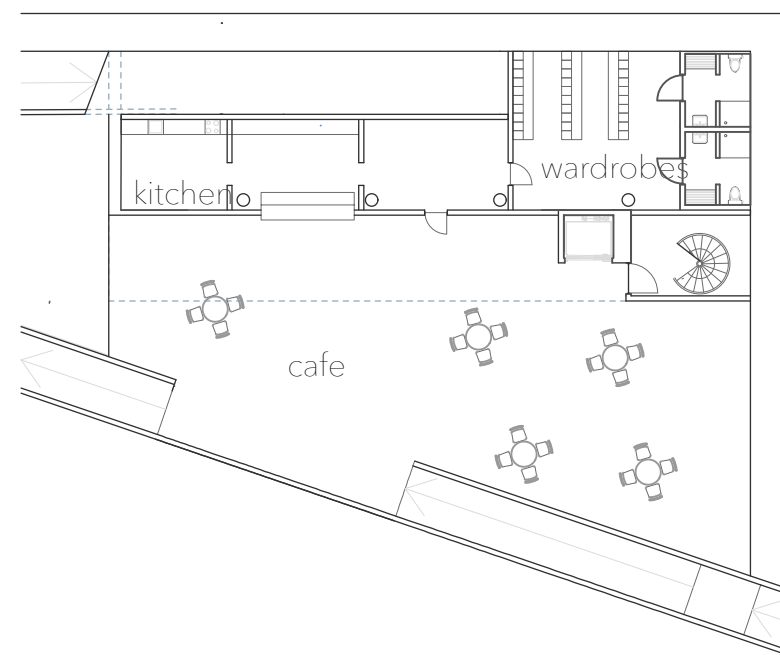
FIRST FLOOR

Office for the IT workers. Also a technical space for ventilation.



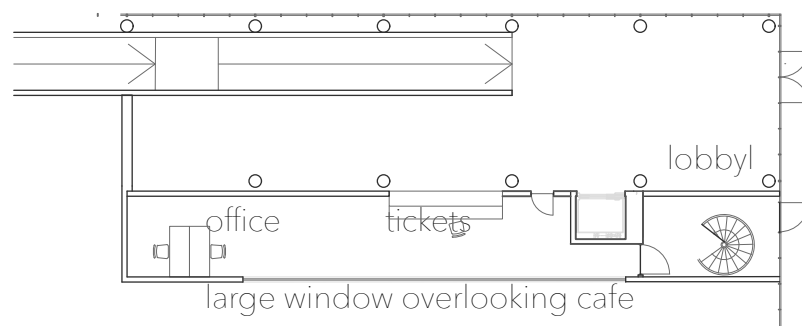
FLOOR - 1

Cafe and employee wardrobes.



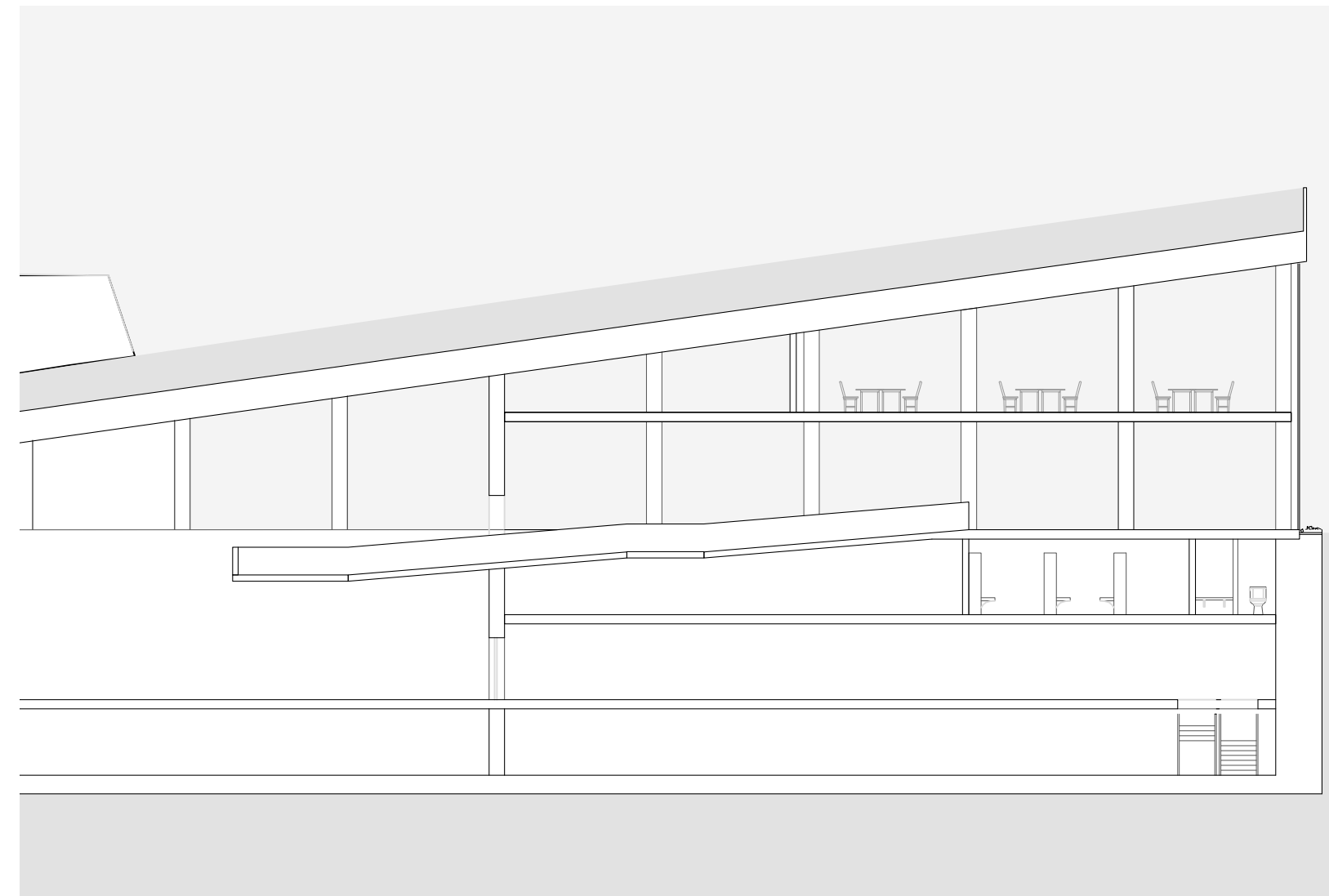
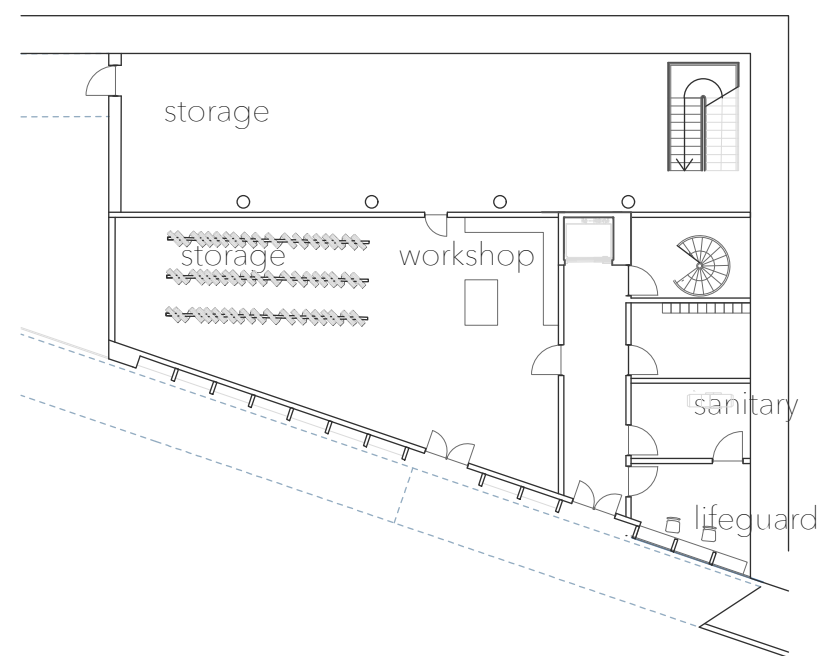
GROUND FLOOR

Lobby and tickets for the pools.



FLOOR - 2

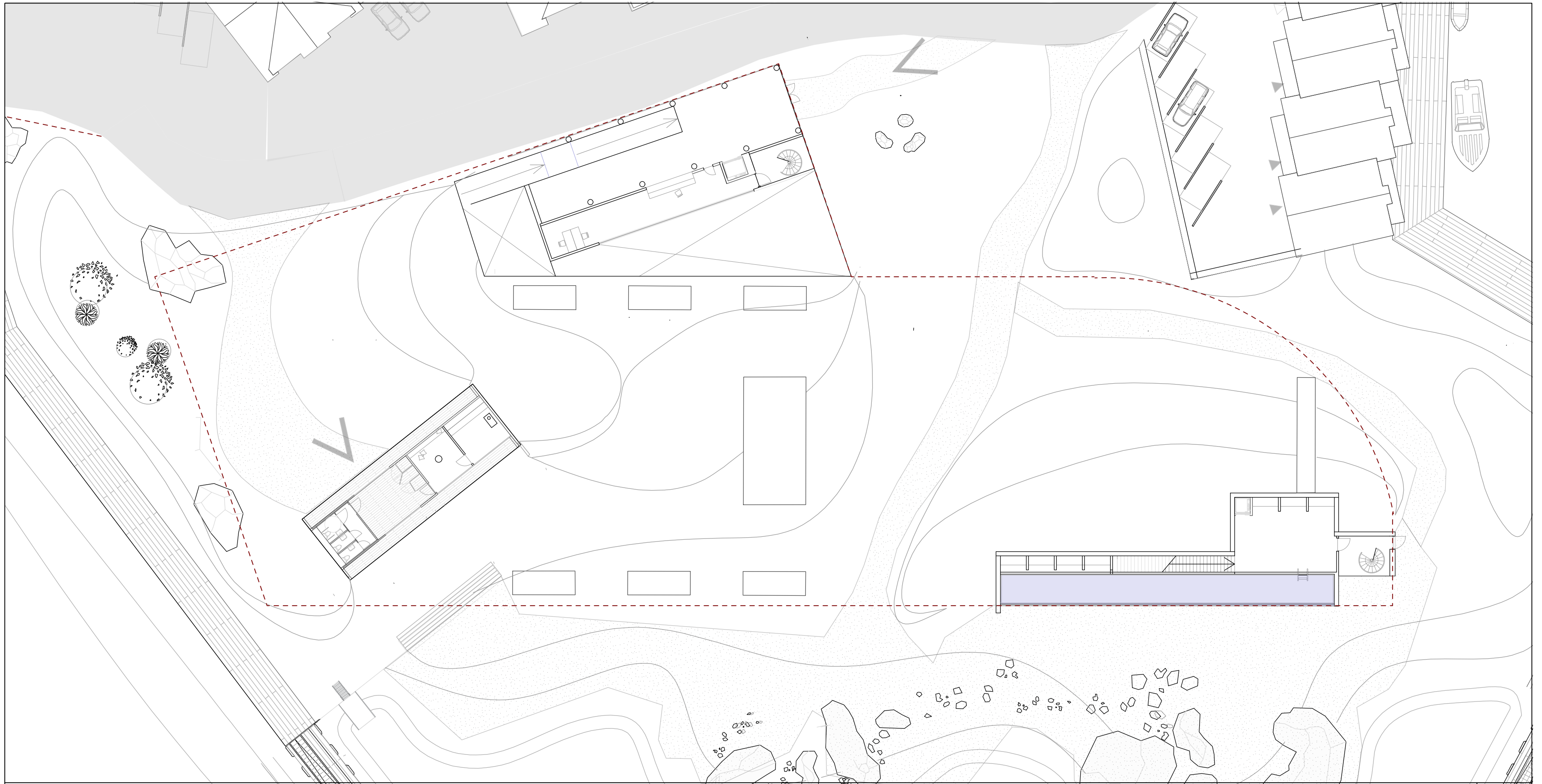
Storage, workshop, lifeguard room and sanitary.



ENTRANCE BUILDING

Also consists of offices and storage for the pool.





MAP - GROUND FLOOR





