

PROCESS

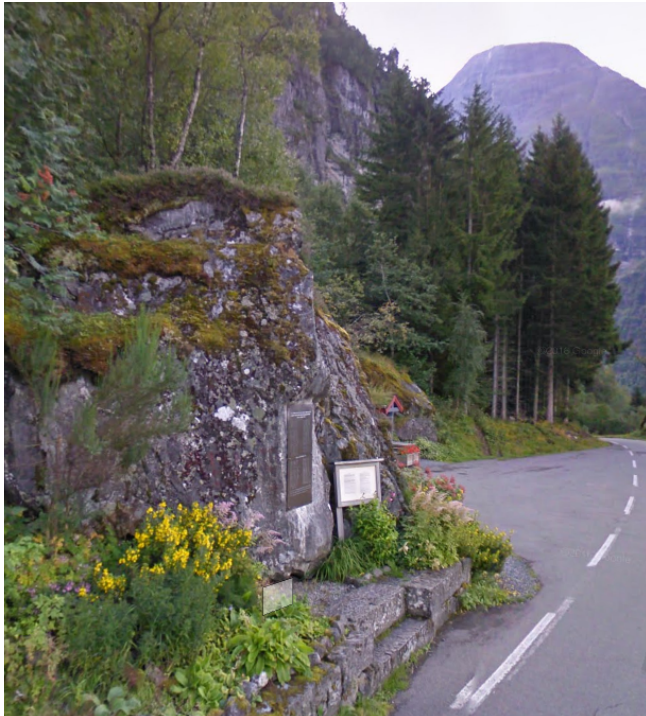
TABLE OF CONTENT

RESEARCH	01 - 21
SKISSER	21 - 49

RESEARCH

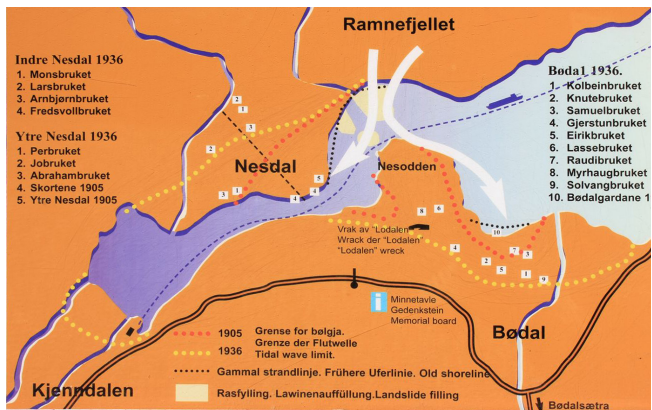


Existing site conditions

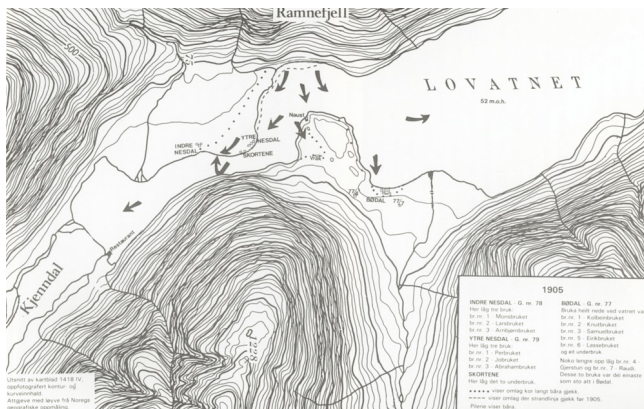


Nameplate Memorial

There is an existing nameplate memorial on the site. The nameplate is unfortunately located in a dangerous location on the edge of the road. The road is curving at this point, making it hard to spot a visitor. My advice is to move the nameplate, or make a new monument on the previous monument site of nesodden.



Wave map



Wave map

In 1905 the surviving population of Loen raised a memorial monument for the ones who were lost after the first accident. The monument was washed away as a result of the second wave (in 1936). After 1936 there has been a less permanent wooden cross on the site. As a part of my diploma, I have redesigned a more permanent place of remembrance which brings awareness to the names and where the lost ones came from.



Minnesmerke 1905



Lodalen 1936



Lodalen 1905

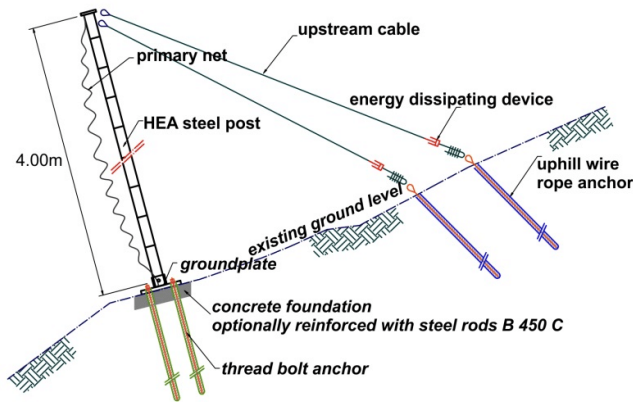
The first stop, and place of intervention is the boat-wreck of Lodalen which was thrown five hundred meters from the water and now lies in the middle of the forest. There has been an ongoing discussion for a long time in the local community of making a sheltering structure around the boat to prevent it from weathering.

«Eg har aldri sett leirskulelevor meir interessert enn når dei har fått servert historia til rutebåten på Lovatnet, og kan studere restane av det som er igjen. Lodalen er unik med den storslåtte naturen og den dramatiske historia»

Forventing: At fagfolk må vurdere kva som er det beste for å ta vare på båtvraket, at lokalbefolkning og reiselivet bør engasjere seg i større grad, og at kommunen må inn som forvaltingsmynde og finansiell aktør.



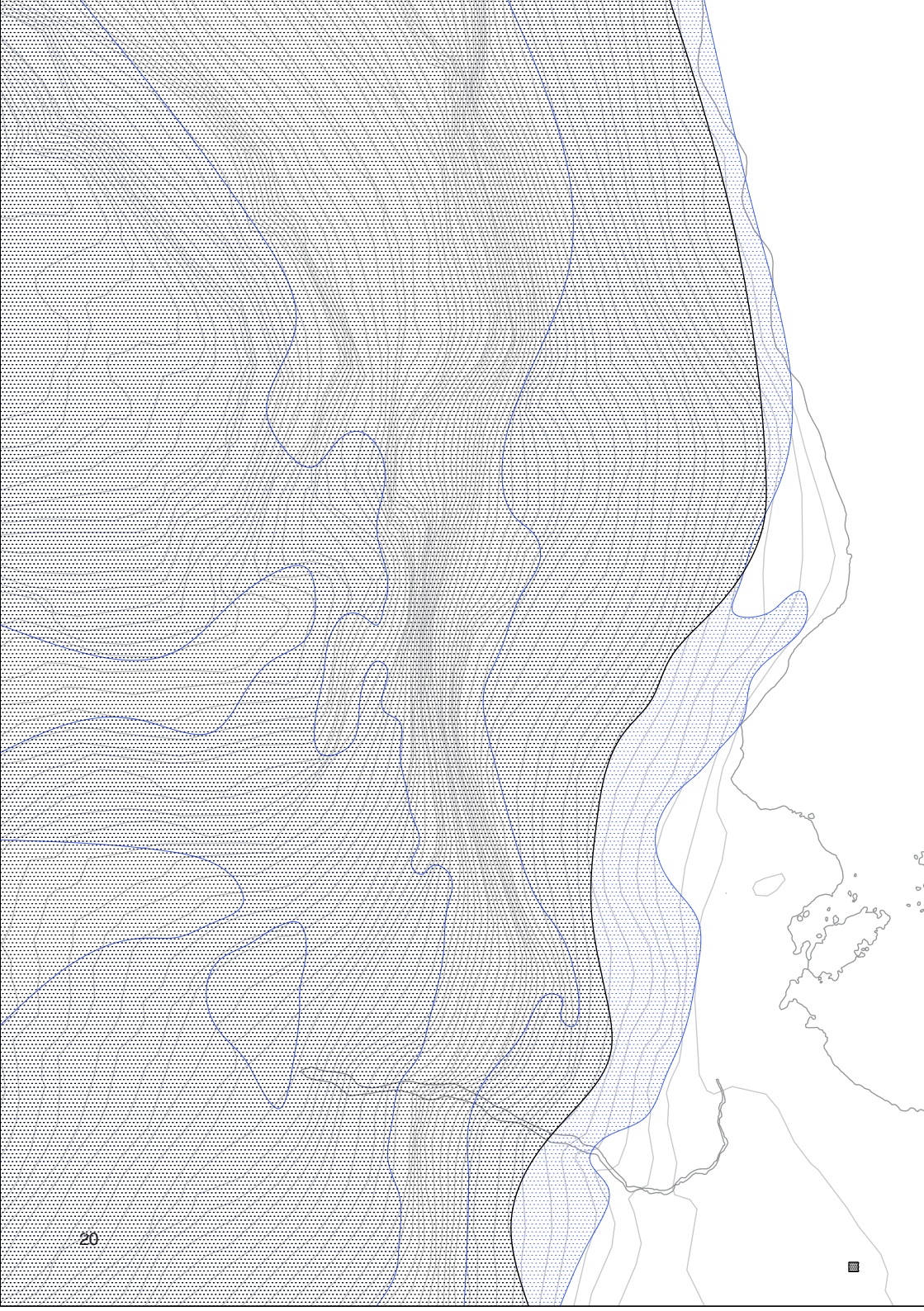
Foto: Odd Røningen

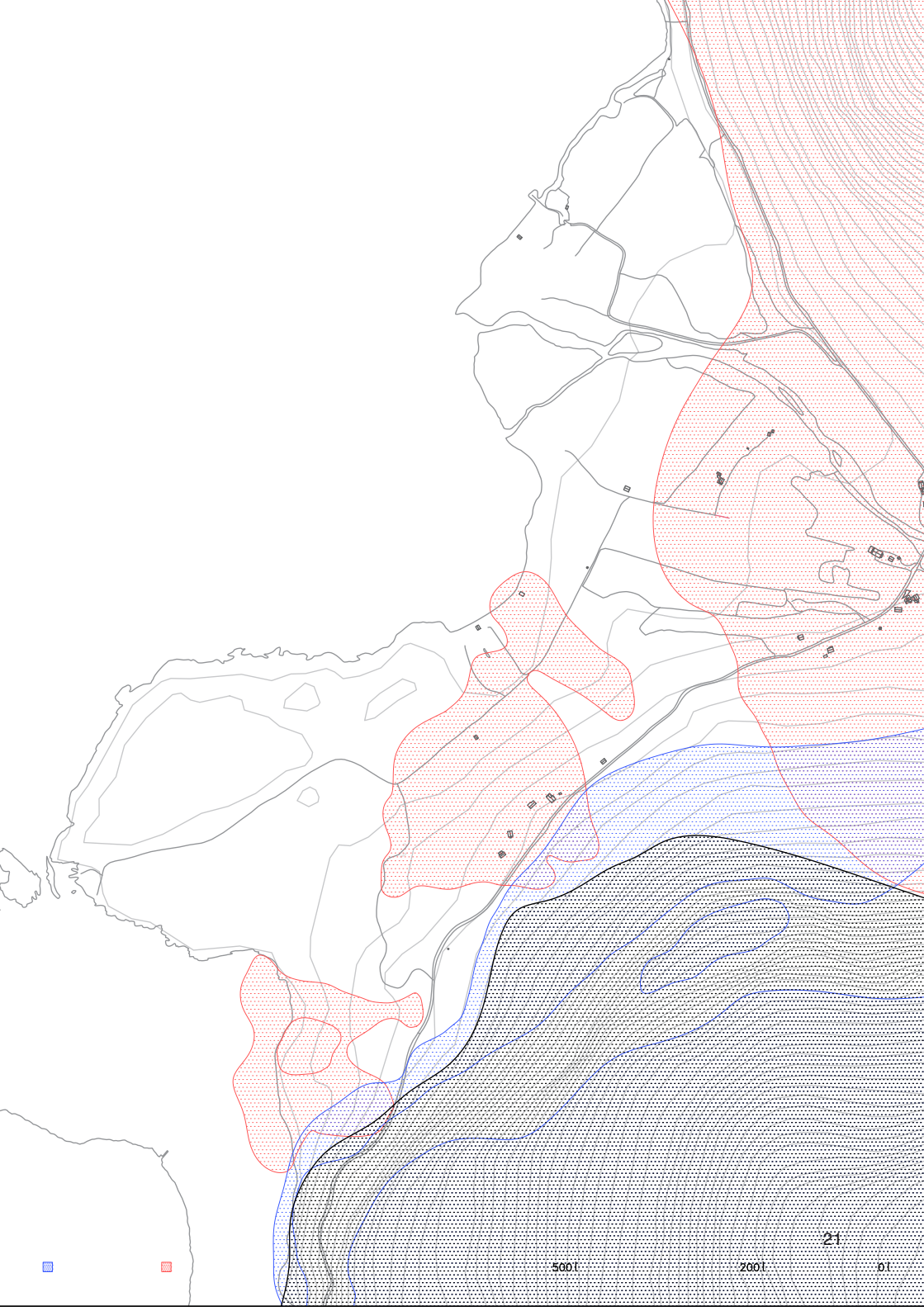


Safety net reference.



Safety net referance.

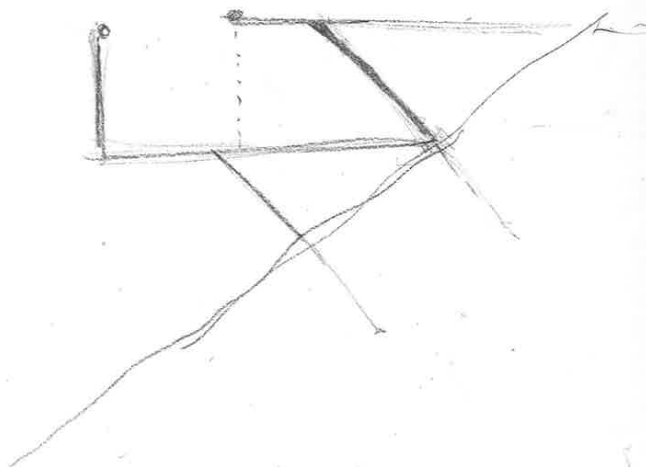




SKISSER

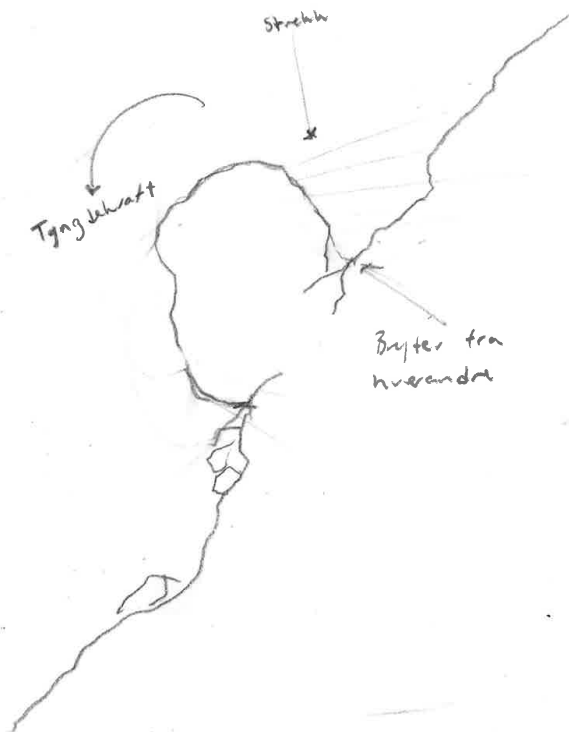
Drawing of Ramnefjellet overlooking Nesoden.

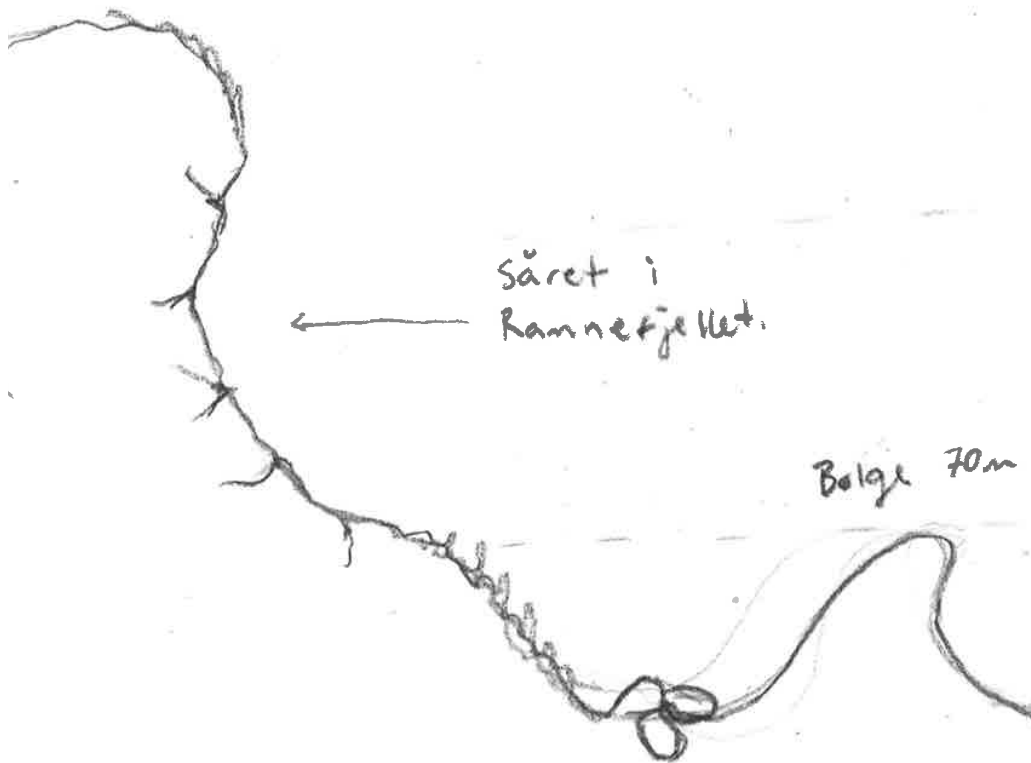




Sketch showing relationship to the mountain

Forces of Rockfall





Såret i
Ramnefjellet.

Bølge 70m

Historie.

Geologi

Fjellvegg

Minnesmerke.

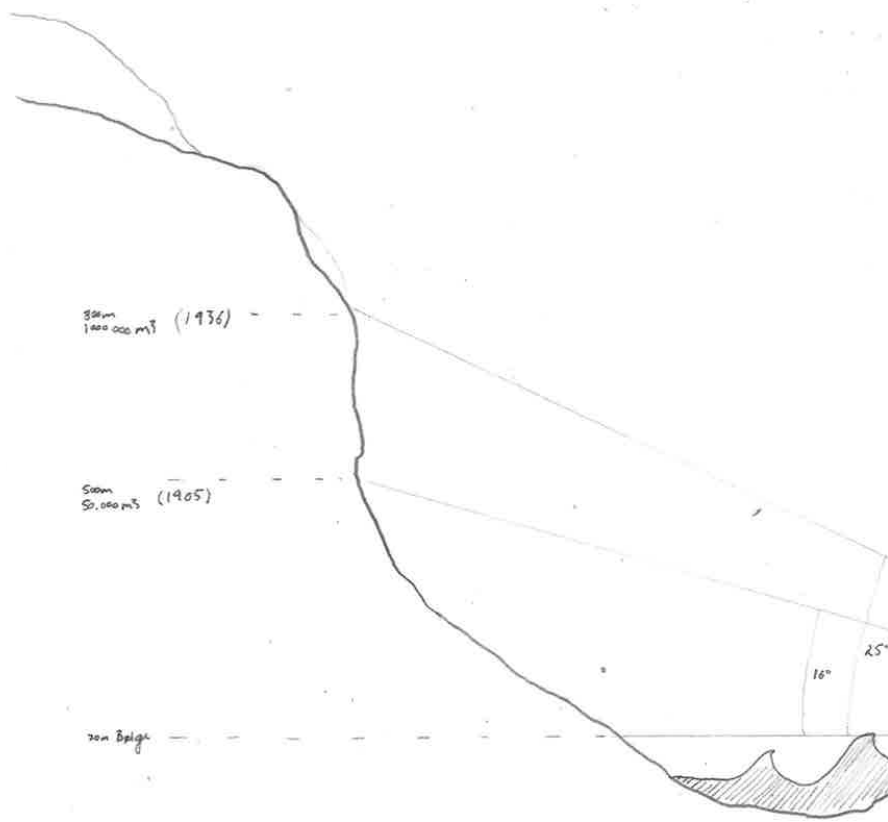
Båtunnel

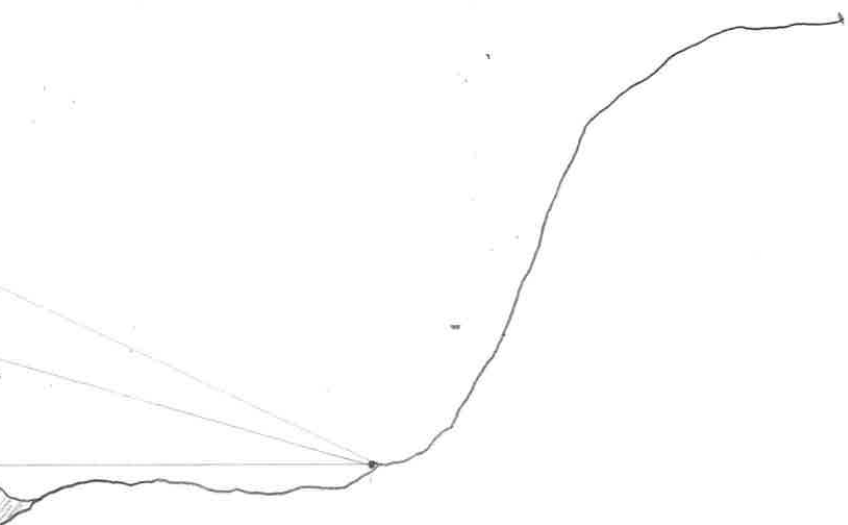


Rasmasser



Understanding the relationship between Nesdal and Bødal



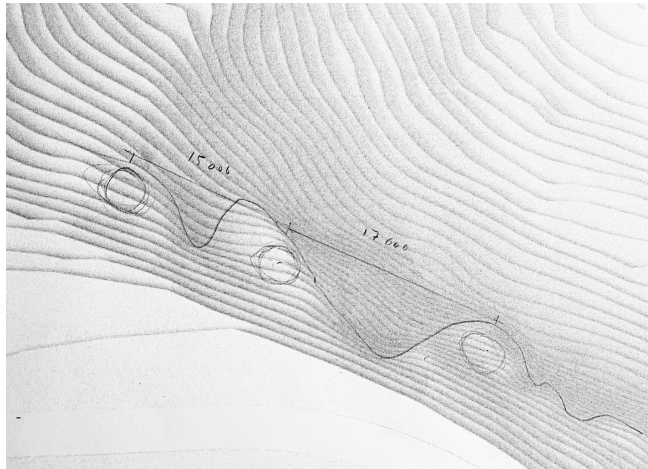


5001

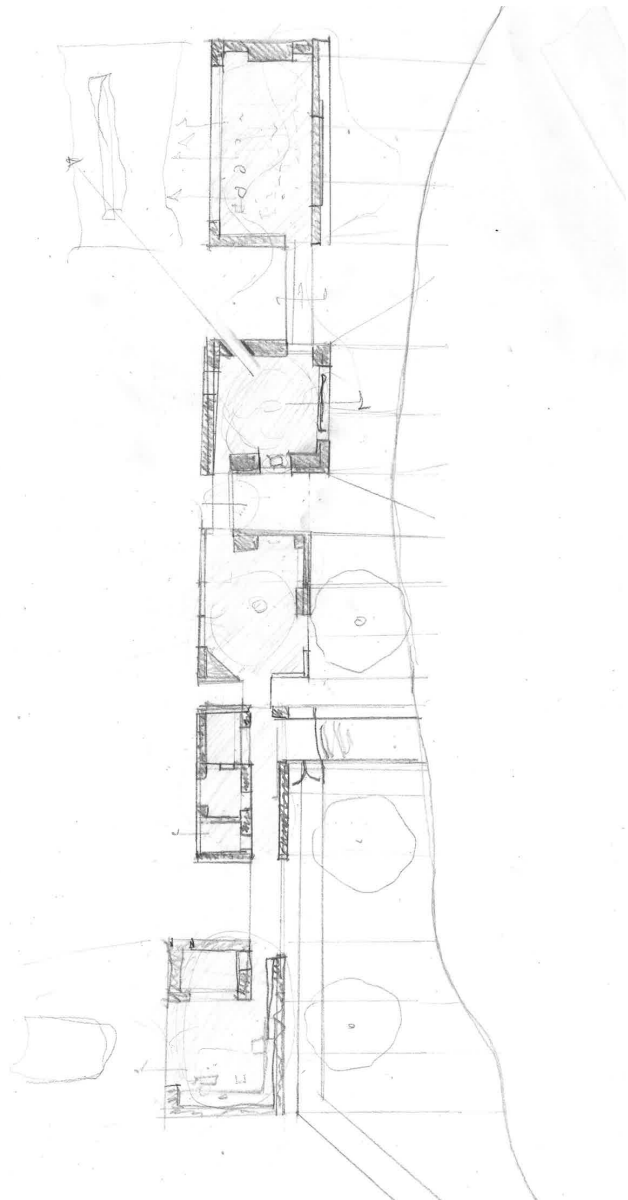
2001

01

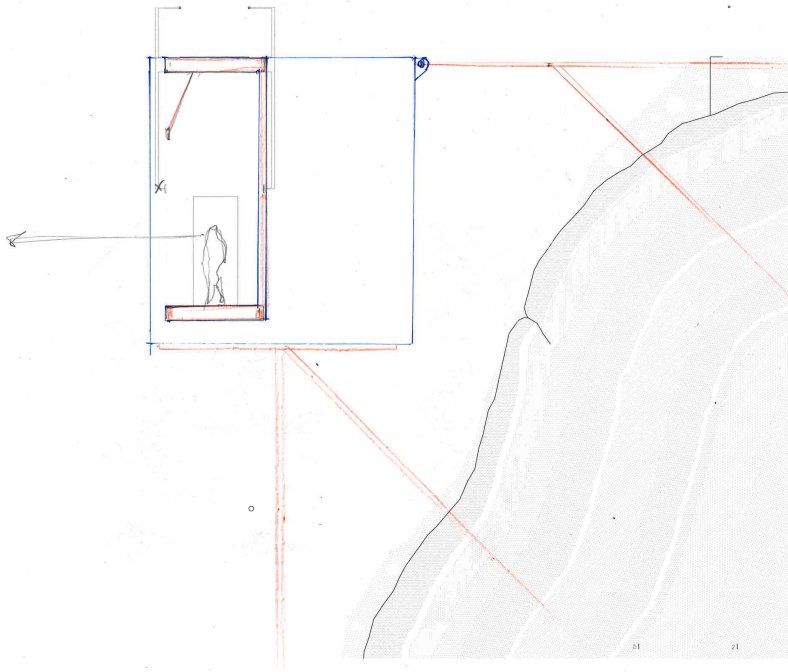
Sketch of landscape profile



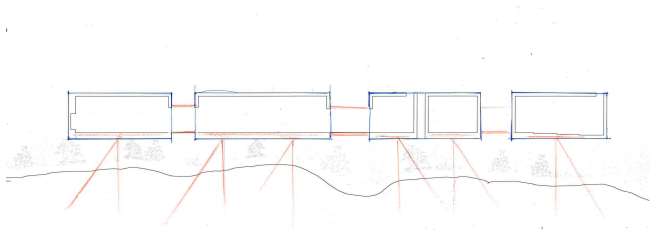
Early plan sketch developing a building consisting of separated volumes



Skech early concept, understanding forces

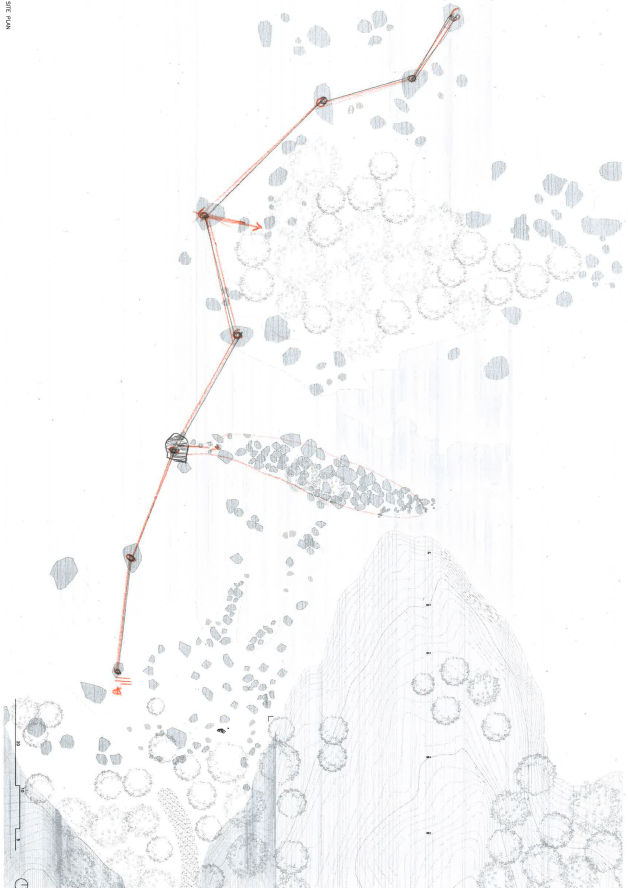


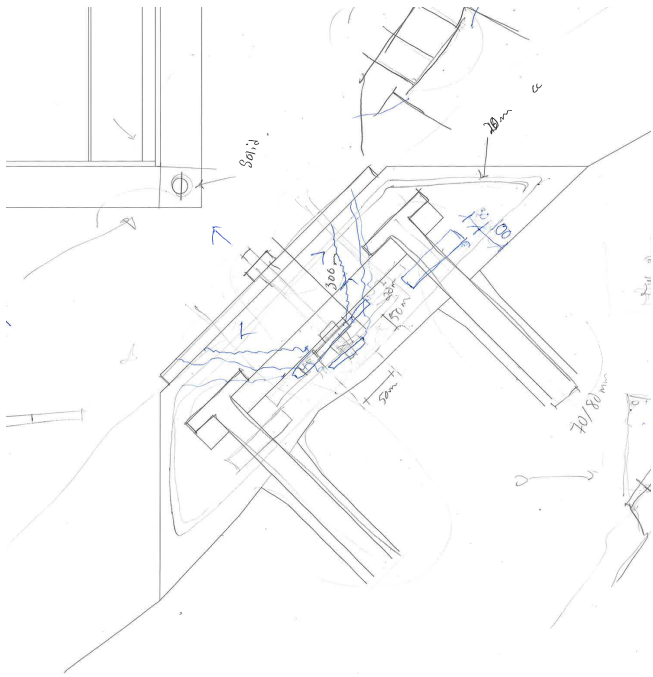
Long section, sketch forces



Mapping possible stones for foundation

WPS 315





Sketch foundation

Free body diagram

