

A home for elderly

Diploma project : spring 2021

Fabian Granhaugen

Introduction

Norway will in a short time face a challenge as the population will develop from 2018 to 2040 and will be dominated by people who are 80 years or older. Today, this group of age represents 4.2 percent of the population. In 2040, this group of age will represent as much 8 percent of the population in Norway (Helsedirektoratet 2018).

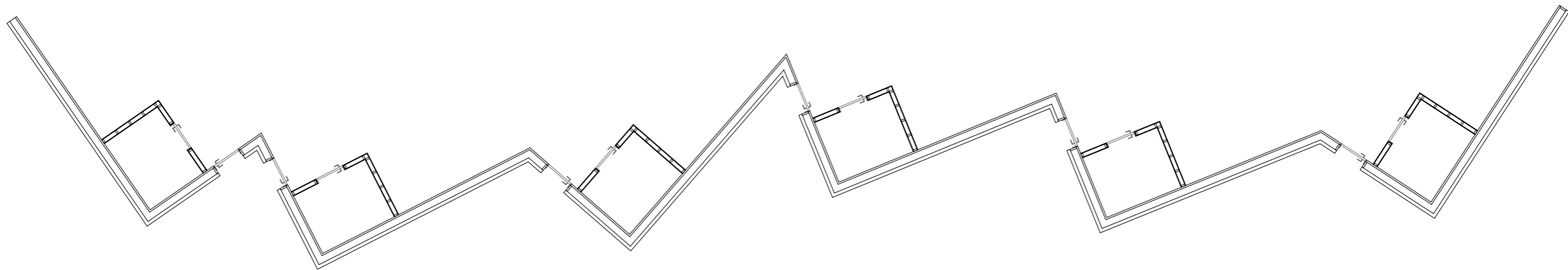
Based on this development, it is expected that there will be more elderly people than children by the year 2040. As a society, we must prepare for this development and build more nursing homes. According to how today's nursing homes are built, there is little variation in architectural solutions. Nursing homes as a typology are characterized by repetitive organization with patient rooms, long corridors and few spatial qualities. In continuation of this, I have chosen to develop an alternative architectural solution where I challenge the current conventions.

Program

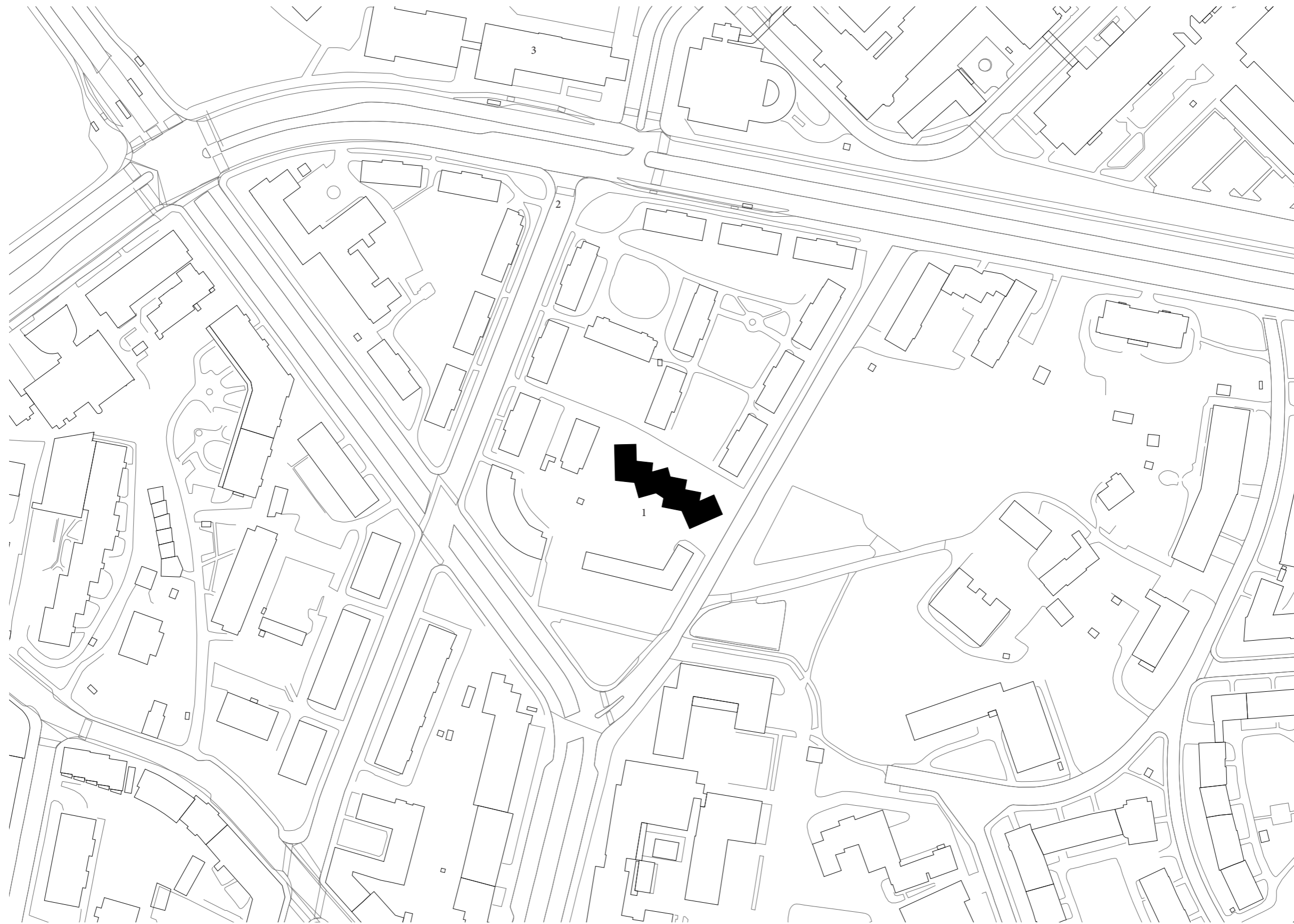
Entrance :		Toilet	18 m2
reception	21 m2		
Access room	53 m2	Patients X 12 :	
Visitor room	56 m2	Patientroom	204 m2
shared room	155 m2	Wardrobe 4,25	51 m2
		Toilet 4,5	54 m2
Treatment :		Shed	70 m2
Medicine room	21,25 m2	Patient + Employees	
Doctor room	21,25 m2	Living room	262 m2
Physiotherapist room	21,25 m2	Kitchen	28 m2
Employees 8 :		Dining room	118 m2
Staff office	21,25 m2	Activity room	154 m2
Meeting room	25,75 m2	Sirculation :	
Break room / Kitchen	17 m2	Staircase	43,2 m2
Laundry room	4,5 m2	Elevator	27 m2
Wardrobe	4,25 m2	Parking garage :	114 m2



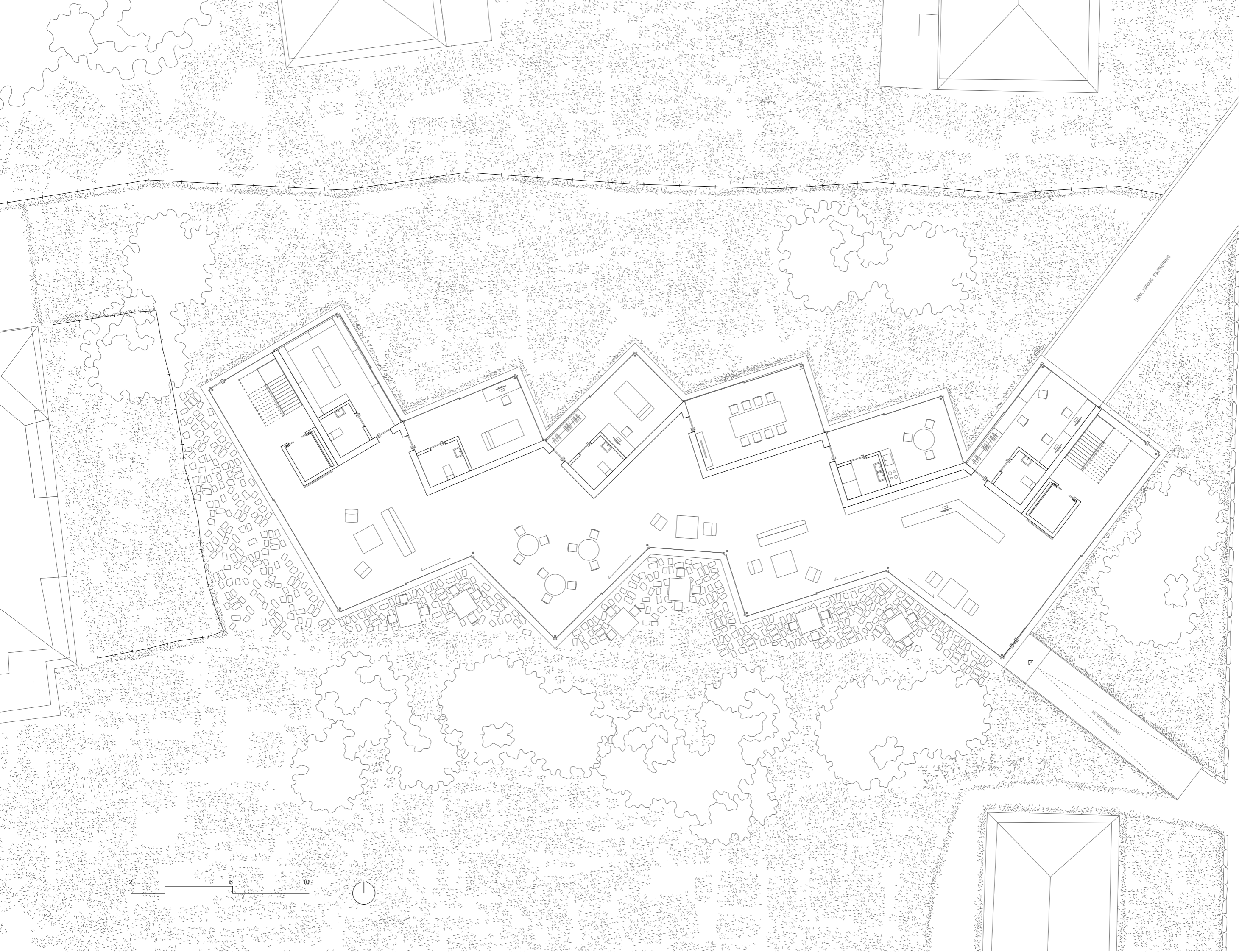
Early sketch of architectural idea / showing
the potential of irregularity.



Conceptual drawing showing the idea of a continuous wall



- 1. Location : The home for elderly
- 2. Access site
- 3. Ullevål Sykehus



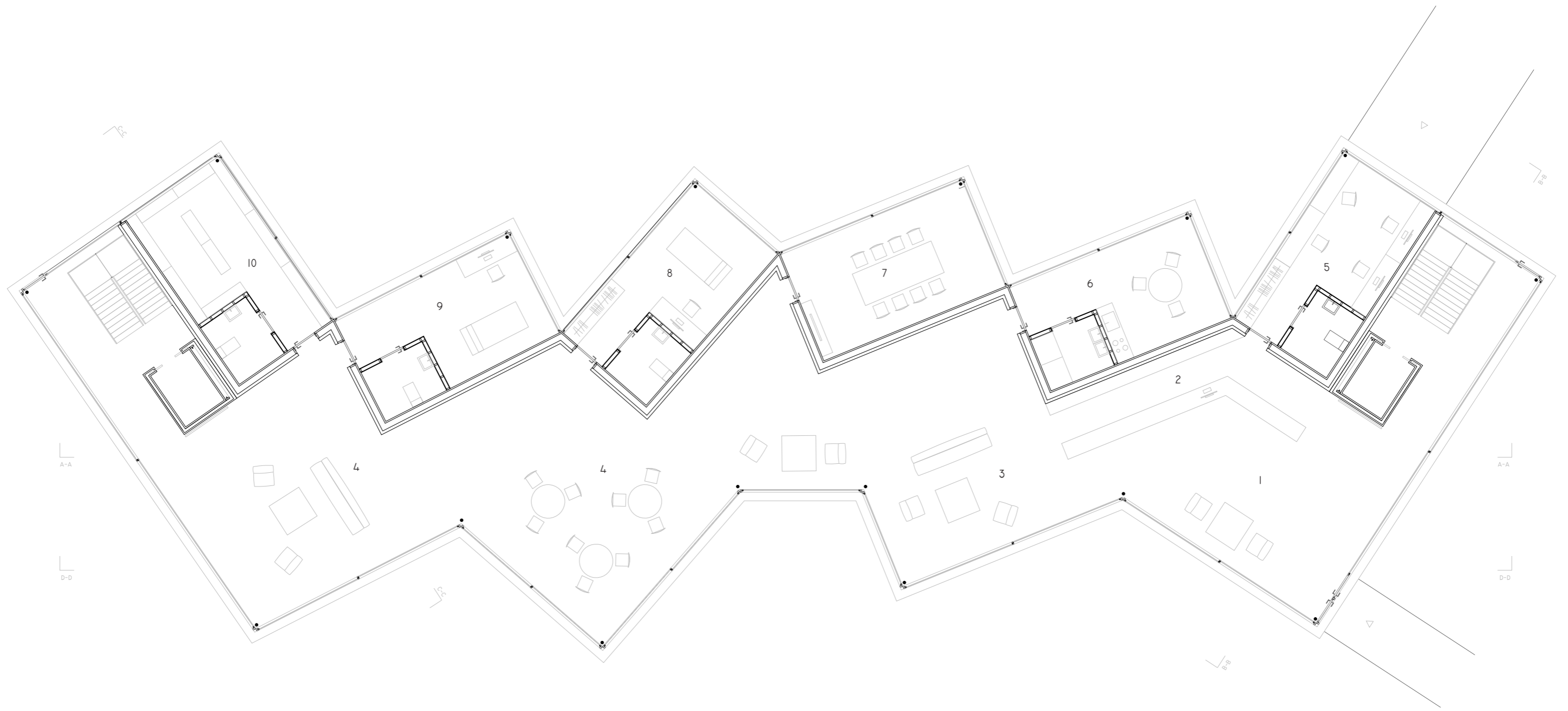
2 6 10



INNVORING PARERING

HOVEDINGANG

THULSTRUPGATE



PLAN I.100 GROUND FLOOR



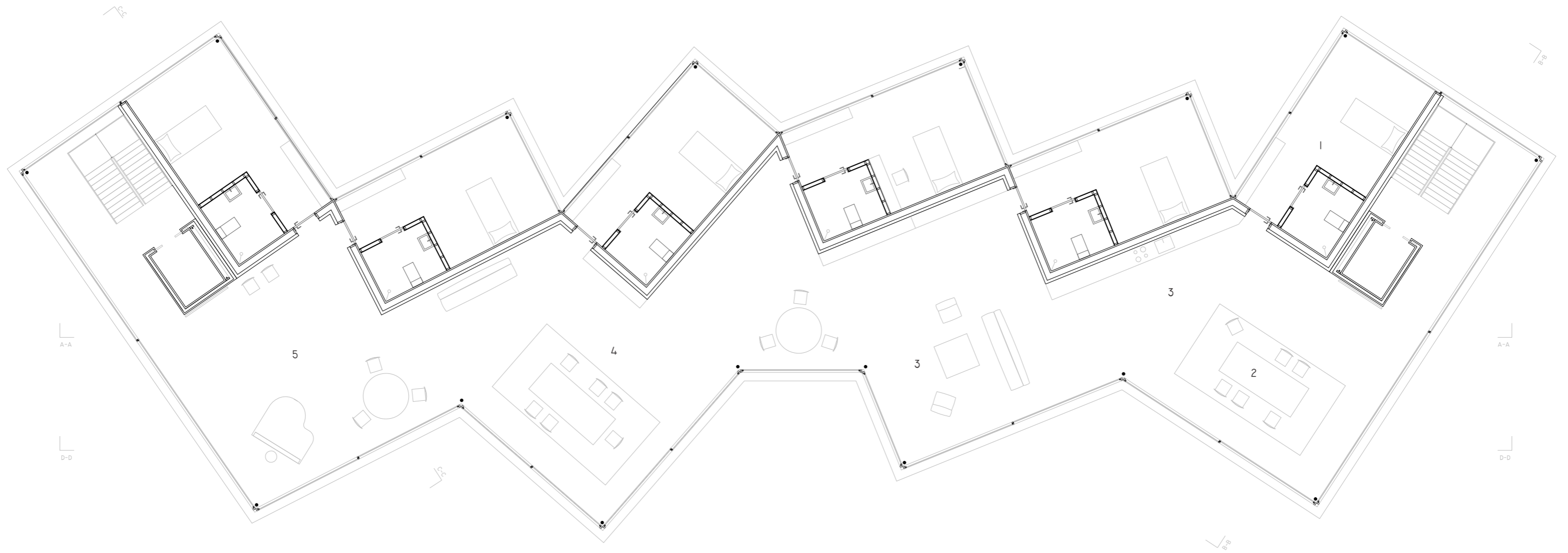
1. Access room
2. Reception

3. Visitor room
4. Shared space

5. Staff office
6. Staff room / Laundry

7. Meeting room
8. Doctor room

9. Physiotherapist room
10. Medicine room



PLAN I.100 1-2 ST. FLOOR

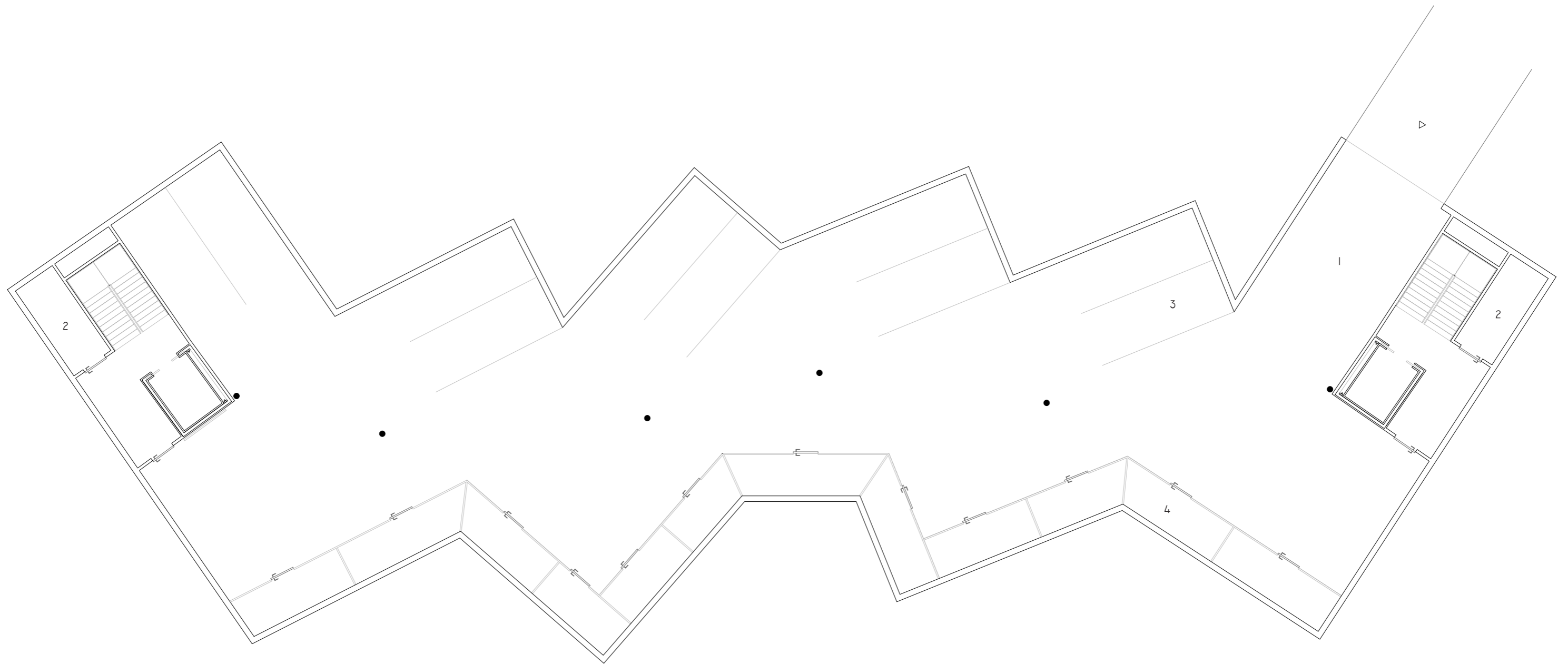


1. Patient room
2. Dining room

3. Living room
4. Dining room

5. Activity room

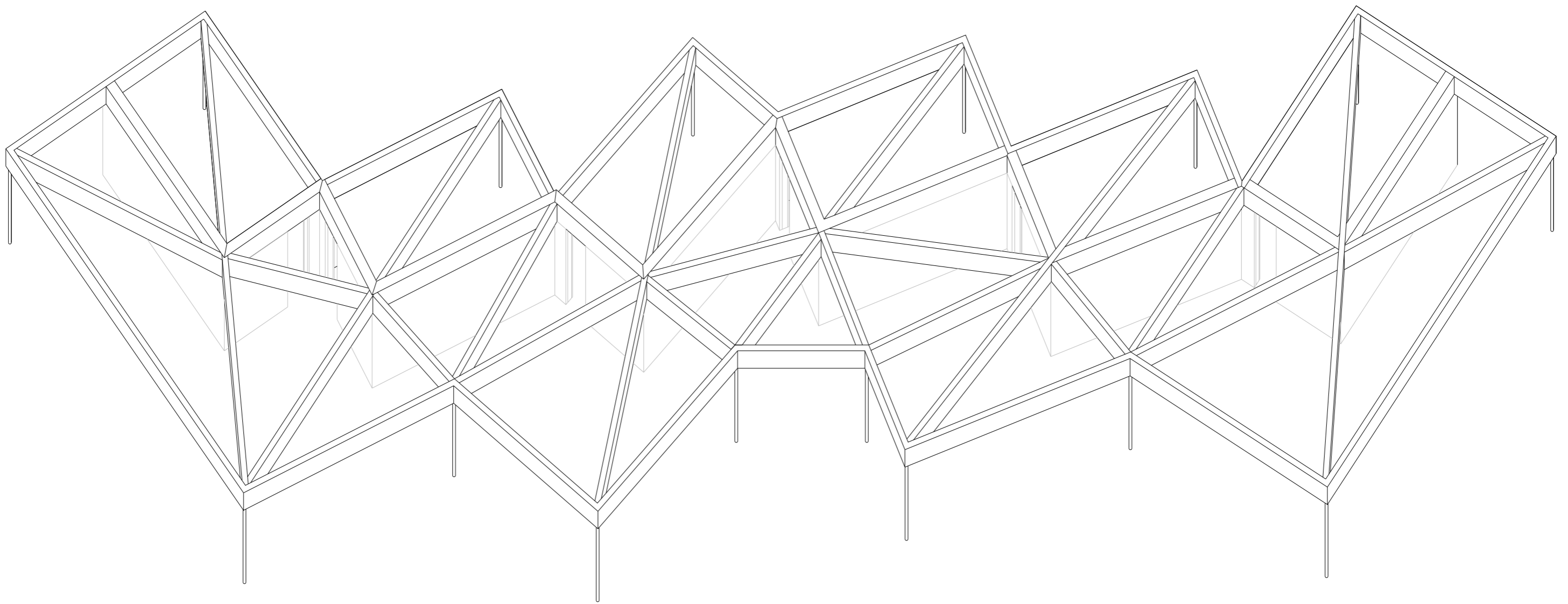




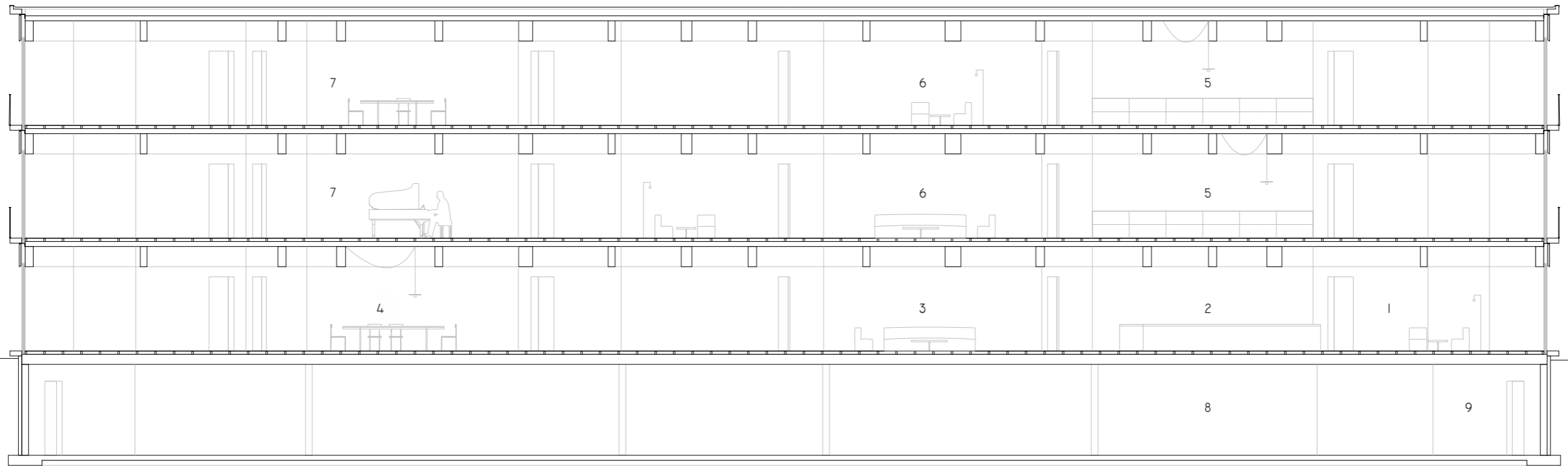
PLAN I.100 BASEMENT



- 1. Parking entrance
- 2. Technical room
- 3. Parking
- 4. Shed







1:100 LONG SECTION A-A



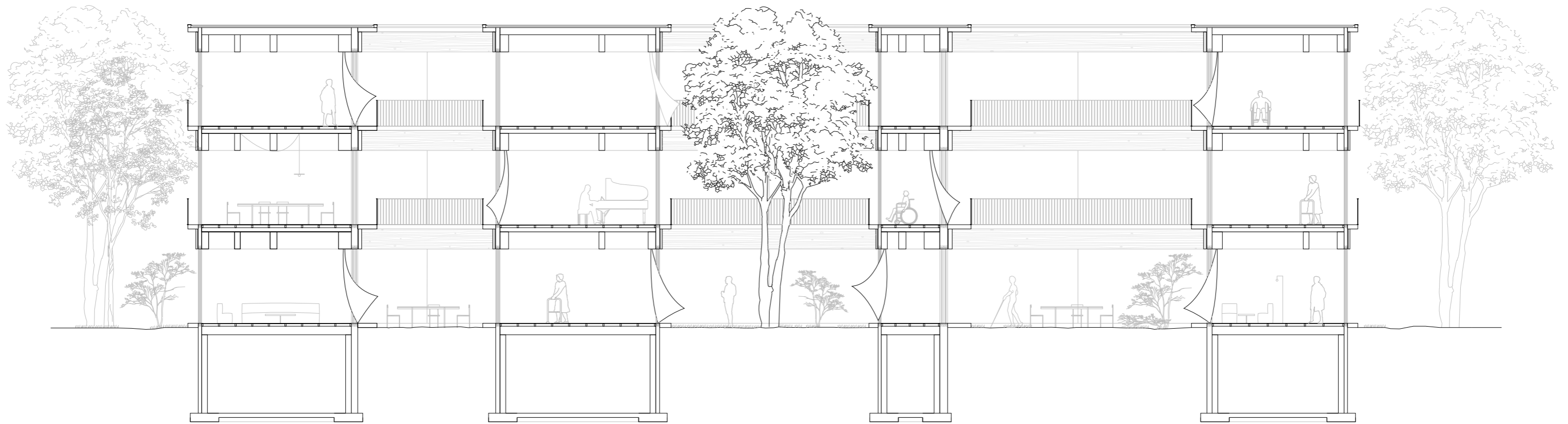
1. Access room
2. Reception

3. Visitor room
4. Shared space

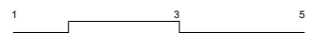
5. Kitchen & dining room
6. Living room

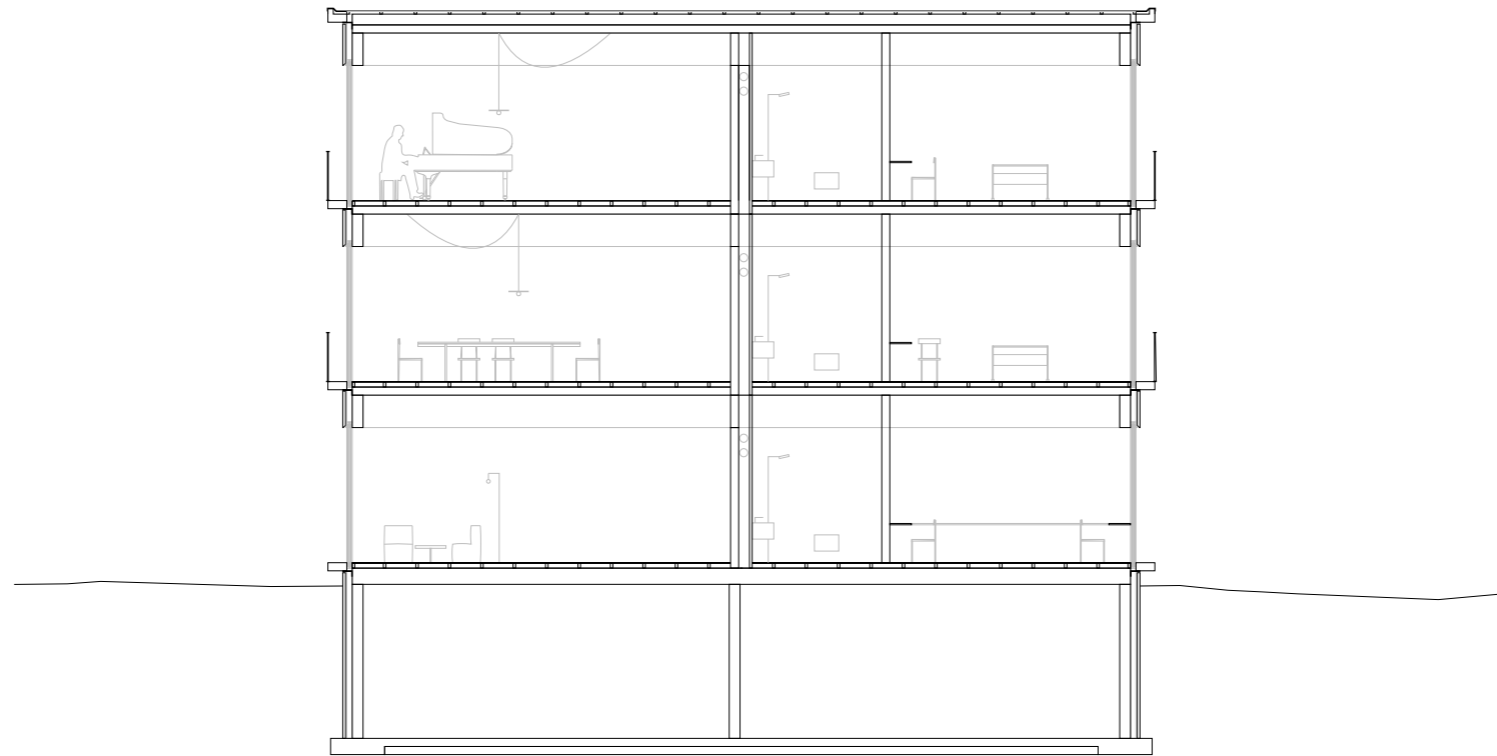
7. Activity room
8. Parking

9. Stairs & elevator core

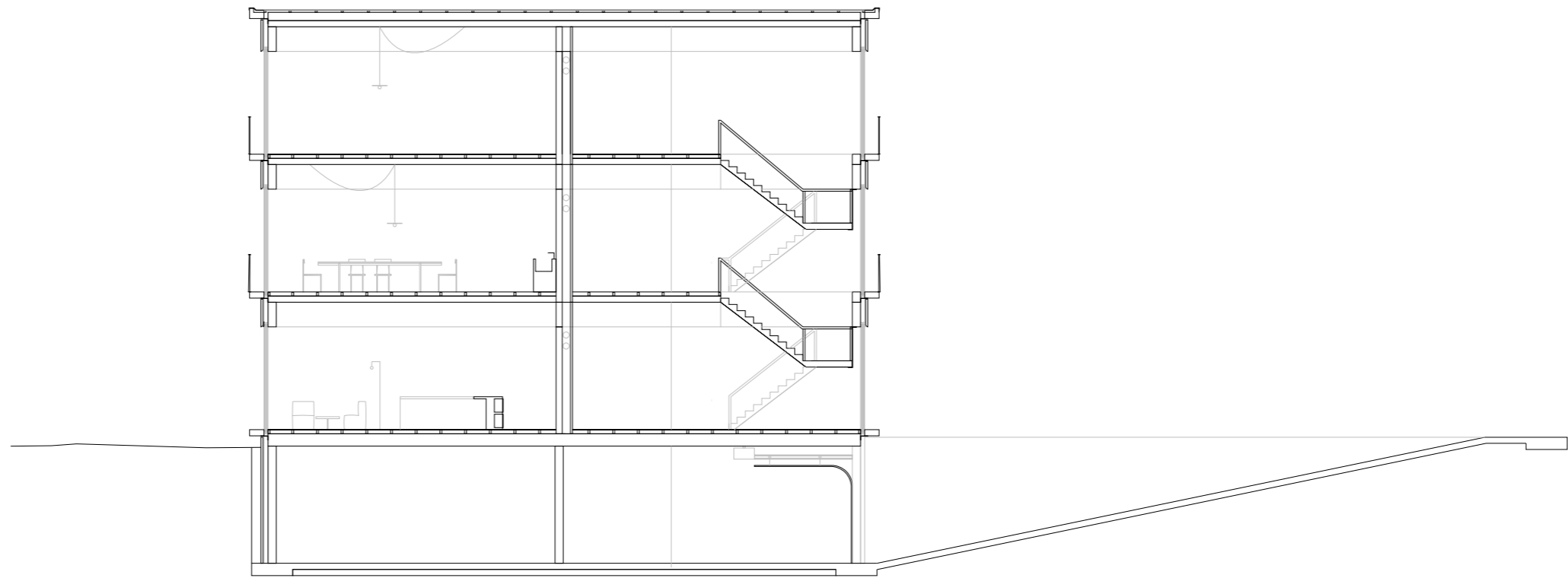


I.100 LONG SECTION D-D

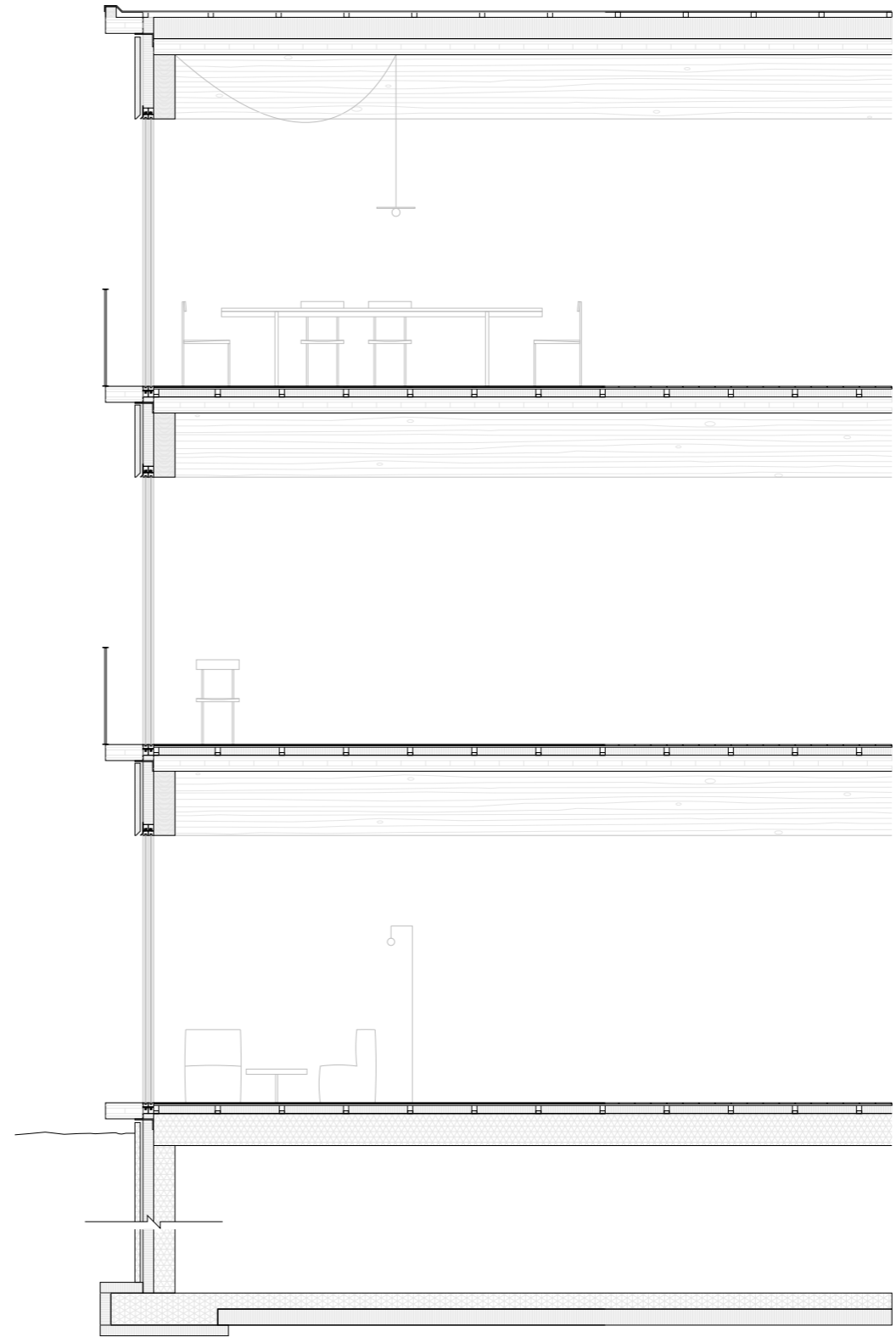
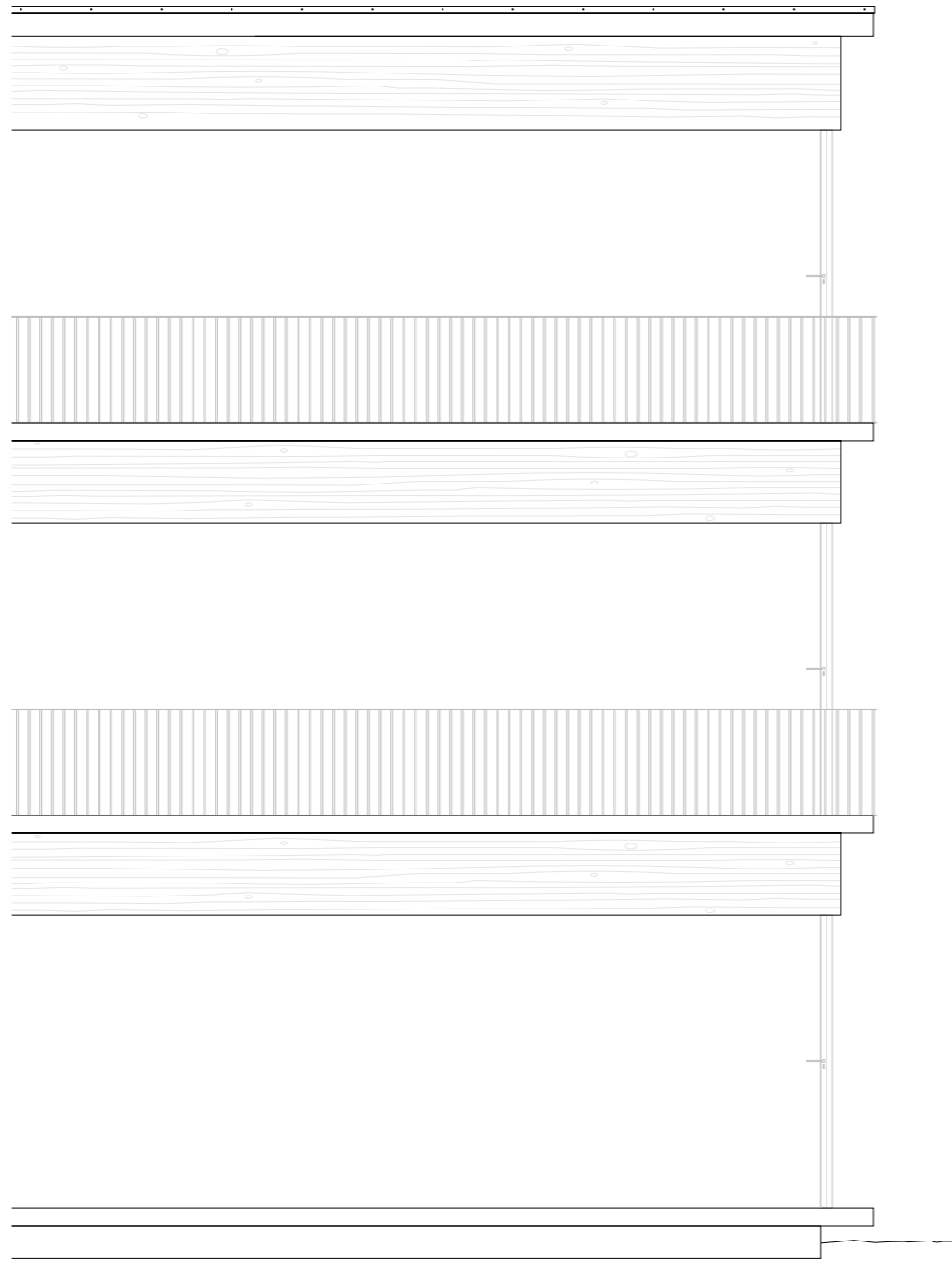


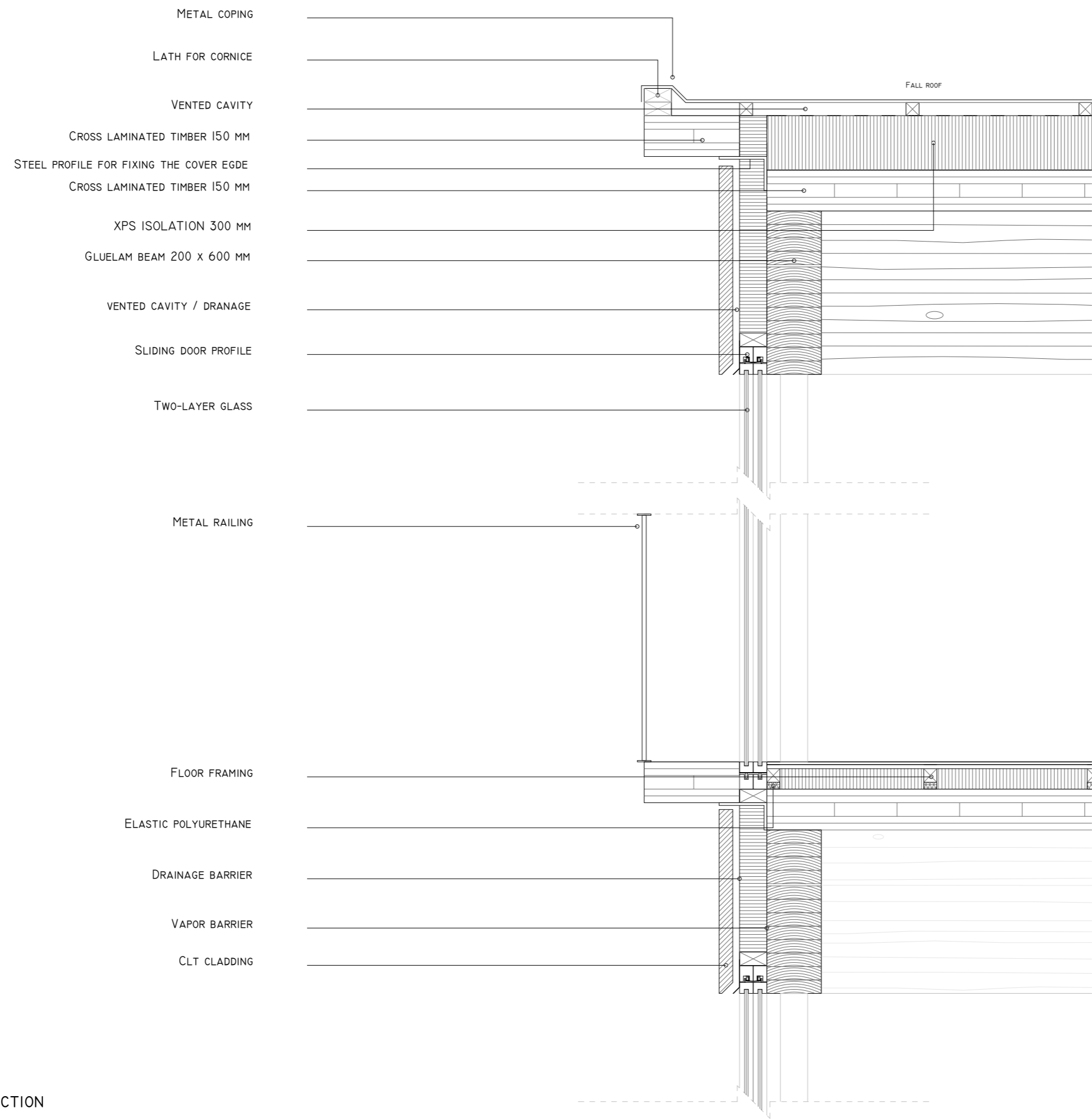


c + 10 ▽
c + 7.15 ▽
c + 3.78 ▽
c + 0.43 ▽
c + 0 ▽





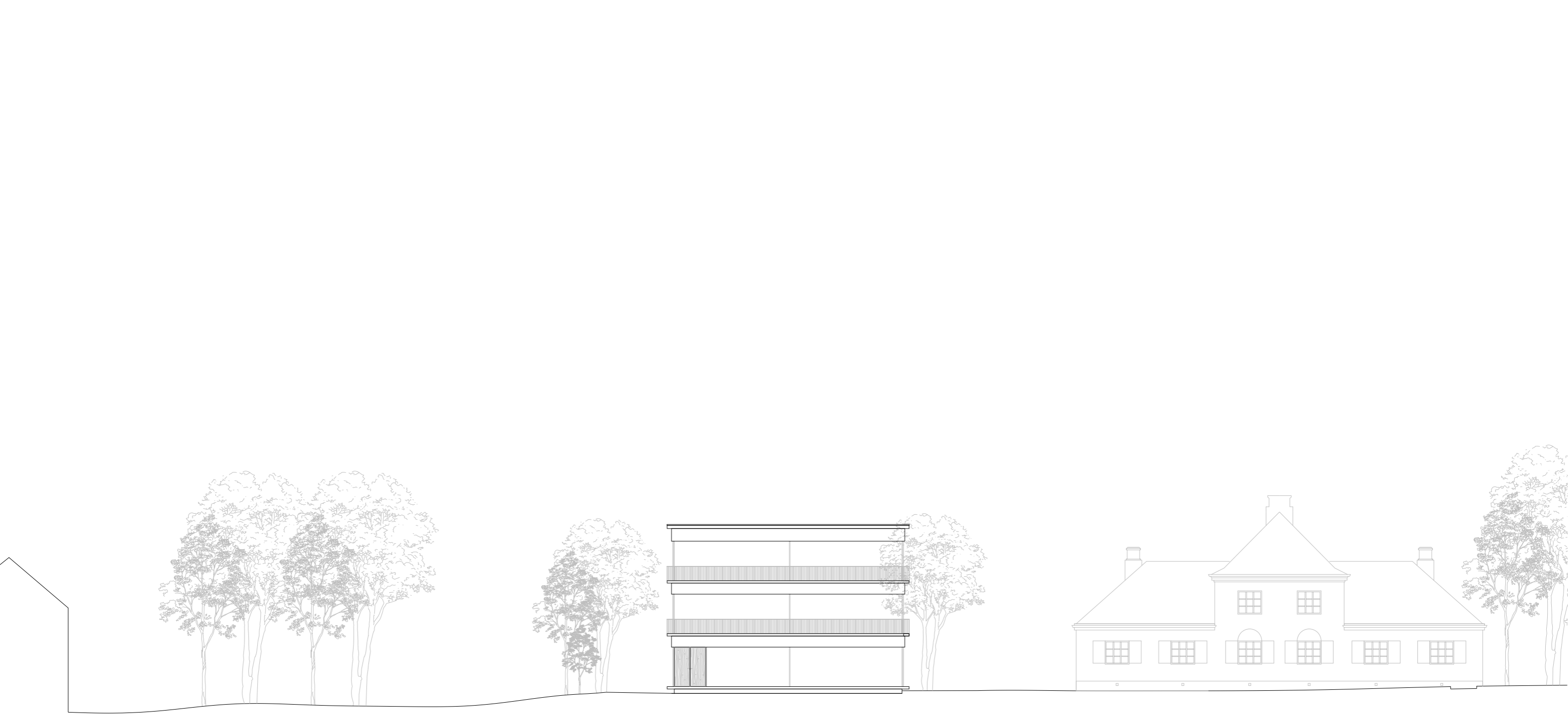




- METAL COPING
- LATH FOR CORNICE
- VENTED CAVITY
- CROSS LAMINATED TIMBER 150 MM
- STEEL PROFILE FOR FIXING THE COVER EDGE
- CROSS LAMINATED TIMBER 150 MM
- XPS ISOLATION 300 MM
- GLUELAM BEAM 200 X 600 MM
- VENTED CAVITY / DRANAGE
- SLIDING DOOR PROFILE
- TWO-LAYER GLASS
- METAL RAILING
- FLOOR FRAMING
- ELASTIC POLYURETHANE
- DRAINAGE BARRIER
- VAPOR BARRIER
- CLT CLADDING

I.10 WALL SECTION





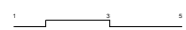
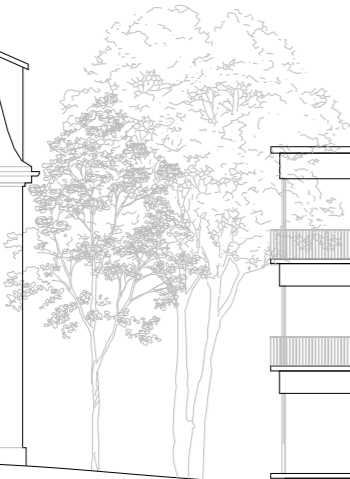






Illustration of physical model

