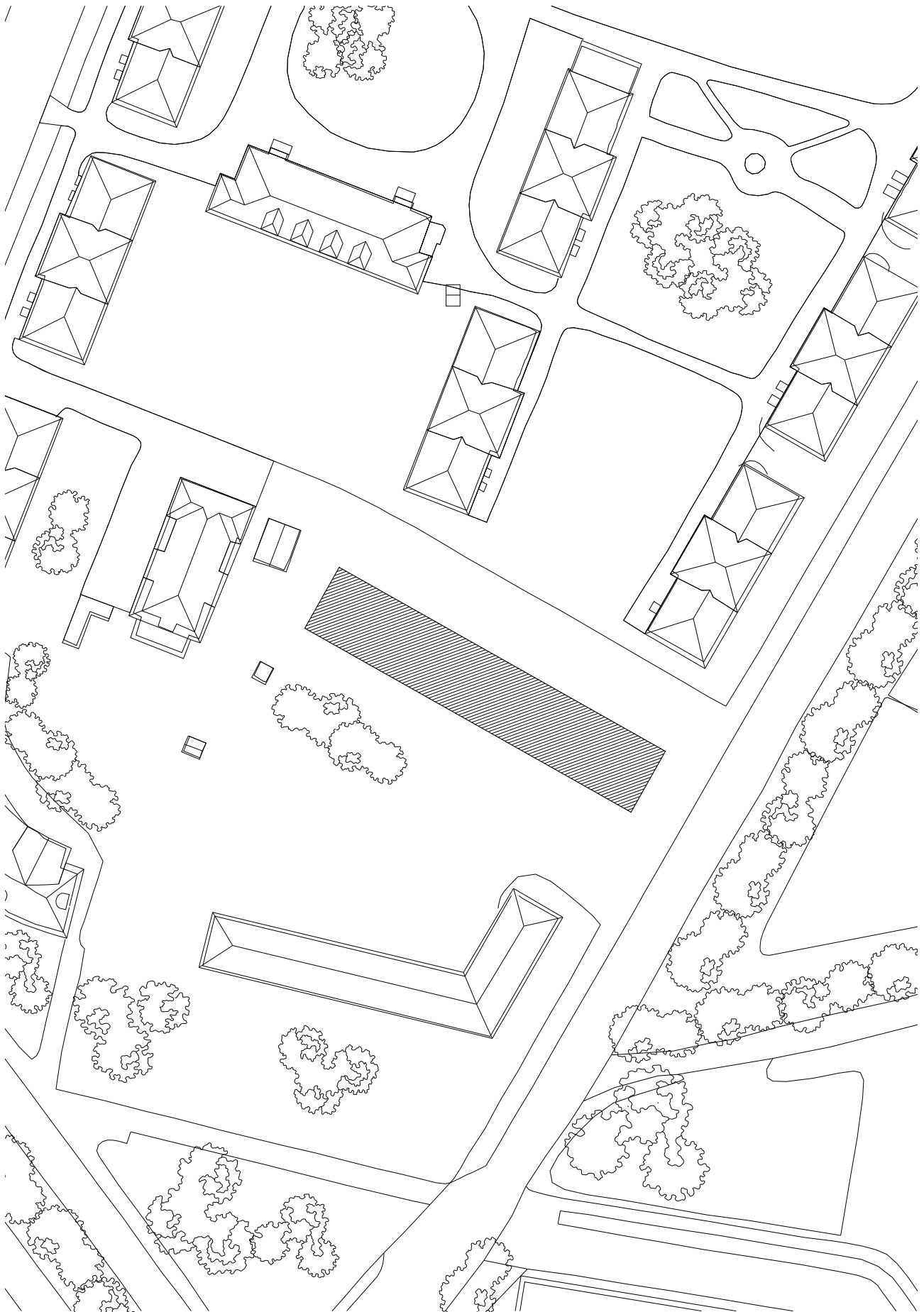


Booklet 04

Volume

This booklet contains volume studies and building forms on the plot. The purpose is to look at sizes and make some assessments of how the building forms create different situations and conditions to existing buildings on the site. The studies is based on the previous booklet "Typology "and aims to find the correct solution for the size, form and proportion for the project.



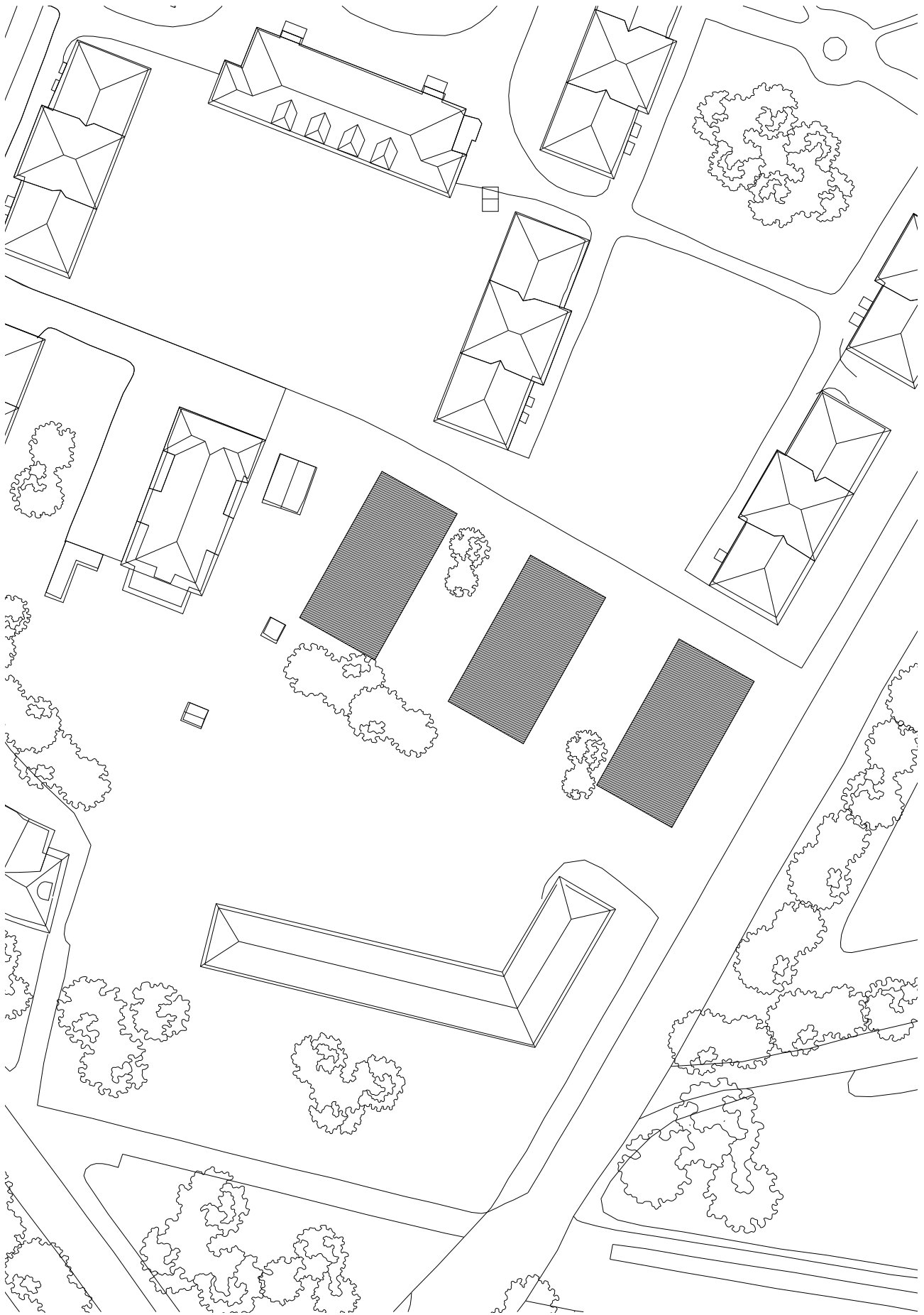
Footprint : 432 m2
 Total built area for all floors : 1296
 Amount of patientrooms : 24
 Number of floors : 3

The building volume faces two directions, where the patient room is on one side and the shared spaces on the other side. The width of the volume relates to the width of existing

buildings on the site. The volume ends the two open courtyards and delimits these. The volume follows the building lines from the quarter and the length of the two smaller

houses to the north. The volume provides space for access and parking along the north side of the site.





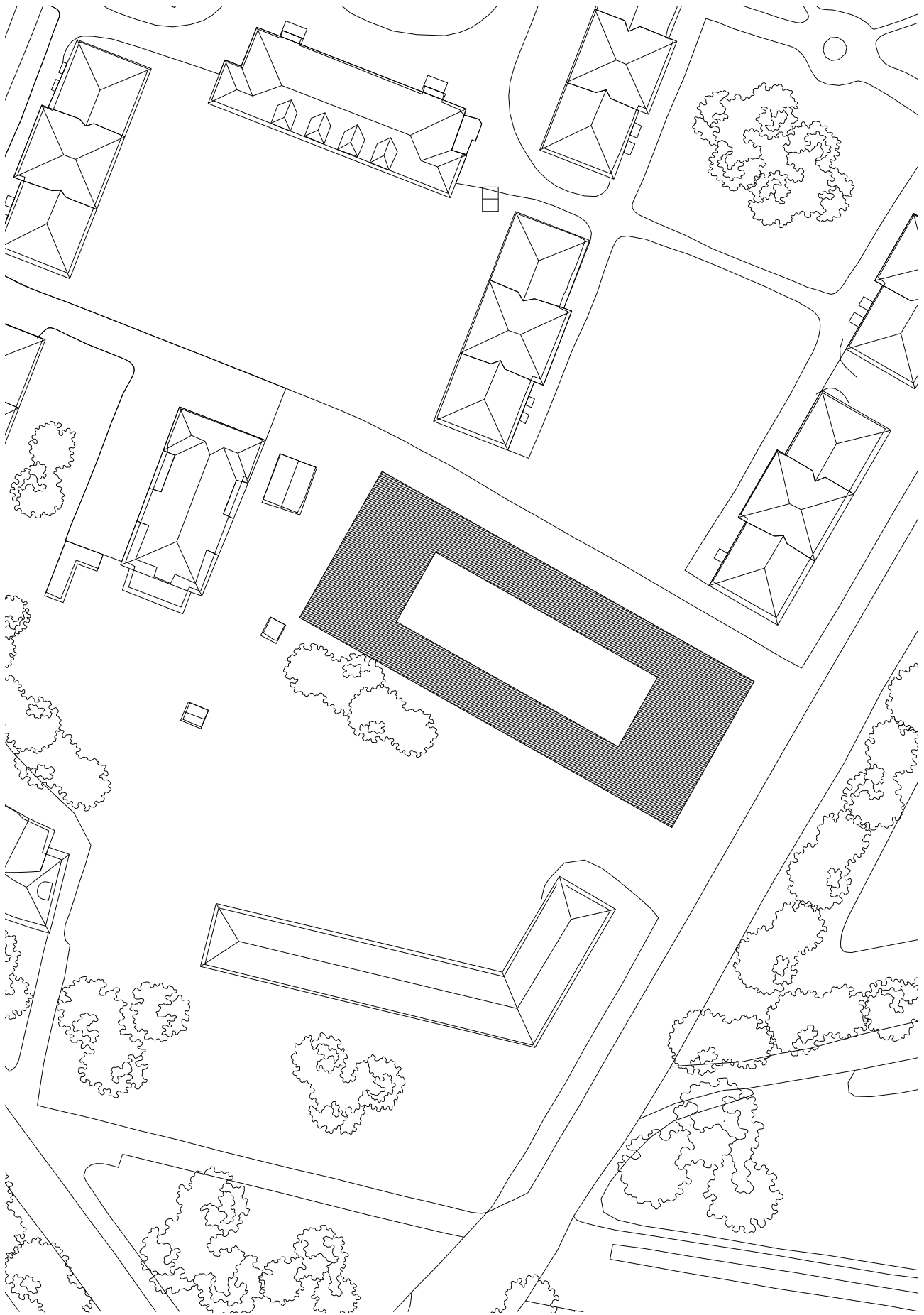
Footprint : 570 m2
 Total built area for all floors : 1710
 Amount of patientrooms : 36
 Number of floors : 3

The strategy provides three separate building volumes, with the possibility of more sheltered outdoor space for the departments. Each building can be programmed with separate

wards for the different patient groups in the building. Each building can thus have different specialists and staff adapted to the group of patients. The distance between the volumes,

divides and creates a passage between the two existing courtyards in north and south. Access and parking can be placed in front.





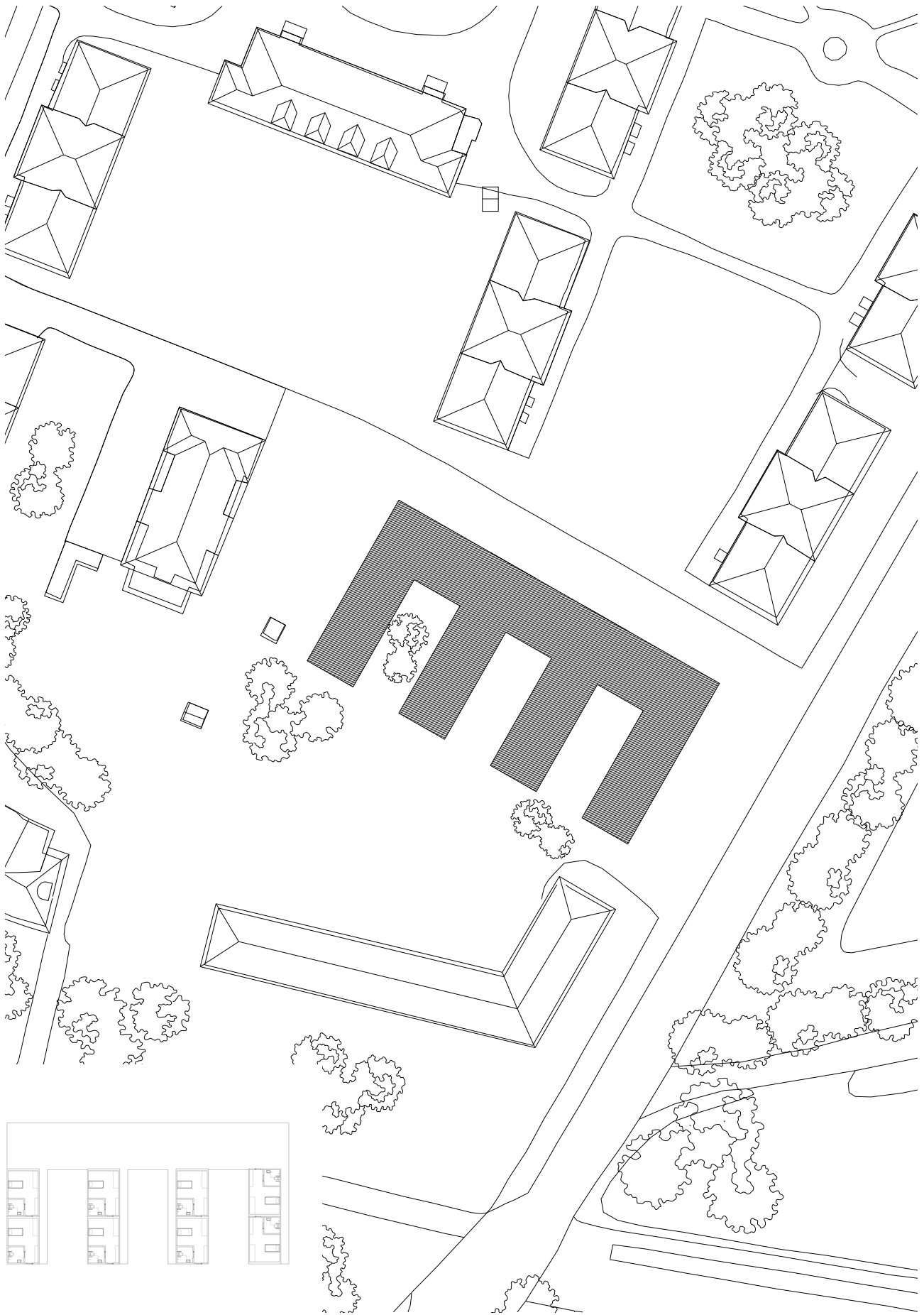
Footprint : 642 m2
 Total built area for all floors: 1926
 Amount of patientrooms : 36
 Number of floors : 3

The building volume allows for patient space towards the outside and inside of the enclosed courtyard. This makes it possible to group patient groups more serious disease towards

the inner courtyard and patients with milder disease towards the outer garden. The volume has the potential to utilize the entire plot's size and proportions. The strategi results in larger

shared space area compared with the other strategies.





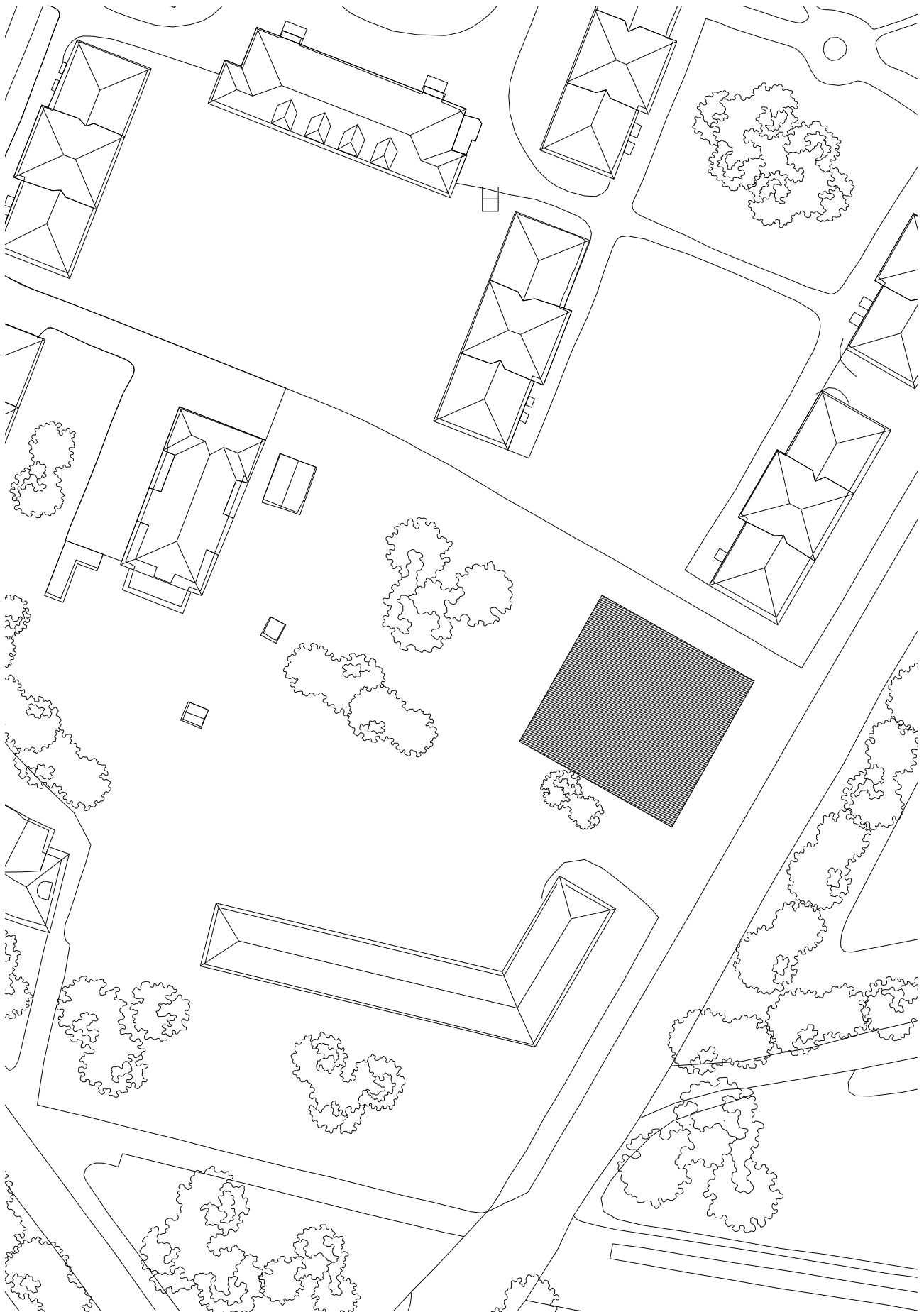
Footprint : 630 m²
 Total built area for all floors : 1890
 Amount of patientrooms : 24
 Number of floors : 3

The idea are based on a core of common rooms with patient rooms that grow out of the core and create some intimate courtyards. The intimate courtyards can be used for patients

with more serious illness, where the openings can face the intimate outdoor spaces to create privacy for this group. The second group of patients can turn more towards the outside

of the plot. The arms can function as separate departments connected to the common rooms. The entrance can be placed on the front of the site connected to the core.





Footprint : 361 m²
 Total built area for all floors: 1083
 Amount of patientrooms : 24
 Number of floors : 3

The building volume has a small footprint which results in a large outdoor space on the site. The square provides facades in all directions and addresses the equally existing

buildings from all directions. The patientrooms are placed along the north and south side of the site, while the shared space are placed in the center. This allows a free space in the mid-

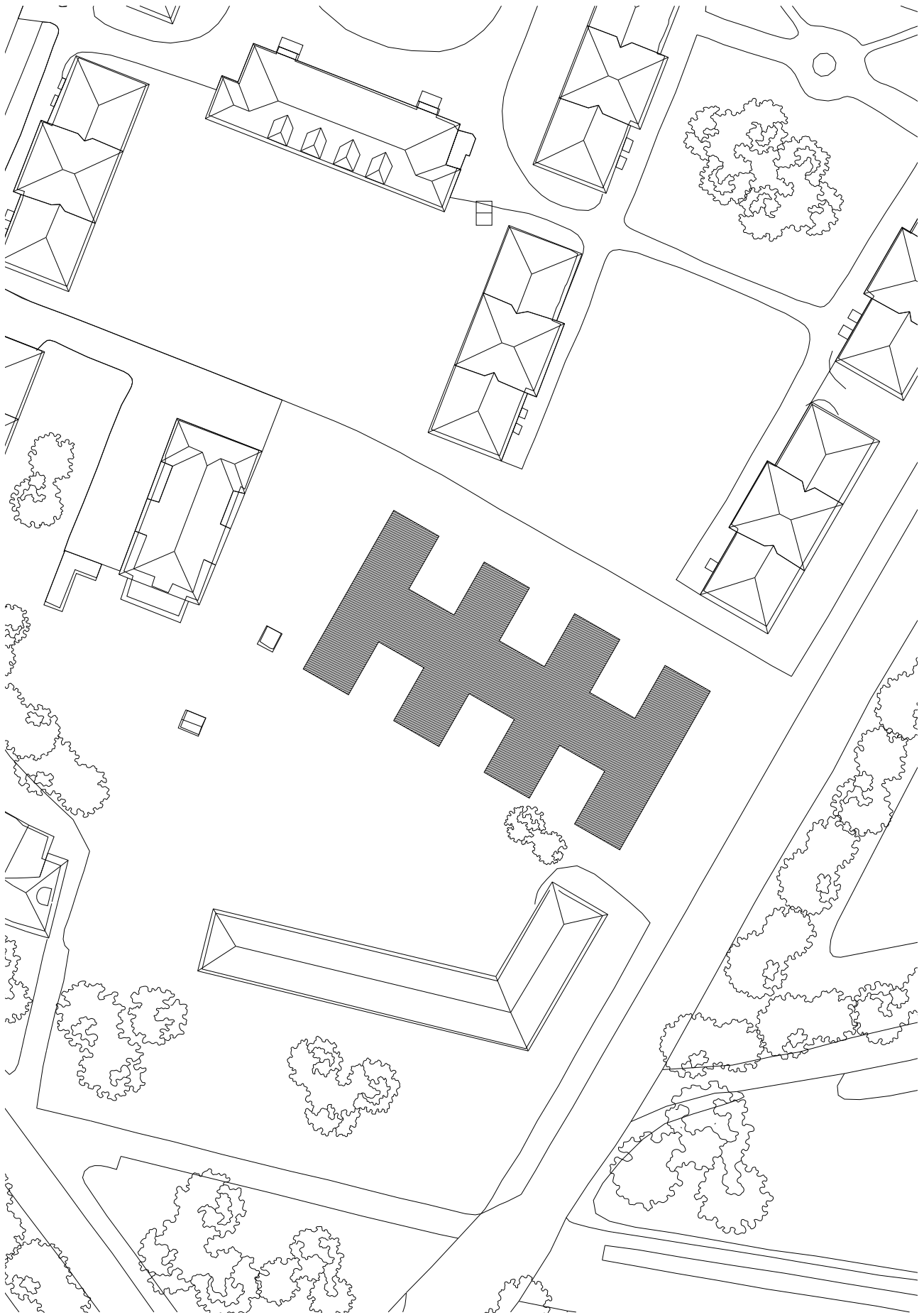
dle for circulation and acces to the building.



5

25

50



Footprint : 633 m²
 Total built area for all floors: 1899
 Amount of patientrooms : 24
 Number of floors : 3

The volume provides private courtyards for each patientroom. This strategy is based on a private nursinghome where each patient lives seperated from each other and has equal

spatial qualities. The shared spaces are placed in the middle of the volume and creates equal distance for acces from each patient. The space inbetween the patientrooms provides

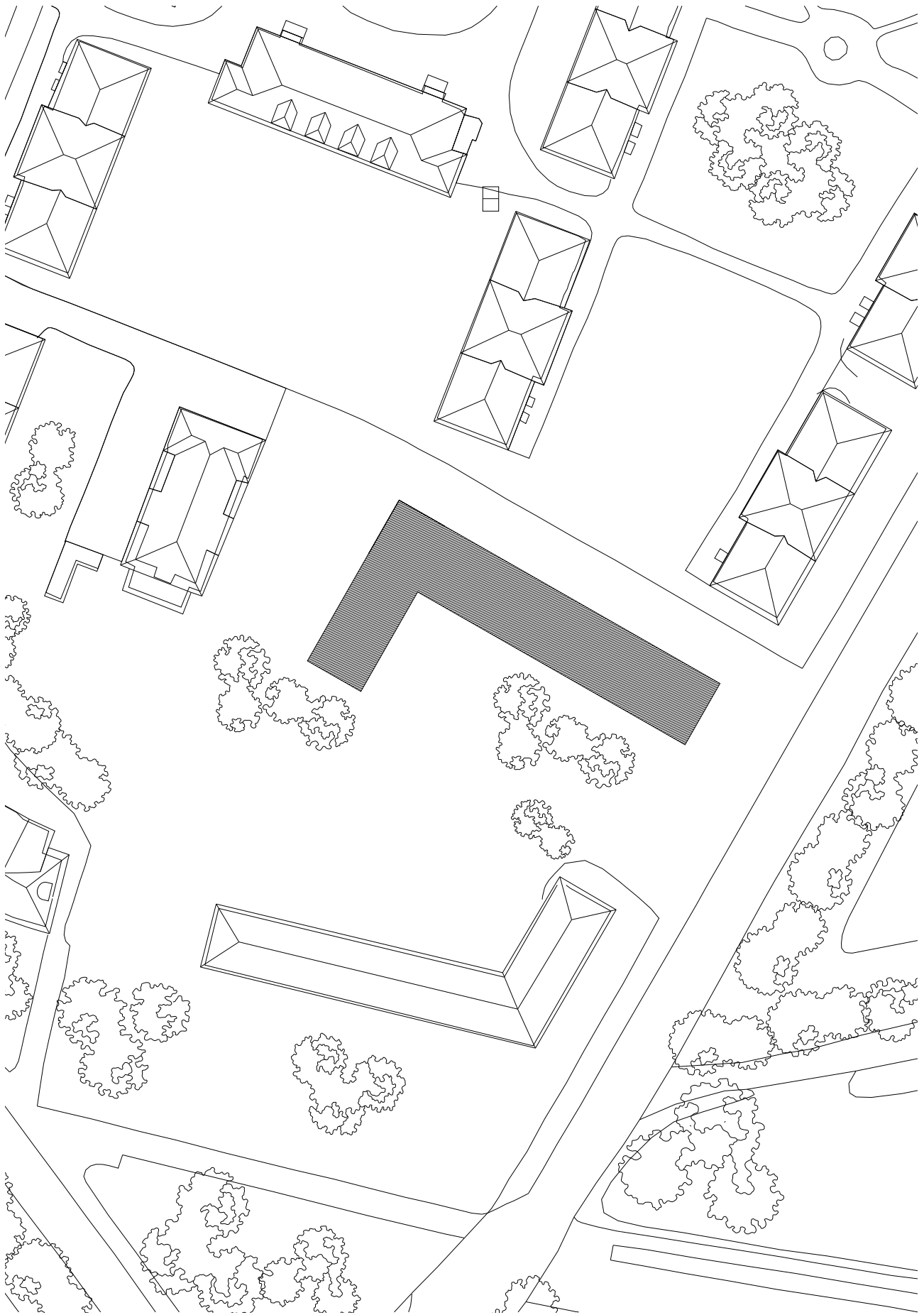
view and light into the sharedrooms.



5

25

50



Footprint : 427 m²
 Total built area for all floors : 1281
 Amount of patientrooms : 21
 Number of floors : 3

The volume is shaped as a L form which provides a closed courtyard between the proposal and the existing building at site. The form is imitating the existing house at site

and follows the building lines in all directions. The volume is thought as two volumes, the long form is the patientsrooms while the short form is the common spaces facing the kinder-

garten in east. The strategy establishes a large outdoor space and contains similar proportions and scale as the surrounding buildings.

