

Integration through nature

Tveita Center and Metro Station

A meeting point for the residents of the area. It takes 10 minutes by subway from Oslo city center to Tveita

Farm

Tveten farm offers day care for the elderly as well as a leisure club for children and teenagers. In addition, there is a riding school and the opportunity to grow vegetables

Park

Citynature, tobogganing in winter, barbecues and picnics in summer

Godliaskogen

Local environmental forest

School and sport center

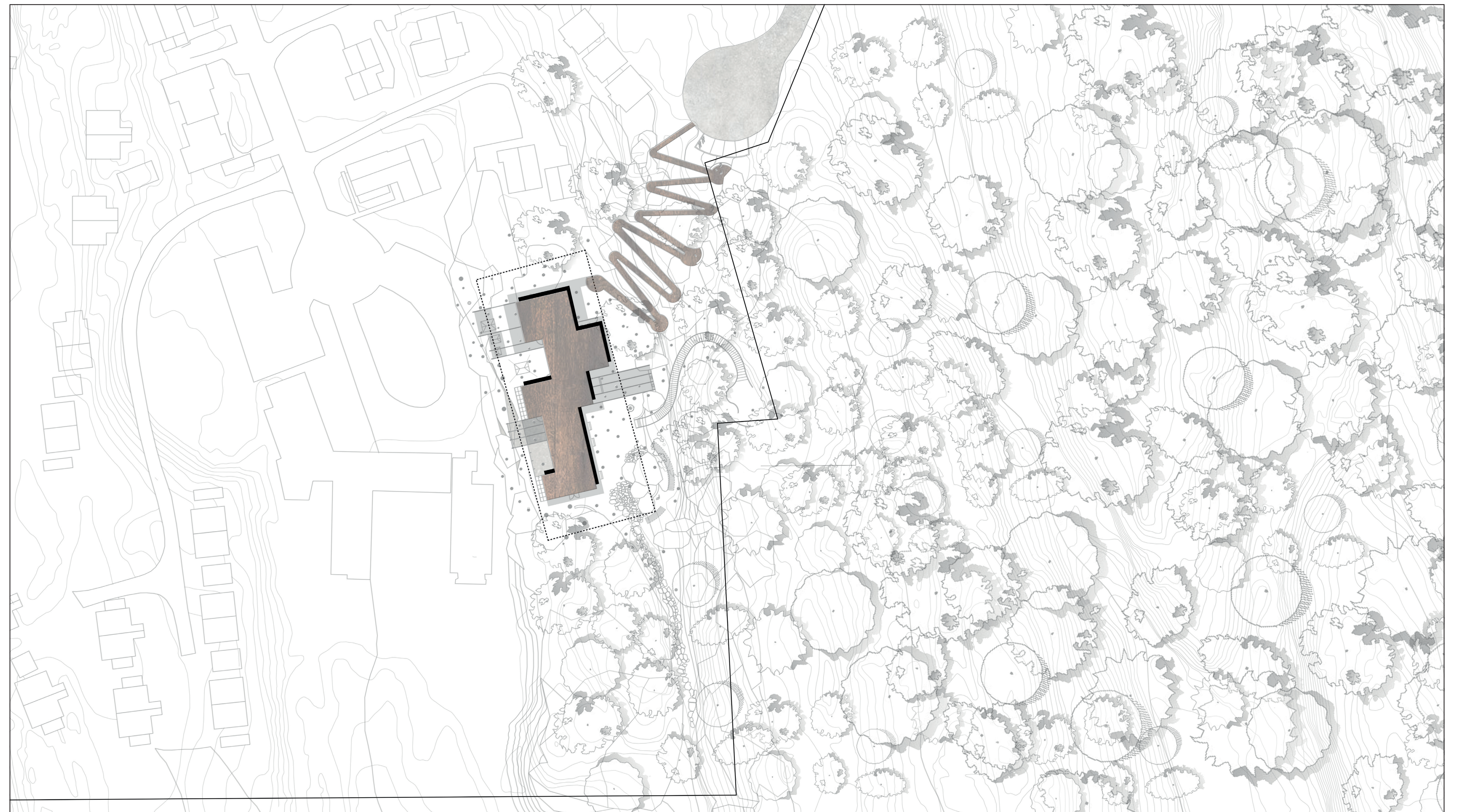
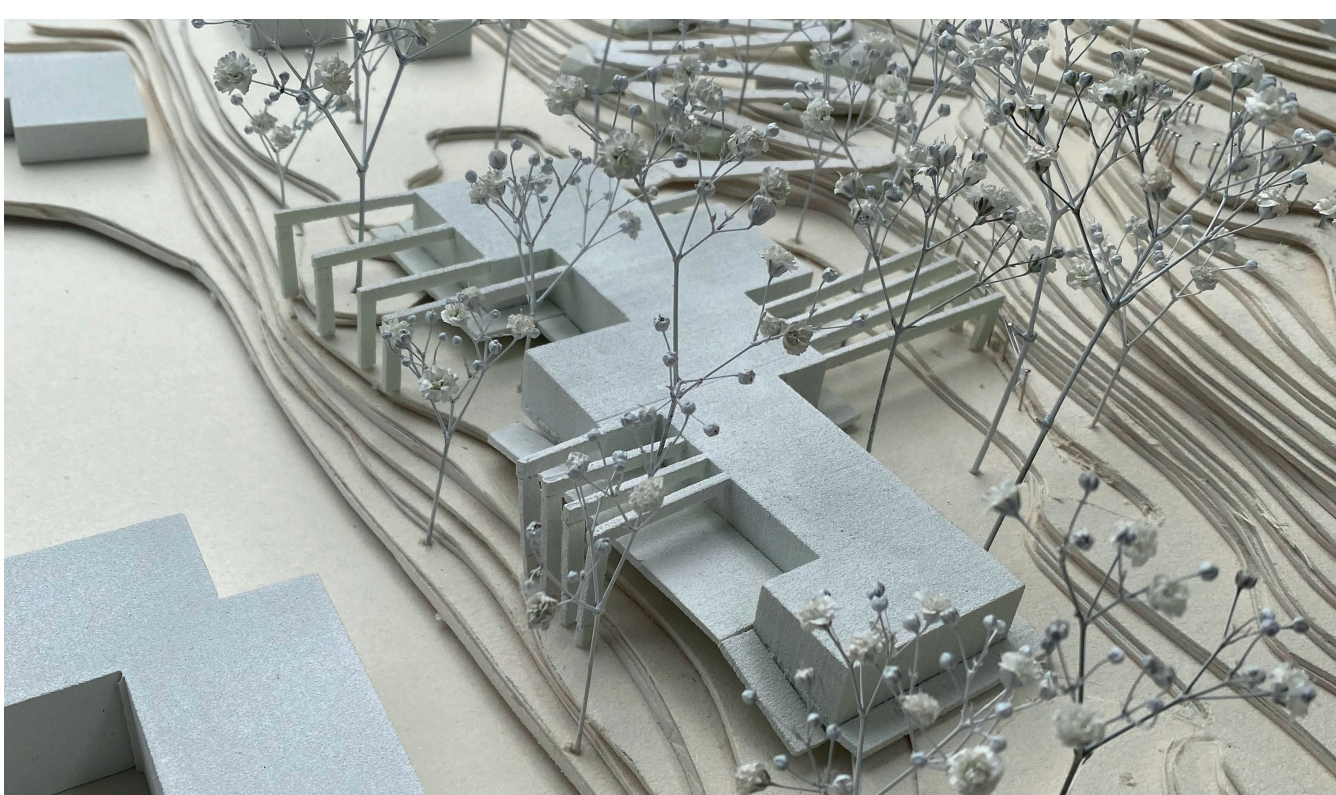
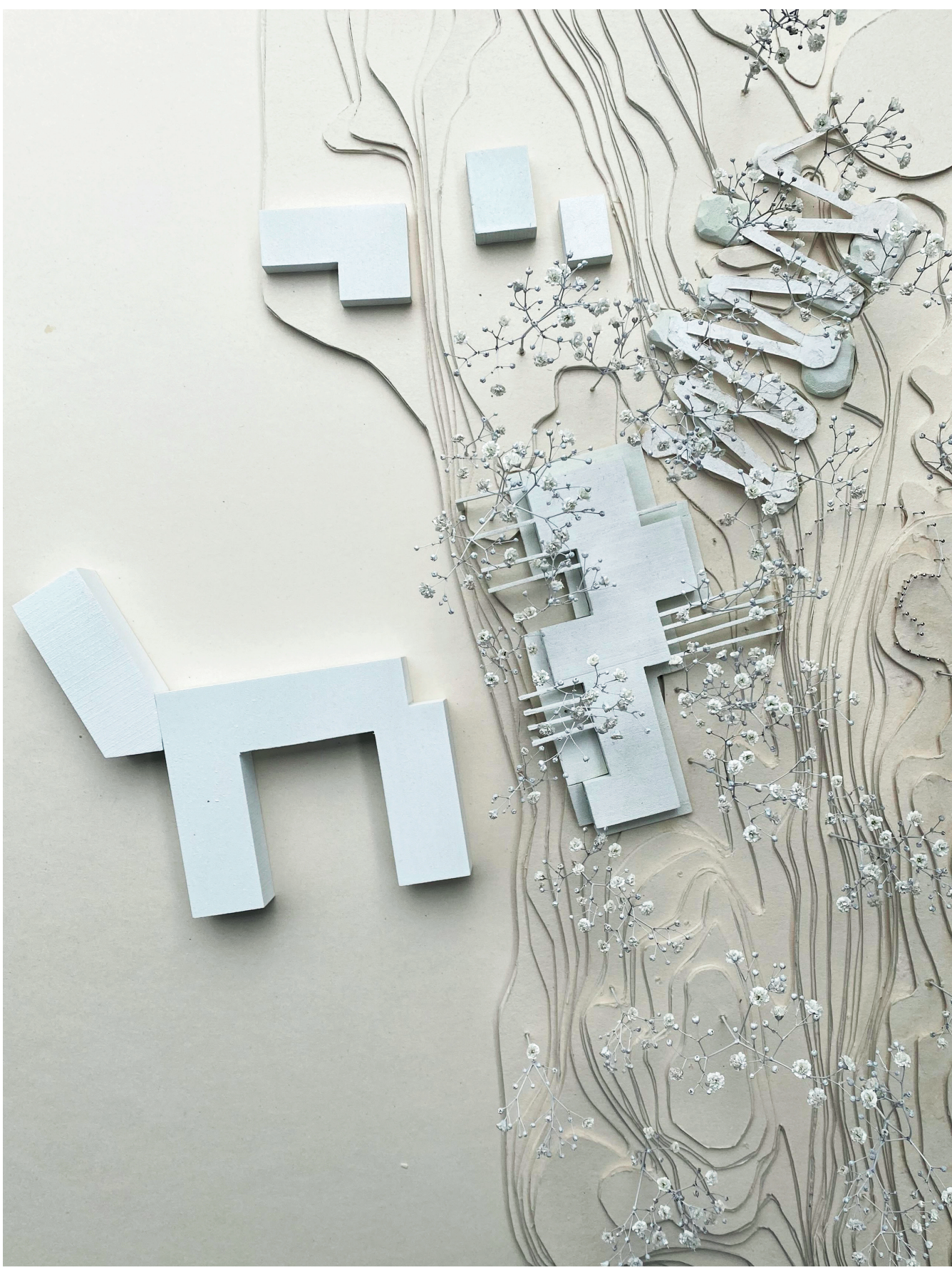
Soccer field, tennis court, playground, gyms



TVEITA

SITE

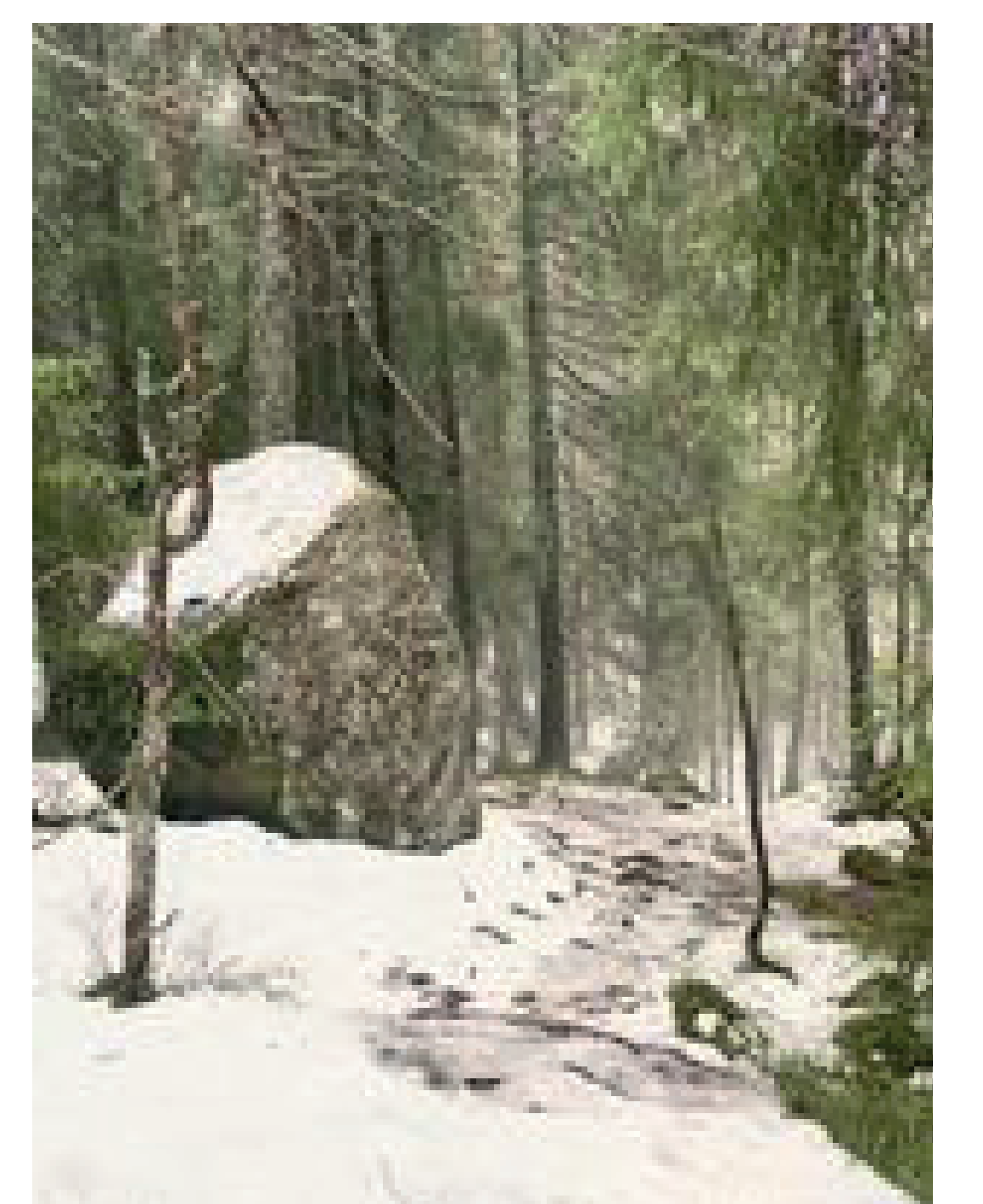
FOREST - MARKA



SITEPLAN

5 10 15 20 25 30M

MODEL PHOTO

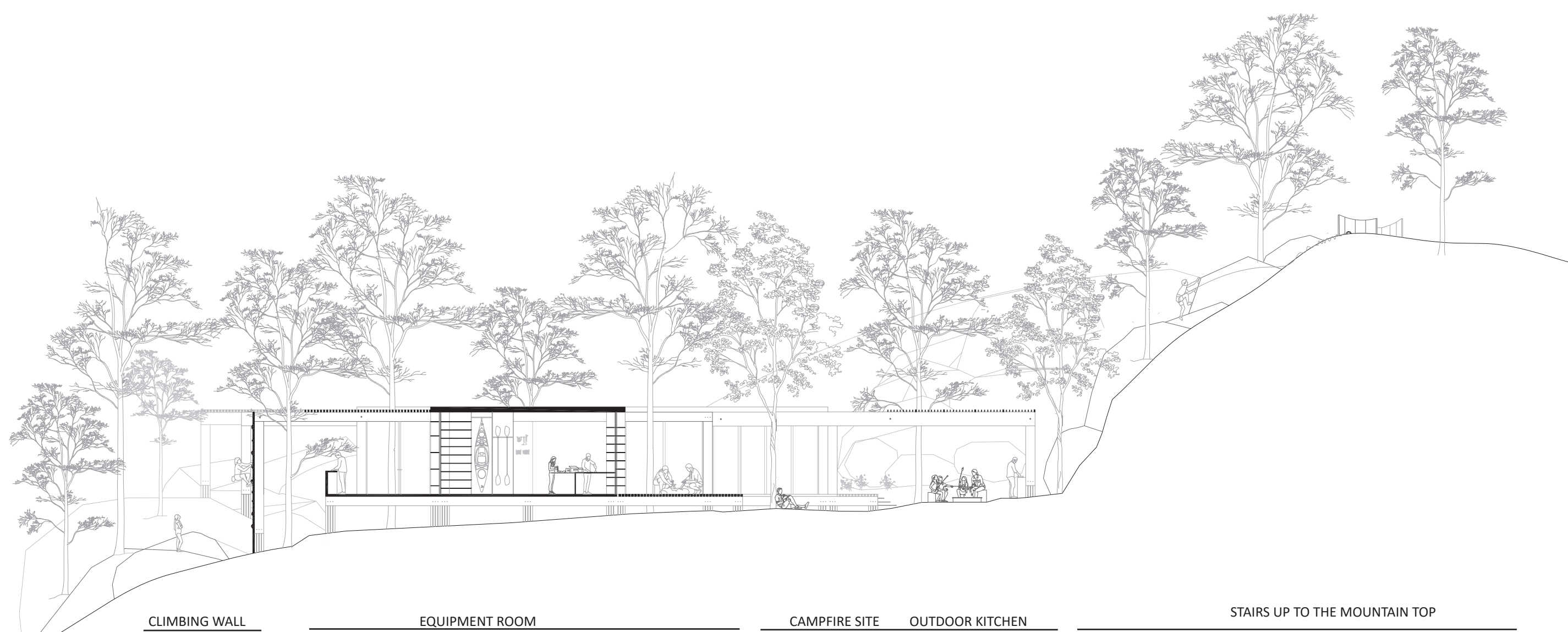
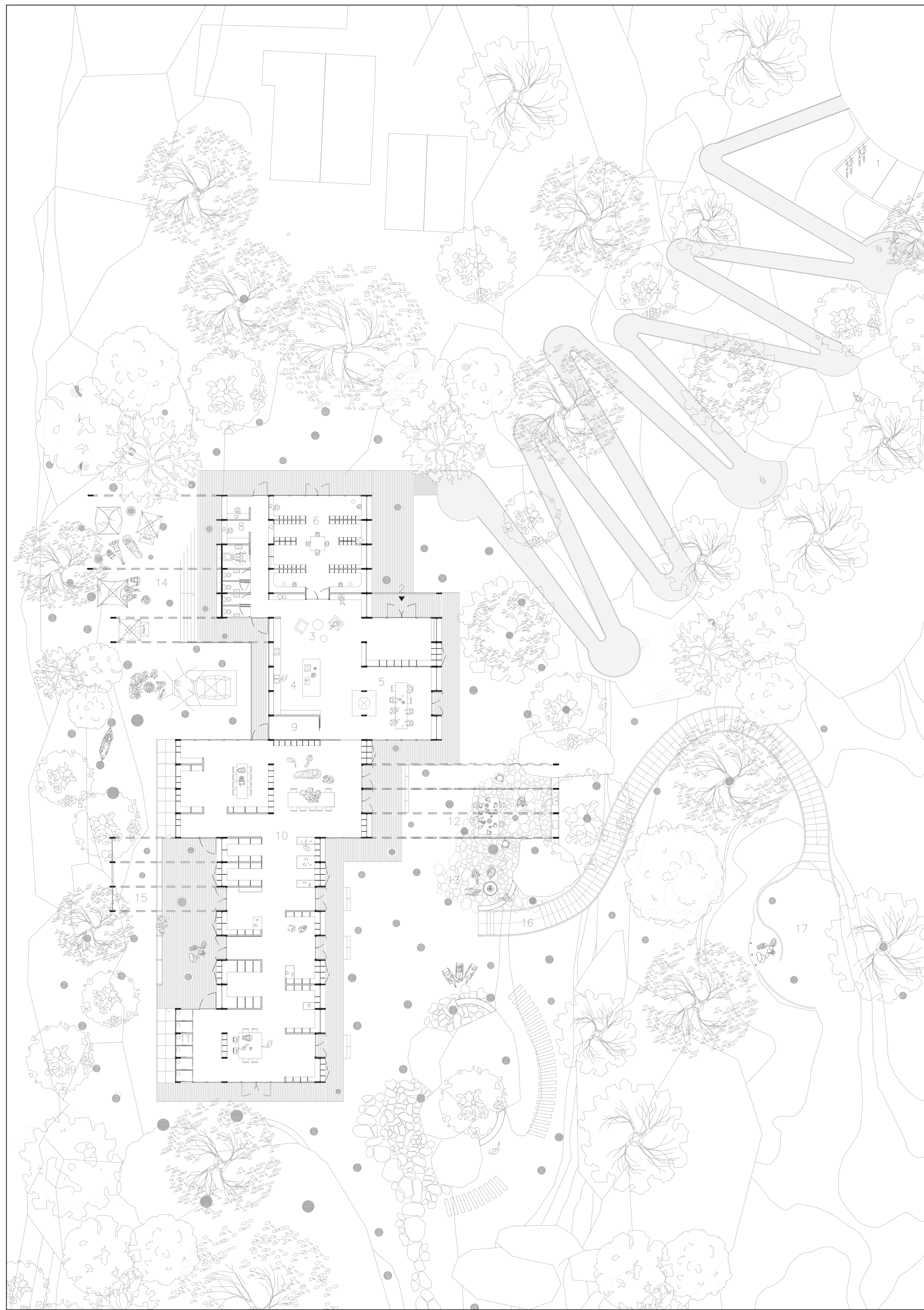


SITE FOTO

- 1 PARKING
- 2 MAIN ENTRANCE
- 3 LOBBY
- 4 KITCHEN
- 5 DINING AREA
- 6 LIBRARY
- 7 WC
- 8 ADMINISTRATIVE OFFICES
- 9 STORAGE / TECHNICAL
- 10 EQUIPMENT AND REHEARSAL ROM
- 11 CHANGING ROOM
- 12 OUTDOOR KITCHEN
- 13 CAMPFIRE SITE
- 14 TENT SITE
- 15 CLIMBING WALL
- 16 STAIRS TO MOUNTAIN TOP
CONNECTED TO EXCISING PATHS
IN THE FOREST
- 17 MOUNTAIN TOP CLIMBING SPACE

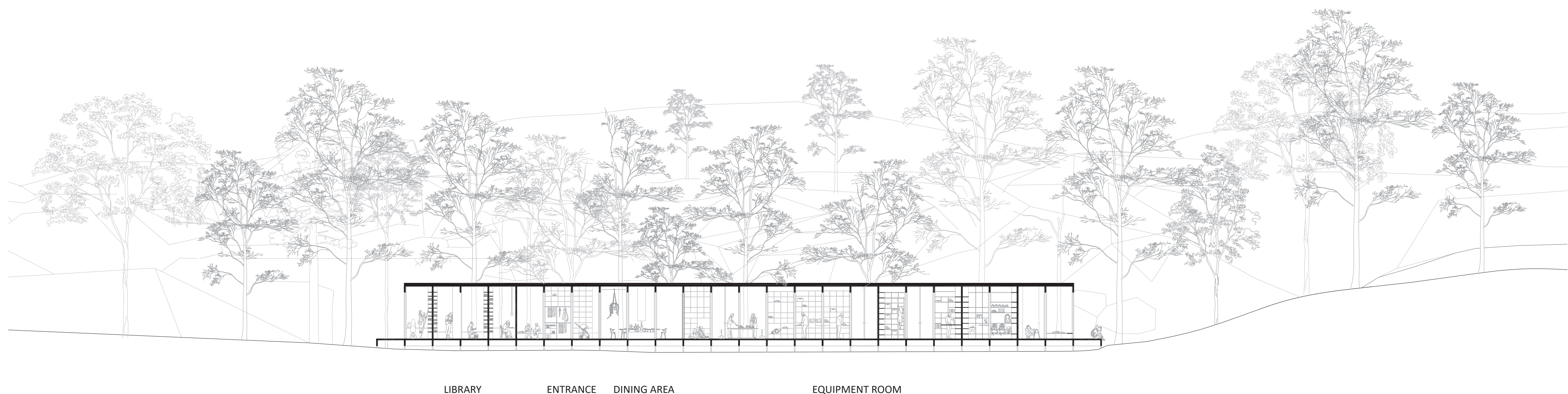
N
PLAN

1m 2m 3m 4m



SECTION

1m 2m 3m 4m

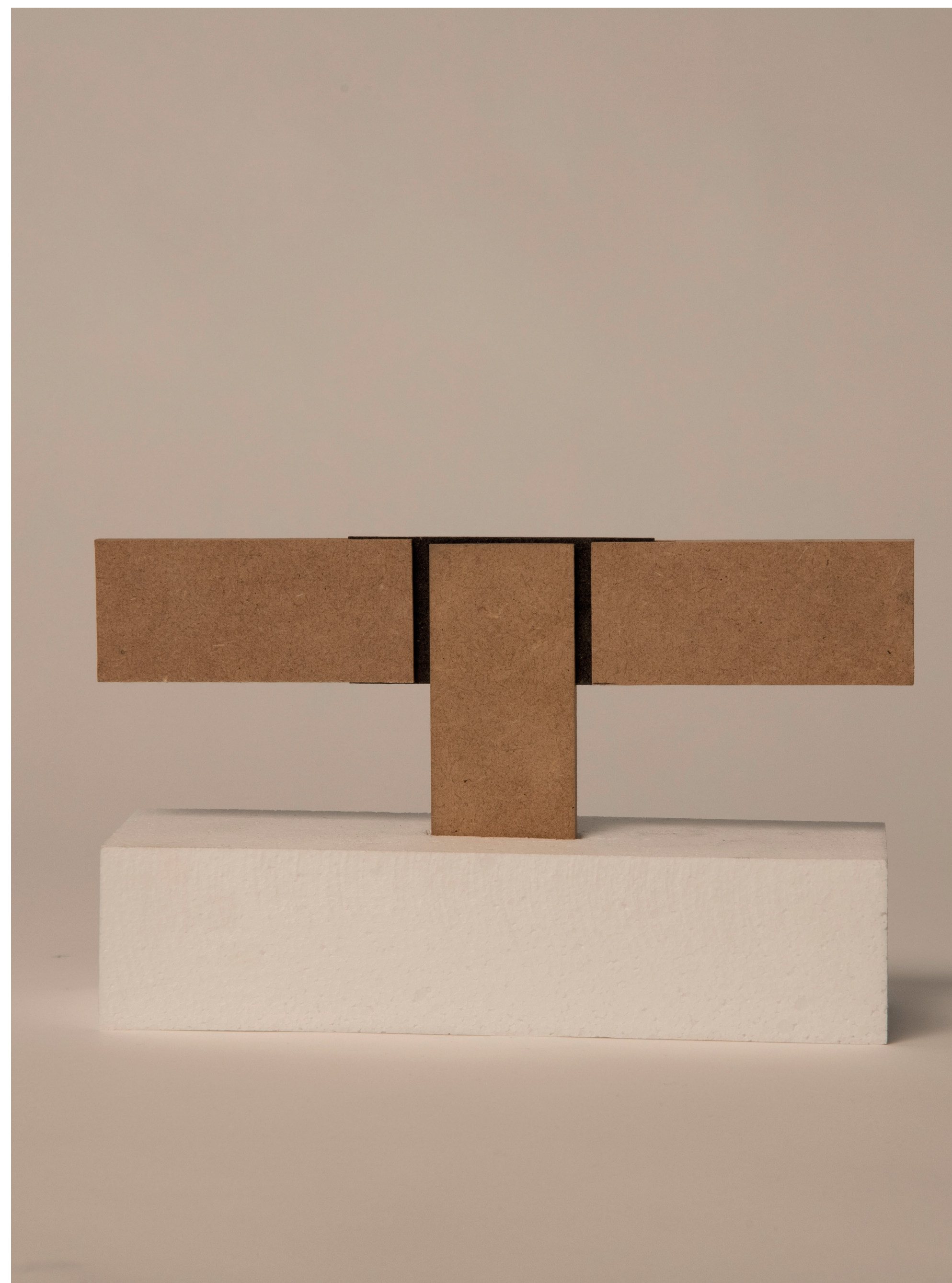


SECTION

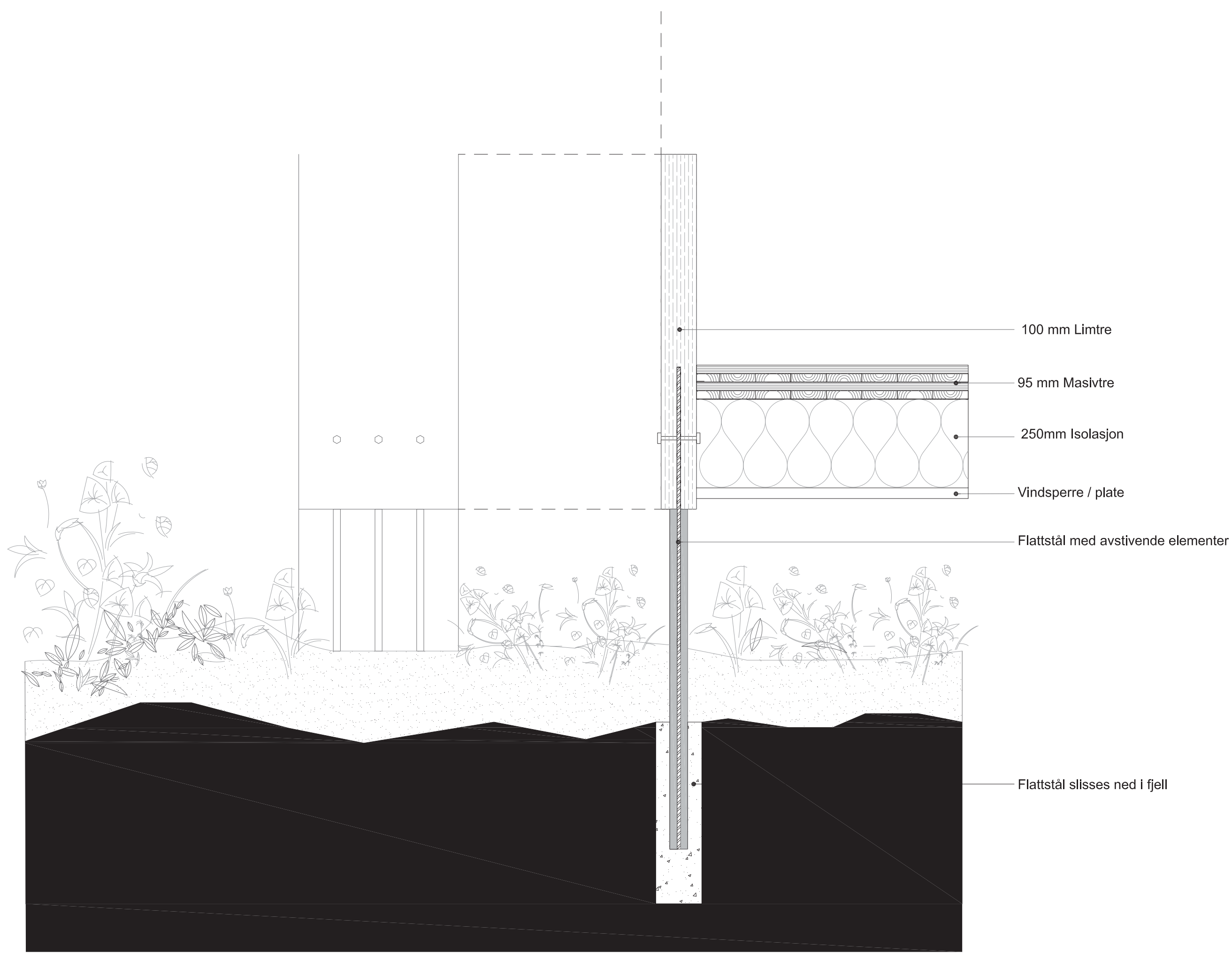
1m 2m 3m 4m



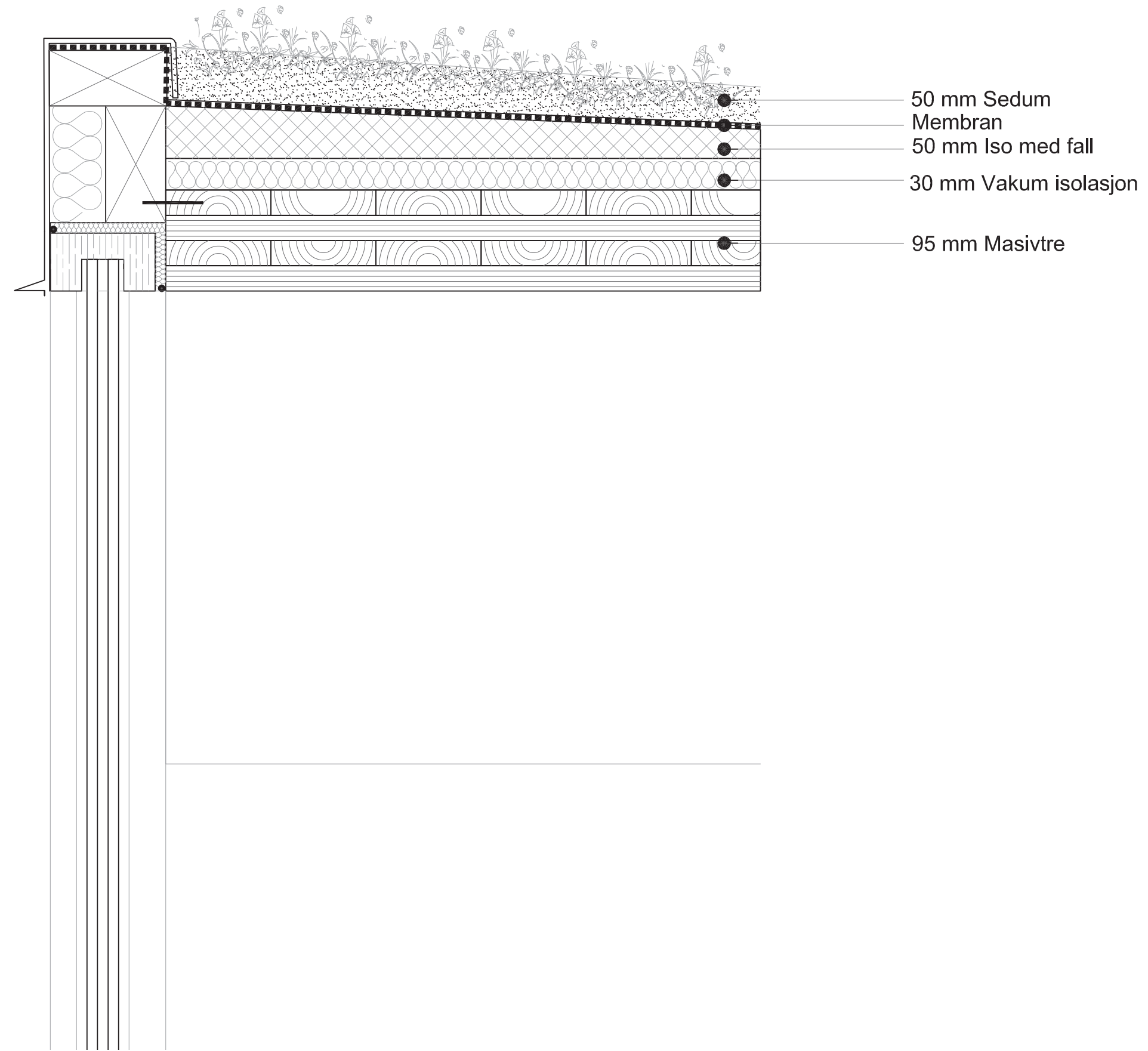
COLLAGE, MODEL PHOTO AND SITE PICTURE



MODEL PHOTO



DETAIL FOUNDATION 1:10



DETAIL ROOF 1:10



COLLAGE, MODEL PHOTO AND SITE PICTURE