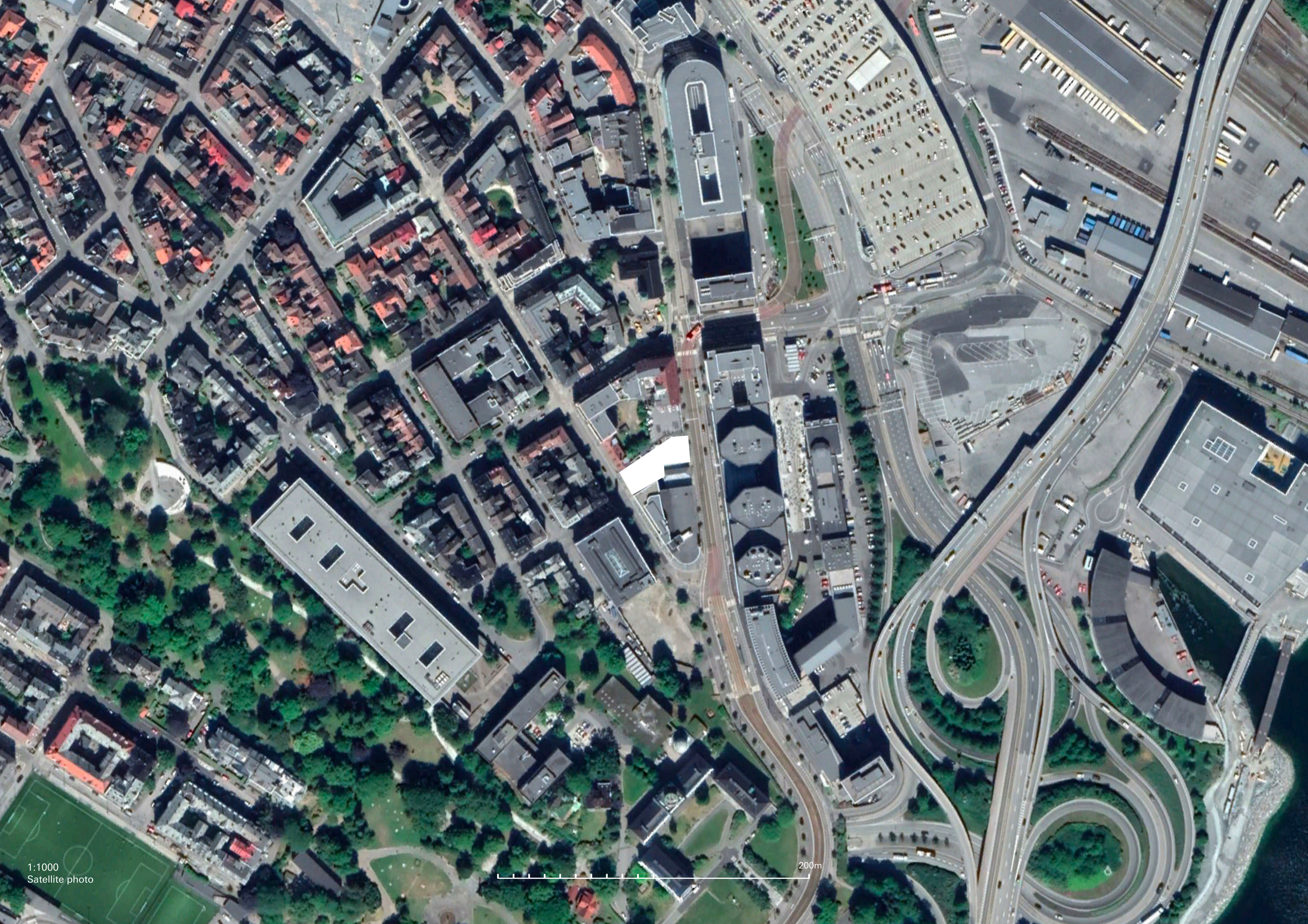


Naked Architecture

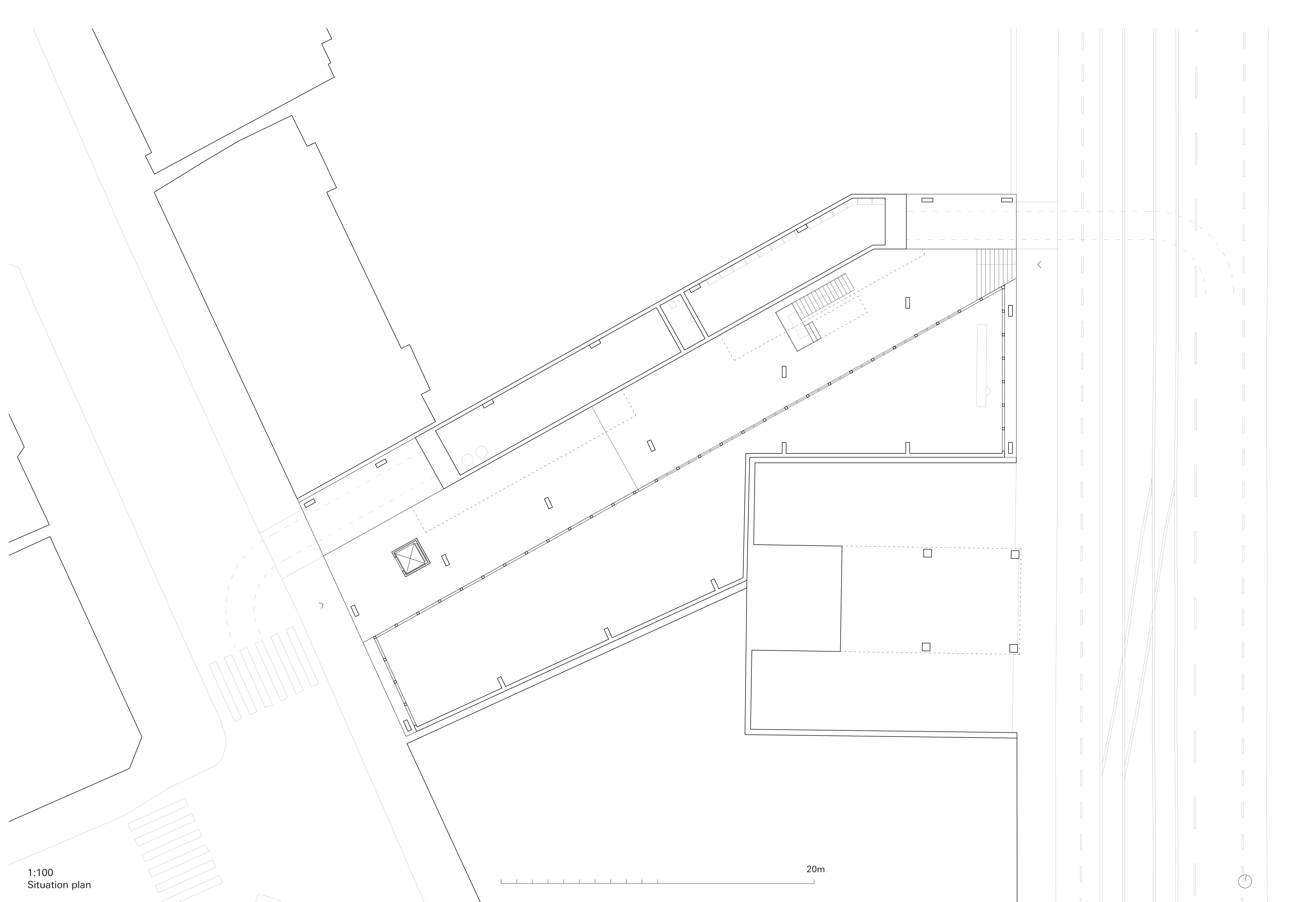


1:5000
Bergen - Satellite photo



1:1000
Satellite photo

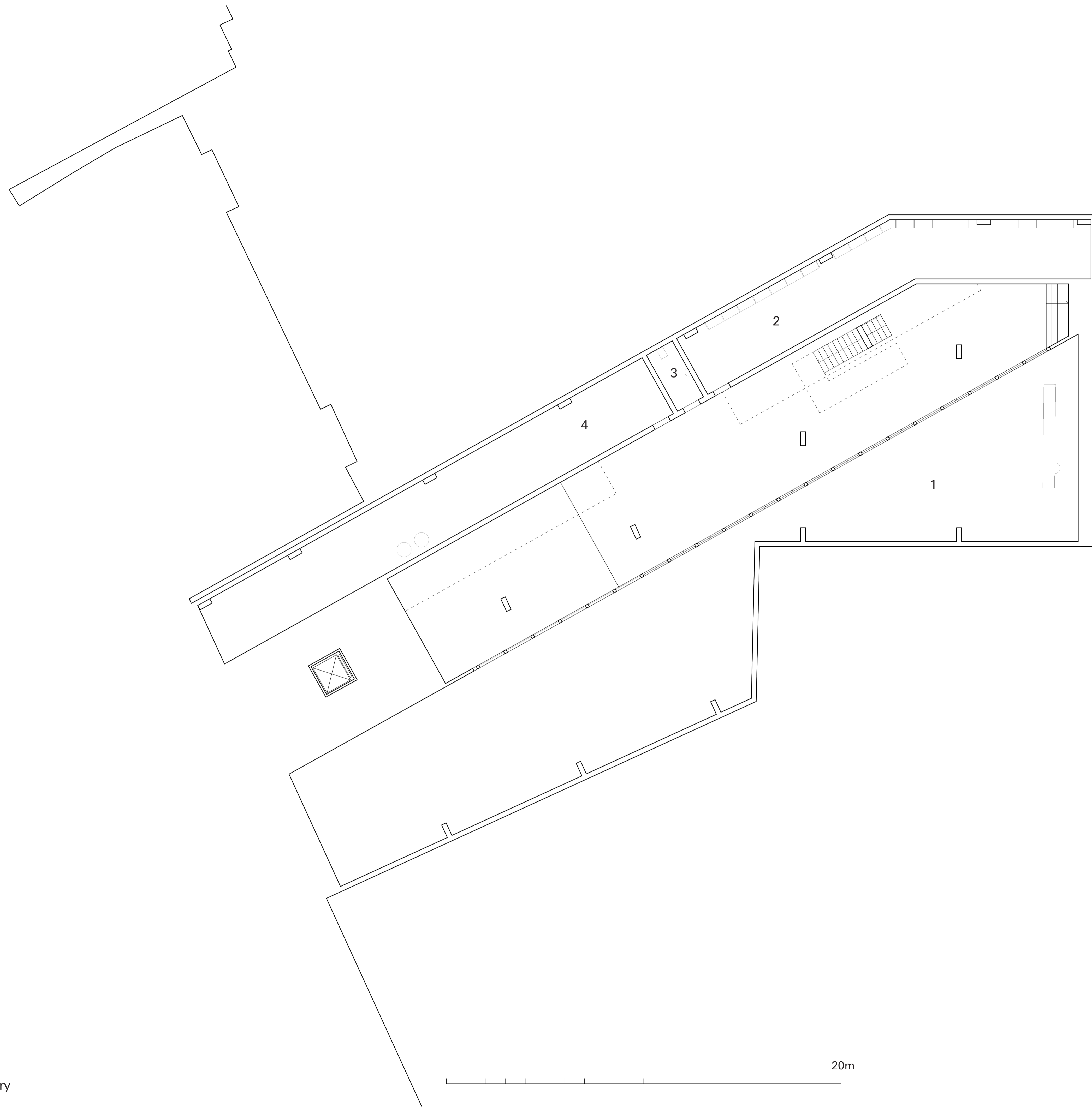
200m



1:100
Situation plan

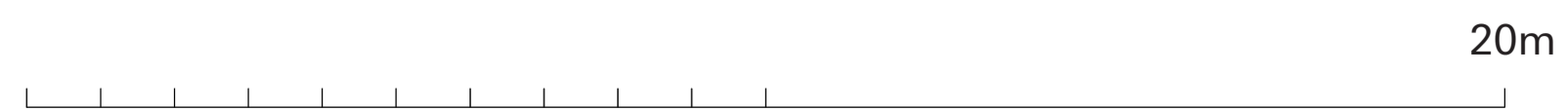
20m





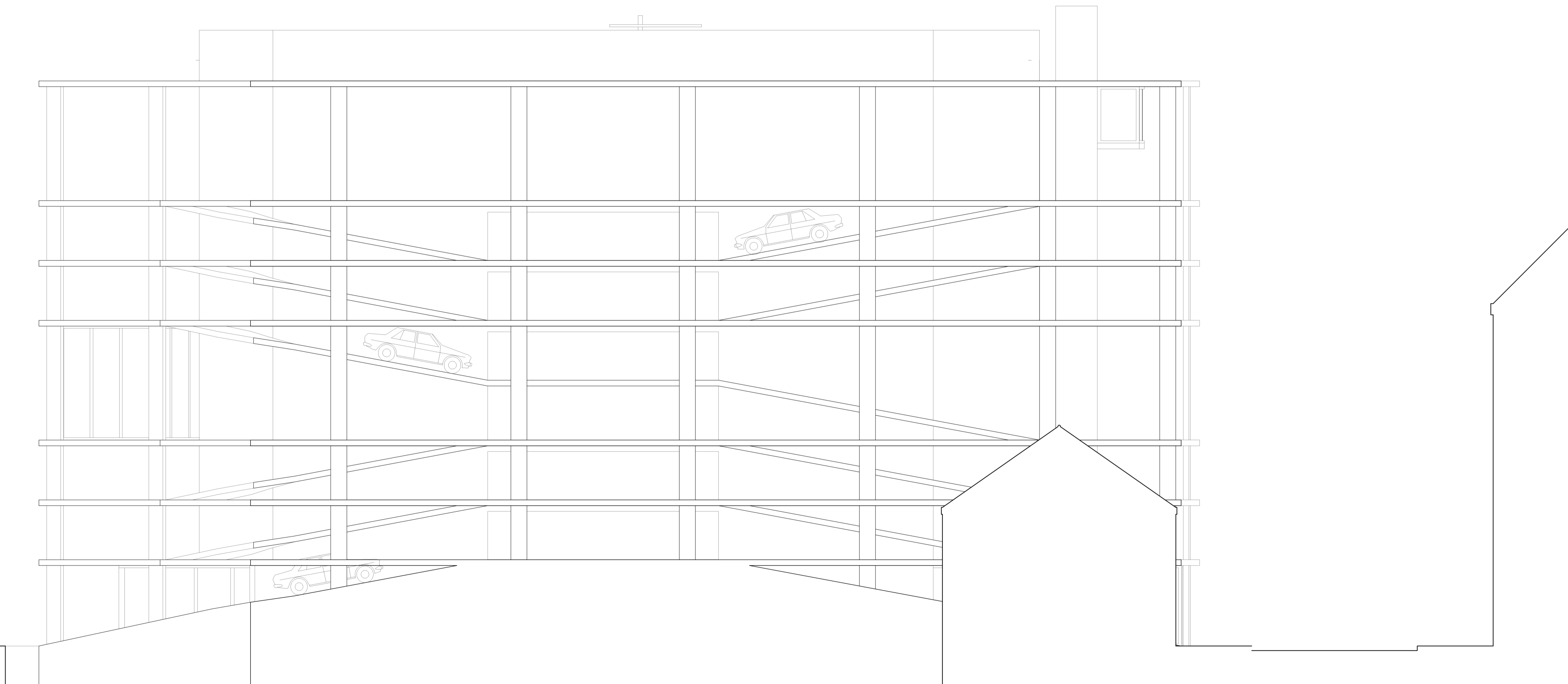
- 1 Gallery space
- 2 Storage
- 3 WC
- 4 Utilities

1:100
-1.7m below street - Gallery



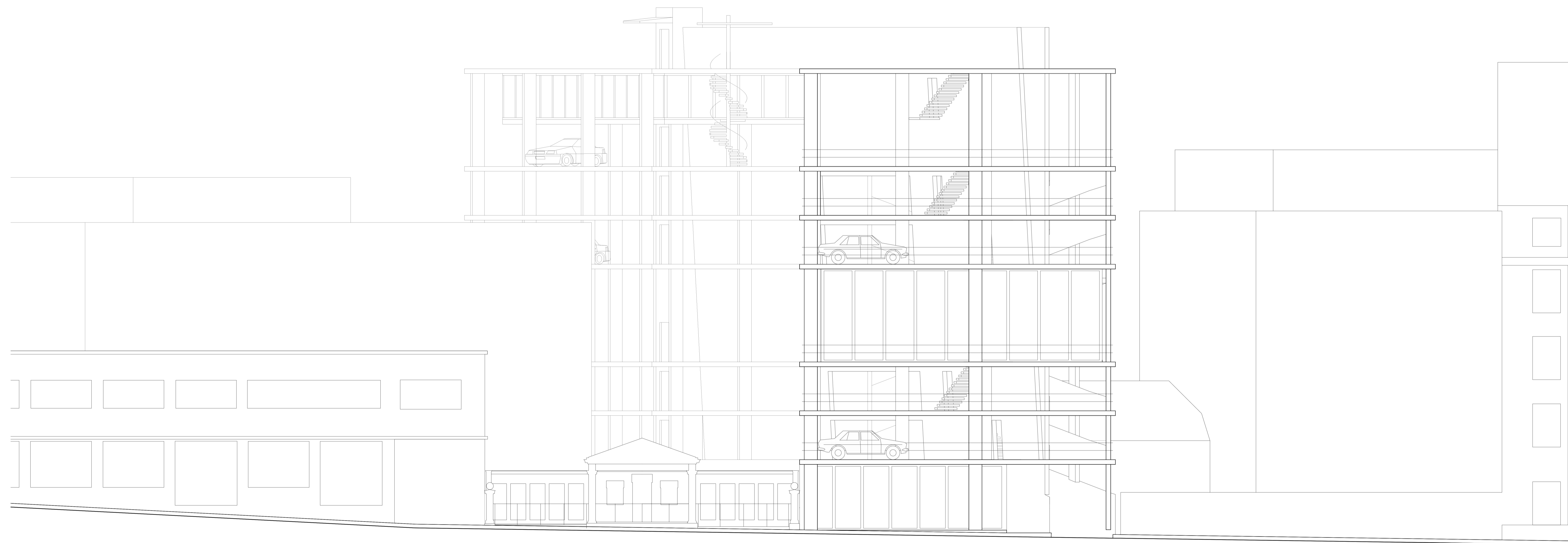


Ground floor, below street
Gallery



1:100
North facade towards courtyard



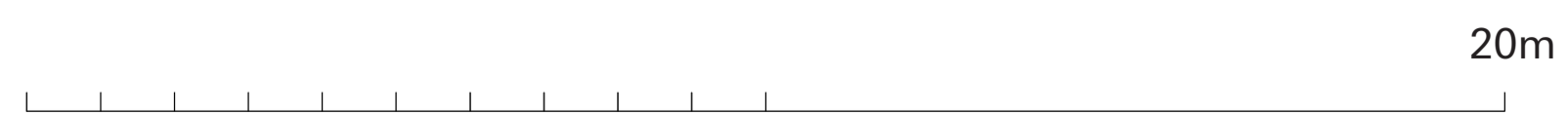


1:100
East facade towards Lars Hilles gate



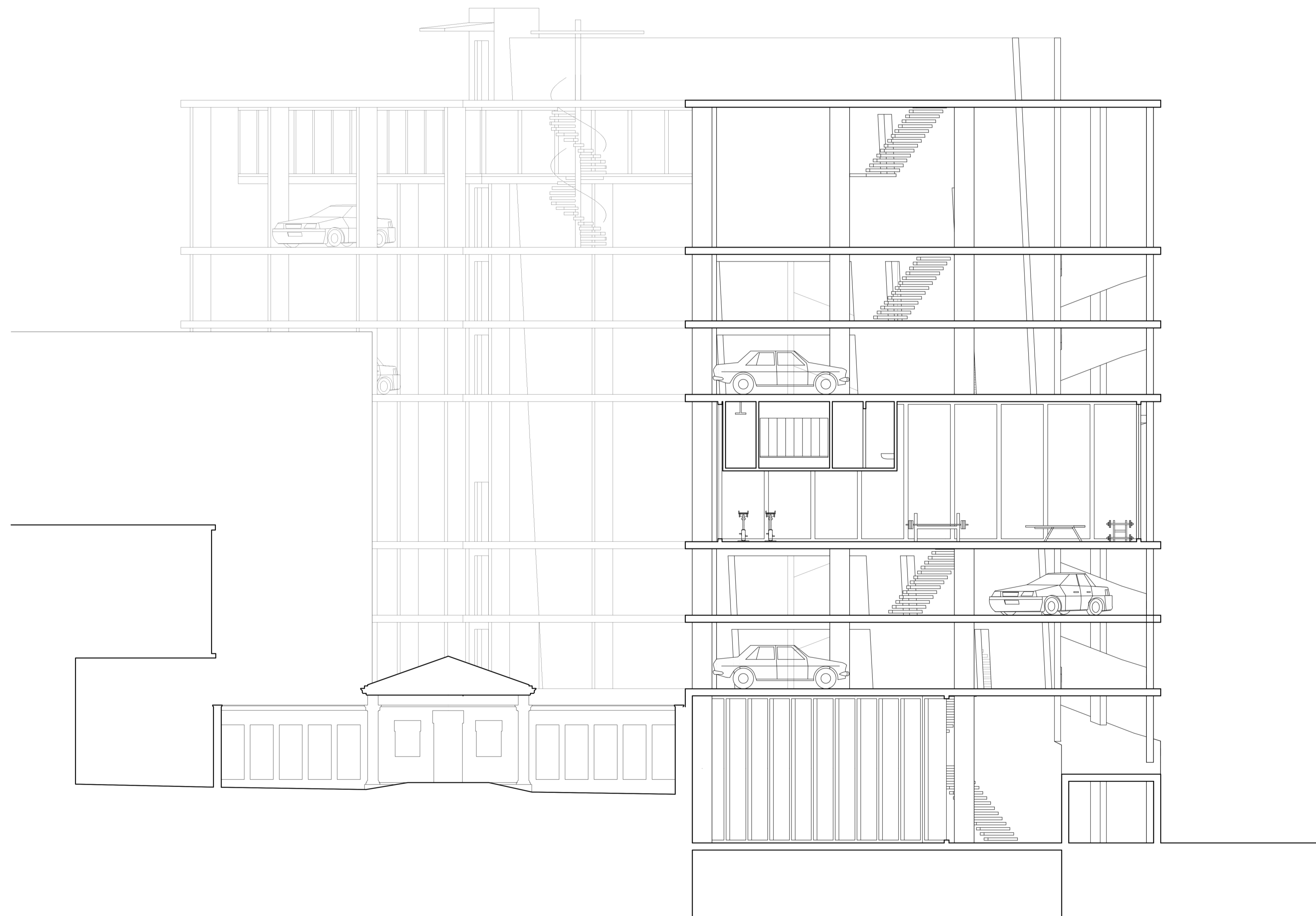


1:100
1st floor parking



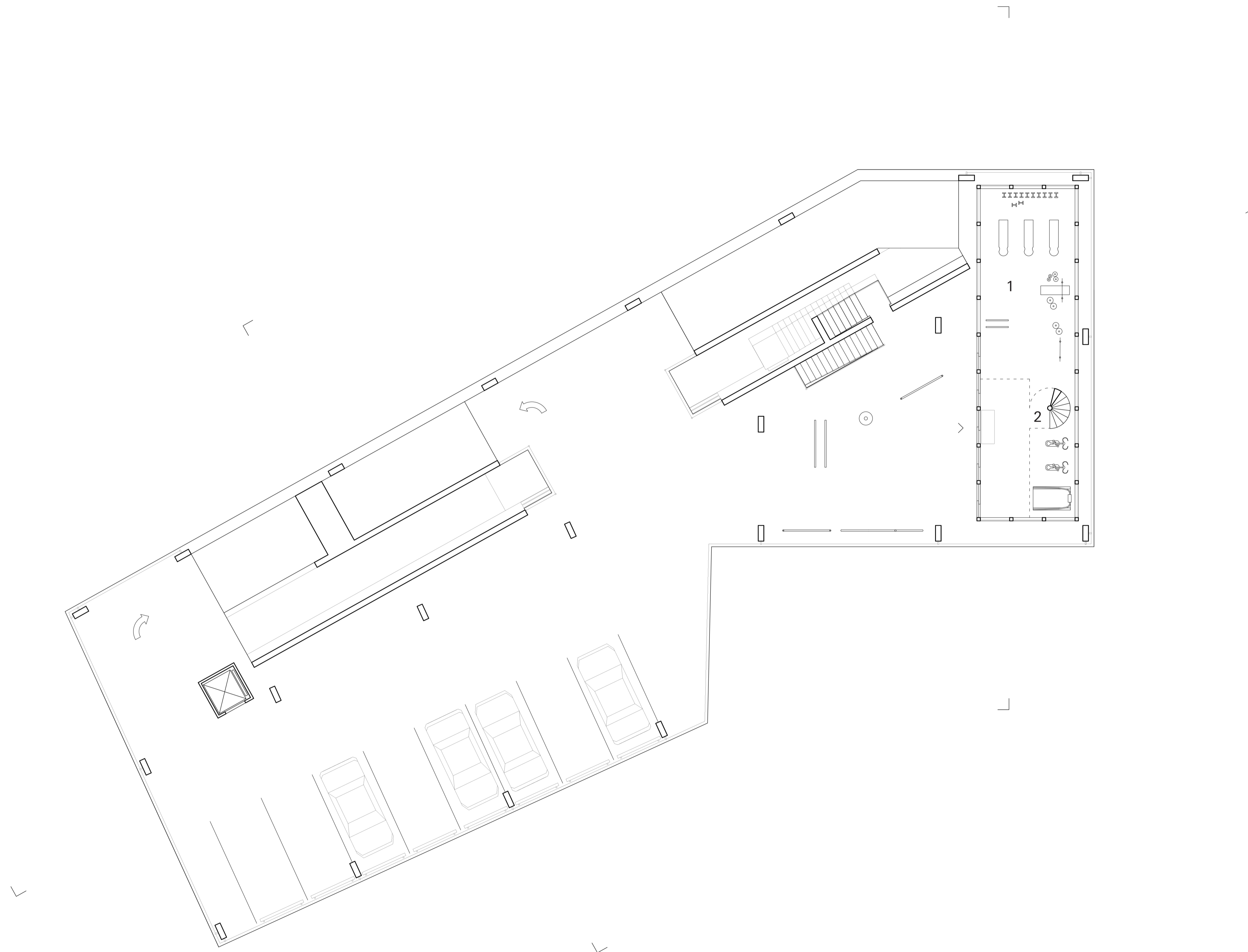


3rd floor
Parking & gym



1:100
East cross section





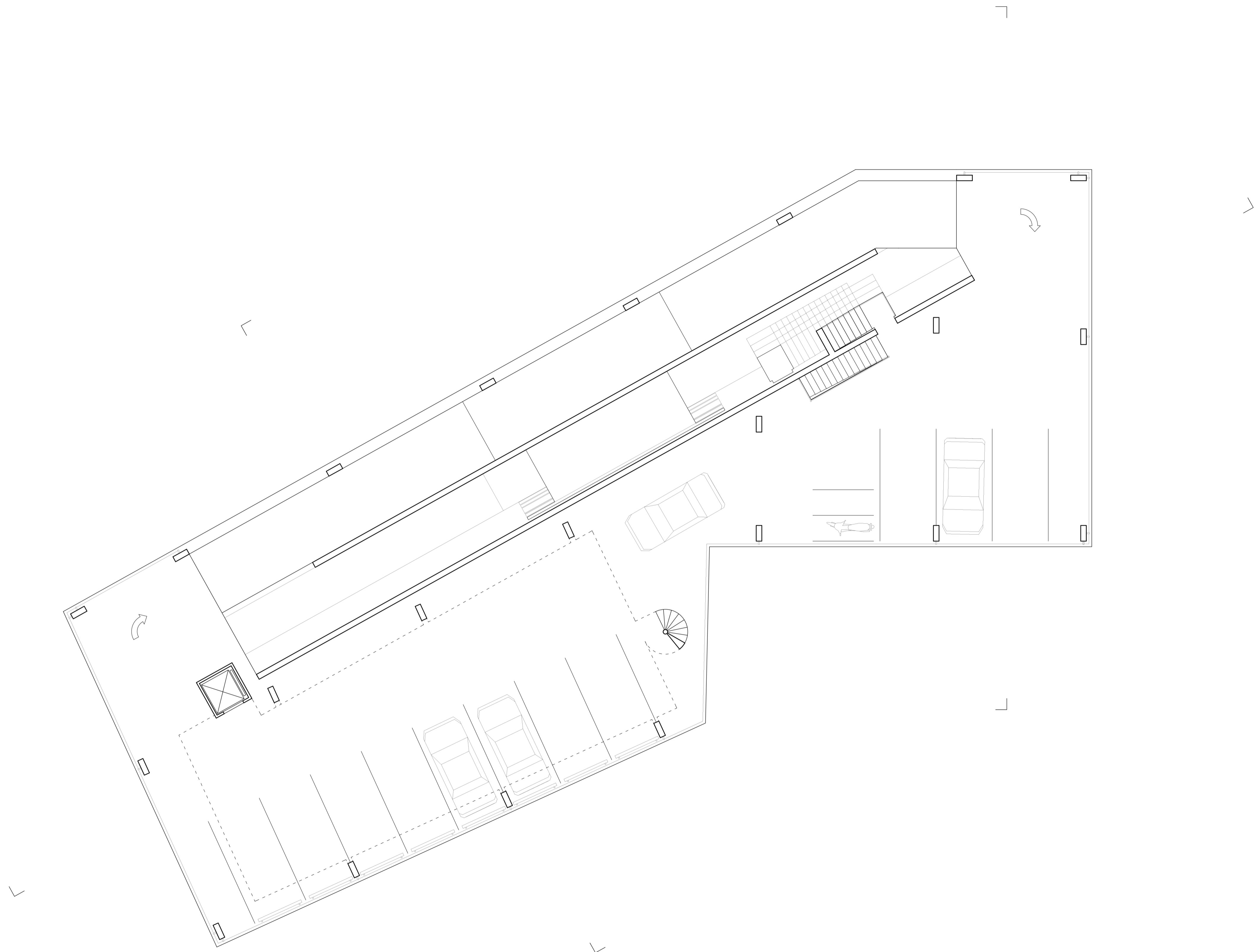
1 Gym
2 Access to wardrobe

1:100
3rd floor - parking & gym





3rd floor
Parking & gym

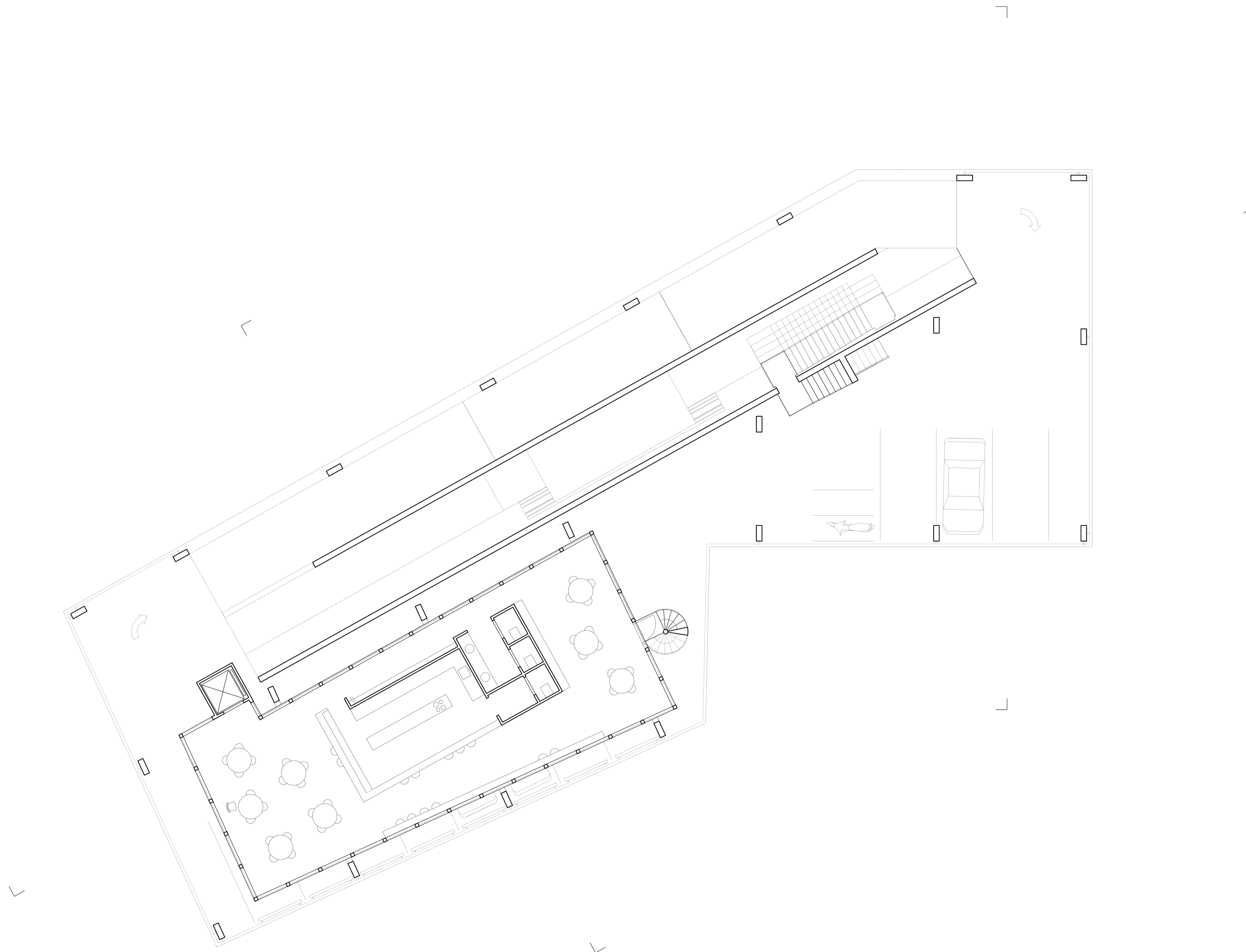


1:100
6th floor - Parking

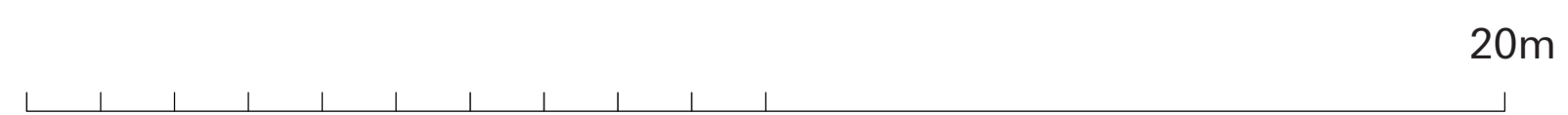


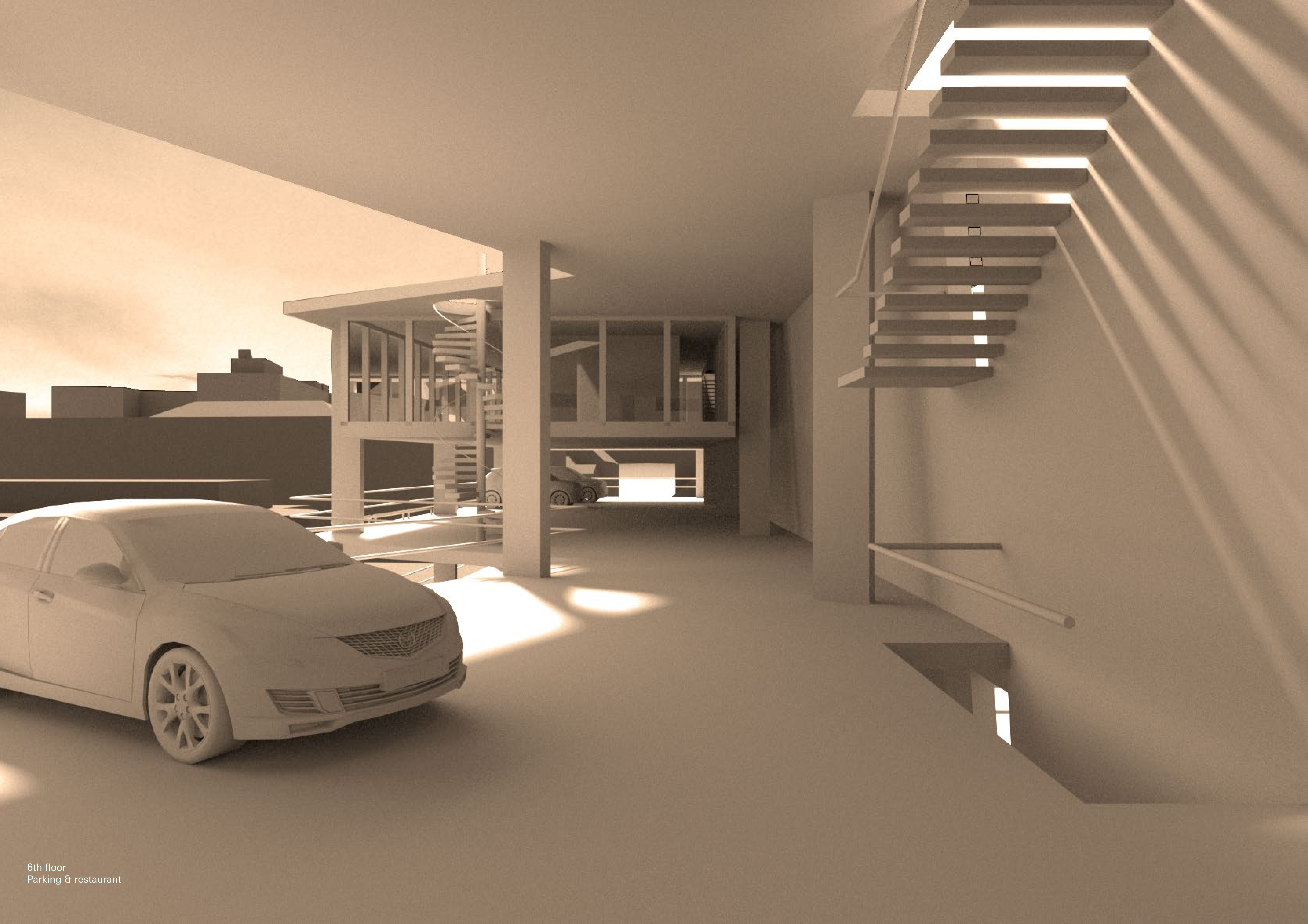


6th floor
Parking

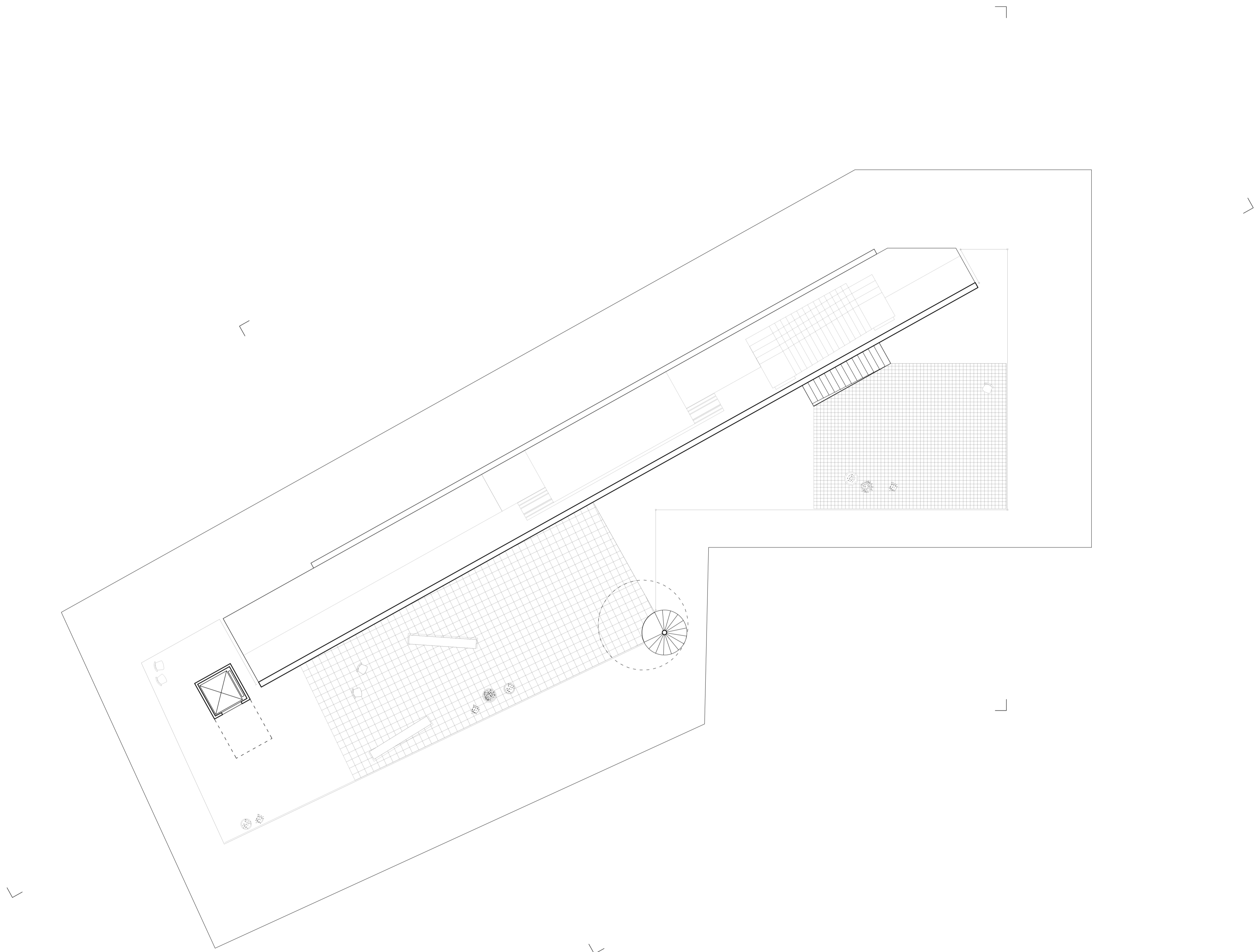


1:100
6.5th floor restaurant

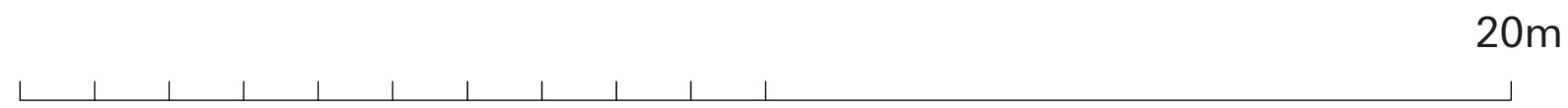


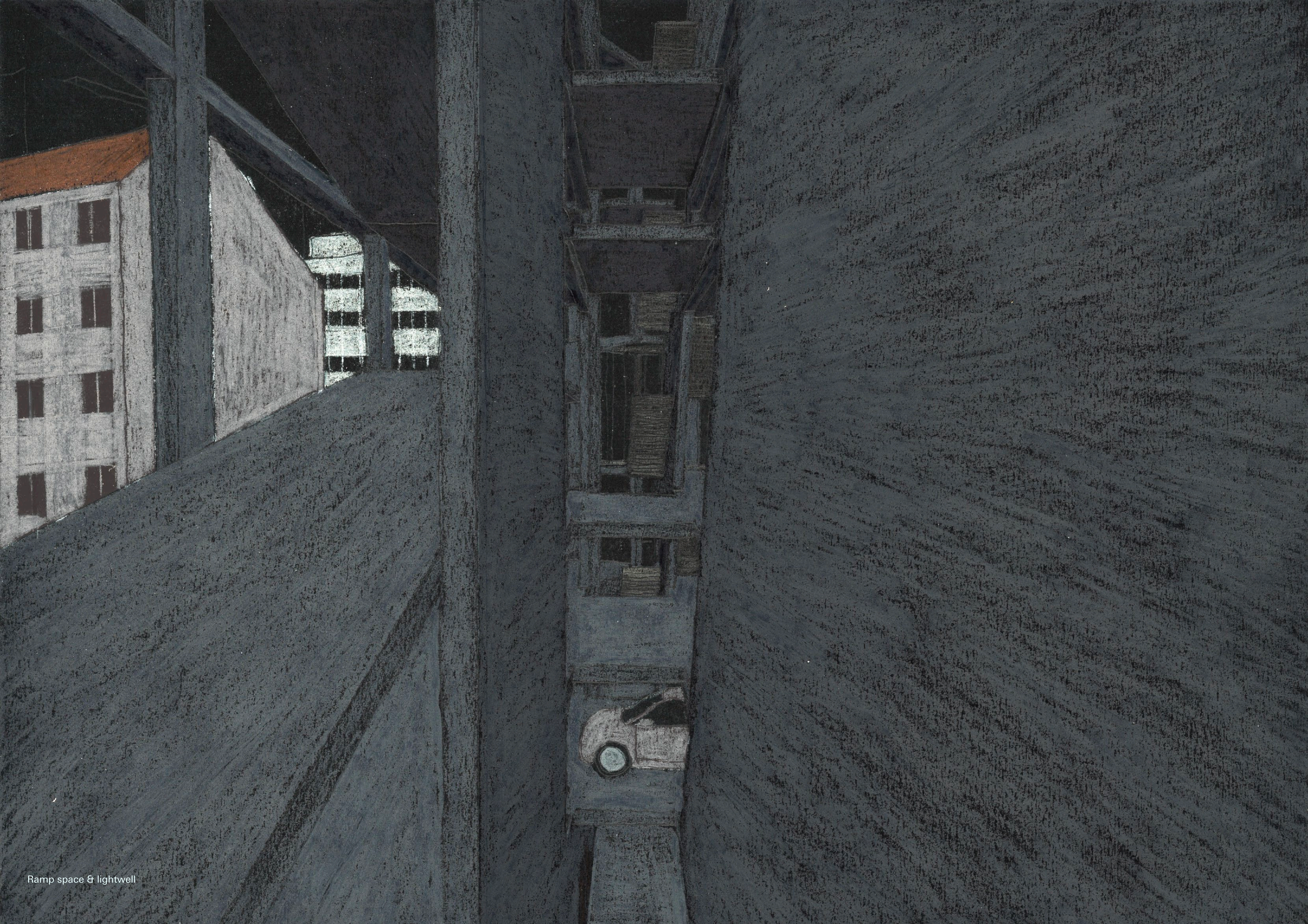


6th floor
Parking & restaurant

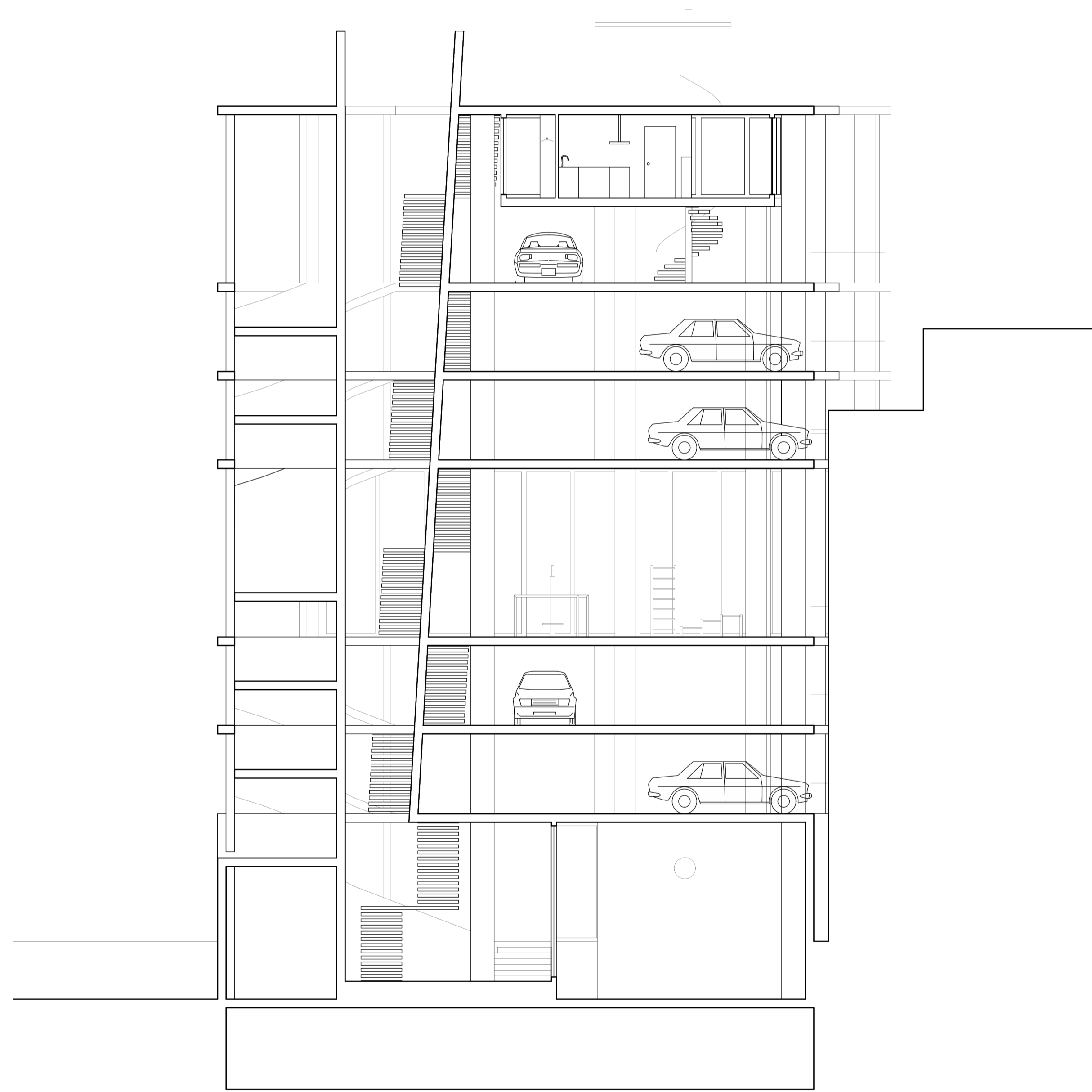


1:100
Roof garden

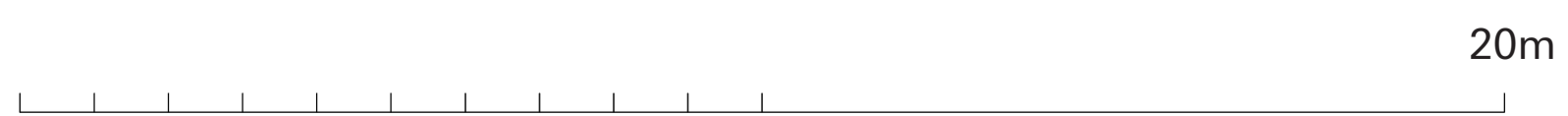


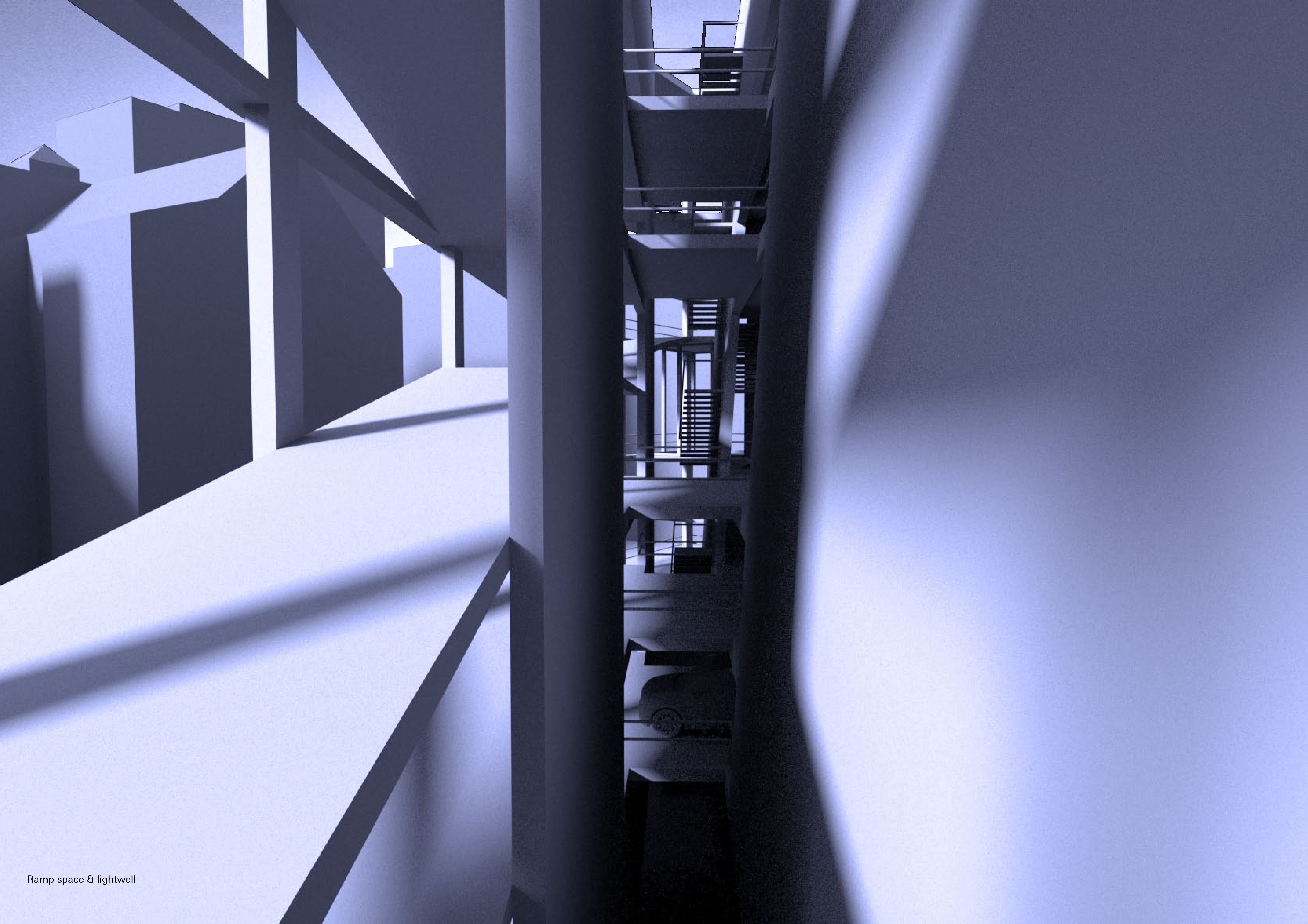


Ramp space & lightwell

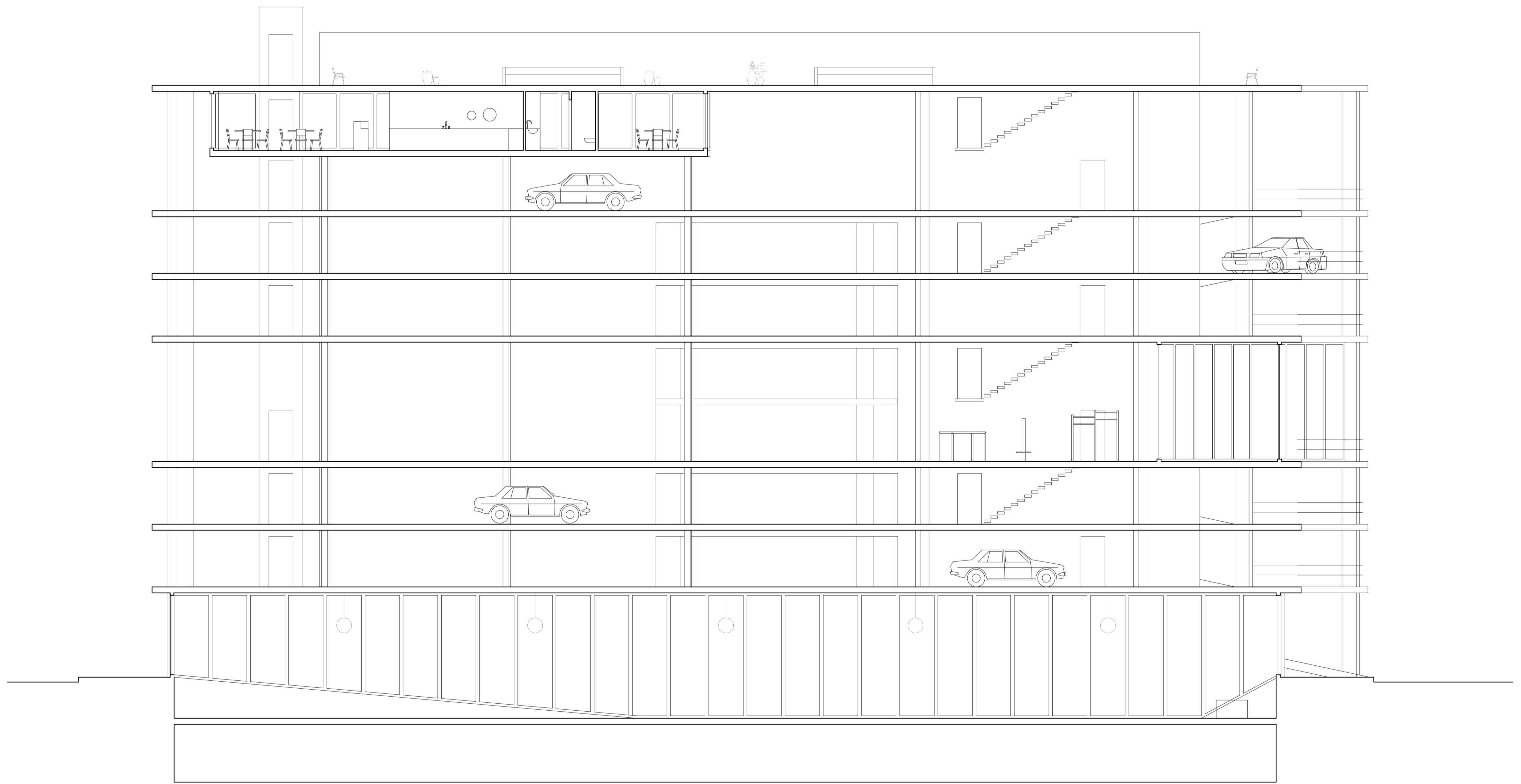


1:100
West cross section

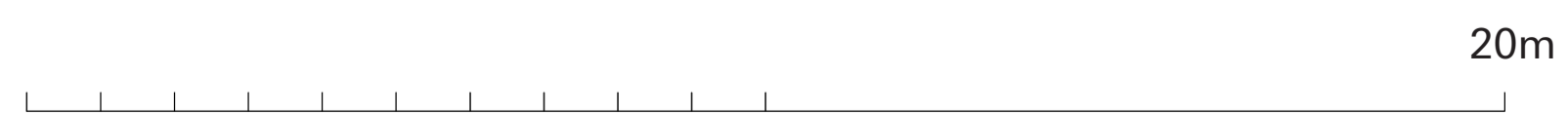


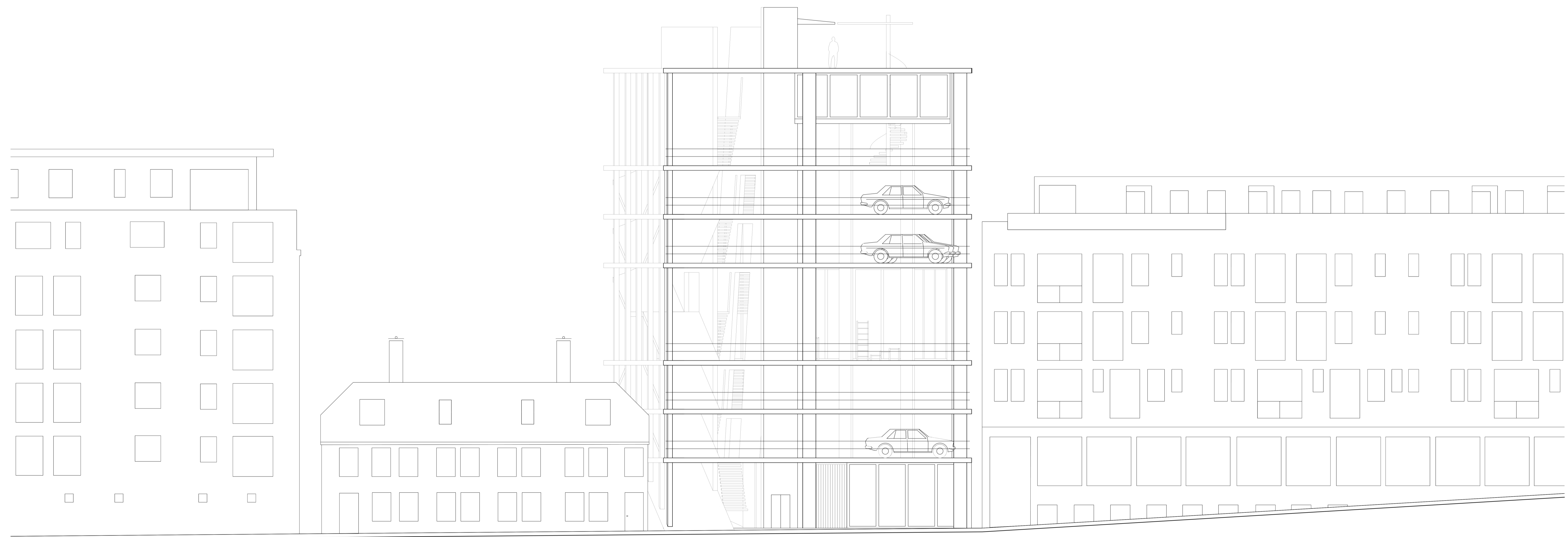


Ramp space & lightwell

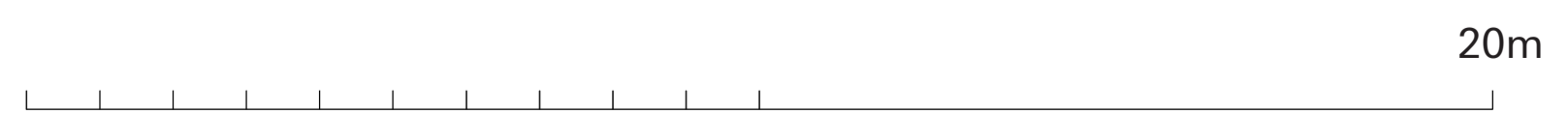


1:100
Longitudal section





1:100
West facade towards Nygårdsgaten





View from Nygårdsgaten