



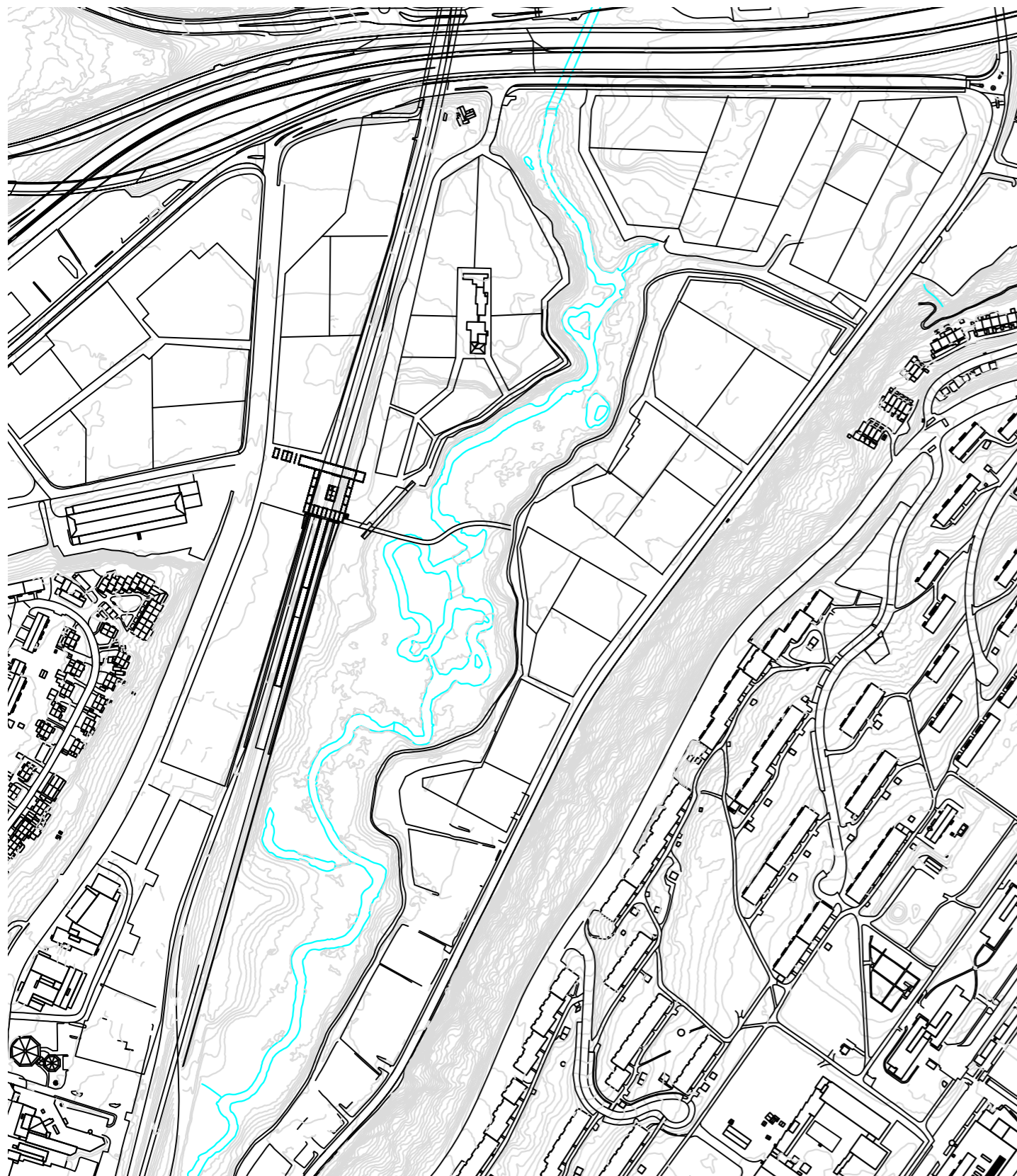


SITE LOCATION 1 RING: 1 KM

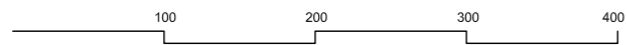


-  Industry and warehouse areas
-  Alna river with surrounding wetland and
-  Train tracks
-  E6
- 1 Smalvollveien
- 2 Ole Deviks vei

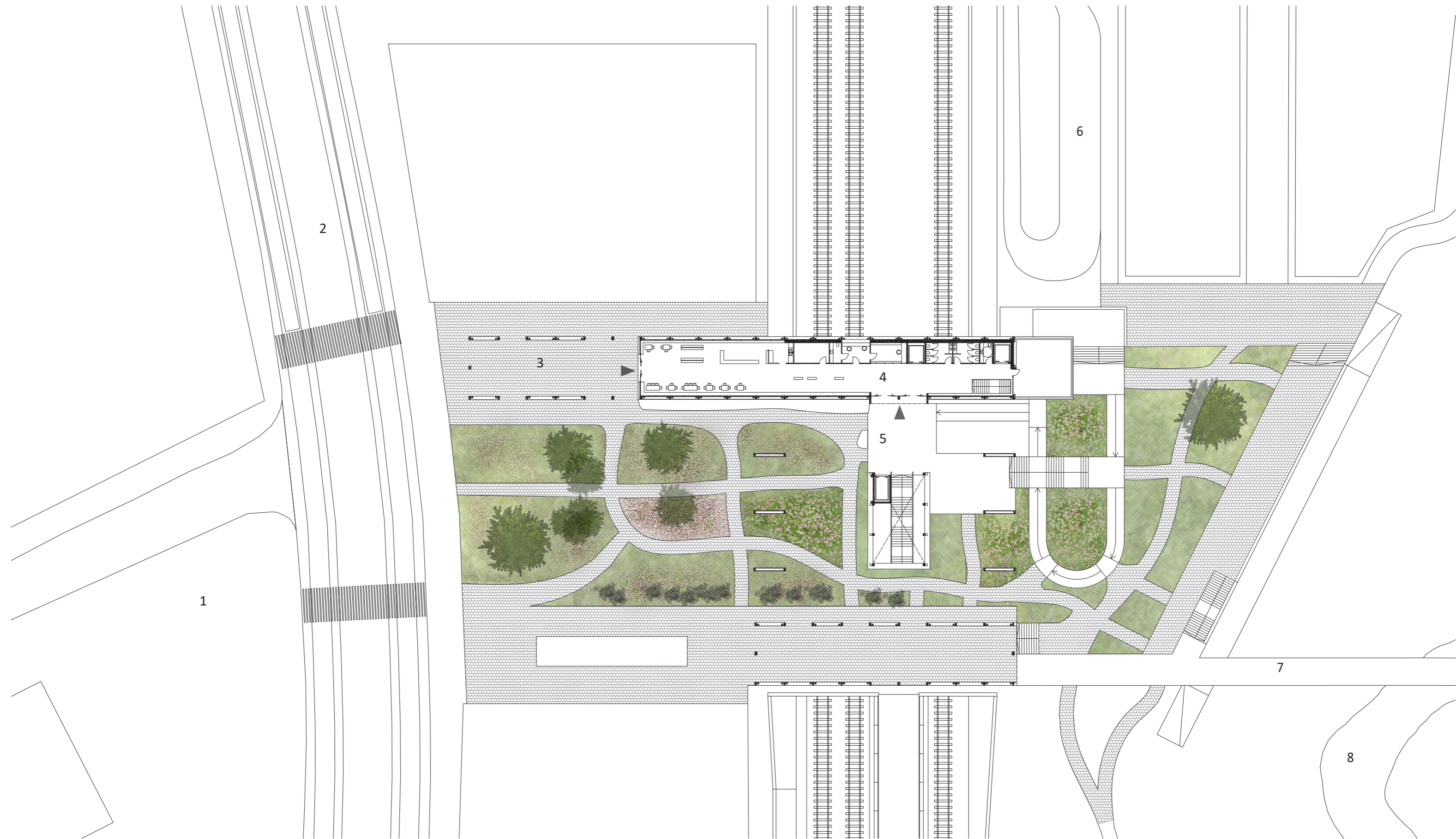


PLAN SITUATION

1 : 5000



PICTURES FROM SITE

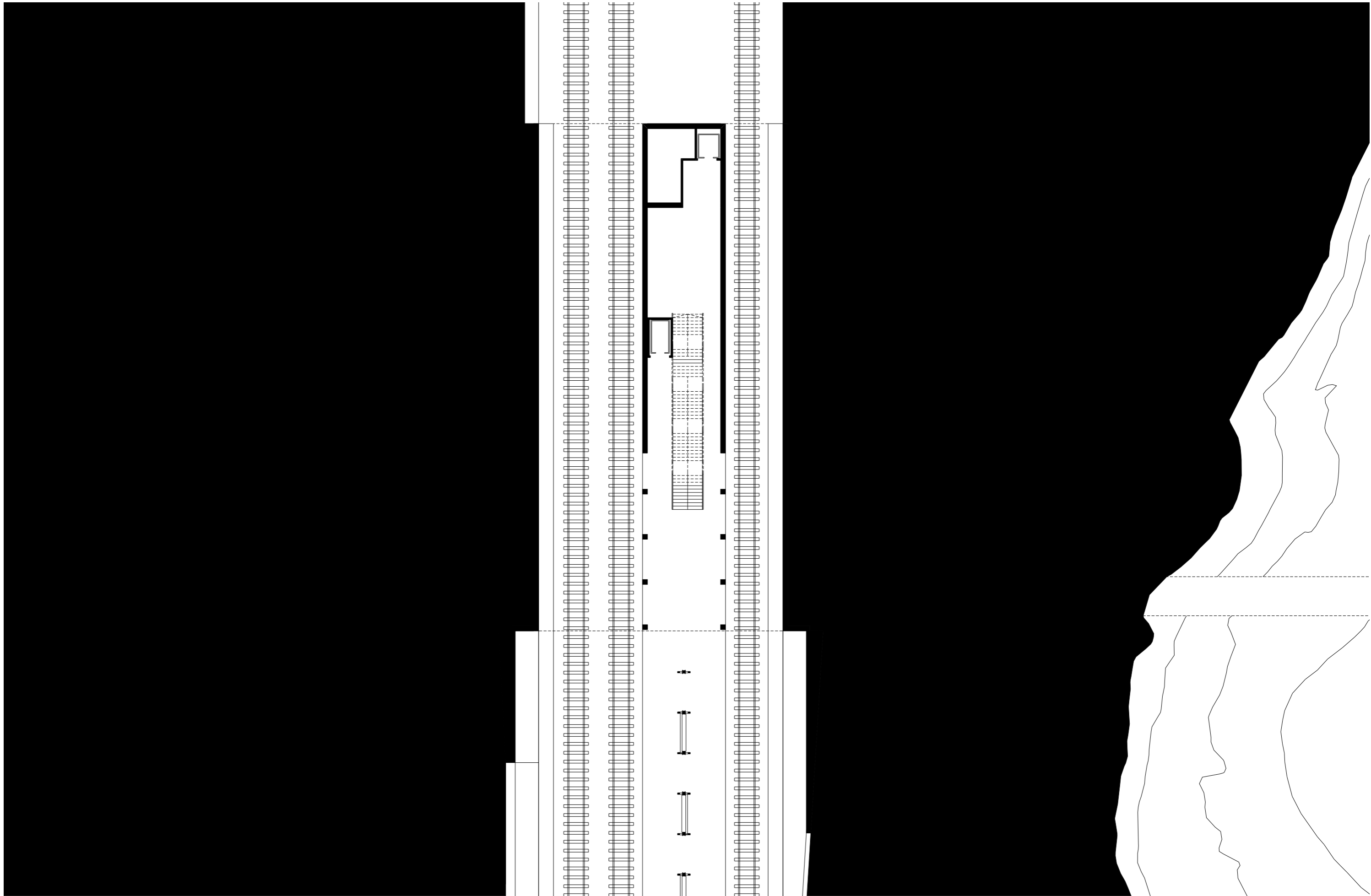


1. culture house plaza 2. tram stop 3. bike parking 4. station building 5. stair and elevator shaft to platform 6. short term car parking 7. bridge connecting the east and west side of Breivoll 8. alna river

PLAN

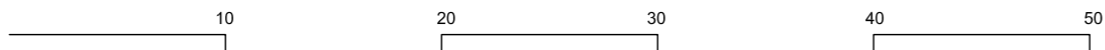
1:500

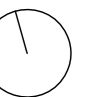
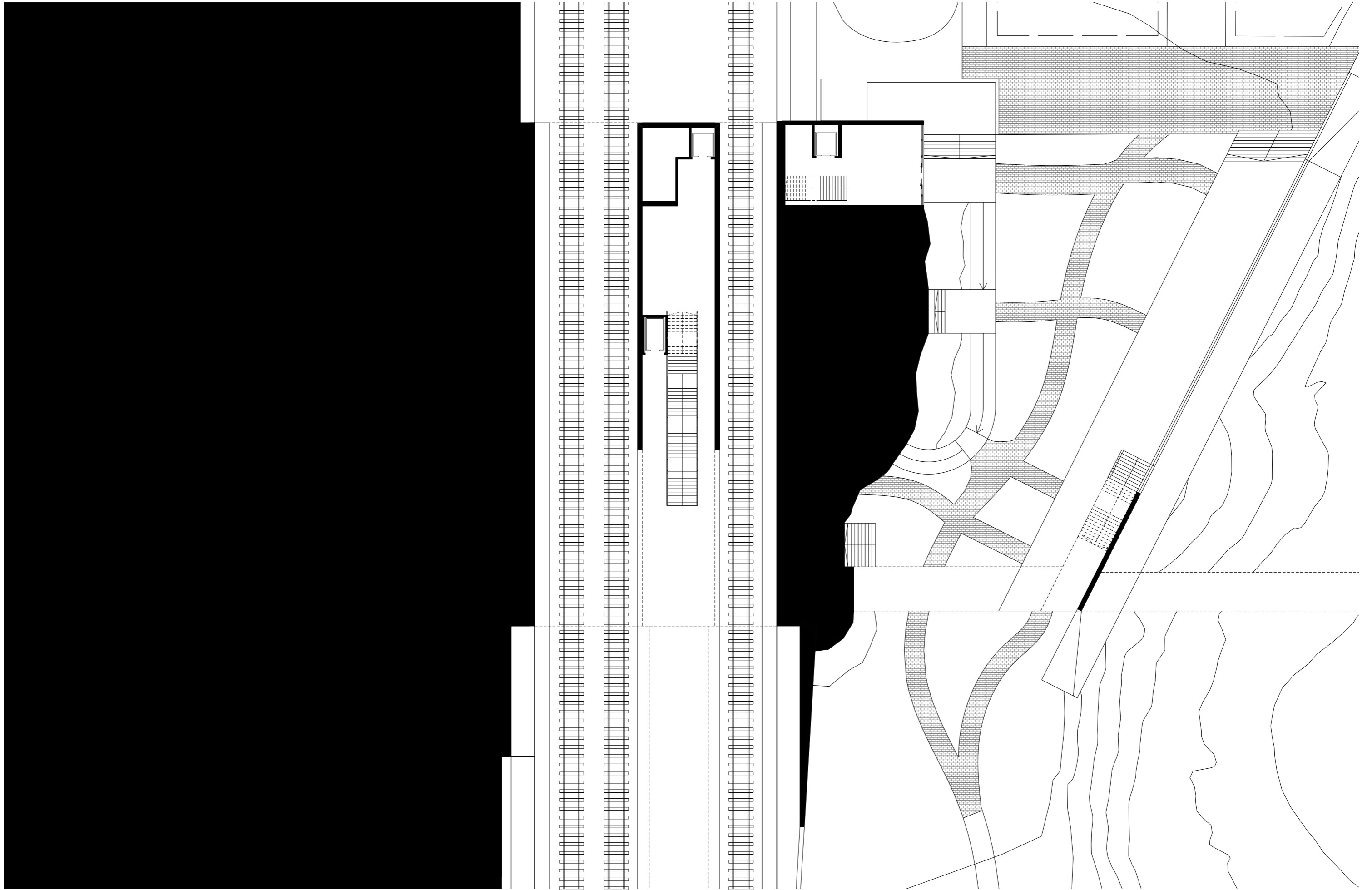


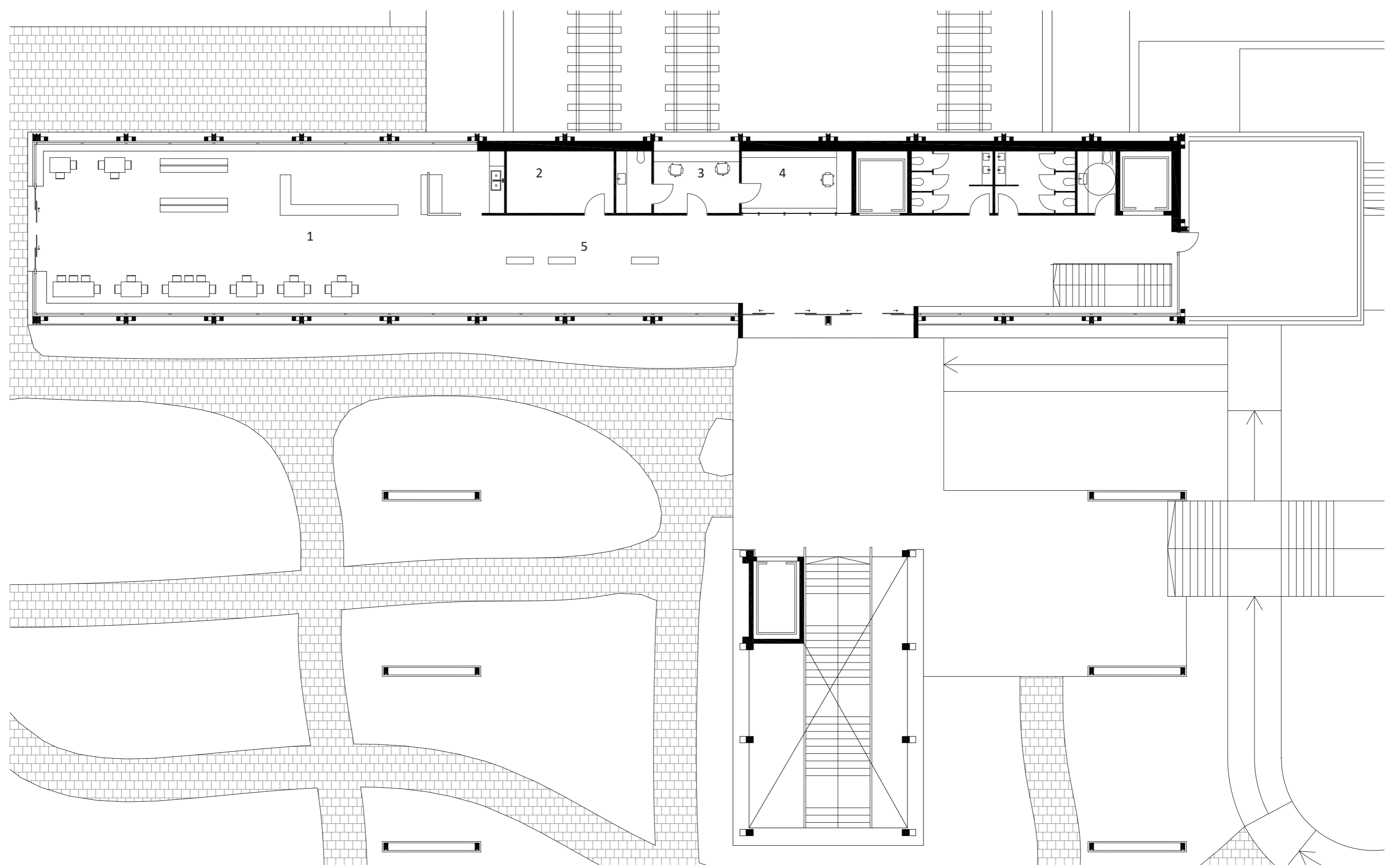


PLAN +3

1:350



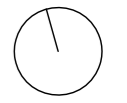
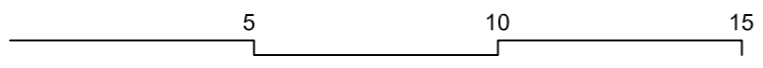




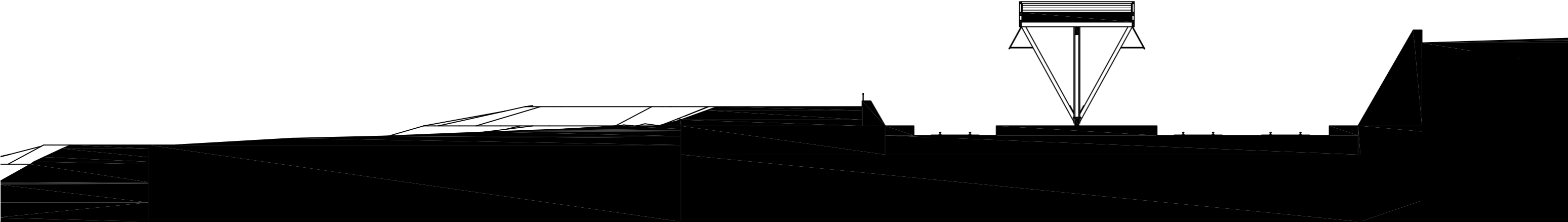
1. café 2. technical space and storage 3. staff room 4. service and ticket booth 5. ticket automats

PLAN STATION BUILDING

1:150

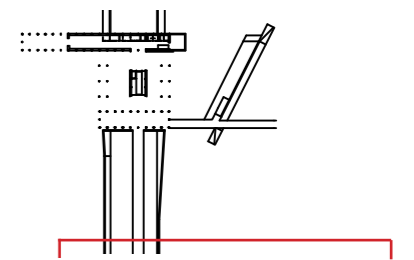


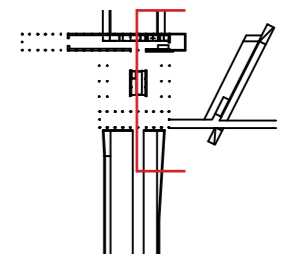
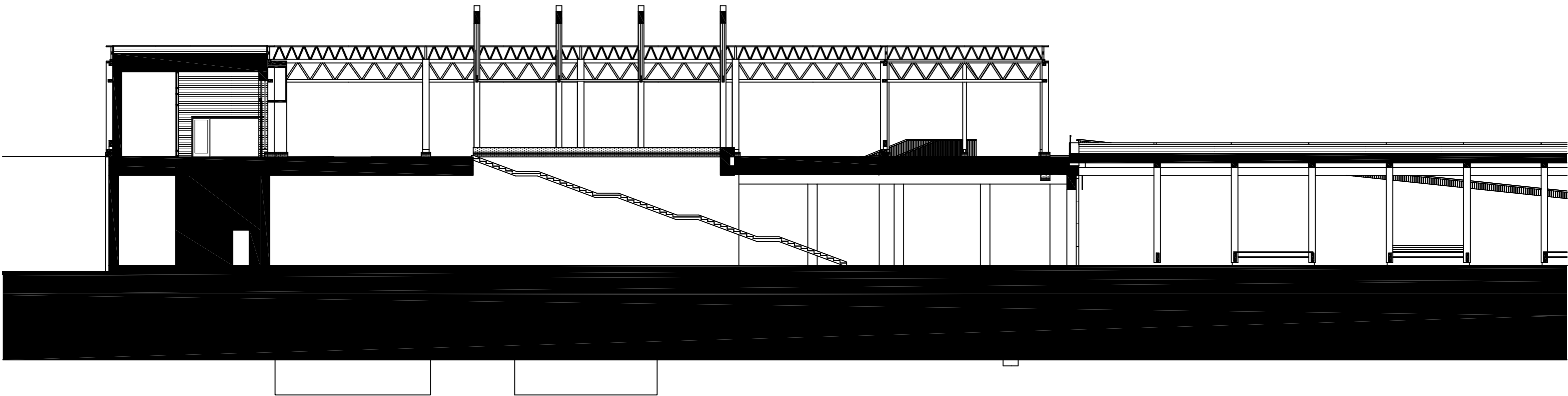




SECTION C PLATFORM AREA

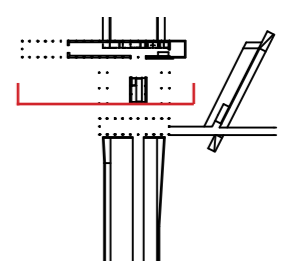
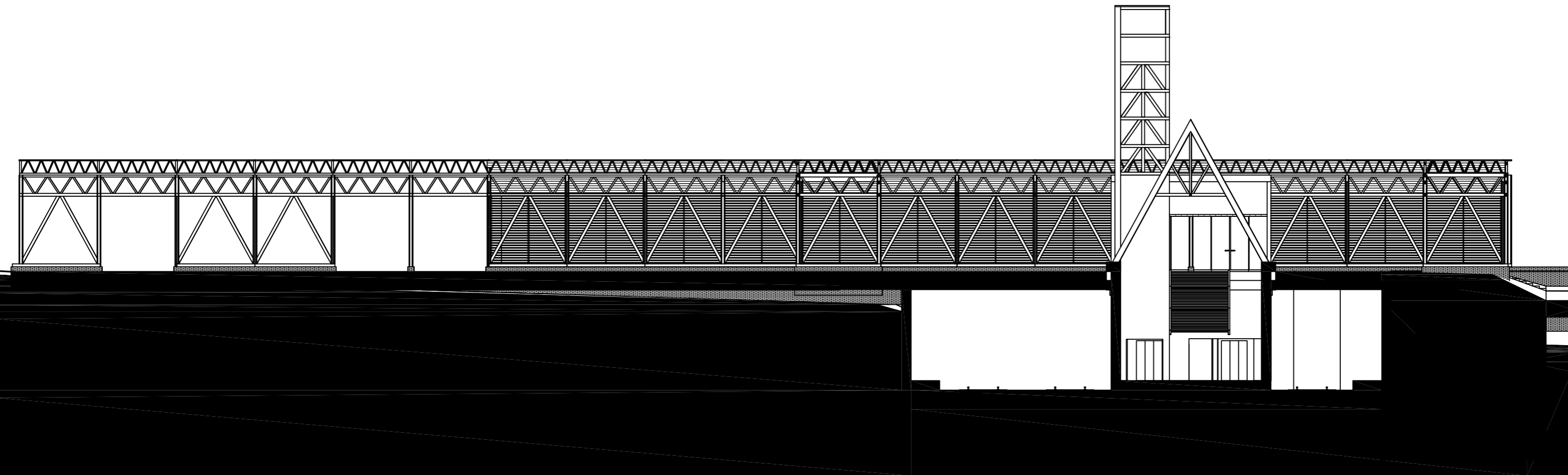
1:200





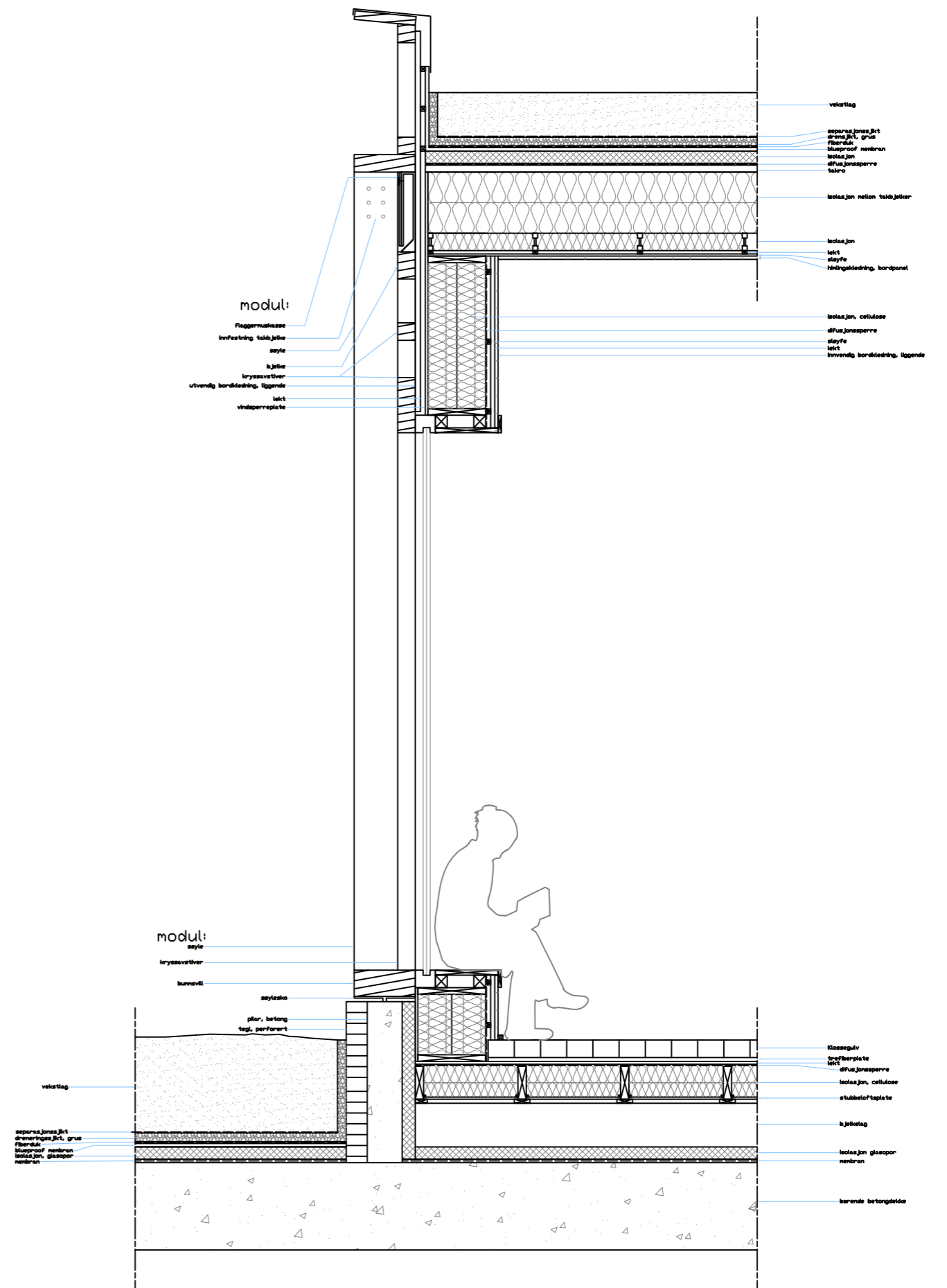
SECTION A

1:200



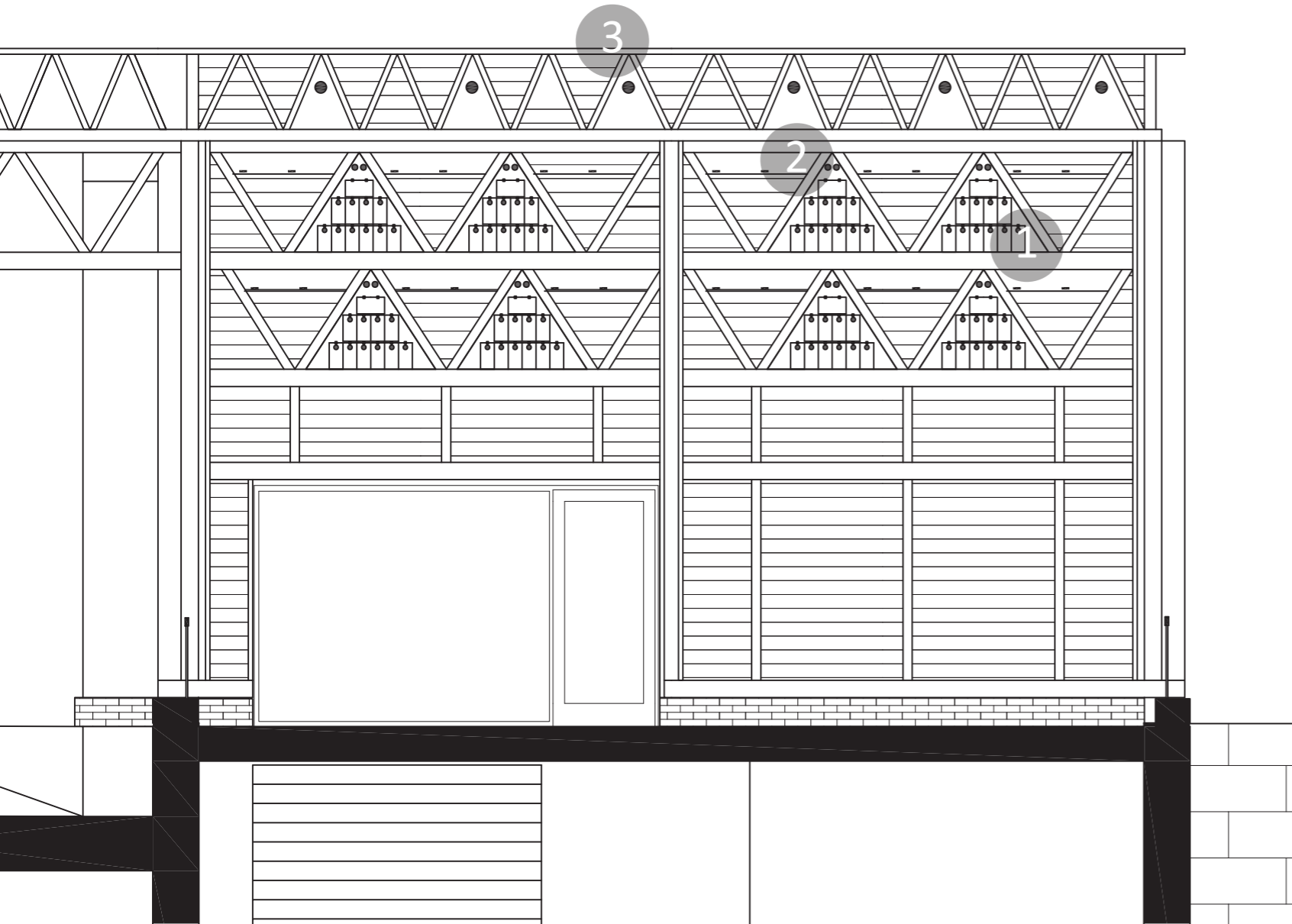
SECTION B

1:200



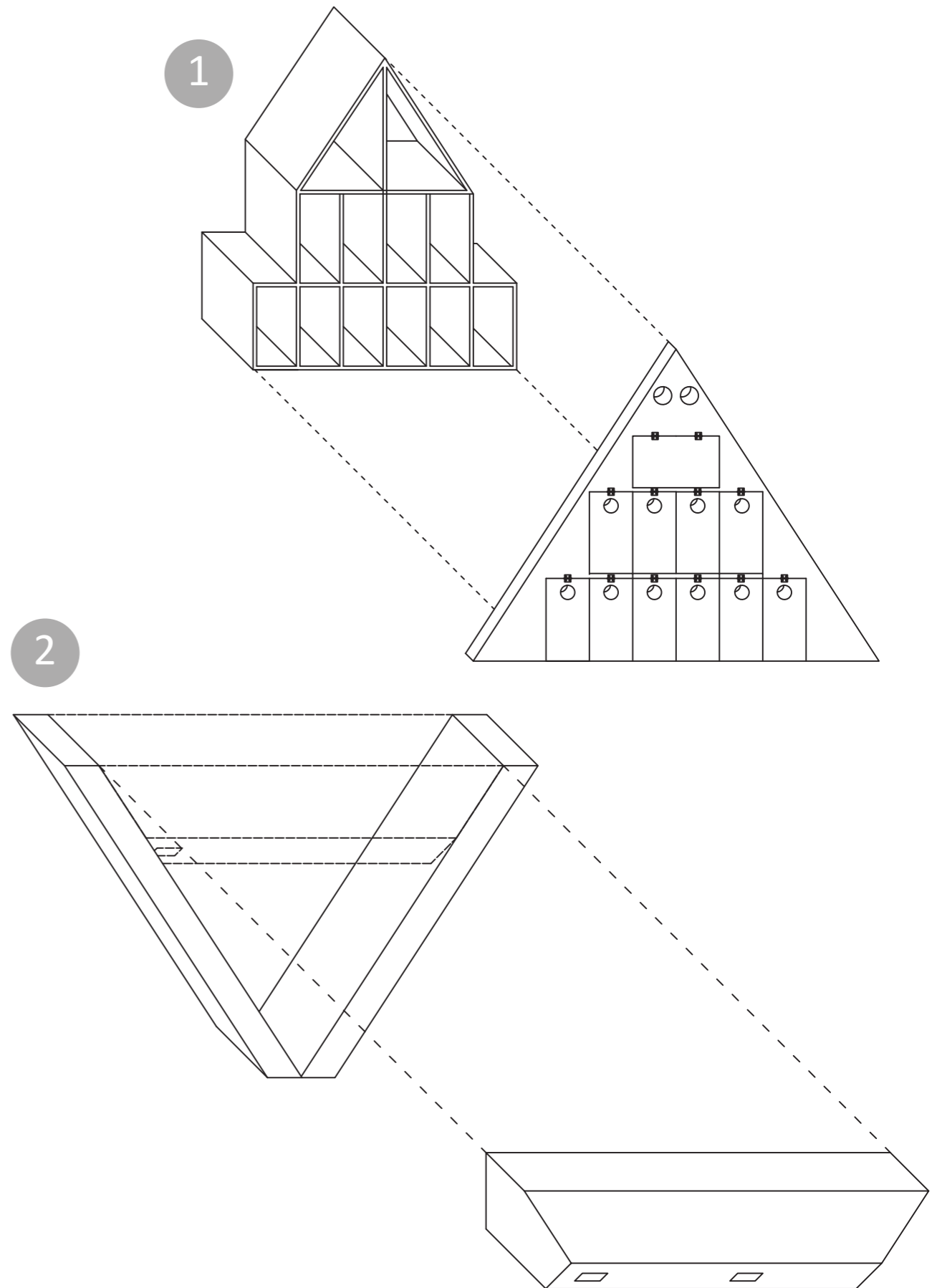
SECTION FACADE

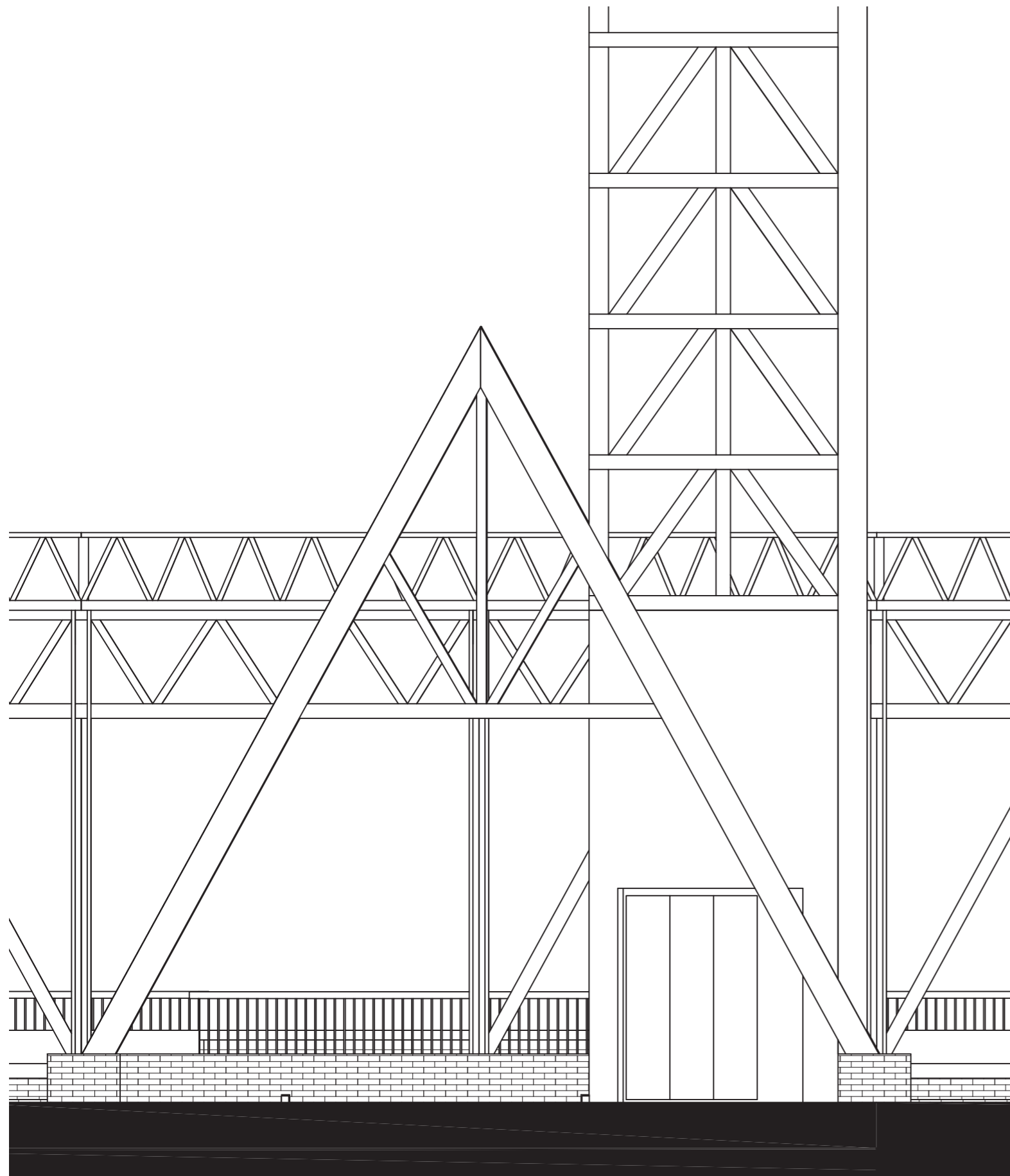
1:30



The eastern facing facade has built in bird dwellings for different types of birds.

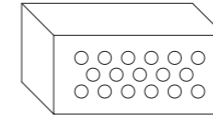
- 1. Small birds, preliminary sparrows with two compartments on top for starlings
- 2. Swift
- 3. Common goldeneye



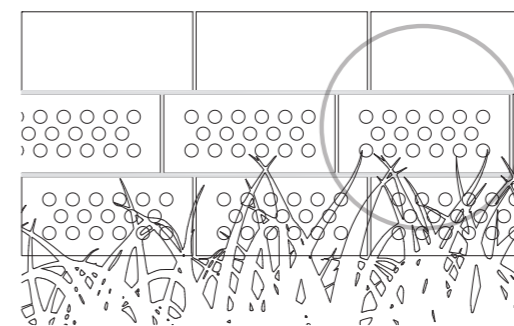
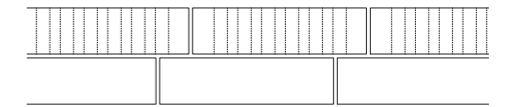
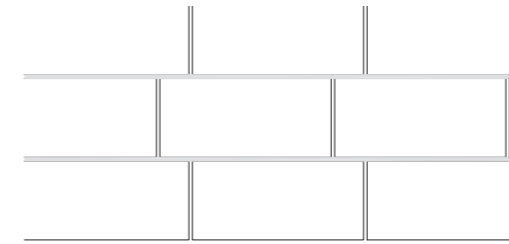


STAIRS DOWN TO PLATFORM

1:50



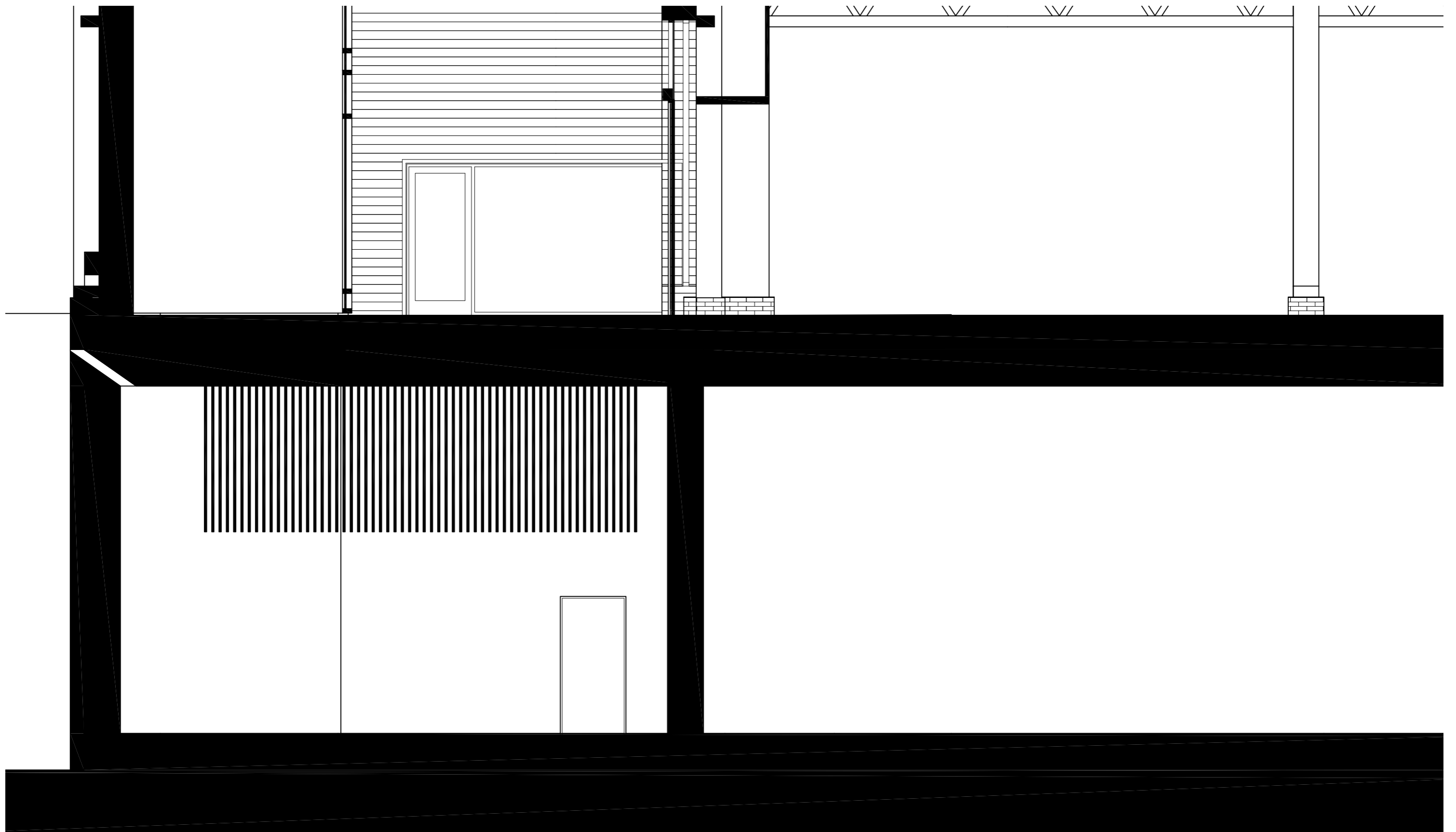
The Bricks covering the main structures foundation is laid with small gaps in between each brick, creating cavities for insects, butterflies and the like.



The bricks closest to the ground has the perforated side facing out with straw and bamboo stuck in the openings, creating an optimal space for insects

BRICK INSECT DWELLINGS

1:50



The unused space underneath the station building functions as a bat winter dwelling, simulating their preferred cave like environments. They access the space through a narrow slit in the wall. The large room has mounted boards to accommodate the bats' need for tight spaces.

