



memorial garden

a path for reminiscence

introduction

Memorial Garden is a representation of an informal funeral space in confrontation with the forces of nature, staged in a harsh, steep landscape on the island of Lofoten, overlooking the North Sea. Architecturally, it is a ritual “life and death” passage, imagined around the idea of composition of architectonic thresholds, physical and symbolic.

Threshold space can be understood in many ways in the project. Basically, “it is a matter of a connection between a door and a window”, between in and out. The building becomes the threshold space between the death and life, between the entrance into the dark and the view out.

threshold as space

Threshold is a place at which something starts, and something ends.

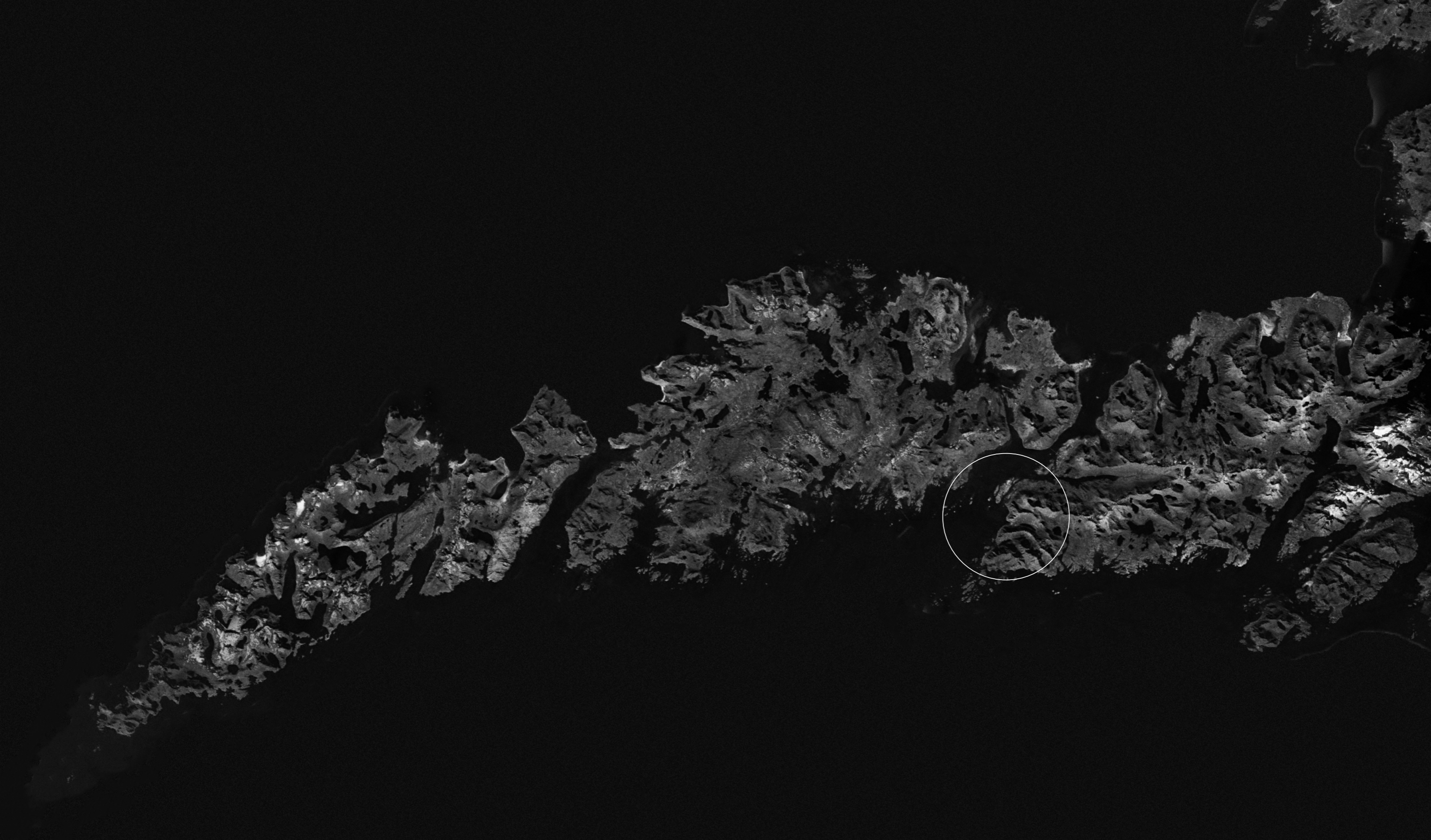
It is two things at the same time. It is both an ending and a beginning. Spatially it is ambivalent, or clearly directed. The phenomena of thresholds can easily be associated with our presence on earth. Our time being alive can be seen as a threshold space between birth and death, and death can be seen as a threshold between life and afterlife. Despite faith or religion, death is part of presence and presence is something eternal, regardless of the existence of humans or any other species. Even though we inhabit death, this is also part of an absolute order of nature, which remains.

experience

A threshold could be defined as “the ending of one state and the beginning of another”. It expresses tension between two states, which has strong character of temporality. A threshold space is perceived as something in between, and not as an autonomous space or object. Thresholds are not passive spaces and can therefore not exist without movement; they must be experienced with all their spatial relationships.

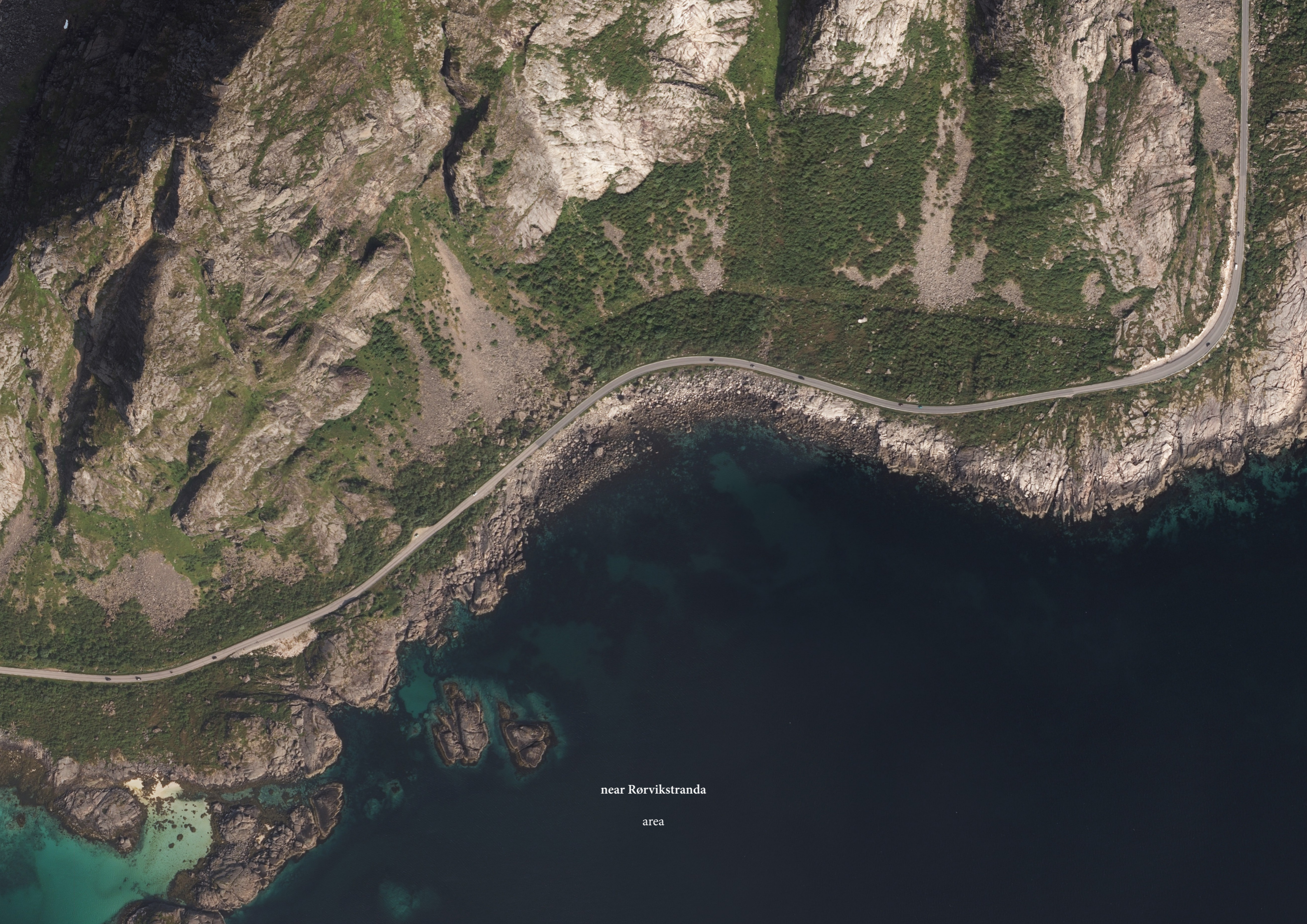
memorial garden

My project is a physically defined presence within our presence, meant for passing and reminiscence. It is about space and time not taken separately, but as One. It is a gathering of life and death, and a conversation between two worlds, worlds of life and afterlife. Basically, Memorial Garden is an architectonic and landscape composition, relating many spaces; circular space as closure and continuity. An absolute space for encasement and closure, yet continuity and infinity. Irregular space as space of human emotion, grief, confusion and reminiscence. Regular space represented by the chapel as the expression of absoluteness of death and presence of the lost - a directional, perfect square.



near Rørvikstranda

Lofoten



near Rørvikstranda

area



memorial garden

roof 1:2000



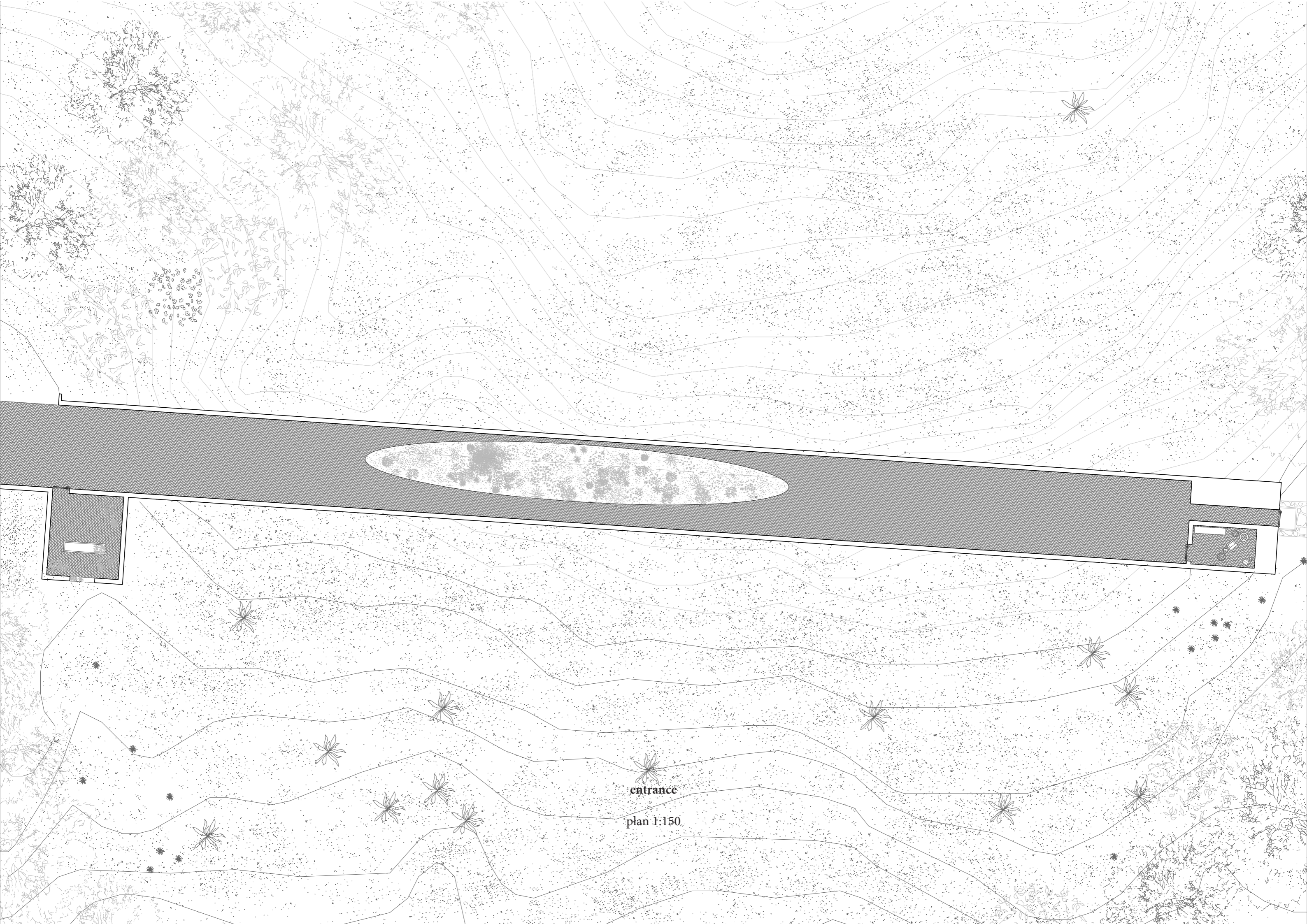
entrance

a small facade can be seen from Rørvik beach in Lofoten. Steps made out of stone connects the parking lot to the only opening of the facade.



entrance

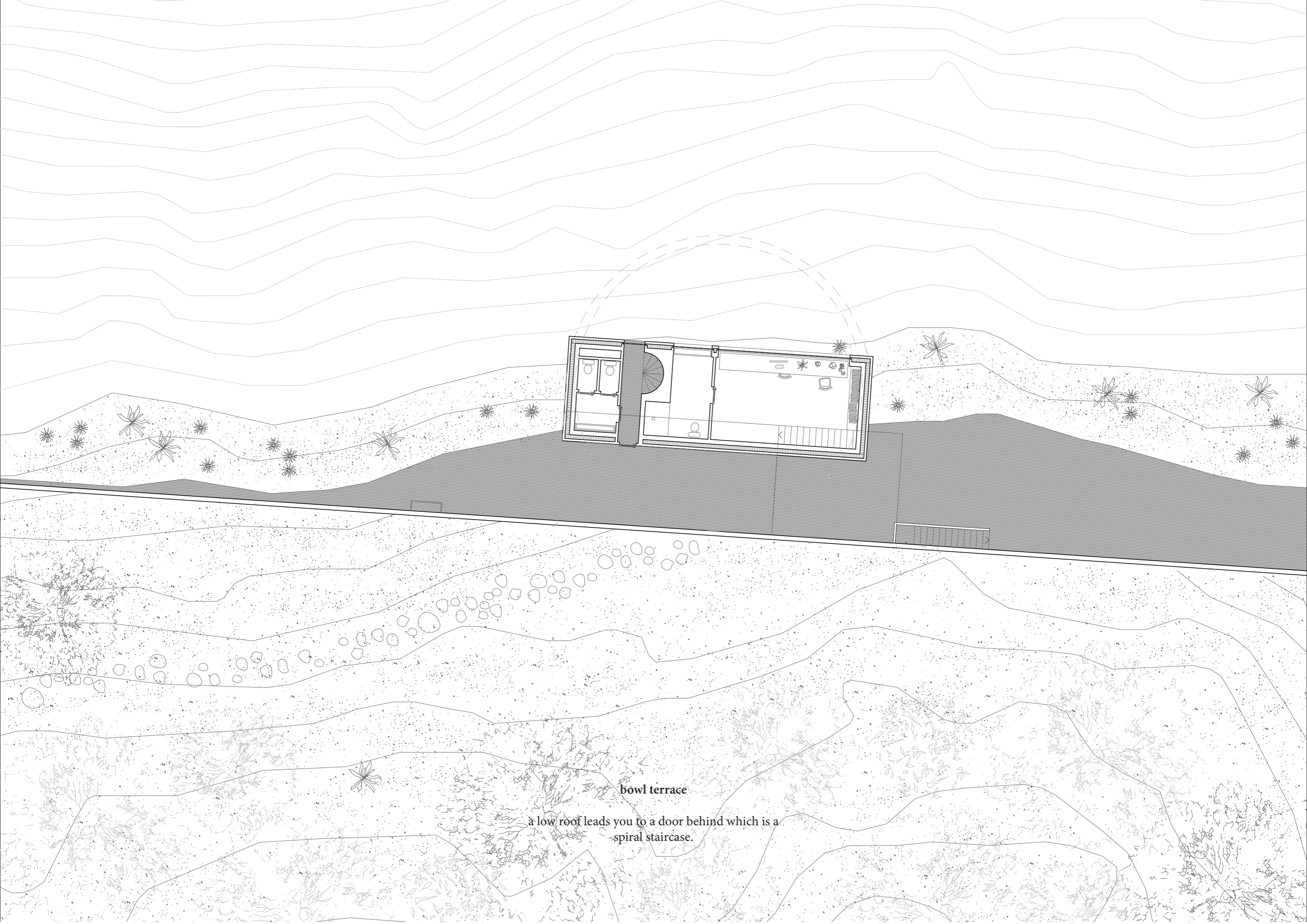
the door hides an elonged entrance space under
ground, consisting of a constructed garden lit up by
a skylight.



entrance

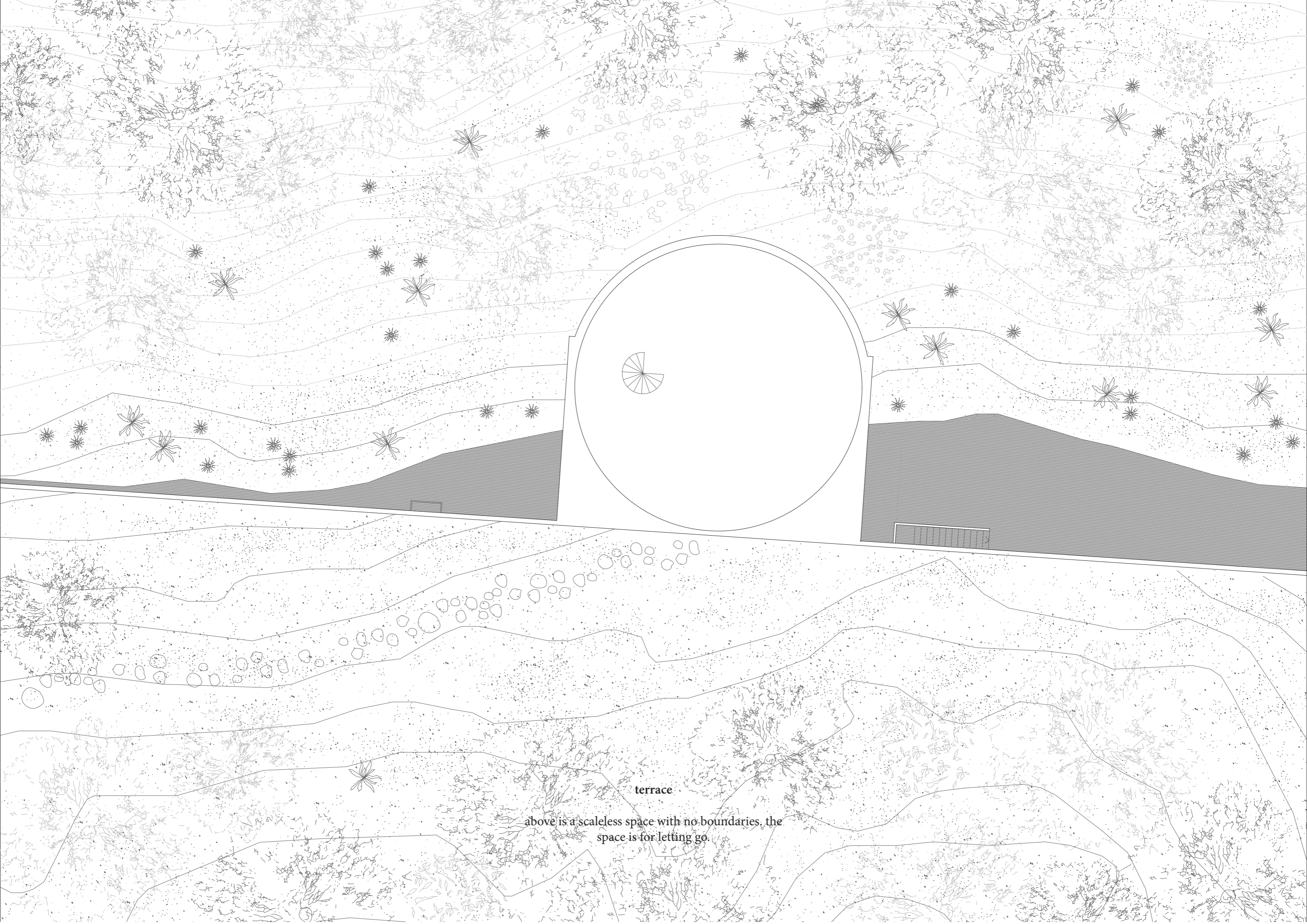
plan 1:150.





bowl terrace

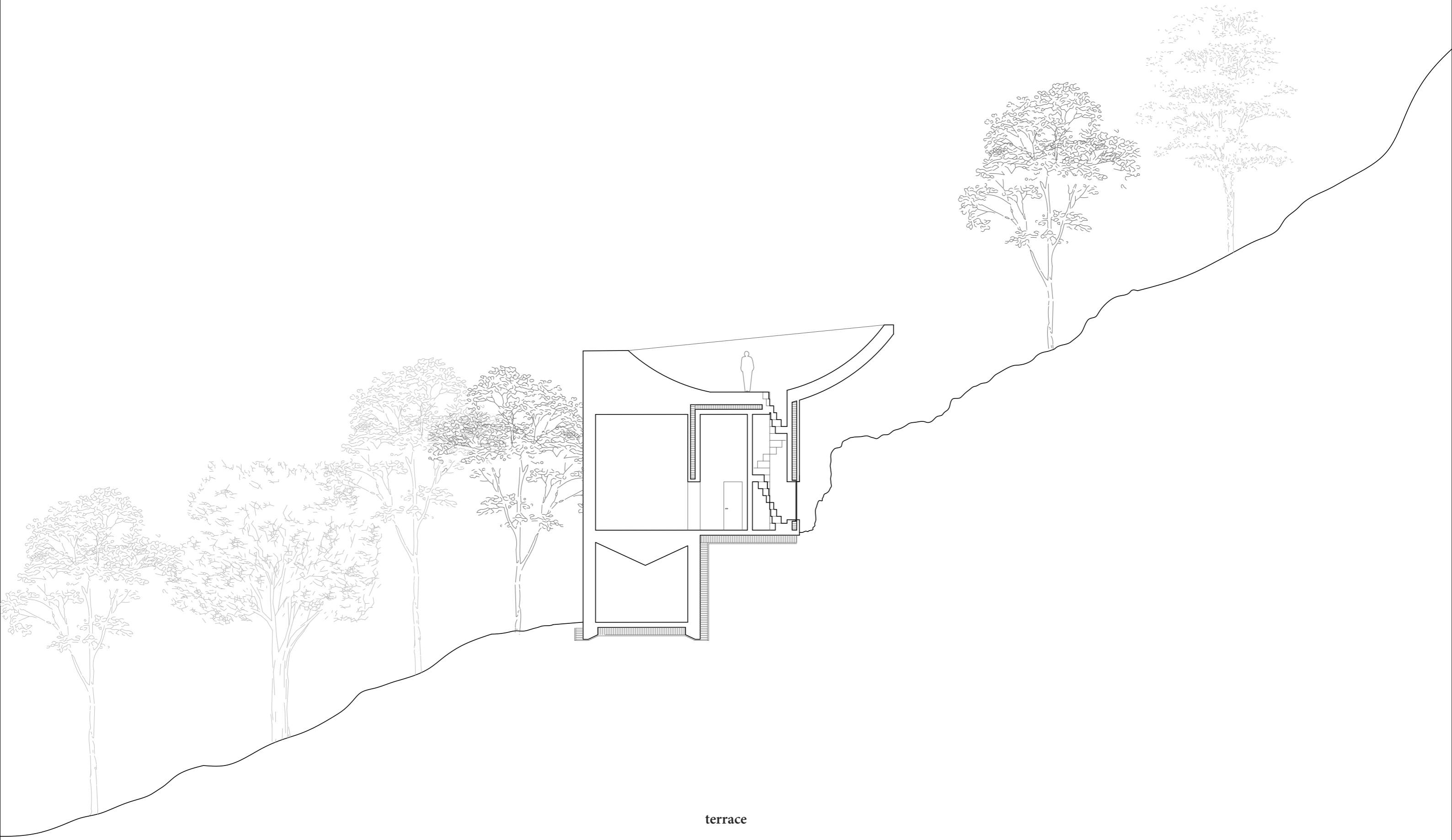
a low roof leads you to a door behind which is a spiral staircase.



terrace

above is a scaleless space with no boundaries, the space is for letting go.

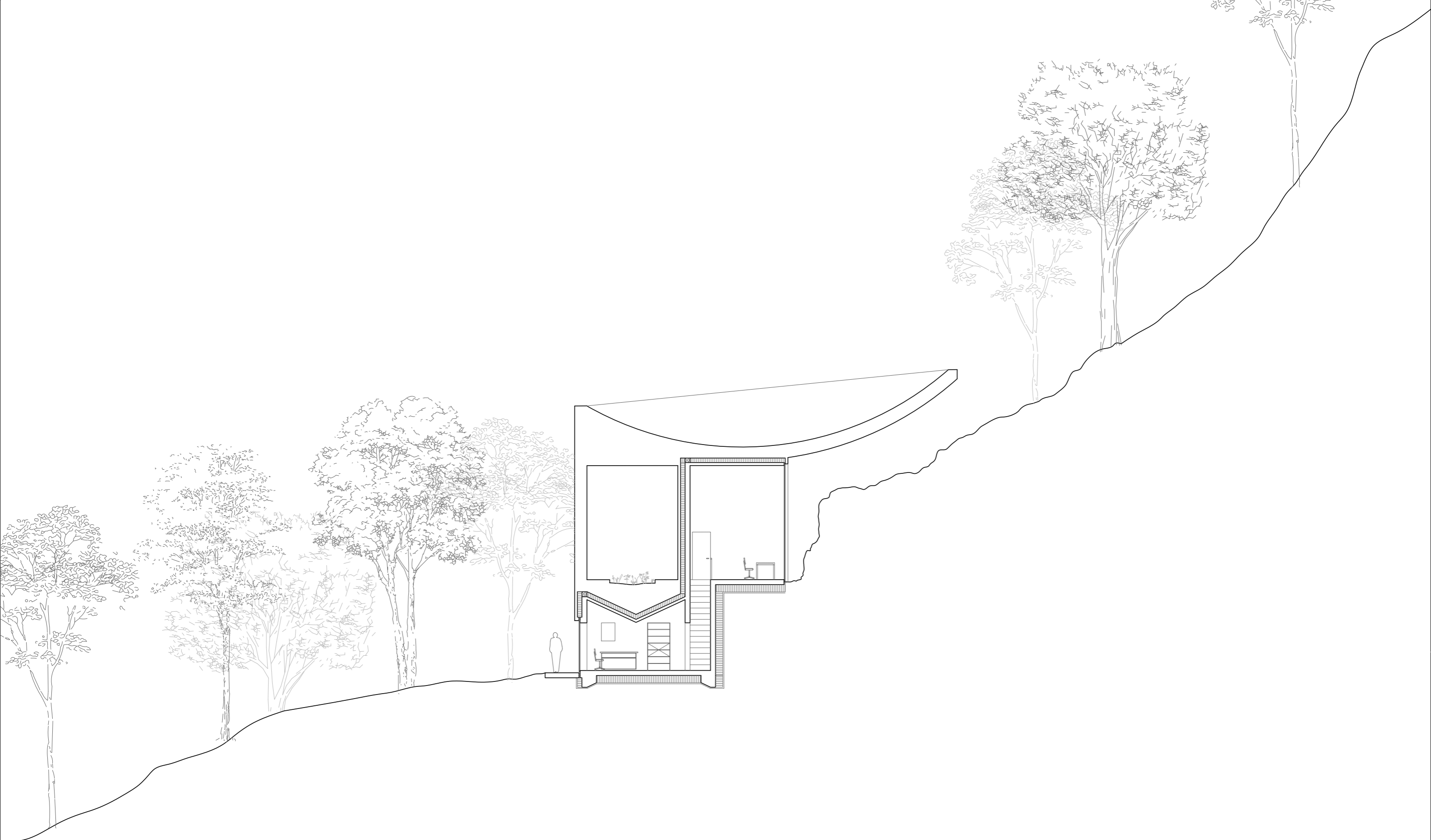




terrace

section 1:150



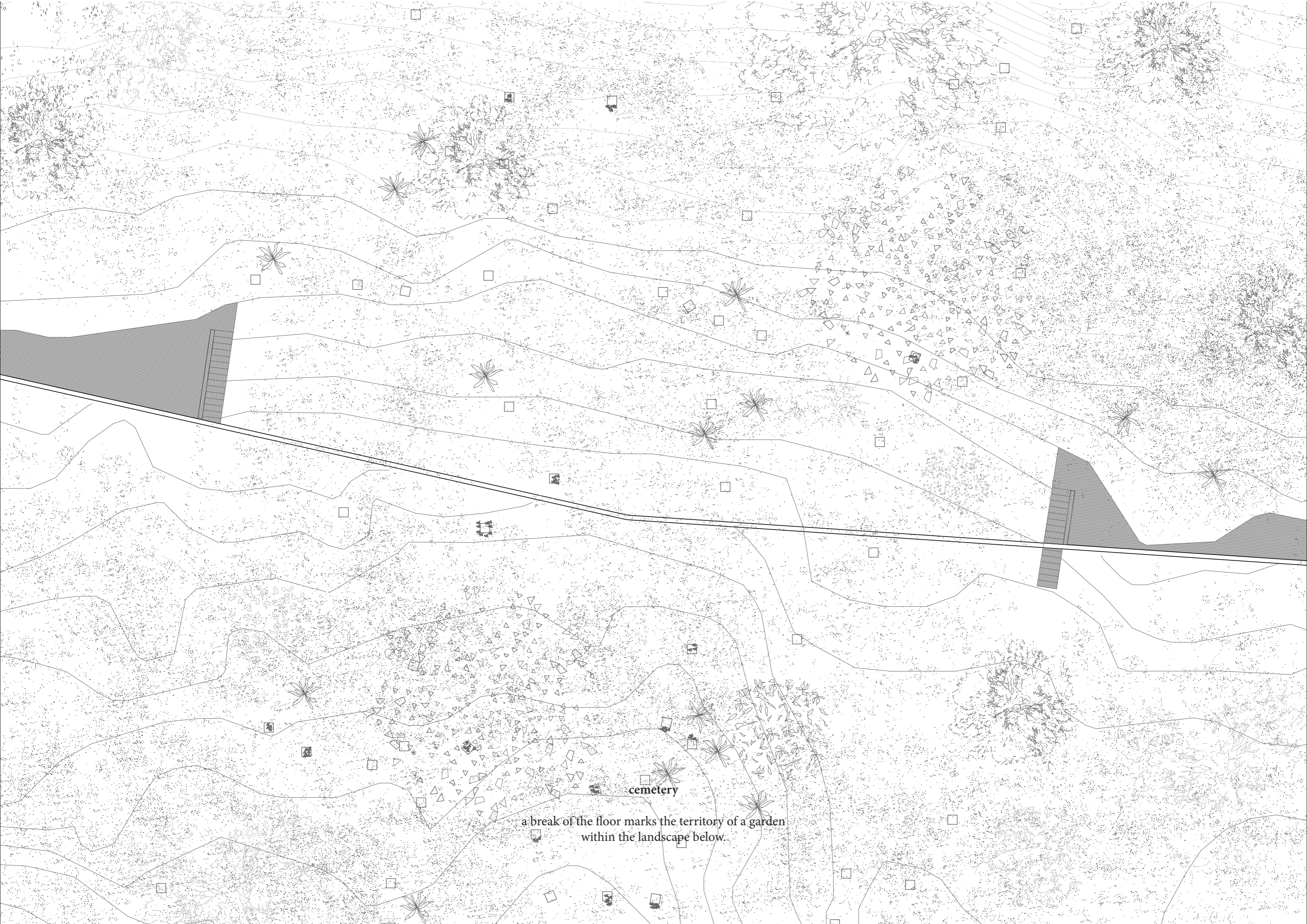


gardeners workshop + office

section 1:150



gardeners workshop



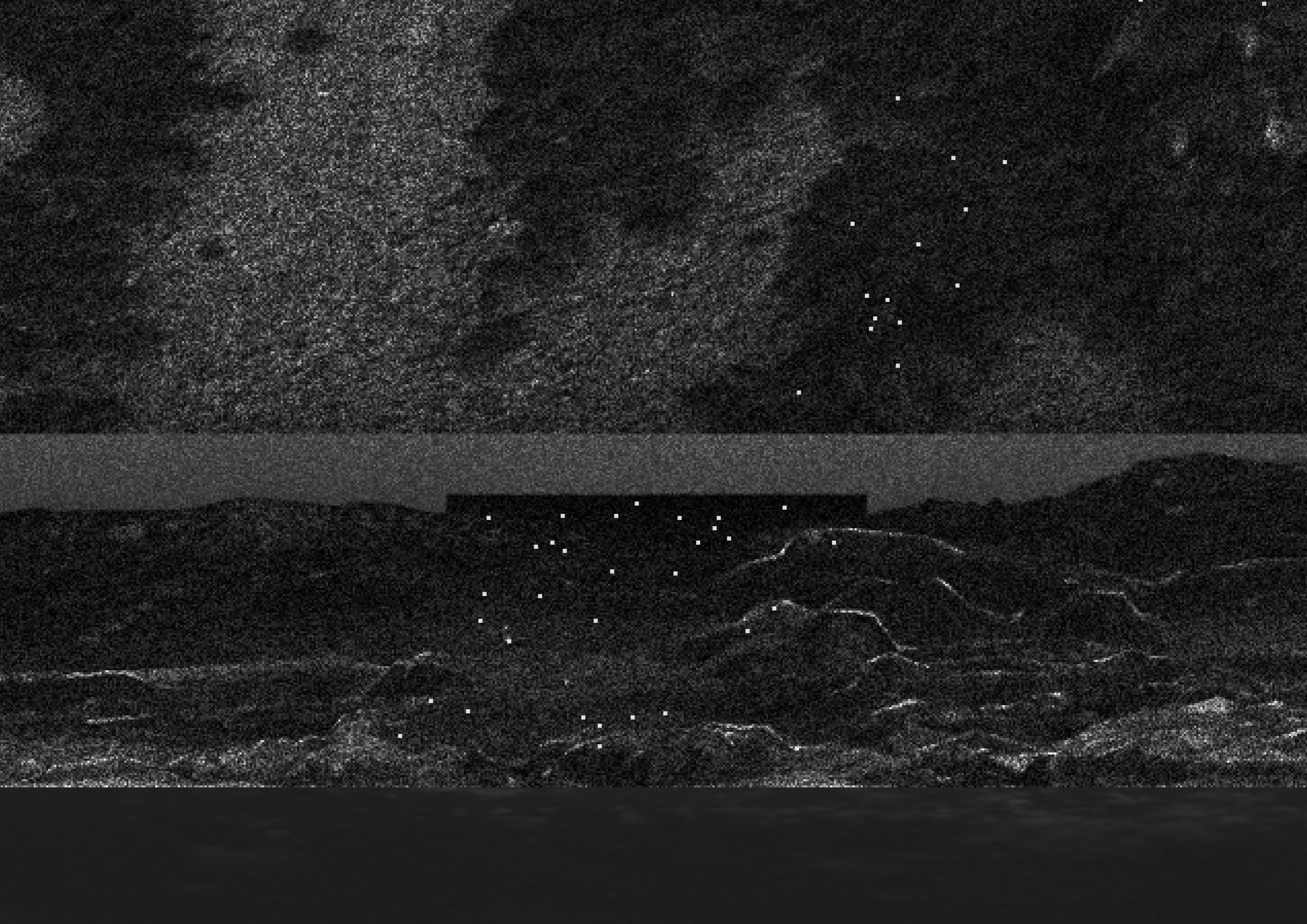
cemetery

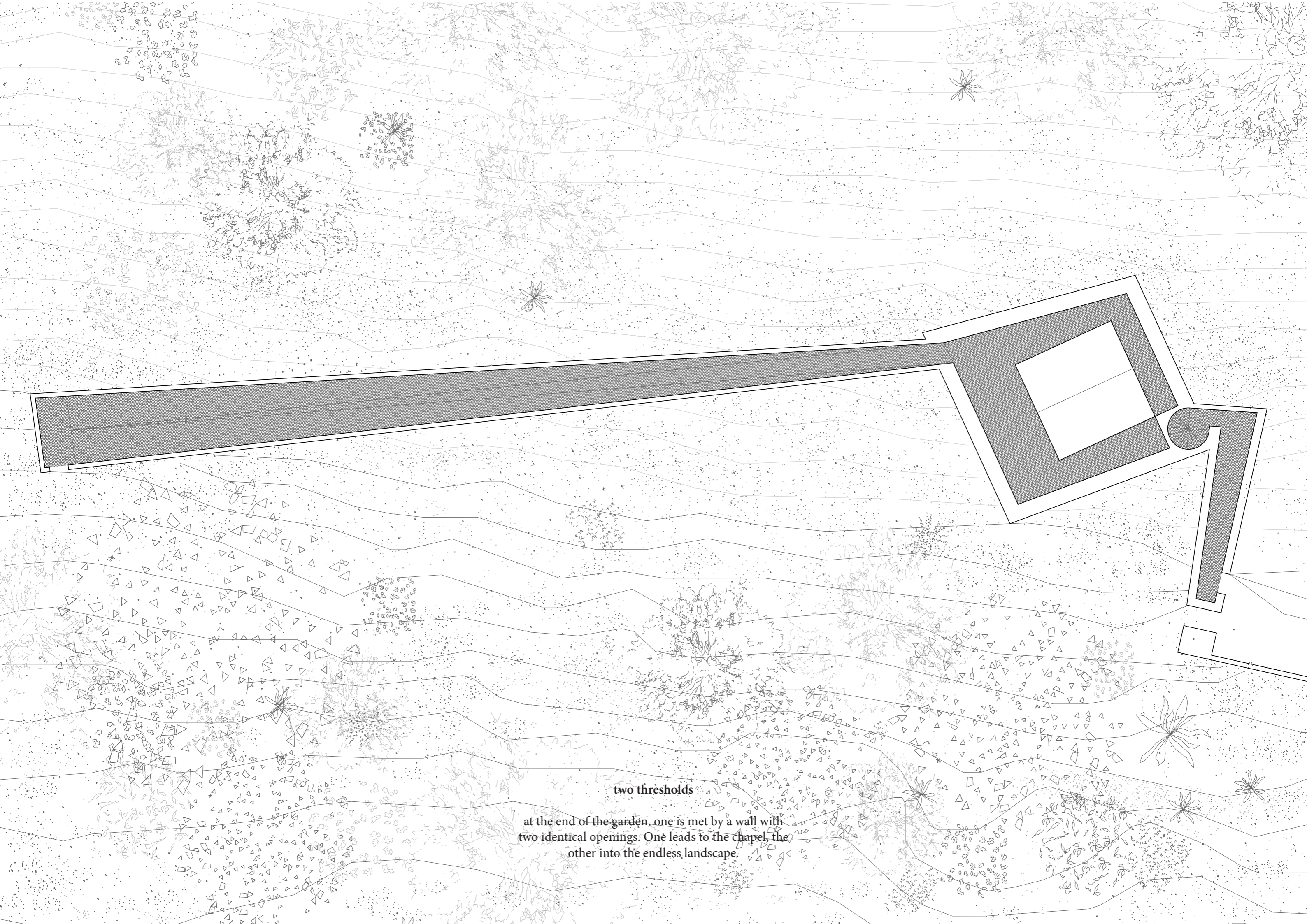
a break of the floor marks the territory of a garden
within the landscape below.



cemetery

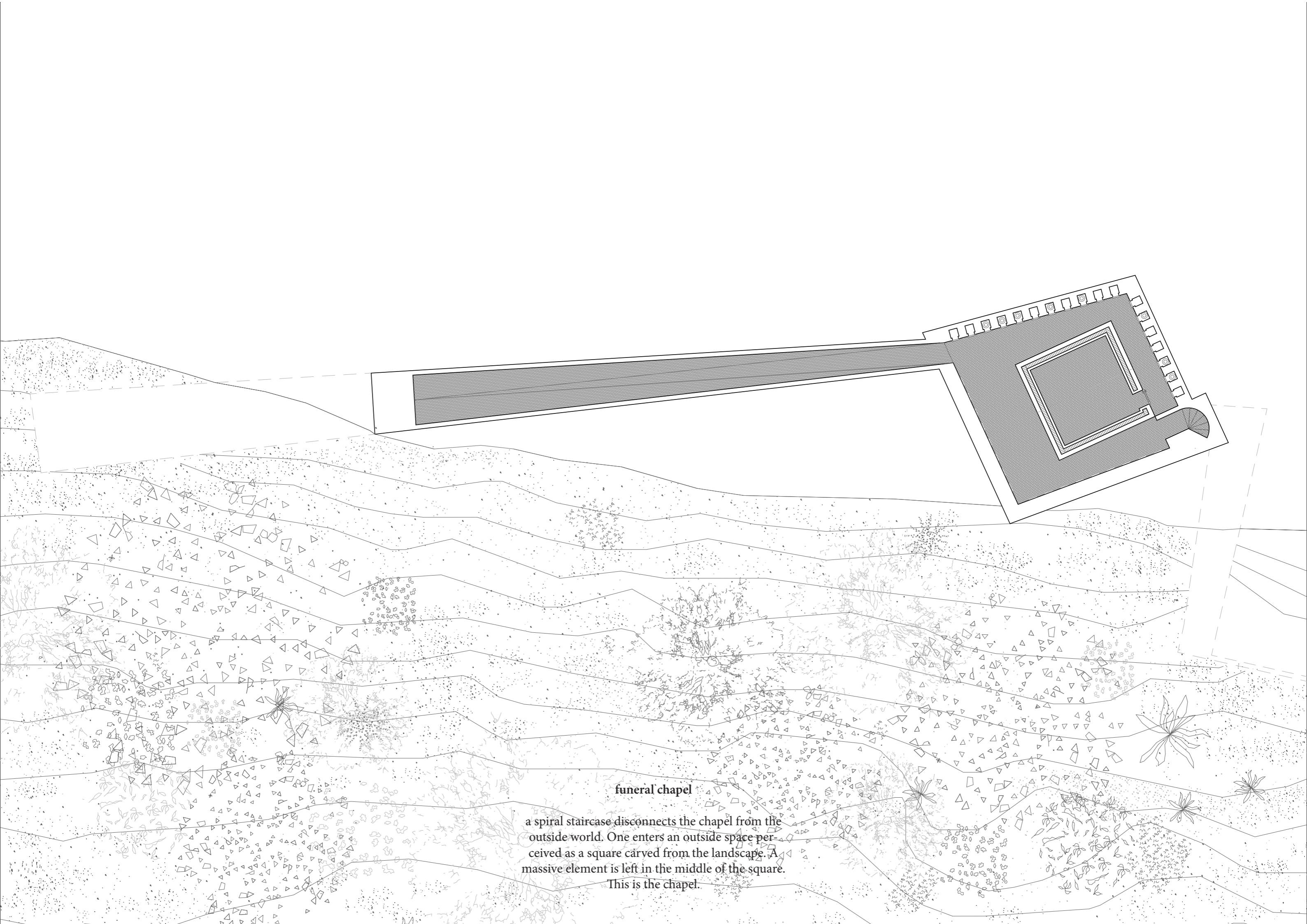
a staircase leads down into the landscape garden
where urns are buried.





two thresholds

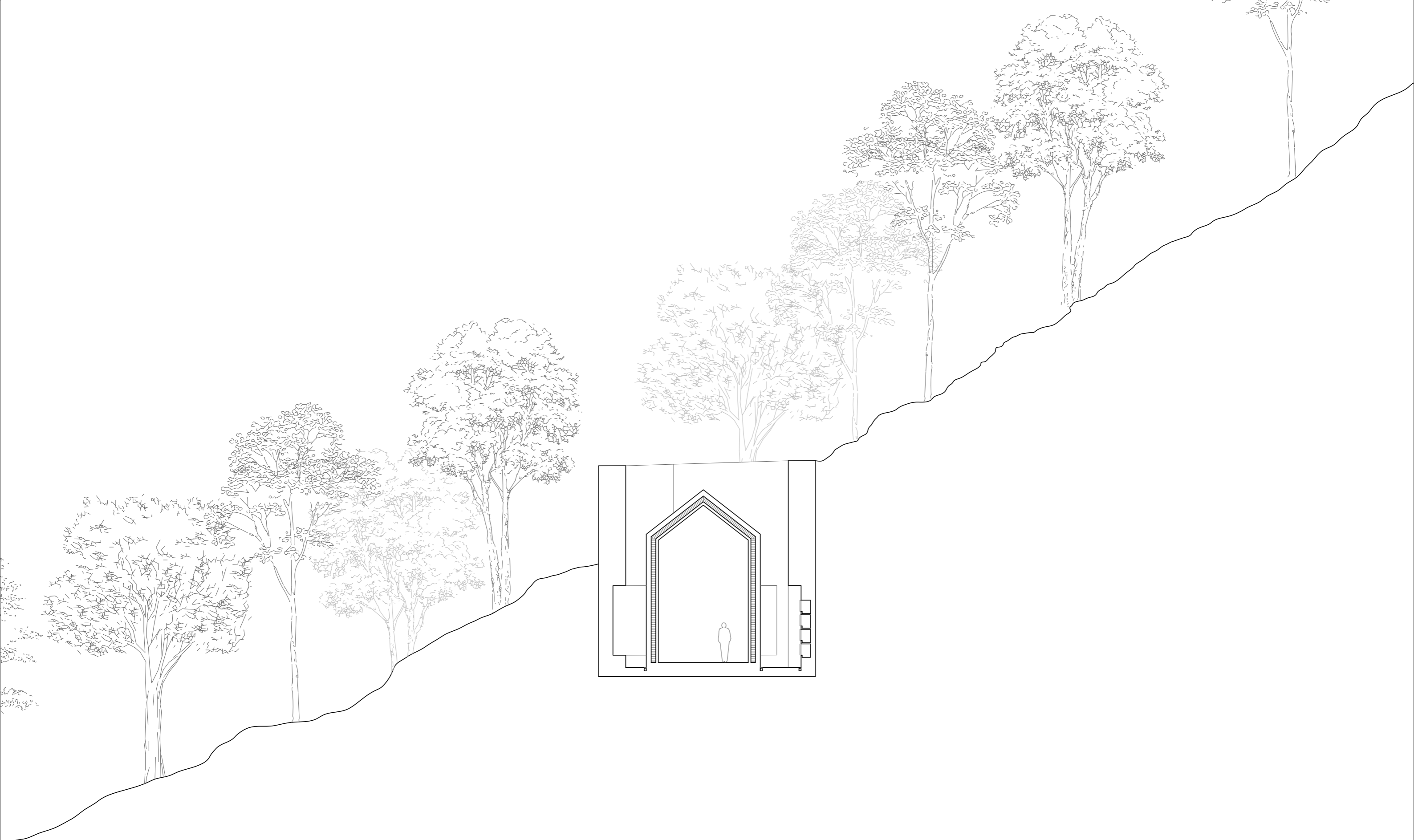
at the end of the garden, one is met by a wall with two identical openings. One leads to the chapel, the other into the endless landscape.



funeral chapel

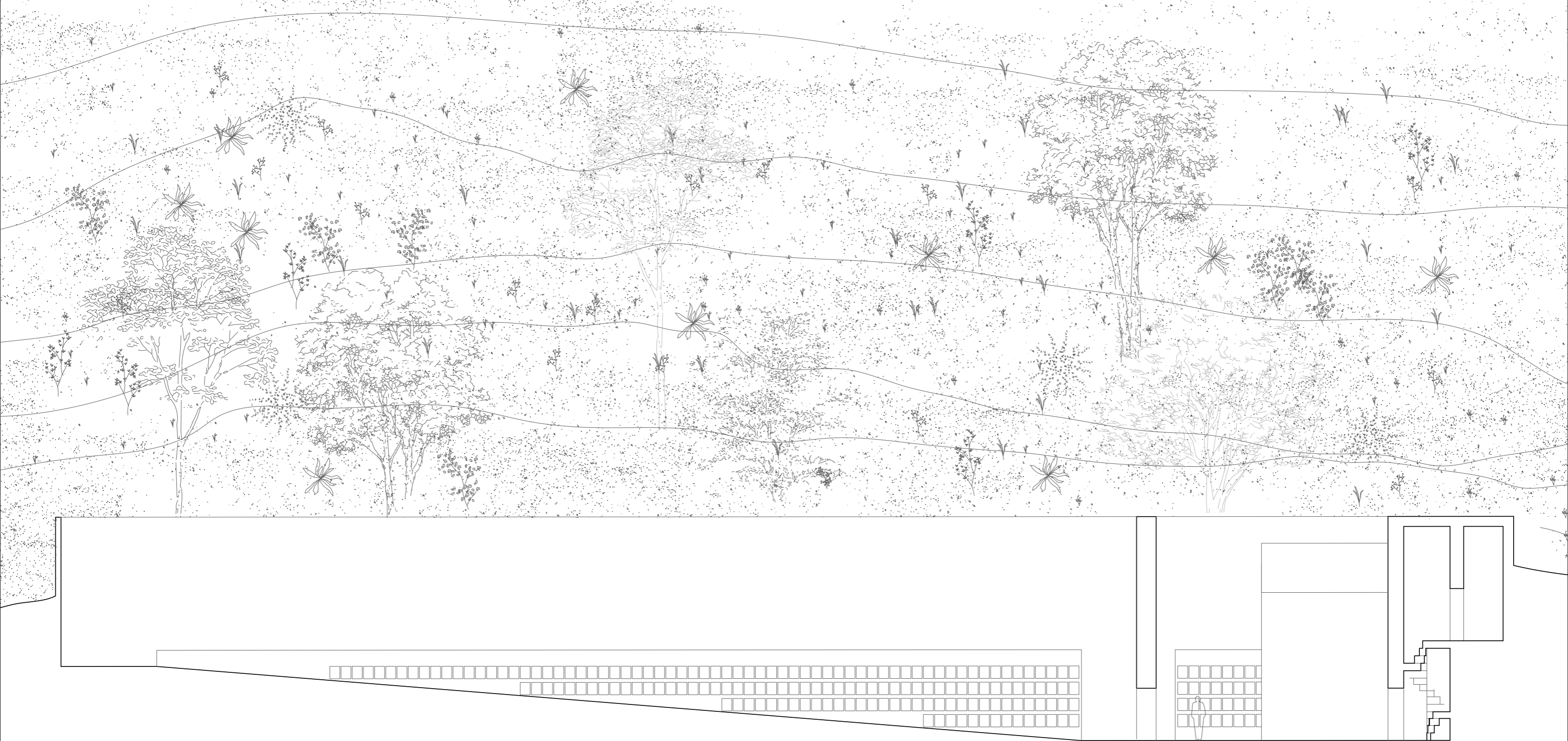
a spiral staircase disconnects the chapel from the outside world. One enters an outside space perceived as a square carved from the landscape. A massive element is left in the middle of the square.

This is the chapel.



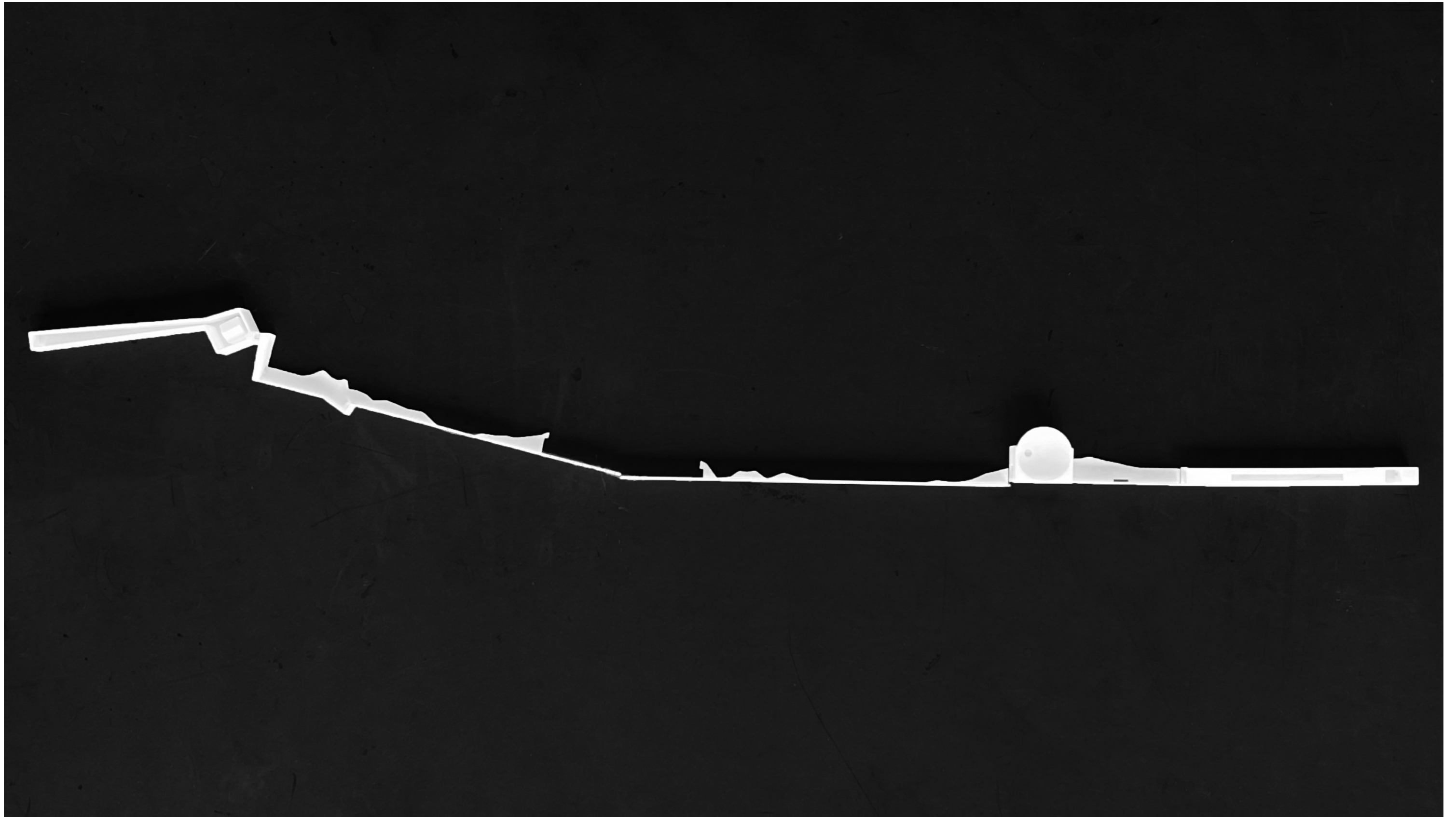
funeral chapel

section 1:150

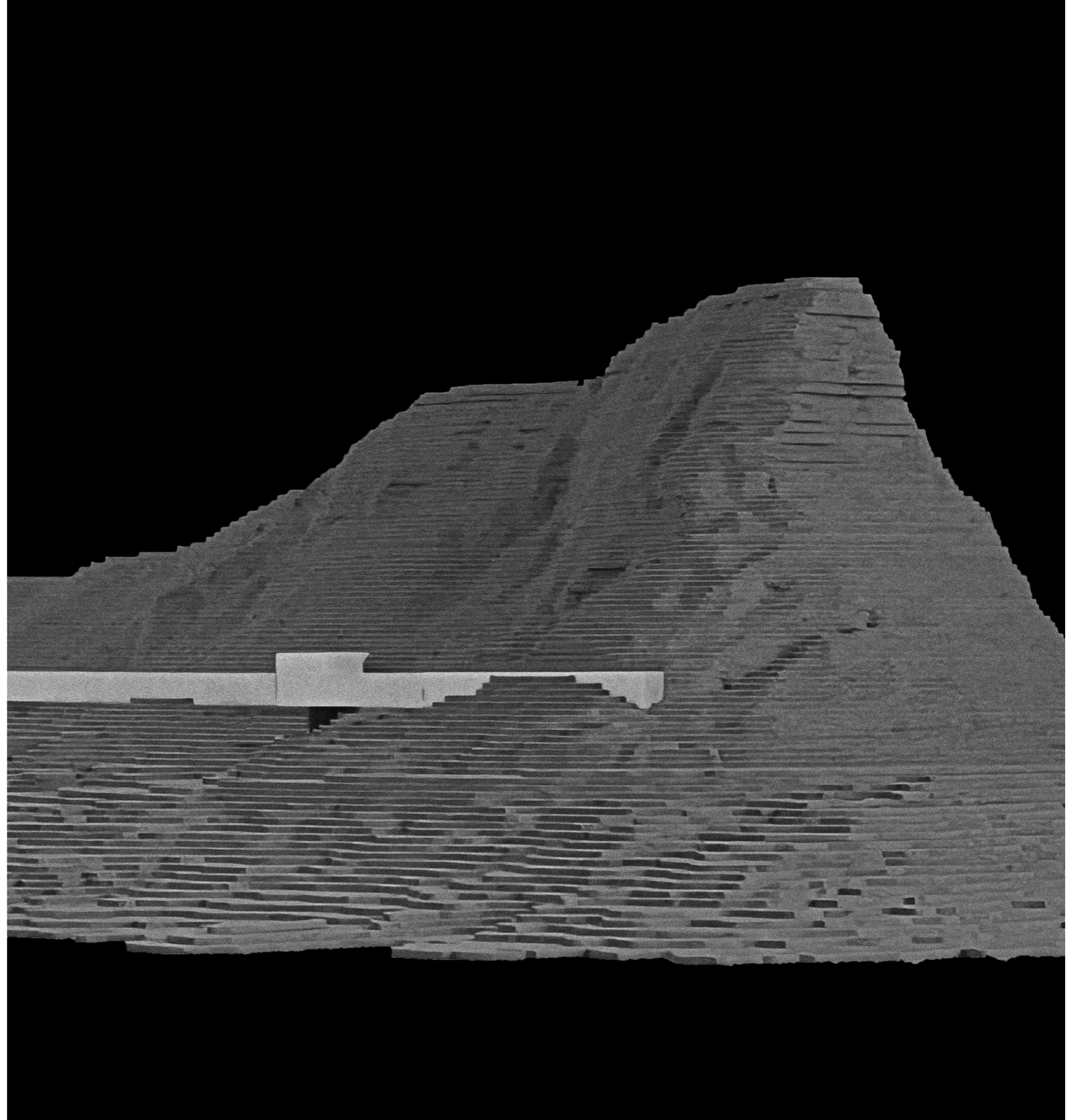


columbarium

the four walls enclosing the irregular space around the chapel forms a columbarium. The columbarium is connected to the landscape by a tunnel.



model 1:400



model 1:400



the reflective surface of the stones mirrors the
continuation of the world - representing a
gathering of *past, presence and future*