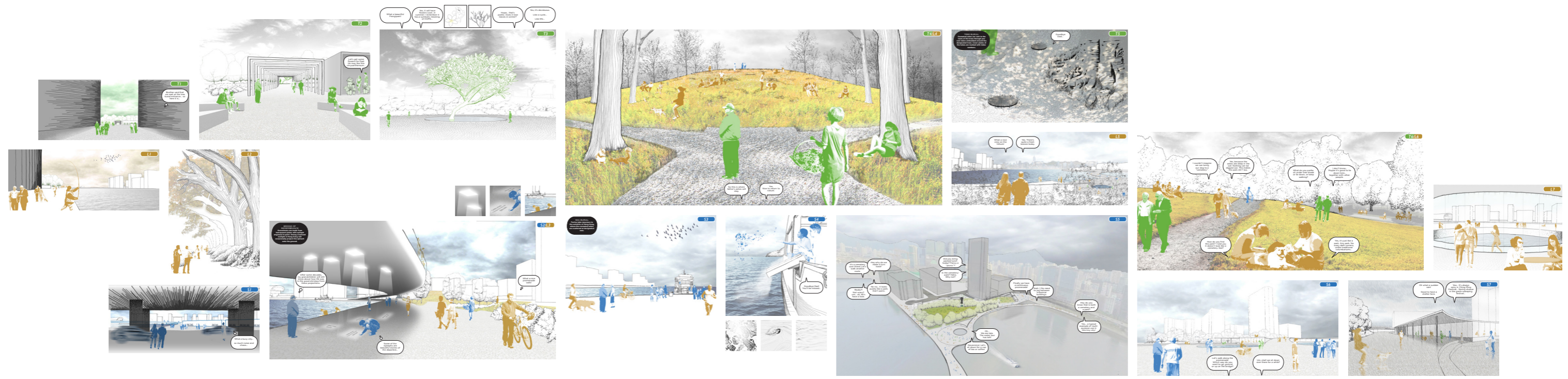
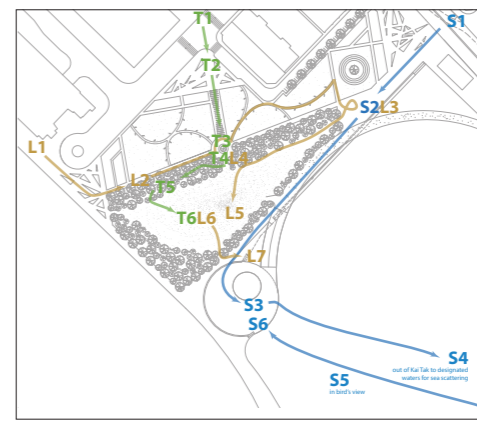


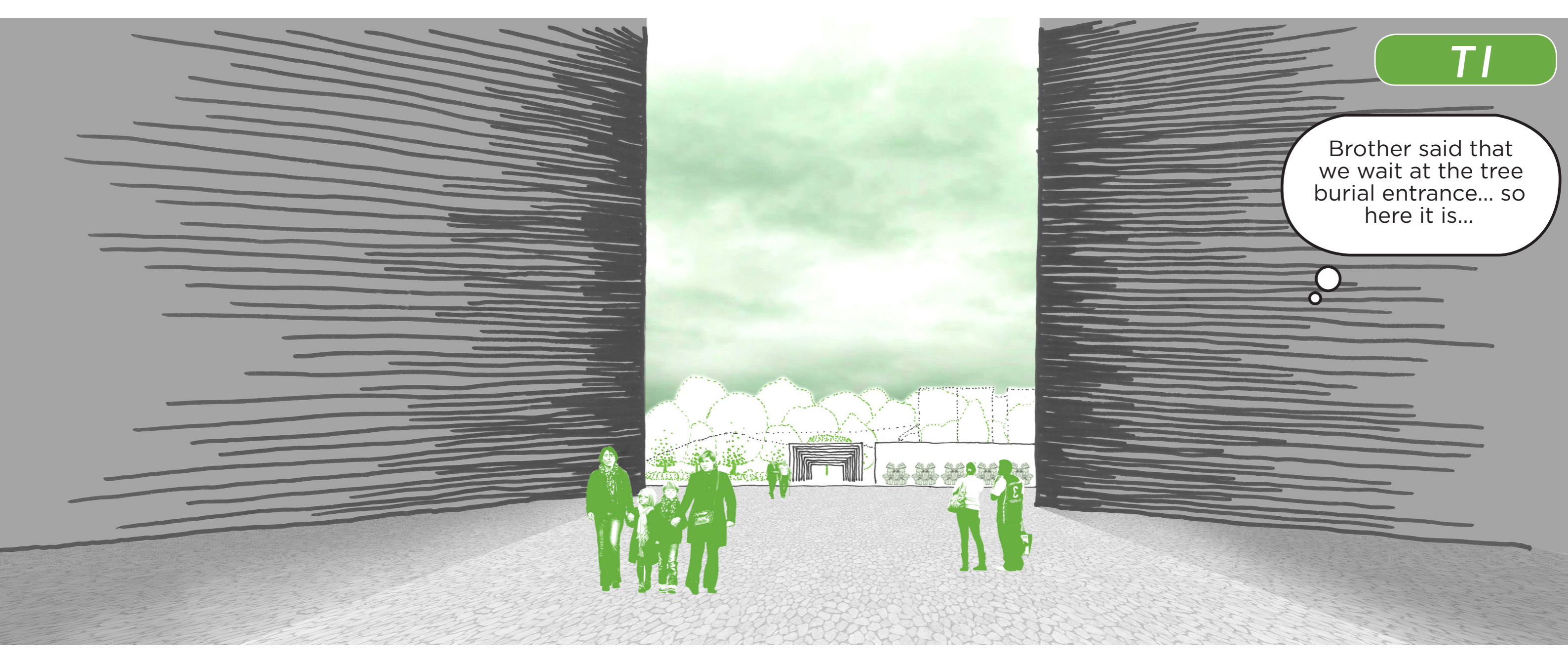
# JOURNEYS OVERVIEW

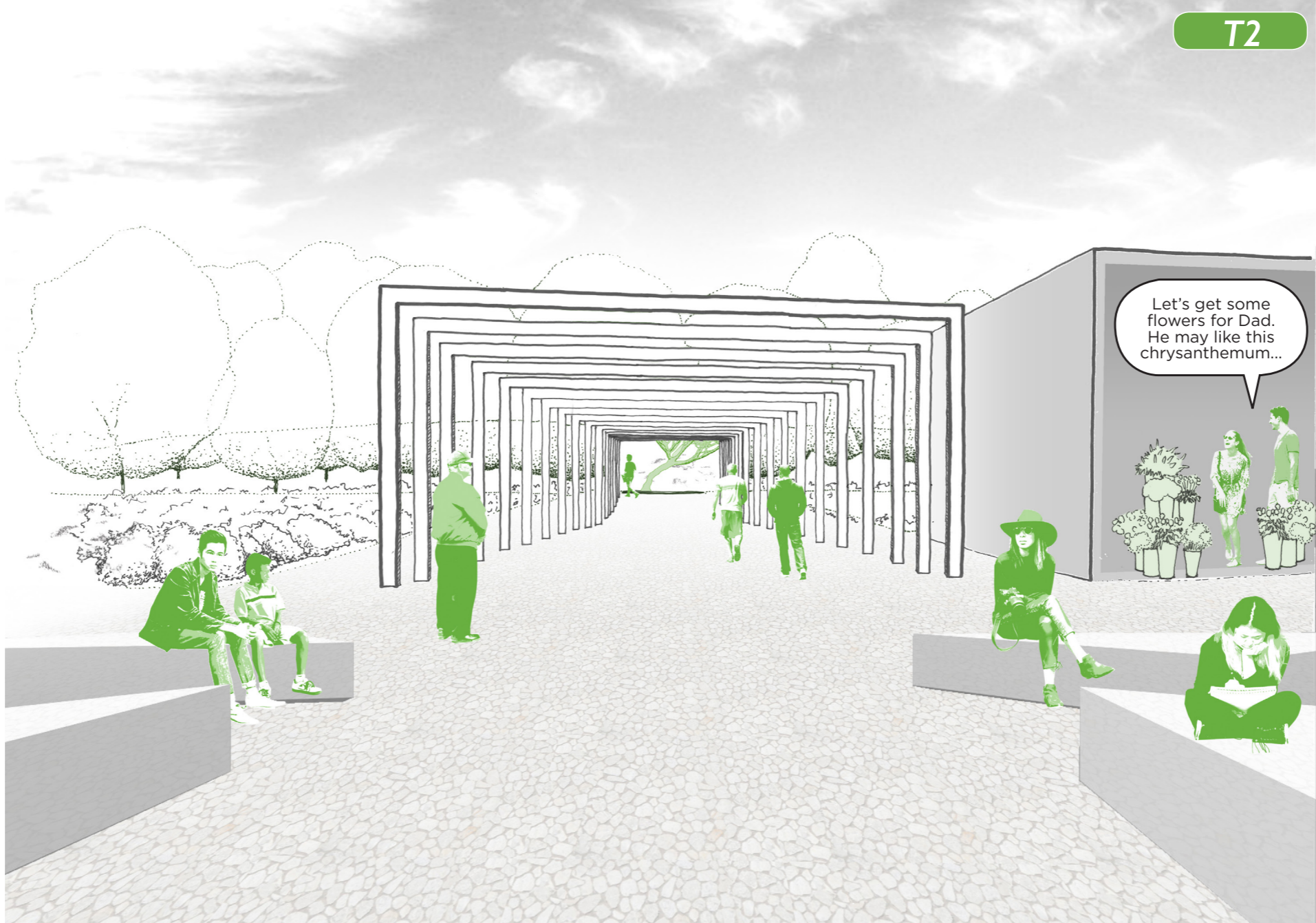
tree burial  
sea burial  
local  
intersections



TI

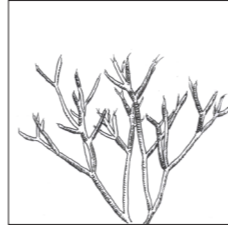
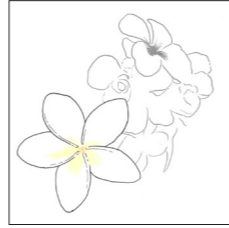
Brother said that we wait at the tree burial entrance... so here it is...





What a beautiful Frangipani!

Yes, it will have flowers soon, in summer. I remember it has a symbolic meaning of HOPE...



Hope... that's poetic. Does it lose leaves in winter?

Yes, it's deciduous. Like a cycle... Like life...

T3



So this is where father's ashes will stay.

Yes. Nice to return to nature.



**TREE BURIAL**  
Cremated ashes are sent to the roots of the trees through pre-cast tubes embedded around the designated trees. Cover plates of the tubes are marked with index numbers.

Goodbye  
Dad...



I couldn't imagine we can bring our dog to a "cemetery".

Yes, because the ashes are deep in the soil. Nothing can be dugged out. This makes the park 24-7 too.

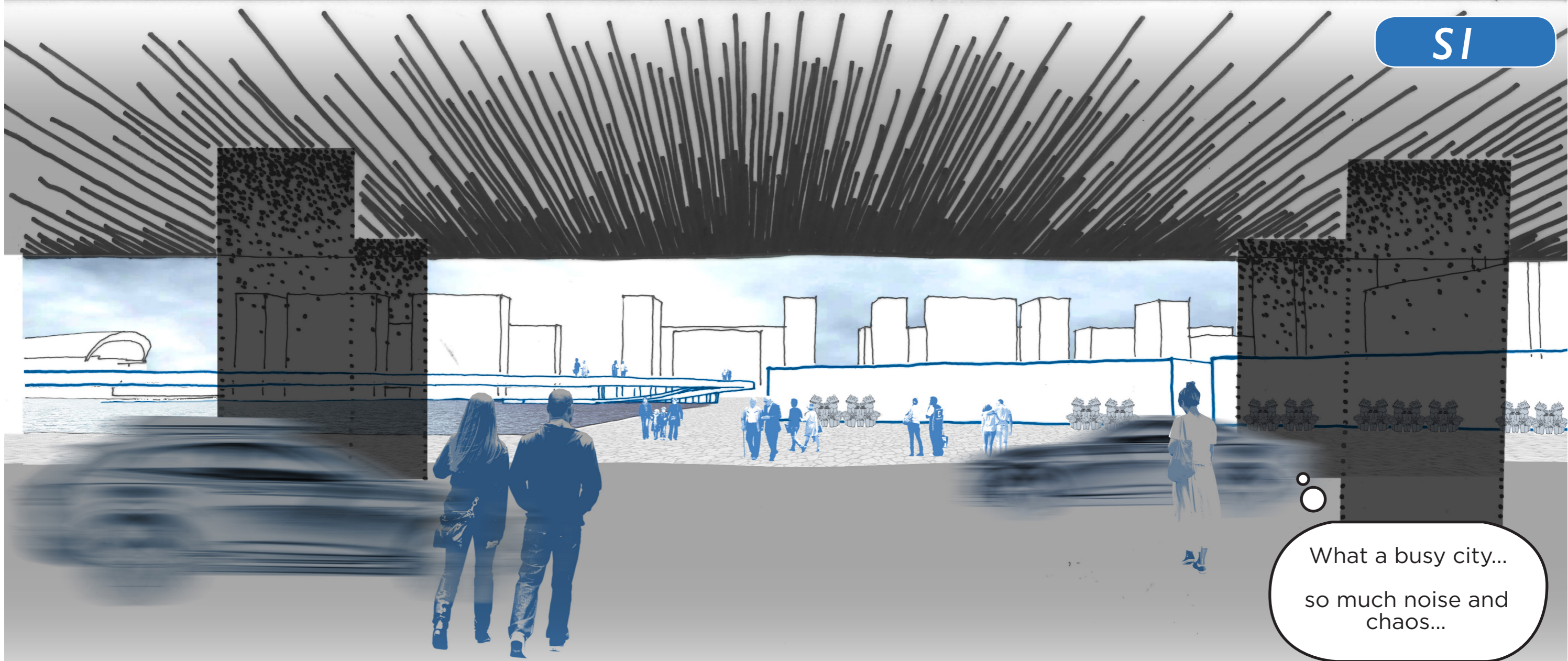
What do you prefer, sit under tree shade or lie down, or keep walking?

I don't know... Maybe it's good to lie down here... together with other people.

How do you find this park? I told you it doesn't look like a cemetery. See?

Yes, it's just like a park. Any park. No scary dark corners, unlike traditional columbariums...





What a busy city...  
so much noise and  
chaos...

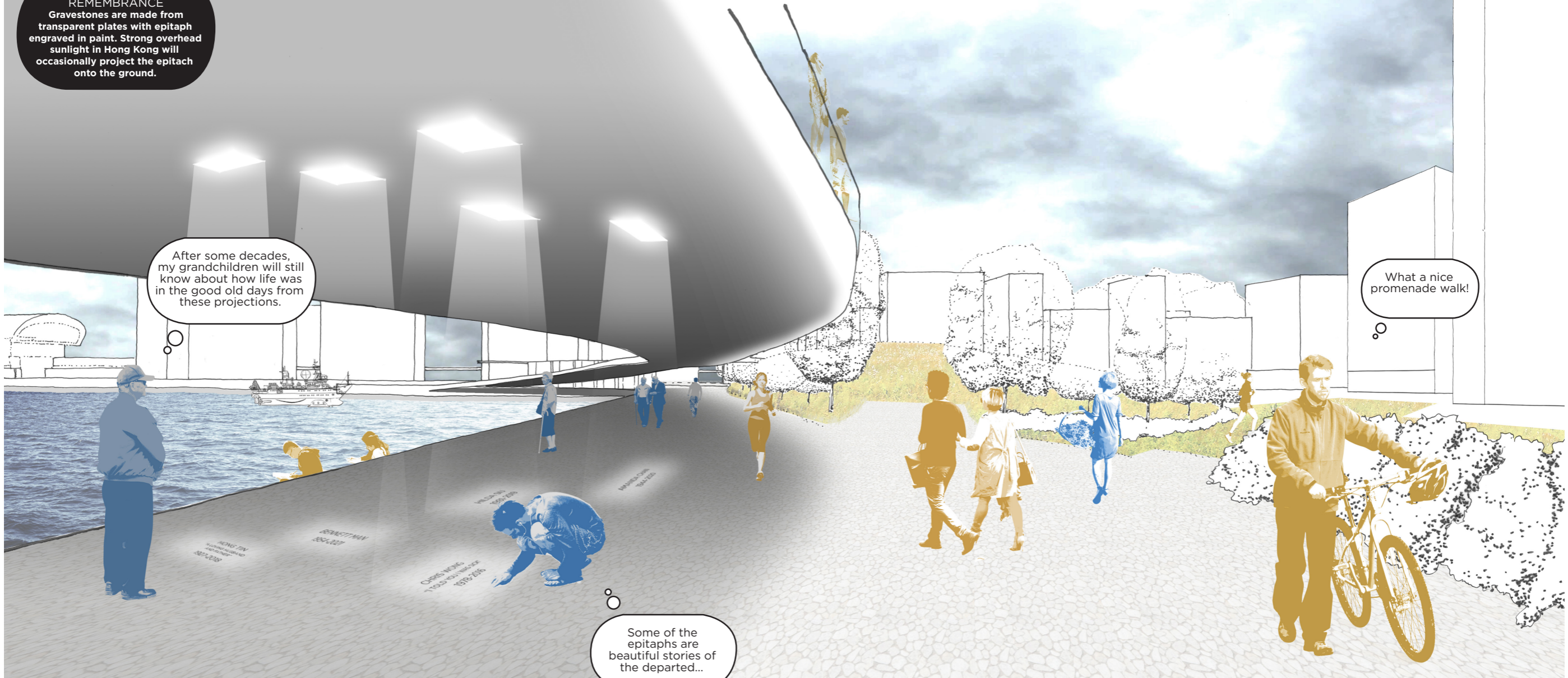


**BRIDGE OF REMEMBRANCE**  
Gravestones are made from transparent plates with epitaph engraved in paint. Strong overhead sunlight in Hong Kong will occasionally project the epitaph onto the ground.

After some decades, my grandchildren will still know about how life was in the good old days from these projections.

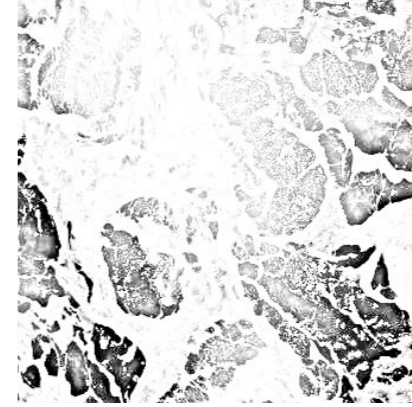
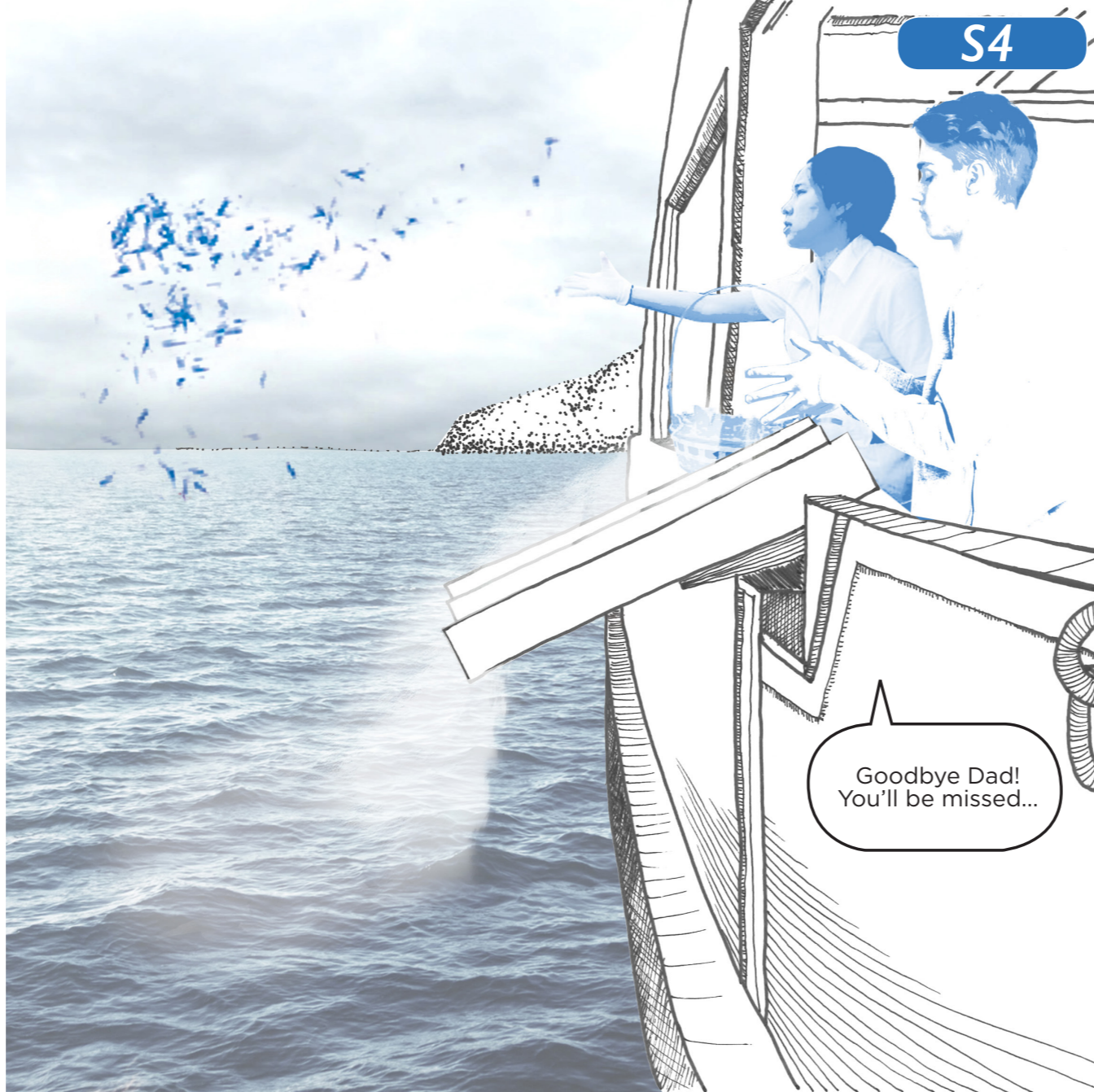
What a nice promenade walk!

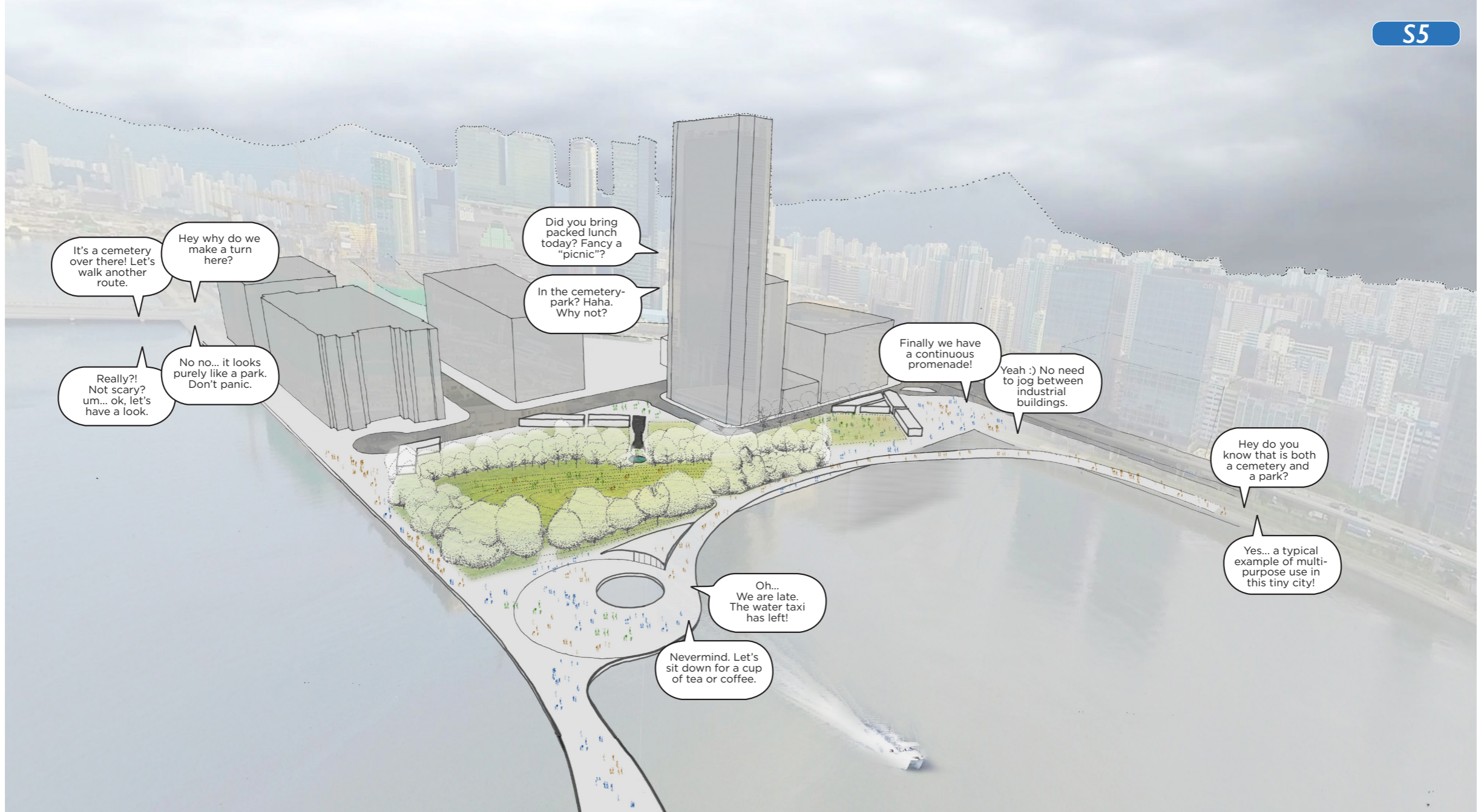
Some of the epitaphs are beautiful stories of the departed...



**SEA BURIAL**  
Ferries take mourners to the outskirts of Hong Kong, where the cremated ashes are scattered at designated seas.







It's a cemetery over there! Let's walk another route.

Hey why do we make a turn here?

Did you bring packed lunch today? Fancy a "picnic"?

In the cemetery-park? Haha. Why not?

Really?! Not scary? um... ok, let's have a look.

No no... it looks purely like a park. Don't panic.

Finally we have a continuous promenade!

Yeah :) No need to jog between industrial buildings.

Hey do you know that is both a cemetery and a park?

Oh... We are late. The water taxi has left!

Nevermind. Let's sit down for a cup of tea or coffee.

Yes... a typical example of multi-purpose use in this tiny city!



Let's walk along the promenade.  
Which way do you want to go, ground or up on the bridge?

Um, shall we sit down over there for a while?

Oh what a sudden rain!

Good to have a shelter here.

Yea... It's always rainy in Ching Ming Festival... Spring shower in the grave sweeping festival...







L2



What a nice  
view on the  
hillock!

Yes. There's  
quite a fresh  
breeze today.



